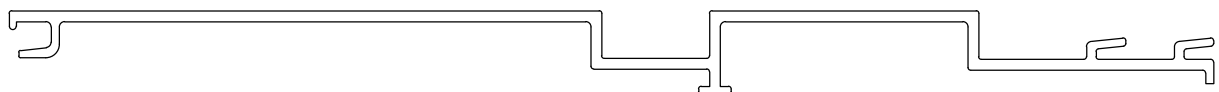


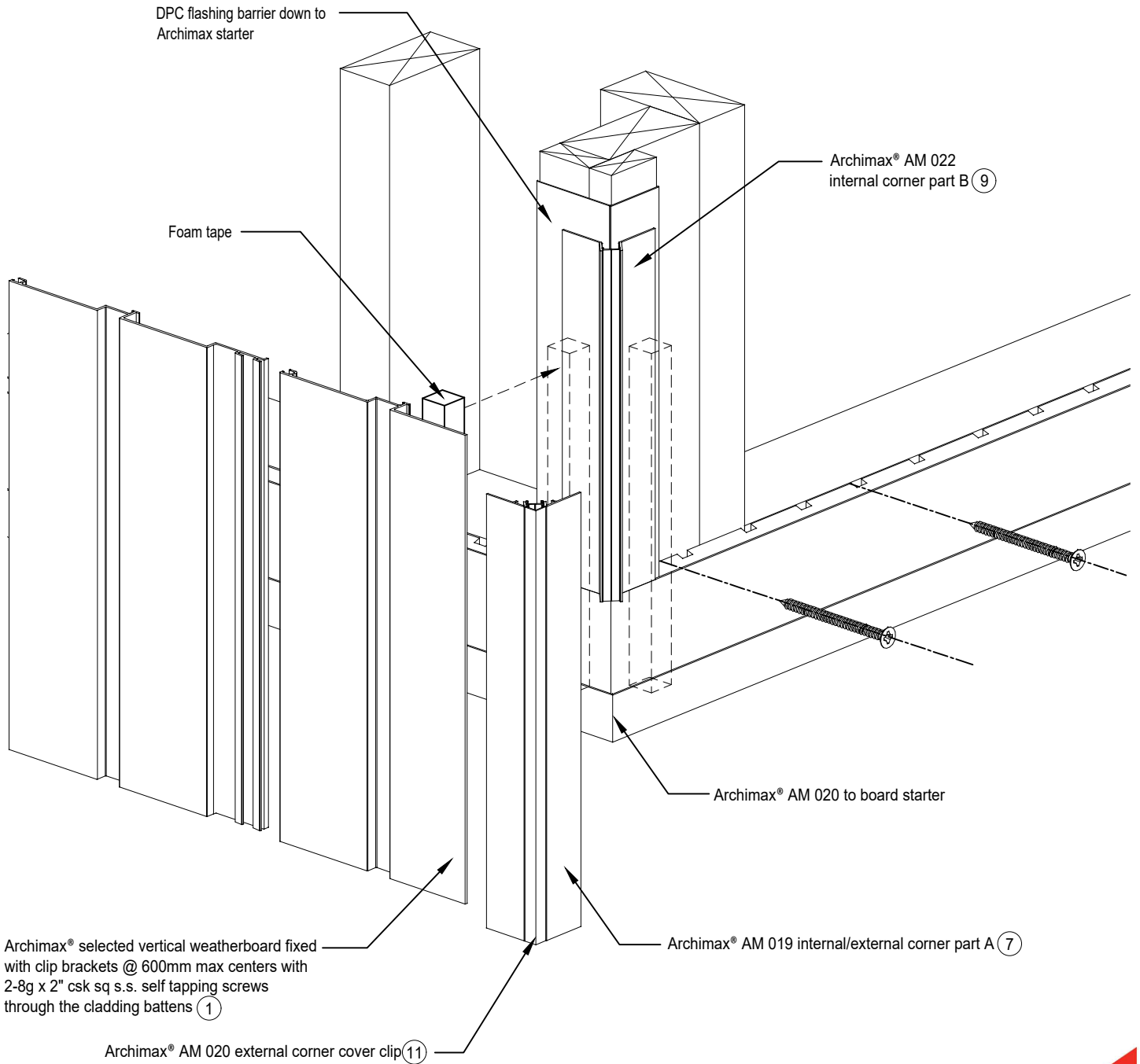


Archimax® Aluminium Cladding System
AM100-1 Vertical Profile - Installation Details

| Drawing No. | Rev | Description |
|-------------|-----|--|
| AM-WH-V1 | D | Archimax® Window Head Detail |
| AM-WS-V2.1 | D | Archimax® Window Sill Detail |
| AM-WS-V2.2 | D | Archimax® Window Sill Detail |
| AM-WJ-V3 | D | Archimax® Window Jamb Detail |
| AM-EXT-V4 | D | Archimax® External Corner Detail |
| AM-INT-V5 | D | Archimax® Internal Corner Detail |
| AM-CBS-V6.1 | D | Archimax® Concrete Floor Board Starter Detail –Timber |
| AM-CBS-V6.2 | D | Archimax® Concrete Floor Board Starter Detail –Fire Wall |
| AM-HJ-V7 | D | Archimax® Horizontal Joint Detail |
| AM-DJ-V8 | D | Archimax® Deck Junction Detail |
| AM-PP-V9A | D | Archimax® Pipe Penetration Plan View Detail |
| AM-PP-V9B | D | Archimax® Pipe Penetration Section View Detail |
| AM-SO-V10 | D | Archimax® Soffit Detail |
| AM-SO-V11.1 | D | Archimax® Fascia, Soffit & Wall Detail |
| AM-SO-V11.2 | D | Archimax® Fascia, Soffit & Wall Detail (90° Soffit/Wall) |
| AM-SO-V11.3 | D | Archimax Fascia, Board Soffit & Wall Detail |
| AM-SO-V12 | D | Archimax® Non-Soffit Detail |
| AM-BJ-V13 | D | Archimax® Internal Corner Junction Detail |
| AM-PAR-V14 | D | Archimax® Parapet with Cavity Detail |
| AM-RW-V15 | D | Archimax® Lower Roof Wall Junction Detail |
| AM-MB-V16 | D | Archimax® Meter Box Head Detail |
| AM-MB-V17 | D | Archimax® Meter Box Sill Detail |
| AM-MB-V18 | D | Archimax® Meter Box Jamb Detail |

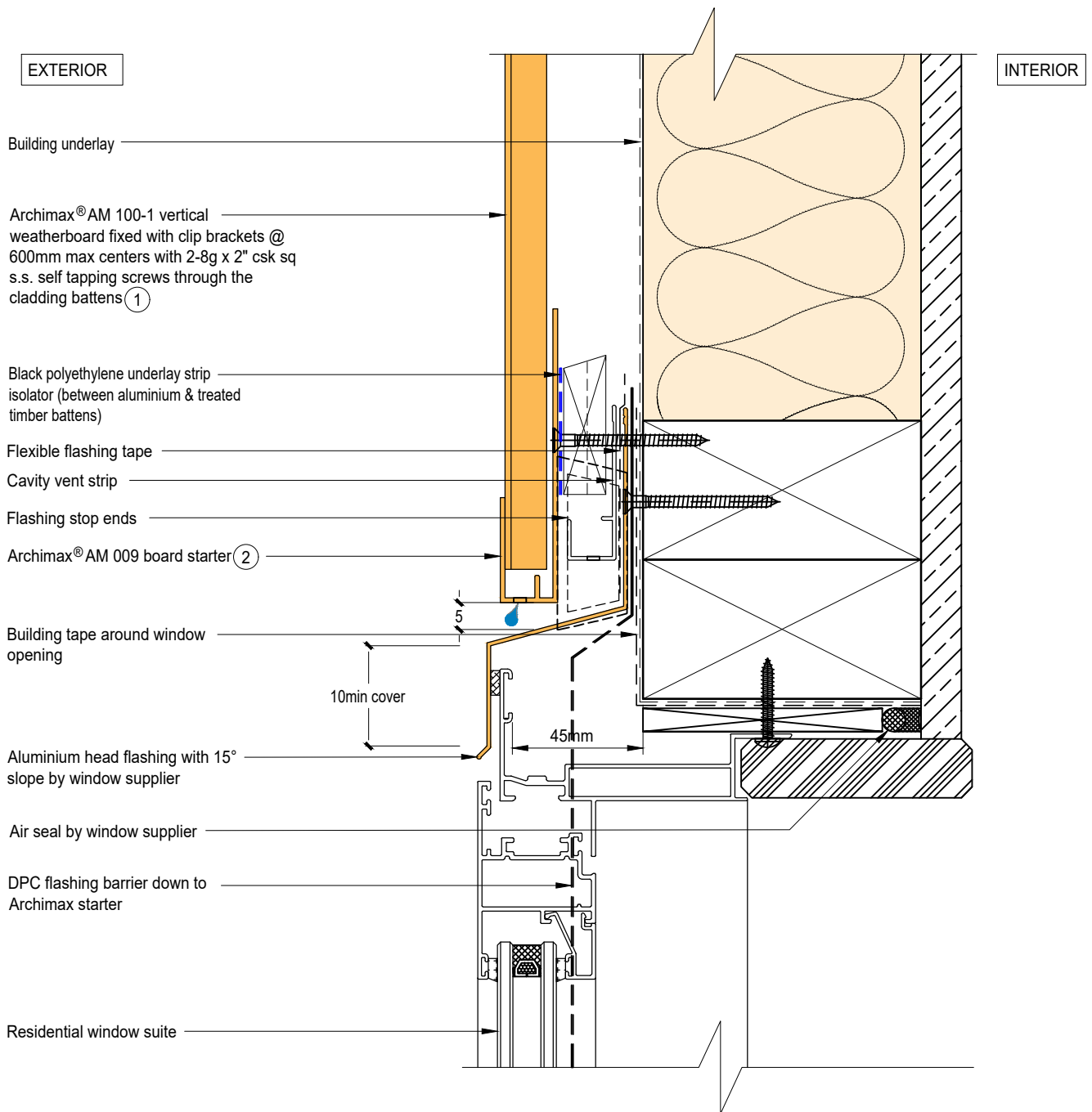


AM100-1
Coverage: 200mm



ARCHIMAX
ALUMINIUM CLADDING SYSTEM
Creating more durable building envelopes
www.archimax.co.nz

| | | | |
|--|---|------------------|---------------|
| System ARCHIMAX® | Detail ARCHIMAX® VERTICAL ON CAVITY TYPICAL CORNER ASSEMBLY | Drawing No. - | Rev. - |
| This drawing is the copyright of Archimax Limited. Modification of details for job specification requirements must be approved by Archimax Ltd. The building designer is ultimately responsible to ensure all building work is designed and constructed according to building code requirements, best code of practice industry guidelines. All components must be supplied by Archimax. Archimax reserves the right to alter or upgrade details at any time without prior notice. | | Scale NTS | Date NOV23 |

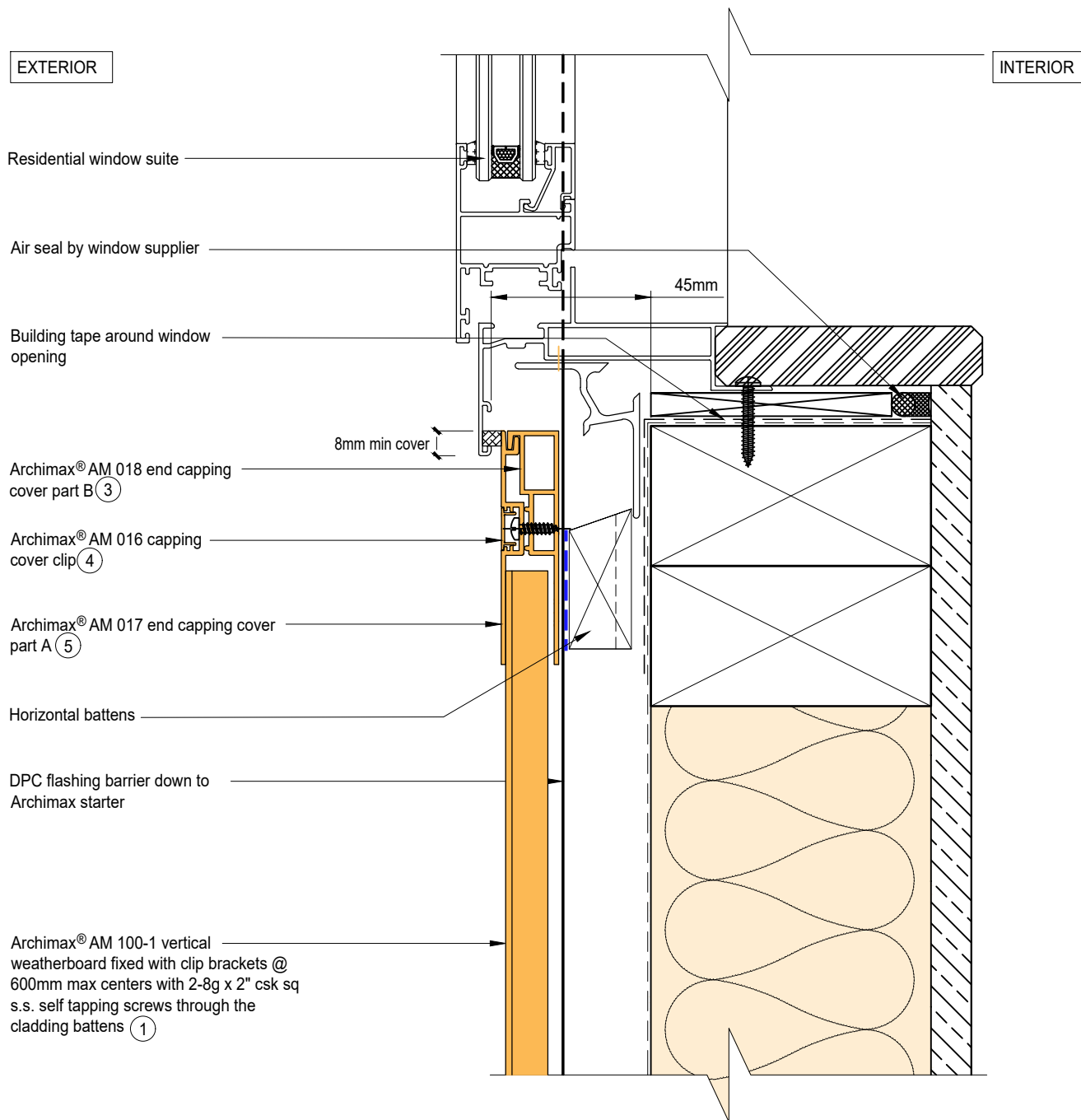


NOTE:

1. Stop ends to be installed at flashing ends.
2. Minimum Clearance between the AIR BARRIER and WINDOW JOINERY to be 45mm. Window Joinery should not be permanently fixed until cladding installed.




| | | | | | | |
|--|---|--|--|-------|------|-----|
|  <p>ARCHIMAX ALUMINIUM CLADDING SYSTEM <i>Creating more durable building envelopes</i> www.archimax.co.nz</p> | System AM100-1-VERTICAL WEATHERBOARD | Detail ARCHIMAX® WINDOW HEAD DETAIL | Drawing No. Rev. AM-WH-V1 D | | | |
| | <p>This drawing is the copyright of Archimax Limited. Modification of details for job specification requirements must be approved by Archimax Ltd. The building designer is ultimately responsible to ensure all building work is designed and constructed according to building code requirements, best code of practice industry guidelines. All components must be supplied by Archimax. Archimax reserves the right to alter or upgrade details at any time without prior notice.</p> | | <table border="1"> <tr> <td>Scale</td> <td>Date</td> </tr> <tr> <td>1:2</td> <td>NOV23</td> </tr> </table> | Scale | Date | 1:2 |
| Scale | Date | | | | | |
| 1:2 | NOV23 | | | | | |

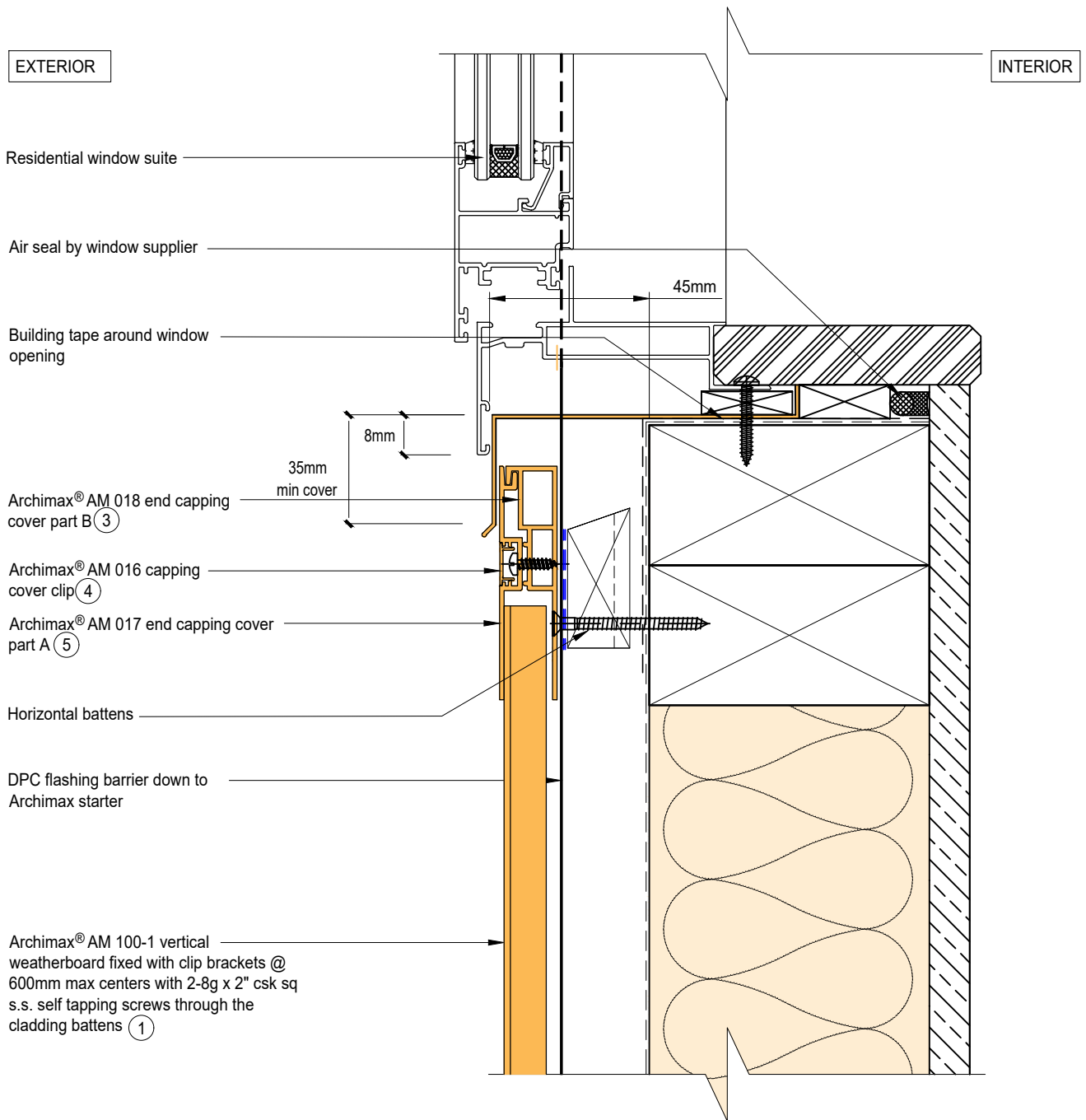


NOTE:

1. Minimum Clearance between the AIR BARRIER and WINDOW JOINERY to be 45mm. Window Joinery should not be permanently fixed until cladding installed.




| | | | | | | |
|--|---|--|--|-------|------|-----|
|  <p>ARCHIMAX ALUMINIUM CLADDING SYSTEM <i>Creating more durable building envelopes</i> www.archimax.co.nz</p> | System AM100-1-VERTICAL WEATHERBOARD | Detail ARCHIMAX® WINDOW SILL DETAIL | Drawing No. Rev. AM-WS-V2.1 D | | | |
| | <p>This drawing is the copyright of Archimax Limited. Modification of details for job specification requirements must be approved by Archimax Ltd. The building designer is ultimately responsible to ensure all building work is designed and constructed according to building code requirements, best code of practice industry guidelines. All components must be supplied by Archimax. Archimax reserves the right to alter or upgrade details at any time without prior notice.</p> | | <table border="1"> <tr> <td>Scale</td> <td>Date</td> </tr> <tr> <td>1:2</td> <td>NOV23</td> </tr> </table> | Scale | Date | 1:2 |
| Scale | Date | | | | | |
| 1:2 | NOV23 | | | | | |



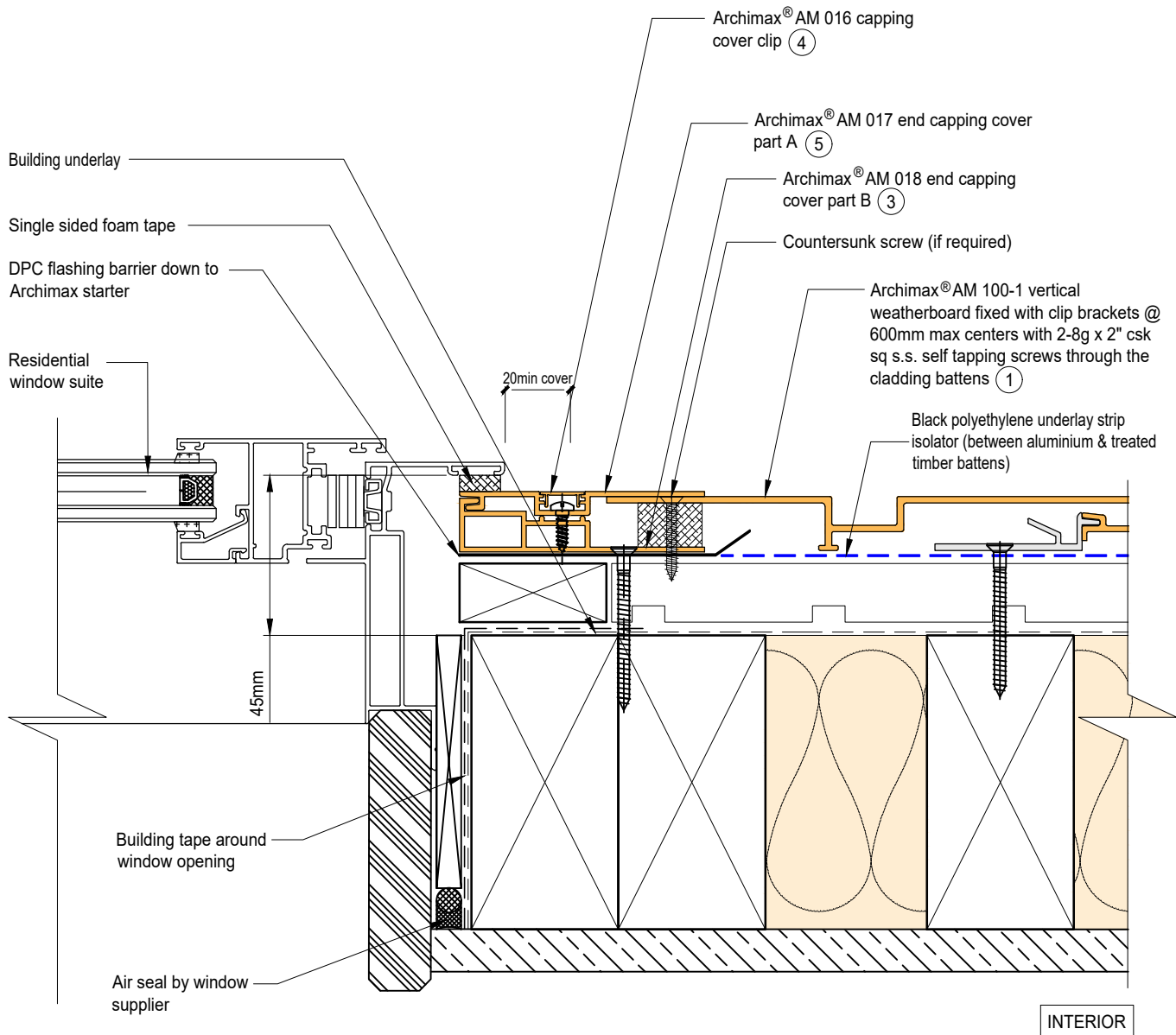
NOTE:

1. Minimum Clearance between the AIR BARRIER and WINDOW JOINERY to be 45mm. Window Joinery should not be permanently fixed until cladding installed.



| | | | | | | |
|--|---|--|--|-------|------|-----|
|  <p>ARCHIMAX ALUMINIUM CLADDING SYSTEM <i>Creating more durable building envelopes</i> www.archimax.co.nz</p> | System AM100-1-VERTICAL WEATHERBOARD | Detail ARCHIMAX® WINDOW SILL DETAIL | Drawing No. Rev. AM-WS-V2.2 D | | | |
| | <p>This drawing is the copyright of Archimax Limited. Modification of details for job specification requirements must be approved by Archimax Ltd. The building designer is ultimately responsible to ensure all building work is designed and constructed according to building code requirements, best code of practice industry guidelines. All components must be supplied by Archimax. Archimax reserves the right to alter or upgrade details at any time without prior notice.</p> | | <table border="1"> <tr> <td>Scale</td> <td>Date</td> </tr> <tr> <td>1:2</td> <td>NOV23</td> </tr> </table> | Scale | Date | 1:2 |
| Scale | Date | | | | | |
| 1:2 | NOV23 | | | | | |


EXTERIOR



NOTE:

1. Minimum Clearance between the AIR BARRIER and WINDOW JOINERY to be 45mm. Window Joinery should not be permanently fixed until cladding installed.



| | | | | |
|--|---|--|-------------------------|--------------|
|  <p>ARCHIMAX ALUMINIUM CLADDING SYSTEM <i>Creating more durable building envelopes</i> www.archimax.co.nz</p> | System AM100-1-VERTICAL WEATHERBOARD | Detail ARCHIMAX® WINDOW JAMB DETAIL | Drawing No. AM-WJ-V3 | Rev. D |
| | <p>This drawing is the copyright of Archimax Limited. Modification of details for job specification requirements must be approved by Archimax Ltd. The building designer is ultimately responsible to ensure all building work is designed and constructed according to building code requirements, best code of practice industry guidelines. All components must be supplied by Archimax. Archimax reserves the right to alter or upgrade details at any time without prior notice.</p> | | | Scale 1:2 |

EXTERIOR

INTERIOR

Building Underlay
 Horizontal Battens
 Archimax® clip bracket AM 029

110

Black polyethylene underlay strip
 isolator (between aluminium & treated
 timber battens)

20.34

Archimax® AM 100-1 vertical
 weatherboard fixed with clip brackets @
 600mm max centers with 2-8g x 2" csk
 sq s.s. self tapping screws through the
 cladding battens ①

50

20

DPC flashing barrier down to
 Archimax starter

92.78

74.71

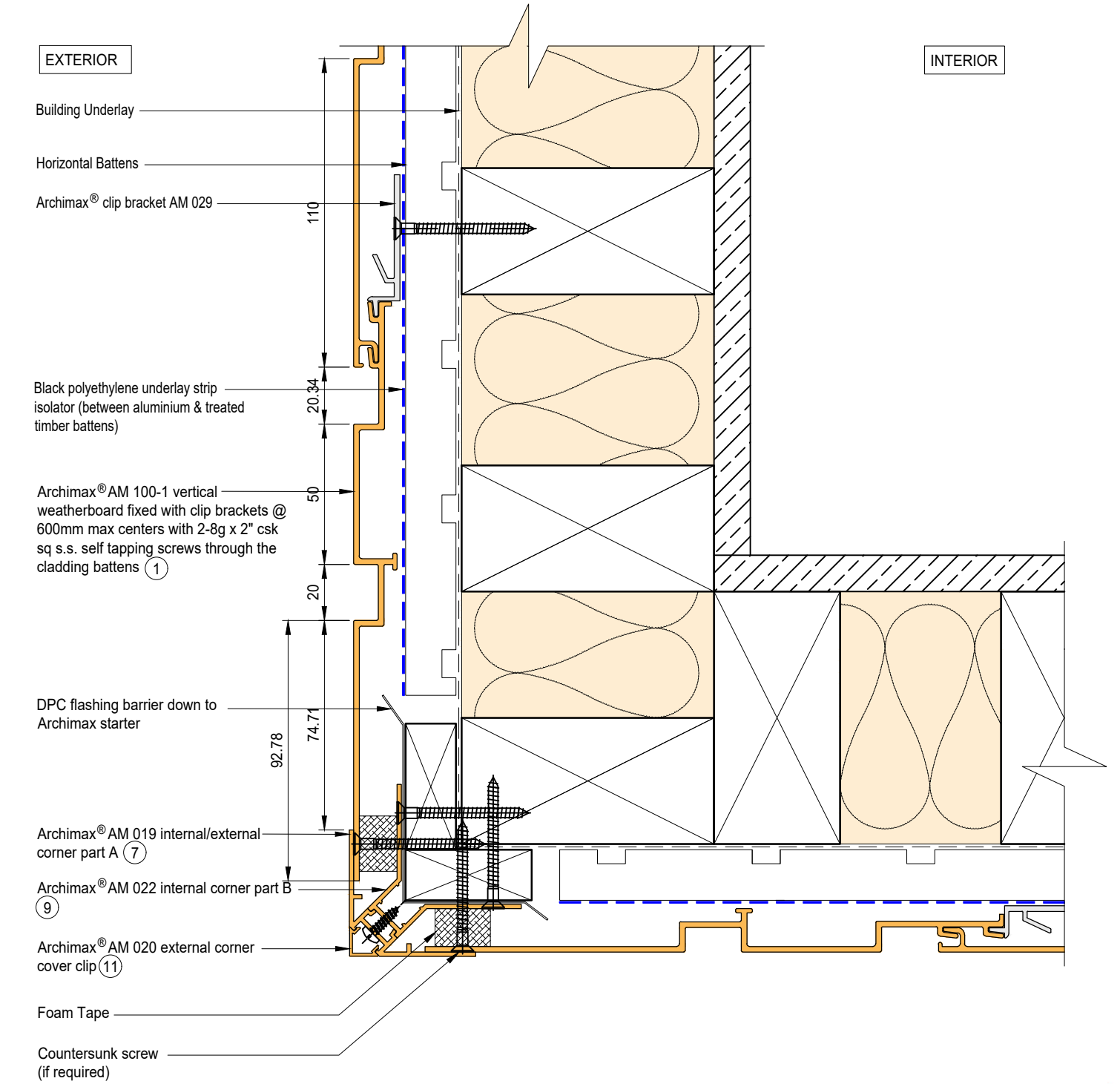
Archimax® AM 019 internal/external
 corner part A ⑦

Archimax® AM 022 internal corner part B
 ⑨

Archimax® AM 020 external corner
 cover clip ⑪

Foam Tape

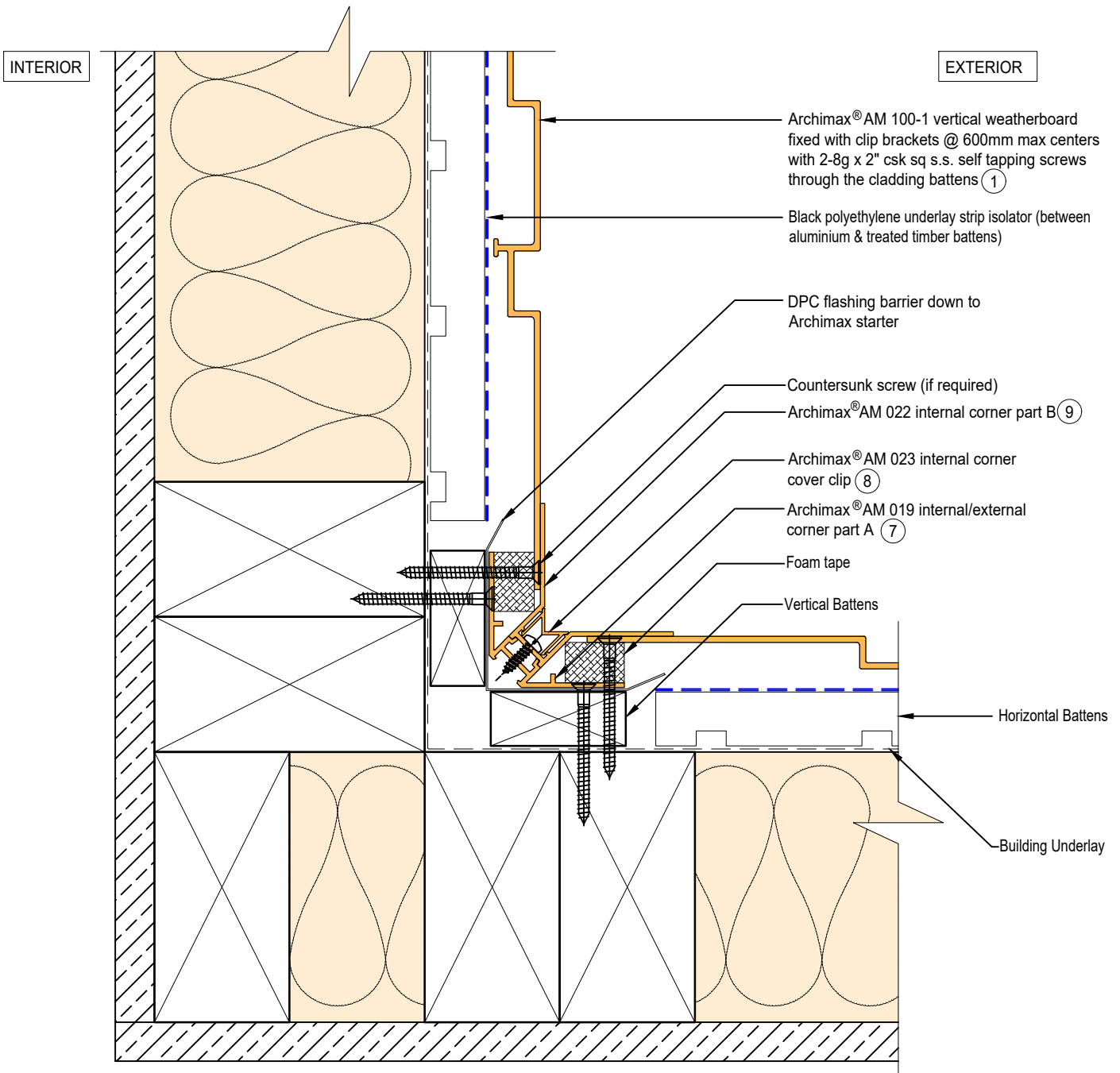
Countersunk screw
 (if required)




BRANZ Appraised
 Appraisal No. 1173 [2021]

ARCHIMAX
 ALUMINIUM CLADDING SYSTEM
Creating more durable building envelopes
 www.archimax.co.nz

| | | |
|--|---|---------------------------------|
| System AM100-1-VERTICAL WEATHERBOARD | Detail ARCHIMAX® EXTERNAL CORNER DETAIL | Drawing No. Rev. AM-EXT-V4 D |
| This drawing is the copyright of Archimax Limited. Modification of details for job specification requirements must be approved by Archimax Ltd. The building designer is ultimately responsible to ensure all building work is designed and constructed according to building code requirements, best code of practice industry guidelines. All components must be supplied by Archimax. Archimax reserves the right to alter or upgrade details at any time without prior notice. | | Scale Date 1:2 NOV23 |



| | | | |
|--|---|--|---|
|  <p>ARCHIMAX ALUMINIUM CLADDING SYSTEM <i>Creating more durable building envelopes</i> www.archimax.co.nz</p> | <p>System AM100-1-VERTICAL WEATHERBOARD</p> | <p>Detail ARCHIMAX® INTERNAL CORNER DETAIL</p> | <p>Drawing No. Rev. AM-INT-V5 D</p> |
| | <p>This drawing is the copyright of Archimax Limited. Modification of details for job specification requirements must be approved by Archimax Ltd. The building designer is ultimately responsible to ensure all building work is designed and constructed according to building code requirements, best code of practice industry guidelines. All components must be supplied by Archimax. Archimax reserves the right to alter or upgrade details at any time without prior notice.</p> | | <p>Scale Date 1:2 NOV23</p> |

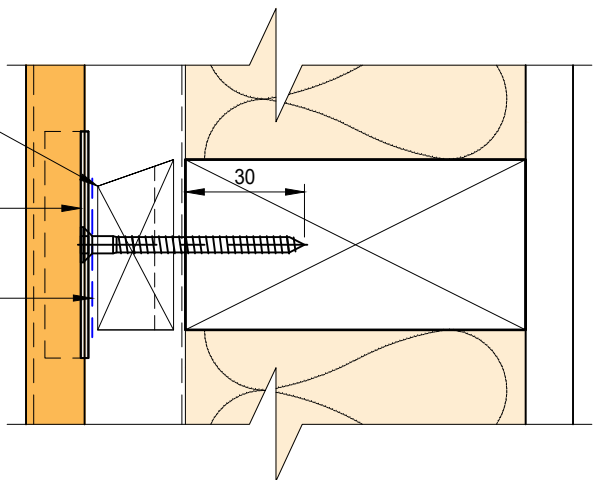
EXTERIOR

INTERIOR

Castellated timber batten (Horizontal)

Archimax® clip bracket AM 029

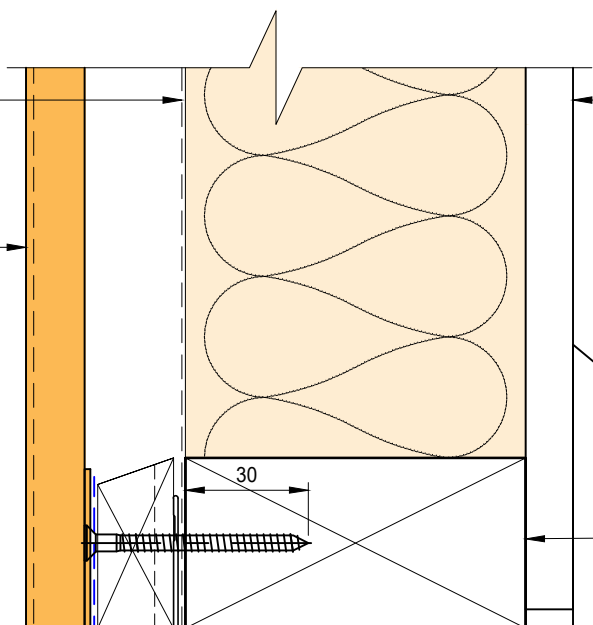
Black polyethylene underlay strip isolator (between aluminium & treated timber battens)



Building underlay

Interior lining

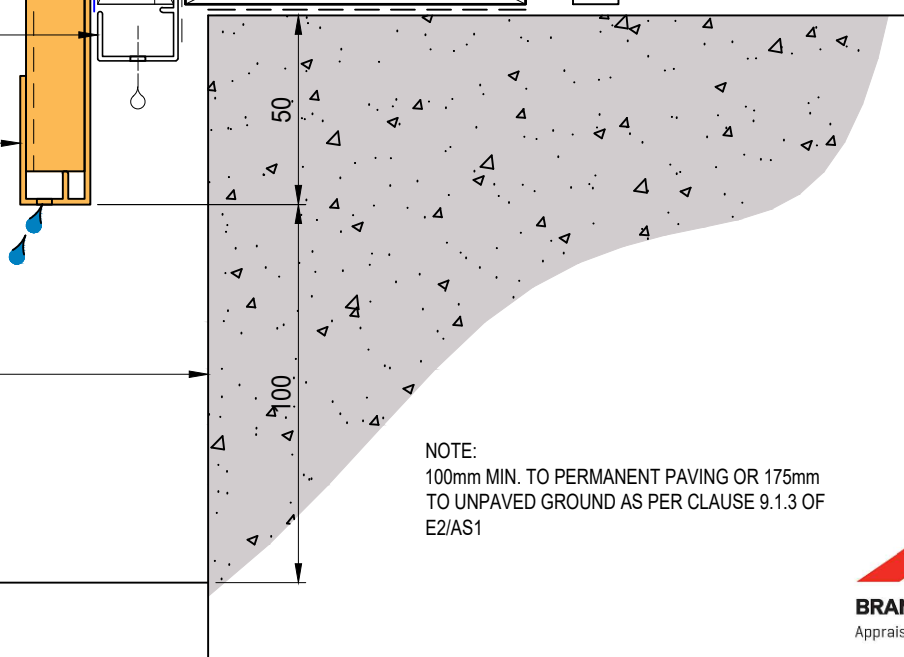
① Archimax® AM 100-1 vertical weatherboard fixed with clip brackets @ 600mm max centers with 2-8g x 2" csk sq s.s. self tapping screws through the cladding battens



Bottom plate over DPC

Cavity vent strip (By others)

② Archimax® AM 009 board starter



Concrete slab or brickwork (By others)

Finish ground level

NOTE:
100mm MIN. TO PERMANENT PAVING OR 175mm TO UNPAVED GROUND AS PER CLAUSE 9.1.3 OF E2/AS1



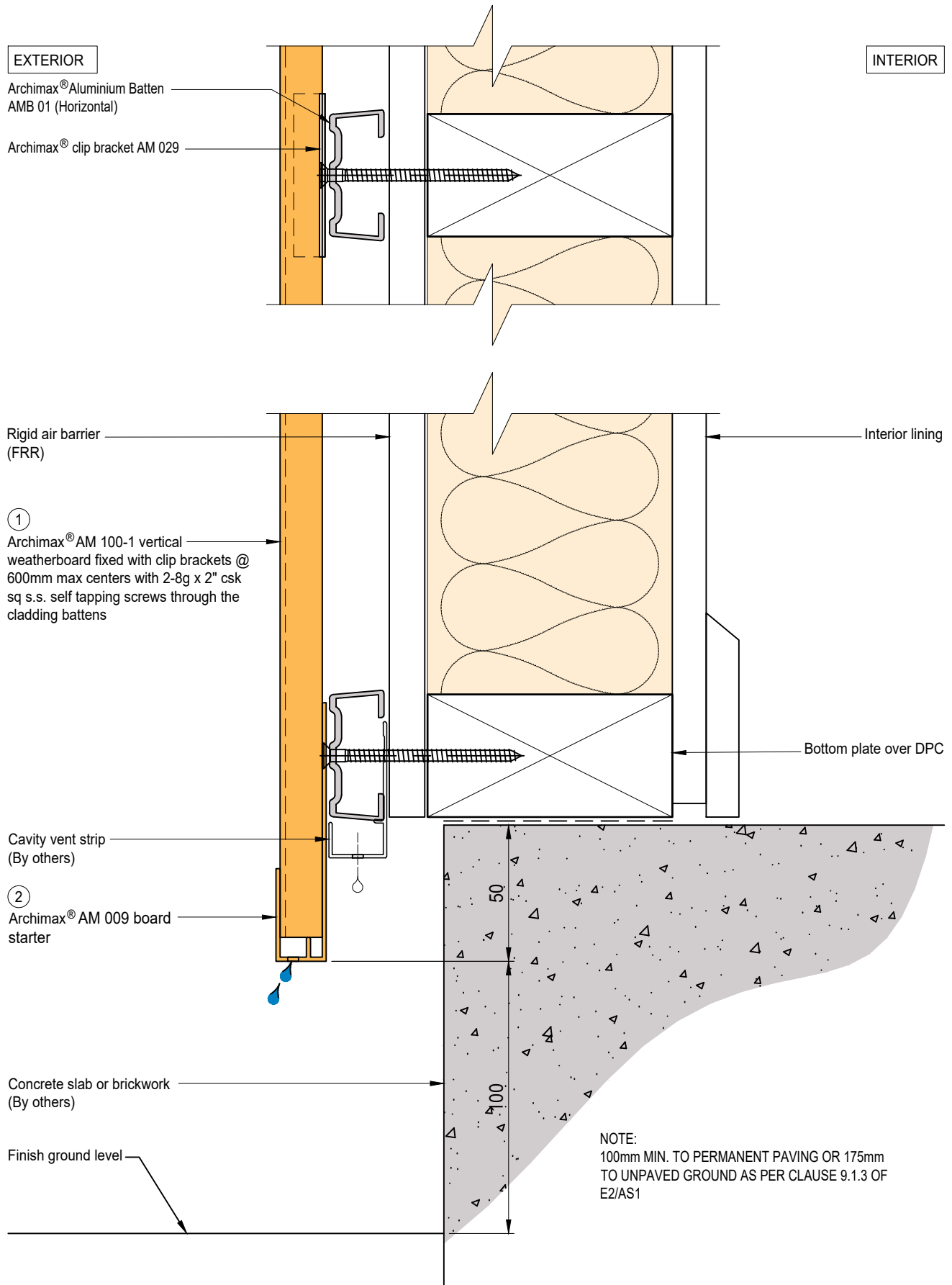
System
AM100-1-VERTICAL WEATHERBOARD

Detail
ARCHIMAX® CONCRETE FLOOR BOARD STARTER DETAIL - TIMBER

Drawing No. Rev.
AM-CBS-V6.1 D

This drawing is the copyright of Archimax Limited. Modification of details for job specification requirements must be approved by Archimax Ltd. The building designer is ultimately responsible to ensure all building work is designed and constructed according to building code requirements, best code of practice industry guidelines. All components must be supplied by Archimax. Archimax reserves the right to alter or upgrade details at any time without prior notice.

Scale Date
1:2 NOV23



EXTERIOR

INTERIOR

Building underlay

Archimax® AM 100-1 vertical weatherboard fixed with clip brackets @ 600mm max centers with 2-8g x 2" csk sq s.s. self tapping screws through the cladding battens ①

Black polyethylene underlay strip isolator (between aluminium & treated timber battens)

Flexible flashing tape

Cavity vent strip

Archimax AM 009 board starter ②

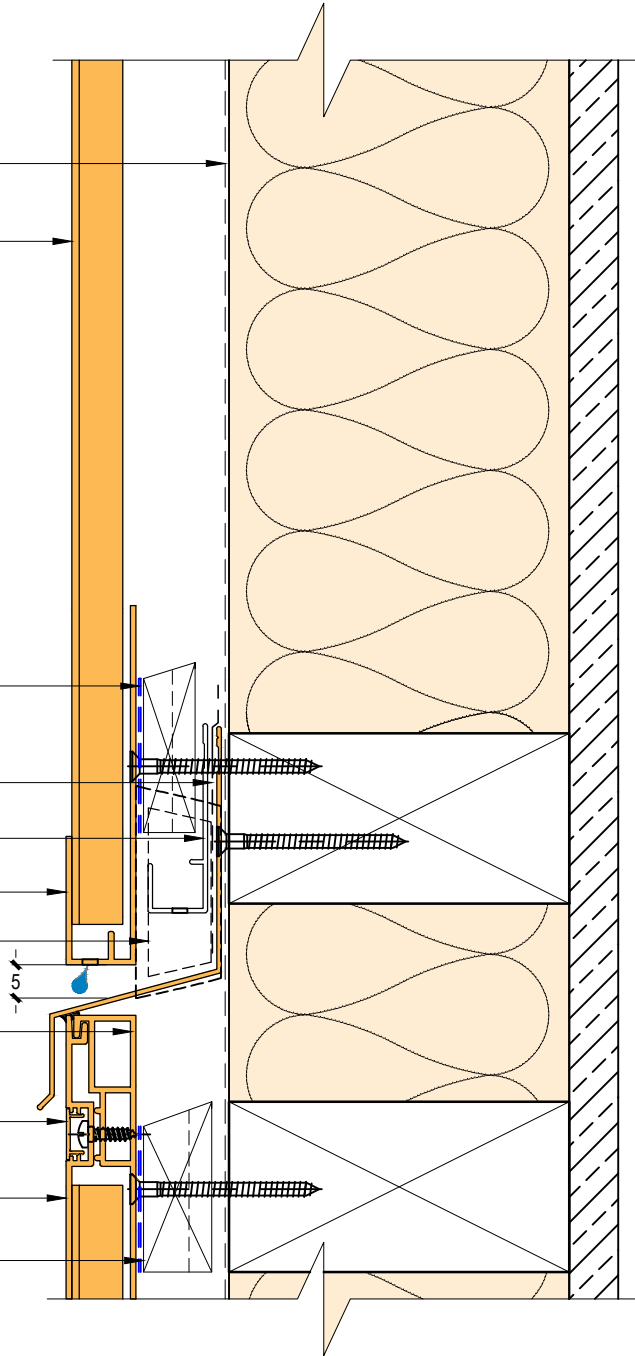
Inter-Storey flashing stop ends

Archimax® AM 018 end capping cover part B ③

Archimax® AM 016 capping cover clip ④

Archimax® AM 017 end capping cover part A ⑤

Horizontal battens

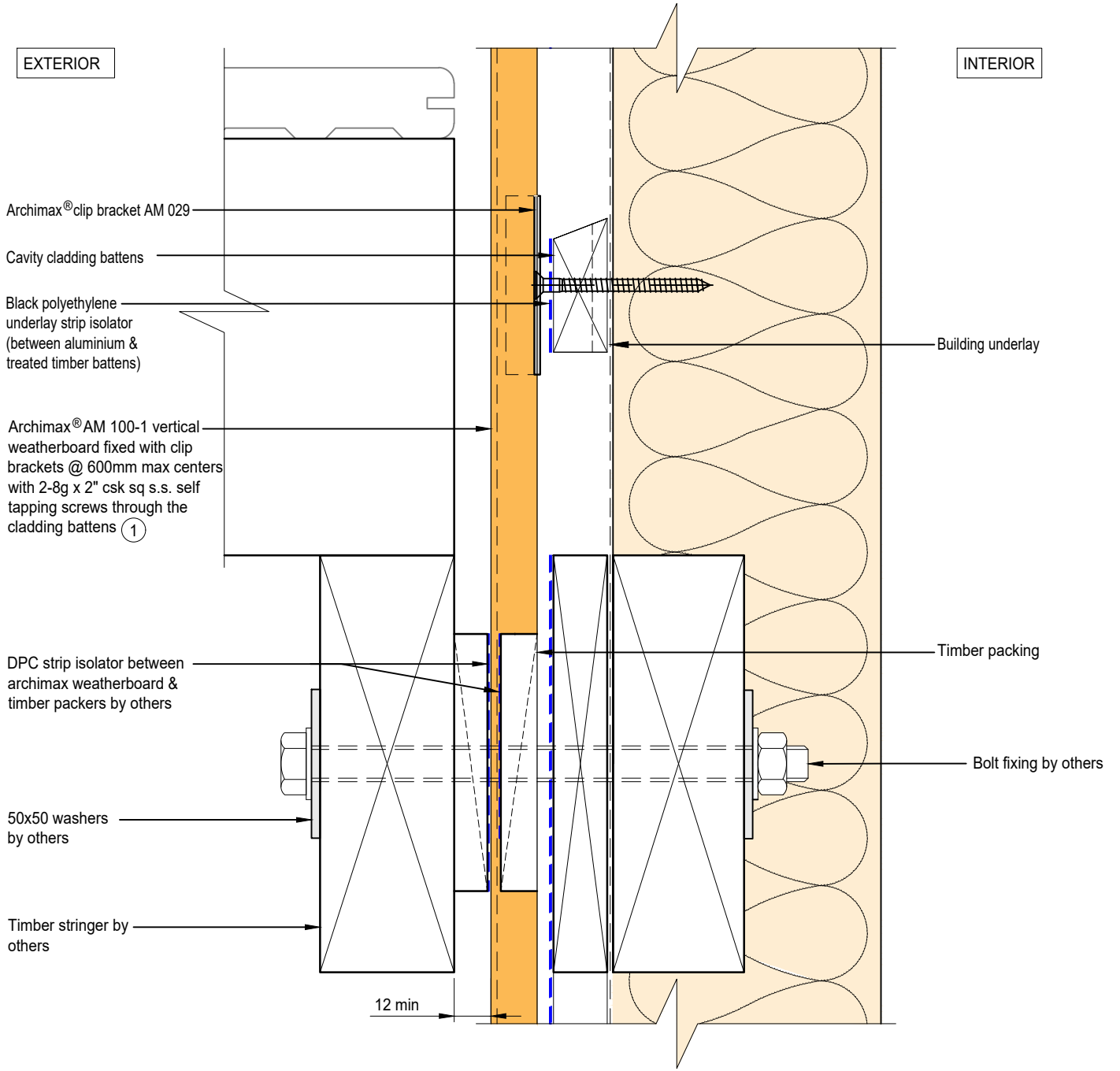



NOTE:
STOP ENDS TO BE INSTALLED AT INTER-STOREY FLASHING ENDS



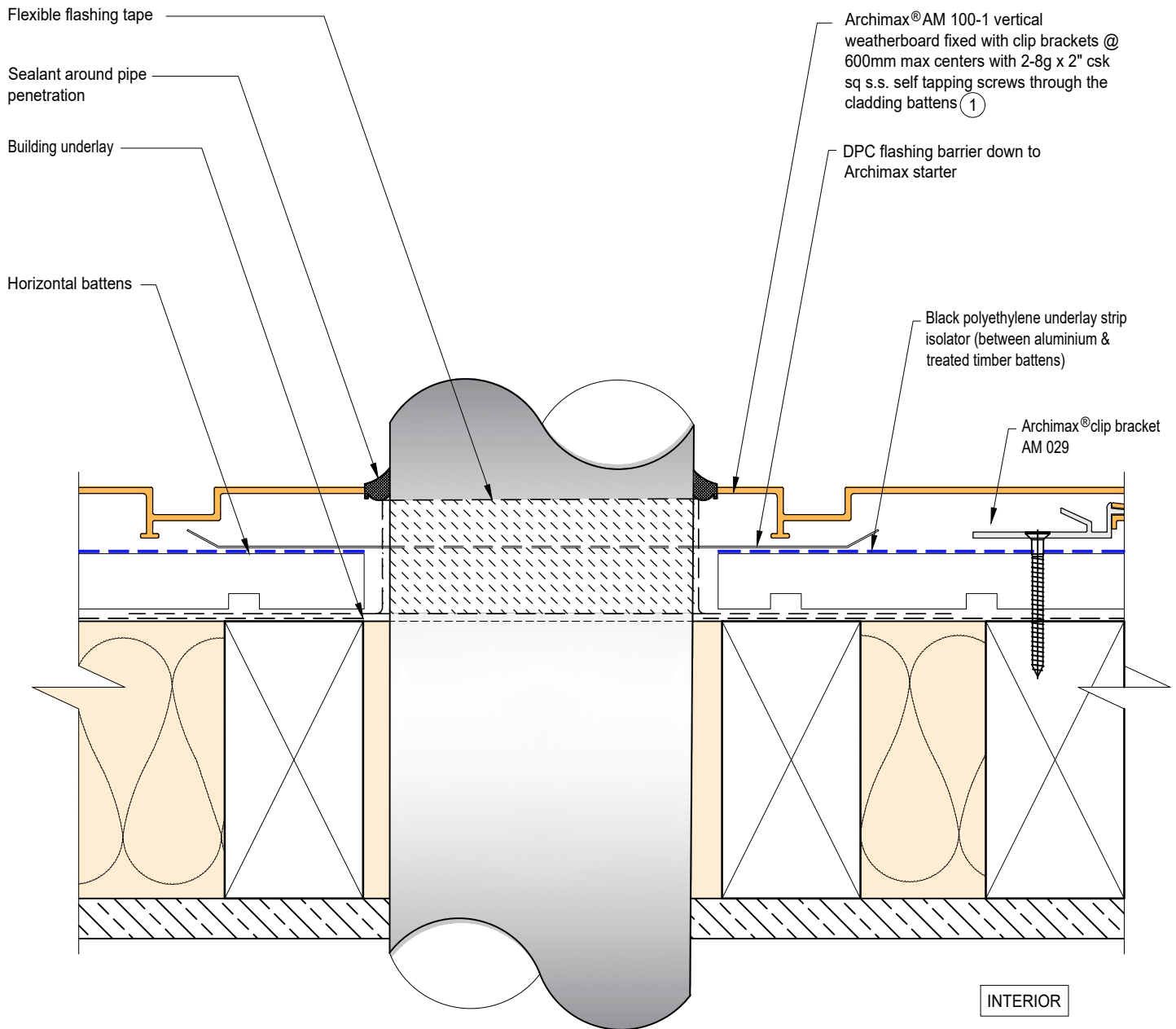
ARCHIMAX
ALUMINIUM CLADDING SYSTEM
Creating more durable building envelopes
www.archimax.co.nz

| | | | |
|--|--|-------------------------|---------------|
| System AM100-1-VERTICAL WEATHERBOARD | Detail ARCHIMAX® HORIZONTAL JOINT DETAIL | Drawing No. AM-HJ-V7 | Rev. D |
| This drawing is the copyright of Archimax Limited. Modification of details for job specification requirements must be approved by Archimax Ltd. The building designer is ultimately responsible to ensure all building work is designed and constructed according to building code requirements, best code of practice industry guidelines. All components must be supplied by Archimax. Archimax reserves the right to alter or upgrade details at any time without prior notice. | | Scale 1:2 | Date NOV23 |



| | | | | |
|--|---|--|-------------------------|--------------|
|  <p>ARCHIMAX ALUMINIUM CLADDING SYSTEM <i>Creating more durable building envelopes</i> www.archimax.co.nz</p> | System AM100-1-VERTICAL WEATHERBOARD | Detail ARCHIMAX® DECK JUNCTION DETAIL | Drawing No. AM-DJ-V8 | Rev. D |
| | <p>This drawing is the copyright of Archimax Limited. Modification of details for job specification requirements must be approved by Archimax Ltd. The building designer is ultimately responsible to ensure all building work is designed and constructed according to building code requirements, best code of practice industry guidelines. All components must be supplied by Archimax. Archimax reserves the right to alter or upgrade details at any time without prior notice.</p> | | | Scale 1:2 |

EXTERIOR



INTERIOR



BRANZ Appraised
Appraisal No. 1173 [2021]

EXTERIOR

INTERIOR

Archimax® AM 100-1 vertical weatherboard fixed with clip brackets @ 600mm max centers with 2-8g x 2" csk sq s.s. self tapping screws through the cladding battens ①

Archimax® clip bracket AM 029

Horizontal battens

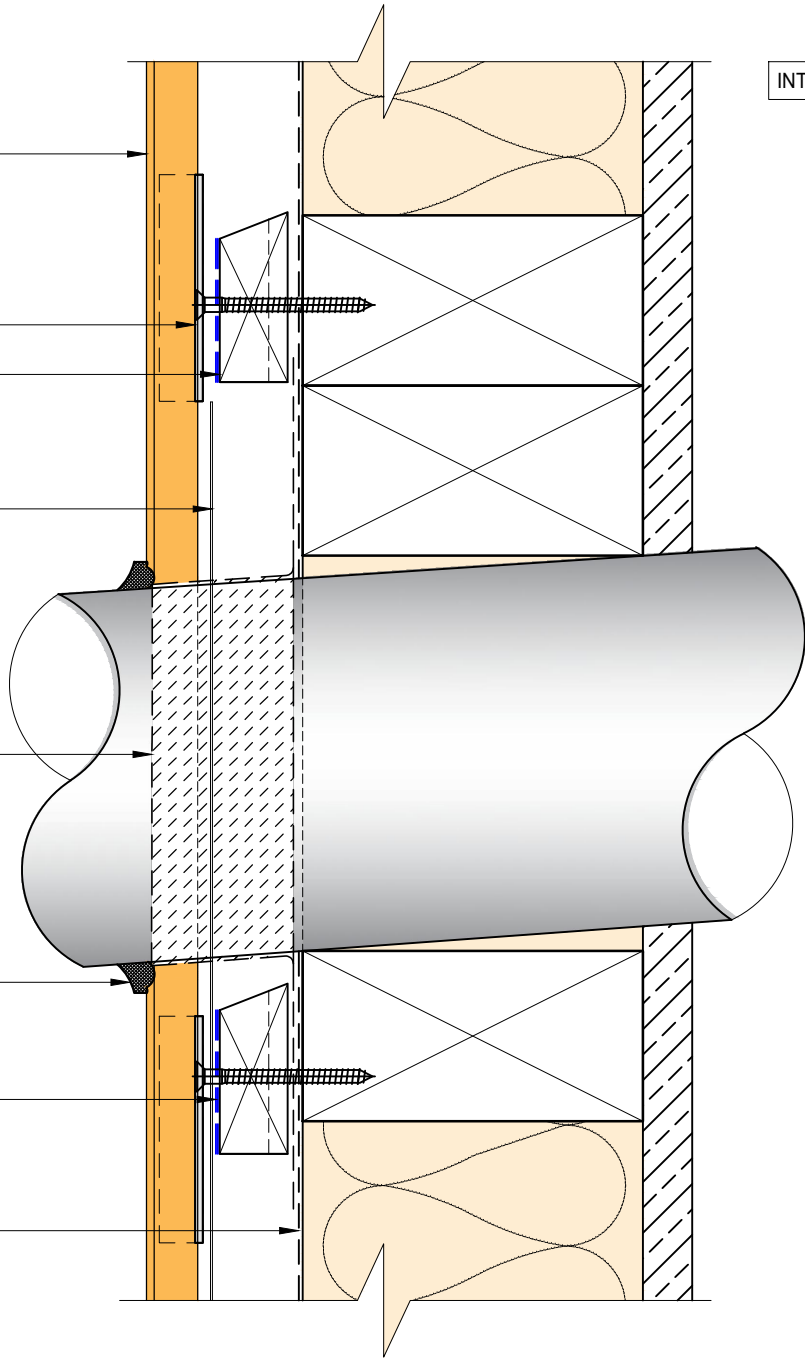
DPC flashing barrier down to Archimax starter

Flexible flashing tape

Sealant around pipe penetration

Black polyethylene underlay strip isolator (between aluminium & treated timber battens)

Building underlay



BRANZ Appraised
Appraisal No. 1173 [2021]

EXTERIOR

INTERIOR

Compressible foam tape

Archimax® AM 018 end capping cover part B (3)

Archimax® AM 016 capping cover clip (4)

Archimax® AM 017 end capping cover part A (5)

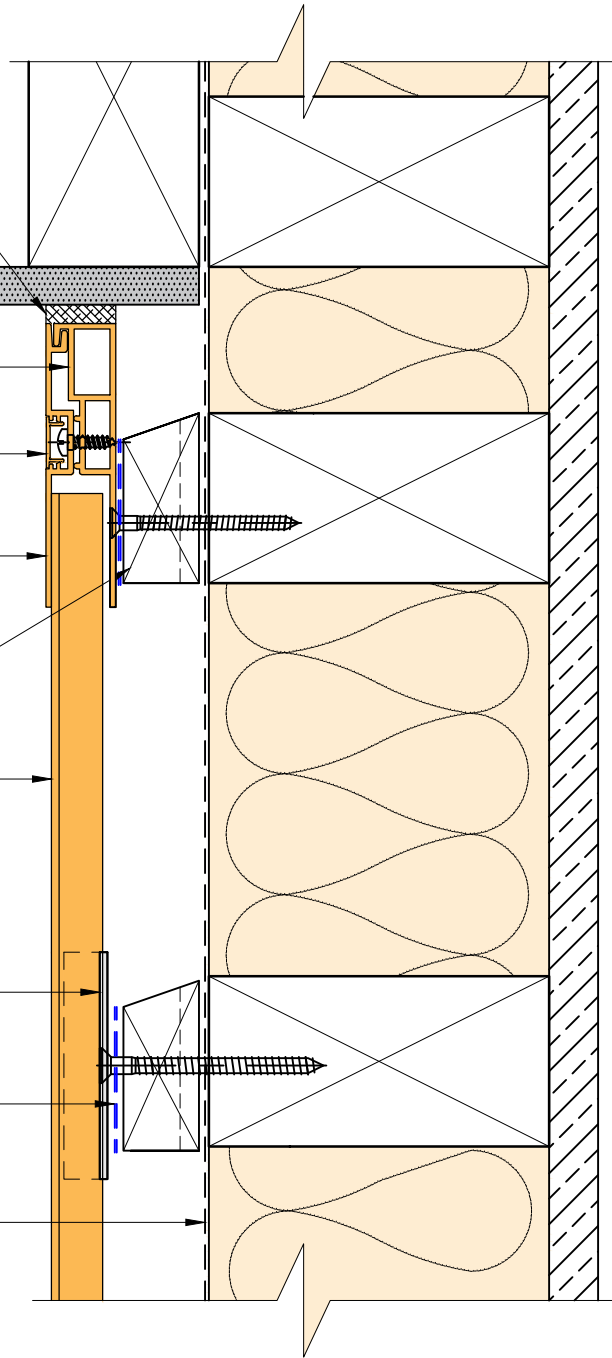
Horizontal battens

Archimax® AM 100-1 vertical weatherboard fixed with clip brackets @ 600mm max centers with 2-8g x 2" csk sq s.s. self tapping screws through the cladding battens (1)

Archimax® clip bracket AM 029

Black polyethylene underlay strip isolator (between aluminium & treated timber battens)

Building underlay



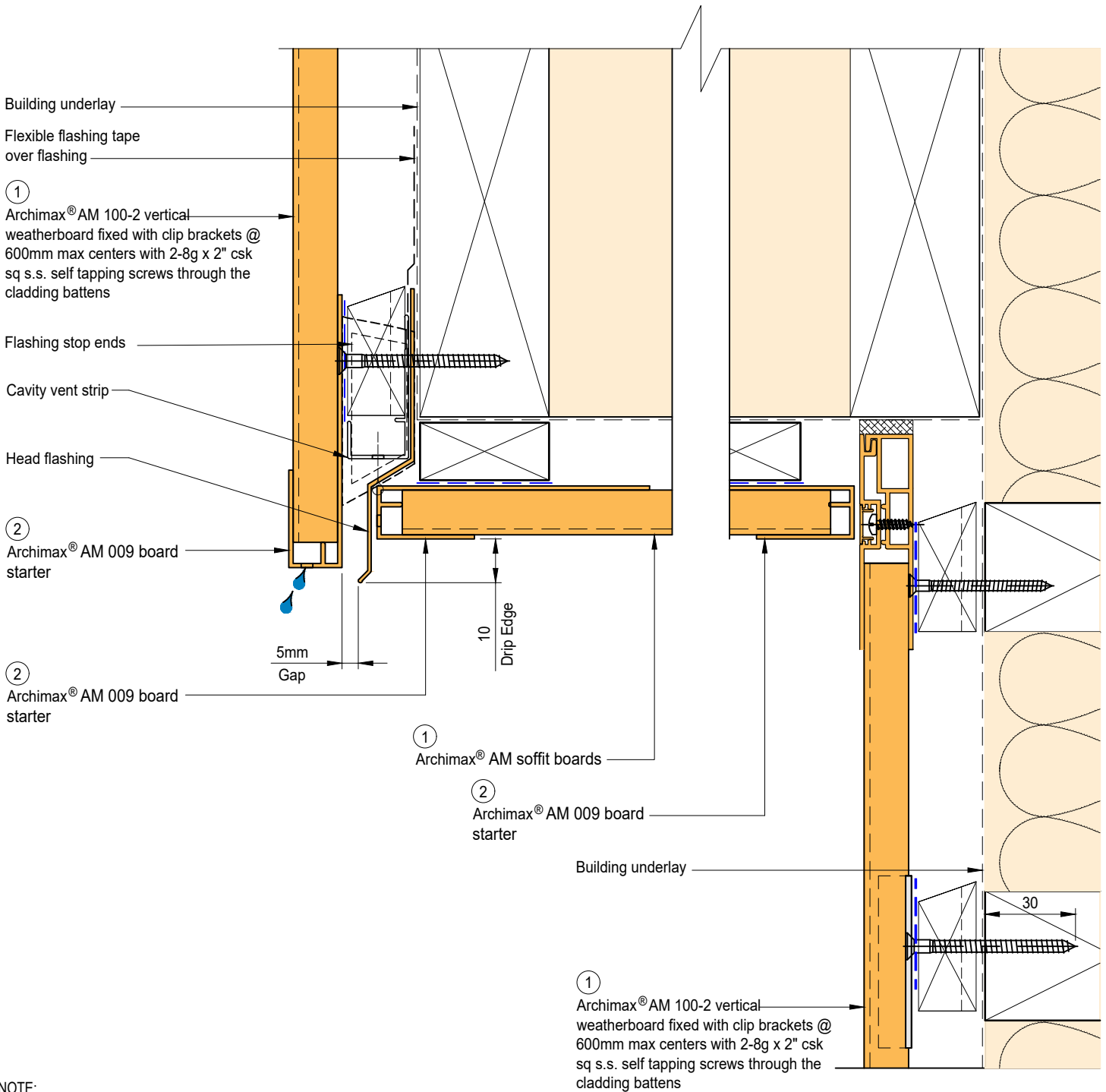
System
AM100-1-VERTICAL WEATHERBOARD

Detail
ARCHIMAX® SOFFIT DETAIL

Drawing No. Rev.
AM-SO-V10 D

This drawing is the copyright of Archimax Limited. Modification of details for job specification requirements must be approved by Archimax Ltd. The building designer is ultimately responsible to ensure all building work is designed and constructed according to building code requirements, best code of practice industry guidelines. All components must be supplied by Archimax. Archimax reserves the right to alter or upgrade details at any time without prior notice.

Scale Date
1:2 NOV23



NOTE:
STOP ENDS TO BE INSTALLED AT FLASHING ENDS



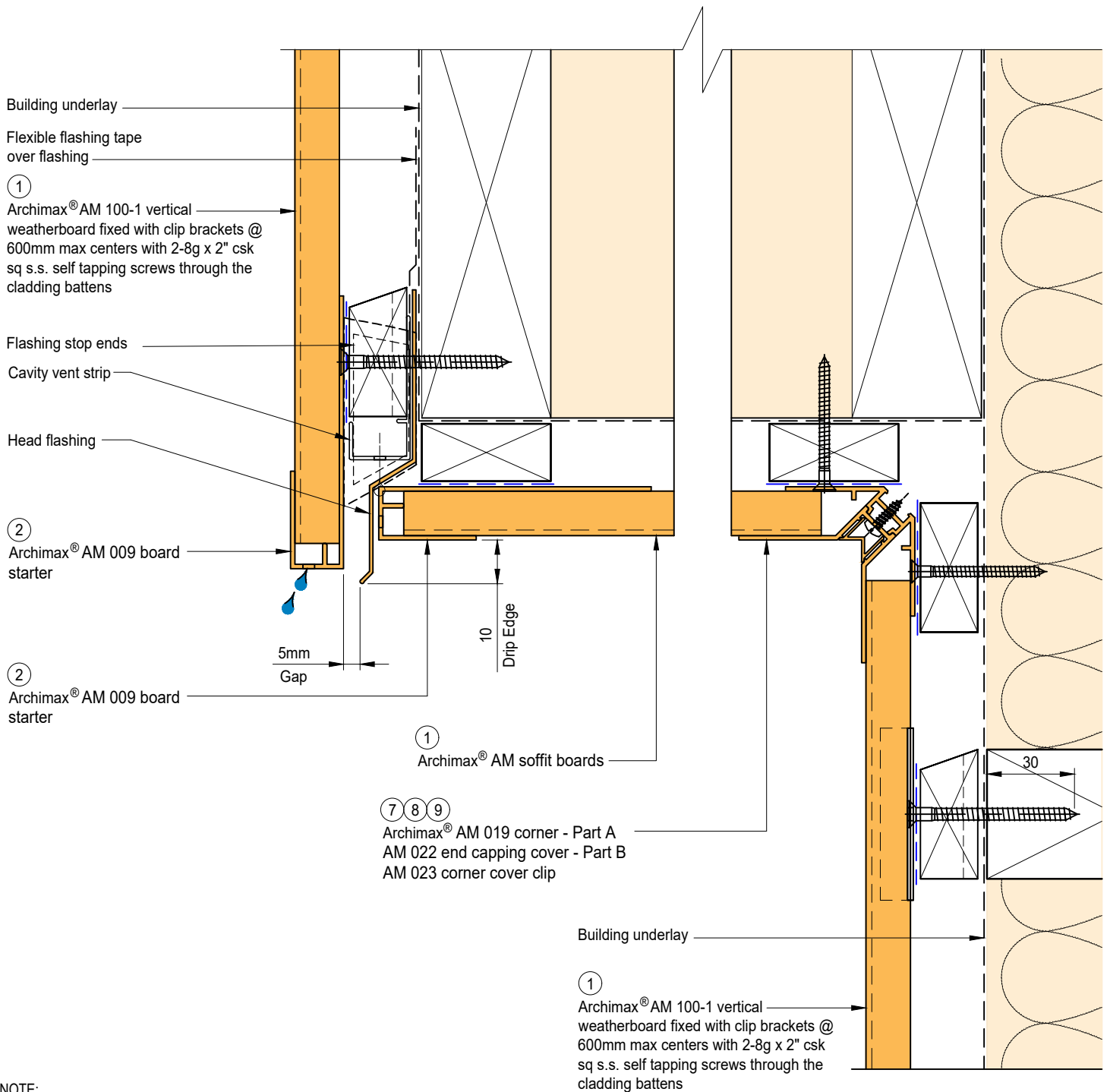
System
AM100-1-VERTICAL WEATHERBOARD

Detail
ARCHIMAX® FACIA, SOFFIT & WALL
DETAIL

Drawing No. Rev.
AM-SO-V11.1 D

This drawing is the copyright of Archimax Limited. Modification of details for job specification requirements must be approved by Archimax Ltd. The building designer is ultimately responsible to ensure all building work is designed and constructed according to building code requirements, best code of practice industry guidelines. All components must be supplied by Archimax. Archimax reserves the right to alter or upgrade details at any time without prior notice.

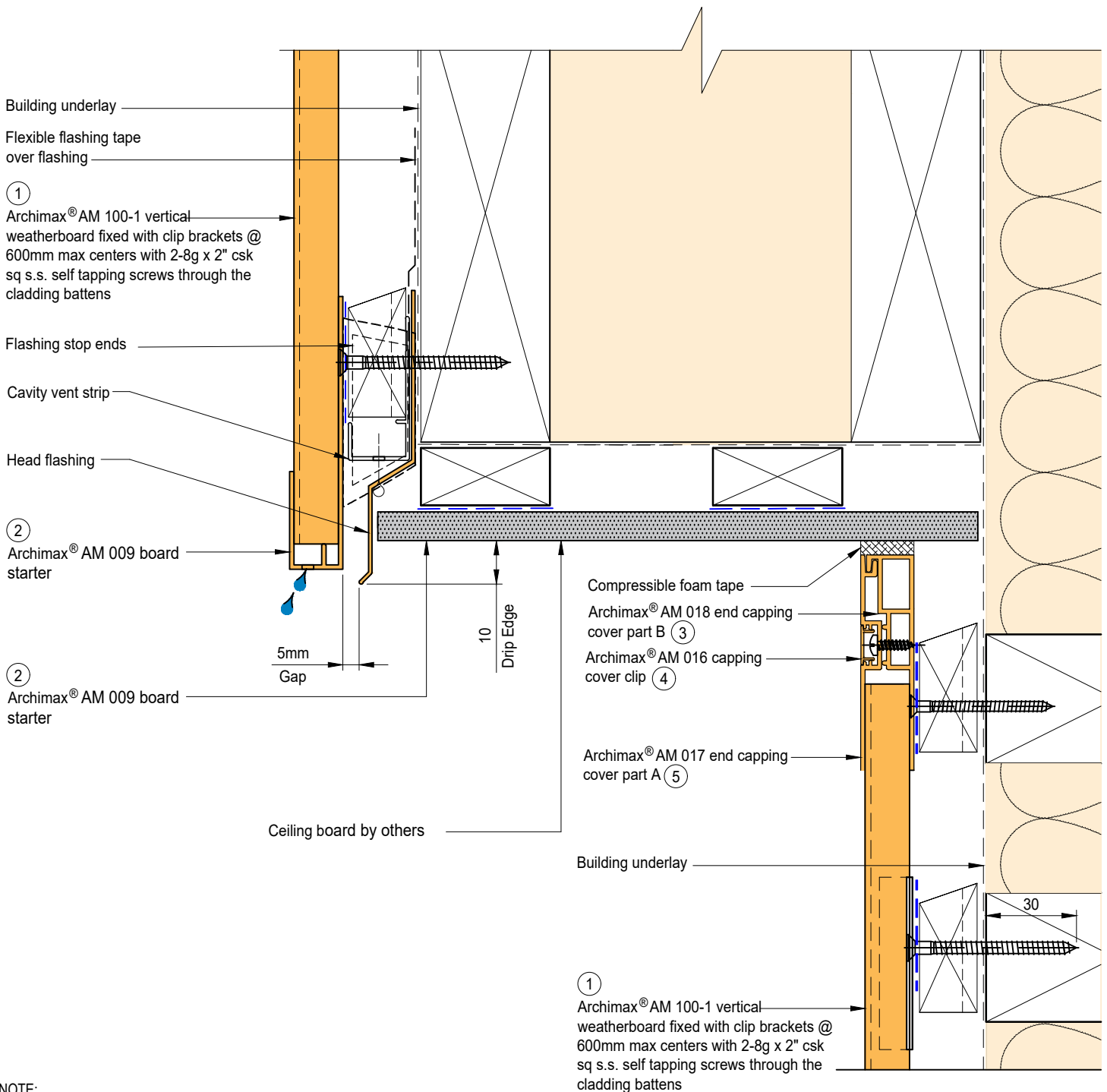
Scale Date
1:2 NOV23



NOTE:
STOP ENDS TO BE INSTALLED AT FLASHING ENDS




| | | | | |
|--|---|---|-----------------------------------|--------------|
|  <p>ARCHIMAX ALUMINIUM CLADDING SYSTEM <i>Creating more durable building envelopes</i> www.archimax.co.nz</p> | System AM100-1-VERTICAL WEATHERBOARD | Detail ARCHIMAX® FACIA, SOFFIT & WALL DETAIL (90° SOFFIT / WALL) DETAIL | Drawing No. Rev. AM-SO-V11.2 D | |
| | <p>This drawing is the copyright of Archimax Limited. Modification of details for job specification requirements must be approved by Archimax Ltd. The building designer is ultimately responsible to ensure all building work is designed and constructed according to building code requirements, best code of practice industry guidelines. All components must be supplied by Archimax. Archimax reserves the right to alter or upgrade details at any time without prior notice.</p> | | | Scale 1:2 |



NOTE:
STOP ENDS TO BE INSTALLED AT FLASHING ENDS



| | | | | | | |
|--|---|--|--|-------|------|-----|
|  <p>ARCHIMAX ALUMINIUM CLADDING SYSTEM <i>Creating more durable building envelopes</i> www.archimax.co.nz</p> | System AM100-1-VERTICAL WEATHERBOARD | Detail ARCHIMAX® FASCIA, BOARD SOFFIT & WALL DETAIL | Drawing No. Rev. AM-SO-V11.3 D | | | |
| | <p>This drawing is the copyright of Archimax Limited. Modification of details for job specification requirements must be approved by Archimax Ltd. The building designer is ultimately responsible to ensure all building work is designed and constructed according to building code requirements, best code of practice industry guidelines. All components must be supplied by Archimax. Archimax reserves the right to alter or upgrade details at any time without prior notice.</p> | | <table border="1"> <tr> <td>Scale</td> <td>Date</td> </tr> <tr> <td>1:2</td> <td>NOV23</td> </tr> </table> | Scale | Date | 1:2 |
| Scale | Date | | | | | |
| 1:2 | NOV23 | | | | | |

EXTERIOR

Selected roofing

Flashing & sealed by others

Archimax® AM 018 end capping cover part B (3)

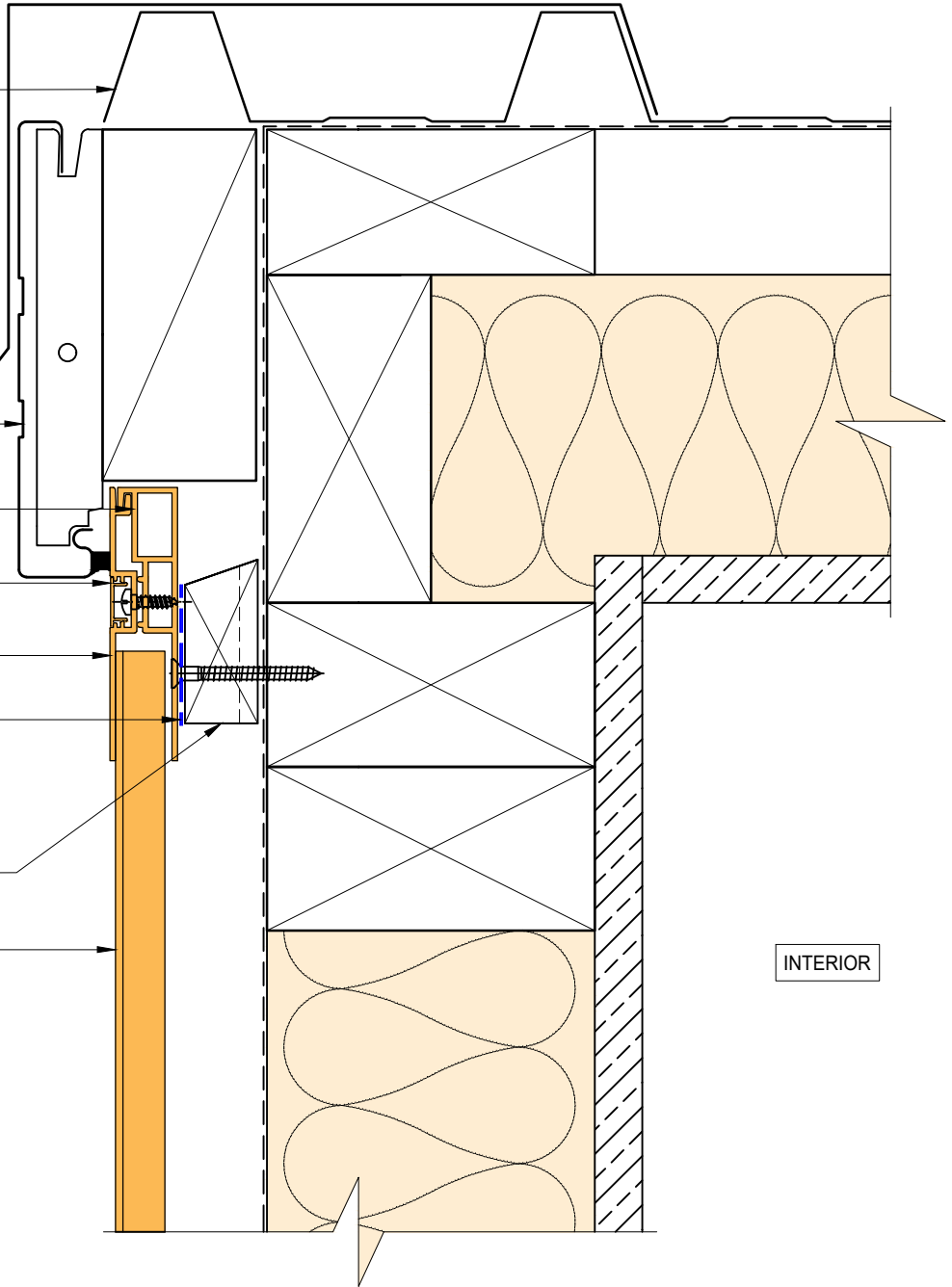
Archimax® AM 016 capping cover clip (4)

Archimax® AM 017 end capping cover part A (5)

Black polyethylene underlay strip isolator (between aluminium & treated timber battens)

Horizontal battens

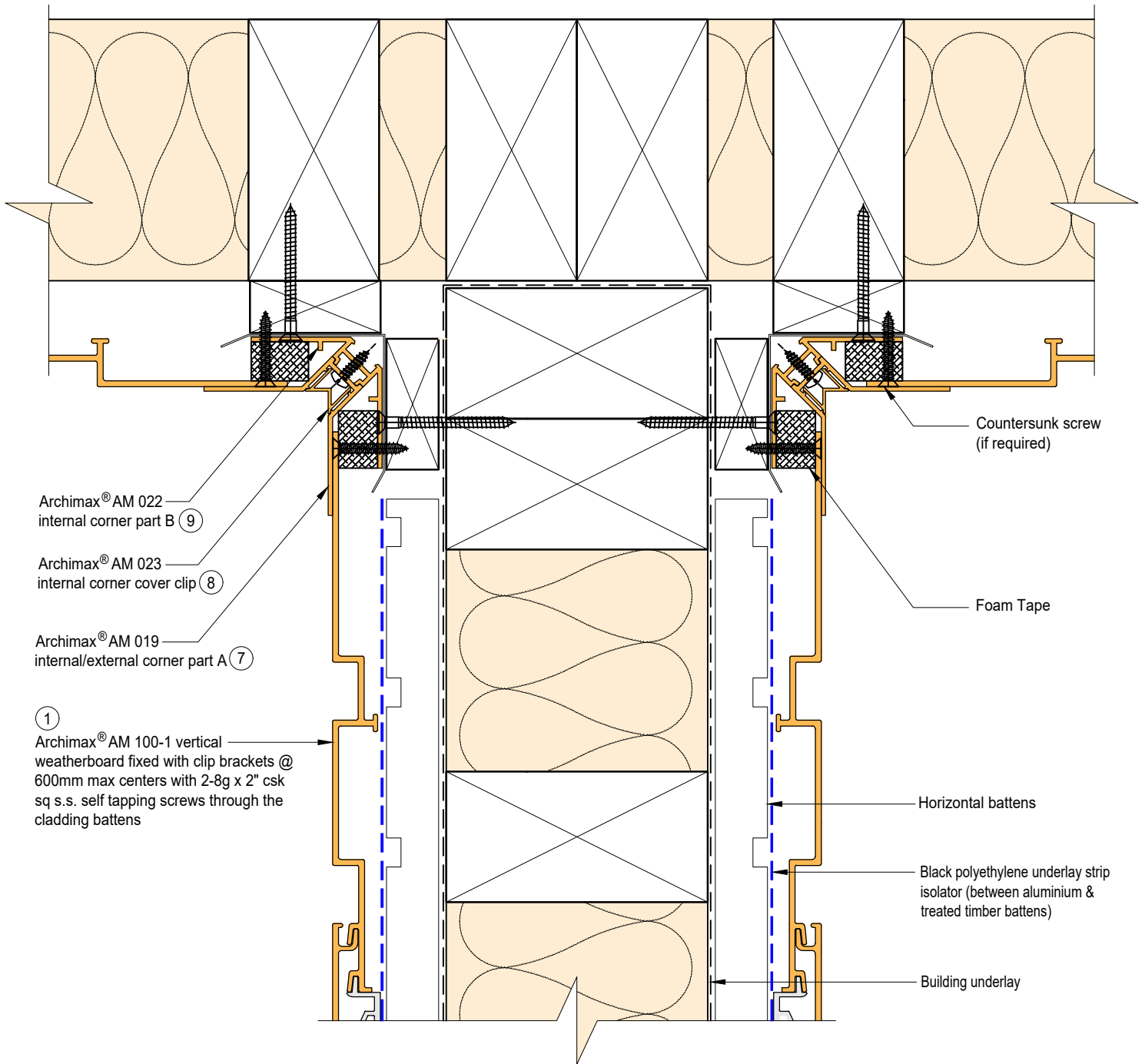
Archimax® AM 100-1 vertical weatherboard fixed with clip brackets @ 600mm max centers with 2-8g x 2" csk sq s.s. self tapping screws through the cladding battens (1)



INTERIOR

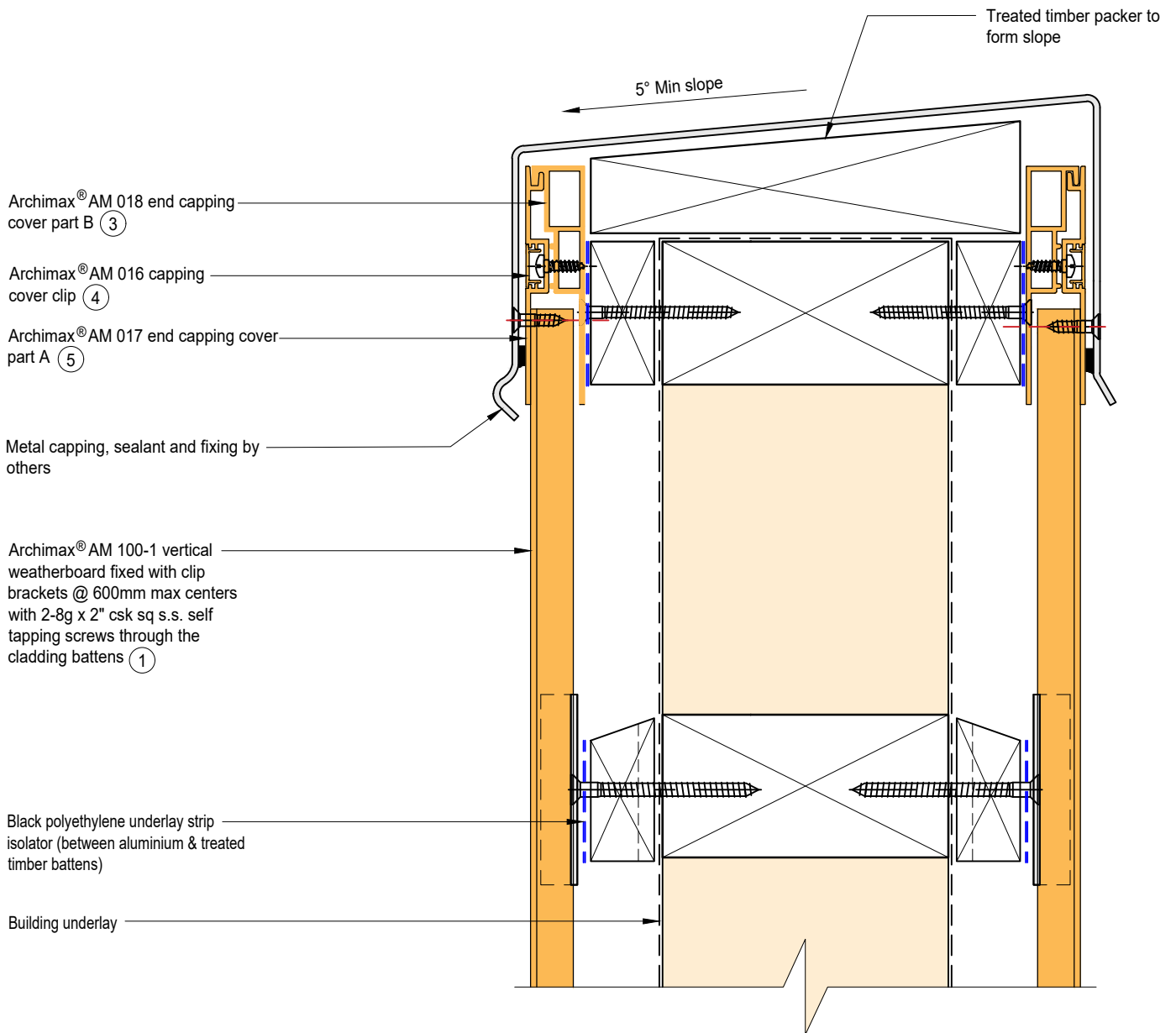


BRANZ Appraised
Appraisal No. 1173 [2021]



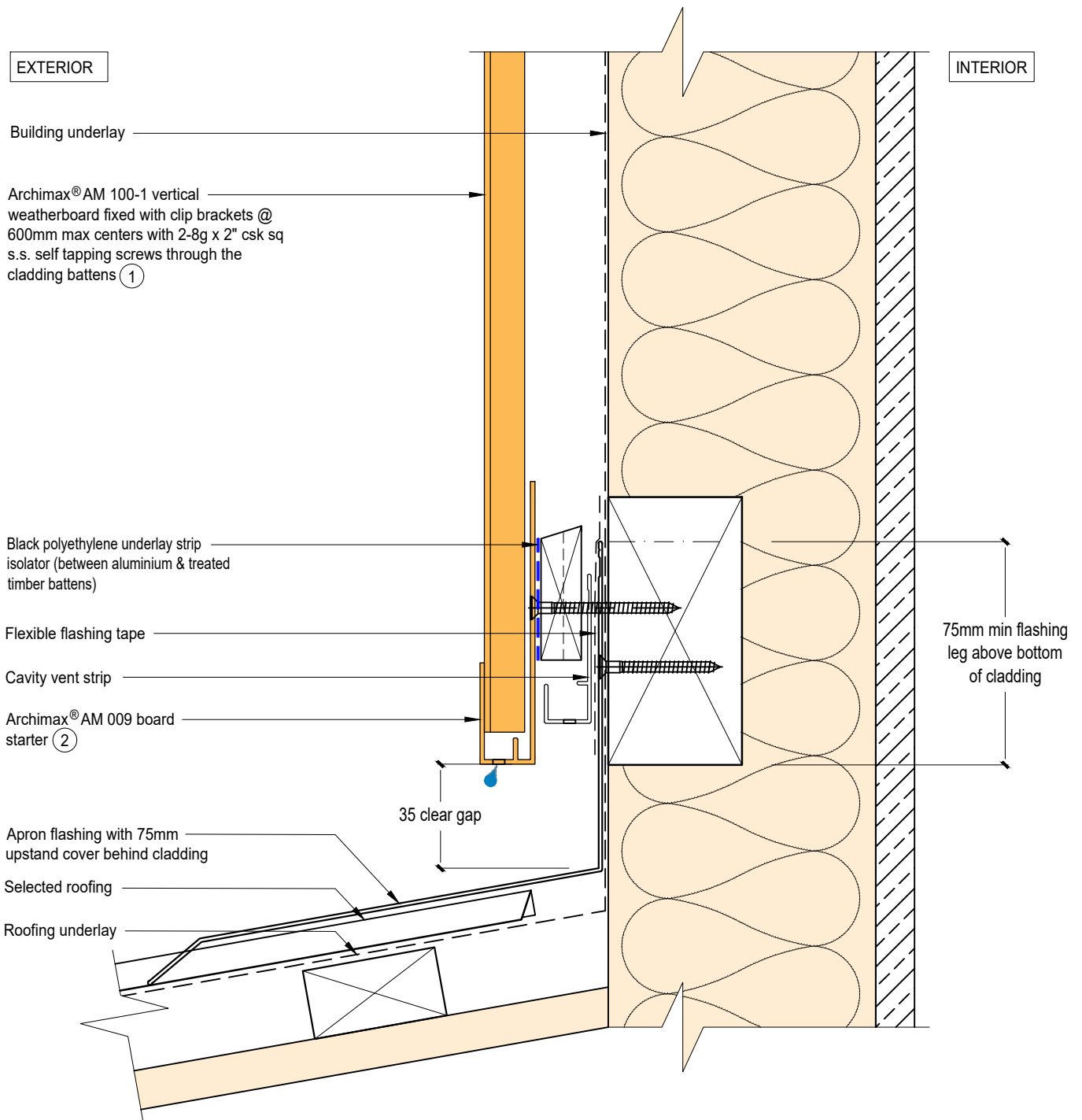

ARCHIMAX
 ALUMINIUM CLADDING SYSTEM
Creating more durable building envelopes
 www.archimax.co.nz

| | | |
|---|---|---------------------------------|
| System AM100-1-VERTICAL WEATHERBOARD | Detail ARCHIMAX® INTERNAL CORNER JUNCTION DETAIL | Drawing No. Rev. AM-BJ-V13 D |
| <small>This drawing is the copyright of Archimax Limited. Modification of details for job specification requirements must be approved by Archimax Ltd. The building designer is ultimately responsible to ensure all building work is designed and constructed according to building code requirements, best code of practice industry guidelines. All components must be supplied by Archimax. Archimax reserves the right to alter or upgrade details at any time without prior notice.</small> | | Scale 1:2 Date NOV23 |




ARCHIMAX
ALUMINIUM CLADDING SYSTEM
Creating more durable building envelopes
www.archimax.co.nz

| | | |
|---|---|----------------------------------|
| System AM100-1-VERTICAL WEATHERBOARD | Detail ARCHIMAX® PARAPET WITH CAVITY DETAIL | Drawing No. Rev. AM-PAR-V14 D |
| <small>This drawing is the copyright of Archimax Limited. Modification of details for job specification requirements must be approved by Archimax Ltd. The building designer is ultimately responsible to ensure all building work is designed and constructed according to building code requirements, best code of practice industry guidelines. All components must be supplied by Archimax. Archimax reserves the right to alter or upgrade details at any time without prior notice.</small> | | Scale 1:2 |
| | | Date NOV23 |




ARCHIMAX
 ALUMINIUM CLADDING SYSTEM
Creating more durable building envelopes
 www.archimax.co.nz

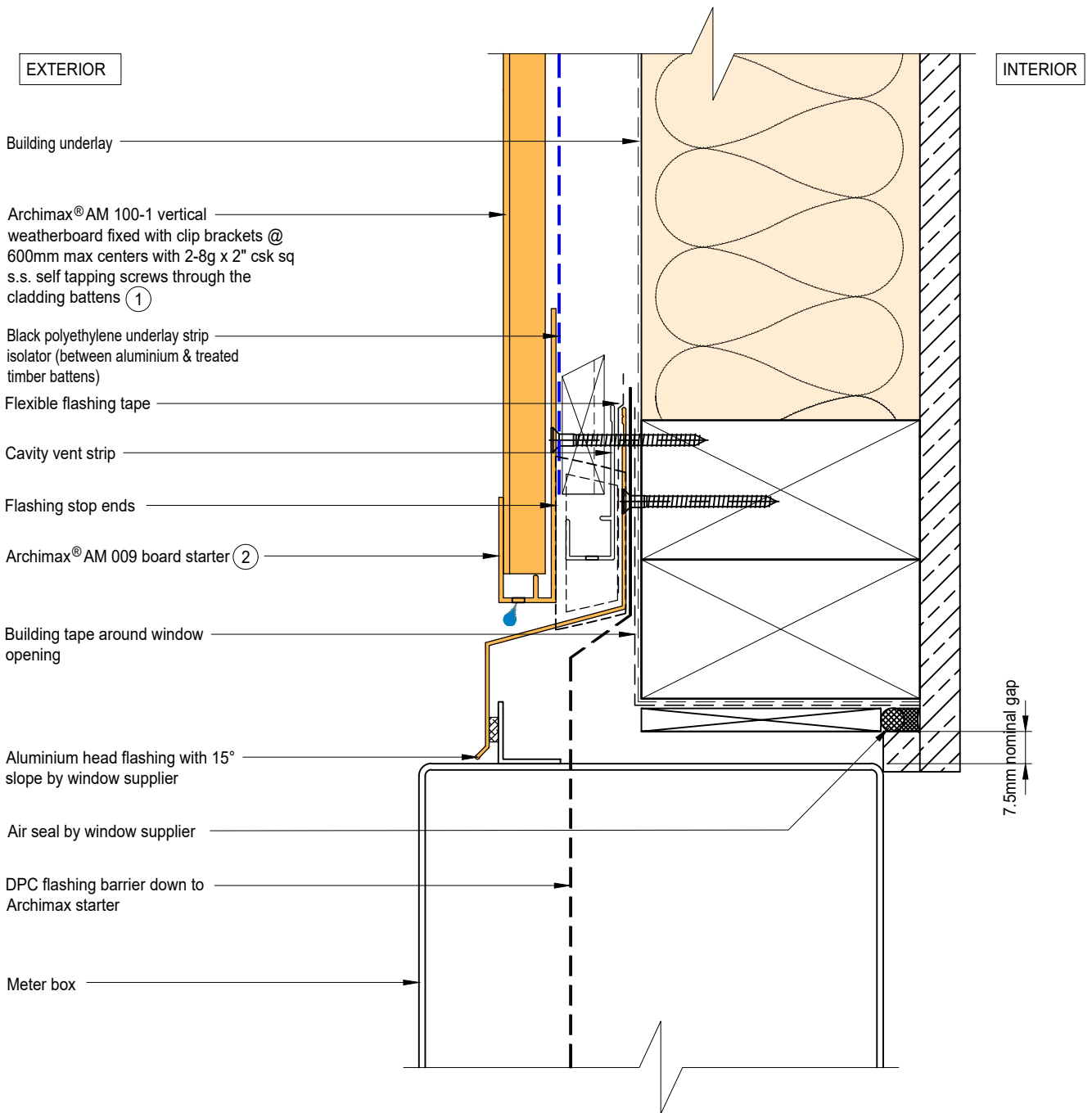
System
AM100-1-VERTICAL WEATHERBOARD

Detail
ARCHIMAX® LOWER ROOF WALL JUNCTION DETAIL

Drawing No. Rev.
AM-RW-V15 D


This drawing is the copyright of Archimax Limited. Modification of details for job specification requirements must be approved by Archimax Ltd. The building designer is ultimately responsible to ensure all building work is designed and constructed according to building code requirements, best code of practice industry guidelines. All components must be supplied by Archimax. Archimax reserves the right to alter or upgrade details at any time without prior notice.

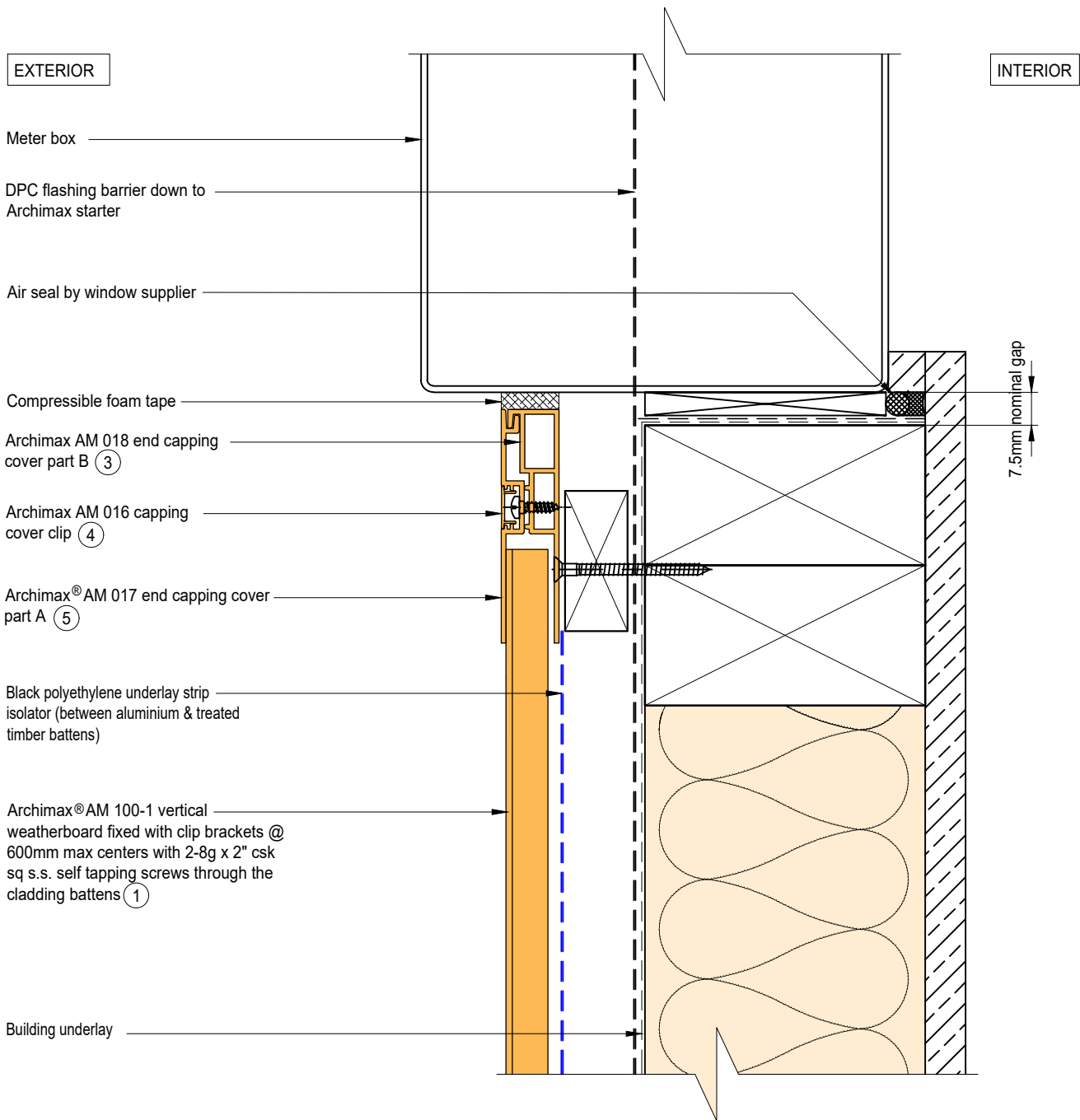
Scale Date
1:2 NOV23




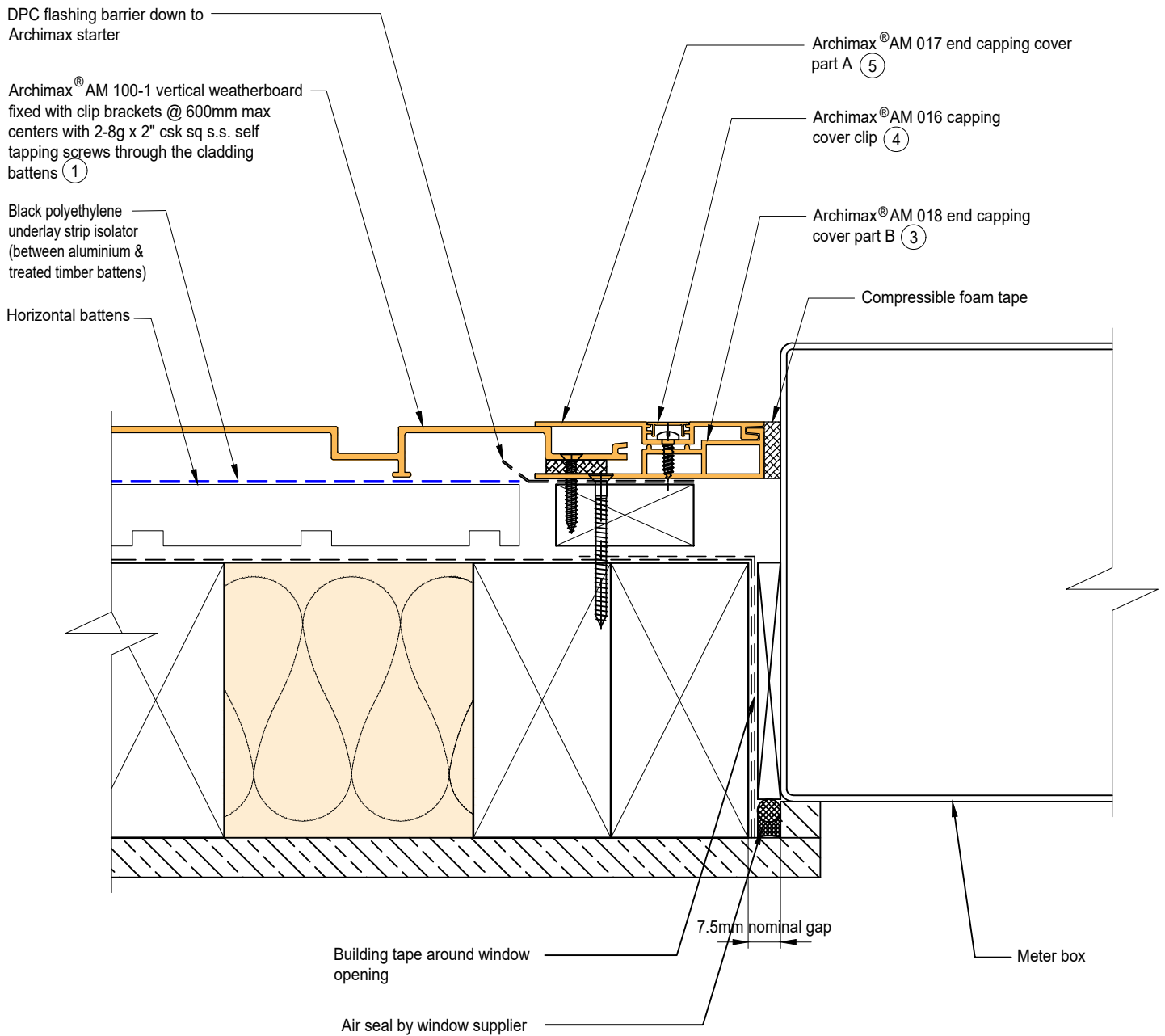
NOTE:
STOP ENDS TO BE INSTALLED AT FLASHING ENDS




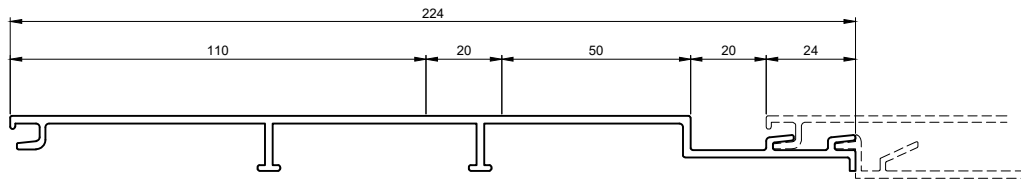
| | | | | | | |
|--|---|--|--|-------|------|-----|
|  <p>ARCHIMAX ALUMINIUM CLADDING SYSTEM <i>Creating more durable building envelopes</i> www.archimax.co.nz</p> | System AM100-1-VERTICAL WEATHERBOARD | Detail ARCHIMAX® METER BOX HEAD DETAIL | Drawing No. Rev. AM-MB-V16 D | | | |
| | <p>This drawing is the copyright of Archimax Limited. Modification of details for job specification requirements must be approved by Archimax Ltd. The building designer is ultimately responsible to ensure all building work is designed and constructed according to building code requirements, best code of practice industry guidelines. All components must be supplied by Archimax. Archimax reserves the right to alter or upgrade details at any time without prior notice.</p> | | <table border="1"> <tr> <td>Scale</td> <td>Date</td> </tr> <tr> <td>1:2</td> <td>NOV23</td> </tr> </table> | Scale | Date | 1:2 |
| Scale | Date | | | | | |
| 1:2 | NOV23 | | | | | |



| | | | | |
|---|-------------------------------|---------------------------------|-------------|-------|
|  <p>ARCHIMAX ALUMINIUM CLADDING SYSTEM <i>Creating more durable building envelopes</i> www.archimax.co.nz</p> | System | Detail | Drawing No. | Rev. |
| | AM100-1-VERTICAL WEATHERBOARD | ARCHIMAX® METER BOX SILL DETAIL | AM-MB-V17 | D |
| <small>This drawing is the copyright of Archimax Limited. Modification of details for job specification requirements must be approved by Archimax Ltd. The building designer is ultimately responsible to ensure all building work is designed and constructed according to building code requirements, best code of practice industry guidelines. All components must be supplied by Archimax. Archimax reserves the right to alter or upgrade details at any time without prior notice.</small> | | | Scale | Date |
| | | | 1:2 | NOV23 |



| | | | |
|--|---|---|---|
|  <p>ARCHIMAX ALUMINIUM CLADDING SYSTEM <i>Creating more durable building envelopes</i> www.archimax.co.nz</p> | <p>System AM100-1-VERTICAL WEATHERBOARD</p> | <p>Detail ARCHIMAX® METER BOX JAMB DETAIL</p> | <p>Drawing No. Rev. AM-MB-V18 D</p> |
| | <p>This drawing is the copyright of Archimax Limited. Modification of details for job specification requirements must be approved by Archimax Ltd. The building designer is ultimately responsible to ensure all building work is designed and constructed according to building code requirements, best code of practice industry guidelines. All components must be supplied by Archimax. Archimax reserves the right to alter or upgrade details at any time without prior notice.</p> | | <p>Scale Date 1:2 NOV23</p> |



①

AM 100-1 Archimax Horizontal / Vertical Weatherboard

| | | | | |
|--|---|---|--|-----------------------------------|
| <p>②</p> | <p>③</p> | <p>④</p> | <p>⑤</p> | <p>⑥</p> |
| <p>AM 009</p> <p>Board Starter</p> | <p>AM 018</p> <p>End Capping Part B</p> | <p>AM 016</p> <p>Jointer / Jamb / Sill Capping Cover Clip</p> | <p>AM 017</p> <p>End Capping Part A</p> | <p>AM 029</p> <p>Clip Bracket</p> |
| <p>⑨</p> | <p>⑧</p> | <p>⑨</p> | <p>⑪</p> | |
| <p>AM 019</p> <p>Internal/External Corner Part A</p> | <p>AM 023</p> <p>Internal Corner Cover Clip</p> | <p>AM 022</p> <p>Internal Corner Part B</p> | <p>AM 020</p> <p>External Cover Cover Clip</p> | |