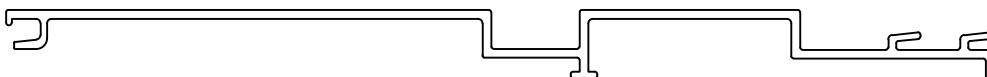


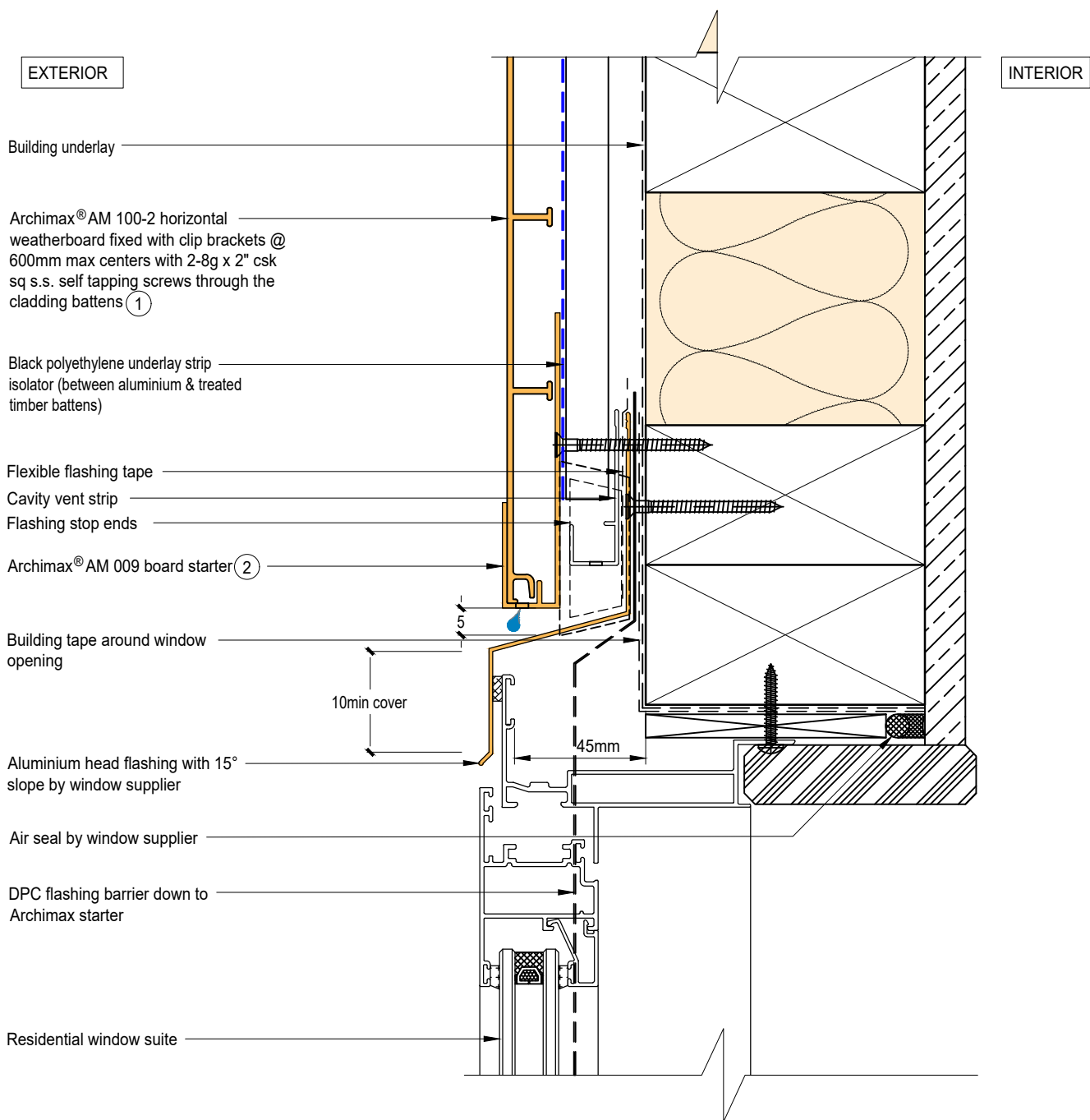


Archimax® Aluminium Cladding System
 AM100-2 Horizontal Profile - Installation Details

Drawing No.	Rev	Description
AM-WH-H1	D	Archimax® Window Head Detail
AM-WS-H2.1	D	Archimax® Window Sill Detail
AM-WS-H2.2	D	Archimax® Window Sill Detail
AM-WJ-H3	D	Archimax® Window Jamb Detail
AM-EXT-H4	D	Archimax® External Corner Detail
AM-INT-H5	D	Archimax® Internal Corner Detail
AM-CBS-H6.1	D	Archimax® Concrete Floor Board Starter Detail – Timber
AM-CBS-H6.2	D	Archimax® Concrete Floor Board Starter Detail –Fire Wall
AM-HJ-H7	D	Archimax® Horizontal Joint Detail
AM-DJ-H8	D	Archimax® Deck Junction Detail
AM-PP-H9A	D	Archimax® Pipe Penetration Plan View Detail
AM-PP-H9B	D	Archimax® Pipe Penetration Section View Detail
AM-SO-H10	D	Archimax® Soffit Detail
AM-SO-H11.1	D	Archimax® Fascia, Soffit & Wall Detail
AM-SO-H11.2	D	Archimax® Fascia, Soffit & Wall Detail (90° Soffit/Wall)
AM-SO-H11.3	D	Archimax® Fascia, Board Soffit & Wall Detail
AM-SO-H12	D	Archimax® Non-Soffit Detail
AM-BJ-H13	D	Archimax® Internal Corner Junction Detail
AM-PAR-H14	D	Archimax® Parapet with Cavity Detail
AM-RW-H15	D	Archimax® Lower Roof Wall Junction Detail
AM-MB-H16	D	Archimax® Meter Box Head Detail
AM-MB-H17	D	Archimax® Meter Box Sill Detail
AM-MB-H18	D	Archimax® Meter Box Jamb Detail
AM-MB-H19	D	Archimax® Vertical Joint Detail




AM100-2
 Coverage: 200mm

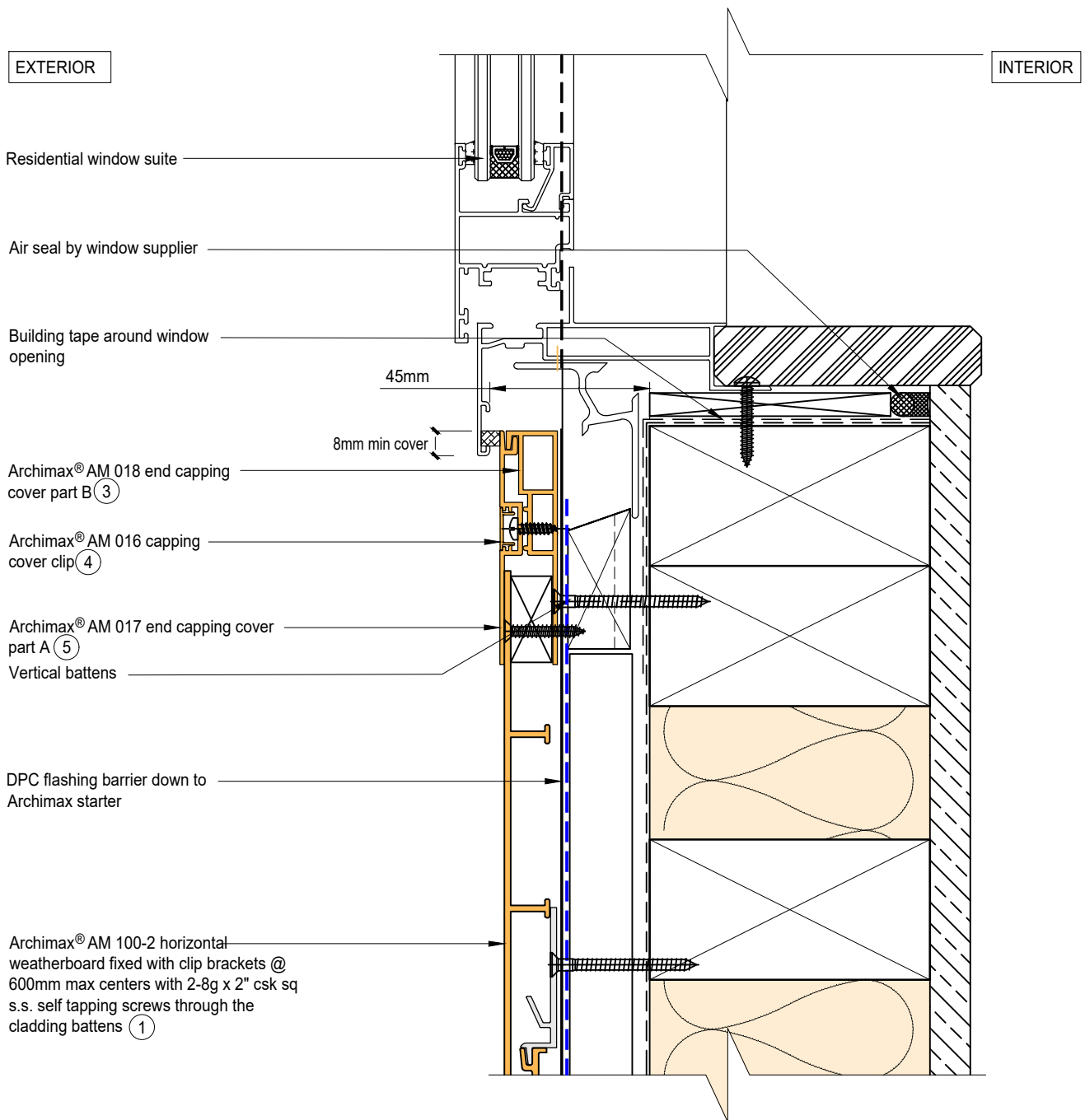


NOTE:

1. Stop ends to be installed at flashing ends
2. Minimum clearance between the AIR BARRIER and the WINDOW JOINERY to be 45mm. Window joinery should not be permanently fixed until cladding been installed.




 <p>ARCHIMAX ALUMINIUM CLADDING SYSTEM <i>Creating more durable building envelopes</i> www.archimax.co.nz</p>	<p>System AM 100-2 - HORIZONTAL WEATHERBOARD</p>	<p>Detail ARCHIMAX® WINDOW HEAD DETAIL</p>	<p>Drawing No. Rev. AM-WH-H1 D</p>
	<p>This drawing is the copyright of Archimax Limited. Modification of details for job specification requirements must be approved by Archimax Ltd. The building designer is ultimately responsible to ensure all building work is designed and constructed according to building code requirements, best code of practice industry guidelines. All components must be supplied by Archimax. Archimax reserves the right to alter or upgrade details at any time without prior notice.</p>		<p>Scale Date 1:2 NOV23</p>

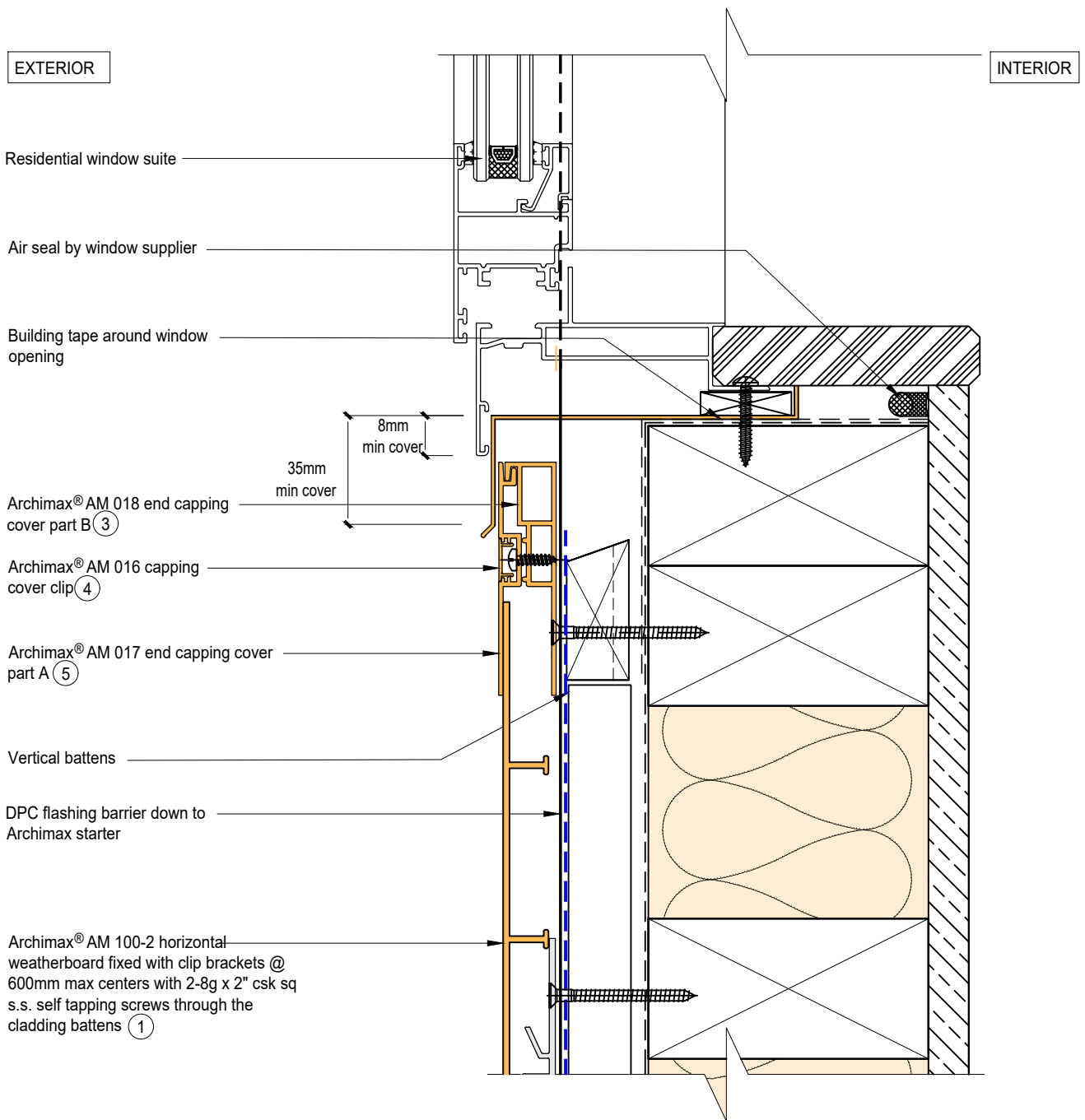


NOTE:

1. Minimum clearance between the AIR BARRIER and the WINDOW JOINERY to be 45mm. Window joinery should not be permanently fixed until cladding been installed.



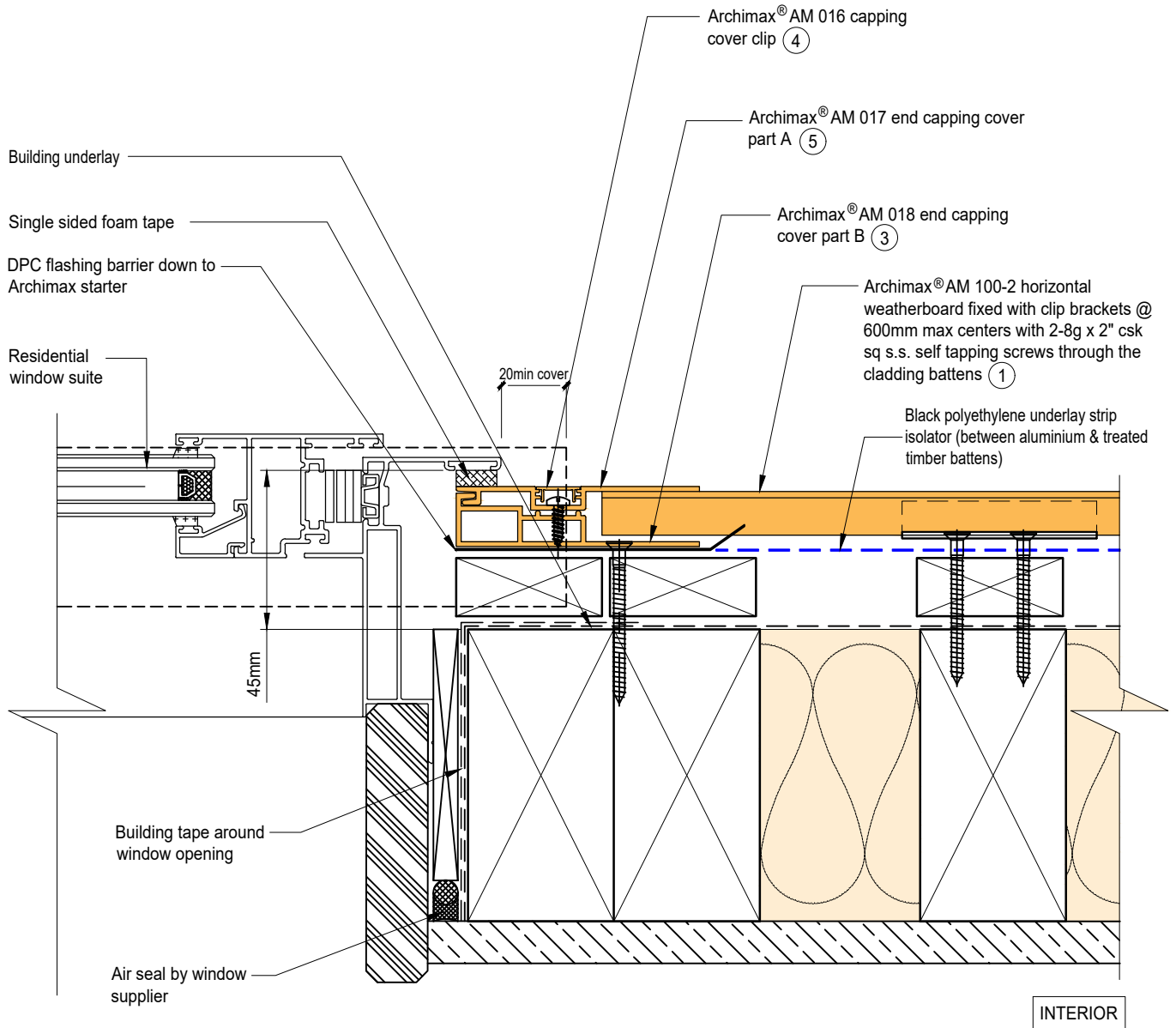
 <p>ARCHIMAX ALUMINIUM CLADDING SYSTEM <i>Creating more durable building envelopes</i> www.archimax.co.nz</p>	<p>System AM 100-2 - HORIZONTAL WEATHERBOARD</p>	<p>Detail ARCHIMAX® WINDOW SILL DETAIL</p>	<p>Drawing No. Rev. AM-WS-H2.1 D</p>
	<p>This drawing is the copyright of Archimax Limited. Modification of details for job specification requirements must be approved by Archimax Ltd. The building designer is ultimately responsible to ensure all building work is designed and constructed according to building code requirements, best code of practice industry guidelines. All components must be supplied by Archimax. Archimax reserves the right to alter or upgrade details at any time without prior notice.</p>		<p>Scale Date 1:2 NOV23</p>



ARCHIMAX
ALUMINIUM CLADDING SYSTEM
Creating more durable building envelopes
www.archimax.co.nz

System AM 100-2 - HORIZONTAL WEATHERBOARD	Detail ARCHIMAX® WINDOW SILL DETAIL	Drawing No. Rev. AM-WS-H2.2 D
This drawing is the copyright of Archimax Limited. Modification of details for job specification requirements must be approved by Archimax Ltd. The building designer is ultimately responsible to ensure all building work is designed and constructed according to building code requirements, best code of practice industry guidelines. All components must be supplied by Archimax. Archimax reserves the right to alter or upgrade details at any time without prior notice.		Scale Date 1:2 NOV23

EXTERIOR




INTERIOR

NOTE:

1. Minimum clearance between the AIR BARRIER and the WINDOW JOINERY to be 45mm. Window joinery should not be permanently fixed until cladding been installed.



 <p>ARCHIMAX ALUMINIUM CLADDING SYSTEM Creating more durable building envelopes www.archimax.co.nz</p>	<p>System AM 100-2 - HORIZONTAL WEATHERBOARD</p>	<p>Detail ARCHIMAX® WINDOW JAMB DETAIL</p>	<p>Drawing No. Rev. AM-WJ-H3 D</p>
	<p>This drawing is the copyright of Archimax Limited. Modification of details for job specification requirements must be approved by Archimax Ltd. The building designer is ultimately responsible to ensure all building work is designed and constructed according to building code requirements, best code of practice industry guidelines. All components must be supplied by Archimax. Archimax reserves the right to alter or upgrade details at any time without prior notice.</p>		<p>Scale Date 1:2 NOV23</p>

EXTERIOR

INTERIOR

Building Underlay

Archimax® AM 100-2 horizontal weatherboard fixed with clip brackets @ 600mm max centers with 2-8g x 2" csk sq s.s. self tapping screws through the cladding battens ①

Black polyethylene underlay strip isolator (between aluminium & treated timber battens)

Vertical battens

Archimax® clip bracket AM 029

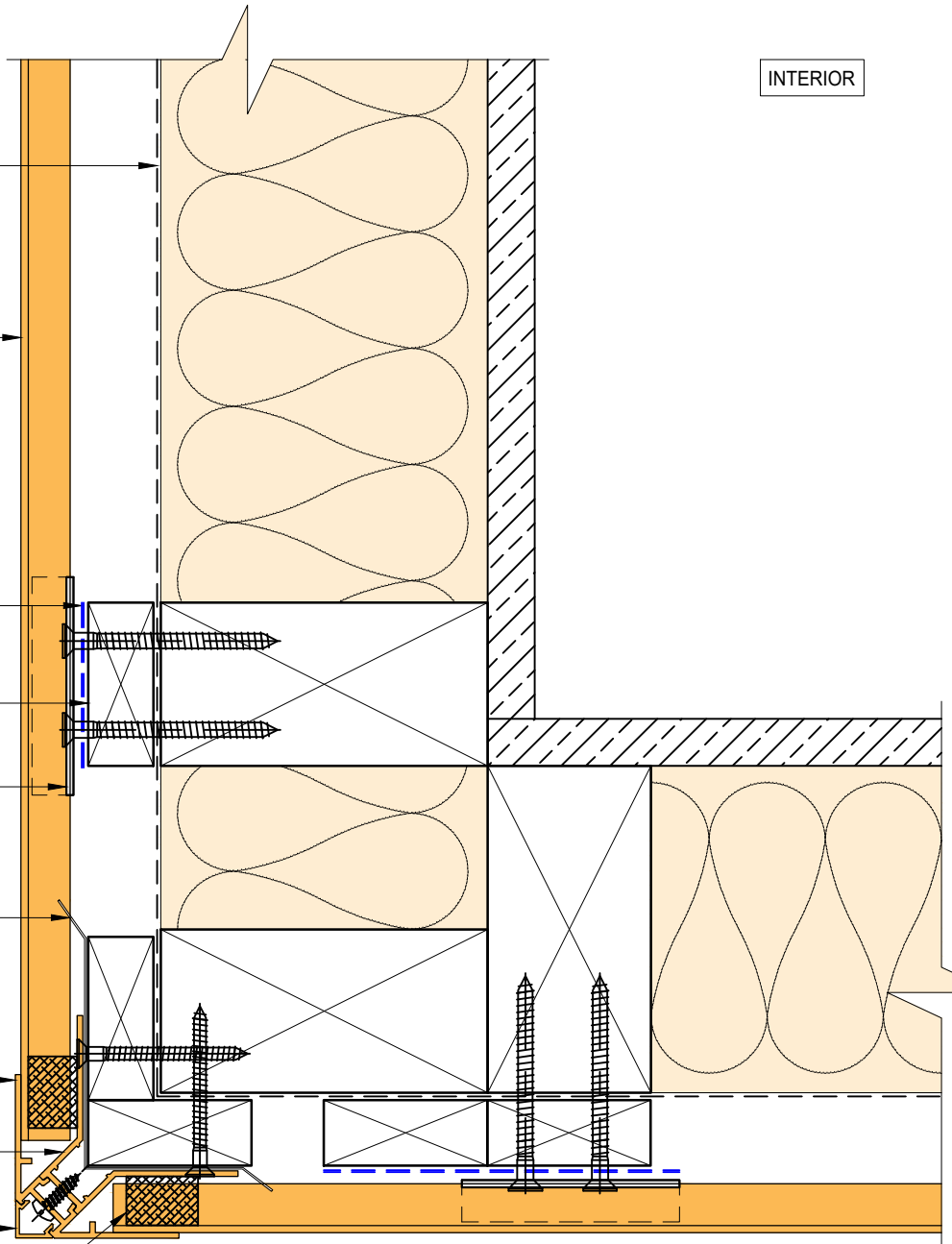
DPC flashing barrier down to Archimax starter

Archimax AM 019 internal/external corner part A ⑦

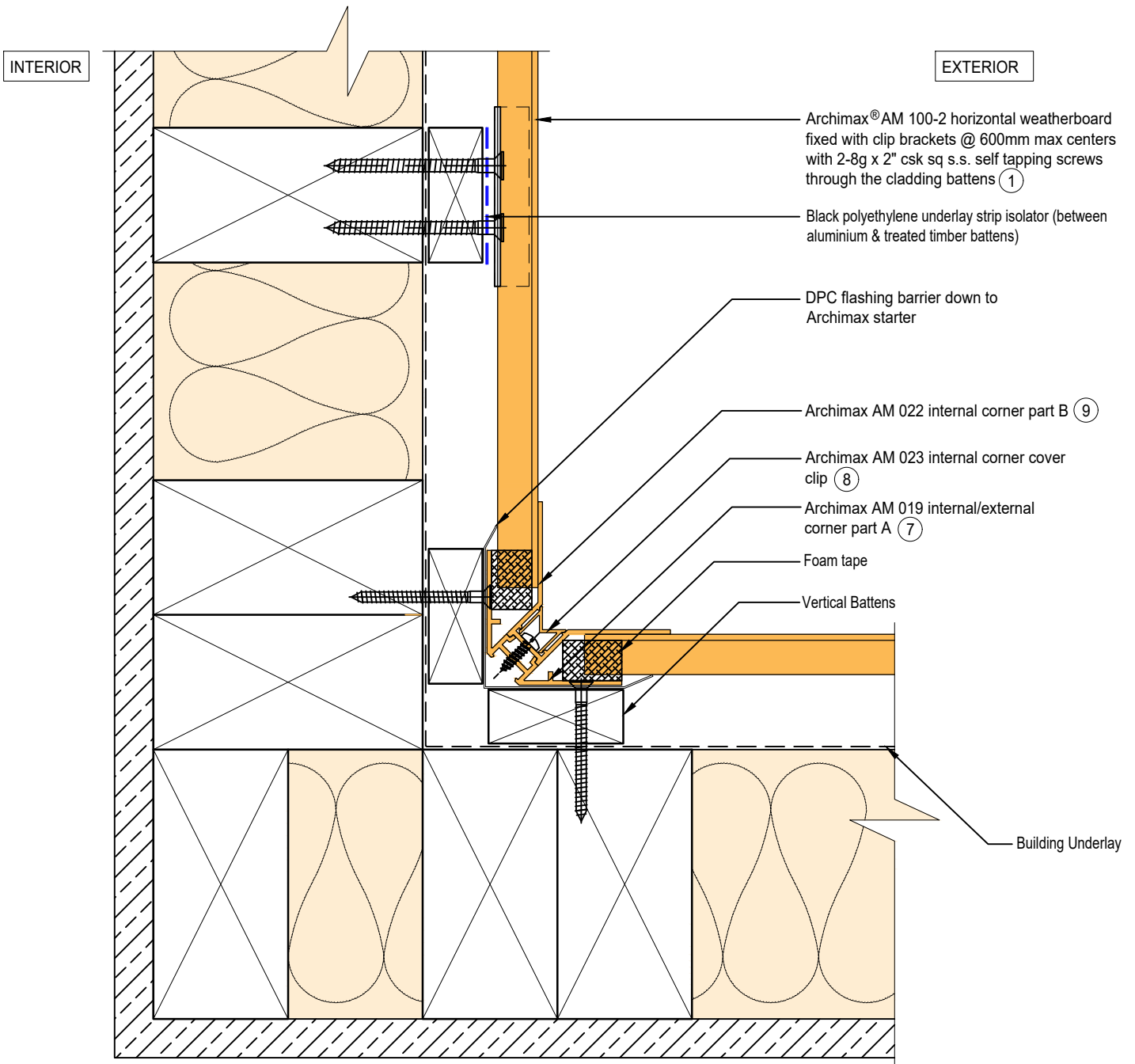
Archimax AM 022 internal corner part B ⑨


Archimax AM 020 external corner cover clip ⑪

Foam Tape



BRANZ Appraised
Appraisal No. 1173 [2021]



 <p>ARCHIMAX ALUMINIUM CLADDING SYSTEM <i>Creating more durable building envelopes</i> www.archimax.co.nz</p>	<p>System AM 100-2 - HORIZONTAL WEATHERBOARD</p>	<p>Detail ARCHIMAX® INTERNAL CORNER DETAIL</p>	<p>Drawing No. Rev. AM-INT-H5 D</p>
	<p>This drawing is the copyright of Archimax Limited. Modification of details for job specification requirements must be approved by Archimax Ltd. The building designer is ultimately responsible to ensure all building work is designed and constructed according to building code requirements, best code of practice industry guidelines. All components must be supplied by Archimax. Archimax reserves the right to alter or upgrade details at any time without prior notice.</p>		<p>Scale Date 1:2 NOV23</p>

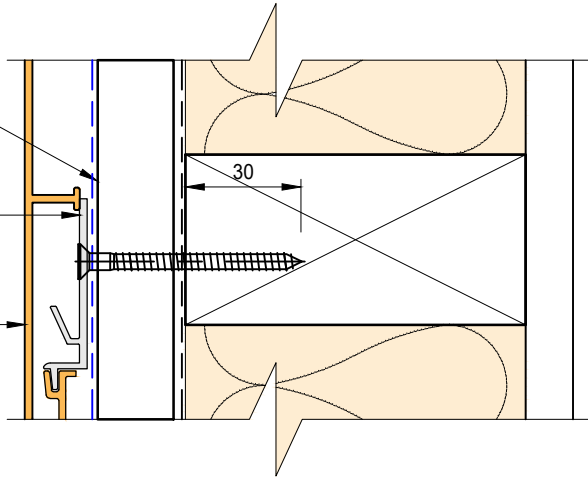
EXTERIOR

INTERIOR

Castellated timber batten (Vertical)

Archimax® clip bracket AM 029

① Archimax® AM 100-2 horizontal weatherboard fixed with clip brackets @ 600mm max centers with 2-8g x 2" csk sq s.s. self tapping screws through the cladding battens



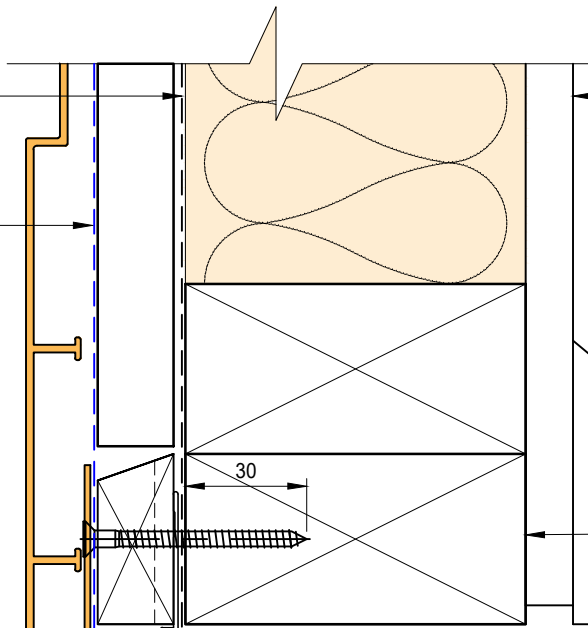
Building underlay

Black polyethylene underlay strip isolator (between aluminium & treated timber battens)

Interior lining

Cavity vent strip (By others)

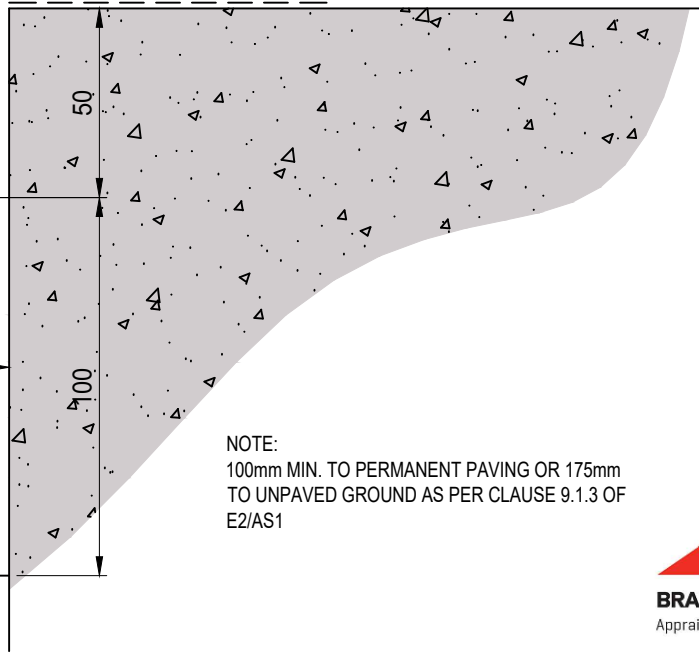
② Archimax® AM 009 board starter



Bottom plate over DPC

Concrete slab or brickwork (By others)

Finish ground level



NOTE:
100mm MIN. TO PERMANENT PAVING OR 175mm TO UNPAVED GROUND AS PER CLAUSE 9.1.3 OF E2/AS1



BRANZ Appraised
Appraisal No. 1173 [2021]



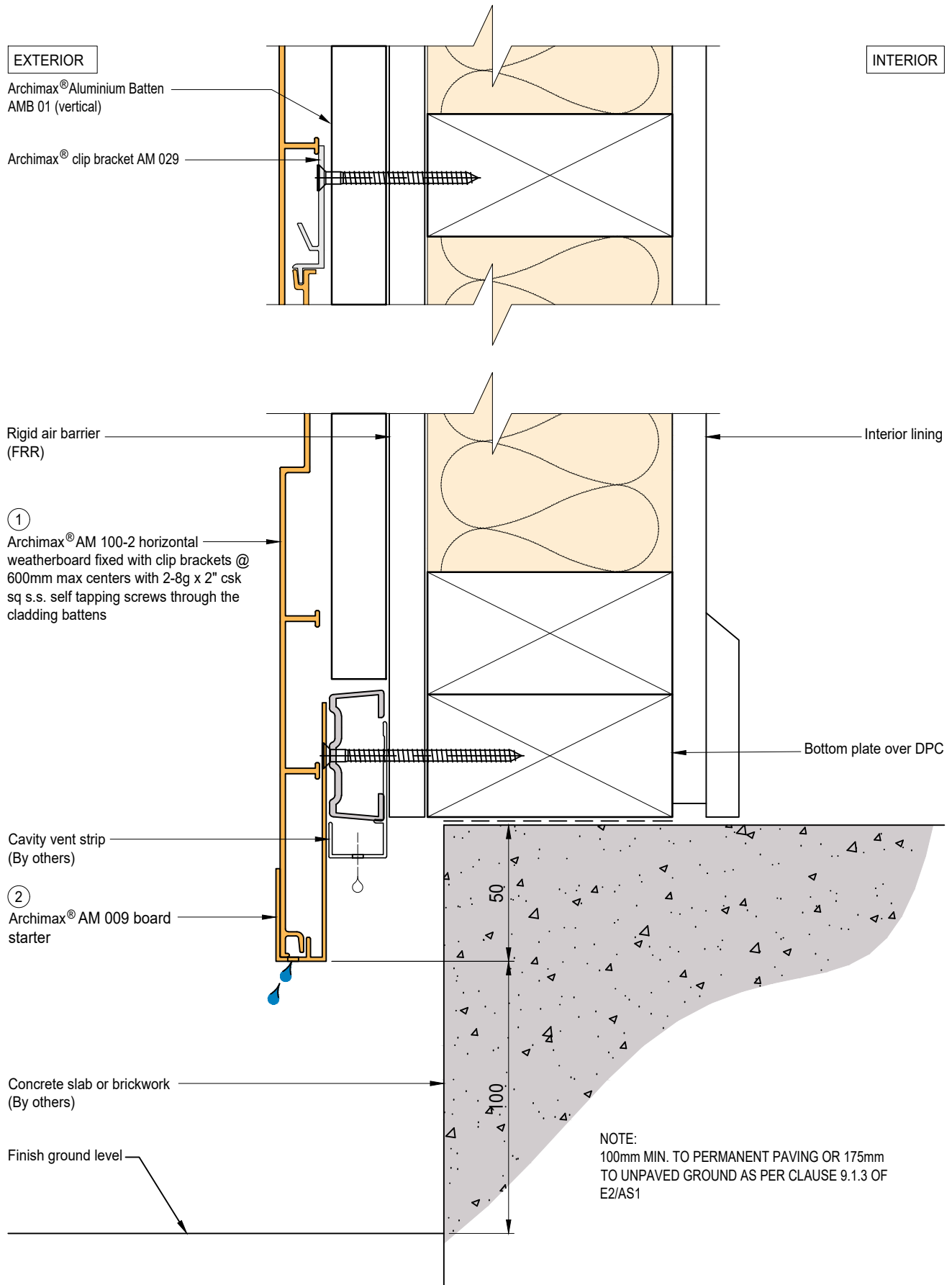
System
AM 100-2 - HORIZONTAL WEATHERBOARD

Detail
ARCHIMAX® CONCRETE FLOOR BOARD STARTER DETAIL - TIMBER

Drawing No. Rev.
AM-CBS-H6.1 D

This drawing is the copyright of Archimax Limited. Modification of details for job specification requirements must be approved by Archimax Ltd. The building designer is ultimately responsible to ensure all building work is designed and constructed according to building code requirements, best code of practice industry guidelines. All components must be supplied by Archimax. Archimax reserves the right to alter or upgrade details at any time without prior notice.

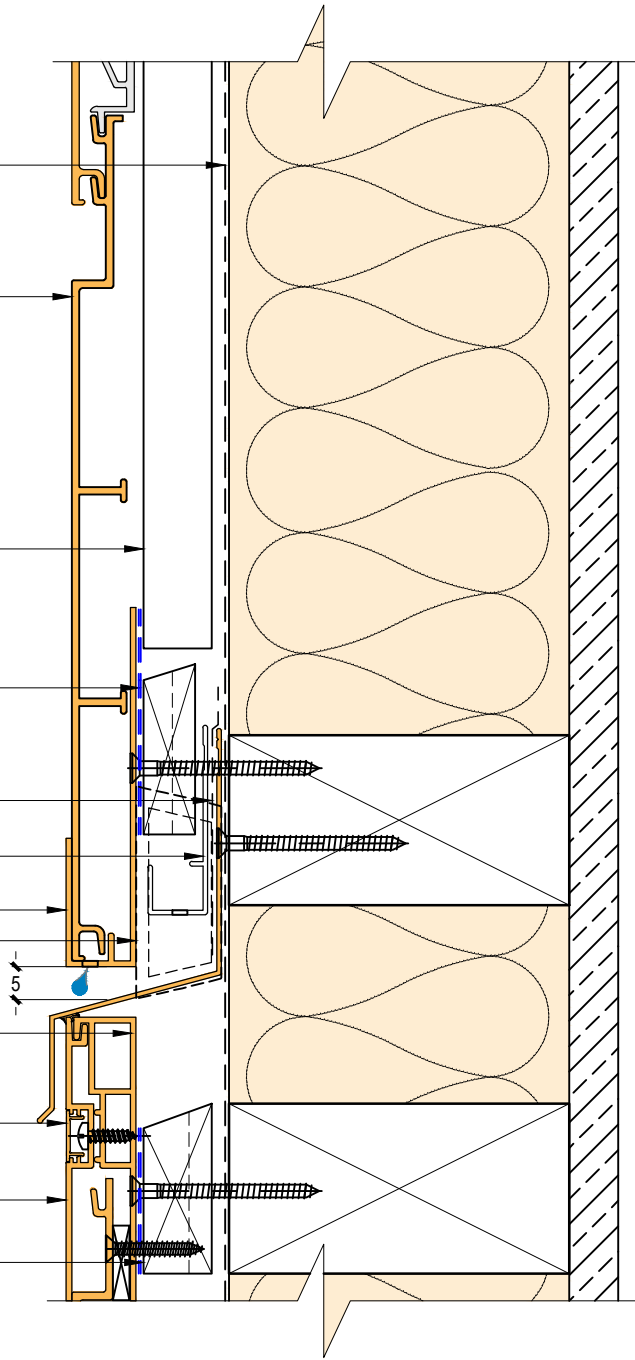
Scale Date
1:2 NOV23



EXTERIOR

INTERIOR

- Building underlay
- Archimax® AM 100-2 horizontal weatherboard fixed with clip brackets @ 600mm max centers with 2-8g x 2" csk sq s.s. self tapping screws through the cladding battens ①
- Vertical battens
- Black polyethylene underlay strip isolator (between aluminium & treated timber battens)
- Flexible flashing tape
- Cavity vent strip
- Archimax AM 009 board starter ②
- Inter-Storey flashing stop ends
- Archimax® AM 018 end capping cover part B ③
- Archimax® AM 016 capping cover clip ④
- Archimax® AM 017 end capping cover part A ⑤
- Horizontal battens

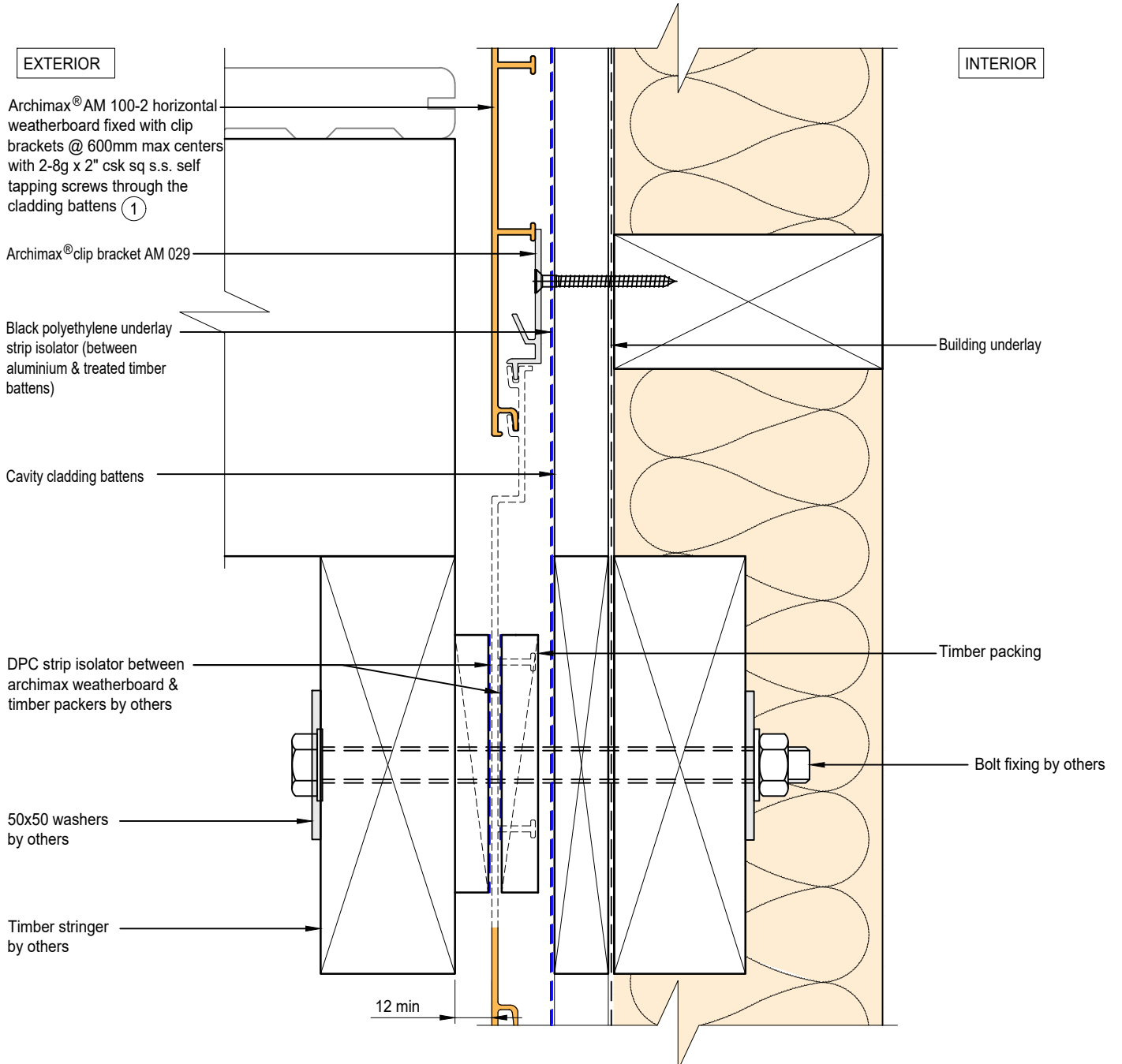


NOTE:
STOP ENDS TO BE INSTALLED AT INTER-STOREY FLASHING ENDS



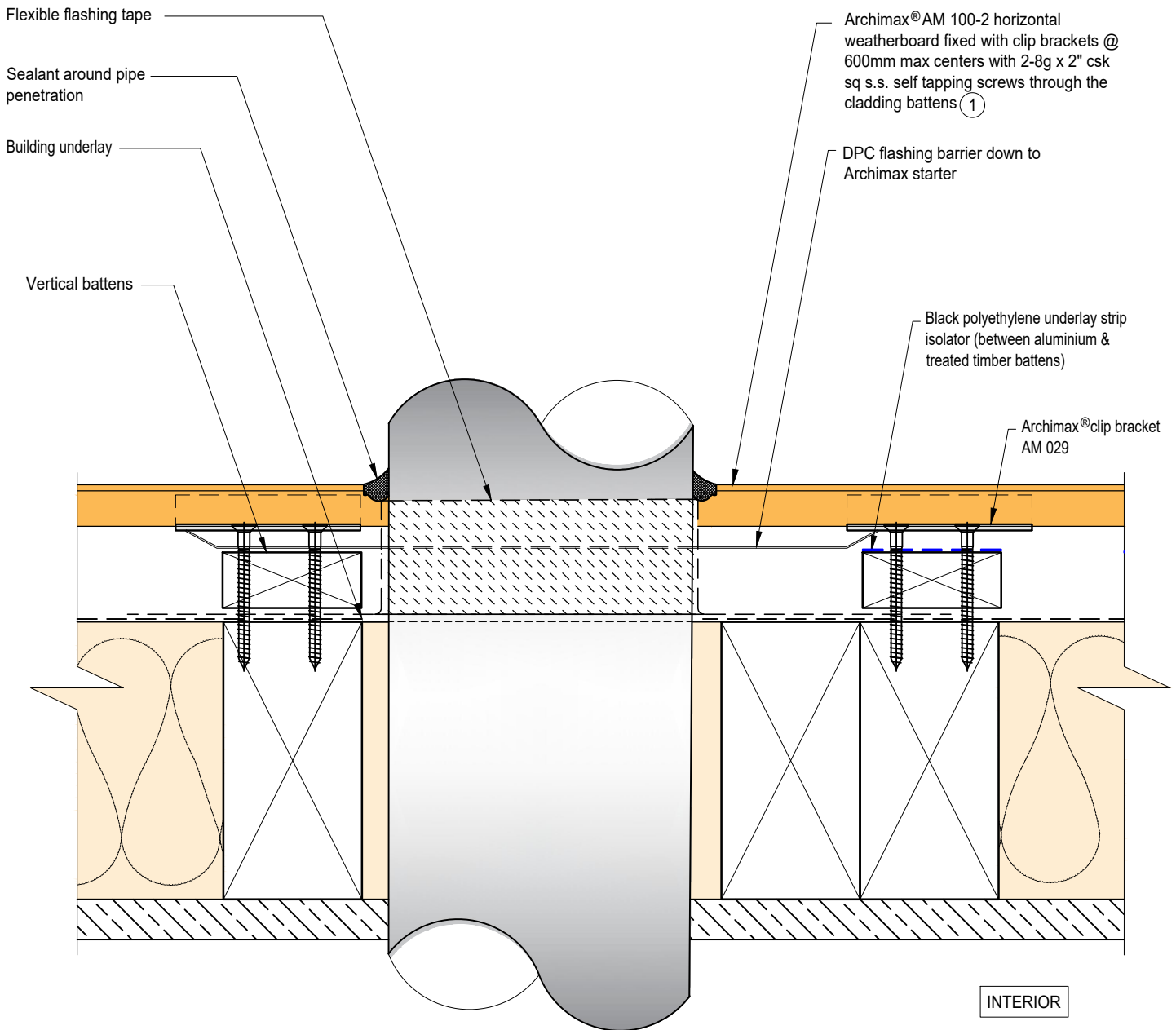
ARCHIMAX
ALUMINIUM CLADDING SYSTEM
Creating more durable building envelopes
www.archimax.co.nz

System AM 100-2 - HORIZONTAL WEATHERBOARD	Detail ARCHIMAX® HORIZONTAL JOINT DETAIL	Drawing No. Rev. AM-HJ-H7 D
This drawing is the copyright of Archimax Limited. Modification of details for job specification requirements must be approved by Archimax Ltd. The building designer is ultimately responsible to ensure all building work is designed and constructed according to building code requirements, best code of practice industry guidelines. All components must be supplied by Archimax. Archimax reserves the right to alter or upgrade details at any time without prior notice.		Scale Date 1:2 NOV23



System AM 100-2 - HORIZONTAL WEATHERBOARD	Detail ARCHIMAX® DECK JUNCTION DETAIL	Drawing No. AM-DJ-H8	Rev. D
This drawing is the copyright of Archimax Limited. Modification of details for job specification requirements must be approved by Archimax Ltd. The building designer is ultimately responsible to ensure all building work is designed and constructed according to building code requirements, best code of practice industry guidelines. All components must be supplied by Archimax. Archimax reserves the right to alter or upgrade details at any time without prior notice.		Scale 1:2	Date NOV23

EXTERIOR



INTERIOR

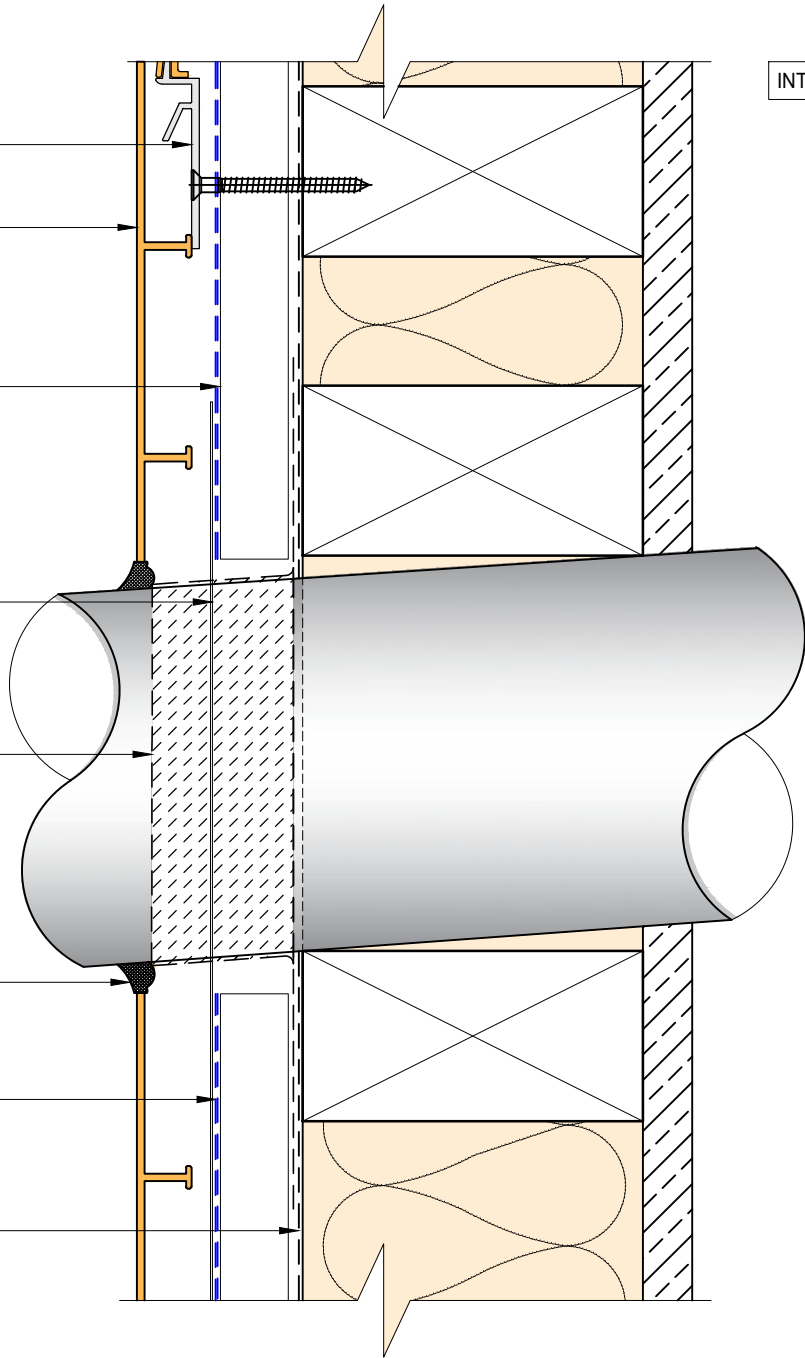


BRANZ Appraised
Appraisal No. 1173 [2021]

EXTERIOR

INTERIOR

- Archimax® clip bracket AM 029
- Archimax® AM 100-2 horizontal weatherboard fixed with clip brackets @ 600mm max centers with 2-8g x 2" csk sq s.s. self tapping screws through the cladding battens ①
- Vertical battens
- DPC flashing barrier down to Archimax starter
- Flexible flashing tape
- Sealant around pipe penetration
- Black polyethylene underlay strip isolator (between aluminium & treated timber battens)
- Building underlay



ARCHIMAX
ALUMINIUM CLADDING SYSTEM
Creating more durable building envelopes
www.archimax.co.nz

System AM 100-2 - HORIZONTAL WEATHERBOARD	Detail ARCHIMAX® PIPE PENETRATION - SECTION VIEW DETAIL	Drawing No. Rev. AM-PP-H9b D
This drawing is the copyright of Archimax Limited. Modification of details for job specification requirements must be approved by Archimax Ltd. The building designer is ultimately responsible to ensure all building work is designed and constructed according to building code requirements, best code of practice industry guidelines. All components must be supplied by Archimax. Archimax reserves the right to alter or upgrade details at any time without prior notice.		Scale Date 1:2 NOV23

EXTERIOR

INTERIOR

Compressible foam tape

Archimax® AM 018 end capping cover part B (3)

Archimax® AM 016 capping cover clip (4)

Archimax® AM 017 end capping cover part A (5)

Solid packer

Horizontal battens

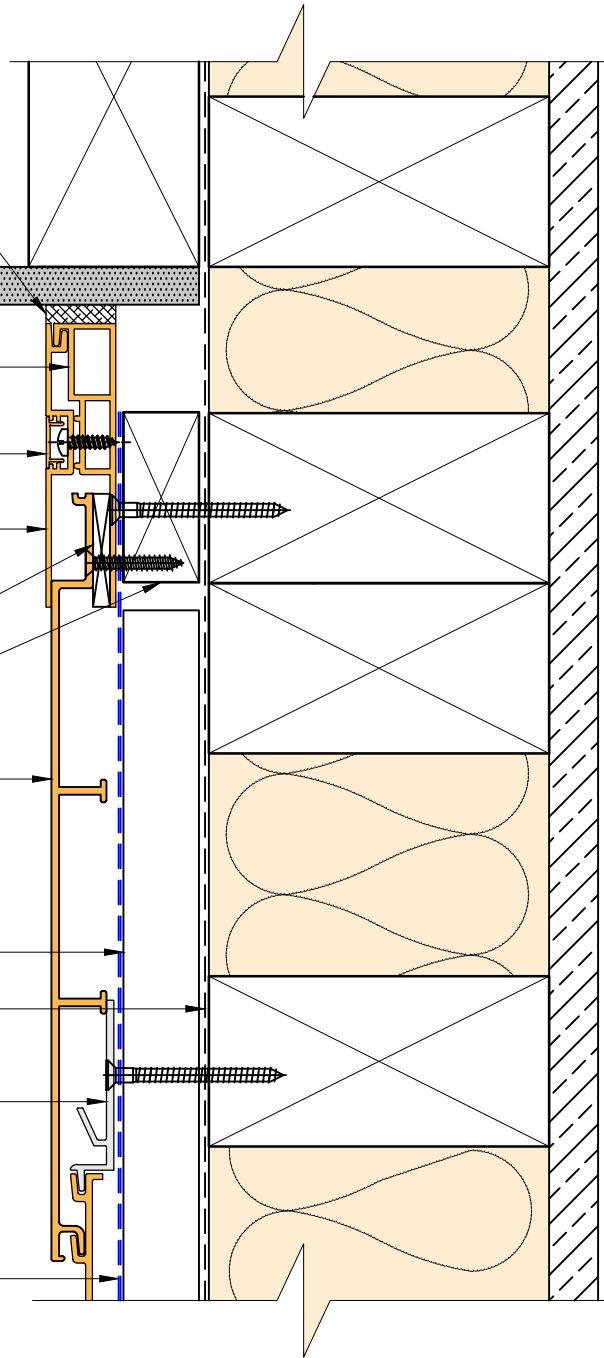
Archimax® AM 100-2 horizontal weatherboard fixed with clip brackets @ 600mm max centers with 2-8g x 2" csk sq s.s. self tapping screws through the cladding battens (1)

Vertical battens

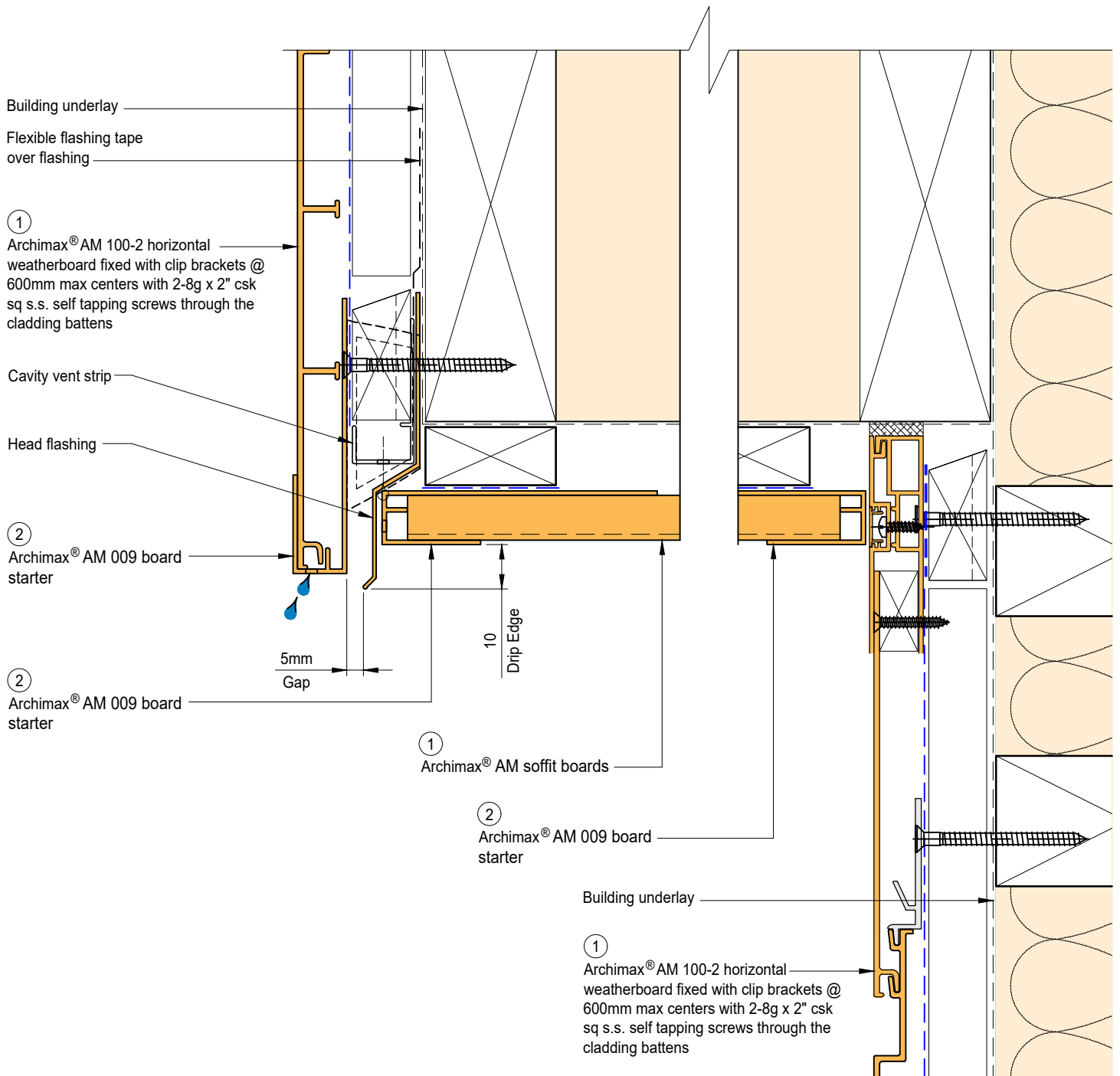
Building underlay

Archimax® clip bracket AM 029

Black polyethylene underlay strip isolator (between aluminium & treated timber battens)




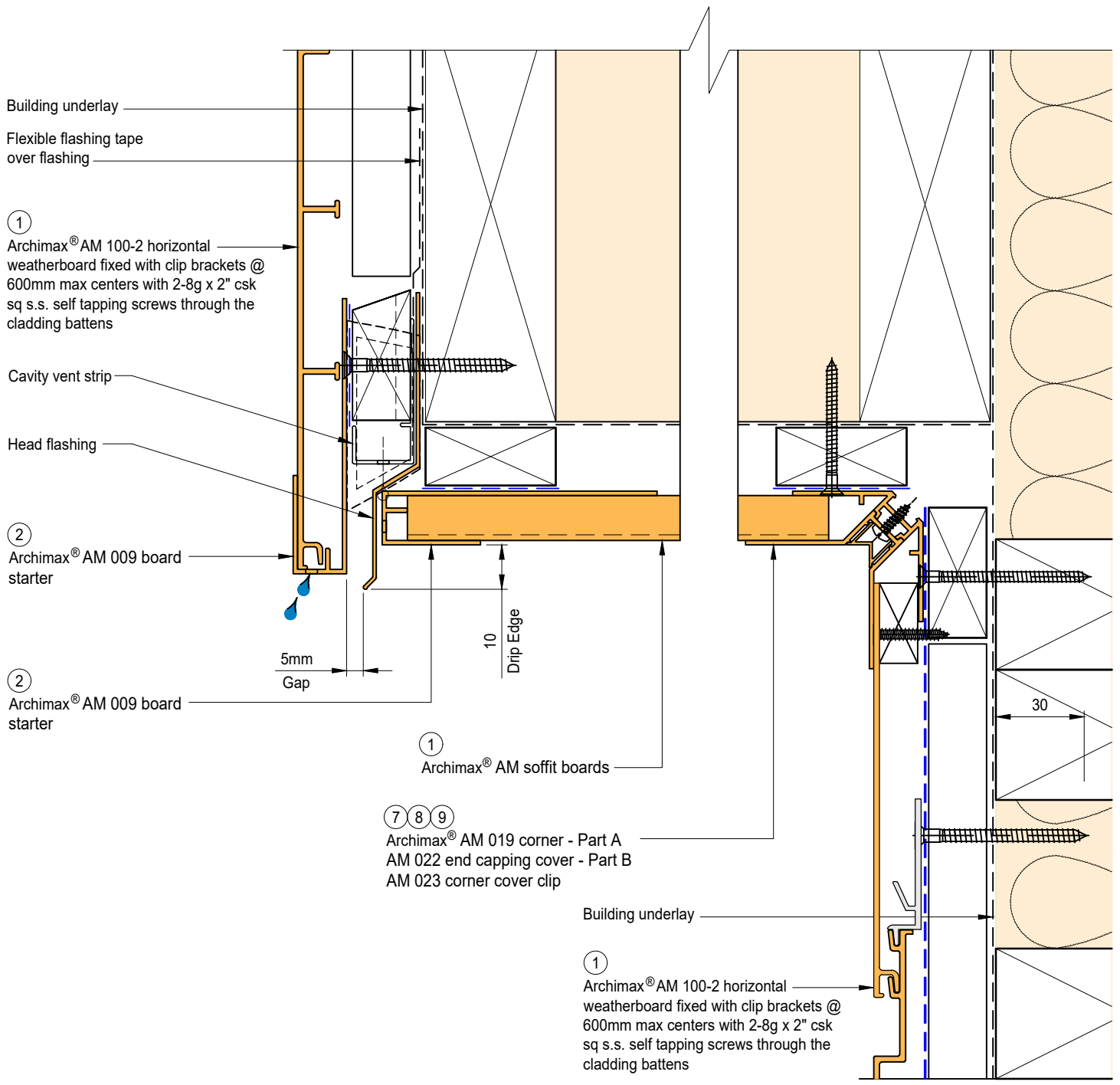
BRANZ Appraised
Appraisal No. 1173 [2021]



NOTE:
STOP ENDS TO BE INSTALLED AT FLASHING ENDS




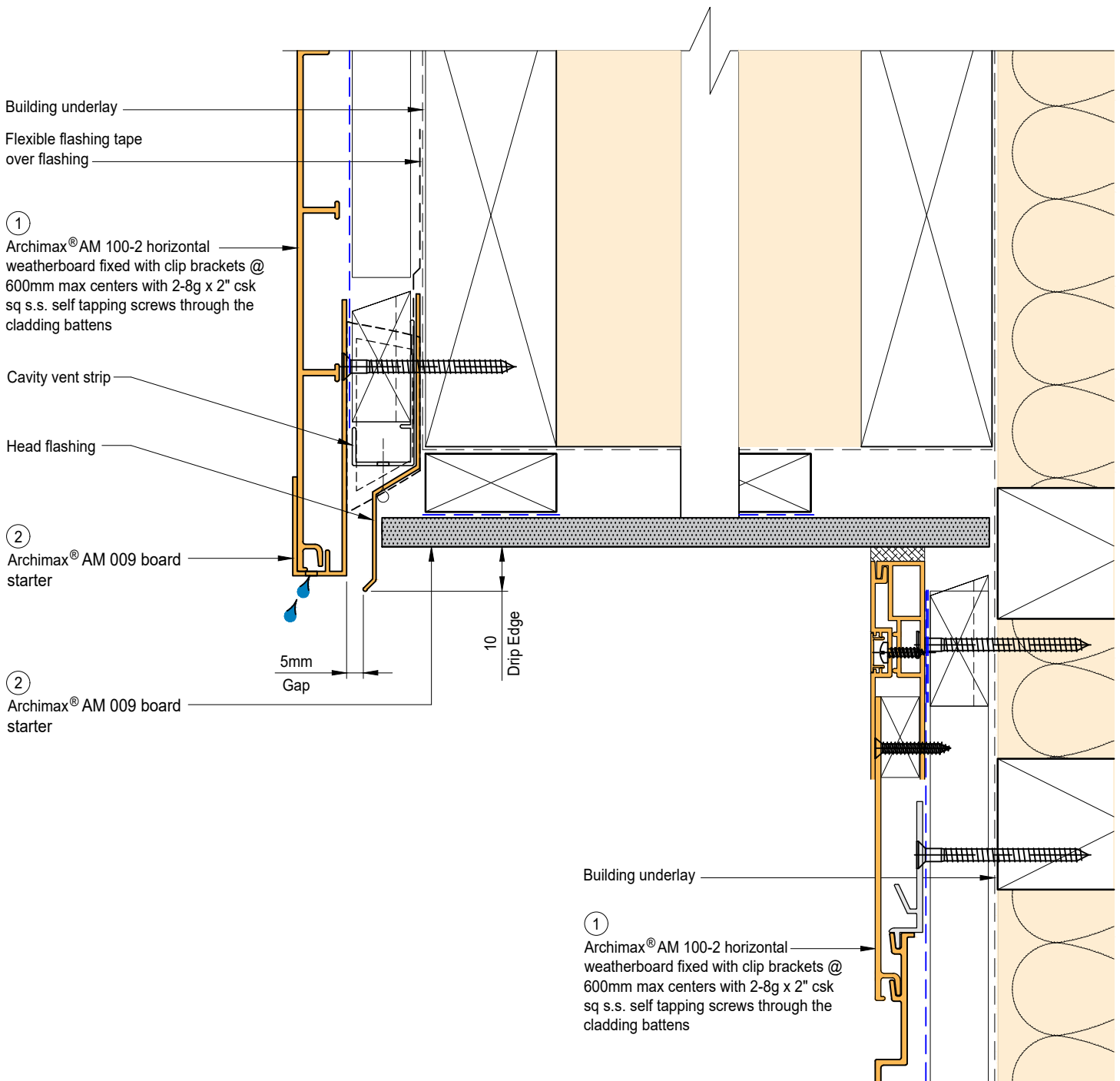
 <p>ARCHIMAX ALUMINIUM CLADDING SYSTEM <i>Creating more durable building envelopes</i> www.archimax.co.nz</p>	<p>System AM 100-2 - HORIZONTAL WEATHERBOARD</p>	<p>Detail ARCHIMAX® FASCIA, SOFFIT & WALL DETAIL</p>	<p>Drawing No. Rev. AM-SO-H11.1 D</p>	
	<p>This drawing is the copyright of Archimax Limited. Modification of details for job specification requirements must be approved by Archimax Ltd. The building designer is ultimately responsible to ensure all building work is designed and constructed according to building code requirements, best code of practice industry guidelines. All components must be supplied by Archimax. Archimax reserves the right to alter or upgrade details at any time without prior notice.</p>		<p>Scale 1:2</p>	<p>Date NOV23</p>



NOTE:
STOP ENDS TO BE INSTALLED AT FLASHING ENDS




 <p>ARCHIMAX ALUMINIUM CLADDING SYSTEM <i>Creating more durable building envelopes</i> www.archimax.co.nz</p>	<p>System AM 100-2 - HORIZONTAL WEATHERBOARD</p>	<p>Detail ARCHIMAX® FASCIA, SOFFIT & WALL DETAIL (90° SOFFIT / WALL) DETAIL</p>	<p>Drawing No. Rev. AM-SO-H11.2 D</p>
	<p>This drawing is the copyright of Archimax Limited. Modification of details for job specification requirements must be approved by Archimax Ltd. The building designer is ultimately responsible to ensure all building work is designed and constructed according to building code requirements, best code of practice industry guidelines. All components must be supplied by Archimax. Archimax reserves the right to alter or upgrade details at any time without prior notice.</p>		<p>Scale Date 1:2 NOV23</p>



NOTE:
STOP ENDS TO BE INSTALLED AT FLASHING ENDS



 <p>ARCHIMAX ALUMINIUM CLADDING SYSTEM <i>Creating more durable building envelopes</i> www.archimax.co.nz</p>	<p>System AM 100-2 - HORIZONTAL WEATHERBOARD</p>	<p>Detail ARCHIMAX® FASCIA, BOARD SOFFIT & WALL DETAIL</p>	<p>Drawing No. Rev. AM-SO-H11.3 D</p>	
	<p>This drawing is the copyright of Archimax Limited. Modification of details for job specification requirements must be approved by Archimax Ltd. The building designer is ultimately responsible to ensure all building work is designed and constructed according to building code requirements, best code of practice industry guidelines. All components must be supplied by Archimax. Archimax reserves the right to alter or upgrade details at any time without prior notice.</p>		<p>Scale 1:2</p>	<p>Date NOV23</p>

EXTERIOR

Selected roofing

Flashing & sealed by others

Archimax® AM 018 end capping cover part B (3)

Archimax® AM 016 capping cover clip (4)

Archimax® AM 017 end capping cover part A (5)

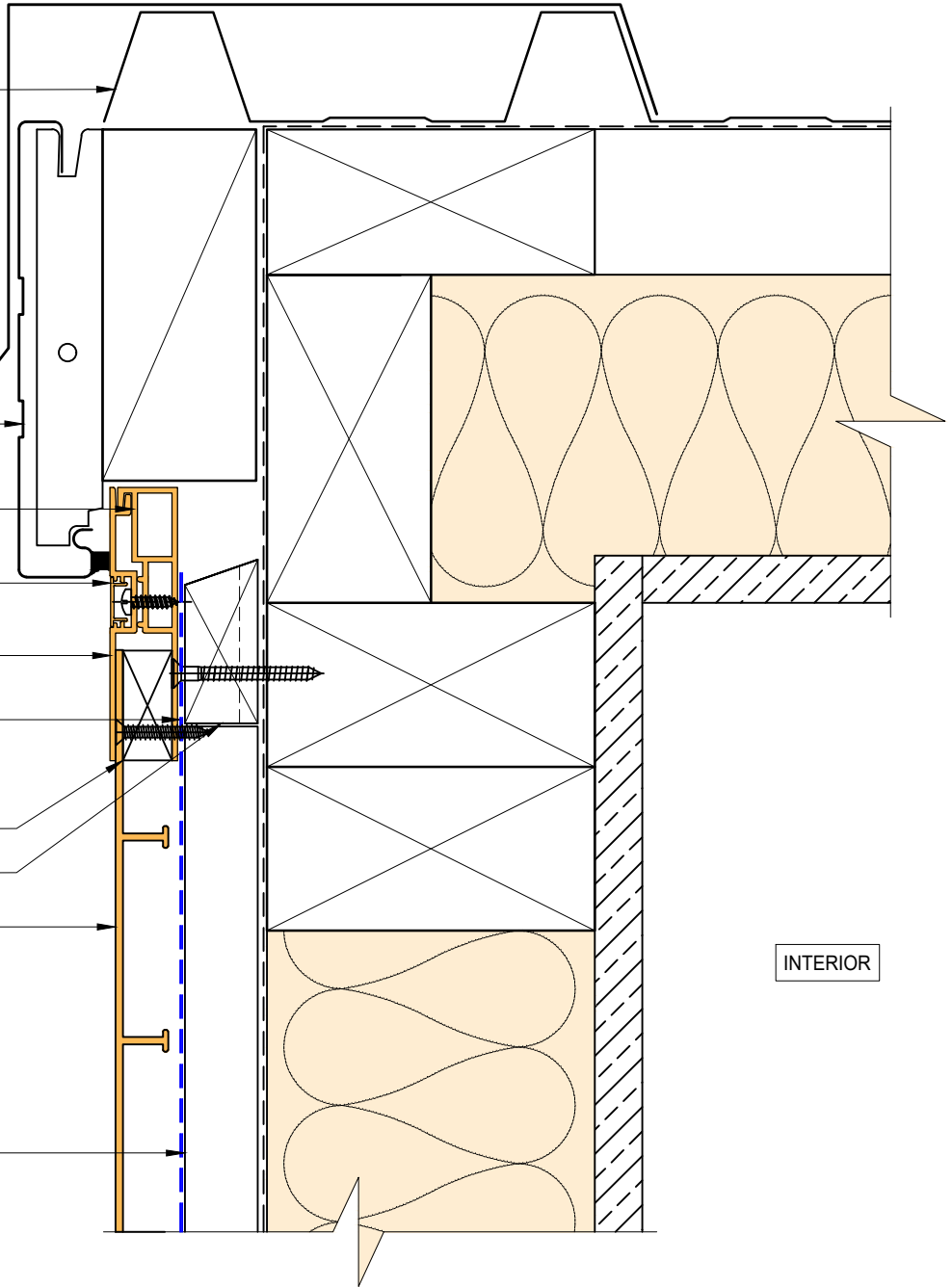
Black polyethylene underlay strip isolator (between aluminium & treated timber battens)

Solid packer

Horizontal battens

Archimax® AM 100-2 horizontal weatherboard fixed with clip brackets @ 600mm max centers with 2-8g x 2" csk sq s.s. self tapping screws through the cladding battens (1)

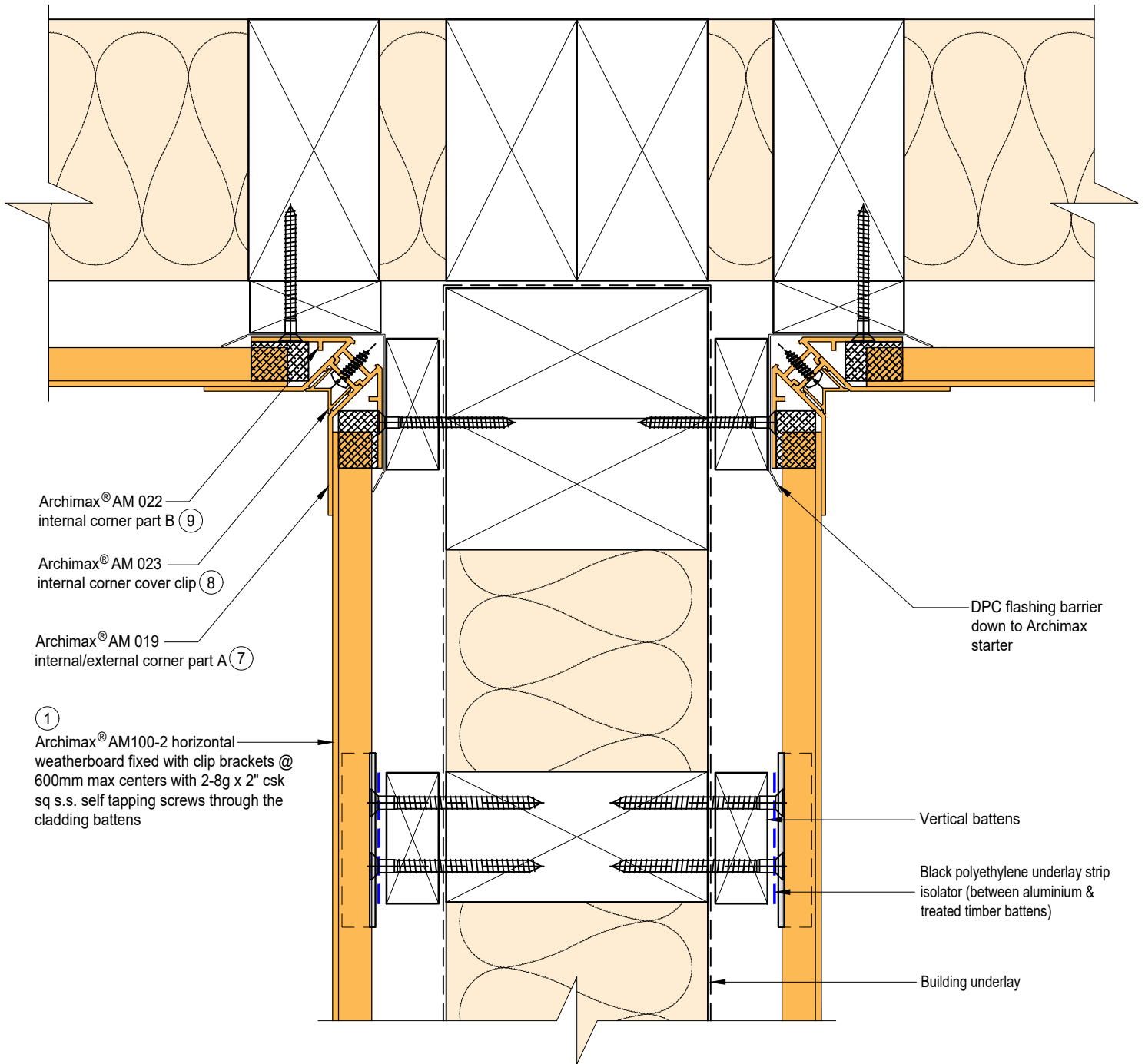
Vertical battens




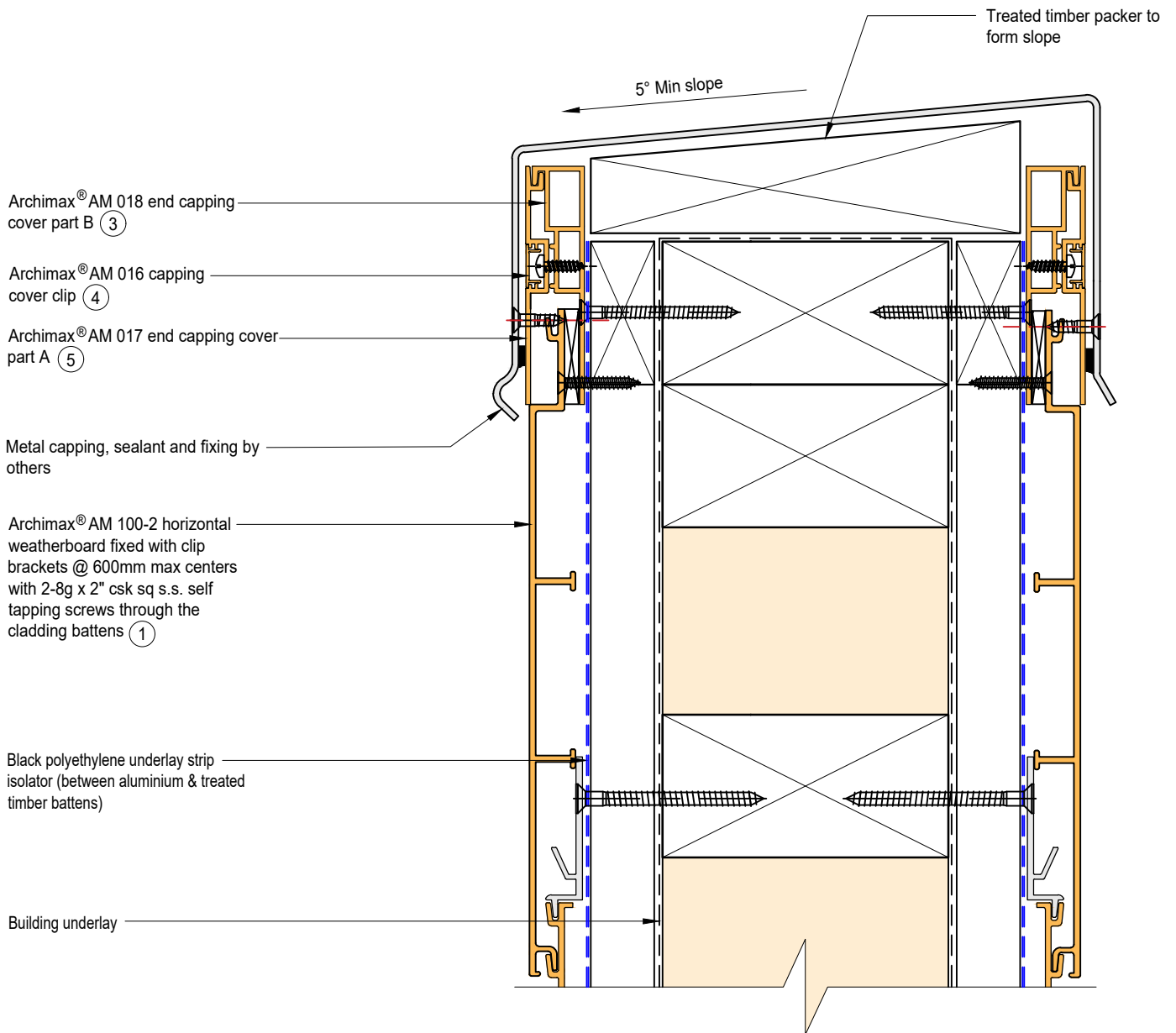
INTERIOR



BRANZ Appraised
Appraisal No. 1173 [2021]

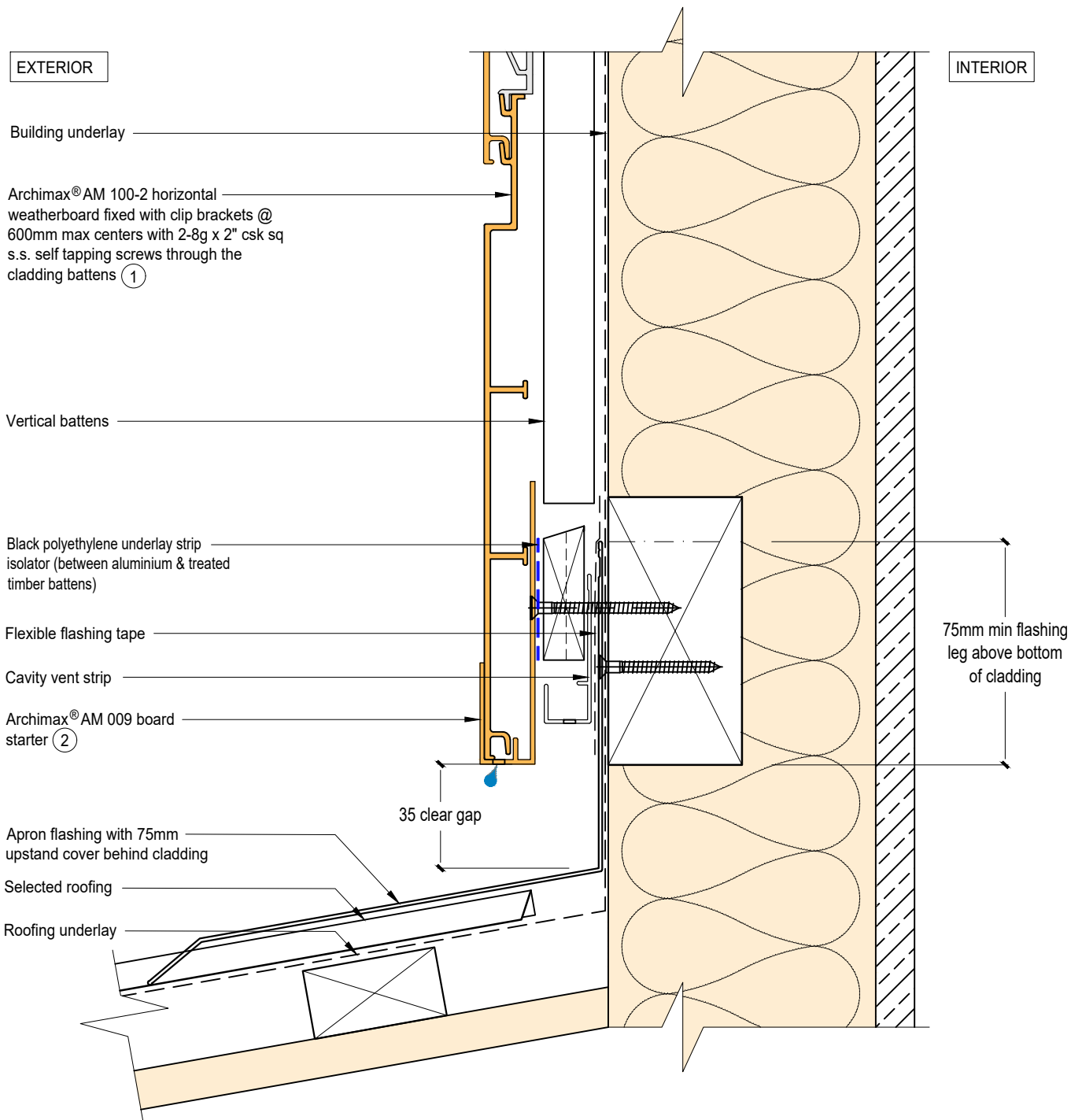



 <p>ARCHIMAX ALUMINIUM CLADDING SYSTEM <i>Creating more durable building envelopes</i> www.archimax.co.nz</p>	System AM 100-2 - HORIZONTAL WEATHERBOARD	Detail ARCHIMAX® INTERNAL CORNER JUNCTION DETAIL	Drawing No. Rev. AM-BJ-H13 D
	<p>This drawing is the copyright of Archimax Limited. Modification of details for job specification requirements must be approved by Archimax Ltd. The building designer is ultimately responsible to ensure all building work is designed and constructed according to building code requirements, best code of practice industry guidelines. All components must be supplied by Archimax. Archimax reserves the right to alter or upgrade details at any time without prior notice.</p>		Scale Date 1:2 NOV23

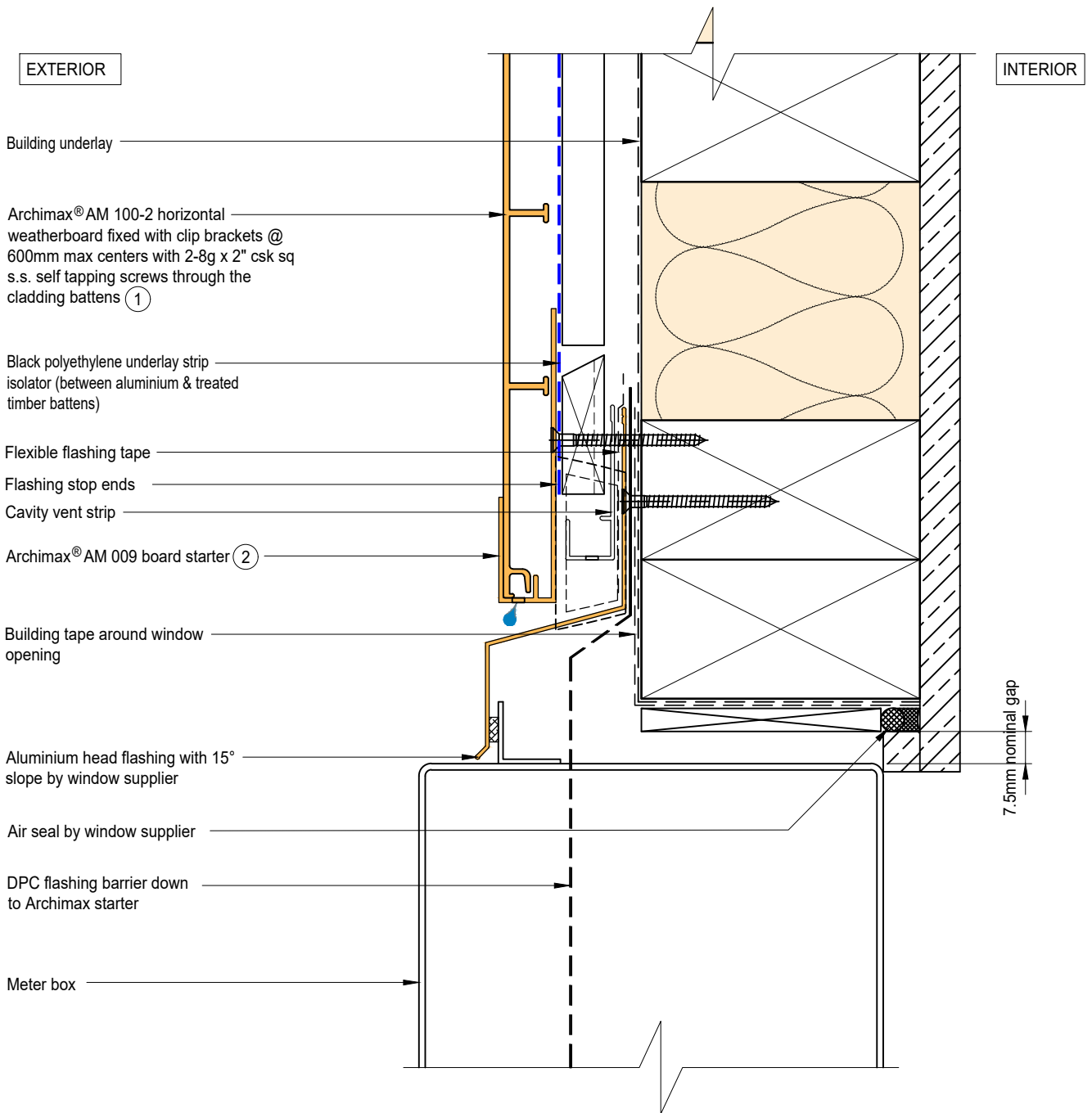



ARCHIMAX
ALUMINIUM CLADDING SYSTEM
Creating more durable building envelopes
www.archimax.co.nz

System AM 100-2 - HORIZONTAL WEATHERBOARD	Detail ARCHIMAX® PARAPET WITH CAVITY DETAIL	Drawing No. Rev. AM-PAR-H14 D
<small>This drawing is the copyright of Archimax Limited. Modification of details for job specification requirements must be approved by Archimax Ltd. The building designer is ultimately responsible to ensure all building work is designed and constructed according to building code requirements, best code of practice industry guidelines. All components must be supplied by Archimax. Archimax reserves the right to alter or upgrade details at any time without prior notice.</small>		Scale 1:2 Date NOV23




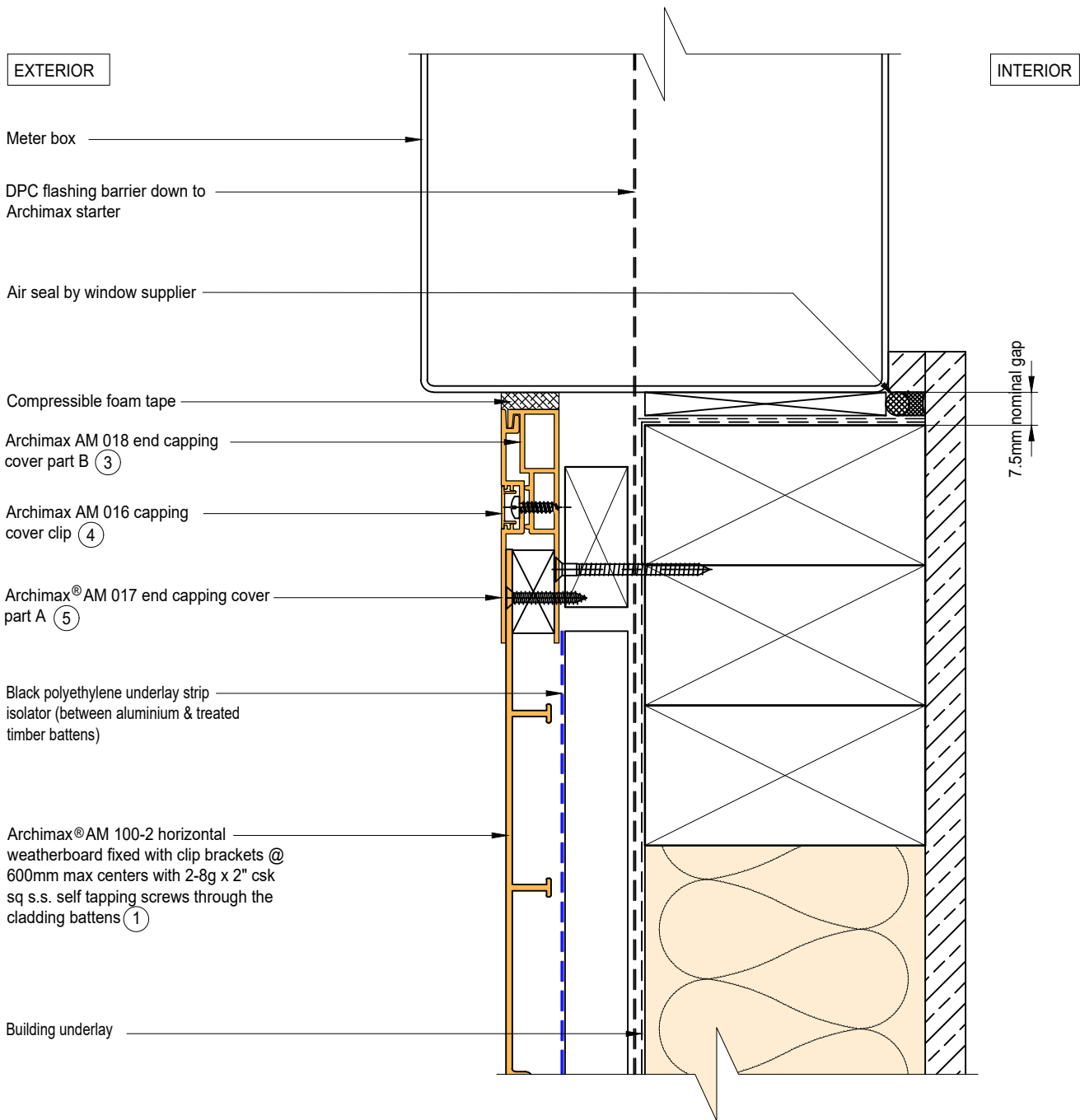
 <p>ARCHIMAX ALUMINIUM CLADDING SYSTEM <i>Creating more durable building envelopes</i> www.archimax.co.nz</p>	<p>System AM 100-2 - HORIZONTAL WEATHERBOARD</p>	<p>Detail ARCHIMAX® LOWER ROOF WALL JUNCTION DETAIL</p>	<p>Drawing No. Rev. AM-RW-H15 D</p>
	<p>This drawing is the copyright of Archimax Limited. Modification of details for job specification requirements must be approved by Archimax Ltd. The building designer is ultimately responsible to ensure all building work is designed and constructed according to building code requirements, best code of practice industry guidelines. All components must be supplied by Archimax. Archimax reserves the right to alter or upgrade details at any time without prior notice.</p>		<p>Scale Date 1:2 NOV23</p>




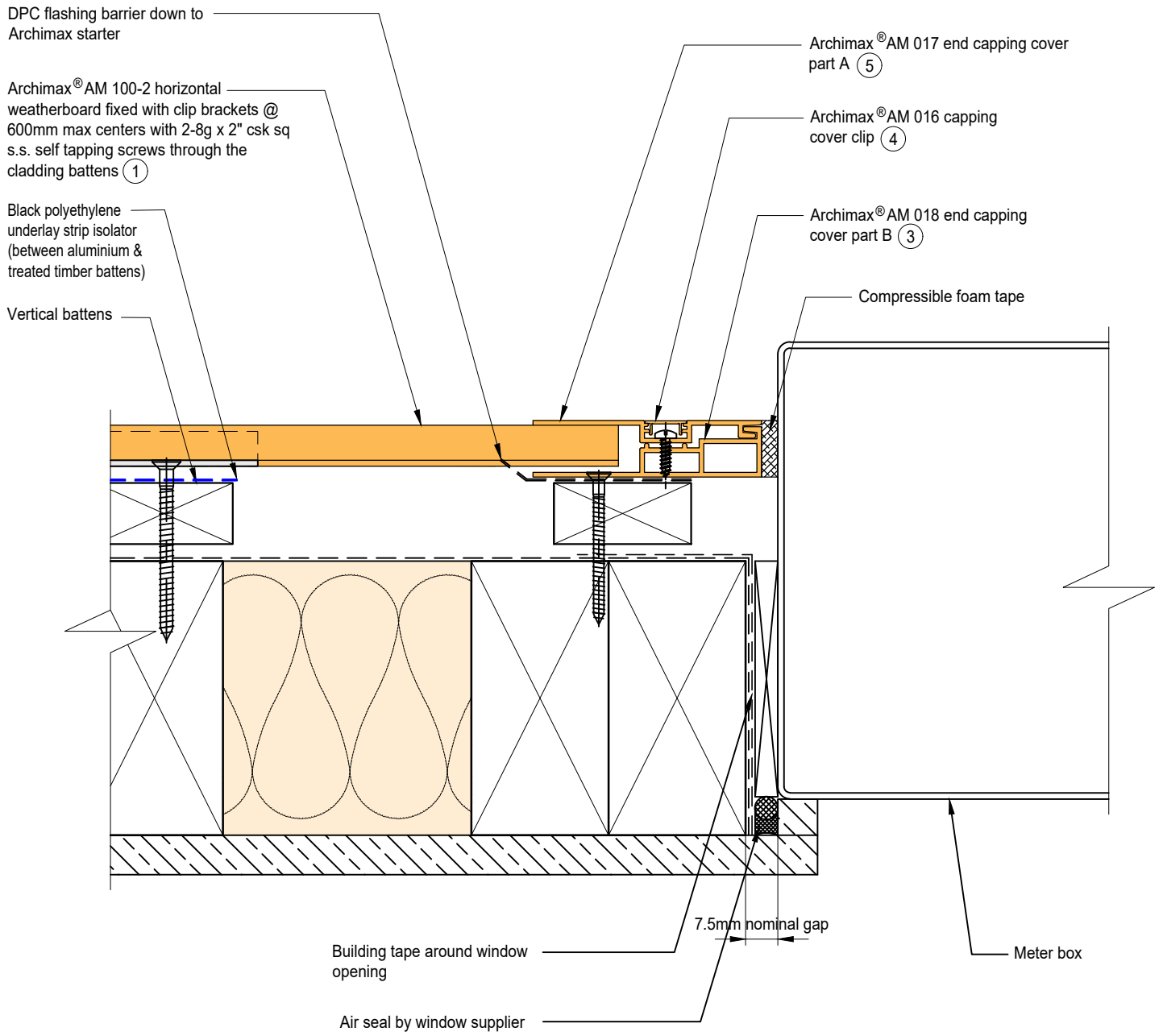
NOTE:
STOP ENDS TO BE INSTALLED AT FLASHING ENDS




 <p>ARCHIMAX ALUMINIUM CLADDING SYSTEM <i>Creating more durable building envelopes</i> www.archimax.co.nz</p>	<p>System AM 100-2 - HORIZONTAL WEATHERBOARD</p>	<p>Detail ARCHIMAX® METER BOX HEAD DETAIL</p>	<p>Drawing No. Rev. AM-MB-H16 D</p>
	<p>This drawing is the copyright of Archimax Limited. Modification of details for job specification requirements must be approved by Archimax Ltd. The building designer is ultimately responsible to ensure all building work is designed and constructed according to building code requirements, best code of practice industry guidelines. All components must be supplied by Archimax. Archimax reserves the right to alter or upgrade details at any time without prior notice.</p>		<p>Scale Date 1:2 NOV23</p>

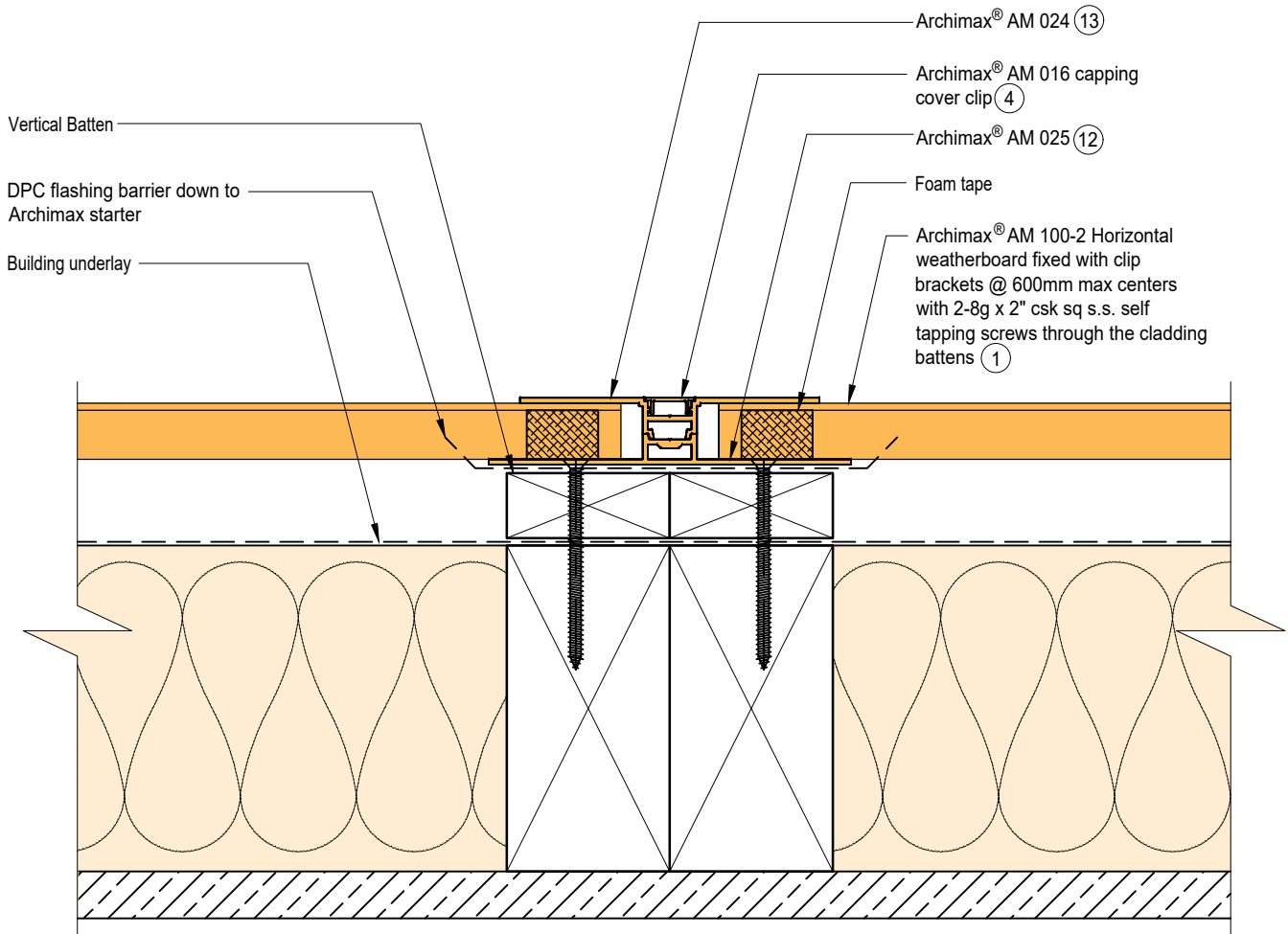


 <p>ARCHIMAX ALUMINIUM CLADDING SYSTEM <i>Creating more durable building envelopes</i> www.archimax.co.nz</p>	System AM 100-2 - HORIZONTAL WEATHERBOARD	Detail ARCHIMAX® METER BOX SILL DETAIL	Drawing No. Rev. AM-MB-H17 D
	<small>This drawing is the copyright of Archimax Limited. Modification of details for job specification requirements must be approved by Archimax Ltd. The building designer is ultimately responsible to ensure all building work is designed and constructed according to building code requirements, best code of practice industry guidelines. All components must be supplied by Archimax. Archimax reserves the right to alter or upgrade details at any time without prior notice.</small>		Scale Date 1:2 NOV23




 <p>ARCHIMAX ALUMINIUM CLADDING SYSTEM <i>Creating more durable building envelopes</i> www.archimax.co.nz</p>	<p>System AM 100-2 - HORIZONTAL WEATHERBOARD</p>	<p>Detail ARCHIMAX® METER BOX JAMB DETAIL</p>	<p>Drawing No. Rev. AM-MB-H18 D</p>
	<p>This drawing is the copyright of Archimax Limited. Modification of details for job specification requirements must be approved by Archimax Ltd. The building designer is ultimately responsible to ensure all building work is designed and constructed according to building code requirements, best code of practice industry guidelines. All components must be supplied by Archimax. Archimax reserves the right to alter or upgrade details at any time without prior notice.</p>		<p>Scale Date 1:2 NOV23</p>

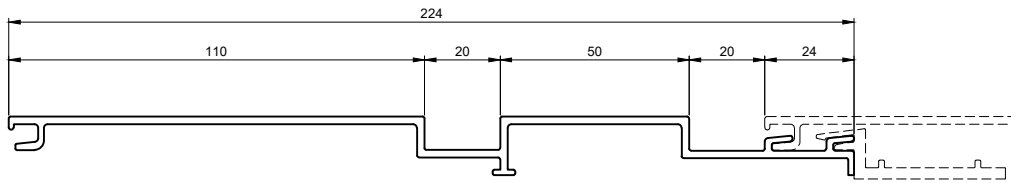
EXTERIOR



INTERIOR



 <p>ARCHIMAX ALUMINIUM CLADDING SYSTEM <i>Creating more durable building envelopes</i> www.archimax.co.nz</p>	<p>System AM 100-2 - HORIZONTAL WEATHERBOARD</p>	<p>Detail ARCHIMAX® VERTICAL JOINT DETAIL</p>	<p>Drawing No. Rev. AM-VJ-H19 C</p>			
	<p>This drawing is the copyright of Archimax Limited. Modification of details for job specification requirements must be approved by Archimax Ltd. The building designer is ultimately responsible to ensure all building work is designed and constructed according to building code requirements, best code of practice industry guidelines. All components must be supplied by Archimax. Archimax reserves the right to alter or upgrade details at any time without prior notice.</p>		<table border="1"> <tr> <td>Scale</td> <td>Date</td> </tr> <tr> <td>1:2</td> <td>AUG23</td> </tr> </table>	Scale	Date	1:2
Scale	Date					
1:2	AUG23					



①

AM 100-2 Archimax Horizontal / Vertical Weatherboard

<p>②</p>	<p>③</p>	<p>④</p>	<p>⑤</p>	<p>⑥</p>
AM 009	AM 018	AM 016	AM 017	AM 029
Board Starter	End Capping Part B	Jointer / Jamb / Sill Capping Cover Clip	End Capping Part A	Clip Bracket
<p>⑨</p>	<p>⑧</p>	<p>⑨</p>	<p>⑪</p>	
AM 019	AM 023	AM 022	AM 020	
Internal/External Corner Part A	Internal Corner Cover Clip	Internal Corner Part B	External Cover Cover Clip	