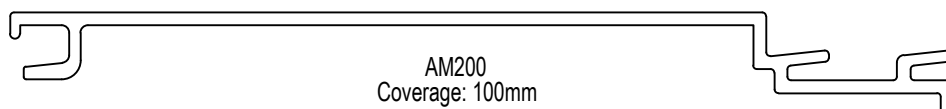
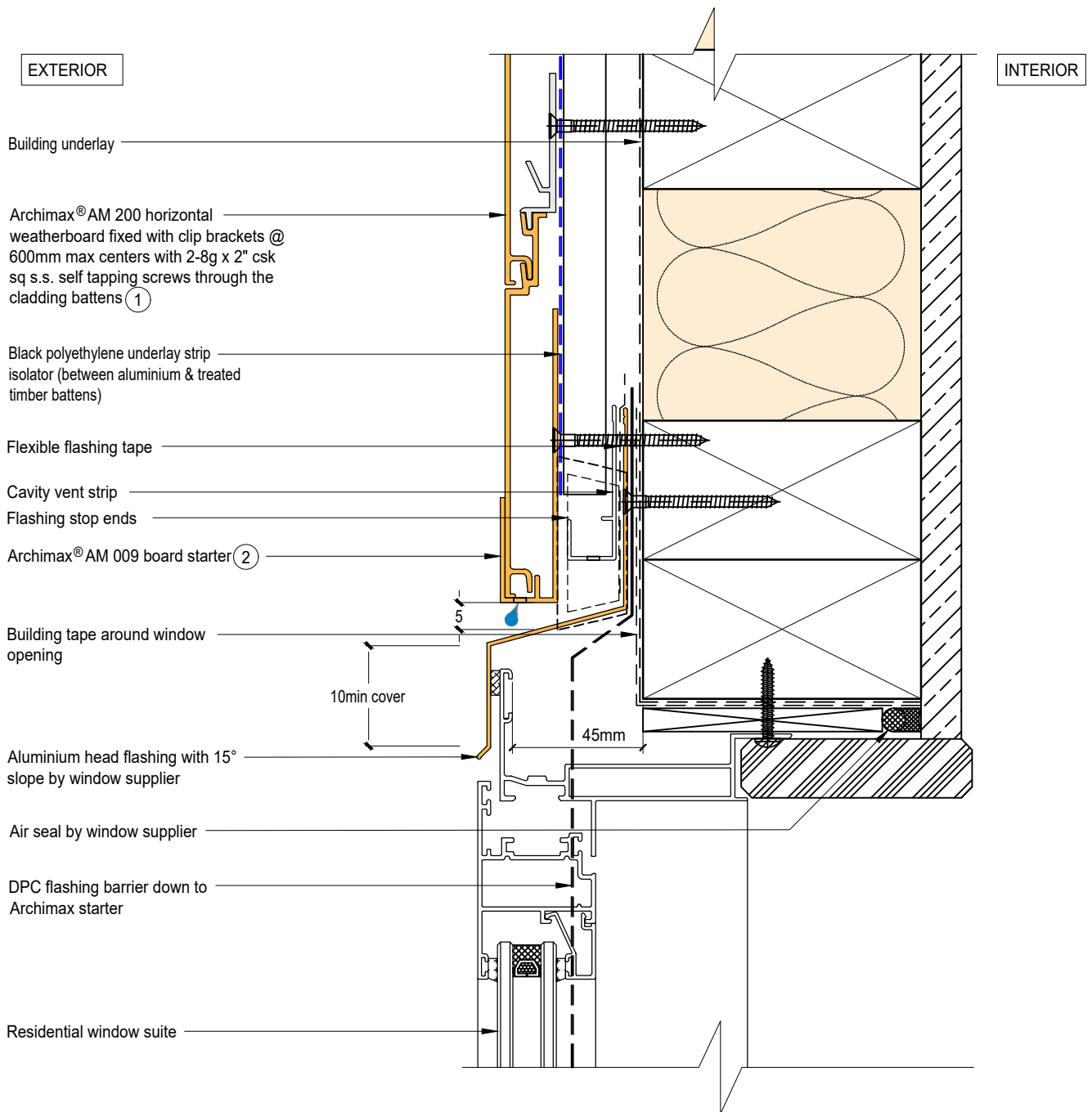




Archimax[®] Aluminium Cladding System
AM200 Horizontal Profile - Installation Details

Drawing No.	Rev	Description
AM-WH-H1	D	Archimax [®] Window Head Detail
AM-WS-H2.1	D	Archimax [®] Window Sill Detail
AM-WS-H2.2	D	Archimax [®] Window Sill Detail
AM-WJ-H3	D	Archimax [®] Window Jamb Detail
AM-EXT-H4	D	Archimax [®] External Corner Detail
AM-INT-H5	D	Archimax [®] Internal Corner Detail
AM-CBS-H6.1	D	Archimax [®] Concrete Floor Board Starter Detail – Timber
AM-CBS-H6.2	D	Archimax [®] Concrete Floor Board Starter Detail – Fire Wall
AM-HJ-H7	D	Archimax [®] Horizontal Joint Detail
AM-DJ-H8	D	Archimax [®] Deck Junction Detail
AM-PP-H9A	D	Archimax [®] Pipe Penetration Plan View Detail
AM-PP-H9B	D	Archimax [®] Pipe Penetration Section View Detail
AM-SO-H10	D	Archimax [®] Soffit Detail
AM-SO-H11.1	D	Archimax [®] Fascia, Soffit & Wall Detail
AM-SO-H11.2	D	Archimax [®] Fascia, Soffit & Wall Detail (90° Soffit/Wall)
AM-SO-H11.3	D	Archimax [®] Fascia, Board Soffit & Wall Detail
AM-SO-H12	D	Archimax [®] Non-Soffit Detail
AM-BJ-H13	D	Archimax [®] Internal Corner Junction Detail
AM-PAR-H14	D	Archimax [®] Parapet with Cavity Detail
AM-RW-H15	D	Archimax [®] Lower Roof Wall Junction Detail
AM-MB-H16	D	Archimax [®] Meter Box Head Detail
AM-MB-H17	D	Archimax [®] Meter Box Sill Detail
AM-MB-H18	D	Archimax [®] Meter Box Jamb Detail
AM-MB-H19	D	Archimax [®] Meter Box Jamb Detail




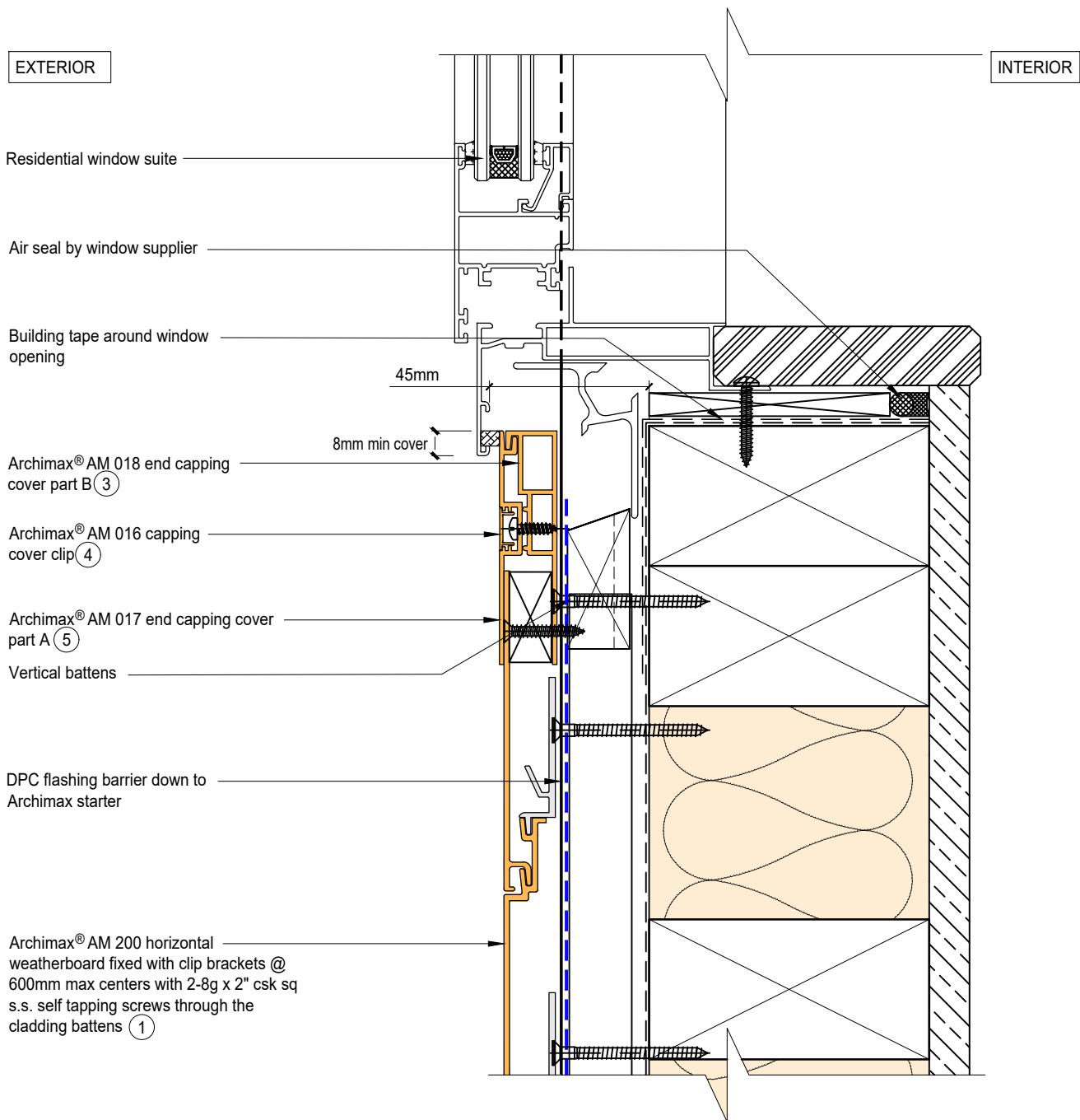


NOTE:

1. Stop ends to be installed at flashing ends
2. Minimum clearance between the AIR BARRIER and WINDOW JOINERY to be 45mm. Window joinery should not be permanently fixed until cladding been installed.




	System AM 200 - HORIZONTAL WEATHERBOARD	Detail ARCHIMAX® WINDOW HEAD DETAIL	Drawing No. AM-WH-H1 Rev. D
	This drawing is the copyright of Archimax Limited. Modification of details for job specification requirements must be approved by Archimax Ltd. The building designer is ultimately responsible to ensure all building work is designed and constructed according to building code requirements, best code of practice industry guidelines. All components must be supplied by Archimax. Archimax reserves the right to alter or upgrade details at any time without prior notice.		Scale 1:2

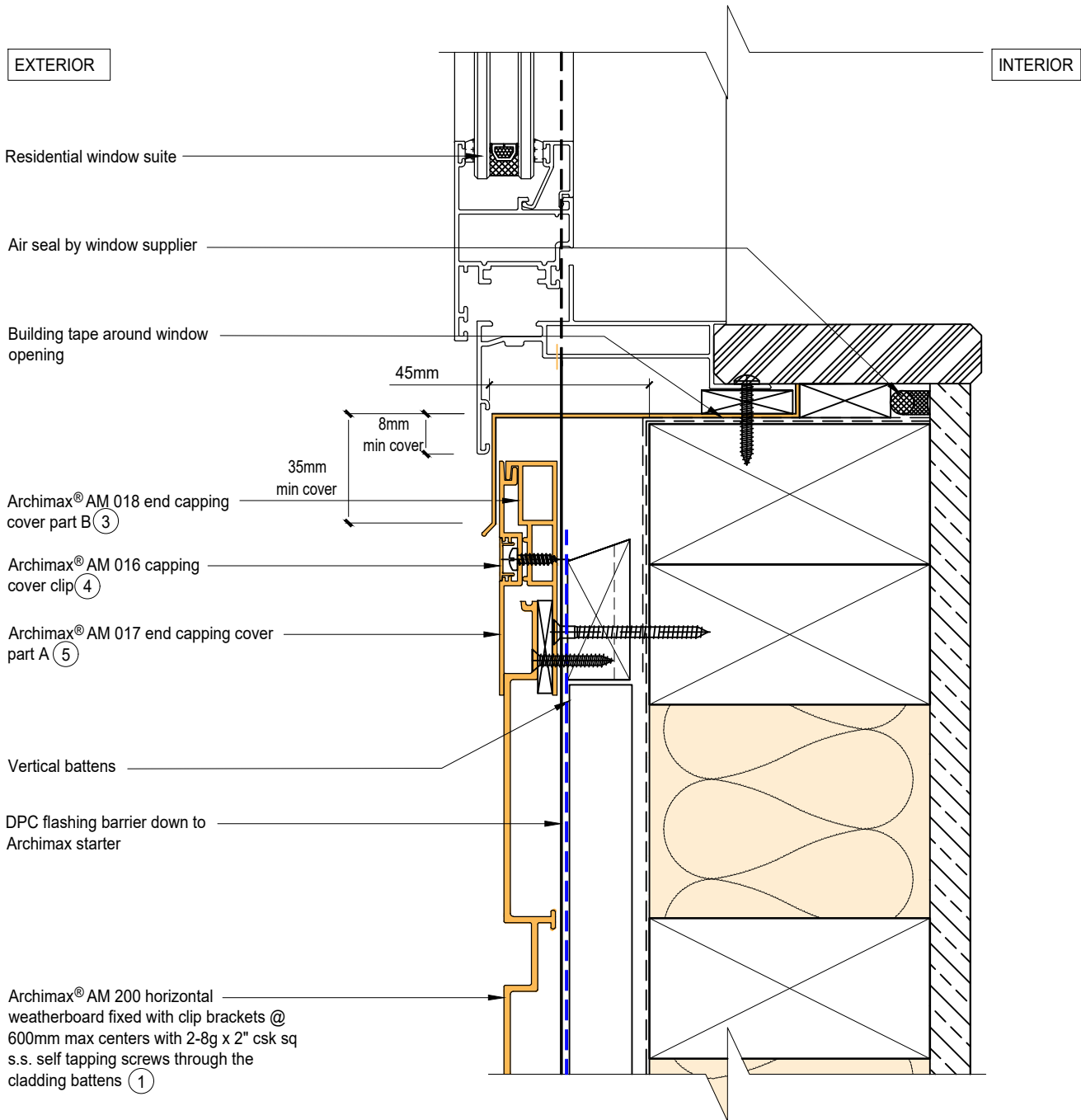


NOTE:

1. Minimum clearance between the AIR BARRIER and WINDOW JOINERY to be 45mm. Window joinery should not be permanently fixed until cladding been installed.




 <p>ARCHIMAX ALUMINIUM CLADDING SYSTEM <i>Creating more durable building envelopes</i> www.archimax.co.nz</p>	<p>System AM 200 - HORIZONTAL WEATHERBOARD</p>	<p>Detail ARCHIMAX® WINDOW SILL DETAIL</p>	<p>Drawing No. Rev. AM-WS-H2.1 D</p>	
	<p>This drawing is the copyright of Archimax Limited. Modification of details for job specification requirements must be approved by Archimax Ltd. The building designer is ultimately responsible to ensure all building work is designed and constructed according to building code requirements, best code of practice industry guidelines. All components must be supplied by Archimax. Archimax reserves the right to alter or upgrade details at any time without prior notice.</p>			<p>Scale 1:2</p>



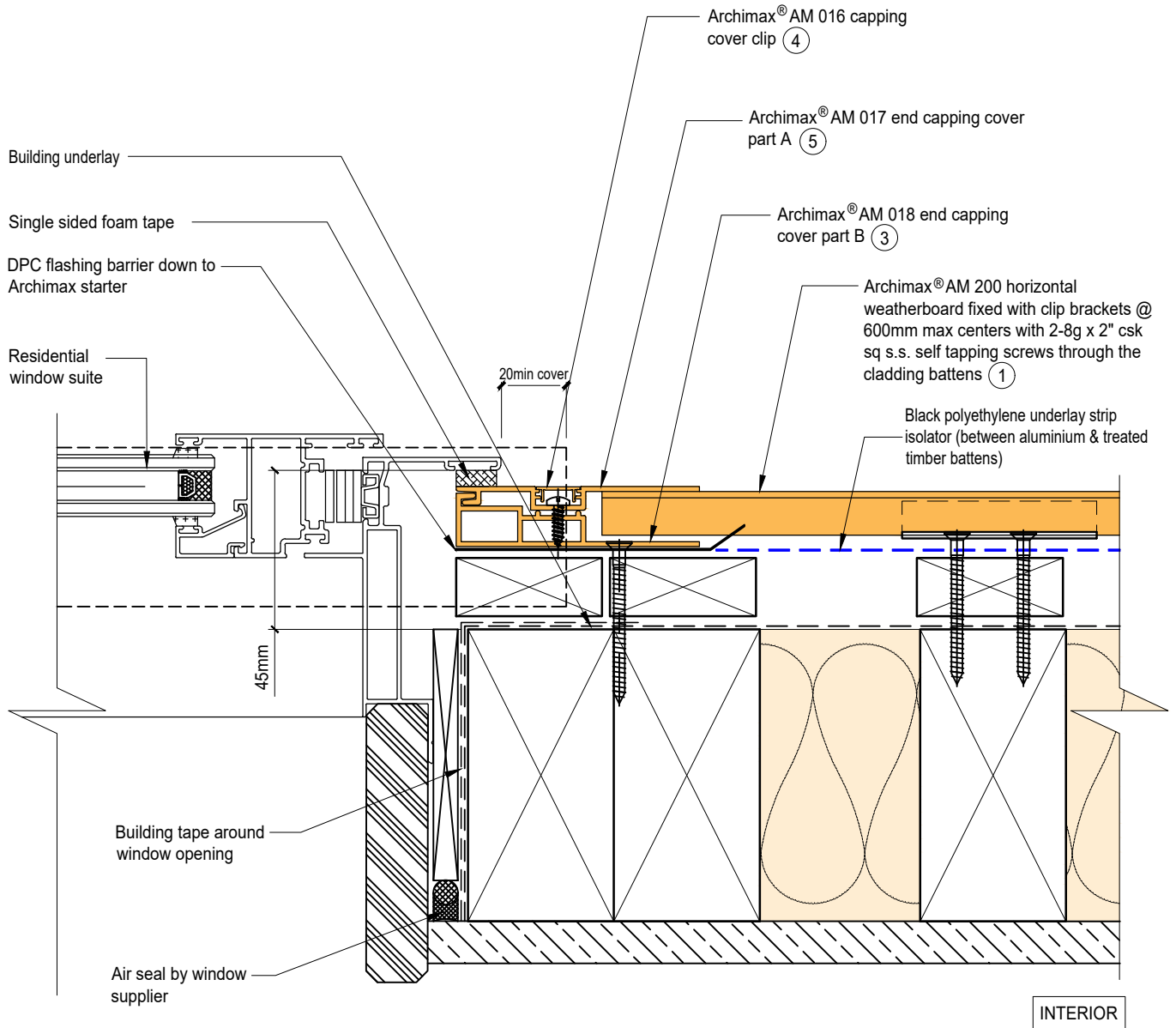
NOTE:

1. Minimum clearance between the AIR BARRIER and WINDOW JOINERY to be 45mm. Window joinery should not be permanently fixed until cladding been installed.



 <p>ARCHIMAX ALUMINIUM CLADDING SYSTEM <i>Creating more durable building envelopes</i> www.archimax.co.nz</p>	<p>System AM 200 - HORIZONTAL WEATHERBOARD</p>	<p>Detail ARCHIMAX® WINDOW SILL DETAIL</p>	<p>Drawing No. Rev. AM-WS-H2.2 D</p>	
	<p>This drawing is the copyright of Archimax Limited. Modification of details for job specification requirements must be approved by Archimax Ltd. The building designer is ultimately responsible to ensure all building work is designed and constructed according to building code requirements, best code of practice industry guidelines. All components must be supplied by Archimax. Archimax reserves the right to alter or upgrade details at any time without prior notice.</p>			<p>Scale 1:2</p>


EXTERIOR



NOTE:

1. Minimum clearance between the AIR BARRIER and WINDOW JOINERY to be 45mm. Window joinery should not be permanently fixed until cladding been installed.



 <p>ARCHIMAX ALUMINIUM CLADDING SYSTEM <i>Creating more durable building envelopes</i> www.archimax.co.nz</p>	<p>System AM 200 - HORIZONTAL WEATHERBOARD</p>	<p>Detail ARCHIMAX® WINDOW JAMB DETAIL</p>	<p>Drawing No. Rev. AM-WJ-H3 D</p>
	<p>This drawing is the copyright of Archimax Limited. Modification of details for job specification requirements must be approved by Archimax Ltd. The building designer is ultimately responsible to ensure all building work is designed and constructed according to building code requirements, best code of practice industry guidelines. All components must be supplied by Archimax. Archimax reserves the right to alter or upgrade details at any time without prior notice.</p>		<p>Scale Date 1:2 NOV23</p>

EXTERIOR

INTERIOR

Building Underlay

Archimax® AM 200 horizontal weatherboard fixed with clip brackets @ 600mm max centers with 2-8g x 2" csk sq s.s. self tapping screws through the cladding battens ①

Black polyethylene underlay strip isolator (between aluminium & treated timber battens)

Vertical battens

Archimax® clip bracket AM 029

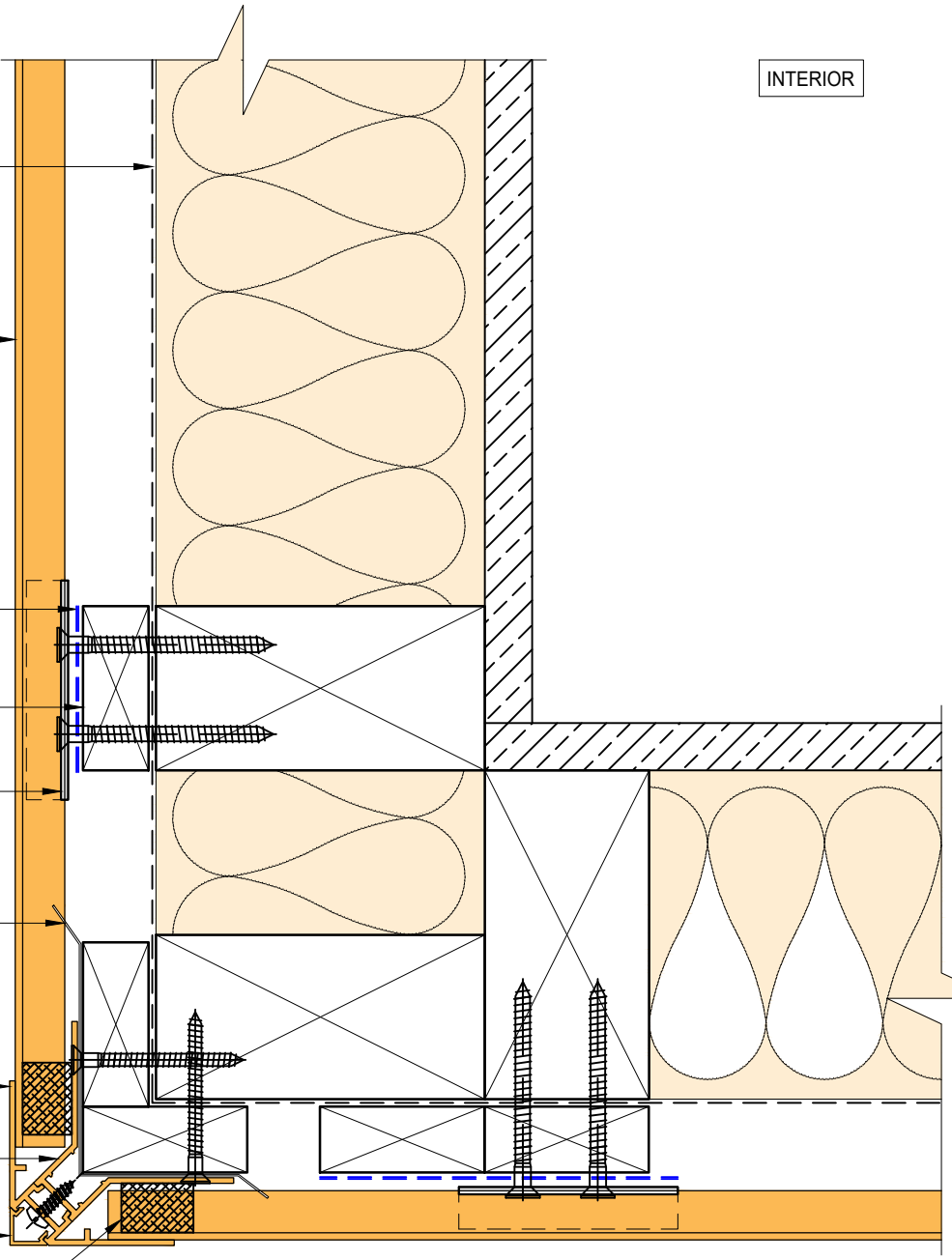
DPC flashing barrier down to Archimax starter

Archimax AM 019 internal/external corner part A ⑦

Archimax AM 022 internal corner part B ⑨

Archimax AM 020 external corner cover clip ⑪

Foam Tape



BRANZ Appraised
Appraisal No. 1173 [2021]



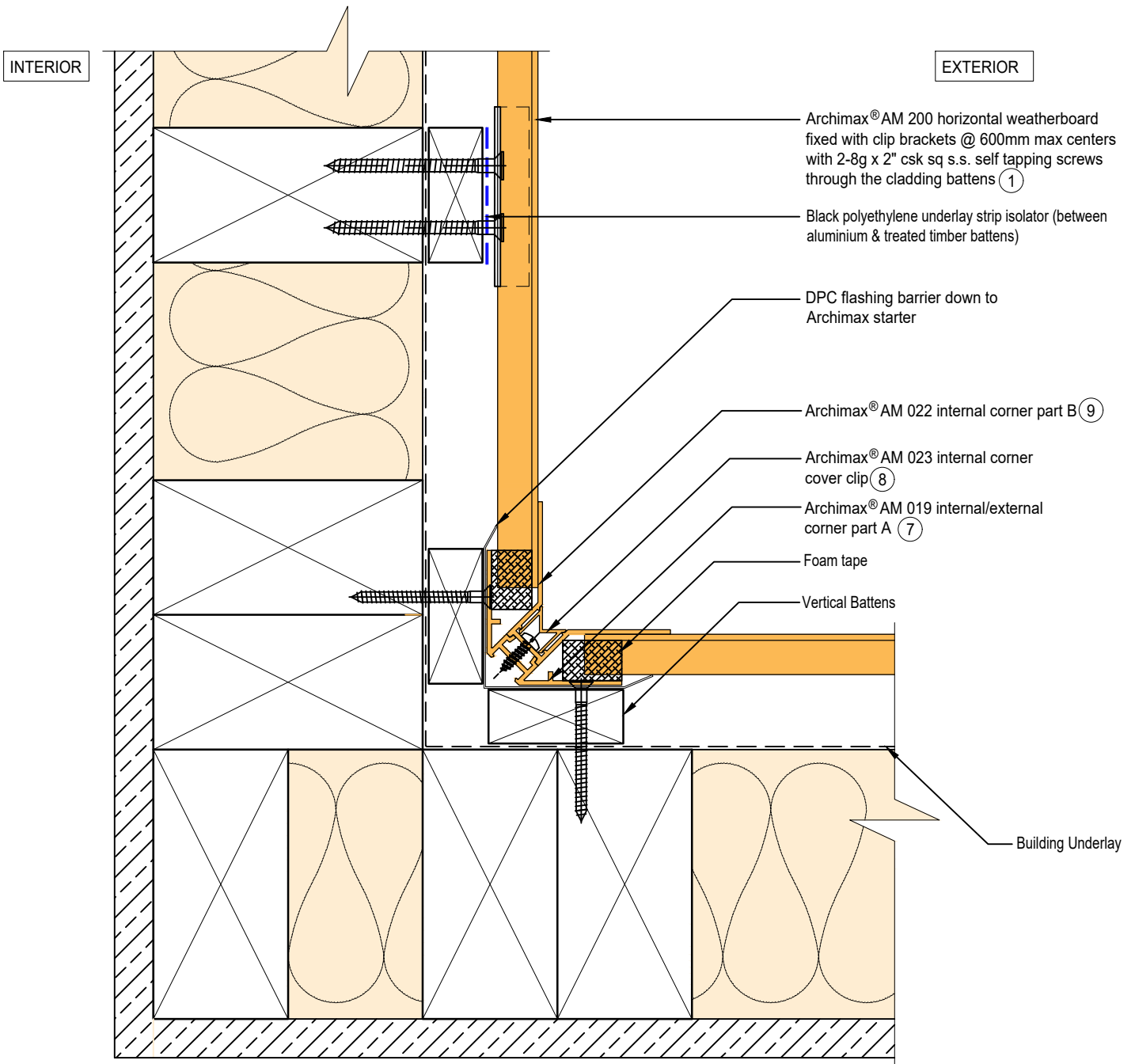
System
AM 200 - HORIZONTAL WEATHERBOARD

Detail
ARCHIMAX® EXTERNAL CORNER DETAIL

Drawing No. Rev.
AM-EXT-H4 D

This drawing is the copyright of Archimax Limited. Modification of details for job specification requirements must be approved by Archimax Ltd. The building designer is ultimately responsible to ensure all building work is designed and constructed according to building code requirements, best code of practice industry guidelines. All components must be supplied by Archimax. Archimax reserves the right to alter or upgrade details at any time without prior notice.

Scale Date
1:2 NOV23



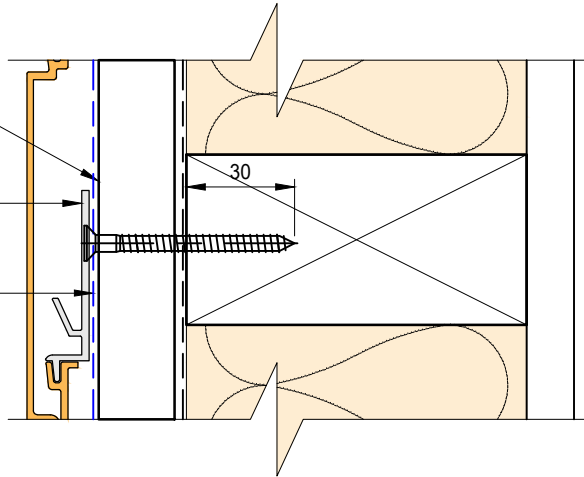
EXTERIOR

INTERIOR

Castellated timber batten (Vertical)

Archimax® clip bracket AM 029

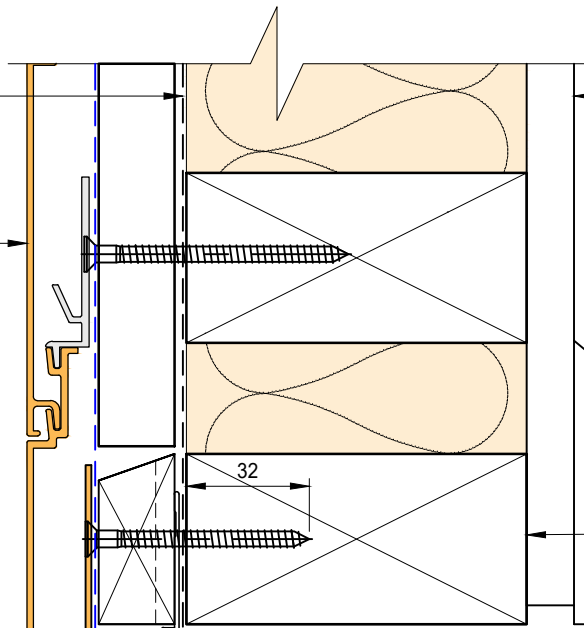
Black polyethylene underlay strip isolator (between aluminium & treated timber battens)



Building underlay

Interior lining

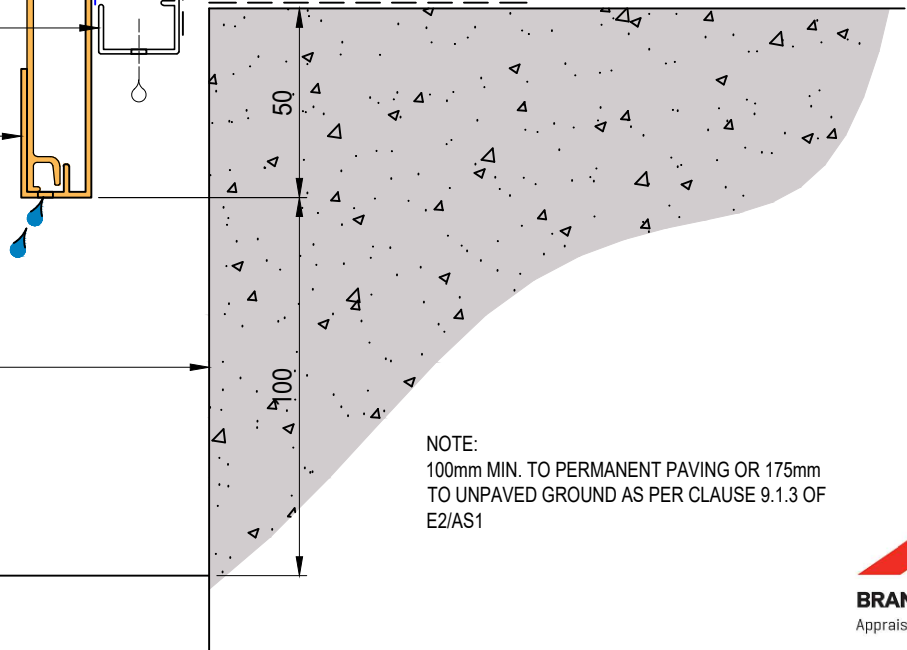
① Archimax® AM 200 horizontal weatherboard fixed with clip brackets @ 600mm max centers with 2-8g x 2" csk sq s.s. self tapping screws through the cladding battens



Bottom plate over DPC

Cavity vent strip (By others)

② Archimax® AM 009 board starter



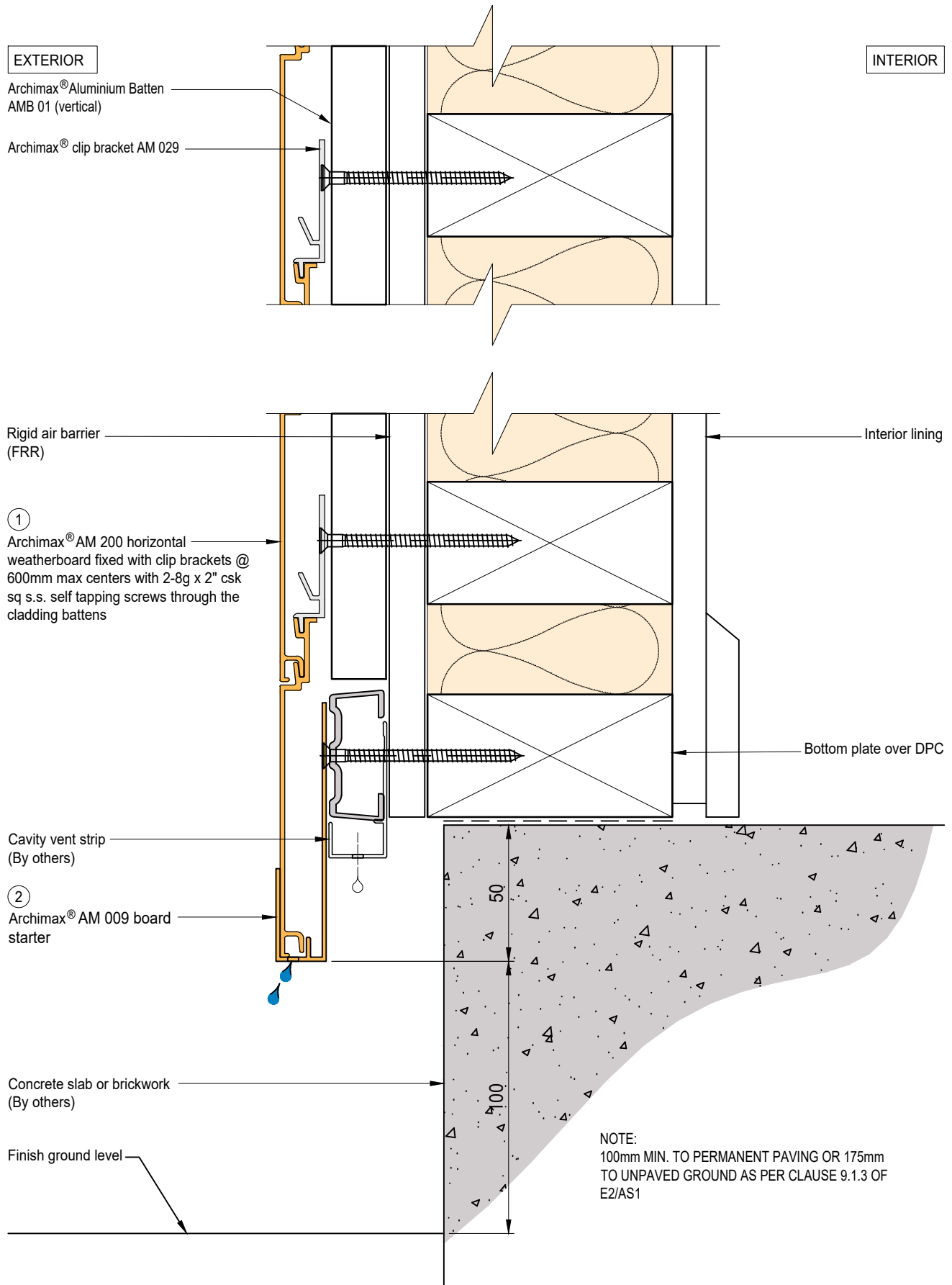
NOTE:
100mm MIN. TO PERMANENT PAVING OR 175mm
TO UNPAVED GROUND AS PER CLAUSE 9.1.3 OF
E2/AS1

Concrete slab or brickwork (By others)

Finish ground level



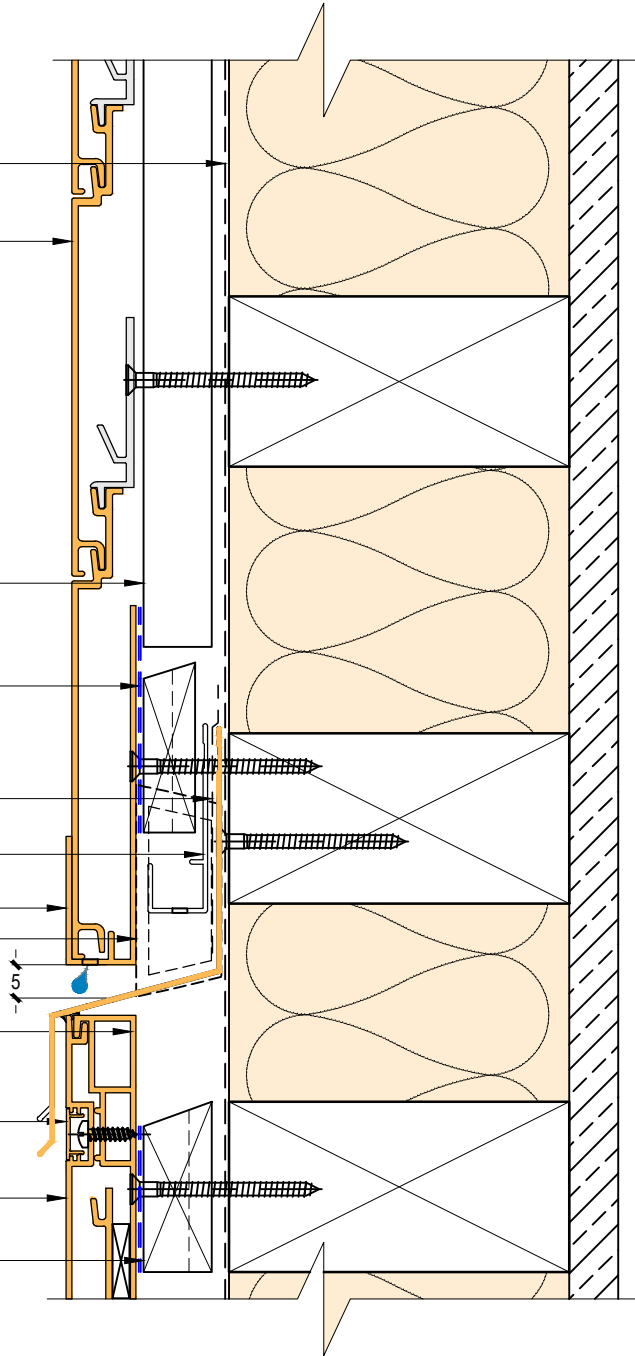
BRANZ Appraised
Appraisal No. 1173 [2021]



EXTERIOR


INTERIOR

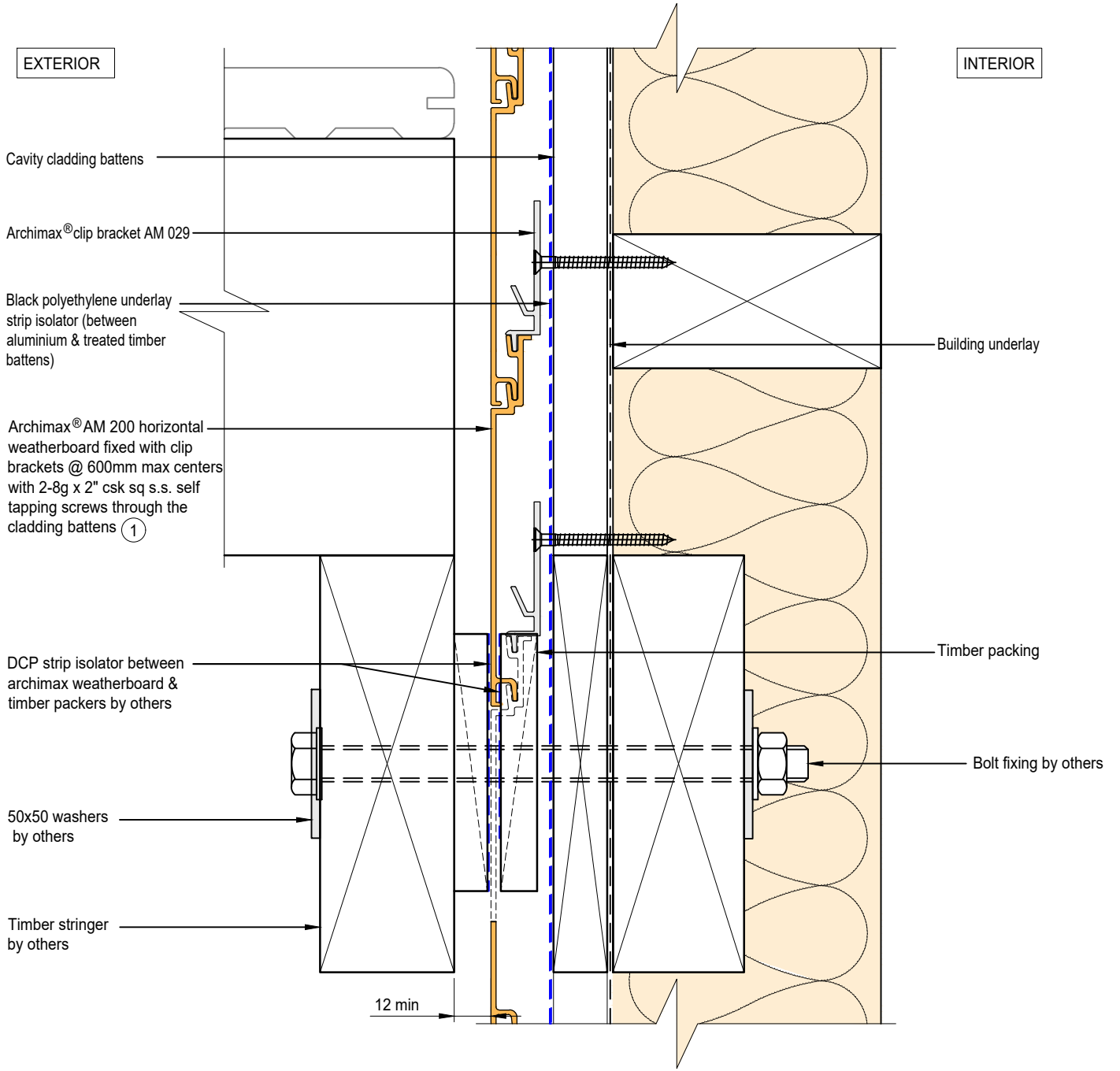
- Building underlay
- Archimax® AM 200 horizontal weatherboard fixed with clip brackets @ 600mm max centers with 2-8g x 2" csk sq s.s. self tapping screws through the cladding battens (1)
- Vertical battens
- Black polyethylene underlay strip isolator (between aluminium & treated timber battens)
- Flexible flashing tape
- Cavity vent strip
- Archimax AM 009 board starter (2)
- Inter-Storey flashing stop ends
- Archimax® AM 018 end capping cover part B (3)
- Archimax® AM 016 capping cover clip (4)
- Archimax® AM 017 end capping cover part A (5)
- Horizontal battens



NOTE:
STOP ENDS TO BE INSTALLED AT INTER-STOREY FLASHING ENDS



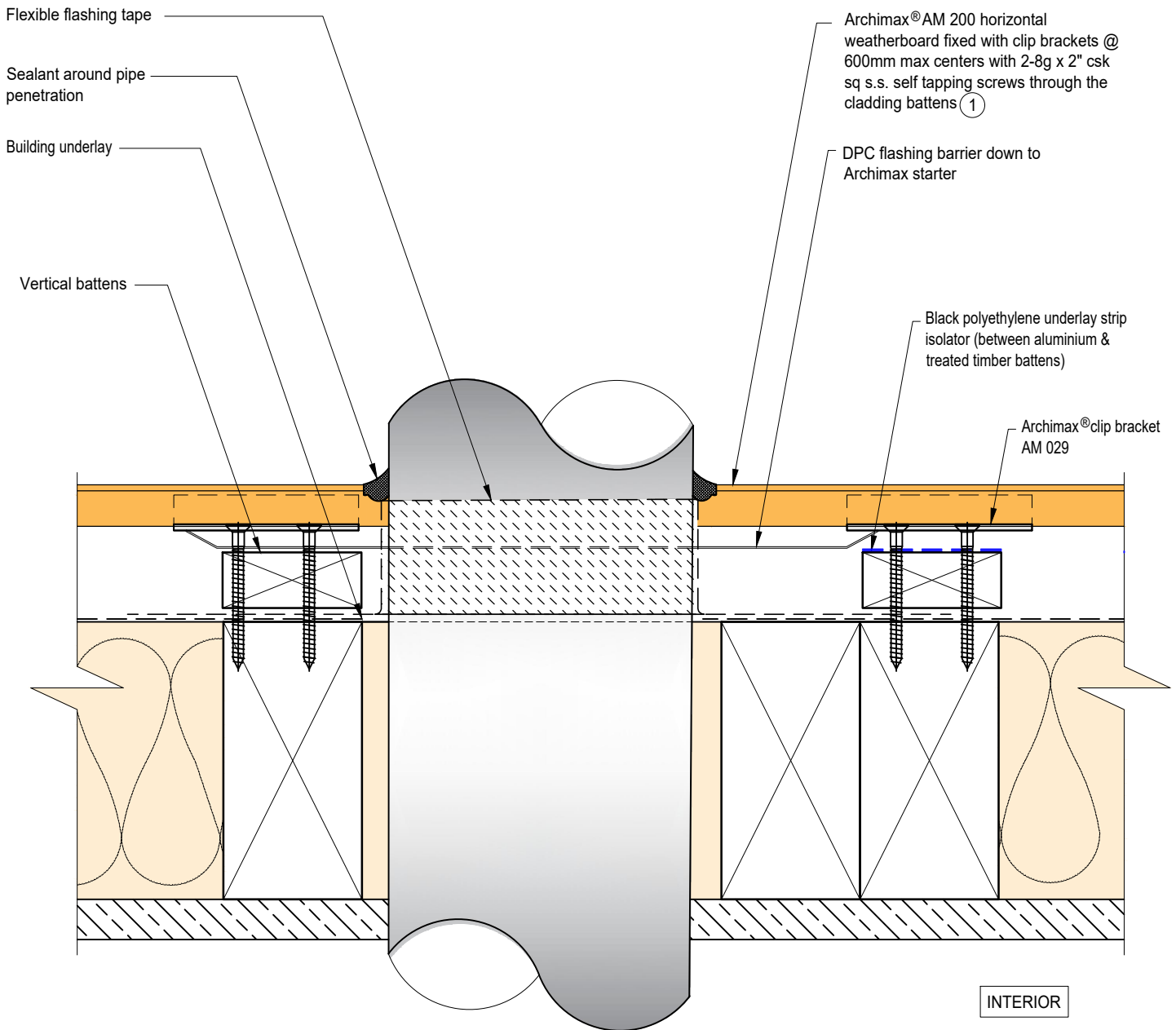
 <p>ARCHIMAX ALUMINIUM CLADDING SYSTEM <i>Creating more durable building envelopes</i> www.archimax.co.nz</p>	System AM 200 - HORIZONTAL WEATHERBOARD	Detail ARCHIMAX® HORIZONTAL JOINT DETAIL	Drawing No. Rev. AM-HJ-H7 D
	<small>This drawing is the copyright of Archimax Limited. Modification of details for job specification requirements must be approved by Archimax Ltd. The building designer is ultimately responsible to ensure all building work is designed and constructed according to building code requirements, best code of practice industry guidelines. All components must be supplied by Archimax. Archimax reserves the right to alter or upgrade details at any time without prior notice.</small>		Scale Date 1:2 NOV23



ARCHIMAX
ALUMINIUM CLADDING SYSTEM
Creating more durable building envelopes
www.archimax.co.nz

System AM 200 - HORIZONTAL WEATHERBOARD	Detail ARCHIMAX® DECK JUNCTION DETAIL	Drawing No. AM-DJ-H8	Rev. D
This drawing is the copyright of Archimax Limited. Modification of details for job specification requirements must be approved by Archimax Ltd. The building designer is ultimately responsible to ensure all building work is designed and constructed according to building code requirements, best code of practice industry guidelines. All components must be supplied by Archimax. Archimax reserves the right to alter or upgrade details at any time without prior notice.		Scale 1:2	Date NOV23

EXTERIOR



INTERIOR



BRANZ Appraised
Appraisal No. 1173 [2021]

EXTERIOR

INTERIOR

Archimax® AM 200 horizontal weatherboard fixed with clip brackets @ 600mm max centers with 2-8g x 2" csk sq s.s. self tapping screws through the cladding battens ①

Vertical battens

Archimax® clip bracket AM 029

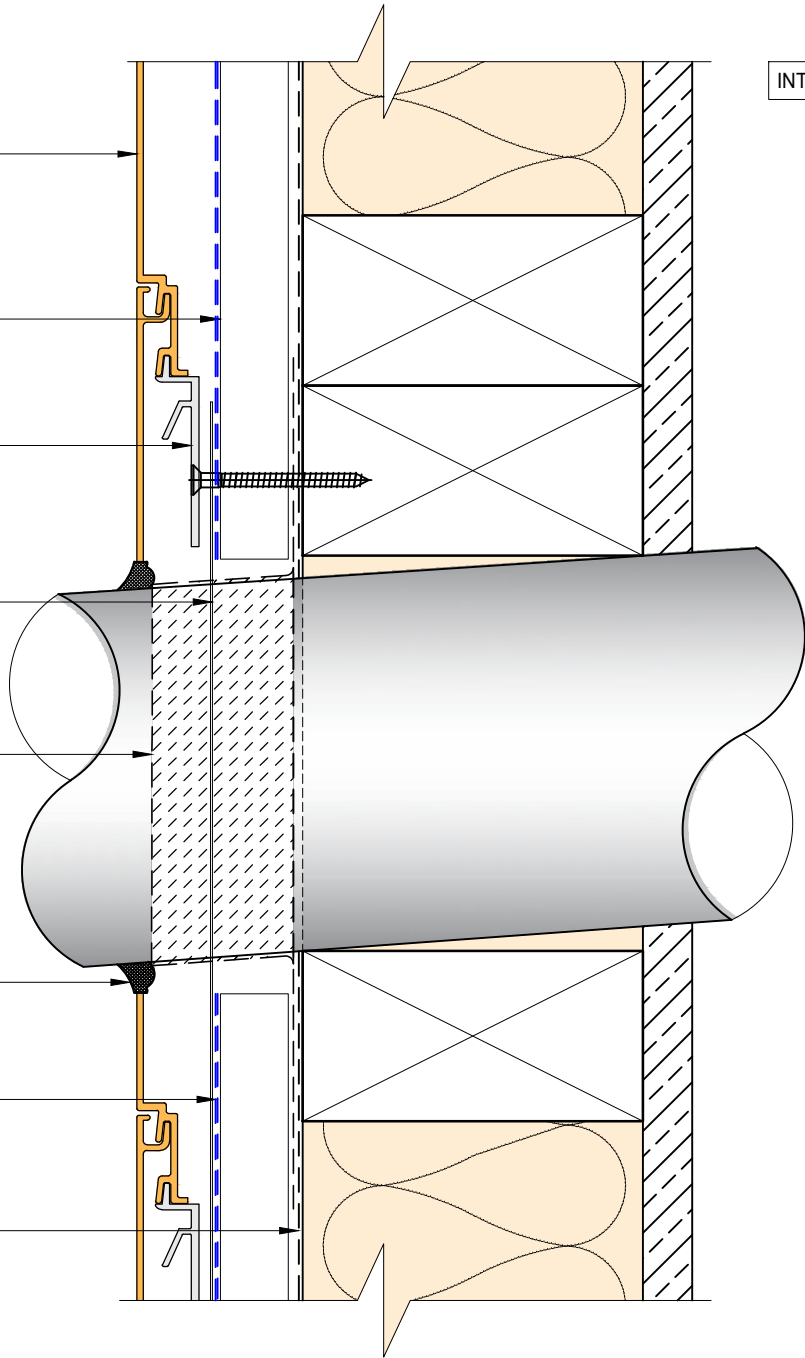
DPC flashing barrier down to Archimax starter

Flexible flashing tape

Sealant around pipe penetration

Black polyethylene underlay strip isolator (between aluminium & treated timber battens)

Building underlay



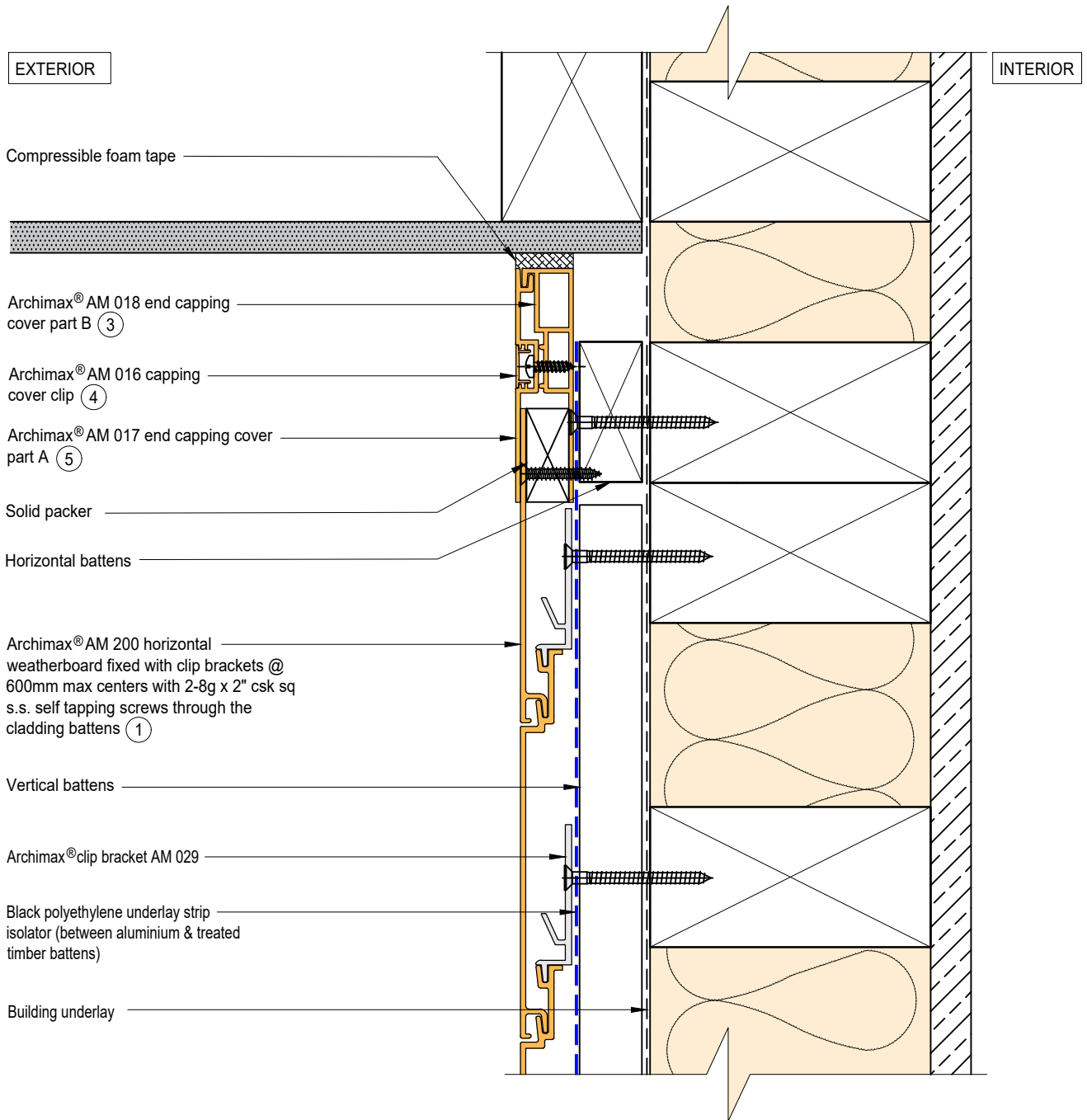
System
AM 200 - HORIZONTAL WEATHERBOARD

Detail
ARCHIMAX® PIPE PENETRATION - SECTION VIEW DETAIL

Drawing No. Rev.
AM-PP-H9b D

This drawing is the copyright of Archimax Limited. Modification of details for job specification requirements must be approved by Archimax Ltd. The building designer is ultimately responsible to ensure all building work is designed and constructed according to building code requirements, best code of practice industry guidelines. All components must be supplied by Archimax. Archimax reserves the right to alter or upgrade details at any time without prior notice.

Scale Date
1:2 NOV23




ARCHIMAX
 ALUMINIUM CLADDING SYSTEM
Creating more durable building envelopes
 www.archimax.co.nz

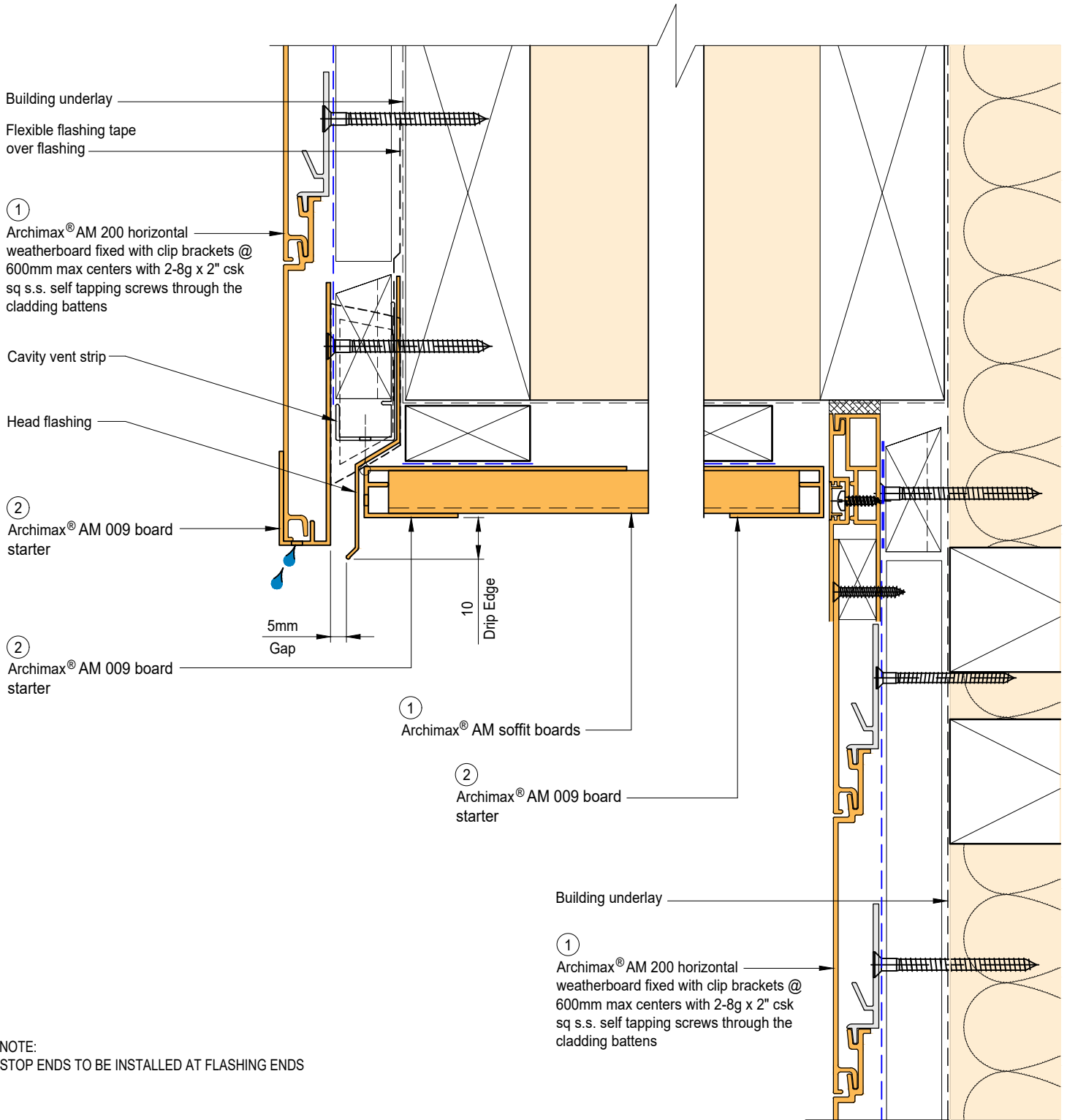
System
 AM 200 - HORIZONTAL
 WEATHERBOARD


Detail
 ARCHIMAX® SOFFIT DETAIL

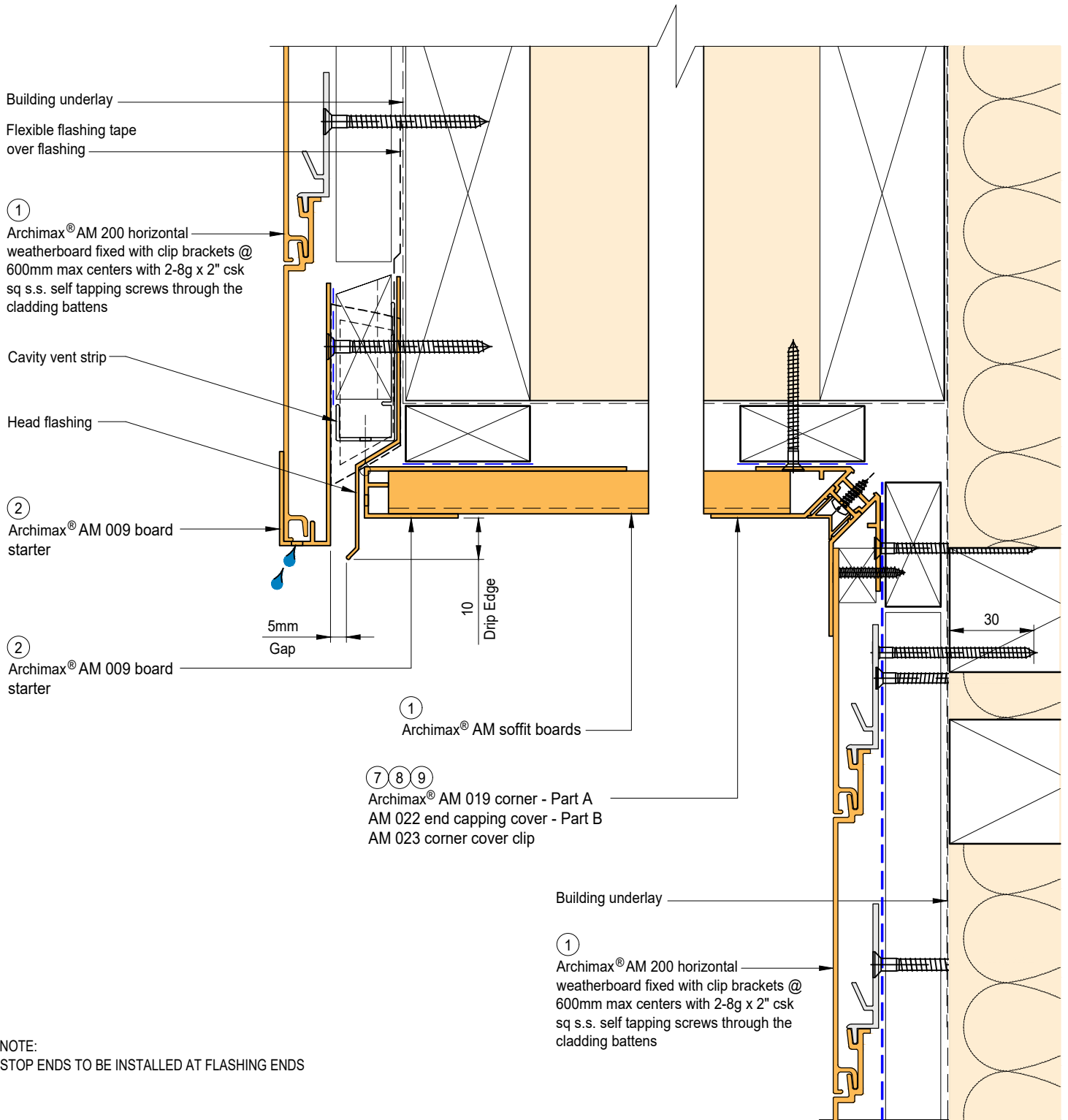
Drawing No. Rev.
 AM-SO-H10 D

This drawing is the copyright of Archimax Limited. Modification of details for job specification requirements must be approved by Archimax Ltd. The building designer is ultimately responsible to ensure all building work is designed and constructed according to building code requirements, best code of practice industry guidelines. All components must be supplied by Archimax. Archimax reserves the right to alter or upgrade details at any time without prior notice.

Scale Date
 1:2 NOV23



 <p>ARCHIMAX ALUMINIUM CLADDING SYSTEM <i>Creating more durable building envelopes</i> www.archimax.co.nz</p>	<p>System AM 200 - HORIZONTAL WEATHERBOARD</p>	<p>Detail ARCHIMAX® FASCIA, SOFFIT & WALL DETAIL</p>	<p>Drawing No. Rev. AM-SO-H11.1 D</p>
	<p>This drawing is the copyright of Archimax Limited. Modification of details for job specification requirements must be approved by Archimax Ltd. The building designer is ultimately responsible to ensure all building work is designed and constructed according to building code requirements, best code of practice industry guidelines. All components must be supplied by Archimax. Archimax reserves the right to alter or upgrade details at any time without prior notice.</p>		<p>Scale Date 1:2 NOV23</p>



ARCHIMAX
ALUMINIUM CLADDING SYSTEM
Creating more durable building envelopes
www.archimax.co.nz

System
AM 200 - HORIZONTAL WEATHERBOARD

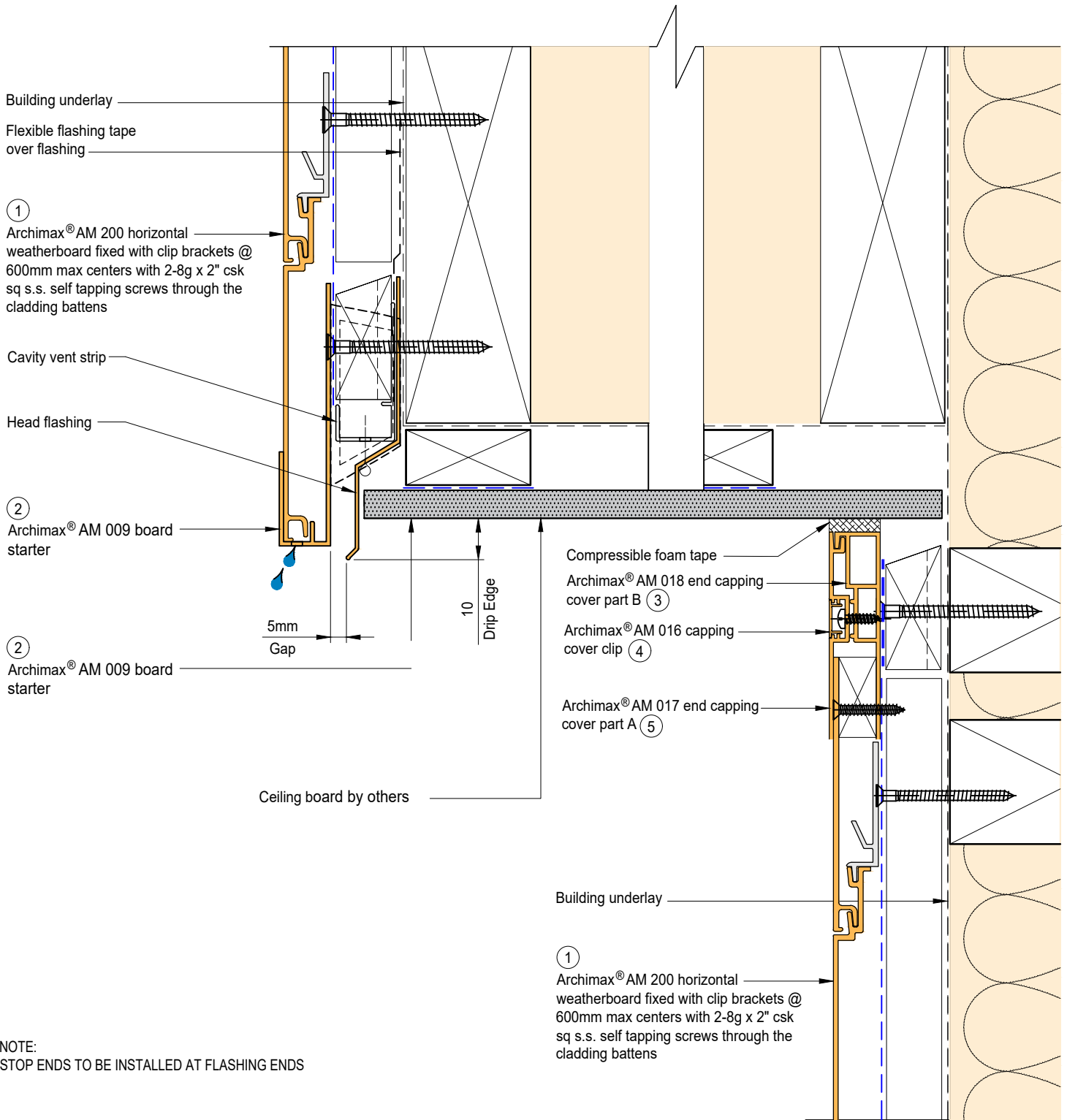
Detail
ARCHIMAX® FASCIA, SOFFIT & WALL DETAIL (90° SOFFIT / WALL) DETAIL


This drawing is the copyright of Archimax Limited. Modification of details for job specification requirements must be approved by Archimax Ltd. The building designer is ultimately responsible to ensure all building work is designed and constructed according to building code requirements, best code of practice industry guidelines. All components must be supplied by Archimax. Archimax reserves the right to alter or upgrade details at any time without prior notice.

Drawing No. Rev.
AM-SO-H11.2 D

Scale Date
1:2 NOV23

Scale Date
1:2 NOV23



 <p>ARCHIMAX ALUMINIUM CLADDING SYSTEM <i>Creating more durable building envelopes</i> www.archimax.co.nz</p>	<p>System AM 200 - HORIZONTAL WEATHERBOARD</p>	<p>Detail ARCHIMAX® FASCIA, BOARD SOFFIT & WALL DETAIL</p>	<p>Drawing No. Rev. AM-SO-H11.3 D</p>	
	<p>This drawing is the copyright of Archimax Limited. Modification of details for job specification requirements must be approved by Archimax Ltd. The building designer is ultimately responsible to ensure all building work is designed and constructed according to building code requirements, best code of practice industry guidelines. All components must be supplied by Archimax. Archimax reserves the right to alter or upgrade details at any time without prior notice.</p>		<p>Scale 1:2</p>	<p>Date NOV23</p>

EXTERIOR

Selected roofing

Flashing & sealed by others

Archimax® AM 018 end capping cover part B (3)

Archimax® AM 016 capping cover clip (4)

Archimax® AM 017 end capping cover part A (5)

Black polyethylene underlay strip isolator (between aluminium & treated timber battens)

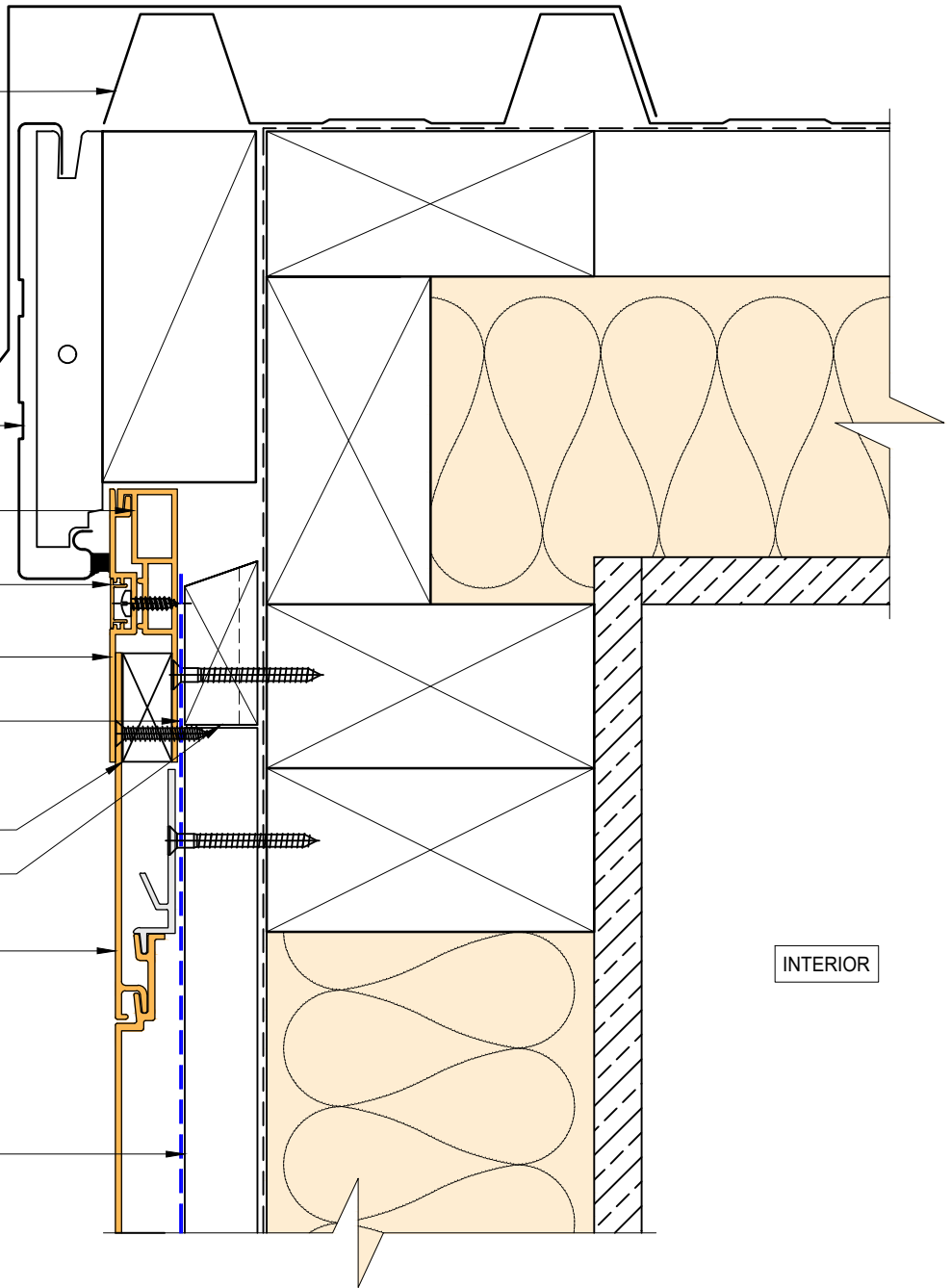
Solid Packer

Horizontal battens

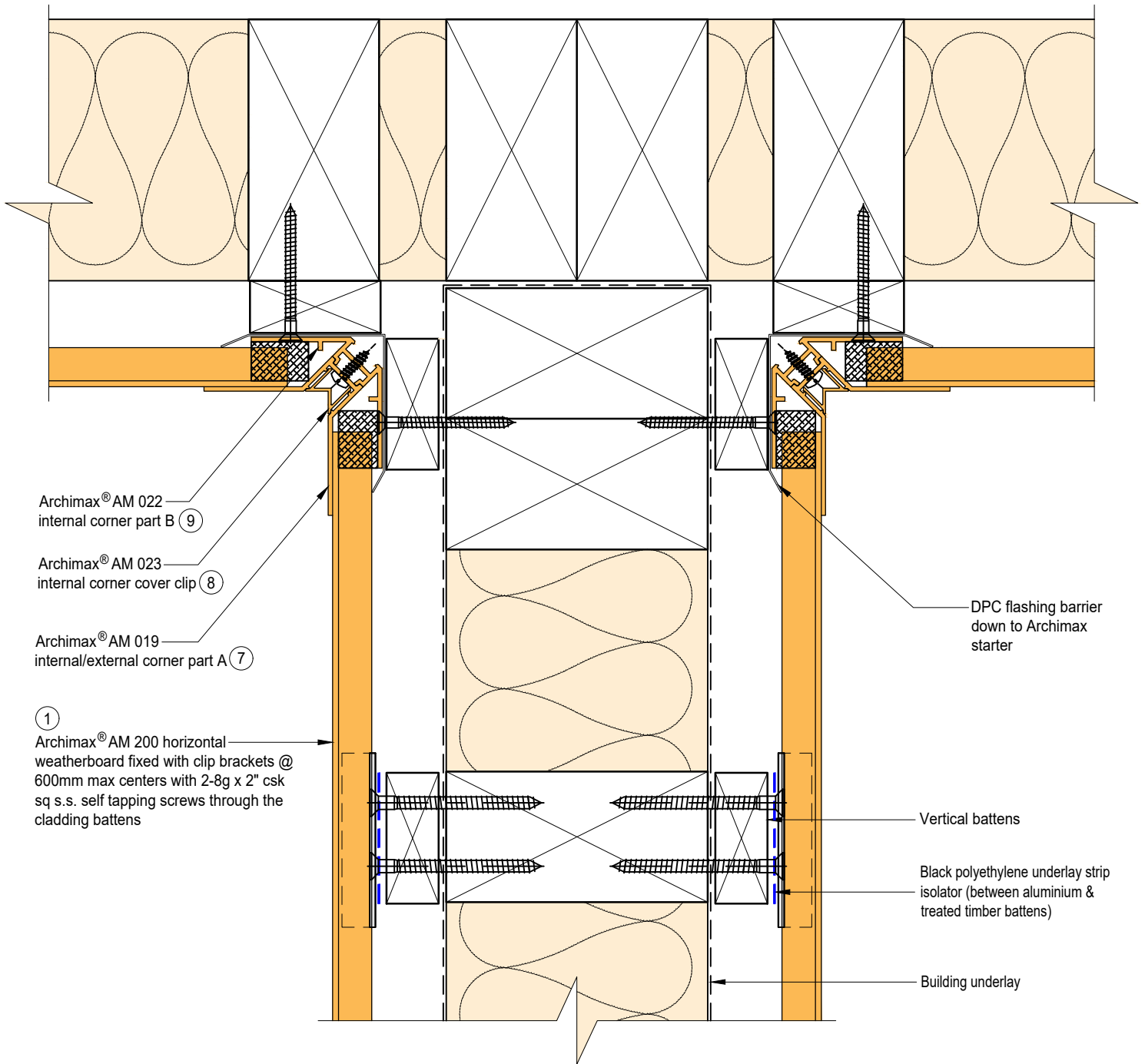
Archimax® AM 200 horizontal weatherboard fixed with clip brackets @ 600mm max centers with 2-8g x 2" csk sq s.s. self tapping screws through the cladding battens (1)

Vertical battens

INTERIOR



BRANZ Appraised
Appraisal No. 1173 [2021]



Archimax® AM 022
internal corner part B (9)

Archimax® AM 023
internal corner cover clip (8)

Archimax® AM 019
internal/external corner part A (7)

(1)
Archimax® AM 200 horizontal
weatherboard fixed with clip brackets @
600mm max centers with 2-8g x 2" csk
sq s.s. self tapping screws through the
cladding battens

DPC flashing barrier
down to Archimax
starter

Vertical battens

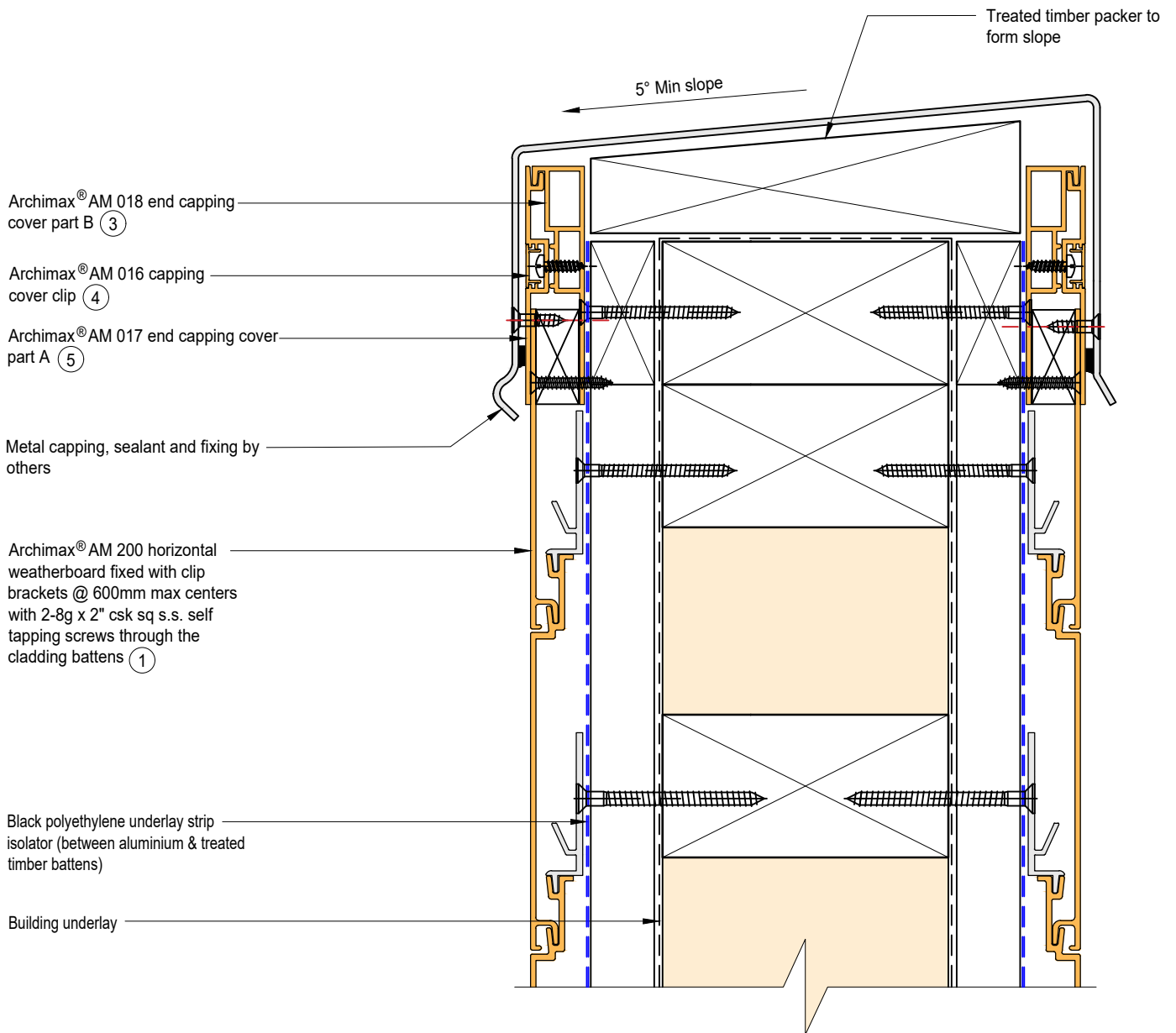
Black polyethylene underlay strip
isolator (between aluminium &
treated timber battens)

Building underlay



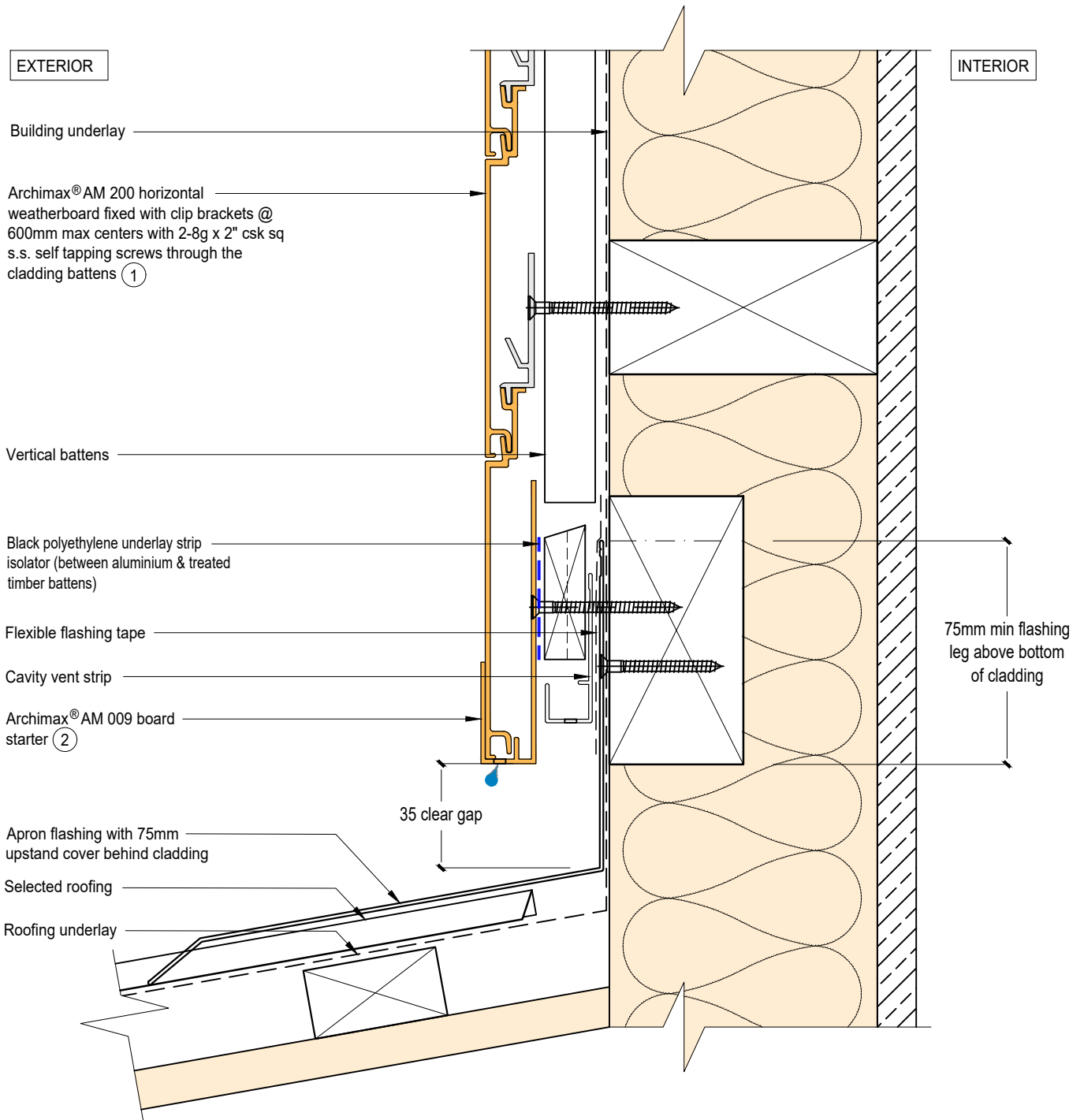
ARCHIMAX
ALUMINIUM CLADDING SYSTEM
Creating more durable building envelopes
www.archimax.co.nz


System AM 200 - HORIZONTAL WEATHERBOARD	Detail ARCHIMAX® INTERNAL CORNER JUNCTION DETAIL	Drawing No. Rev. AM-BJ-H13 D
This drawing is the copyright of Archimax Limited. Modification of details for job specification requirements must be approved by Archimax Ltd. The building designer is ultimately responsible to ensure all building work is designed and constructed according to building code requirements, best code of practice industry guidelines. All components must be supplied by Archimax. Archimax reserves the right to alter or upgrade details at any time without prior notice.		Scale Date 1:2 NOV23

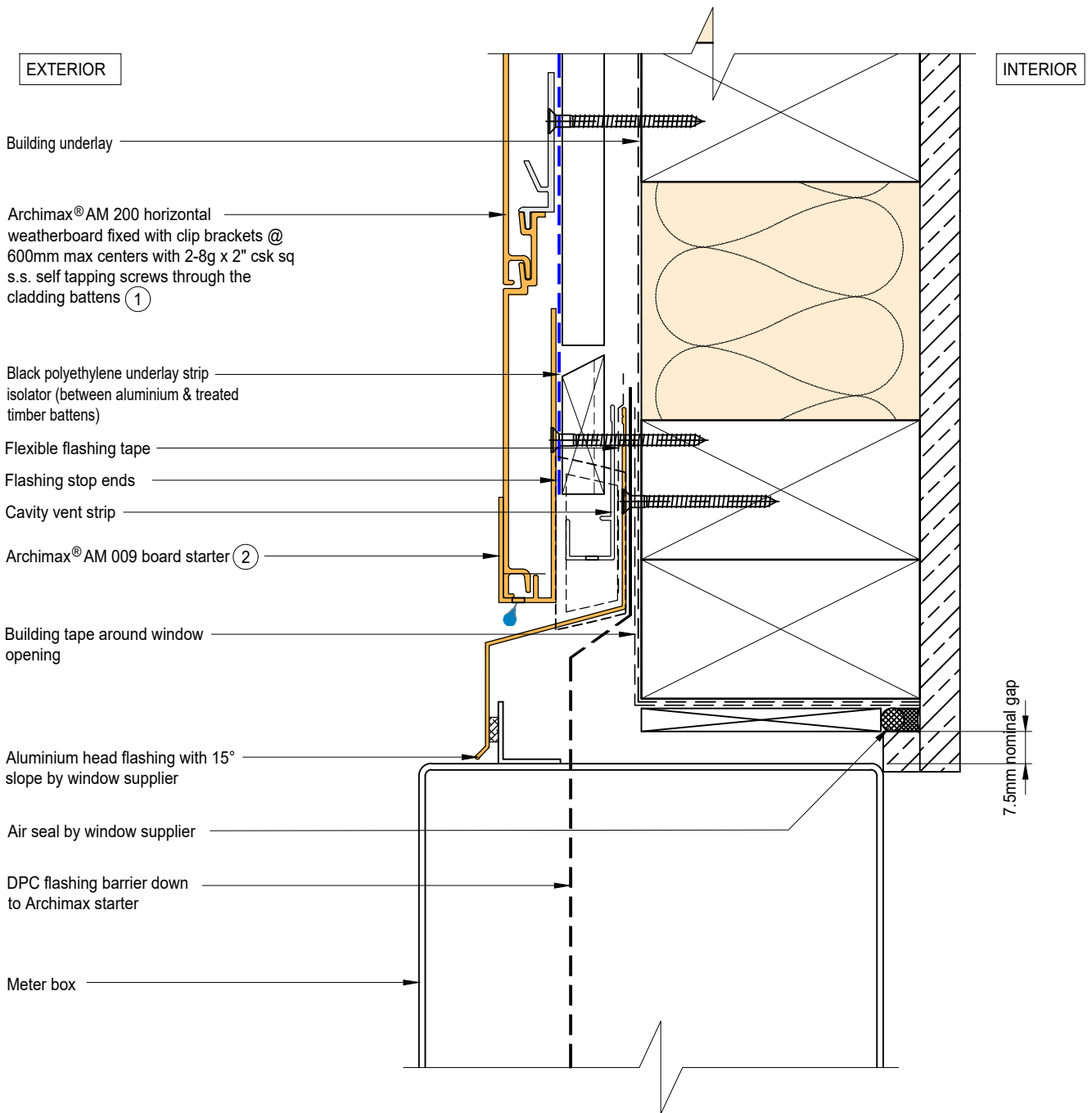



ARCHIMAX
ALUMINIUM CLADDING SYSTEM
Creating more durable building envelopes
www.archimax.co.nz

System AM 200 - HORIZONTAL WEATHERBOARD	Detail ARCHIMAX® PARAPET WITH CAVITY DETAIL	Drawing No. Rev. AM-PAR-H14 D
<small>This drawing is the copyright of Archimax Limited. Modification of details for job specification requirements must be approved by Archimax Ltd. The building designer is ultimately responsible to ensure all building work is designed and constructed according to building code requirements, best code of practice industry guidelines. All components must be supplied by Archimax. Archimax reserves the right to alter or upgrade details at any time without prior notice.</small>		Scale 1:2 Date NOV23




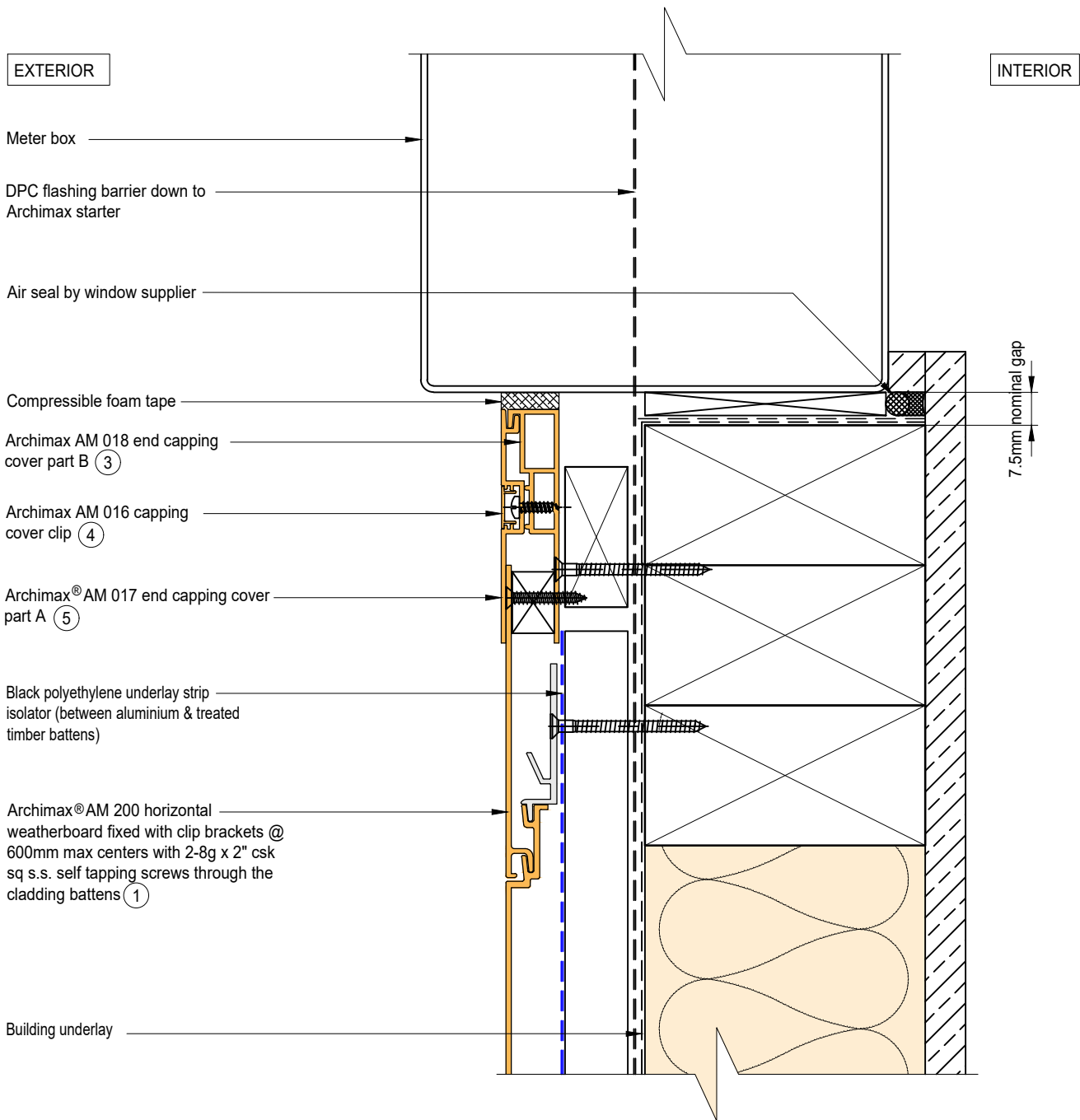
 <p>ARCHIMAX ALUMINIUM CLADDING SYSTEM <i>Creating more durable building envelopes</i> www.archimax.co.nz</p>	<p>System AM 200 - HORIZONTAL WEATHERBOARD</p>	<p>Detail ARCHIMAX® LOWER ROOF WALL JUNCTION DETAIL</p>	<p>Drawing No. Rev. AM-RW-H15 D</p>
	<p>This drawing is the copyright of Archimax Limited. Modification of details for job specification requirements must be approved by Archimax Ltd. The building designer is ultimately responsible to ensure all building work is designed and constructed according to building code requirements, best code of practice industry guidelines. All components must be supplied by Archimax. Archimax reserves the right to alter or upgrade details at any time without prior notice.</p>		<p>Scale Date 1:2 NOV23</p>




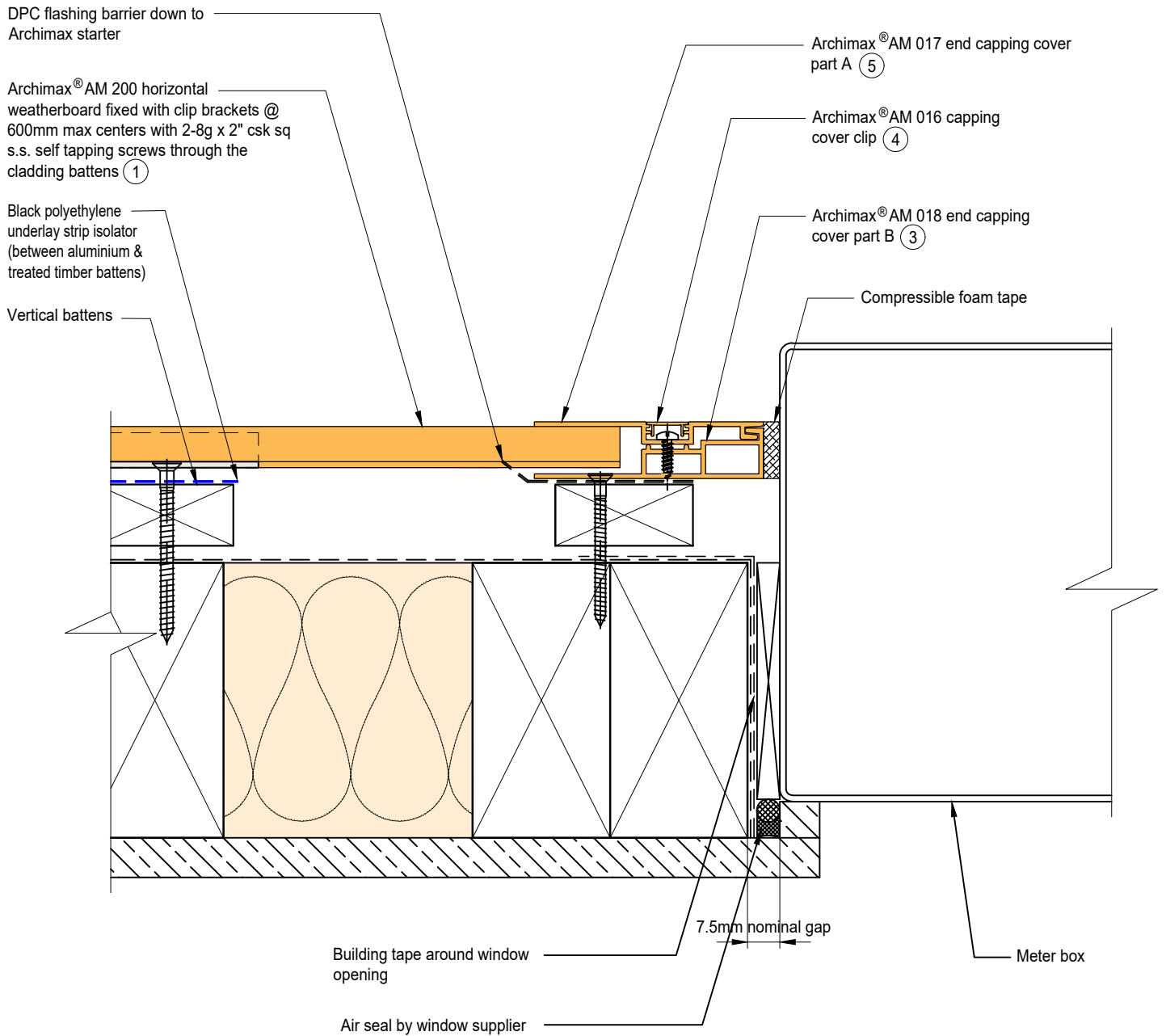
NOTE:
STOP ENDS TO BE INSTALLED AT FLASHING ENDS




 <p>ARCHIMAX ALUMINIUM CLADDING SYSTEM <i>Creating more durable building envelopes</i> www.archimax.co.nz</p>	System AM 200 - HORIZONTAL WEATHERBOARD	Detail ARCHIMAX® METER BOX HEAD DETAIL	Drawing No. Rev. AM-MB-H16 D
	<small>This drawing is the copyright of Archimax Limited. Modification of details for job specification requirements must be approved by Archimax Ltd. The building designer is ultimately responsible to ensure all building work is designed and constructed according to building code requirements, best code of practice industry guidelines. All components must be supplied by Archimax. Archimax reserves the right to alter or upgrade details at any time without prior notice.</small>		Scale Date 1:2 NOV23

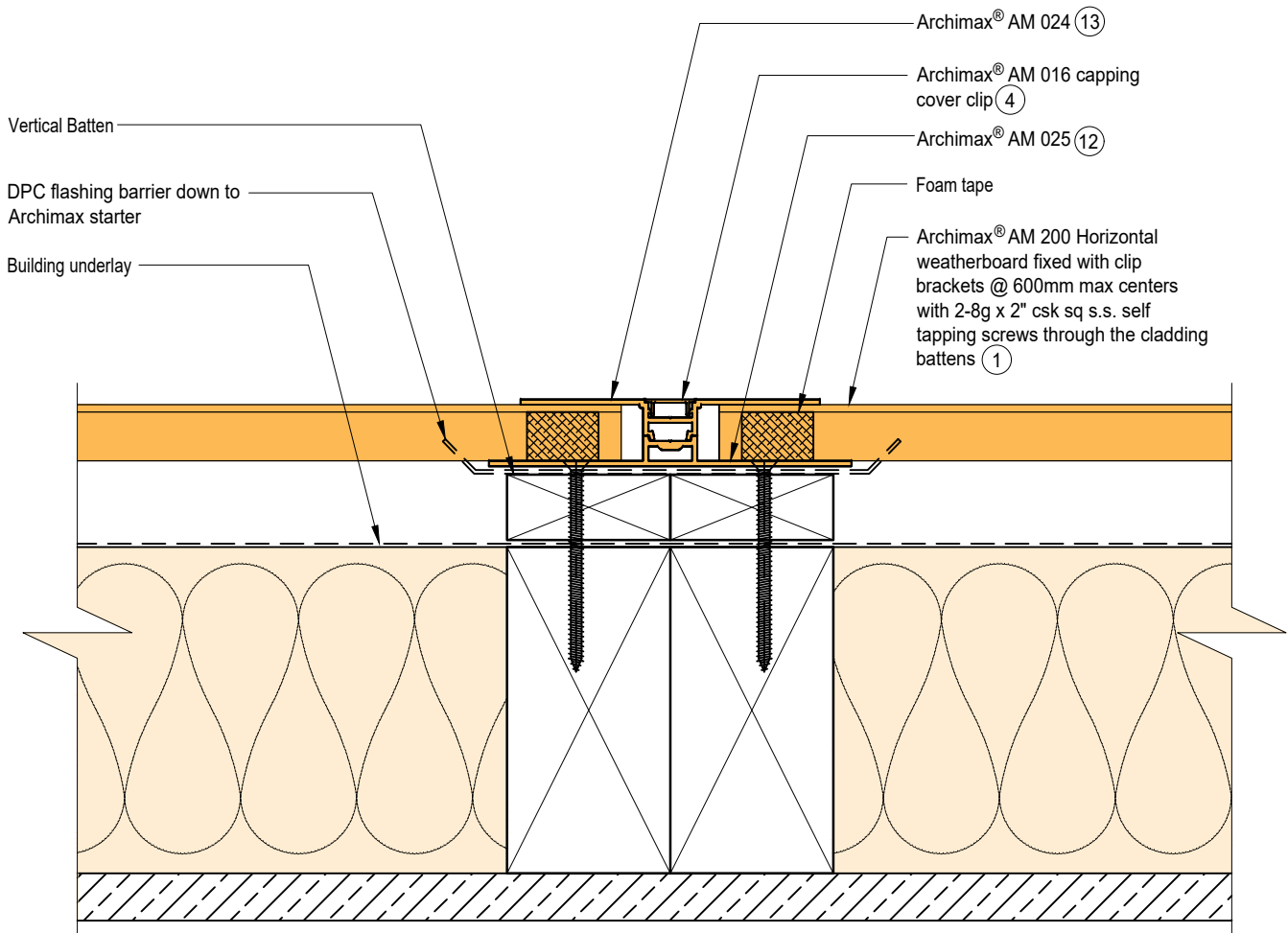


 ARCHIMAX ALUMINIUM CLADDING SYSTEM <i>Creating more durable building envelopes</i> www.archimax.co.nz	System AM 200 - HORIZONTAL WEATHERBOARD	Detail ARCHIMAX® METER BOX SILL DETAIL	Drawing No. Rev. AM-MB-H17 D
	<small>This drawing is the copyright of Archimax Limited. Modification of details for job specification requirements must be approved by Archimax Ltd. The building designer is ultimately responsible to ensure all building work is designed and constructed according to building code requirements, best code of practice industry guidelines. All components must be supplied by Archimax. Archimax reserves the right to alter or upgrade details at any time without prior notice.</small>		Scale Date 1:2 NOV23



 <p>ARCHIMAX ALUMINIUM CLADDING SYSTEM <i>Creating more durable building envelopes</i> www.archimax.co.nz</p>	<p>System AM 200 - HORIZONTAL WEATHERBOARD</p>	<p>Detail ARCHIMAX® METER BOX JAMB DETAIL</p>	<p>Drawing No. Rev. AM-MB-H18 D</p>
	<p>This drawing is the copyright of Archimax Limited. Modification of details for job specification requirements must be approved by Archimax Ltd. The building designer is ultimately responsible to ensure all building work is designed and constructed according to building code requirements, best code of practice industry guidelines. All components must be supplied by Archimax. Archimax reserves the right to alter or upgrade details at any time without prior notice.</p>		<p>Scale Date 1:2 NOV23</p>

EXTERIOR



INTERIOR



ARCHIMAX
ALUMINIUM CLADDING SYSTEM
Creating more durable building envelopes
www.archimax.co.nz

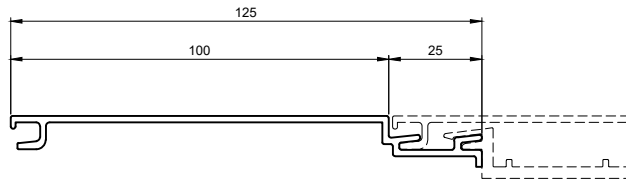
System
AM 200 - HORIZONTAL WEATHERBOARD

Detail
ARCHIMAX® VERTICAL JOINT DETAIL

Drawing No. Rev.
AM-VJ-H19 D

This drawing is the copyright of Archimax Limited. Modification of details for job specification requirements must be approved by Archimax Ltd. The building designer is ultimately responsible to ensure all building work is designed and constructed according to building code requirements, best code of practice industry guidelines. All components must be supplied by Archimax. Archimax reserves the right to alter or upgrade details at any time without prior notice.

Scale Date
1:2 NOV23



①

AM 200 Archimax Horizontal / Vertical Weatherboard

<p>②</p>	<p>③</p>	<p>④</p>	<p>⑤</p>	<p>⑥</p>
<p>AM 009 Board Starter</p>	<p>AM 018 End Capping Part B</p>	<p>AM 016 Jointer / Jamb / Sill Capping Cover Clip</p>	<p>AM 017 End Capping Part A</p>	<p>AM 029 Clip Bracket</p>
<p>⑨</p>	<p>⑧</p>	<p>⑨</p>	<p>⑪</p>	
<p>AM 019 Internal/External Corner Part A</p>	<p>AM 023 Internal Corner Cover Clip</p>	<p>AM 022 Internal Corner Part B</p>	<p>AM 020 External Cover Cover Clip</p>	