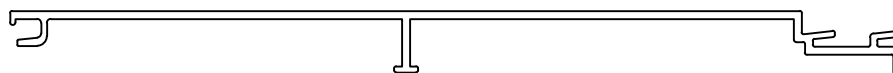


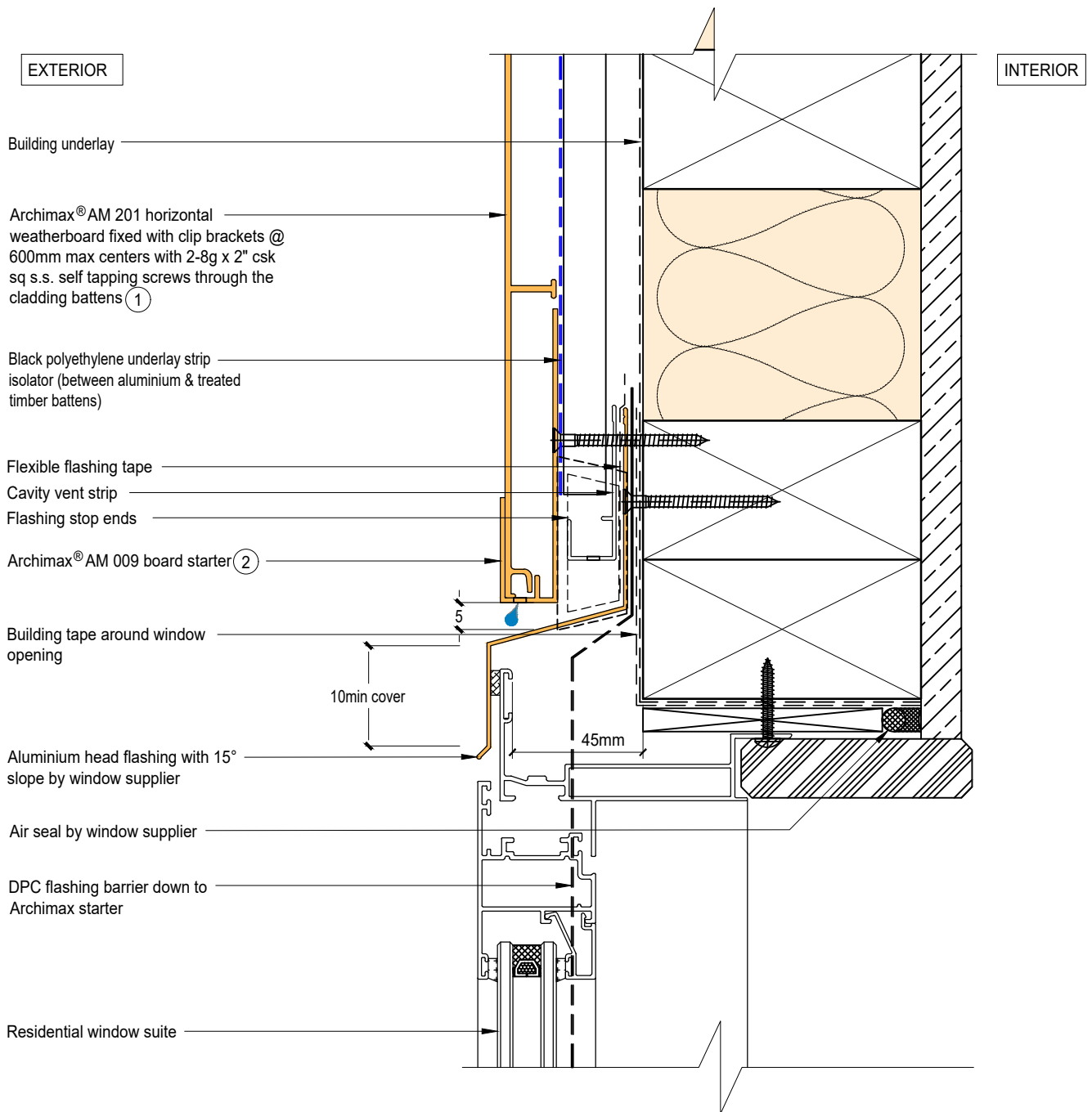


Archimax® Aluminium Cladding System  
AM201 Horizontal Profile - Installation Details

Drawing No.	Rev	Description
AM-WH-H1	D	Archimax® Window Head Detail
AM-WS-H2.1	D	Archimax® Window Sill Detail
AM-WS-H2.2	D	Archimax® Window Sill Detail
AM-WJ-H3	D	Archimax® Window Jamb Detail
AM-EXT-H4	D	Archimax® External Corner Detail
AM-INT-H5	D	Archimax® Internal Corner Detail
AM-CBS-H6.1	D	Archimax® Concrete Floor Board Starter Detail – Timber
AM-CBS-H6.2	D	Archimax® Concrete Floor Board Starter Detail –Fire Wall
AM-HJ-H7	D	Archimax® Horizontal Joint Detail
AM-DJ-H8	D	Archimax® Deck Junction Detail
AM-PP-H9A	D	Archimax® Pipe Penetration Plan View Detail
AM-PP-H9B	D	Archimax® Pipe Penetration Section View Detail
AM-SO-H10	D	Archimax® Soffit Detail
AM-SO-H11.1	D	Archimax® Fascia, Soffit & Wall Detail
AM-SO-H11.2	D	Archimax® Fascia, Soffit & Wall Detail (90° Soffit/Wall)
AM-SO-H11.3	D	Archimax® Fascia, Board Soffit & Wall Detail
AM-SO-H12	D	Archimax® Non-Soffit Detail
AM-BJ-H13	D	Archimax® Internal Corner Junction Detail
AM-PAR-H14	D	Archimax® Parapet with Cavity Detail
AM-RW-H15	D	Archimax® Lower Roof Wall Junction Detail
AM-MB-H16	D	Archimax® Meter Box Head Detail
AM-MB-H17	D	Archimax® Meter Box Sill Detail
AM-MB-H18	D	Archimax® Meter Box Jamb Detail
AM-MB-H19	D	Archimax® Vertical Joint Detail




AM201  
Coverage: 200mm

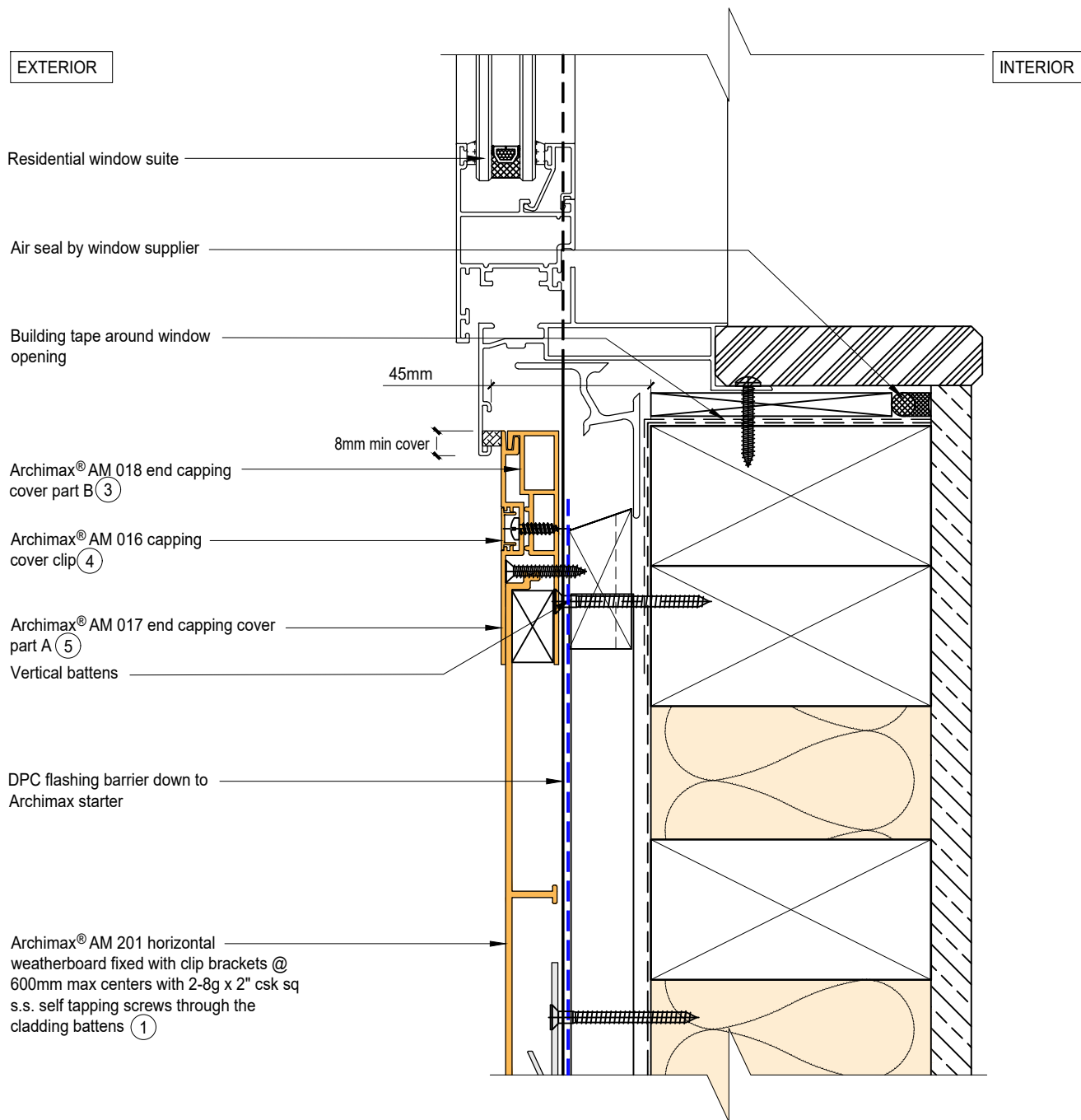


NOTE:

1. Stop ends to be installed at flashing ends
2. Minimum clearance between the AIR BARRIER and WINDOW JOINERY to be 45mm. Window Joinery should not be permanently fixed until cladding been installed.




 <p><b>ARCHIMAX</b> ALUMINIUM CLADDING SYSTEM <i>Creating more durable building envelopes</i> www.archimax.co.nz</p>	<p>System AM 201 - HORIZONTAL WEATHERBOARD</p>	<p>Detail ARCHIMAX® WINDOW HEAD DETAIL</p>	<p>Drawing No. Rev. AM-WH-H1 D</p>
	<p>This drawing is the copyright of Archimax Limited. Modification of details for job specification requirements must be approved by Archimax Ltd. The building designer is ultimately responsible to ensure all building work is designed and constructed according to building code requirements, best code of practice industry guidelines. All components must be supplied by Archimax. Archimax reserves the right to alter or upgrade details at any time without prior notice.</p>		<p>Scale Date 1:2 NOV23</p>

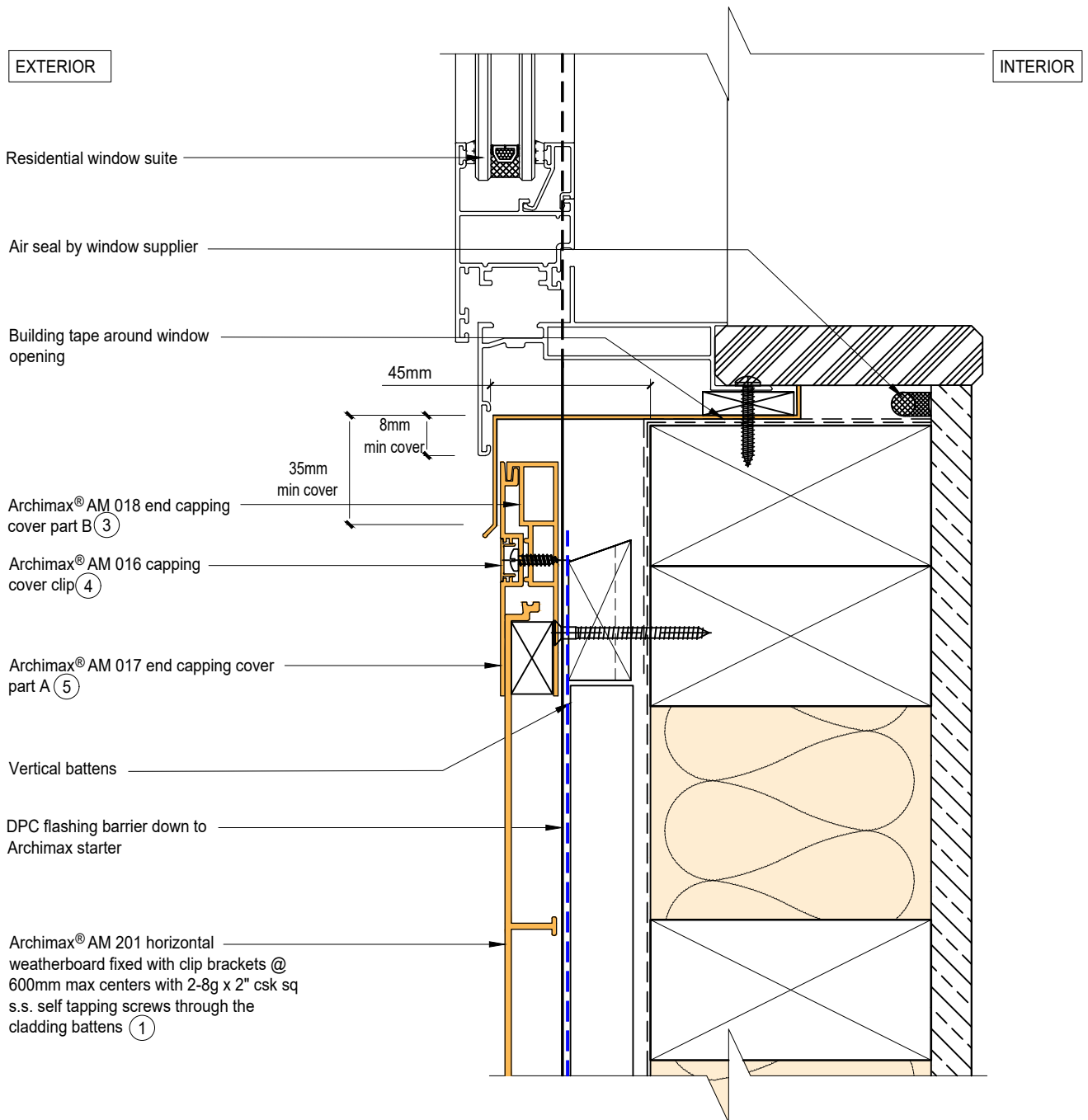


**NOTE:**

1. Minimum clearance between the AIR BARRIER and WINDOW JOINERY to be 45mm. Window Joinery should not be permanently fixed until cladding been installed.




 <p><b>ARCHIMAX</b> ALUMINIUM CLADDING SYSTEM <i>Creating more durable building envelopes</i> www.archimax.co.nz</p>	<p>System AM 201 - HORIZONTAL WEATHERBOARD</p>	<p>Detail ARCHIMAX® WINDOW SILL DETAIL</p>	<p>Drawing No. Rev. AM-WS-H2.2 D</p>	
	<p>This drawing is the copyright of Archimax Limited. Modification of details for job specification requirements must be approved by Archimax Ltd. The building designer is ultimately responsible to ensure all building work is designed and constructed according to building code requirements, best code of practice industry guidelines. All components must be supplied by Archimax. Archimax reserves the right to alter or upgrade details at any time without prior notice.</p>		<p>Scale 1:2</p>	<p>Date NOV23</p>



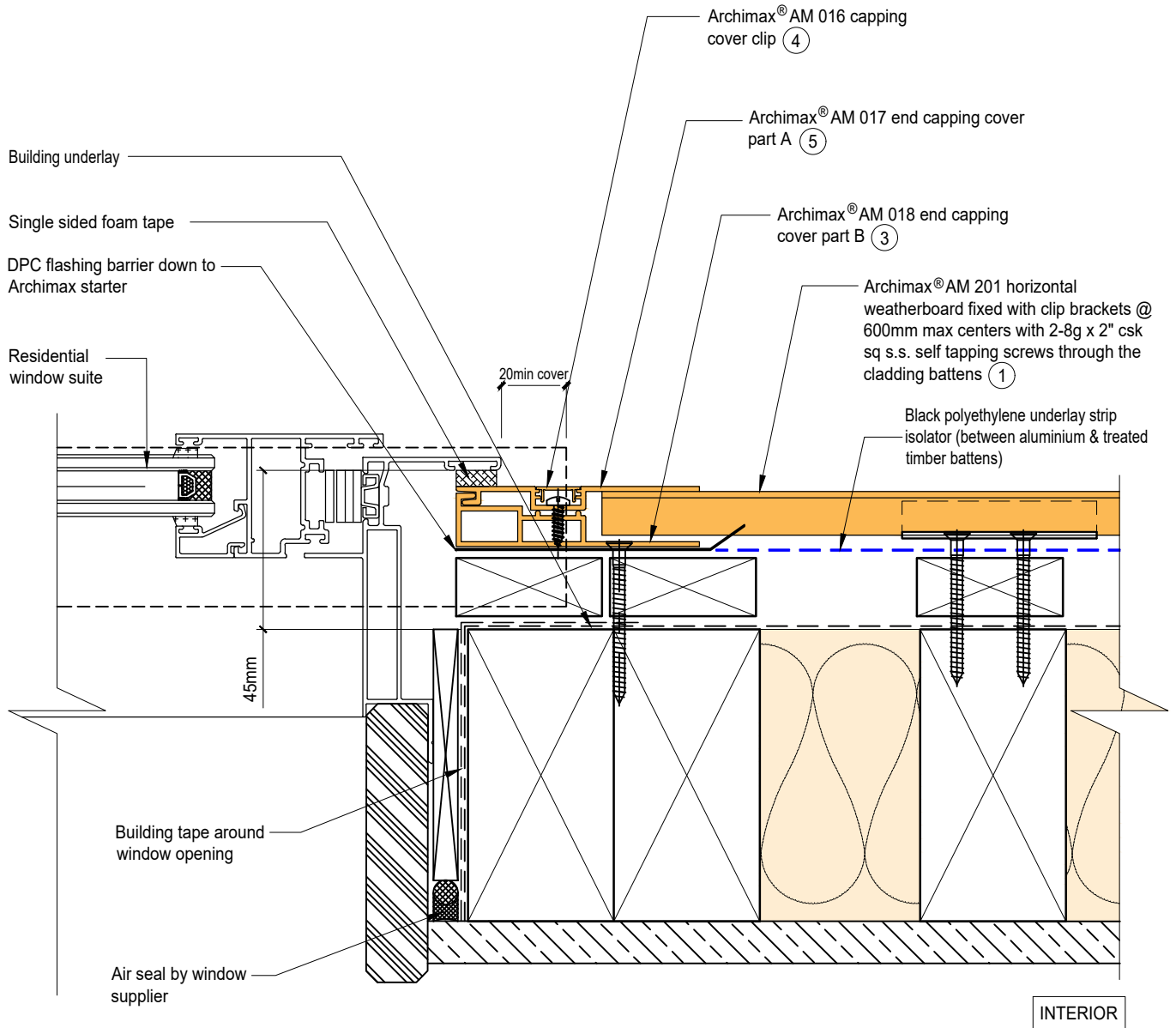
**NOTE:**

1. Minimum clearance between the AIR BARRIER and WINDOW JOINERY to be 45mm. Window Joinery should not be permanently fixed until cladding been installed.



 <p><b>ARCHIMAX</b> ALUMINIUM CLADDING SYSTEM <i>Creating more durable building envelopes</i> www.archimax.co.nz</p>	<p>System AM 201 - HORIZONTAL WEATHERBOARD</p>	<p>Detail ARCHIMAX® WINDOW SILL DETAIL</p>	<p>Drawing No. Rev. AM-WS-H2.2 D</p>
	<p>This drawing is the copyright of Archimax Limited. Modification of details for job specification requirements must be approved by Archimax Ltd. The building designer is ultimately responsible to ensure all building work is designed and constructed according to building code requirements, best code of practice industry guidelines. All components must be supplied by Archimax. Archimax reserves the right to alter or upgrade details at any time without prior notice.</p>		<p>Scale Date 1:2 NOV23</p>


EXTERIOR



NOTE:

1. Minimum clearance between the AIR BARRIER and WINDOW JOINERY to be 45mm. Window Joinery should not be permanently fixed until cladding been installed.



 <p>ARCHIMAX ALUMINIUM CLADDING SYSTEM Creating more durable building envelopes www.archimax.co.nz</p>	<p>System AM 201 - HORIZONTAL WEATHERBOARD</p>	<p>Detail ARCHIMAX® WINDOW JAMB DETAIL</p>	<p>Drawing No. Rev. AM-WJ-H3 D</p>
	<p>This drawing is the copyright of Archimax Limited. Modification of details for job specification requirements must be approved by Archimax Ltd. The building designer is ultimately responsible to ensure all building work is designed and constructed according to building code requirements, best code of practice industry guidelines. All components must be supplied by Archimax. Archimax reserves the right to alter or upgrade details at any time without prior notice.</p>		<p>Scale Date 1:2 NOV23</p>

EXTERIOR

INTERIOR

Building Underlay

Archimax® AM 201 horizontal weatherboard fixed with clip brackets @ 600mm max centers with 2-8g x 2" csk sq s.s. self tapping screws through the cladding battens ①

Black polyethylene underlay strip isolator (between aluminium & treated timber battens)

Vertical battens

Archimax® clip bracket AM 029

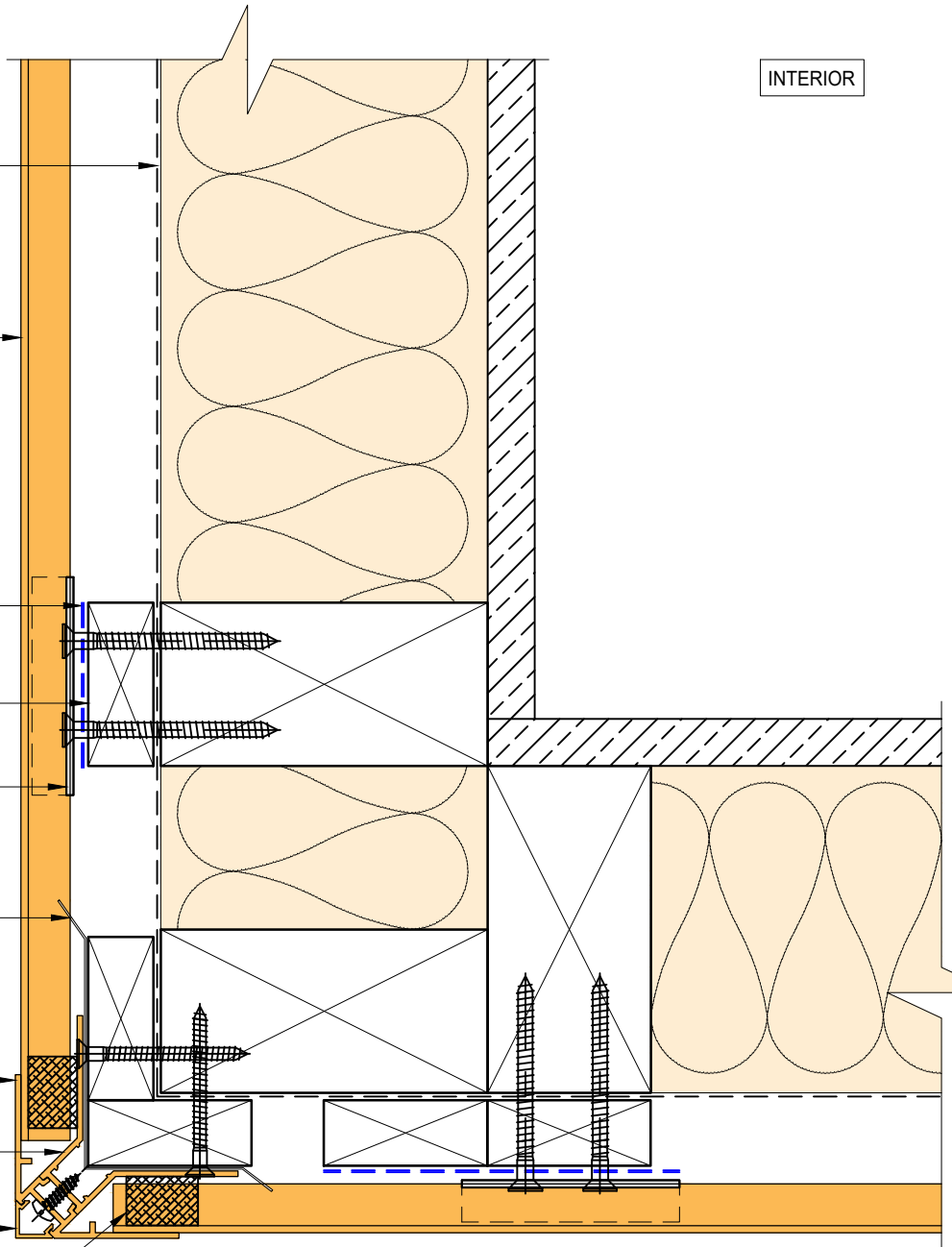
DPC flashing barrier down to Archimax starter

Archimax AM 019 internal/external corner part A ⑦

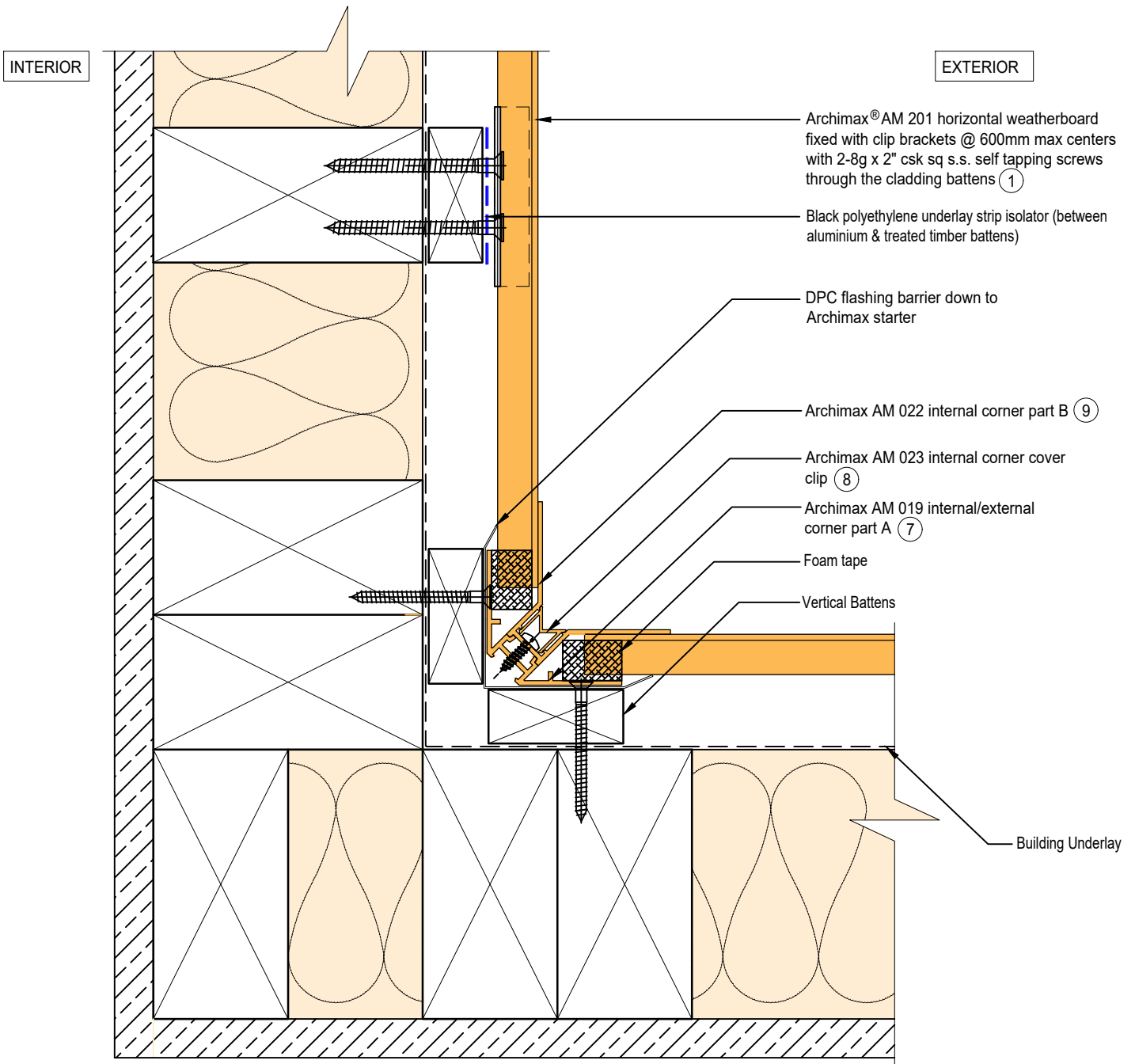
Archimax AM 022 internal corner part B ⑨

Archimax AM 020 external corner cover clip ⑪

Foam Tape



BRANZ Appraised  
Appraisal No. 1173 [2021]




**ARCHIMAX**  
 ALUMINIUM CLADDING SYSTEM  
*Creating more durable building envelopes*  
[www.archimax.co.nz](http://www.archimax.co.nz)

System  
 AM 201 - HORIZONTAL WEATHERBOARD

Detail  
 ARCHIMAX® INTERNAL CORNER DETAIL

Drawing No. Rev.  
 AM-INT-H5 D

This drawing is the copyright of Archimax Limited. Modification of details for job specification requirements must be approved by Archimax Ltd. The building designer is ultimately responsible to ensure all building work is designed and constructed according to building code requirements, best code of practice industry guidelines. All components must be supplied by Archimax. Archimax reserves the right to alter or upgrade details at any time without prior notice.

Scale Date  
 1:2 NOV23

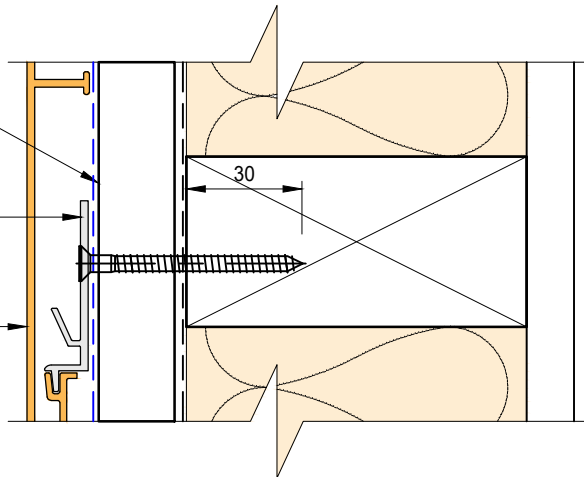
EXTERIOR

INTERIOR

Castellated timber batten (Vertical)

Archimax® clip bracket AM 029

① Archimax® AM 201 horizontal weatherboard fixed with clip brackets @ 600mm max centers with 2-8g x 2" csk sq s.s. self tapping screws through the cladding battens



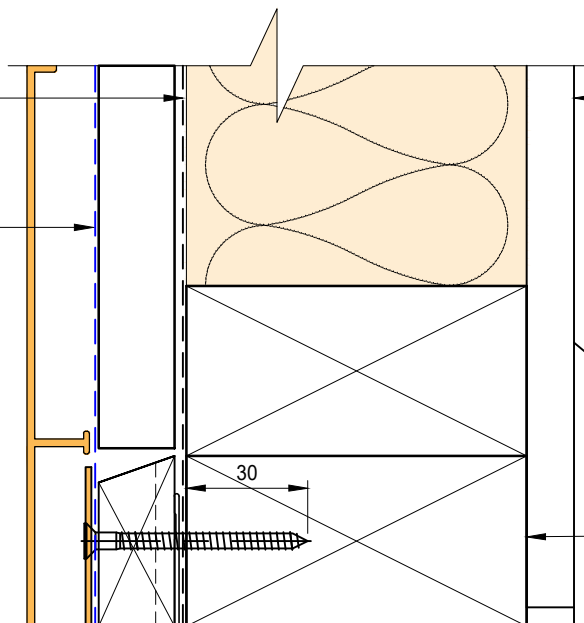
Building underlay

Black polyethylene underlay strip isolator (between aluminium & treated timber battens)

Interior lining

Cavity vent strip (By others)

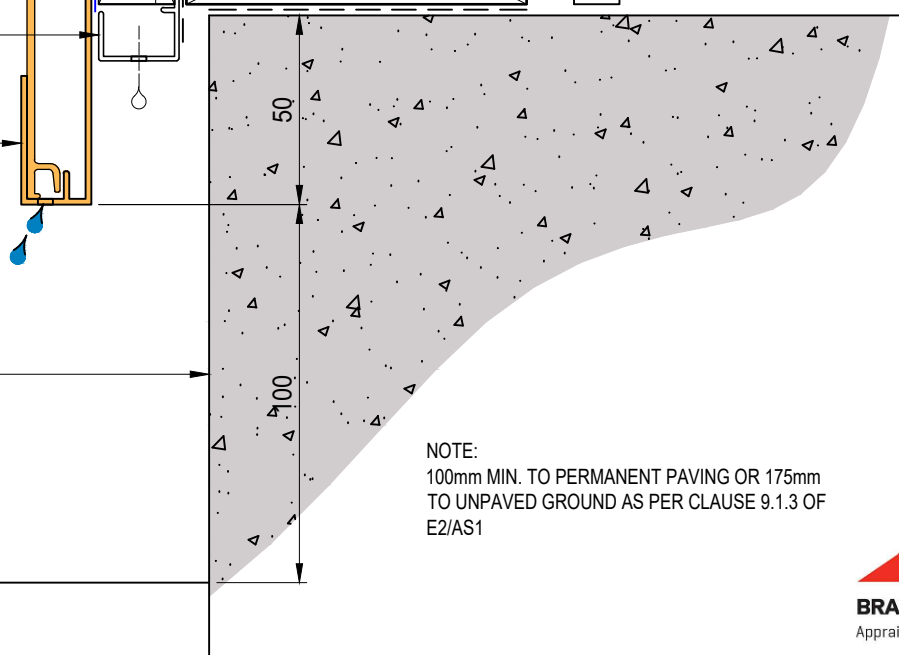
② Archimax® AM 009 board starter



Bottom plate over DPC

Concrete slab or brickwork (By others)

Finish ground level



NOTE:  
100mm MIN. TO PERMANENT PAVING OR 175mm TO UNPAVED GROUND AS PER CLAUSE 9.1.3 OF E2/AS1



System  
AM 201 - HORIZONTAL WEATHERBOARD

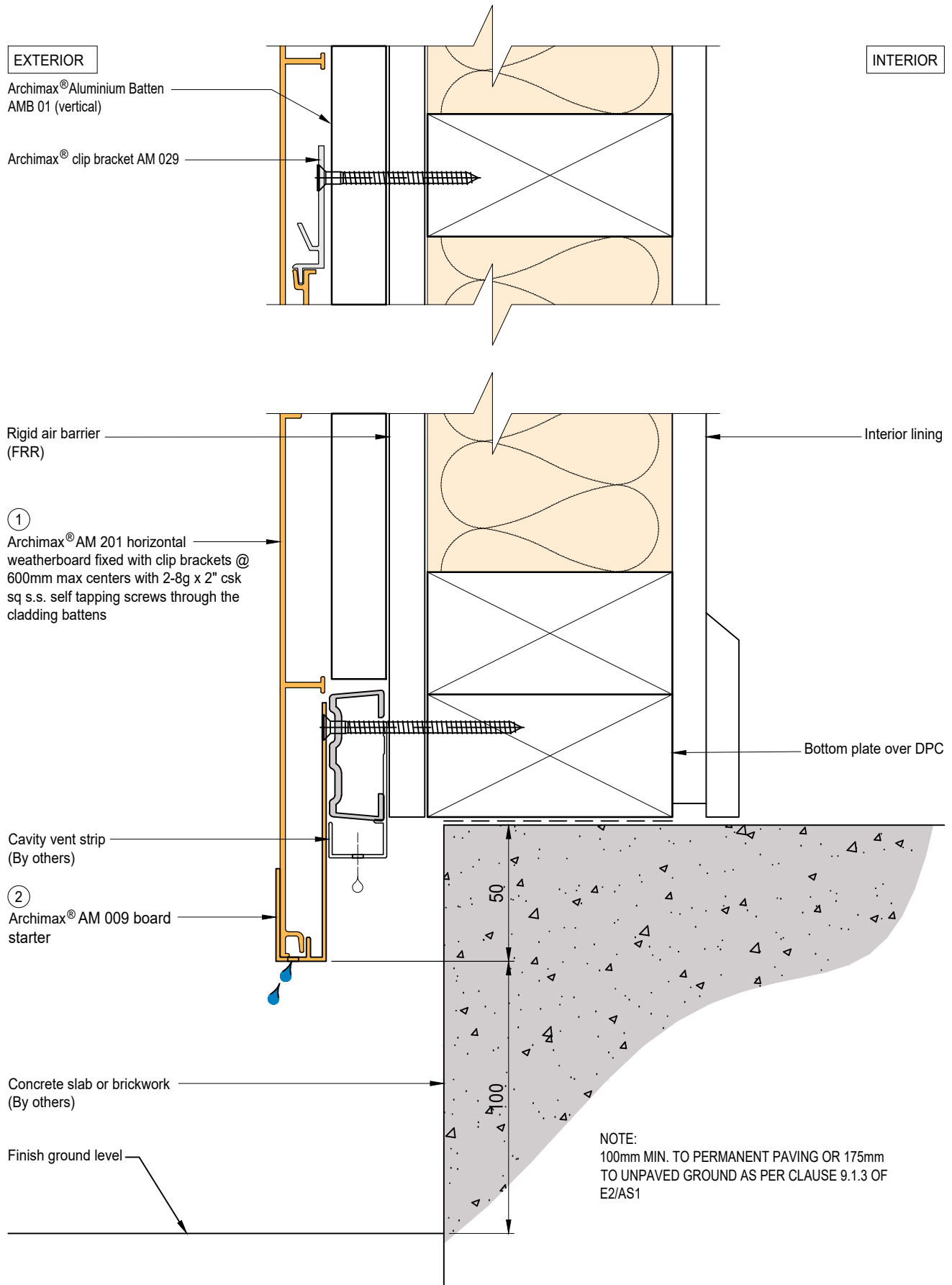
Detail  
ARCHIMAX® CONCRETE FLOOR BOARD STARTER DETAIL - TIMBER

Drawing No. Rev.  
AM-CBS-H6.1 D

This drawing is the copyright of Archimax Limited. Modification of details for job specification requirements must be approved by Archimax Ltd. The building designer is ultimately responsible to ensure all building work is designed and constructed according to building code requirements, best code of practice industry guidelines. All components must be supplied by Archimax. Archimax reserves the right to alter or upgrade details at any time without prior notice.

Scale Date  
1:2 NOV23





EXTERIOR

INTERIOR

Building underlay

Archimax® AM 201 horizontal weatherboard fixed with clip brackets @ 600mm max centers with 2-8g x 2" csk sq s.s. self tapping screws through the cladding battens (1)

Vertical battens

Black polyethylene underlay strip isolator (between aluminium & treated timber battens)

Flexible flashing tape

Cavity vent strip

Archimax AM 009 board starter (2)

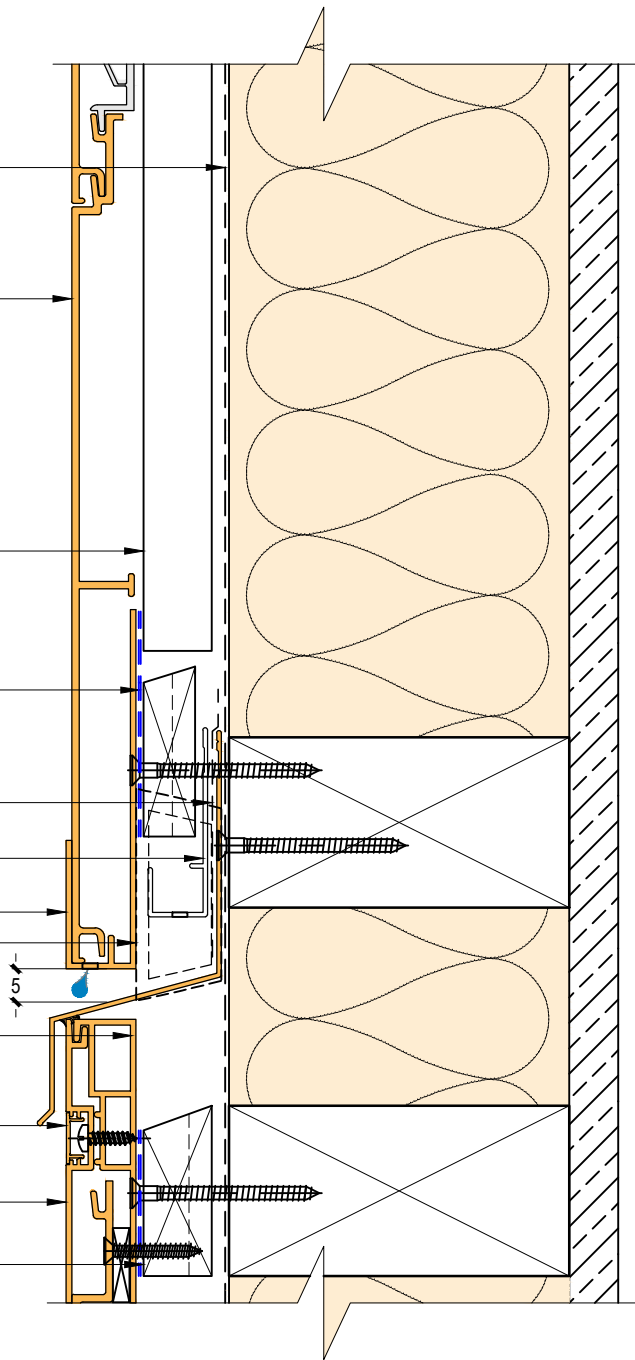
Inter-Storey flashing stop ends

Archimax® AM 018 end capping cover part B (3)

Archimax® AM 016 capping cover clip (4)

Archimax® AM 017 end capping cover part A (5)

Horizontal battens



NOTE:  
STOP ENDS TO BE INSTALLED AT INTER-STOREY FLASHING ENDS



BRANZ Appraised  
Appraisal No. 1173 [2021]



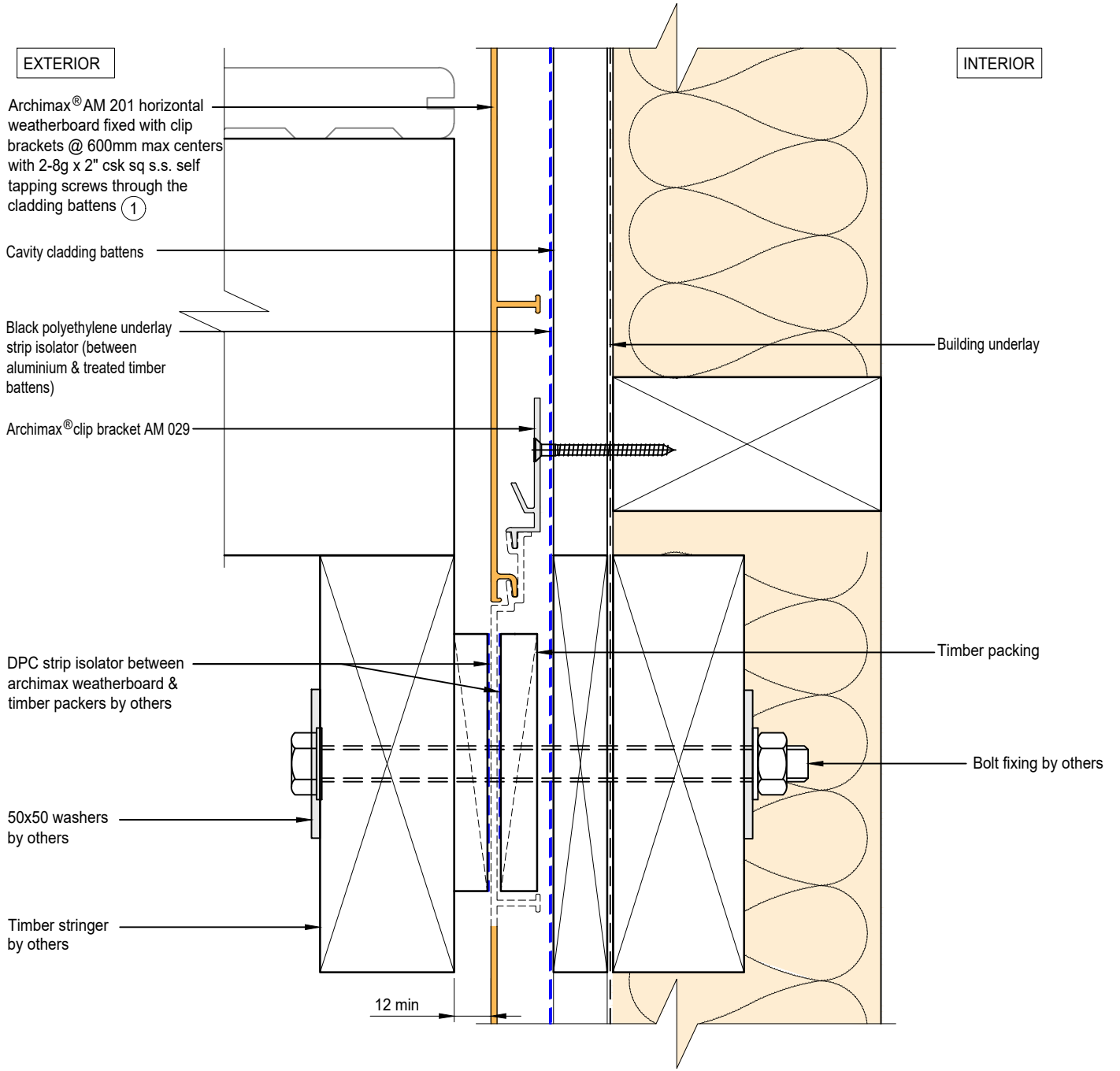
System  
AM 201 - HORIZONTAL WEATHERBOARD


Detail  
ARCHIMAX® HORIZONTAL JOINT DETAIL

Drawing No. Rev.  
AM-HJ-H7 D

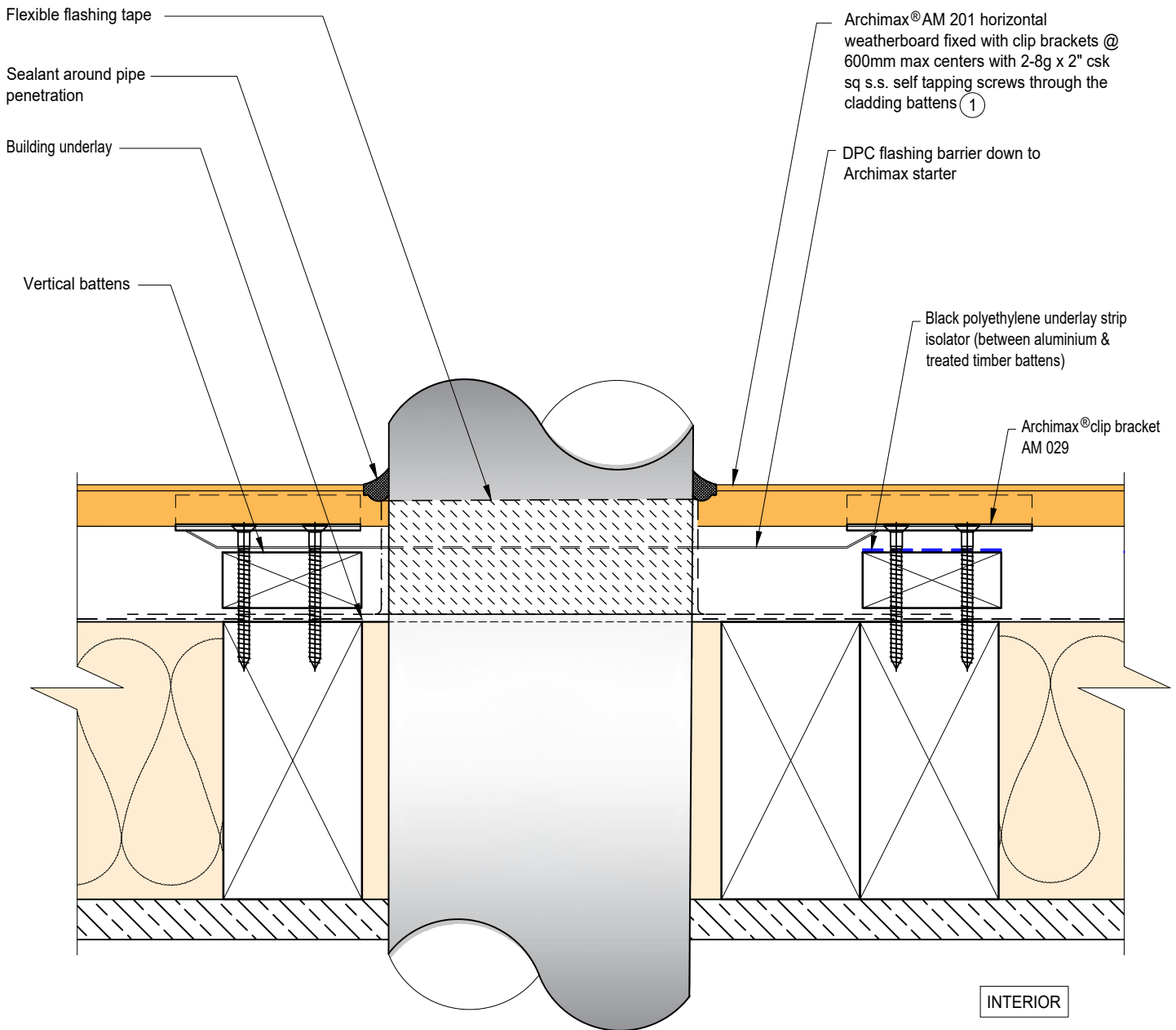
This drawing is the copyright of Archimax Limited. Modification of details for job specification requirements must be approved by Archimax Ltd. The building designer is ultimately responsible to ensure all building work is designed and constructed according to building code requirements, best code of practice industry guidelines. All components must be supplied by Archimax. Archimax reserves the right to alter or upgrade details at any time without prior notice.

Scale Date  
1:2 NOV23



 <p><b>ARCHIMAX</b> ALUMINIUM CLADDING SYSTEM <i>Creating more durable building envelopes</i> www.archimax.co.nz</p>	<p>System AM 201 - HORIZONTAL WEATHERBOARD</p>	<p>Detail ARCHIMAX® DECK JUNCTION DETAIL</p>	<p>Drawing No. Rev. AM-DJ-H8 D</p>
	<p>This drawing is the copyright of Archimax Limited. Modification of details for job specification requirements must be approved by Archimax Ltd. The building designer is ultimately responsible to ensure all building work is designed and constructed according to building code requirements, best code of practice industry guidelines. All components must be supplied by Archimax. Archimax reserves the right to alter or upgrade details at any time without prior notice.</p>		<p>Scale Date 1:2 NOV23</p>

EXTERIOR



INTERIOR



**BRANZ Appraised**  
Appraisal No. 1173 [2021]

EXTERIOR

INTERIOR

Archimax® AM 201 horizontal weatherboard fixed with clip brackets @ 600mm max centers with 2-8g x 2" csk sq s.s. self tapping screws through the cladding battens ①

Archimax® clip bracket AM 029

Vertical battens

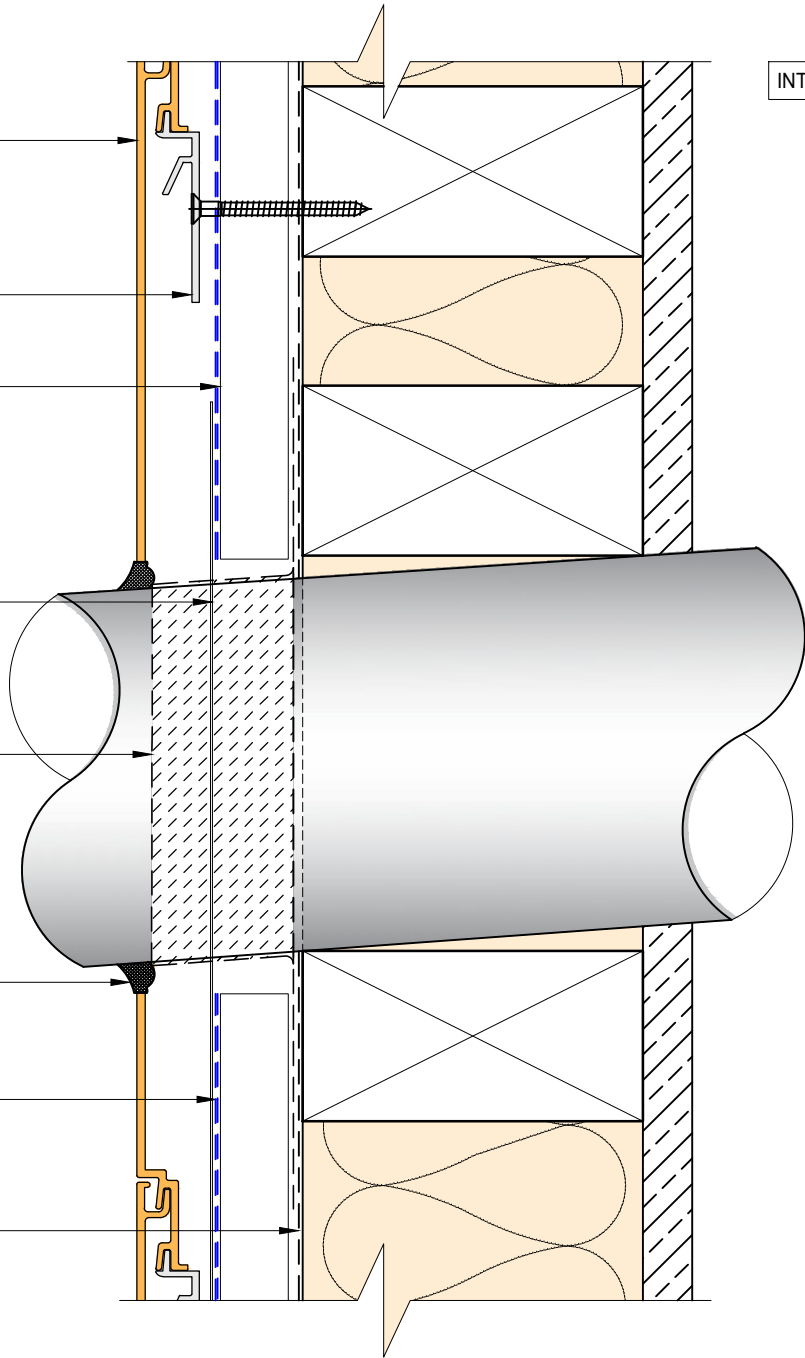
DPC flashing barrier down to Archimax starter

Flexible flashing tape

Sealant around pipe penetration

Black polyethylene underlay strip isolator (between aluminium & treated timber battens)

Building underlay



BRANZ Appraised  
Appraisal No. 1173 [2021]



System  
AM 201 - HORIZONTAL  
WEATHERBOARD

Detail  
ARCHIMAX® PIPE PENETRATION -  
SECTION VIEW DETAIL

Drawing No. Rev.  
AM-PP-H9b D

This drawing is the copyright of Archimax Limited. Modification of details for job specification requirements must be approved by Archimax Ltd. The building designer is ultimately responsible to ensure all building work is designed and constructed according to building code requirements, best code of practice industry guidelines. All components must be supplied by Archimax. Archimax reserves the right to alter or upgrade details at any time without prior notice.

Scale Date  
1:2 NOV23

EXTERIOR

INTERIOR

Compressible foam tape

Archimax® AM 018 end capping cover part B (3)

Archimax® AM 016 capping cover clip (4)

Archimax® AM 017 end capping cover part A (5)

Solid packer

Horizontal battens

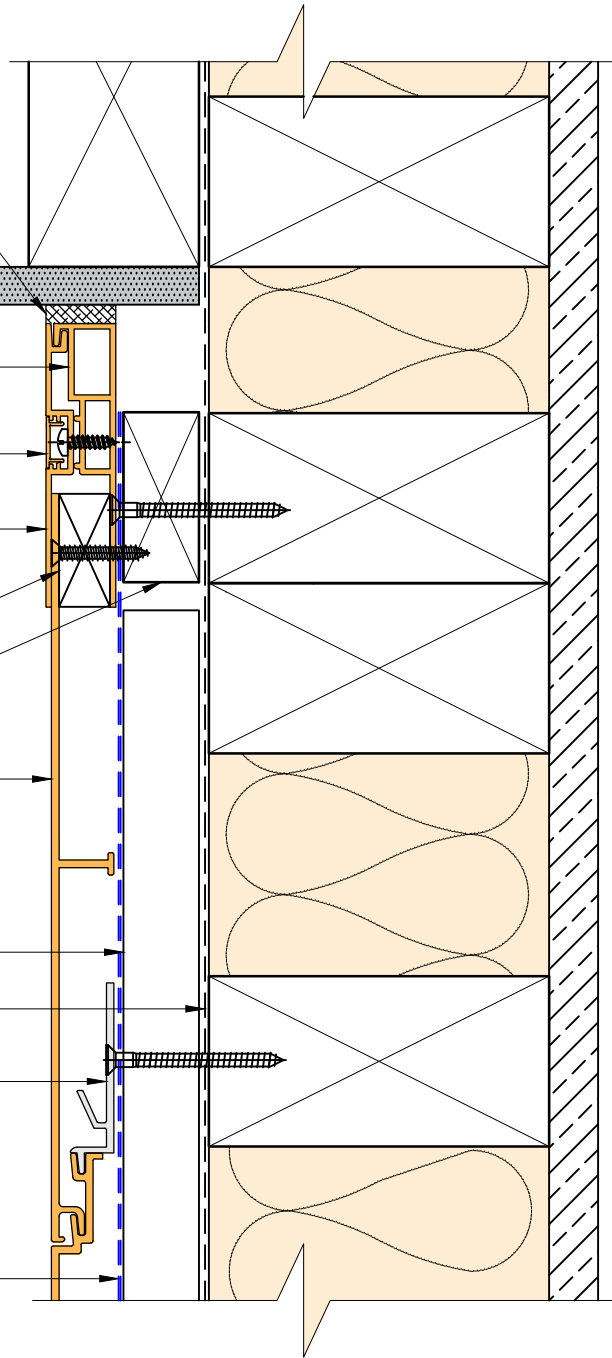
Archimax® AM 201 horizontal weatherboard fixed with clip brackets @ 600mm max centers with 2-8g x 2" csk sq s.s. self tapping screws through the cladding battens (1)

Vertical battens

Building underlay

Archimax® clip bracket AM 029

Black polyethylene underlay strip isolator (between aluminium & treated timber battens)



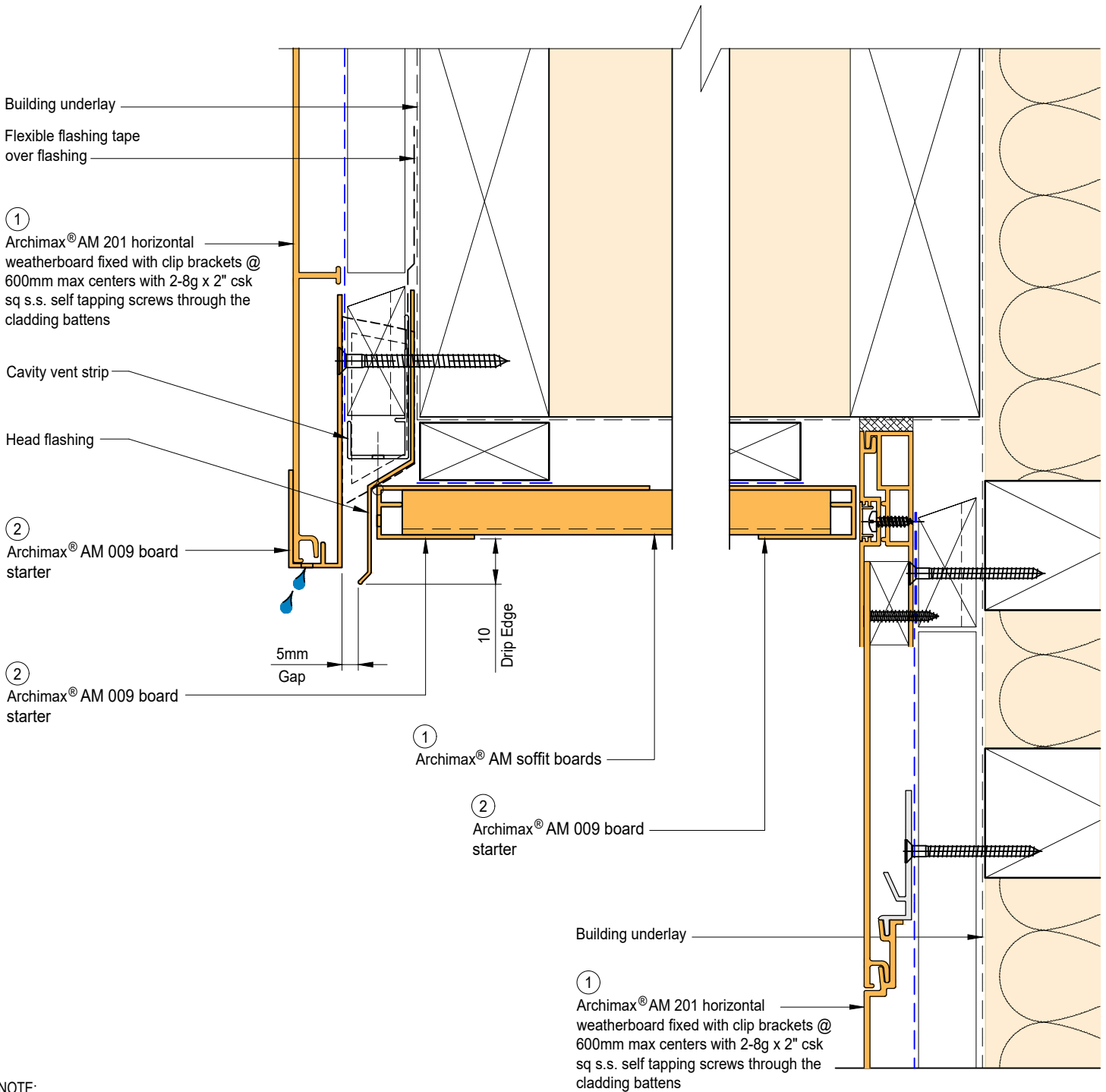
System  
AM 201 - HORIZONTAL WEATHERBOARD

Detail  
ARCHIMAX® SOFFIT DETAIL

Drawing No. Rev.  
AM-SO-H10 D

This drawing is the copyright of Archimax Limited. Modification of details for job specification requirements must be approved by Archimax Ltd. The building designer is ultimately responsible to ensure all building work is designed and constructed according to building code requirements, best code of practice industry guidelines. All components must be supplied by Archimax. Archimax reserves the right to alter or upgrade details at any time without prior notice.

Scale Date  
1:2 NOV23



NOTE:  
STOP ENDS TO BE INSTALLED AT FLASHING ENDS



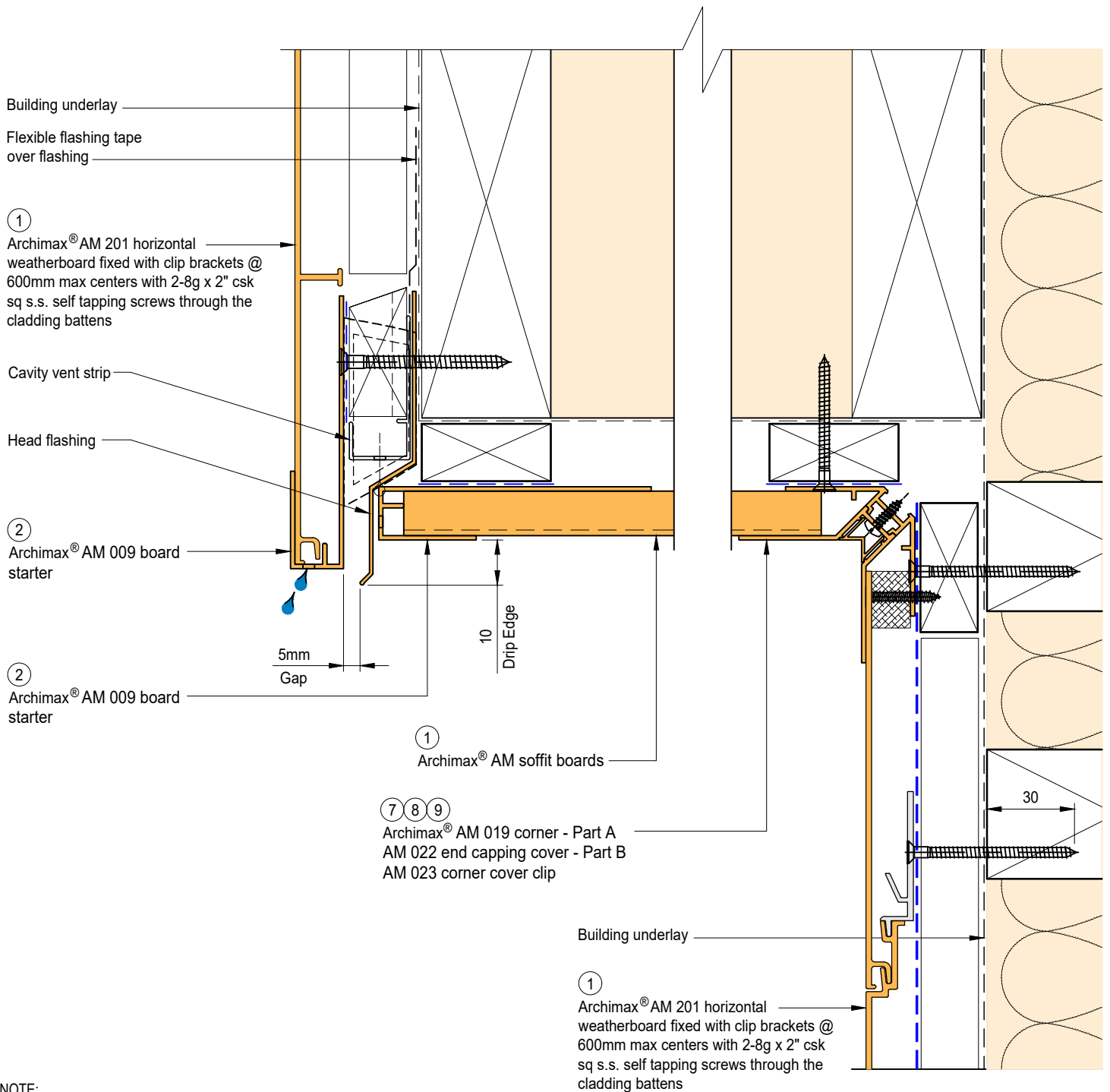
System  
AM 201 - HORIZONTAL WEATHERBOARD


Detail  
ARCHIMAX® FASCIA, SOFFIT & WALL DETAIL

Drawing No. Rev.  
AM-SO-H11.1 D

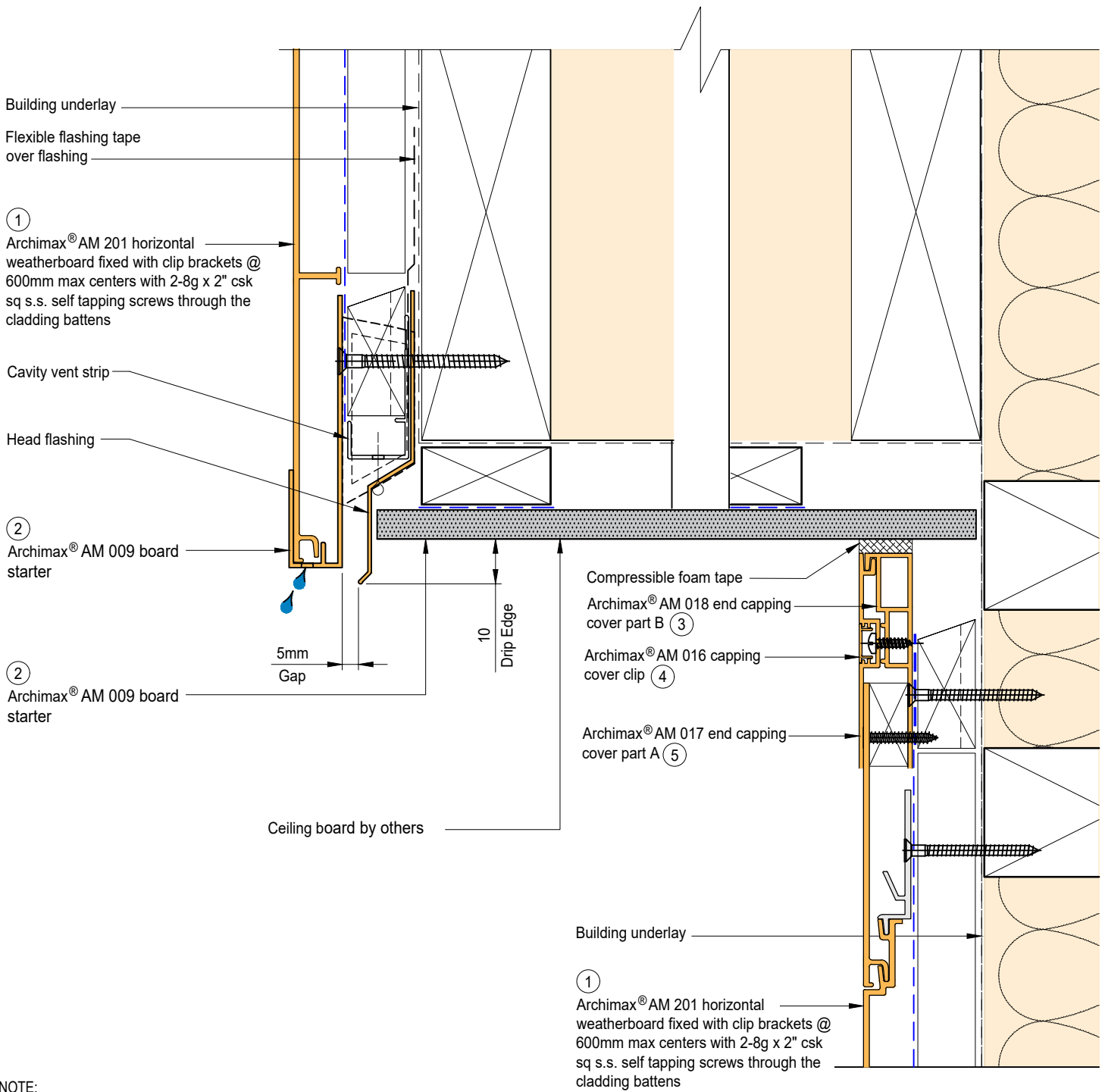
This drawing is the copyright of Archimax Limited. Modification of details for job specification requirements must be approved by Archimax Ltd. The building designer is ultimately responsible to ensure all building work is designed and constructed according to building code requirements, best code of practice industry guidelines. All components must be supplied by Archimax. Archimax reserves the right to alter or upgrade details at any time without prior notice.

Scale Date  
1:2 NOV23




 <p><b>ARCHIMAX</b> ALUMINIUM CLADDING SYSTEM <i>Creating more durable building envelopes</i> www.archimax.co.nz</p>	<p>System AM 201 - HORIZONTAL WEATHERBOARD</p>	<p>Detail ARCHIMAX® FASCIA, SOFFIT &amp; WALL DETAIL (90° SOFFIT / WALL) DETAIL</p>	<p>Drawing No. Rev. AM-SO-H11.2 D</p>	
	<p>This drawing is the copyright of Archimax Limited. Modification of details for job specification requirements must be approved by Archimax Ltd. The building designer is ultimately responsible to ensure all building work is designed and constructed according to building code requirements, best code of practice industry guidelines. All components must be supplied by Archimax. Archimax reserves the right to alter or upgrade details at any time without prior notice.</p>		<p>Scale 1:2</p>	<p>Date NOV23</p>





NOTE:  
STOP ENDS TO BE INSTALLED AT FLASHING ENDS



 <p><b>ARCHIMAX</b> ALUMINIUM CLADDING SYSTEM <i>Creating more durable building envelopes</i> www.archimax.co.nz</p>	<p>System AM 201 - HORIZONTAL WEATHERBOARD</p>	<p>Detail ARCHIMAX® FASCIA, BOARD SOFFIT &amp; WALL DETAIL</p>	<p>Drawing No. Rev. AM-SO-H11.3 D</p>	
	<p>This drawing is the copyright of Archimax Limited. Modification of details for job specification requirements must be approved by Archimax Ltd. The building designer is ultimately responsible to ensure all building work is designed and constructed according to building code requirements, best code of practice industry guidelines. All components must be supplied by Archimax. Archimax reserves the right to alter or upgrade details at any time without prior notice.</p>		<p>Scale 1:2</p>	<p>Date NOV23</p>

EXTERIOR

Selected roofing

Flashing & sealed by others

Archimax® AM 018 end capping cover part B (3)

Archimax® AM 016 capping cover clip (4)

Archimax® AM 017 end capping cover part A (5)

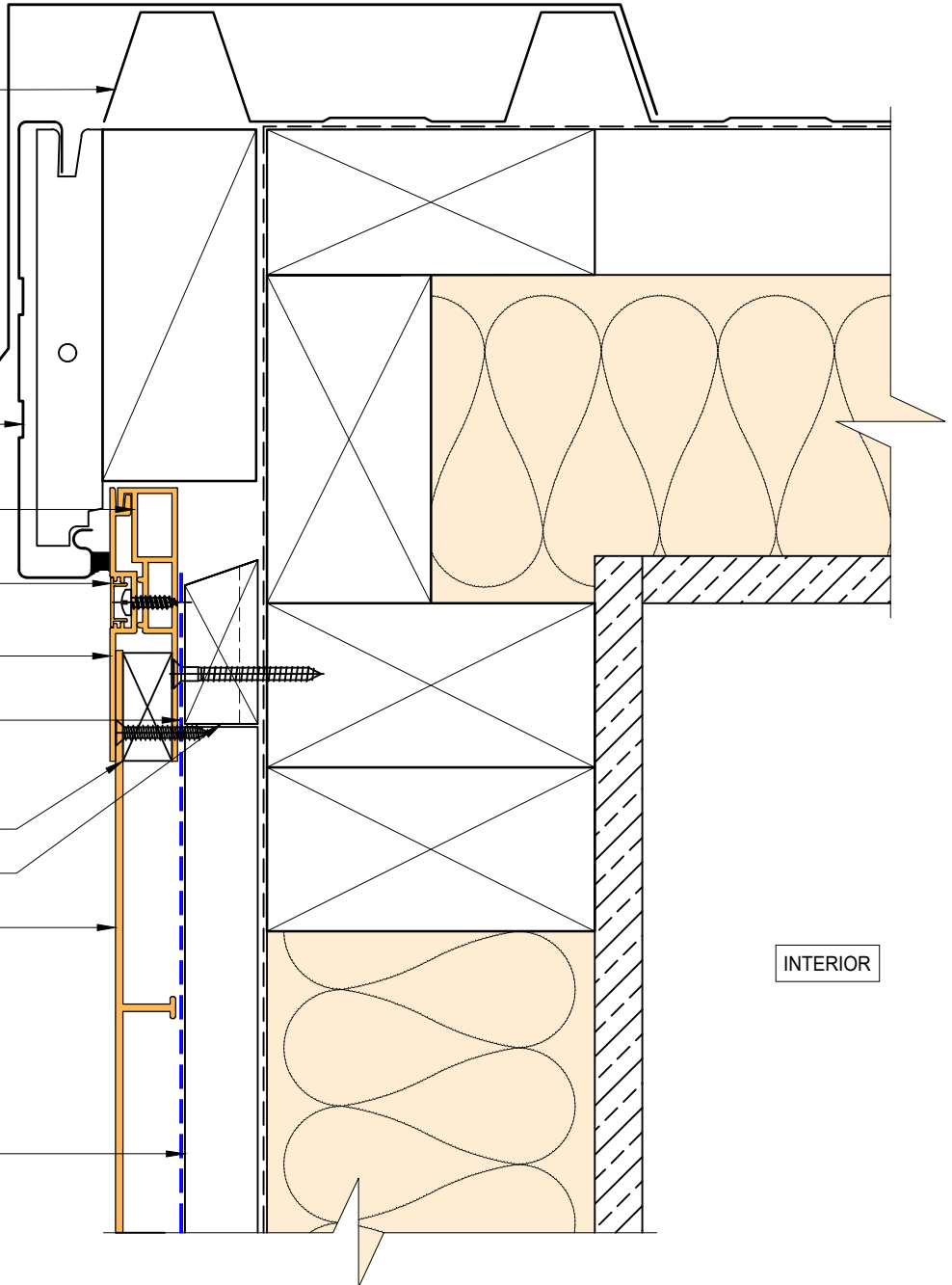
Black polyethylene underlay strip isolator (between aluminium & treated timber battens)

Solid packer

Horizontal battens

Archimax® AM 201 horizontal weatherboard fixed with clip brackets @ 600mm max centers with 2-8g x 2" csk sq s.s. self tapping screws through the cladding battens (1)

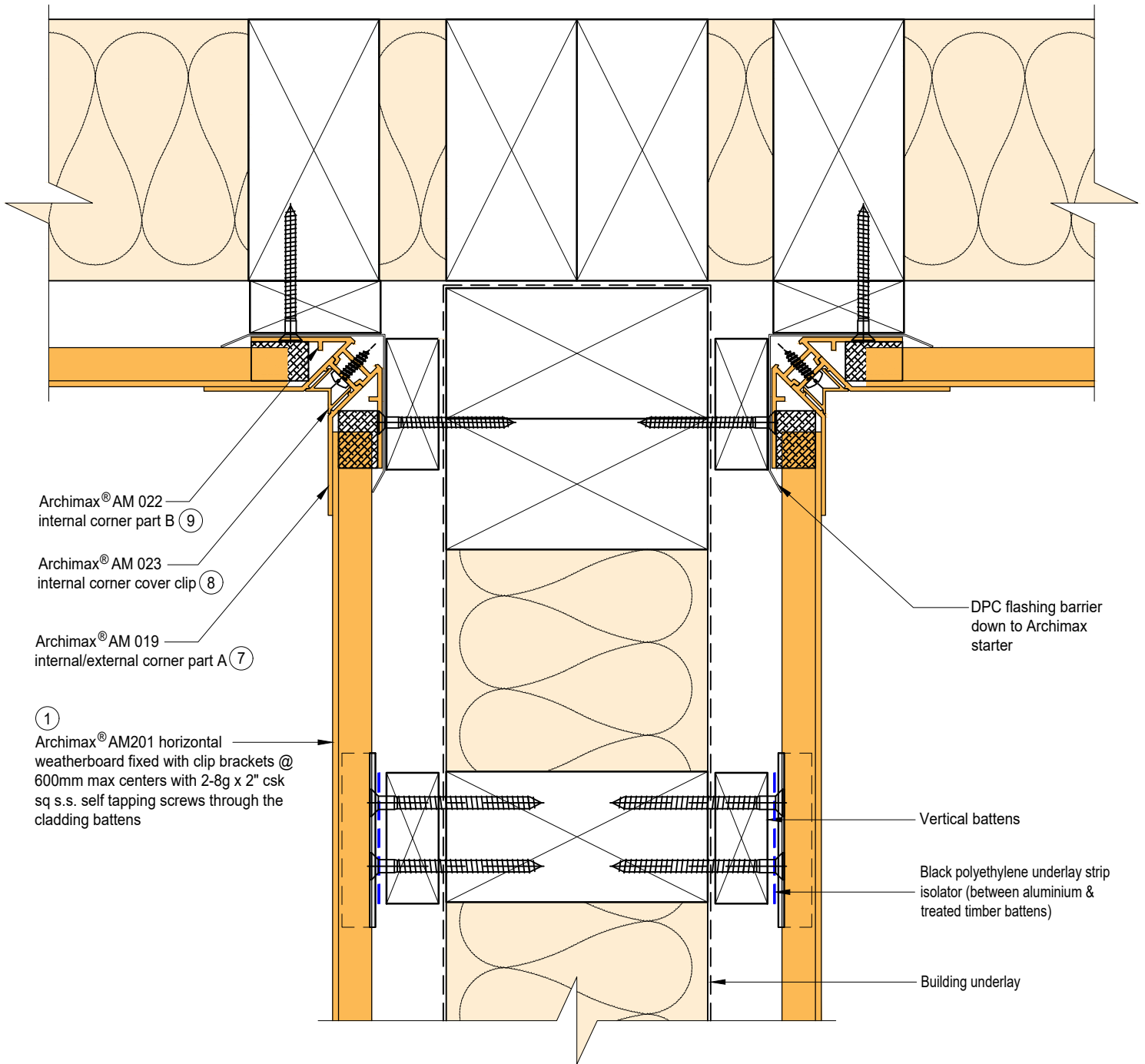
Vertical battens



INTERIOR



BRANZ Appraised  
Appraisal No. 1173 [2021]



Archimax® AM 022  
internal corner part B (9)

Archimax® AM 023  
internal corner cover clip (8)

Archimax® AM 019  
internal/external corner part A (7)

(1)  
Archimax® AM201 horizontal  
weatherboard fixed with clip brackets @  
600mm max centers with 2-8g x 2" csk  
sq s.s. self tapping screws through the  
cladding battens

DPC flashing barrier  
down to Archimax  
starter

Vertical battens

Black polyethylene underlay strip  
isolator (between aluminium &  
treated timber battens)

Building underlay



**ARCHIMAX**  
ALUMINIUM CLADDING SYSTEM  
*Creating more durable building envelopes*  
www.archimax.co.nz

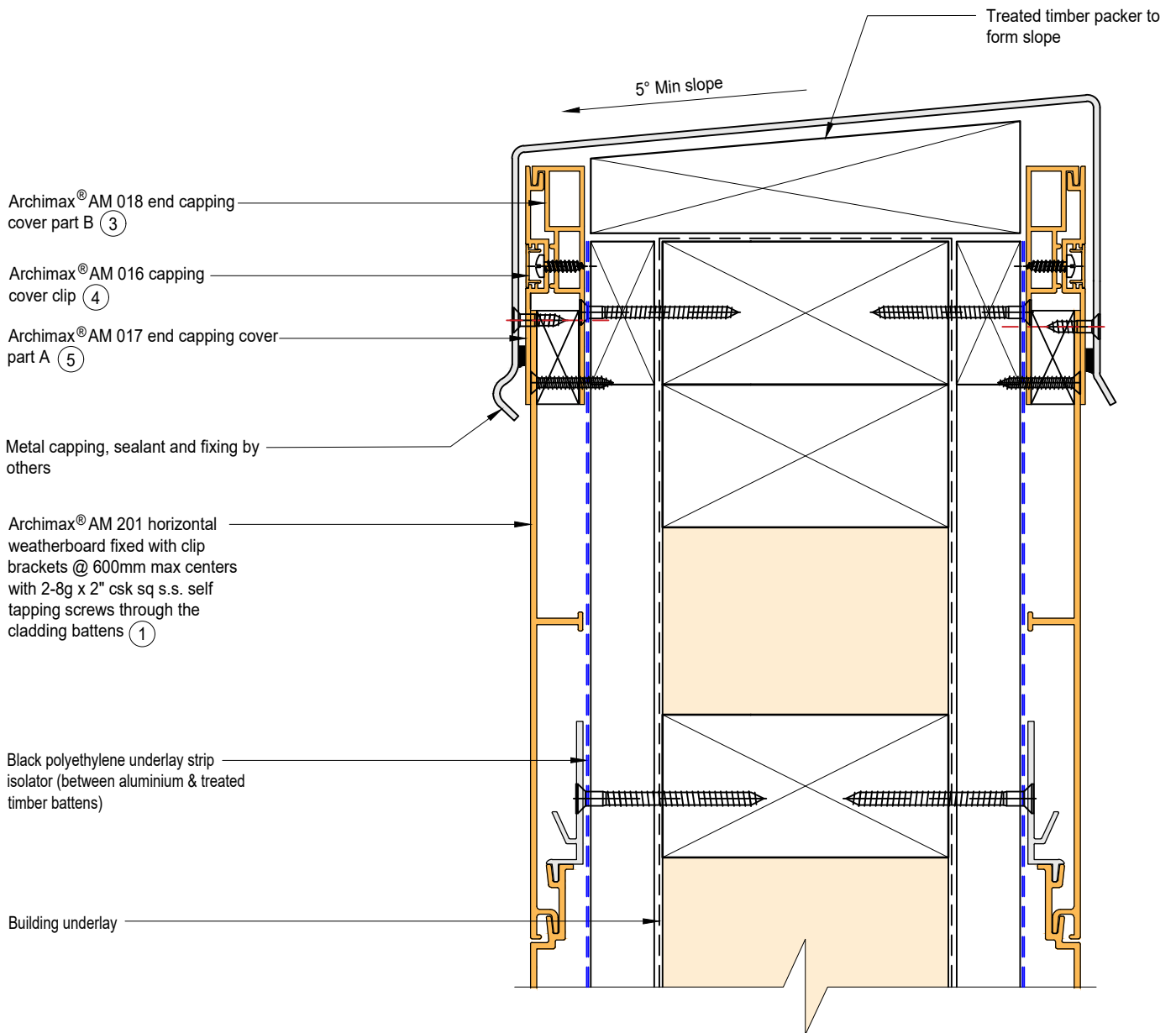
System  
AM 201 - HORIZONTAL  
WEATHERBOARD

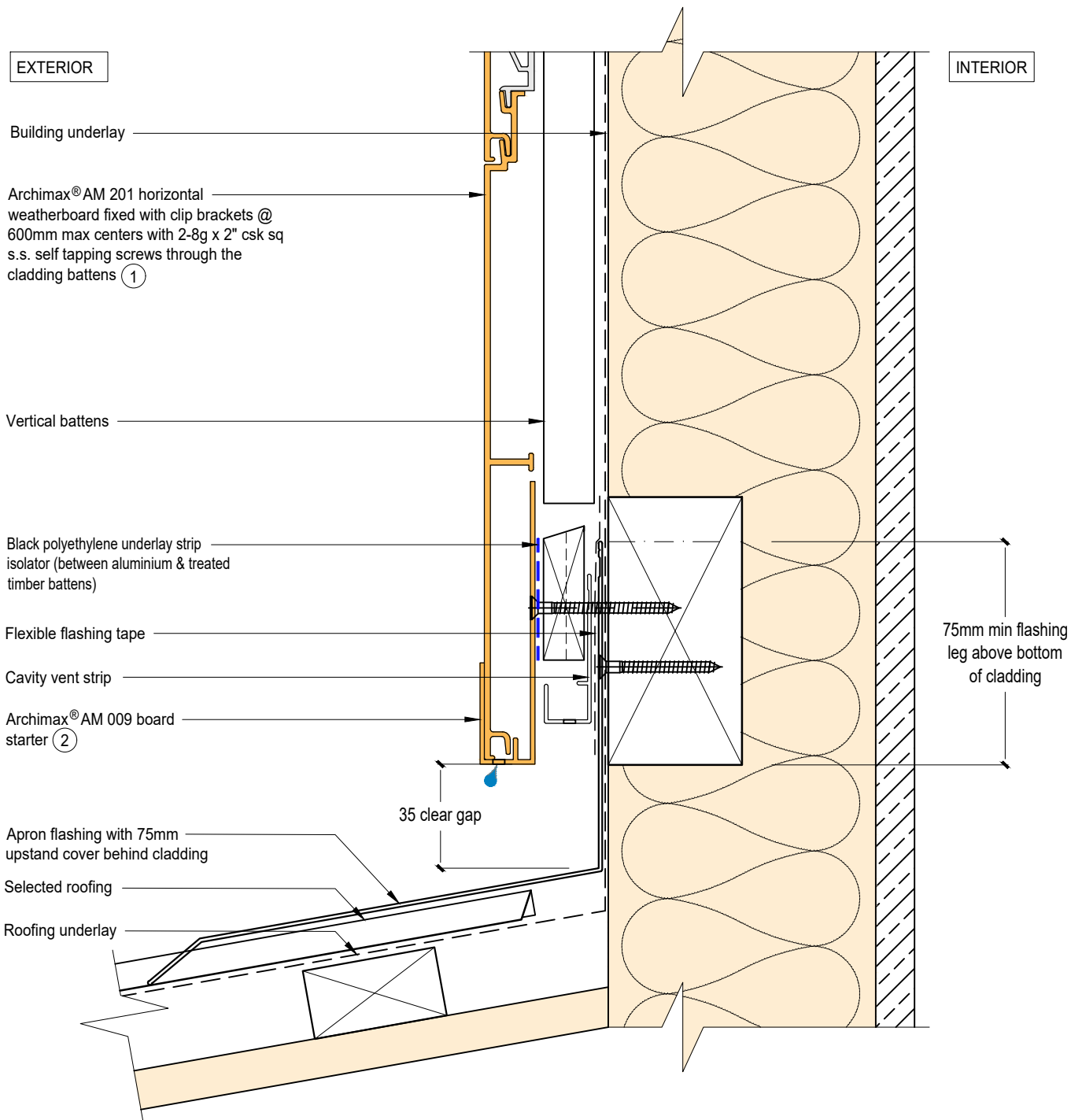
Detail  
ARCHIMAX® INTERNAL CORNER  
JUNCTION DETAIL

Drawing No. Rev.  
AM-BJ-H13 D

This drawing is the copyright of Archimax Limited. Modification of details for job specification requirements must be approved by Archimax Ltd. The building designer is ultimately responsible to ensure all building work is designed and constructed according to building code requirements, best code of practice industry guidelines. All components must be supplied by Archimax. Archimax reserves the right to alter or upgrade details at any time without prior notice.

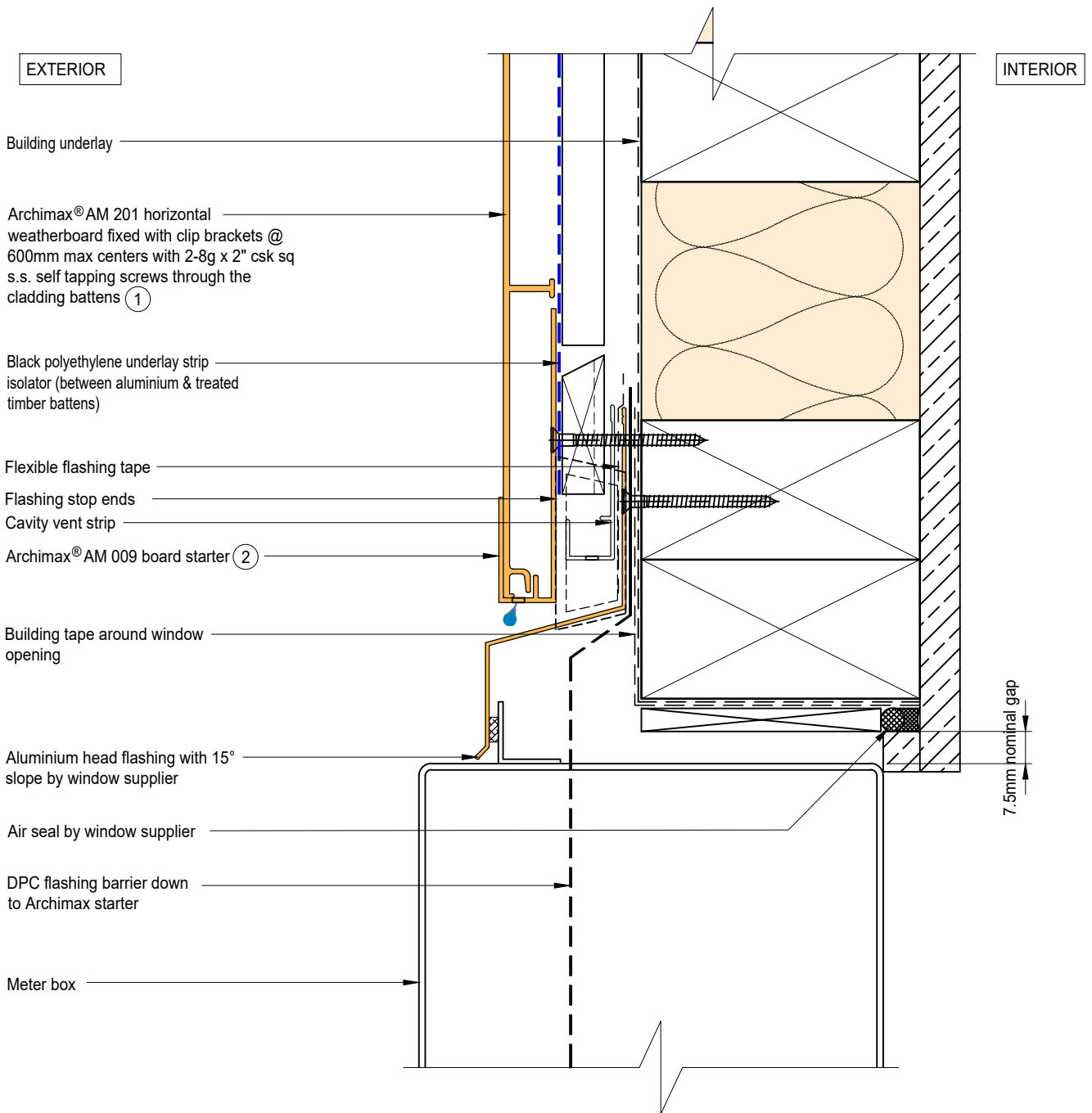
Scale Date  
1:2 NOV23







**ARCHIMAX**  
 ALUMINIUM CLADDING SYSTEM  
*Creating more durable building envelopes*  
[www.archimax.co.nz](http://www.archimax.co.nz)

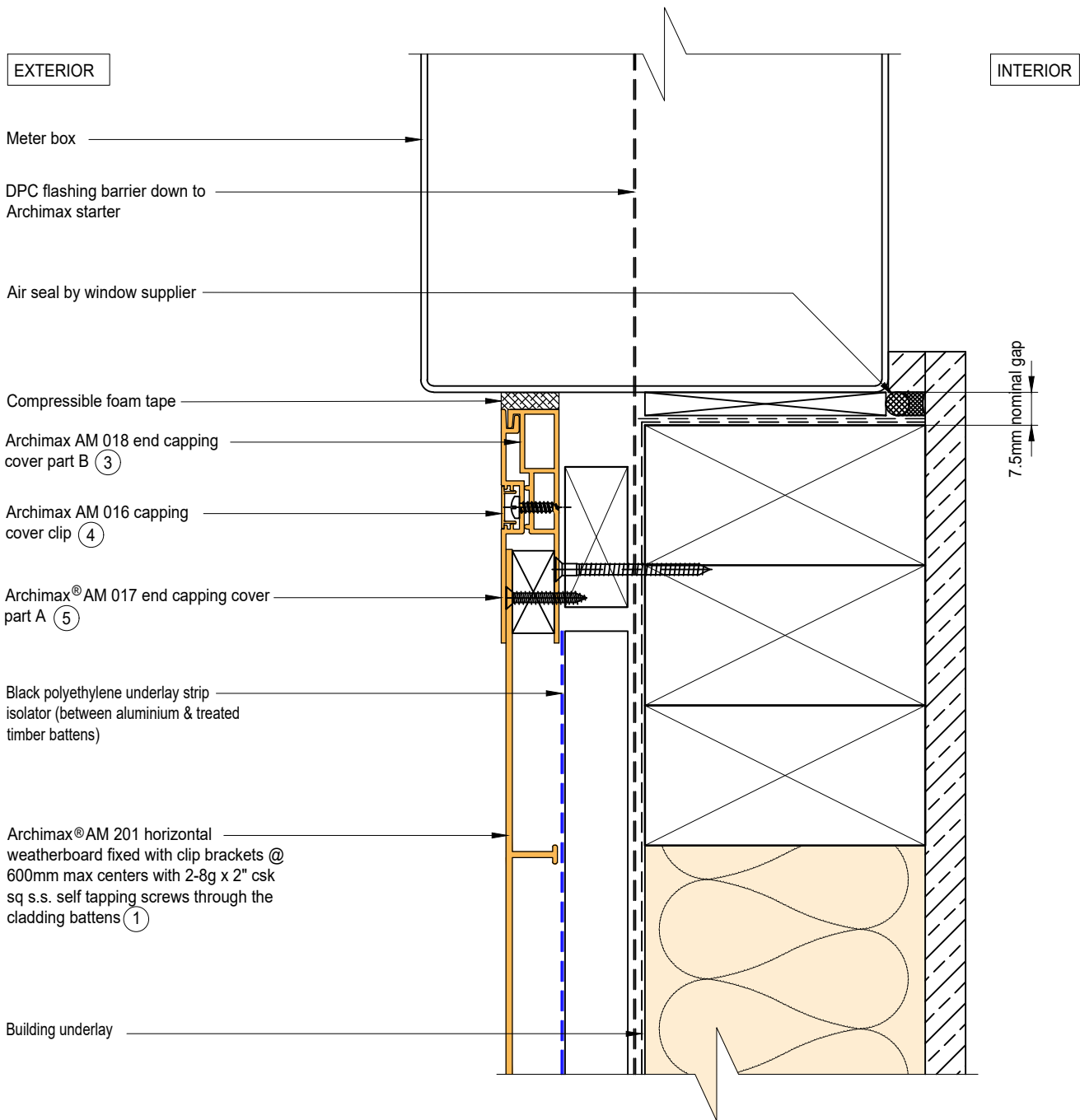
System AM 201 - HORIZONTAL WEATHERBOARD	Detail ARCHIMAX® LOWER ROOF WALL JUNCTION DETAIL	Drawing No. Rev. AM-RW-H15 D
<small>This drawing is the copyright of Archimax Limited. Modification of details for job specification requirements must be approved by Archimax Ltd. The building designer is ultimately responsible to ensure all building work is designed and constructed according to building code requirements, best code of practice industry guidelines. All components must be supplied by Archimax. Archimax reserves the right to alter or upgrade details at any time without prior notice.</small>		Scale 1:2
		Date NOV23




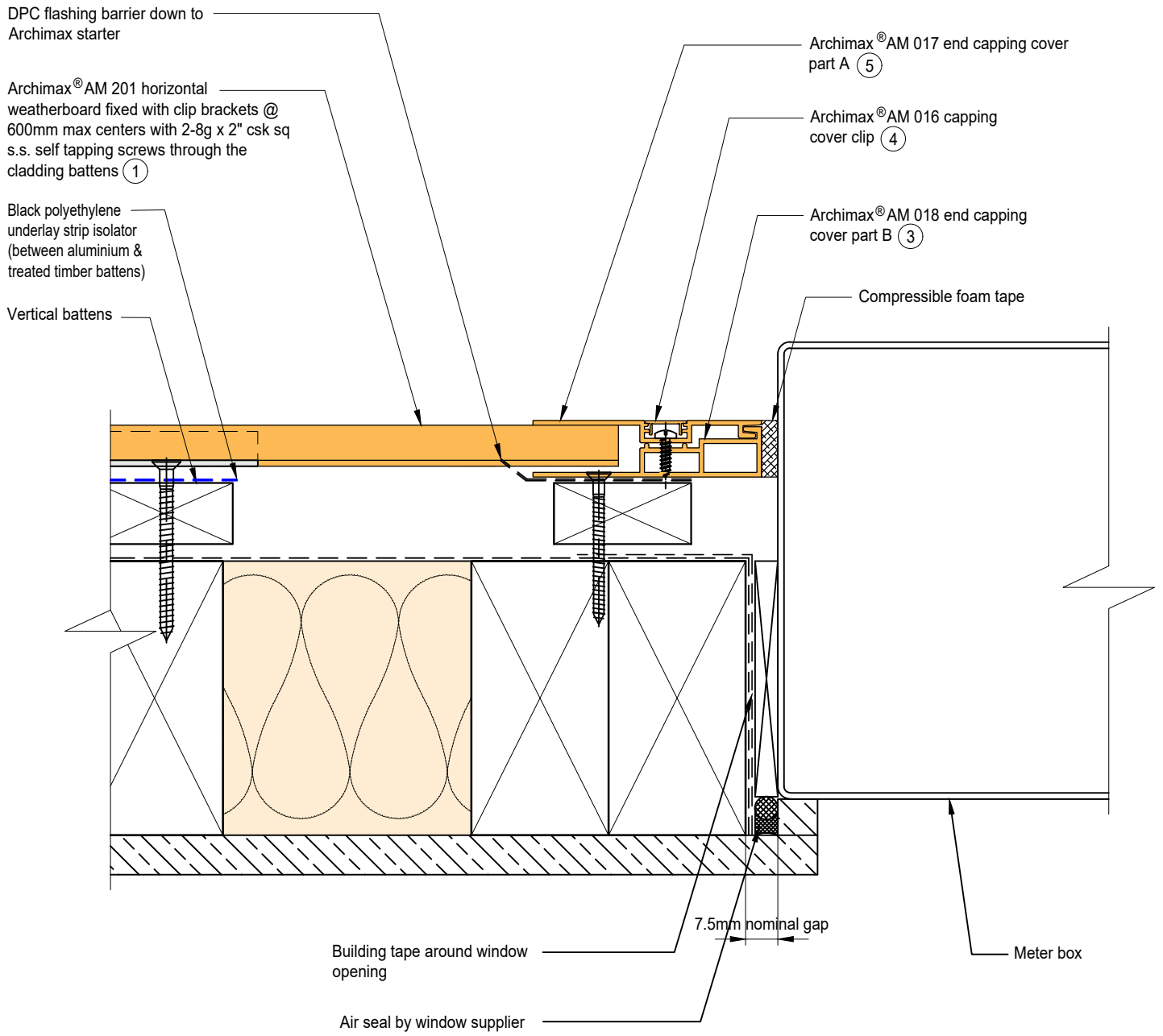
NOTE:  
STOP ENDS TO BE INSTALLED AT FLASHING ENDS




 <p><b>ARCHIMAX</b> ALUMINIUM CLADDING SYSTEM <i>Creating more durable building envelopes</i> www.archimax.co.nz</p>	<p>System AM 201 - HORIZONTAL WEATHERBOARD</p>	<p>Detail ARCHIMAX® METER BOX HEAD DETAIL</p>	<p>Drawing No. Rev. AM-MB-H16 D</p>
	<p>This drawing is the copyright of Archimax Limited. Modification of details for job specification requirements must be approved by Archimax Ltd. The building designer is ultimately responsible to ensure all building work is designed and constructed according to building code requirements, best code of practice industry guidelines. All components must be supplied by Archimax. Archimax reserves the right to alter or upgrade details at any time without prior notice.</p>		<p>Scale Date 1:2 NOV23</p>



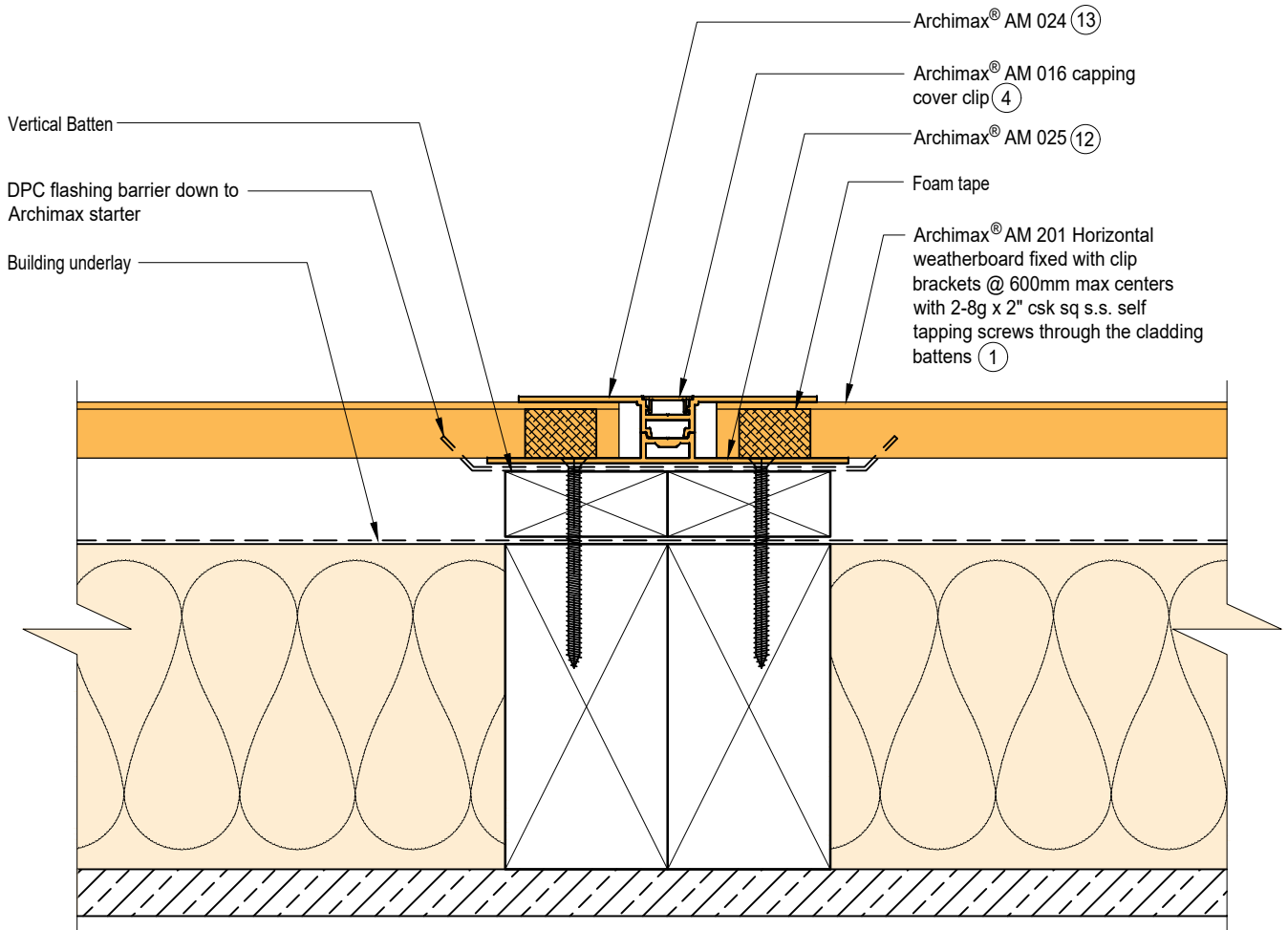
 <p><b>ARCHIMAX</b> ALUMINIUM CLADDING SYSTEM <i>Creating more durable building envelopes</i> www.archimax.co.nz</p>	<p>System AM 201 - HORIZONTAL WEATHERBOARD</p>	<p>Detail ARCHIMAX® METER BOX SILL DETAIL</p>	<p>Drawing No. Rev. AM-MB-H17 D</p>
	<p>This drawing is the copyright of Archimax Limited. Modification of details for job specification requirements must be approved by Archimax Ltd. The building designer is ultimately responsible to ensure all building work is designed and constructed according to building code requirements, best code of practice industry guidelines. All components must be supplied by Archimax. Archimax reserves the right to alter or upgrade details at any time without prior notice.</p>		<p>Scale Date 1:2 NOV23</p>



 <p><b>ARCHIMAX</b> ALUMINIUM CLADDING SYSTEM <i>Creating more durable building envelopes</i> www.archimax.co.nz</p>	<p>System AM 201 - HORIZONTAL WEATHERBOARD</p>	<p>Detail ARCHIMAX® METER BOX JAMB DETAIL</p>	<p>Drawing No. Rev. AM-MB-H18 D</p>			
	<p>This drawing is the copyright of Archimax Limited. Modification of details for job specification requirements must be approved by Archimax Ltd. The building designer is ultimately responsible to ensure all building work is designed and constructed according to building code requirements, best code of practice industry guidelines. All components must be supplied by Archimax. Archimax reserves the right to alter or upgrade details at any time without prior notice.</p>		<table border="1"> <tr> <td>Scale</td> <td>Date</td> </tr> <tr> <td>1:2</td> <td>NOV23</td> </tr> </table>	Scale	Date	1:2
Scale	Date					
1:2	NOV23					




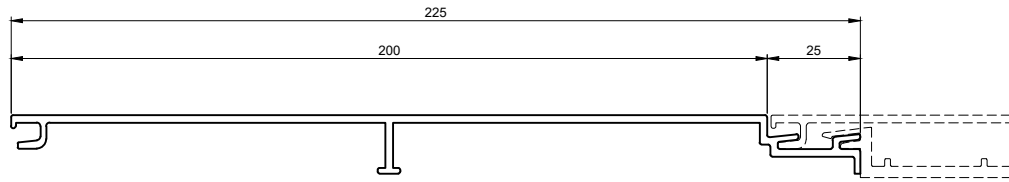
EXTERIOR



INTERIOR



 <p><b>ARCHIMAX</b> ALUMINIUM CLADDING SYSTEM <i>Creating more durable building envelopes</i> www.archimax.co.nz</p>	<p>System AM 201 - HORIZONTAL WEATHERBOARD</p>	<p>Detail ARCHIMAX® VERTICAL JOINT DETAIL</p>	<p>Drawing No. Rev. AM-VJ-H19 D</p>
	<p>This drawing is the copyright of Archimax Limited. Modification of details for job specification requirements must be approved by Archimax Ltd. The building designer is ultimately responsible to ensure all building work is designed and constructed according to building code requirements, best code of practice industry guidelines. All components must be supplied by Archimax. Archimax reserves the right to alter or upgrade details at any time without prior notice.</p>		<p>Scale Date 1:2 NOV23</p>



①

AM 201 Archimax Horizontal / Vertical Weatherboard

<p>②</p>	<p>③</p>	<p>④</p>	<p>⑤</p>	<p>⑥</p>
AM 009	AM 018	AM 016	AM 017	AM 029
Board Starter	End Capping Part B	Jointer / Jamb / Sill Capping Cover Clip	End Capping Part A	Clip Bracket
<p>⑨</p>	<p>⑧</p>	<p>⑨</p>	<p>⑪</p>	
AM 019	AM 023	AM 022	AM 020	
Internal/External Corner Part A	Internal Corner Cover Clip	Internal Corner Part B	External Cover Cover Clip	