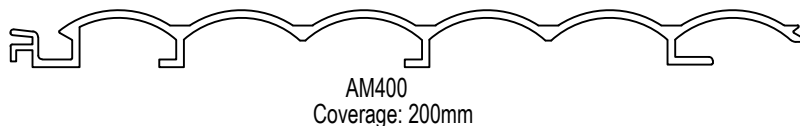
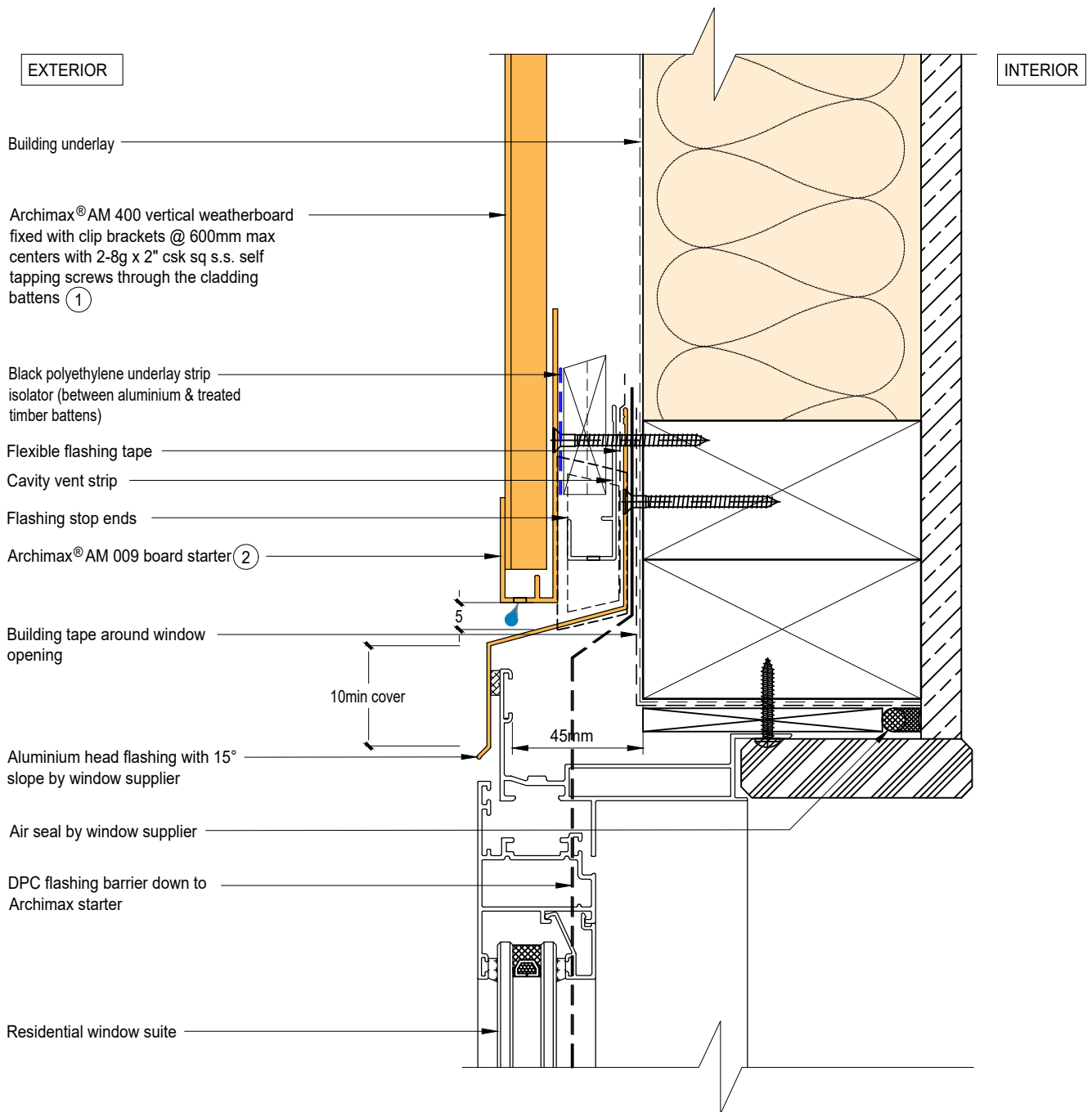




Archimax[®] Aluminium Cladding System
AM400 Vertical Profile - Installation Details

Drawing No.	Rev	Description
AM-WH-V1	D	Archimax [®] Window Head Detail
AM-WS-V2.1	D	Archimax [®] Window Sill Detail
AM-WS-V2.2	D	Archimax [®] Window Sill Detail
AM-WJ-V3	D	Archimax [®] Window Jamb Detail
AM-EXT-V4	D	Archimax [®] External Corner Detail
AM-INT-V5	D	Archimax [®] Internal Corner Detail
AM-CBS-V6.1	D	Archimax [®] Concrete Floor Board Starter Detail - Timber
AM-CBS-V6.2	D	Archimax [®] Concrete Floor Board Starter Detail - Fire Wall
AM-HJ-V7	D	Archimax [®] Horizontal Joint Detail
AM-DJ-V8	D	Archimax [®] Deck Junction Detail
AM-PP-V9A	D	Archimax [®] Pipe Penetration Plan View Detail
AM-PP-V9B	D	Archimax [®] Pipe Penetration Section View Detail
AM-SO-V10	D	Archimax [®] Soffit Detail
AM-SO-V11.1	D	Archimax [®] Fascia, Soffit & Wall Detail
AM-SO-V11.2	D	Archimax [®] Fascia, Soffit & Wall Detail (90° Soffit/Wall)
AM-SO-V11.3	D	Archimax [®] Fascia, Board Soffit & Wall Detail
AM-SO-V12	D	Archimax [®] Non-Soffit Detail
AM-BJ-V13	D	Archimax [®] Internal Corner Junction Detail
AM-PAR-V14	D	Archimax [®] Parapet with Cavity Detail
AM-RW-V15	D	Archimax [®] Lower Roof Wall Junction Detail
AM-MB-V16	D	Archimax [®] Meter Box Head Detail
AM-MB-V17	D	Archimax [®] Meter Box Sill Detail
AM-MB-V18	D	Archimax [®] Meter Box Jamb Detail




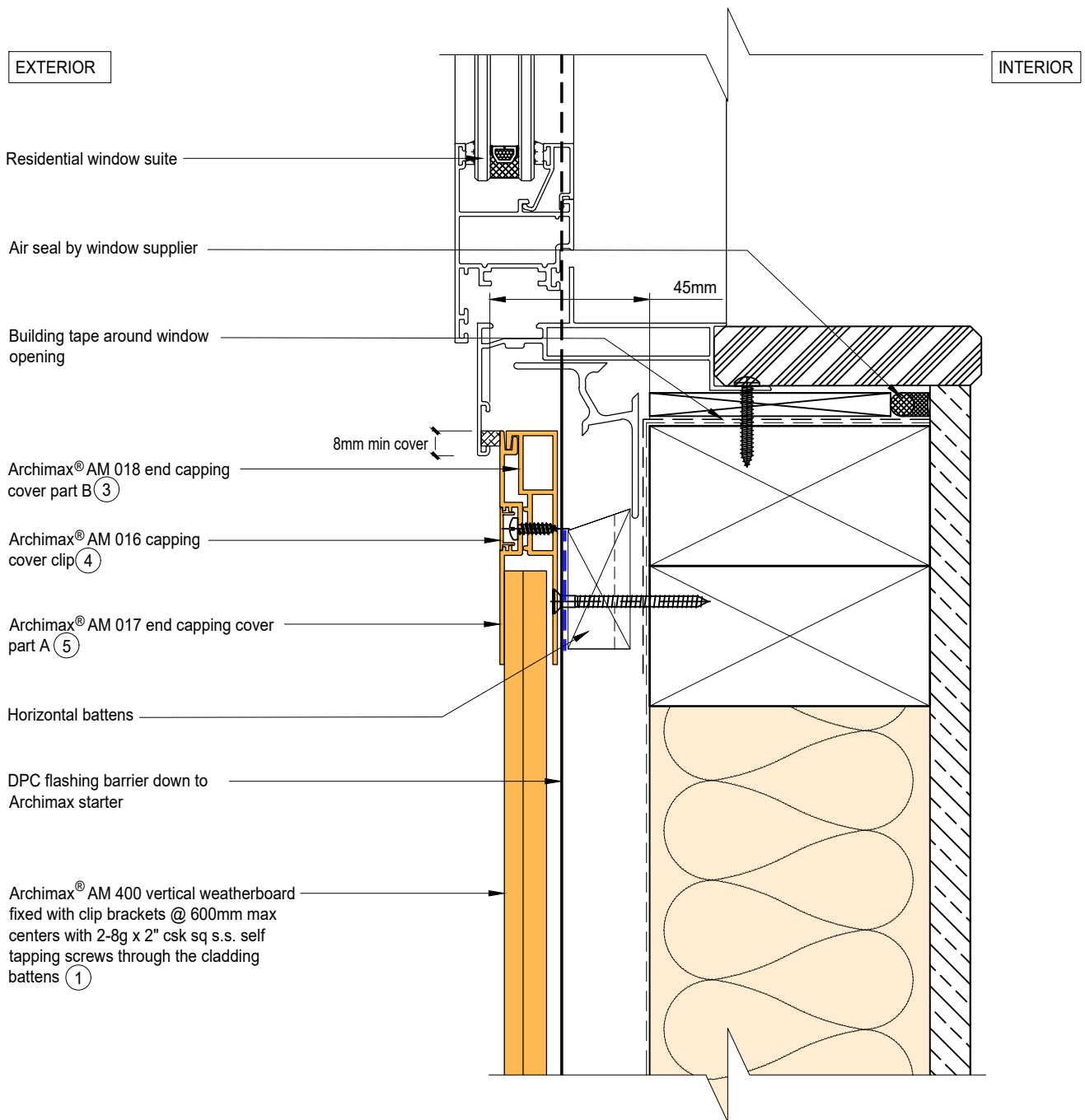


NOTE:

1. Stop ends to be installed at flashing ends.
2. Minimum Clearance between the AIR BARRIER and WINDOW JOINERY to be 45mm. Window Joinery should not be permanently fixed until cladding installed.




 <p>ARCHIMAX ALUMINIUM CLADDING SYSTEM <i>Creating more durable building envelopes</i> www.archimax.co.nz</p>	<p>System AM400 - VERTICAL WEATHERBOARD</p>	<p>Detail ARCHIMAX® WINDOW HEAD DETAIL</p>	<p>Drawing No. Rev. AM-WH-V1 D</p>
	<p>This drawing is the copyright of Archimax Limited. Modification of details for job specification requirements must be approved by Archimax Ltd. The building designer is ultimately responsible to ensure all building work is designed and constructed according to building code requirements, best code of practice industry guidelines. All components must be supplied by Archimax. Archimax reserves the right to alter or upgrade details at any time without prior notice.</p>		<p>Scale Date 1:2 NOV23</p>

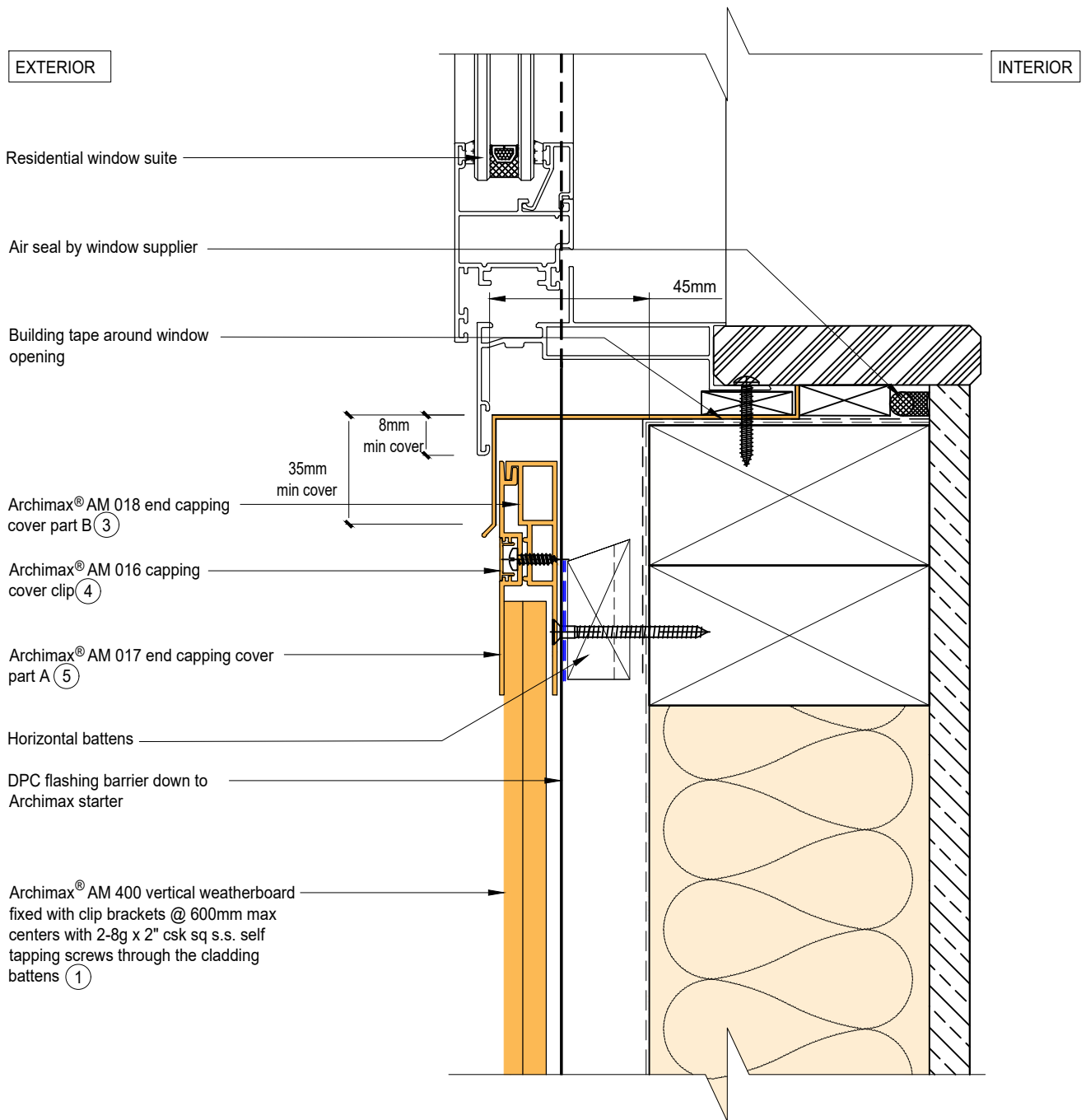


NOTE:

1. Minimum Clearance between the AIR BARRIER and WINDOW JOINERY to be 45mm. Window Joinery should not be permanently fixed until cladding installed.




 <p>ARCHIMAX ALUMINIUM CLADDING SYSTEM <i>Creating more durable building envelopes</i> www.archimax.co.nz</p>	System AM400 - VERTICAL WEATHERBOARD	Detail ARCHIMAX® WINDOW SILL DETAIL	Drawing No. Rev. AM-WS-V2.1 D			
	<p>This drawing is the copyright of Archimax Limited. Modification of details for job specification requirements must be approved by Archimax Ltd. The building designer is ultimately responsible to ensure all building work is designed and constructed according to building code requirements, best code of practice industry guidelines. All components must be supplied by Archimax. Archimax reserves the right to alter or upgrade details at any time without prior notice.</p>		<table border="1"> <tr> <td>Scale</td> <td>Date</td> </tr> <tr> <td>1:2</td> <td>NOV23</td> </tr> </table>	Scale	Date	1:2
Scale	Date					
1:2	NOV23					



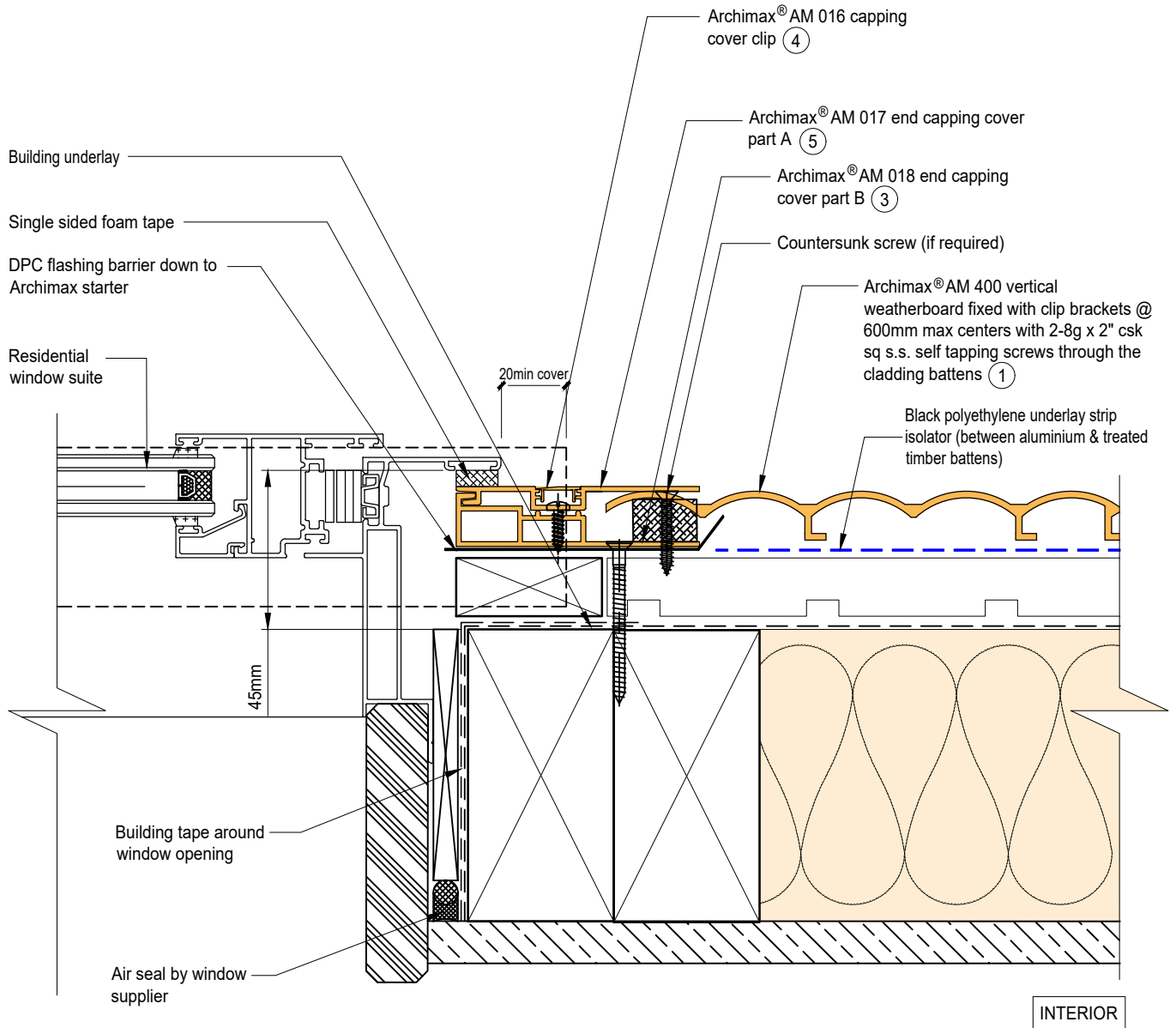
NOTE:

1. Minimum Clearance between the AIR BARRIER and WINDOW JOINERY to be 45mm. Window Joinery should not be permanently fixed until cladding installed.



 <p>ARCHIMAX ALUMINIUM CLADDING SYSTEM <i>Creating more durable building envelopes</i> www.archimax.co.nz</p>	System AM400 - VERTICAL WEATHERBOARD	Detail ARCHIMAX® WINDOW SILL DETAIL	Drawing No. Rev. AM-WS-V2.2 D	
	<p>This drawing is the copyright of Archimax Limited. Modification of details for job specification requirements must be approved by Archimax Ltd. The building designer is ultimately responsible to ensure all building work is designed and constructed according to building code requirements, best code of practice industry guidelines. All components must be supplied by Archimax. Archimax reserves the right to alter or upgrade details at any time without prior notice.</p>			Scale 1:2


EXTERIOR

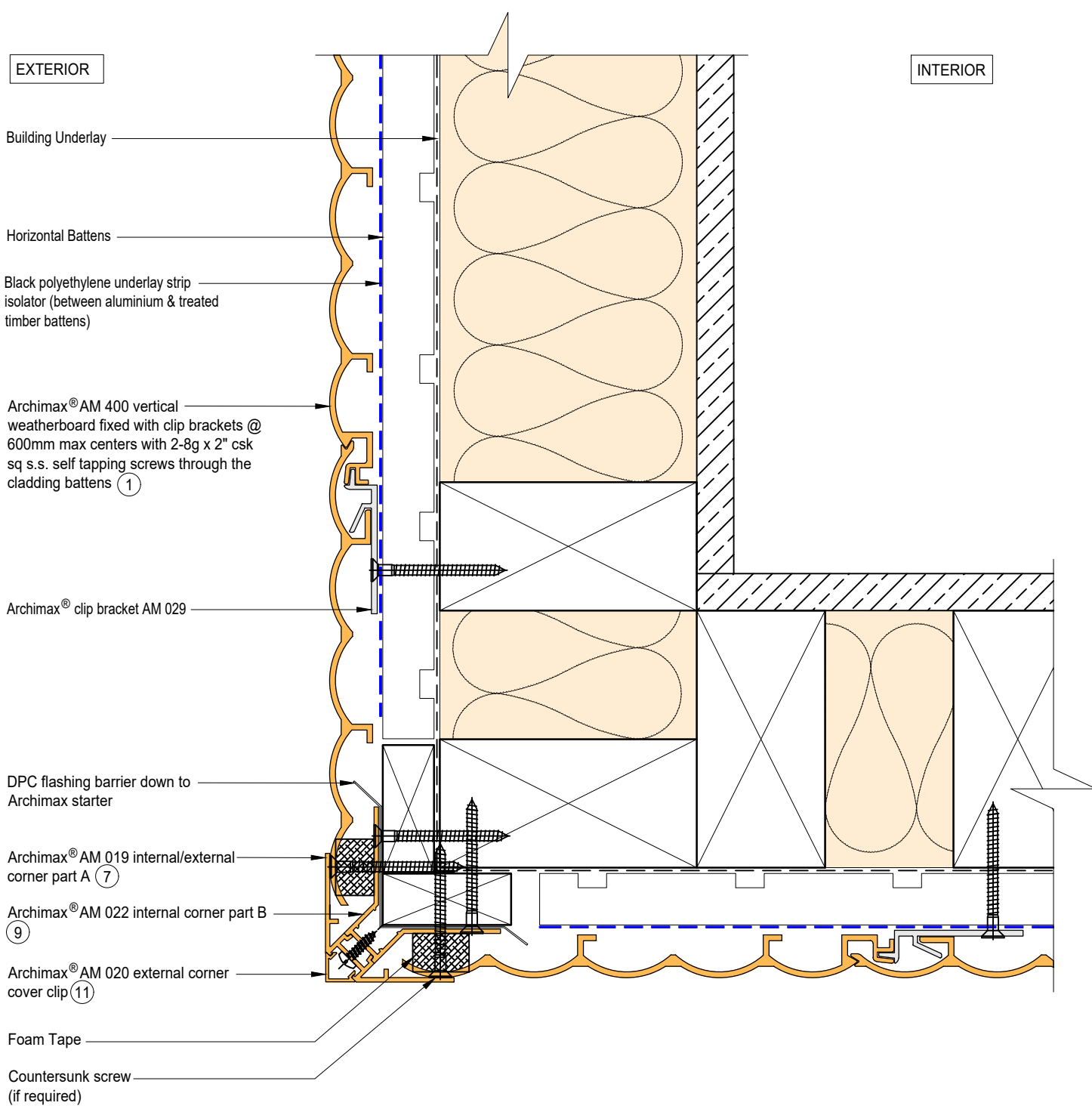


NOTE:

1. Minimum Clearance between the AIR BARRIER and WINDOW JOINERY to be 45mm. Window Joinery should not be permanently fixed until cladding installed.



 <p>ARCHIMAX ALUMINIUM CLADDING SYSTEM <i>Creating more durable building envelopes</i> www.archimax.co.nz</p>	System AM400 - VERTICAL WEATHERBOARD	Detail ARCHIMAX® WINDOW JAMB DETAIL	Drawing No. AM-WJ-V3	Rev. D
	<p>This drawing is the copyright of Archimax Limited. Modification of details for job specification requirements must be approved by Archimax Ltd. The building designer is ultimately responsible to ensure all building work is designed and constructed according to building code requirements, best code of practice industry guidelines. All components must be supplied by Archimax. Archimax reserves the right to alter or upgrade details at any time without prior notice.</p>			Scale 1:2



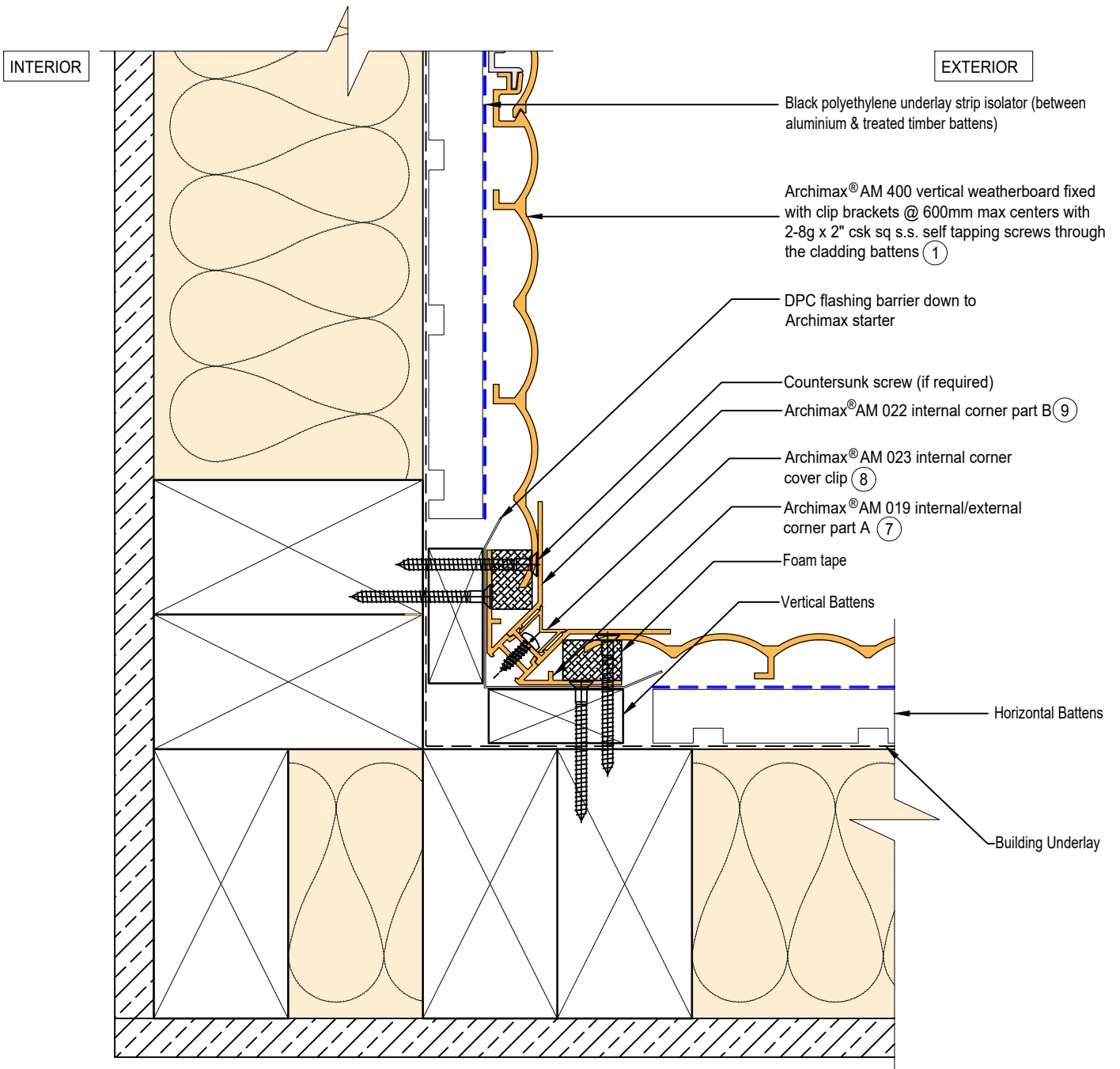
System
AM400 - VERTICAL WEATHERBOARD


Detail
ARCHIMAX® EXTERNAL CORNER
DETAIL

Drawing No. Rev.
AM-EXT-V4 D

This drawing is the copyright of Archimax Limited. Modification of details for job specification requirements must be approved by Archimax Ltd. The building designer is ultimately responsible to ensure all building work is designed and constructed according to building code requirements, best code of practice industry guidelines. All components must be supplied by Archimax. Archimax reserves the right to alter or upgrade details at any time without prior notice.

Scale Date
1:2 NOV23



 <p>ARCHIMAX ALUMINIUM CLADDING SYSTEM <i>Creating more durable building envelopes</i> www.archimax.co.nz</p>	System AM400 - VERTICAL WEATHERBOARD	Detail ARCHIMAX® INTERNAL CORNER DETAIL	Drawing No. Rev. AM-INT-V5 D			
	<p>This drawing is the copyright of Archimax Limited. Modification of details for job specification requirements must be approved by Archimax Ltd. The building designer is ultimately responsible to ensure all building work is designed and constructed according to building code requirements, best code of practice industry guidelines. All components must be supplied by Archimax. Archimax reserves the right to alter or upgrade details at any time without prior notice.</p>		<table border="1"> <tr> <td>Scale</td> <td>Date</td> </tr> <tr> <td>1:2</td> <td>NOV23</td> </tr> </table>	Scale	Date	1:2
Scale	Date					
1:2	NOV23					

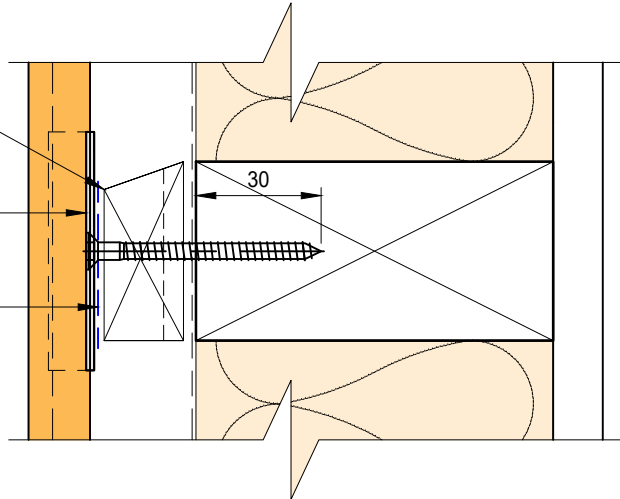
EXTERIOR

INTERIOR

Castellated timber batten
(Horizontal)

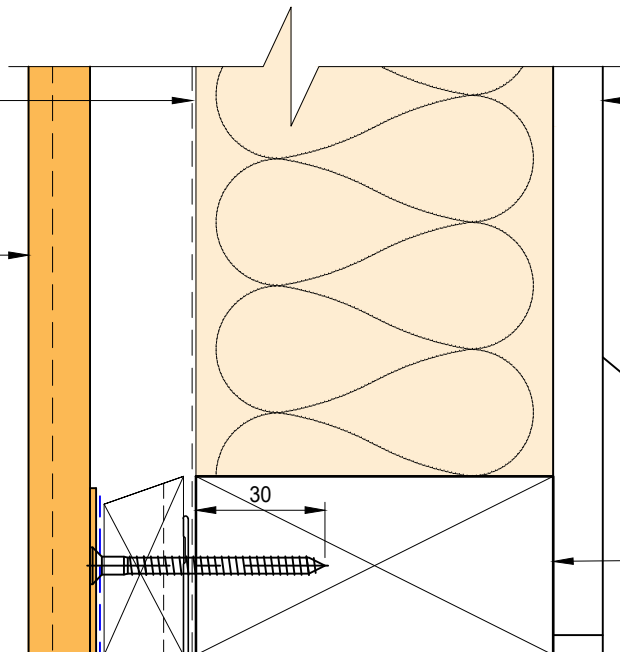
Archimax® clip bracket AM 029

Black polyethylene underlay strip
isolator (between aluminium & treated
timber battens)



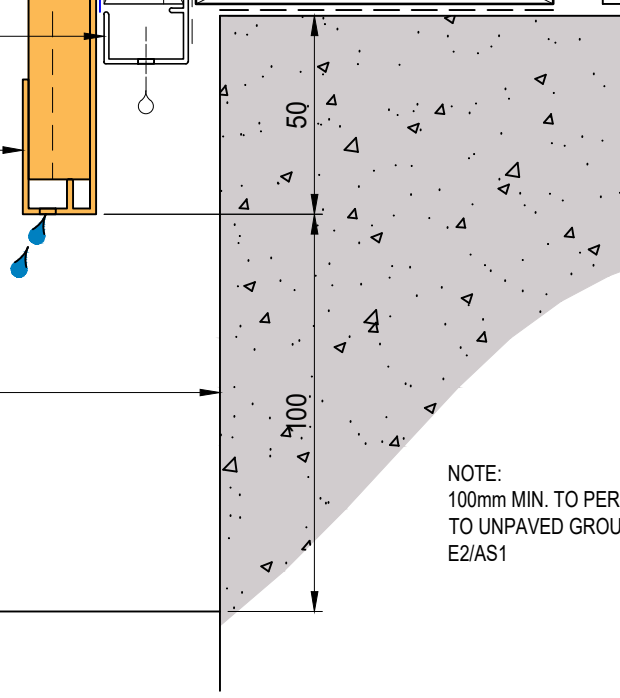
Building underlay

① Archimax® AM 400 vertical
weatherboard fixed with clip brackets @
600mm max centers with 2-8g x 2" csk
sq s.s. self tapping screws through the
cladding battens



Cavity vent strip
(By others)

② Archimax® AM 009 board
starter



Concrete slab or brickwork
(By others)

Finish ground level

Interior lining

Bottom plate over DPC

NOTE:
100mm MIN. TO PERMANENT PAVING OR 175mm
TO UNPAVED GROUND AS PER CLAUSE 9.1.3 OF
E2/AS1



System
AM400 - VERTICAL WEATHERBOARD

Detail
ARCHIMAX® CONCRETE FLOOR
BOARD STARTER DETAIL - TIMBER

Drawing No. Rev.
AM-CBS-V6.1 D

This drawing is the copyright of Archimax Limited. Modification of details for job specification requirements must be approved by Archimax Ltd. The building designer is ultimately responsible to ensure all building work is designed and constructed according to building code requirements, best code of practice industry guidelines. All components must be supplied by Archimax. Archimax reserves the right to alter or upgrade details at any time without prior notice.

Scale
1:2

Date
NOV23

EXTERIOR

INTERIOR

Archimax® Aluminium Batten AMB 01 (Horizontal)

Archimax® clip bracket AM 029

Rigid air barrier (FRR)

① Archimax® AM 400 vertical weatherboard fixed with clip brackets @ 600mm max centers with 2-8g x 2" csk sq s.s. self tapping screws through the cladding battens

Cavity vent strip (By others)

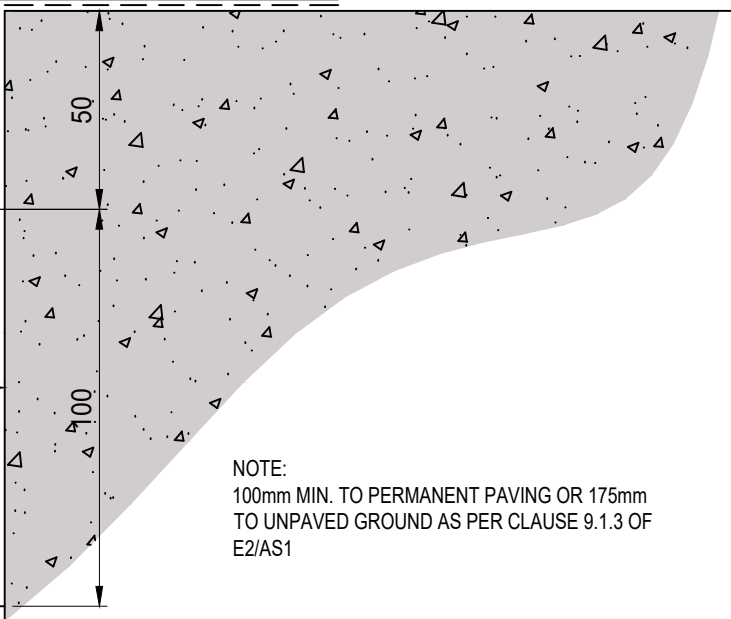
② Archimax® AM 009 board starter

Concrete slab or brickwork (By others)

Finish ground level

Interior lining

Bottom plate over DPC



NOTE:
100mm MIN. TO PERMANENT PAVING OR 175mm TO UNPAVED GROUND AS PER CLAUSE 9.1.3 OF E2/AS1



System
AM400 - VERTICAL WEATHERBOARD

Detail
ARCHIMAX® CONCRETE FLOOR BOARD STARTER DETAIL-FIRE WALL

Drawing No. Rev.
AM-CBS-V6.2 D

This drawing is the copyright of Archimax Limited. Modification of details for job specification requirements must be approved by Archimax Ltd. The building designer is ultimately responsible to ensure all building work is designed and constructed according to building code requirements, best code of practice industry guidelines. All components must be supplied by Archimax. Archimax reserves the right to alter or upgrade details at any time without prior notice.

Scale Date
1:2 NOV23

EXTERIOR

INTERIOR

Building underlay

Archimax® AM 400 vertical weatherboard fixed with clip brackets @ 600mm max centers with 2-8g x 2" csk sq s.s. self tapping screws through the cladding battens ①

Black polyethylene underlay strip isolator (between aluminium & treated timber battens)

Flexible flashing tape

Cavity vent strip

Archimax AM 009 board starter ②

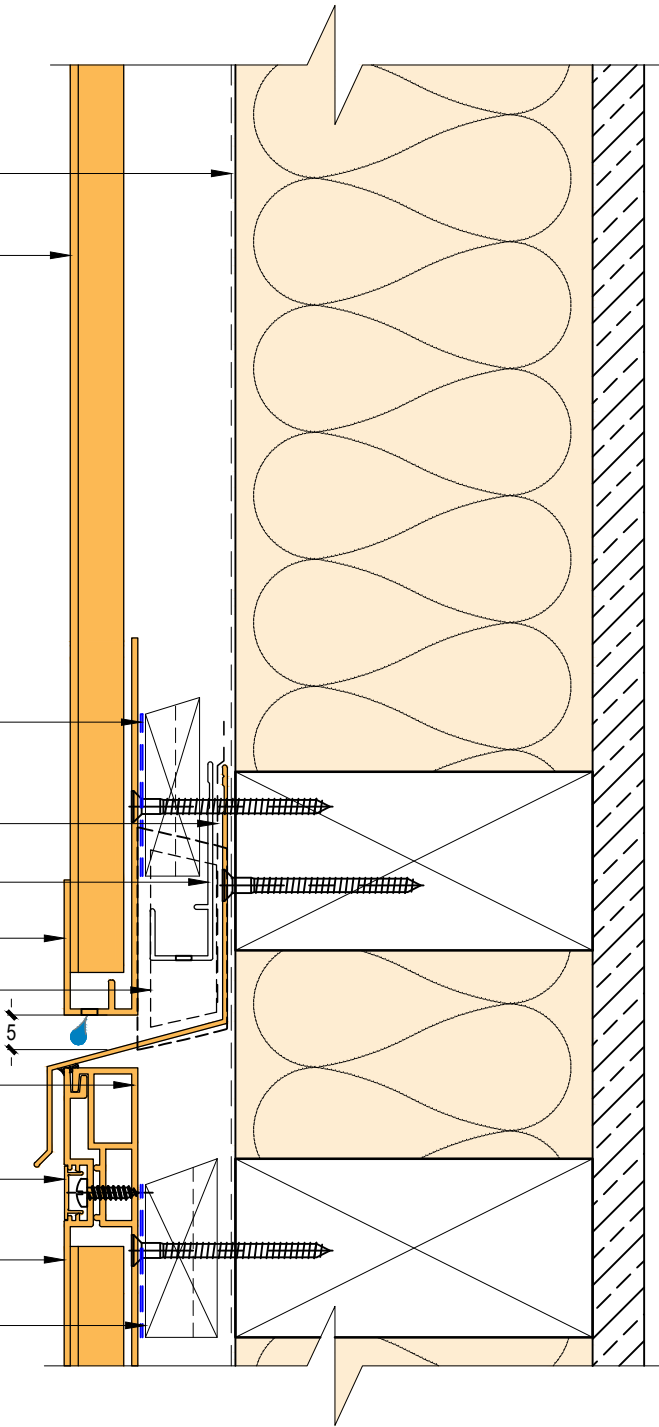
Inter-Storey flashing stop ends

Archimax® AM 018 end capping cover part B ③

Archimax® AM 016 capping cover clip ④

Archimax® AM 017 end capping cover part A ⑤

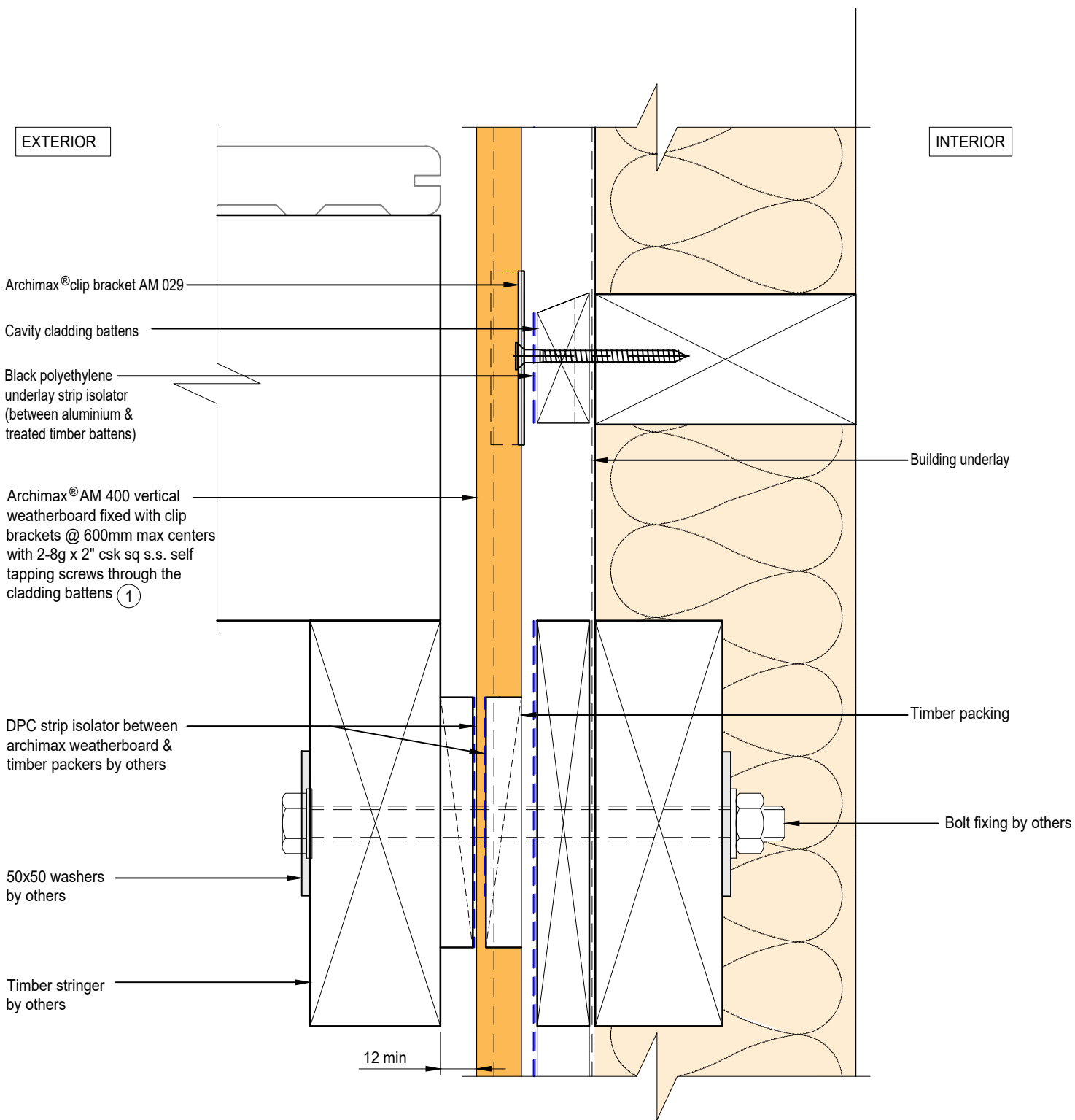
Horizontal battens



NOTE:
STOP ENDS TO BE INSTALLED AT INTER-STOREY FLASHING ENDS



System AM400 - VERTICAL WEATHERBOARD	Detail ARCHIMAX® HORIZONTAL JOINT DETAIL	Drawing No. Rev. AM-HJ-V7 D
This drawing is the copyright of Archimax Limited. Modification of details for job specification requirements must be approved by Archimax Ltd. The building designer is ultimately responsible to ensure all building work is designed and constructed according to building code requirements, best code of practice industry guidelines. All components must be supplied by Archimax. Archimax reserves the right to alter or upgrade details at any time without prior notice.		Scale Date 1:2 NOV23



System
AM400 - VERTICAL WEATHERBOARD

Detail
ARCHIMAX® DECK JUNCTION DETAIL

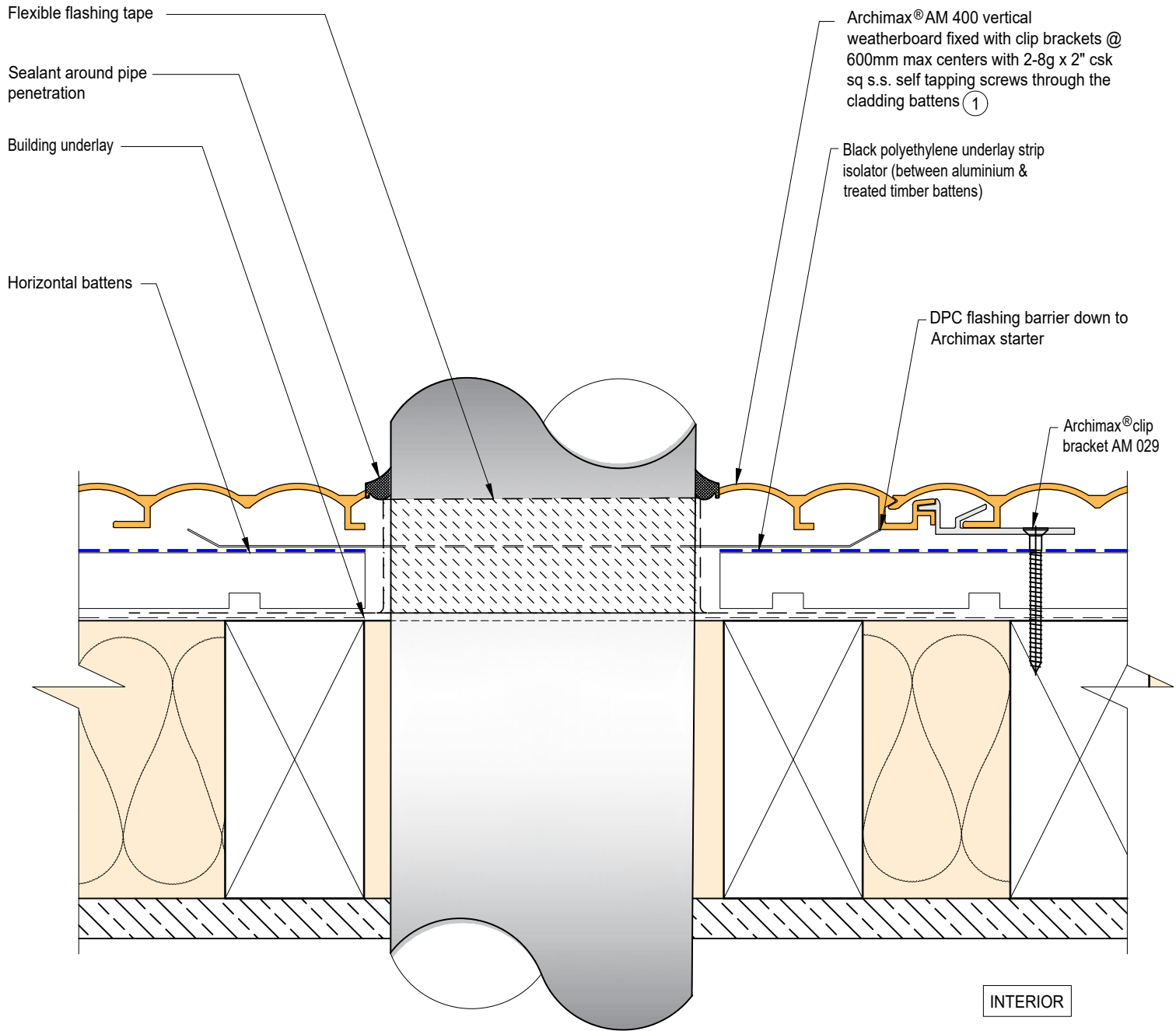
This drawing is the copyright of Archimax Limited. Modification of details for job specification requirements must be approved by Archimax Ltd. The building designer is ultimately responsible to ensure all building work is designed and constructed according to building code requirements, best code of practice industry guidelines. All components must be supplied by Archimax. Archimax reserves the right to alter or upgrade details at any time without prior notice.

Drawing No. Rev.
AM-DJ-V8 D

Scale Date
1:2 NOV23

Scale Date
1:2 NOV23

EXTERIOR



INTERIOR



EXTERIOR

INTERIOR

Archimax® AM 400 vertical weatherboard fixed with clip brackets @ 600mm max centers with 2-8g x 2" csk sq s.s. self tapping screws through the cladding battens ①

Archimax® clip bracket AM 029

Horizontal battens

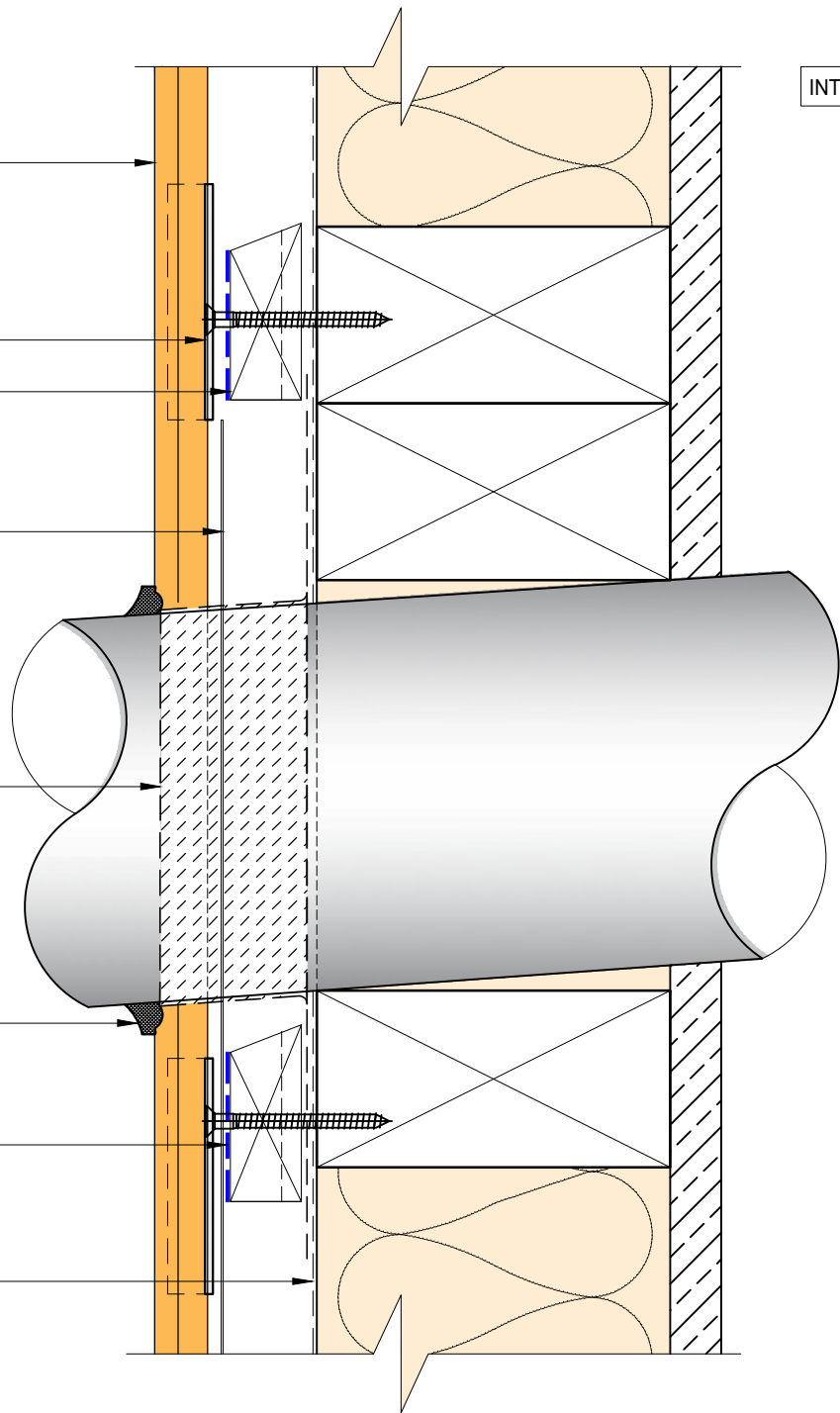
DPC flashing barrier down to Archimax starter

Flexible flashing tape

Sealant around pipe penetration

Black polyethylene underlay strip isolator (between aluminium & treated timber battens)

Building underlay



EXTERIOR

INTERIOR

Compressible foam tape

Archimax® AM 018 end capping cover part B (3)

Archimax® AM 016 capping cover clip (4)

Archimax® AM 017 end capping cover part A (5)

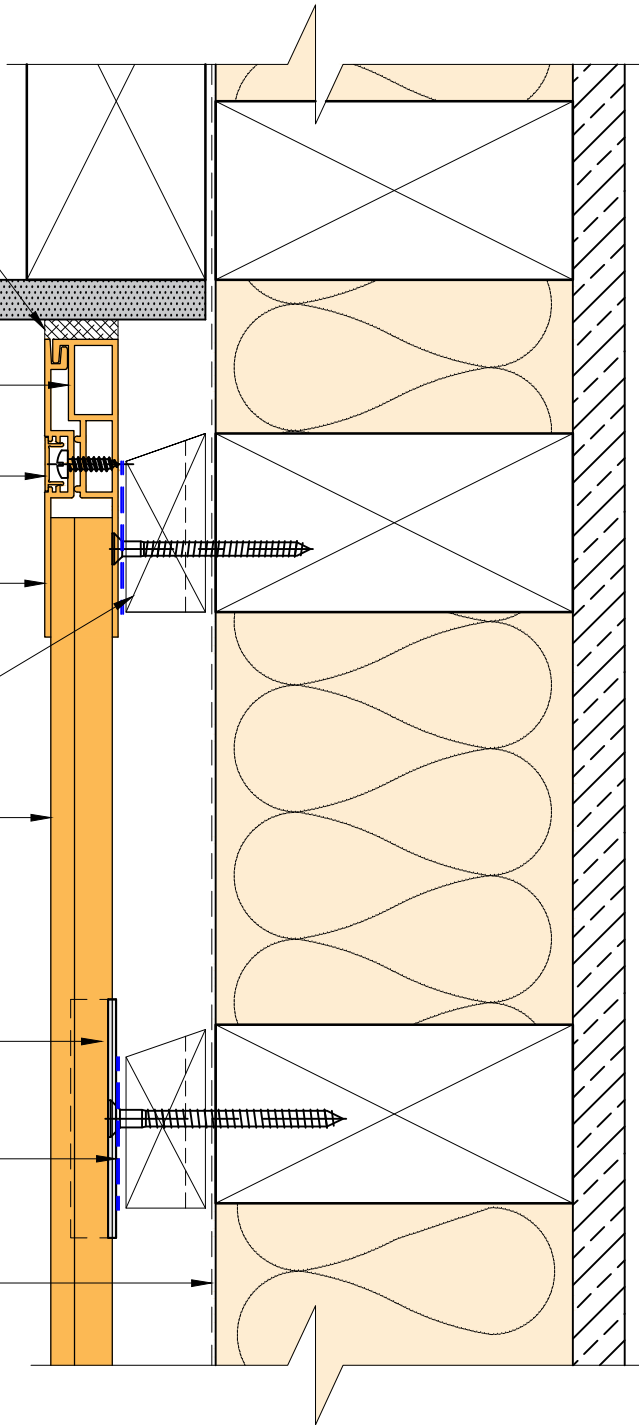
Horizontal battens

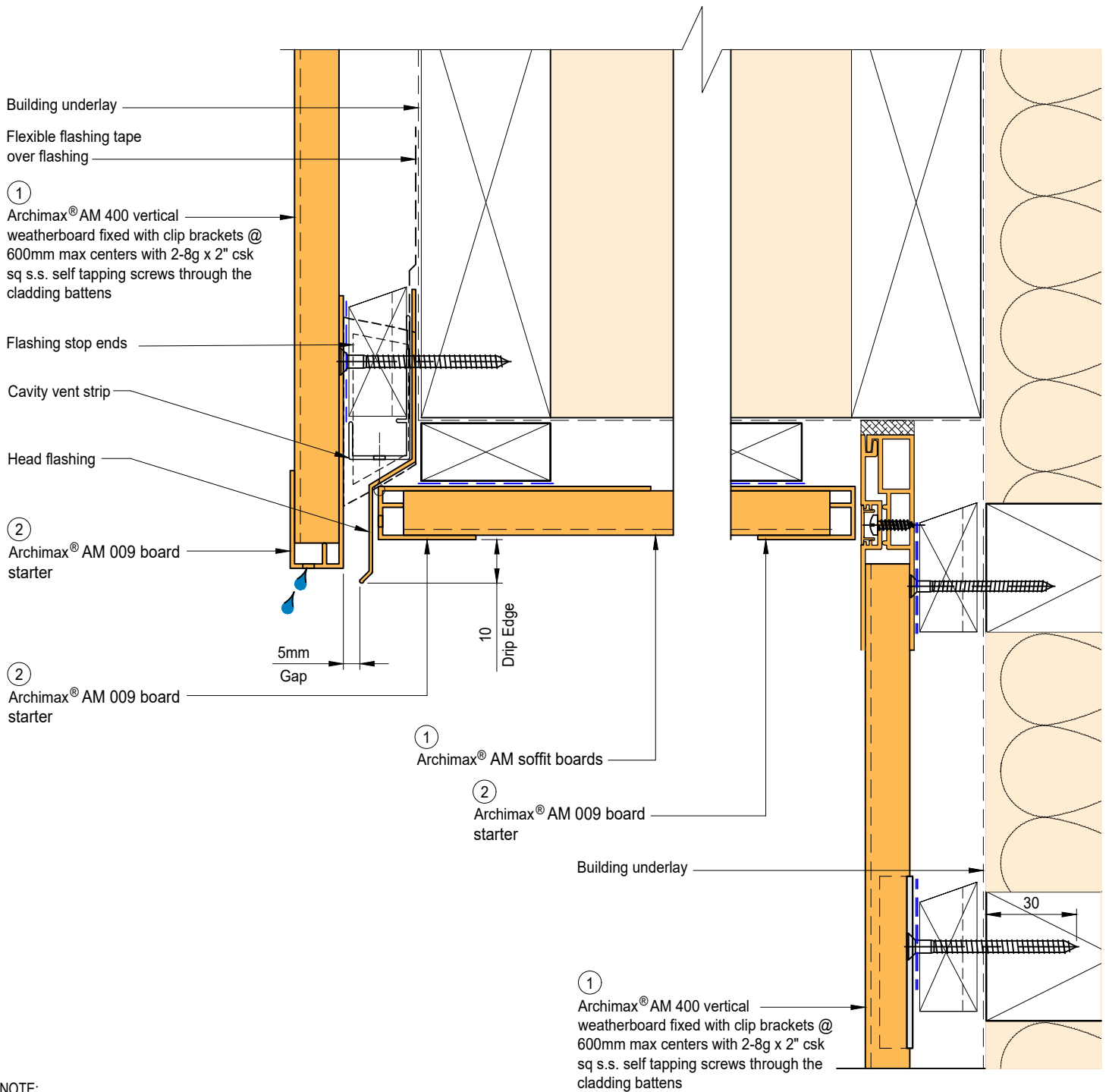
Archimax® AM 400 vertical weatherboard fixed with clip brackets @ 600mm max centers with 2-8g x 2" csk sq s.s. self tapping screws through the cladding battens (1)

Archimax® clip bracket AM 029

Black polyethylene underlay strip isolator (between aluminium & treated timber battens)


Building underlay

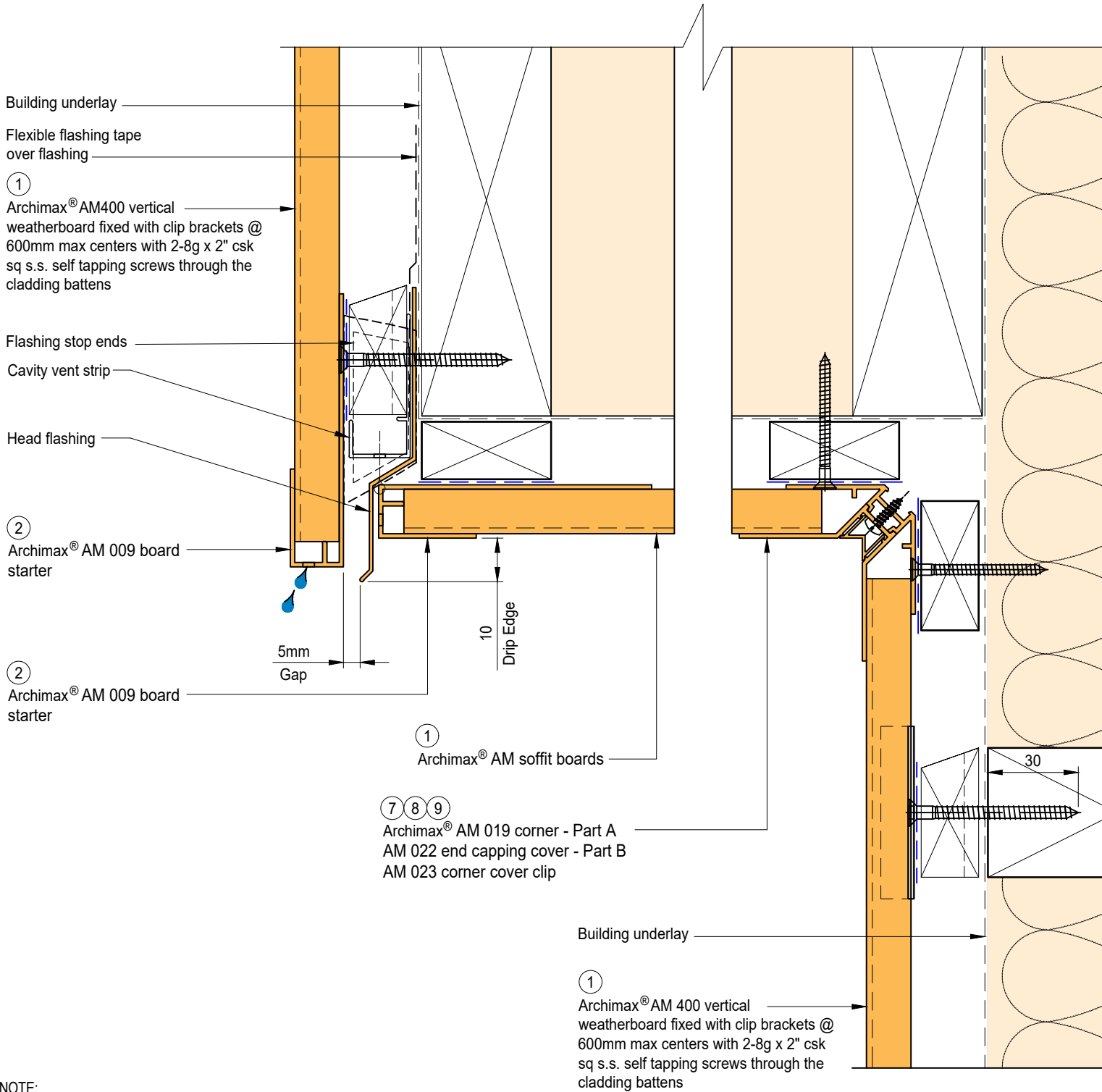




NOTE:
STOP ENDS TO BE INSTALLED AT FLASHING ENDS

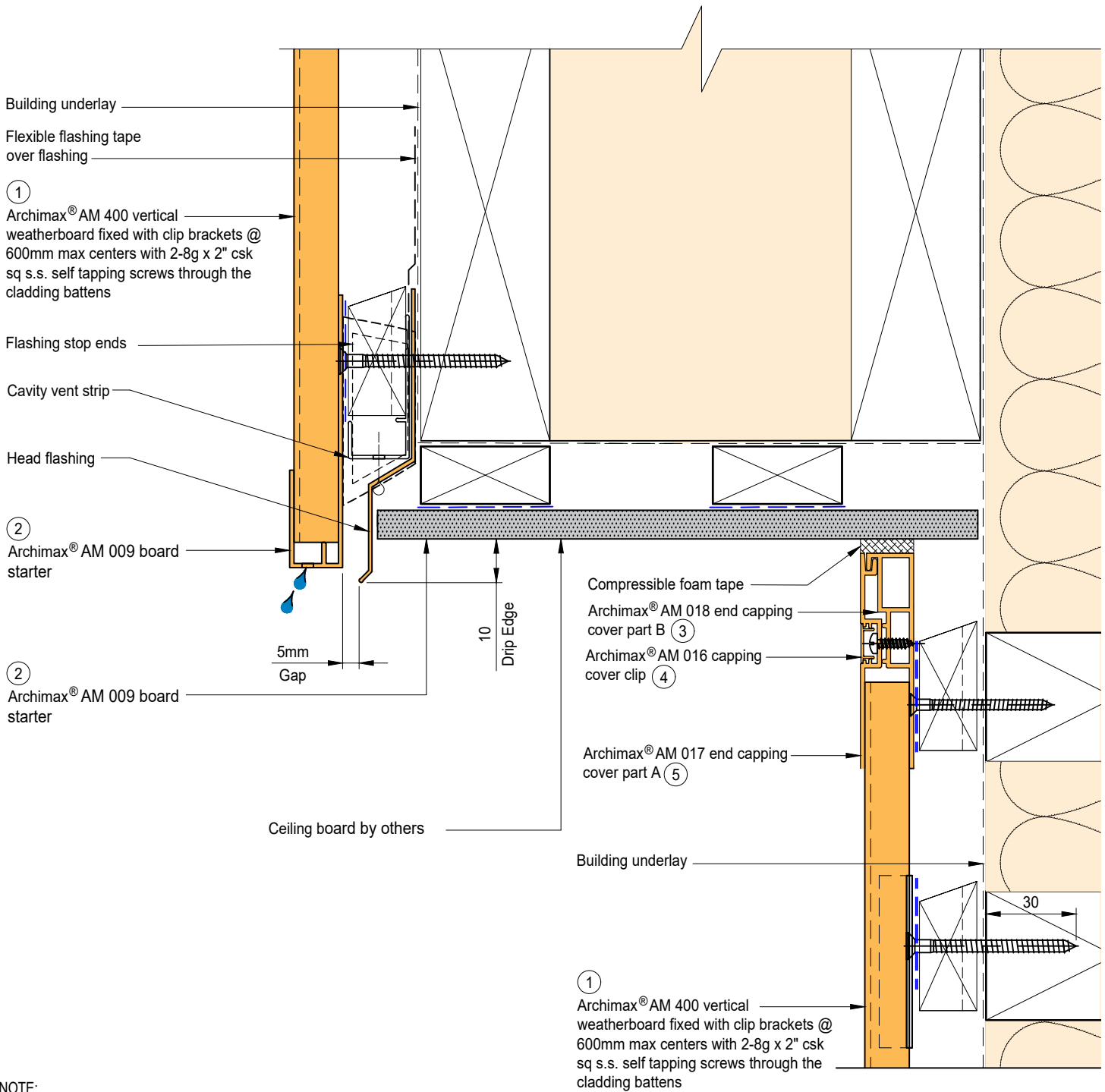


 <p>ARCHIMAX ALUMINIUM CLADDING SYSTEM <i>Creating more durable building envelopes</i> www.archimax.co.nz</p>	<p>System AM400 - VERTICAL WEATHERBOARD</p>	<p>Detail ARCHIMAX® FASCIA, SOFFIT & WALL DETAIL</p>	<p>Drawing No. Rev. AM-SO-V11.1 D</p>	
	<p>This drawing is the copyright of Archimax Limited. Modification of details for job specification requirements must be approved by Archimax Ltd. The building designer is ultimately responsible to ensure all building work is designed and constructed according to building code requirements, best code of practice industry guidelines. All components must be supplied by Archimax. Archimax reserves the right to alter or upgrade details at any time without prior notice.</p>		<p>Scale 1:2</p>	<p>Date NOV23</p>




NOTE:
STOP ENDS TO BE INSTALLED AT FLASHING ENDS

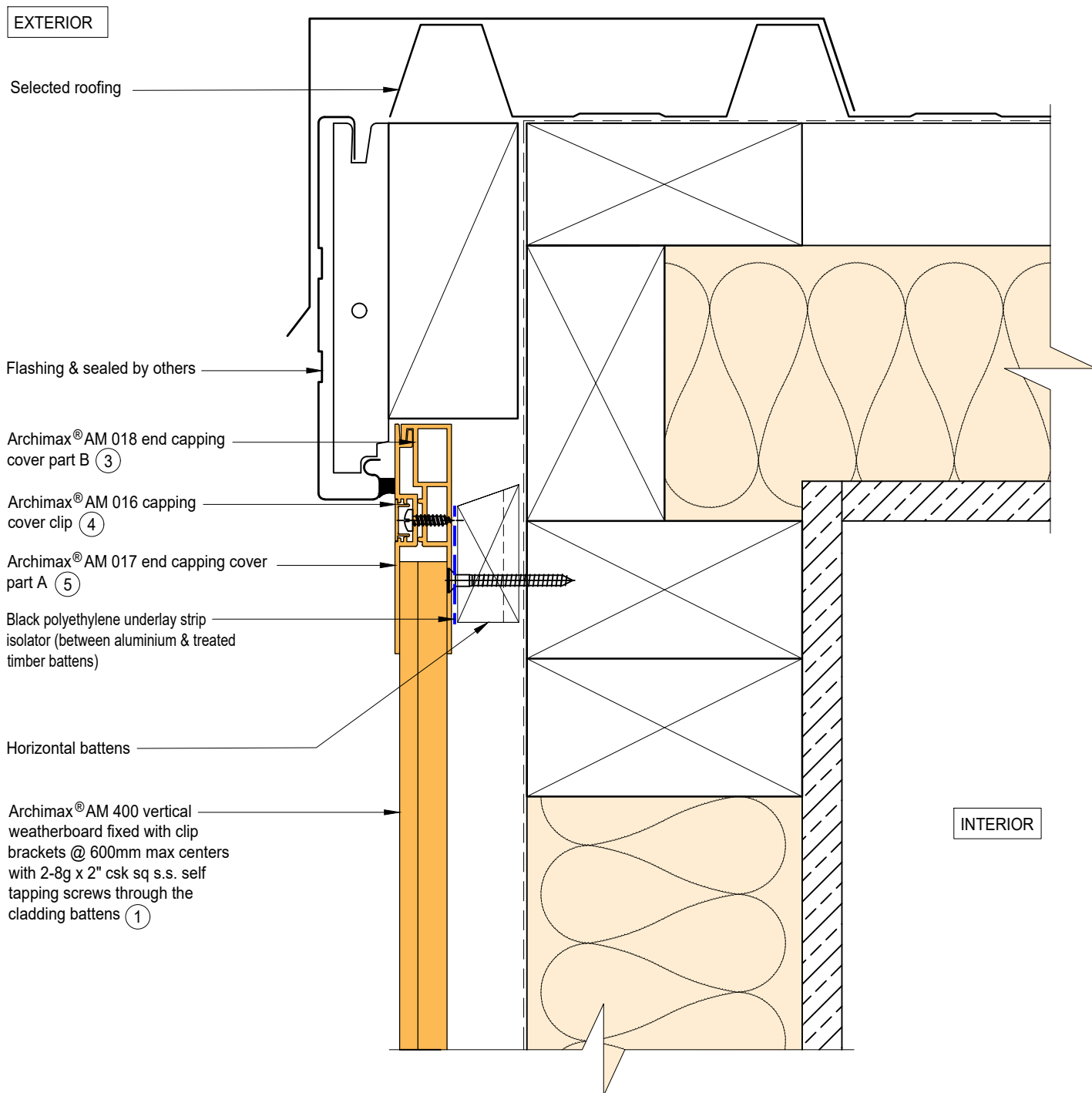


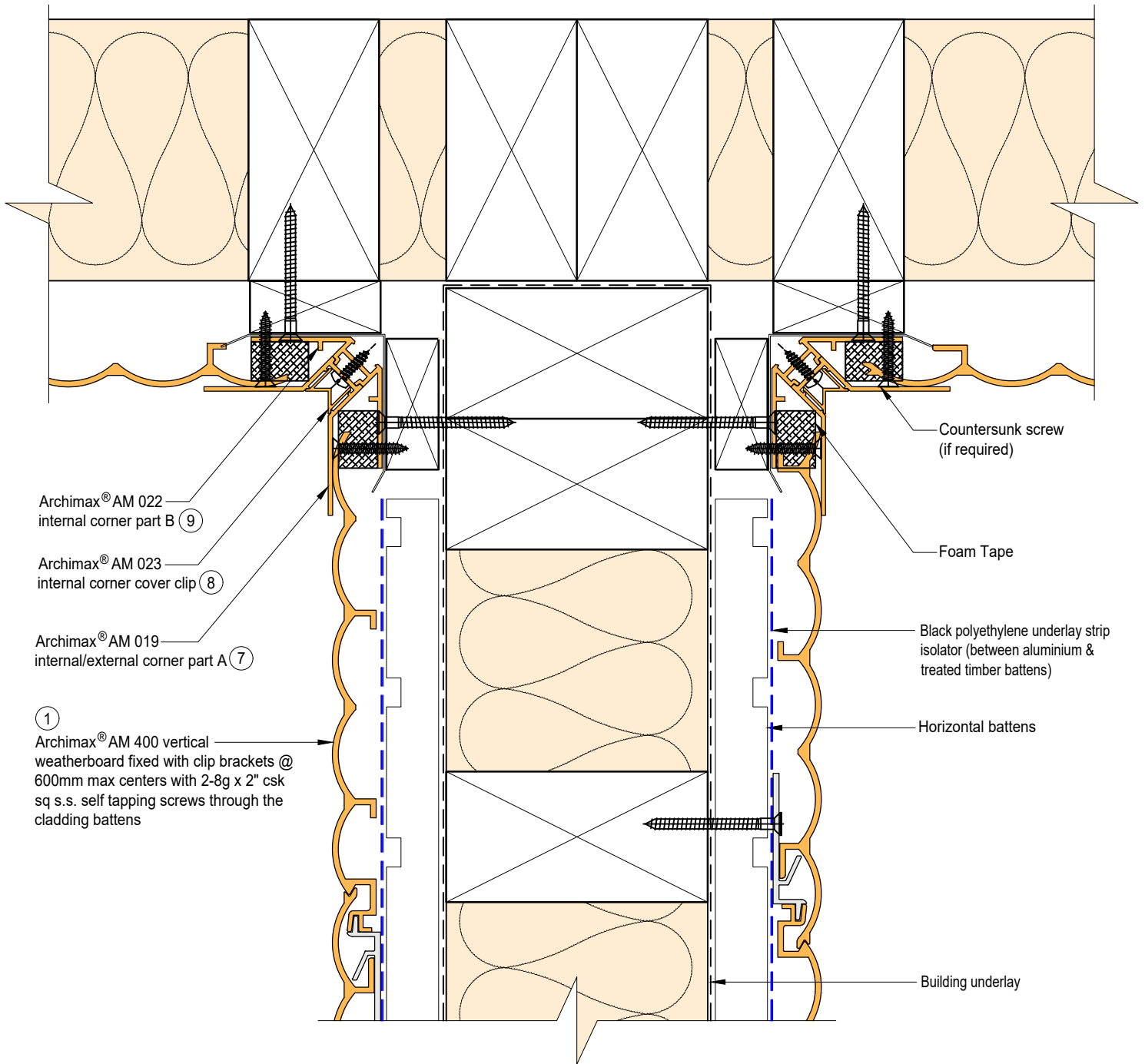



NOTE:
STOP ENDS TO BE INSTALLED AT FLASHING ENDS

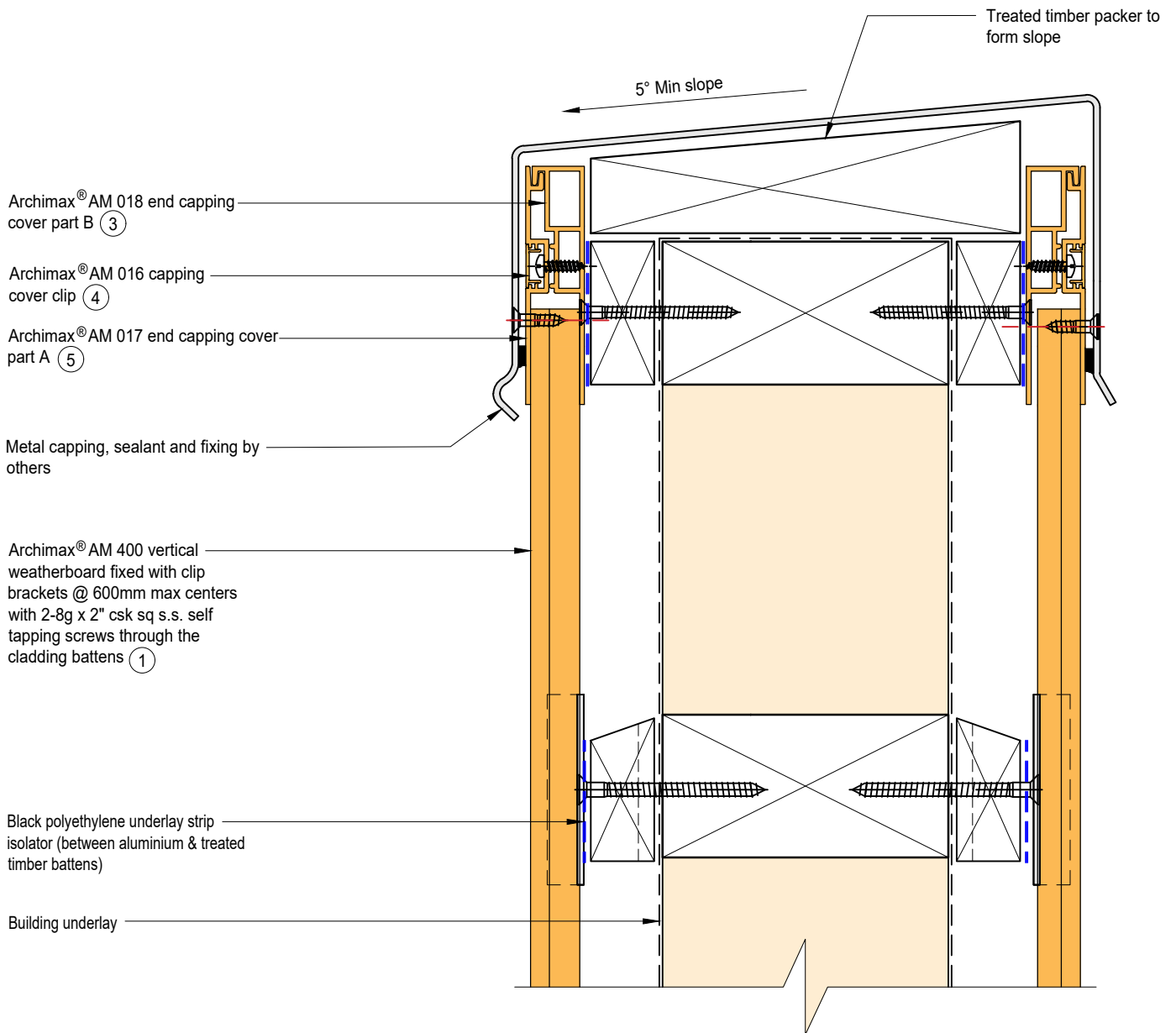


 <p>ARCHIMAX ALUMINIUM CLADDING SYSTEM <i>Creating more durable building envelopes</i> www.archimax.co.nz</p>	<p>System AM400 - VERTICAL WEATHERBOARD</p>	<p>Detail ARCHIMAX® FASCIA, SOFFIT & WALL DETAIL</p>	<p>Drawing No. Rev. AM-SO-V11.3 D</p>			
	<p>This drawing is the copyright of Archimax Limited. Modification of details for job specification requirements must be approved by Archimax Ltd. The building designer is ultimately responsible to ensure all building work is designed and constructed according to building code requirements, best code of practice industry guidelines. All components must be supplied by Archimax. Archimax reserves the right to alter or upgrade details at any time without prior notice.</p>		<table border="1"> <tr> <td>Scale</td> <td>Date</td> </tr> <tr> <td>1:2</td> <td>NOV23</td> </tr> </table>	Scale	Date	1:2
Scale	Date					
1:2	NOV23					





 <p>ARCHIMAX ALUMINIUM CLADDING SYSTEM <i>Creating more durable building envelopes</i> www.archimax.co.nz</p>	System AM400 - VERTICAL WEATHERBOARD	Detail ARCHIMAX® INTERNAL CORNER JUNCTION DETAIL	Drawing No. Rev. AM-BJ-V13 D
	<small>This drawing is the copyright of Archimax Limited. Modification of details for job specification requirements must be approved by Archimax Ltd. The building designer is ultimately responsible to ensure all building work is designed and constructed according to building code requirements, best code of practice industry guidelines. All components must be supplied by Archimax. Archimax reserves the right to alter or upgrade details at any time without prior notice.</small>		Scale Date 1:2 NOV23



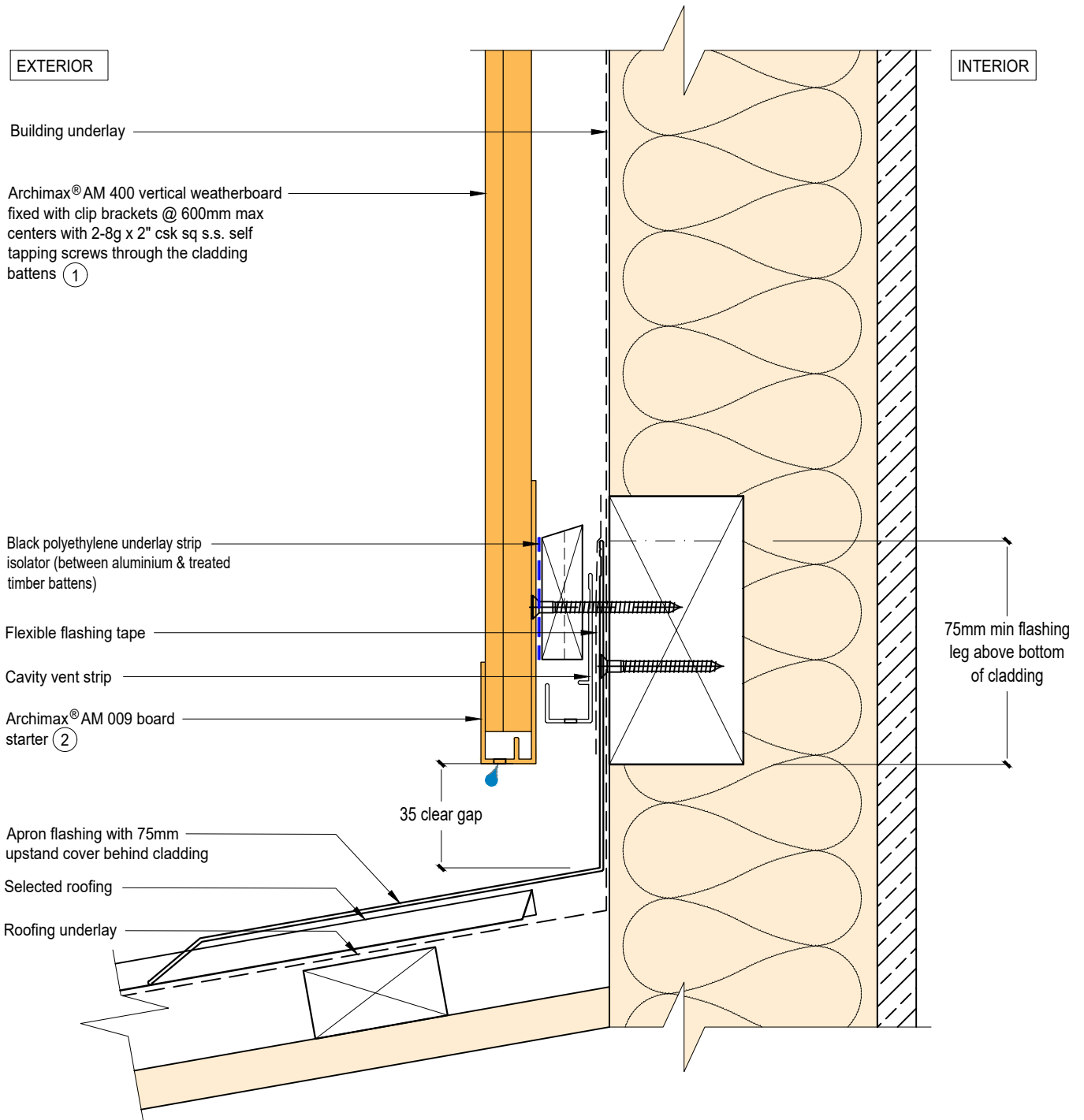

ARCHIMAX
ALUMINIUM CLADDING SYSTEM
Creating more durable building envelopes
www.archimax.co.nz


System
AM400 - VERTICAL WEATHERBOARD

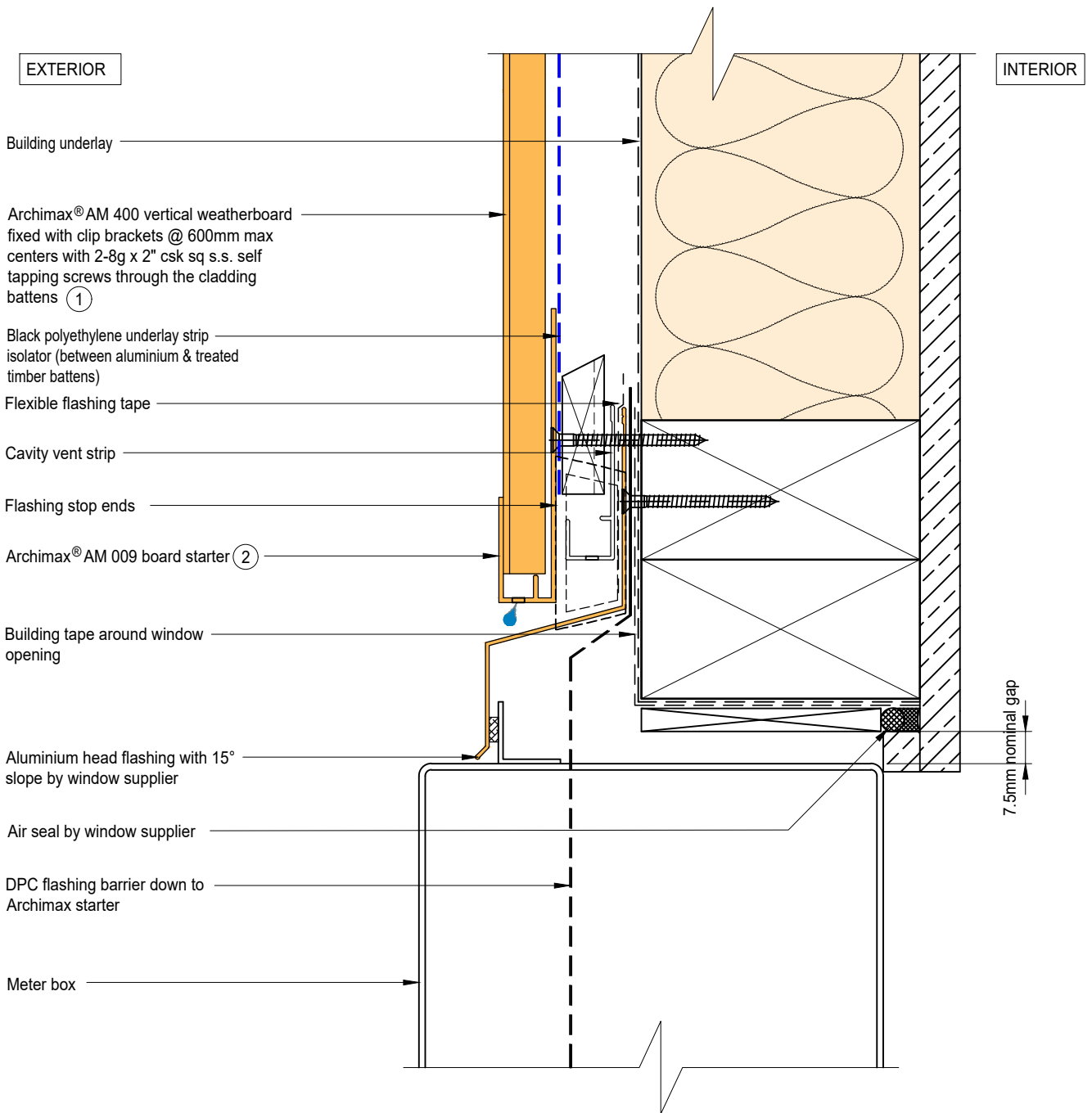
Detail
ARCHIMAX® PARAPET WITH CAVITY DETAIL

This drawing is the copyright of Archimax Limited. Modification of details for job specification requirements must be approved by Archimax Ltd. The building designer is ultimately responsible to ensure all building work is designed and constructed according to building code requirements, best code of practice industry guidelines. All components must be supplied by Archimax. Archimax reserves the right to alter or upgrade details at any time without prior notice.

Drawing No. Rev.	
AM-PAR-V14 D	
Scale	Date
1:2	NOV23




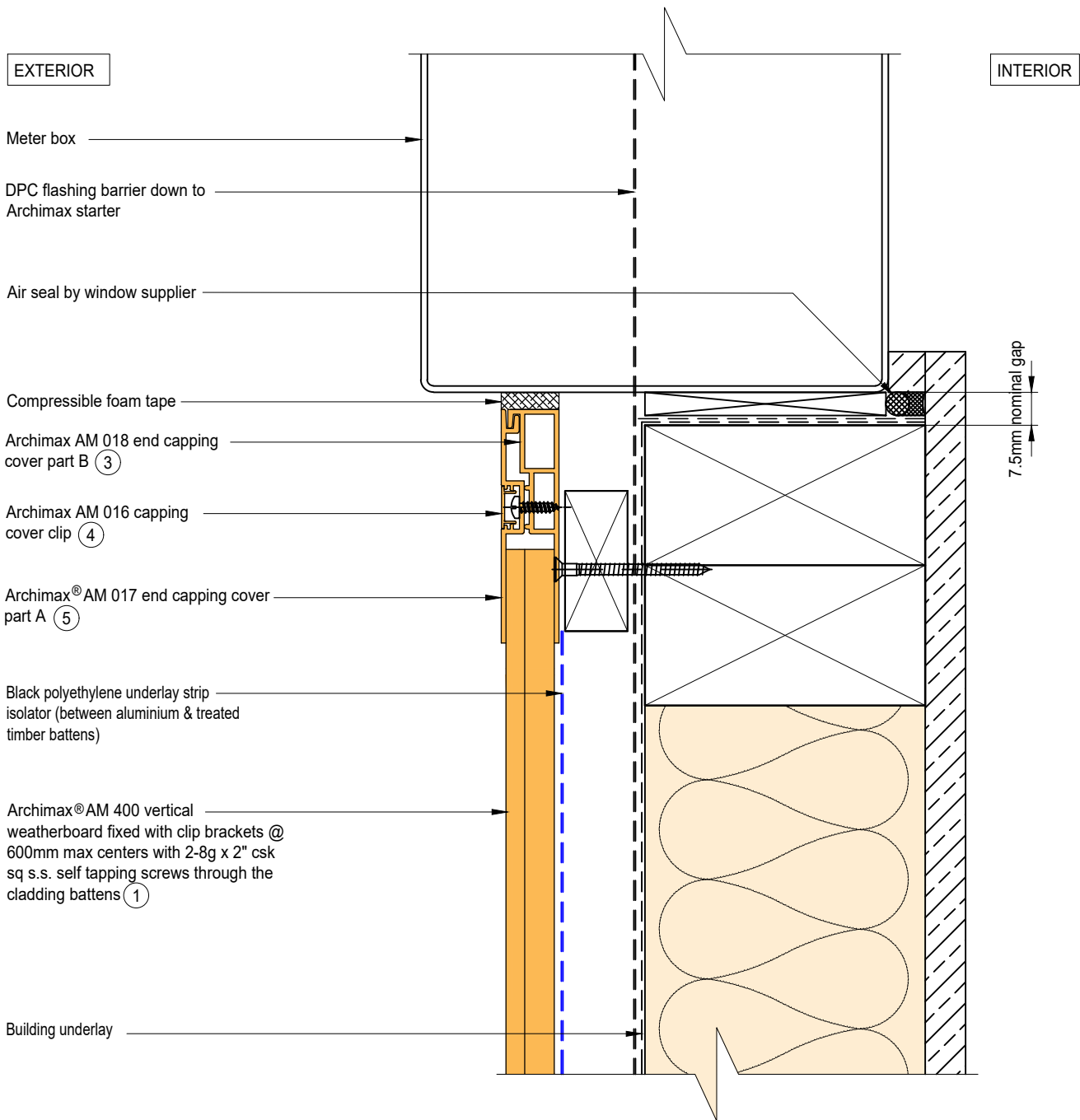
 <p>ARCHIMAX ALUMINIUM CLADDING SYSTEM <i>Creating more durable building envelopes</i> www.archimax.co.nz</p>	System AM400 - VERTICAL WEATHERBOARD	Detail ARCHIMAX® LOWER ROOF WALL JUNCTION DETAIL	Drawing No. Rev. AM-RW-V15 D
	<small>This drawing is the copyright of Archimax Limited. Modification of details for job specification requirements must be approved by Archimax Ltd. The building designer is ultimately responsible to ensure all building work is designed and constructed according to building code requirements, best code of practice industry guidelines. All components must be supplied by Archimax. Archimax reserves the right to alter or upgrade details at any time without prior notice.</small>		Scale Date 1:2 NOV23



NOTE:
STOP ENDS TO BE INSTALLED AT FLASHING ENDS

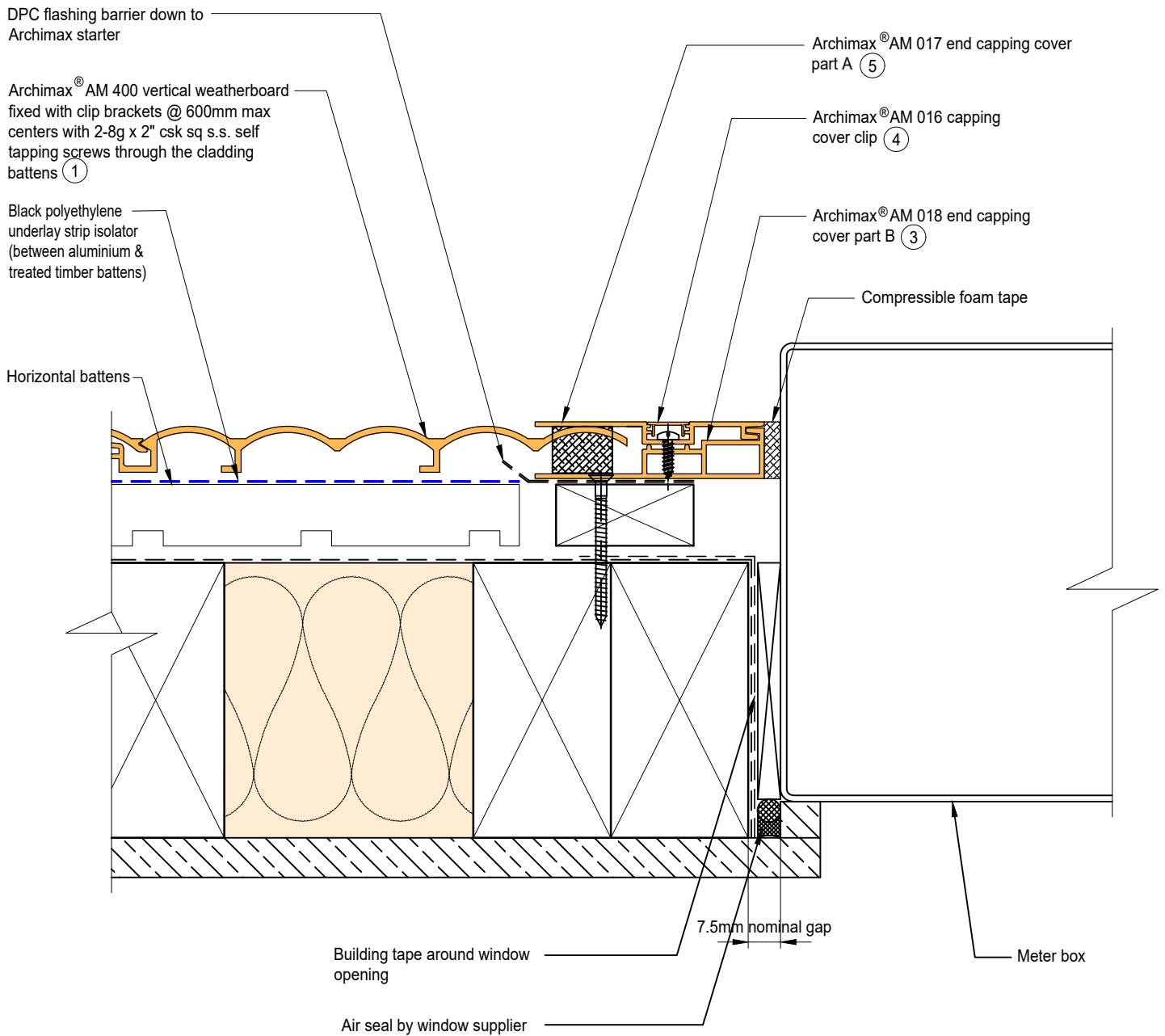


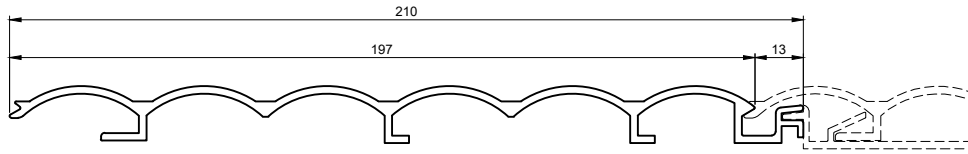
 <p>ARCHIMAX ALUMINIUM CLADDING SYSTEM <i>Creating more durable building envelopes</i> www.archimax.co.nz</p>	System AM400 - VERTICAL WEATHERBOARD	Detail ARCHIMAX® METER BOX HEAD DETAIL	Drawing No. Rev. AM-MB-V16 D
	<small>This drawing is the copyright of Archimax Limited. Modification of details for job specification requirements must be approved by Archimax Ltd. The building designer is ultimately responsible to ensure all building work is designed and constructed according to building code requirements, best code of practice industry guidelines. All components must be supplied by Archimax. Archimax reserves the right to alter or upgrade details at any time without prior notice.</small>		Scale Date 1:2 NOV23




ARCHIMAX
 ALUMINIUM CLADDING SYSTEM
Creating more durable building envelopes
www.archimax.co.nz

System AM400 - VERTICAL WEATHERBOARD	Detail ARCHIMAX® METER BOX SILL DETAIL	Drawing No. Rev. AM-MB-V17 D
<small>This drawing is the copyright of Archimax Limited. Modification of details for job specification requirements must be approved by Archimax Ltd. The building designer is ultimately responsible to ensure all building work is designed and constructed according to building code requirements, best code of practice industry guidelines. All components must be supplied by Archimax. Archimax reserves the right to alter or upgrade details at any time without prior notice.</small>		Scale 1:2 Date NOV23





①

AM 400 Archimax Horizontal / Vertical Weatherboard

<p>②</p>	<p>③</p>	<p>④</p>	<p>⑤</p>	<p>⑥</p>
<p>AM 009</p> <p>Board Starter</p>	<p>AM 018</p> <p>End Capping Part B</p>	<p>AM 016</p> <p>Jointer / Jamb / Sill Capping Cover Clip</p>	<p>AM 017</p> <p>End Capping Part A</p>	<p>AM 029</p> <p>Clip Bracket</p>
<p>⑨</p>	<p>⑧</p>	<p>⑨</p>	<p>⑪</p>	
<p>AM 019</p> <p>Internal/External Corner Part A</p>	<p>AM 023</p> <p>Internal Corner Cover Clip</p>	<p>AM 022</p> <p>Internal Corner Part B</p>	<p>AM 020</p> <p>External Cover Cover Clip</p>	