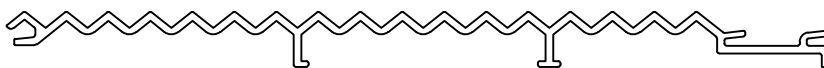


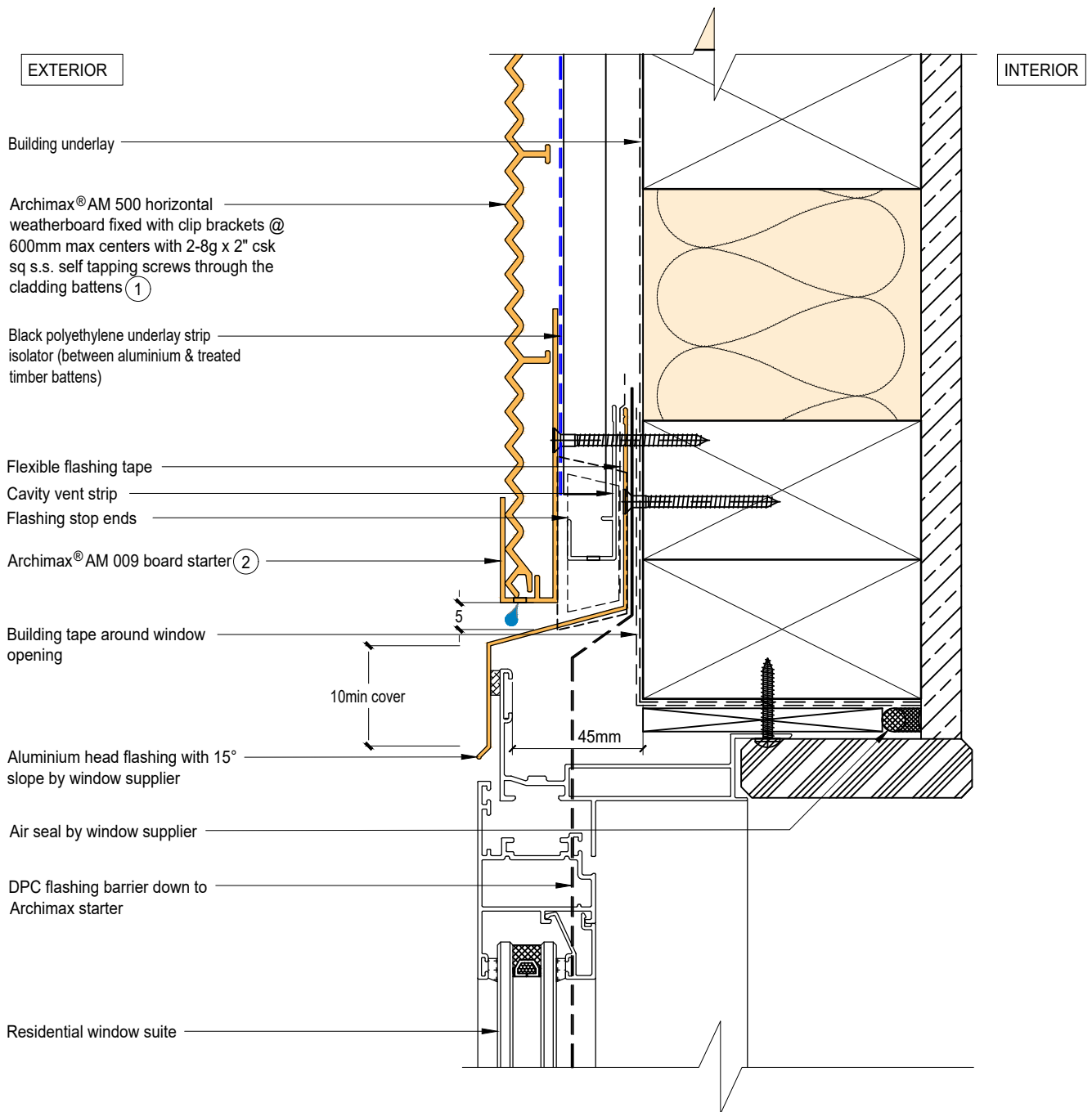


Archimax® Aluminium Cladding System  
AM500 Horizontal Profile - Installation Details

| Drawing No. | Rev | Description  |
|-------------|-----|--|
| AM-WH-H1    | D   | Archimax® Window Head Detail                             |
| AM-WS-H2.1  | D   | Archimax® Window Sill Detail                             |
| AM-WS-H2.2  | D   | Archimax® Window Sill Detail                             |
| AM-WJ-H3    | D   | Archimax® Window Jamb Detail                             |
| AM-EXT-H4   | D   | Archimax® External Corner Detail                         |
| AM-INT-H5   | D   | Archimax® Internal Corner Detail                         |
| AM-CBS-H6.1 | D   | Archimax® Concrete Floor Board Starter Detail – Timber   |
| AM-CBS-H6.2 | D   | Archimax® Concrete Floor Board Starter Detail –Fire Wall |
| AM-HJ-H7    | D   | Archimax® Horizontal Joint Detail                        |
| AM-DJ-H8    | D   | Archimax® Deck Junction Detail                           |
| AM-PP-H9A   | D   | Archimax® Pipe Penetration Plan View Detail              |
| AM-PP-H9B   | D   | Archimax® Pipe Penetration Section View Detail           |
| AM-SO-H10   | D   | Archimax® Soffit Detail                                  |
| AM-SO-H11.1 | D   | Archimax® Fascia, Soffit & Wall Detail                   |
| AM-SO-H11.2 | D   | Archimax® Fascia, Soffit & Wall Detail (90° Soffit/Wall) |
| AM-SO-H11.3 | D   | Archimax® Fascia, Board Soffit & Wall Detail             |
| AM-SO-H12   | D   | Archimax® Non-Soffit Detail                              |
| AM-BJ-H13   | D   | Archimax® Internal Corner Junction Detail                |
| AM-PAR-H14  | D   | Archimax® Parapet with Cavity Detail                     |
| AM-RW-H15   | D   | Archimax® Lower Roof Wall Junction Detail                |
| AM-MB-H16   | D   | Archimax® Meter Box Head Detail                          |
| AM-MB-H17   | D   | Archimax® Meter Box Sill Detail                          |
| AM-MB-H18   | D   | Archimax® Meter Box Jamb Detail                          |
| AM-MB-H19   | D   | Archimax® Vertical Joint Detail                          |




AM500  
Coverage: 195mm

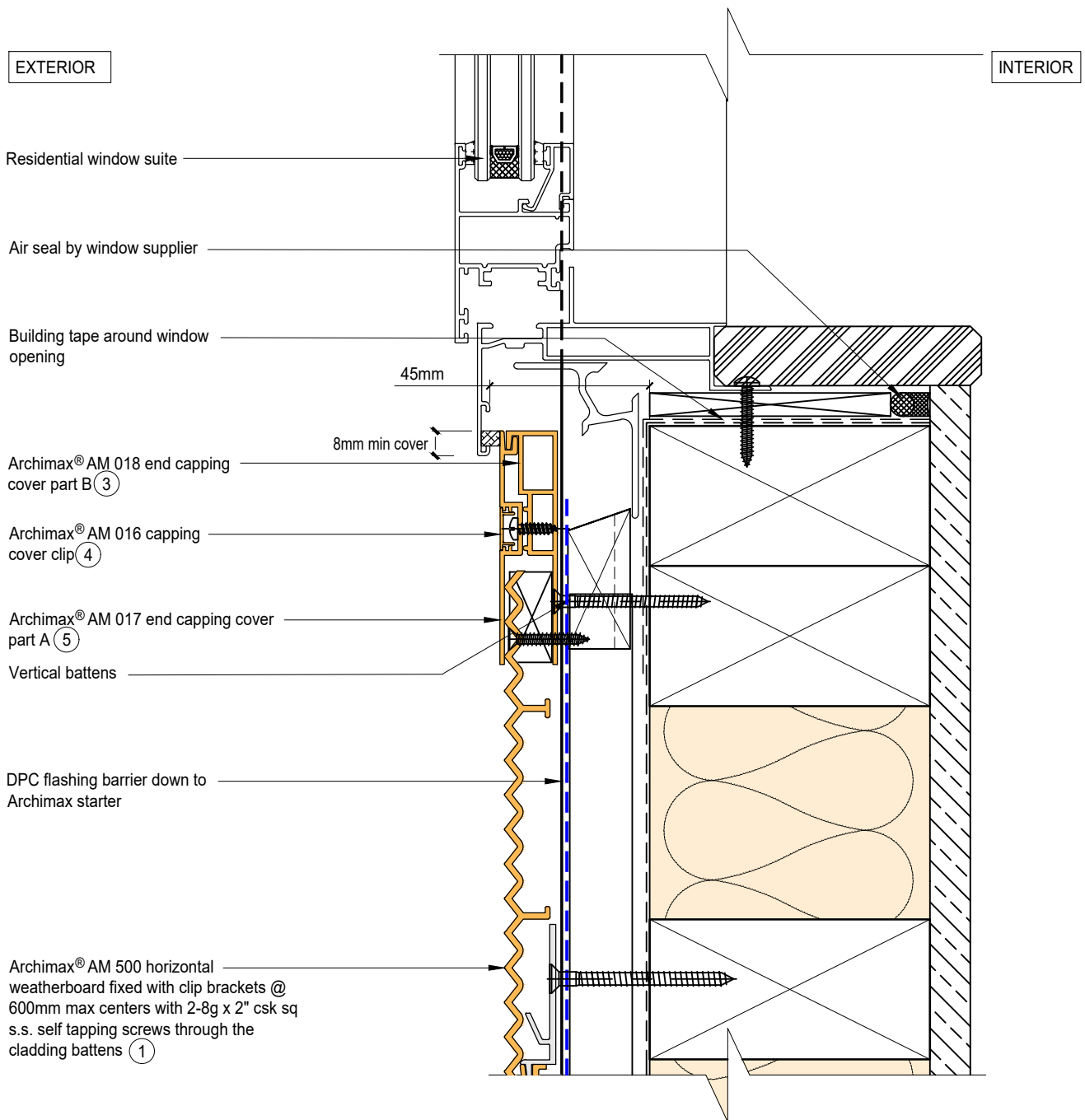


**NOTE:**

1. Stop ends to be installed at flashing ends
2. Minimum clearance between the AIR BARRIER and the WINDOW JOINERY to be 45mm. Window joinery should not be permanently fixed until cladding been installed.




|  |   |  |  |
|--|---|--|--|
|  <p><b>ARCHIMAX</b><br/>ALUMINIUM CLADDING SYSTEM<br/><i>Creating more durable building envelopes</i><br/>www.archimax.co.nz</p> | <p>System<br/>AM 500 - HORIZONTAL WEATHERBOARD</p>  | <p>Detail<br/>ARCHIMAX® WINDOW HEAD DETAIL</p> | <p>Drawing No. Rev.<br/>AM-WH-H1 D</p> |
|  | <p>This drawing is the copyright of Archimax Limited. Modification of details for job specification requirements must be approved by Archimax Ltd. The building designer is ultimately responsible to ensure all building work is designed and constructed according to building code requirements, best code of practice industry guidelines. All components must be supplied by Archimax. Archimax reserves the right to alter or upgrade details at any time without prior notice.</p> |  | <p>Scale Date<br/>1:2 NOV23</p>        |

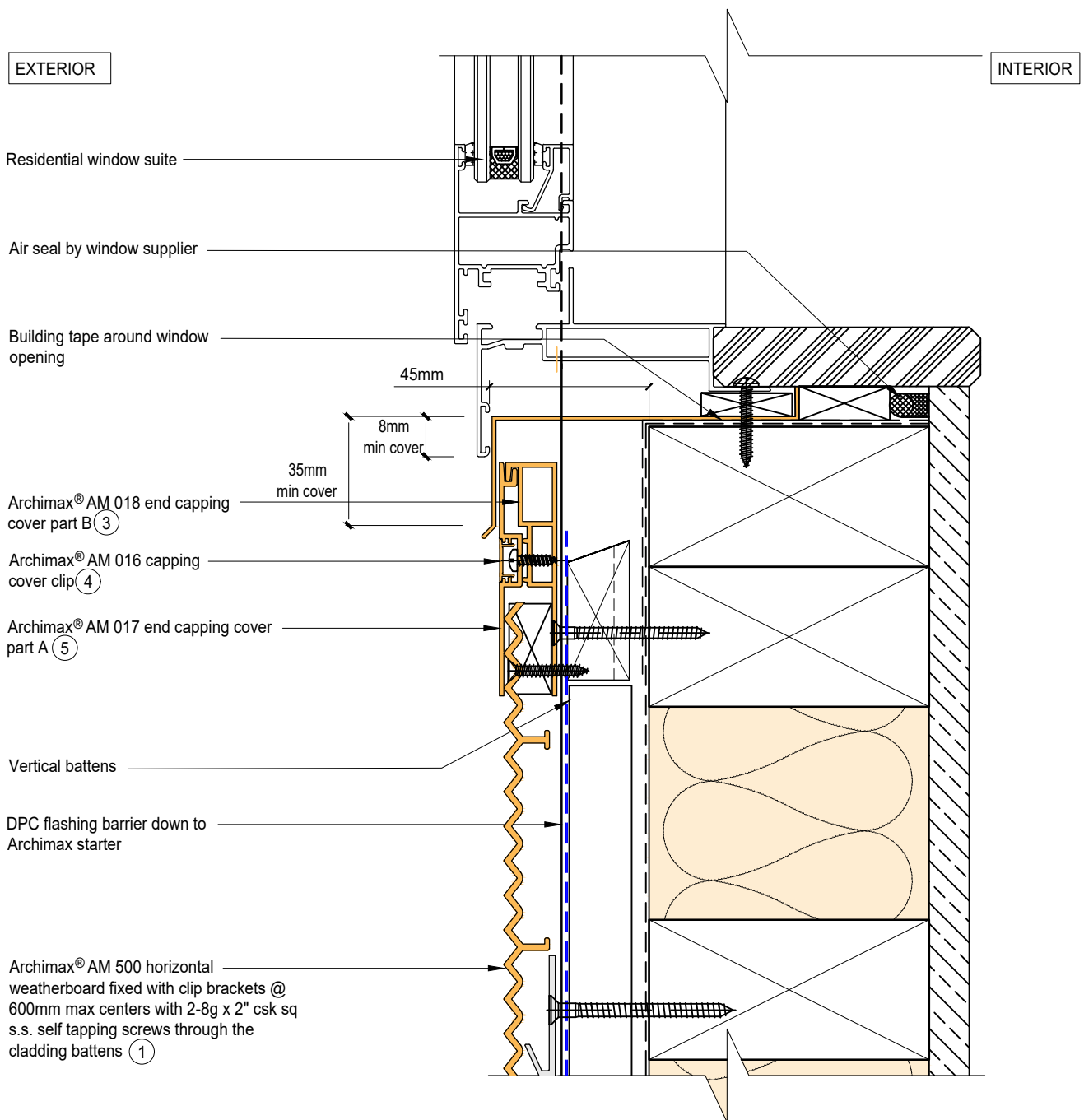


NOTE:

1. Minimum clearance between the AIR BARRIER and the WINDOW JOINERY to be 45mm. Window joinery should not be permanently fixed until cladding been installed.




|  |   |  |  |
|--|---|--|--|
|  <p>ARCHIMAX<br/>ALUMINIUM CLADDING SYSTEM<br/>Creating more durable building envelopes<br/>www.archimax.co.nz</p> | <p>System<br/>AM 500 - HORIZONTAL WEATHERBOARD</p>  | <p>Detail<br/>ARCHIMAX® WINDOW SILL DETAIL</p> | <p>Drawing No. Rev.<br/>AM-WS-H2.1 D</p> |
|  | <p>This drawing is the copyright of Archimax Limited. Modification of details for job specification requirements must be approved by Archimax Ltd. The building designer is ultimately responsible to ensure all building work is designed and constructed according to building code requirements, best code of practice industry guidelines. All components must be supplied by Archimax. Archimax reserves the right to alter or upgrade details at any time without prior notice.</p> |  | <p>Scale Date<br/>1:2 NOV23</p>          |



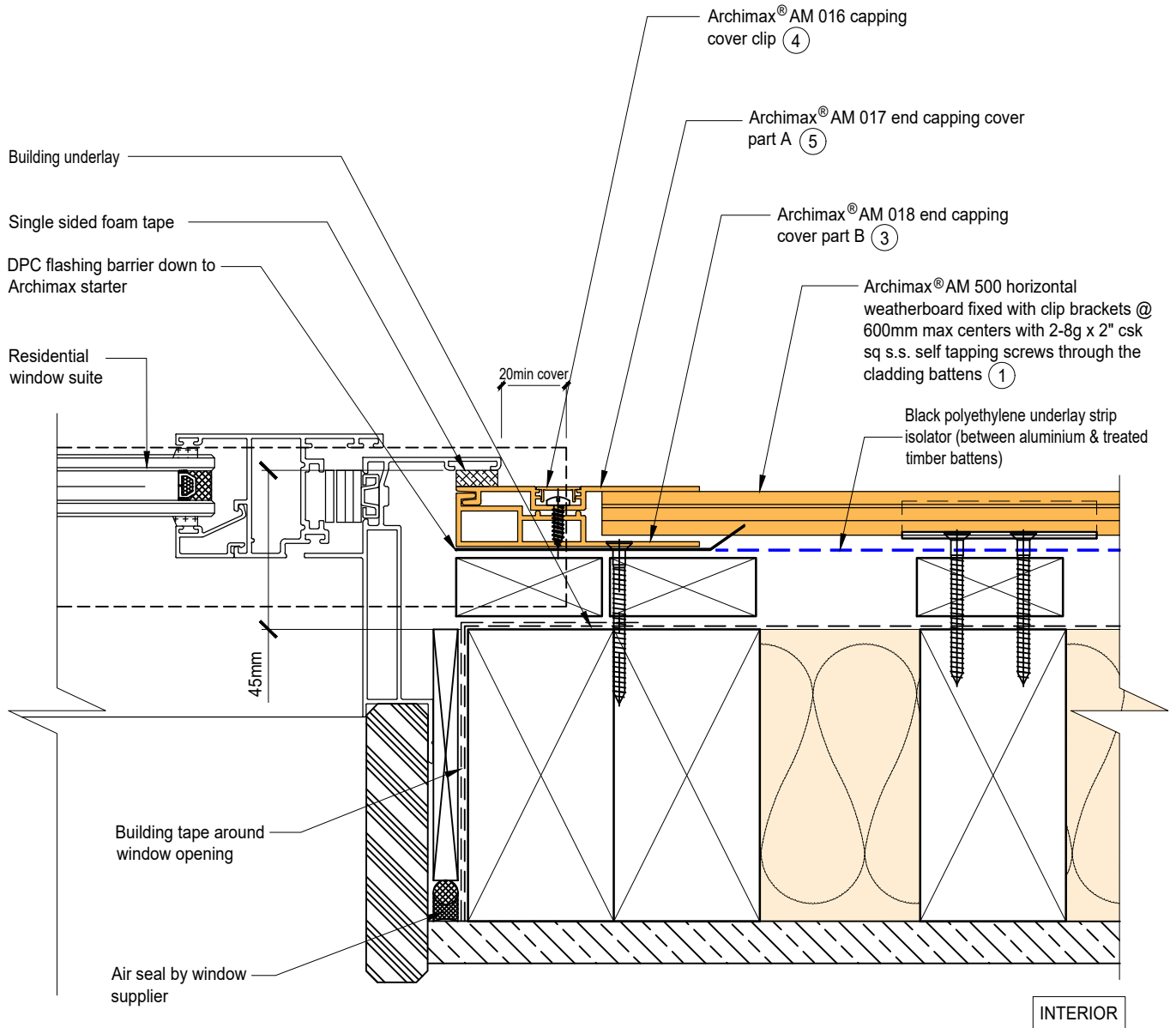
NOTE:

1. Minimum clearance between the AIR BARRIER and the WINDOW JOINERY to be 45mm. Window joinery should not be permanently fixed until cladding been installed.



|  |   |  |  |
|--|---|--|--|
|  <p>ARCHIMAX<br/>ALUMINIUM CLADDING SYSTEM<br/>Creating more durable building envelopes<br/>www.archimax.co.nz</p> | <p>System<br/>AM 500 - HORIZONTAL WEATHERBOARD</p>  | <p>Detail<br/>ARCHIMAX® WINDOW SILL DETAIL</p> | <p>Drawing No. Rev.<br/>AM-WS-H2 D</p> |
|  | <p>This drawing is the copyright of Archimax Limited. Modification of details for job specification requirements must be approved by Archimax Ltd. The building designer is ultimately responsible to ensure all building work is designed and constructed according to building code requirements, best code of practice industry guidelines. All components must be supplied by Archimax. Archimax reserves the right to alter or upgrade details at any time without prior notice.</p> |  | <p>Scale Date<br/>1:2 NOV23</p>        |


EXTERIOR



NOTE:

1. Minimum clearance between the AIR BARRIER and the WINDOW JOINERY to be 45mm. Window joinery should not be permanently fixed until cladding been installed.



|  |   |  |  |
|--|---|--|--|
|  <p><b>ARCHIMAX</b><br/>ALUMINIUM CLADDING SYSTEM<br/><i>Creating more durable building envelopes</i><br/>www.archimax.co.nz</p> | <p>System<br/>AM 500 - HORIZONTAL WEATHERBOARD</p>  | <p>Detail<br/>ARCHIMAX® WINDOW JAMB DETAIL</p> | <p>Drawing No. Rev.<br/>AM-WJ-H3 D</p> |
|  | <p>This drawing is the copyright of Archimax Limited. Modification of details for job specification requirements must be approved by Archimax Ltd. The building designer is ultimately responsible to ensure all building work is designed and constructed according to building code requirements, best code of practice industry guidelines. All components must be supplied by Archimax. Archimax reserves the right to alter or upgrade details at any time without prior notice.</p> |  | <p>Scale Date<br/>1:2 NOV23</p>        |

EXTERIOR

INTERIOR

Building Underlay

Archimax® AM 500 horizontal weatherboard fixed with clip brackets @ 600mm max centers with 2-8g x 2" csk sq s.s. self tapping screws through the cladding battens ①

Black polyethylene underlay strip isolator (between aluminium & treated timber battens)

Vertical battens

Archimax® clip bracket AM 029

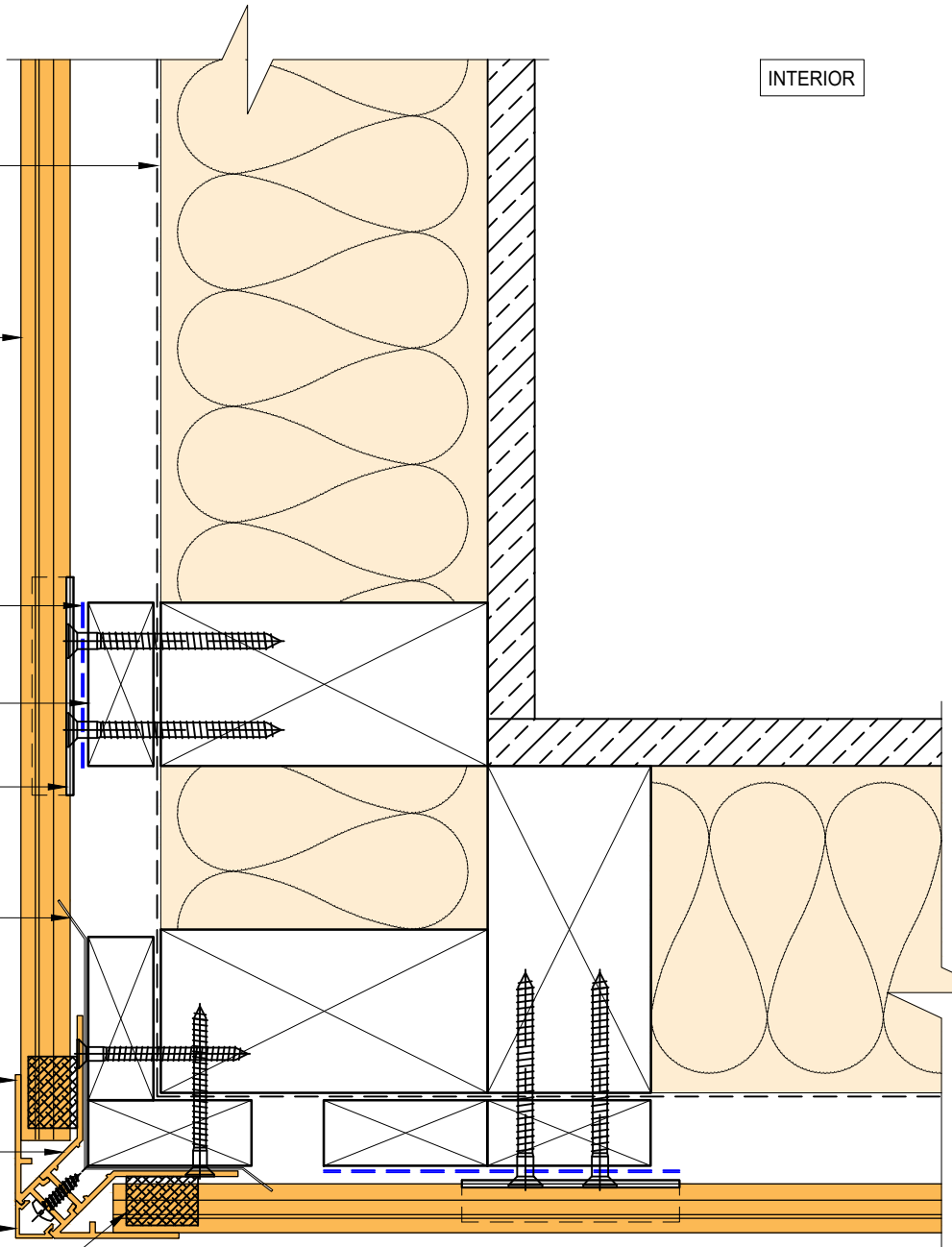
DPC flashing barrier down to Archimax starter

Archimax AM 019 internal/external corner part A ⑦

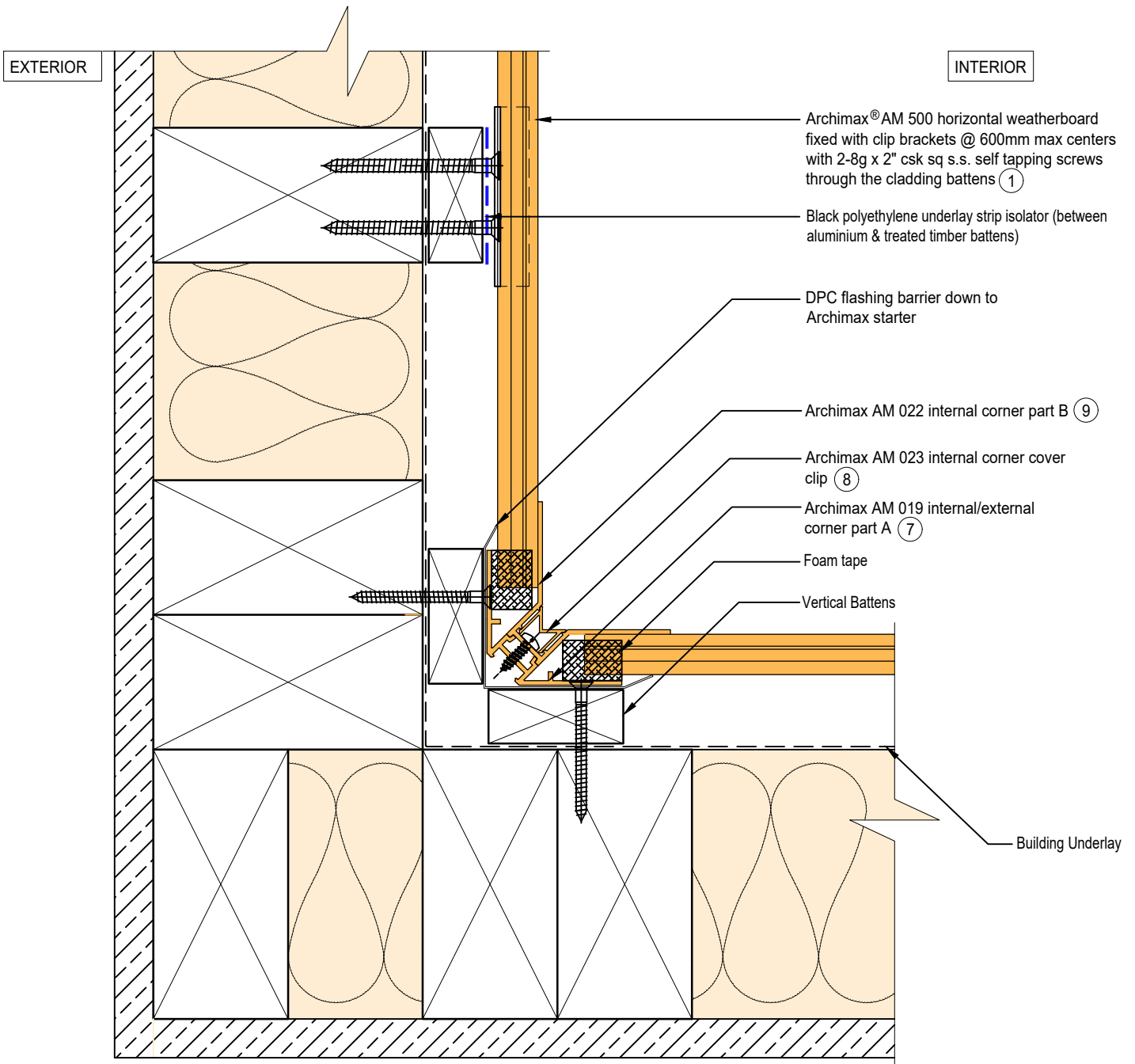
Archimax AM 022 internal corner part B ⑨


Archimax AM 020 external corner cover clip ⑪

Foam Tape



BRANZ Appraised  
Appraisal No. 1173 [2021]



|  |   |  |   |
|--|---|--|---|
|  <p><b>ARCHIMAX</b><br/>ALUMINIUM CLADDING SYSTEM<br/><i>Creating more durable building envelopes</i><br/>www.archimax.co.nz</p> | <p>System<br/>AM 500 - HORIZONTAL WEATHERBOARD</p>  | <p>Detail<br/>ARCHIMAX® INTERNAL CORNER DETAIL</p> | <p>Drawing No. Rev.<br/>AM-INT-H5 D</p> |
|  | <p>This drawing is the copyright of Archimax Limited. Modification of details for job specification requirements must be approved by Archimax Ltd. The building designer is ultimately responsible to ensure all building work is designed and constructed according to building code requirements, best code of practice industry guidelines. All components must be supplied by Archimax. Archimax reserves the right to alter or upgrade details at any time without prior notice.</p> |  | <p>Scale Date<br/>1:2 NOV23</p>         |

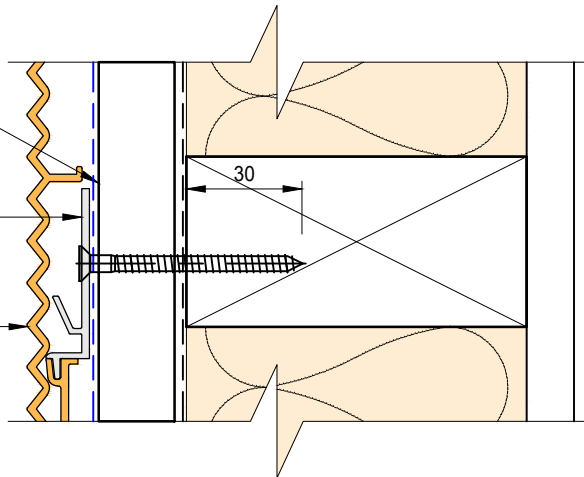
EXTERIOR

INTERIOR

Castellated timber batten (Vertical)

Archimax® clip bracket AM 029

① Archimax® AM500 horizontal weatherboard fixed with clip brackets @ 600mm max centers with 2-8g x 2" csk sq s.s. self tapping screws through the cladding battens



Building underlay

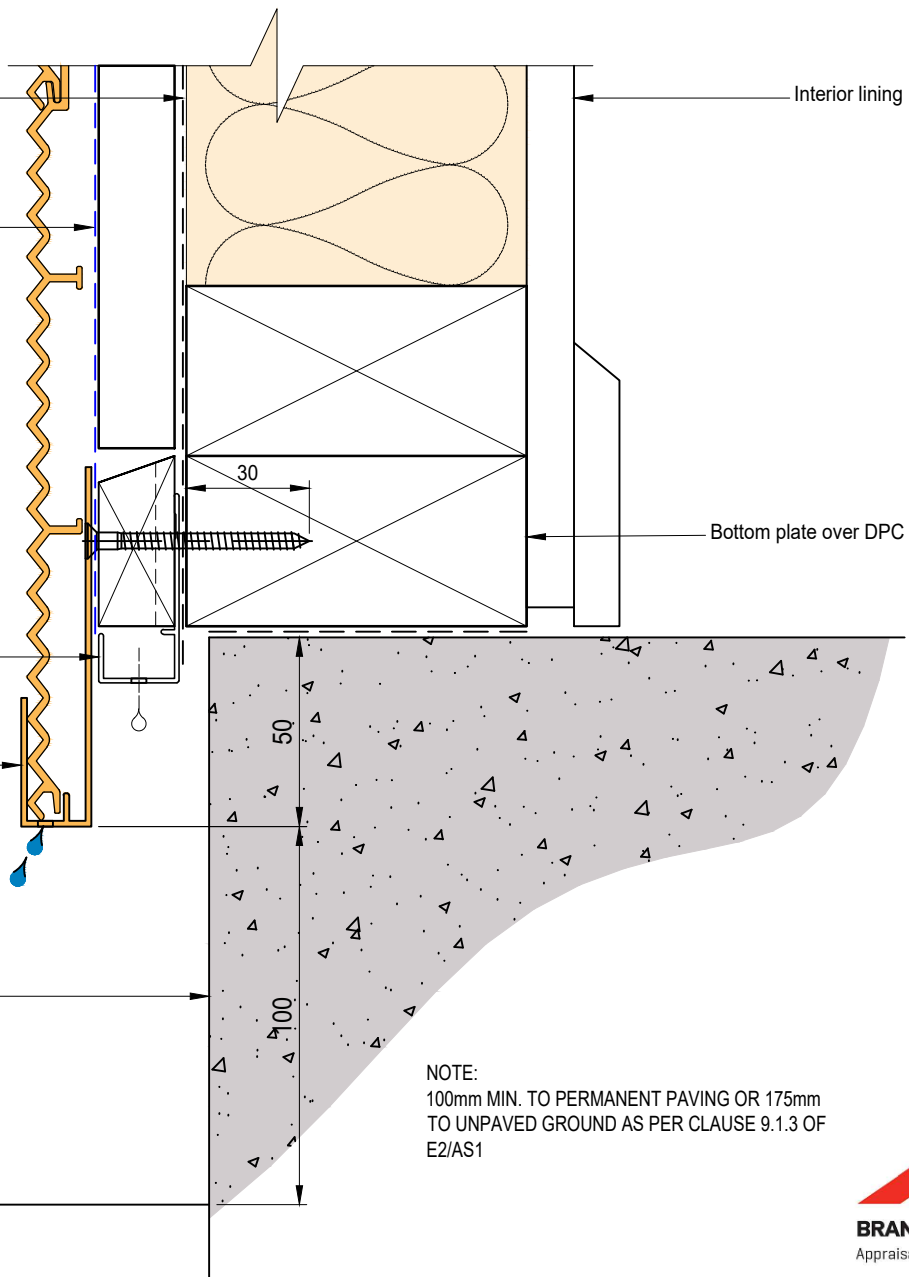
Black polyethylene underlay strip isolator (between aluminium & treated timber battens)

Cavity vent strip (By others)

② Archimax® AM 009 board starter

Concrete slab or brickwork (By others)

Finish ground level



NOTE:  
100mm MIN. TO PERMANENT PAVING OR 175mm  
TO UNPAVED GROUND AS PER CLAUSE 9.1.3 OF  
E2/AS1



System  
AM 500 - HORIZONTAL  
WEATHERBOARD

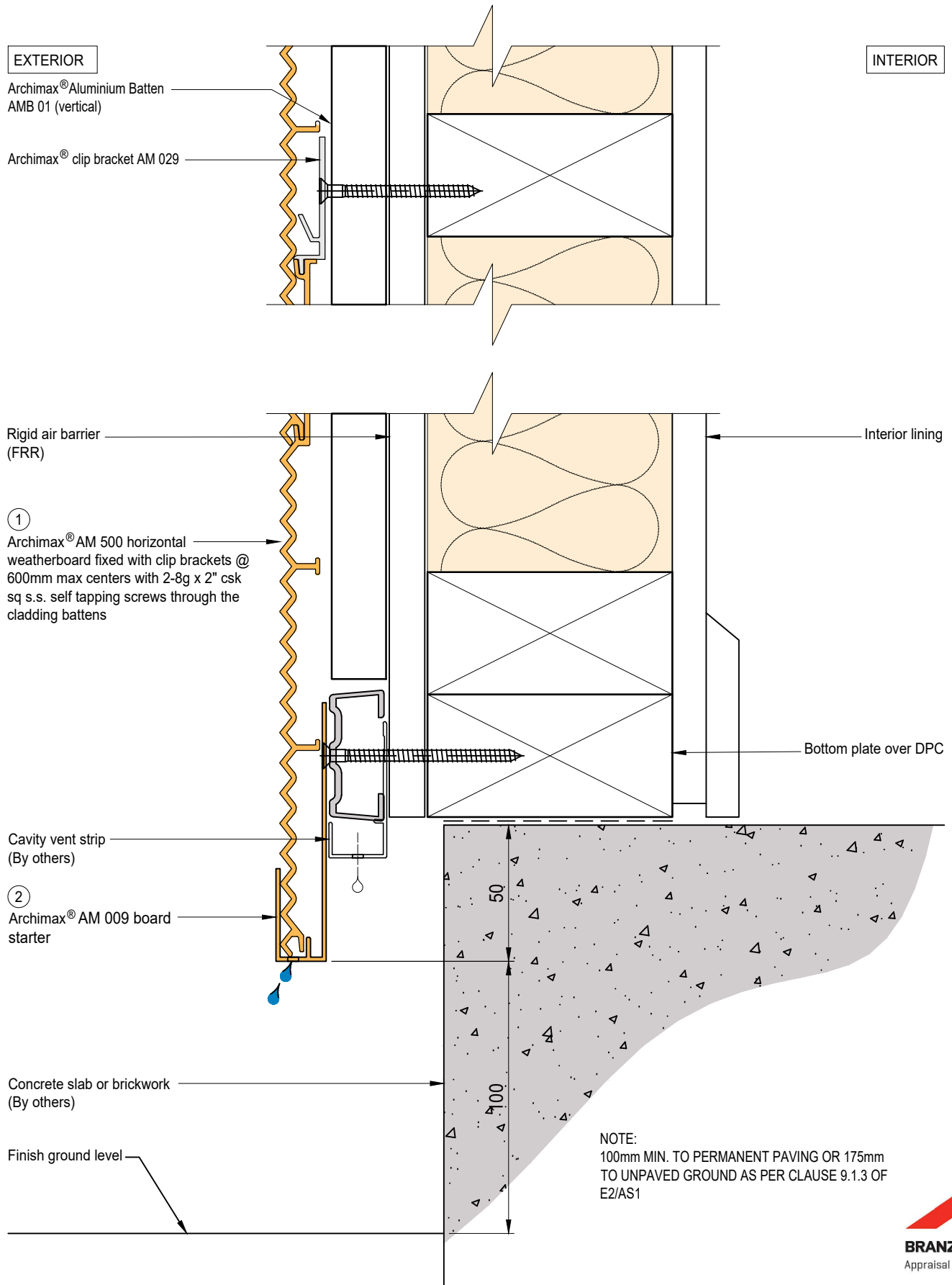
Detail  
ARCHIMAX® CONCRETE FLOOR  
BOARD STARTER DETAIL - TIMBER


Drawing No. Rev.  
AM-CBS-H6.1 D

This drawing is the copyright of Archimax Limited. Modification of details for job specification requirements must be approved by Archimax Ltd. The building designer is ultimately responsible to ensure all building work is designed and constructed according to building code requirements, best code of practice industry guidelines. All components must be supplied by Archimax. Archimax reserves the right to alter or upgrade details at any time without prior notice.

Scale Date  
1:2 NOV23



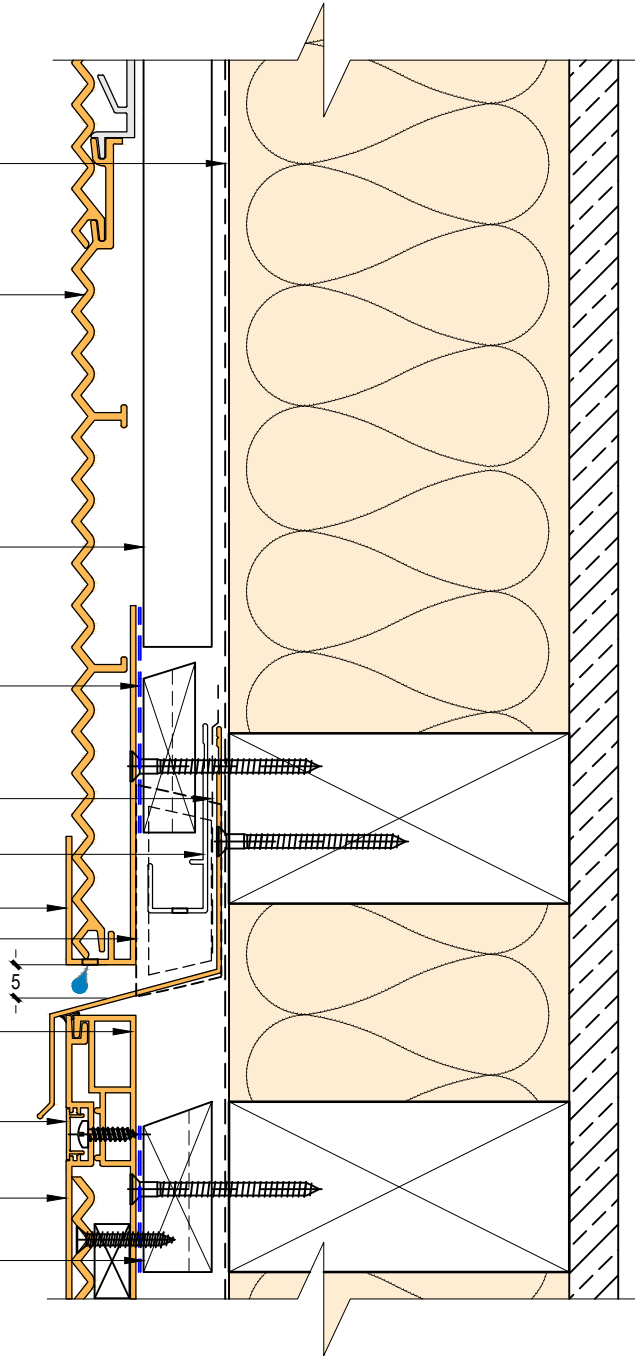


|   |   |   |   |
|---|---|---|---|
|  <p><b>ARCHIMAX</b><br/>ALUMINIUM CLADDING SYSTEM<br/>Creating more durable building envelopes<br/>www.archimax.co.nz</p> | <p>System<br/>AM 500 - HORIZONTAL WEATHERBOARD</p>  | <p>Detail<br/>ARCHIMAX® CONCRETE FLOOR BOARD STARTER DETAIL-FIRE WALL</p> | <p>Drawing No. Rev.<br/>AM-CBS-H6.2 D</p> |
|   | <p>This drawing is the copyright of Archimax Limited. Modification of details for job specification requirements must be approved by Archimax Ltd. The building designer is ultimately responsible to ensure all building work is designed and constructed according to building code requirements, best code of practice industry guidelines. All components must be supplied by Archimax. Archimax reserves the right to alter or upgrade details at any time without prior notice.</p> |   | <p>Scale Date<br/>1:2 NOV23</p>           |

EXTERIOR

INTERIOR

- Building underlay
- Archimax® AM 500 horizontal weatherboard fixed with clip brackets @ 600mm max centers with 2-8g x 2" csk sq s.s. self tapping screws through the cladding battens (1)
- Vertical battens
- Black polyethylene underlay strip isolator (between aluminium & treated timber battens)
- Flexible flashing tape
- Cavity vent strip
- Archimax AM 009 board starter (2)
- Inter-Storey flashing stop ends
- Archimax® AM 018 end capping cover part B (3)
- Archimax® AM 016 capping cover clip (4)
- Archimax® AM 017 end capping cover part A (5)
- Horizontal battens

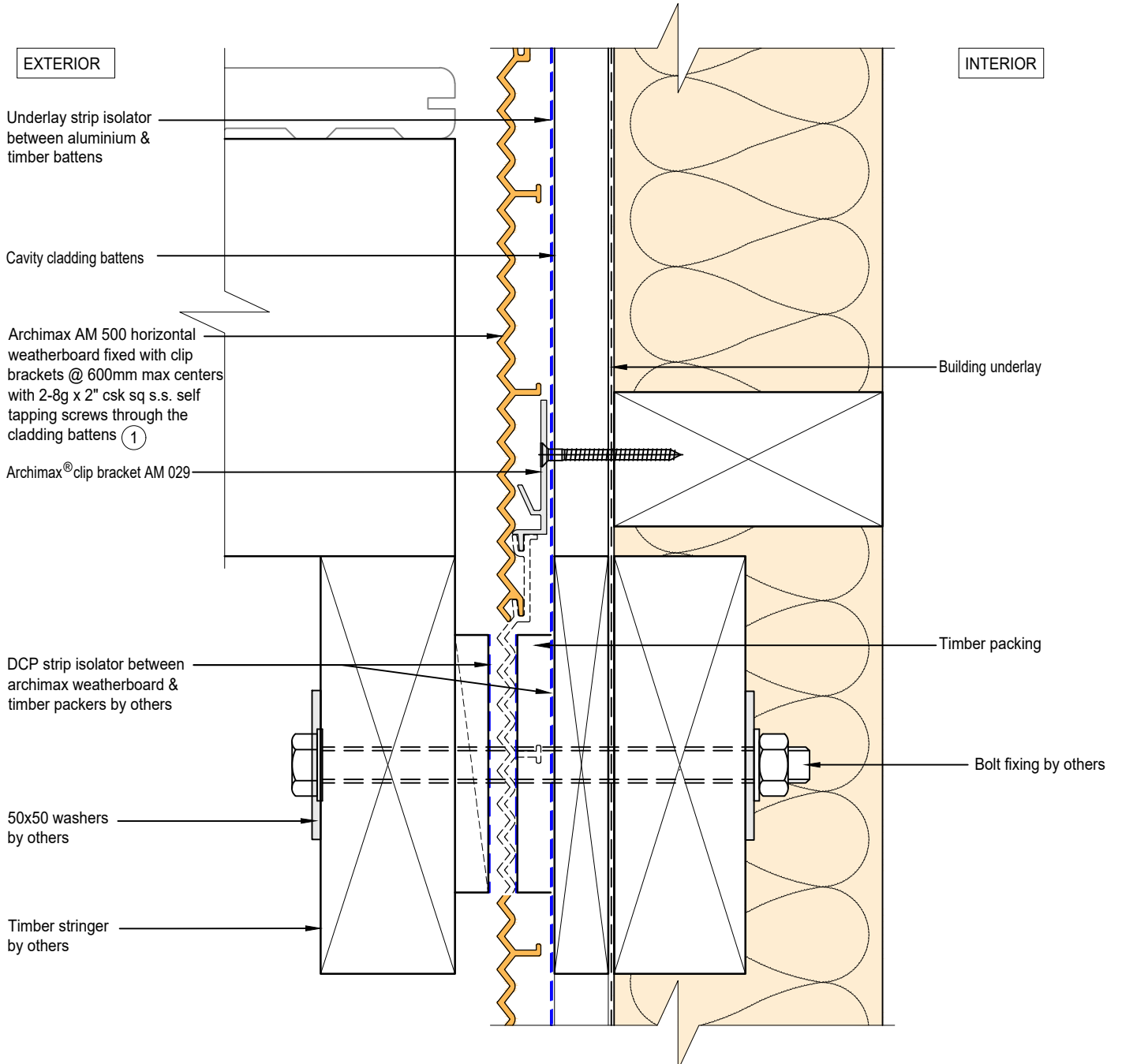


NOTE:  
STOP ENDS TO BE INSTALLED AT INTER-STOREY FLASHING ENDS



**ARCHIMAX**  
ALUMINIUM CLADDING SYSTEM  
*Creating more durable building envelopes*  
www.archimax.co.nz

|  |   |                                |
|--|---|--------------------------------|
| System<br>AM 500 - HORIZONTAL WEATHERBOARD   | Detail<br>ARCHIMAX® HORIZONTAL JOINT DETAIL | Drawing No. Rev.<br>AM-HJ-H7 D |
| This drawing is the copyright of Archimax Limited. Modification of details for job specification requirements must be approved by Archimax Ltd. The building designer is ultimately responsible to ensure all building work is designed and constructed according to building code requirements, best code of practice industry guidelines. All components must be supplied by Archimax. Archimax reserves the right to alter or upgrade details at any time without prior notice. |   | Scale Date<br>1:2 NOV23        |




**ARCHIMAX**  
**ALUMINIUM CLADDING SYSTEM**  
*Creating more durable building envelopes*  
[www.archimax.co.nz](http://www.archimax.co.nz)

System  
**AM 500 - HORIZONTAL WEATHERBOARD**

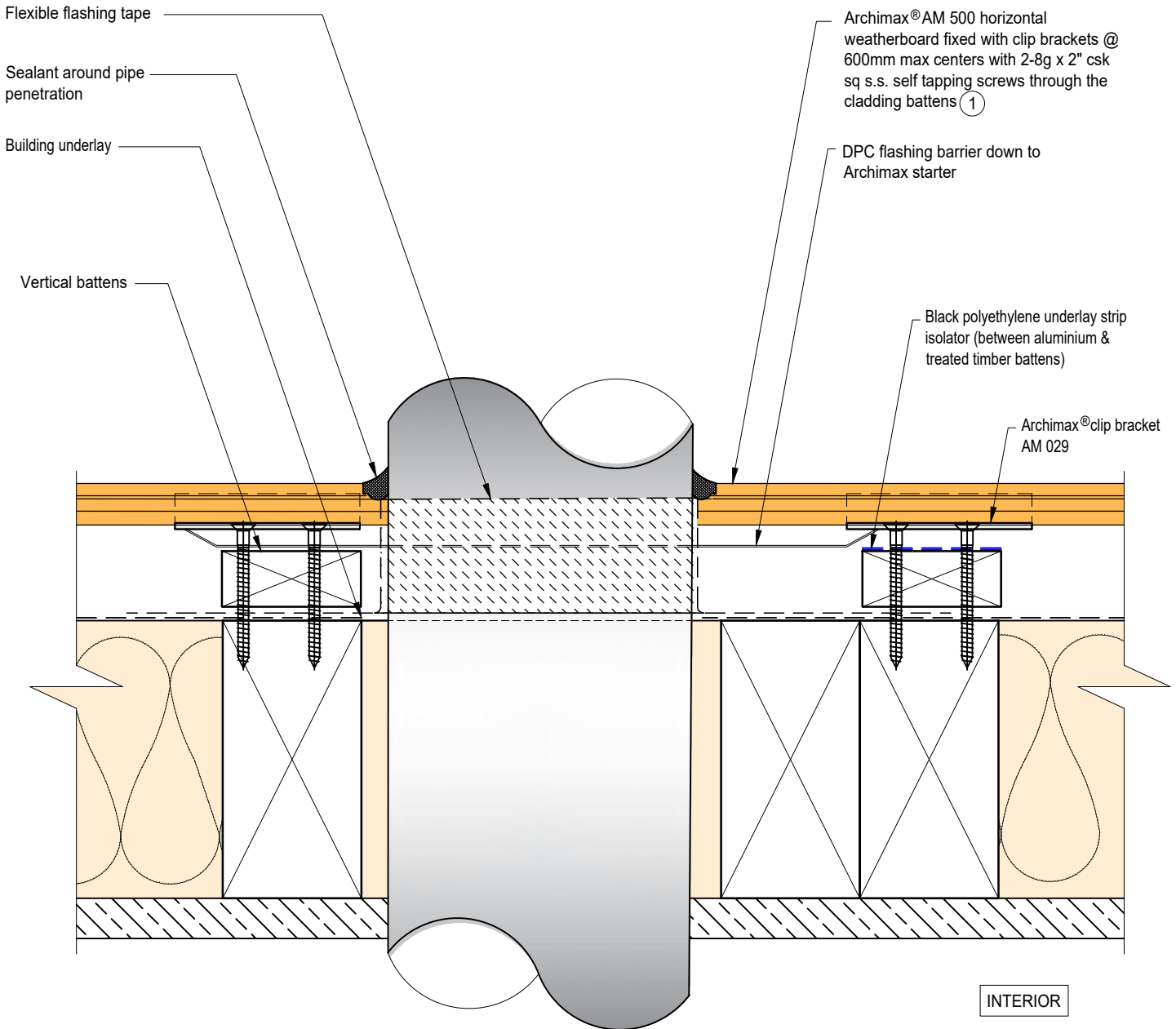
Detail  
**ARCHIMAX® DECK JUNCTION DETAIL**

Drawing No. Rev.  
**AM-DJ-H8 D**

This drawing is the copyright of Archimax Limited. Modification of details for job specification requirements must be approved by Archimax Ltd. The building designer is ultimately responsible to ensure all building work is designed and constructed according to building code requirements, best code of practice industry guidelines. All components must be supplied by Archimax. Archimax reserves the right to alter or upgrade details at any time without prior notice.

Scale Date  
**1:2 NOV23**

EXTERIOR



INTERIOR



**BRANZ Appraised**  
Appraisal No. 1173 [2021]

EXTERIOR

INTERIOR

Archimax® AM 500 horizontal weatherboard fixed with clip brackets @ 600mm max centers with 2-8g x 2" csk sq s.s. self tapping screws through the cladding battens ①

Archimax® clip bracket AM 029

Vertical battens

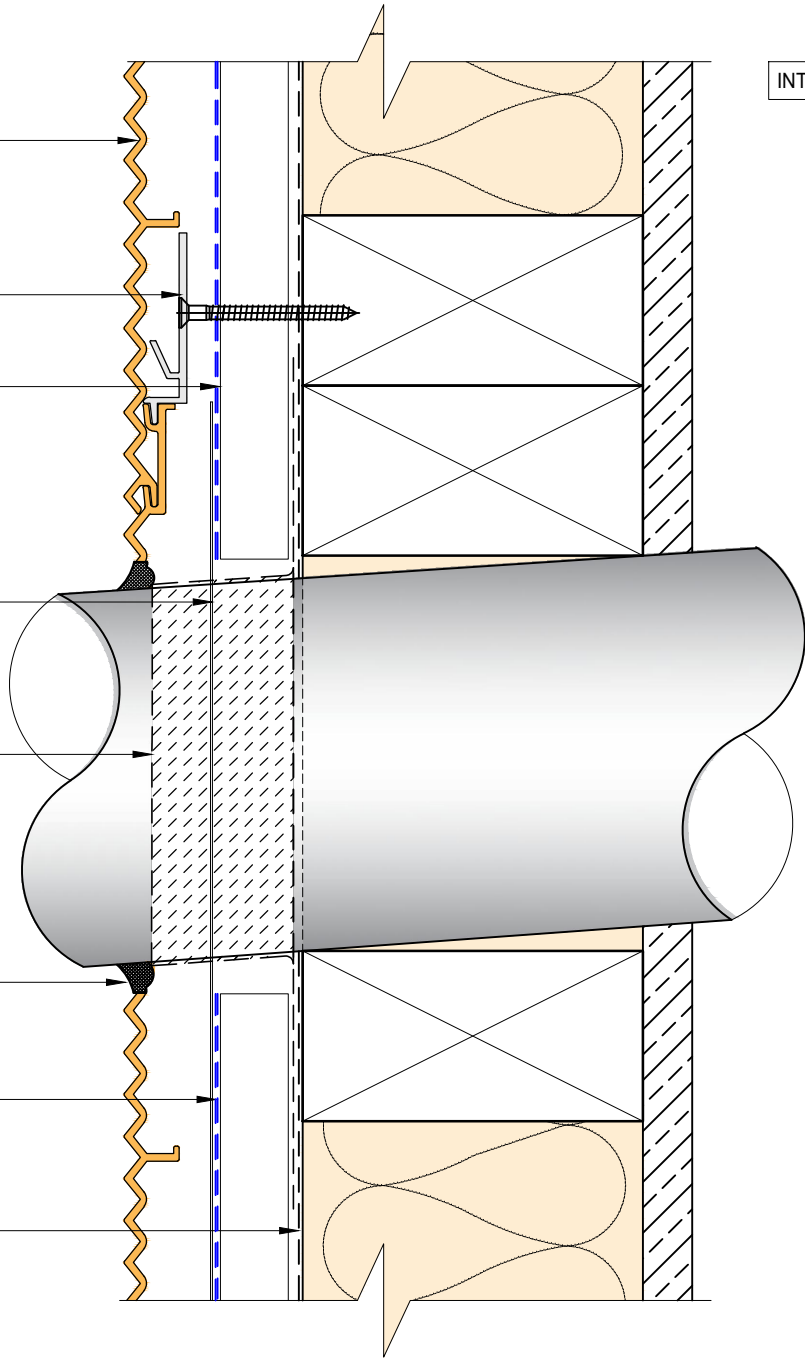
DPC flashing barrier down to Archimax starter

Flexible flashing tape

Sealant around pipe penetration

Black polyethylene underlay strip isolator (between aluminium & treated timber battens)

Building underlay



BRANZ Appraised  
Appraisal No. 1173 [2021]

EXTERIOR

INTERIOR

Compressible foam tape

Archimax® AM 018 end capping cover part B (3)

Archimax® AM 016 capping cover clip (4)

Archimax® AM 017 end capping cover part A (5)

Solid packer

Horizontal battens

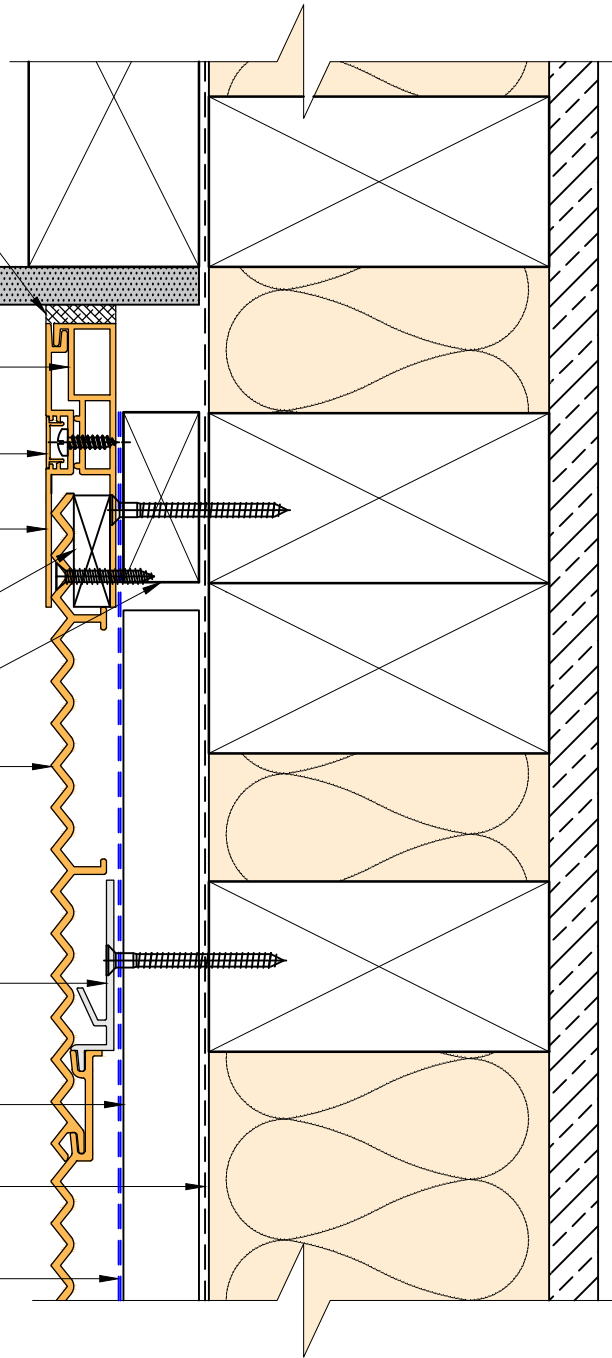
Archimax® AM 500 horizontal weatherboard fixed with clip brackets @ 600mm max centers with 2-8g x 2" csk sq s.s. self tapping screws through the cladding battens (1)

Archimax® clip bracket AM 029

Vertical battens

Building underlay

Black polyethylene underlay strip isolator (between aluminium & treated timber battens)



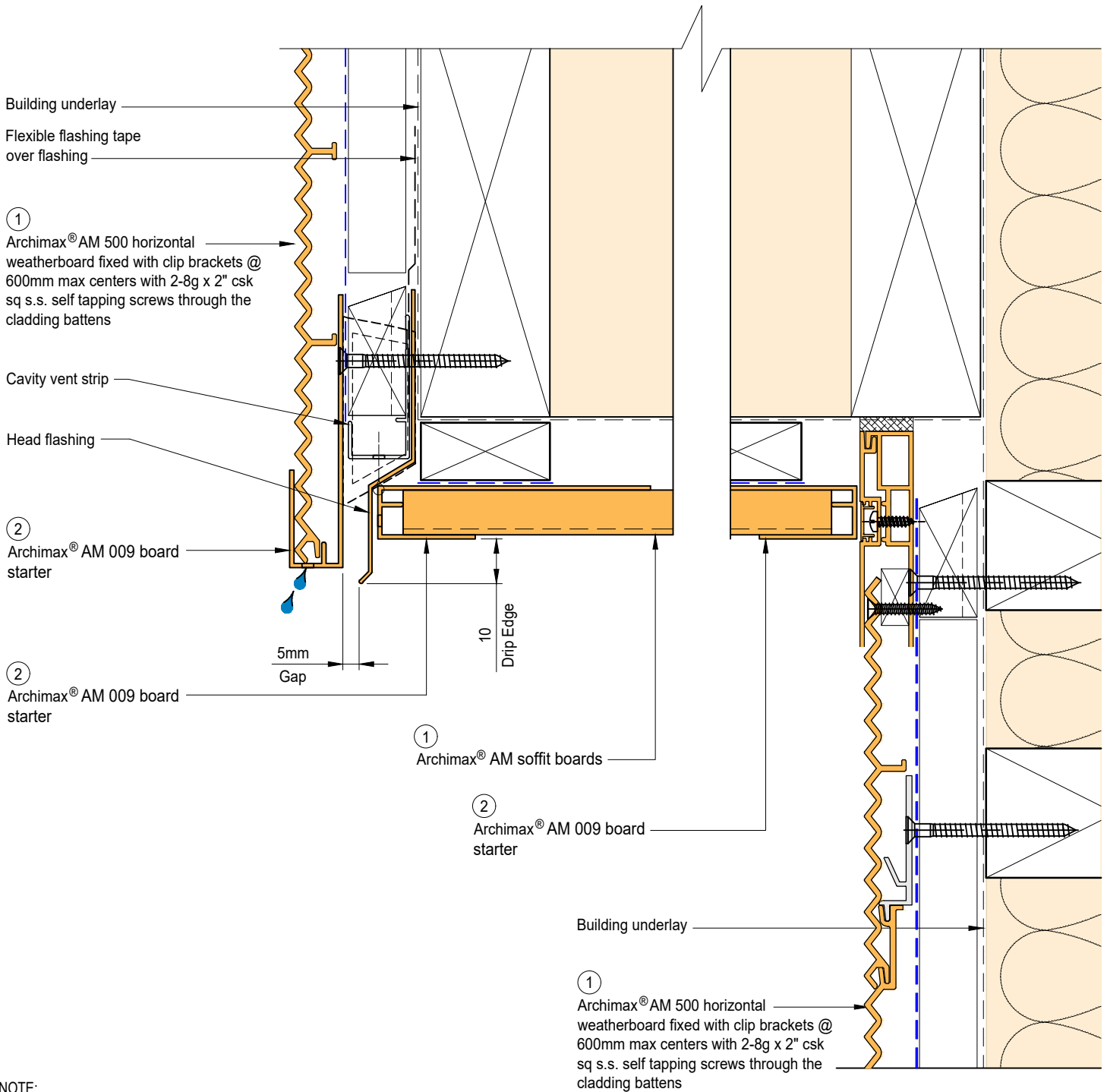
System  
AM 500 - HORIZONTAL WEATHERBOARD

Detail  
ARCHIMAX® SOFFIT DETAIL

Drawing No. Rev.  
AM-SO-H10 D


This drawing is the copyright of Archimax Limited. Modification of details for job specification requirements must be approved by Archimax Ltd. The building designer is ultimately responsible to ensure all building work is designed and constructed according to building code requirements, best code of practice industry guidelines. All components must be supplied by Archimax. Archimax reserves the right to alter or upgrade details at any time without prior notice.

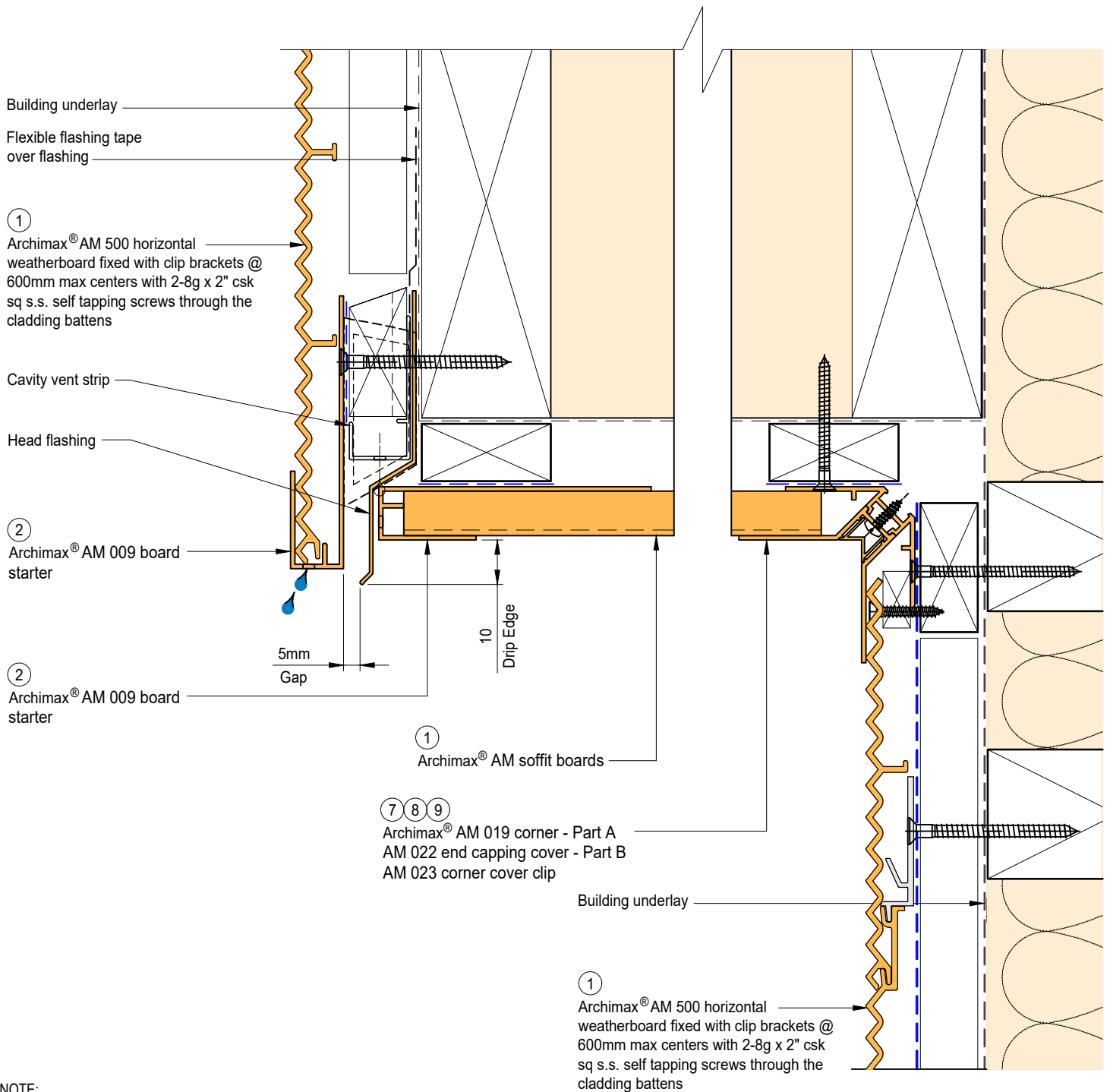
Scale Date  
1:2 NOV23



NOTE:  
STOP ENDS TO BE INSTALLED AT FLASHING ENDS




|  |   |  |   |                       |
|--|---|--|---|-----------------------|
|  <p><b>ARCHIMAX</b><br/>ALUMINIUM CLADDING SYSTEM<br/><i>Creating more durable building envelopes</i><br/>www.archimax.co.nz</p> | <p>System<br/>AM 500 - HORIZONTAL WEATHERBOARD</p>  | <p>Detail<br/>ARCHIMAX® FASCIA, SOFFIT &amp; WALL DETAIL</p> | <p>Drawing No. Rev.<br/>AM-SO-H11.1 D</p> |                       |
|  | <p>This drawing is the copyright of Archimax Limited. Modification of details for job specification requirements must be approved by Archimax Ltd. The building designer is ultimately responsible to ensure all building work is designed and constructed according to building code requirements, best code of practice industry guidelines. All components must be supplied by Archimax. Archimax reserves the right to alter or upgrade details at any time without prior notice.</p> |  | <p>Scale<br/>1:2</p>                      | <p>Date<br/>NOV23</p> |

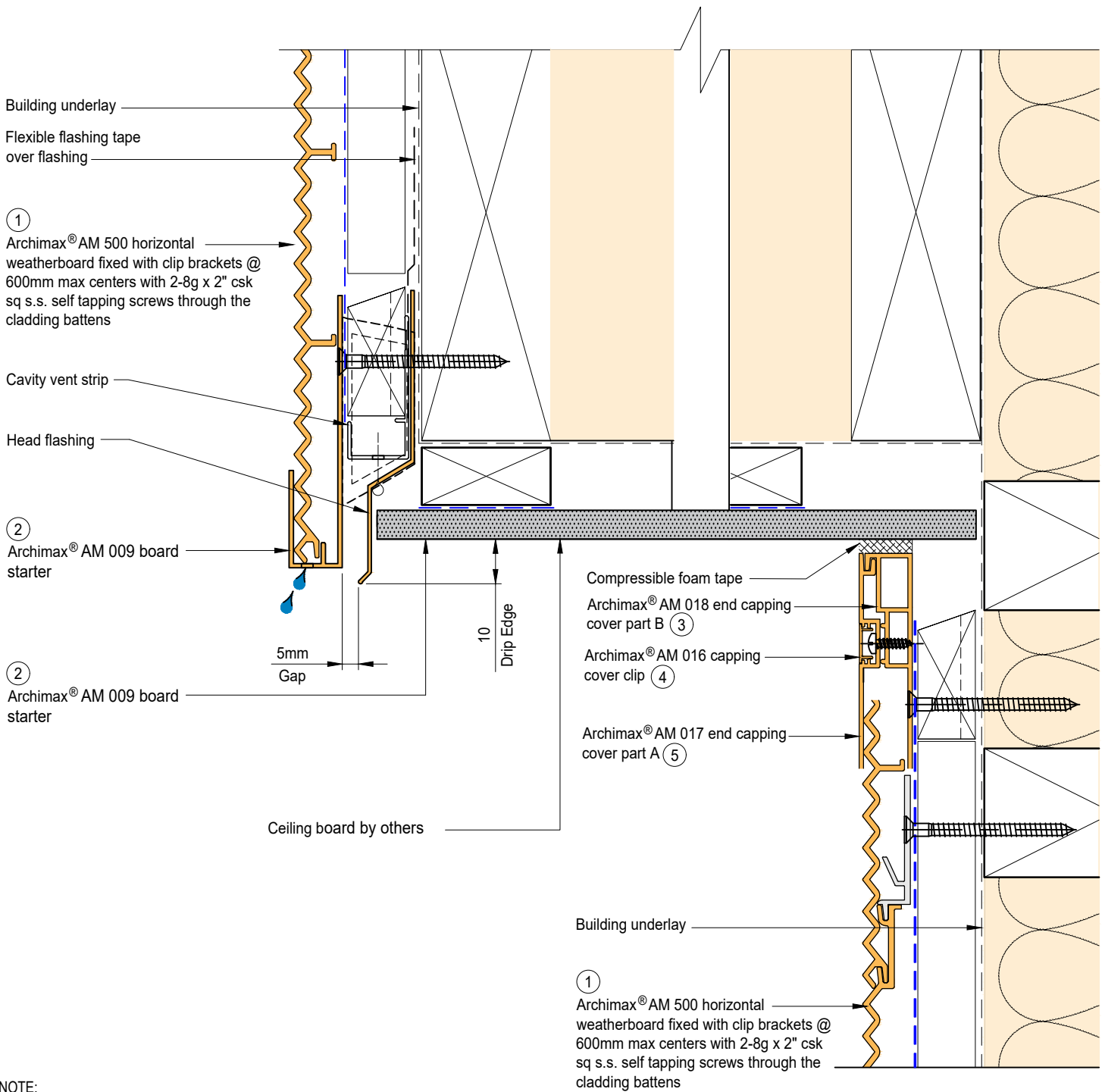


NOTE:  
STOP ENDS TO BE INSTALLED AT FLASHING ENDS




|  |   |  |  |                     |
|--|---|--|--|---------------------|
|  <p><b>ARCHIMAX</b><br/>ALUMINIUM CLADDING SYSTEM<br/><i>Creating more durable building envelopes</i><br/>www.archimax.co.nz</p> | System<br><b>AM 500 - HORIZONTAL WEATHERBOARD</b>   | Detail<br><b>ARCHIMAX® FASCIA, SOFFIT &amp; WALL DETAIL (90° SOFFIT / WALL) DETAIL</b> | Drawing No. Rev.<br><b>AM-SO-H11.2 D</b> |                     |
|  | <small>This drawing is the copyright of Archimax Limited. Modification of details for job specification requirements must be approved by Archimax Ltd. The building designer is ultimately responsible to ensure all building work is designed and constructed according to building code requirements, best code of practice industry guidelines. All components must be supplied by Archimax. Archimax reserves the right to alter or upgrade details at any time without prior notice.</small> |  |  | Scale<br><b>1:2</b> |





NOTE:  
STOP ENDS TO BE INSTALLED AT FLASHING ENDS



|  |   |  |   |
|--|---|--|---|
|  <p><b>ARCHIMAX</b><br/>ALUMINIUM CLADDING SYSTEM<br/><i>Creating more durable building envelopes</i><br/>www.archimax.co.nz</p> | <p>System<br/>AM 500 - HORIZONTAL WEATHERBOARD</p>  | <p>Detail<br/>ARCHIMAX® FASCIA, SOFFIT &amp; WALL DETAIL</p> | <p>Drawing No. Rev.<br/>AM-SO-H11.3 D</p> |
|  | <p>This drawing is the copyright of Archimax Limited. Modification of details for job specification requirements must be approved by Archimax Ltd. The building designer is ultimately responsible to ensure all building work is designed and constructed according to building code requirements, best code of practice industry guidelines. All components must be supplied by Archimax. Archimax reserves the right to alter or upgrade details at any time without prior notice.</p> |  | <p>Scale Date<br/>1:2 NOV23</p>           |

EXTERIOR

Selected roofing

Flashing & sealed by others

Archimax® AM 018 end capping cover part B ③

Archimax® AM 016 capping cover clip ④

Archimax® AM 017 end capping cover part A ⑤

Black polyethylene underlay strip isolator (between aluminium & treated timber battens)

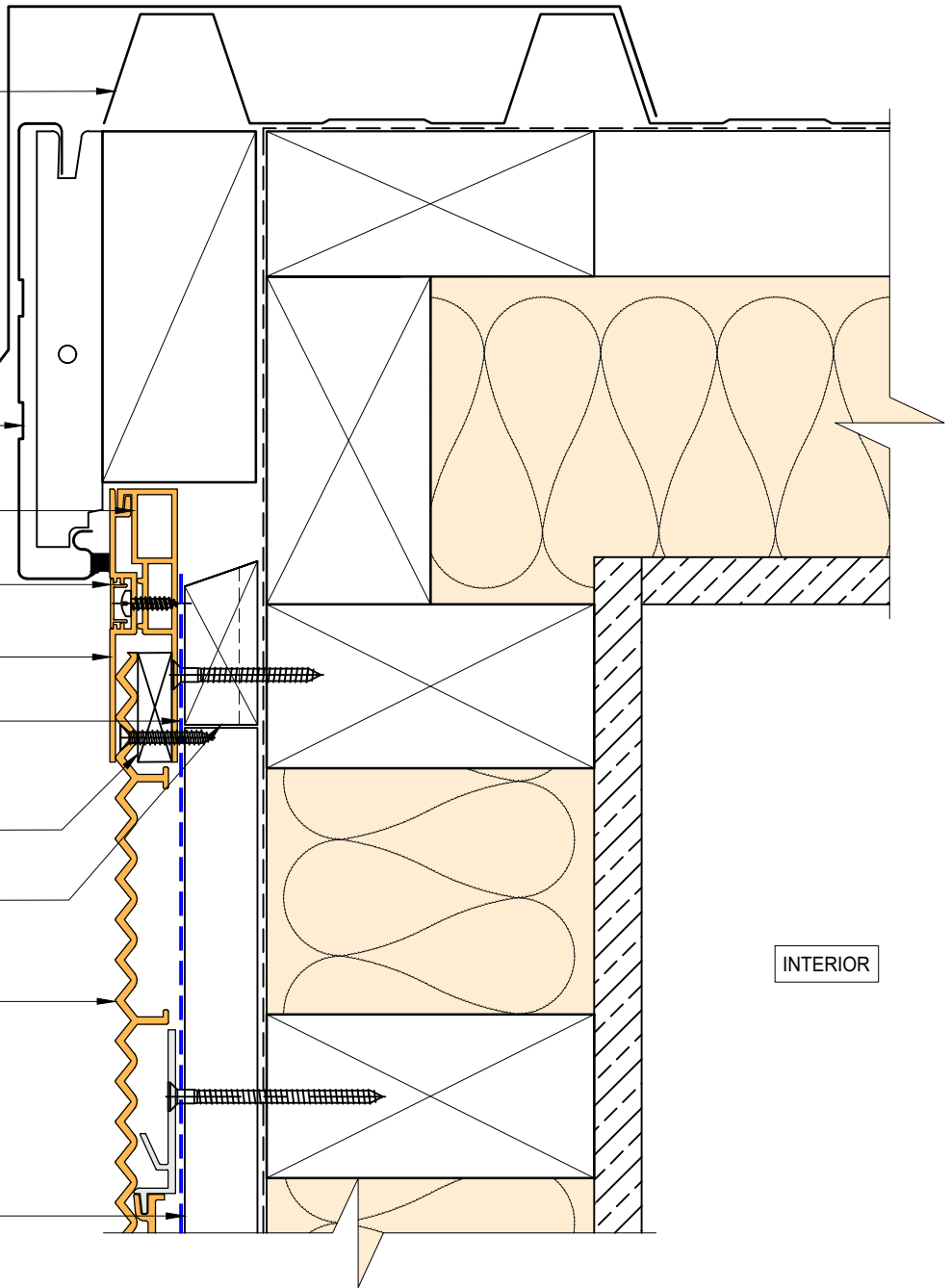
Solid packer

Horizontal battens

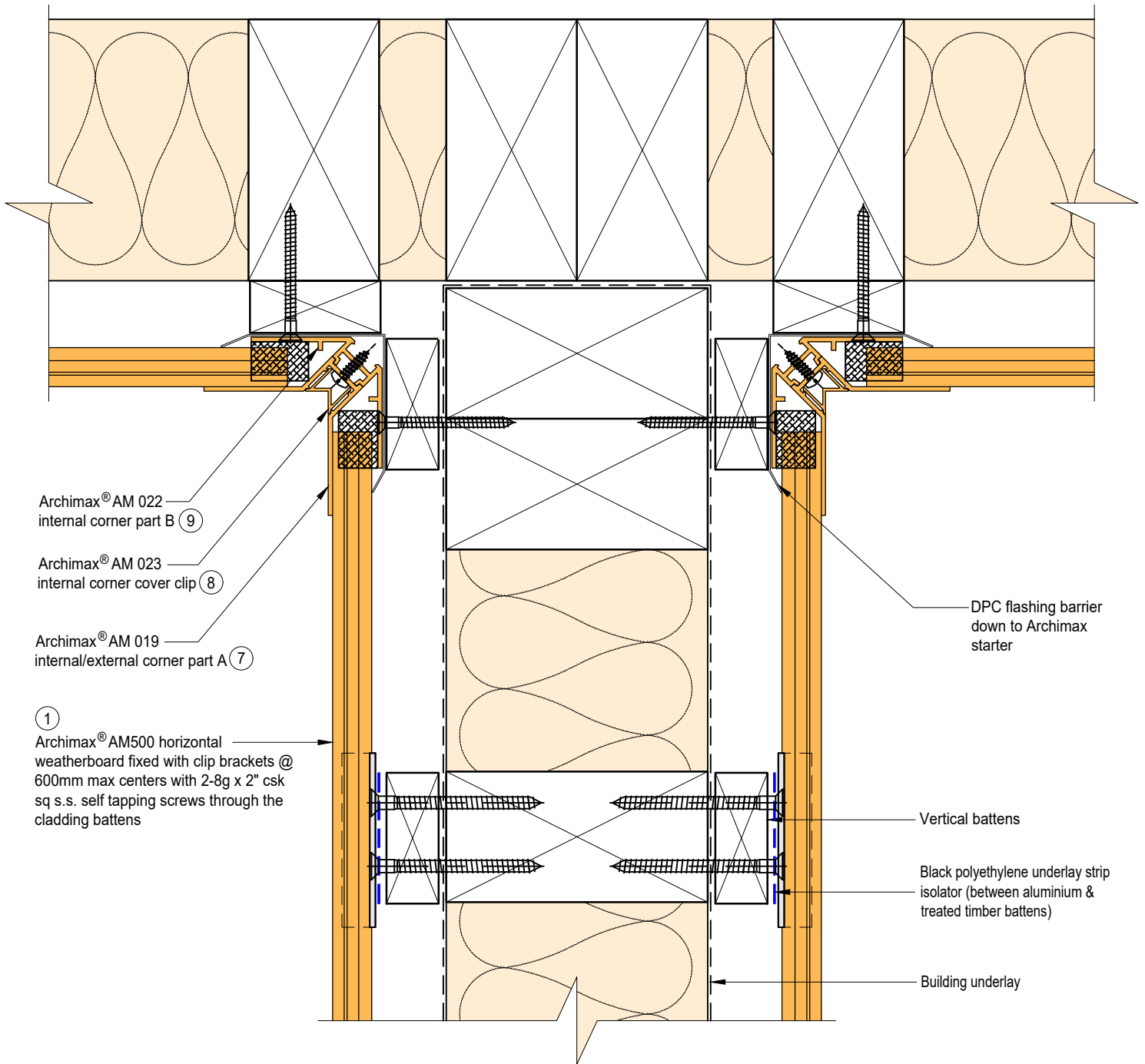
Archimax® AM 500 horizontal weatherboard fixed with clip brackets @ 600mm max centers with 2-8g x 2" csk sq s.s. self tapping screws through the cladding battens ①


Vertical battens

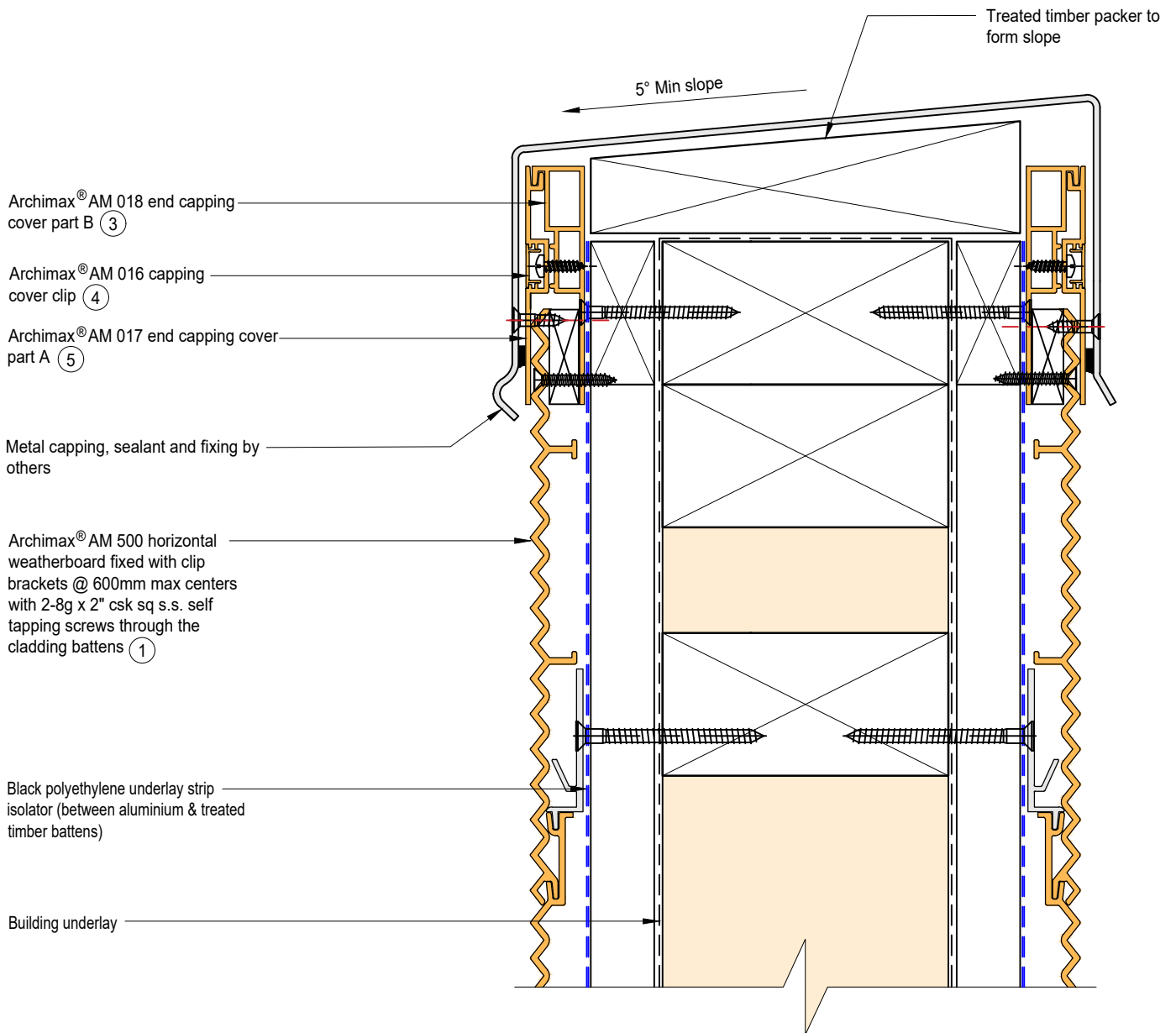
INTERIOR



BRANZ Appraised  
Appraisal No. 1173 [2021]

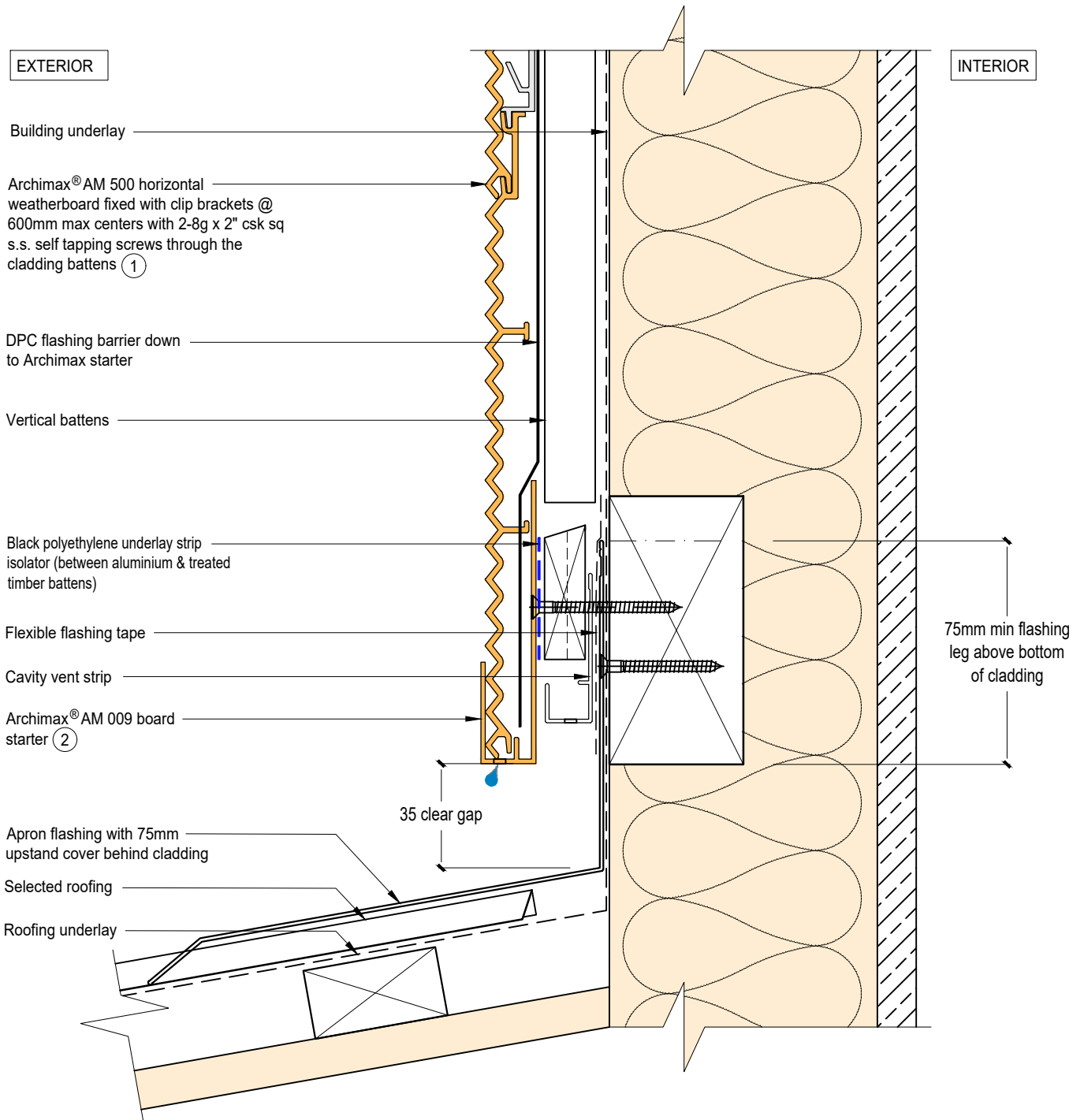



|  |   |  |   |
|--|---|--|---|
|  <p><b>ARCHIMAX</b><br/>ALUMINIUM CLADDING SYSTEM<br/><i>Creating more durable building envelopes</i><br/>www.archimax.co.nz</p> | <p>System<br/>AM 500 - HORIZONTAL WEATHERBOARD</p>  | <p>Detail<br/>ARCHIMAX® BALUSTRADE JUNCTION DETAIL</p> | <p>Drawing No. Rev.<br/>AM-BJ-H13 D</p> |
|  | <p>This drawing is the copyright of Archimax Limited. Modification of details for job specification requirements must be approved by Archimax Ltd. The building designer is ultimately responsible to ensure all building work is designed and constructed according to building code requirements, best code of practice industry guidelines. All components must be supplied by Archimax. Archimax reserves the right to alter or upgrade details at any time without prior notice.</p> |  | <p>Scale Date<br/>1:2 NOV23</p>         |

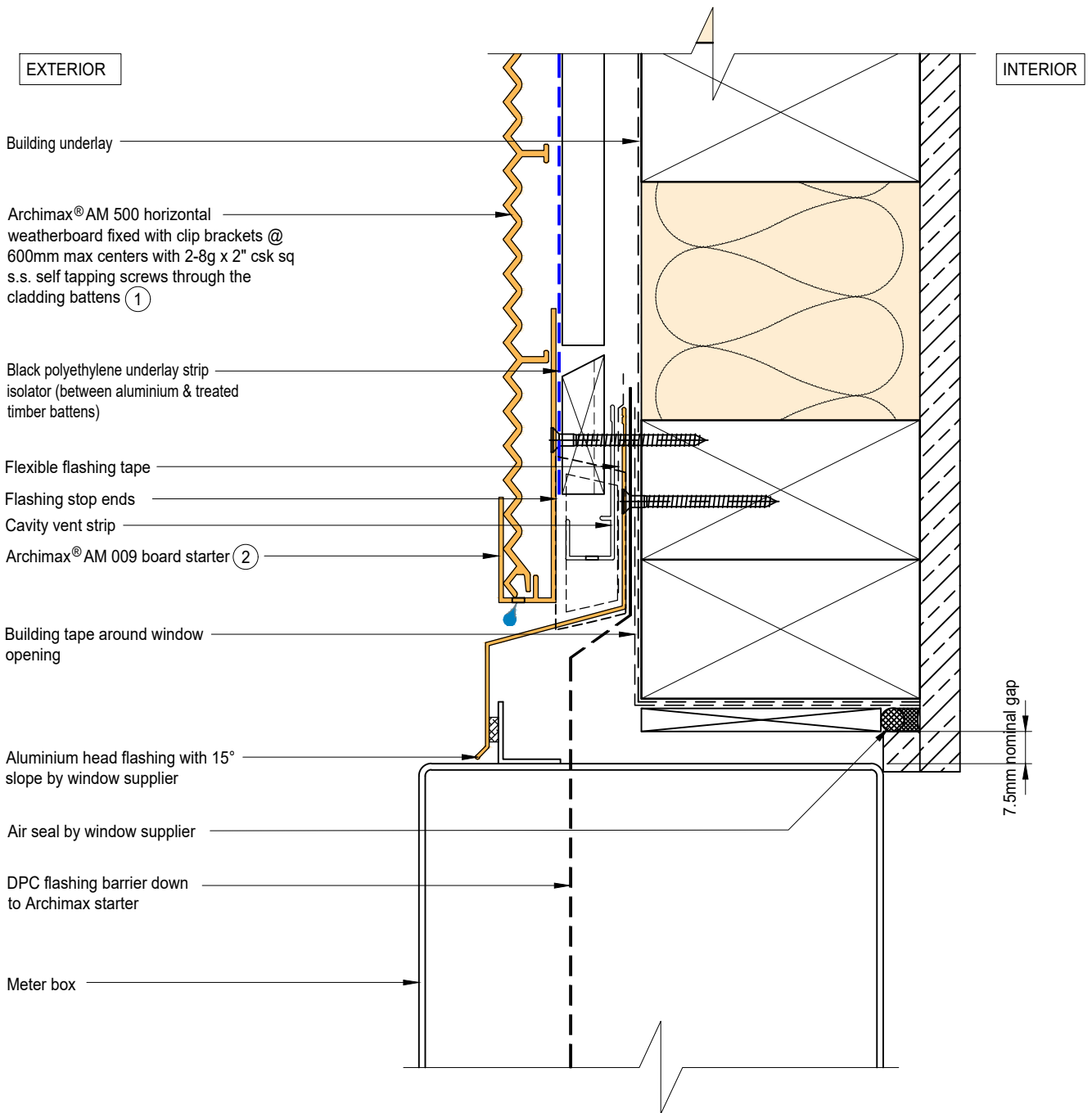


**ARCHIMAX**  
ALUMINIUM CLADDING SYSTEM  
*Creating more durable building envelopes*  
www.archimax.co.nz

|  |  |                                  |
|--|--|----------------------------------|
| System<br>AM 500 - HORIZONTAL WEATHERBOARD   | Detail<br>ARCHIMAX® PARAPET WITH CAVITY DETAIL | Drawing No. Rev.<br>AM-PAR-H14 D |
| This drawing is the copyright of Archimax Limited. Modification of details for job specification requirements must be approved by Archimax Ltd. The building designer is ultimately responsible to ensure all building work is designed and constructed according to building code requirements, best code of practice industry guidelines. All components must be supplied by Archimax. Archimax reserves the right to alter or upgrade details at any time without prior notice. |  | Scale Date<br>1:2 NOV23          |




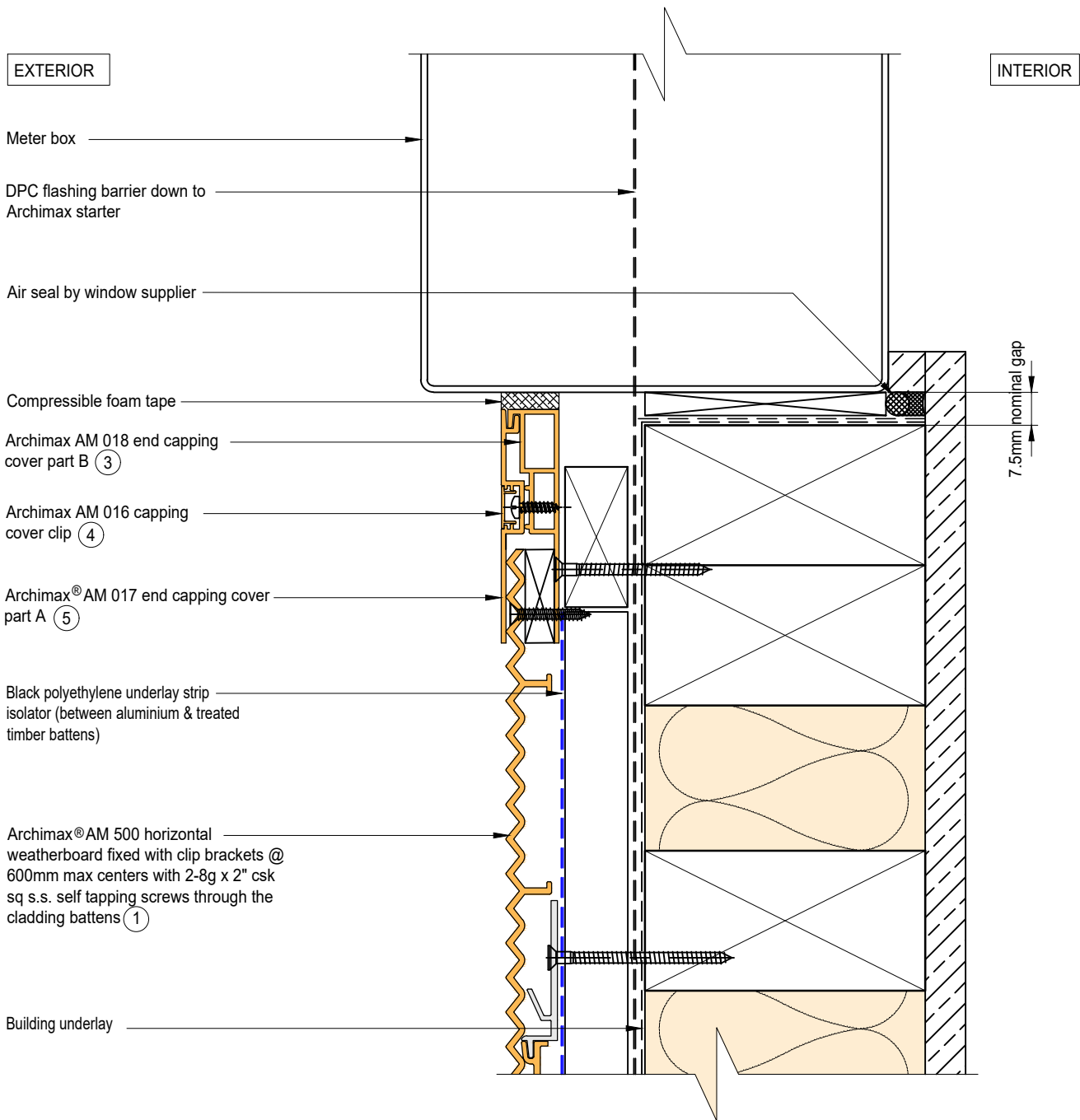
|  |   |   |   |
|--|---|---|---|
|  <p>ARCHIMAX<br/>ALUMINIUM CLADDING SYSTEM<br/>Creating more durable building envelopes<br/>www.archimax.co.nz</p> | <p>System<br/>AM 500 - HORIZONTAL WEATHERBOARD</p>  | <p>Detail<br/>ARCHIMAX® LOWER ROOF WALL JUNCTION DETAIL</p> | <p>Drawing No. Rev.<br/>AM-RW-H15 D</p> |
|  | <p>This drawing is the copyright of Archimax Limited. Modification of details for job specification requirements must be approved by Archimax Ltd. The building designer is ultimately responsible to ensure all building work is designed and constructed according to building code requirements, best code of practice industry guidelines. All components must be supplied by Archimax. Archimax reserves the right to alter or upgrade details at any time without prior notice.</p> |   | <p>Scale Date<br/>1:2 NOV23</p>         |



NOTE:  
STOP ENDS TO BE INSTALLED AT FLASHING ENDS

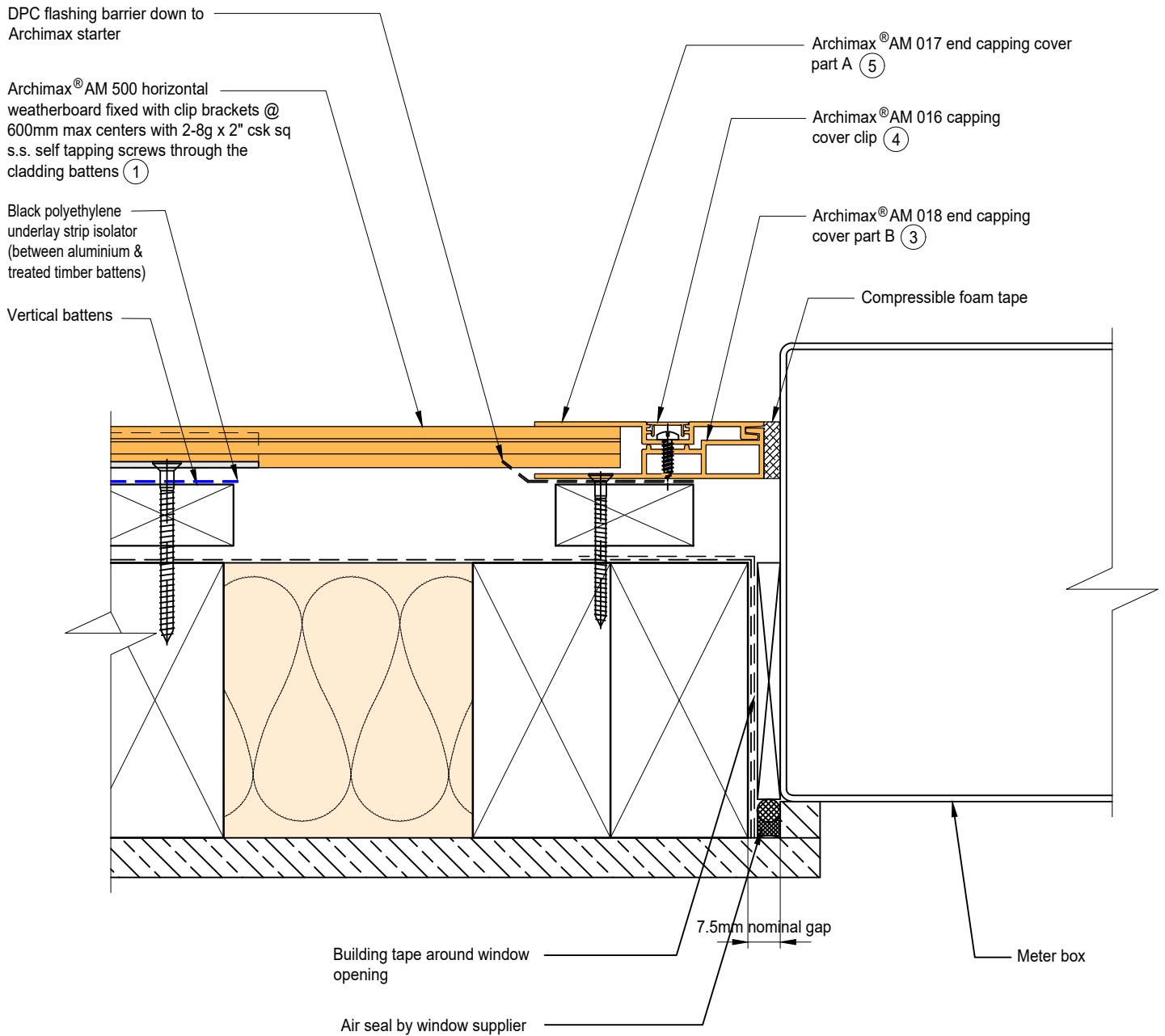



|  |   |  |  |
|--|---|--|--|
|  <p><b>ARCHIMAX</b><br/>ALUMINIUM CLADDING SYSTEM<br/><i>Creating more durable building envelopes</i><br/>www.archimax.co.nz</p> | System<br><b>AM 500 - HORIZONTAL WEATHERBOARD</b>   | Detail<br><b>ARCHIMAX® METER BOX HEAD DETAIL</b> | Drawing No. Rev.<br><b>AM-MB-H16 D</b> |
|  | <small>This drawing is the copyright of Archimax Limited. Modification of details for job specification requirements must be approved by Archimax Ltd. The building designer is ultimately responsible to ensure all building work is designed and constructed according to building code requirements, best code of practice industry guidelines. All components must be supplied by Archimax. Archimax reserves the right to alter or upgrade details at any time without prior notice.</small> |  | Scale Date<br><b>1:2 NOV23</b>         |




**ARCHIMAX**  
 ALUMINIUM CLADDING SYSTEM  
*Creating more durable building envelopes*  
 www.archimax.co.nz

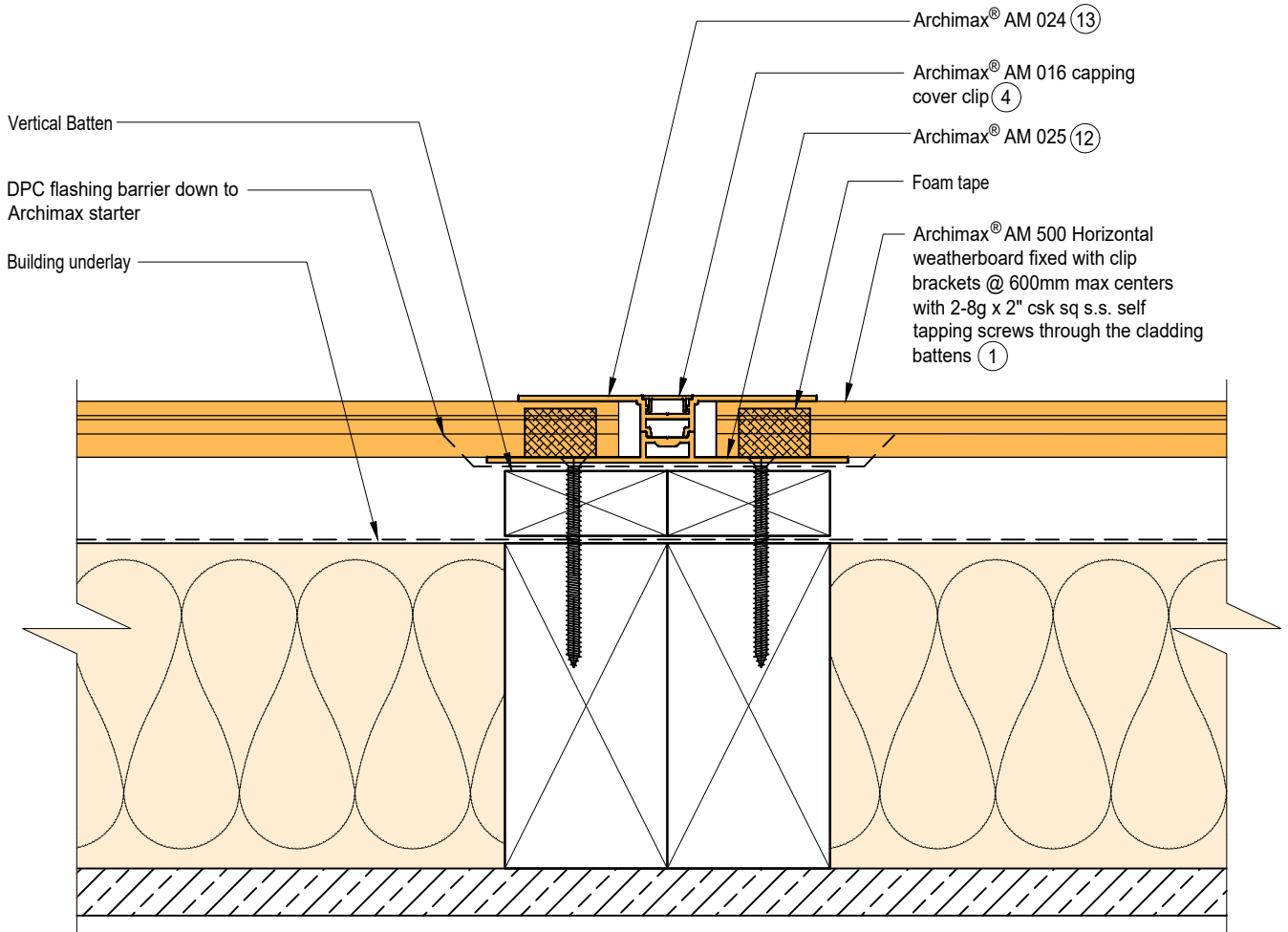
|   |   |                                 |
|---|---|---------------------------------|
| System<br>AM 500 - HORIZONTAL WEATHERBOARD  | Detail<br>ARCHIMAX® METER BOX SILL DETAIL | Drawing No. Rev.<br>AM-MB-H17 D |
| <small>This drawing is the copyright of Archimax Limited. Modification of details for job specification requirements must be approved by Archimax Ltd. The building designer is ultimately responsible to ensure all building work is designed and constructed according to building code requirements, best code of practice industry guidelines. All components must be supplied by Archimax. Archimax reserves the right to alter or upgrade details at any time without prior notice.</small> |   | Scale<br>1:2<br>Date<br>NOV23   |



|  |   |   |   |
|--|---|---|---|
|  <p><b>ARCHIMAX</b><br/>ALUMINIUM CLADDING SYSTEM<br/><i>Creating more durable building envelopes</i><br/>www.archimax.co.nz</p> | <p>System<br/>AM 500 - HORIZONTAL WEATHERBOARD</p>  | <p>Detail<br/>ARCHIMAX® METER BOX JAMB DETAIL</p> | <p>Drawing No. Rev.<br/>AM-MB-H18 D</p> |
|  | <p>This drawing is the copyright of Archimax Limited. Modification of details for job specification requirements must be approved by Archimax Ltd. The building designer is ultimately responsible to ensure all building work is designed and constructed according to building code requirements, best code of practice industry guidelines. All components must be supplied by Archimax. Archimax reserves the right to alter or upgrade details at any time without prior notice.</p> |   | <p>Scale Date<br/>1:2 NOV23</p>         |

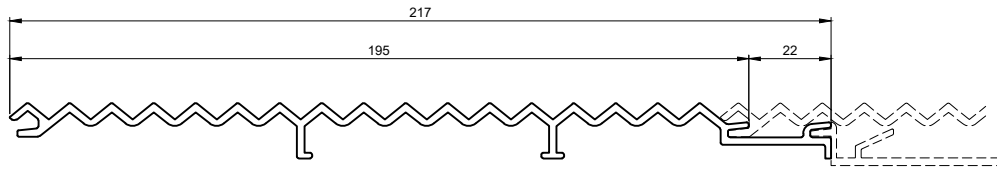


EXTERIOR



INTERIOR





①

AM 500 Archimax Horizontal / Vertical Weatherboard

|   |  |  |   |                                |
|---|--|--|---|--------------------------------|
| <p>②</p>  | <p>③</p>                                     | <p>④</p>   | <p>⑤</p>                                    | <p>⑥</p>                       |
| <p>AM 009<br/>Board Starter</p>                   | <p>AM 018<br/>End Capping Part B</p>         | <p>AM 016<br/>Jointer / Jamb / Sill Capping<br/>Cover Clip</p> | <p>AM 017<br/>End Capping Part A</p>        | <p>AM 029<br/>Clip Bracket</p> |
| <p>⑨</p>  | <p>⑧</p>                                     | <p>⑨</p>   | <p>⑪</p>                                    |                                |
| <p>AM 019<br/>Internal/External Corner Part A</p> | <p>AM 023<br/>Internal Corner Cover Clip</p> | <p>AM 022<br/>Internal Corner Part B</p>                       | <p>AM 020<br/>External Cover Cover Clip</p> |                                |