

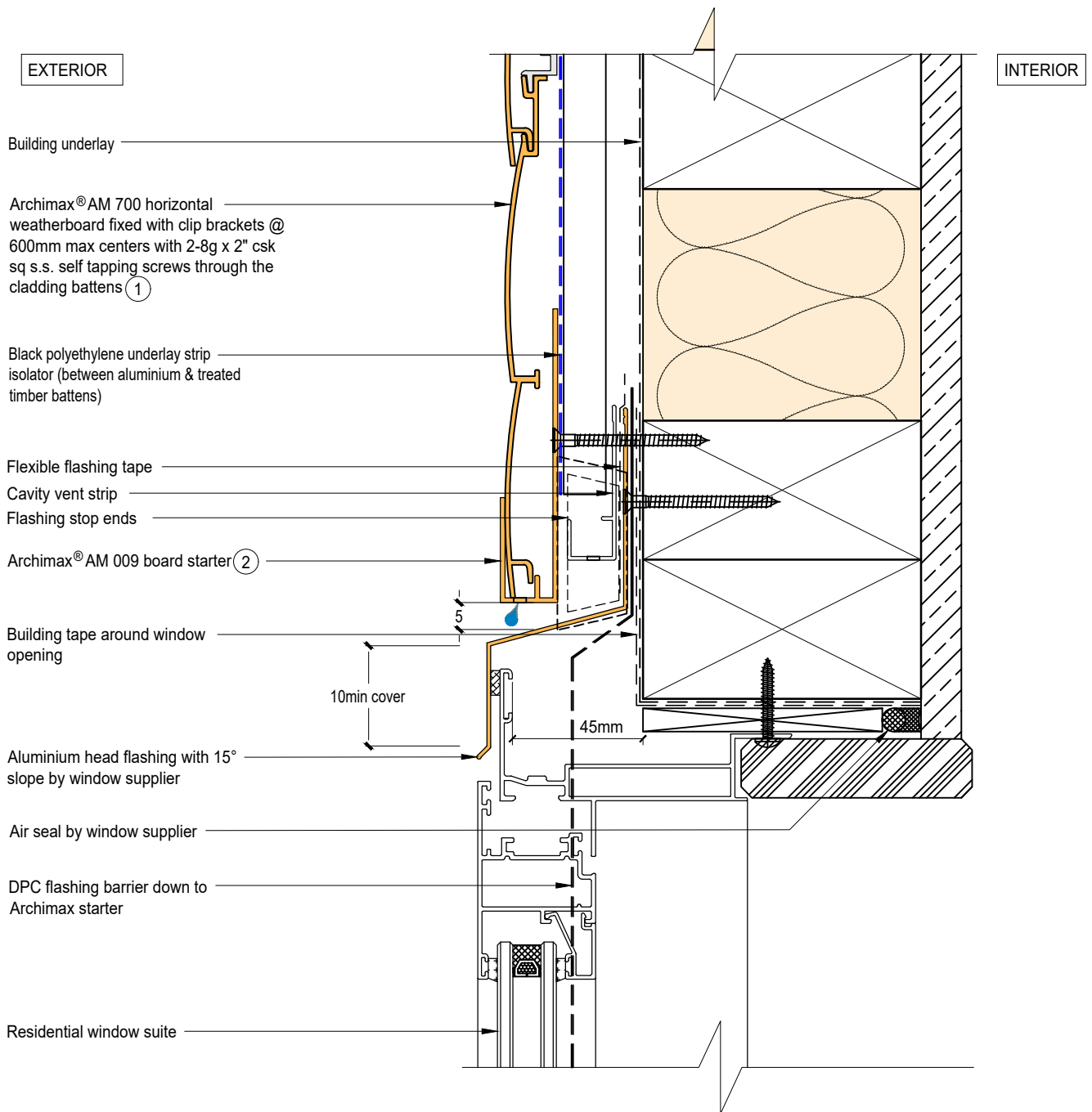


Archimax® Aluminium Cladding System
AM700 Horizontal Profile - Installation Details

Drawing No.	Rev	Description
AM-WH-H1	D	Archimax® Window Head Detail
AM-WS-H2.1	D	Archimax® Window Sill Detail
AM-WS-H2.2	D	Archimax® Window Sill Detail
AM-WJ-H3	D	Archimax® Window Jamb Detail
AM-EXT-H4	D	Archimax® External Corner Detail
AM-INT-H5	D	Archimax® Internal Corner Detail
AM-CBS-H6.1	D	Archimax® Concrete Floor Board Starter Detail – Timber
AM-CBS-H6.2	D	Archimax® Concrete Floor Board Starter Detail –Fire Wall
AM-HJ-H7	D	Archimax® Horizontal Joint Detail
AM-DJ-H8	D	Archimax® Deck Junction Detail
AM-PP-H9A	D	Archimax® Pipe Penetration Plan View Detail
AM-PP-H9B	D	Archimax® Pipe Penetration Section View Detail
AM-SO-H10	D	Archimax® Soffit Detail
AM-SO-H11.1	D	Archimax® Fascia, Soffit & Wall Detail
AM-SO-H11.2	D	Archimax® Fascia, Soffit & Wall Detail (90° Soffit/Wall)
AM-SO-H11.3	D	Archimax® Fascia, Soffit & Wall Detail
AM-SO-H12	D	Archimax® Non-Soffit Detail
AM-BJ-H13	D	Archimax® Internal Corner Junction Detail
AM-PAR-H14	D	Archimax® Parapet with Cavity Detail
AM-RW-H15	D	Archimax® Lower Roof Wall Junction Detail
AM-MB-H16	D	Archimax® Meter Box Head Detail
AM-MB-H17	D	Archimax® Meter Box Sill Detail
AM-MB-H18	D	Archimax® Meter Box Jamb Detail
AM-MB-H19	D	Archimax® Vertical Joint Detail




AM700
Coverage: 150mm



NOTE:

1. Stop ends to be installed at flashing ends
2. Minimum clearance between AIR BARRIER and WINDOW JOINERY to be 45mm. Window joinery should not be permanently fixed until cladding been installed.



 <p>ARCHIMAX ALUMINIUM CLADDING SYSTEM <i>Creating more durable building envelopes</i> www.archimax.co.nz</p>	<p>System AM 700 - HORIZONTAL WEATHERBOARD</p>	<p>Detail ARCHIMAX® WINDOW HEAD DETAIL</p>	<p>Drawing No. Rev. AM-WH-H1 D</p>
	<p>This drawing is the copyright of Archimax Limited. Modification of details for job specification requirements must be approved by Archimax Ltd. The building designer is ultimately responsible to ensure all building work is designed and constructed according to building code requirements, best code of practice industry guidelines. All components must be supplied by Archimax. Archimax reserves the right to alter or upgrade details at any time without prior notice.</p>		<p>Scale Date 1:2 NOV23</p>

EXTERIOR

INTERIOR

Residential window suite

Air seal by window supplier

Building tape around window opening

45mm

8mm min cover

Archimax® AM 018 end capping cover part B (3)

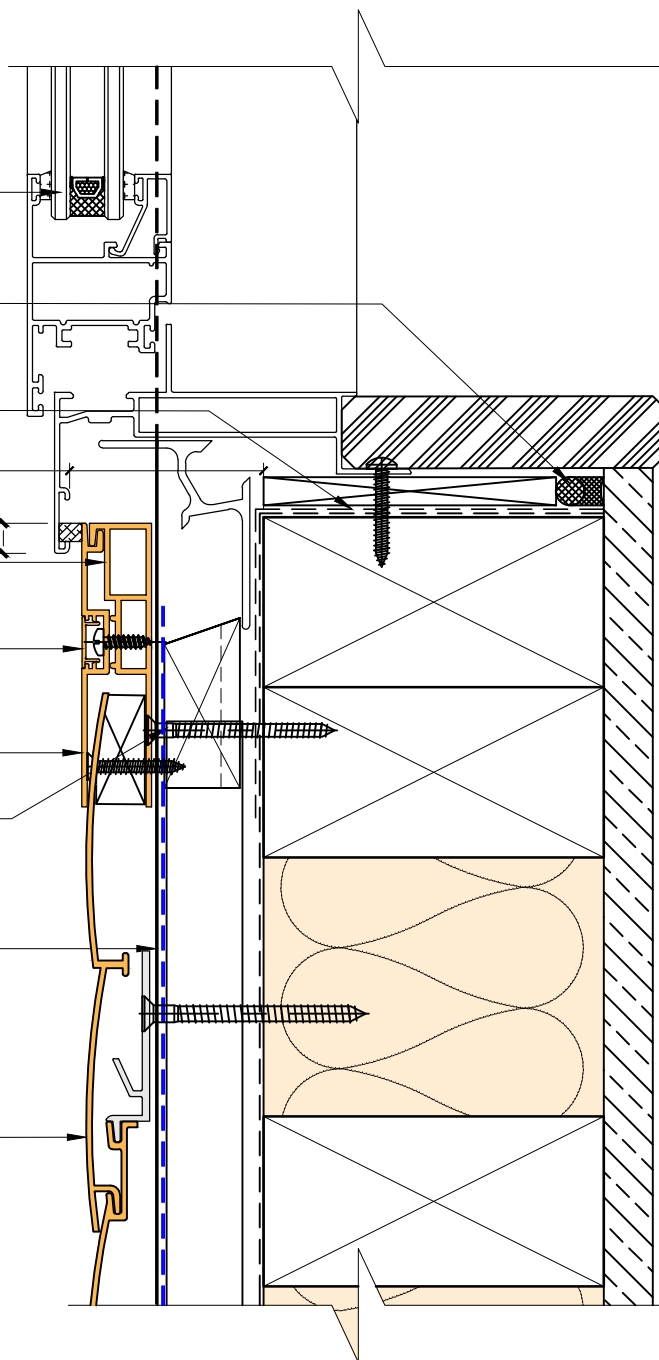
Archimax® AM 016 capping cover clip (4)

Archimax® AM 017 end capping cover part A (5)

Vertical battens

DPC flashing barrier down to Archimax starter

Archimax® AM 700 horizontal weatherboard fixed with clip brackets @ 600mm max centers with 2-8g x 2" csk sq s.s. self tapping screws through the cladding battens (1)



NOTE:

- 1. Minimum clearance between AIR BARRIER and WINDOW JOINERY to be 45mm. Window joinery should not be permanently fixed until cladding been installed.



ARCHIMAX
ALUMINIUM CLADDING SYSTEM
Creating more durable building envelopes
www.archimax.co.nz

System
AM 700 - HORIZONTAL WEATHERBOARD

Detail
ARCHIMAX® WINDOW SILL DETAIL

Drawing No. Rev.
AM-WS-H2.1 D

This drawing is the copyright of Archimax Limited. Modification of details for job specification requirements must be approved by Archimax Ltd. The building designer is ultimately responsible to ensure all building work is designed and constructed according to building code requirements, best code of practice industry guidelines. All components must be supplied by Archimax. Archimax reserves the right to alter or upgrade details at any time without prior notice.

Scale Date
1:2 NOV23

EXTERIOR

INTERIOR

Residential window suite

Air seal by window supplier

Building tape around window opening

45mm

8mm
min cover

35mm
min cover

Archimax® AM 018 end capping cover part B (3)

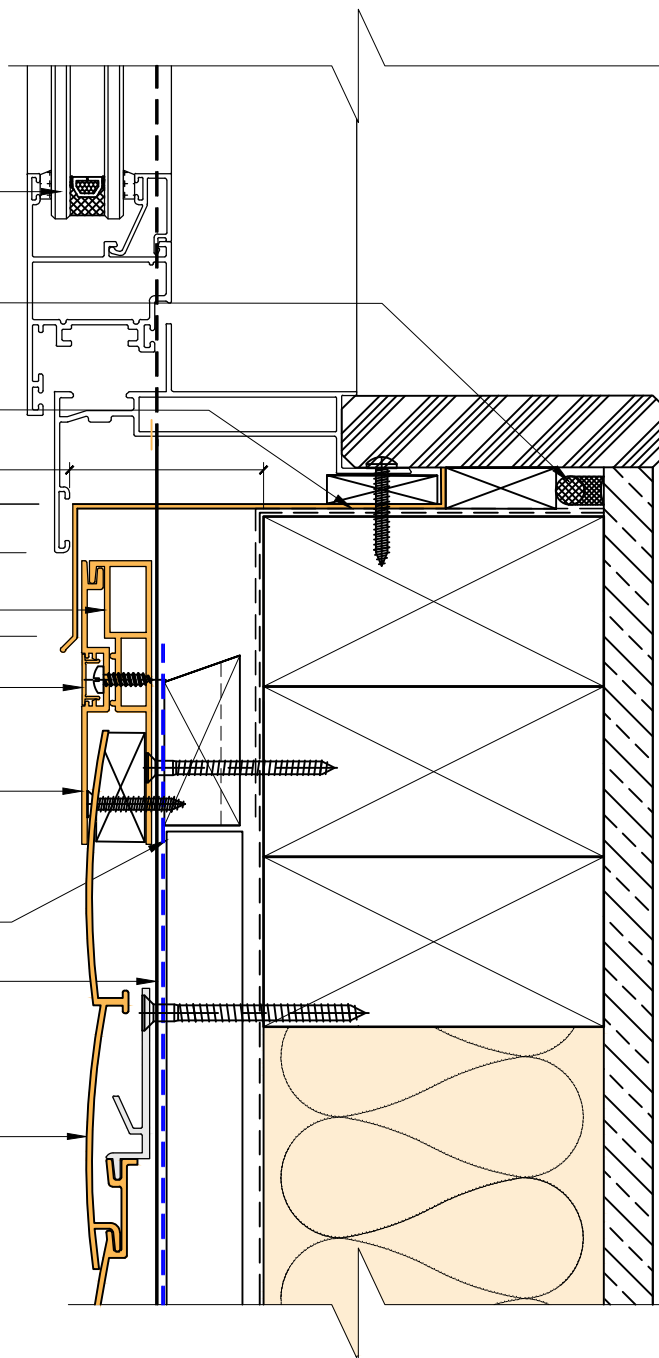
Archimax® AM 016 capping cover clip (4)

Archimax® AM 017 end capping cover part A (5)

Vertical battens

DPC flashing barrier down to Archimax starter

Archimax® AM 700 horizontal weatherboard fixed with clip brackets @ 600mm max centers with 2-8g x 2" csk sq s.s. self tapping screws through the cladding battens (1)



NOTE:

1. Minimum clearance between AIR BARRIER and WINDOW JOINERY to be 45mm. Window joinery should not be permanently fixed until cladding been installed.



System
AM 700 - HORIZONTAL WEATHERBOARD

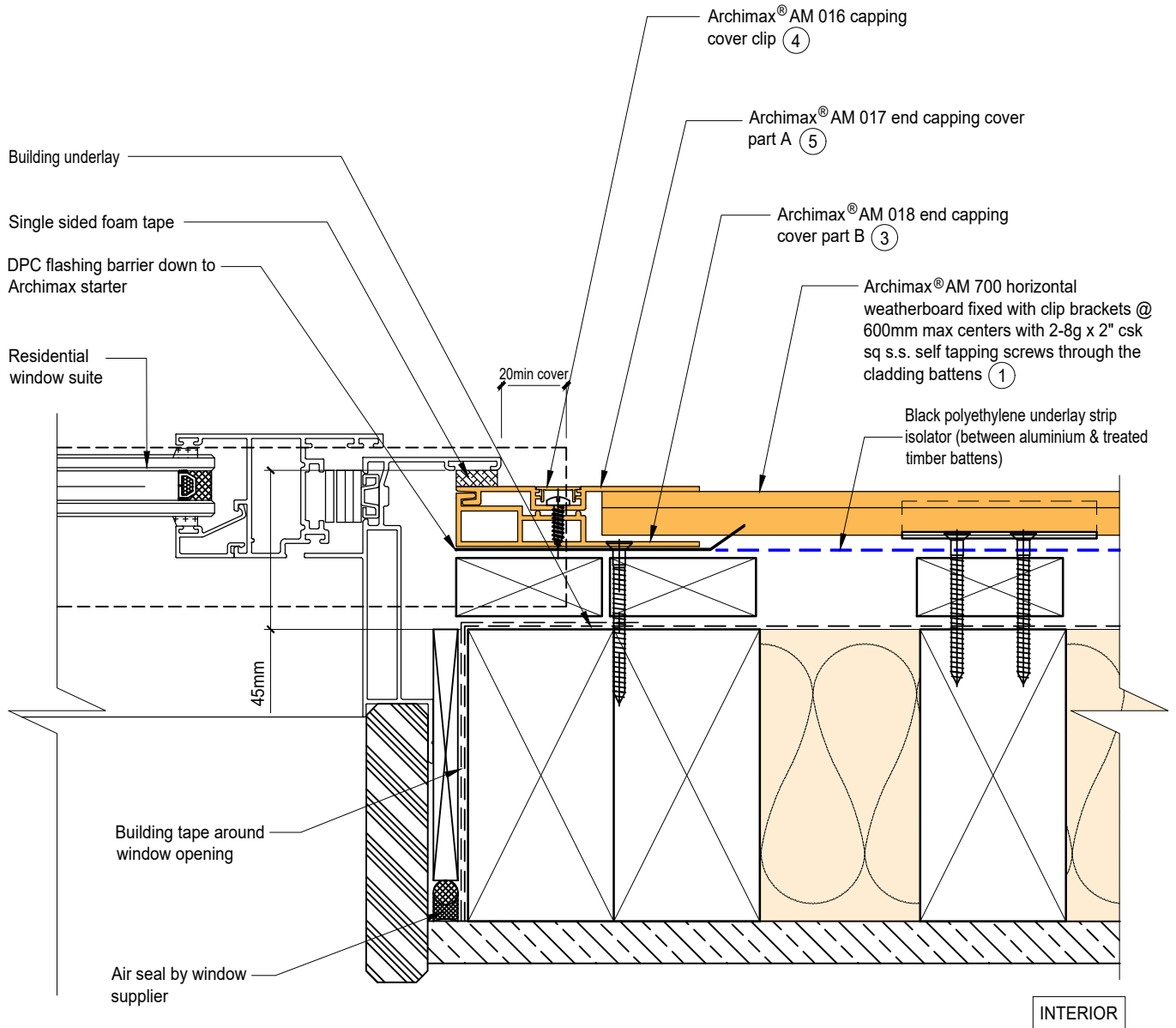
Detail
ARCHIMAX® WINDOW SILL DETAIL

Drawing No. Rev.
AM-WS-H2.2 D

This drawing is the copyright of Archimax Limited. Modification of details for job specification requirements must be approved by Archimax Ltd. The building designer is ultimately responsible to ensure all building work is designed and constructed according to building code requirements, best code of practice industry guidelines. All components must be supplied by Archimax. Archimax reserves the right to alter or upgrade details at any time without prior notice.

Scale Date
1:2 NOV23


EXTERIOR



NOTE:

1. Minimum clearance between AIR BARRIER and WINDOW JOINERY to be 45mm. Window joinery should not be permanently fixed until cladding been installed.



 <p>ARCHIMAX ALUMINIUM CLADDING SYSTEM <i>Creating more durable building envelopes</i> www.archimax.co.nz</p>	<p>System AM 700 - HORIZONTAL WEATHERBOARD</p>	<p>Detail ARCHIMAX® WINDOW JAMB DETAIL</p>	<p>Drawing No. Rev. AM-WJ-H3 D</p>
	<p>This drawing is the copyright of Archimax Limited. Modification of details for job specification requirements must be approved by Archimax Ltd. The building designer is ultimately responsible to ensure all building work is designed and constructed according to building code requirements, best code of practice industry guidelines. All components must be supplied by Archimax. Archimax reserves the right to alter or upgrade details at any time without prior notice.</p>		<p>Scale Date 1:2 NOV23</p>

EXTERIOR

INTERIOR

Building Underlay

Archimax® AM 700 horizontal weatherboard fixed with clip brackets @ 600mm max centers with 2-8g x 2" csk sq s.s. self tapping screws through the cladding battens ①

Black polyethylene underlay strip isolator (between aluminium & treated timber battens)

Vertical battens

Archimax® clip bracket AM 029

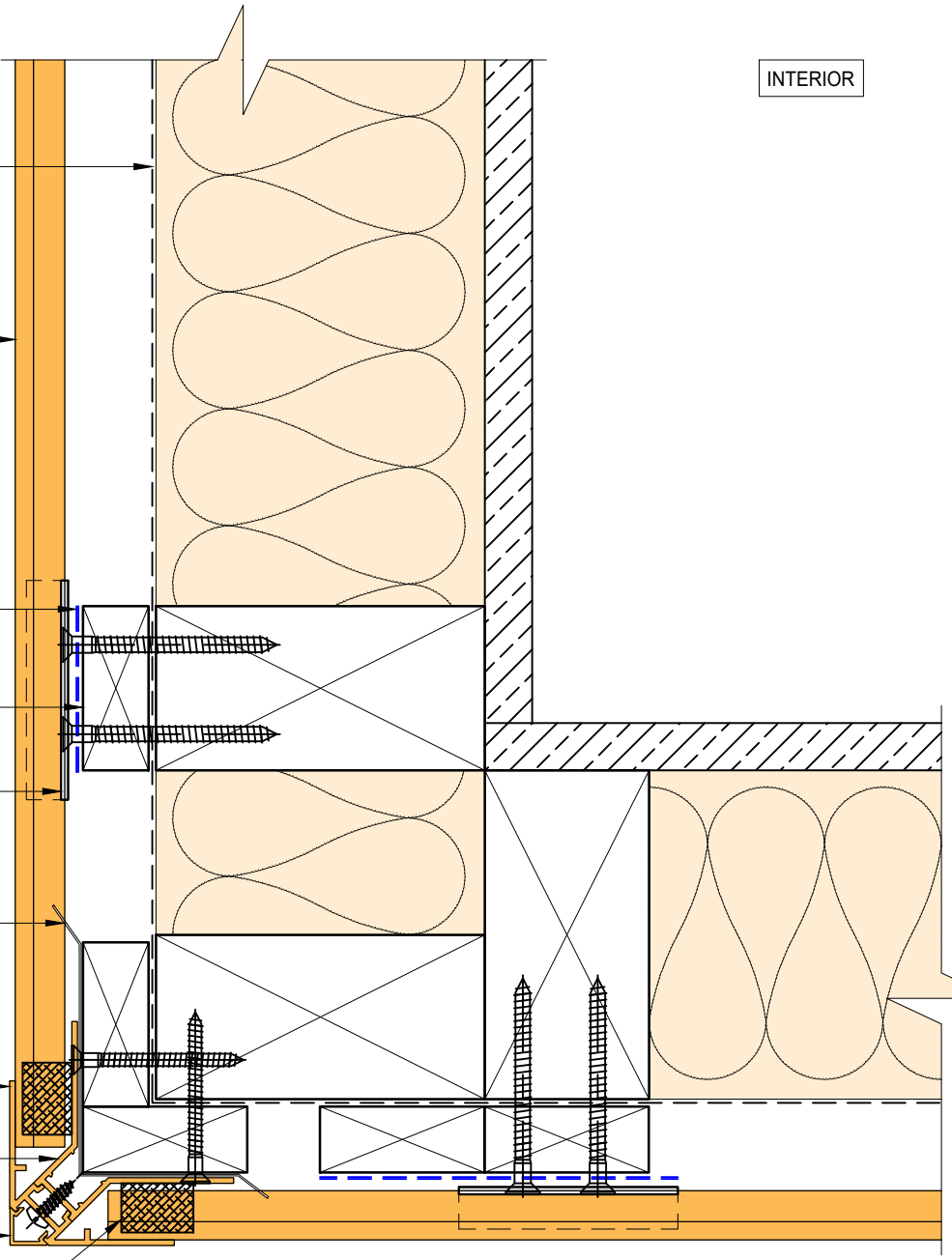
DPC flashing barrier down to Archimax starter

Archimax AM 019 internal/external corner part A ⑦

Archimax AM 022 internal corner part B ⑨

Archimax AM 020 external corner cover clip ⑪

Foam Tape



BRANZ Appraised
Appraisal No. 1173 [2021]

ARCHIMAX
ALUMINIUM CLADDING SYSTEM
Creating more durable building envelopes
www.archimax.co.nz

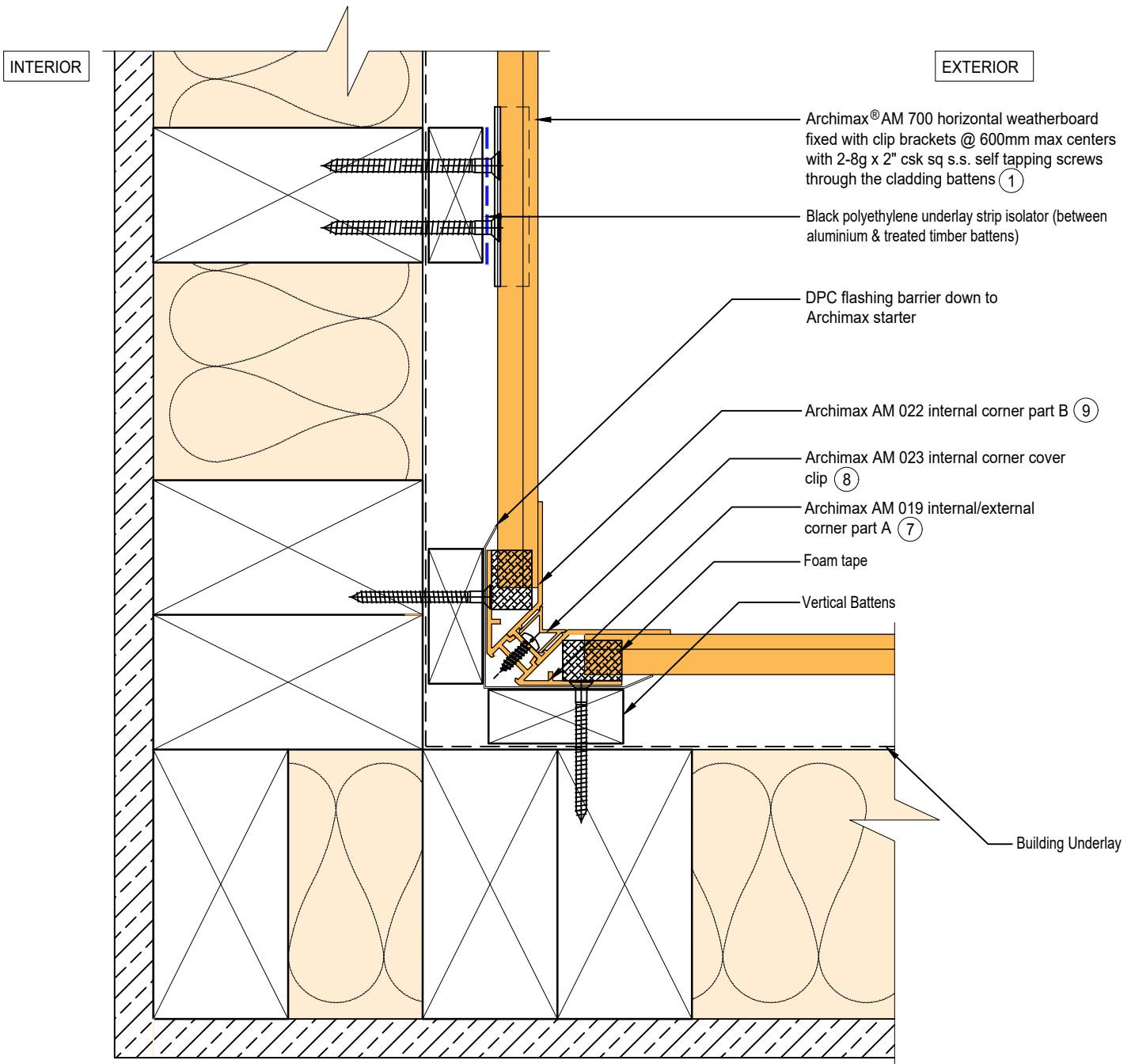
System
AM 700 - HORIZONTAL WEATHERBOARD


Detail
ARCHIMAX® EXTERNAL CORNER DETAIL

Drawing No. Rev.
AM-EXT-H4 D

This drawing is the copyright of Archimax Limited. Modification of details for job specification requirements must be approved by Archimax Ltd. The building designer is ultimately responsible to ensure all building work is designed and constructed according to building code requirements, best code of practice industry guidelines. All components must be supplied by Archimax. Archimax reserves the right to alter or upgrade details at any time without prior notice.

Scale Date
1:2 NOV23



 <p>ARCHIMAX ALUMINIUM CLADDING SYSTEM <i>Creating more durable building envelopes</i> www.archimax.co.nz</p>	<p>System AM 700 - HORIZONTAL WEATHERBOARD</p>	<p>Detail ARCHIMAX® INTERNAL CORNER DETAIL</p>	<p>Drawing No. Rev. AM-INT-H5 D</p>
	<p>This drawing is the copyright of Archimax Limited. Modification of details for job specification requirements must be approved by Archimax Ltd. The building designer is ultimately responsible to ensure all building work is designed and constructed according to building code requirements, best code of practice industry guidelines. All components must be supplied by Archimax. Archimax reserves the right to alter or upgrade details at any time without prior notice.</p>		<p>Scale Date 1:2 NOV23</p>

EXTERIOR

INTERIOR

Castellated timber batten (Vertical)

Archimax® clip bracket AM 029

① Archimax® AM700 horizontal weatherboard fixed with clip brackets @ 600mm max centers with 2-8g x 2" csk sq s.s. self tapping screws through the cladding battens

Building underlay

Black polyethylene underlay strip isolator (between aluminium & treated timber battens)

Cavity vent strip (By others)

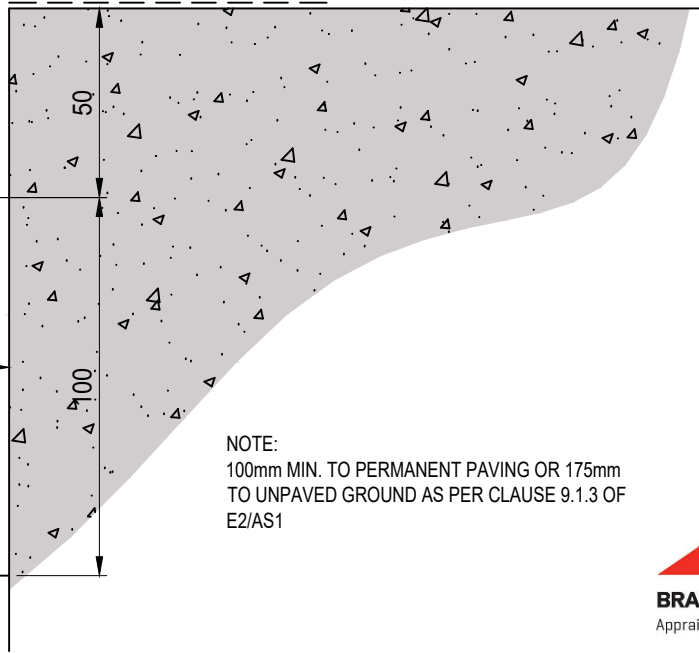
② Archimax® AM 009 board starter

Concrete slab or brickwork (By others)

Finish ground level

Interior lining

Bottom plate over DPC



NOTE:
100mm MIN. TO PERMANENT PAVING OR 175mm
TO UNPAVED GROUND AS PER CLAUSE 9.1.3 OF
E2/AS1



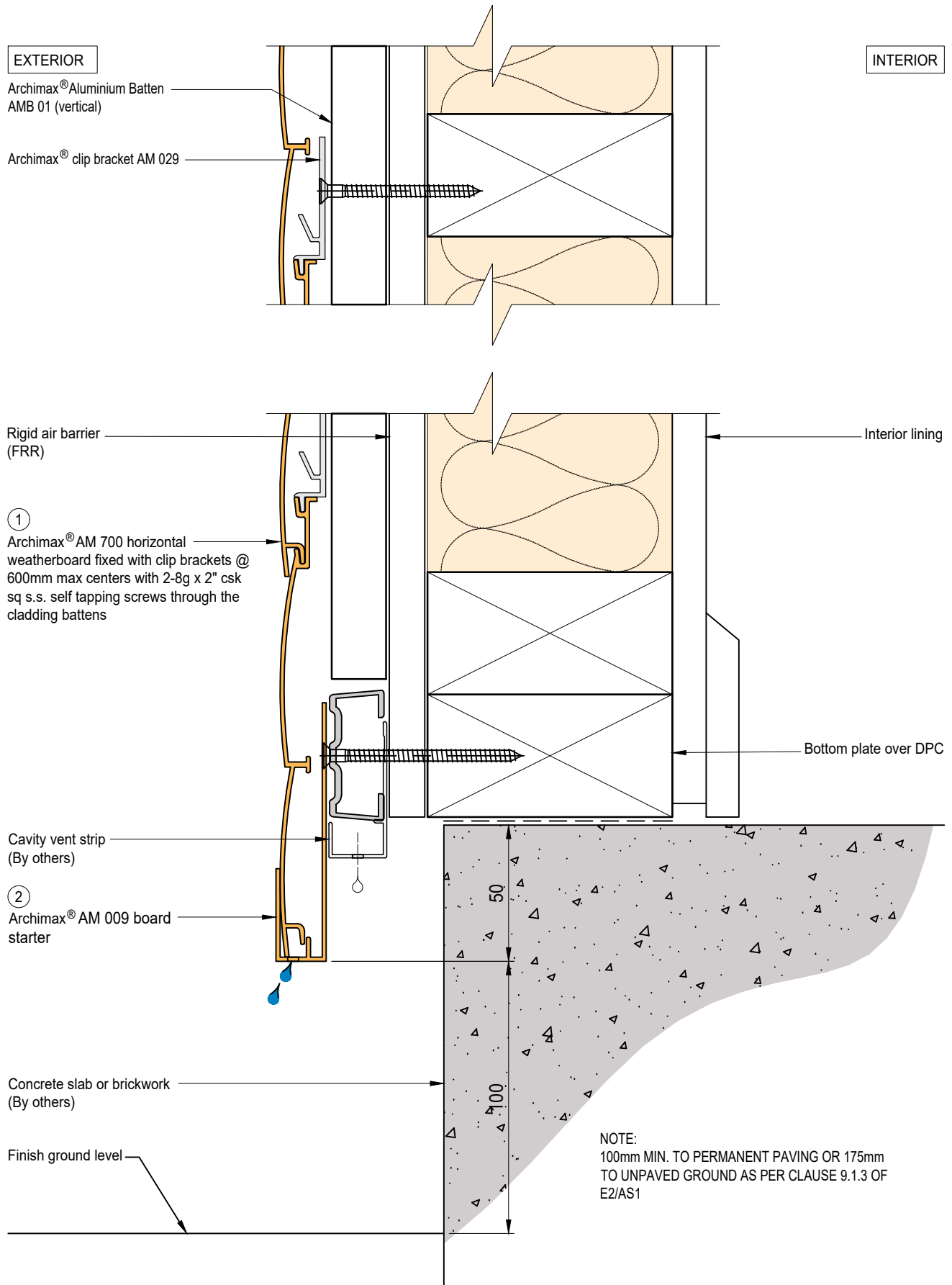
System
AM 700 - HORIZONTAL
WEATHERBOARD

Detail
ARCHIMAX® CONCRETE FLOOR
BOARD STARTER DETAIL - TIMBER

Drawing No. Rev.
AM-CBS-H6.1 D

This drawing is the copyright of Archimax Limited. Modification of details for job specification requirements must be approved by Archimax Ltd. The building designer is ultimately responsible to ensure all building work is designed and constructed according to building code requirements, best code of practice industry guidelines. All components must be supplied by Archimax. Archimax reserves the right to alter or upgrade details at any time without prior notice.

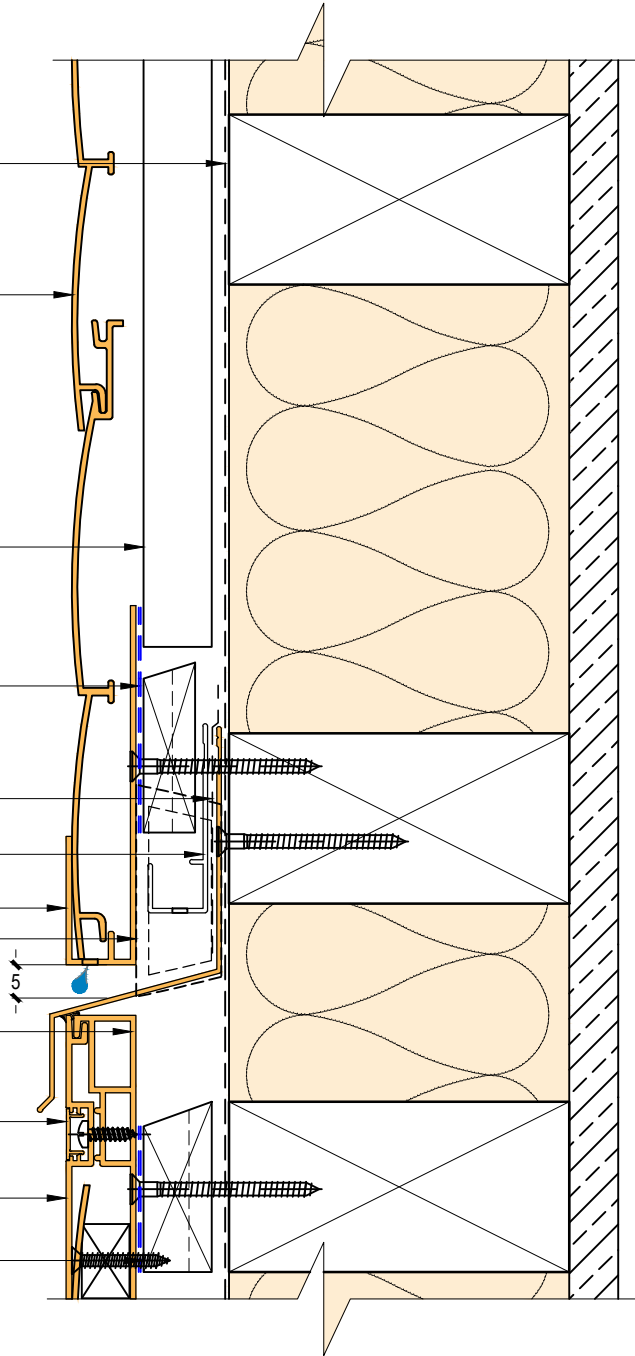
Scale Date
1:2 NOV23



EXTERIOR

INTERIOR

- Building underlay
- Archimax® AM 700 horizontal weatherboard fixed with clip brackets @ 600mm max centers with 2-8g x 2" csk sq s.s. self tapping screws through the cladding battens (1)
- Vertical battens
- Black polyethylene underlay strip isolator (between aluminium & treated timber battens)
- Flexible flashing tape
- Cavity vent strip
- Archimax AM 009 board starter (2)
- Inter-Storey flashing stop ends
- Archimax® AM 018 end capping cover part B (3)
- Archimax® AM 016 capping cover clip (4)
- Archimax® AM 017 end capping cover part A (5)
- Horizontal battens

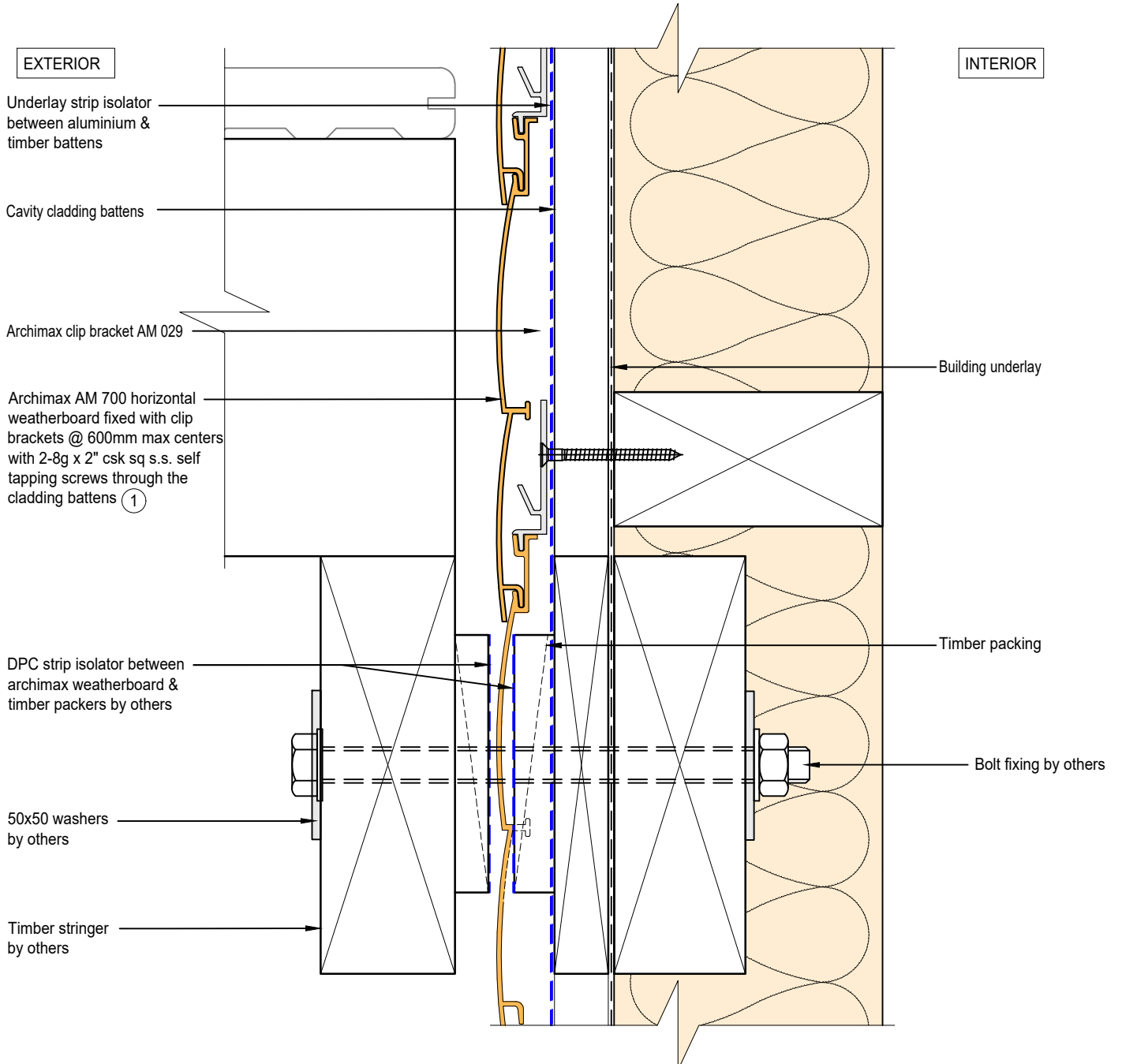


NOTE:
STOP ENDS TO BE INSTALLED AT INTER-STOREY FLASHING ENDS



ARCHIMAX
ALUMINIUM CLADDING SYSTEM
Creating more durable building envelopes
www.archimax.co.nz

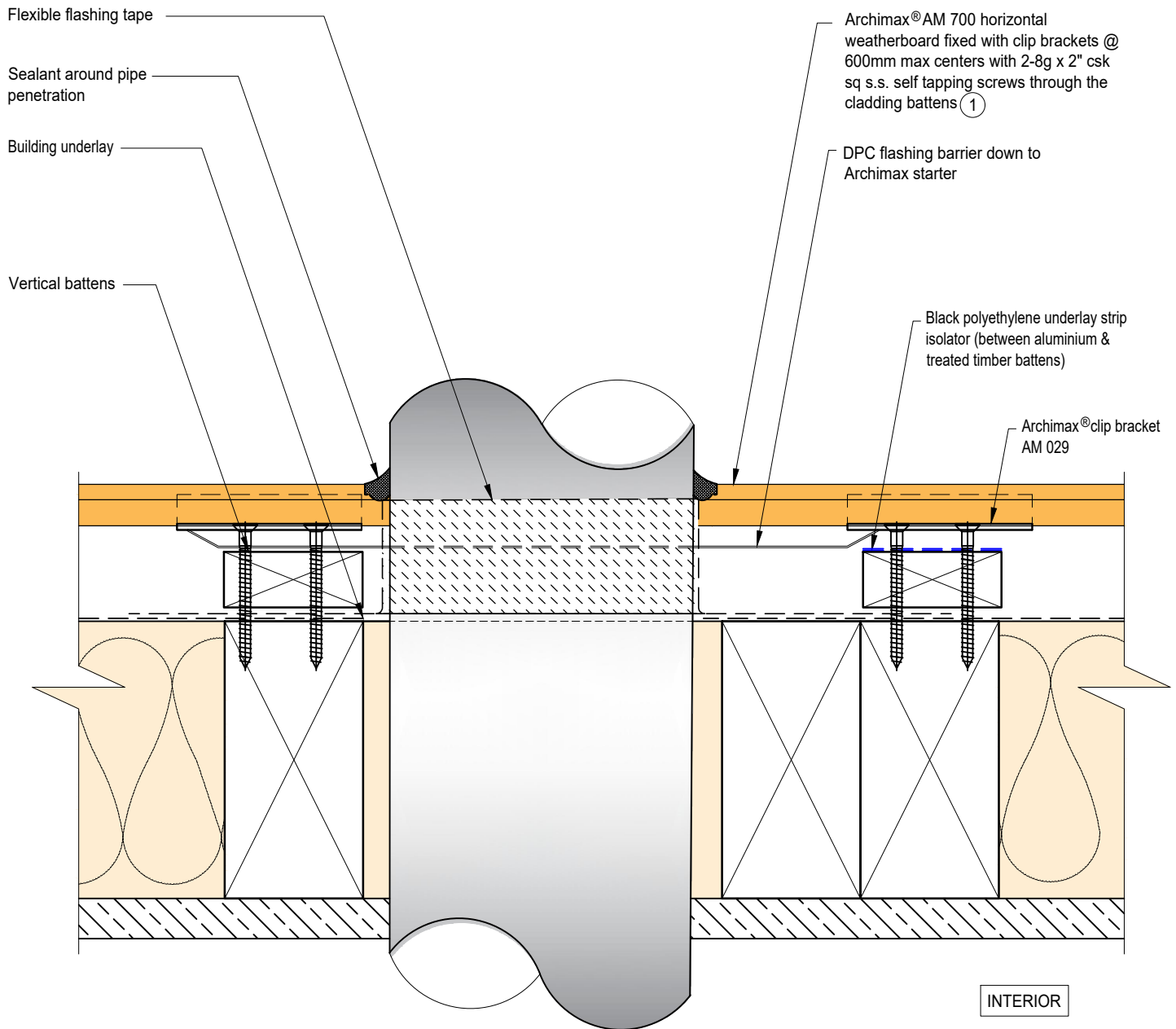
System AM 700 - HORIZONTAL WEATHERBOARD	Detail ARCHIMAX® HORIZONTAL JOINT DETAIL	Drawing No. AM-HJ-H7	Rev. D
This drawing is the copyright of Archimax Limited. Modification of details for job specification requirements must be approved by Archimax Ltd. The building designer is ultimately responsible to ensure all building work is designed and constructed according to building code requirements, best code of practice industry guidelines. All components must be supplied by Archimax. Archimax reserves the right to alter or upgrade details at any time without prior notice.		Scale 1:2	Date NOV23



ARCHIMAX
ALUMINIUM CLADDING SYSTEM
Creating more durable building envelopes
www.archimax.co.nz


System AM 700 - HORIZONTAL WEATHERBOARD	Detail ARCHIMAX® DECK JUNCTION DETAIL	Drawing No. AM-DJ-H8	Rev. D
This drawing is the copyright of Archimax Limited. Modification of details for job specification requirements must be approved by Archimax Ltd. The building designer is ultimately responsible to ensure all building work is designed and constructed according to building code requirements, best code of practice industry guidelines. All components must be supplied by Archimax. Archimax reserves the right to alter or upgrade details at any time without prior notice.		Scale 1:2	Date NOV23

EXTERIOR



INTERIOR



 ARCHIMAX ALUMINIUM CLADDING SYSTEM <i>Creating more durable building envelopes</i> www.archimax.co.nz	System AM 700 - HORIZONTAL WEATHERBOARD	Detail ARCHIMAX® PIPE PENETRATION - PLAN VIEW DETAIL	Drawing No. Rev. AM-PP-H9a D
	This drawing is the copyright of Archimax Limited. Modification of details for job specification requirements must be approved by Archimax Ltd. The building designer is ultimately responsible to ensure all building work is designed and constructed according to building code requirements, best code of practice industry guidelines. All components must be supplied by Archimax. Archimax reserves the right to alter or upgrade details at any time without prior notice.		Scale Date 1:2 NOV23

EXTERIOR

INTERIOR

Archimax® AM 700 horizontal weatherboard fixed with clip brackets @ 600mm max centers with 2-8g x 2" csk sq s.s. self tapping screws through the cladding battens ①

Archimax® clip bracket AM 029

Vertical battens

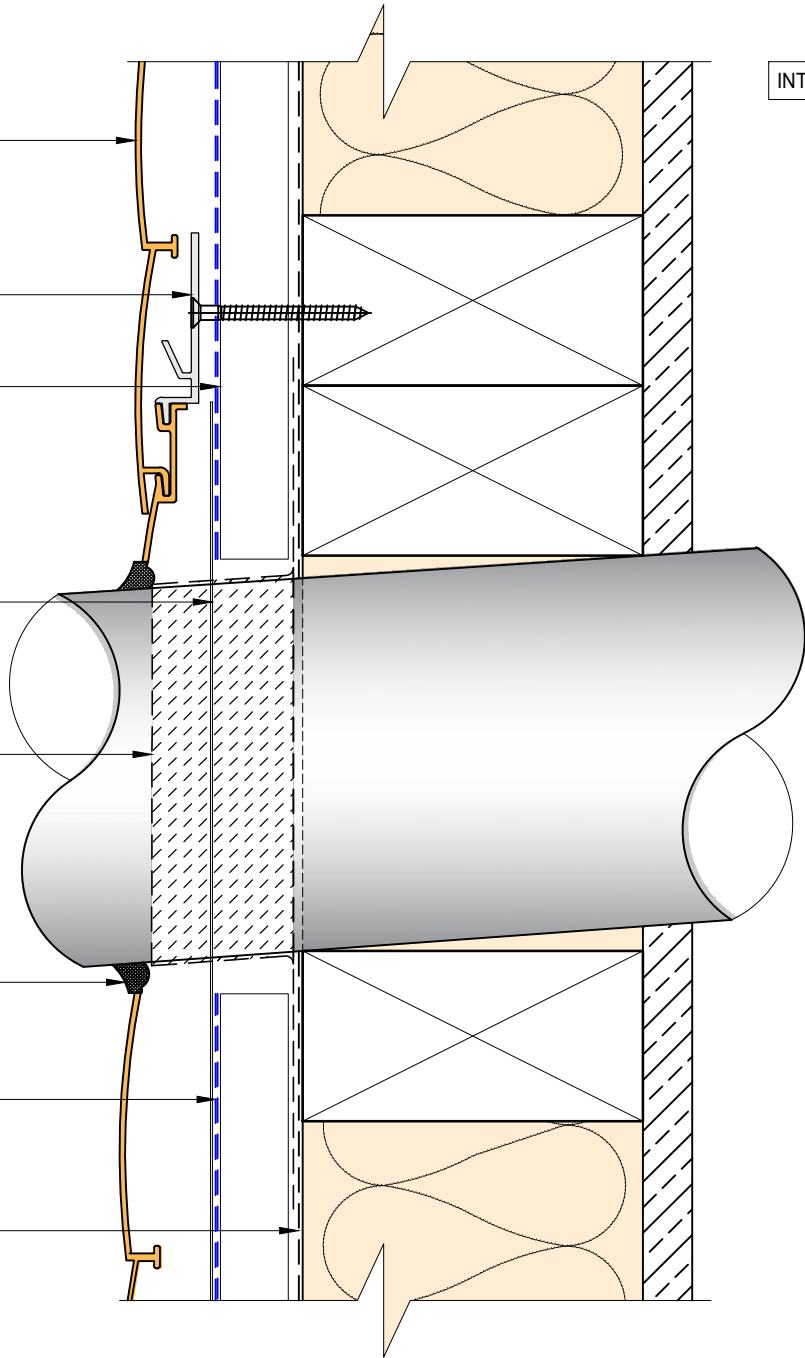
DPC flashing barrier down to Archimax starter

Flexible flashing tape

Sealant around pipe penetration

Black polyethylene underlay strip isolator (between aluminium & treated timber battens)

Building underlay



System
 AM 700 - HORIZONTAL WEATHERBOARD

Detail
 ARCHIMAX® PIPE PENETRATION - SECTION VIEW DETAIL

Drawing No. Rev.
 AM-PP-H9b D

This drawing is the copyright of Archimax Limited. Modification of details for job specification requirements must be approved by Archimax Ltd. The building designer is ultimately responsible to ensure all building work is designed and constructed according to building code requirements, best code of practice industry guidelines. All components must be supplied by Archimax. Archimax reserves the right to alter or upgrade details at any time without prior notice.

Scale Date
 1:2 NOV23

EXTERIOR

INTERIOR

Compressible foam tape

Archimax® AM 018 end capping cover part B (3)

Archimax® AM 016 capping cover clip (4)

Archimax® AM 017 end capping cover part A (5)

Solid packer

Horizontal battens

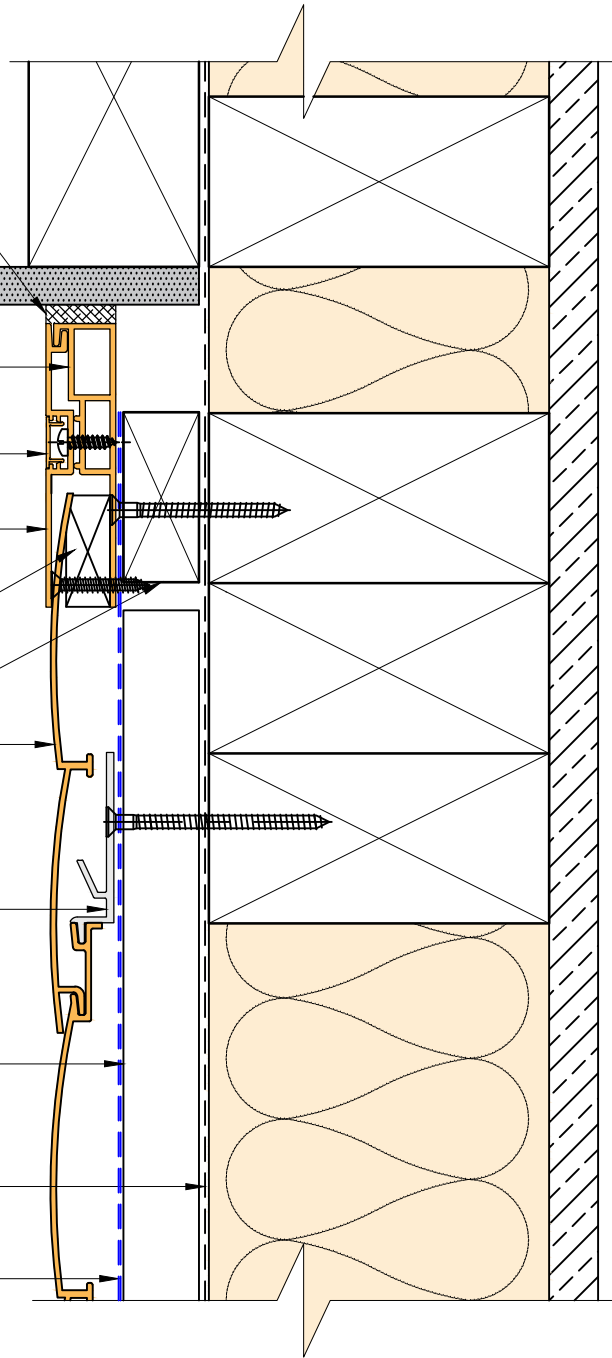
Archimax® AM 700 horizontal weatherboard fixed with clip brackets @ 600mm max centers with 2-8g x 2" csk sq s.s. self tapping screws through the cladding battens (1)

Archimax® clip bracket AM 029

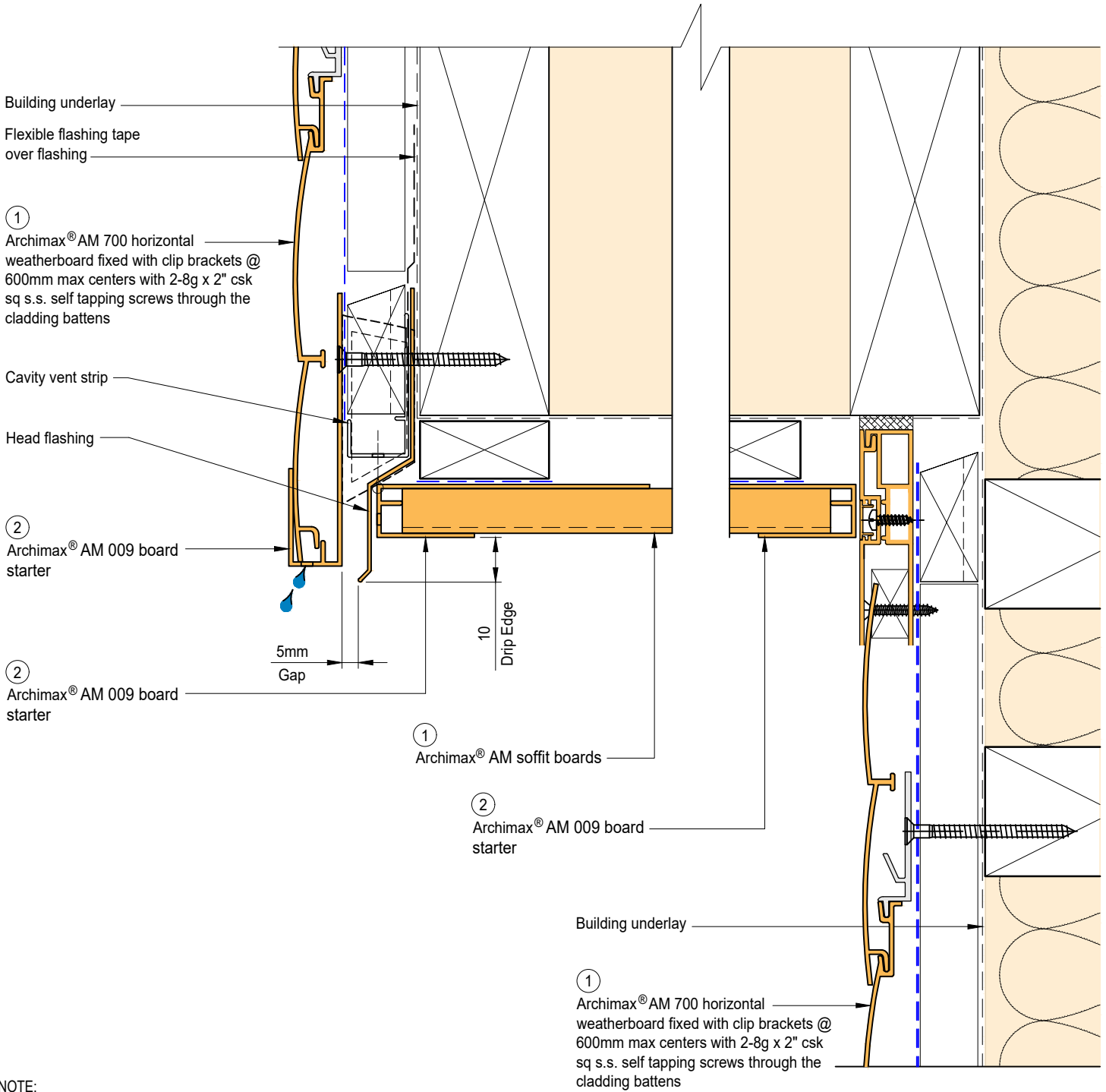
Vertical battens

Building underlay

Black polyethylene underlay strip isolator (between aluminium & treated timber battens)




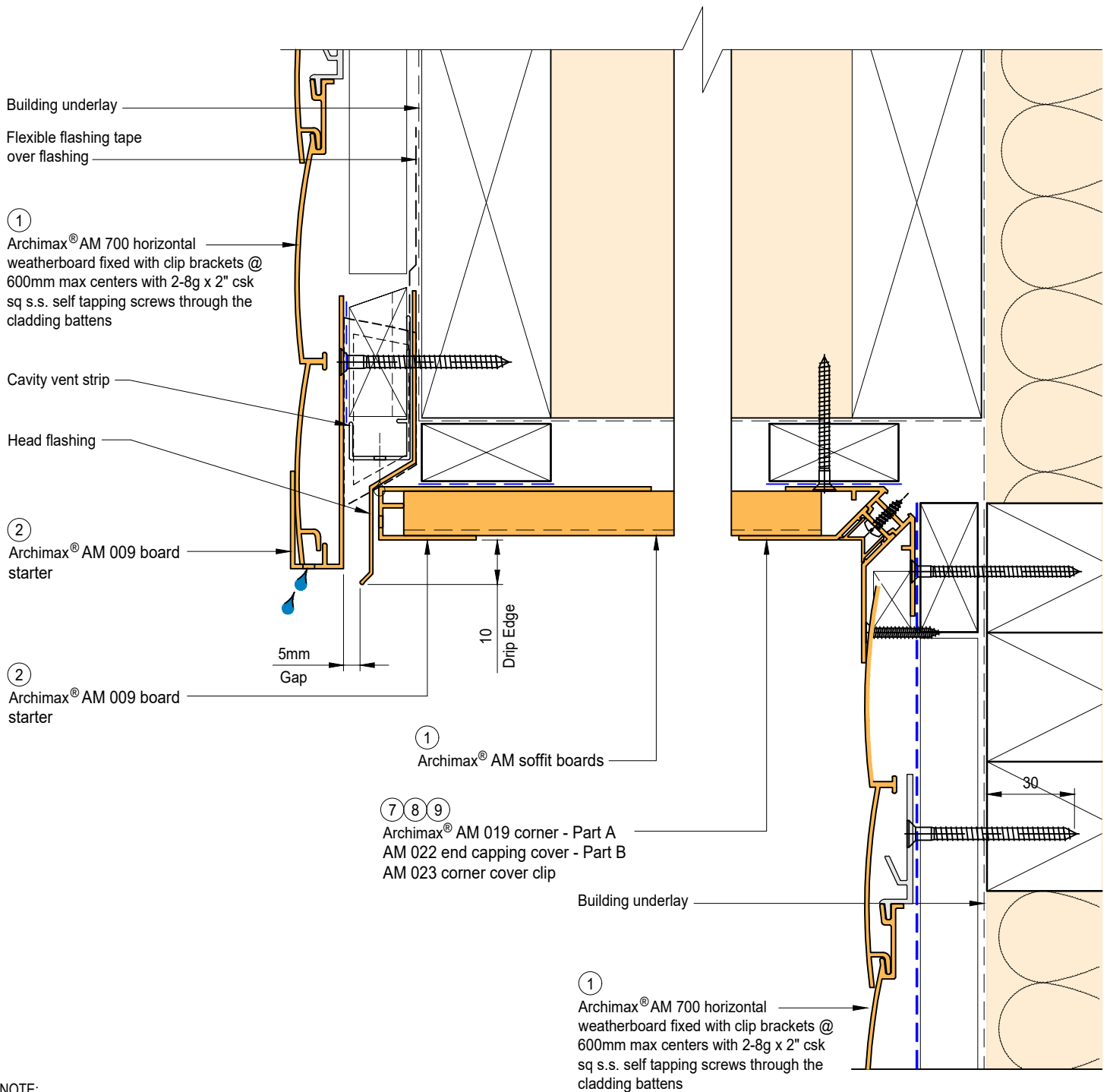
BRANZ Appraised
Appraisal No. 1173 [2021]



NOTE:
STOP ENDS TO BE INSTALLED AT FLASHING ENDS




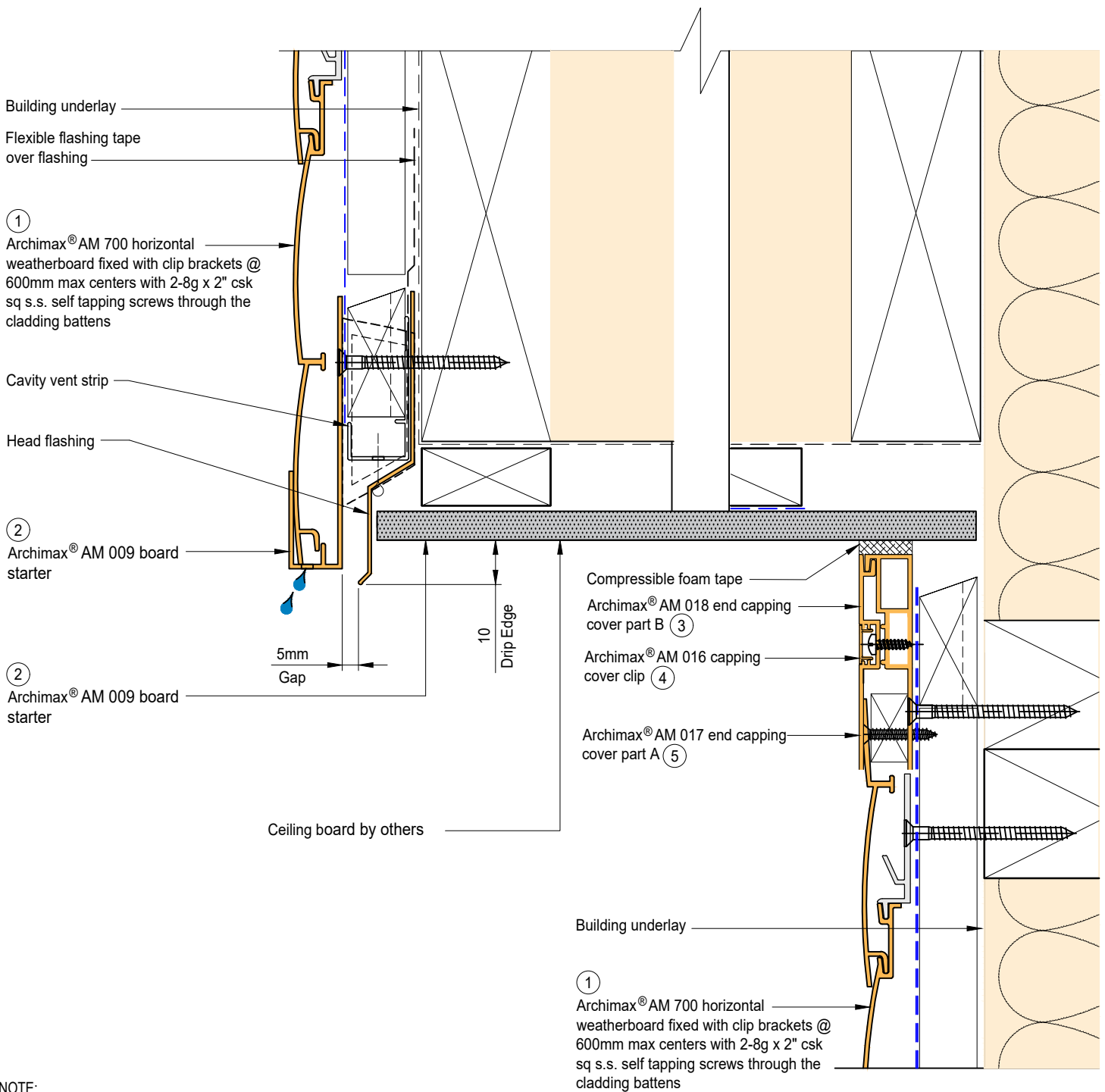
 <p>ARCHIMAX ALUMINIUM CLADDING SYSTEM <i>Creating more durable building envelopes</i> www.archimax.co.nz</p>	<p>System AM 700 - HORIZONTAL WEATHERBOARD</p>	<p>Detail ARCHIMAX® FASCIA, SOFFIT & WALL DETAIL</p>	<p>Drawing No. Rev. AM-SO-H11.1 D</p>
	<p>This drawing is the copyright of Archimax Limited. Modification of details for job specification requirements must be approved by Archimax Ltd. The building designer is ultimately responsible to ensure all building work is designed and constructed according to building code requirements, best code of practice industry guidelines. All components must be supplied by Archimax. Archimax reserves the right to alter or upgrade details at any time without prior notice.</p>		<p>Scale Date 1:2 NOV23</p>




NOTE:
STOP ENDS TO BE INSTALLED AT FLASHING ENDS



 <p>ARCHIMAX ALUMINIUM CLADDING SYSTEM <i>Creating more durable building envelopes</i> www.archimax.co.nz</p>	<p>System AM 700 - HORIZONTAL WEATHERBOARD</p>	<p>Detail ARCHIMAX® FASCIA, SOFFIT & WALL DETAIL (90° SOFFIT / WALL) DETAIL</p>	<p>Drawing No. Rev. AM-SO-H11.2 D</p>
	<p>This drawing is the copyright of Archimax Limited. Modification of details for job specification requirements must be approved by Archimax Ltd. The building designer is ultimately responsible to ensure all building work is designed and constructed according to building code requirements, best code of practice industry guidelines. All components must be supplied by Archimax. Archimax reserves the right to alter or upgrade details at any time without prior notice.</p>		<p>Scale Date 1:2 NOV23</p>



 <p>ARCHIMAX ALUMINIUM CLADDING SYSTEM <i>Creating more durable building envelopes</i> www.archimax.co.nz</p>	<p>System AM 700 - HORIZONTAL WEATHERBOARD</p>	<p>Detail ARCHIMAX® FASCIA, BOARD SOFFIT & WALL DETAIL</p>	<p>Drawing No. Rev. AM-SO-H11.3 D</p>	
	<p>This drawing is the copyright of Archimax Limited. Modification of details for job specification requirements must be approved by Archimax Ltd. The building designer is ultimately responsible to ensure all building work is designed and constructed according to building code requirements, best code of practice industry guidelines. All components must be supplied by Archimax. Archimax reserves the right to alter or upgrade details at any time without prior notice.</p>		<p>Scale 1:2</p>	<p>Date NOV23</p>

EXTERIOR

Selected roofing

Flashing & sealed by others

Archimax® AM 018 end capping cover part B (3)

Archimax® AM 016 capping cover clip (4)

Archimax® AM 017 end capping cover part A (5)

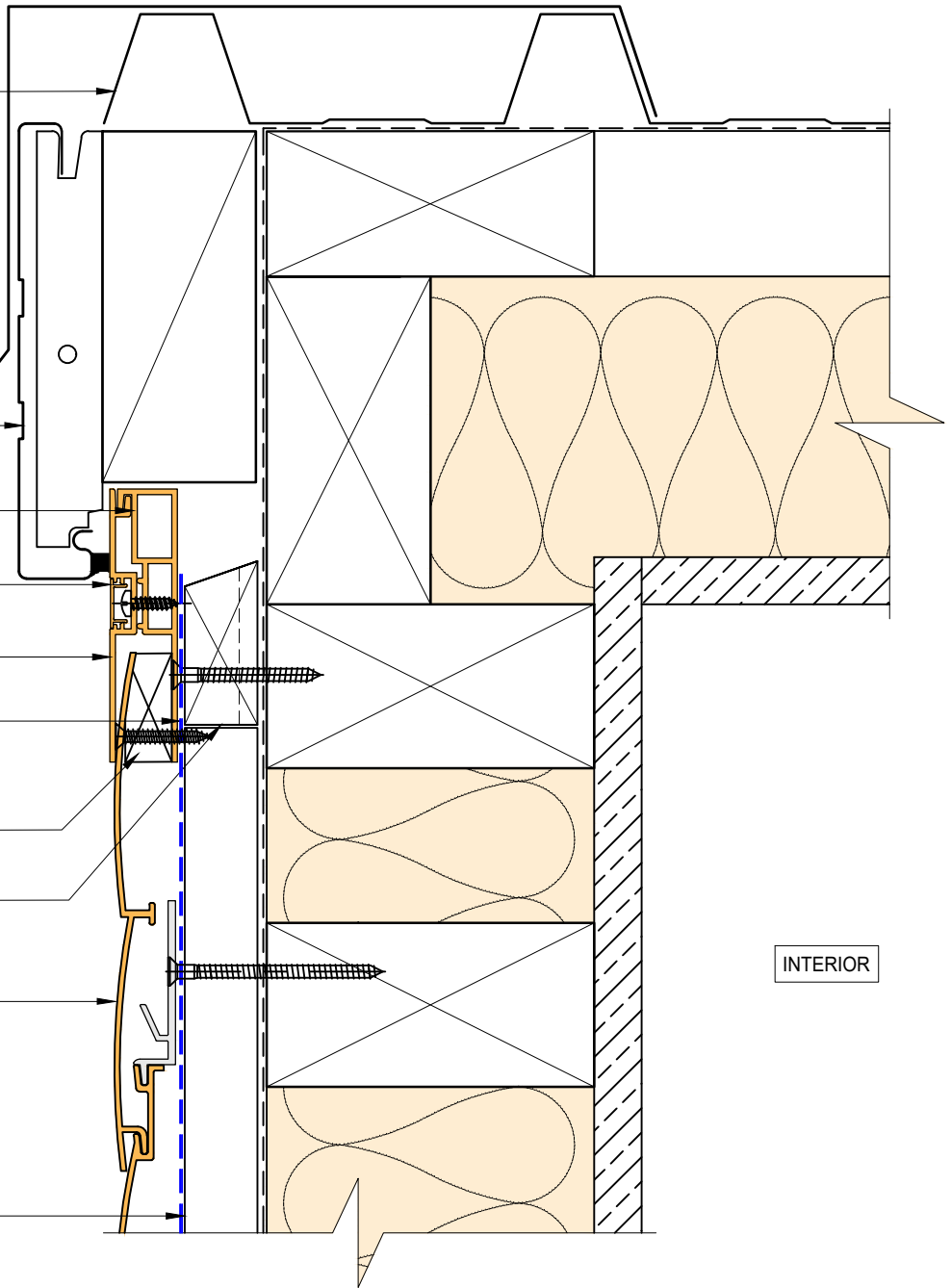
Black polyethylene underlay strip isolator (between aluminium & treated timber battens)

Solid packer

Horizontal battens

Archimax® AM 700 horizontal weatherboard fixed with clip brackets @ 600mm max centers with 2-8g x 2" csk sq s.s. self tapping screws through the cladding battens (1)

Vertical battens



INTERIOR



BRANZ Appraised
Appraisal No. 1173 [2021]



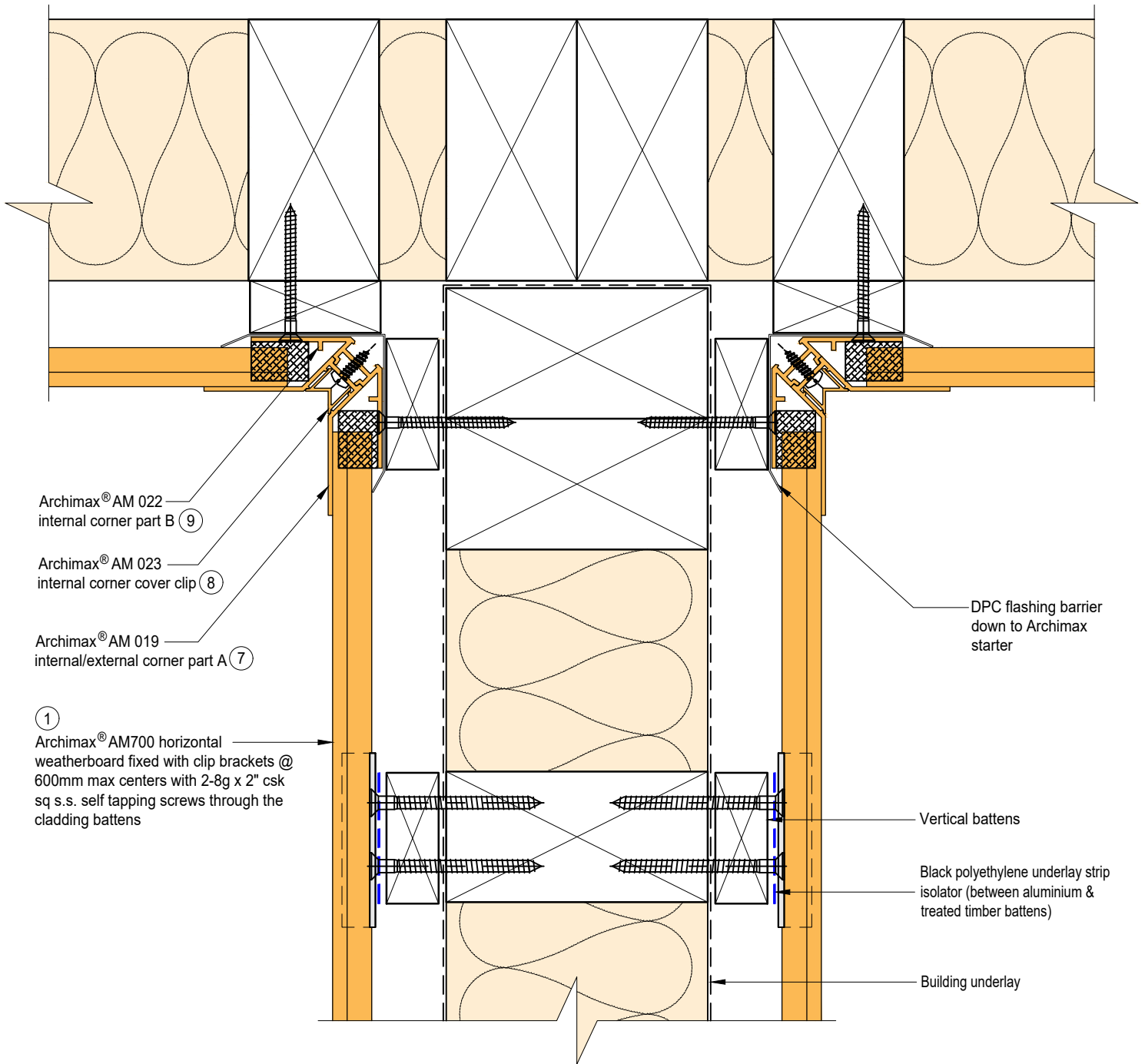
System
AM 700 - HORIZONTAL
WEATHERBOARD

Detail
ARCHIMAX® NON - SOFFIT DETAIL


Drawing No. Rev.
AM-NSO-H12 D

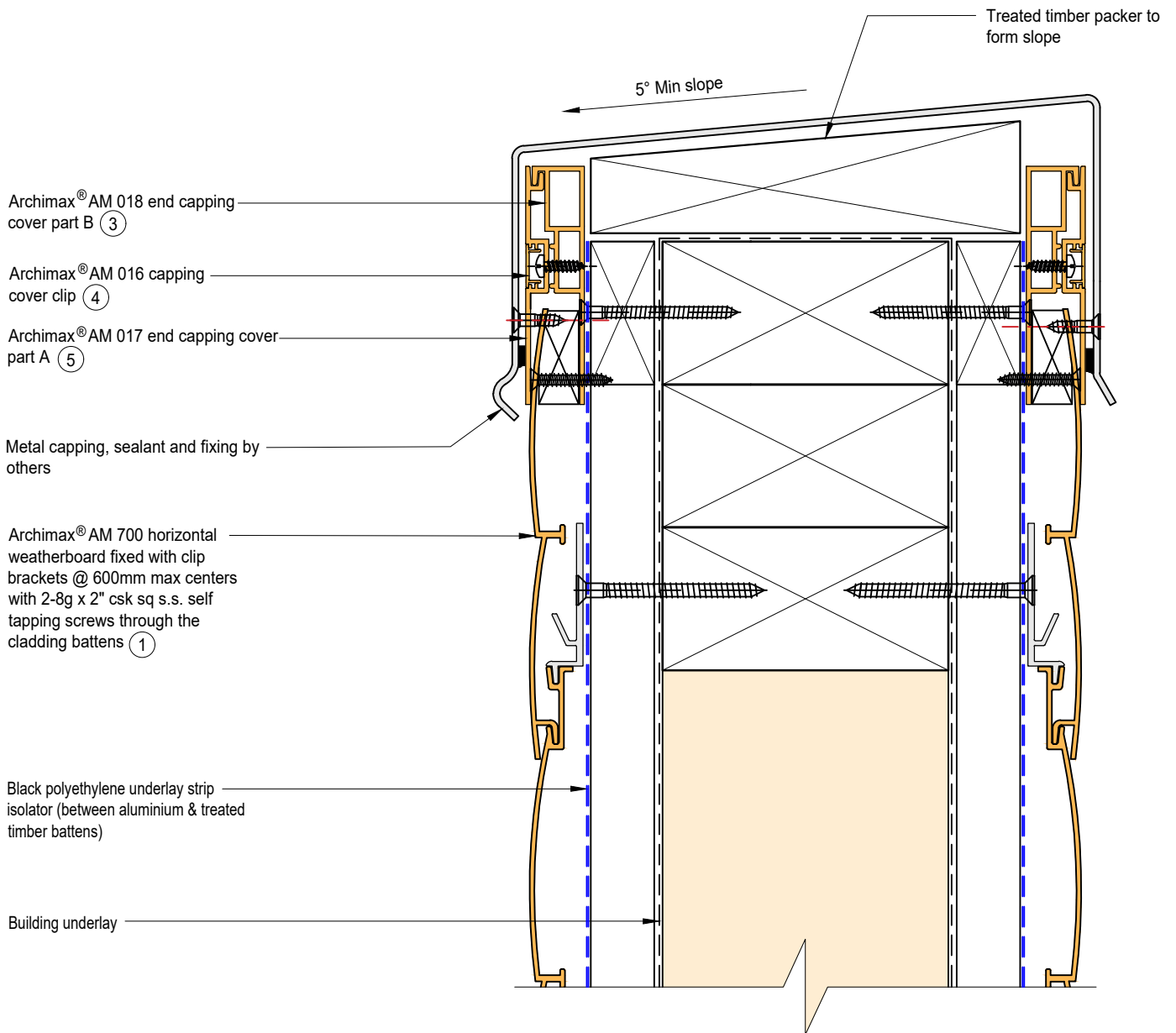
This drawing is the copyright of Archimax Limited. Modification of details for job specification requirements must be approved by Archimax Ltd. The building designer is ultimately responsible to ensure all building work is designed and constructed according to building code requirements, best code of practice industry guidelines. All components must be supplied by Archimax. Archimax reserves the right to alter or upgrade details at any time without prior notice.

Scale Date
1:2 NOV23



BRANZ Appraised
Appraisal No. 1173 [2021]

 <p>ARCHIMAX ALUMINIUM CLADDING SYSTEM <i>Creating more durable building envelopes</i> www.archimax.co.nz</p>	<p>System AM 700 - HORIZONTAL WEATHERBOARD</p>	<p>Detail ARCHIMAX® INTERNAL CORNER JUNCTION DETAIL</p>	<p>Drawing No. Rev. AM-BJ-H13 D</p>
	<p>This drawing is the copyright of Archimax Limited. Modification of details for job specification requirements must be approved by Archimax Ltd. The building designer is ultimately responsible to ensure all building work is designed and constructed according to building code requirements, best code of practice industry guidelines. All components must be supplied by Archimax. Archimax reserves the right to alter or upgrade details at any time without prior notice.</p>		<p>Scale Date 1:2 NOV23</p>



ARCHIMAX
ALUMINIUM CLADDING SYSTEM
Creating more durable building envelopes
www.archimax.co.nz

System AM 700 - HORIZONTAL WEATHERBOARD	Detail ARCHIMAX® PARAPET WITH CAVITY DETAIL	Drawing No. Rev. AM-PAR-H14 D
This drawing is the copyright of Archimax Limited. Modification of details for job specification requirements must be approved by Archimax Ltd. The building designer is ultimately responsible to ensure all building work is designed and constructed according to building code requirements, best code of practice industry guidelines. All components must be supplied by Archimax. Archimax reserves the right to alter or upgrade details at any time without prior notice.		Scale Date 1:2 NOV23

EXTERIOR

INTERIOR

Building underlay
Archimax® AM 700 horizontal weatherboard fixed with clip brackets @ 600mm max centers with 2-8g x 2" csk sq s.s. self tapping screws through the cladding battens ①

Vertical battens

Black polyethylene underlay strip isolator (between aluminium & treated timber battens)

Flexible flashing tape

Cavity vent strip

Archimax® AM 009 board starter ②

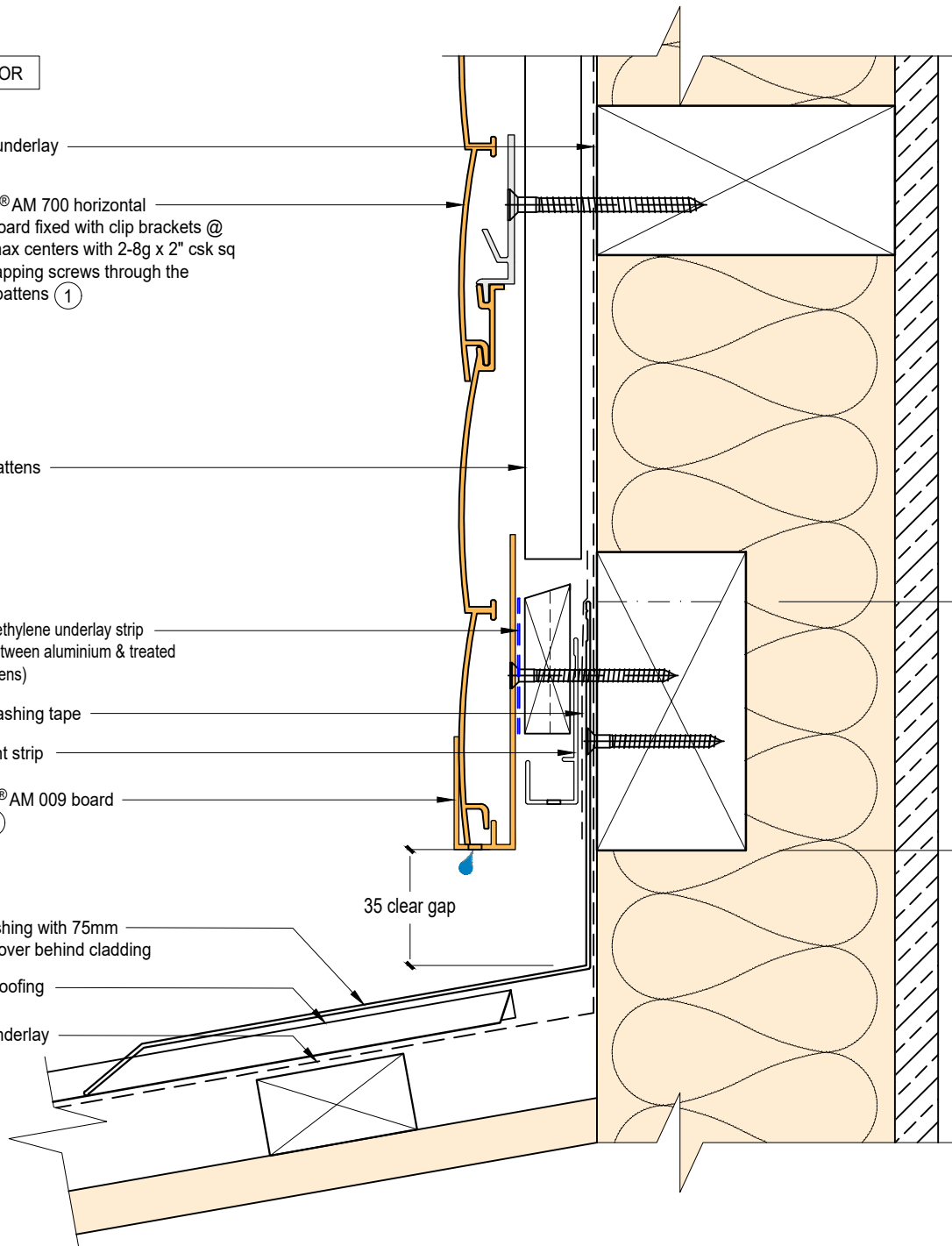
Apron flashing with 75mm upstand cover behind cladding

Selected roofing

Roofing underlay

35 clear gap

75mm min flashing leg above bottom of cladding



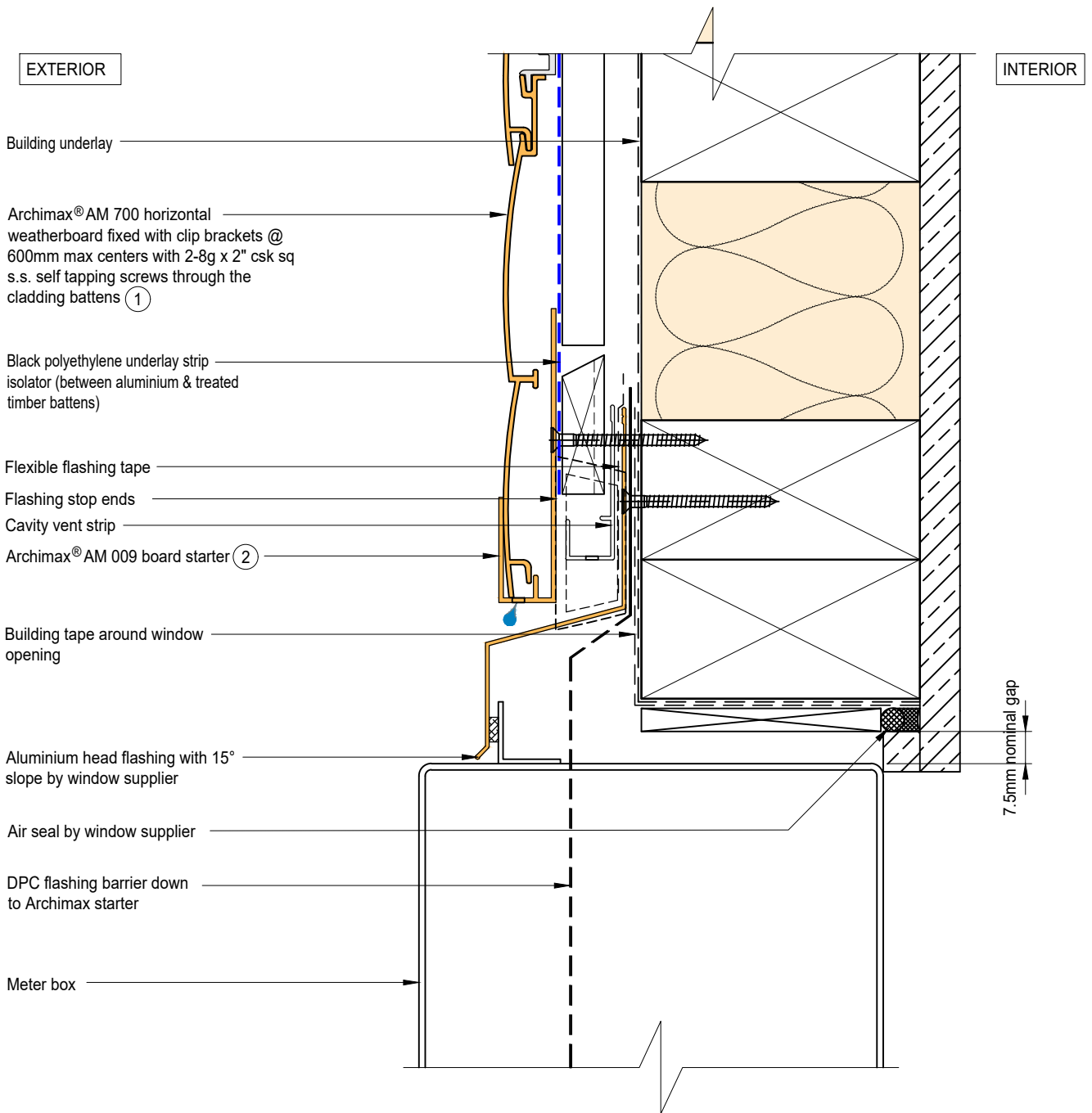
System
AM 700 - HORIZONTAL WEATHERBOARD

Detail
ARCHIMAX® LOWER ROOF WALL JUNCTION DETAIL

Drawing No. Rev.
AM-RW-H15 D


This drawing is the copyright of Archimax Limited. Modification of details for job specification requirements must be approved by Archimax Ltd. The building designer is ultimately responsible to ensure all building work is designed and constructed according to building code requirements, best code of practice industry guidelines. All components must be supplied by Archimax. Archimax reserves the right to alter or upgrade details at any time without prior notice.

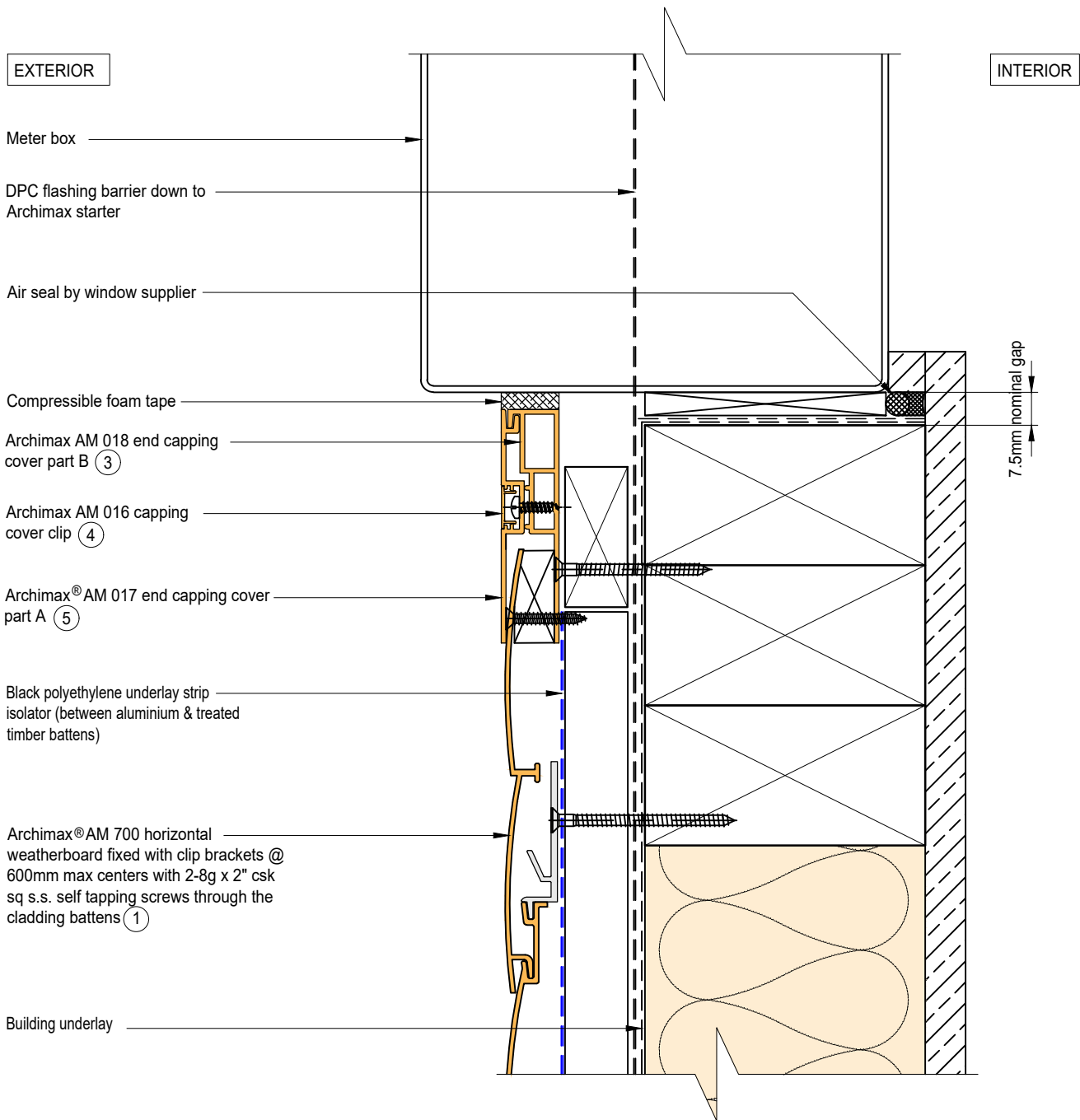
Scale Date
1:2 NOV23




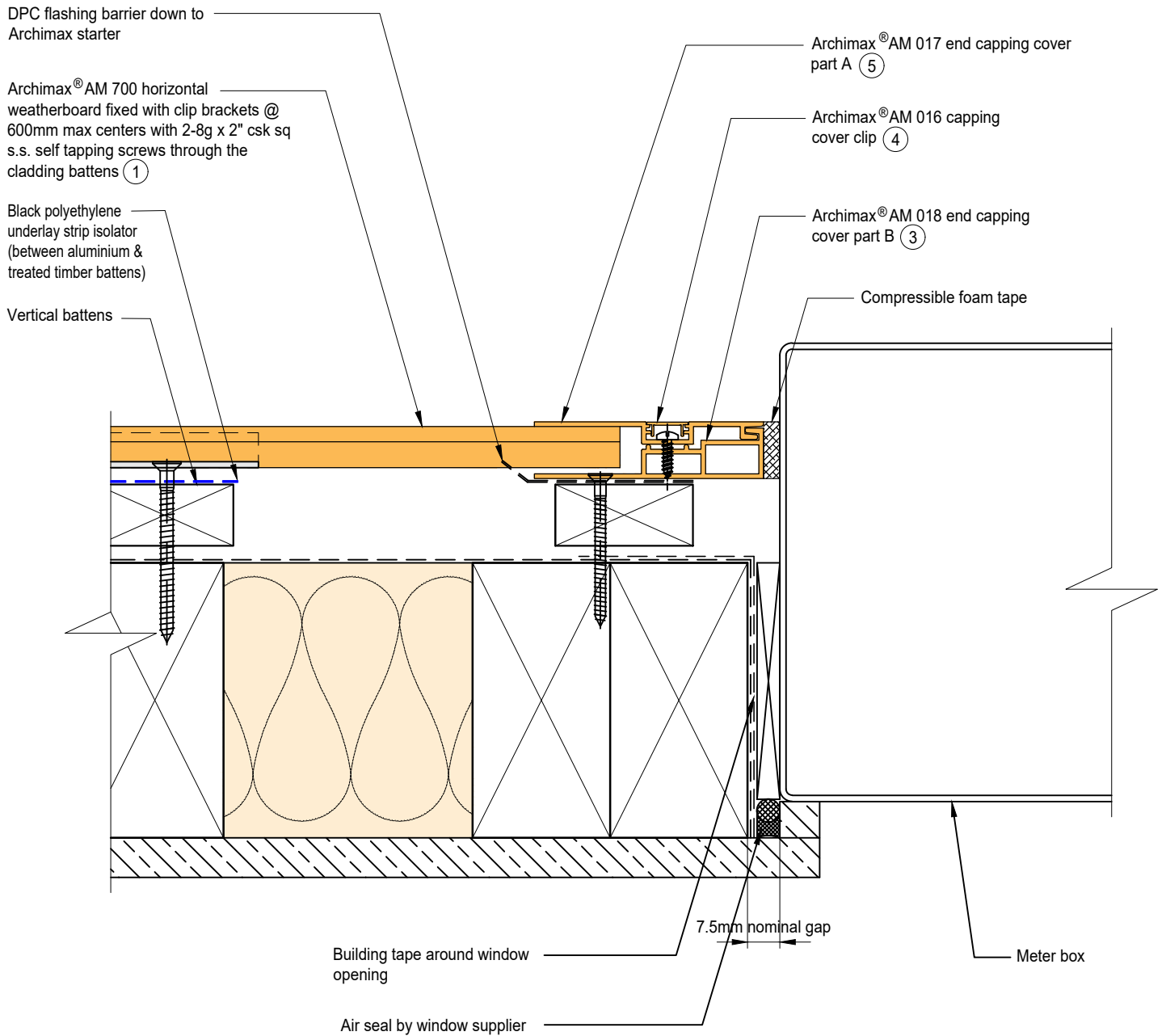
NOTE:
STOP ENDS TO BE INSTALLED AT FLASHING ENDS



 <p>ARCHIMAX ALUMINIUM CLADDING SYSTEM <i>Creating more durable building envelopes</i> www.archimax.co.nz</p>	<p>System AM 700 - HORIZONTAL WEATHERBOARD</p>	<p>Detail ARCHIMAX® METER BOX HEAD DETAIL</p>	<p>Drawing No. Rev. AM-MB-H16 D</p>
	<p>This drawing is the copyright of Archimax Limited. Modification of details for job specification requirements must be approved by Archimax Ltd. The building designer is ultimately responsible to ensure all building work is designed and constructed according to building code requirements, best code of practice industry guidelines. All components must be supplied by Archimax. Archimax reserves the right to alter or upgrade details at any time without prior notice.</p>		<p>Scale Date 1:2 NOV23</p>



 <p>ARCHIMAX ALUMINIUM CLADDING SYSTEM <i>Creating more durable building envelopes</i> www.archimax.co.nz</p>	<p>System AM 700 - HORIZONTAL WEATHERBOARD</p>	<p>Detail ARCHIMAX® METER BOX SILL DETAIL</p>	<p>Drawing No. Rev. AM-MB-H17 D</p>
	<p>This drawing is the copyright of Archimax Limited. Modification of details for job specification requirements must be approved by Archimax Ltd. The building designer is ultimately responsible to ensure all building work is designed and constructed according to building code requirements, best code of practice industry guidelines. All components must be supplied by Archimax. Archimax reserves the right to alter or upgrade details at any time without prior notice.</p>		<p>Scale Date 1:2 NOV23</p>




ARCHIMAX
 ALUMINIUM CLADDING SYSTEM
Creating more durable building envelopes
 www.archimax.co.nz

System
 AM 700 - HORIZONTAL WEATHERBOARD

Detail
 ARCHIMAX® METER BOX JAMB DETAIL

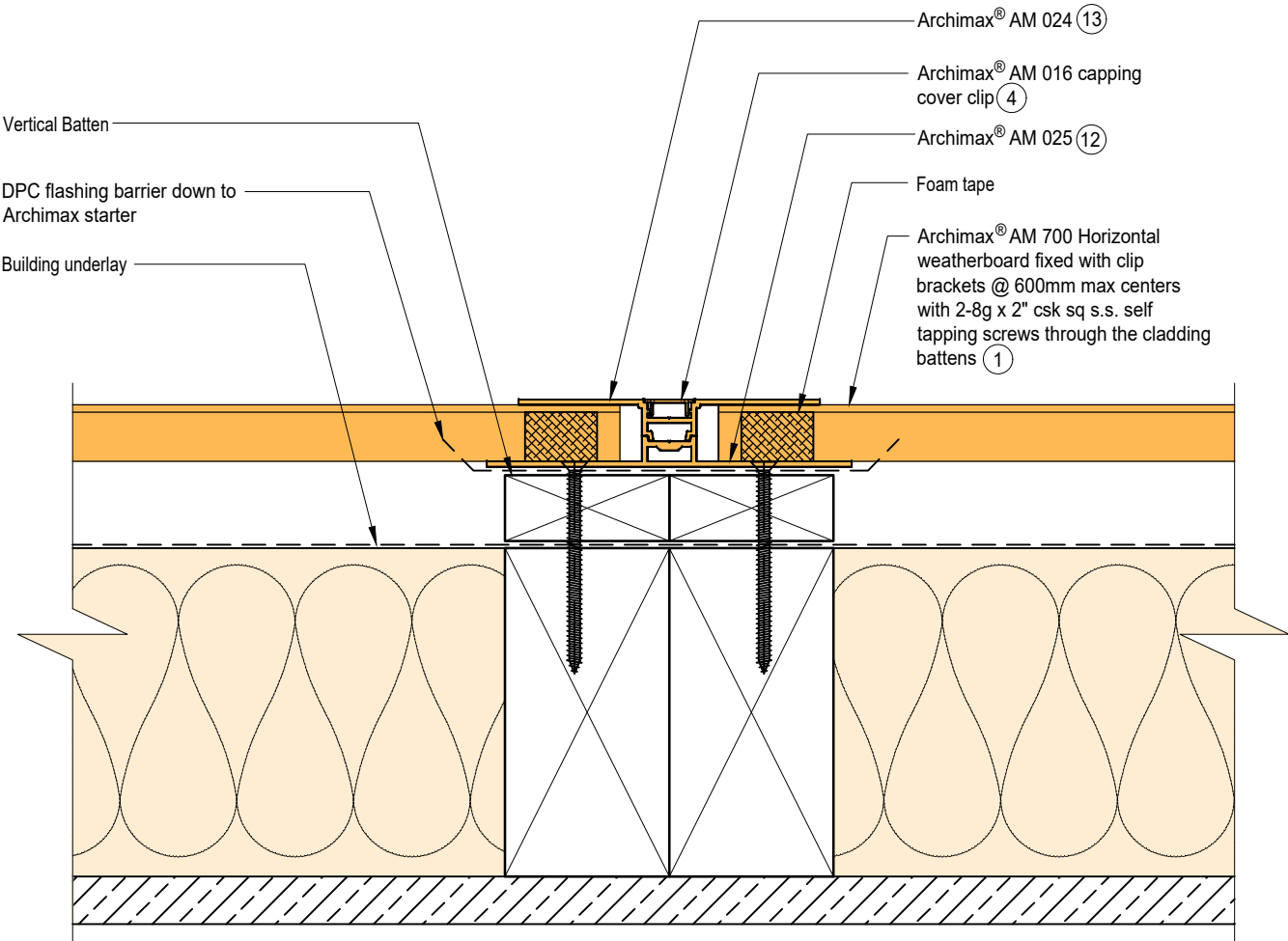
This drawing is the copyright of Archimax Limited. Modification of details for job specification requirements must be approved by Archimax Ltd. The building designer is ultimately responsible to ensure all building work is designed and constructed according to building code requirements, best code of practice industry guidelines. All components must be supplied by Archimax. Archimax reserves the right to alter or upgrade details at any time without prior notice.

Drawing No. Rev.
 AM-MB-H18 D

Scale Date
 1:2 NOV23

Scale Date
 1:2 NOV23

EXTERIOR



INTERIOR



ARCHIMAX
ALUMINIUM CLADDING SYSTEM
Creating more durable building envelopes
www.archimax.co.nz

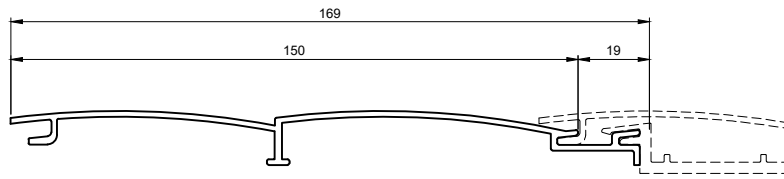
System
AM 700 - HORIZONTAL
WEATHERBOARD

Detail
ARCHIMAX® VERTICAL JOINT DETAIL

Drawing No. Rev.
AM-VJ-H19 D

This drawing is the copyright of Archimax Limited. Modification of details for job specification requirements must be approved by Archimax Ltd. The building designer is ultimately responsible to ensure all building work is designed and constructed according to building code requirements, best code of practice industry guidelines. All components must be supplied by Archimax. Archimax reserves the right to alter or upgrade details at any time without prior notice.

Scale	Date
1:2	NOV23



①

AM 700 Archimax Horizontal / Vertical Weatherboard

<p>②</p>	<p>③</p>	<p>④</p>	<p>⑤</p>	<p>⑥</p>
<p>AM 009</p> <p>Board Starter</p>	<p>AM 018</p> <p>End Capping Part B</p>	<p>AM 016</p> <p>Jointer / Jamb / Sill Capping Cover Clip</p>	<p>AM 017</p> <p>End Capping Part A</p>	<p>AM 029</p> <p>Clip Bracket</p>
<p>⑨</p>	<p>⑧</p>	<p>⑨</p>	<p>⑪</p>	
<p>AM 019</p> <p>Internal/External Corner Part A</p>	<p>AM 023</p> <p>Internal Corner Cover Clip</p>	<p>AM 022</p> <p>Internal Corner Part B</p>	<p>AM 020</p> <p>External Cover Cover Clip</p>	