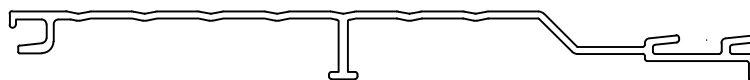


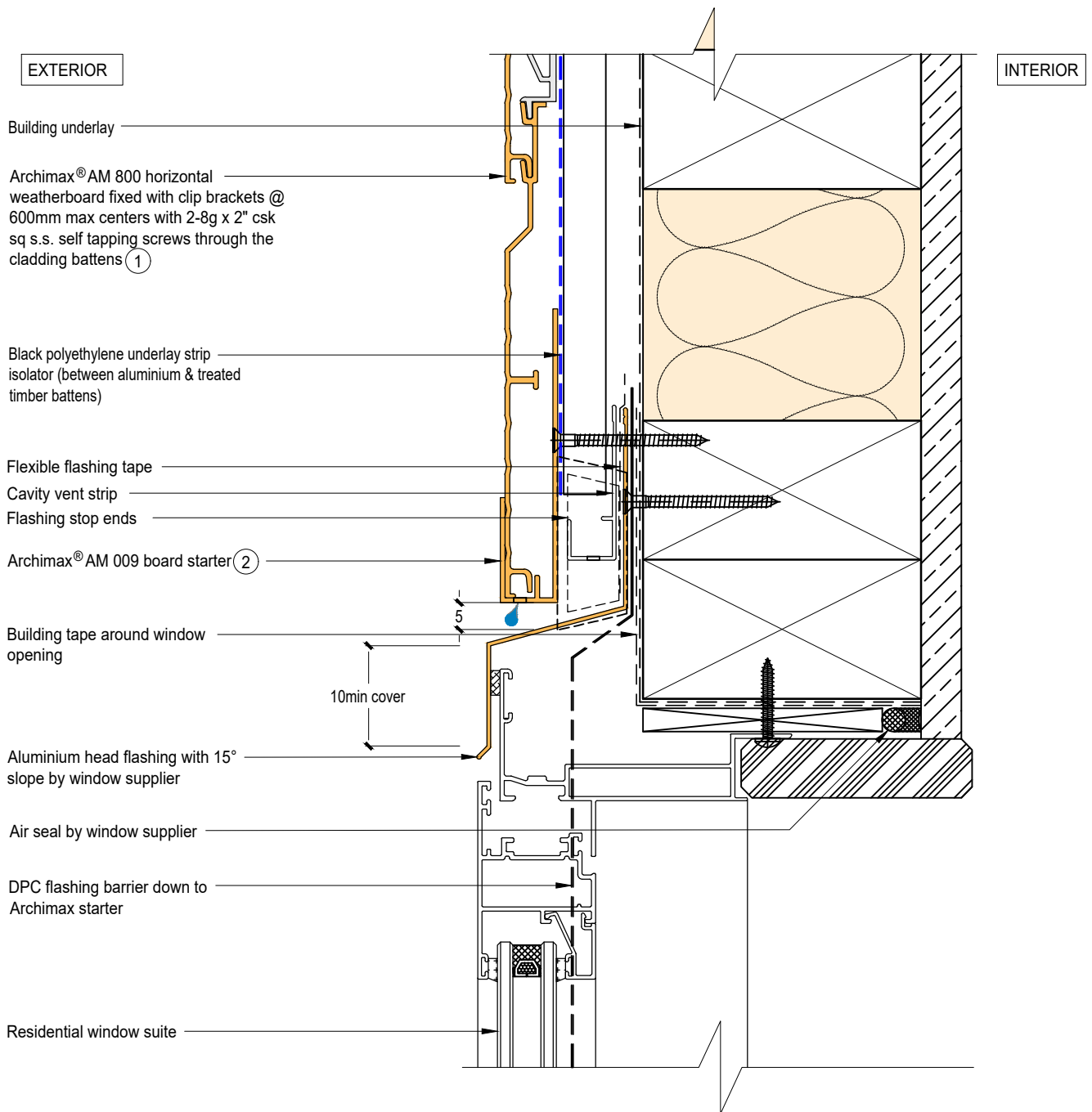


Archimax® Aluminium Cladding System
 AM800 Horizontal Profile - Installation Details

Drawing No.	Rev	Description
AM-WH-H1	D	Archimax® Window Head Detail
AM-WS-H2.1	D	Archimax® Window Sill Detail
AM-WS-H2.2	D	Archimax® Window Sill Detail
AM-WJ-H3	D	Archimax® Window Jamb Detail
AM-EXT-H4	D	Archimax® External Corner Detail
AM-INT-H5	D	Archimax® Internal Corner Detail
AM-CBS-H6.1	D	Archimax® Concrete Floor Board Starter Detail – Timber
AM-CBS-H6.2	D	Archimax® Concrete Floor Board Starter Detail –Fire Wall
AM-HJ-H7	D	Archimax® Horizontal Joint Detail
AM-DJ-H8	D	Archimax® Deck Junction Detail
AM-PP-H9A	D	Archimax® Pipe Penetration Plan View Detail
AM-PP-H9B	D	Archimax® Pipe Penetration Section View Detail
AM-SO-H10	D	Archimax® Soffit Detail
AM-SO-H11.1	D	Archimax® Fascia, Soffit & Wall Detail
AM-SO-H11.2	D	Archimax® Fascia, Soffit & Wall Detail (90° Soffit/Wall)
AM-SO-H11.3	D	Archimax® Fascia, Board Soffit & Wall Detail
AM-SO-H12	D	Archimax® Non-Soffit Detail
AM-BJ-H13	D	Archimax® Internal Corner Junction Detail
AM-PAR-H14	D	Archimax® Parapet with Cavity Detail
AM-RW-H15	D	Archimax® Lower Roof Wall Junction Detail
AM-MB-H16	D	Archimax® Meter Box Head Detail
AM-MB-H17	D	Archimax® Meter Box Sill Detail
AM-MB-H18	D	Archimax® Meter Box Jamb Detail
AM-MB-H19	D	Archimax® Vertical Joint Detail




AM800
 Coverage: 140mm

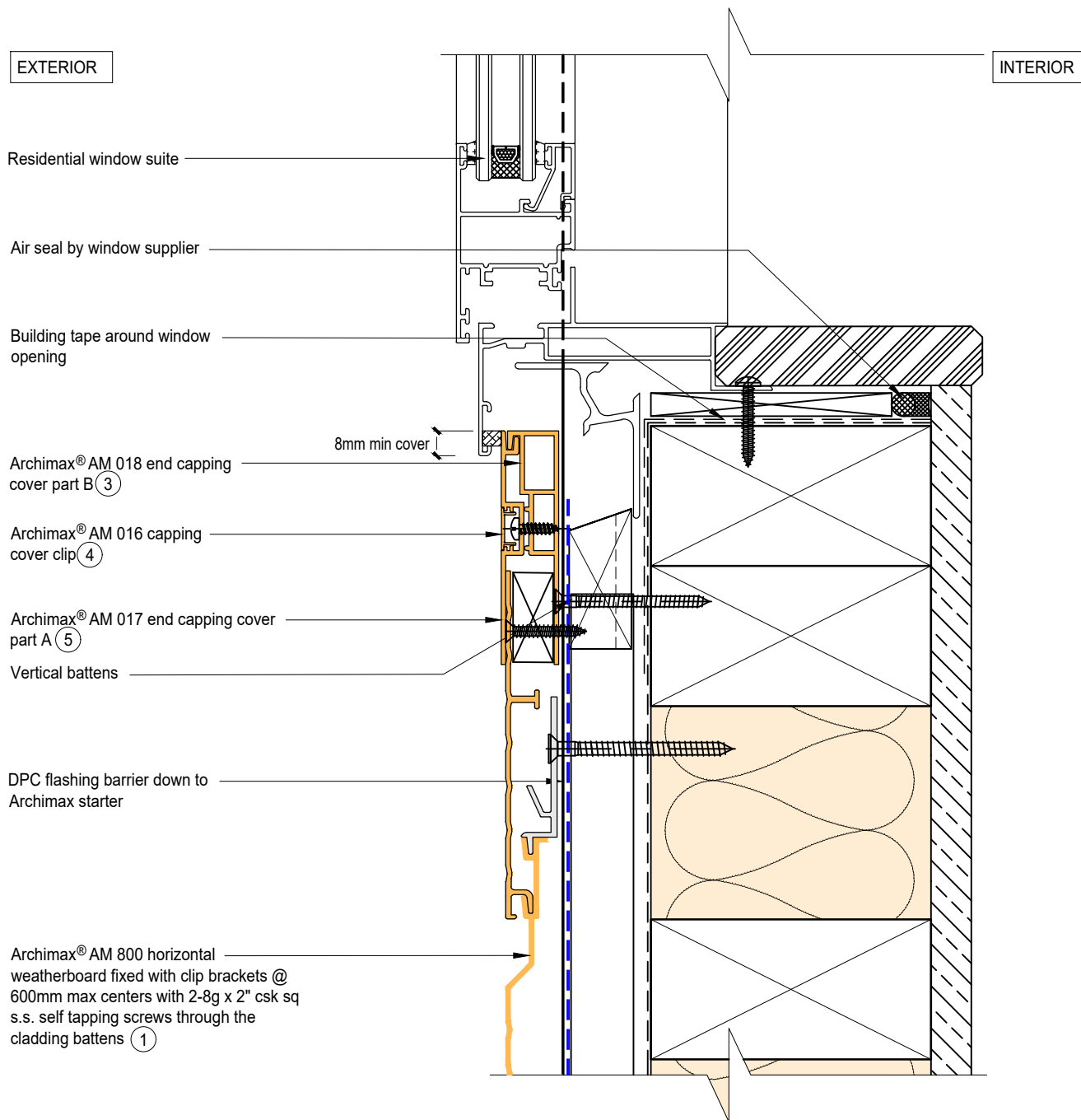


NOTE:

1. Stop ends to be installed at flashing ends
2. Minimum clearance between the AIR BARRIER and WINDOW JOINERY to be 45mm. Window Joinery should not be permanently fixed until cladding installed.




 <p>ARCHIMAX ALUMINIUM CLADDING SYSTEM <i>Creating more durable building envelopes</i> www.archimax.co.nz</p>	<p>System AM 800 - HORIZONTAL WEATHERBOARD</p>	<p>Detail ARCHIMAX® WINDOW HEAD DETAIL</p>	<p>Drawing No. Rev. AM-WH-H1 D</p>
	<p>This drawing is the copyright of Archimax Limited. Modification of details for job specification requirements must be approved by Archimax Ltd. The building designer is ultimately responsible to ensure all building work is designed and constructed according to building code requirements, best code of practice industry guidelines. All components must be supplied by Archimax. Archimax reserves the right to alter or upgrade details at any time without prior notice.</p>		<p>Scale Date 1:2 NOV23</p>

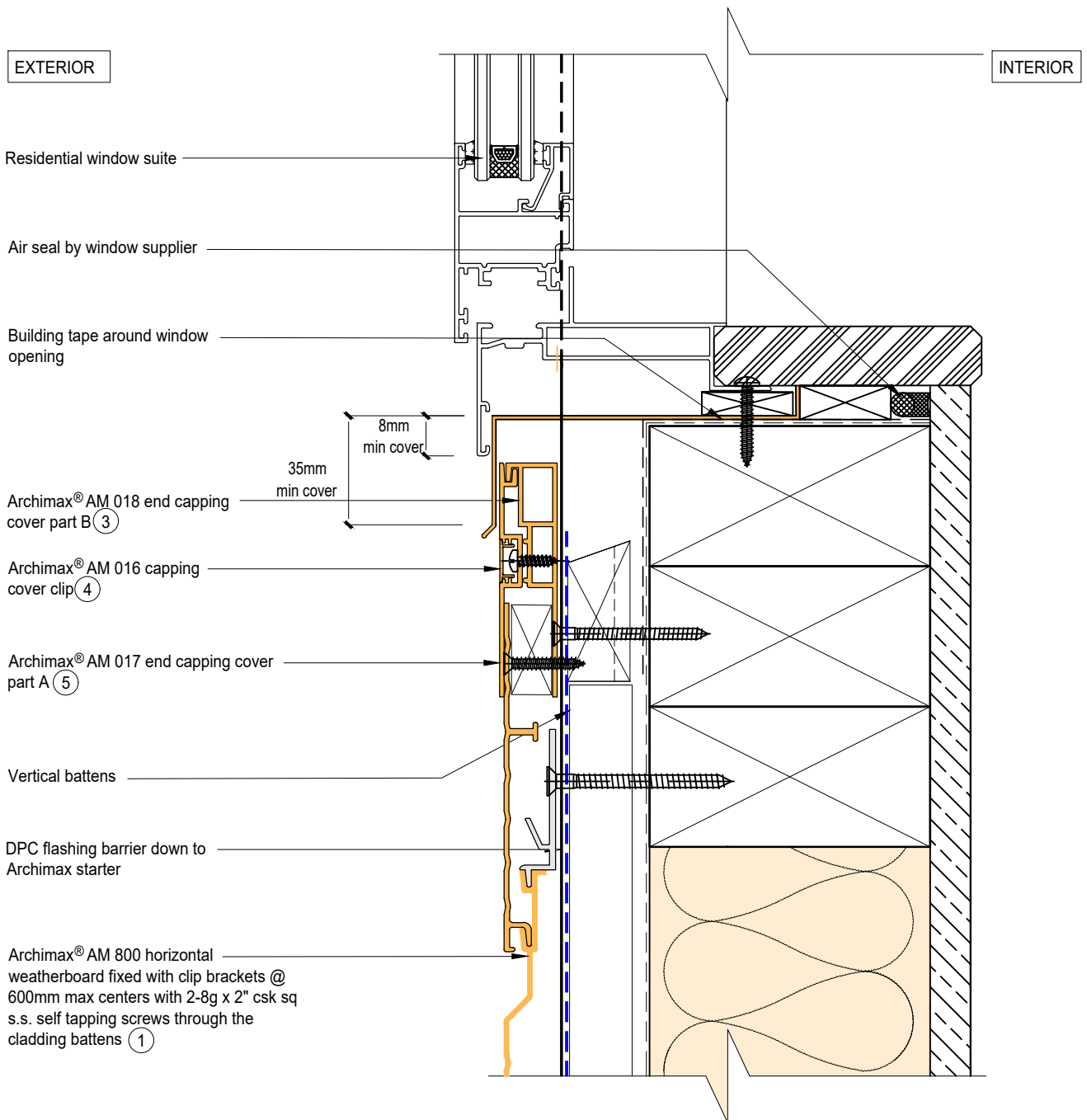


NOTE:

1. Minimum clearance between the AIR BARRIER and WINDOW JOINERY to be 45mm. Window Joinery should not be permanently fixed until cladding installed.




 <p>ARCHIMAX ALUMINIUM CLADDING SYSTEM <i>Creating more durable building envelopes</i> www.archimax.co.nz</p>	<p>System AM 800 - HORIZONTAL WEATHERBOARD</p>	<p>Detail ARCHIMAX® WINDOW SILL DETAIL</p>	<p>Drawing No. Rev. AM-WS-H2.1 D</p>			
	<p>This drawing is the copyright of Archimax Limited. Modification of details for job specification requirements must be approved by Archimax Ltd. The building designer is ultimately responsible to ensure all building work is designed and constructed according to building code requirements, best code of practice industry guidelines. All components must be supplied by Archimax. Archimax reserves the right to alter or upgrade details at any time without prior notice.</p>		<table border="1"> <tr> <td>Scale</td> <td>Date</td> </tr> <tr> <td>1:2</td> <td>NOV23</td> </tr> </table>	Scale	Date	1:2
Scale	Date					
1:2	NOV23					



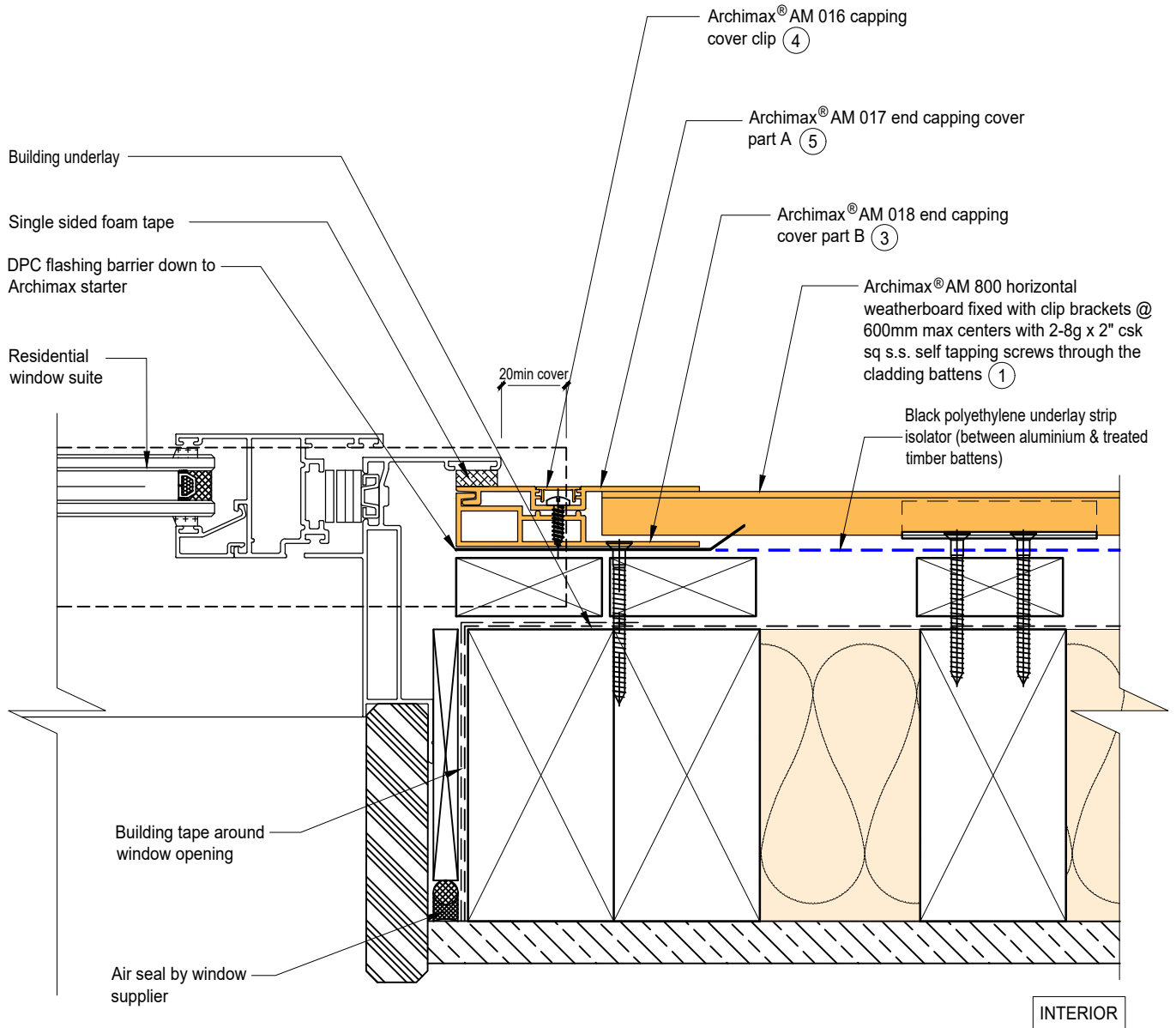
NOTE:

1. Minimum clearance between the AIR BARRIER and WINDOW JOINERY to be 45mm. Window Joinery should not be permanently fixed until cladding installed.



 <p>ARCHIMAX ALUMINIUM CLADDING SYSTEM <i>Creating more durable building envelopes</i> www.archimax.co.nz</p>	<p>System AM 800 - HORIZONTAL WEATHERBOARD</p>	<p>Detail ARCHIMAX® WINDOW SILL DETAIL</p>	<p>Drawing No. Rev. AM-WS-H2.2 D</p>
	<p>This drawing is the copyright of Archimax Limited. Modification of details for job specification requirements must be approved by Archimax Ltd. The building designer is ultimately responsible to ensure all building work is designed and constructed according to building code requirements, best code of practice industry guidelines. All components must be supplied by Archimax. Archimax reserves the right to alter or upgrade details at any time without prior notice.</p>		<p>Scale Date 1:2 NOV23</p>


EXTERIOR



NOTE:

1. Minimum clearance between the AIR BARRIER and WINDOW JOINERY to be 45mm. Window Joinery should not be permanently fixed until cladding installed.



 <p>ARCHIMAX ALUMINIUM CLADDING SYSTEM Creating more durable building envelopes www.archimax.co.nz</p>	<p>System AM 800 - HORIZONTAL WEATHERBOARD</p>	<p>Detail ARCHIMAX® WINDOW JAMB DETAIL</p>	<p>Drawing No. Rev. AM-WJ-H3 D</p>
	<p>This drawing is the copyright of Archimax Limited. Modification of details for job specification requirements must be approved by Archimax Ltd. The building designer is ultimately responsible to ensure all building work is designed and constructed according to building code requirements, best code of practice industry guidelines. All components must be supplied by Archimax. Archimax reserves the right to alter or upgrade details at any time without prior notice.</p>		<p>Scale Date 1:2 NOV23</p>

EXTERIOR

INTERIOR

Building Underlay

Archimax® AM 800 horizontal weatherboard fixed with clip brackets @ 600mm max centers with 2-8g x 2" csk sq s.s. self tapping screws through the cladding battens ①

Black polyethylene underlay strip isolator (between aluminium & treated timber battens)

Vertical battens

Archimax® clip bracket AM 029

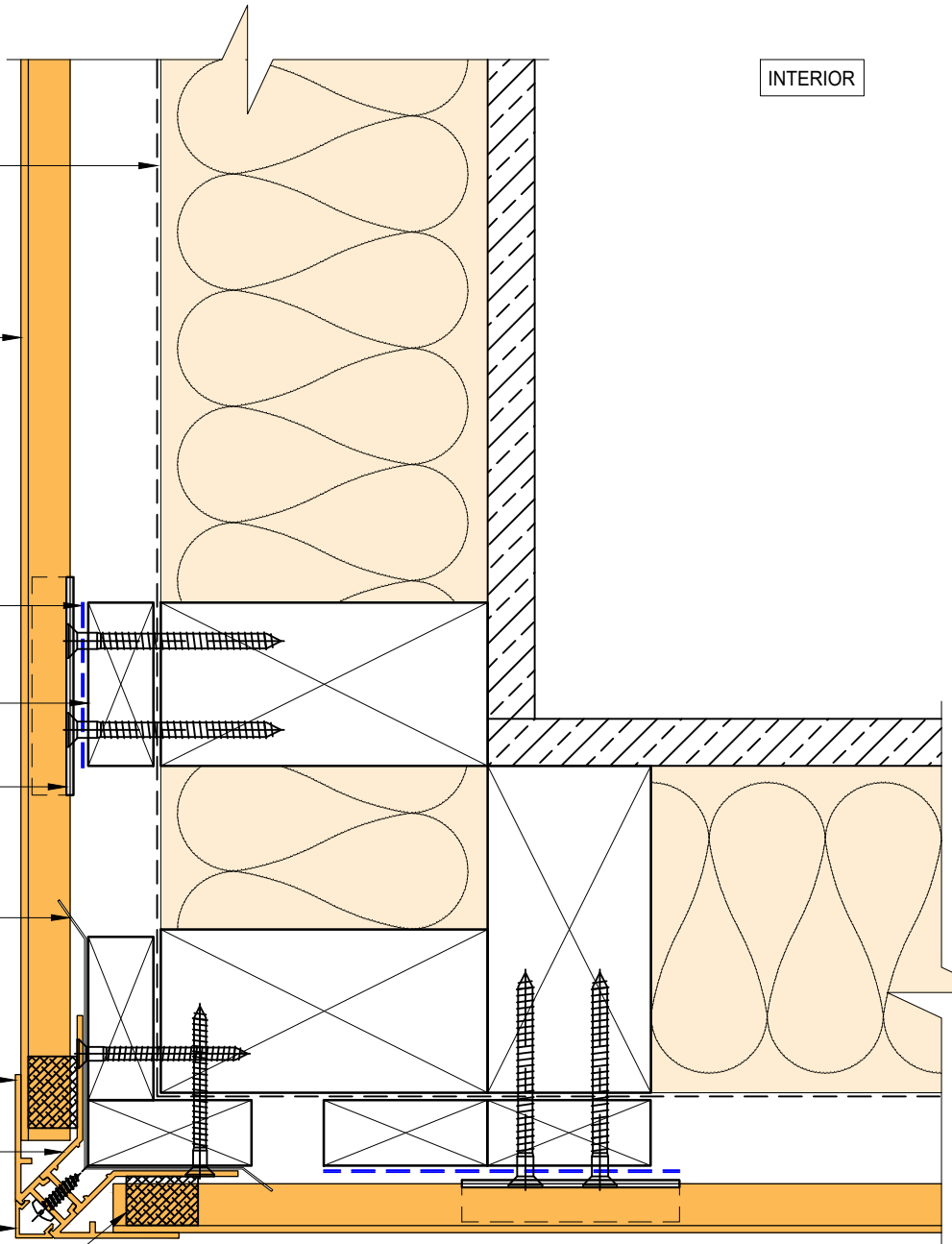
DPC flashing barrier down to Archimax starter

Archimax AM 019 internal/external corner part A ⑦

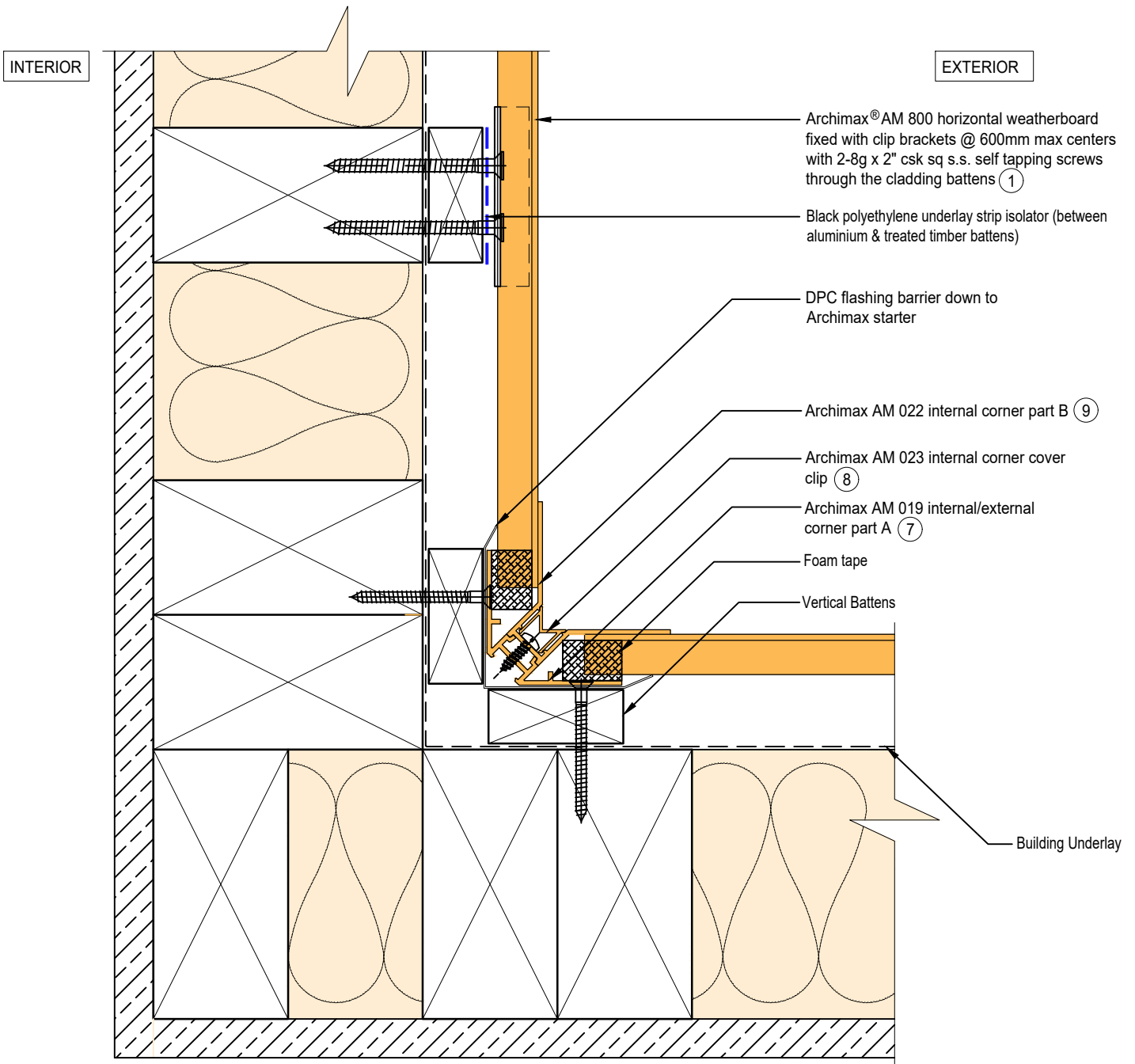
Archimax AM 022 internal corner part B ⑨


Archimax AM 020 external corner cover clip ⑪

Foam Tape



BRANZ Appraised
Appraisal No. 1173 [2021]



 <p>ARCHIMAX ALUMINIUM CLADDING SYSTEM <i>Creating more durable building envelopes</i> www.archimax.co.nz</p>	<p>System AM 800 - HORIZONTAL WEATHERBOARD</p>	<p>Detail ARCHIMAX® INTERNAL CORNER DETAIL</p>	<p>Drawing No. Rev. AM-INT-H5 D</p>
	<p>This drawing is the copyright of Archimax Limited. Modification of details for job specification requirements must be approved by Archimax Ltd. The building designer is ultimately responsible to ensure all building work is designed and constructed according to building code requirements, best code of practice industry guidelines. All components must be supplied by Archimax. Archimax reserves the right to alter or upgrade details at any time without prior notice.</p>		<p>Scale Date 1:2 NOV23</p>

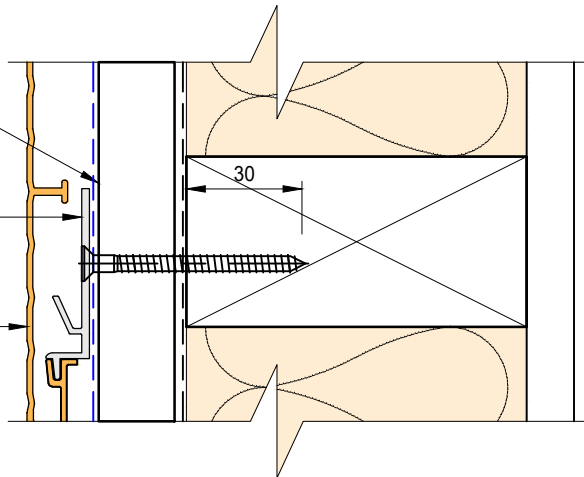
EXTERIOR

INTERIOR

Castellated timber batten (Vertical)

Archimax® clip bracket AM 029

① Archimax® AM800 horizontal weatherboard fixed with clip brackets @ 600mm max centers with 2-8g x 2" csk sq s.s. self tapping screws through the cladding battens



Building underlay

Black polyethylene underlay strip isolator (between aluminium & treated timber battens)

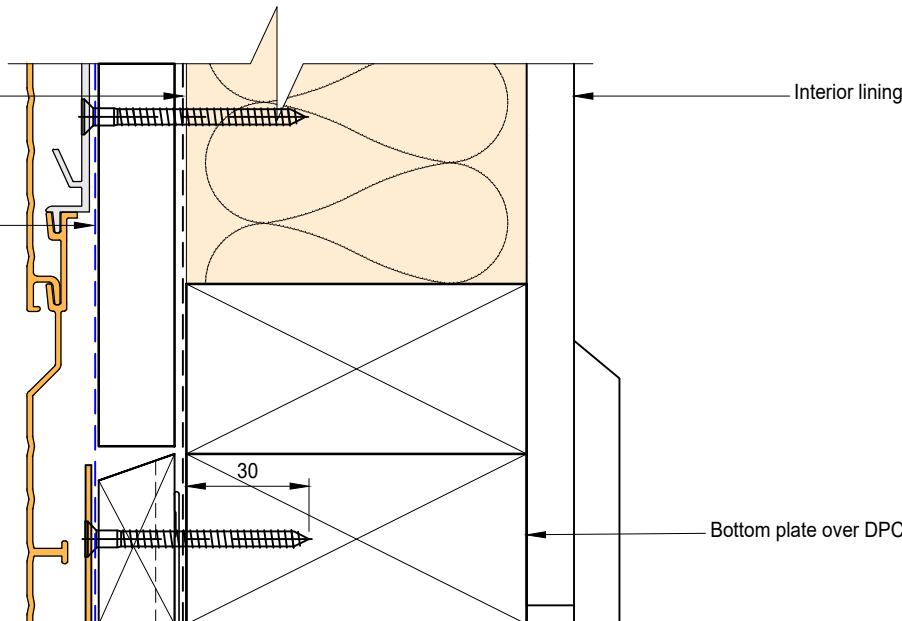
Interior lining

30

Bottom plate over DPC

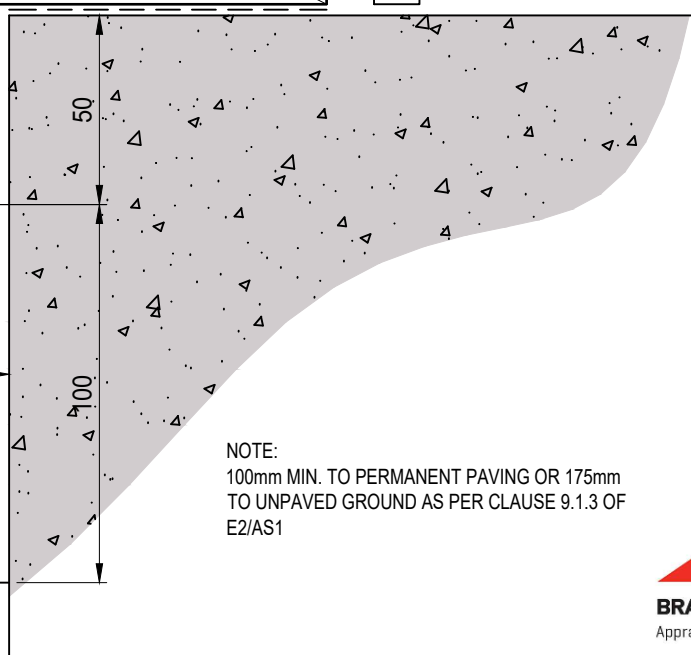
Cavity vent strip (By others)

② Archimax® AM 009 board starter



Concrete slab or brickwork (By others)

Finish ground level



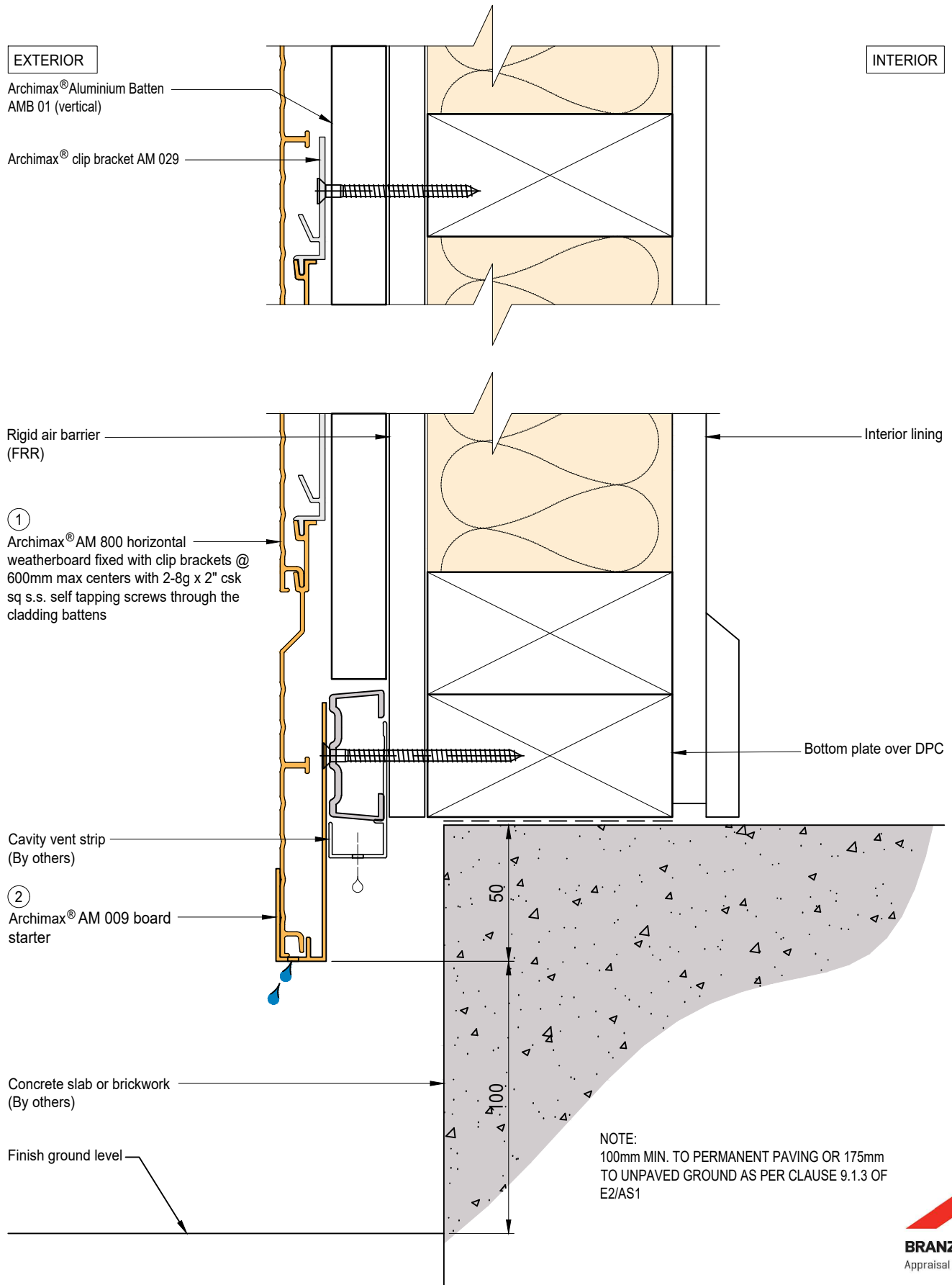
System
AM 800 - HORIZONTAL WEATHERBOARD

Detail
ARCHIMAX® CONCRETE FLOOR BOARD STARTER DETAIL - TIMBER

Drawing No. Rev.
AM-CBS-H6.1 D

This drawing is the copyright of Archimax Limited. Modification of details for job specification requirements must be approved by Archimax Ltd. The building designer is ultimately responsible to ensure all building work is designed and constructed according to building code requirements, best code of practice industry guidelines. All components must be supplied by Archimax. Archimax reserves the right to alter or upgrade details at any time without prior notice.

Scale Date
1:2 NOV23



NOTE:
100mm MIN. TO PERMANENT PAVING OR 175mm
TO UNPAVED GROUND AS PER CLAUSE 9.1.3 OF
E2/AS1



ARCHIMAX
ALUMINIUM CLADDING SYSTEM
Creating more durable building envelopes
www.archimax.co.nz

System
AM 800 - HORIZONTAL
WEATHERBOARD

This drawing is the copyright of Archimax Limited. Modification of details for job specification requirements must be approved by Archimax Ltd. The building designer is ultimately responsible to ensure all building work is designed and constructed according to building code requirements, best code of practice industry guidelines. All components must be supplied by Archimax. Archimax reserves the right to alter or upgrade details at any time without prior notice.

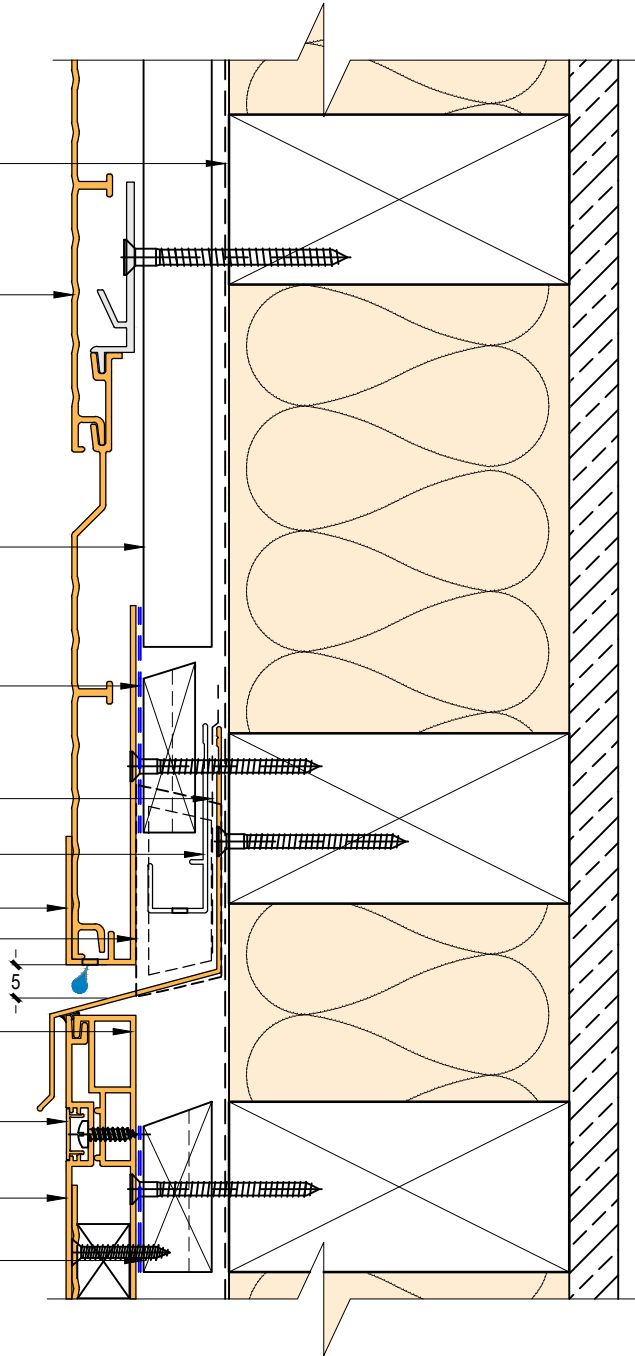
Detail
ARCHIMAX® CONCRETE FLOOR
BOARD STARTER DETAIL-FIRE WALL

Drawing No. Rev. AM-CBS-H6.2 D	
Scale 1:2	Date NOV23

EXTERIOR

INTERIOR

- Building underlay
- Archimax® AM 800 horizontal weatherboard fixed with clip brackets @ 600mm max centers with 2-8g x 2" csk sq s.s. self tapping screws through the cladding battens (1)
- Vertical battens
- Black polyethylene underlay strip isolator (between aluminium & treated timber battens)
- Flexible flashing tape
- Cavity vent strip
- Archimax AM 009 board starter (2)
- Inter-Storey flashing stop ends
- Archimax® AM 018 end capping cover part B (3)
- Archimax® AM 016 capping cover clip (4)
- Archimax® AM 017 end capping cover part A (5)
- Horizontal battens

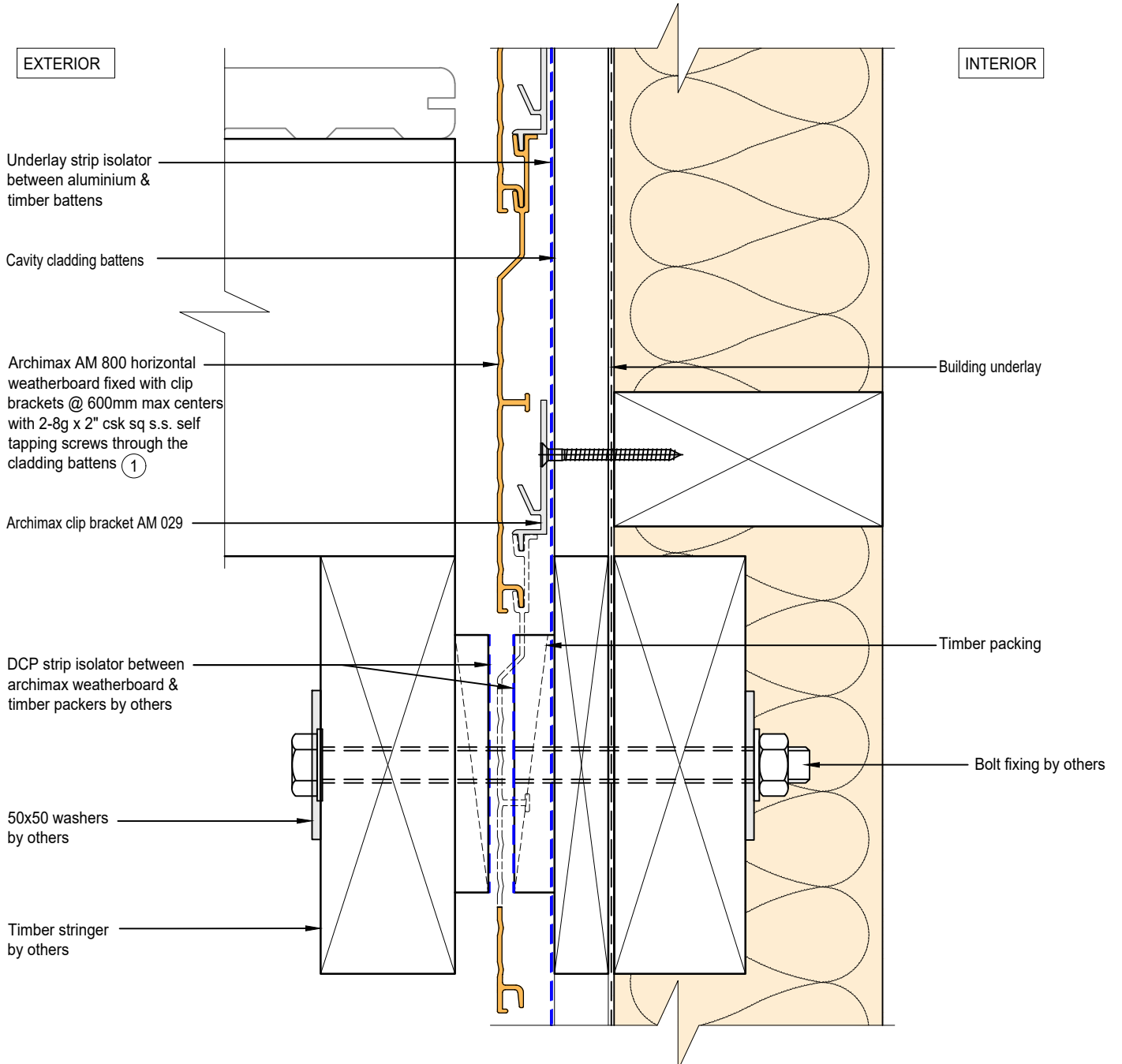


NOTE:
STOP ENDS TO BE INSTALLED AT INTER-STOREY FLASHING ENDS



ARCHIMAX
ALUMINIUM CLADDING SYSTEM
Creating more durable building envelopes
www.archimax.co.nz

System AM 800 - HORIZONTAL WEATHERBOARD	Detail ARCHIMAX® HORIZONTAL JOINT DETAIL	Drawing No. AM-HJ-H7	Rev. D
This drawing is the copyright of Archimax Limited. Modification of details for job specification requirements must be approved by Archimax Ltd. The building designer is ultimately responsible to ensure all building work is designed and constructed according to building code requirements, best code of practice industry guidelines. All components must be supplied by Archimax. Archimax reserves the right to alter or upgrade details at any time without prior notice.		Scale 1:2	Date NOV23




ARCHIMAX
ALUMINIUM CLADDING SYSTEM
Creating more durable building envelopes
www.archimax.co.nz

System
AM 800 - HORIZONTAL WEATHERBOARD

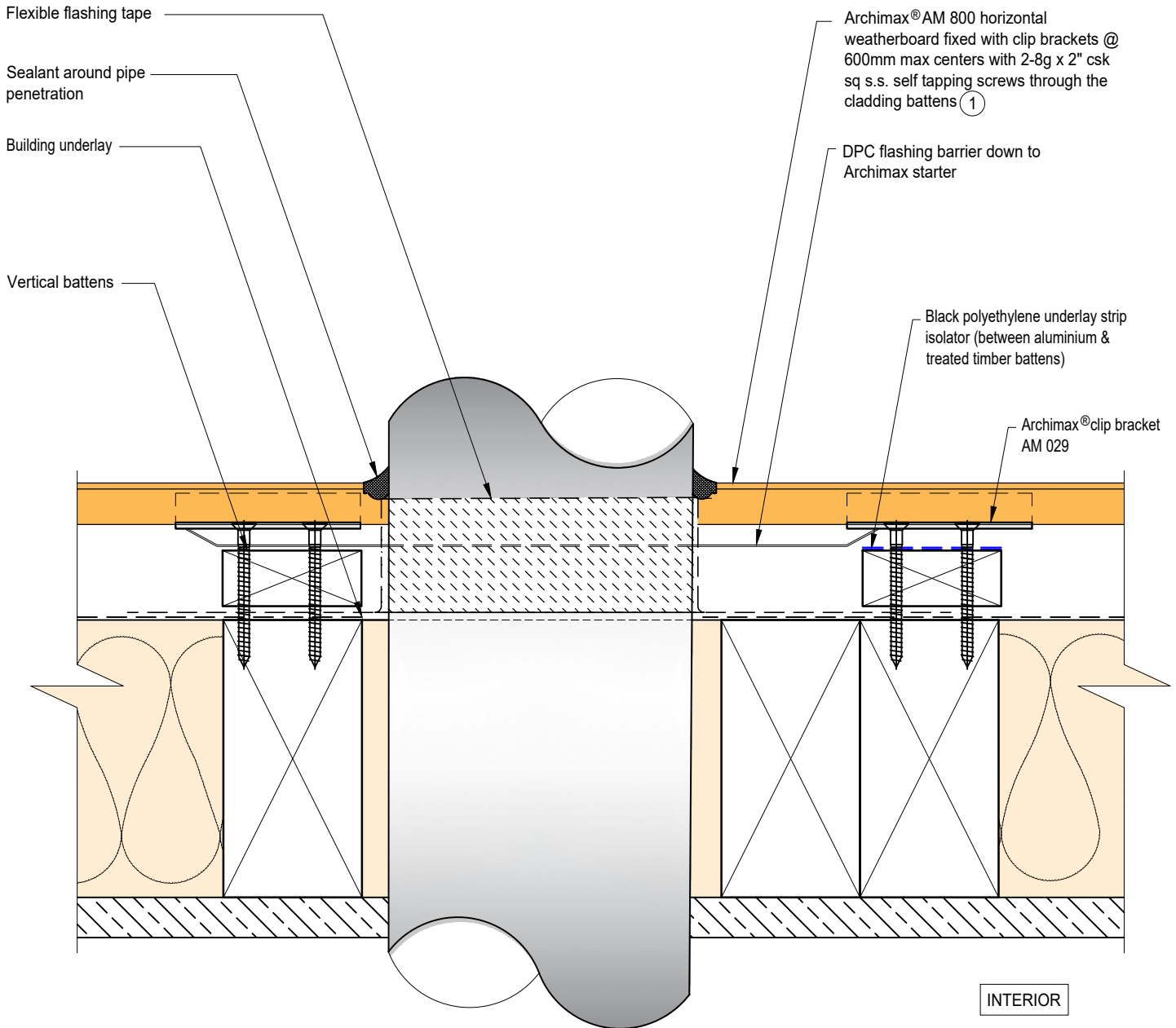
Detail
ARCHIMAX® DECK JUNCTION DETAIL

Drawing No. Rev.
AM-DJ-H8 D

This drawing is the copyright of Archimax Limited. Modification of details for job specification requirements must be approved by Archimax Ltd. The building designer is ultimately responsible to ensure all building work is designed and constructed according to building code requirements, best code of practice industry guidelines. All components must be supplied by Archimax. Archimax reserves the right to alter or upgrade details at any time without prior notice.

Scale Date
1:2 NOV23

EXTERIOR



INTERIOR



BRANZ Appraised
Appraisal No. 1173 [2021]

EXTERIOR

INTERIOR

Archimax® AM 800 horizontal weatherboard fixed with clip brackets @ 600mm max centers with 2-8g x 2" csk sq s.s. self tapping screws through the cladding battens ①

Archimax® clip bracket AM 029

Vertical battens

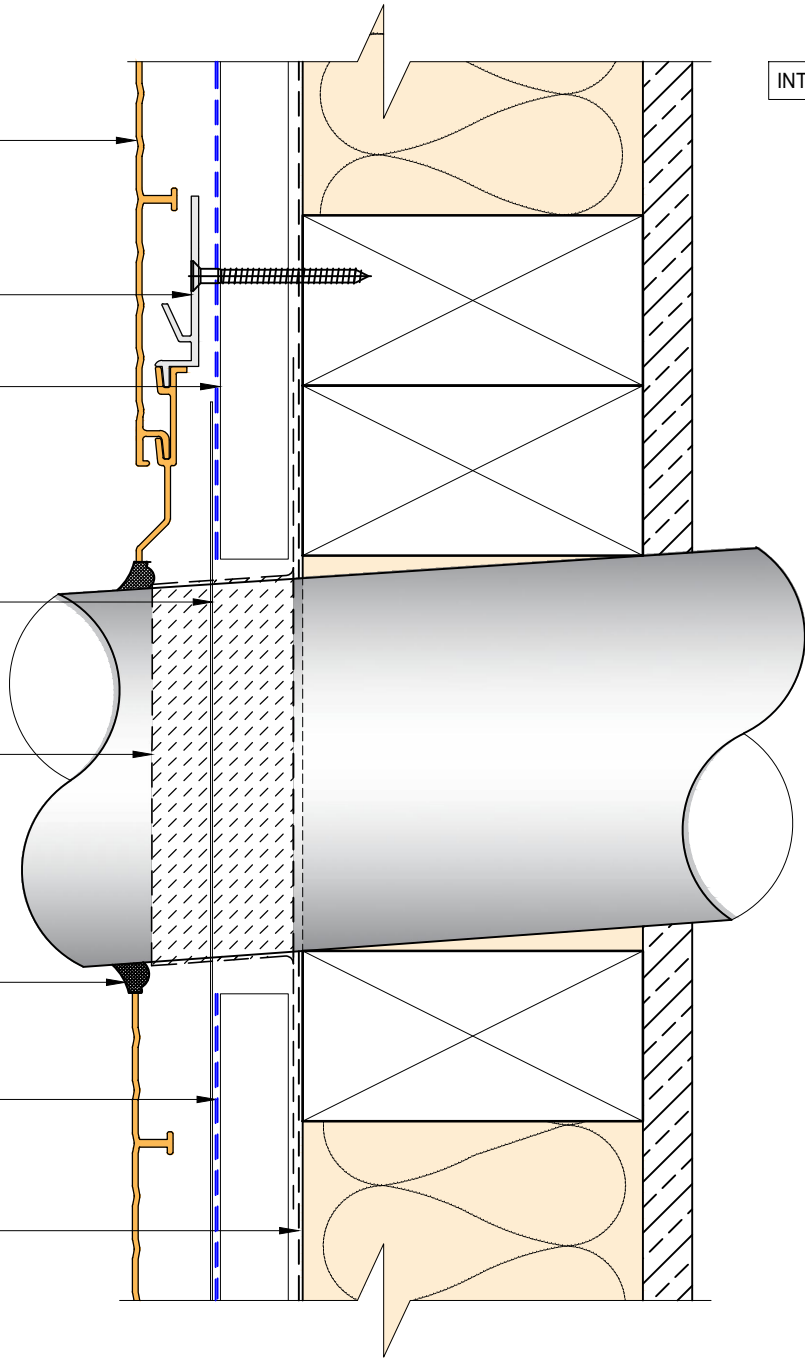
DPC flashing barrier down to Archimax starter

Flexible flashing tape

Sealant around pipe penetration

Black polyethylene underlay strip isolator (between aluminium & treated timber battens)

Building underlay



BRANZ Appraised
Appraisal No. 1173 [2021]



System
AM 800 - HORIZONTAL
WEATHERBOARD

Detail
ARCHIMAX® PIPE PENETRATION -
SECTION VIEW DETAIL

Drawing No. Rev.
AM-PP-H9b D

This drawing is the copyright of Archimax Limited. Modification of details for job specification requirements must be approved by Archimax Ltd. The building designer is ultimately responsible to ensure all building work is designed and constructed according to building code requirements, best code of practice industry guidelines. All components must be supplied by Archimax. Archimax reserves the right to alter or upgrade details at any time without prior notice.

Scale Date
1:2 NOV23

EXTERIOR

INTERIOR

Compressible foam tape

Archimax® AM 018 end capping cover part B (3)

Archimax® AM 016 capping cover clip (4)

Archimax® AM 017 end capping cover part A (5)

Solid packer

Horizontal battens

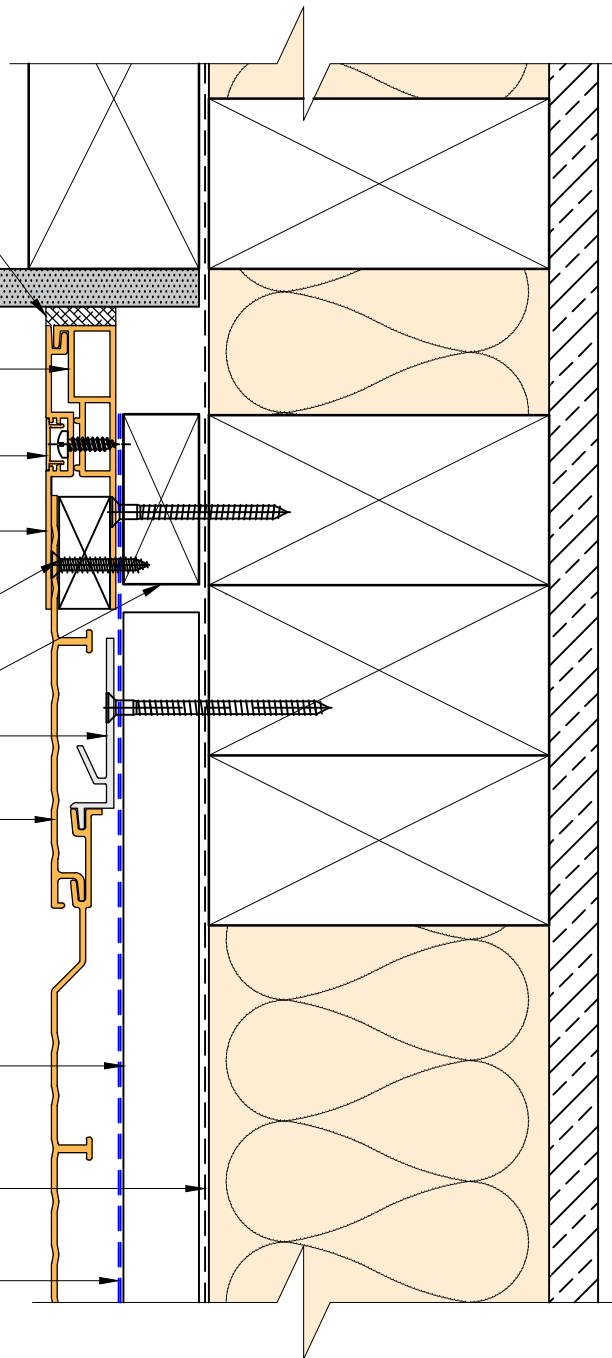
Archimax® clip bracket AM 029

Archimax® AM 800 horizontal weatherboard fixed with clip brackets @ 600mm max centers with 2-8g x 2" csk sq s.s. self tapping screws through the cladding battens (1)

Vertical battens

Building underlay

Black polyethylene underlay strip isolator (between aluminium & treated timber battens)



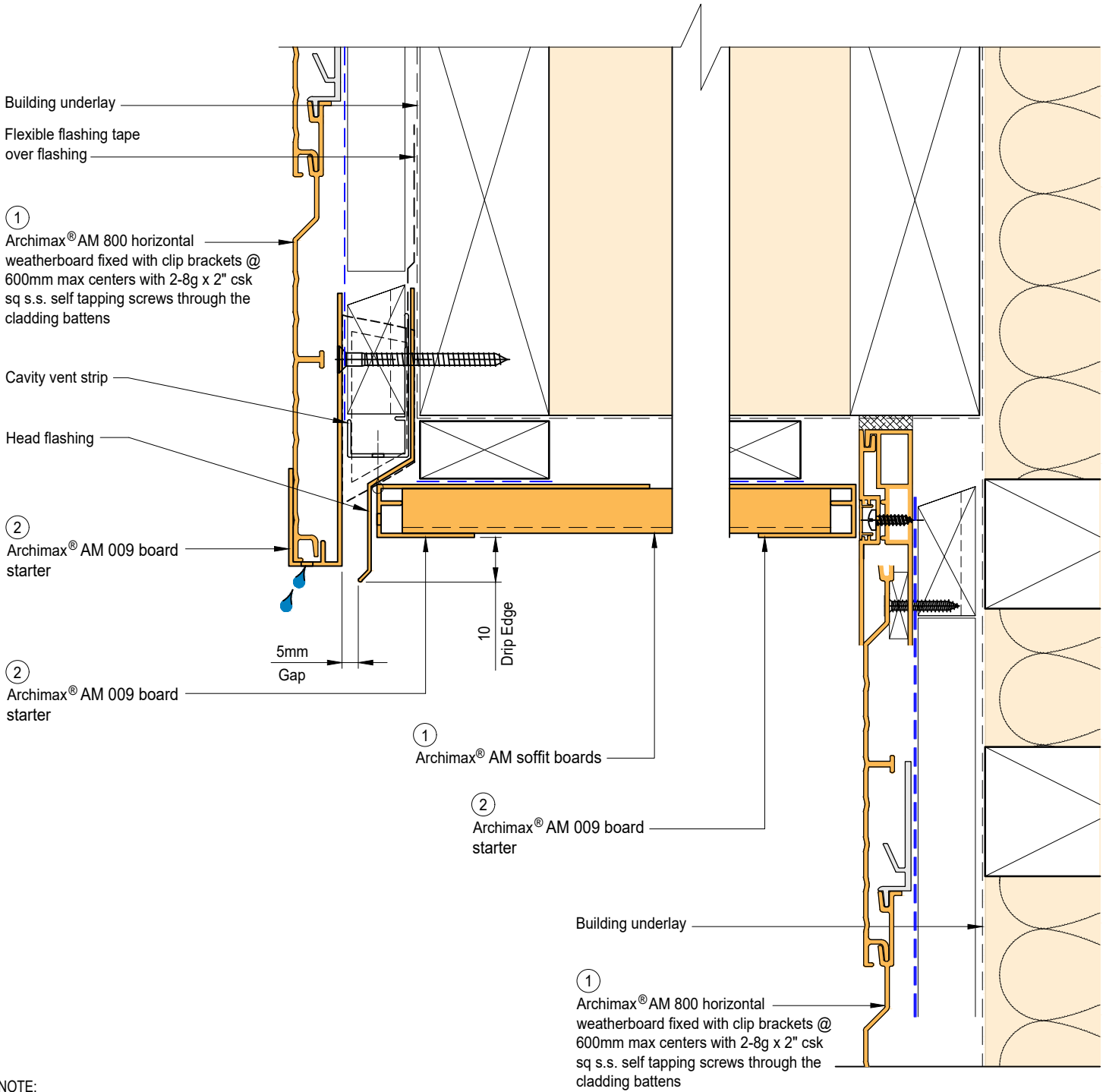
System
AM 800 - HORIZONTAL WEATHERBOARD

Detail
ARCHIMAX® SOFFIT DETAIL

Drawing No. Rev.
AM-SO-H10 D


This drawing is the copyright of Archimax Limited. Modification of details for job specification requirements must be approved by Archimax Ltd. The building designer is ultimately responsible to ensure all building work is designed and constructed according to building code requirements, best code of practice industry guidelines. All components must be supplied by Archimax. Archimax reserves the right to alter or upgrade details at any time without prior notice.

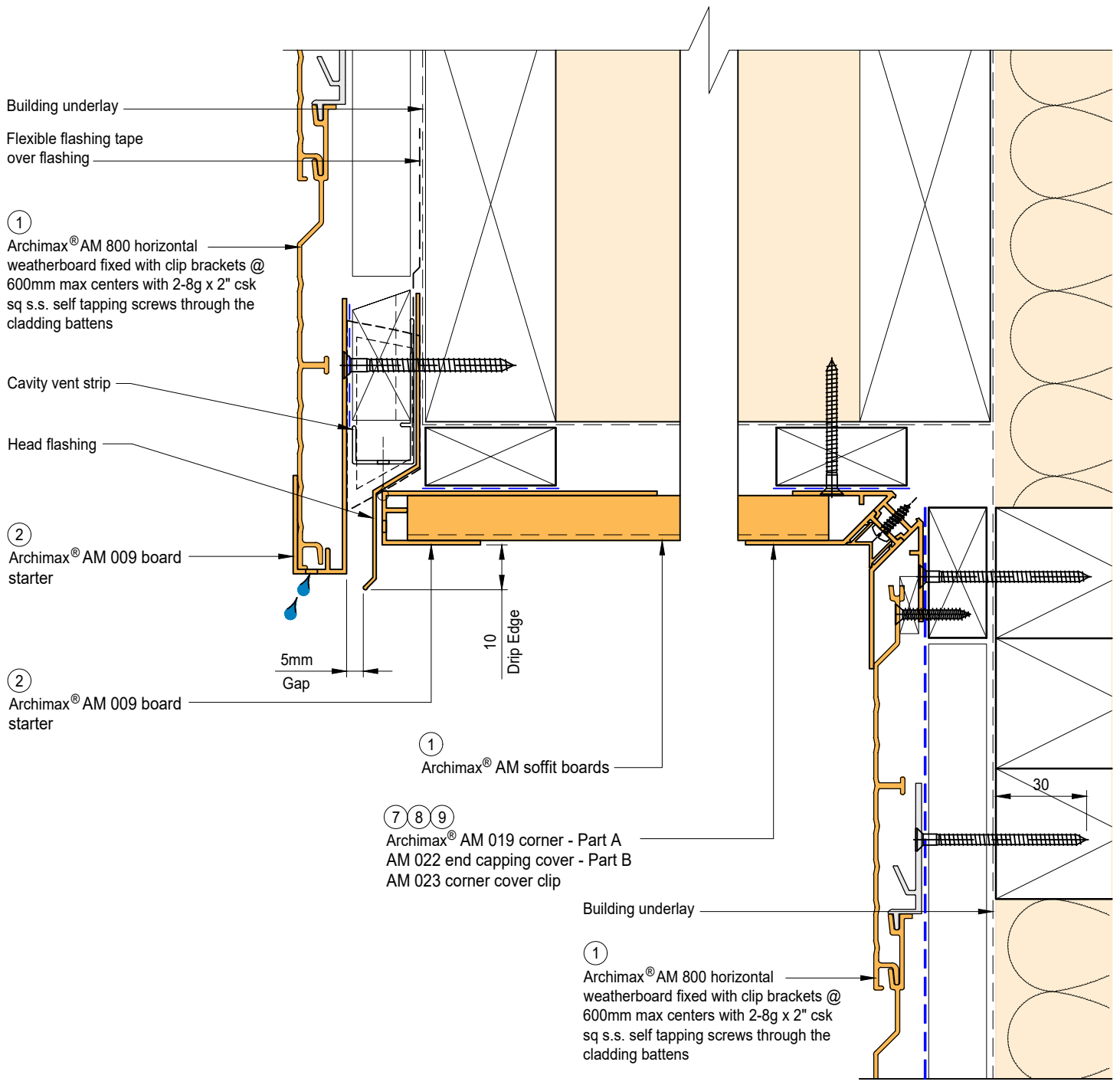
Scale Date
1:2 NOV23



NOTE:
STOP ENDS TO BE INSTALLED AT FLASHING ENDS




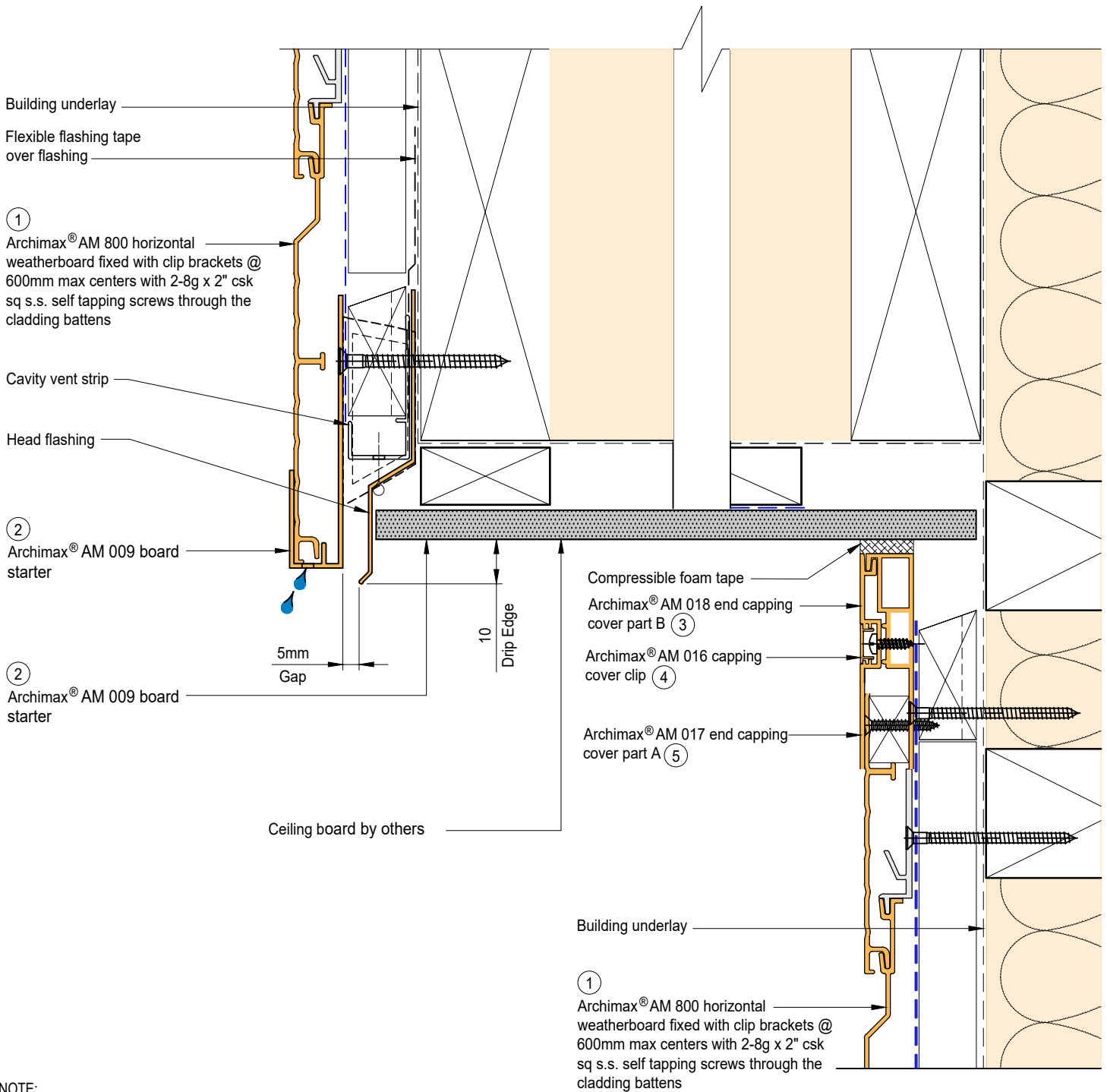
 <p>ARCHIMAX ALUMINIUM CLADDING SYSTEM <i>Creating more durable building envelopes</i> www.archimax.co.nz</p>	<p>System AM 800 - HORIZONTAL WEATHERBOARD</p>	<p>Detail ARCHIMAX® FASCIA, SOFFIT & WALL DETAIL</p>	<p>Drawing No. Rev. AM-SO-H11.1 D</p>	
	<p>This drawing is the copyright of Archimax Limited. Modification of details for job specification requirements must be approved by Archimax Ltd. The building designer is ultimately responsible to ensure all building work is designed and constructed according to building code requirements, best code of practice industry guidelines. All components must be supplied by Archimax. Archimax reserves the right to alter or upgrade details at any time without prior notice.</p>		<p>Scale 1:2</p>	<p>Date NOV23</p>



NOTE:
STOP ENDS TO BE INSTALLED AT FLASHING ENDS




 <p>ARCHIMAX ALUMINIUM CLADDING SYSTEM <i>Creating more durable building envelopes</i> www.archimax.co.nz</p>	<p>System AM 800 - HORIZONTAL WEATHERBOARD</p>	<p>Detail ARCHIMAX® FASCIA, SOFFIT & WALL DETAIL (90° SOFFIT / WALL) DETAIL</p>	<p>Drawing No. Rev. AM-SO-H11.2 D</p>
	<p>This drawing is the copyright of Archimax Limited. Modification of details for job specification requirements must be approved by Archimax Ltd. The building designer is ultimately responsible to ensure all building work is designed and constructed according to building code requirements, best code of practice industry guidelines. All components must be supplied by Archimax. Archimax reserves the right to alter or upgrade details at any time without prior notice.</p>		<p>Scale Date 1:2 NOV23</p>



NOTE:
STOP ENDS TO BE INSTALLED AT FLASHING ENDS



 <p>ARCHIMAX ALUMINIUM CLADDING SYSTEM <i>Creating more durable building envelopes</i> www.archimax.co.nz</p>	<p>System AM 800 - HORIZONTAL WEATHERBOARD</p>	<p>Detail ARCHIMAX® FASCIA, BOARD SOFFIT & WALL DETAIL</p>	<p>Drawing No. Rev. AM-SO-H11.3 D</p>
	<p>This drawing is the copyright of Archimax Limited. Modification of details for job specification requirements must be approved by Archimax Ltd. The building designer is ultimately responsible to ensure all building work is designed and constructed according to building code requirements, best code of practice industry guidelines. All components must be supplied by Archimax. Archimax reserves the right to alter or upgrade details at any time without prior notice.</p>		<p>Scale Date 1:2 NOV23</p>

EXTERIOR

Selected roofing

Flashing & sealed by others

Archimax® AM 018 end capping cover part B (3)

Archimax® AM 016 capping cover clip (4)

Archimax® AM 017 end capping cover part A (5)

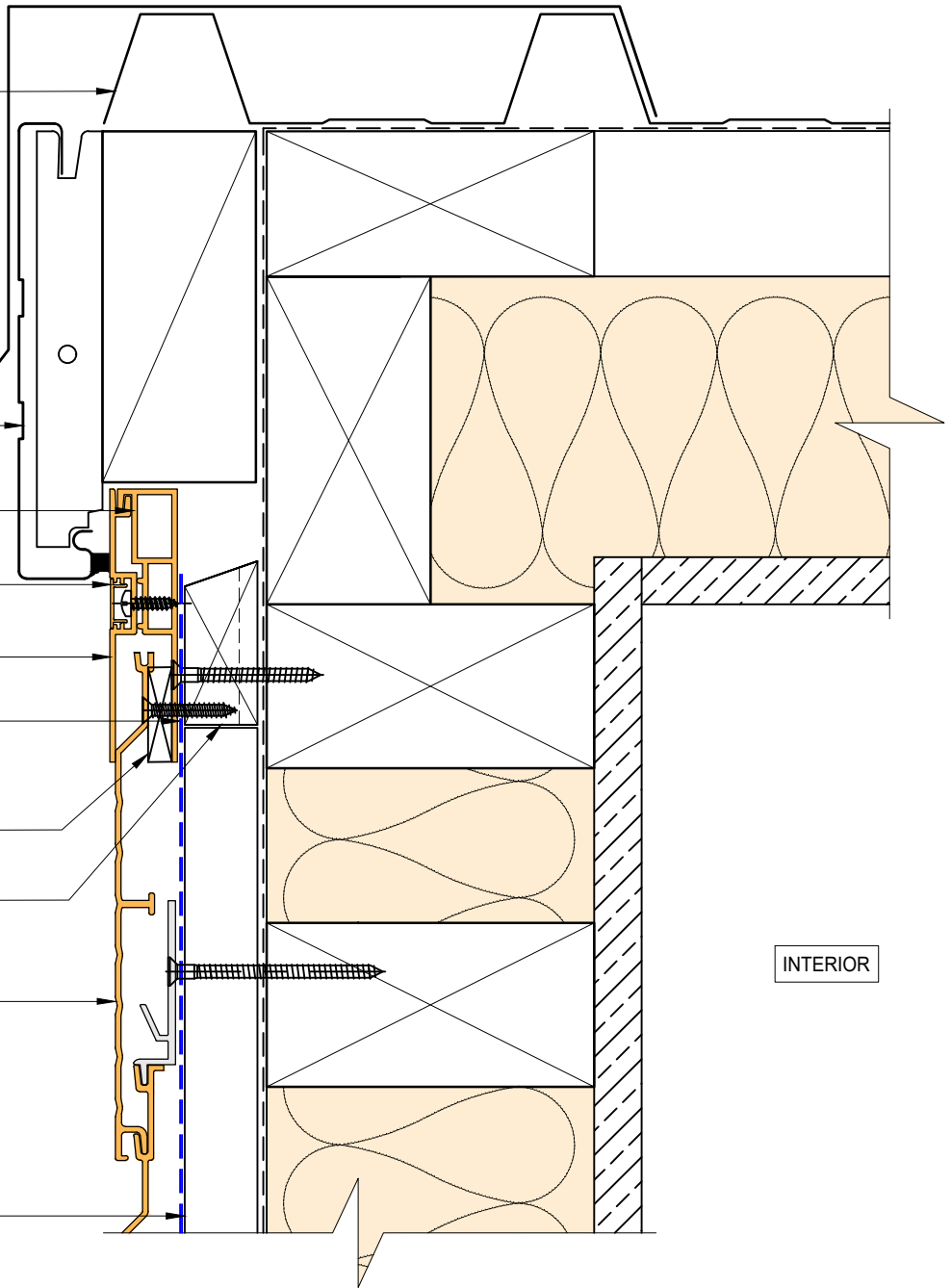
Black polyethylene underlay strip isolator (between aluminium & treated timber battens)

Solid packer

Horizontal battens

Archimax® AM 800 horizontal weatherboard fixed with clip brackets @ 600mm max centers with 2-8g x 2" csk sq s.s. self tapping screws through the cladding battens (1)

Vertical battens



INTERIOR



BRANZ Appraised
Appraisal No. 1173 [2021]



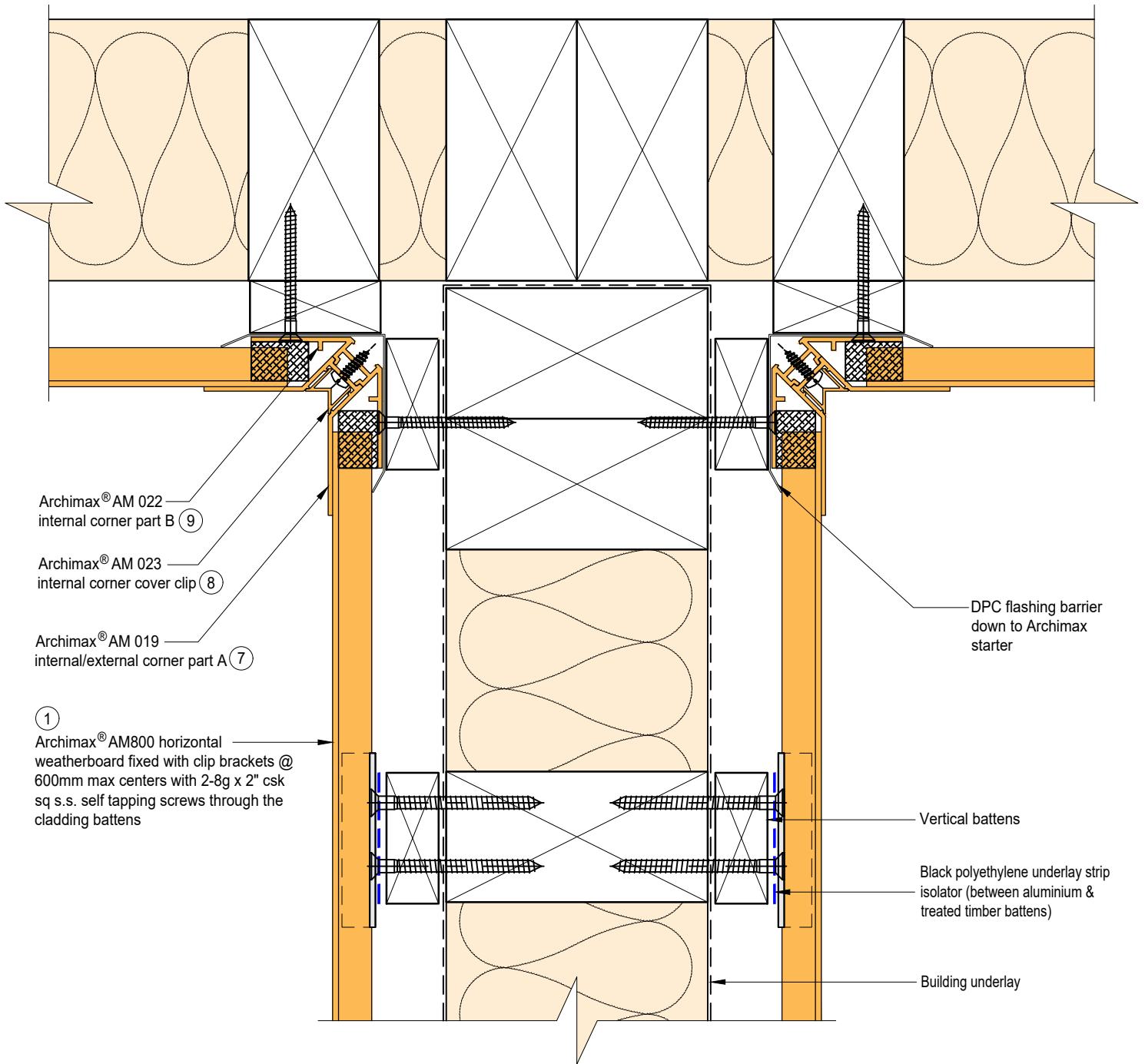
System
AM 800 - HORIZONTAL
WEATHERBOARD

Detail
ARCHIMAX® NON - SOFFIT DETAIL

Drawing No. Rev.
AM-NSO-H12 D

This drawing is the copyright of Archimax Limited. Modification of details for job specification requirements must be approved by Archimax Ltd. The building designer is ultimately responsible to ensure all building work is designed and constructed according to building code requirements, best code of practice industry guidelines. All components must be supplied by Archimax. Archimax reserves the right to alter or upgrade details at any time without prior notice.

Scale Date
1:2 NOV23



Archimax® AM 022
internal corner part B (9)

Archimax® AM 023
internal corner cover clip (8)

Archimax® AM 019
internal/external corner part A (7)

(1)
Archimax® AM800 horizontal
weatherboard fixed with clip brackets @
600mm max centers with 2-8g x 2" csk
sq s.s. self tapping screws through the
cladding battens

DPC flashing barrier
down to Archimax
starter

Vertical battens

Black polyethylene underlay strip
isolator (between aluminium &
treated timber battens)

Building underlay



ARCHIMAX
ALUMINIUM CLADDING SYSTEM
Creating more durable building envelopes
www.archimax.co.nz

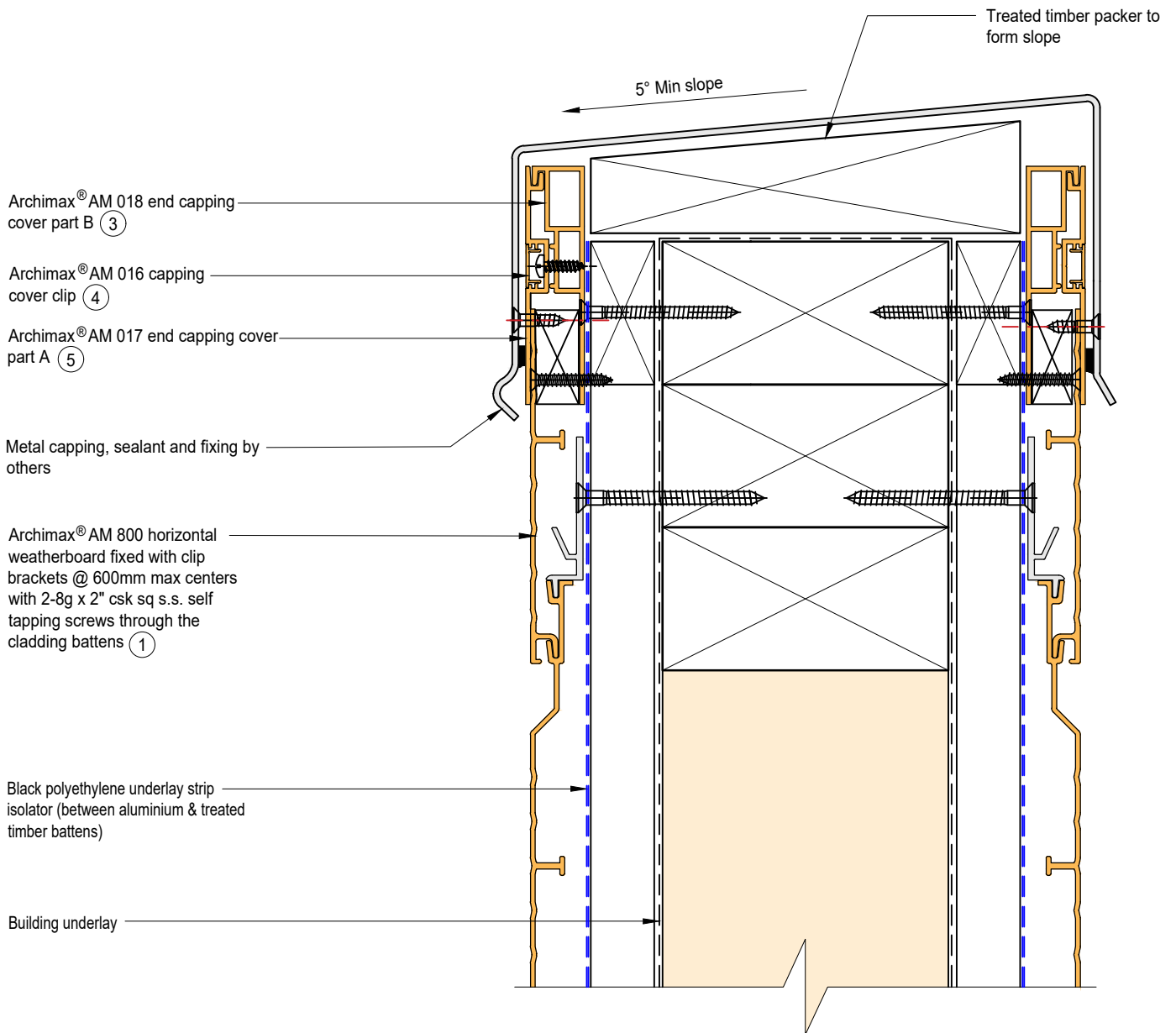
System
AM 800 - HORIZONTAL
WEATHERBOARD


Detail
ARCHIMAX® INTERNAL CORNER
JUNCTION DETAIL

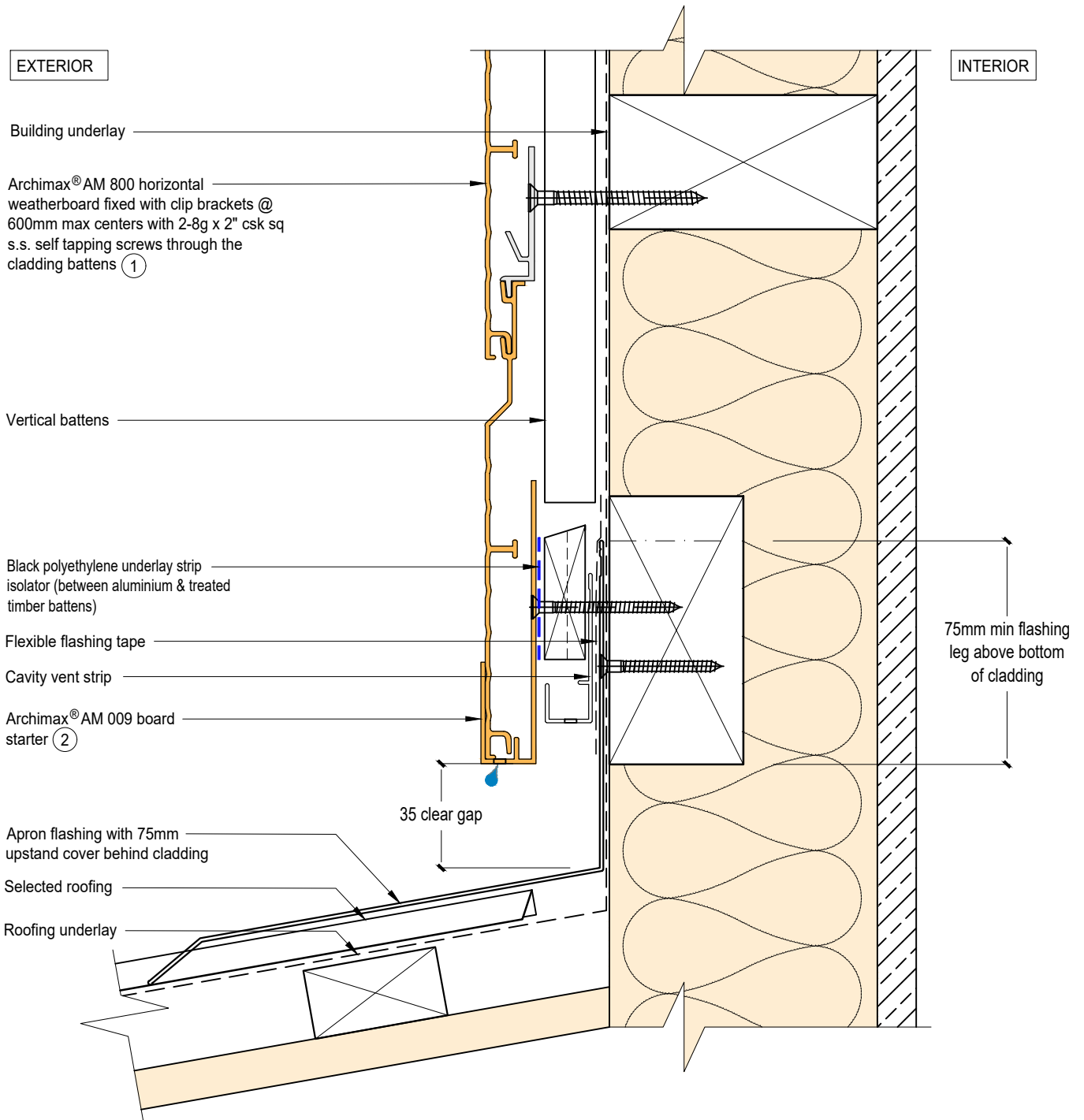
This drawing is the copyright of Archimax Limited. Modification of details for job specification requirements must be approved by Archimax Ltd. The building designer is ultimately responsible to ensure all building work is designed and constructed according to building code requirements, best code of practice industry guidelines. All components must be supplied by Archimax. Archimax reserves the right to alter or upgrade details at any time without prior notice.

Drawing No. Rev.
AM-BJ-H13 D

Scale Date
1:2 NOV23

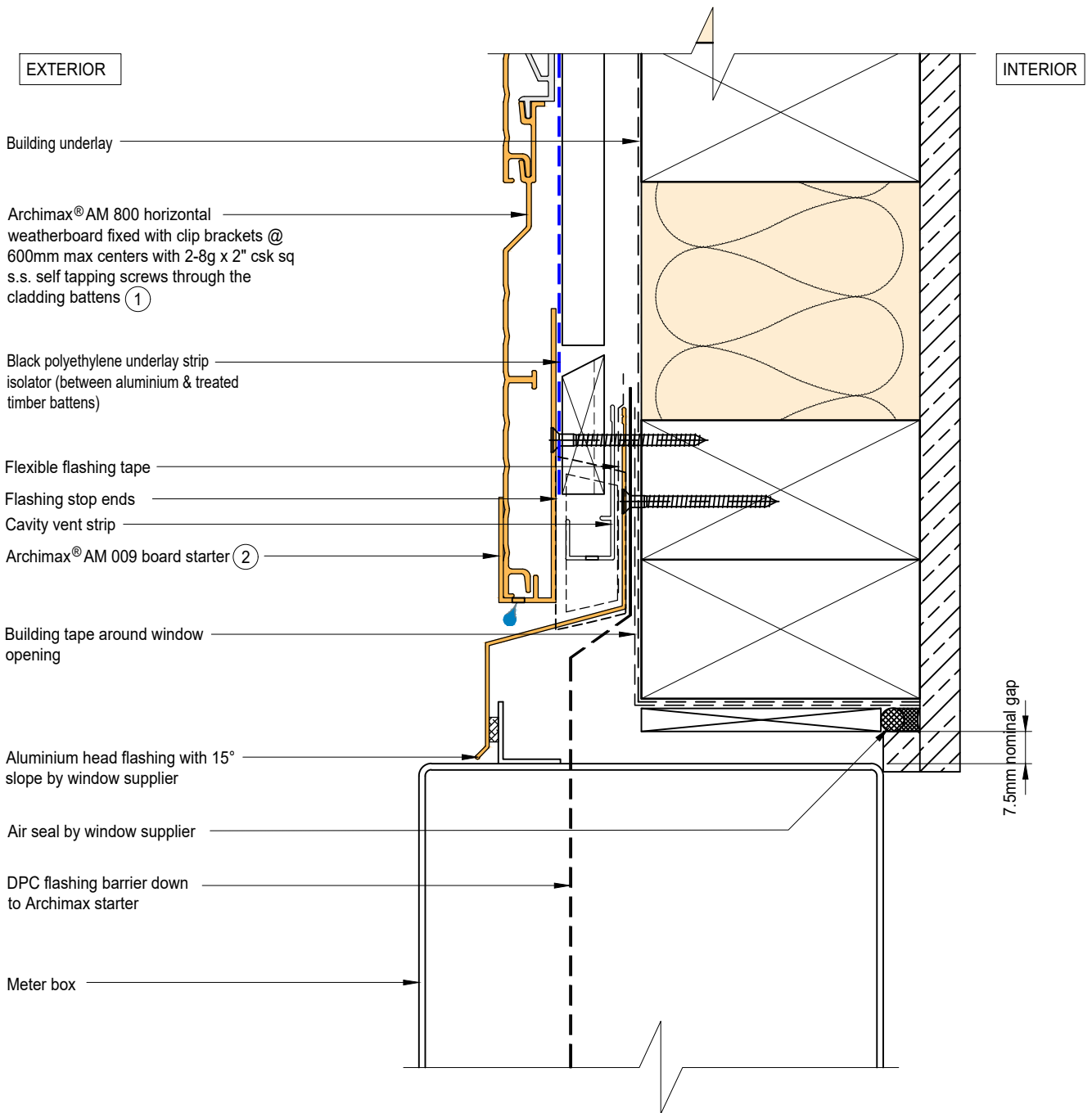


 <p>ARCHIMAX ALUMINIUM CLADDING SYSTEM <i>Creating more durable building envelopes</i> www.archimax.co.nz</p>	<p>System AM 800 - HORIZONTAL WEATHERBOARD</p>	<p>Detail ARCHIMAX® PARAPET WITH CAVITY DETAIL</p>	<p>Drawing No. Rev. AM-PAR-H14 D</p>
	<p>This drawing is the copyright of Archimax Limited. Modification of details for job specification requirements must be approved by Archimax Ltd. The building designer is ultimately responsible to ensure all building work is designed and constructed according to building code requirements, best code of practice industry guidelines. All components must be supplied by Archimax. Archimax reserves the right to alter or upgrade details at any time without prior notice.</p>		<p>Scale Date 1:2 NOV23</p>





ARCHIMAX
 ALUMINIUM CLADDING SYSTEM
Creating more durable building envelopes
 www.archimax.co.nz

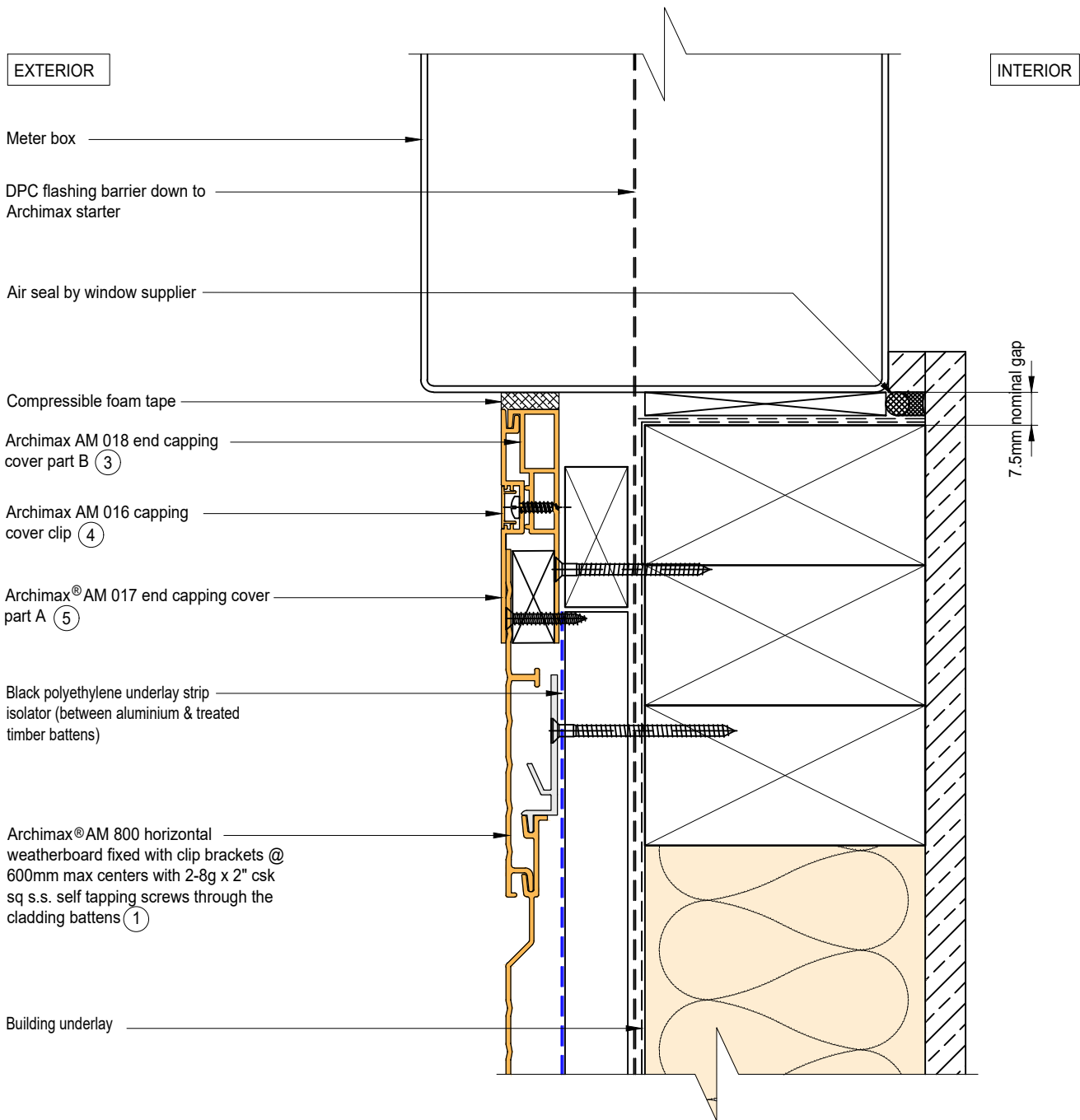
System AM 800 - HORIZONTAL WEATHERBOARD	Detail ARCHIMAX® LOWER ROOF WALL JUNCTION DETAIL	Drawing No. Rev. AM-RW-H15 D
<small>This drawing is the copyright of Archimax Limited. Modification of details for job specification requirements must be approved by Archimax Ltd. The building designer is ultimately responsible to ensure all building work is designed and constructed according to building code requirements, best code of practice industry guidelines. All components must be supplied by Archimax. Archimax reserves the right to alter or upgrade details at any time without prior notice.</small>		Scale 1:2 Date NOV23



NOTE:
STOP ENDS TO BE INSTALLED AT FLASHING ENDS

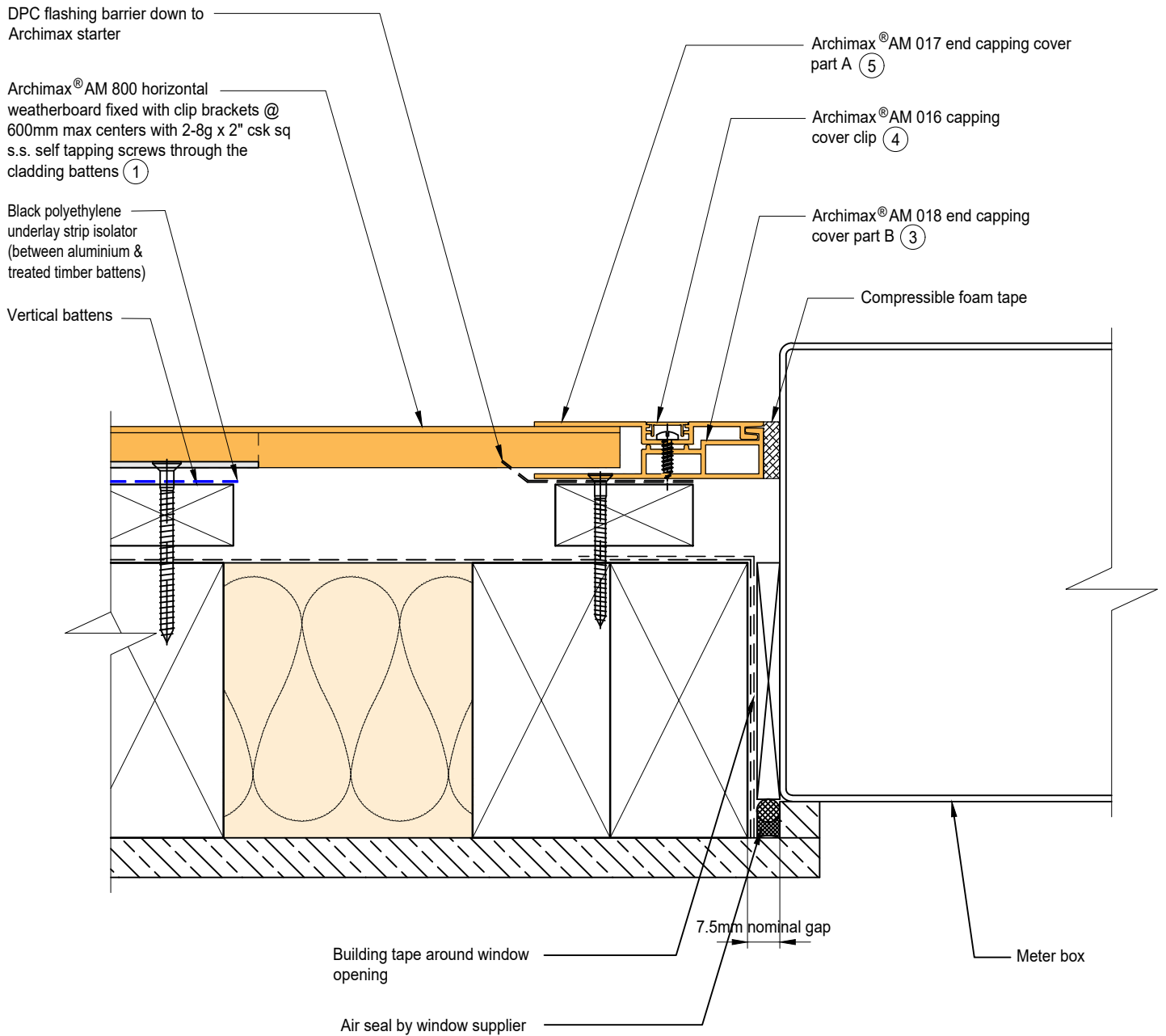



 <p>ARCHIMAX ALUMINIUM CLADDING SYSTEM <i>Creating more durable building envelopes</i> www.archimax.co.nz</p>	System AM 800 - HORIZONTAL WEATHERBOARD	Detail ARCHIMAX® METER BOX HEAD DETAIL	Drawing No. Rev. AM-MB-H16 D
	<small>This drawing is the copyright of Archimax Limited. Modification of details for job specification requirements must be approved by Archimax Ltd. The building designer is ultimately responsible to ensure all building work is designed and constructed according to building code requirements, best code of practice industry guidelines. All components must be supplied by Archimax. Archimax reserves the right to alter or upgrade details at any time without prior notice.</small>		Scale Date 1:2 NOV23



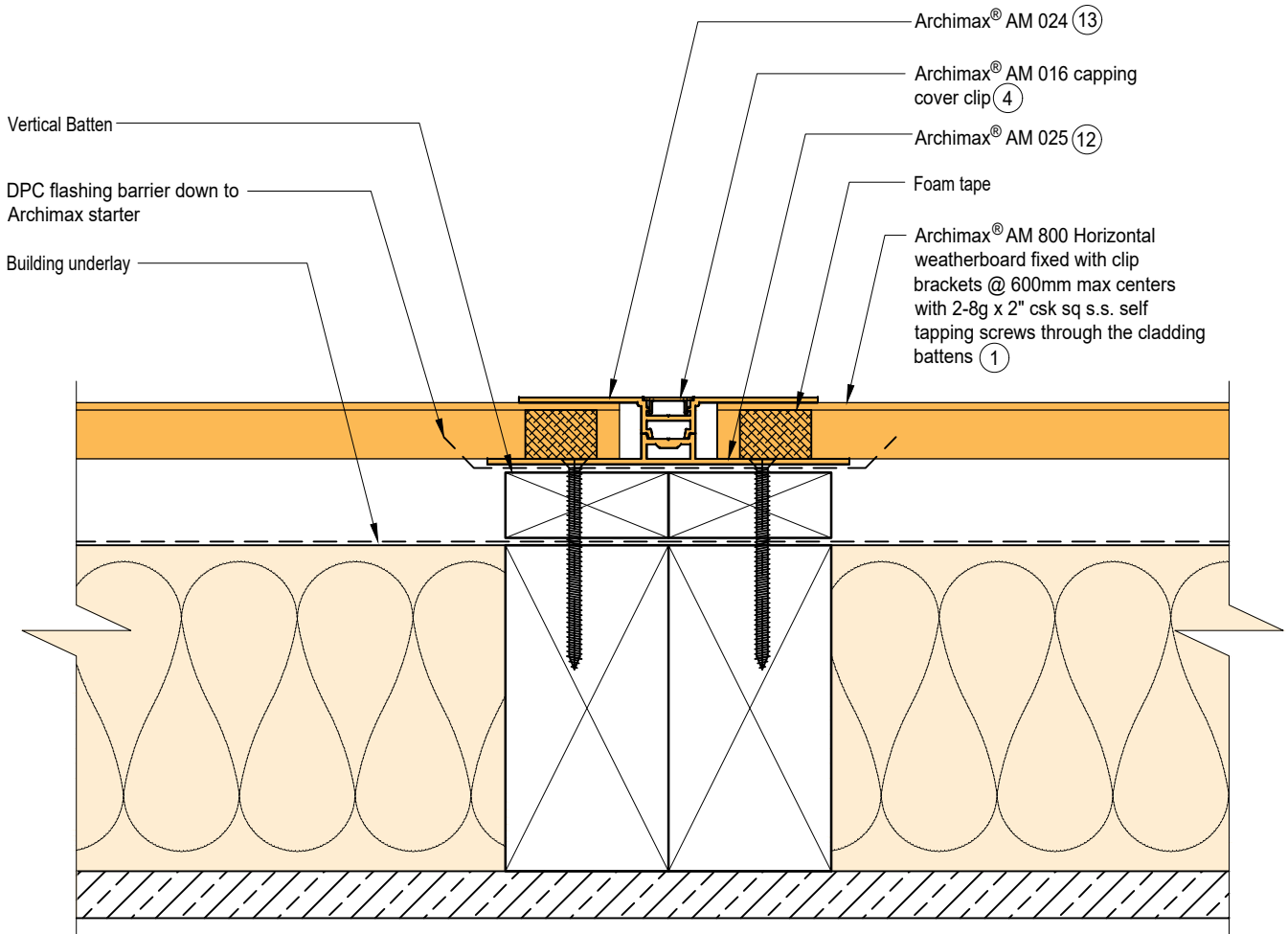
ARCHIMAX
ALUMINIUM CLADDING SYSTEM
Creating more durable building envelopes
www.archimax.co.nz

System AM 800 - HORIZONTAL WEATHERBOARD	Detail ARCHIMAX® METER BOX SILL DETAIL	Drawing No. Rev. AM-MB-H17 D
This drawing is the copyright of Archimax Limited. Modification of details for job specification requirements must be approved by Archimax Ltd. The building designer is ultimately responsible to ensure all building work is designed and constructed according to building code requirements, best code of practice industry guidelines. All components must be supplied by Archimax. Archimax reserves the right to alter or upgrade details at any time without prior notice.		Scale Date 1:2 NOV23




 <p>ARCHIMAX ALUMINIUM CLADDING SYSTEM <i>Creating more durable building envelopes</i> www.archimax.co.nz</p>	<p>System AM 800 - HORIZONTAL WEATHERBOARD</p>	<p>Detail ARCHIMAX® METER BOX JAMB DETAIL</p>	<p>Drawing No. Rev. AM-MB-H18 D</p>
	<p>This drawing is the copyright of Archimax Limited. Modification of details for job specification requirements must be approved by Archimax Ltd. The building designer is ultimately responsible to ensure all building work is designed and constructed according to building code requirements, best code of practice industry guidelines. All components must be supplied by Archimax. Archimax reserves the right to alter or upgrade details at any time without prior notice.</p>		<p>Scale Date 1:2 NOV23</p>

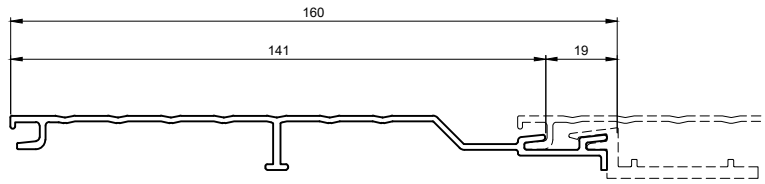
EXTERIOR



INTERIOR



 <p>ARCHIMAX ALUMINIUM CLADDING SYSTEM <i>Creating more durable building envelopes</i> www.archimax.co.nz</p>	<p>System AM 800 - HORIZONTAL WEATHERBOARD</p>	<p>Detail ARCHIMAX® VERTICAL JOINT DETAIL</p>	<p>Drawing No. Rev. AM-VJ-H19 D</p>
	<p>This drawing is the copyright of Archimax Limited. Modification of details for job specification requirements must be approved by Archimax Ltd. The building designer is ultimately responsible to ensure all building work is designed and constructed according to building code requirements, best code of practice industry guidelines. All components must be supplied by Archimax. Archimax reserves the right to alter or upgrade details at any time without prior notice.</p>		<p>Scale Date 1:2 NOV23</p>



①

AM 800 Archimax Horizontal / Vertical Weatherboard

<p>②</p>	<p>③</p>	<p>④</p>	<p>⑤</p>	<p>⑥</p>
<p>AM 009 Board Starter</p>	<p>AM 018 End Capping Part B</p>	<p>AM 016 Jointer / Jamb / Sill Capping Cover Clip</p>	<p>AM 017 End Capping Part A</p>	<p>AM 029 Clip Bracket</p>
<p>⑨</p>	<p>⑧</p>	<p>⑨</p>	<p>⑪</p>	
<p>AM 019 Internal/External Corner Part A</p>	<p>AM 023 Internal Corner Cover Clip</p>	<p>AM 022 Internal Corner Part B</p>	<p>AM 020 External Cover Cover Clip</p>	