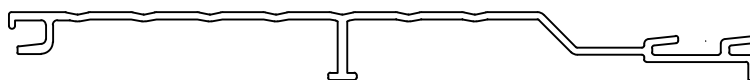


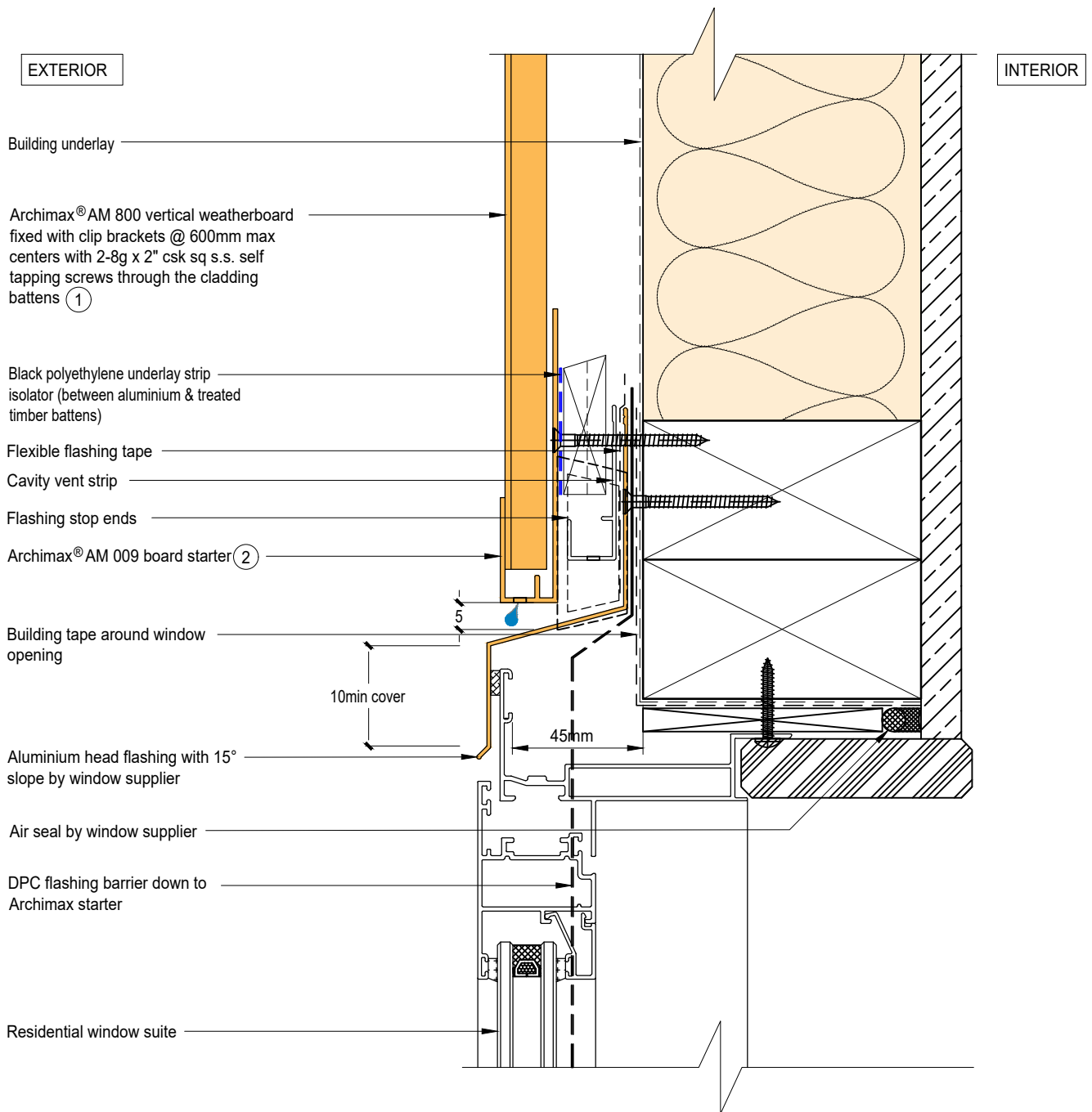


Archimax[®] Aluminium Cladding System
AM800 Vertical Profile - Installation Details

Drawing No.	Rev	Description
AM-WH-V1	D	Archimax [®] Window Head Detail
AM-WS-V2.1	D	Archimax [®] Window Sill Detail
AM-WS-V2.2	D	Archimax [®] Window Sill Detail
AM-WJ-V3	D	Archimax [®] Window Jamb Detail
AM-EXT-V4	D	Archimax [®] External Corner Detail
AM-INT-V5	D	Archimax [®] Internal Corner Detail
AM-CBS-V6.1	D	Archimax [®] Concrete Floor Board Starter Detail - Timber
AM-CBS-V6.2	D	Archimax [®] Concrete Floor Board Starter Detail - Fire Wall
AM-HJ-V7	D	Archimax [®] Horizontal Joint Detail
AM-DJ-V8	D	Archimax [®] Deck Junction Detail
AM-PP-V9A	D	Archimax [®] Pipe Penetration Plan View Detail
AM-PP-V9B	D	Archimax [®] Pipe Penetration Section View Detail
AM-SO-V10	D	Archimax [®] Soffit Detail
AM-SO-V11.1	D	Archimax [®] Fascia, Soffit & Wall Detail
AM-SO-V11.2	D	Archimax [®] Fascia, Soffit & Wall Detail (90° Soffit/Wall)
AM-SO-V11.3	D	Archimax [®] Fascia, Soffit & Wall Detail
AM-SO-V12	D	Archimax [®] Non-Soffit Detail
AM-BJ-V13	D	Archimax [®] Internal Corner Junction Detail
AM-PAR-V14	D	Archimax [®] Parapet with Cavity Detail
AM-RW-V15	D	Archimax [®] Lower Roof Wall Junction Detail
AM-MB-V16	D	Archimax [®] Meter Box Head Detail
AM-MB-V17	D	Archimax [®] Meter Box Sill Detail
AM-MB-V18	D	Archimax [®] Meter Box Jamb Detail




AM800
Coverage: 140mm

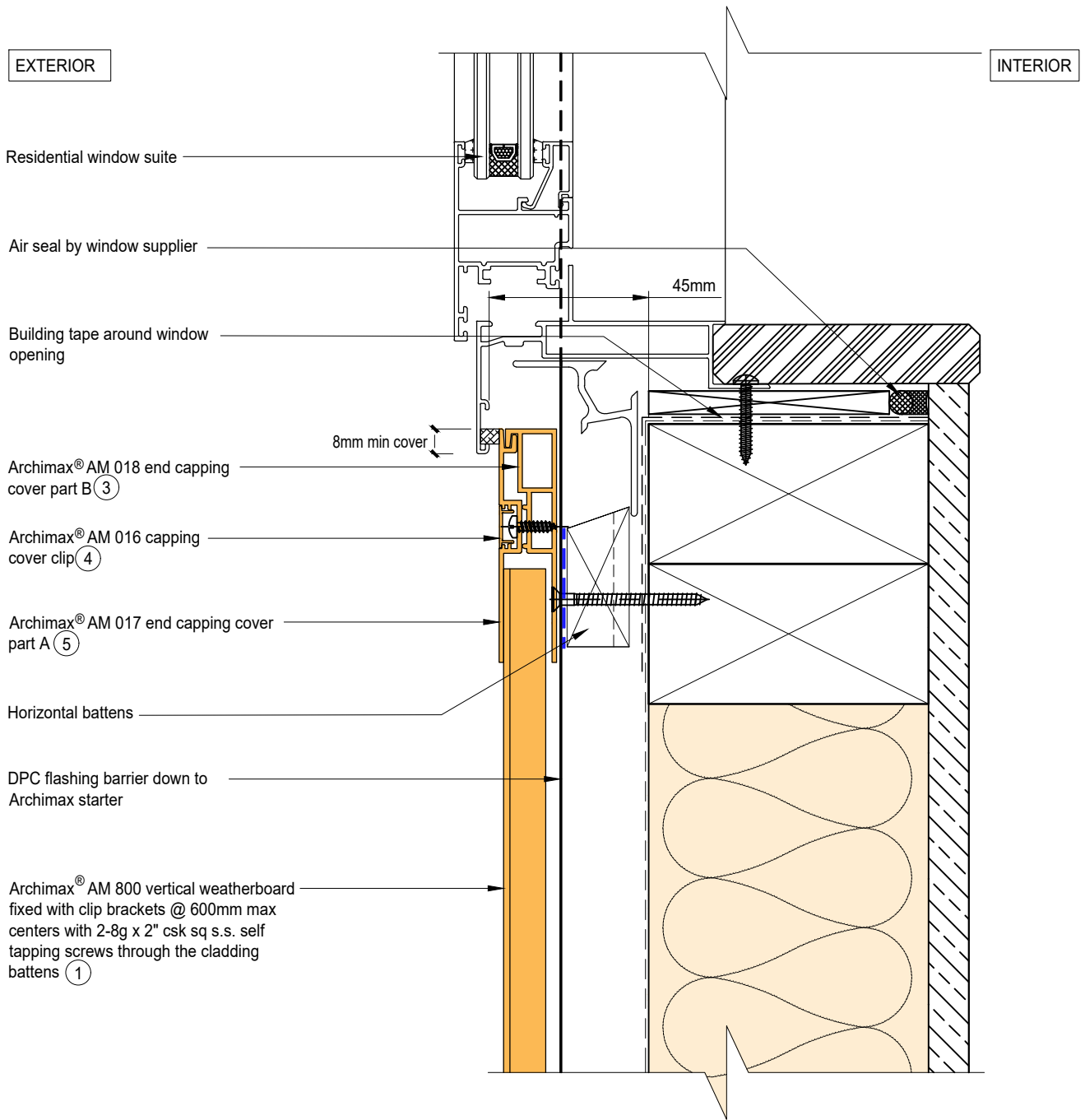


NOTE:

1. Stop ends to be installed at flashing ends.
2. Minimum Clearance between the AIR BARRIER and WINDOW JOINERY to be 45mm. Window Joinery should not be permanently fixed until cladding installed.




 <p>ARCHIMAX ALUMINIUM CLADDING SYSTEM <i>Creating more durable building envelopes</i> www.archimax.co.nz</p>	<p>System AM800 - VERTICAL WEATHERBOARD</p>	<p>Detail ARCHIMAX® WINDOW HEAD DETAIL</p>	<p>Drawing No. Rev. AM-WH-V1 D</p>
	<p>This drawing is the copyright of Archimax Limited. Modification of details for job specification requirements must be approved by Archimax Ltd. The building designer is ultimately responsible to ensure all building work is designed and constructed according to building code requirements, best code of practice industry guidelines. All components must be supplied by Archimax. Archimax reserves the right to alter or upgrade details at any time without prior notice.</p>		<p>Scale Date 1:2 NOV23</p>

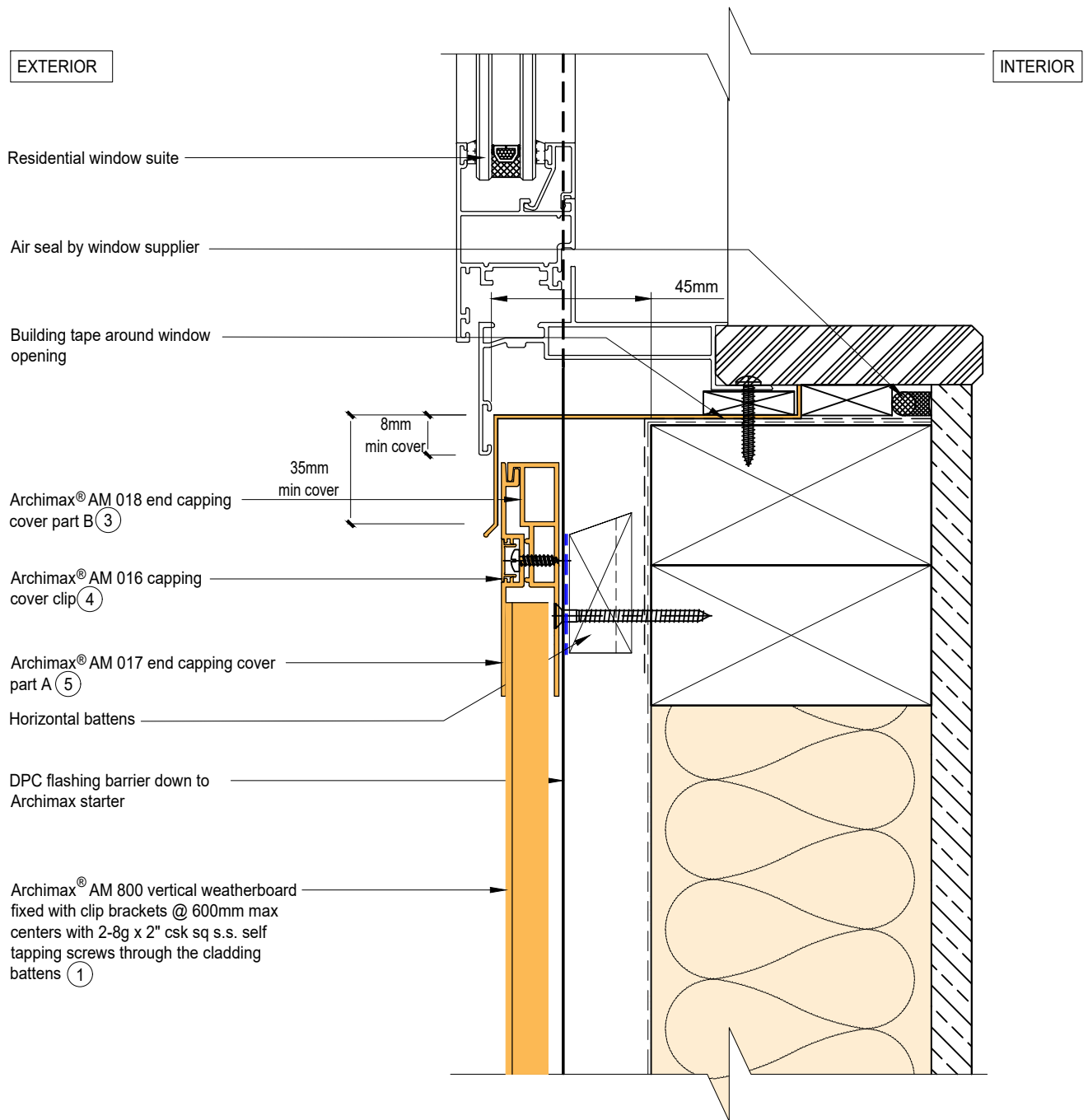


NOTE:

1. Minimum Clearance between the AIR BARRIER and WINDOW JOINERY to be 45mm. Window Joinery should not be permanently fixed until cladding installed.




 <p>ARCHIMAX ALUMINIUM CLADDING SYSTEM <i>Creating more durable building envelopes</i> www.archimax.co.nz</p>	System AM800 - VERTICAL WEATHERBOARD	Detail ARCHIMAX® WINDOW SILL DETAIL	Drawing No. Rev. AM-WS-V2.1 D			
	<p>This drawing is the copyright of Archimax Limited. Modification of details for job specification requirements must be approved by Archimax Ltd. The building designer is ultimately responsible to ensure all building work is designed and constructed according to building code requirements, best code of practice industry guidelines. All components must be supplied by Archimax. Archimax reserves the right to alter or upgrade details at any time without prior notice.</p>		<table border="1"> <tr> <td>Scale</td> <td>Date</td> </tr> <tr> <td>1:2</td> <td>NOV23</td> </tr> </table>	Scale	Date	1:2
Scale	Date					
1:2	NOV23					



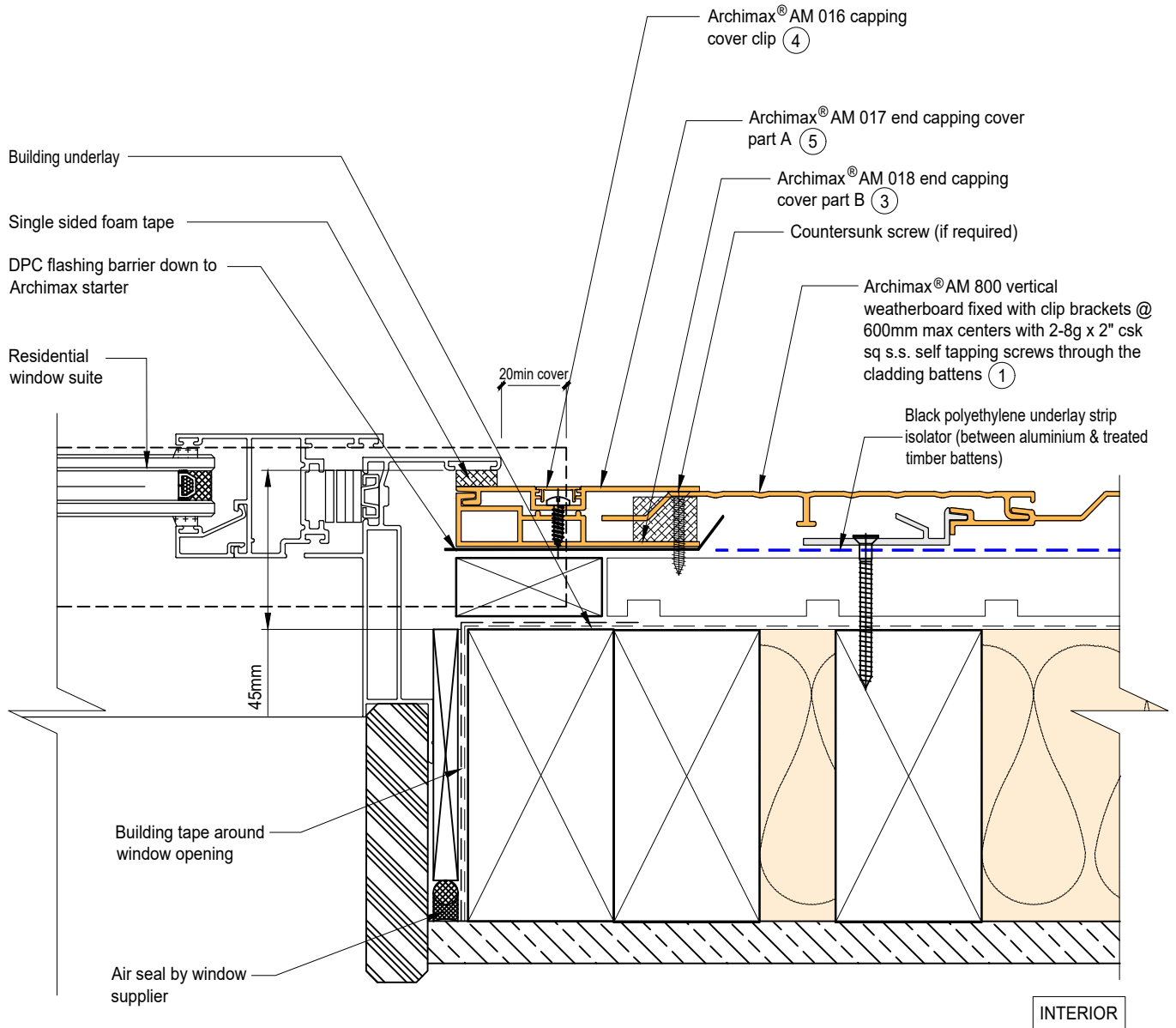
NOTE:

1. Minimum Clearance between the AIR BARRIER and WINDOW JOINERY to be 45mm. Window Joinery should not be permanently fixed until cladding installed.



 <p>ARCHIMAX ALUMINIUM CLADDING SYSTEM <i>Creating more durable building envelopes</i> www.archimax.co.nz</p>	System AM800 - VERTICAL WEATHERBOARD	Detail ARCHIMAX® WINDOW SILL DETAIL	Drawing No. Rev. AM-WS-V2.2 D	
	<small>This drawing is the copyright of Archimax Limited. Modification of details for job specification requirements must be approved by Archimax Ltd. The building designer is ultimately responsible to ensure all building work is designed and constructed according to building code requirements, best code of practice industry guidelines. All components must be supplied by Archimax. Archimax reserves the right to alter or upgrade details at any time without prior notice.</small>			Scale 1:2

EXTERIOR




INTERIOR

NOTE:

1. Minimum Clearance between the AIR BARRIER and WINDOW JOINERY to be 45mm. Window Joinery should not be permanently fixed until cladding installed.

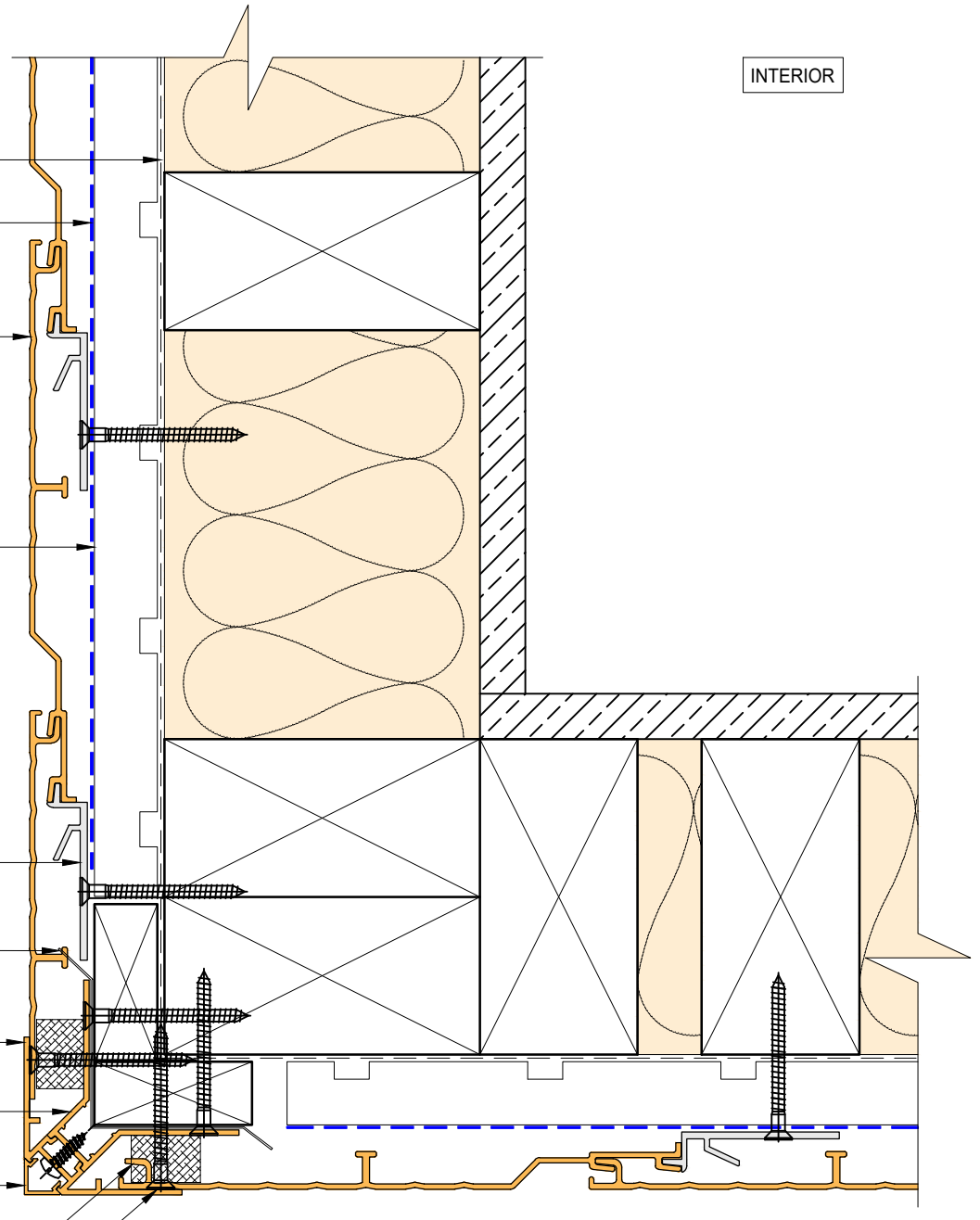


 <p>ARCHIMAX ALUMINIUM CLADDING SYSTEM Creating more durable building envelopes www.archimax.co.nz</p>	System AM800 - VERTICAL WEATHERBOARD	Detail ARCHIMAX® WINDOW JAMB DETAIL	Drawing No. AM-WJ-V3	Rev. D
	<p>This drawing is the copyright of Archimax Limited. Modification of details for job specification requirements must be approved by Archimax Ltd. The building designer is ultimately responsible to ensure all building work is designed and constructed according to building code requirements, best code of practice industry guidelines. All components must be supplied by Archimax. Archimax reserves the right to alter or upgrade details at any time without prior notice.</p>			Scale 1:2

EXTERIOR

INTERIOR

- Building Underlay
- Black polyethylene underlay strip isolator (between aluminium & treated timber battens)
- Archimax® AM 800 vertical weatherboard fixed with clip brackets @ 600mm max centers with 2-8g x 2" csk sq s.s. self tapping screws through the cladding battens ①
- Horizontal Battens
- Archimax® clip bracket AM 029
- DPC flashing barrier down to Archimax starter
- Archimax® AM 019 internal/external corner part A ⑦
- Archimax® AM 022 internal corner part B ⑨
- Archimax® AM 020 external corner cover clip ⑪
- Foam Tape
- Countersunk screw (if required)



ARCHIMAX
ALUMINIUM CLADDING SYSTEM
Creating more durable building envelopes
www.archimax.co.nz

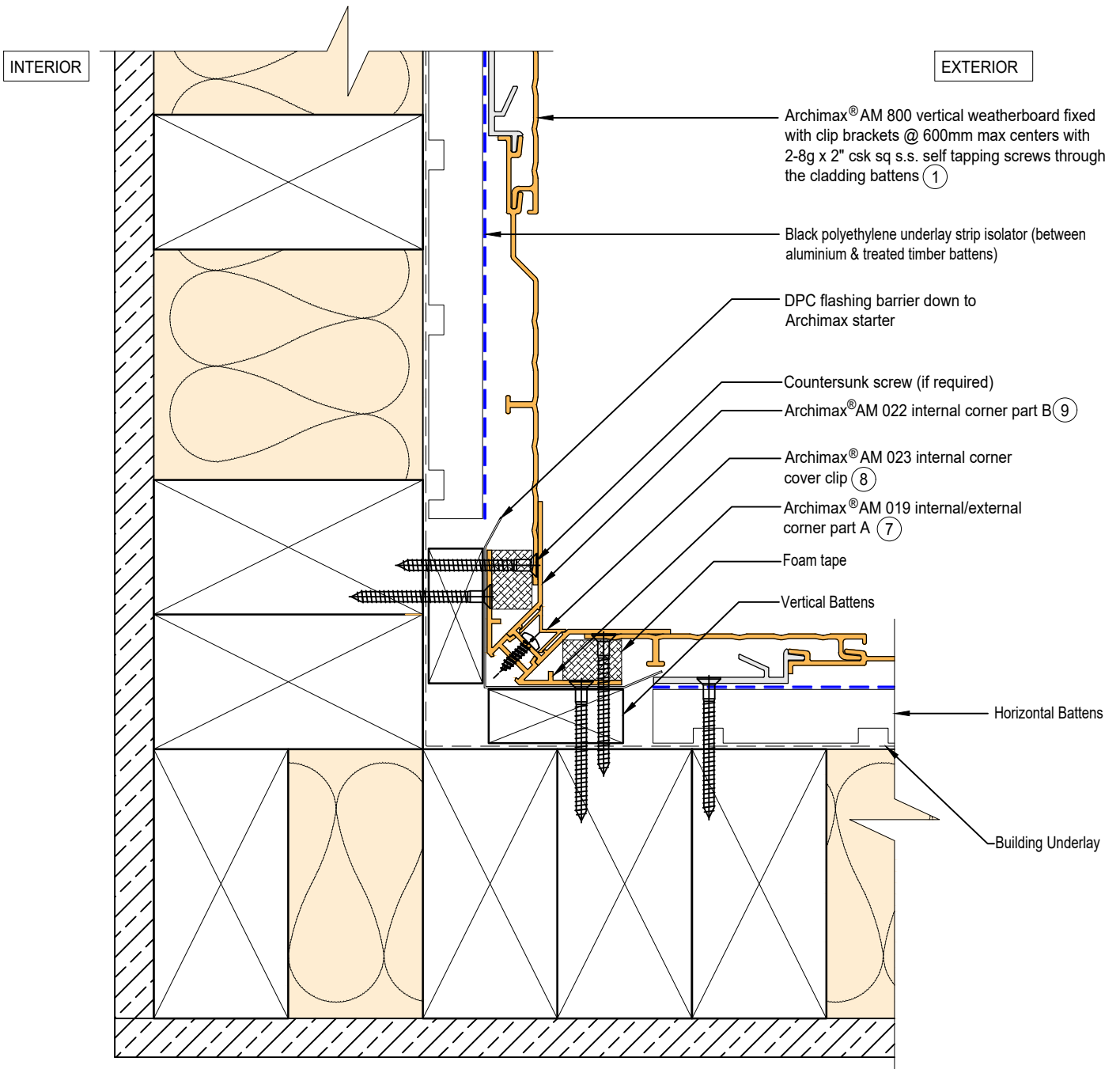
System
AM800 - VERTICAL WEATHERBOARD


Detail
ARCHIMAX® EXTERNAL CORNER
DETAIL

Drawing No. Rev.
AM-EXT-V4 D

This drawing is the copyright of Archimax Limited. Modification of details for job specification requirements must be approved by Archimax Ltd. The building designer is ultimately responsible to ensure all building work is designed and constructed according to building code requirements, best code of practice industry guidelines. All components must be supplied by Archimax. Archimax reserves the right to alter or upgrade details at any time without prior notice.

Scale Date
1:2 NOV23



 <p>ARCHIMAX ALUMINIUM CLADDING SYSTEM <i>Creating more durable building envelopes</i> www.archimax.co.nz</p>	<p>System AM800 - VERTICAL WEATHERBOARD</p>	<p>Detail ARCHIMAX® INTERNAL CORNER DETAIL</p>	<p>Drawing No. Rev. AM-INT-V5 D</p>
	<p>This drawing is the copyright of Archimax Limited. Modification of details for job specification requirements must be approved by Archimax Ltd. The building designer is ultimately responsible to ensure all building work is designed and constructed according to building code requirements, best code of practice industry guidelines. All components must be supplied by Archimax. Archimax reserves the right to alter or upgrade details at any time without prior notice.</p>		<p>Scale Date 1:2 NOV23</p>

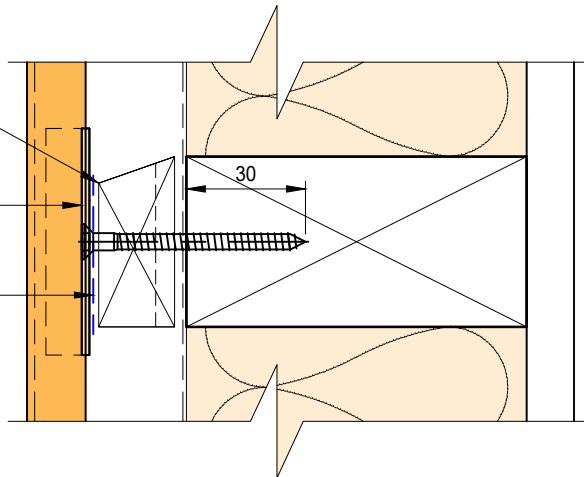
EXTERIOR

INTERIOR

Castellated timber batten (Horizontal)

Archimax® clip bracket AM 029

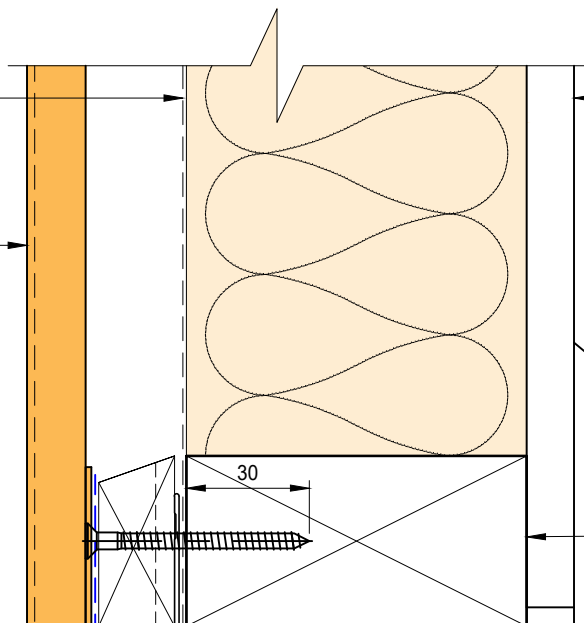
Black polyethylene underlay strip isolator (between aluminium & treated timber battens)



Building underlay

Interior lining

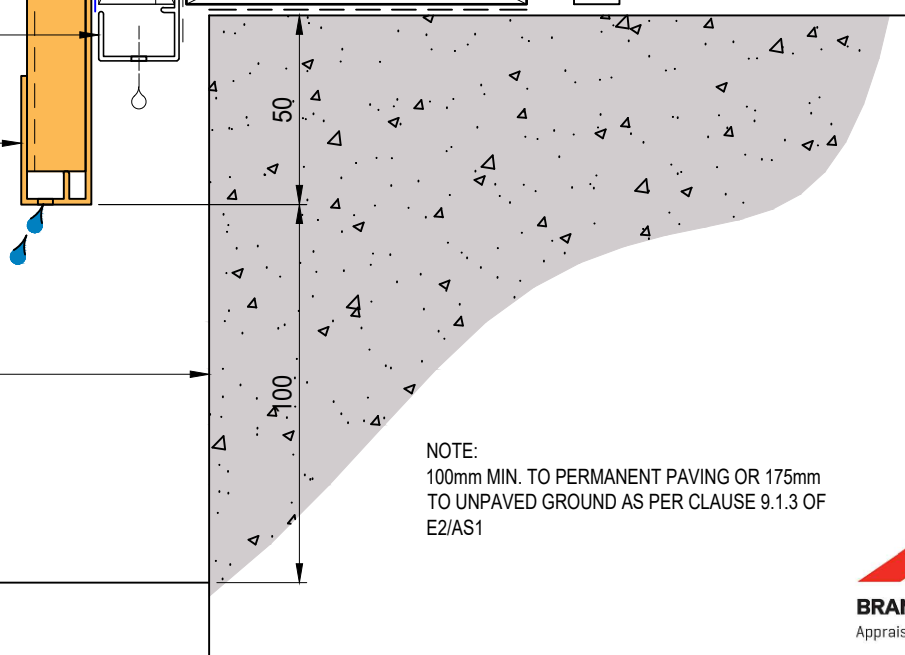
① Archimax® AM 800 vertical weatherboard fixed with clip brackets @ 600mm max centers with 2-8g x 2" csk sq s.s. self tapping screws through the cladding battens



Bottom plate over DPC

Cavity vent strip (By others)

② Archimax® AM 009 board starter



Concrete slab or brickwork (By others)

Finish ground level

NOTE:
100mm MIN. TO PERMANENT PAVING OR 175mm TO UNPAVED GROUND AS PER CLAUSE 9.1.3 OF E2/AS1



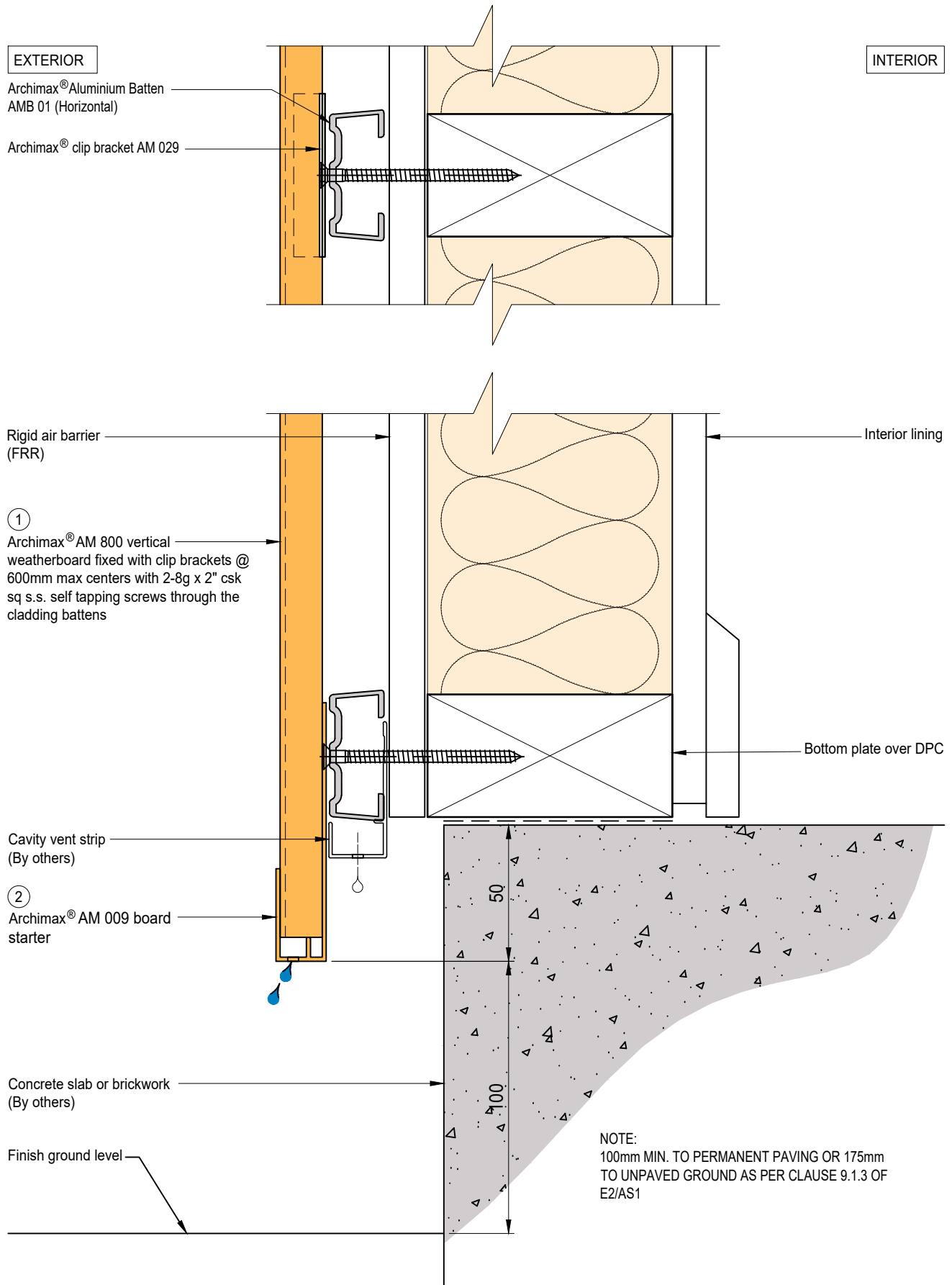
System
AM800 - VERTICAL WEATHERBOARD

Detail
ARCHIMAX® CONCRETE FLOOR BOARD STARTER DETAIL - TIMBER

Drawing No. Rev.
AM-CBS-V6.1 D

This drawing is the copyright of Archimax Limited. Modification of details for job specification requirements must be approved by Archimax Ltd. The building designer is ultimately responsible to ensure all building work is designed and constructed according to building code requirements, best code of practice industry guidelines. All components must be supplied by Archimax. Archimax reserves the right to alter or upgrade details at any time without prior notice.

Scale Date
1:2 NOV23



EXTERIOR

INTERIOR

Building underlay

Archimax® AM 800 vertical weatherboard fixed with clip brackets @ 600mm max centers with 2-8g x 2" csk sq s.s. self tapping screws through the cladding battens ①

Black polyethylene underlay strip isolator (between aluminium & treated timber battens)

Flexible flashing tape

Cavity vent strip

Archimax AM 009 board starter ②

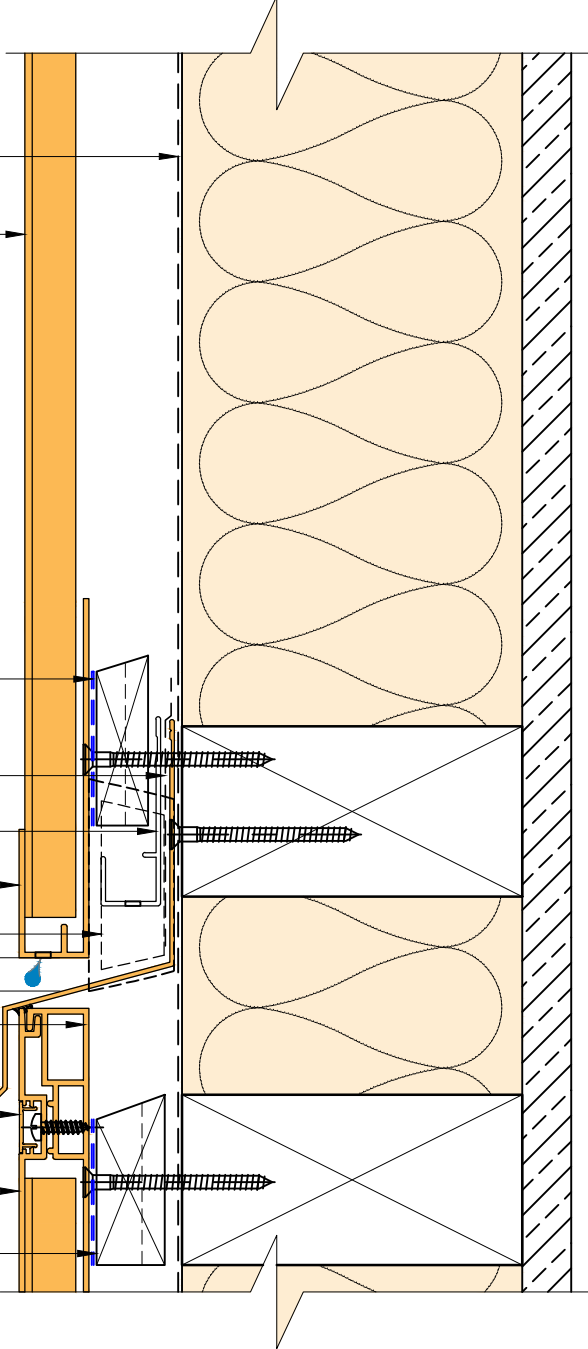
Inter-Storey flashing stop ends

Archimax® AM 018 end capping cover part B ③

Archimax® AM 016 capping cover clip ④

Archimax® AM 017 end capping cover part A ⑤

Horizontal battens

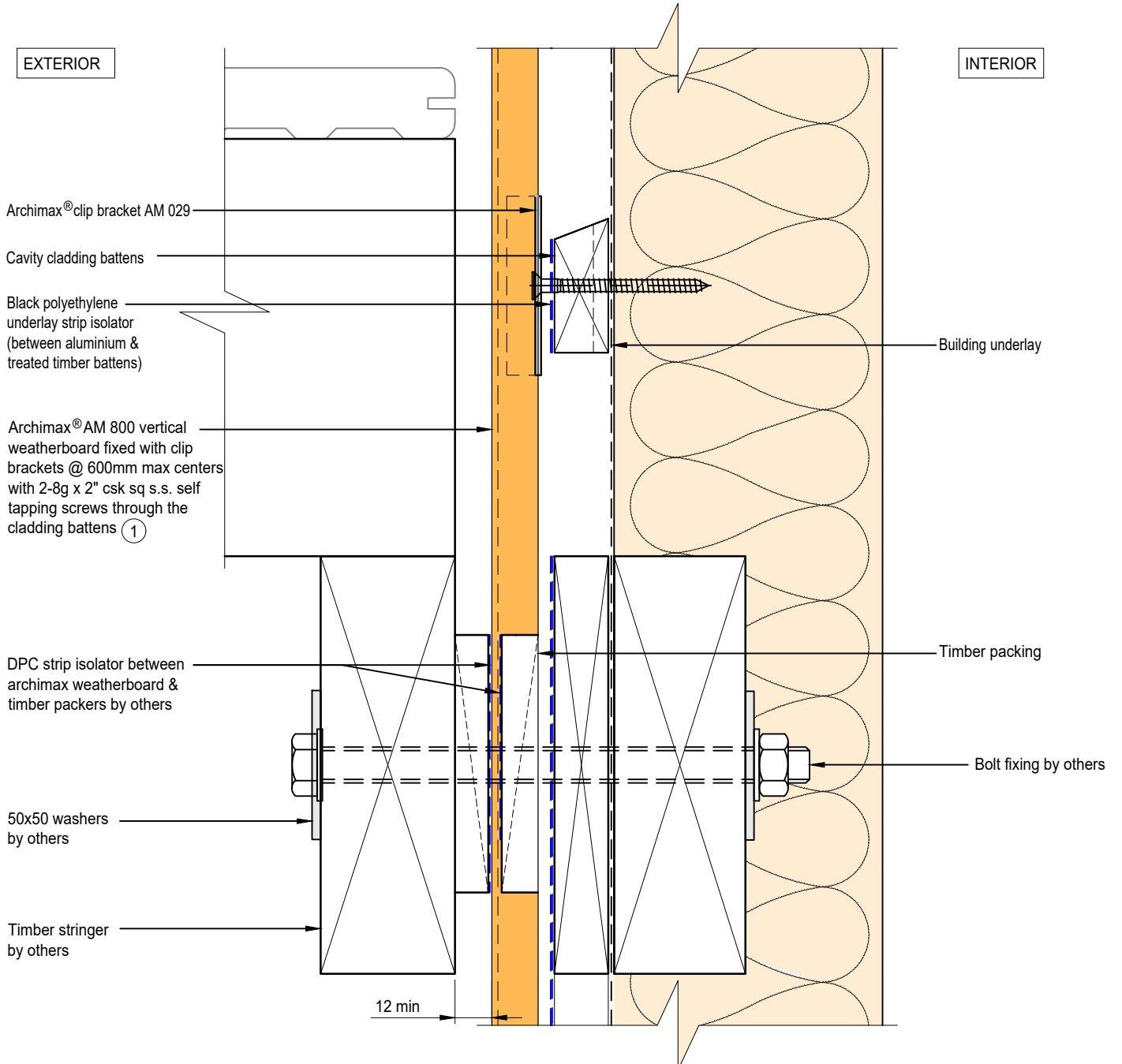



NOTE:
STOP ENDS TO BE INSTALLED AT INTER-STOREY FLASHING ENDS



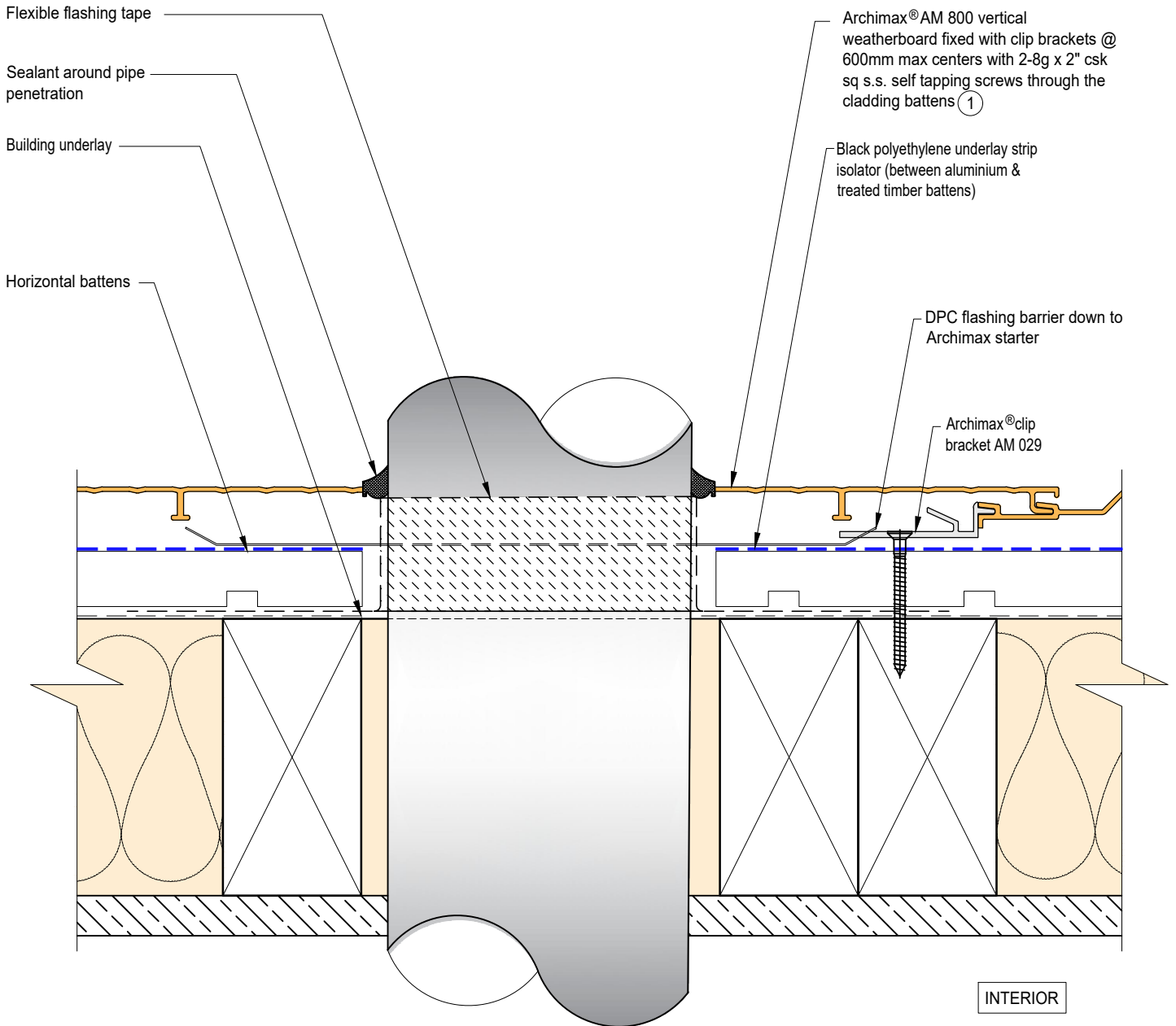
ARCHIMAX
ALUMINIUM CLADDING SYSTEM
Creating more durable building envelopes
www.archimax.co.nz

System AM800 - VERTICAL WEATHERBOARD	Detail ARCHIMAX® HORIZONTAL JOINT DETAIL	Drawing No. AM-HJ-V7	Rev. D
This drawing is the copyright of Archimax Limited. Modification of details for job specification requirements must be approved by Archimax Ltd. The building designer is ultimately responsible to ensure all building work is designed and constructed according to building code requirements, best code of practice industry guidelines. All components must be supplied by Archimax. Archimax reserves the right to alter or upgrade details at any time without prior notice.		Scale 1:2	Date NOV23



 <p>ARCHIMAX ALUMINIUM CLADDING SYSTEM <i>Creating more durable building envelopes</i> www.archimax.co.nz</p>	System AM800 - VERTICAL WEATHERBOARD	Detail ARCHIMAX® DECK JUNCTION DETAIL	Drawing No. Rev. AM-DJ-V8 D			
	<p>This drawing is the copyright of Archimax Limited. Modification of details for job specification requirements must be approved by Archimax Ltd. The building designer is ultimately responsible to ensure all building work is designed and constructed according to building code requirements, best code of practice industry guidelines. All components must be supplied by Archimax. Archimax reserves the right to alter or upgrade details at any time without prior notice.</p>		<table border="1"> <tr> <td>Scale</td> <td>Date</td> </tr> <tr> <td>1:2</td> <td>NOV23</td> </tr> </table>	Scale	Date	1:2
Scale	Date					
1:2	NOV23					

EXTERIOR



System
AM800 - VERTICAL WEATHERBOARD

Detail
ARCHIMAX® PIPE PENETRATION -
PLAN VIEW DETAIL

Drawing No. Rev.
AM-PP-V9a D

This drawing is the copyright of Archimax Limited. Modification of details for job specification requirements must be approved by Archimax Ltd. The building designer is ultimately responsible to ensure all building work is designed and constructed according to building code requirements, best code of practice industry guidelines. All components must be supplied by Archimax. Archimax reserves the right to alter or upgrade details at any time without prior notice.

Scale Date
1:2 NOV23

EXTERIOR

INTERIOR

Archimax® AM 800 vertical weatherboard fixed with clip brackets @ 600mm max centers with 2-8g x 2" csk sq s.s. self tapping screws through the cladding battens ①

Archimax® clip bracket AM 029

Horizontal battens

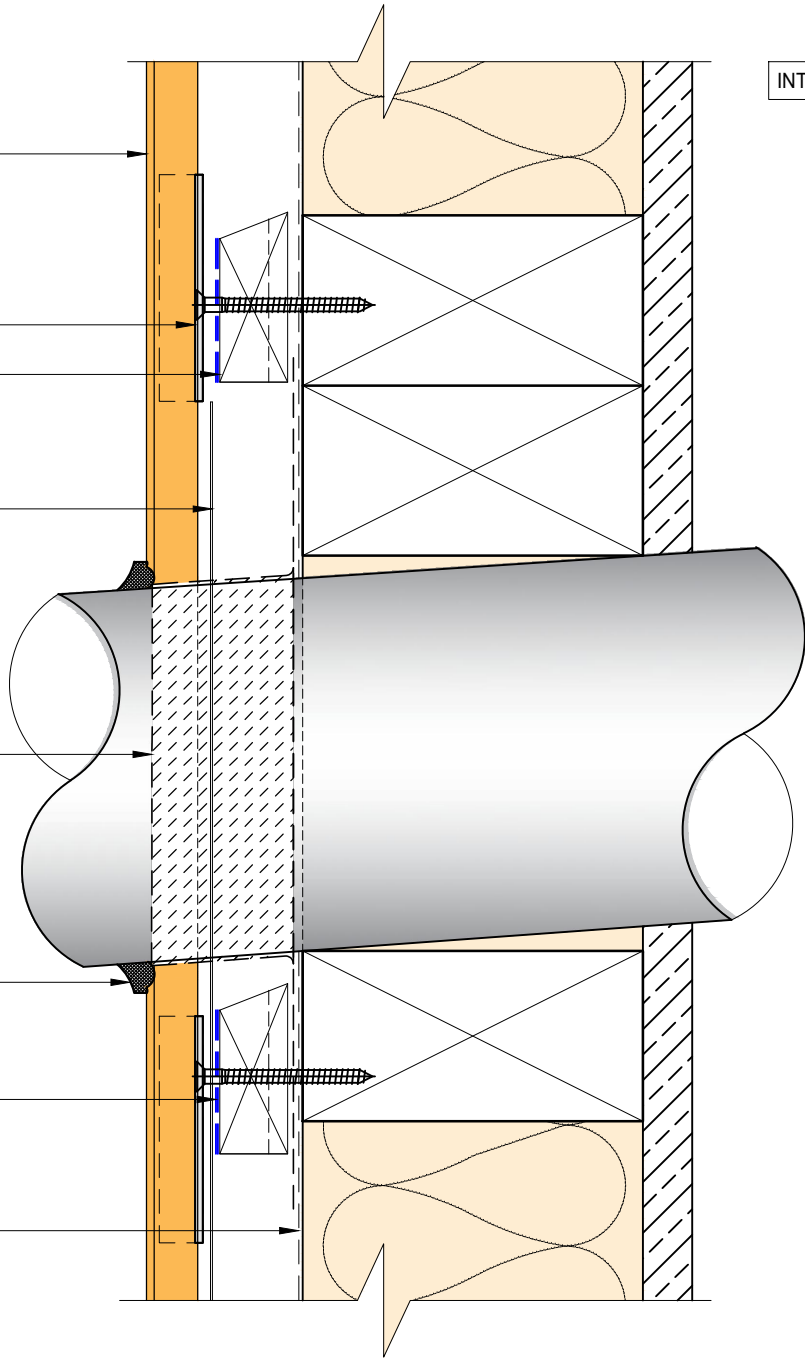
DPC flashing barrier down to Archimax starter

Flexible flashing tape

Sealant around pipe penetration

Black polyethylene underlay strip isolator (between aluminium & treated timber battens)

Building underlay



BRANZ Appraised
Appraisal No. 1173 [2021]

EXTERIOR

INTERIOR

Compressible foam tape

Archimax® AM 018 end capping cover part B (3)

Archimax® AM 016 capping cover clip (4)

Archimax® AM 017 end capping cover part A (5)

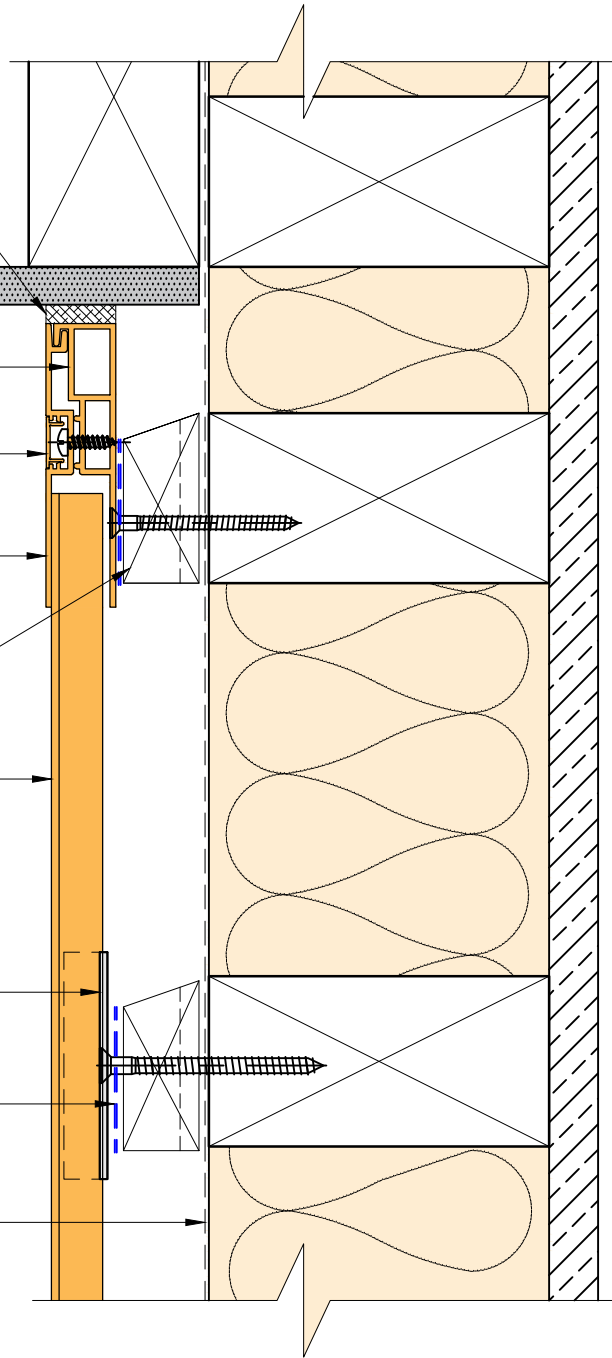
Horizontal battens

Archimax® AM 800 vertical weatherboard fixed with clip brackets @ 600mm max centers with 2-8g x 2" csk sq s.s. self tapping screws through the cladding battens (1)

Archimax® clip bracket AM 029

Black polyethylene underlay strip isolator (between aluminium & treated timber battens)

Building underlay



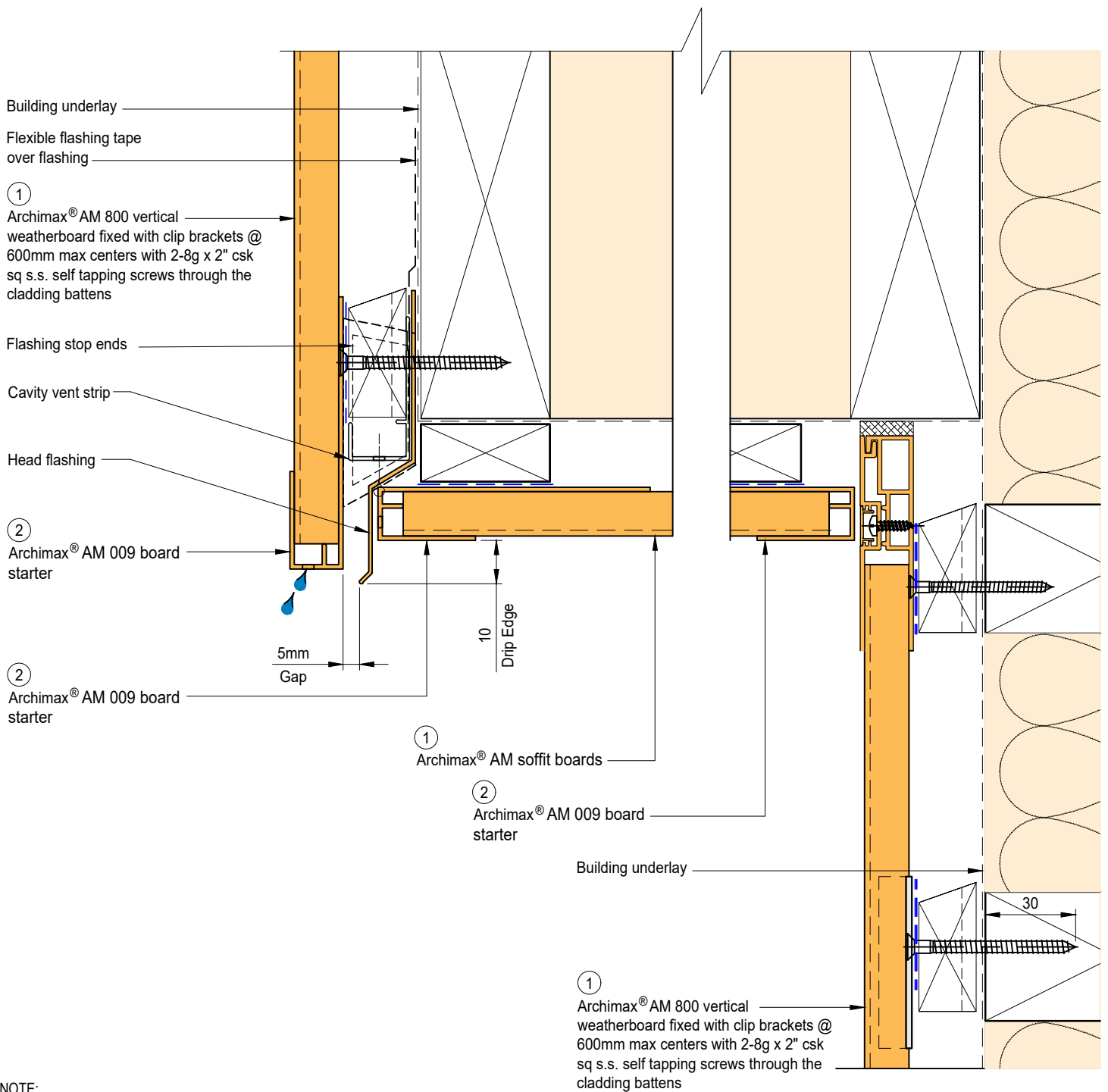
System
AM800 - VERTICAL WEATHERBOARD

Detail
ARCHIMAX® SOFFIT DETAIL

Drawing No. Rev.
AM-SO-V10 D


This drawing is the copyright of Archimax Limited. Modification of details for job specification requirements must be approved by Archimax Ltd. The building designer is ultimately responsible to ensure all building work is designed and constructed according to building code requirements, best code of practice industry guidelines. All components must be supplied by Archimax. Archimax reserves the right to alter or upgrade details at any time without prior notice.

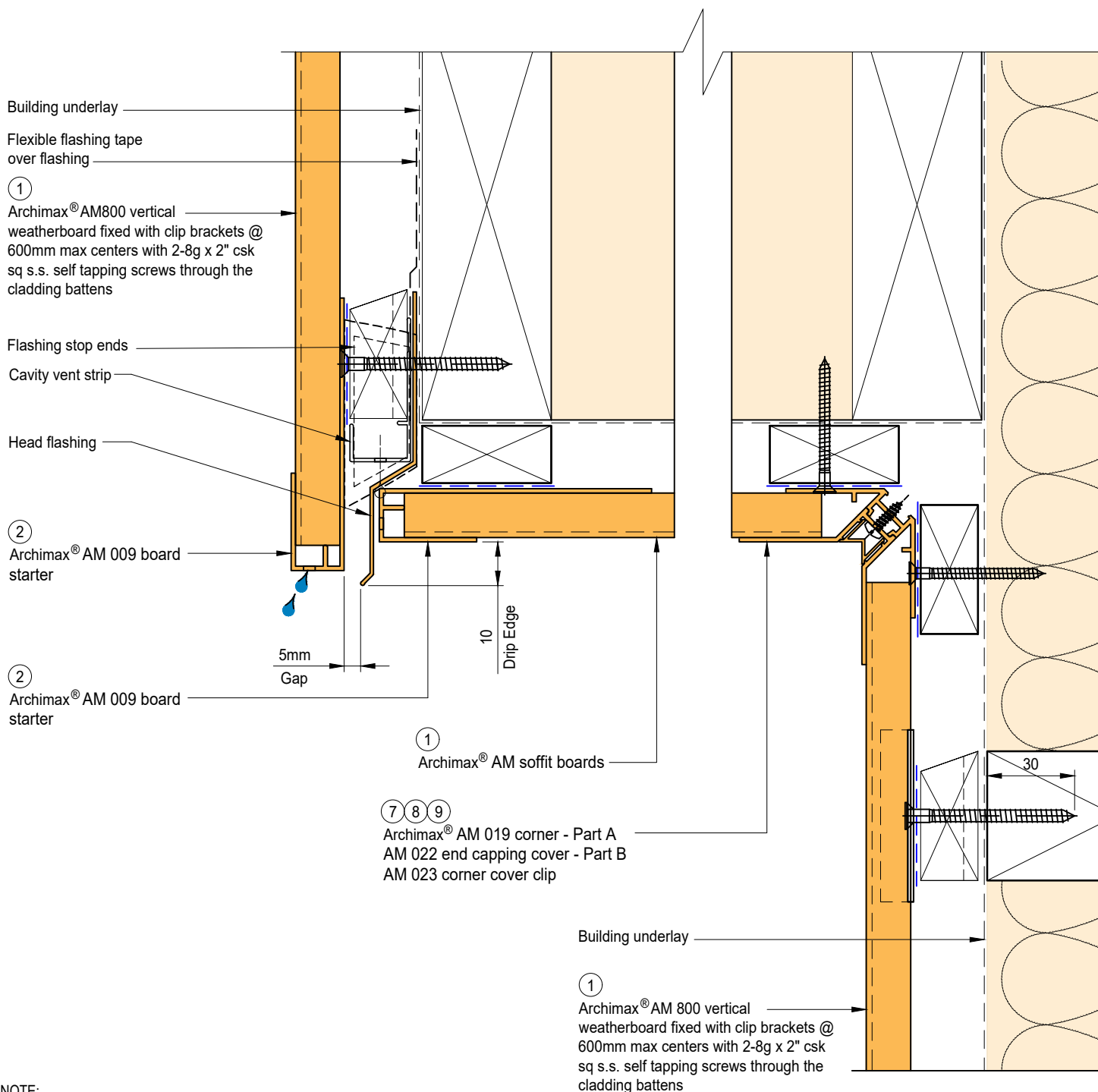
Scale Date
1:2 NOV23



NOTE:
STOP ENDS TO BE INSTALLED AT FLASHING ENDS




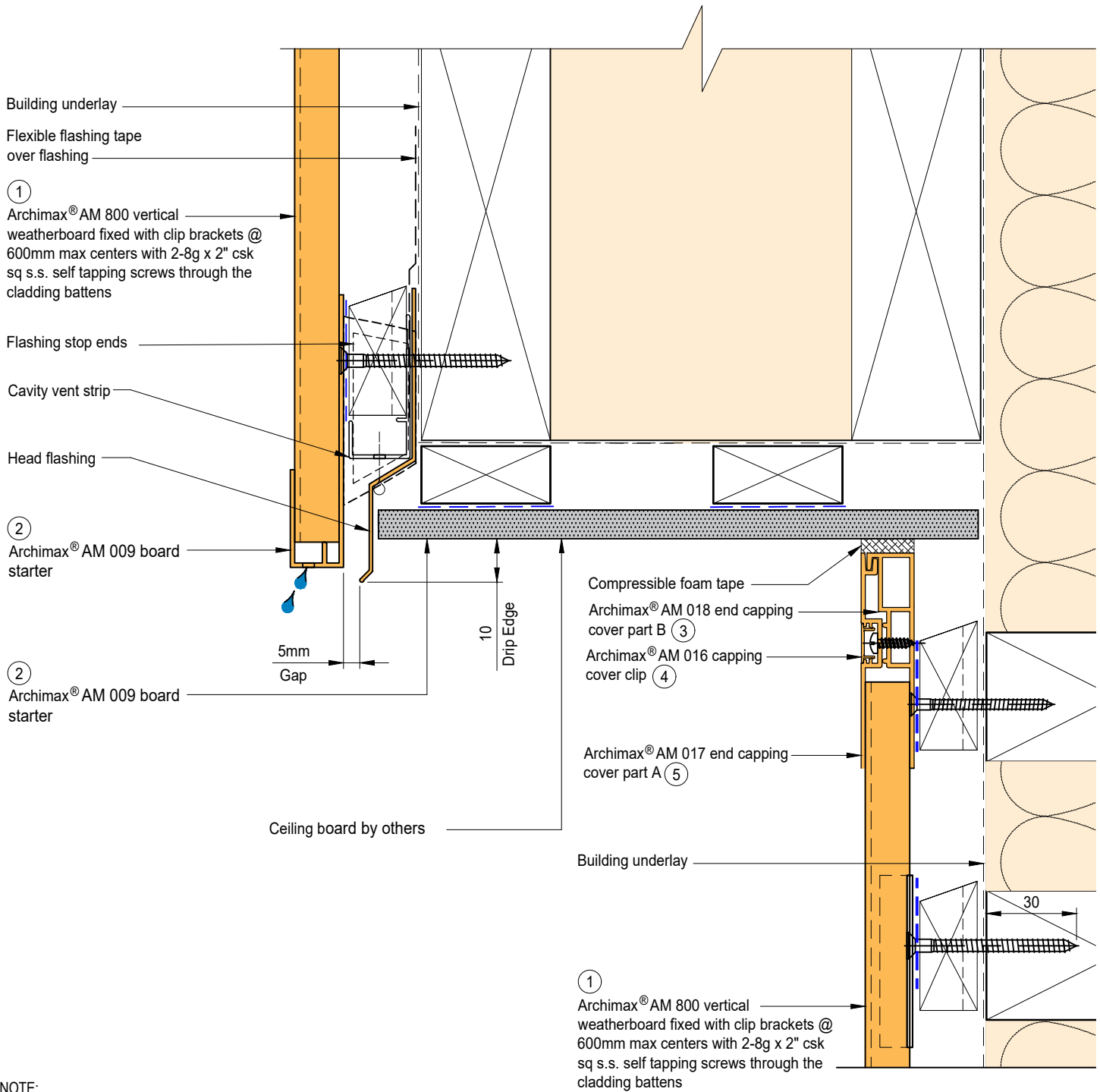
 <p>ARCHIMAX ALUMINIUM CLADDING SYSTEM <i>Creating more durable building envelopes</i> www.archimax.co.nz</p>	<p>System AM800 - VERTICAL WEATHERBOARD</p>	<p>Detail ARCHIMAX® FASCIA, SOFFIT & WALL DETAIL</p>	<p>Drawing No. Rev. AM-SO-V11.1 D</p>	
	<p>This drawing is the copyright of Archimax Limited. Modification of details for job specification requirements must be approved by Archimax Ltd. The building designer is ultimately responsible to ensure all building work is designed and constructed according to building code requirements, best code of practice industry guidelines. All components must be supplied by Archimax. Archimax reserves the right to alter or upgrade details at any time without prior notice.</p>		<p>Scale 1:2</p>	<p>Date NOV23</p>



NOTE:
STOP ENDS TO BE INSTALLED AT FLASHING ENDS




 <p>ARCHIMAX ALUMINIUM CLADDING SYSTEM <i>Creating more durable building envelopes</i> www.archimax.co.nz</p>	System AM800 - VERTICAL WEATHERBOARD	Detail ARCHIMAX® FACIA, SOFFIT & WALL DETAIL (90° SOFFIT / WALL) DETAIL	Drawing No. Rev. AM-SO-V11.2 D	
	<p>This drawing is the copyright of Archimax Limited. Modification of details for job specification requirements must be approved by Archimax Ltd. The building designer is ultimately responsible to ensure all building work is designed and constructed according to building code requirements, best code of practice industry guidelines. All components must be supplied by Archimax. Archimax reserves the right to alter or upgrade details at any time without prior notice.</p>			Scale 1:2



NOTE:
STOP ENDS TO BE INSTALLED AT FLASHING ENDS



 <p>ARCHIMAX ALUMINIUM CLADDING SYSTEM <i>Creating more durable building envelopes</i> www.archimax.co.nz</p>	System AM800 - VERTICAL WEATHERBOARD	Detail ARCHIMAX® FASCIA, BOARD SOFFIT & WALL DETAIL	Drawing No. Rev. AM-SO-V11.3 D	
	<p>This drawing is the copyright of Archimax Limited. Modification of details for job specification requirements must be approved by Archimax Ltd. The building designer is ultimately responsible to ensure all building work is designed and constructed according to building code requirements, best code of practice industry guidelines. All components must be supplied by Archimax. Archimax reserves the right to alter or upgrade details at any time without prior notice.</p>		Scale 1:2	Date NOV23

EXTERIOR

Selected roofing

Flashing & sealed by others

Archimax® AM 018 end capping cover part B (3)

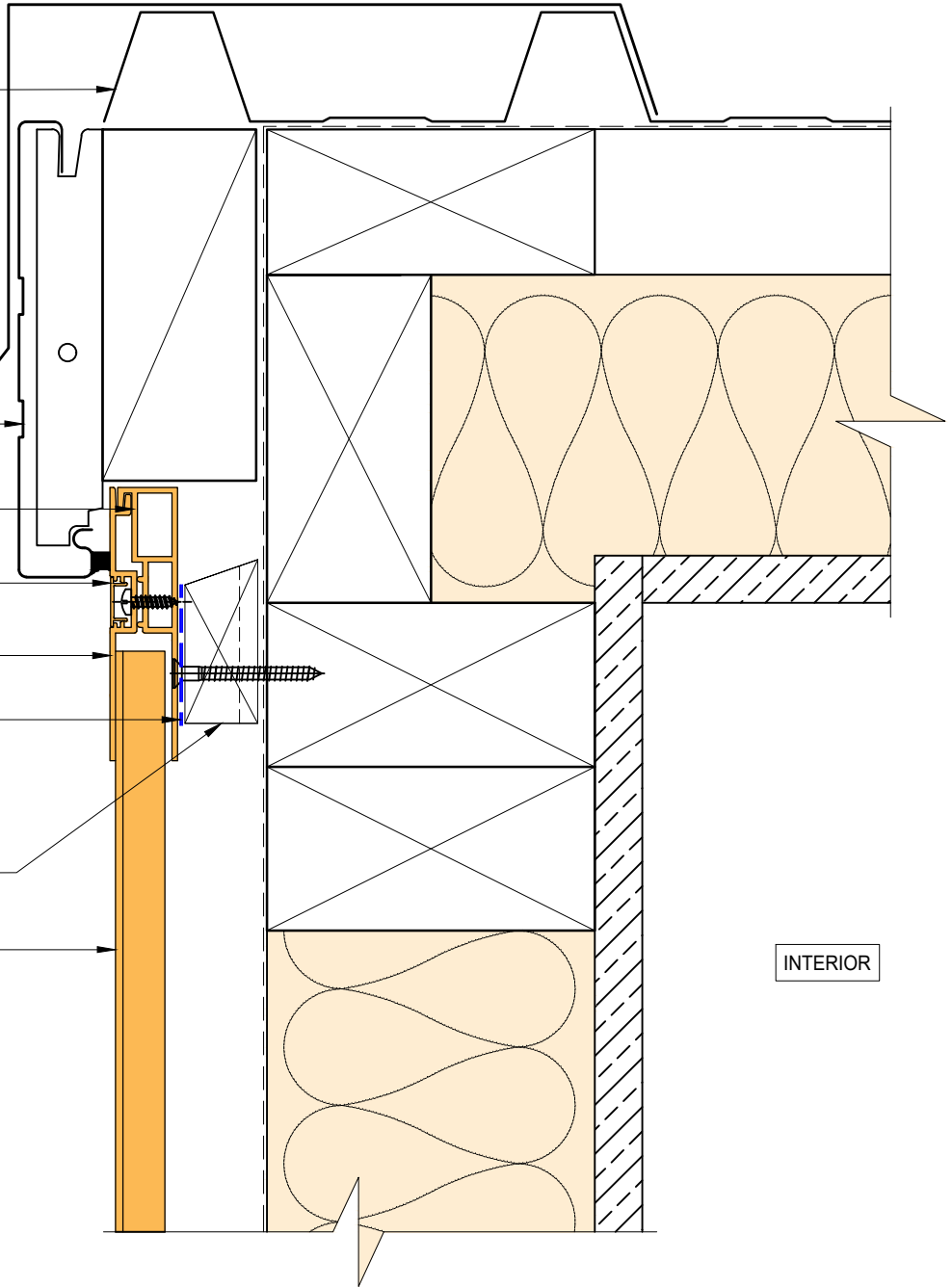
Archimax® AM 016 capping cover clip (4)

Archimax® AM 017 end capping cover part A (5)

Black polyethylene underlay strip isolator (between aluminium & treated timber battens)

Horizontal battens

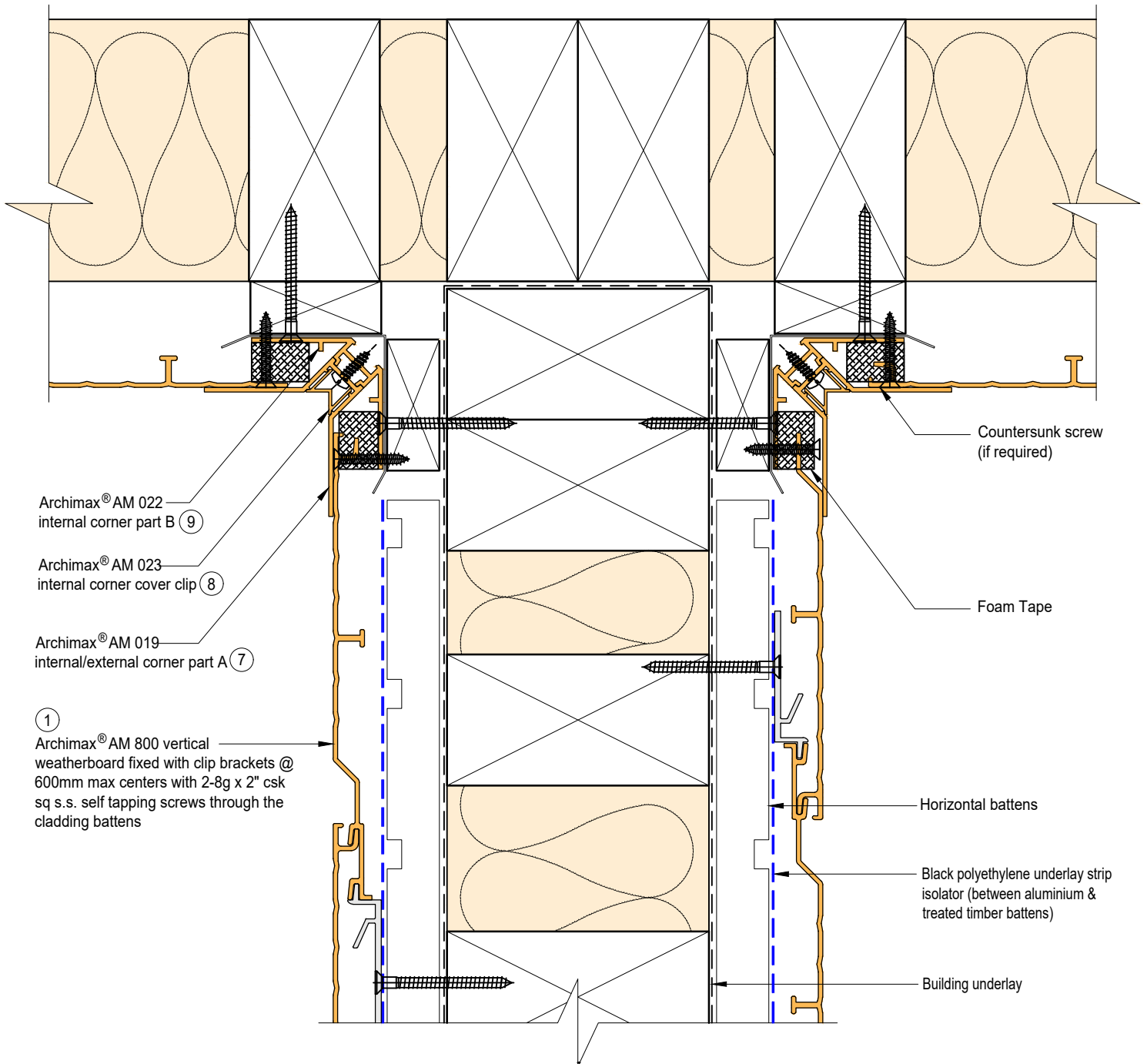
Archimax® AM 800 vertical weatherboard fixed with clip brackets @ 600mm max centers with 2-8g x 2" csk sq s.s. self tapping screws through the cladding battens (1)




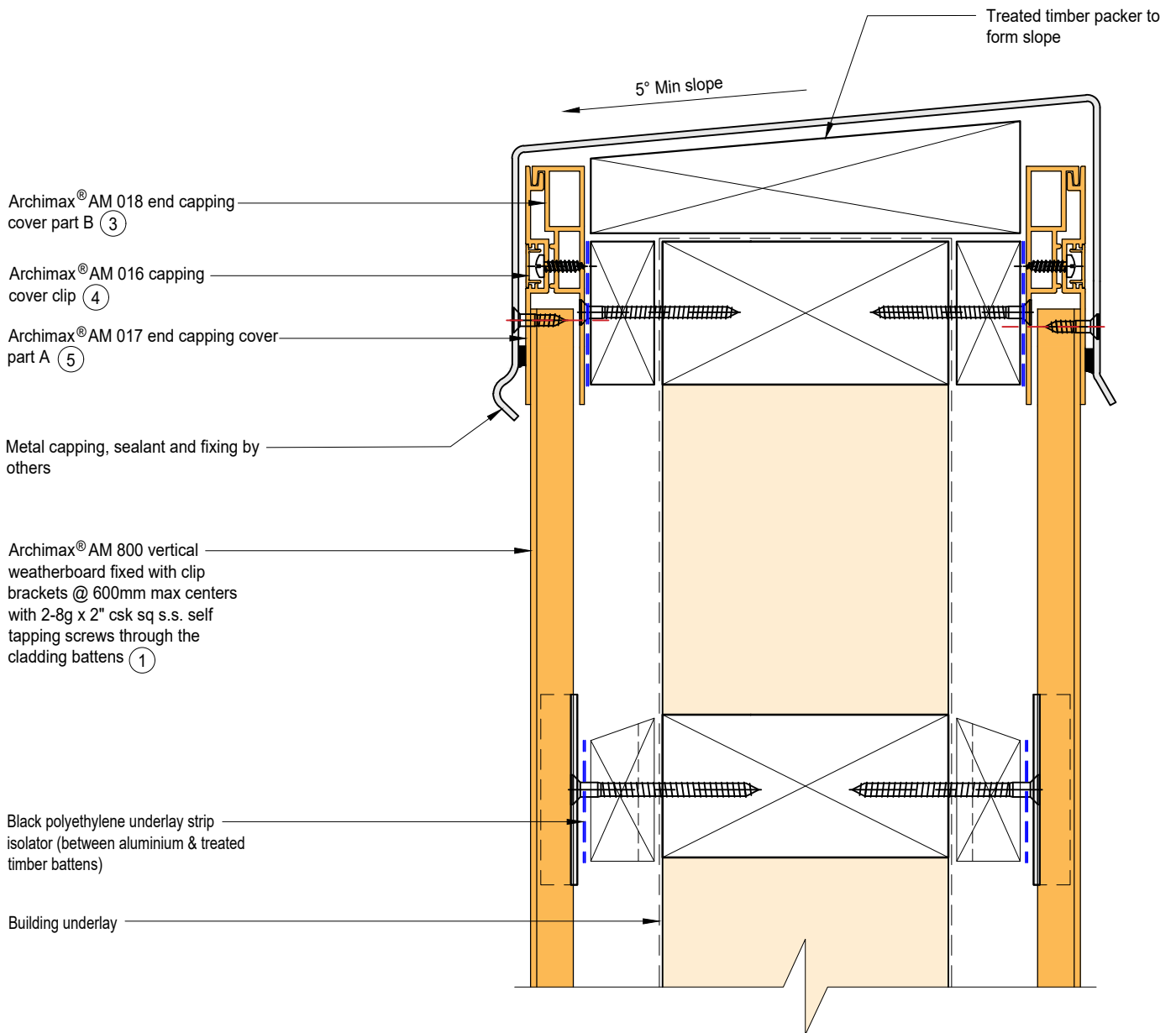
INTERIOR




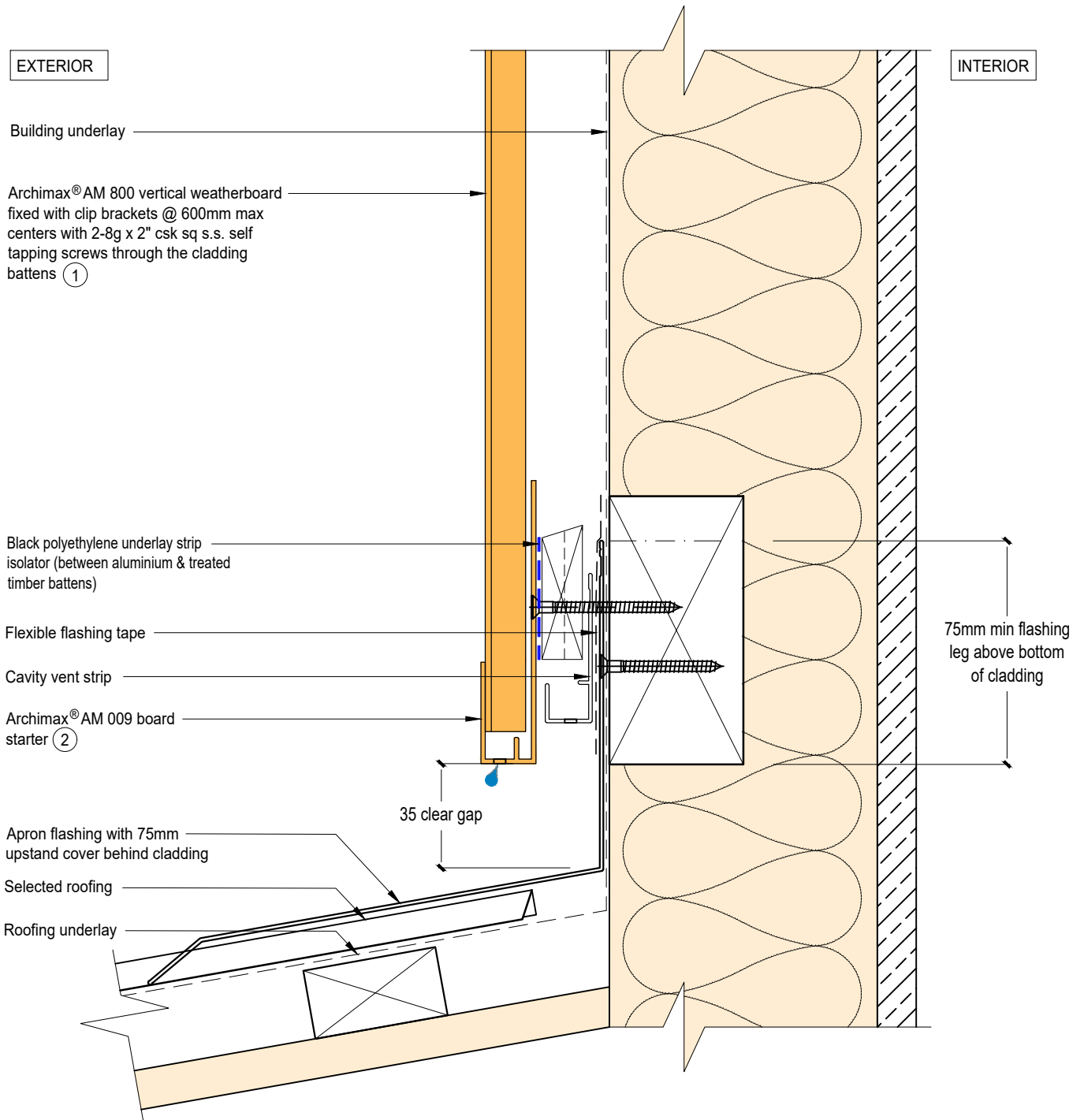
BRANZ Appraised
Appraisal No. 1173 [2021]




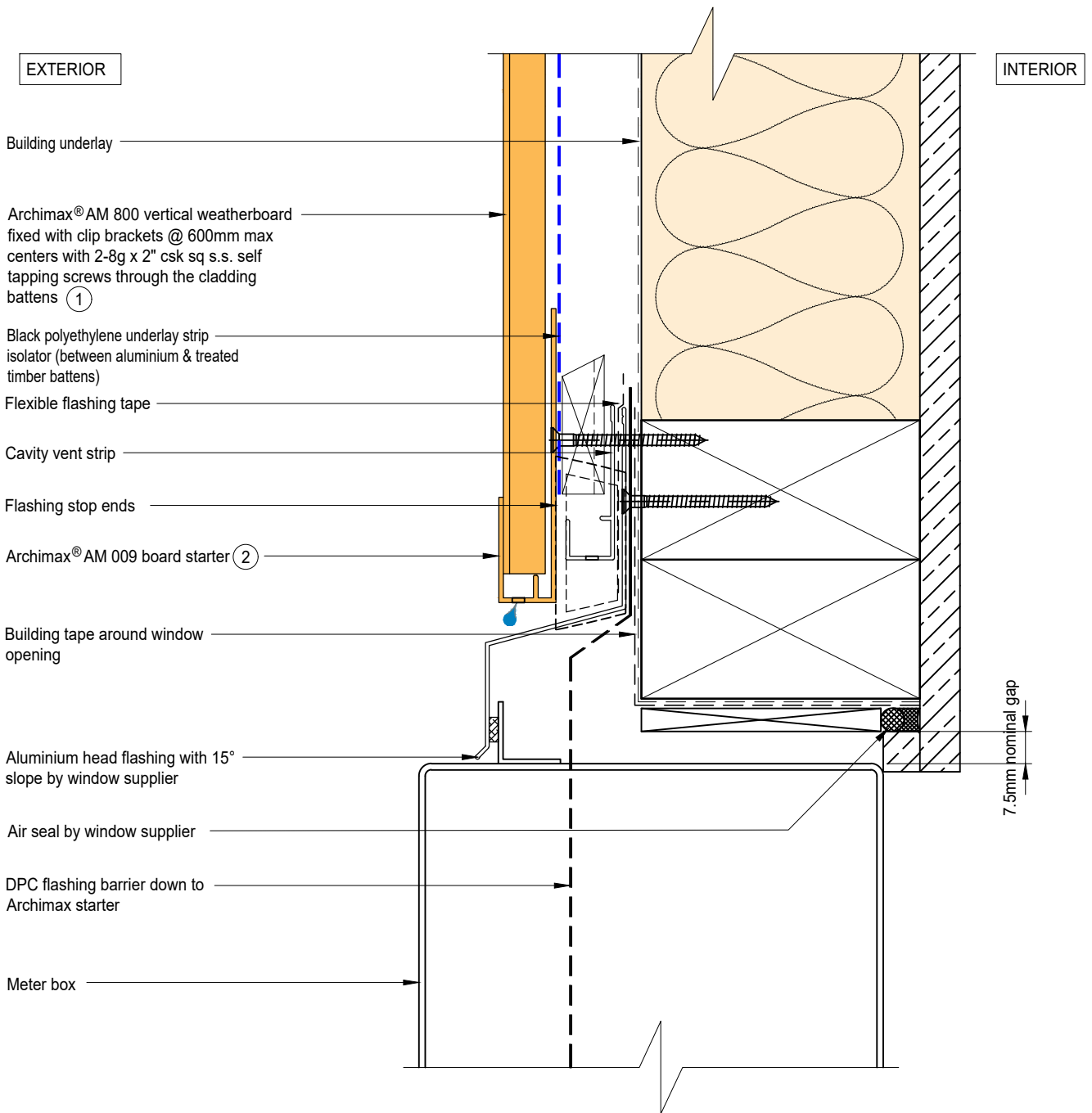
 <p>ARCHIMAX ALUMINIUM CLADDING SYSTEM <i>Creating more durable building envelopes</i> www.archimax.co.nz</p>	System AM800 - VERTICAL WEATHERBOARD	Detail ARCHIMAX® INTERNAL CORNER JUNCTION DETAIL	Drawing No. Rev. AM-BJ-V13 D
	<small>This drawing is the copyright of Archimax Limited. Modification of details for job specification requirements must be approved by Archimax Ltd. The building designer is ultimately responsible to ensure all building work is designed and constructed according to building code requirements, best code of practice industry guidelines. All components must be supplied by Archimax. Archimax reserves the right to alter or upgrade details at any time without prior notice.</small>		Scale Date 1:2 NOV23



 <p>ARCHIMAX ALUMINIUM CLADDING SYSTEM <i>Creating more durable building envelopes</i> www.archimax.co.nz</p>	System AM800 - VERTICAL WEATHERBOARD	Detail ARCHIMAX® PARAPET WITH CAVITY DETAIL	Drawing No. Rev. AM-PAR-V14 D			
	<p>This drawing is the copyright of Archimax Limited. Modification of details for job specification requirements must be approved by Archimax Ltd. The building designer is ultimately responsible to ensure all building work is designed and constructed according to building code requirements, best code of practice industry guidelines. All components must be supplied by Archimax. Archimax reserves the right to alter or upgrade details at any time without prior notice.</p>		<table border="1"> <tr> <td>Scale</td> <td>Date</td> </tr> <tr> <td>1:2</td> <td>NOV23</td> </tr> </table>	Scale	Date	1:2
Scale	Date					
1:2	NOV23					




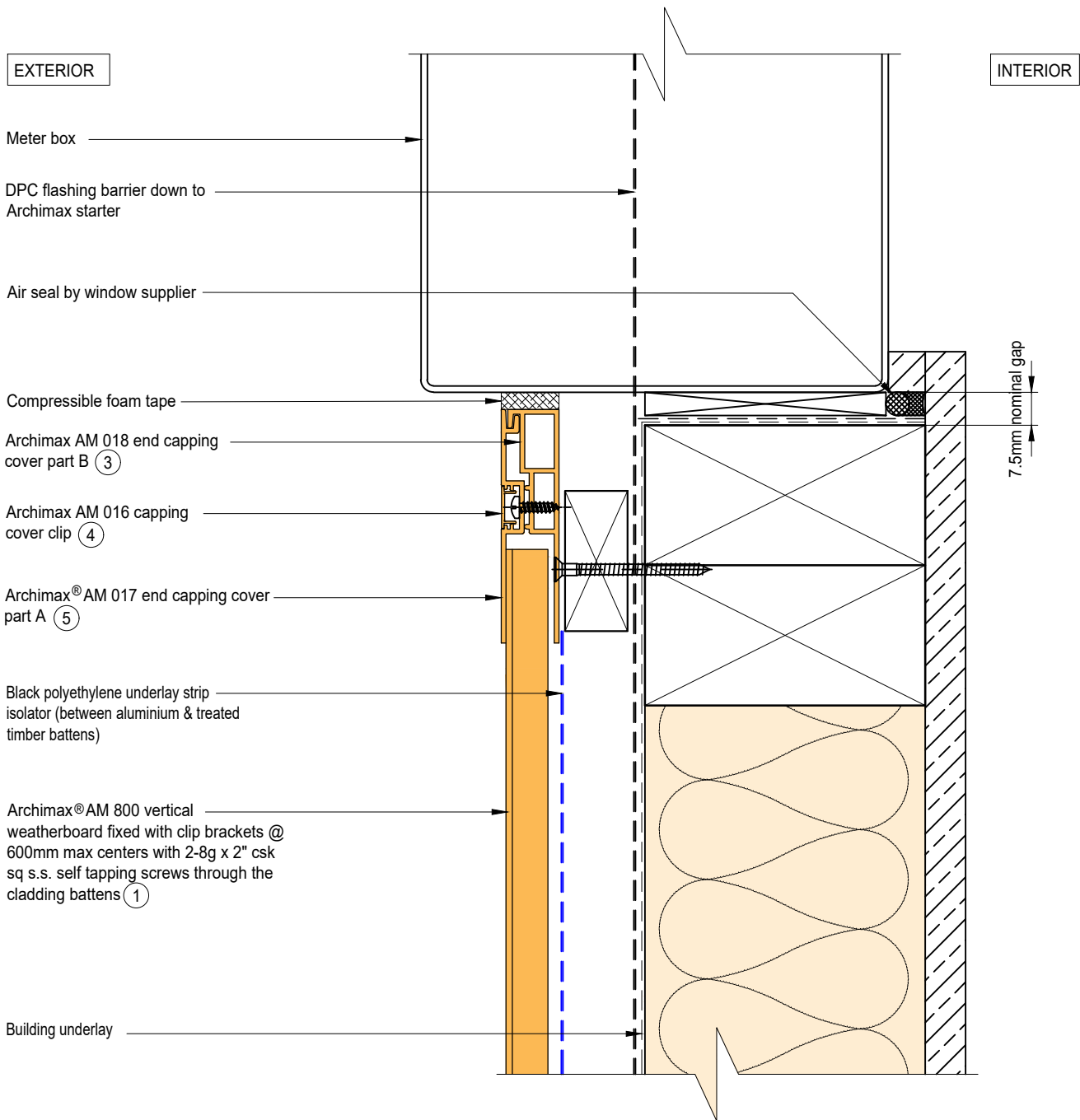
 <p>ARCHIMAX ALUMINIUM CLADDING SYSTEM <i>Creating more durable building envelopes</i> www.archimax.co.nz</p>	<p>System AM800 - VERTICAL WEATHERBOARD</p>	<p>Detail ARCHIMAX® LOWER ROOF WALL JUNCTION DETAIL</p>	<p>Drawing No. Rev. AM-RW-V15 D</p>
	<p>This drawing is the copyright of Archimax Limited. Modification of details for job specification requirements must be approved by Archimax Ltd. The building designer is ultimately responsible to ensure all building work is designed and constructed according to building code requirements, best code of practice industry guidelines. All components must be supplied by Archimax. Archimax reserves the right to alter or upgrade details at any time without prior notice.</p>		<p>Scale Date 1:2 NOV23</p>




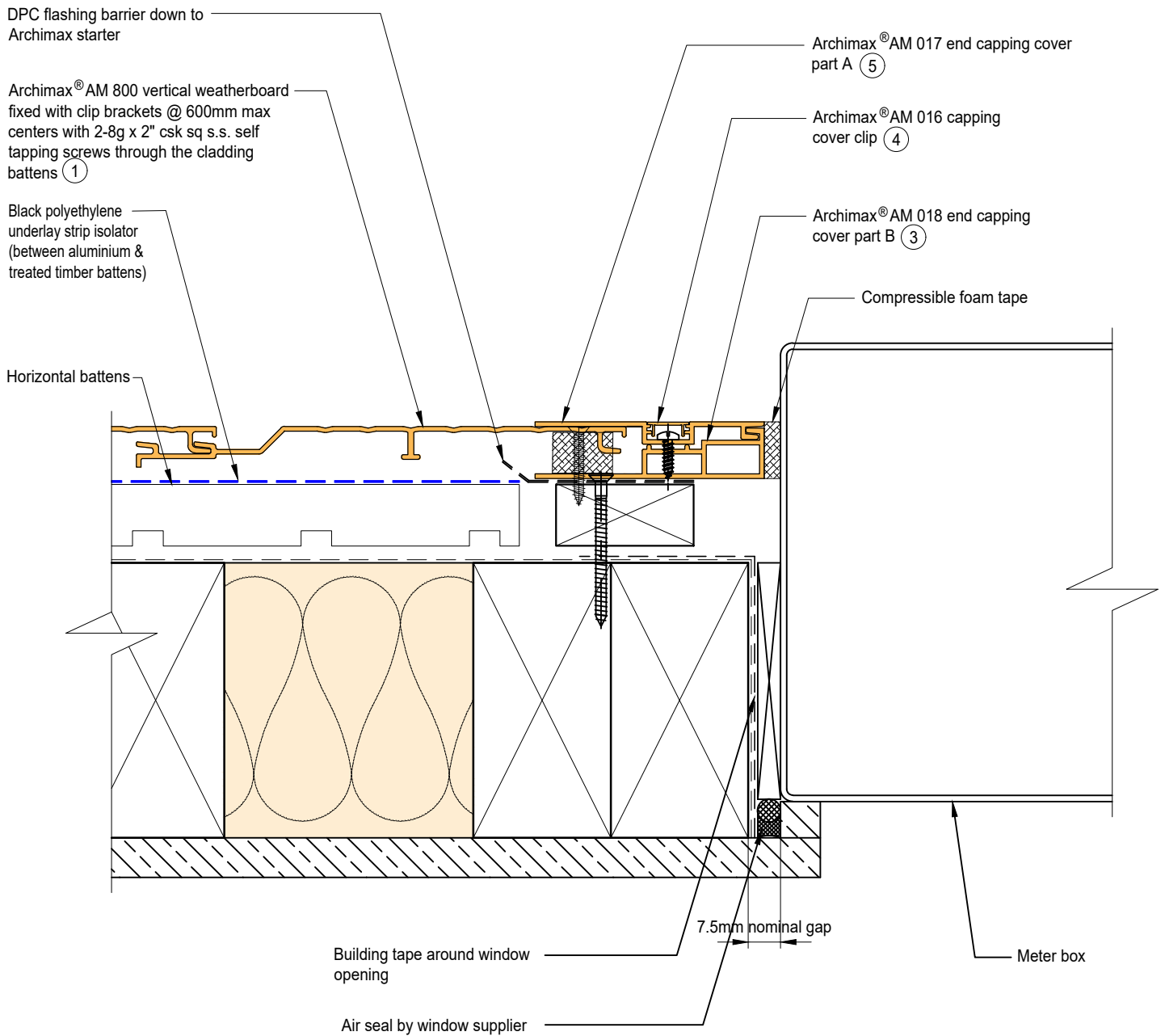
NOTE:
STOP ENDS TO BE INSTALLED AT FLASHING ENDS




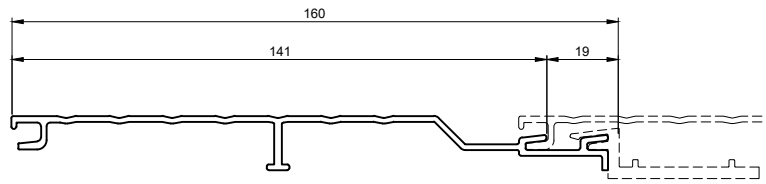
 <p>ARCHIMAX ALUMINIUM CLADDING SYSTEM <i>Creating more durable building envelopes</i> www.archimax.co.nz</p>	System AM800 - VERTICAL WEATHERBOARD	Detail ARCHIMAX® METER BOX HEAD DETAIL	Drawing No. Rev. AM-MB-V16 D			
	<p>This drawing is the copyright of Archimax Limited. Modification of details for job specification requirements must be approved by Archimax Ltd. The building designer is ultimately responsible to ensure all building work is designed and constructed according to building code requirements, best code of practice industry guidelines. All components must be supplied by Archimax. Archimax reserves the right to alter or upgrade details at any time without prior notice.</p>		<table border="1"> <tr> <td>Scale</td> <td>Date</td> </tr> <tr> <td>1:2</td> <td>NOV23</td> </tr> </table>	Scale	Date	1:2
Scale	Date					
1:2	NOV23					



 <p> ARCHIMAX ALUMINIUM CLADDING SYSTEM <i>Creating more durable building envelopes</i> www.archimax.co.nz </p>	System AM800 - VERTICAL WEATHERBOARD	Detail ARCHIMAX® METER BOX SILL DETAIL	Drawing No. Rev. AM-MB-V17 D
	<small> This drawing is the copyright of Archimax Limited. Modification of details for job specification requirements must be approved by Archimax Ltd. The building designer is ultimately responsible to ensure all building work is designed and constructed according to building code requirements, best code of practice industry guidelines. All components must be supplied by Archimax. Archimax reserves the right to alter or upgrade details at any time without prior notice. </small>		Scale Date 1:2 NOV23



 <p>ARCHIMAX ALUMINIUM CLADDING SYSTEM <i>Creating more durable building envelopes</i> www.archimax.co.nz</p>	<p>System AM800 - VERTICAL WEATHERBOARD</p>	<p>Detail ARCHIMAX® METER BOX JAMB DETAIL</p>	<p>Drawing No. Rev. AM-MB-V18 D</p>
	<p>This drawing is the copyright of Archimax Limited. Modification of details for job specification requirements must be approved by Archimax Ltd. The building designer is ultimately responsible to ensure all building work is designed and constructed according to building code requirements, best code of practice industry guidelines. All components must be supplied by Archimax. Archimax reserves the right to alter or upgrade details at any time without prior notice.</p>		<p>Scale Date 1:2 NOV23</p>



①

AM 800 Archimax Horizontal / Vertical Weatherboard

<p>②</p>	<p>③</p>	<p>④</p>	<p>⑤</p>	<p>⑥</p>
<p>AM 009 Board Starter</p>	<p>AM 018 End Capping Part B</p>	<p>AM 016 Jointer / Jamb / Sill Capping Cover Clip</p>	<p>AM 017 End Capping Part A</p>	<p>AM 029 Clip Bracket</p>
<p>⑨</p>	<p>⑧</p>	<p>⑨</p>	<p>⑪</p>	
<p>AM 019 Internal/External Corner Part A</p>	<p>AM 023 Internal Corner Cover Clip</p>	<p>AM 022 Internal Corner Part B</p>	<p>AM 020 External Cover Cover Clip</p>	