

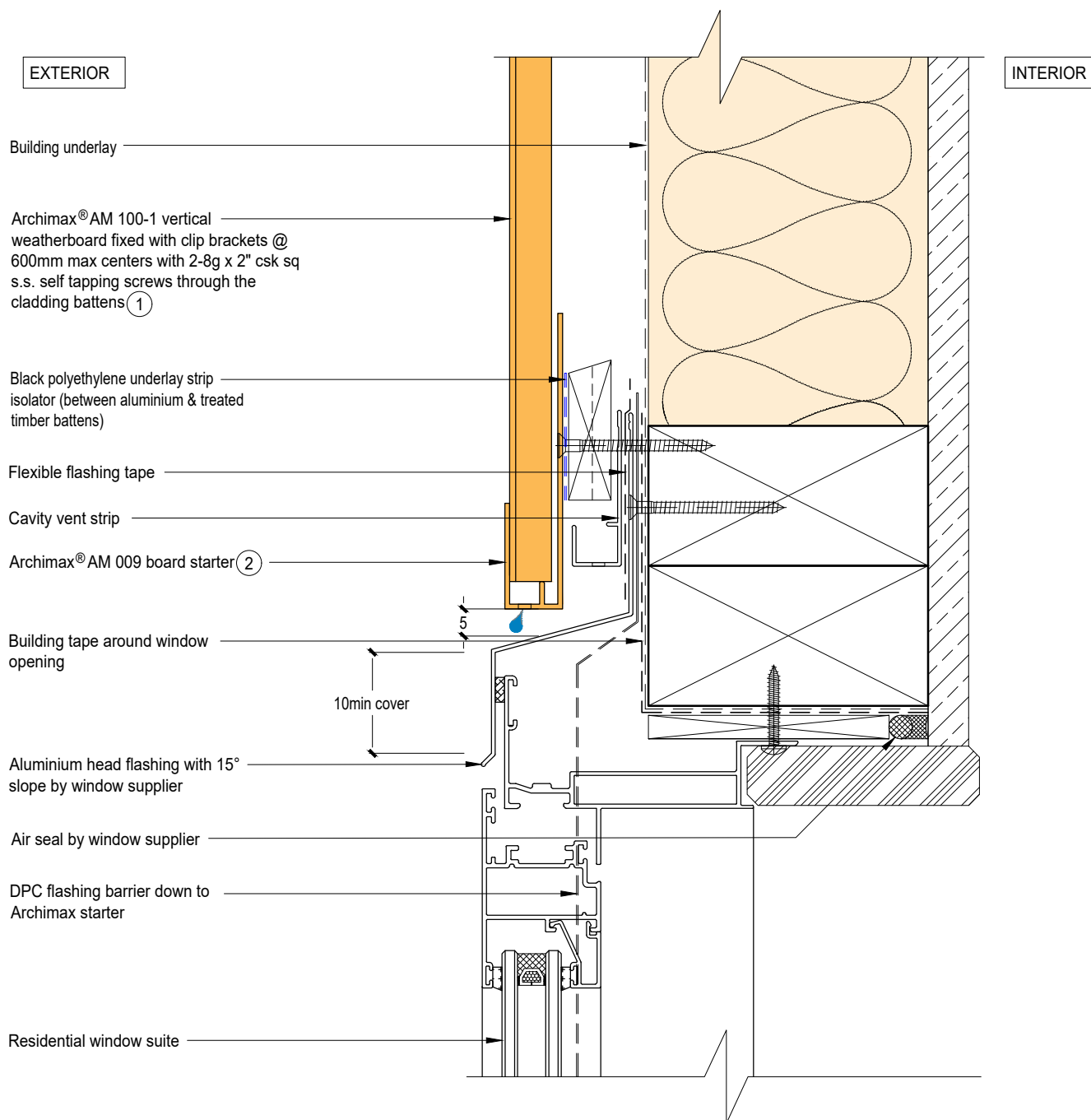


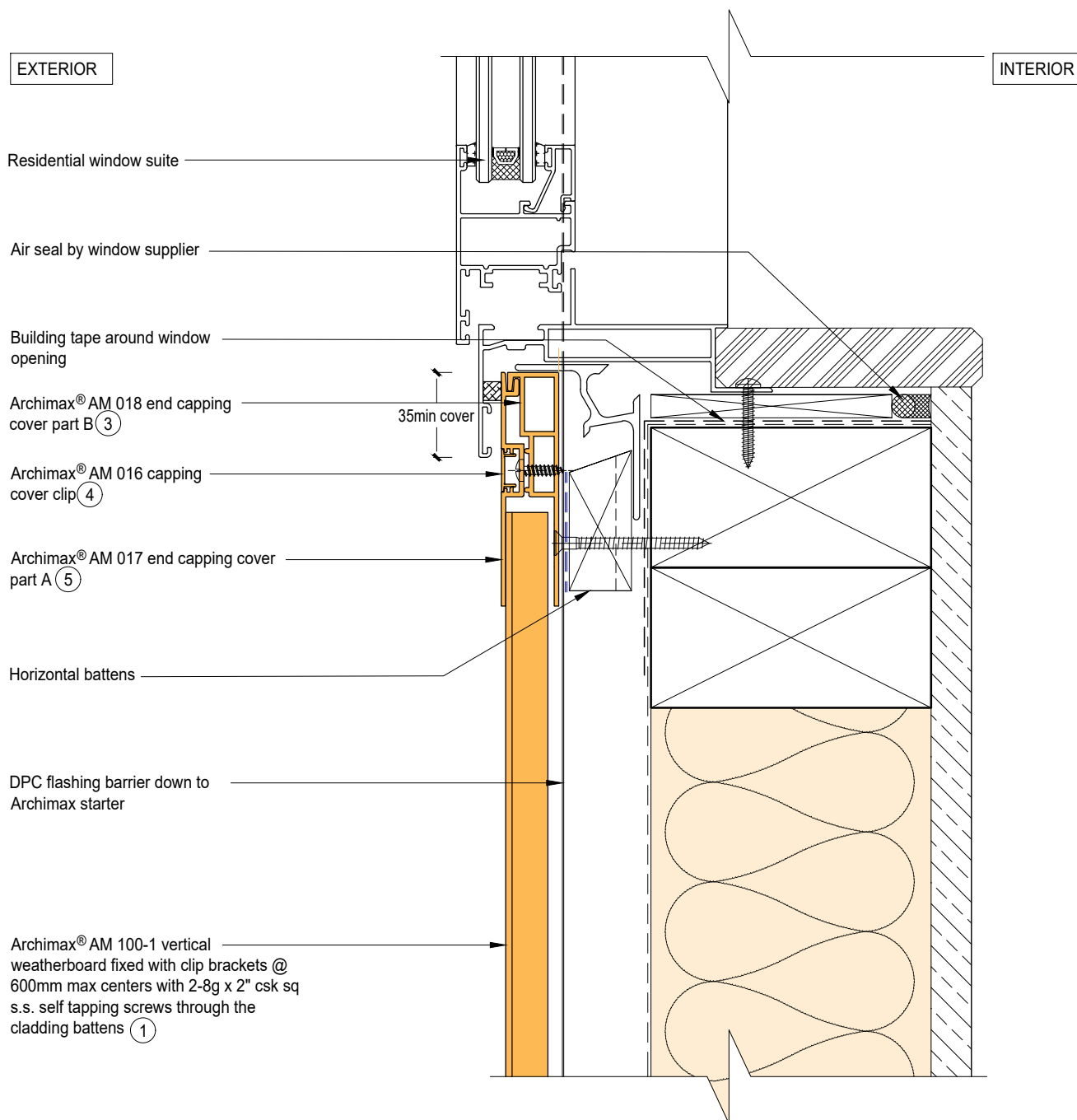
Archimax® Aluminium Cladding System
AM100 -1Vertical Profile – Installation details

Drawing No.	Rev.	Description
AM-WH-H1	B	Archimax® Window Head Detail
AM-WS-H2	B	Archimax® Window Sill Detail
AM-WJ-H3	B	Archimax® Window Jamb Detail
AM-EXT-H4	B	Archimax® External Corner Detail
AM-INT-H5	B	Archimax® Internal Corner Detail
AM-CBS-H6.1	B	Archimax® Concrete Floor Board Starter Detail - Timber
AM-CBS-H6.2	B	Archimax® Concrete Floor Board Starter Detail - Fire Wall
AM-HJ-H7	B	Archimax® Horizontal Joint Detail
AM-DJ-H8	B	Archimax® Deck Junction Detail
AM-PP-H9a	B	Archimax® Pipe Penetration - Plan View Detail
AM-PP-H9b	B	Archimax® Pipe Penetration - Section View Detail
AM-SO-H10	B	Archimax® Soffit Detail
AM-SO-H11.1	B	Archimax® Facia, Soffit & Wall Detail
AM-SO-H11.2	B	Archimax® Facia, Soffit & Wall (90° Soffit / Wall) Detail
AM-NSO-H12	B	Archimax® Non Soffit Detail
AM-BJ-H13	B	Archimax® Internal Corner Junction Detail
AM-PAR-H14	B	Archimax® Parapet with Cavity Detail
AM-RW-H15	B	Archimax® Lower Roof Wall Junction Detail
AM-MB-H16	B	Archimax® Meter Box Head Detail
AM-MB-H17	B	Archimax® Meter Box Sill Detail
AM-MB-H18	B	Archimax® Meter Box Jamb Detail

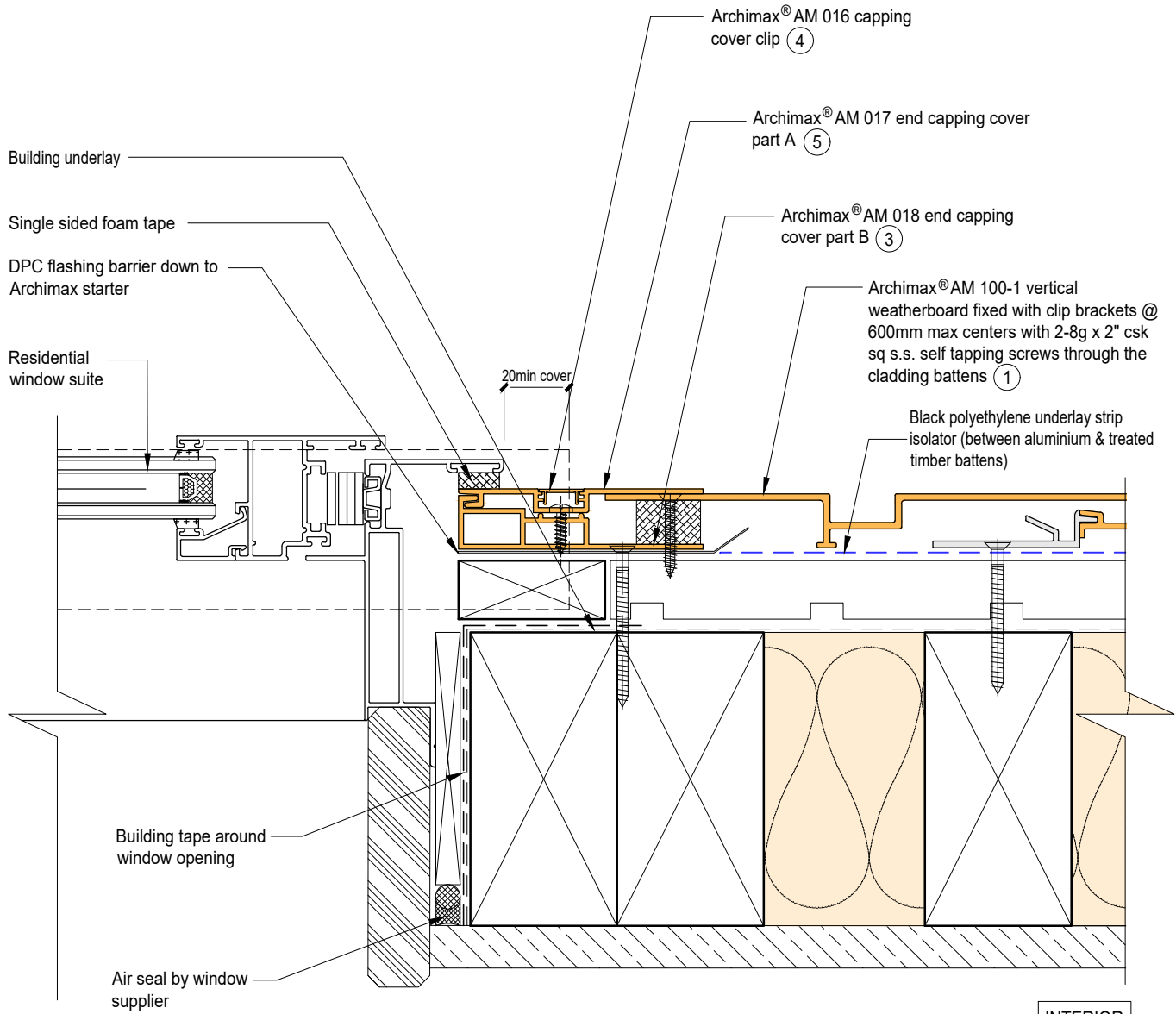


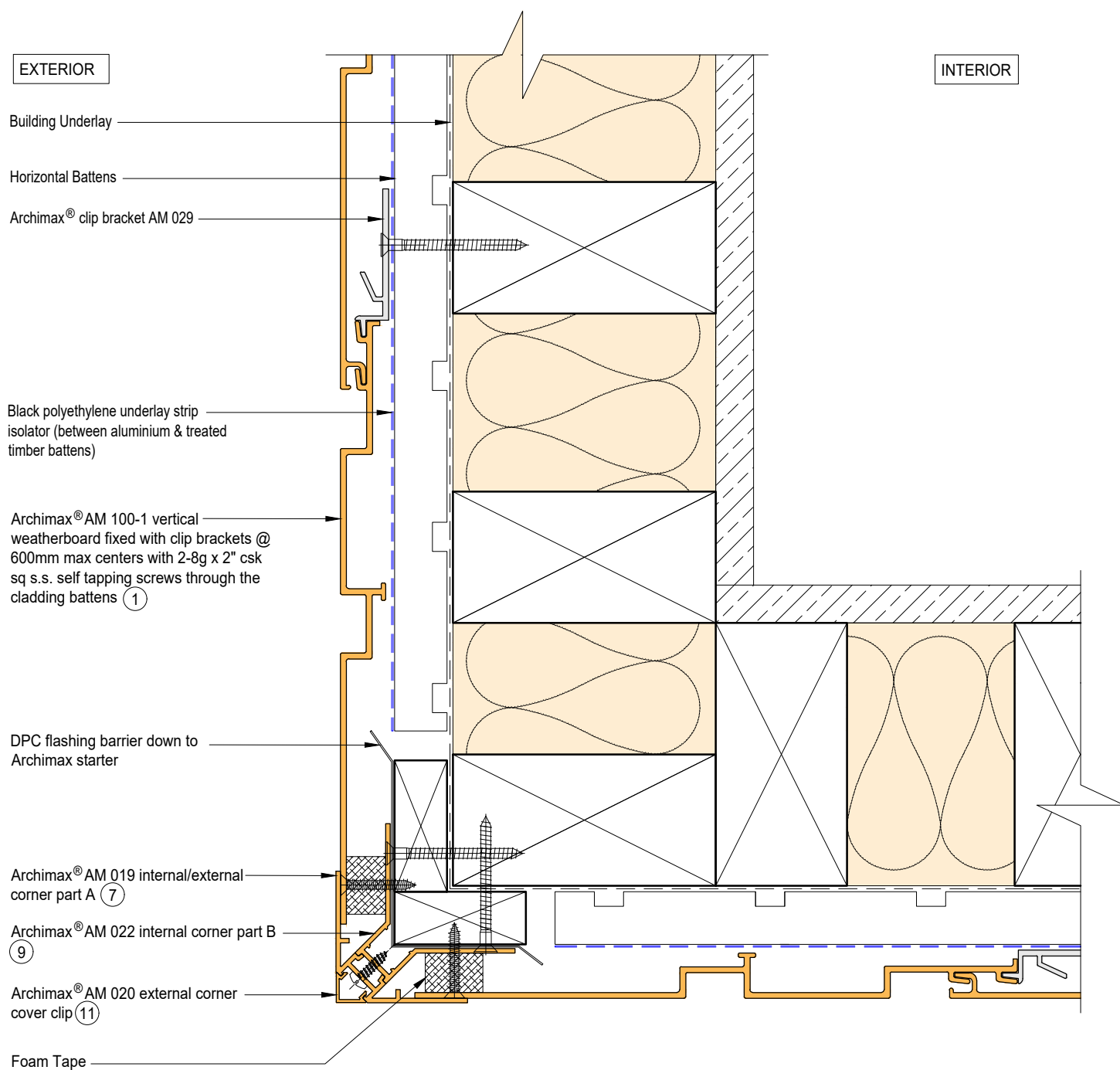
AM100-1
coverage: 200mm

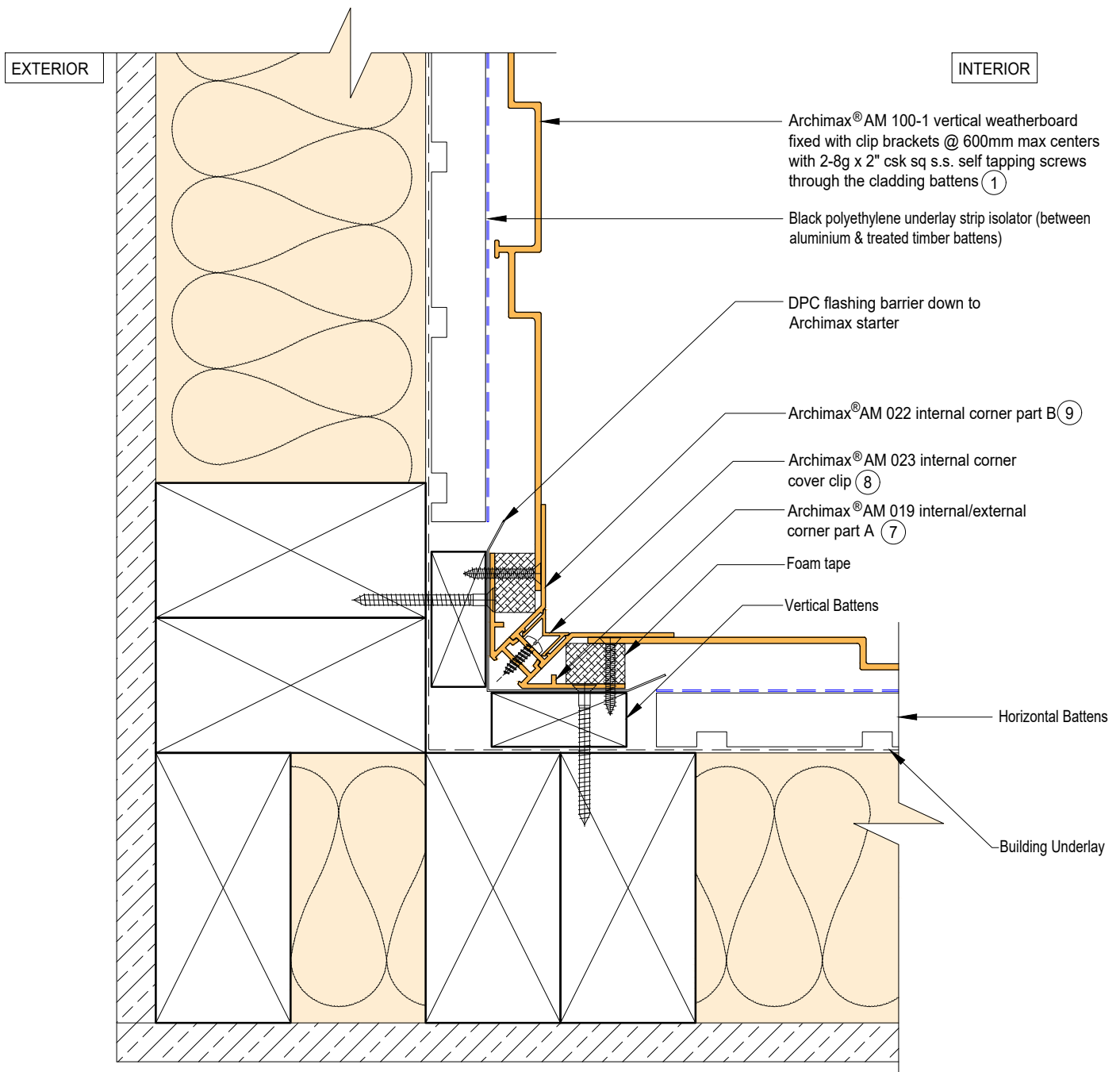


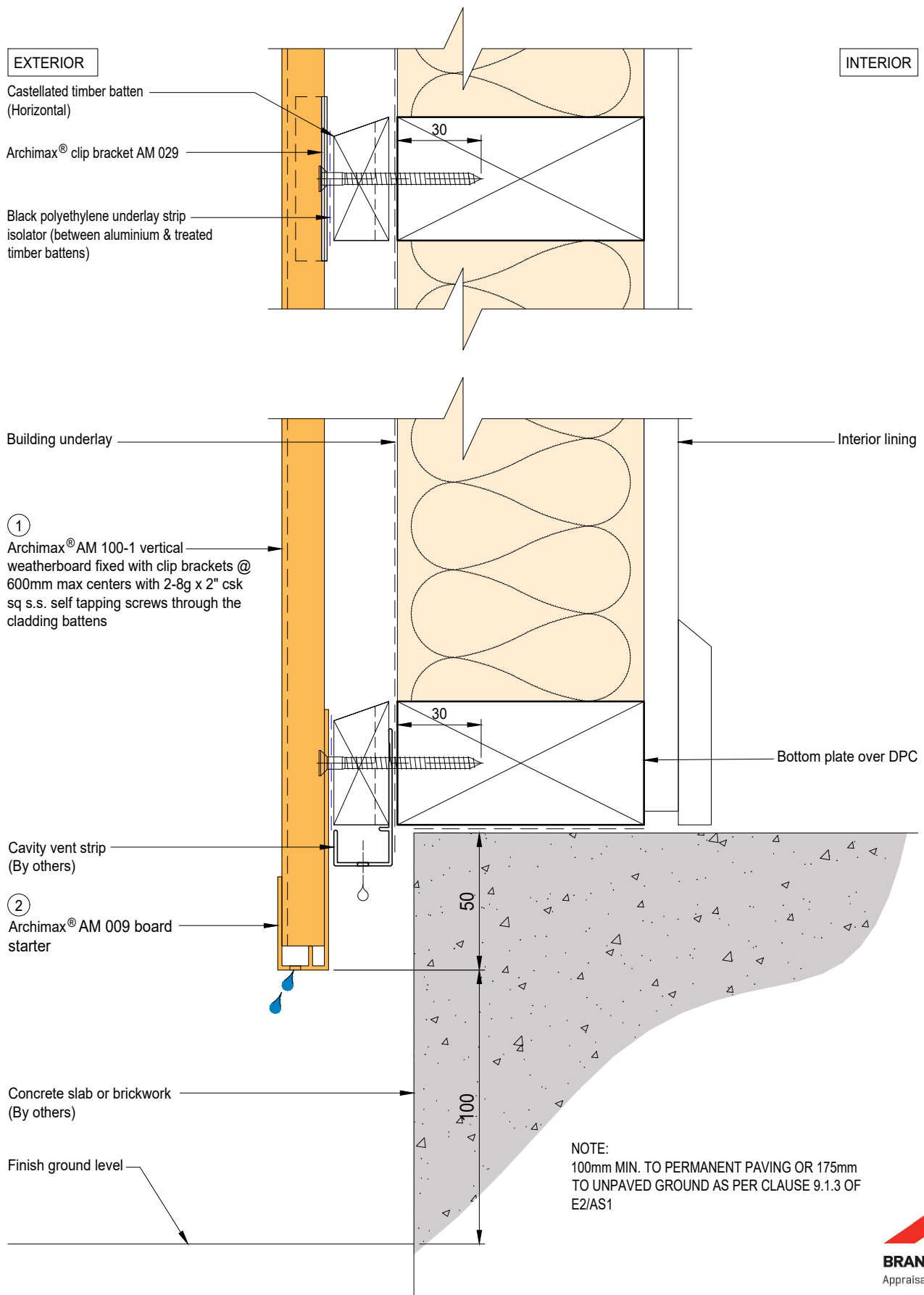


EXTERIOR









EXTERIOR

INTERIOR

Archimax® Aluminium Batten
AMB 01 (Horizontal)

Archimax® clip bracket AM 029

Rigid air barrier
(FRR)

①
Archimax® AM 100-1 vertical
weatherboard fixed with clip brackets @
600mm max centers with 2-8g x 2" csk
sq s.s. self tapping screws through the
cladding battens

Cavity vent strip
(By others)

②
Archimax® AM 009 board
starter

Concrete slab or brickwork
(By others)

Finish ground level

Interior lining

Bottom plate over DPC

NOTE:
100mm MIN. TO PERMANENT PAVING OR 175mm
TO UNPAVED GROUND AS PER CLAUSE 9.1.3 OF
E2/AS1

BRANZ Appraised
Appraisal No. 1173 [2021]

ARCHIMAX
ALUMINIUM CLADDING SYSTEM
Creating more durable building envelopes
www.archimax.co.nz

System
AM100-1-VERTICAL WEATHERBOARD

Detail
ARCHIMAX® CONCRETE FLOOR
BOARD STARTER DETAIL-FIRE WALL

Drawing No. Rev.
AM-CBS-V6.2 B

This drawing is the copyright of Archimax Limited. Modification of details for job specification requirements must be approved by Archimax Ltd. The building designer is ultimately responsible to ensure all building work is designed and constructed according to building code requirements, best code of practice industry guidelines. All components must be supplied by Archimax. Archimax reserves the right to alter or upgrade details at any time without prior notice.

Scale Date
1:2 MAY23

EXTERIOR

INTERIOR

Building underlay

Archimax® AM 100-1 vertical weatherboard fixed with clip brackets @ 600mm max centers with 2-8g x 2" csk sq s.s. self tapping screws through the cladding battens (1)

DPC flashing barrier down to Archimax starter

Black polyethylene underlay strip isolator (between aluminium & treated timber battens)

Flexible flashing tape

Cavity vent strip

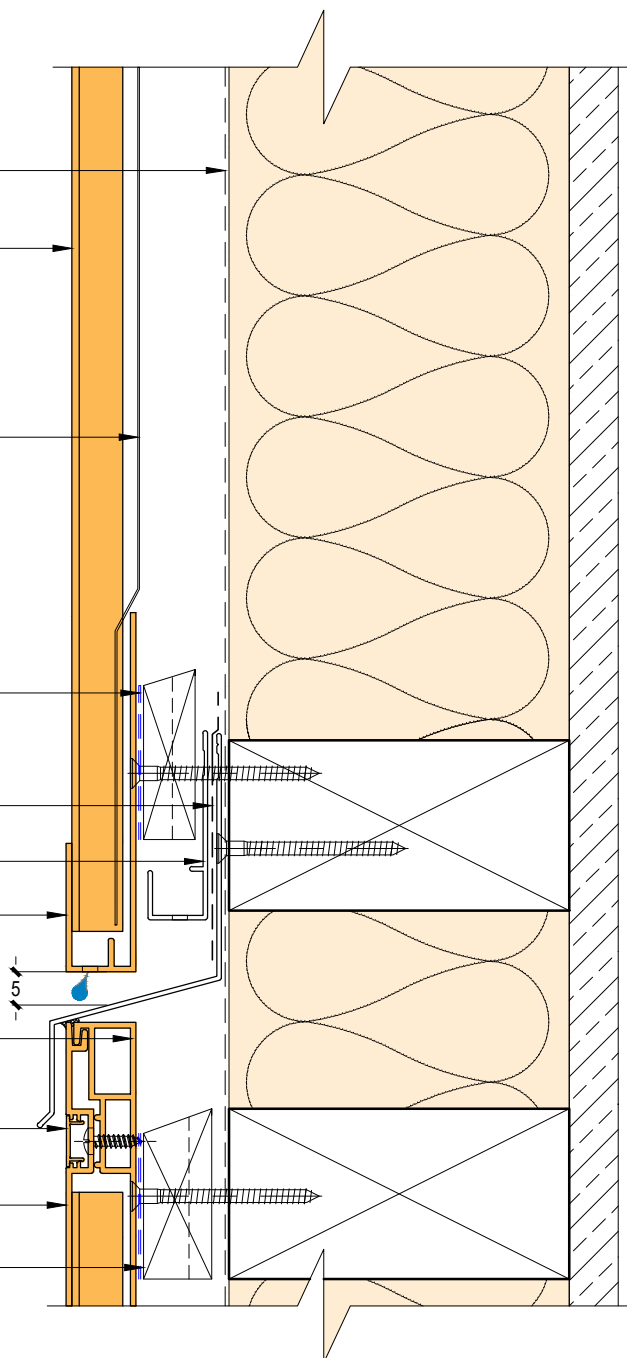
Archimax AM 009 board starter (2)

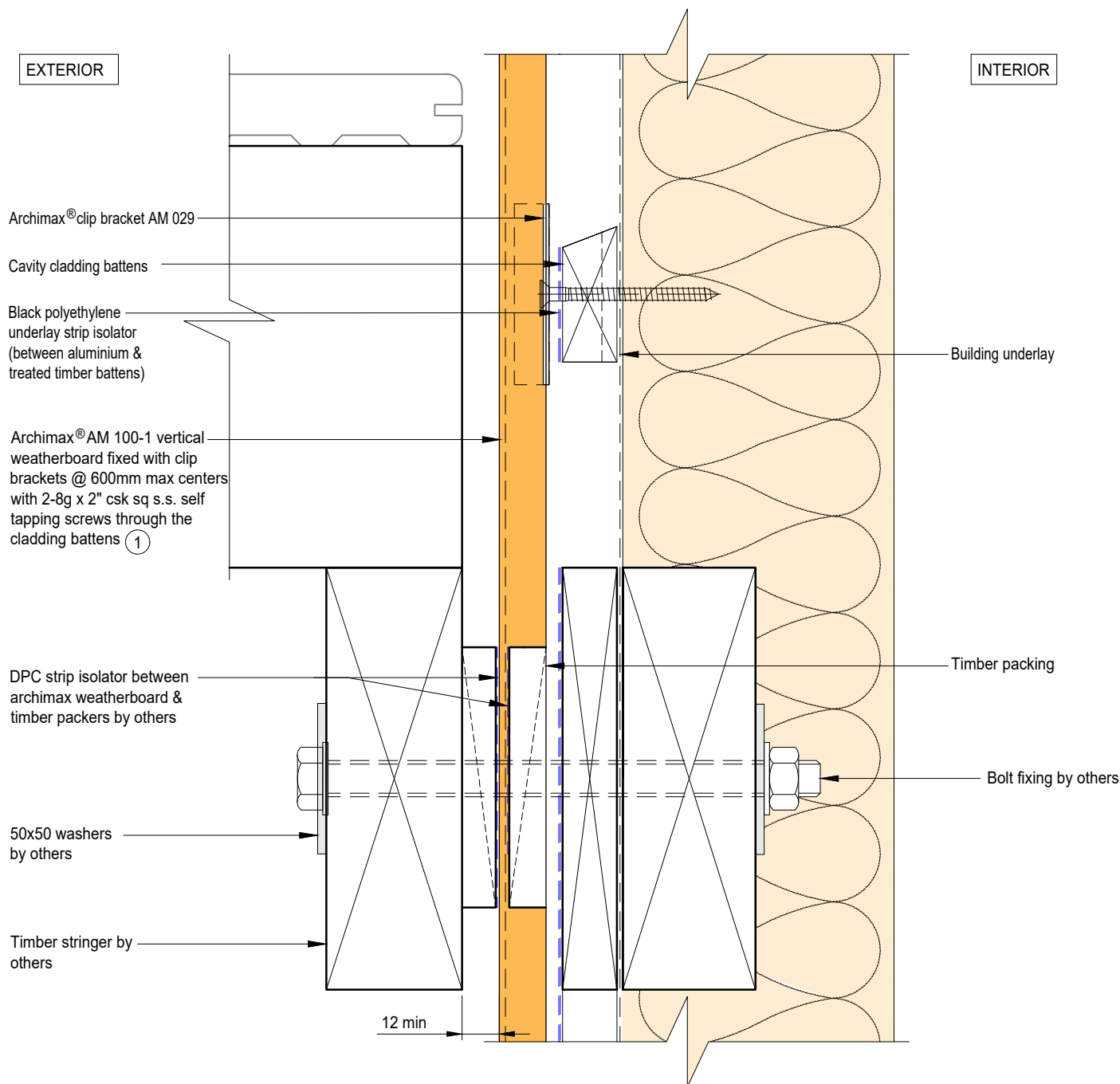
Archimax® AM 018 end capping cover part B (3)

Archimax® AM 016 capping cover clip (4)

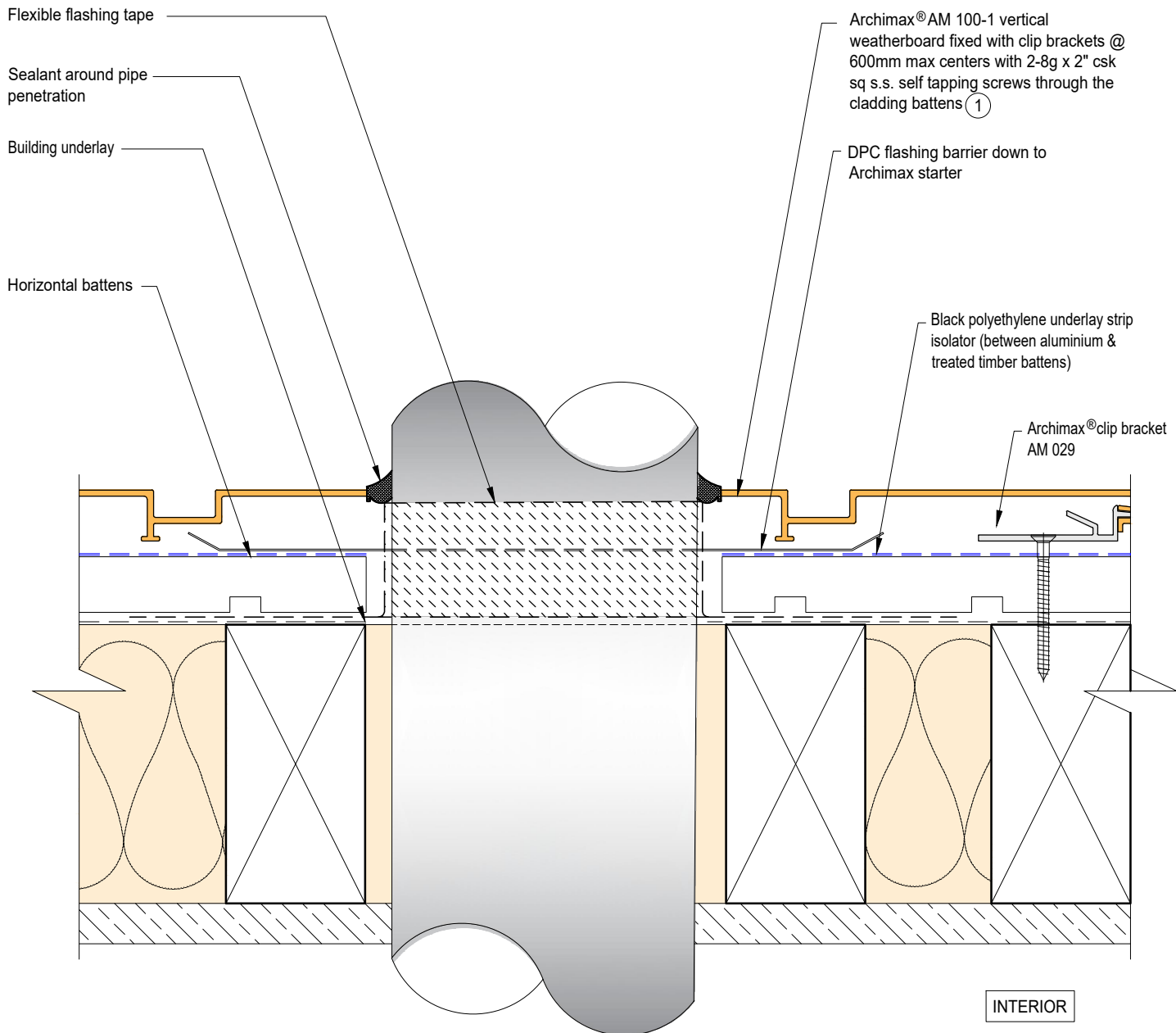
Archimax® AM 017 end capping cover part A (5)

Horizontal battens





EXTERIOR



EXTERIOR

INTERIOR

Archimax® AM 100-1 vertical weatherboard fixed with clip brackets @ 600mm max centers with 2-8g x 2" csk sq s.s. self tapping screws through the cladding battens ①

Archimax® clip bracket AM 029

Horizontal battens

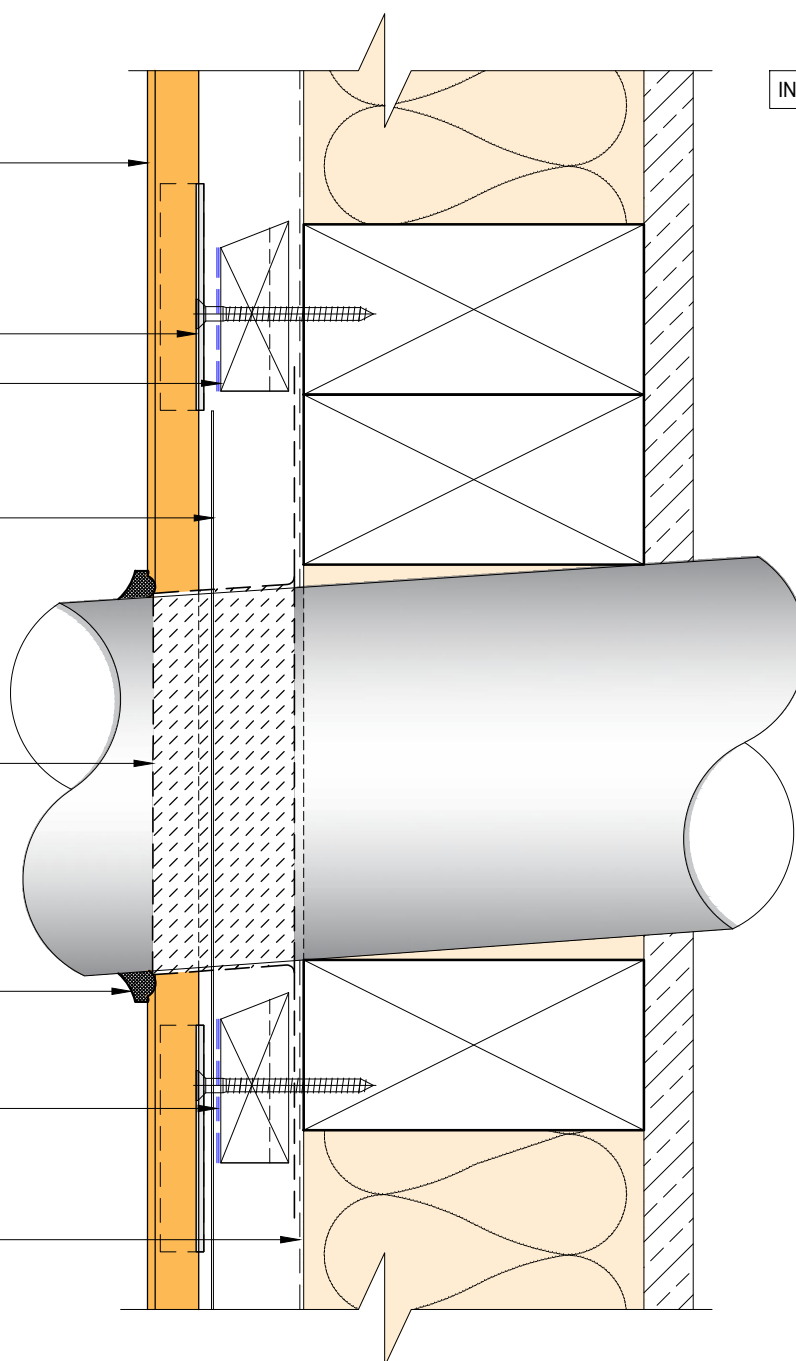
DPC flashing barrier down to Archimax starter

Flexible flashing tape

Sealant around pipe penetration

Black polyethylene underlay strip isolator (between aluminium & treated timber battens)

Building underlay



EXTERIOR

INTERIOR

Compressible foam tape

Archimax® AM 018 end capping
cover part B (3)

Archimax® AM 016 capping
cover clip (4)

Archimax® AM 017 end capping cover
part A (5)

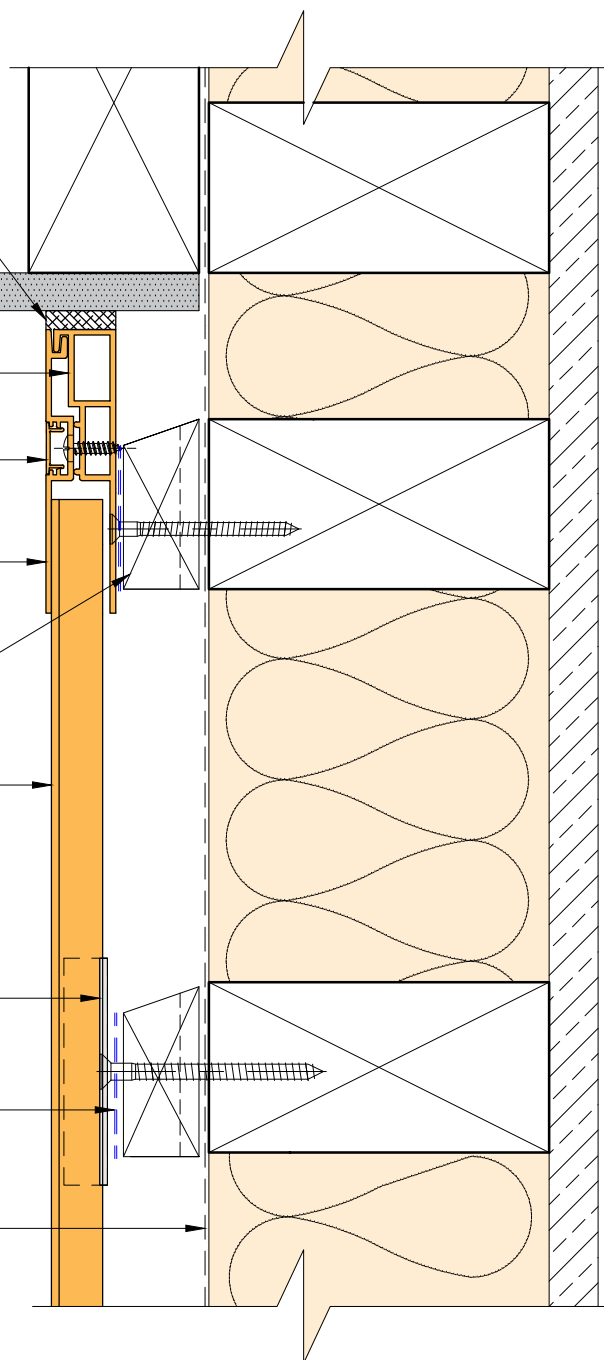
Horizontal battens

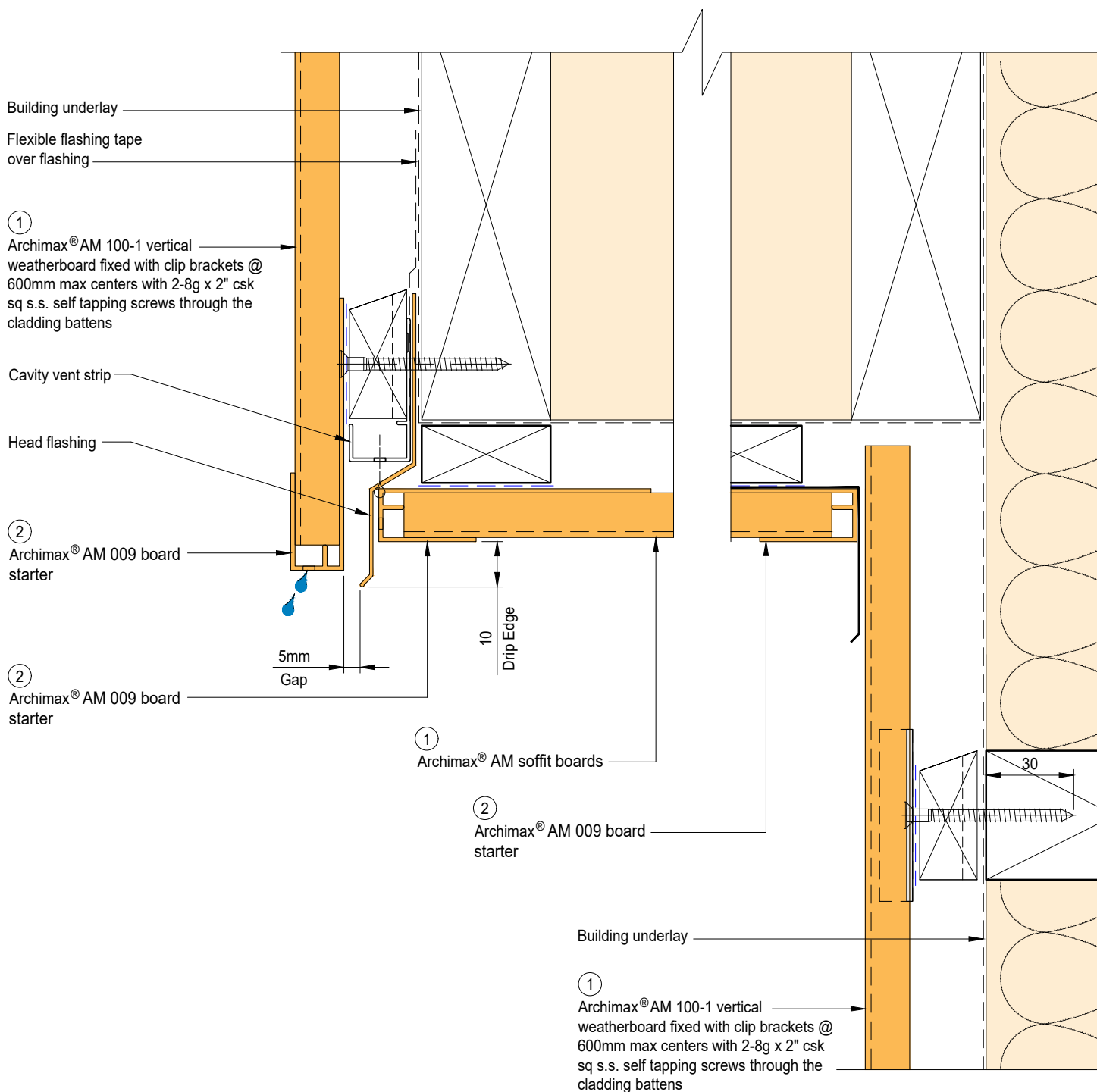
Archimax® AM 100-1 vertical
weatherboard fixed with clip brackets @
600mm max centers with 2-8g x 2" csk sq
s.s. self tapping screws through the
cladding battens (1)

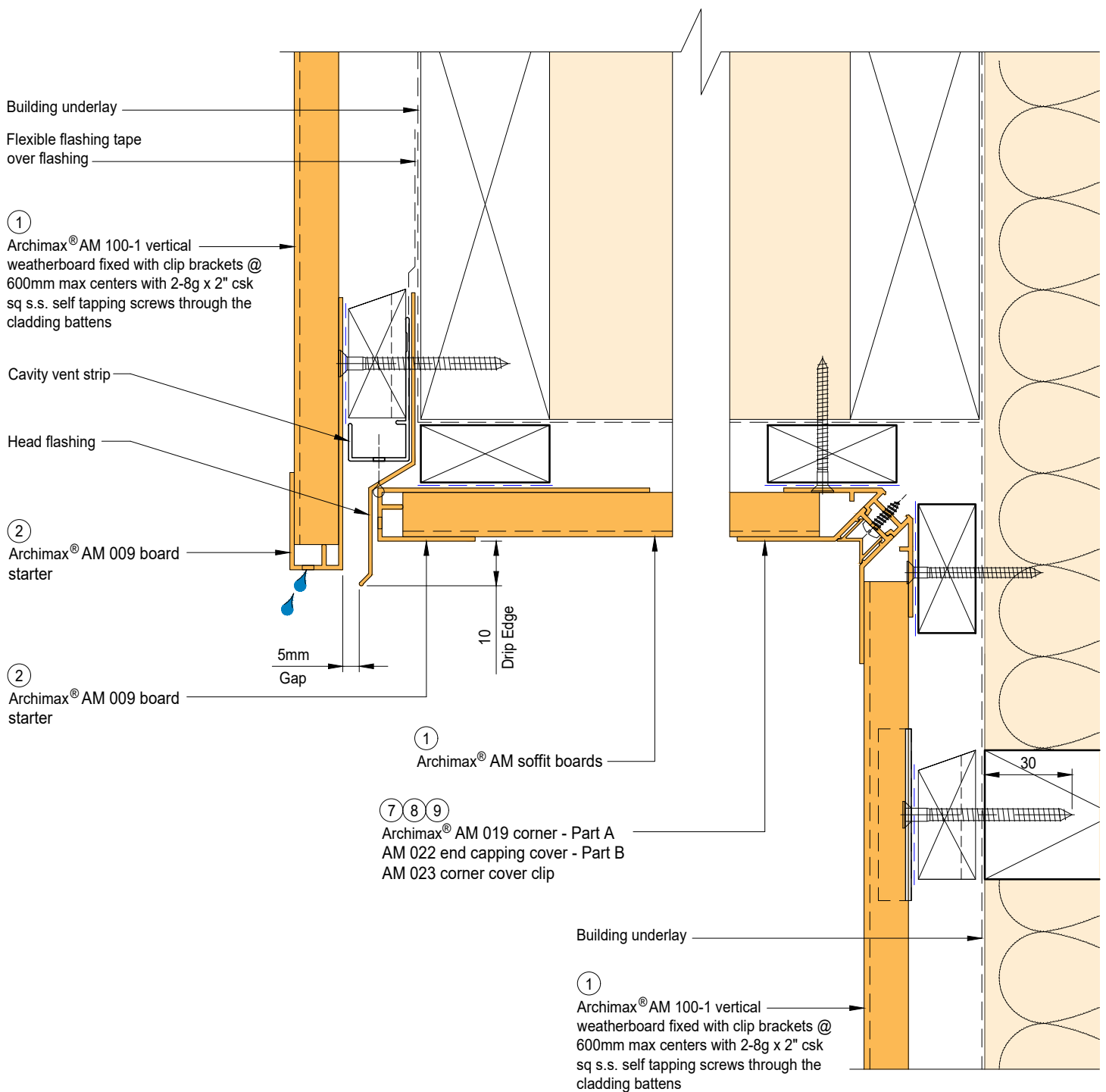
Archimax® clip bracket AM 029

Black polyethylene underlay strip
isolator (between aluminium & treated
timber battens)

Building underlay







EXTERIOR

Selected roofing

Flashing & sealed by others

Archimax® AM 018 end capping cover part B (3)

Archimax® AM 016 capping cover clip (4)

Archimax® AM 017 end capping cover part A (5)

Black polyethylene underlay strip isolator (between aluminium & treated timber battens)

Horizontal battens

Archimax® AM 100-1 vertical weatherboard fixed with clip brackets @ 600mm max centers with 2-8g x 2" csk sq s.s. self tapping screws through the cladding battens (1)

INTERIOR



