

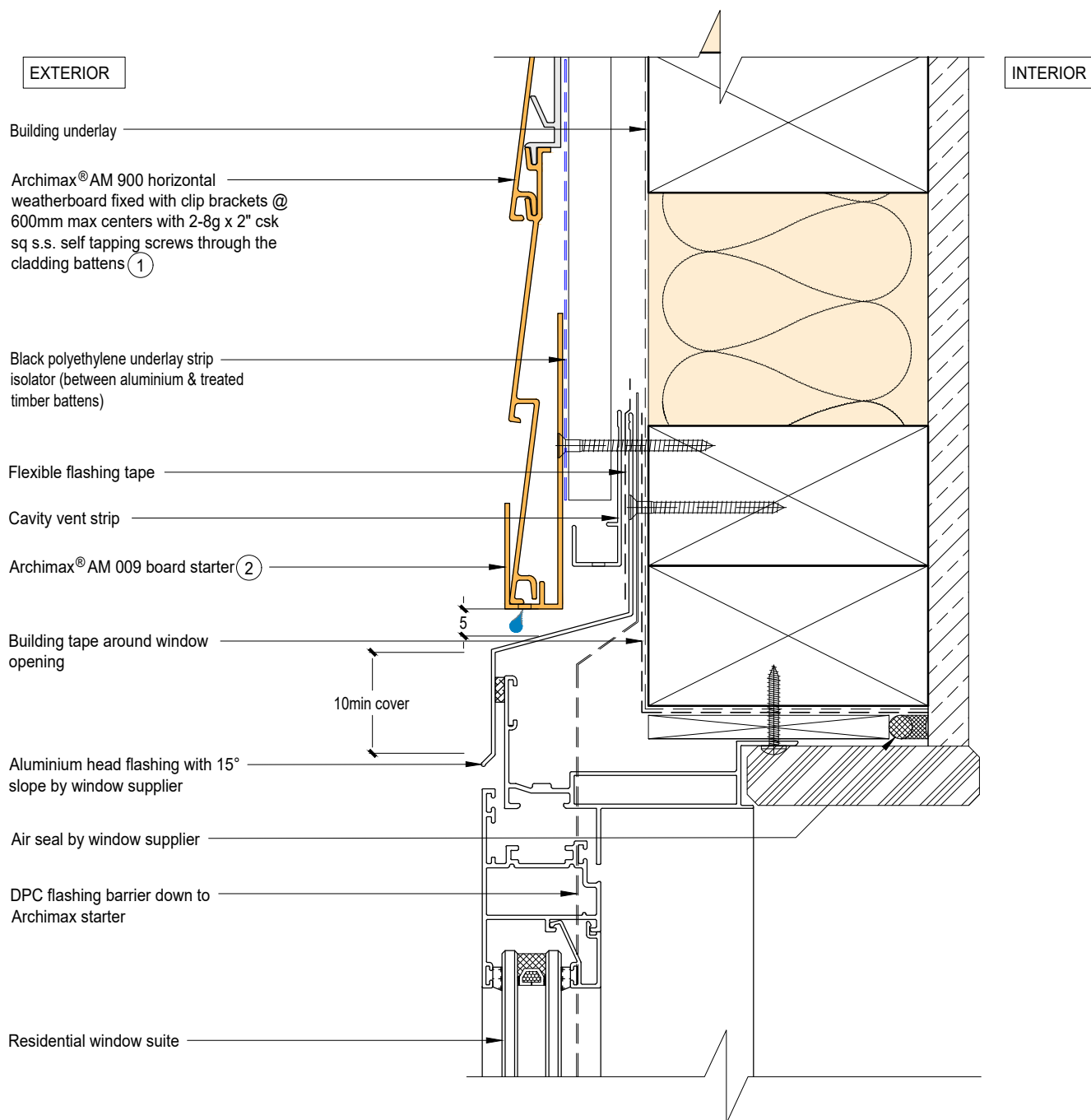


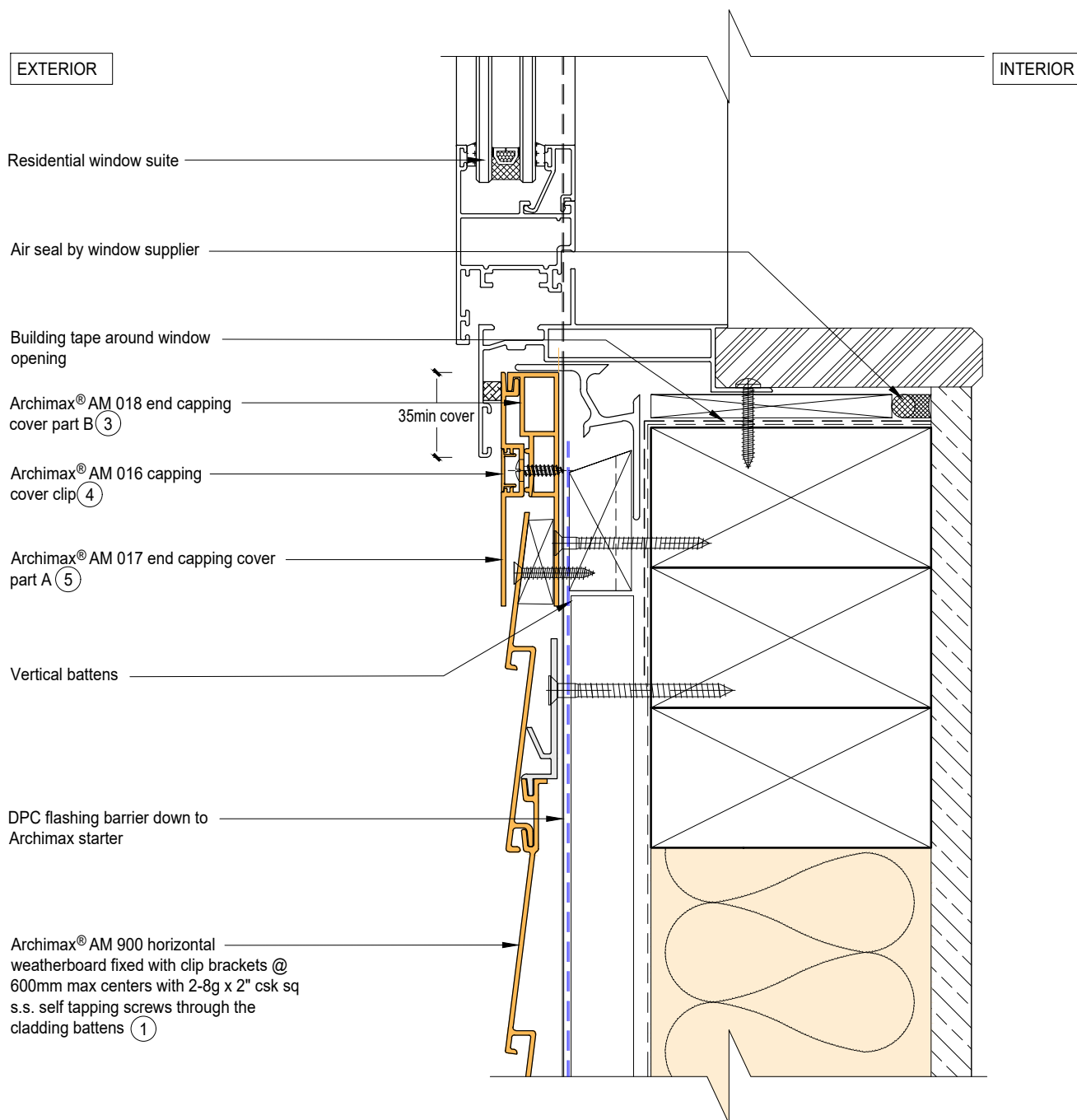
Archimax® Aluminium Cladding System
AM900 Horizontal Profile – Installation details

Drawing No.	Rev.	Description
AM-WH-H1	B	Archimax® Window Head Detail
AM-WS-H2	B	Archimax® Window Sill Detail
AM-WJ-H3	B	Archimax® Window Jamb Detail
AM-EXT-H4	B	Archimax® External Corner Detail
AM-INT-H5	B	Archimax® Internal Corner Detail
AM-CBS-H6.1	B	Archimax® Concrete Floor Board Starter Detail - Timber
AM-CBS-H6.2	B	Archimax® Concrete Floor Board Starter Detail - Fire Wall
AM-HJ-H7	B	Archimax® Horizontal Joint Detail
AM-DJ-H8	B	Archimax® Deck Junction Detail
AM-PP-H9a	B	Archimax® Pipe Penetration - Plan View Detail
AM-PP-H9b	B	Archimax® Pipe Penetration - Section View Detail
AM-SO-H10	B	Archimax® Soffit Detail
AM-SO-H11.1	B	Archimax® Facia, Soffit & Wall Detail
AM-SO-H11.2	B	Archimax® Facia, Soffit & Wall (90° Soffit / Wall) Detail
AM-NSO-H12	B	Archimax® Non Soffit Detail
AM-BJ-H13	B	Archimax® Internal Corner Junction Detail
AM-PAR-H14	B	Archimax® Parapet with Cavity Detail
AM-RW-H15	B	Archimax® Lower Roof Wall Junction Detail
AM-MB-H16	B	Archimax® Meter Box Head Detail
AM-MB-H17	B	Archimax® Meter Box Sill Detail
AM-MB-H18	B	Archimax® Meter Box Jamb Detail
AM-VJ-H19	B	Archimax® Vertical Joint Detail

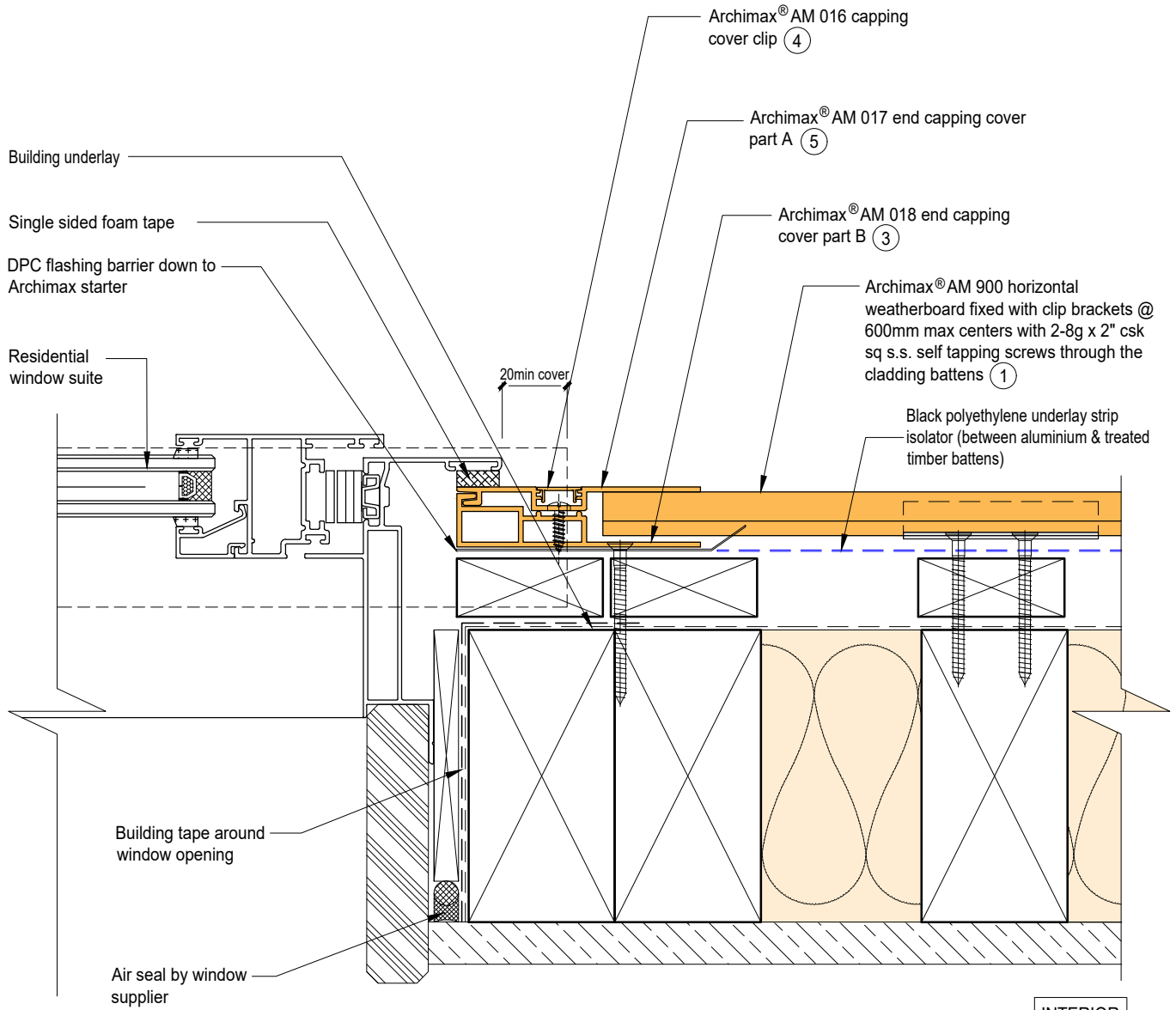


AM900
coverage: 200mm



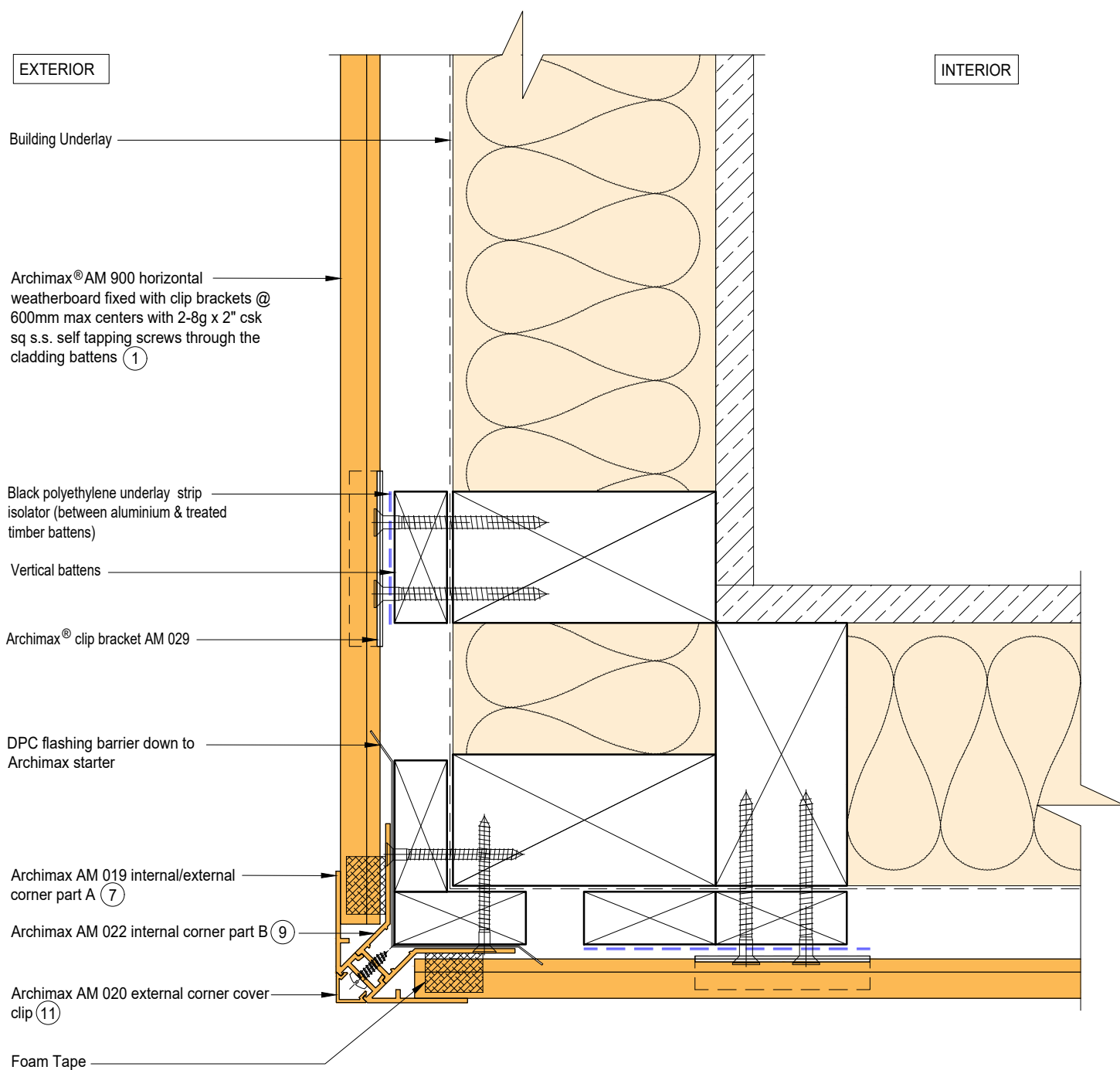


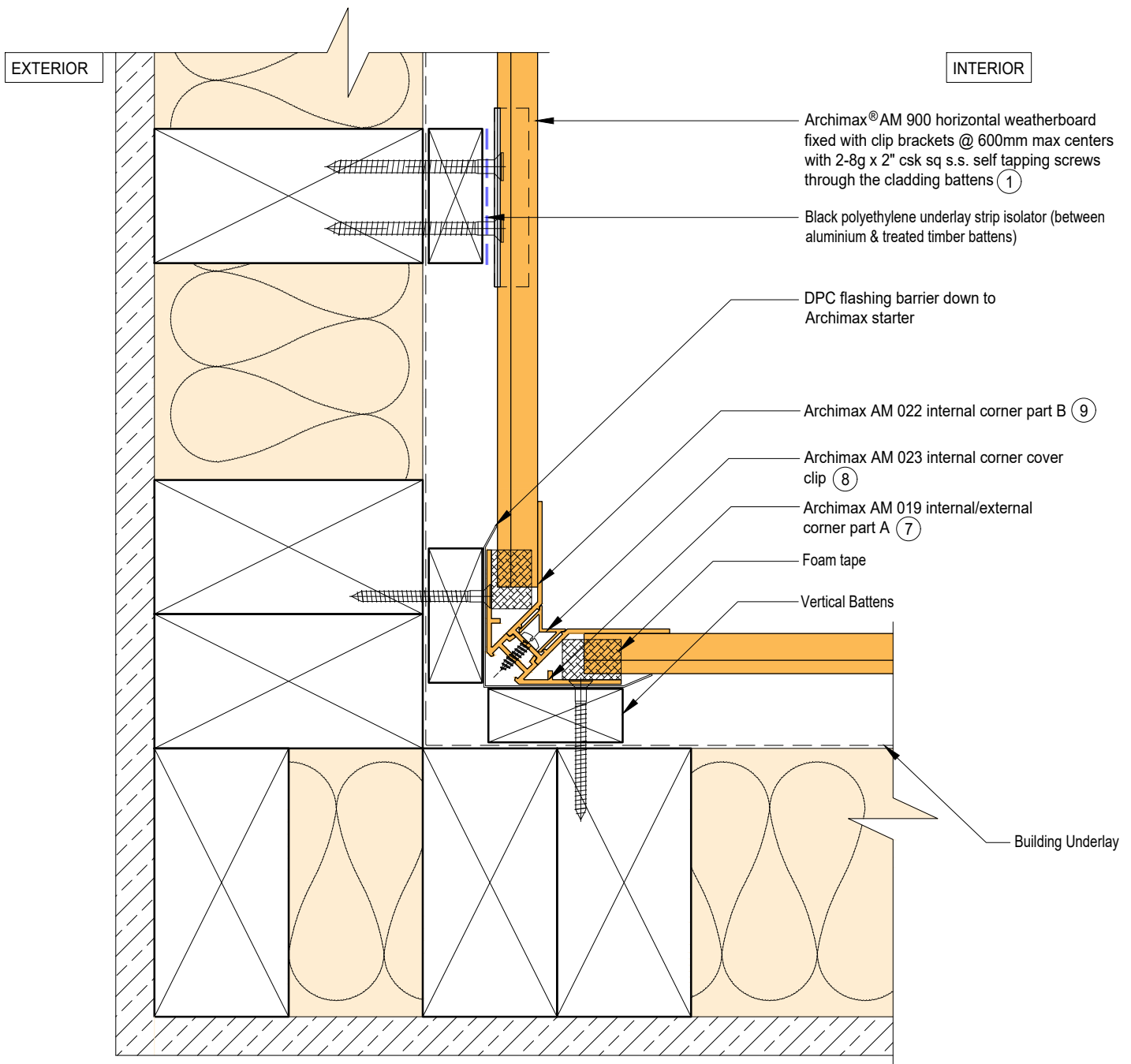
EXTERIOR

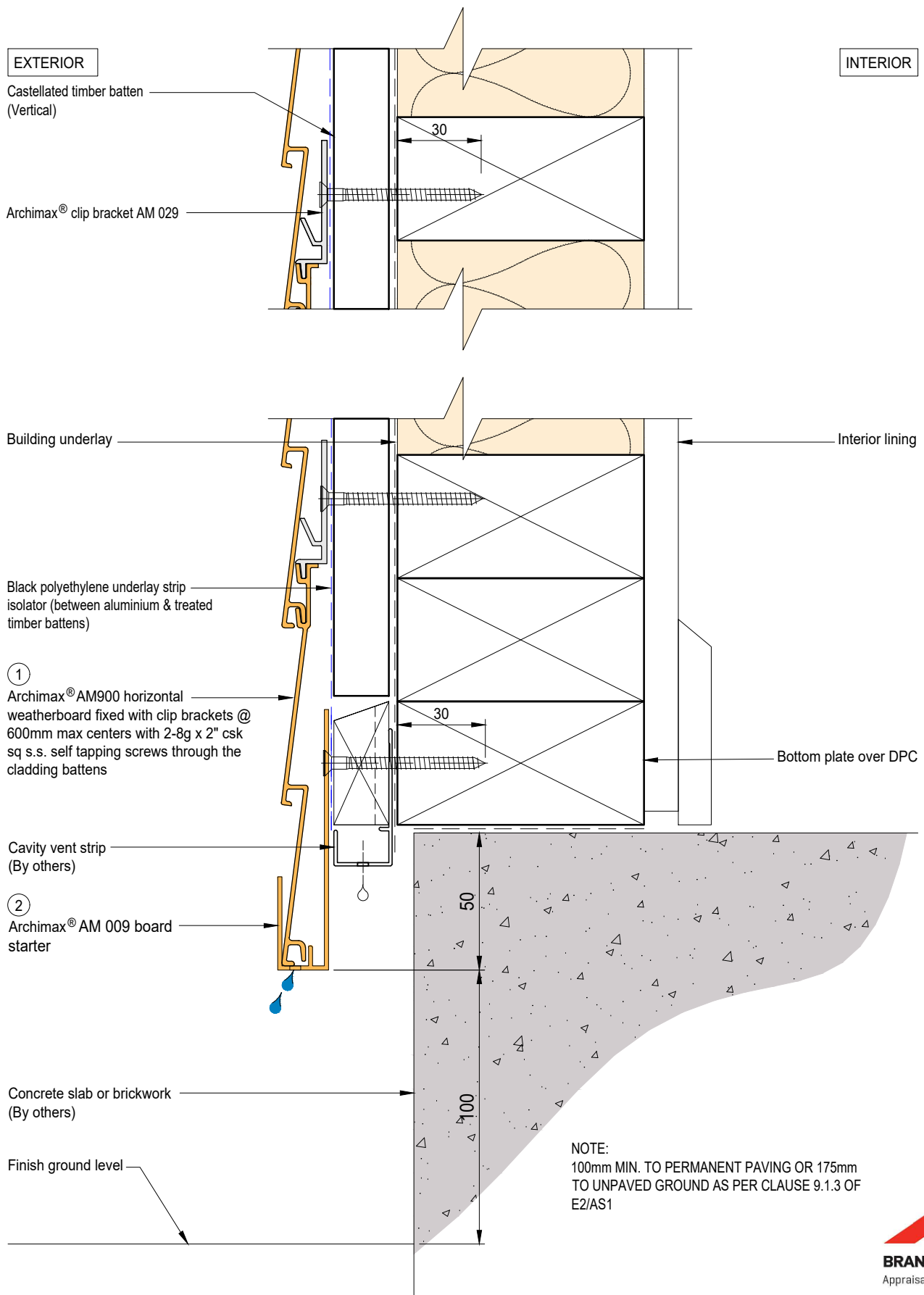


INTERIOR









EXTERIOR

Archimax® Aluminium Batten
AMB 01 (vertical)

Archimax® clip bracket AM 029

INTERIOR

Rigid air barrier
(FRR)

①
Archimax® AM 900 horizontal
weatherboard fixed with clip brackets @
600mm max centers with 2-8g x 2" csk
sq s.s. self tapping screws through the
cladding battens

Cavity vent strip
(By others)

②
Archimax® AM 009 board
starter

Concrete slab or brickwork
(By others)

Finish ground level

Interior lining

Bottom plate over DPC

NOTE:
100mm MIN. TO PERMANENT PAVING OR 175mm
TO UNPAVED GROUND AS PER CLAUSE 9.1.3 OF
E2/AS1



EXTERIOR

INTERIOR

Building underlay

Archimax® AM 900 horizontal weatherboard fixed with clip brackets @ 600mm max centers with 2-8g x 2" csk sq s.s. self tapping screws through the cladding battens (1)

DPC flashing barrier down to Archimax starter

Vertical battens

Black polyethylene underlay strip isolator (between aluminium & treated timber battens)

Flexible flashing tape

Cavity vent strip

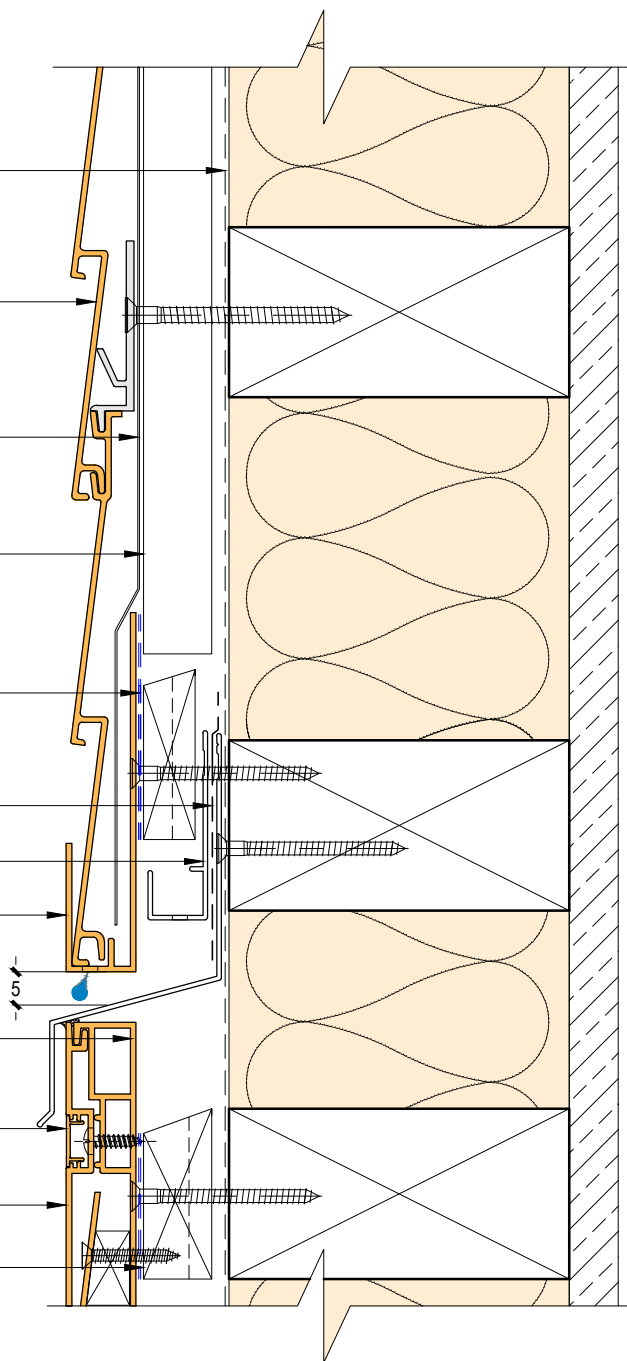
Archimax AM 009 board starter (2)

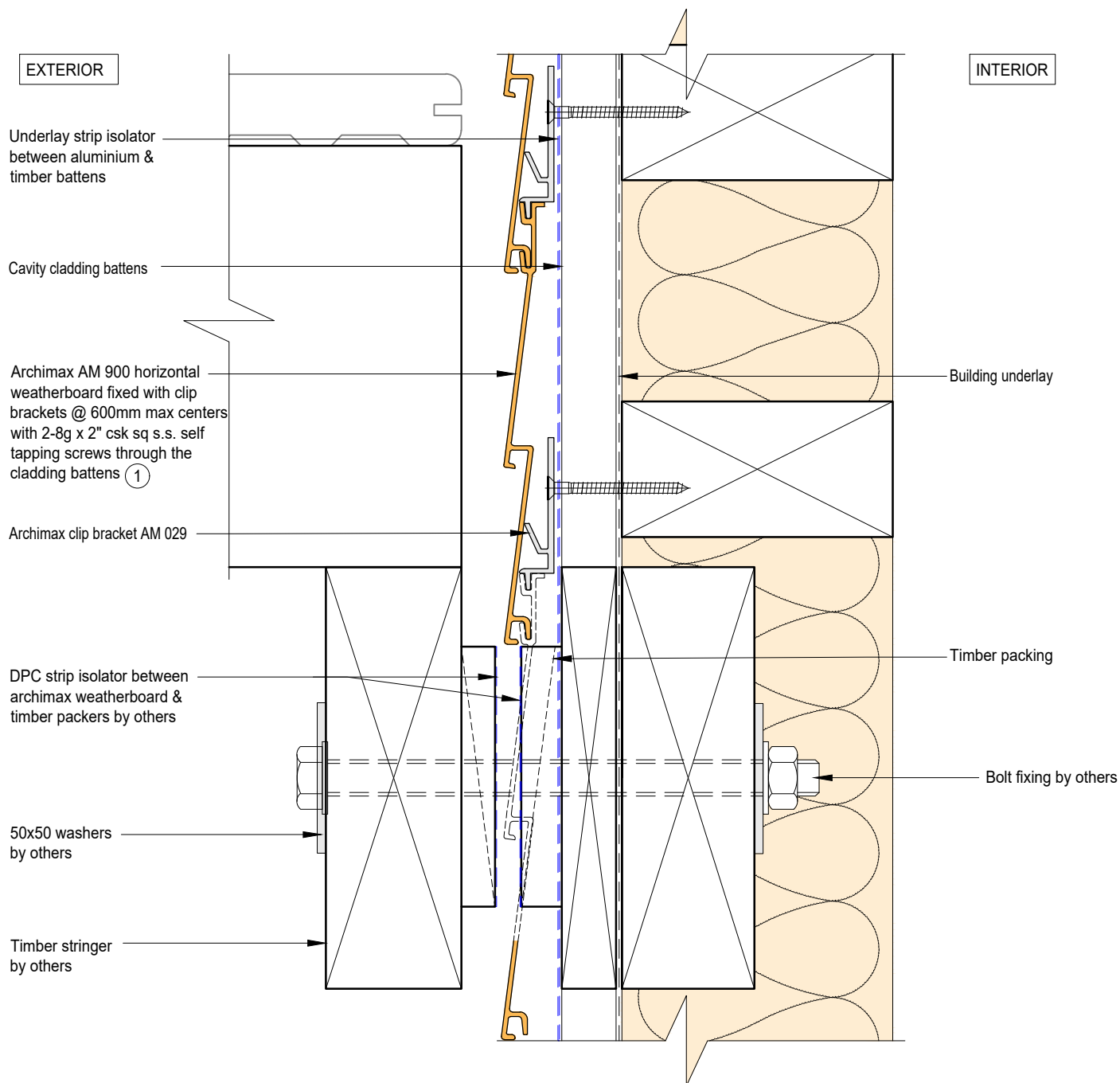
Archimax® AM 018 end capping cover part B (3)

Archimax® AM 016 capping cover clip (4)

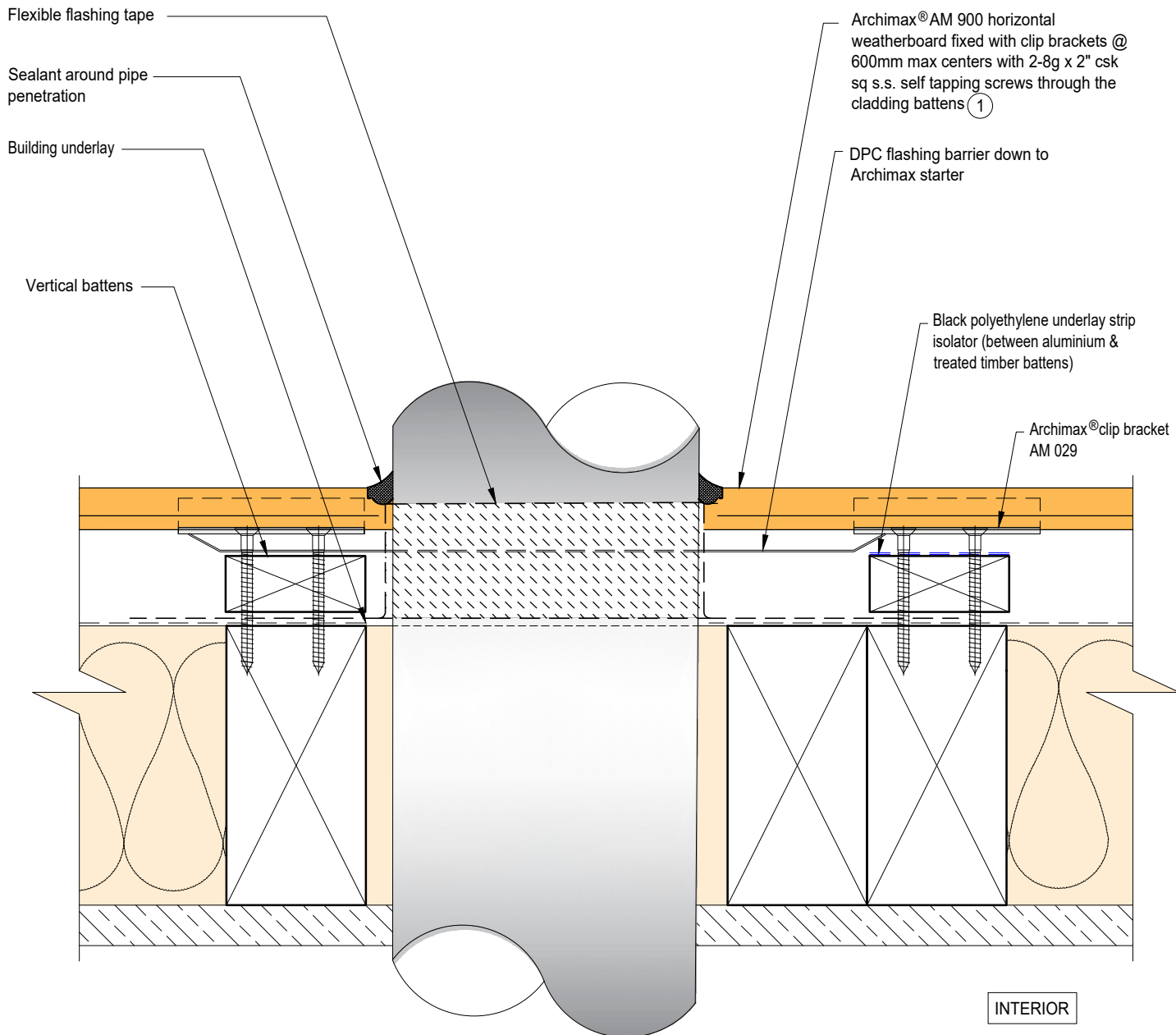
Archimax® AM 017 end capping cover part A (5)

Horizontal battens





EXTERIOR



EXTERIOR

INTERIOR

Archimax® AM 900 horizontal weatherboard fixed with clip brackets @ 600mm max centers with 2-8g x 2" csk sq s.s. self tapping screws through the cladding battens ①

Archimax® clip bracket AM 029

Vertical battens

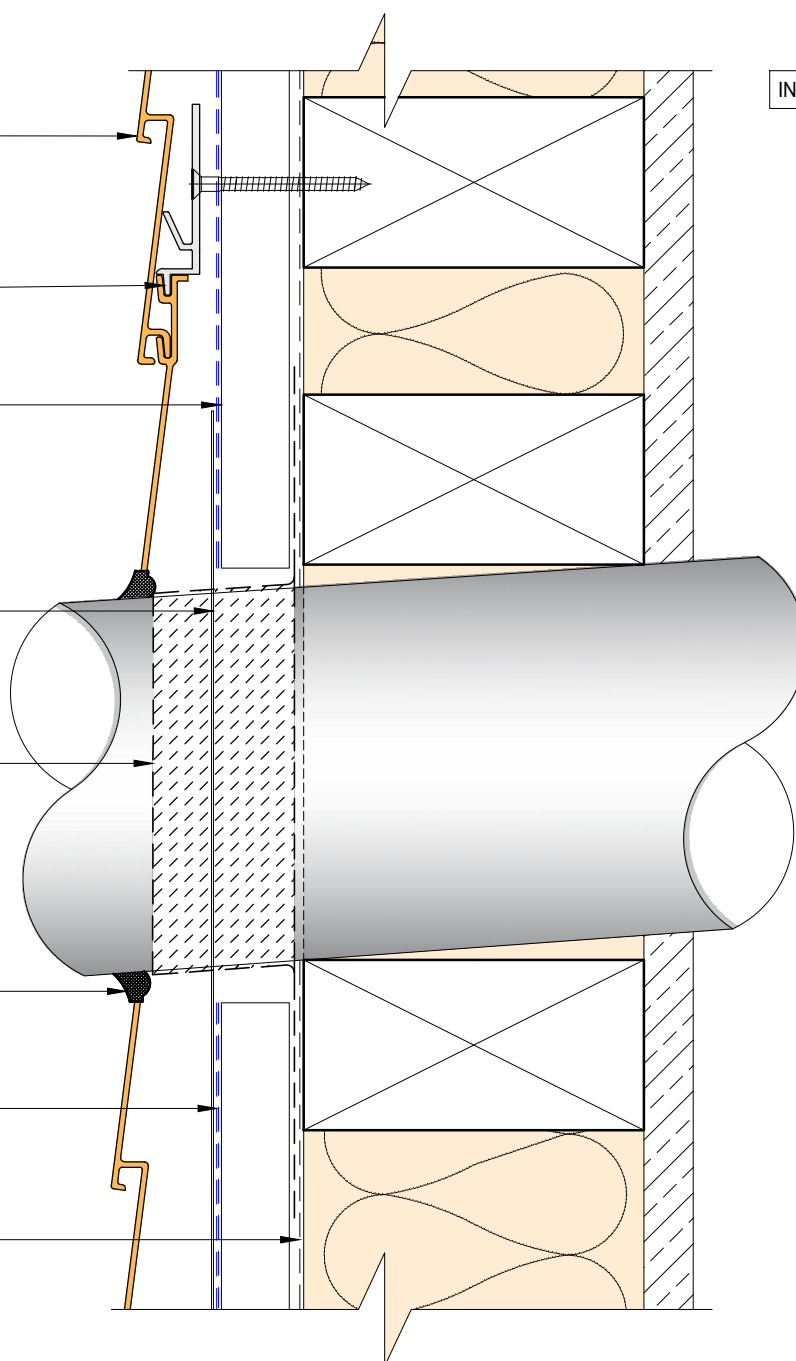
DPC flashing barrier down to Archimax starter

Flexible flashing tape

Sealant around pipe penetration

Black polyethylene underlay strip isolator (between aluminium & treated timber battens)

Building underlay



EXTERIOR

INTERIOR

Compressible foam tape

Archimax® AM 018 end capping
cover part B (3)

Archimax® AM 016 capping
cover clip (4)

Archimax® AM 017 end capping cover
part A (5)

Solid packer

Horizontal battens

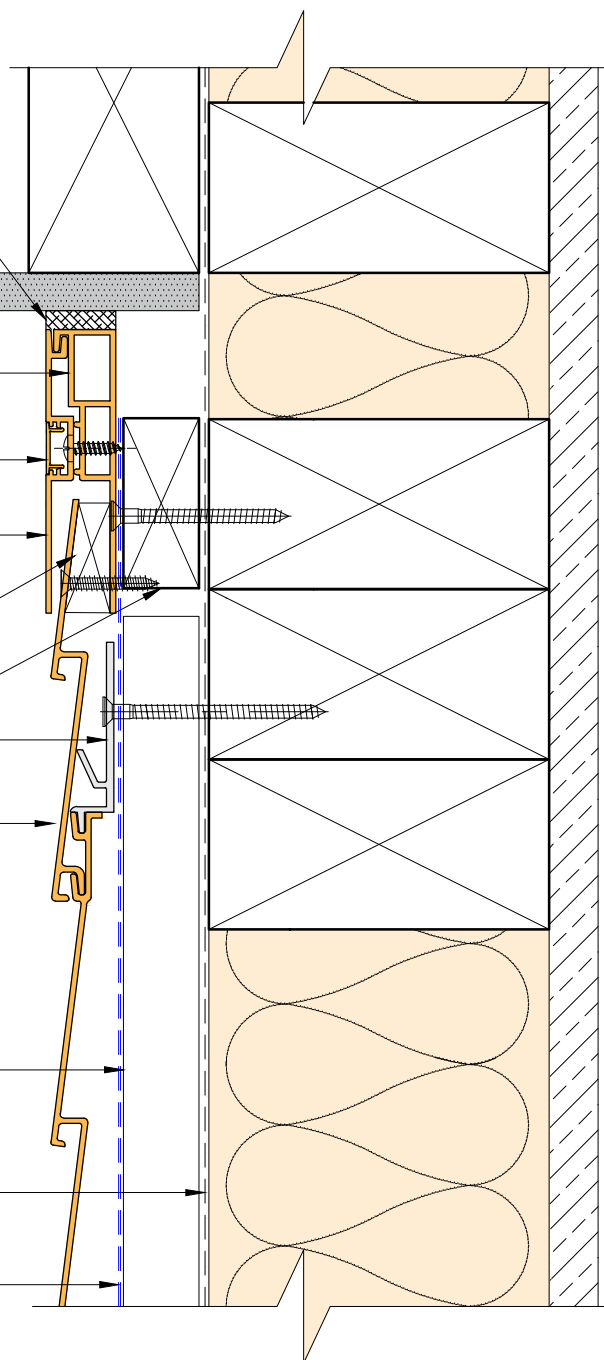
Archimax® clip bracket AM 029

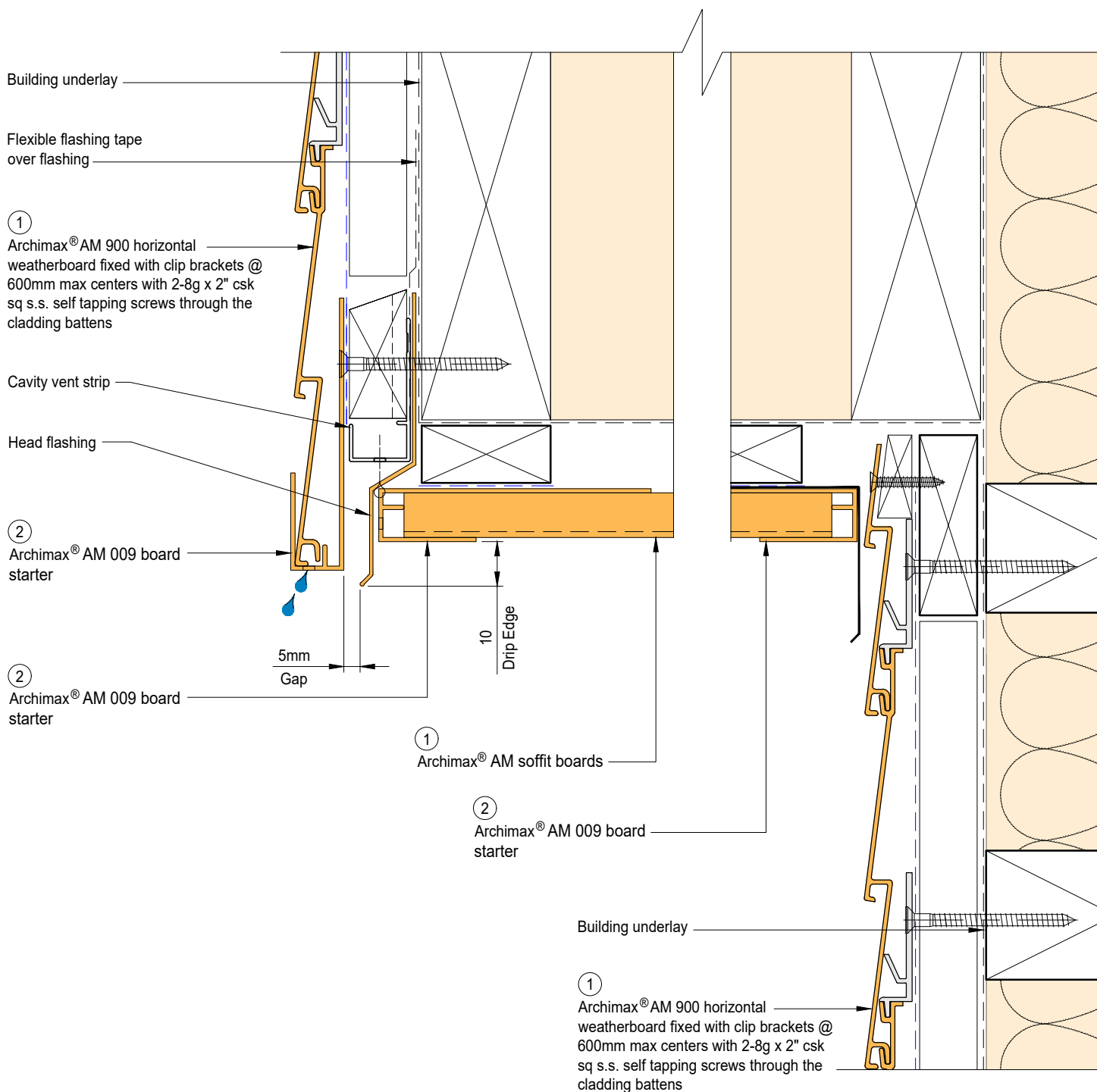
Archimax® AM 900 horizontal
weatherboard fixed with clip brackets @
600mm max centers with 2-8g x 2" csk sq
s.s. self tapping screws through the
cladding battens (1)

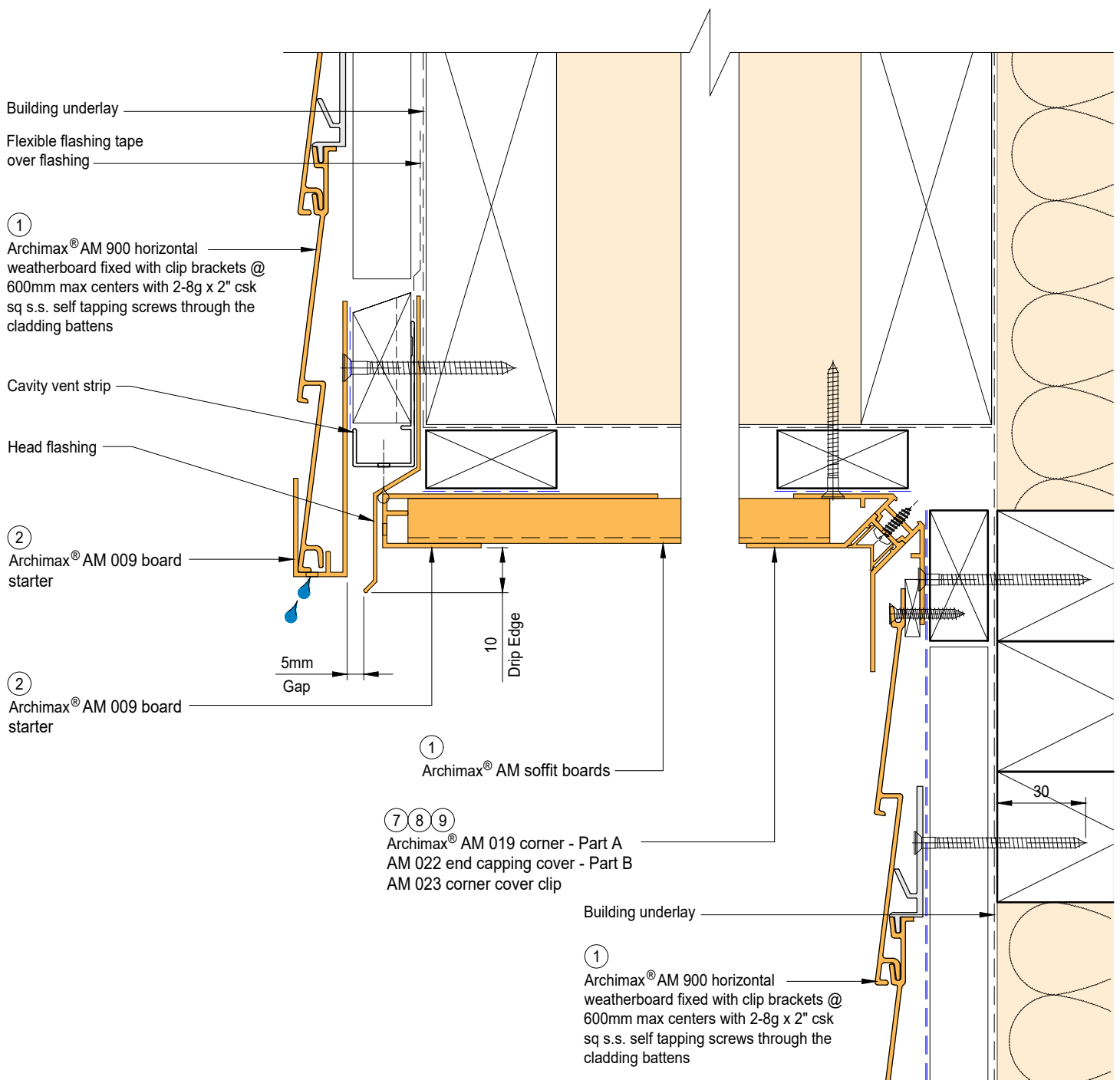
Vertical battens

Building underlay

Black polyethylene underlay strip
isolator (between aluminium & treated
timber battens)







EXTERIOR

Selected roofing

Flashing & sealed by others

Archimax® AM 018 end capping cover part B ③

Archimax® AM 016 capping cover clip ④

Archimax® AM 017 end capping cover part A ⑤

Black polyethylene underlay strip isolator (between aluminium & treated timber battens)

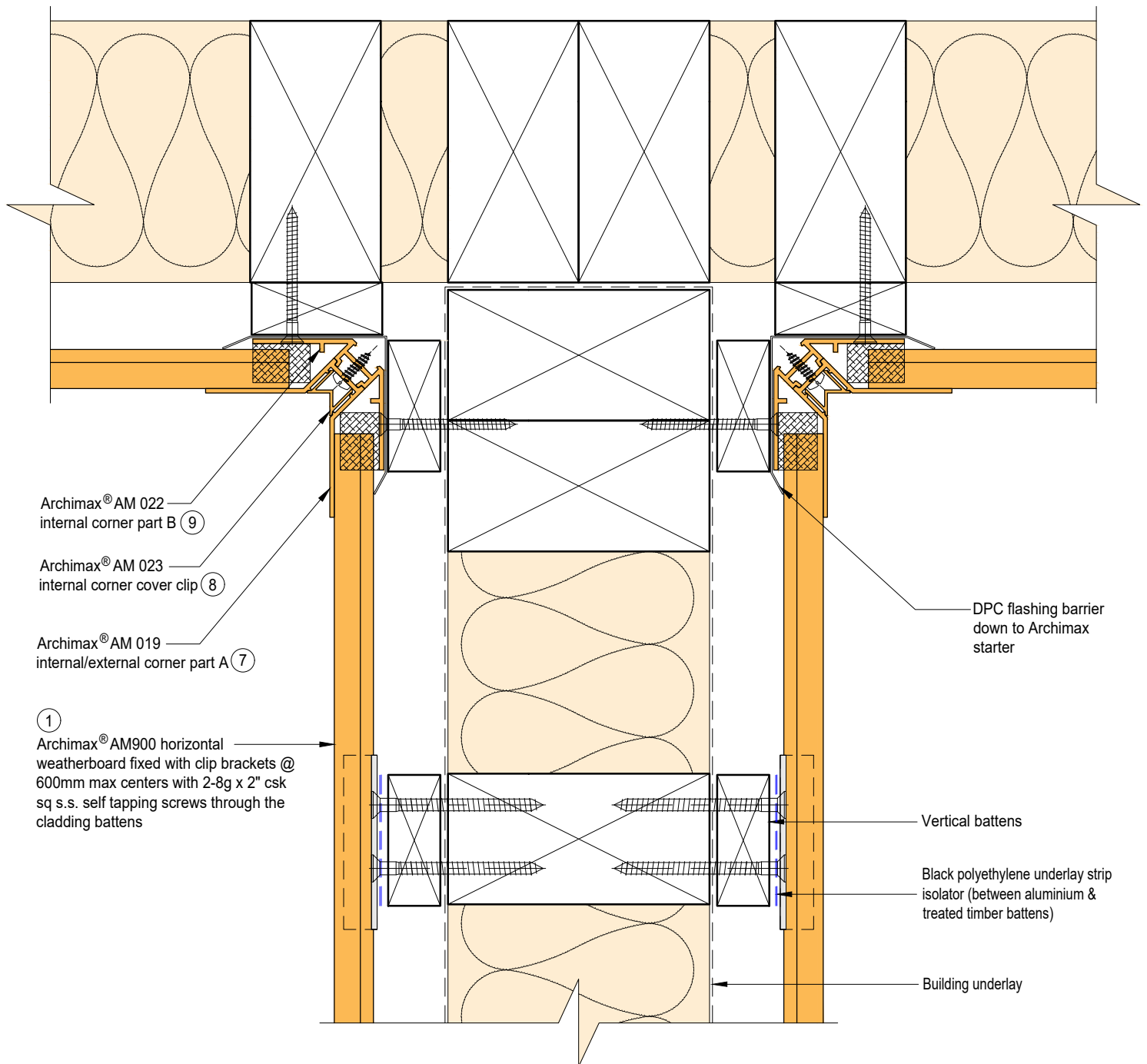
Solid packer

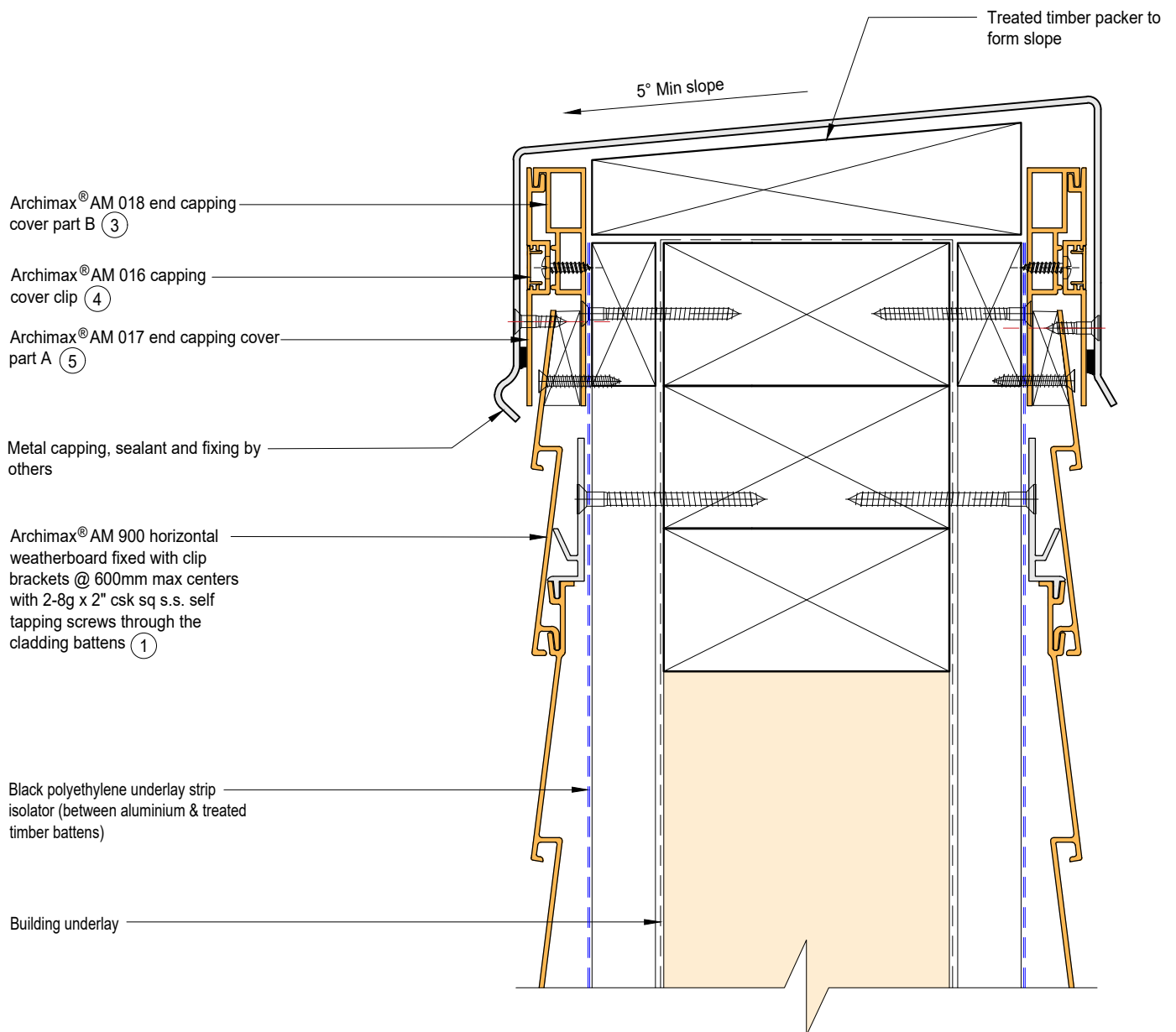
Horizontal battens

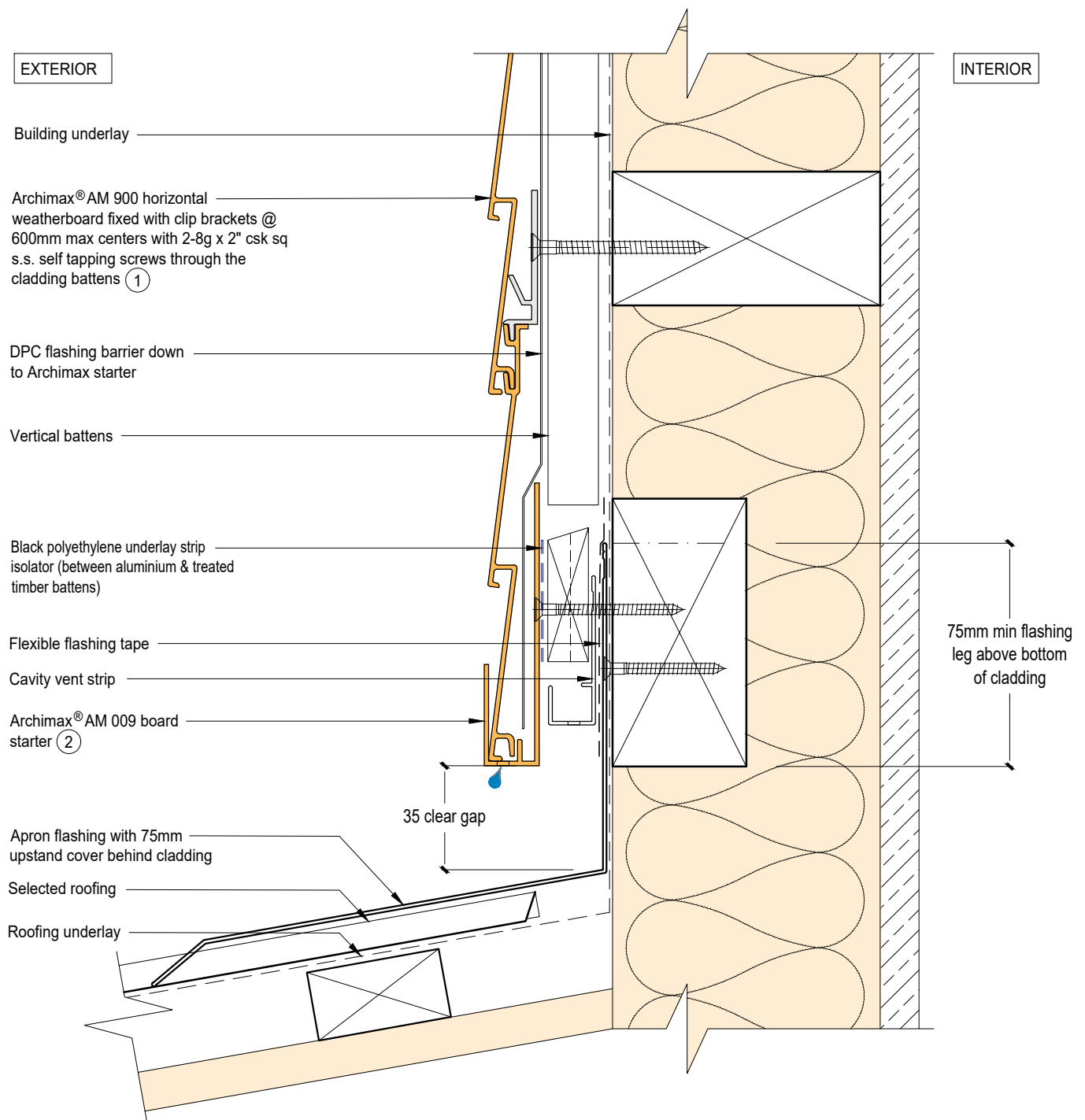
Archimax® AM 900 horizontal weatherboard fixed with clip brackets @ 600mm max centers with 2-8g x 2" csk sq s.s. self tapping screws through the cladding battens ①

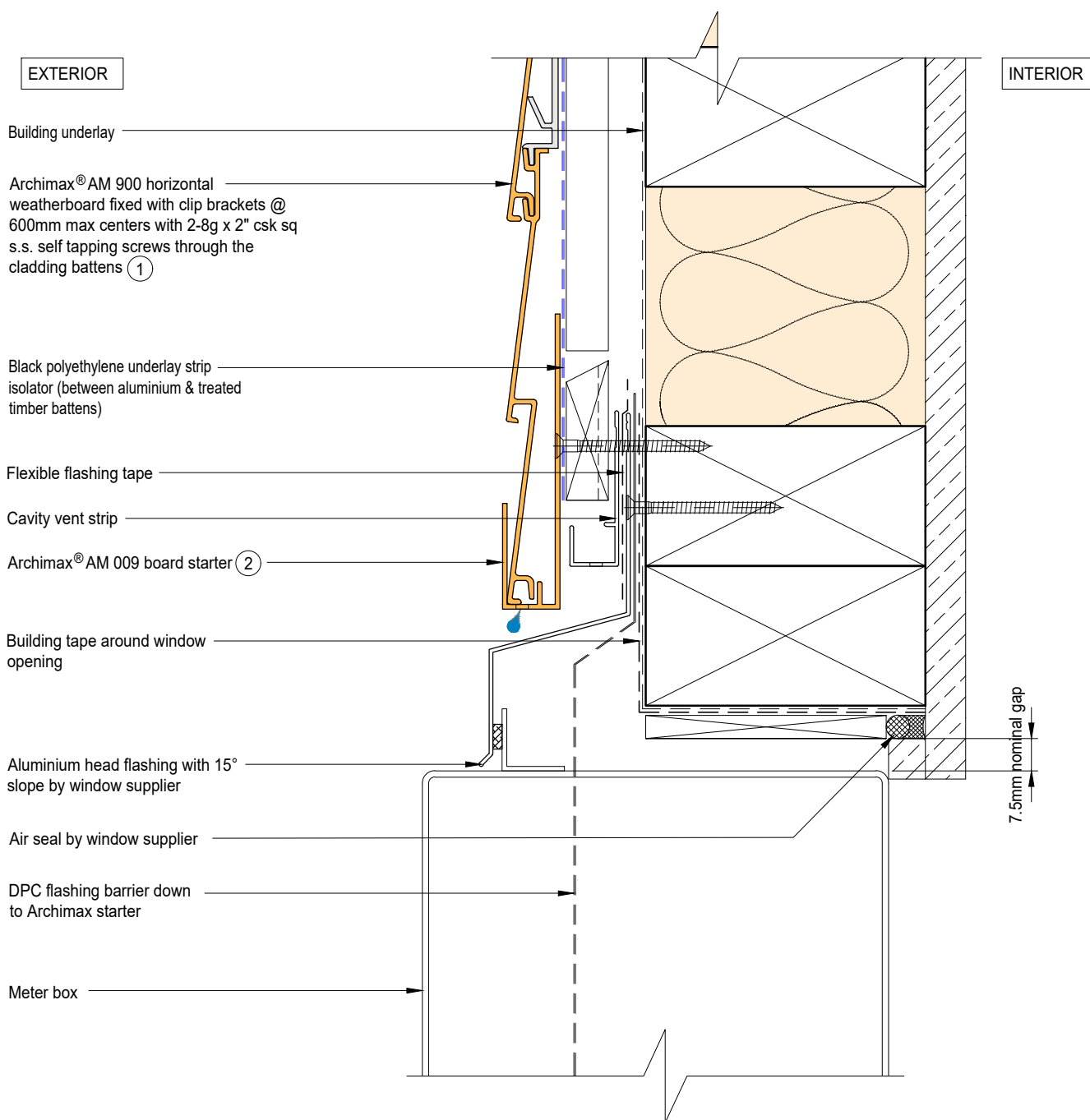
Vertical battens

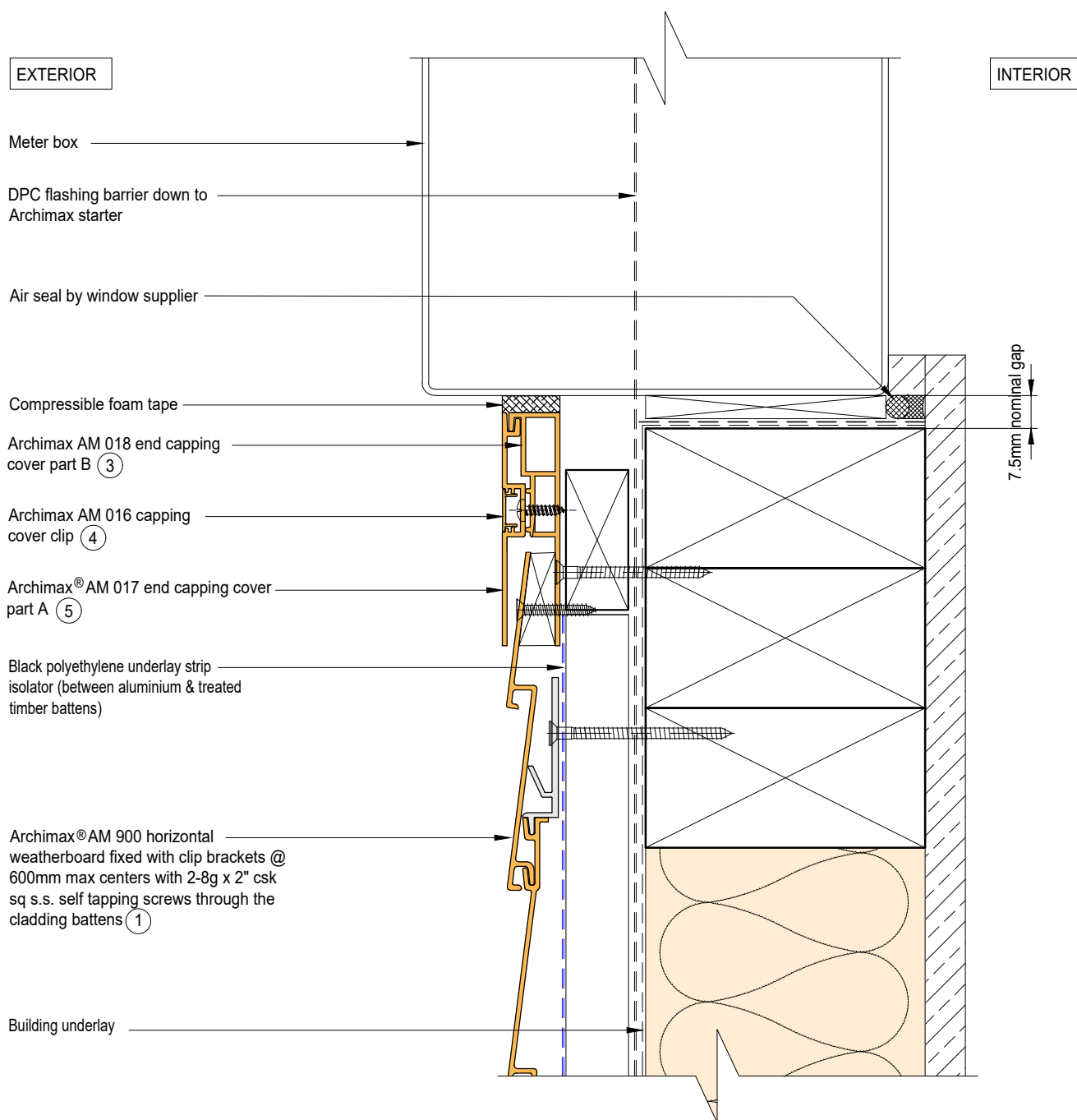
INTERIOR

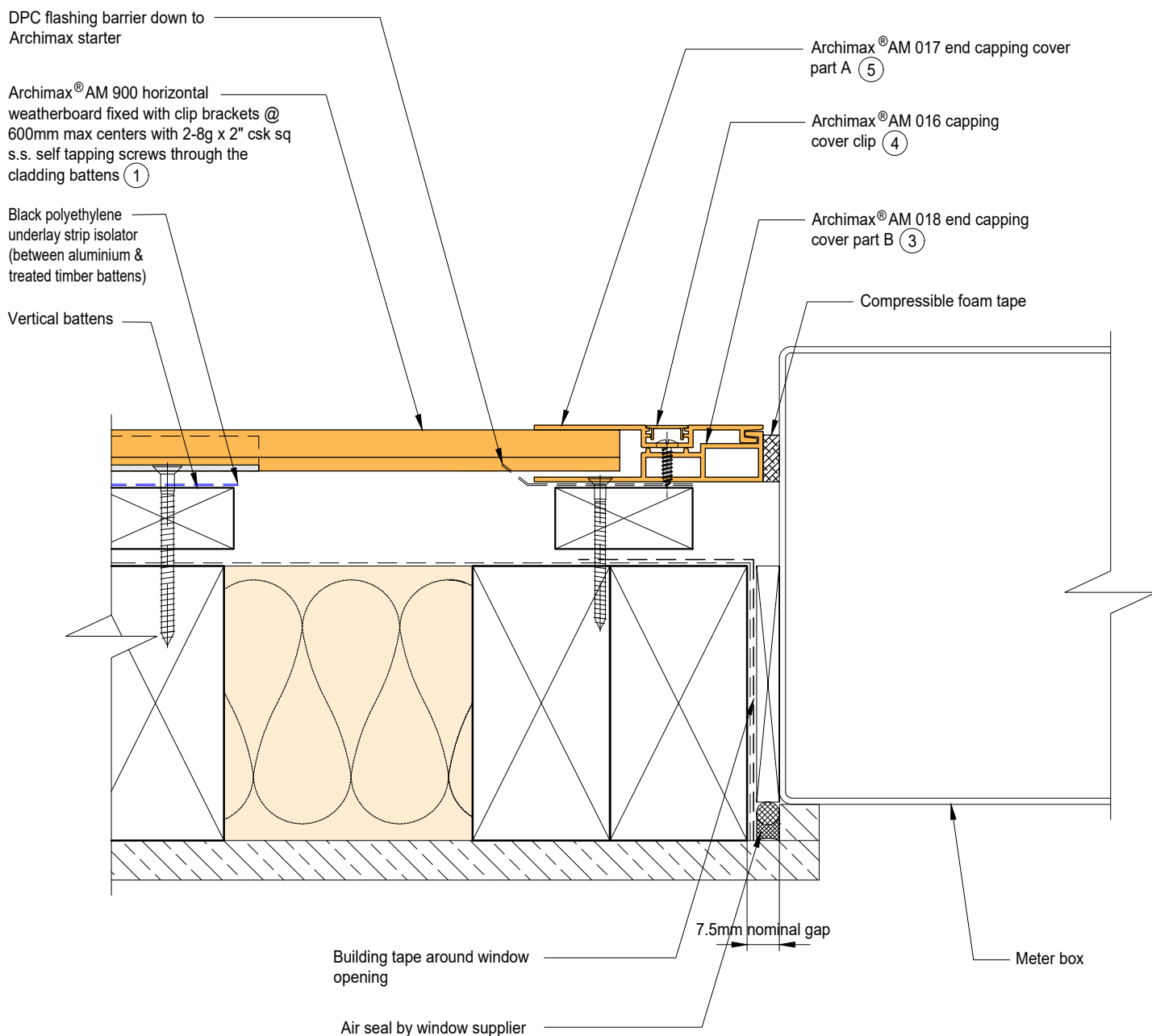




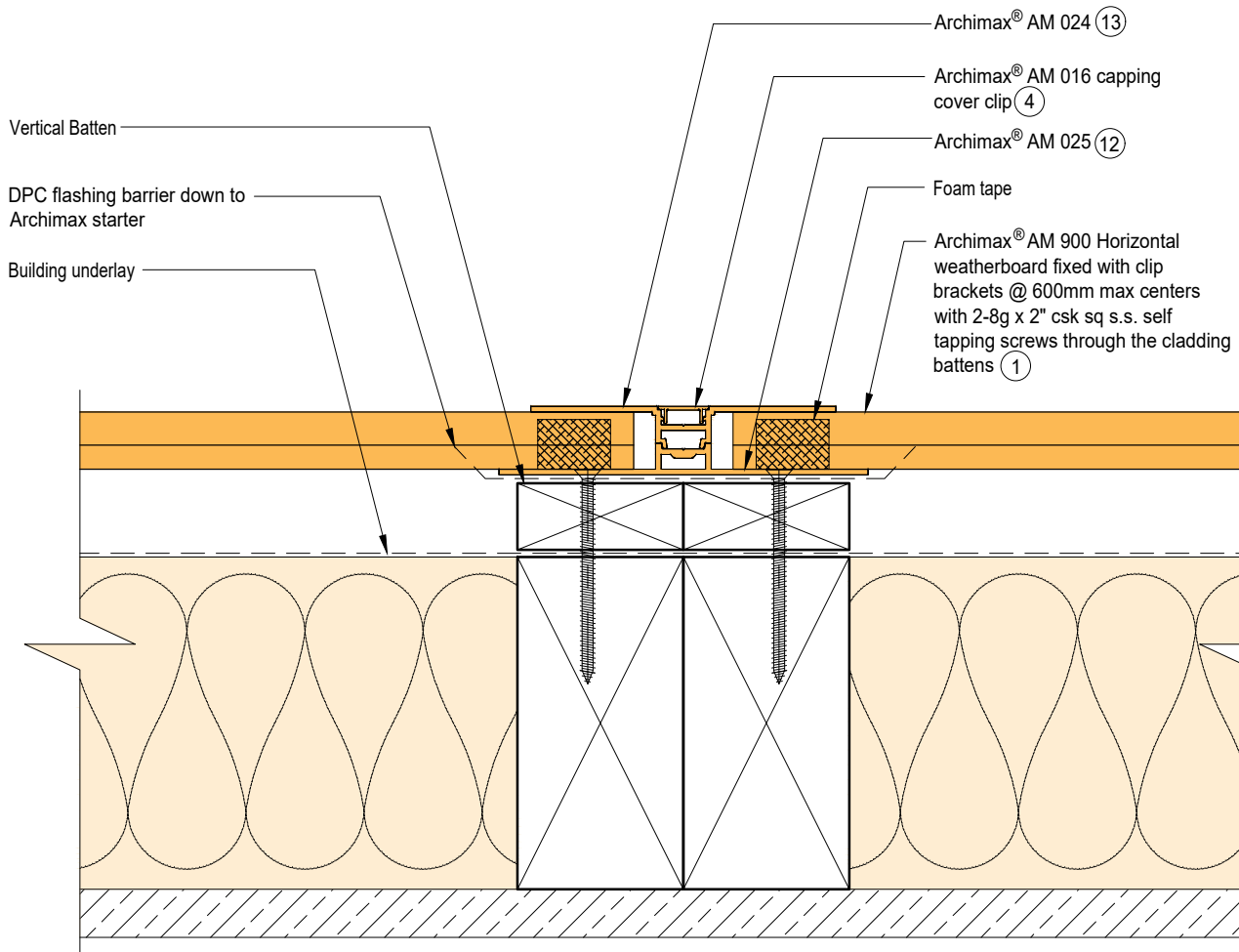








EXTERIOR



INTERIOR

