



ARCHIMAX

ALUMINIUM CLADDING SYSTEM

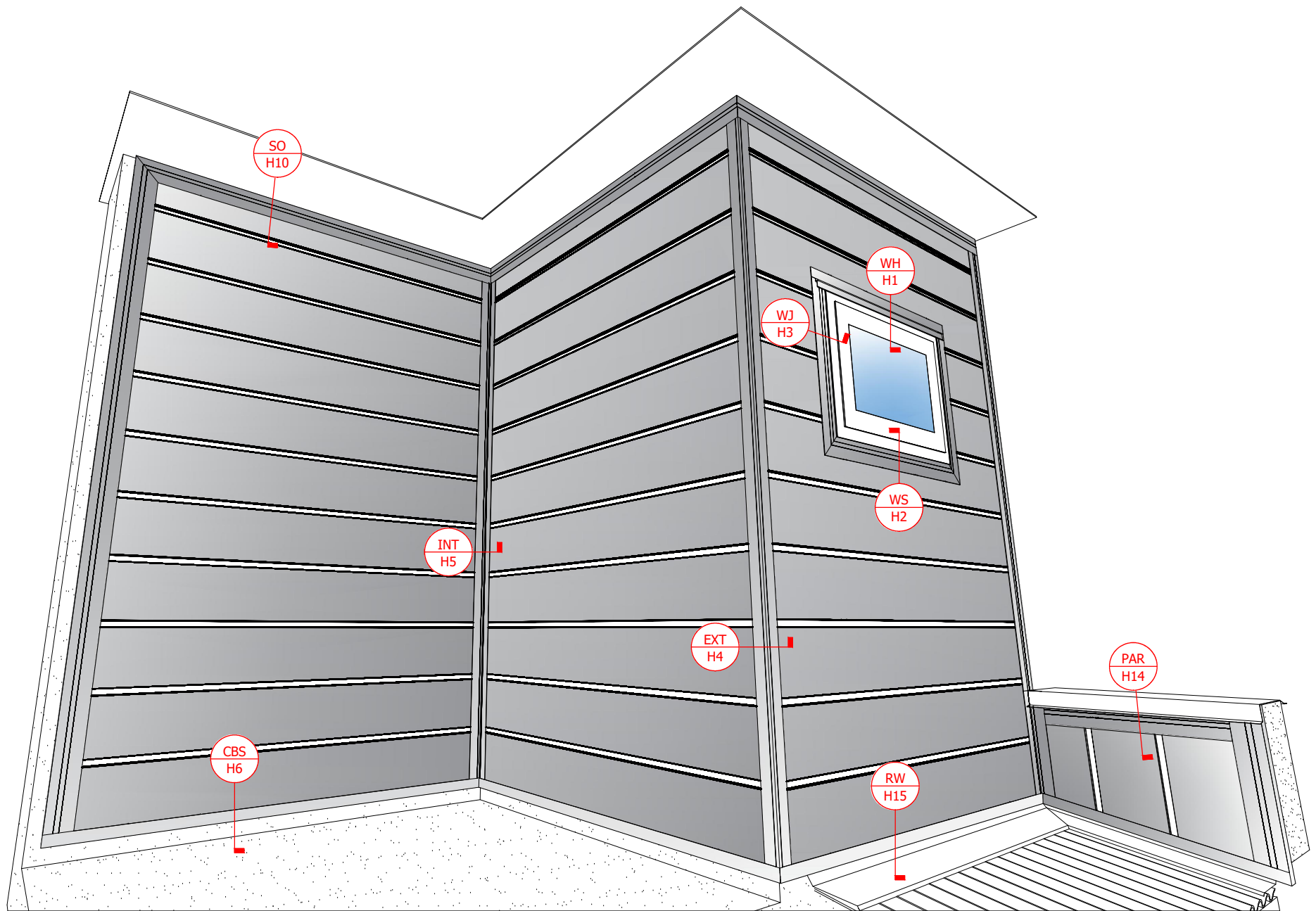
Creating more durable building envelopes

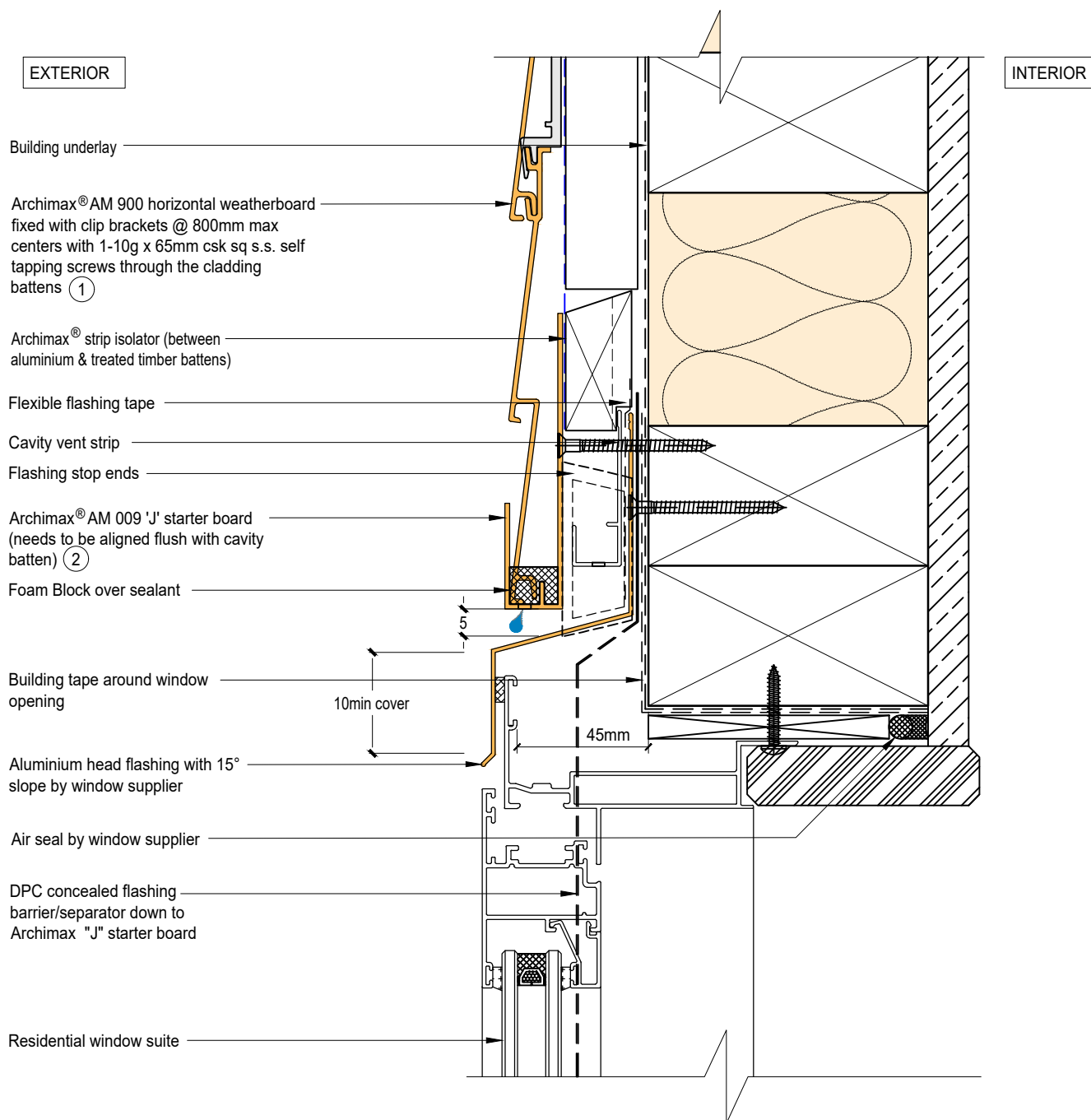
Archimax® Aluminium Cladding System AM900 Horizontal Profile – Installation details

Drawing No.	Rev.	Description
AM-WH-H1	E	Archimax® Window Head Detail
AM-WS-H2	E	Archimax® Window Sill Detail
AM-WJ-H3	E	Archimax® Window Jamb Detail
AM-EXT-H4	E	Archimax® External Corner Detail
AM-INT-H5	E	Archimax® Internal Corner Detail
AM-CBS-H6.1	E	Archimax® Concrete Floor Board Starter Detail - Timber
AM-CBS-H6.2	E	Archimax® Concrete Floor Board Starter Detail - Fire Wall
AM-HJ-H7	E	Archimax® Horizontal Joint Detail
AM-DJ-H8	E	Archimax® Deck Junction Detail
AM-PP-H9a	E	Archimax® Pipe Penetration - Plan View Detail
AM-PP-H9b	E	Archimax® Pipe Penetration - Section View Detail
AM-SO-H10	E	Archimax® Soffit Detail
AM-SO-H11.1	E	Archimax® Facia, Soffit & Wall Detail
AM-SO-H11.2	E	Archimax® Facia, Soffit & Wall (90° Soffit / Wall) Detail
AM-SO-H11.3	E	Archimax® Fascia, Board Soffit & Wall Detail
AM-NSO-H12	E	Archimax® Non - Soffit Detail
AM-BJ-H13	E	Archimax® Internal Corner Junction Detail
AM-PAR-H14	E	Archimax® Parapet with Cavity Detail
AM-RW-H15	E	Archimax® Lower Roof Wall Junction Detail
AM-MB-H16	E	Archimax® Meter Box Head Detail
AM-MB-H17	E	Archimax® Meter Box Sill Detail
AM-MB-H18	E	Archimax® Meter Box Jamb Detail
AM-VJ-H19	E	Archimax® Vertical Joint Detail



AM900
coverage: 200mm

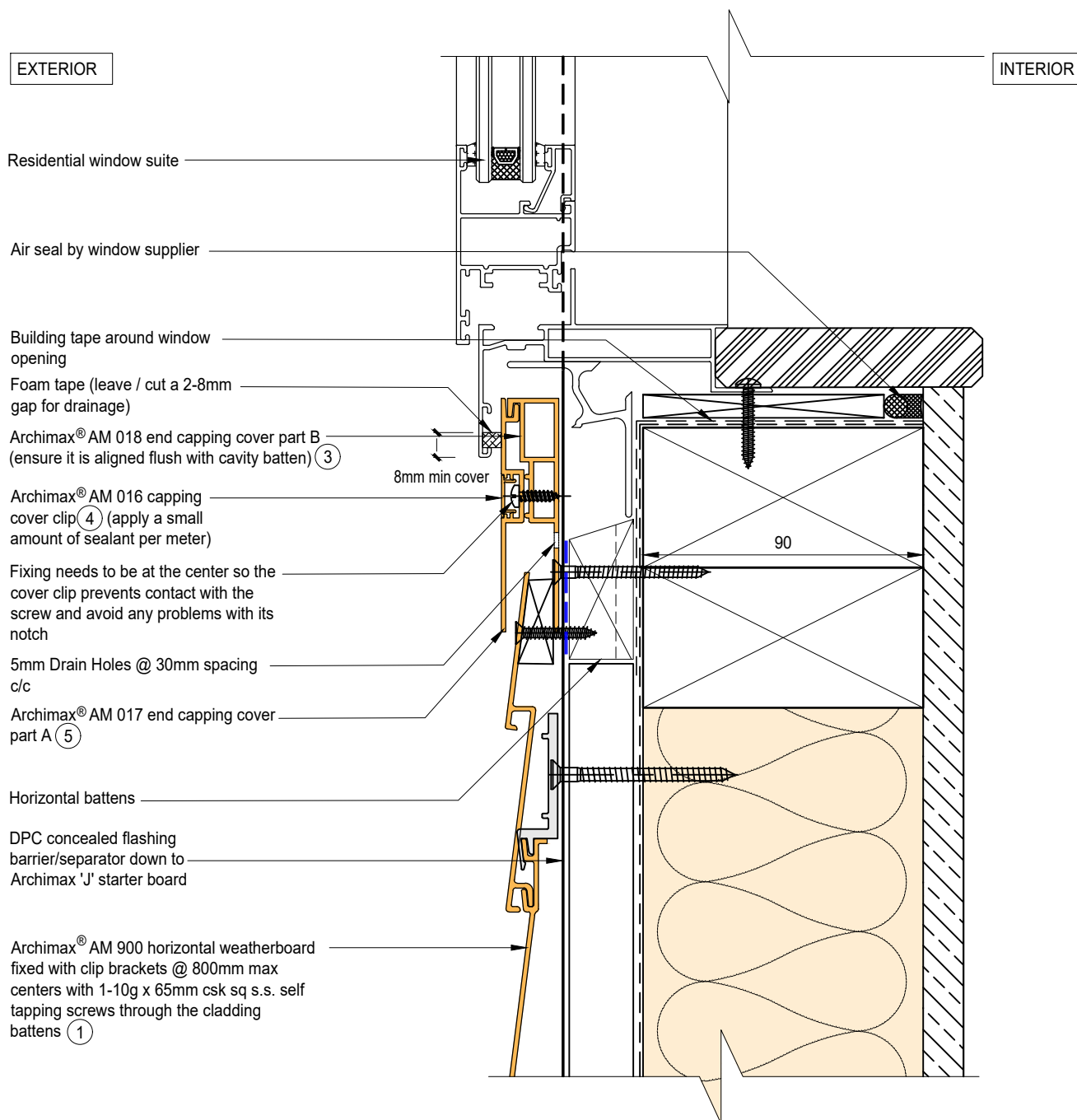




NOTE:

1. Stop ends to be installed at flashing ends.
2. Minimum Clearance between the AIR BARRIER and WINDOW JOINERY to be 45mm. Window Joinery should not be permanently fixed until cladding installed.
3. Sealant on each ends of the board board starter to prevent water going into cavity.
4. Timber Cavity Batten at 800mm max spacing.
5. Secure the AM029 clip with 1 screw for standard use, or 2 screws for added support



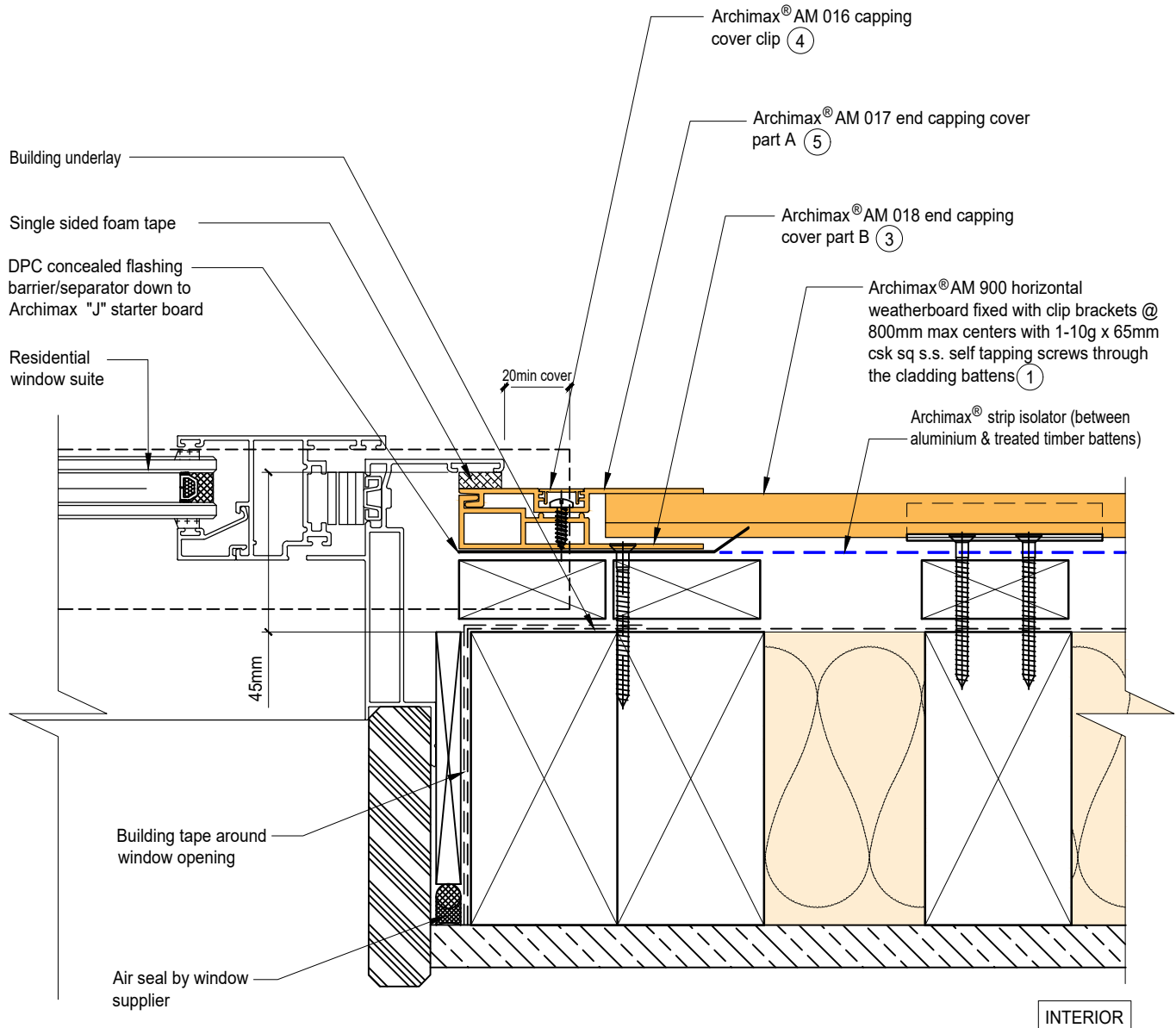


NOTE:

1. Minimum Clearance between the AIR BARRIER and WINDOW JOINERY to be 45mm. Window Joinery should not be permanently fixed until cladding installed.
2. Apply a small amount of sealant to every meter of the AM016 cover clip. Report to Archimax if AM016 cover clips are loose or tight. Do not force to install.
3. Timber Cavity Batten at 800mm max spacing.
4. Secure the AM029 clip with 1 screw for standard use, or 2 screws for added support



EXTERIOR

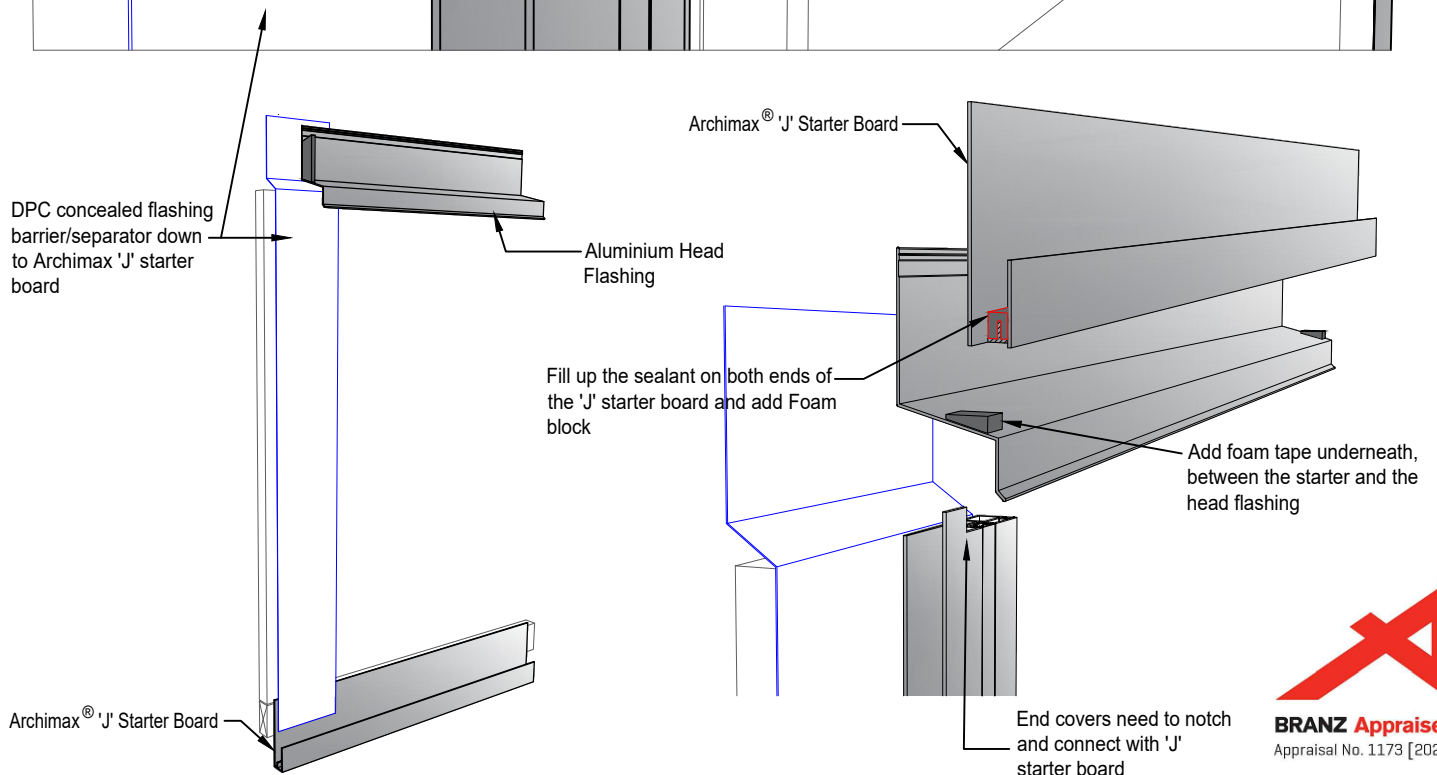
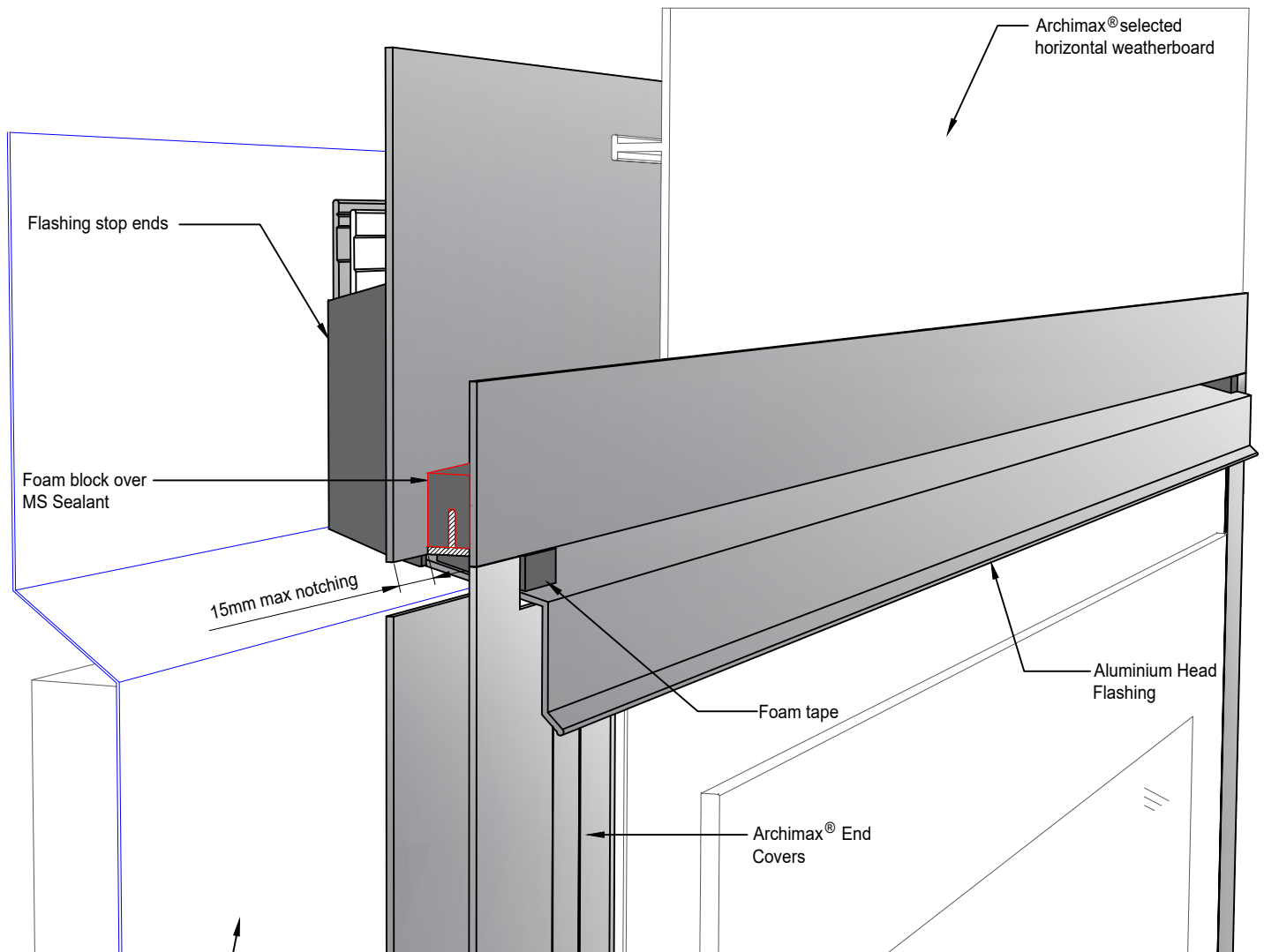


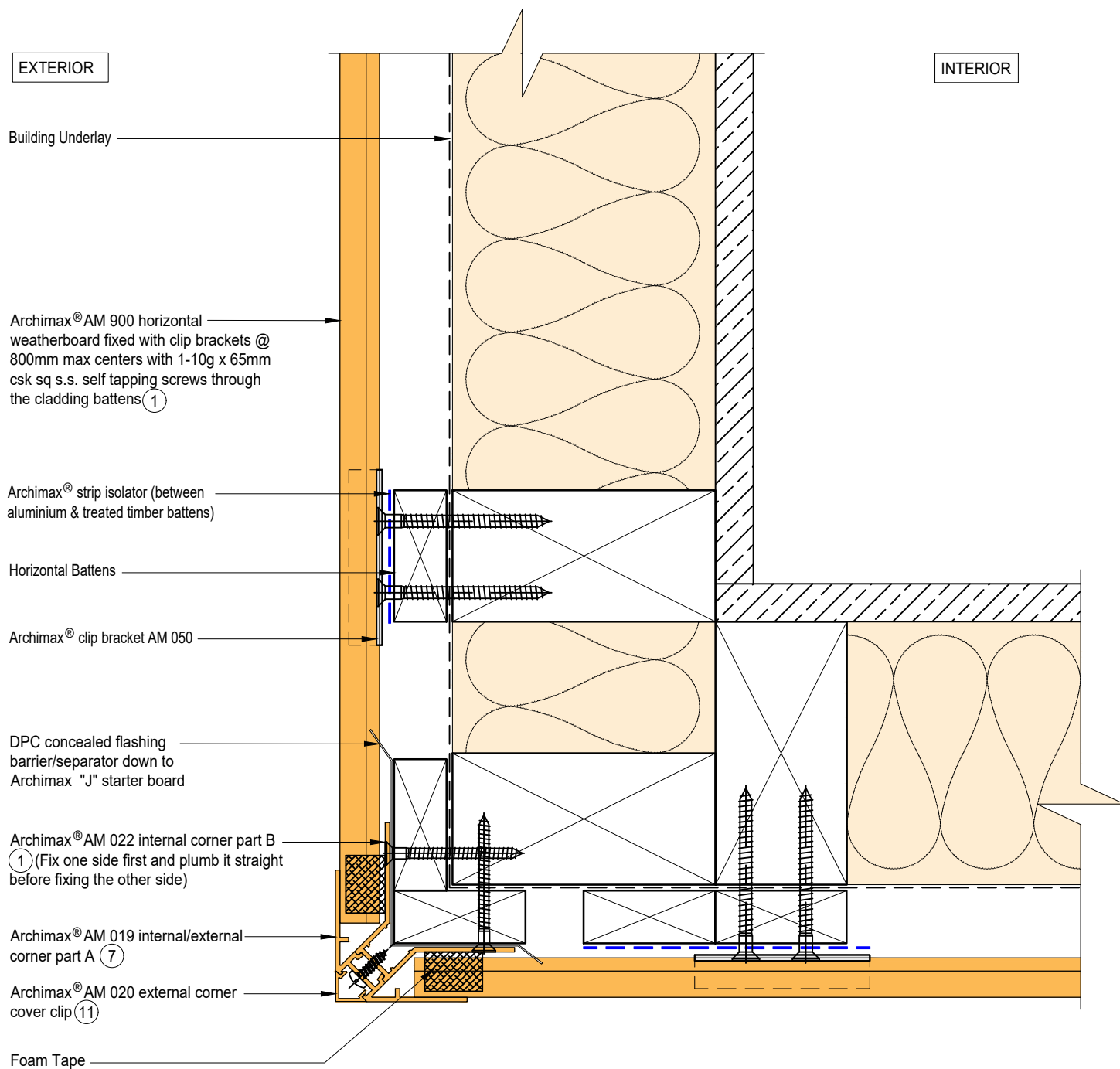
INTERIOR

NOTE:

1. Minimum Clearance between the AIR BARRIER and WINDOW JOINERY to be 45mm. Window Joinery should not be permanently fixed until cladding installed.
2. Ideally, use 5mm compressible foam tape, or use sealant to seal the gap between window frame and Archimax cladding depending on the site situation.
3. Apply a small amount of sealant to every meter of the AM016 cover clip. Report to Archimax if AM016 cover clips are loose or tight. Do not force to install.
4. Timber Cavity Batten at 800mm max spacing.
5. Secure the AM029 clip with 1 screw for standard use, or 2 screws for added support






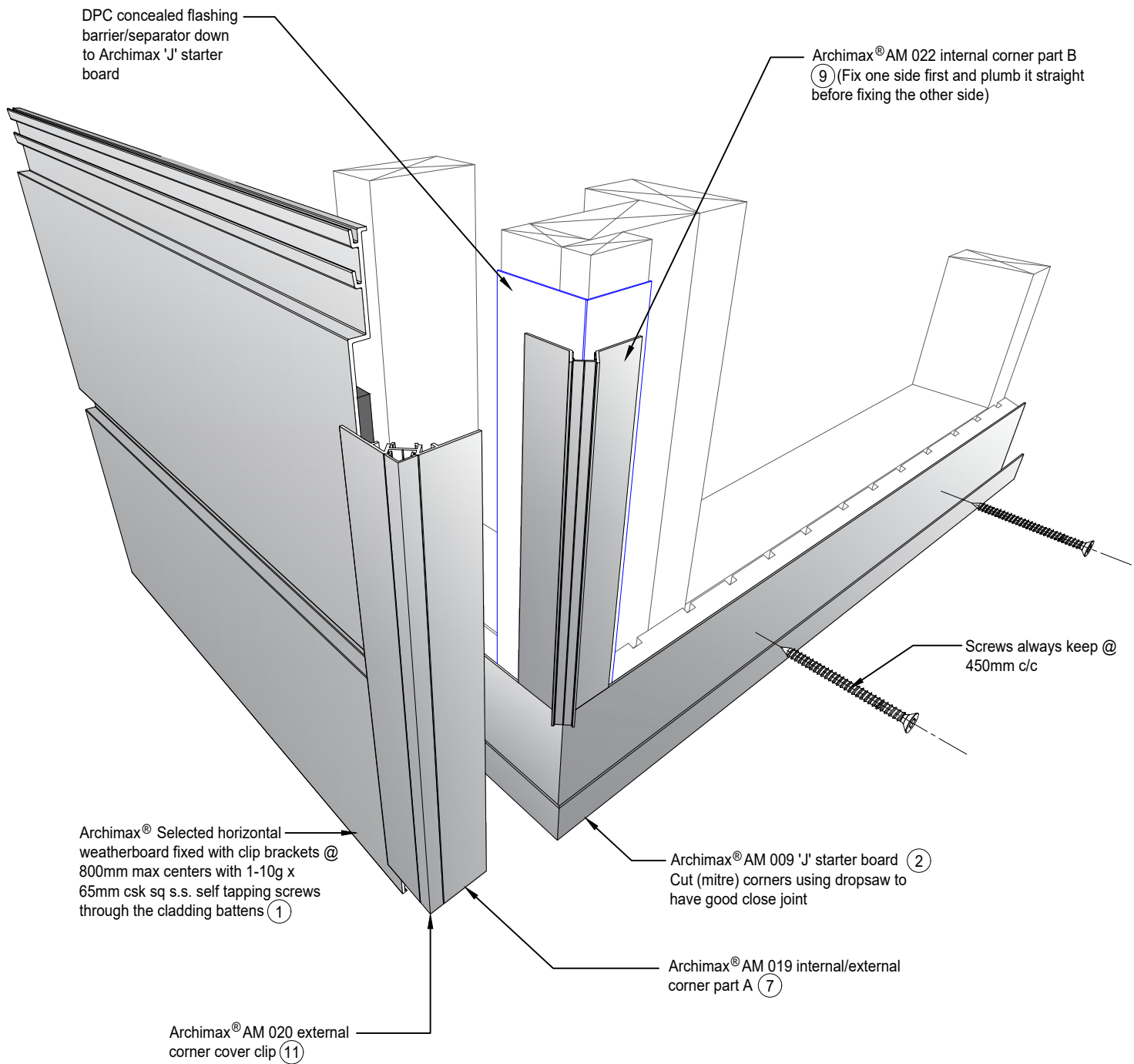


NOTE:

1. Fix the External Corner part B on one side first and plumb it straight before fixing the other side to avoid twisting.
2. Timber Cavity Batten at 800mm max spacing.
3. Secure the AM029 clip with 1 screw for standard use, or 2 screws for added support

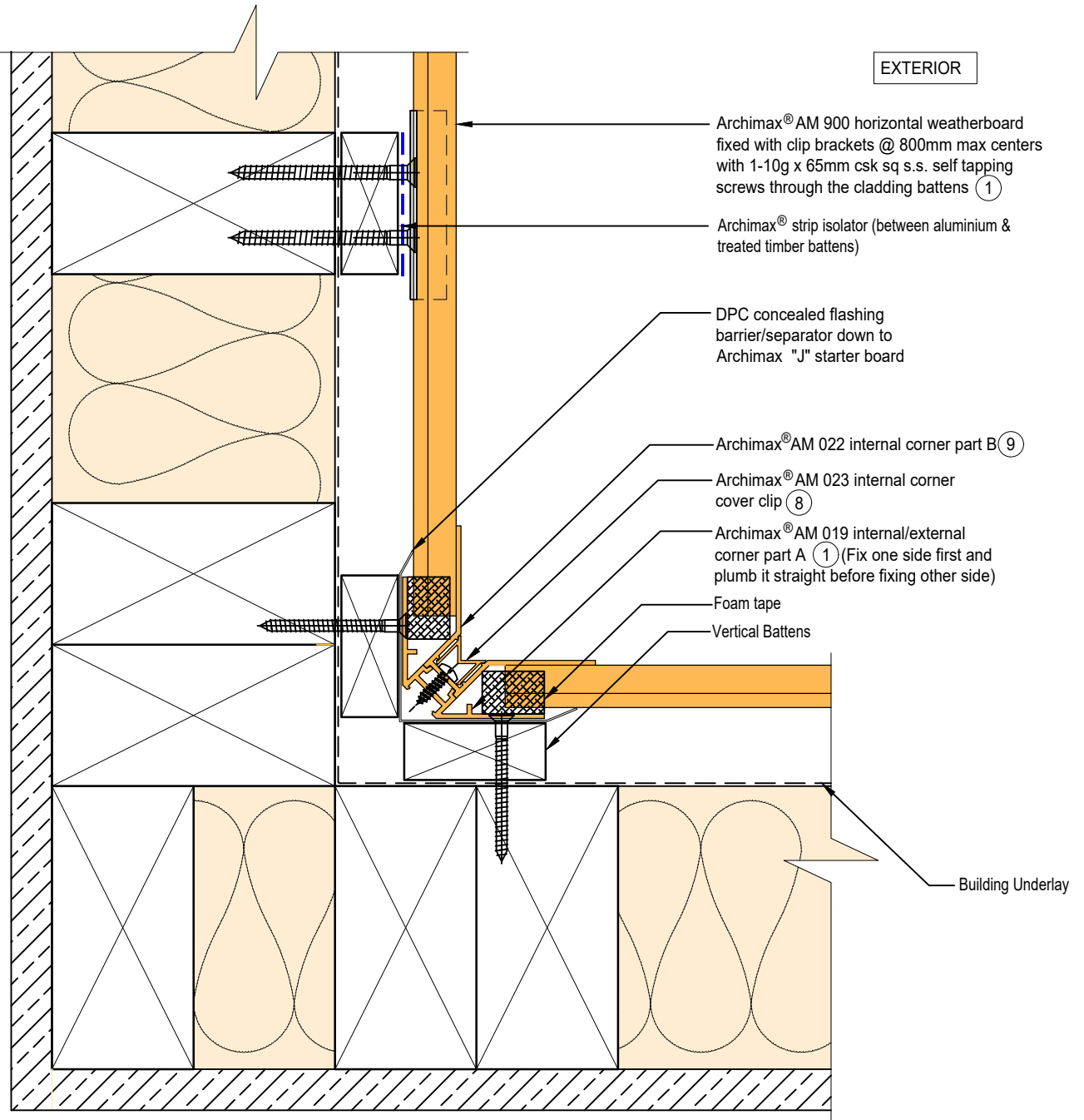


 ARCHIMAX ALUMINIUM CLADDING SYSTEM <i>Creating more durable building envelopes</i> www.archimax.co.nz	System AM 900 - HORIZONTAL WEATHERBOARD	Detail ARCHIMAX® EXTERNAL CORNER DETAIL	Drawing No. Rev. AM-EXT-H4 E
	This drawing is the copyright of Archimax Limited. Modification of details for job specification requirements must be approved by Archimax Ltd. The building designer is ultimately responsible to ensure all building work is designed and constructed according to building code requirements, best code of practice industry guidelines. All components must be supplied by Archimax. Archimax reserves the right to alter or upgrade details at any time without prior notice.		Scale Date 1:2 NOV24



INTERIOR

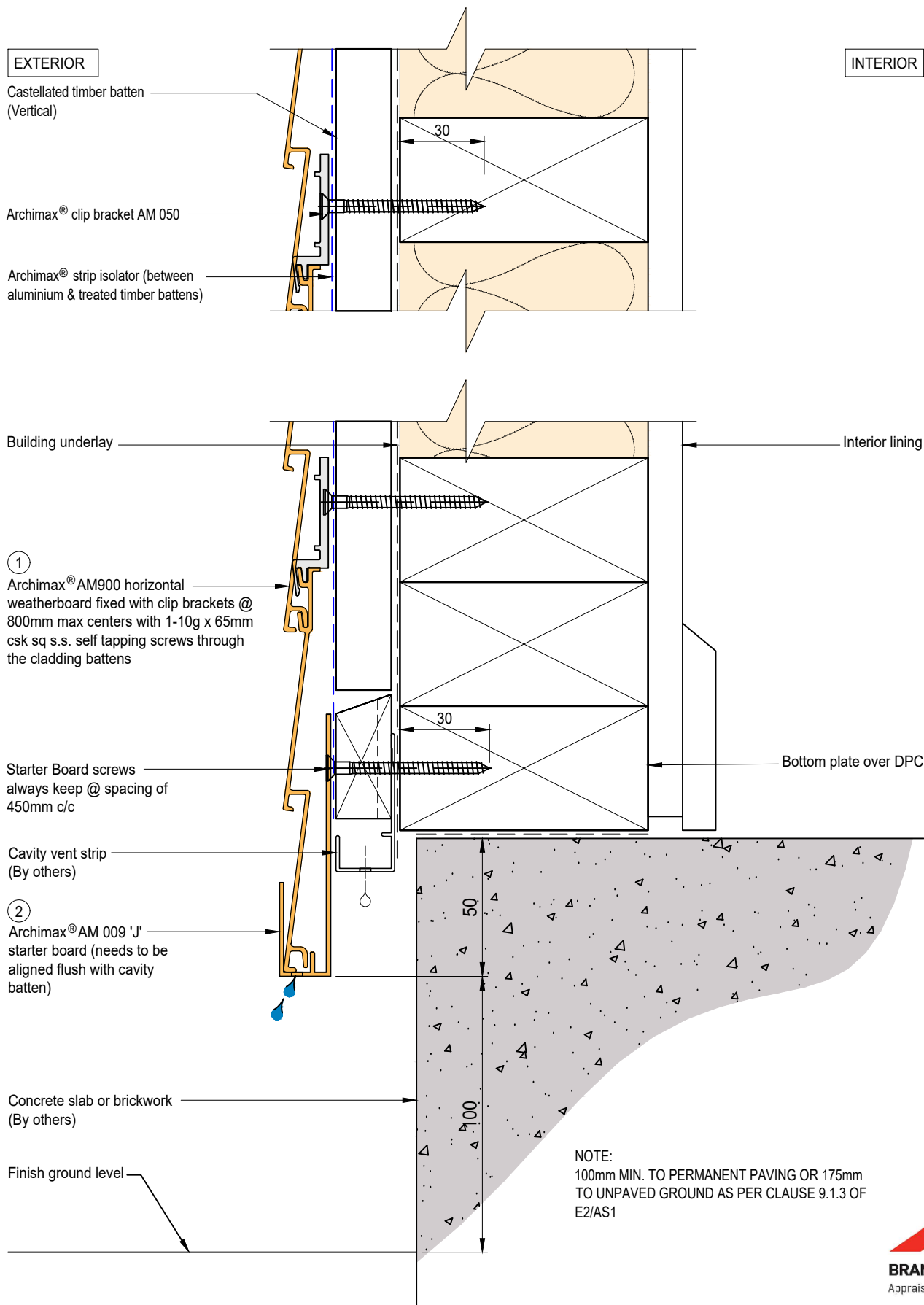
EXTERIOR



NOTE:

1. Fix the AM 019 internal/external corner part A on one side first and plumb it straight before fixing the other side to avoid twisting.
2. Timber Cavity Batten at 800mm max spacing.
3. Secure the AM029 clip with 1 screw for standard use, or 2 screws for added support





EXTERIOR

INTERIOR

Archimax® Aluminium Batten
AMB 01 (vertical)

Archimax® clip bracket AM 050

Rigid air barrier
(FRR)

①
Archimax® AM 900 horizontal
weatherboard fixed with clip brackets @
800mm max centers with 1-10g x 65mm
csk sq s.s. self tapping screws through
the cladding battens

Starter Board screws
always keep @ spacing of
450mm c/c

Cavity vent strip
(By others)

②
Archimax® AM 009 'J'
starter board (needs to be
aligned flush with cavity
batten)

Concrete slab or brickwork
(By others)

Finish ground level

Interior lining

Bottom plate over DPC

NOTE:
100mm MIN. TO PERMANENT PAVING OR 175mm
TO UNPAVED GROUND AS PER CLAUSE 9.1.3 OF
E2/AS1

EXTERIOR

INTERIOR

Building underlay

Archimax® AM 900 horizontal weatherboard fixed with clip brackets @ 800mm max centers with 1-10g x 65mm csk sq s.s. self tapping screws through the cladding battens ①

Flexible flashing tape

Archimax® strip isolator (between aluminium & treated timber battens)

Cavity vent strip

Archimax® AM 009 'J' starter board ② (needs to be aligned flush with cavity batten)

Inter-Storey flashing stop ends

Archimax® AM 018 end capping cover part B (ensure it is aligned flush with cavity batten) ③

Archimax® AM 016 capping cover clip ④ (apply a small amount of sealant per meter)

Archimax® AM 017 end capping cover part A ⑤

5mm Drain Holes @ 30mm spacing c/c

13

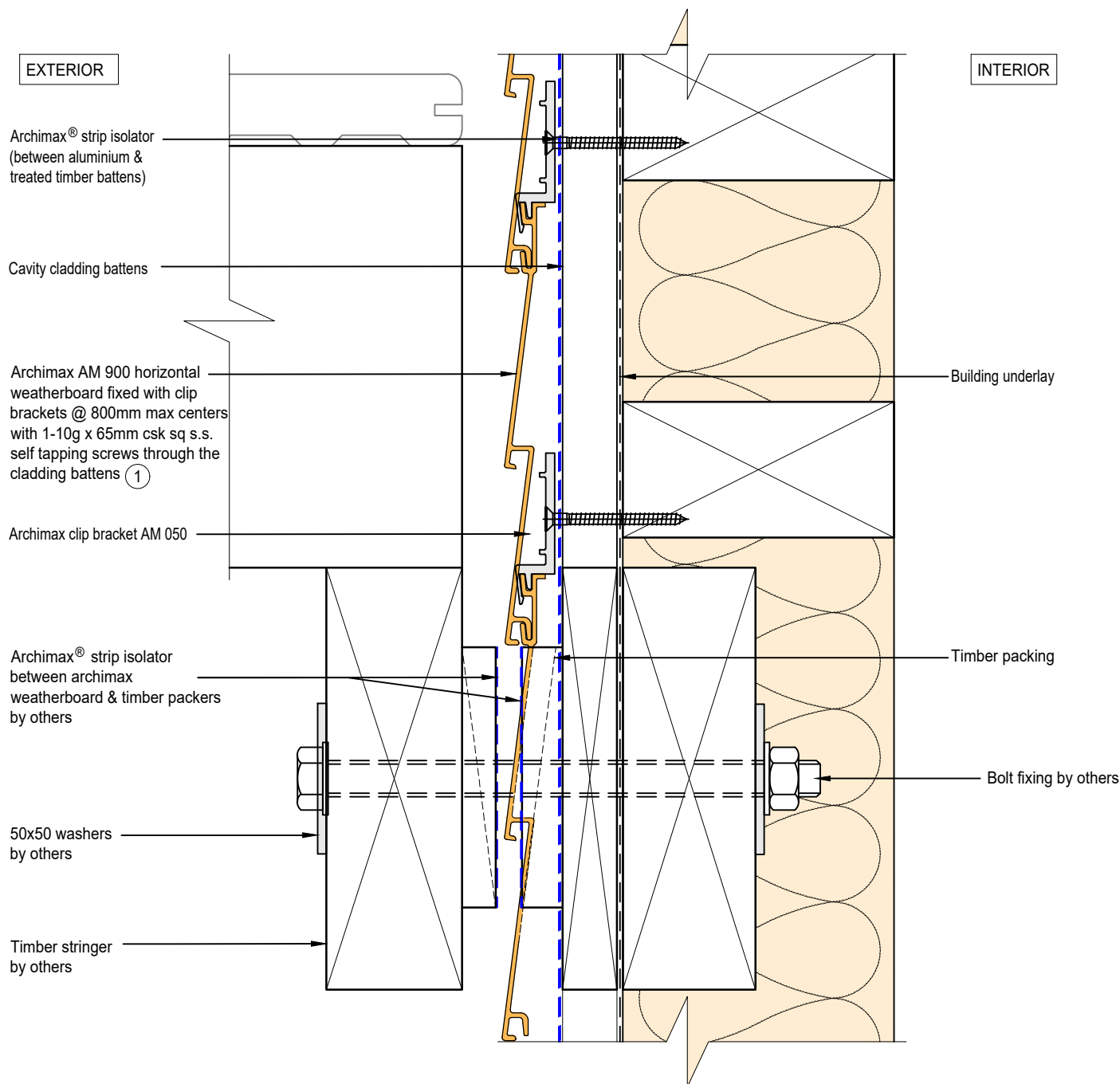
5

21.4

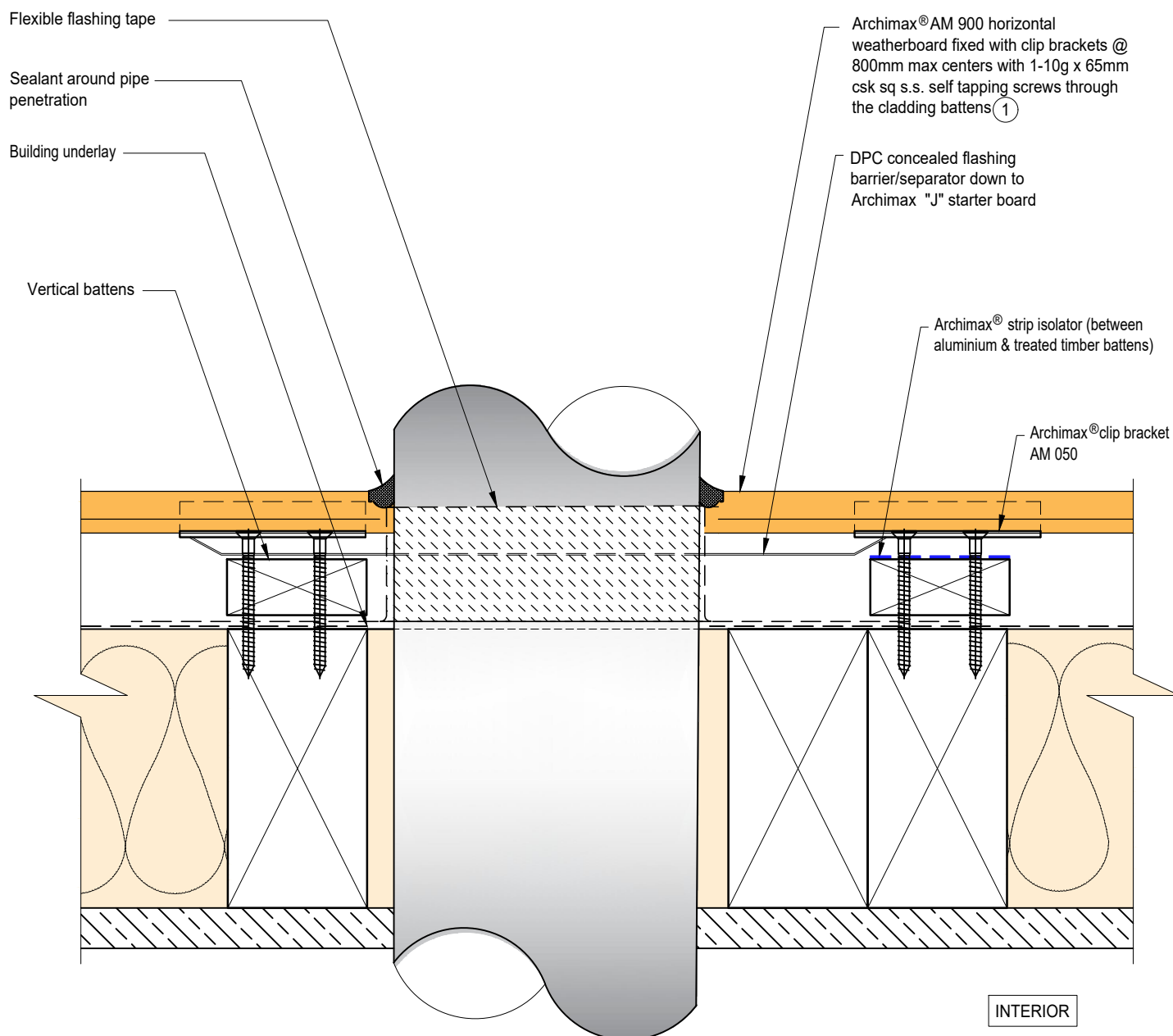
NOTE:

STOP ENDS TO BE INSTALLED AT INTER-STOREY FLASHING ENDS





EXTERIOR



EXTERIOR

INTERIOR

Archimax® AM 900 horizontal weatherboard fixed with clip brackets @ 800mm max centers with 1-10g x 65mm csk sq s.s. self tapping screws through the cladding battens ①

Archimax® clip bracket AM 050

Vertical battens

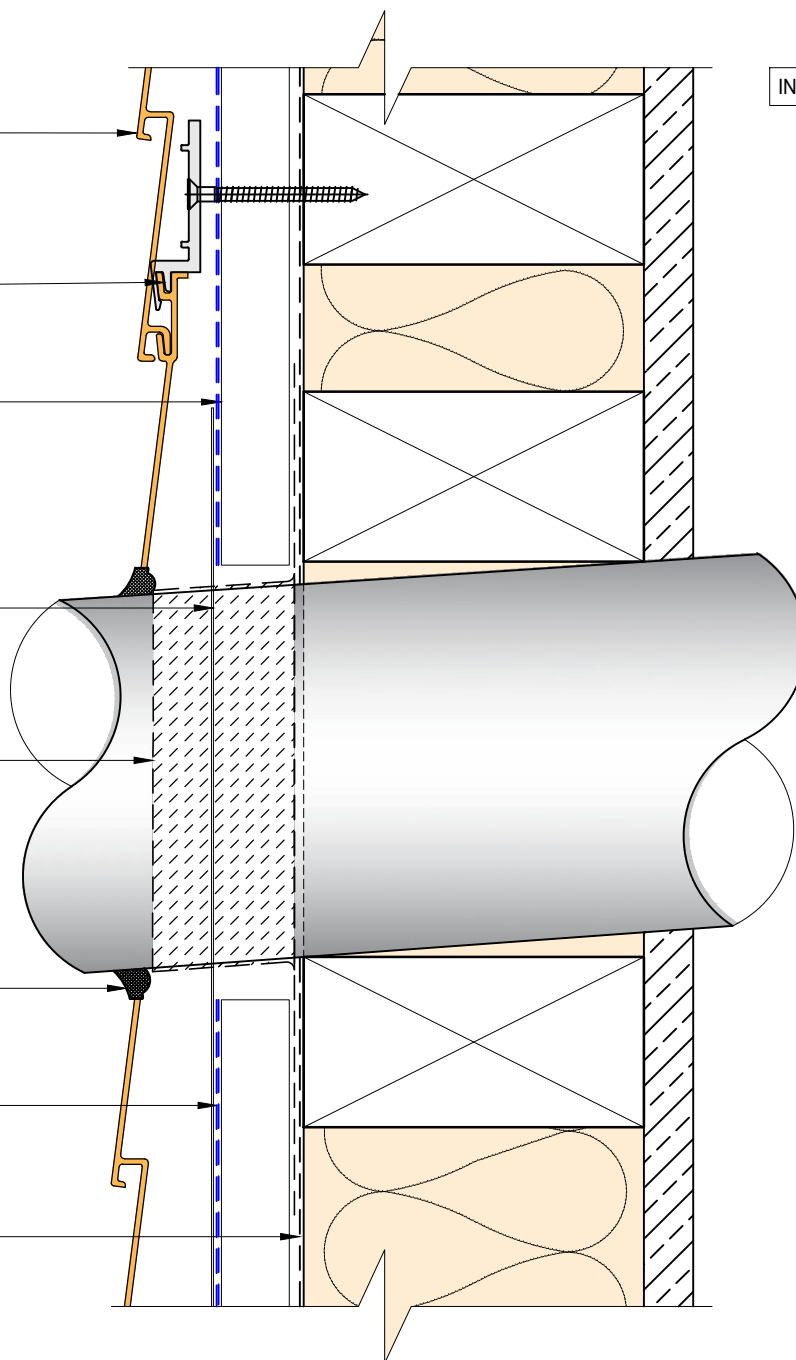
DPC concealed flashing barrier/separator down to Archimax "J" starter board

Flexible flashing tape

Sealant around pipe penetration

Archimax® strip isolator (between aluminium & treated timber battens)

Building underlay



EXTERIOR

INTERIOR

5mm compressible
foam tape, or use
sealant to seal the gap

Archimax® AM 018 end capping
cover part B (3)

Archimax® AM 016 capping
cover clip (4)

Archimax® AM 017 end capping cover
part A (5)

Fixing needs to be at the center so the
cover clip prevents contact with the
screw and avoid any problems with its
notch

5mm Drain Holes @ 30mm spacing

c/c
Countersunk screws

- for horizontal cladding above 4 meters, secure 1
screw at the top for every meter of width.
- for horizontal cladding above 6 meters, secure 1
screw at the top & middle for every meter of
width.

Horizontal battens

Archimax® AM 900 horizontal weatherboard
fixed with clip brackets @ 800mm max
centers with 1-10g x 65mm csk sq s.s. self
tapping screws through the cladding
battens (1)

Archimax® strip isolator (between
aluminium & treated timber battens)

Building underlay

NOTE:

1. Ideally, use 5mm compressible foam tape, or use sealant to seal the gap between soffit and Archimax cladding depending on the site situation.
2. For horizontal cladding more than 4 meters, secure 1 screw at the top for every meter of width. If it exceeds 6 meters, fix at both top and middle with one screw each.
4. Timber Cavity Batten at 800mm max spacing.
5. Secure the AM029 clip with 1 screw for standard use, or 2 screws for added support



Building underlay

Flexible flashing tape
over flashing

①

Archimax® AM 900 horizontal
weatherboard fixed with clip brackets @
800mm max centers with 1-10g x 65mm
csk sq s.s. self tapping screws through
the cladding battens

Flashing stop ends

Cavity vent strip

Head flashing

②

Archimax® AM 009 'J'
starter board (needs to be
aligned flush with cavity
batten)

Archimax® AM 009-2 soffit
starter board

Archimax® Cover Bead (apply sealant)

Countersunk screws (Direct fix)

99/97

20.76

45

5mm
Gap

10

Drip Edge

Archimax® AM soffit boards

①

②

5mm
gap

5mm Drain Holes @
30mm spacing c/c

30

Building underlay

①

Archimax® AM 900 horizontal
weatherboard fixed with clip brackets @
800mm max centers with 1-10g x 65mm
csk sq s.s. self tapping screws through
the cladding battens

NOTE:

1. Stop ends to be installed at flashing ends.
2. Soffit requires direct fixing without brackets.

Building underlay

Flexible flashing tape
over flashing

①
Archimax® AM 900 horizontal
weatherboard fixed with clip brackets @
800mm max centers with 1-10g x 65mm
csk sq s.s. self tapping screws through
the cladding battens

Cavity vent strip

Head flashing

②
Archimax® AM 009 'J'
starter board (needs to be
aligned flush with cavity
batten)

Archimax® AM 009-2 soffit
starter board

Archimax® Cover Bead (apply sealant)
Countersunk screws (Direct fix)

5mm
Gap

10
Drip Edge

① Archimax® AM soffit boards

⑦ ⑧ ⑨

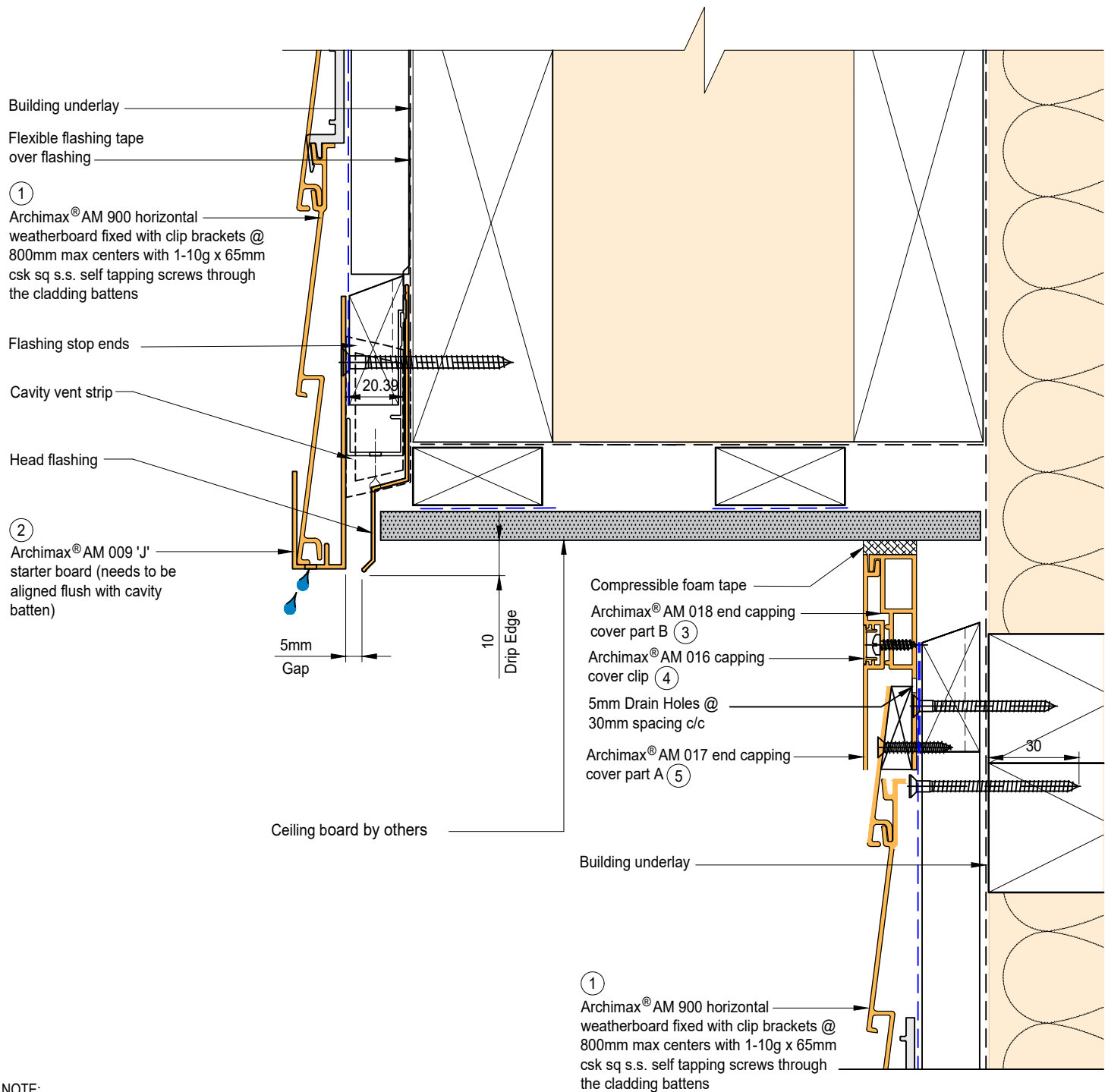
Archimax® AM 019 corner - Part A
AM 022 end capping cover - Part B
AM 023 corner cover clip

Building underlay

①
Archimax® AM 900 horizontal
weatherboard fixed with clip brackets @
800mm max centers with 1-10g x 65mm
csk sq s.s. self tapping screws through
the cladding battens

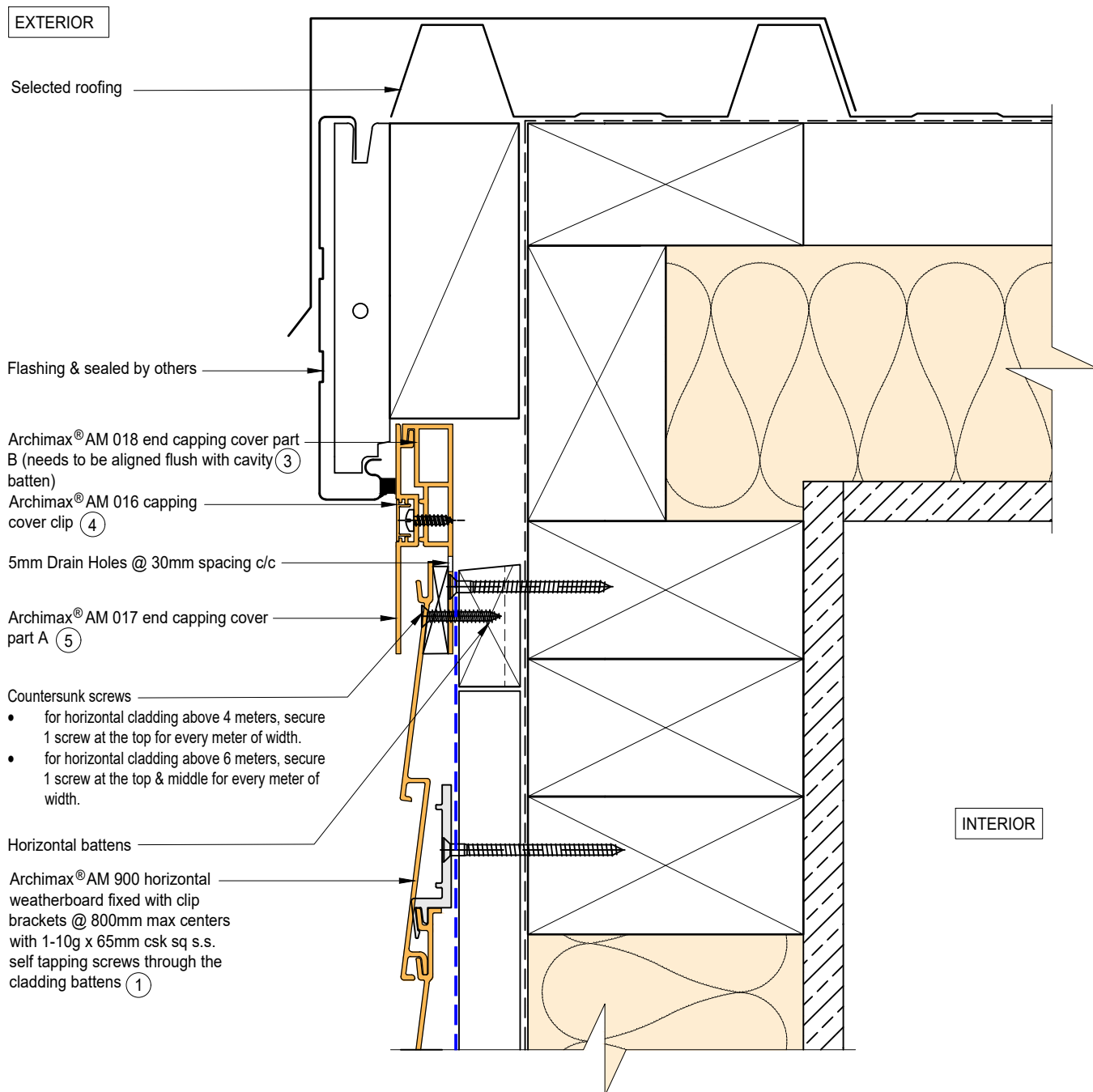
NOTE:

1. Stop ends to be installed at flashing ends.
2. Soffit requires direct fixing without brackets.
3. Timber Cavity Batten at 800mm max spacing.
4. Secure the AM029 clip with 1 screw for standard use, or 2 screws for added support



NOTE:
STOP ENDS TO BE INSTALLED AT FLASHING ENDS

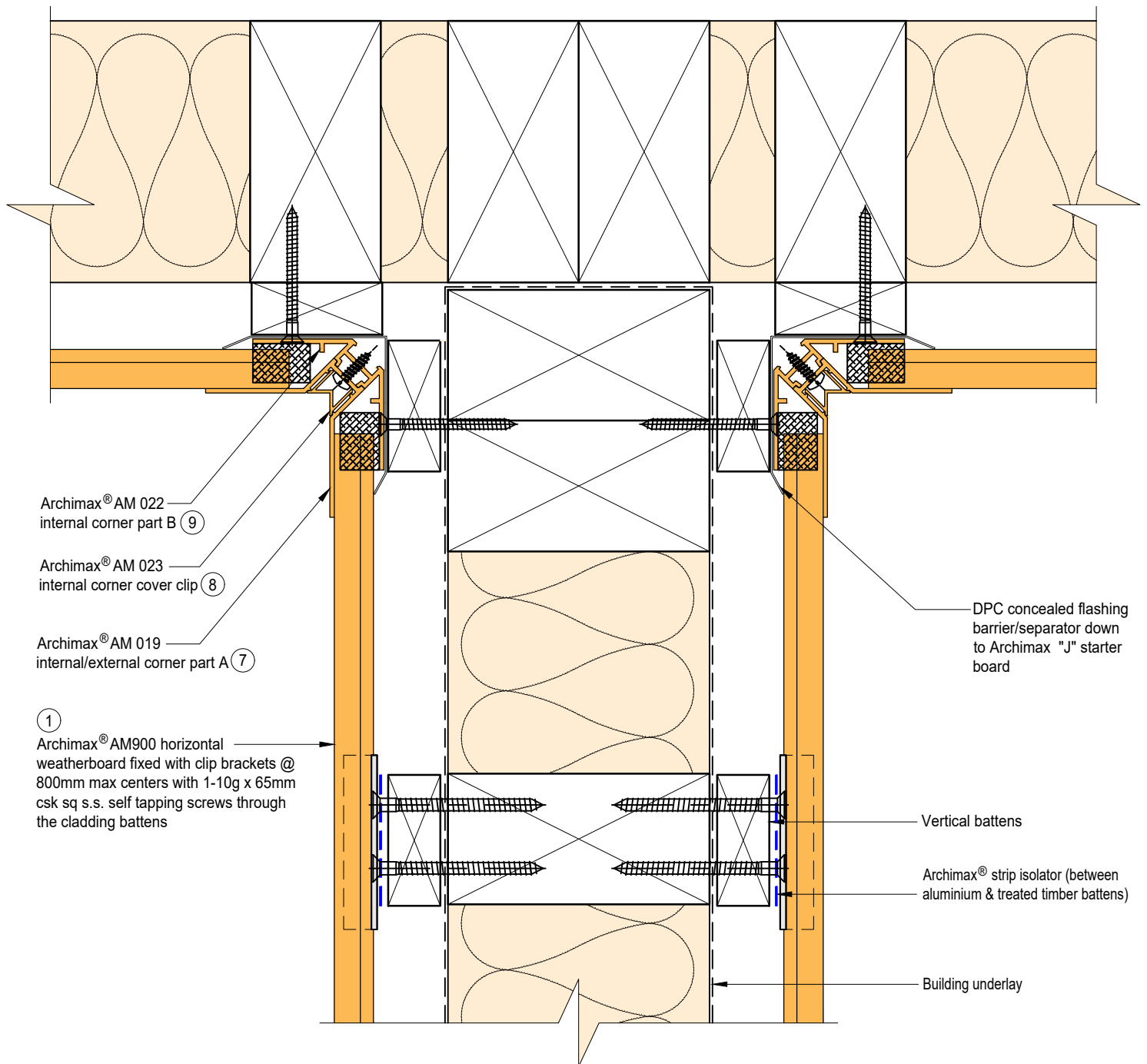


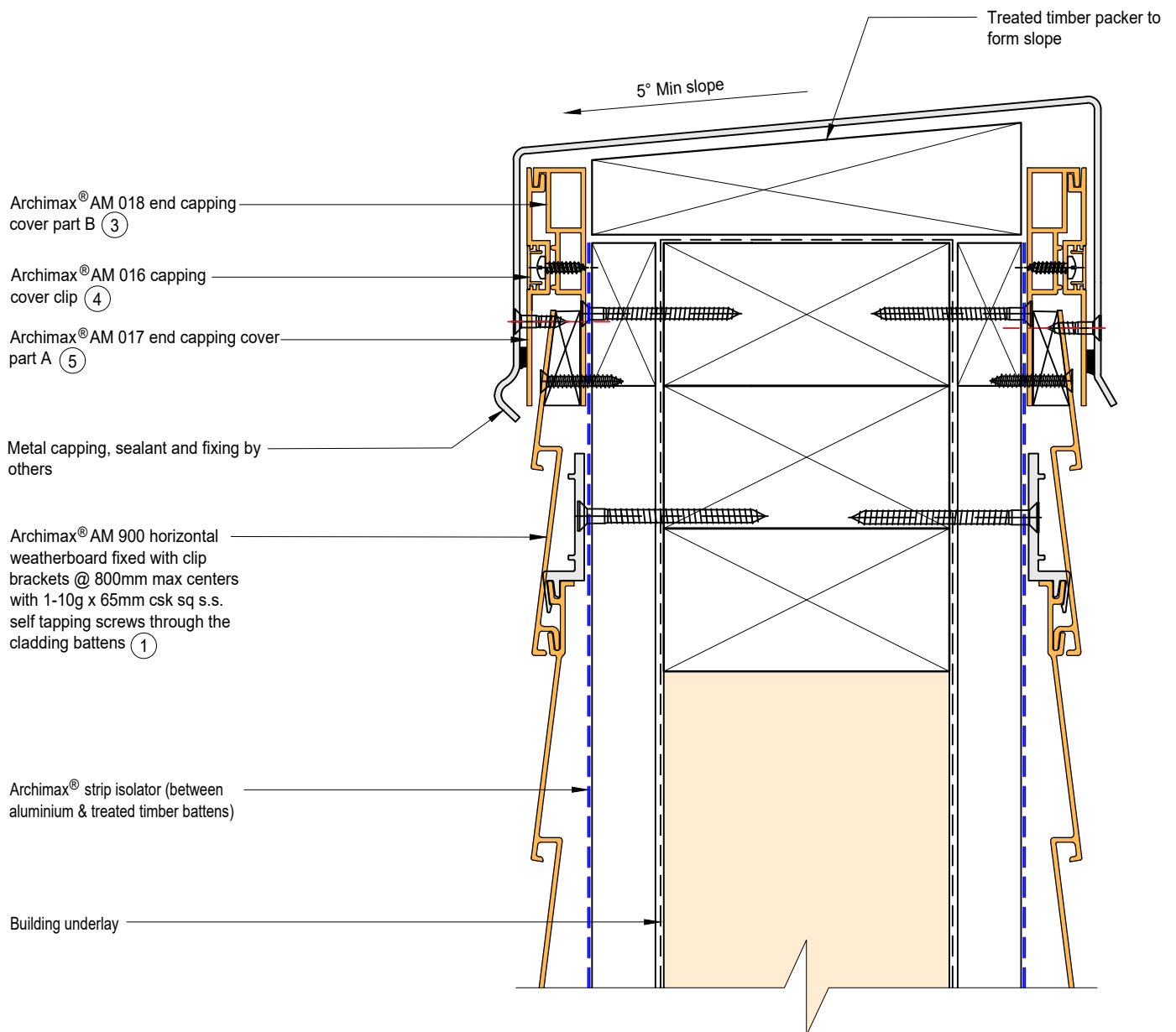


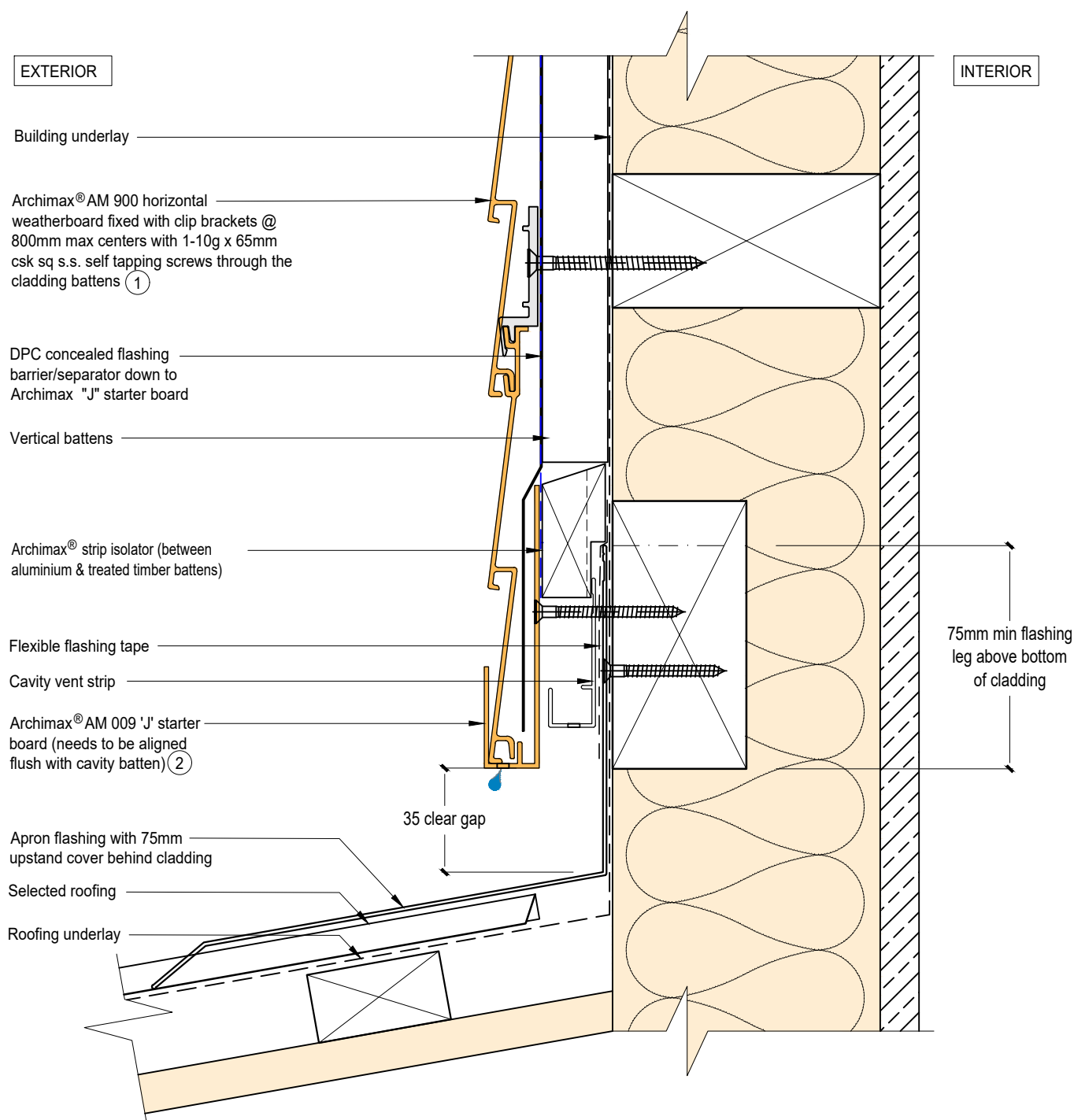
NOTE:

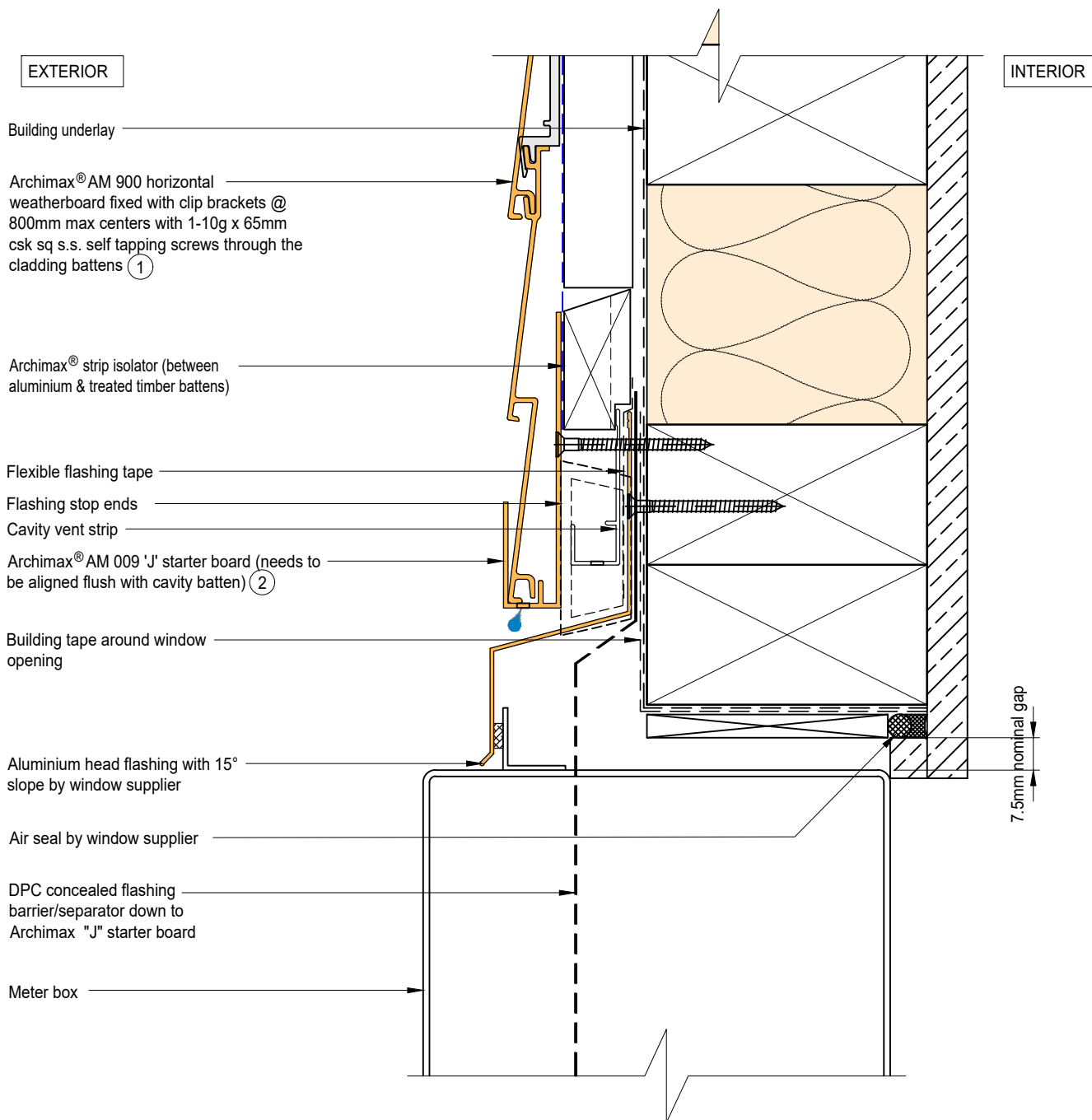
1. For horizontal cladding more than 4 meters, secure 1 screw at the top for every meter of width. If it exceeds 6 meters, fix at both top and middle with one screw each.





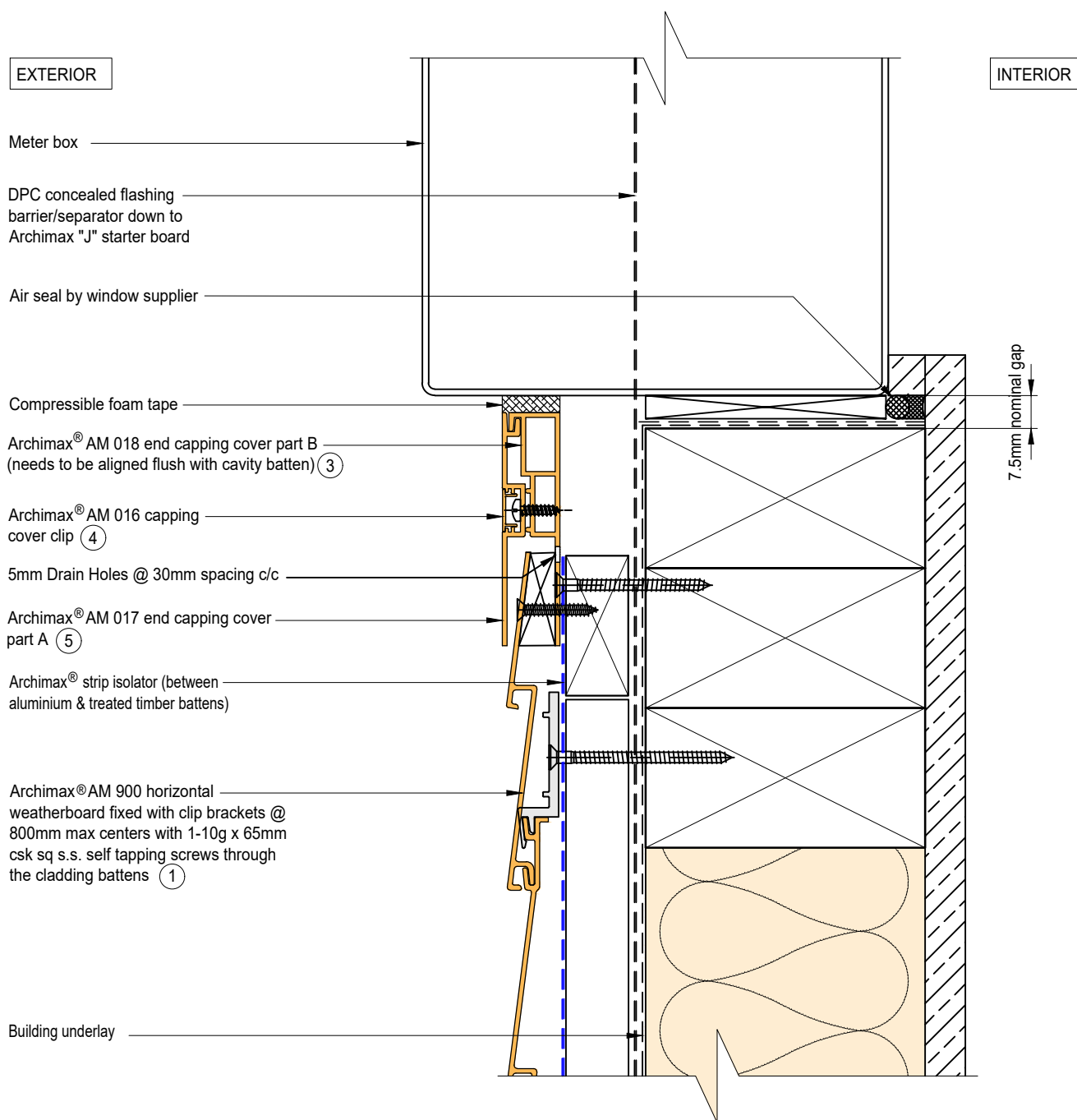


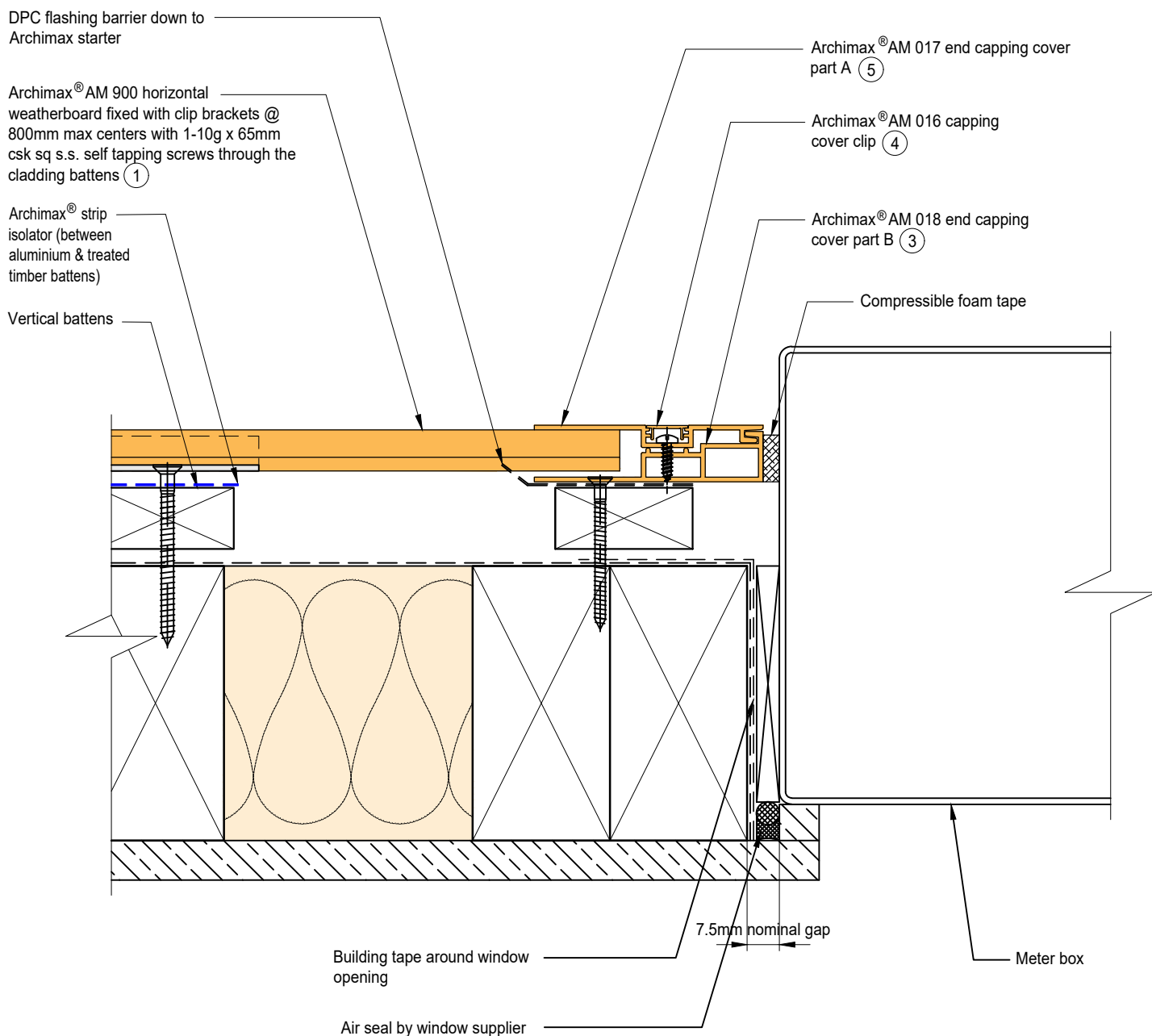




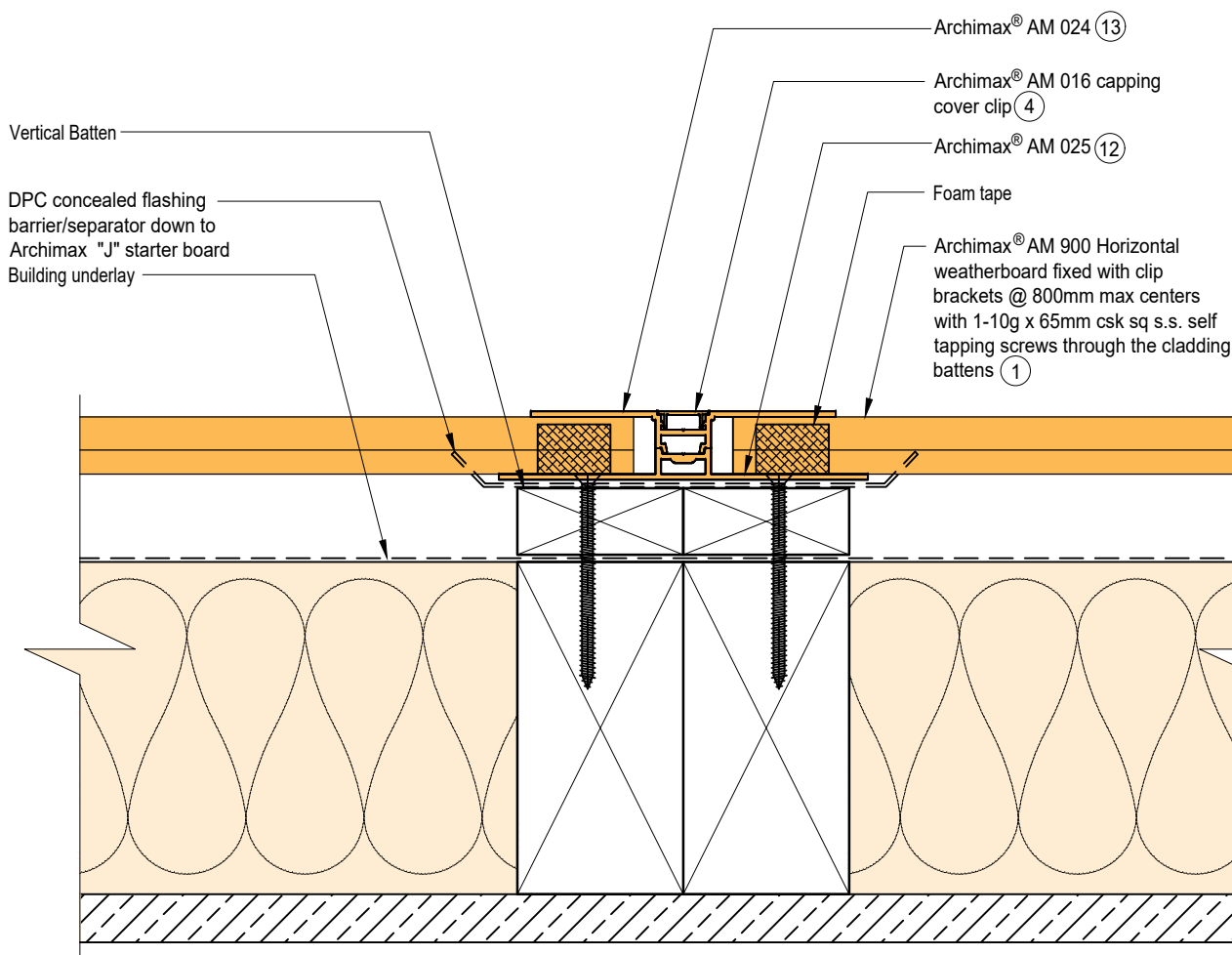
NOTE:
STOP ENDS TO BE INSTALLED AT FLASHING ENDS





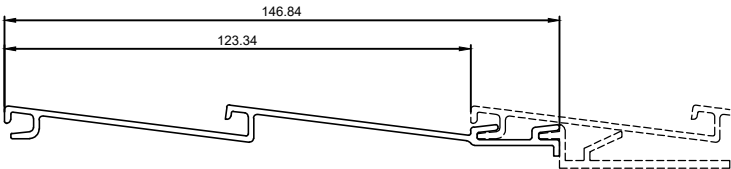
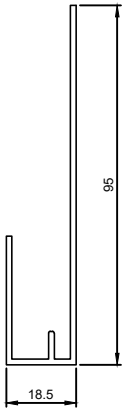
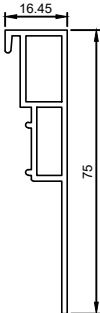
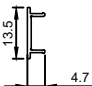
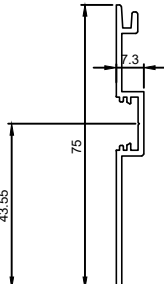
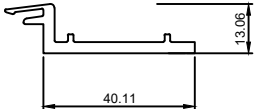
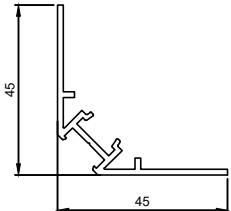
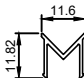
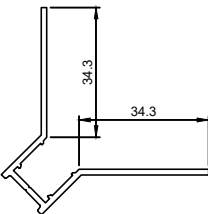
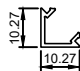
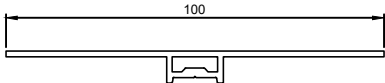
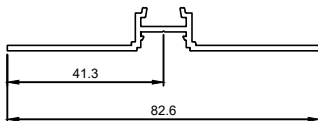


EXTERIOR



INTERIOR



<div> <div>1</div>  </div>				
AM 900 Archimax Horizontal Weatherboard				
<div>2</div> 	<div>3</div> 	<div>4</div> 	<div>5</div> 	<div>6</div> 
AM 009	AM 018	AM 016	AM 017	AM 050
"J" Starter Board	End capping part B	Jointer / Jamb / Sill capping cover clip	End Capping part A	Clip Bracket
<div>7</div> 	<div>8</div> 	<div>9</div> 		<div>11</div> 
AM 019	AM 023	AM 022		AM 020
Internal/External corner part A	Internal Corner cover clip	Internal Corner part B		External Corner cover clip
<div>12</div> 	<div>13</div> 			
AM 025 Jointer part A	AM 024 Jointer part B			