



ARCHIMAX

ALUMINIUM CLADDING SYSTEM

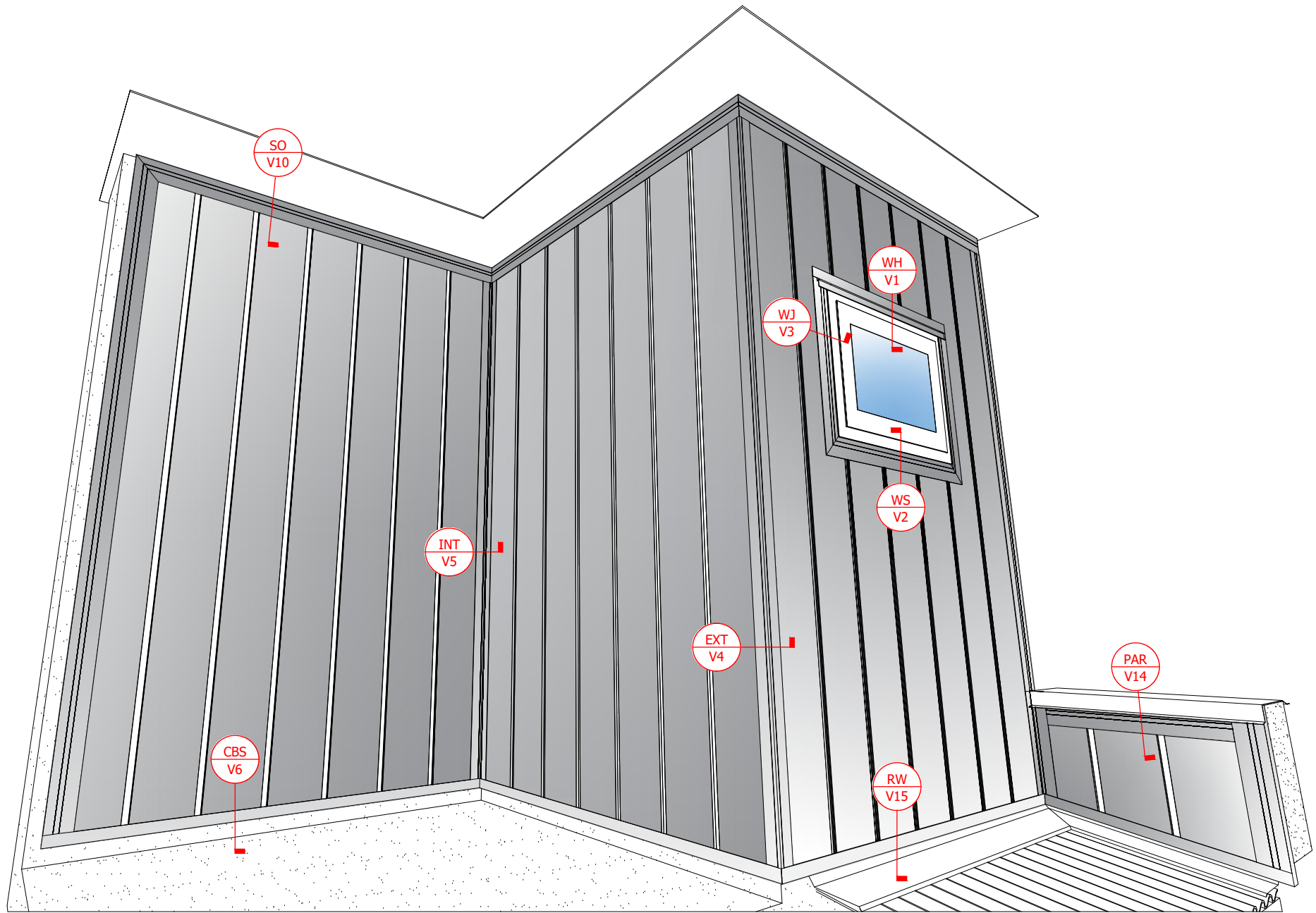
Creating more durable building envelopes

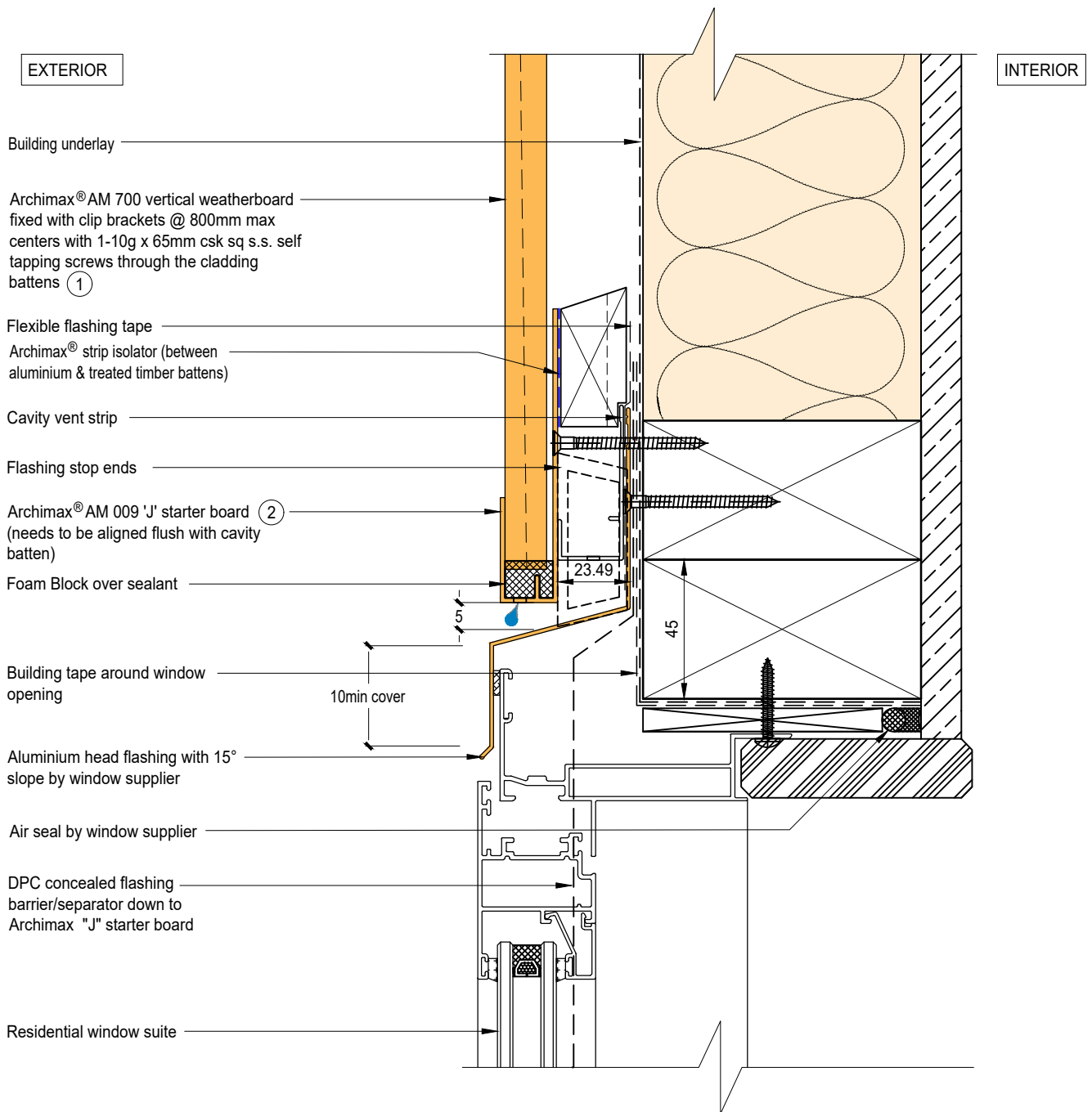
Archimax® Aluminium Cladding System AM700 Vertical Profile – Installation Details

Drawing No.	Rev.	Description
AM-WH-V1	E	Archimax® Window Head Detail
AM-WS-V2	E	Archimax® Window Sill Detail
AM-WJ-V3	E	Archimax® Window Jamb Detail
AM-EXT-V4	E	Archimax® External Corner Detail
AM-INT-V5	E	Archimax® Internal Corner Detail
AM-CBS-V6.1	E	Archimax® Concrete Floor "J" Starter Board Detail - Timber
AM-CBS-V6.2	E	Archimax® Concrete Floor "J" Starter Board Detail - Fire Wall
AM-HJ-V7	E	Archimax® Horizontal Joint Detail
AM-DJ-V8	E	Archimax® Deck Junction Detail
AM-PP-V9a	E	Archimax® Pipe Penetration - Plan View Detail
AM-PP-V9b	E	Archimax® Pipe Penetration - Section View Detail
AM-SO-V10	E	Archimax® Soffit Detail
AM-SO-V11.1	E	Archimax® Facia, Soffit & Wall Detail
AM-SO-V11.2	E	Archimax® Facia, Soffit & Wall (90° Soffit / Wall) Detail
AM-SO-V11.3	E	Archimax® Fascia, Board Soffit & Wall Detail
AM-NSO-V12	E	Archimax® Non - Soffit Detail
AM-BJ-V13	E	Archimax® Internal Corner Junction Detail
AM-PAR-V14	E	Archimax® Parapet with Cavity Detail
AM-RW-V15	E	Archimax® Lower Roof Wall Junction Detail
AM-MB-V16	E	Archimax® Meter Box Head Detail
AM-MB-V17	E	Archimax® Meter Box Sill Detail
AM-MB-V18	E	Archimax® Meter Box Jamb Detail



AM700
coverage: 140mm




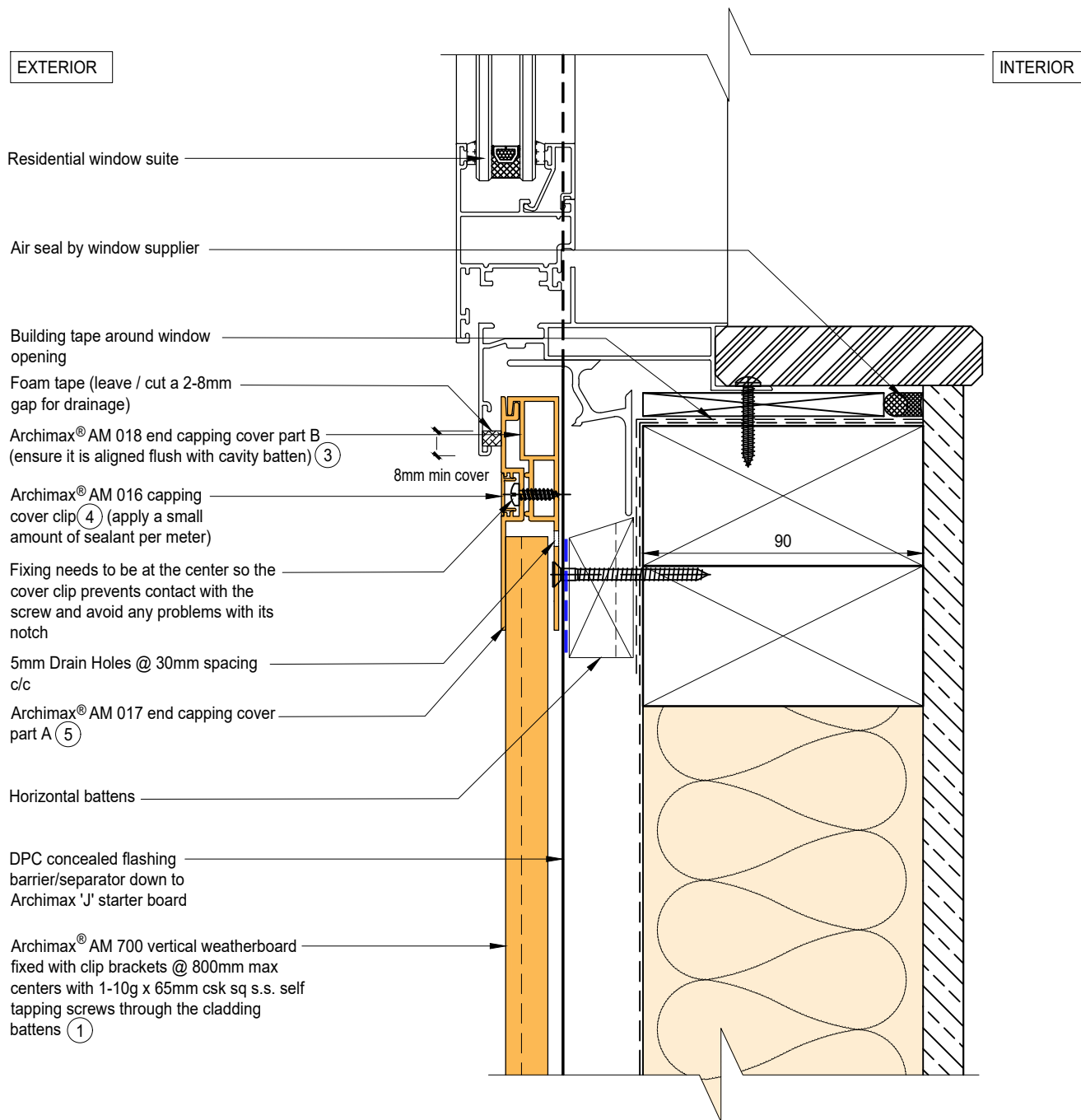


NOTE:

1. Stop ends to be installed at flashing ends.
2. Minimum Clearance between the AIR BARRIER and WINDOW JOINERY to be 45mm. Window Joinery should not be permanently fixed until cladding installed.
3. Sealant on each ends of the "J" starter board to prevent water going into cavity.
4. Timber Cavity Batten at 800mm max spacing.
5. Secure the AM029 clip with 1 screw for standard use, or 2 screws for added support




 <p>ARCHIMAX ALUMINIUM CLADDING SYSTEM <i>Creating more durable building envelopes</i> www.archimax.co.nz</p>	System AM700 - VERTICAL WEATHERBOARD	Detail ARCHIMAX® WINDOW HEAD DETAIL	Drawing No. AM-WH-V1	Rev. E
	<p>This drawing is the copyright of Archimax Limited. Modification of details for job specification requirements must be approved by Archimax Ltd. The building designer is ultimately responsible to ensure all building work is designed and constructed according to building code requirements, best code of practice industry guidelines. All components must be supplied by Archimax. Archimax reserves the right to alter or upgrade details at any time without prior notice.</p>			Scale 1:2



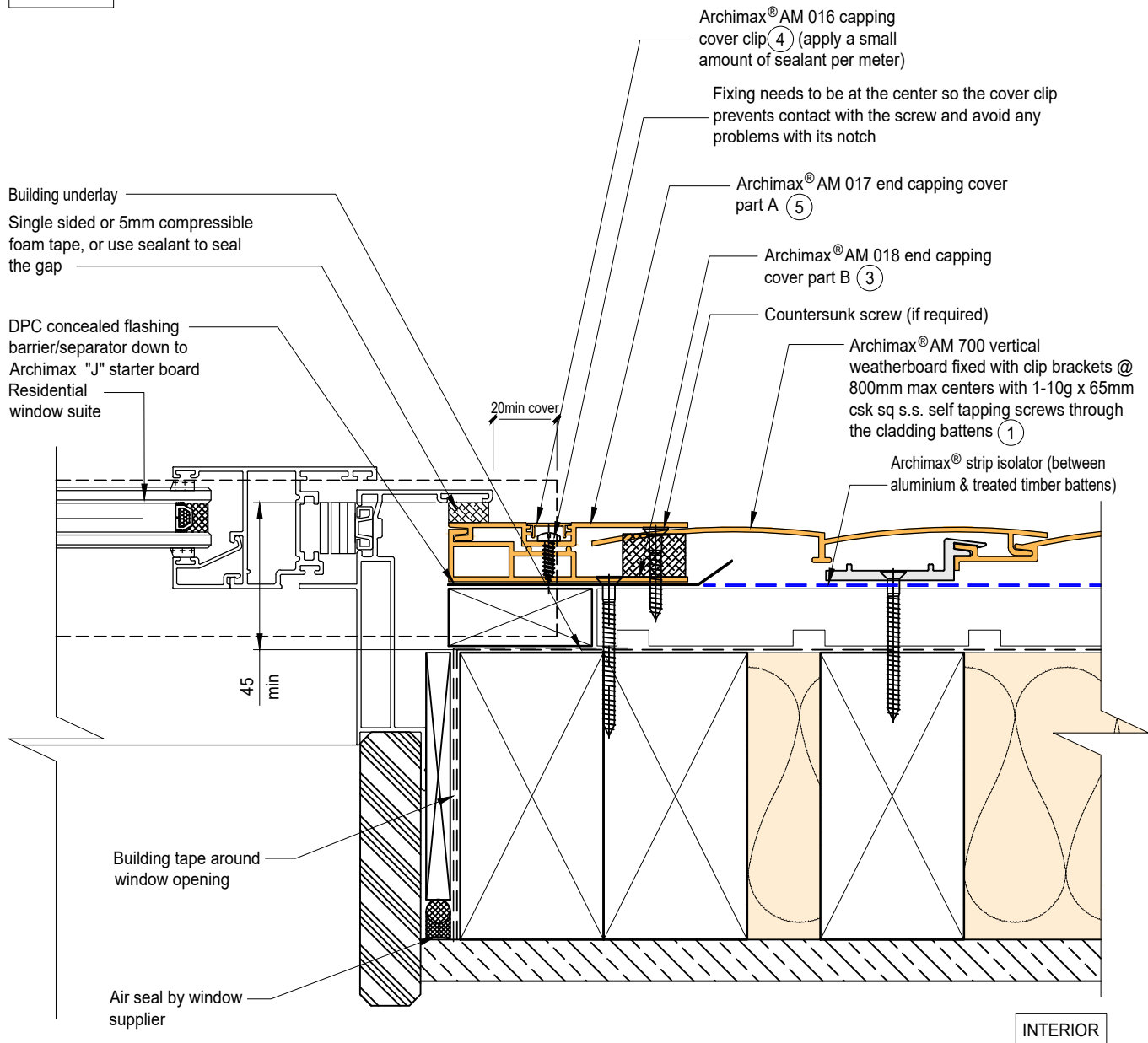
NOTE:

1. Minimum Clearance between the AIR BARRIER and WINDOW JOINERY to be 45mm. Window Joinery should not be permanently fixed until cladding installed.
2. Apply a small amount of sealant to every meter of the AM016 cover clip. Report to Archimax if AM016 cover clips are loose or tight. Do not force to install.
3. Timber Cavity Batten at 800mm max spacing.
4. Secure the AM029 clip with 1 screw for standard use, or 2 screws for added support



	System AM700 - VERTICAL WEATHERBOARD	Detail ARCHIMAX® WINDOW SILL DETAIL	Drawing No. Rev. AM-WS-V2 E			
	<p>This drawing is the copyright of Archimax Limited. Modification of details for job specification requirements must be approved by Archimax Ltd. The building designer is ultimately responsible to ensure all building work is designed and constructed according to building code requirements, best code of practice industry guidelines. All components must be supplied by Archimax. Archimax reserves the right to alter or upgrade details at any time without prior notice.</p>		<table border="1"> <tr> <td>Scale</td> <td>Date</td> </tr> <tr> <td>1:2</td> <td>NOV24</td> </tr> </table>	Scale	Date	1:2
Scale	Date					
1:2	NOV24					

EXTERIOR



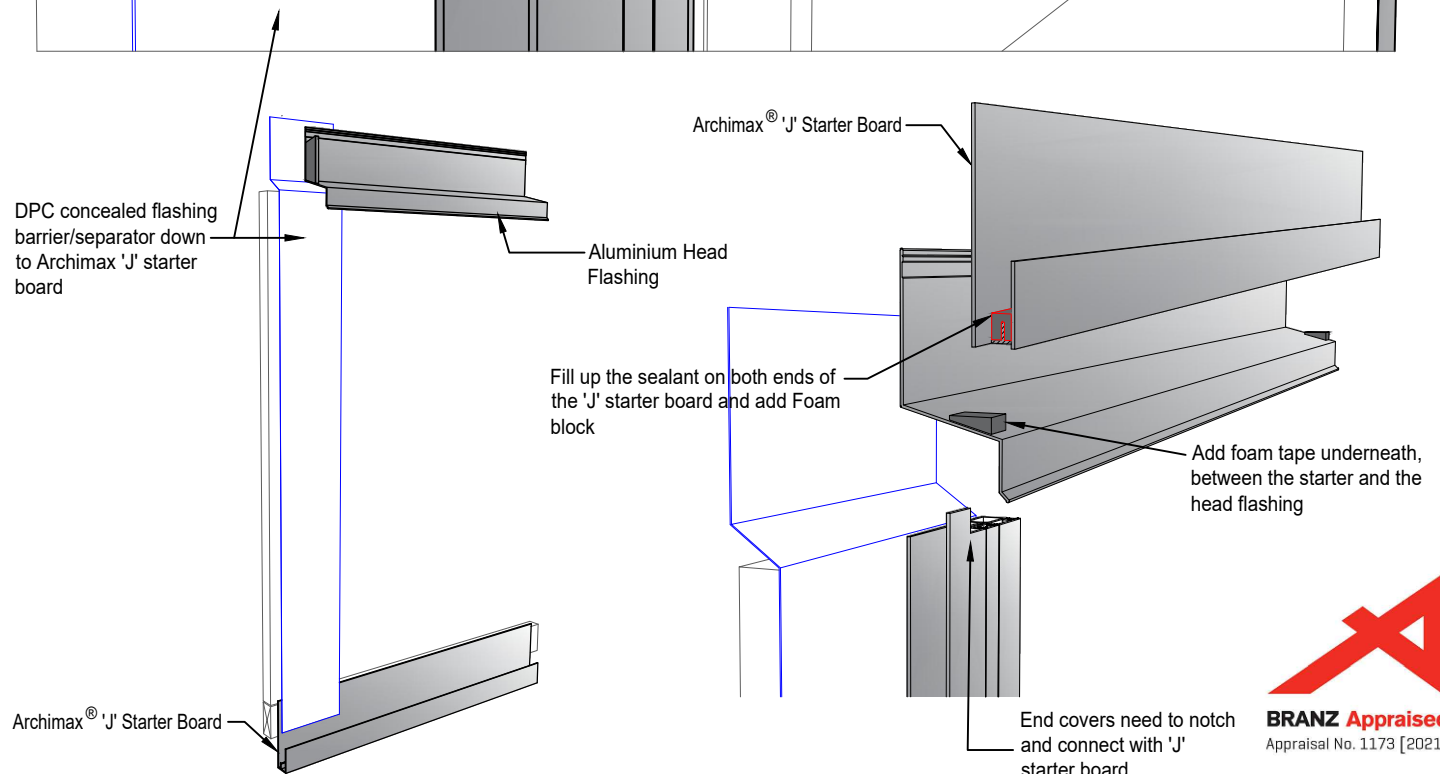
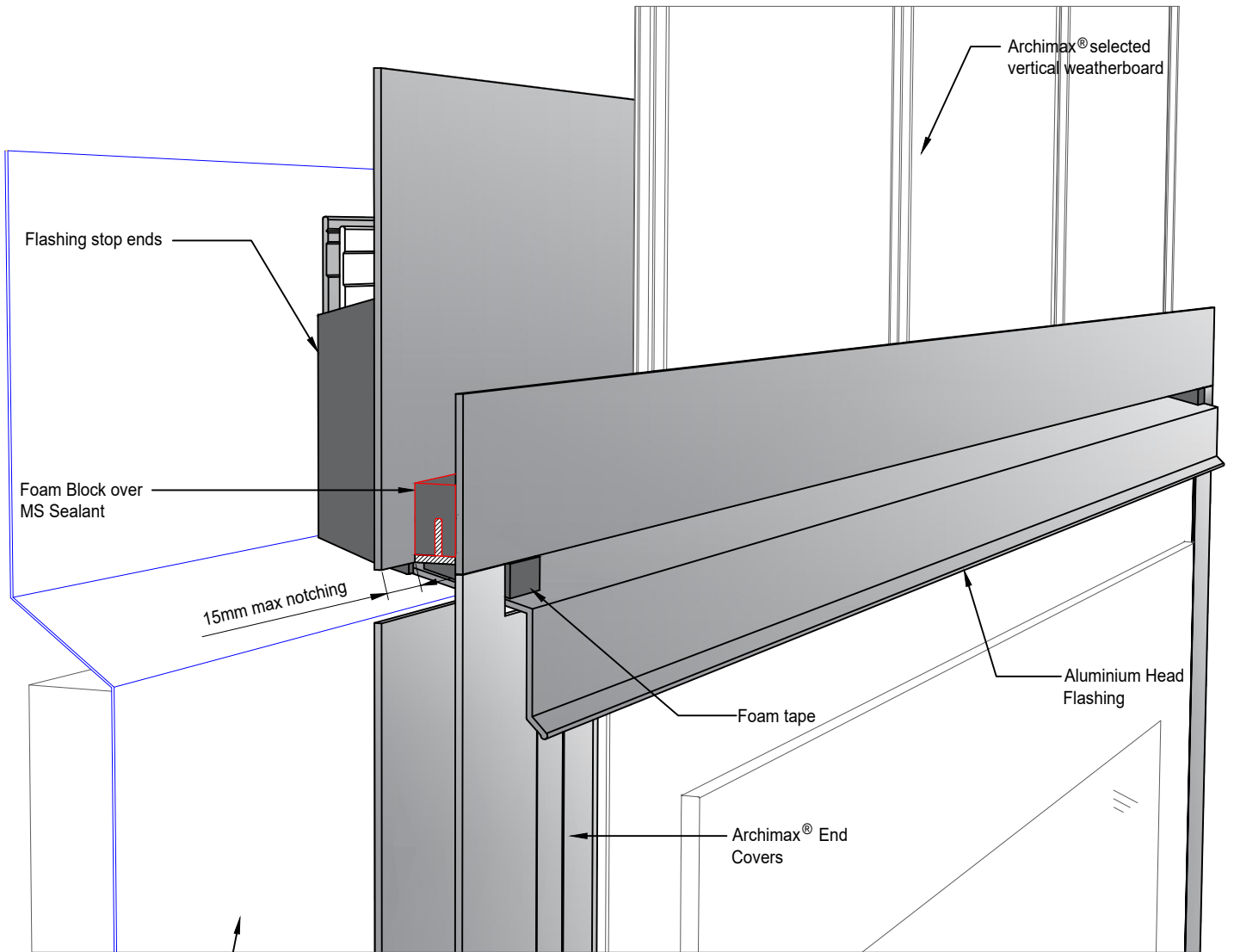
INTERIOR

NOTE:

1. Minimum Clearance between the AIR BARRIER and WINDOW JOINERY to be 45mm. Window Joinery should not be permanently fixed until cladding installed.
2. Ideally, use 5mm compressible foam tape, or use sealant to seal the gap between window frame and Archimax cladding depending on the site situation.
3. Apply a small amount of sealant to every meter of the AM016 cover clip. Report to Archimax if AM016 cover clips are loose or tight. Do not force to install.



 <p>ARCHIMAX ALUMINIUM CLADDING SYSTEM Creating more durable building envelopes www.archimax.co.nz</p>	System AM700 - VERTICAL WEATHERBOARD	Detail ARCHIMAX® WINDOW JAMB DETAIL	Drawing No. AM-WJ-V3	Rev. E
	<p>This drawing is the copyright of Archimax Limited. Modification of details for job specification requirements must be approved by Archimax Ltd. The building designer is ultimately responsible to ensure all building work is designed and constructed according to building code requirements, best code of practice industry guidelines. All components must be supplied by Archimax. Archimax reserves the right to alter or upgrade details at any time without prior notice.</p>			Scale 1:2



ARCHIMAX
ALUMINIUM CLADDING SYSTEM
Creating more durable building envelopes
www.archimax.co.nz

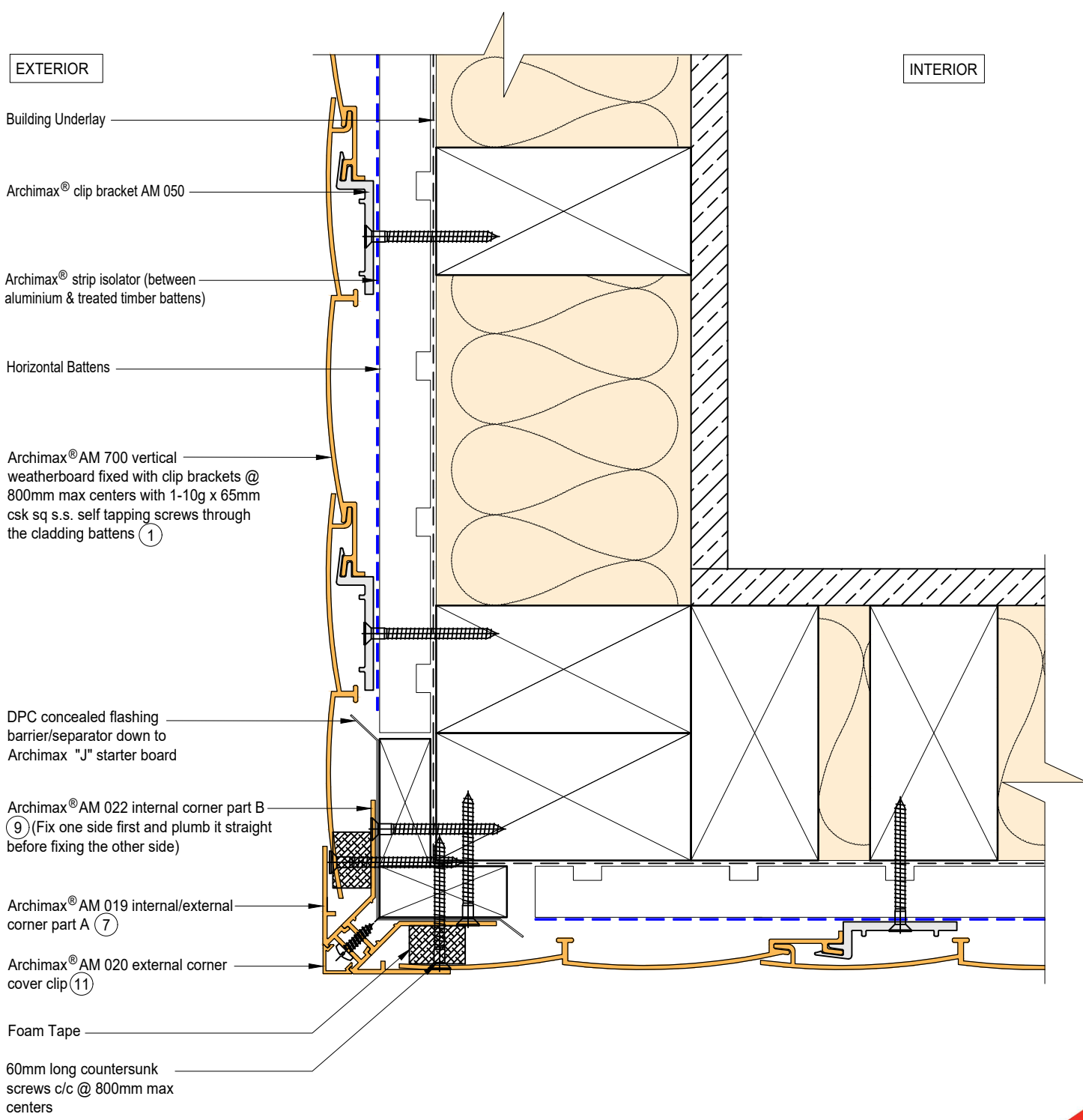
System
ARCHIMAX®

Detail
ARCHIMAX® WINDOW HEAD NOTCH & DPC BARRIER DETAILS

Drawing No. -- Rev. E

This drawing is the copyright of Archimax Limited. Modification of details for job specification requirements must be approved by Archimax Ltd. The building designer is ultimately responsible to ensure all building work is designed and constructed according to building code requirements, best code of practice industry guidelines. All components must be supplied by Archimax. Archimax reserves the right to alter or upgrade details at any time without prior notice.


Scale: NTS
Date: NOV24

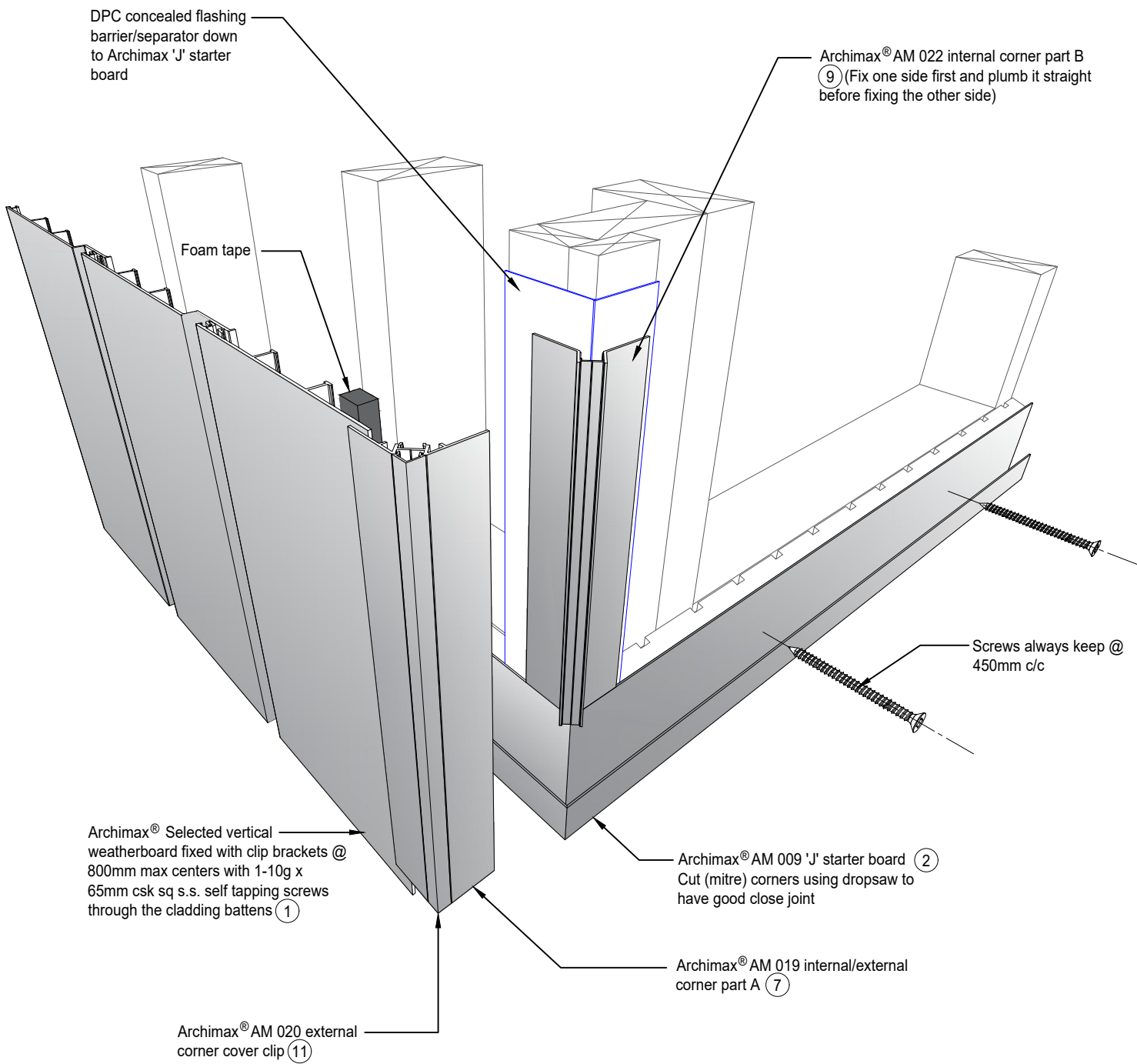


NOTE:

1. Fix the External Corner part B on one side first and plumb it straight before fixing the other side to avoid twisting.



 <p>ARCHIMAX ALUMINIUM CLADDING SYSTEM <i>Creating more durable building envelopes</i> www.archimax.co.nz</p>	<p>System AM700 - VERTICAL WEATHERBOARD</p>	<p>Detail ARCHIMAX® EXTERNAL CORNER DETAIL</p>	<p>Drawing No. Rev. AM-EXT-V4 E</p>
	<p>This drawing is the copyright of Archimax Limited. Modification of details for job specification requirements must be approved by Archimax Ltd. The building designer is ultimately responsible to ensure all building work is designed and constructed according to building code requirements, best code of practice industry guidelines. All components must be supplied by Archimax. Archimax reserves the right to alter or upgrade details at any time without prior notice.</p>		<p>Scale Date 1:2 NOV24</p>



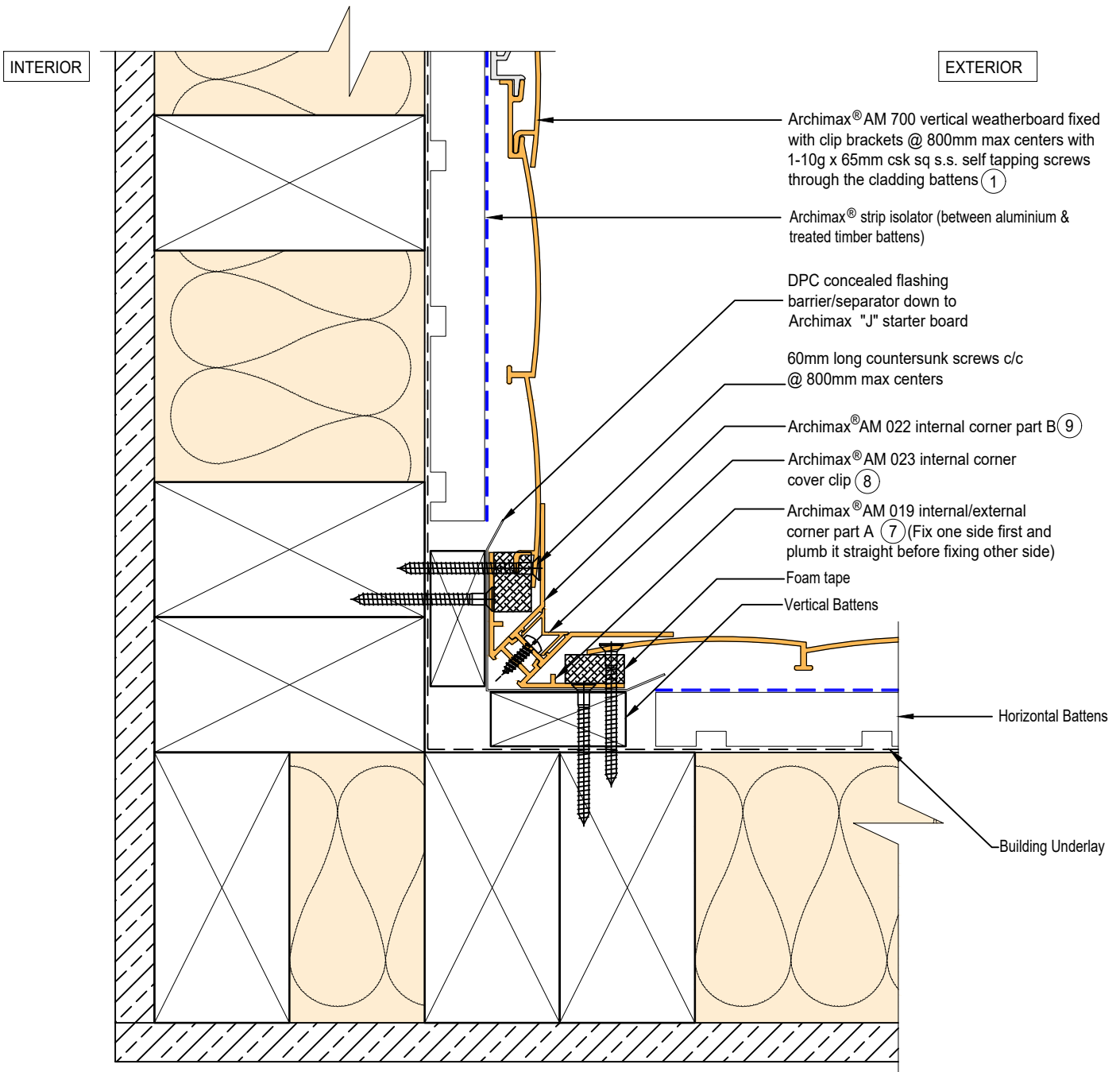
ARCHIMAX
ALUMINIUM CLADDING SYSTEM
Creating more durable building envelopes
www.archimax.co.nz


System
ARCHIMAX®

This drawing is the copyright of Archimax Limited. Modification of details for job specification requirements must be approved by Archimax Ltd. The building designer is ultimately responsible to ensure all building work is designed and constructed according to building code requirements, best code of practice industry guidelines. All components must be supplied by Archimax. Archimax reserves the right to alter or upgrade details at any time without prior notice.

Detail
ARCHIMAX® VERTICAL ON CAVITY
TYPICAL CORNER ASSEMBLY

Drawing No.	Rev.
--	E
Scale	Date
NTS	NOV24



 <p>ARCHIMAX ALUMINIUM CLADDING SYSTEM <i>Creating more durable building envelopes</i> www.archimax.co.nz</p>	System AM700 - VERTICAL WEATHERBOARD	Detail ARCHIMAX® INTERNAL CORNER DETAIL	Drawing No. Rev. AM-INT-V5 E
	<small>This drawing is the copyright of Archimax Limited. Modification of details for job specification requirements must be approved by Archimax Ltd. The building designer is ultimately responsible to ensure all building work is designed and constructed according to building code requirements, best code of practice industry guidelines. All components must be supplied by Archimax. Archimax reserves the right to alter or upgrade details at any time without prior notice.</small>		Scale Date 1:2 NOV24

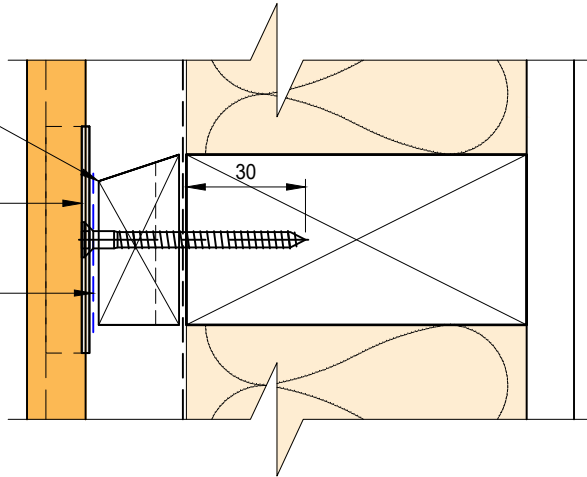
EXTERIOR

INTERIOR

Castellated timber batten (Horizontal)

Archimax® clip bracket AM 029

Archimax® strip isolator (between aluminium & treated timber battens)



Building underlay

Ventilation path

① Archimax® AM 700 vertical weatherboard fixed with clip brackets @ 800mm max centers with 1-10g x 65mm csk sq s.s. self tapping screws through the cladding battens

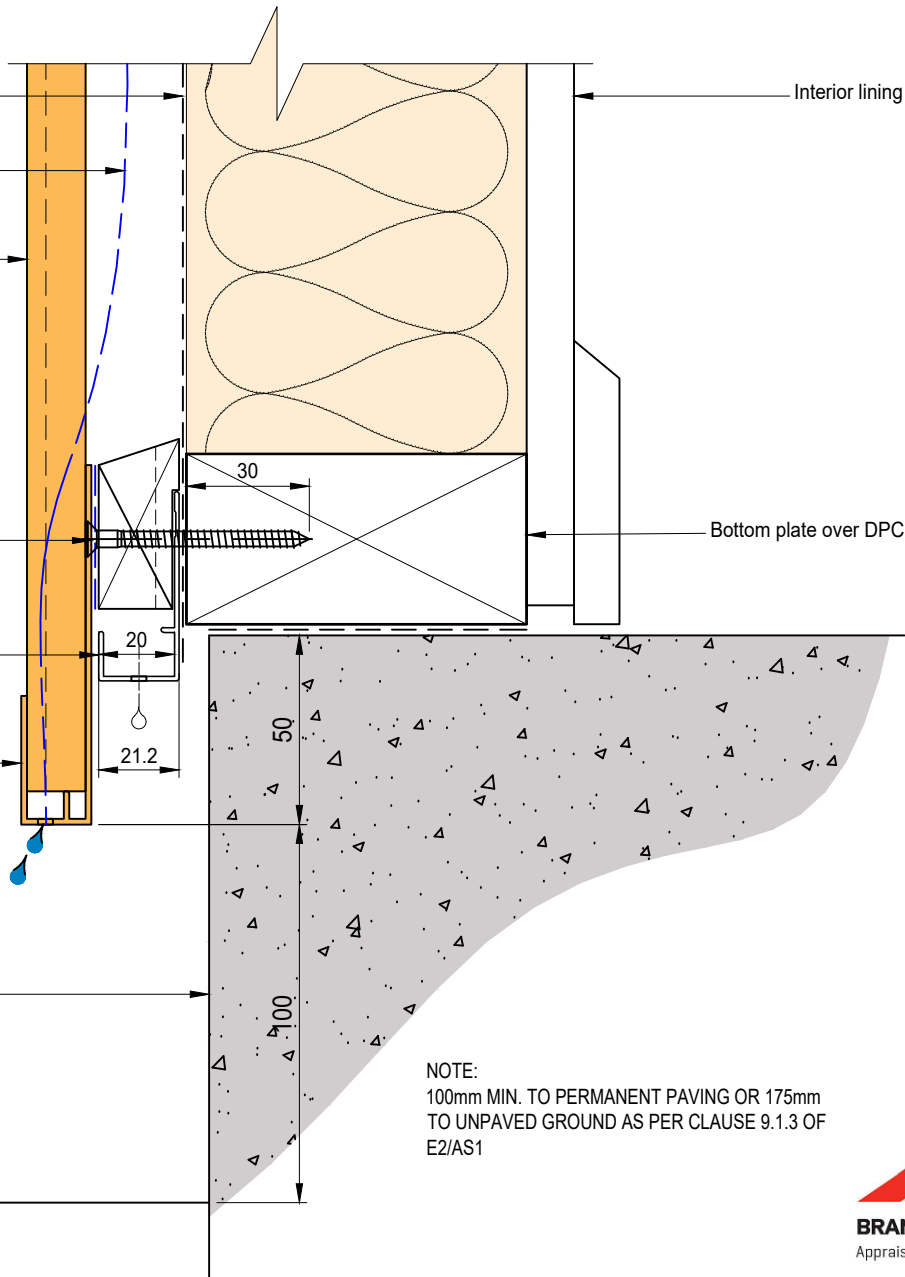
Starter Board screws always keep @ spacing of 450mm c/c

Cavity vent strip (By others)

② Archimax® AM 009 'J' starter board (needs to be aligned flush with cavity batten)

Concrete slab or brickwork (By others)

Finish ground level



NOTE:
100mm MIN. TO PERMANENT PAVING OR 175mm TO UNPAVED GROUND AS PER CLAUSE 9.1.3 OF E2/AS1



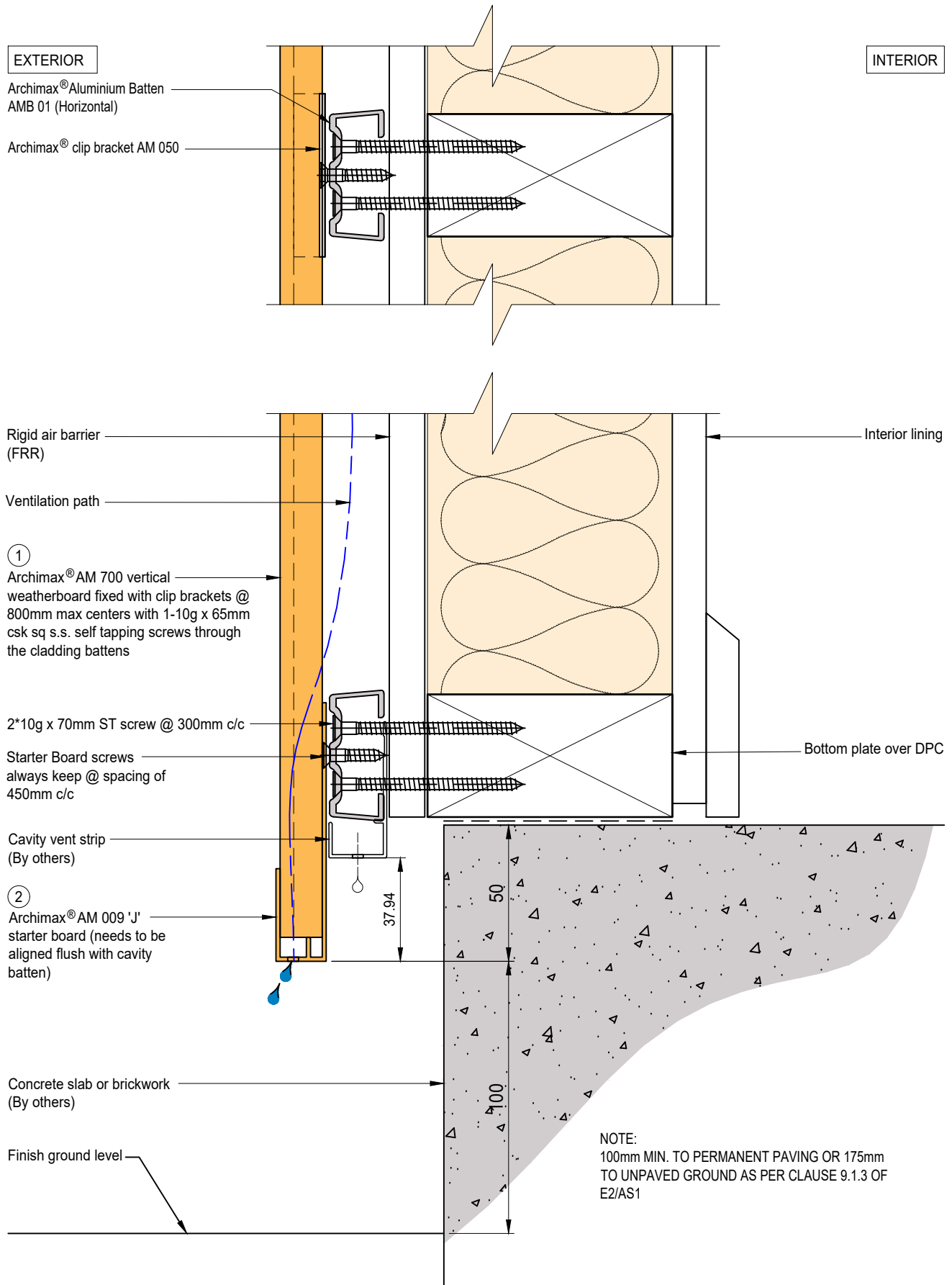
System
AM700 - VERTICAL WEATHERBOARD

Detail
ARCHIMAX® CONCRETE FLOOR "J" STARTER BOARD DETAIL - TIMBER

Drawing No. Rev.
AM-CBS-V6.1 E

This drawing is the copyright of Archimax Limited. Modification of details for job specification requirements must be approved by Archimax Ltd. The building designer is ultimately responsible to ensure all building work is designed and constructed according to building code requirements, best code of practice industry guidelines. All components must be supplied by Archimax. Archimax reserves the right to alter or upgrade details at any time without prior notice.

Scale Date
1:2 NOV24



EXTERIOR

INTERIOR

Building underlay

Archimax® AM 700 vertical weatherboard fixed with clip brackets @ 800mm max centers with 1-10g x 65mm csk sq s.s. self tapping screws through the cladding battens ①

Flexible flashing tape

Archimax® strip isolator (between aluminium & treated timber battens)

Cavity vent strip

Archimax AM 009 'J' starter board ② (needs to be aligned flush with cavity batten)

Inter-Storey flashing stop ends

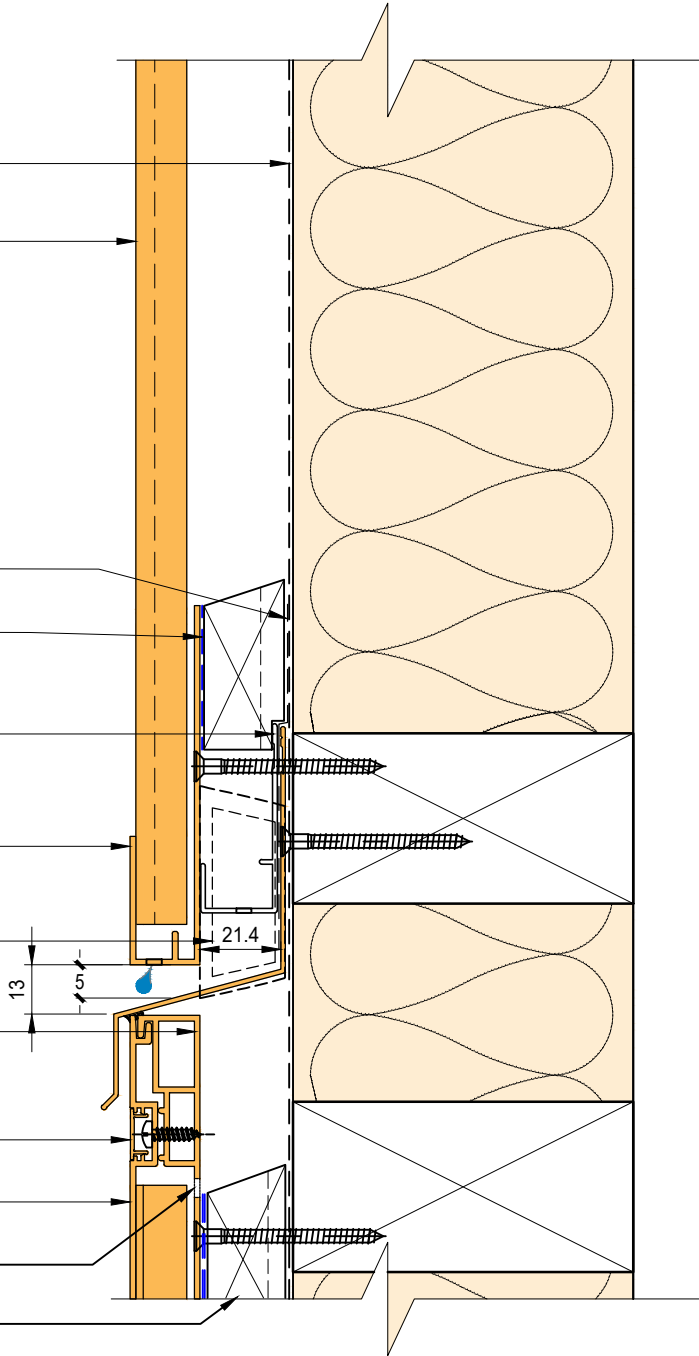
Archimax® AM 018 end capping cover part B (needs to be aligned flush with cavity batten) ③

Archimax® AM 016 capping cover clip ④ (apply a small amount of sealant per meter)

Archimax® AM 017 end capping cover part A ⑤

5mm Drain Holes @ 30mm spacing c/c

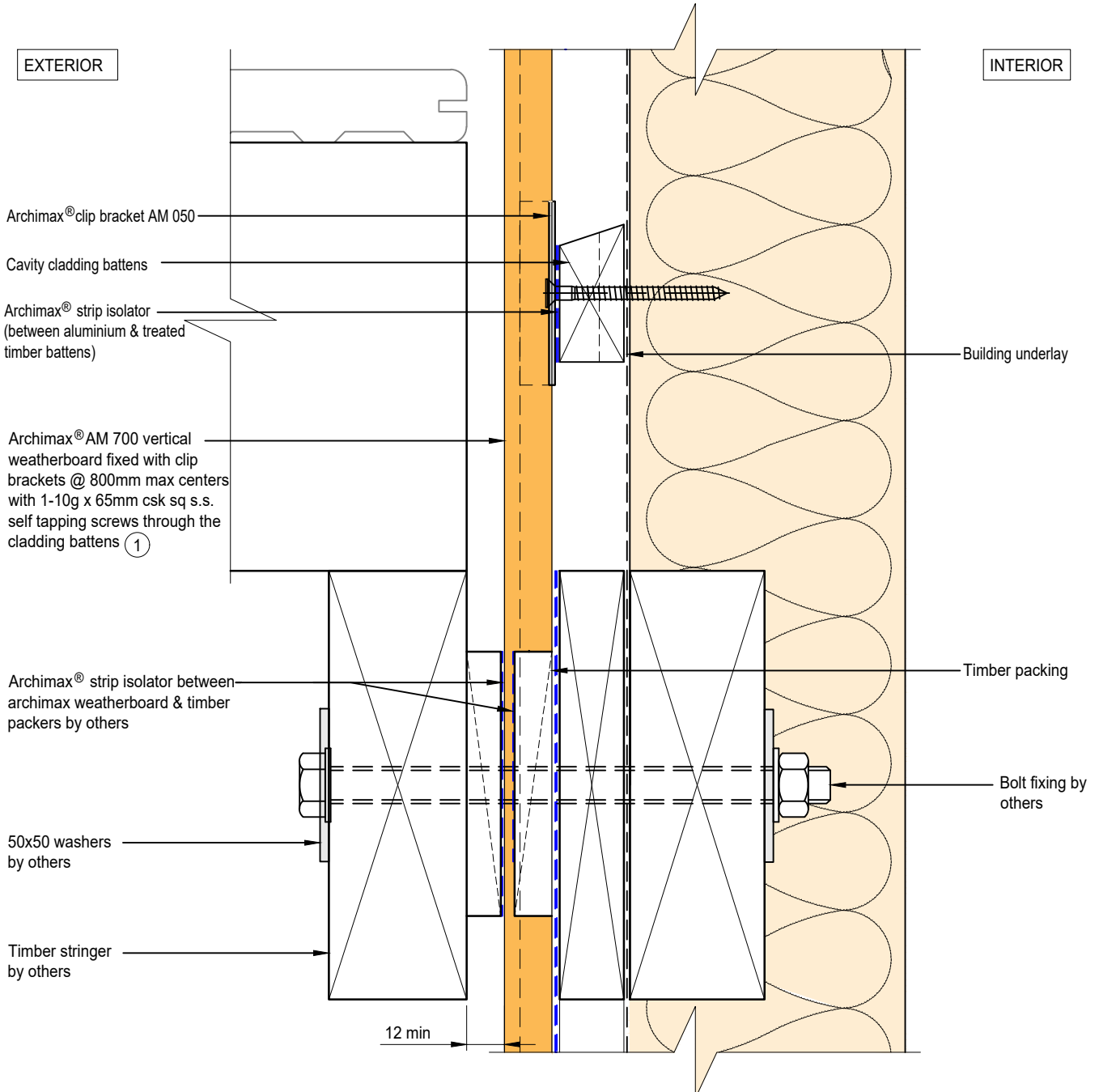
Horizontal battens



NOTE:
STOP ENDS TO BE INSTALLED AT INTER-STOREY FLASHING ENDS



System AM700 - VERTICAL WEATHERBOARD	Detail ARCHIMAX® HORIZONTAL JOINT DETAIL	Drawing No. AM-HJ-V7	Rev. E
This drawing is the copyright of Archimax Limited. Modification of details for job specification requirements must be approved by Archimax Ltd. The building designer is ultimately responsible to ensure all building work is designed and constructed according to building code requirements, best code of practice industry guidelines. All components must be supplied by Archimax. Archimax reserves the right to alter or upgrade details at any time without prior notice.		Scale 1:2	Date NOV24




ARCHIMAX
 ALUMINIUM CLADDING SYSTEM
Creating more durable building envelopes
 www.archimax.co.nz

System
AM700 - VERTICAL WEATHERBOARD

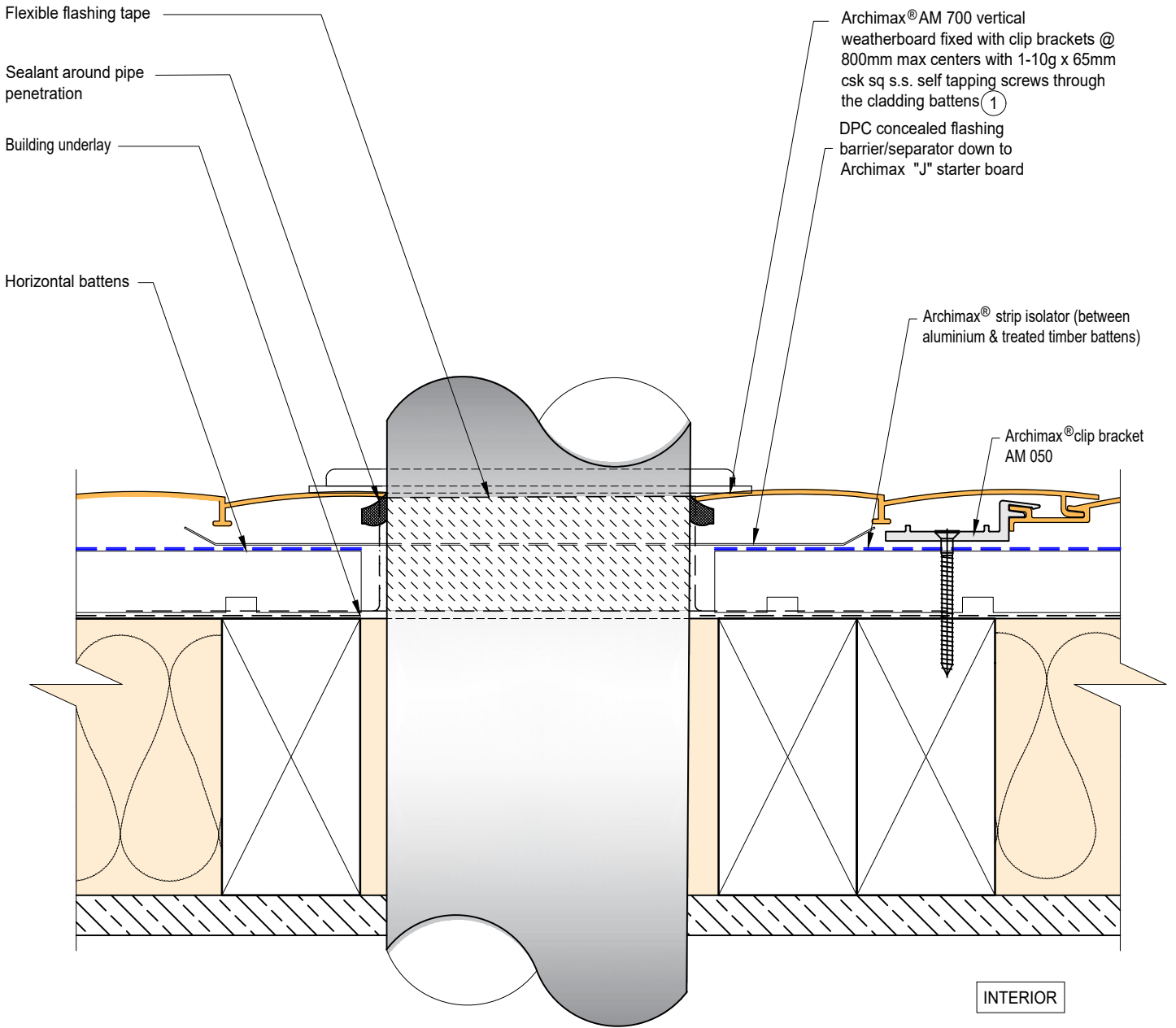
Detail
ARCHIMAX® DECK JUNCTION DETAIL

Drawing No. Rev.
AM-DJ-V8 E

This drawing is the copyright of Archimax Limited. Modification of details for job specification requirements must be approved by Archimax Ltd. The building designer is ultimately responsible to ensure all building work is designed and constructed according to building code requirements, best code of practice industry guidelines. All components must be supplied by Archimax. Archimax reserves the right to alter or upgrade details at any time without prior notice.

Scale Date
1:2 NOV24

EXTERIOR



INTERIOR



BRANZ Appraised
Appraisal No. 1173 [2021]

EXTERIOR

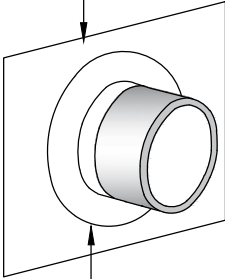
INTERIOR

Archimax® AM 700 vertical weatherboard fixed with clip brackets @ 800mm max centers with 1-10g x 65mm csk sq s.s. self tapping screws through the cladding battens ①

Archimax® clip bracket AM 050

Horizontal battens

DPC concealed flashing barrier/separator down to Archimax "J" starter board



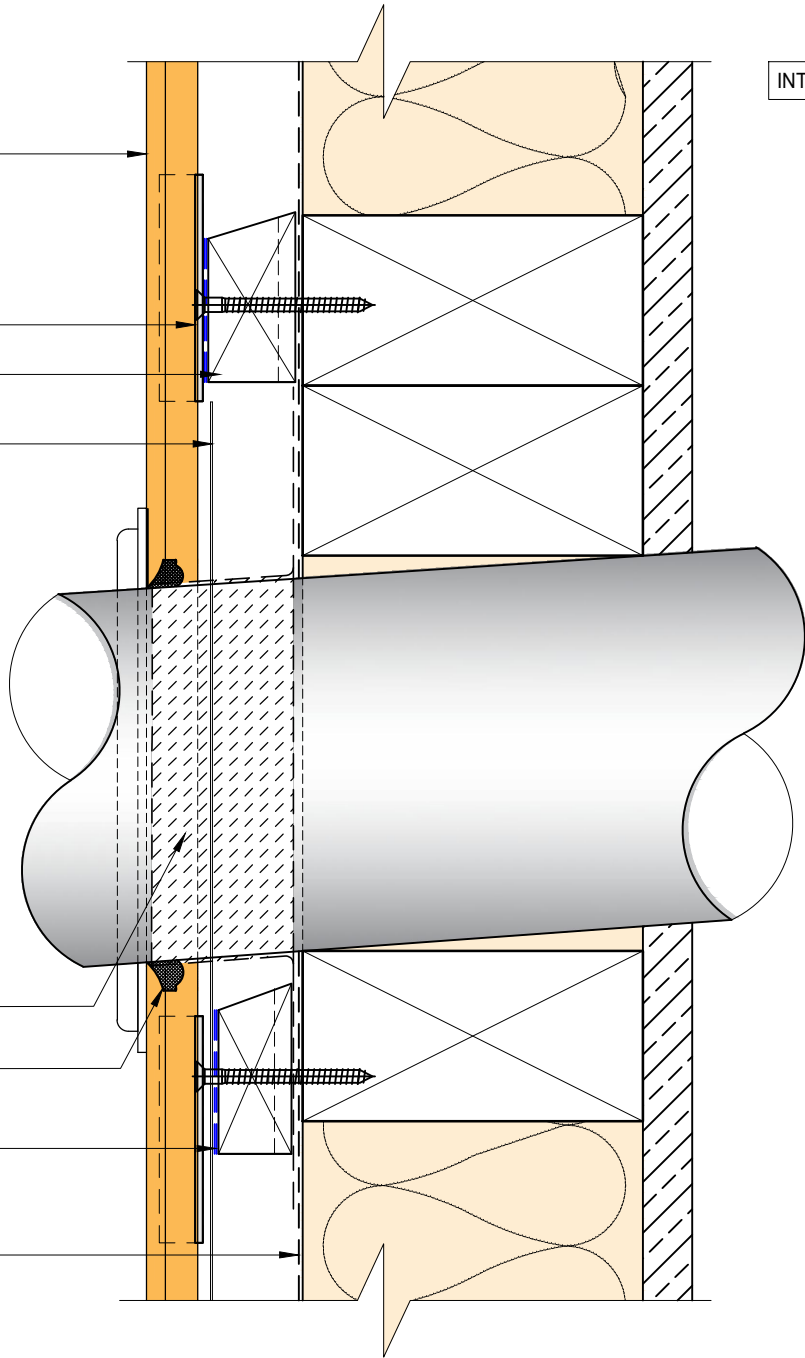
Pipe cover flange bed sealed to Archimax Cladding by others

Flexible flashing tape

Sealant around pipe penetration

Archimax® strip isolator (between aluminium & treated timber battens)

Building underlay



BRANZ Appraised
Appraisal No. 1173 [2021]

EXTERIOR

INTERIOR

5mm compressible foam tape, or use sealant to seal the gap

Archimax® AM 018 end capping cover part B (3)

Archimax® AM 016 capping cover clip (4)

Archimax® AM 017 end capping cover part A (5)

Fixing needs to be at the center so the cover clip prevents contact with the screw and avoid any problems with its notch

5mm Drain Holes @ 30mm spacing c/c

Countersunk screws

- for vertical cladding above 4 meters, secure 1 screw at the top for every meter of width.
- for vertical cladding above 6 meters, secure 1 screw at the top & middle for every meter of width.

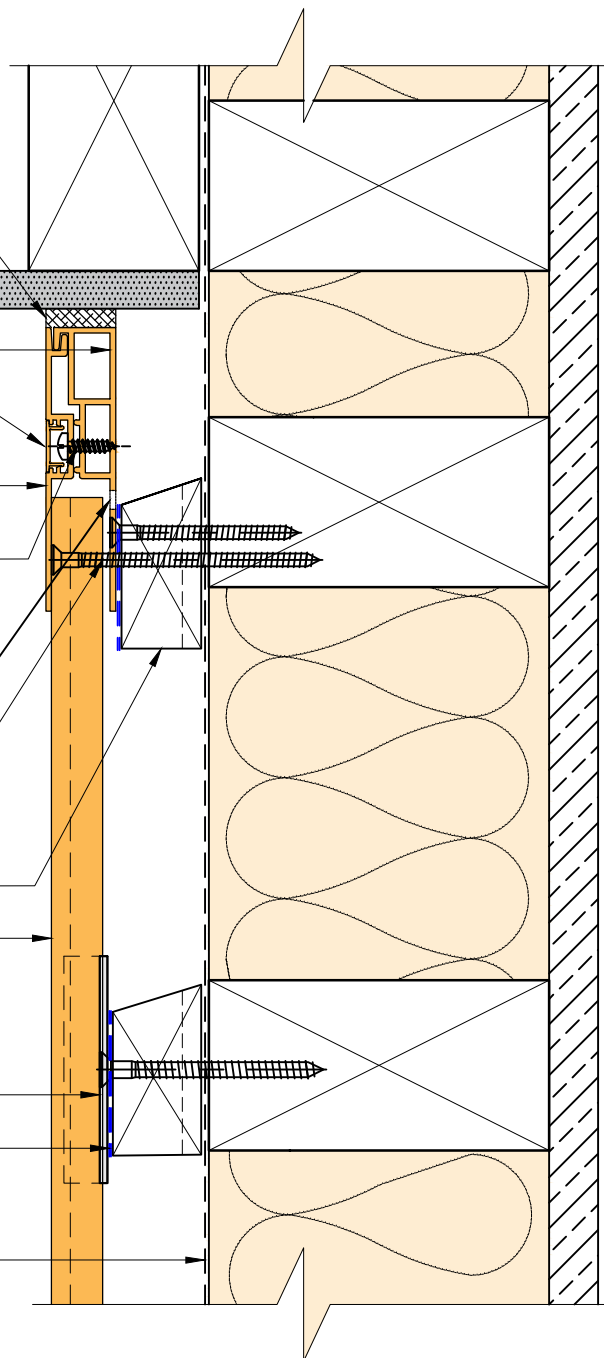
Horizontal battens

Archimax® AM 700 vertical weatherboard fixed with clip brackets @ 800mm max centers with 1-10g x 65mm csk sq s.s. self tapping screws through the cladding battens (1)

Archimax® clip bracket AM 050

Archimax® strip isolator (between aluminium & treated timber battens)


Building underlay

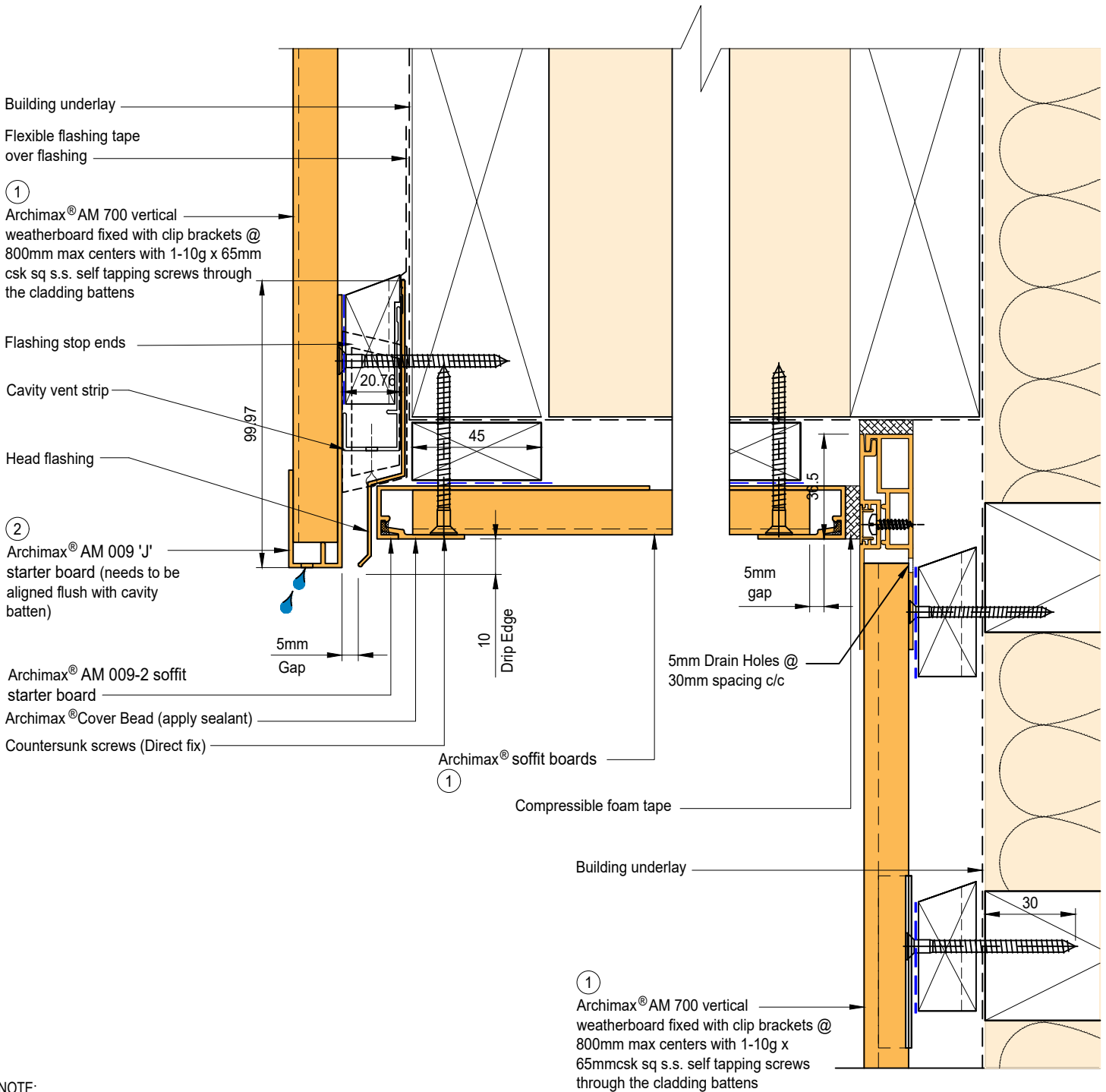


NOTE:

1. Ideally, use 5mm compressible foam tape, or use sealant to seal the gap between soffit and Archimax cladding depending on the site situation.
2. For vertical cladding more than 4 meters, secure 1 screw at the top for every meter of width. If it exceeds 6 meters, fix at both top and middle with one screw each.
3. Timber Cavity Batten at 800mm max spacing.
4. Secure the AM029 clip with 1 screw for standard use, or 2 screws for added support




 <p>ARCHIMAX ALUMINIUM CLADDING SYSTEM <i>Creating more durable building envelopes</i> www.archimax.co.nz</p>	System AM700 - VERTICAL WEATHERBOARD	Detail ARCHIMAX® SOFFIT DETAIL	Drawing No. Rev. AM-SO-V10 E			
	<p>This drawing is the copyright of Archimax Limited. Modification of details for job specification requirements must be approved by Archimax Ltd. The building designer is ultimately responsible to ensure all building work is designed and constructed according to building code requirements, best code of practice industry guidelines. All components must be supplied by Archimax. Archimax reserves the right to alter or upgrade details at any time without prior notice.</p>		<table border="1"> <tr> <td>Scale</td> <td>Date</td> </tr> <tr> <td>1:2</td> <td>NOV24</td> </tr> </table>	Scale	Date	1:2
Scale	Date					
1:2	NOV24					

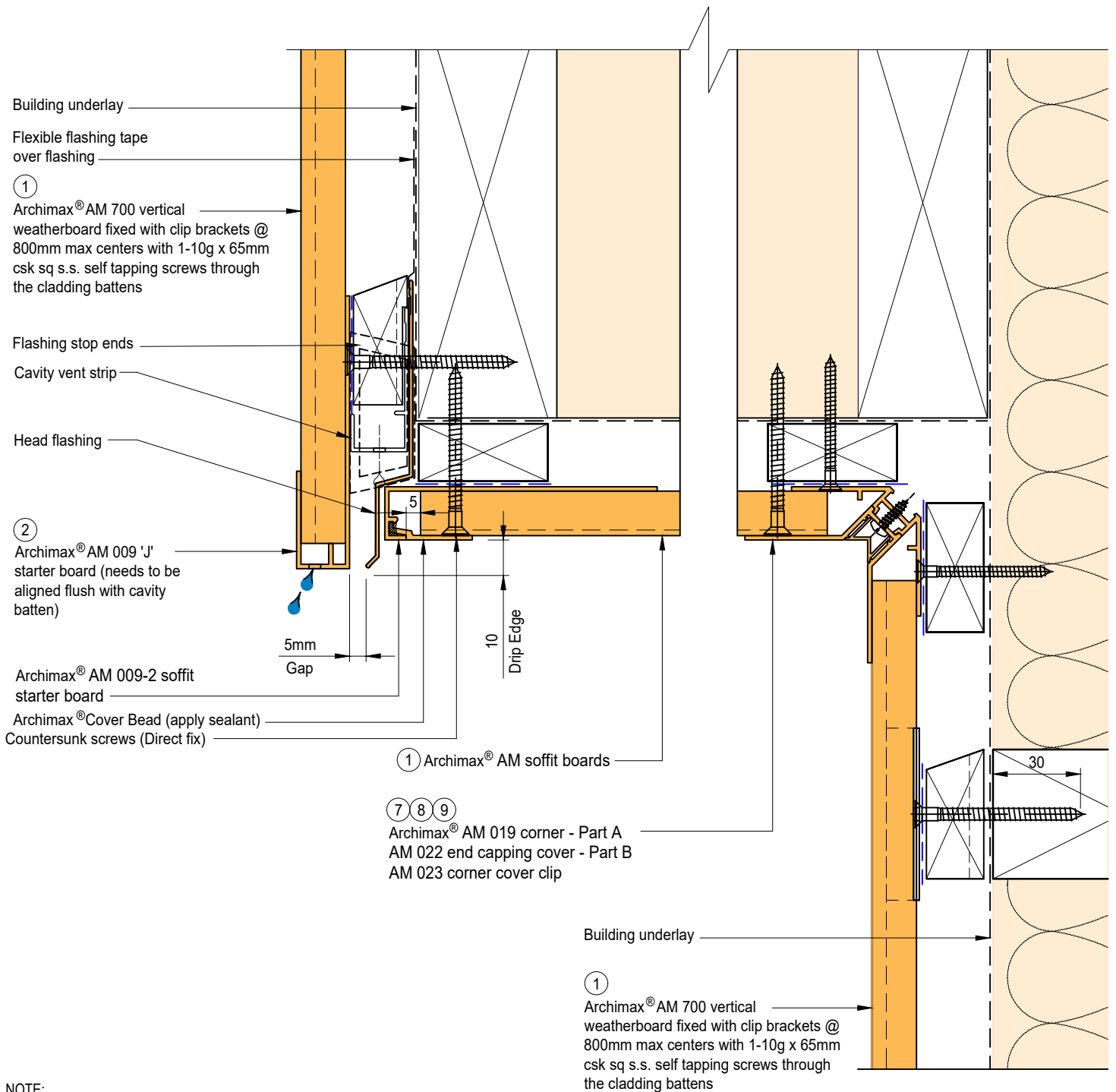


NOTE:

1. Stop ends to be installed at flashing ends.
2. Soffit requires direct fixing without brackets.




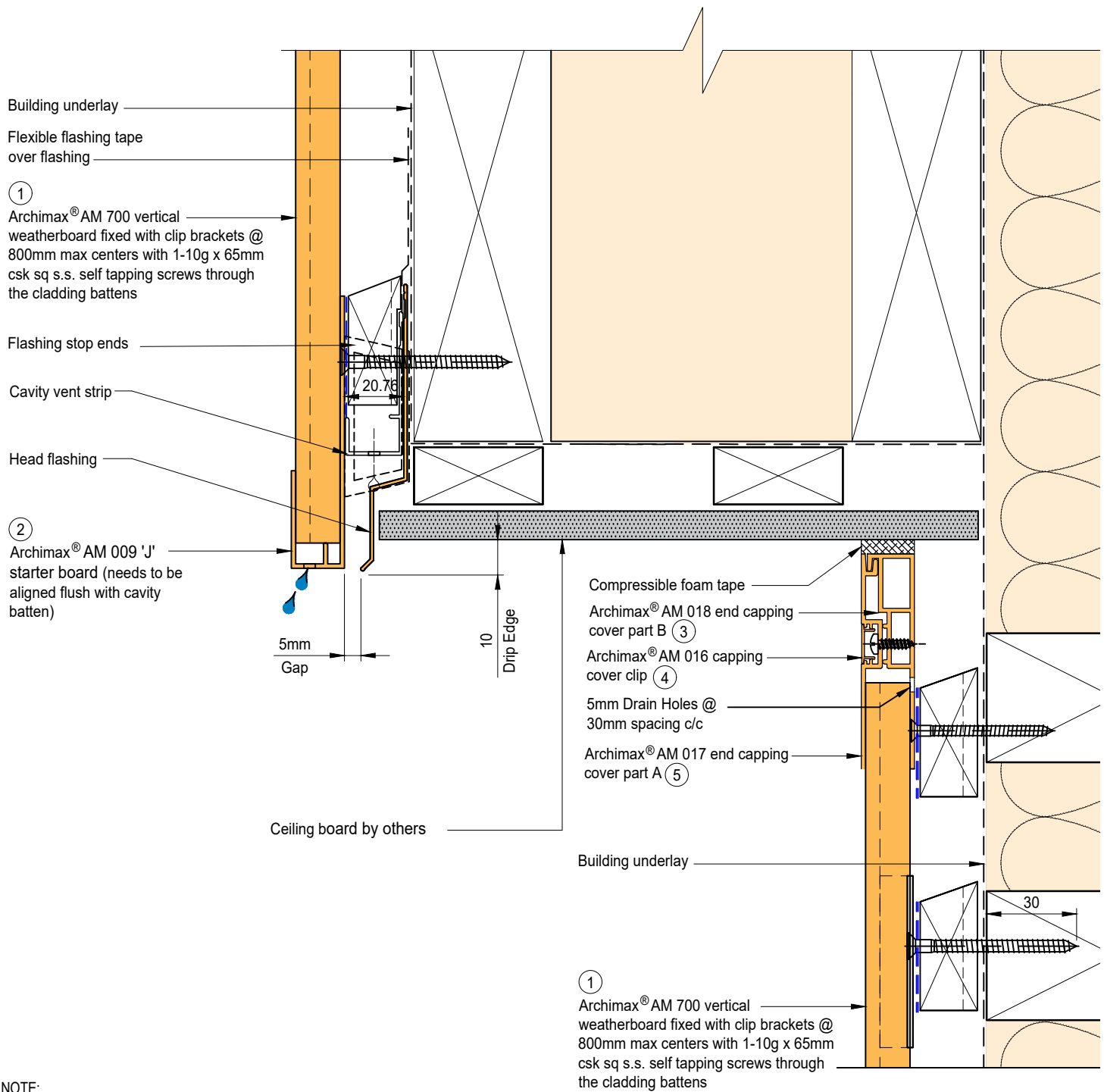
 <p>ARCHIMAX ALUMINIUM CLADDING SYSTEM <i>Creating more durable building envelopes</i> www.archimax.co.nz</p>	System AM700 - VERTICAL WEATHERBOARD	Detail ARCHIMAX® FASCIA, SOFFIT & WALL DETAIL	Drawing No. Rev. AM-SO-V11.1 E			
	<p>This drawing is the copyright of Archimax Limited. Modification of details for job specification requirements must be approved by Archimax Ltd. The building designer is ultimately responsible to ensure all building work is designed and constructed according to building code requirements, best code of practice industry guidelines. All components must be supplied by Archimax. Archimax reserves the right to alter or upgrade details at any time without prior notice.</p>		<table border="1"> <tr> <td>Scale</td> <td>Date</td> </tr> <tr> <td>1:2</td> <td>NOV24</td> </tr> </table>	Scale	Date	1:2
Scale	Date					
1:2	NOV24					



NOTE:
 1. Stop ends to be installed at flashing ends.
 2. Soffit requires direct fixing without brackets.




 <p>ARCHIMAX ALUMINIUM CLADDING SYSTEM <i>Creating more durable building envelopes</i> www.archimax.co.nz</p>	System AM700 - VERTICAL WEATHERBOARD	Detail ARCHIMAX® FACIA, SOFFIT & WALL DETAIL (90° SOFFIT / WALL) DETAIL	Drawing No. Rev. AM-SO-V11.2 E	
	<p>This drawing is the copyright of Archimax Limited. Modification of details for job specification requirements must be approved by Archimax Ltd. The building designer is ultimately responsible to ensure all building work is designed and constructed according to building code requirements, best code of practice industry guidelines. All components must be supplied by Archimax. Archimax reserves the right to alter or upgrade details at any time without prior notice.</p>		Scale 1:2	Date NOV24



NOTE:
STOP ENDS TO BE INSTALLED AT FLASHING ENDS



 <p>ARCHIMAX ALUMINIUM CLADDING SYSTEM <i>Creating more durable building envelopes</i> www.archimax.co.nz</p>	System AM700 - VERTICAL WEATHERBOARD	Detail ARCHIMAX® FASCIA, BOARD SOFFIT & WALL DETAIL	Drawing No. Rev. AM-SO-V11.3 E
	<p>This drawing is the copyright of Archimax Limited. Modification of details for job specification requirements must be approved by Archimax Ltd. The building designer is ultimately responsible to ensure all building work is designed and constructed according to building code requirements, best code of practice industry guidelines. All components must be supplied by Archimax. Archimax reserves the right to alter or upgrade details at any time without prior notice.</p>		<p>Scale Date</p> <p>1:2 NOV24</p>

EXTERIOR

Selected roofing

Flashing & sealed by others

Archimax® AM 018 end capping cover part B (needs to be aligned flush with cavity batten) ③
 Archimax® AM 016 capping cover clip ④

5mm Drain Holes @ 30mm spacing c/c

Archimax® AM 017 end capping cover part A ⑤

Archimax® strip isolator (between aluminium & treated timber battens)

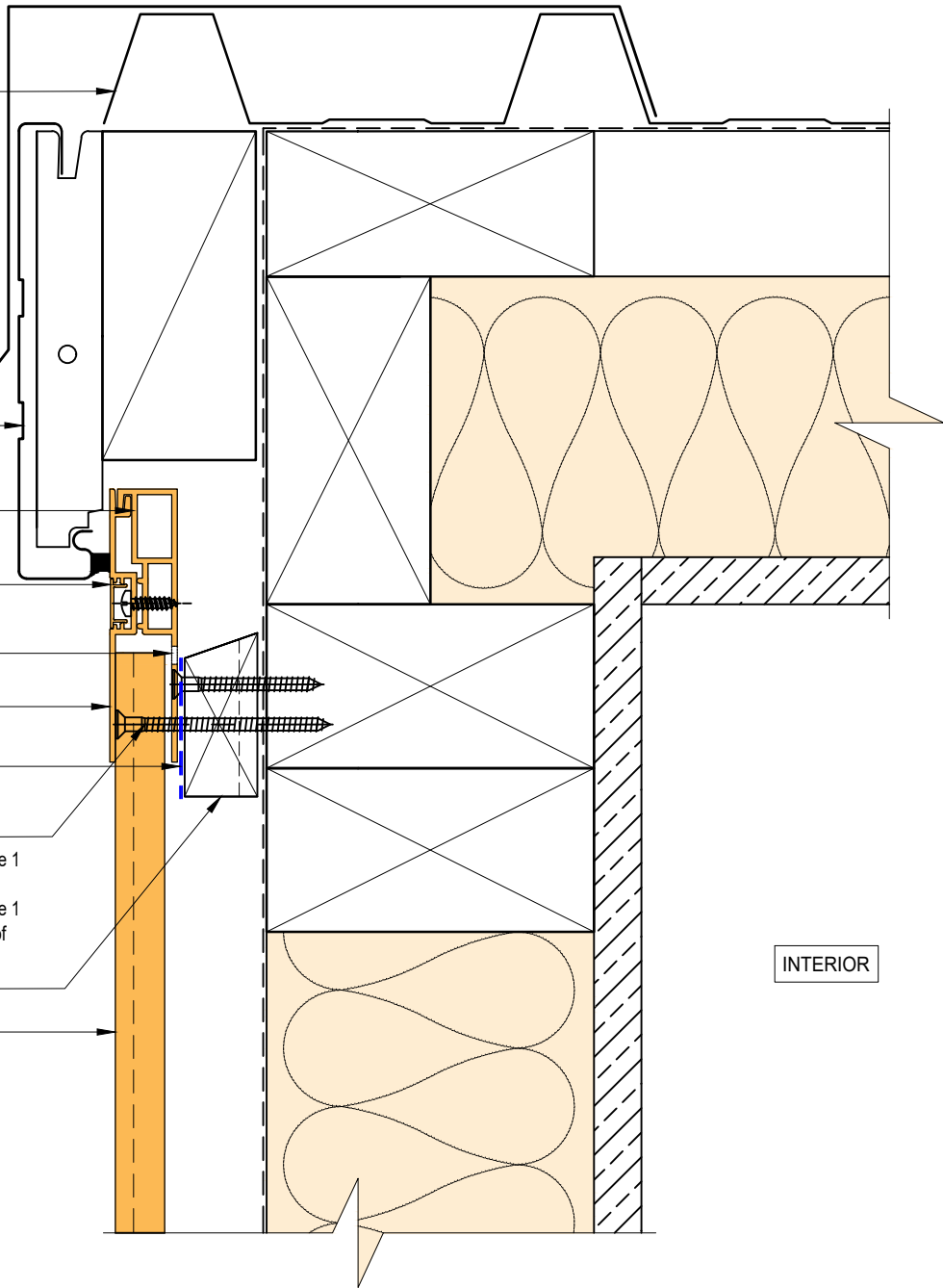
Countersunk screws

- for vertical cladding above 4 meters, secure 1 screw at the top for every meter of width.
- for vertical cladding above 6 meters, secure 1 screw at the top & middle for every meter of width.

Horizontal battens

Archimax® AM 700 vertical weatherboard fixed with clip brackets @ 800mm max centers with 1-10g x 65mm csk sq s.s. self tapping screws through the cladding battens ①

INTERIOR



NOTE:

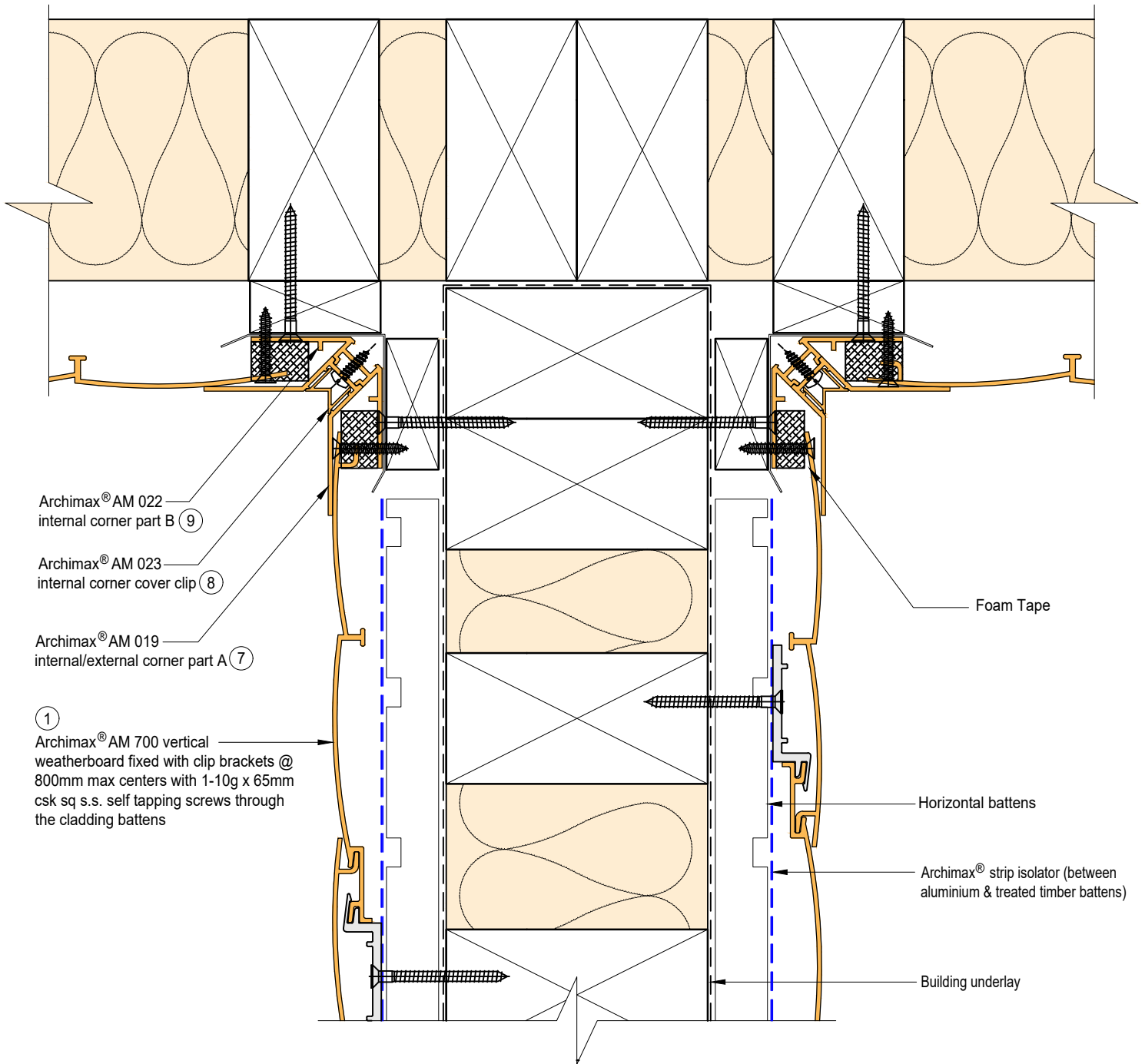
1. For vertical cladding more than 4 meters, secure 1 screw at the top for every meter of width. If it exceeds 6 meters, fix at both top and middle with one screw each.




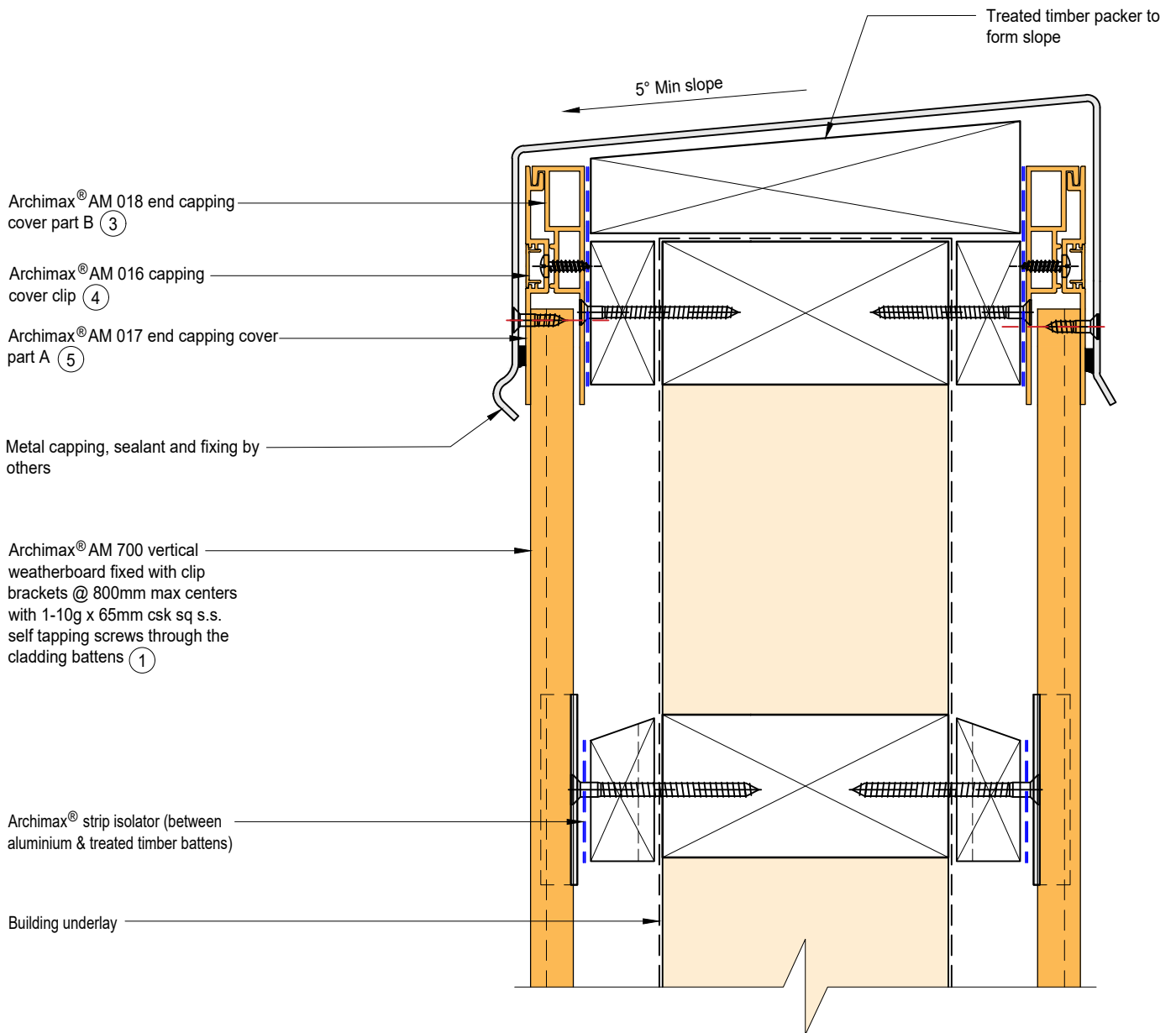
BRANZ Appraised
 Appraisal No. 1173 [2021]

ARCHIMAX
 ALUMINIUM CLADDING SYSTEM
 Creating more durable building envelopes
 www.archimax.co.nz

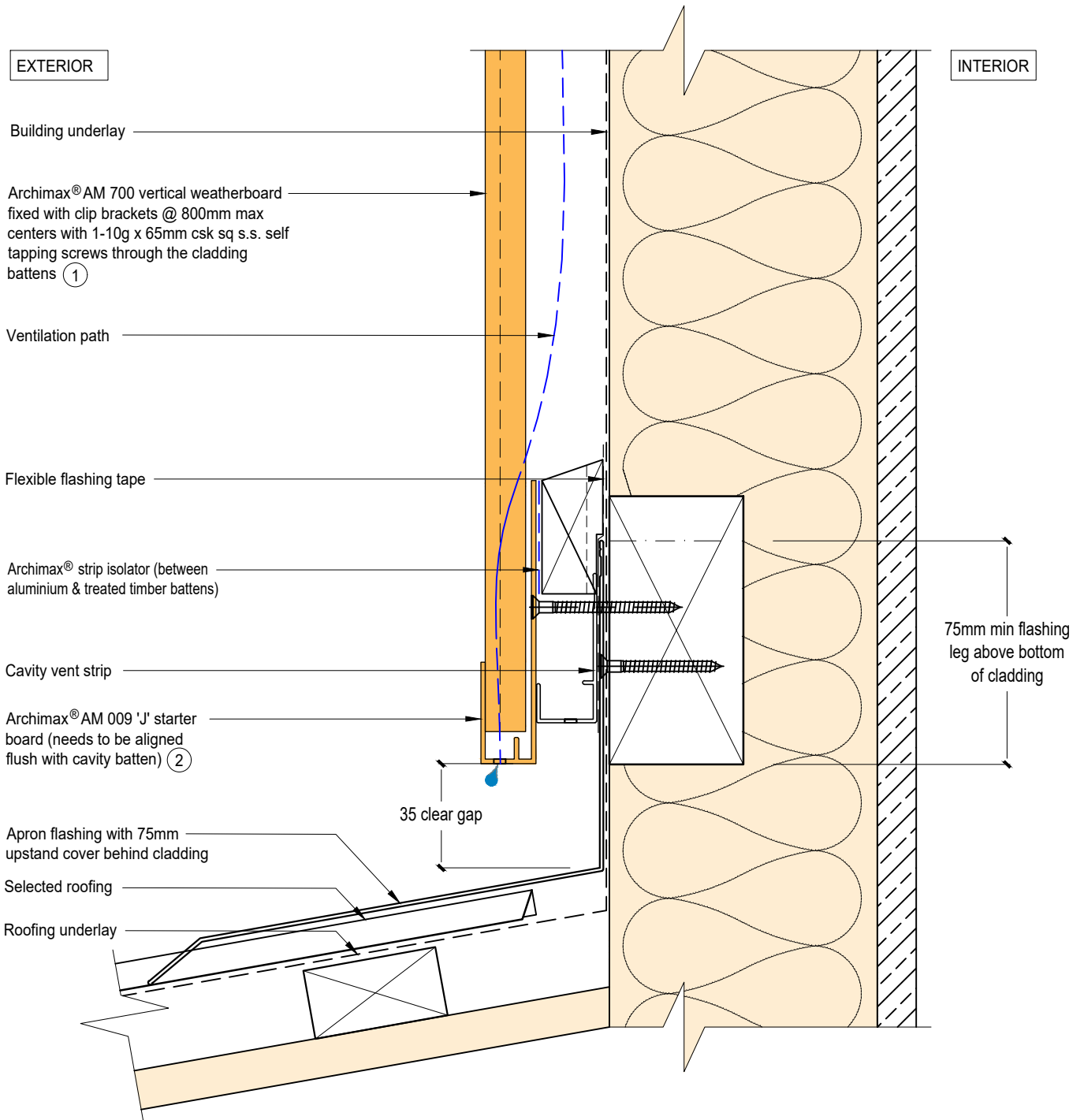
System AM700 - VERTICAL WEATHERBOARD	Detail ARCHIMAX® NON - SOFFIT DETAIL	Drawing No. Rev. AM-NSO-V12 E
This drawing is the copyright of Archimax Limited. Modification of details for job specification requirements must be approved by Archimax Ltd. The building designer is ultimately responsible to ensure all building work is designed and constructed according to building code requirements, best code of practice industry guidelines. All components must be supplied by Archimax. Archimax reserves the right to alter or upgrade details at any time without prior notice.		Scale Date 1:2 NOV24



 ARCHIMAX ALUMINIUM CLADDING SYSTEM <i>Creating more durable building envelopes</i> www.archimax.co.nz	System AM700 - VERTICAL WEATHERBOARD	Detail ARCHIMAX® INTERNAL CORNER JUNCTION DETAIL	Drawing No. Rev. AM-BJ-V13 E
	<small>This drawing is the copyright of Archimax Limited. Modification of details for job specification requirements must be approved by Archimax Ltd. The building designer is ultimately responsible to ensure all building work is designed and constructed according to building code requirements, best code of practice industry guidelines. All components must be supplied by Archimax. Archimax reserves the right to alter or upgrade details at any time without prior notice.</small>		Scale Date 1:2 NOV24

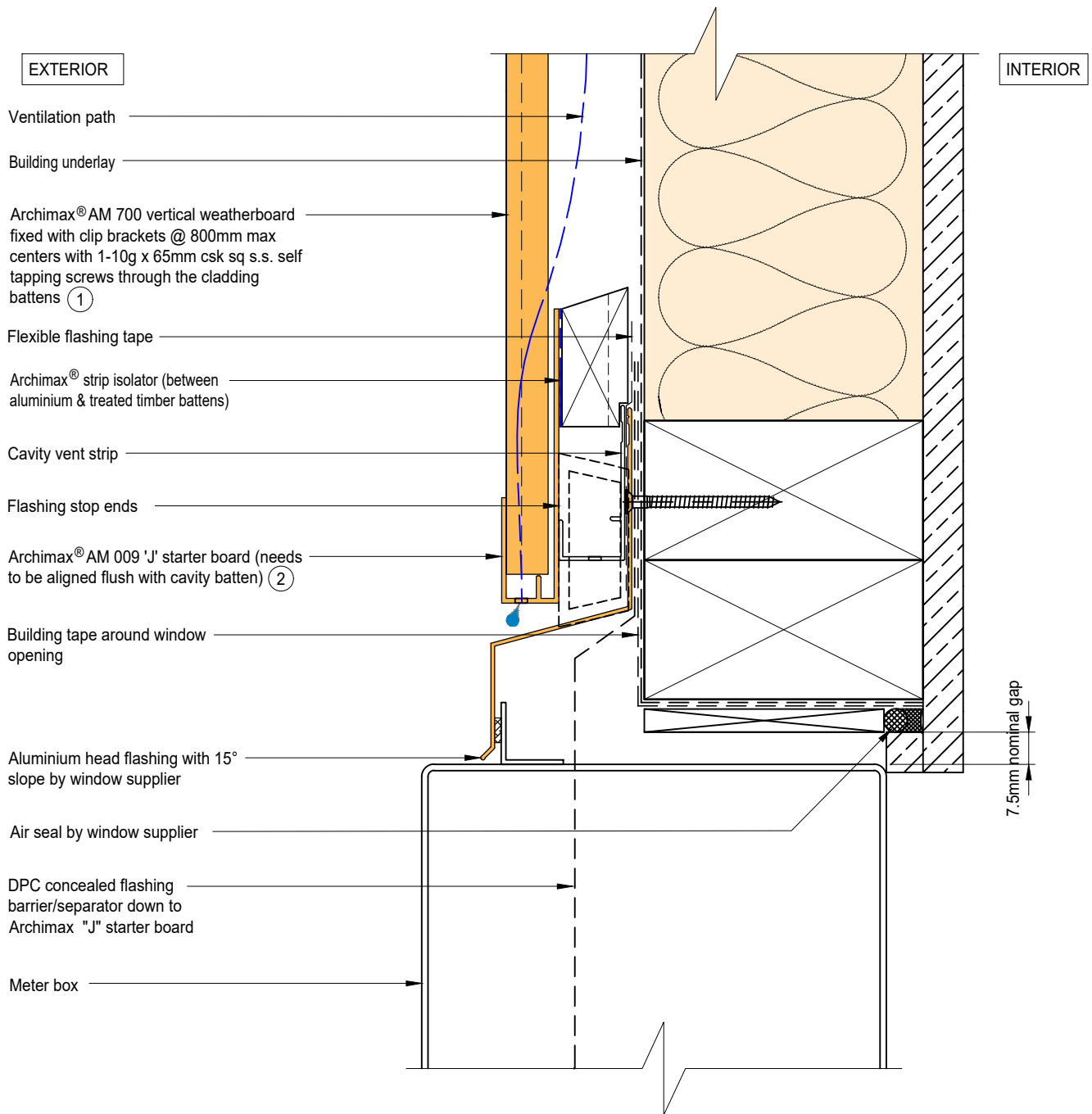


System AM700 - VERTICAL WEATHERBOARD	Detail ARCHIMAX® PARAPET WITH CAVITY DETAIL	Drawing No. Rev. AM-PAR-V14 E
This drawing is the copyright of Archimax Limited. Modification of details for job specification requirements must be approved by Archimax Ltd. The building designer is ultimately responsible to ensure all building work is designed and constructed according to building code requirements, best code of practice industry guidelines. All components must be supplied by Archimax. Archimax reserves the right to alter or upgrade details at any time without prior notice.		Scale Date 1:2 NOV24





ARCHIMAX
 ALUMINIUM CLADDING SYSTEM
Creating more durable building envelopes
 www.archimax.co.nz

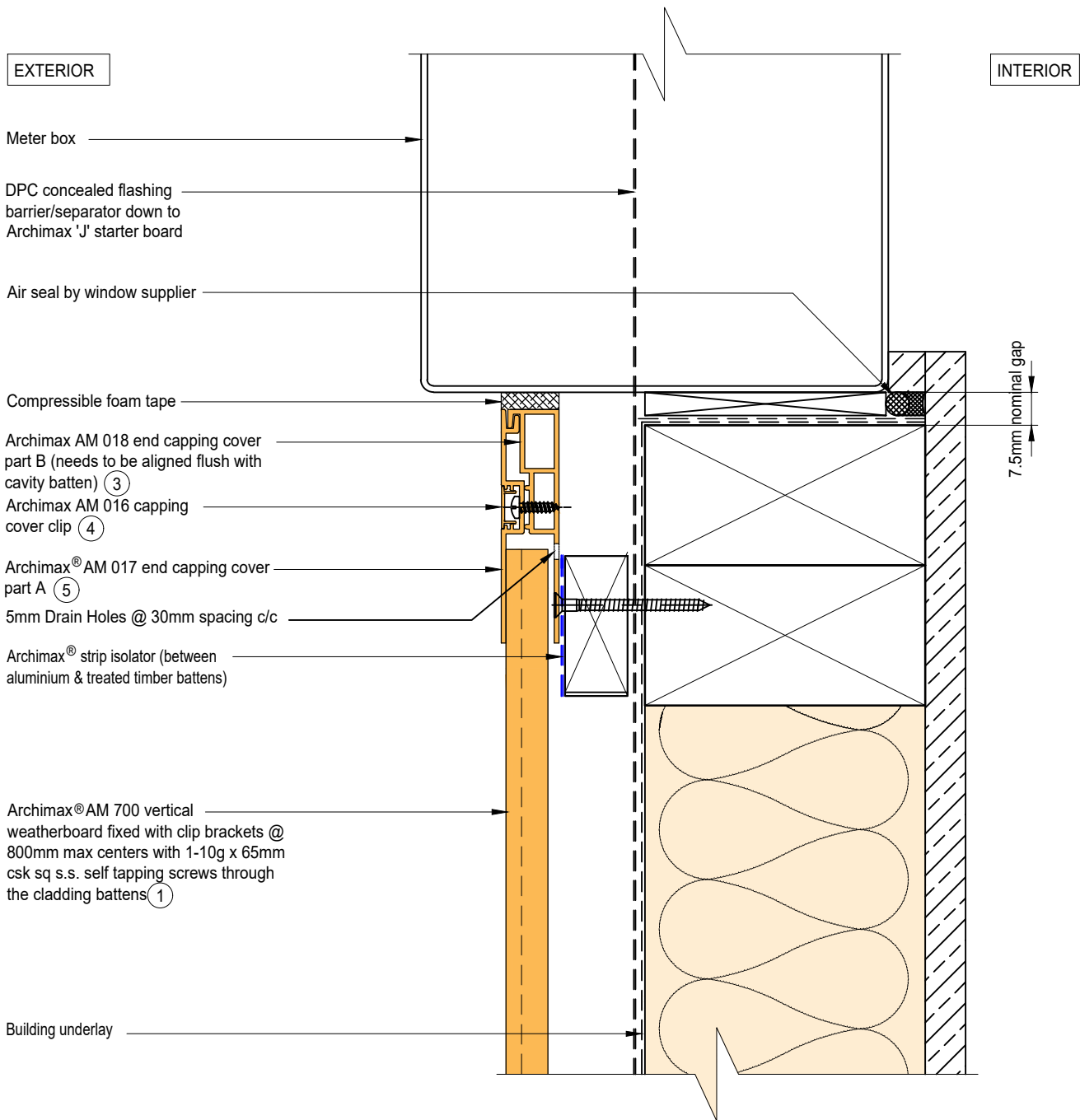
System AM700 - VERTICAL WEATHERBOARD	Detail ARCHIMAX® LOWER ROOF WALL JUNCTION DETAIL	Drawing No. AM-RW-V15	Rev. E
This drawing is the copyright of Archimax Limited. Modification of details for job specification requirements must be approved by Archimax Ltd. The building designer is ultimately responsible to ensure all building work is designed and constructed according to building code requirements, best code of practice industry guidelines. All components must be supplied by Archimax. Archimax reserves the right to alter or upgrade details at any time without prior notice.		Scale 1:2	Date NOV24




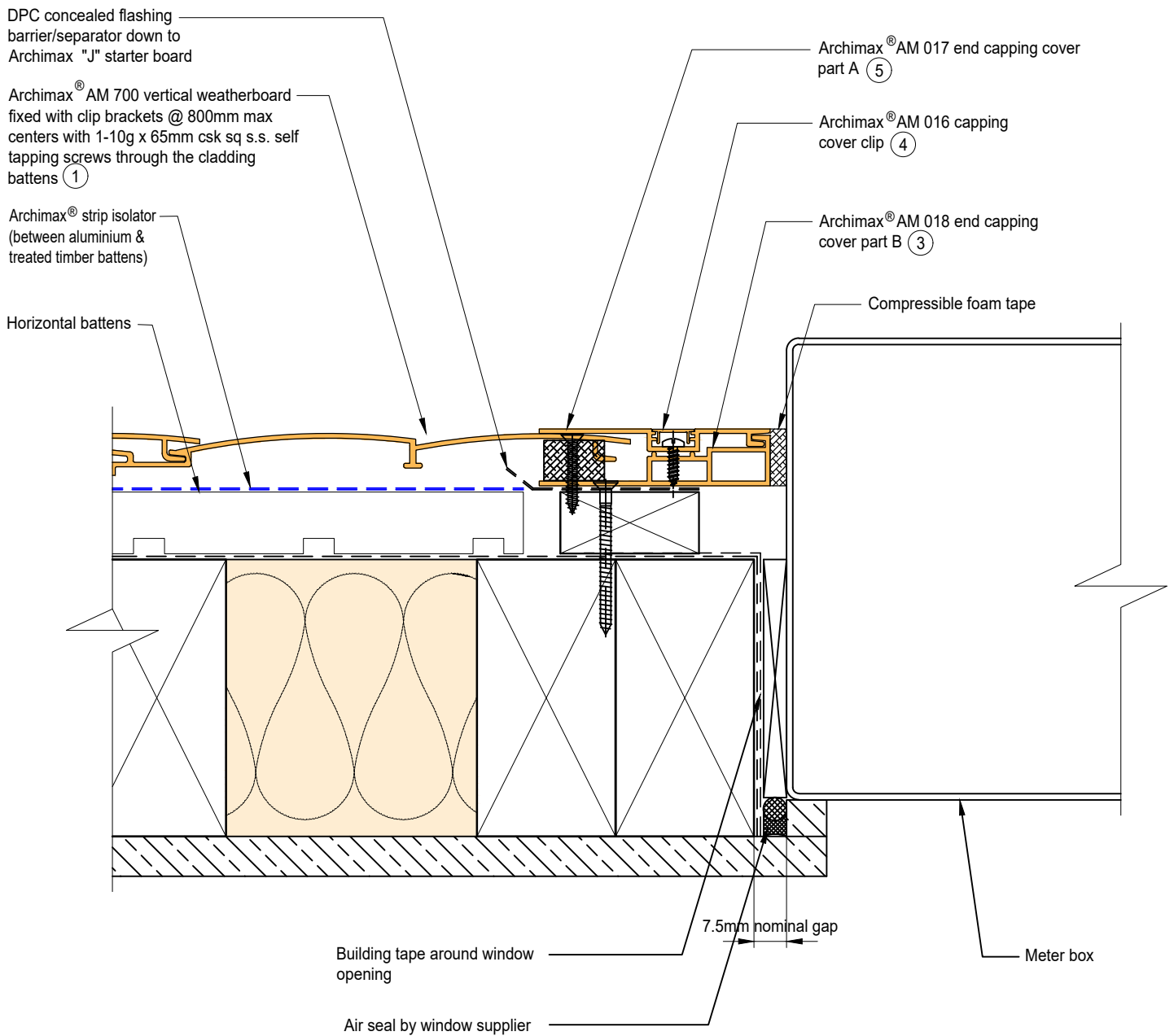
NOTE:
STOP ENDS TO BE INSTALLED AT FLASHING ENDS




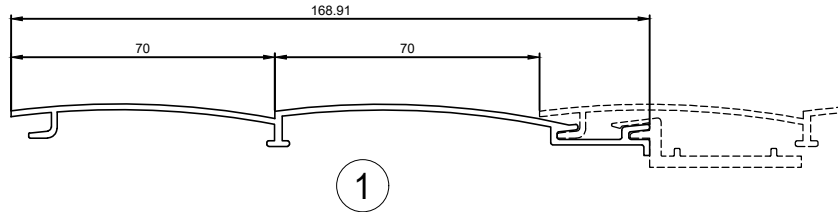
 <p>ARCHIMAX ALUMINIUM CLADDING SYSTEM <i>Creating more durable building envelopes</i> www.archimax.co.nz</p>	<p>System AM700 - VERTICAL WEATHERBOARD</p>	<p>Detail ARCHIMAX® METER BOX HEAD DETAIL</p>	<p>Drawing No. Rev. AM-MB-V16 E</p>
	<p>This drawing is the copyright of Archimax Limited. Modification of details for job specification requirements must be approved by Archimax Ltd. The building designer is ultimately responsible to ensure all building work is designed and constructed according to building code requirements, best code of practice industry guidelines. All components must be supplied by Archimax. Archimax reserves the right to alter or upgrade details at any time without prior notice.</p>		<p>Scale Date 1:2 NOV24</p>



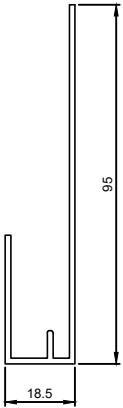
 <p>ARCHIMAX ALUMINIUM CLADDING SYSTEM <i>Creating more durable building envelopes</i> www.archimax.co.nz</p>	System AM700 - VERTICAL WEATHERBOARD	Detail ARCHIMAX® METER BOX SILL DETAIL	Drawing No. Rev. AM-MB-V17 E			
	<p>This drawing is the copyright of Archimax Limited. Modification of details for job specification requirements must be approved by Archimax Ltd. The building designer is ultimately responsible to ensure all building work is designed and constructed according to building code requirements, best code of practice industry guidelines. All components must be supplied by Archimax. Archimax reserves the right to alter or upgrade details at any time without prior notice.</p>		<table border="1"> <tr> <td>Scale</td> <td>Date</td> </tr> <tr> <td>1:2</td> <td>NOV24</td> </tr> </table>	Scale	Date	1:2
Scale	Date					
1:2	NOV24					



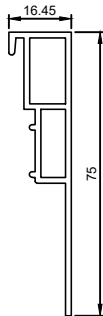
 <p>ARCHIMAX ALUMINIUM CLADDING SYSTEM <i>Creating more durable building envelopes</i> www.archimax.co.nz</p>	<p>System AM700 - VERTICAL WEATHERBOARD</p>	<p>Detail ARCHIMAX® METER BOX JAMB DETAIL</p>	<p>Drawing No. Rev. AM-MB-V18 E</p>			
	<p>This drawing is the copyright of Archimax Limited. Modification of details for job specification requirements must be approved by Archimax Ltd. The building designer is ultimately responsible to ensure all building work is designed and constructed according to building code requirements, best code of practice industry guidelines. All components must be supplied by Archimax. Archimax reserves the right to alter or upgrade details at any time without prior notice.</p>		<table border="1"> <tr> <td>Scale</td> <td>Date</td> </tr> <tr> <td>1:2</td> <td>NOV24</td> </tr> </table>	Scale	Date	1:2
Scale	Date					
1:2	NOV24					



AM 700 Archimax Horizontal/Vertical Weatherboard



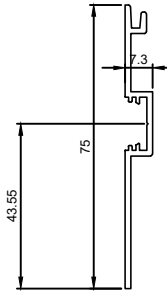
2



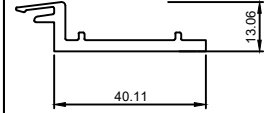
3



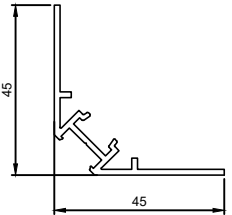
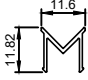
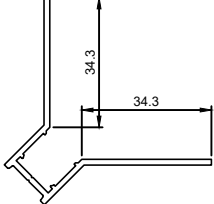
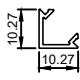
4



5



6

AM 009	AM 018	AM 016	AM 017	AM 050
"J" Starter Board	End capping part B	Jointer / Jamb / Sill capping cover clip	End Capping part A	Clip Bracket
				
AM 019	AM 023	AM 022	AM 020	
Internal/External corner part A	Internal Corner cover clip	Internal Corner part B	External Corner cover clip	