

# QUARIZZ® Tabletops & Metal Bases



PRODUCT CATALOG

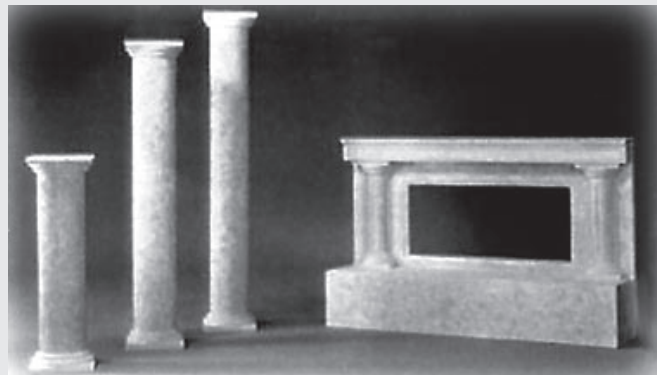
From the World's Leading Manufacturer of The Original Fauxstone Tabletops and other fine furnishings

*The Original Fauxstone*

# QUARIZZ® Faux almost any application!

Let us introduce you to the rest of the innovative world of QUARIZZ.® From tabletops, to furniture, to vanity tops, to wall surfaces, relief art, fireplaces, statues, frames, signage and much more, QUARIZZ® stone surface applications are almost limitless. At The Original Fauxstone we continue to expand the applications of this unique product to fit your design and decorating needs.

Let QUARIZZ® be your answer!



## *The Original Fauxstone*

SAN MARCOS, CA 92078

Contact us for your project needs.

Phone: 760.703.0833

Email: [danc@ramsglen.com](mailto:danc@ramsglen.com)

Visit our website and discover a versatile line of our fine products.

[www.quarizz.com](http://www.quarizz.com)



# QUARIZZ® Tabletops & Metal Bases

## PRODUCT CATALOG

### Table of Contents

QUARIZZ® Perfect for any decor .....	Page 2
About QUARIZZ® .....	Page 3
Surface Specifications	
Cross-section	
Surface Textures	
Stone Color Categories	
Tabletop Shapes .....	Page 4
Tabletop Edges .....	Page 5
Special Use Tables and Surfaces .....	Page 6
Conference Tables	
Bars & Counters	
Inlays	
Tabletop Bases .....	Page 7
Custom Iron Finishes	
Designer Bases & Specifications .....	Page 8
Tabletop Bases & Specifications .....	Page 10
The Original Fauxstone Service & Response .....	Page 13
General Information, Terms & Conditions .....	Page 14
Limited Warranty .....	Page 15
More Tabletop and Base Information .....	Page 16
Mounting Plate	
QUARIZZ® Surface Cleaning Instructions	
Monument Signage .....	Inside Back Cover
Partial Client List .....	Inside Back Cover
QUARIZZ® Faux Almost Any Application .....	Back Cover

### THE ORIGINAL FAUXSTONE "FAUX" VERSATILITY FORMULA

The Original Fauxstone offers you unparalleled versatility of design through the unique products they manufacture. A table is no longer "just a table."  
It is a reflection of your distinctive style of design. It is an essential part of the ambiance you wish to create. With a vast array of choices and the assistance of our artisans and staff, you can easily create the table that will best fit and complement your design.

QUARIZZ® Surface Texture + Color + Table Shape +  
Edge Detail + Custom Finished Table Base =

The Perfect Table For Your Decor

## QUARIZZ® - PERFECT FOR ANY DECOR

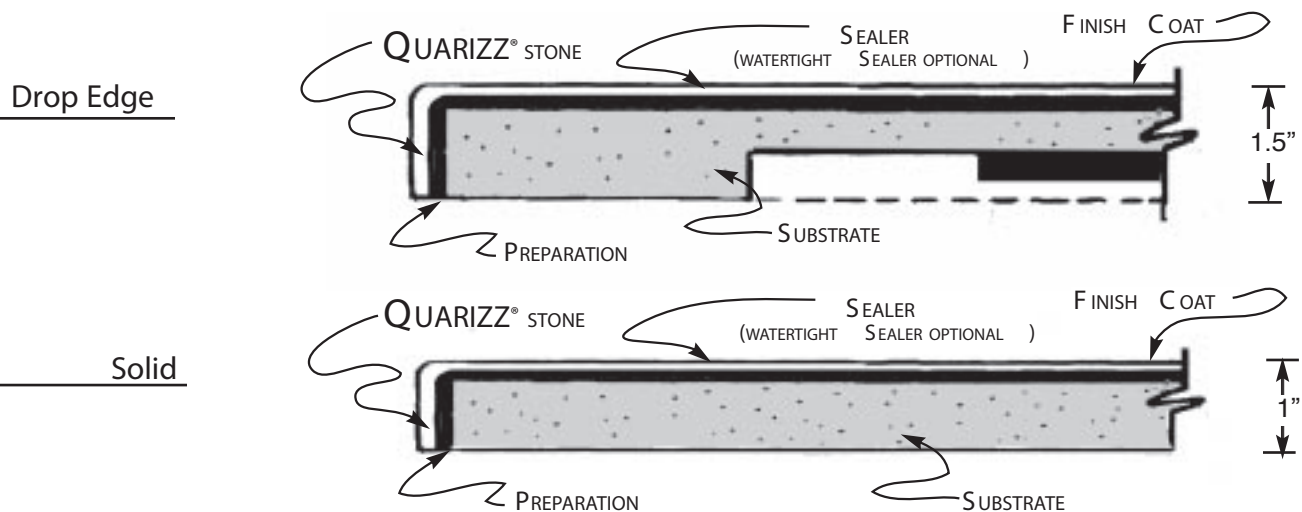
Versatile and elegant, QUARIZZ® surfaces offer you an almost unlimited palette of shapes, textures, and colors to coordinate with and complement your design. Be it indoors or outdoors, an elegant dining establishment, an ethnic ambience, or a fast food restaurant, you can be assured that QUARIZZ® Tabletops will add that extra finishing touch to your decor.



**QUARIZZ®** Stone Tabletops are manufactured from a hard surface stone product that meets the highest standards and are competitively priced. Used for both commercial and residential applications, **QUARIZZ®** was engineered and tested to withstand the wear and tear of the most demanding of environments including high volume restaurants, major theme parks, hotels and casinos. **QUARIZZ®** has several advantages over comparable Tabletop products.

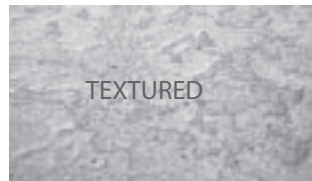
- Light weight
- Resists bacterial growth
- Odorless
- Easily repaired and maintained
- Water and stain resistant
- Heat resistant up to 180 degrees
- No toxic chemicals/ formaldehyde free
- Natural Appearance
- Flexible and shock absorbent
- Ultraviolet resistant
- Impact and chip resistant

**QUARIZZ®** is bonded to high density high grade wood product to insure strength and versatility. Our skilled artisans use a perfected proprietary process to bond the **QUARIZZ®** Stone with sealers to the substrate.



## Surface Textures *samples available upon request*

**QUARIZZ®** Tabletops are available in two standard surfaces for indoor or outdoor use. Surfaces for outdoor and wet environment usage have a multi-coated application of an industrial strength watertight sealer. Custom surface textures are also available to meet your design needs.



## Colors *samples available upon request*

**QUARIZZ®** Stone color categories:

- Riverstone: A selection of neutral monochromatic colors
- Omega: An array of decorator colors and deep tones
- Premium: A selection of detail distinctive colors
- Custom: Custom colors to match your specifications

Whatever shape! Whatever size!

The Original Fauxstone offers you a choice of Standard **QUARIZZ**® Tabletop shapes and sizes. And, since no molds are required and all tabletops are individually handcrafted, we custom manufacture shapes and sizes that best accommodate your decor and floor space requirements.

## Custom Shapes

Custom to fit



... for hard to fit spaces.

Custom Example



... for easier seat access

Custom Contour



... that special shape for your distinctive decor

## Standard Shapes



Round



Square



Corner



Rectangle



Oval Boat



V-Boat



Oval



Bullet



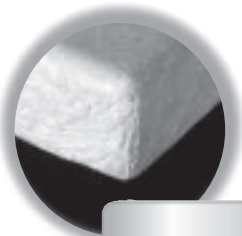
Racetrack

"... since no molds are required ... The Original Fauxstone manufactures the shapes and sizes that best accommodate your decor and floor space requirements."

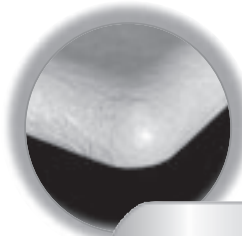
For that final tabletop detail . . .

**QUARIZZ®** surface versatility allows for an unlimited number of table edge design solutions to accent your decor. Add yet another distinctive dimension to your decorating options. Choose from a selection of simple Standard Edges or elegantly detailed Premium Edges. If you prefer to implement your own custom edge design statement, The Original Fauxstone artisans work with you to create the desired effect you want to achieve.

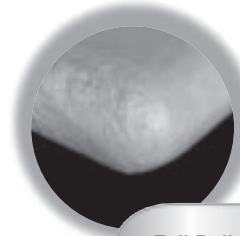
## Standard Edges



*Flat*

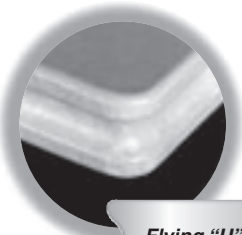


*Half Bullnose*

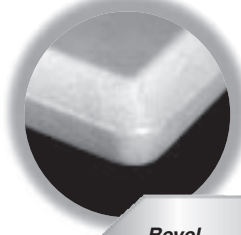


*Full Bullnose*

## Premium Edges



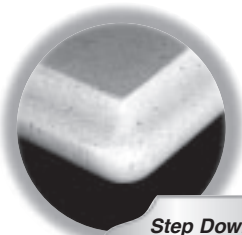
*Flying "U"*



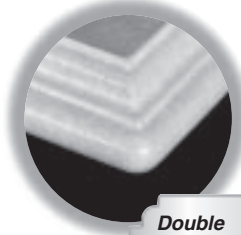
*Bevel*



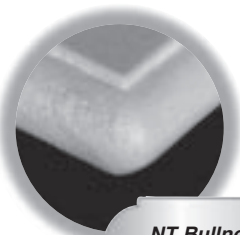
*Broken*



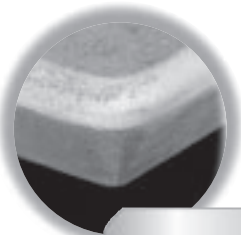
*Step Down  
Bullnose*



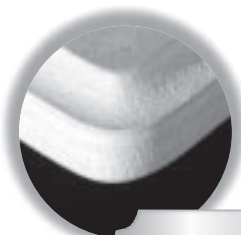
*Double  
Stepdown*



*NT Bullnose*



*Reverse Bevel*



*Flat Ogee*

" . . . The Original Fauxstone designers work with you to select or create edge details that will accent the unique style of your design."

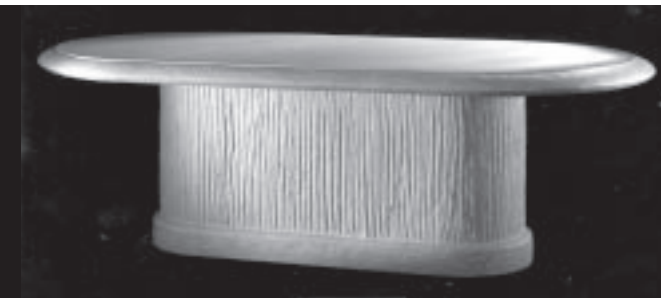


## SPECIAL USE TABLES AND SURFACES

The versatility, durability and style of **QUARIZZ**® makes it a surface that is an excellent choice for special use tables and surfaces.

### Conference Tables . . .

**QUARIZZ**® surface conference tables can make a bold statement of durable elegance in the board room and meeting areas. Whatever the design, whatever the style, The Original Fauxstone will handcraft the conference table that best suits you and the character of your company.



### Bars & Counters . . .

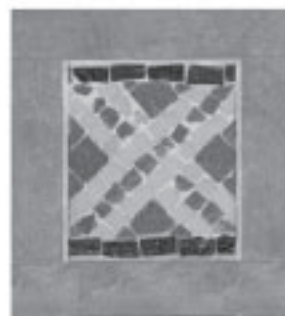
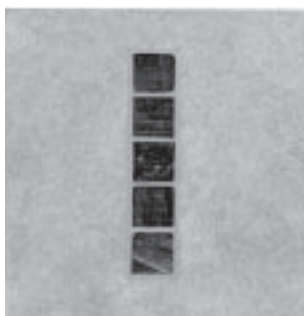
**QUARIZZ**® surface durability is proven in environments like bars, food counters, or reception areas where it withstands everyday use abuse. Water, stain, and heat resistant, it is undisputably the surface to choose for your next application.



**QUARIZZ**® durability . . . withstands everyday use abuse.

### Inlays . . .

Tabletop inlays, yet another detail option offered to you by The Original Fauxstone, reinforce the versatility, yet don't compromise the durability of **QUARIZZ**® Tabletops. Choose tile, glass or a variety of other materials or laminates to inlay a logo, a creative design, or game board in your **QUARIZZ**® table surface.



### Contract/Hospitality Furnishings . . .

The Original Fauxstone also offers **QUARIZZ**® stone surface versatility, durability, and style in their line of furnishings for hotels, restaurants, and clubs. Please contact us for a Contract Catalog or visit our web site at [www.quarizz.com](http://www.quarizz.com)



# Tabletop Bases

You can rely on the stability, durability, and sturdiness of metal table bases from The Original Fauxstone. Coordinate tabletops with bases from our select variety of finishes and colors. With a wide variety of models to choose from, you are assured to find the ideal mate to support your tabletop and complement your style of decor.

- Stable
- Durable
- Sturdy

## Interior Finish

Powder Coat - Black Wrinkle is standard.  
The Original Fauxstone can provide colors from numerous powder coat manufacturers or provide custom colors to harmonize with your sample swatch.

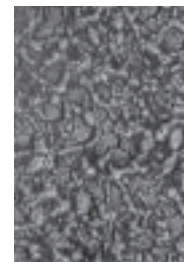
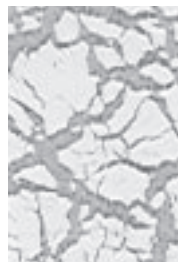
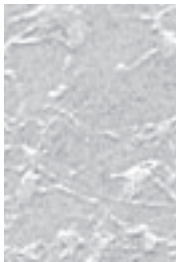
Polish Chrome - available in the AS, B, C, D, E, F, I and T Series.

## Exterior Finish

Hammerite exterior finishes offer the same designer satin and antique finishes with the added durability that withstands outdoor conditions.

## THE ORIGINAL FAUXSTONE Designer Iron Finishes

Choose from a wide array of exquisite iron finishes to complement the elegance of **QUARIZZ**® stone surfaces and add that finishing touch to your table selection. Personalize your decor style by adding yet another design dimension offered to you by The Original Fauxstone.



A random sampling of the many textures available for your selection from The Original Fauxstone. Color chart and sample chips are available on request.

“Choose just the right custom iron finish to complement your **QUARIZZ**® stone surface tabletop selection . . .”

## Tabletop Base Series Selection

Make your base selection from the various Base Series included in this catalog. Each series has its own distinctive details and features. For table stability, it is recommended that table bases are selected and installed per our specifications, otherwise, wobbling and tilting may occur.

Unique table base designs from The Original Fauxstone, are a perfect accent to your decor. Select from the five designer styles below, or work with our designers to develop a design of your own. Bases are available in a standard powder coat, or in our wide array of The Original Fauxstone designer custom iron finishes.

(color samples are available upon request)

Need a custom color and/or texture?  
You can rely on The Original Fauxstone artisans to work with you to satisfy your specification needs.



Cosmos

Specifications	Model No.	Tabletop Sizes	Spread	Mounting plate ring	Approx. Weight
Base Height: 28"	COS30	30" round/square	12" top & bottom	12" round	20
	COS36	36" round/square	17" top & bottom	17" round	22
	COS42	42" round/square	23" top & bottom	23" round	26
	COS48	48" round/square	29" top & bottom	29" round	28



Galaxy

Specifications	Model No.	Tabletop Sizes	Spread	Mounting plate ring	Approx. Weight
Base Height: 28"	GAL30	30" round/square	12" top & bottom	12" round	20
	GAL36	36" round/square	17" top & bottom	17" round	22
	GAL42	42" round/square	23" top & bottom	23" round	26
	GAL48	48" round/square	29" top & bottom	29" round	28



Orion

Specifications	Model No.	Tabletop Sizes	Spread	Mounting plate ring	Approx. Weight
Base Height: 28"	ORI30	30" round/square	12" top & bottom	12" round	20
	ORI36	36" round/square	17" top & bottom	17" round	22
	ORI42	42" round/square	23" top & bottom	23" round	26
	ORI48	48" round/square	29" top & bottom	29" round	28



Nebula

Specifications	Model No.	Tabletop Sizes	Spread	Mounting plate ring	Approx. Weight
Base Height: 28"	NEB30	30" round/square	12" top & bottom	12" round	20
	NEB36	36" round/square	17" top & bottom	17" round	22
	NEB42	42" round/square	23" top & bottom	23" round	26
	NEB48	48" round/square	29" top & bottom	29" round	28



Saturn

Specifications	Model No.	Tabletop Sizes	Spread	Mounting plate ring	Approx. Weight
Base Height: 28"	SAT30	30" round/square	12" top & bottom	12" round	20
	SAT36	36" round/square	17" top & bottom	17" round	22
	SAT42	42" round/square	23" top & bottom	23" round	26
	SAT48	48" round/square	29" top & bottom	29" round	28

## TABLETOP BASE & SPECIFICATIONS

Select from the following collection of standard table bases to complete your table design. For your convenience, detailed specifications are provided so that you can choose the base that will give ample support and stability for your tabletop.

Also, please consider an application of our wonderful array of custom iron finishes to add to the subtle detailing that accents your creative style and enhances yet another distinguishing dimension to the ambiance. It's this attention to detail and innovative style, that sets your establishment apart from the rest of your industry. The Original Fauxstone gives you the tools to be the best that you can be.

### AS Series-Steel



AS



AS26T



AS36TT



AS36X5

Specifications	Model #	Spread	Tabletop Sizes	Approx. Weight
Height Spider 27 3/4"	AS20T(2)	20" end base	24" x 30" to 72"	11 lbs
10" Cast Iron: AS20T, AS22, AS26, AS26T, AS36TT, AS36X5	AS22	22" x 22"	24-30" sq./rd., 24" x 30"	14 lbs
15" Cast Iron: AS32, AS36 (accepts 8@ #8-#12 screws)	AS26	26" x 26"	36"sq./rd., 30" x 36"	15 lbs
14 ga. steel	AS26T(2)	26" end base	30" x 48" to 96"	12 lbs
2" dia: AS20T, AS22, AS26, AS26T, AS36TT, AS36X5 (outer columns)	AS32	32" x 32"	42" sq./rd.	18 lbs
3" dia: AS32, AS36, AS36X5 (center column)	AS36	36" X 36"	48" sq./rd.	22 lbs
Bolt Base 7/16" x 26 3/4"x	AS36TT	36" End Base(2 col)		18 lbs
Plate 2" dia. 14 ga. steel	AS36X5	36" x 36" (5 col)	60" rd	42 lbs
Glides X Bases-4, End Bases-2 (nylon)				

### B Series



Specifications	Model #	Spread	Tabletop Sizes	Approx. Weight
Height Spider 27 3/4"	B22T (2)	22" end base	24" x 60" to 72"	13 lbs
13" x 13" Cast Iron: B22, B22T, B30, B2230			30" x 48" to 72"	
15" x 15" Cast Iron: B36 (accept 8@ #8-#12 screws)	B22	22" x 22"	36" x 48", 60" rd.(3)	
Column 18 ga. steel			24-30" sq., 30-36" rd., 24" x 30", 30" x 96"(2)	17 lbs
All 3" diameter	B2230	22" x 30"	24" x 36" to 48"	18 lbs
Bolt Base 7/16" x 26 3/4"x			36" x 60" to 96" (2)	
Plate cast iron	B30	30" x 30"	36" sq., 42" rd.	20 lbs
Glides plastic foot 1/2" 1/4 - #20	B36	36 x 36"	42" sq., 48" sq./rd.	30 lbs
X Bases - 4 glides (nylon)				
End Bases — 2 glides (nylon)				

### C Series



Specifications	Model #	Spread	Tabletop Sizes	Approx. Weight
Height Spider 27 3/4"	C17	17" diameter	24-30" sq., 30=36" rd., 24" x 30"	26 lbs
13" x 13" Cast Iron: C17, C22			24" x 60"(2) 60" rd.(3)	
15" x 15" Cast Iron: C28 (accepts 8@ #8-#12 screws)	C22	22" diameter	24-30" sq., 30-36" rd., 42" rd., 30" x 36"	37 lbs
Column 18 ga. steel			30" x 60-96" (2), 36" x 60-96" (2)	
All 3" diameter				
Bolt Base 7/16" x 26 3/4"x	C28	28" diameter	42-48" sq., 48-60" rd., 36" x 48"	56 lbs
Plate cast iron				
Glides steel foot 1/2" 1/4 - #20				
All - 5 glides (nylon)				

## D Series



Specifications	Model #	Spread	Tabletop Sizes	Approx. Weight
Height Spider 27 3/4" 13" x 13" Cast Iron: D17, D 2 15" x 15" Cast Iron: D28 (accepts 8@ #8-#12 screws)	D17	17" diam.	24-30"sq., 30-36"rd. 24" x 30" 24" x 60-72" (2 col)	24 lbs
Column 18 ga. steel All 3" diameter	D22	22" diam.	36" sq., 42" rd. 24" x 36-48" 30" x 36-48" 30" x 60-96" (2 col) 36" x 60-96" (2 col)	40 lbs
Bolt Base 7/16" x 26 3/4" Base Plate cast iron Glides steel foot 1/2" 1/4 - #20 All - 5 glides (nylon)	D28	28" diam.	42-48" sq., 48-60" rd.	82 lbs

## E Series



Specifications	Model #	Spread	Tabletop Sizes	Approx. Weight
Height Spider 27 3/4" 13" x 13" Cast Iron: E20, E24 15" x 15" Cast Iron: E30 (accepts 8@ #8-#12 screws)	E20	20" diam.	24-30"sq., 30"rd. 24" x 30" 24" x 60-72" (2 col) 30" x 60-96" (2 col)	28 lbs
Column 18 ga. steel 3" diameter: E20, E24 4" diameter: E30	E24	24" diam.	36" sq./rd., 42" sq. 24" x 36-48" 30" x 36-48" 36" x 60-96" (2 col)	38 lbs
Bolt Base 7/16" x 26 3/4" Base Plate cast iron Glides steel foot 1/2" 1/4 - #20 All - 5 glides (nylon)	E30	30" diam.	48" sq., 42-48" sq. 36 x 48" (2 col)	59 lbs

## F Series



Specifications	Model #	Spread	Tabletop Sizes	Approx. Weight
Height Spider 27 3/4" 13" x 13" Cast Iron: F17, F22 15" x 15" Cast Iron: F28 (accepts 8@ #8-#12 screws)	F17	17" diam.	24-30"sq., 30-36"rd. 24" x 30" 24" x 60-72" (2 col)	31 lbs
Column 18 ga. steel All 3" diameter	F22	22" diam.	36" sq., 42" rd. 24" x 36-48" 30" x 36-48" 30" x 60-96" (2 col) 36" x 60-96" (2 col)	46 lbs
Bolt Base 7/16" x 26 3/4" Base Plate cast iron Glides steel foot 1/2" 1/4 - #20 All - 5 glides (nylon)	F28	28" diam.	42-48" sq., 48-60" rd. 36 x 48"	63 lbs

## I Series



Specifications	Model #	Spread	Tabletop Sizes	Approx. Weight
Height Spider 27 3/4" 13" x 13" Cast Iron: I18, I22 15" x 15" Cast Iron: I28 (accepts 8@ #8-#12 screws)	I18	18" diam.	24-30"sq., 30-36"rd. 24" x 30" 24" x 60-72" (2 col)	33 lbs
Column 18 ga. steel All 3" diameter	I22	22" diam.	36" sq., 42-48" rd. 24" x 36-48" 30" x 36-48" 30" x 60-96" (2 col) 36" x 60-96" (2 col)	49 lbs
Bolt Base 7/16" x 26 3/4" Base Plate cast iron Glides steel foot 1/2" 1/4 - #20 All - 5 glides (nylon)	I28	28" diam.	42-48" sq., 60" rd.	77 lbs



## TABLETOP BASE SPECIFICATIONS

### SW Series

#### Wood Column



SW

Specifications	Model #	Spread	Tabletop Sizes	Approx. Weight
Height Spider 27 <sup>3</sup> / <sub>4</sub> " 7 <sup>5</sup> / <sub>8</sub> x 7 <sup>5</sup> / <sub>8</sub> Steel Plate: SW17, SW22 10" x 10" Steel Plate: SC17, SC22, SC28 (accepts 8@ #8-#12 screws)	SW17	17" diam.	24-30"sq., 30"rd. 24" x 30" 24" x 60-72" (2 col) 30" x 60-96" (2 col)	26 lbs
Column maple: SW17, SW22 ... 1 7/8"-4" SW28 ... 3" - 5"	SW22	22" diam.	36" sq., 36-42" rd. 24" x 36-48" 36" x 60-96" (2 col)	37 lbs
Bolt Base Base Plate Glides 7/16" x 26 3/4" cast iron steel foot 1/2" 1/4" - #20 All - 5 glides (nylon)	SW28	28" diam.	42-48" sq., 48-60" rd. 30" x 36-48"	56 lbs

Wood column finish is natural. Custom stains are available for an upcharge.

### T Series



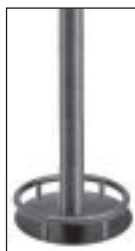
T24



T24T

Specifications	Model #	Spread	Tabletop Sizes	Approx. Weight
Height Spider 27 <sup>3</sup> / <sub>4</sub> " 13" x 13" Cast Iron: T24, T24t 15" x 15" Cast Iron: T32 (accepts 8@ #8-#12 screws)	T24	24" x 24"	24-30" sq., 30-36" rd., 24" x 30-36", 30" x 36"	22 lbs
Column 14 ga. steel 2" diameter: T24, T24T 18 ga. steel 3" diameter: T32	T24T	24" end base	24" x 48-72" (2 col) 30" x 48-96" (2 col) 36" x 60-96" (2 col) 60" rd. (3 col)	15 lbs
Bolt Base Base Plate Glides 7/16" x 26 3/4" cast iron steel foot 1/2" 1/4" - #20 End Base - 2 glides (nylon) X Base - 4 glides (nylon)	T32	32" x 32"	36-48" sq. 42-48" rd. 36" x 48"	27 lbs

### Bar Base Series



Classic  
CLSB



Budget  
BBAR

Specifications	Model #	Spread	Tabletop Sizes	Approx. Weight
Height Spider 41" 12" x 12" Steel Plate (accepts 8@ #8-#12 screws)	CLSB22	22" diam	42" diam. max.	65 lbs
Column 16 ga. steel 3" diam	BBAR17	17" diam.	30" diam. max	45 lbs
Base Plate Footring CLSB- 22" diam. BBAR17- 14" BBAR20 - 19"	BBAR20	20" diam	36" diam. max	55 lbs
Glides All - 5 glides (nylon)				

## Fitting Tabletops to YOUR OWN EXISTING BASES or bases from other manufacturers

Just looking to replace old tabletops?

Or ... you've selected table bases from another manufacturer?

No problem! The Original Fauxstone will adjust mounting plates to ensure that the **QUARIZZ®** tabletops you purchase fit well on your bases and give you the sturdiness and balance to accommodate daily wear and tear. When choosing your tabletop, follow the manufacturer's weight and size recommendations to assure that the base can handle the load. Tabletops that are too big or too heavy may cause the table to wobble and be unstable.

SW Series

Wood Column



SW

Specifications	Model #	Spread	Tabletop Sizes	Approx. Weight
Height Spider 27 <sup>3</sup> / <sub>4</sub> " 7 <sup>5</sup> / <sub>8</sub> " x 7 <sup>5</sup> / <sub>8</sub> " Steel Plate: SW17, SW22 10" x 10" Steel Plate: SC17, SC22, SC28 (accepts 8@ #8-#12 screws)	SW17	17" diam.	24-30"sq., 30"rd. 24" x 30" 24" x 60-72" (2 col) 30" x 60-96" (2 col)	26 lbs
Column maple: SW17, SW22 ... 1 7/8"-4" SW28 ... 3" - 5"	SW22	22" diam.	36" sq., 36-42" rd. 24" x 36-48" 36" x 60-96" (2 col)	37 lbs
Bolt Base Base Plate Glides 7/16" x 26 3/4" cast iron steel foot 1/2" 1/4" - #20 All - 5 glides (nylon)	SW28	28" diam.	42-48" sq., 48-60" rd. 30" x 36-48"	56 lbs

Wood column finish is natural. Custom stains are available for an upcharge.

T Series



T24



T24T

Specifications	Model #	Spread	Tabletop Sizes	Approx. Weight
Height Spider 27 <sup>3</sup> / <sub>4</sub> " 13" x 13" Cast Iron: T24,T24t 15" x 15" Cast Iron: T32 (accepts 8@ #8-#12 screws)	T24	24" x 24"	24-30" sq., 30-36" rd., 24" x 30-36", 30" x 36"	22 lbs
Column 14 ga. steel 2" diameter: T24, T24T 18 ga. steel 3" diameter: T32	T24T	24" end base	24" x 48-72" (2 col) 30" x 48-96 (2 col) 36" x 60-96" (2 col) 60" rd. (3 col)	15 lbs
Bolt Base Plate Glides 7/16" x 26 3/4" cast iron steel foot 1/2" 1/4" - #20 End Base - 2 glides (nylon) X Base - 4 glides (nylon)	T32	32" x 32"	36-48" sq. 42-48" rd. 36" x 48"	27 lbs

Bar Base Series



Classic  
CLSB



Budget  
BBAR

Specifications	Model #	Spread	Tabletop Sizes	Approx. Weight
Height Spider 41" 12" x 12" Steel Plate (accepts 8@ #8-#12 screws)	CLSB22	22" diam	42" diam. max.	65 lbs
Column 16 ga. steel 3" diam	BBAR17	17" diam.	30" diam. max	45 lbs
Base Plate Footring CLSB- 22" diam. BBAR17- 14" BBAR20 - 19"	BBAR20	20" diam	36" diam. max	55 lbs
Glides All - 5 glides (nylon)				

Fitting Tabletops to YOUR OWN EXISTING BASES or bases from other manufacturers

Just looking to replace old tabletops?  
Or . . . you've selected table bases from another manufacturer?

No problem! The Original Fauxstone will adjust mounting plates to ensure that the **QUARIZZ®** tabletops you purchase fit well on your bases and give you the sturdiness and balance to accommodate daily wear and tear. When choosing your tabletop, follow the manufacturer's weight and size recommendations to assure that the base can handle the load. Tabletops that are too big or too heavy may cause the table to wobble and be unstable.

- Ordering via phone or email

Ordering product has never been so easy! Just call us or send an email with your specifications and purchase order and we start processing your order immediately.

Phone: 760.703.0833 Email: danc@ramsglen.com

- Use of digital images for processing orders quickly and accurately

Don't see what you need? Have a particular style in mind, or need to match specific custom detailing? Want to make use of a difficult space? Have a particular color in mind? By exchanging digital images over the internet we pinpoint your needs accurately and cut down response time.

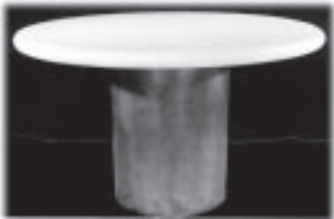
- Special Custom Services to Fit Your Needs

At The Original Fauxstone we welcome attending to and processing your specialized packing and shipping needs:

- Packing • Pack Instructions • Labels and Box Markings • Bills of Lading
- Shipping Instructions • Drop Shipping

Placing your order is as easy as 1-2-3!

**QUARIZZ®** Surface Texture + Color + Table Shape + Edge Detail + Table Base =  
The Perfect Table For Your Decor



The Original Fauxstone abides by the following practices in processing all orders. Please call us if you have any questions or concerns:

### Prices

Prices and quantities are quoted F.O.B. San Marcos, CA 92078 (U.C.C. Terms) and are subject to change without notice. Prices do not include packing, handling, and break-pack charges. Prices do not include any sales, use, excise, privilege, or similar tax, or any export or import tax or duty levied by any government. Purchaser shall pay any such applicable tax and duty.

### Terms of Sale

- Net 30 on approval of credit. Initial order requires a 50% deposit with balance due in full upon delivery.
- CA Sales Tax charged when applicable
- Order must be confirmed in writing or by email
- Payment unless otherwise specified purchase price shall be due in full upon tender of delivery of product. Extension of credit, if any, may be changed or withdrawn by The Original Fauxstone at any time.
- Invoices not paid within thirty (30) days after their due date will be subject to carrying charges. Carrying charges shall accrue and be added to the unpaid balance at the rate of one and one-half percent (1½%) per month of any overdue unpaid balance, or the maximum rate permitted by law, whichever rate is less. Purchaser shall reimburse The Original Fauxstone for the cost of collection, including, without limitation, reasonable attorney's fees of any overdue amount owed. Purchaser may not retain or set-off any amounts owed in satisfaction of any claims to the appropriate taxing authorities.
- Upon request, purchaser shall provide a tax exemption certificate.

### Orders

Please provide model number or a clear description of product size, color, and finish and/or other design options that you require. Quantities and sizes must be clearly noted. Please provide accurate shipping instructions. All orders received are subject to final acceptance or confirmation. No terms or orders are binding upon The Original Fauxstone until so accepted.

### Custom Orders

Please provide accurate specifications on all custom orders. For color matching provide fabric or color swatches. The Original Fauxstone will provide color match samples of the product and will not proceed with any custom color application without purchaser's signed written approval.

### Shipping/Freight

Deliveries are F.O.B. The Original Fauxstone's facility, San Marcos, Ca. 92078 (U.C.C. Terms). All deliveries shall be via common carrier or some other reasonable means chosen by The Original Fauxstone, if a carrier is not selected by the purchaser. All risk of loss to products shall pass to purchaser upon delivery to a common carrier.

### Delivery

Delivery is conditional on the timely receipt by The Original Fauxstone, of documents necessary for the completion of the order, any down payment, and purchaser's compliance with these terms. Partial deliveries of products are permissible. The Original Fauxstone will not be liable for any delay in the performance of orders, or in the delivery of the shipment of products, or for any damages suffered by purchaser by reason of such delay. Delivery is subject to purchaser maintaining credit satisfactory to The Original Fauxstone. The Original Fauxstone may suspend or delay performance of delivery at any time pending receipt of assurances from the purchaser of the ability to pay, including the payment of the purchase price in full or in part, or the payment of any outstanding amounts owed. The Original Fauxstone will not be liable for delays or failure to perform due, directly or indirectly beyond its control and acts of any governmental authority, wars, strikes or labor disputes, fires and natural calamities.

### Returns & Cancellations

Returns will not be accepted without prior written consent and authorization from The Original Fauxstone and must be made within five (5) days after receipt of product. If accepted, freight is to be returned prepaid and any credits or exchanges will be determined upon inspection of the condition of said products. A restocking fee of 25% will be charged on all returns. Purchaser may not cancel or change an order once paid and accepted by The Original Fauxstone except with prior written consent and upon terms that will indemnify The Original Fauxstone, against any loss.

### Proprietary Information

The Original Fauxstone retains ownership of all intellectual property rights, including, without limitation, patented trademarks, trade names, trade secrets, and copyrights, and of all drawings, illustrations, dimensions, specifications, copyrights, and performance projects, designs, plans, price customer lists, computations, and descriptions prepared in connection with or relating to products. Purchaser shall not copy or disclose to any other persons or use for any purpose whatsoever any or all of the Proprietary Information without The Original Fauxstone's prior written consent.

### Selection & Application

Purchaser is solely responsible for proper selection and application of products and agrees that s/he will use and apply products for their intended uses only and according to specifications and limitations established by The Original Fauxstone. Purchaser shall indemnify and hold The Original Fauxstone harmless from and against any and all damages, claims, or expenses (including reasonable attorneys fees) arising out or relating to improper selection, application, abuse, or use of products, other than specifications and limitations established by The Original Fauxstone.



The Original Fauxstone abides by the following practices in processing all orders. Please call us if you have any questions or concerns:

Prices

Prices and quantities are quoted F.O.B. San Marcos, CA 92078 (U.C.C. Terms)and are subject to change without notice. Prices do not include packing, handling, and break-pack charges. Prices do not include any sales, use, excise, privilege, or similar tax, or any export or import tax or duty levied by any government. Purchaser shall pay any such applicable tax and duty.

Terms of Sale

- Net 30 on approval of credit. Initial order requires a 50% deposit with balance due in full upon delivery.
- CA Sales Tax charged when applicable
- Order must be confirmed in writing or by email
- Payment unless otherwise specified purchase price shall be due in full upon tender of delivery of product. Extension of credit, if any, may be changed or withdrawn by The Original Fauxtone at any time.
- Invoices not paid within thirty (30) days after their due date will be subject to carrying charges. Carrying charges shall accrue and be added to the unpaid balance at the rate of one and one-half percent (1½%) per month of any overdue unpaid balance, or the maximum rate permitted by law, whichever rate is less. Purchaser shall reimburse The Original Fauxstone for the cost of collection, including, without limitation, reasonable attorney’s fees of any overdue amount owed. Purchaser may not retain or set-off any amounts owed in satisfaction of any claims to the appropriate taxing authorities.
- Upon request, purchaser shall provide a tax exemption certificate.

Orders

Please provide model number or a clear description of product size, color, and finish and/or other design options that you require. Quantities and sizes must be clearly noted. Please provide accurate shipping instructions. All orders received are subject to final acceptance or confirmation. No terms or orders are binding upon The Original Fauxstone until so accepted.

Custom Orders

Please provide accurate specifications on all custom orders. For color matching provide fabric or color swatches. The Original Fauxstone will provide color match samples of the product and will not proceed with any custom color application without purchaser’s signed written approval.

Shipping/Freight

Deliveries are F.O.B. The Original Fauxstone’s facility, San Marcos, Ca. 92078 (U.C.C. Terms). All deliveries shall be via common carrier or some other reasonable means chosen by The Original Fauxstone, if a carrier is not selected by the purchaser. All risk of loss to products shall pass to purchaser upon delivery to a common carrier.

Delivery

Delivery is conditional on the timely receipt by The Original Fauxstone of documents necessary for the completion of the order, any down payment, and purchaser’s compliance with these terms. Partial deliveries of products are permissible. The Original Fauxstone will not be liable for any delay in the performance of orders, or in the delivery of the shipment of products, or for any damages suffered by purchaser by reason of such delay. Delivery is subject to purchaser maintaining credit satisfactory to The Original Fauxstone. The Original Fauxstone may suspend or delay performance of delivery at any time pending receipt of assurances from the purchaser of the ability to pay, including the payment of the purchase price in full or in part, or the payment of any outstanding amounts owed. The Original Fauxstone will not be liable for delays or failure to perform due, directly or indirectly beyond its control and acts of any governmental authority, wars, strikes or labor disputes, fires and natural calamities.

Returns & Cancellations

Returns will not be accepted without prior written consent and authorization from The Original Fauxstone and must be made within five (5) days after receipt of product. If accepted, freight is to be returned prepaid and any credits or exchanges will be determined upon inspection of the condition of said products. A restocking fee of 25% will be charged on all returns. Purchaser may not cancel or change an order once paid and accepted by The Original Fauxstone except with prior written consent and upon terms that will indemnify The Original Fauxstone, against any loss.

Proprietary Information

The Original Fauxstone retains ownership of all intellectual property rights, including, without limitation, patented trademarks, trade names, trade secrets, and copyrights, and of all drawings, illustrations, dimensions, specifications, copyrights, and performance projects, designs, plans, price customer lists, computations, and descriptions prepared it prepares in connection with or relating to products. Purchaser shall not copy or disclose to any other persons or use for any purpose whatsoever any or all of the Proprietary Information without The Original Fauxtone’s prior written consent.

Selection & Application

Purchaser is solely responsible for proper selection and application of products and agrees that s/he will use and apply products for their intended uses only and according to specifications and limitations established by The Original Fauxstone. Purchaser shall indemnify and hold The Original Fauxstone harmless from and against any and all damages, claims, or expenses (including reasonable attorneys fees) arising out or relating to improper selection, application, abuse, or use of products, other than specifications and limitations established by The Original Fauxstone.

The Original Fauxstone extends the limited warranty to the original purchase of Products for personal, family, household or business use; provided that such original purchaser does not purchase products for resale (such as a distributor, wholesaler or other third-party vendor). All sales of products to distributors, wholesalers, or other third-party vendors shall be subject to the provisions of individual contracts.

"The Original Fauxstone warrants to the original purchaser that products sold by The Original Fauxstone shall at the time of sale be free from defects in material and workmanship and will, under normal use and with proper care, remain so as follows:

For a period of two (2) years after date of purchase, in the event The Original Fauxstone products are purchased by the original purchaser for commercial or personal use.

The Original Fauxstone will, at its option, (1) repair or replace defective products determined by The Original Fauxstone to have been defective during the applicable warranty period, or (2) refund the purchase price of such defected products, in the event repair and replacement are not commercially practical or timely, or the original purchaser is willing to accept such refund: provided, however, that any such refund shall be an amount equal to the purchase price paid by the original purchaser for such defective products less depreciation, for example, at a rate of twelve and one half per cent (12.5%) per yearly quarter for products warranted for two (2) years. The repair or replacement of products by The Original Fauxstone shall not warranty period provided above to purchaser.

All warranty claims must be made by the originally purchaser in writing and must be made within (30) days after the expiration of the applicable warranty period. All warranty claims must provide a description of the alleged defect, and must include a proof of purchase containing the date of purchase and the price paid by the original purchaser for products. In addition, in order to assist The Original Fauxstone in making a determination of whether or not products are defective, the original purchaser must either (1) return the allegedly defective products or (2) provide The Original Fauxstone with a photograph of the allegedly defect. In the event a photograph is submitted to The Original Fauxstone by the original purchaser, The Original Fauxstone may require, prior to any repair, replacement, or refund, that the original purchaser provide The Original Fauxstone with an affidavit warranting that such products have been destroyed and that no one will use such products in the future. Failure to comply with these warranty procedures shall void this warranty.

This limited warranty does not cover normal fading wear and tear. This limited warranty also does not cover damaged or defective products resulting from the unreason-

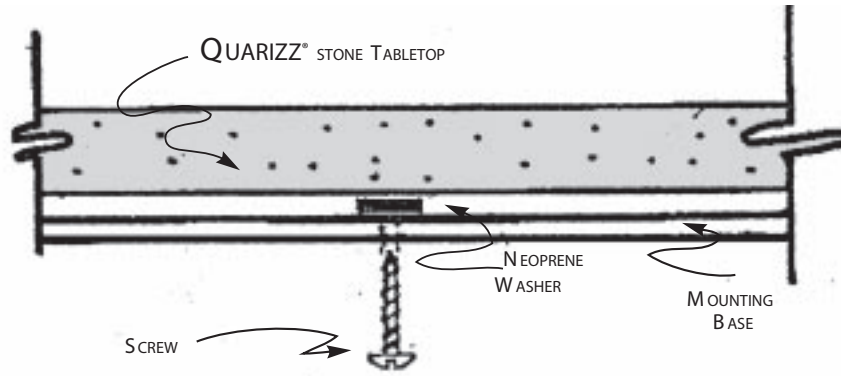
able or abusive use of products, including, use of products on slippery surfaces and use of products to support excessive weight, the lack of proper care and maintenance of products, acts of nature, the use of products for other than their intended purposes, or the use of products other than according to specifications and limitations established by The Original Fauxtone from time to time. This limited warranty is the original purchaser’s exclusive remedy and it shall not be deemed to have failed of its essential purpose so long as The Original Fauxstone is willing and able to repair or replace defective products or to refund the purchase price of products as specified herein. No allowance will be made for unauthorized repairs or replacements made by the original purchaser.

In the event The Original Fauxstone’s liability to original purchaser shall ever exceed the total purchase price of defective product. Seller shall not, in any event be liable for consequential, incidental, or special damages, including, without limitation, lost profiles, injury to persons, or other damages, whether arising from any product defect, use of products or otherwise.



## Important Mounting Plate Installation Information

The Original Fauxstone provides a Neoprene Washer in its Mounting Plate Kit to assure a moisture proof seal for your QUARIZZ® tabletop surface. The washer must be installed between the plate and the tabletop to create a seal that prevents moisture from penetrating the tabletop through the screw hole opening. Failure to install Neoprene Washer exactly as indicated by the Mounting Plate Instructions may void your QUARIZZ® tabletop warranty.



## Easy Care and Cleaning of QUARIZZ®

**QUARIZZ®** Stone Tabletops surfaces are sealed with a topcoat that automatically seals out moisture and prevents spills from penetrating the stone. Just like with any other surfaces, care should be used when cleaning. Abrasive cleaners, abrasive cloths or abrasive sponges may break down the topcoat and should not be used to clean up food residues and stains. Simply use a mild soap or dishwashing detergent with water to clean the surface. Warm water will assist in loosening and cleaning up spills such as dried on jelly, syrup, catsup or mustard. Non-abrasive cleaners such as Fantastic or 409 also work well and will not affect the table surface. Most inks can be removed with a lead pencil eraser by gently rubbing the area.

### Outdoor care

Outdoor tops and most outdoor applications can be power-washed at 1200psi. Apply a solution of liquid soap and water and let set for 2 minutes to loosen soil, then power wash or hose off. A soft bristle brush can be used in crevices to remove build up or soil.

### Spray Polishing

Clean tops before applying spray furniture polish to help resist static electricity that attracts dust and dirt and adds shine to your tops. We recommend Ace Janitorial Maintenance Furniture Polish Spray, available at any Ace Hardware Store.

### Repair Kits

Repair kits can be purchased from The Original Fauxstone to easily repair any damage to your QUARIZZ® tops.



Use a soft cloth or sponge not an abrasive material.



Use a mild soap or a non-abrasive cleaner like Fantastic or 409, not a scouring cleanser

**"Durability and style at a fraction of the cost!"**

The Original Fauxstone is pleased to announce yet another innovative application of QUARIZZ® stone surfaces. Consider QUARIZZ® Monument Signage as a viable option for your next project. Be it an industrial or residential complex, a school or institution, a hotel, a restaurant, theme park, or mall . . . choose QUARIZZ® versatility and durability you can count on - at a fraction of the cost of standard monument signage.



## Partial Client List



Park Lane Square  
Kowloon, Hong Kong

Disney World • Orlando Florida  
 Kodak Theatre • Hollywood, California  
 El Torito Restaurants • California  
 Acapulco Restaurants • California  
 Mauna Lani Resort • Hawaii  
 Anthony's Fish Grotto • San Diego, California  
 Circus Circus • Las Vegas, Nevada  
 Jonathan Club • Malibu, California  
 Hampton Inns • Hollywood, California  
 Yard House • Costa Mesa, California  
 T & J Restaurants • California  
 Island Restaurants • California  
 Outrigger Hotels & Resorts • Hawaii  
 Radisson Hotel • Berkeley, California  
 International Bay Clubs • Bahamas  
 Cohn Restaurant Group • San Diego, CA  
 Wood Ranch BBQ & Grill • Southern CA  
 Chicago Pizza & Brewery • Arizona  
 Renaissance Wailea Resort • Hawaii  
 Anhauser Bush, Inc. • Ohio, Florida  
 and many more satisfied clients . . .

Kodak Theater  
Hollywood, California

