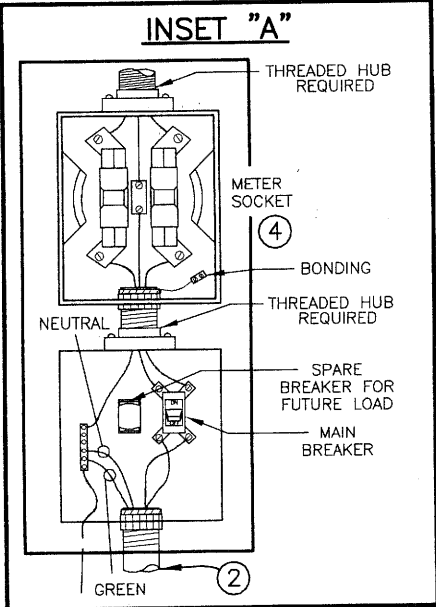
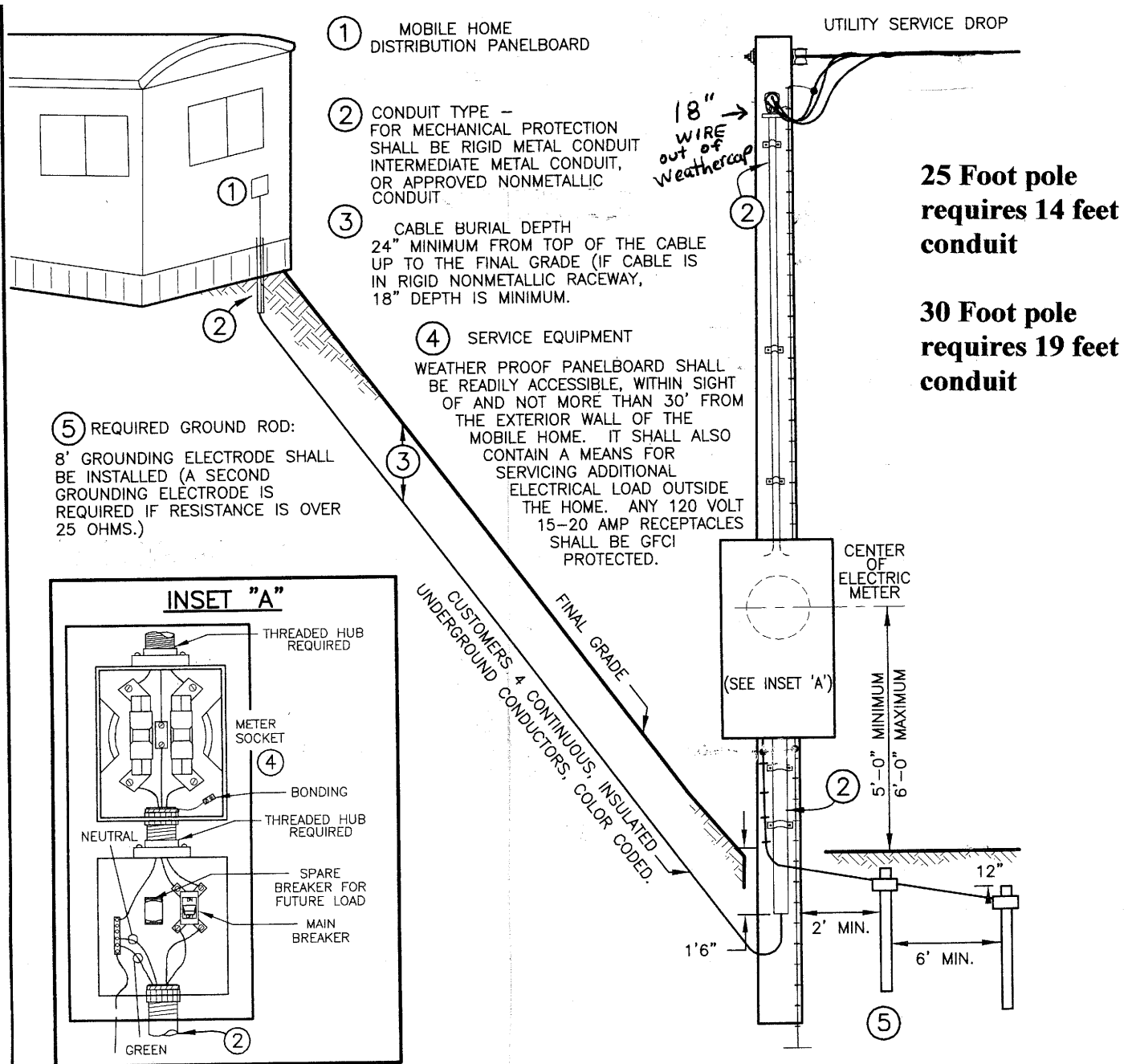




# Typical Mobile Home Service Entrance with Big Sandy RECC installed service pole.



| AMPS | SERVICE ENTRANCE WEATHERHEAD TO DISCONNECT CONDUCTOR THW OR EQUIV. |         |      |         | FEEDER CIRCUIT SERVICE POLE TO MOBILE HOME CONDUCTOR RHW,UF,URD,OR EQUIV. |         |      |         | INSULATED COPPER GROUNDING WIRE (GREEN) |
|------|--|---------|------|---------|---|---------|------|---------|---|
|      | COPPER   | CONDUIT | ALUM | CONDUIT | COPPER  | CONDUIT | ALUM | CONDUIT |   |
| 100  | #4   | 1 1/4"  | #2   | 1 1/4"  | #4  | 1 1/4"  | #2   | 1 1/4"  | #8                                      |
| 200  | #2/0   | 1 1/2"  | #4/0 | 2"      | #2/0  | 2"      | #4/0 | 2"      | #6                                      |

State Electrical Inspector must inspect and provide compliance form.