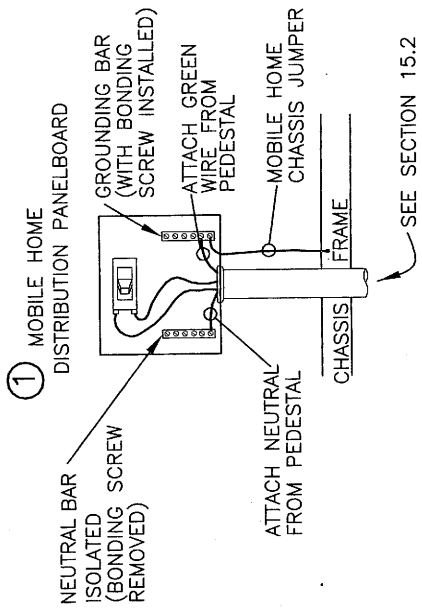


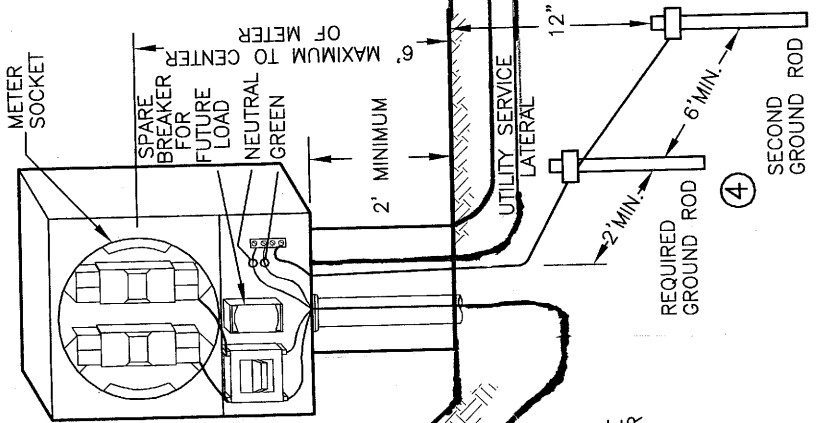


**Big Sandy RECC**

# Mobile Home Underground with Service Pedestal



② CABLE BURIAL DEPTH  
 24" MINIMUM FROM TOP OF THE CABLE UP TO THE FINAL GRADE (IF CABLE IS IN RIGID NONMETALLIC RACEWAY, 18" DEPTH IS MINIMUM.)



③ UTILITY APPROVED SERVICE PEDESTAL SHALL BE READILY ACCESSIBLE, WITHIN SIGHT OF AND NOT MORE THAN 30' FROM THE EXTERIOR WALL OF THE HOME IT SHALL ALSO CONTAIN A MEANS FOR SERVICING ADDITIONAL ELECTRICAL LOAD OUTSIDE THE HOME. ANY 120 VOLT 15-20 AMP RECEPTACLES SHALL BE GFCI PROTECTED. (SEE SECTION 1-1, A)

3" PVC Pipe Conduit  
 24" Minimum Burial Depth  
 Use long sweeping "L" at Utility Pole  
 Leave Pipe 3-4" from pole  
 Must have a pull string installed in conduit



String

Member must provide 3" PVC Conduit, Trench and backfill