

Graphic Design Portfolio

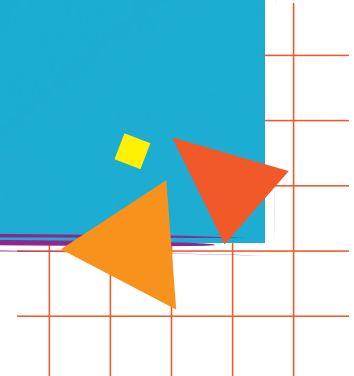
Jennifer Valentine, 319.210.7033



Eau Gallie Yacht Club



eau gallie tennis club



Project Description: T-Shirt design.

Eau Gallie Yacht Club



Project Description: T-Shirt designs for merch store

321 Savages



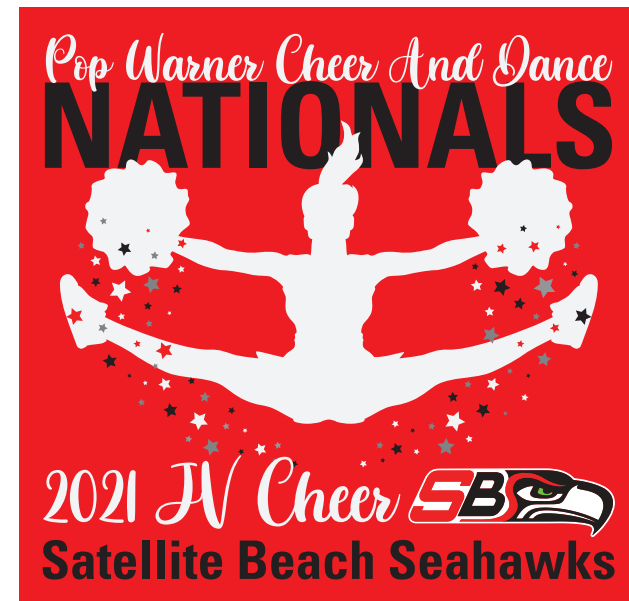
A promotional graphic for 321 Savages tryouts. The top half features four action shots of players in black and red uniforms on a field. A central graphic with the text "321 SAVAGES" in a stylized, jagged font is overlaid. The bottom half is a black banner with white and red text.

BECOME A SAVAGE

7v7 2022 Tryouts • AGES 8-18
Space Coast Communities Sports Complex
DEC 11, 1-4 • TRYOUT FEE \$20

Project Description: Social Media Ad.

Satellite Beach Seahawks



Project Description: Post Season Shirts for cheer and football teams

Satellite Beach Seahawks



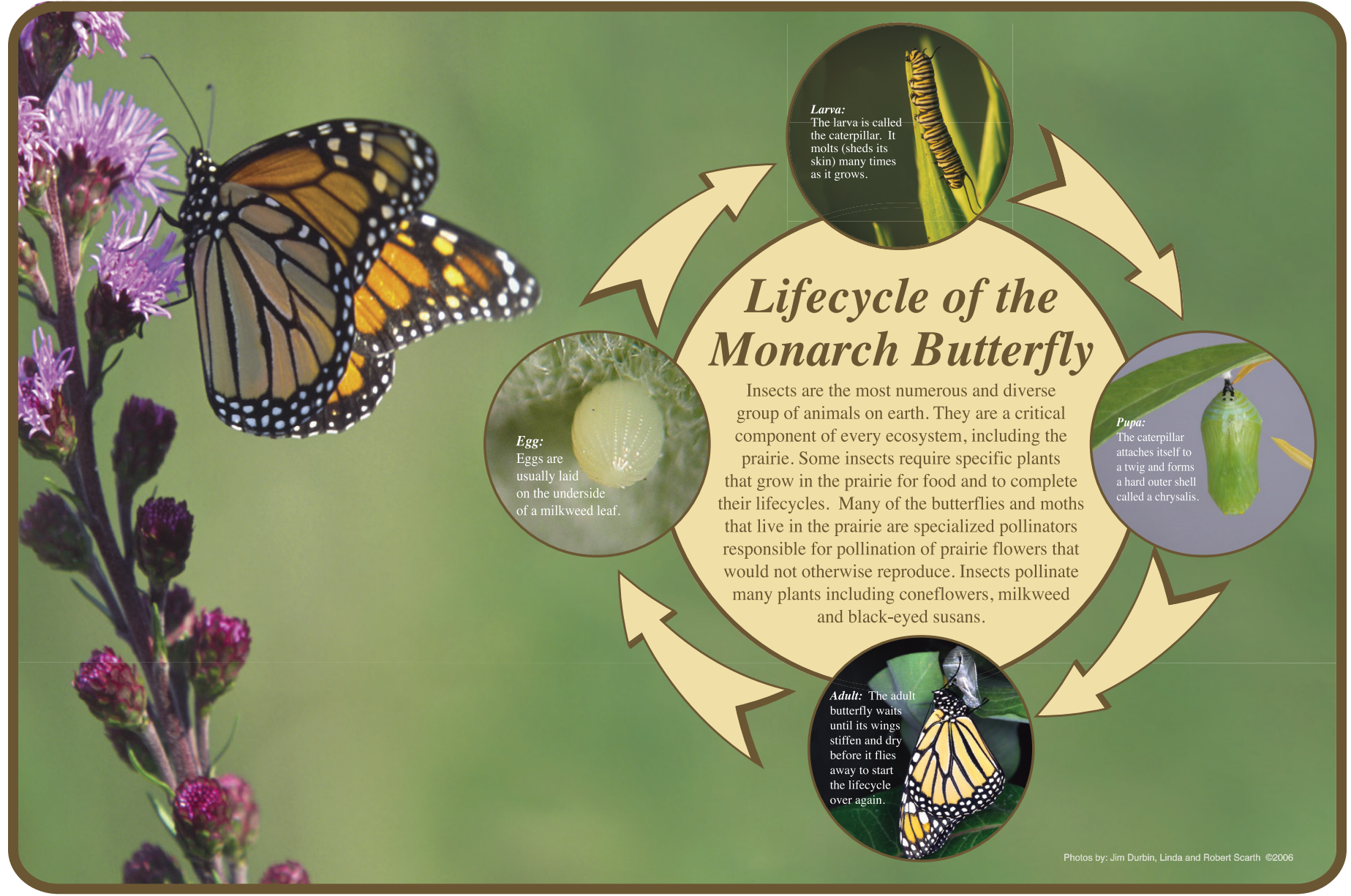
Project Description: T-Shirt design for breast cancer awareness month.

Satellite Beach Seahawks

The
ACCIDENTALS

Project Description: Logo and shirt design.

Linn County Conservation



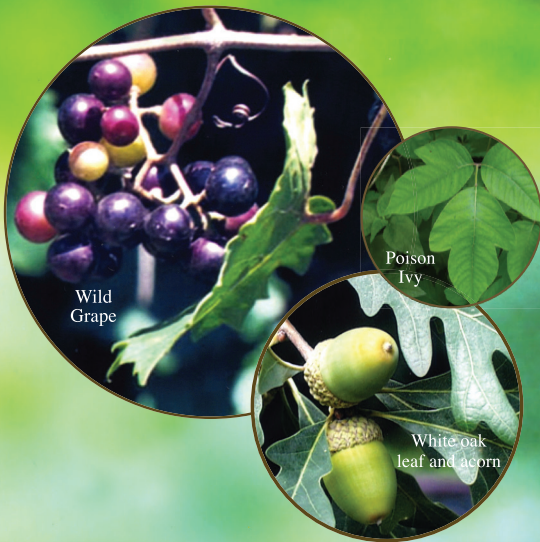
Project Description: Informational posters for public trails.

Linn County Conservation

Forest Features

This portion of the savanna trail is more densely wooded and has transitioned into forest. Red and white oak trees are both found in this forested area. The white oak family has rounded leaf lobes while the red oak family has pointed leaf lobes. The acorns of each family are eaten by wildlife. However, wildlife shows a preference for the more palatable white oak acorns over the bitter red oak acorns (*background photo*). American Indians also preferred the white oak acorns since they required less boiling to prepare them for food.

Maple, cherry, basswood and hickory trees are also found in this forest. Several vines including Virginia creeper, poison ivy, wild grape and green briar can be seen scaling the tree trunks. Many herbaceous ground-dwelling plants also grow here. It is always enjoyable to visit the savanna and forest, but spring is an especially colorful time to view the many wildflowers found in this area.



Wild
Grape

Poison
Ivy

White oak
leaf and acorn

Photos by: Iowa State Extension

Project Description: Informational posters for public trails.

Linn County Conservation

Wetland Plants

Wetland habitats provide a variety of water depths and soil types for plants to grow. Wetland plants are adapted to growing in saturated soil. Some wetland plants grow below the surface of the water (submergent) and others grow through and above the water (emergent). Other plants have floating leaves at the water's surface.

American Indians historically used *cattails* for many purposes. Roots were collected and eaten like potatoes. Young shoots were eaten raw or cooked. In the spring, the reproductive spike was collected, cooked and eaten like corn-on-the-cob. Pollen from the flowering spike was collected and used as a type of flour. In the fall, the fluffy head of the spike was collected and used for diaper stuffing. Cattail stalks and leaves were woven into mats and baskets.

Pickeral weed has attractive purple flowers that appear throughout the summer. Many types of wildlife such as muskrats and ducks eat the leaves and rhizomes of pickeral weed. American Indians ate pickeral weed seeds fresh or dried them to be made into breads and cereals.

Watershield can be found in many parts of North America and throughout the world, but is rare in Iowa. Unlike other waterlilies that have large showy flowers, watershield has inconspicuous red flowers that float on the water's surface. A gelatinous substance covers the underside of the leaves. American Indians ate the tuberous roots, which were eaten raw, boiled or baked. Waterfowl also devour large amounts of this plant.



Photo by: Gary Hamer

Project Description: Informational posters for public trails.

Lego League: Knano Knights



Project Description: Vector illustration for team t-shirts.

Western Fraternal Life



Project Description: Banner for Houby Days parade.

Western Fraternal Life

Project Description: Fundraising poster for Czech American TV.



www.catvusa.com

**Help keep
Czech American TV
on the air**

please donate today

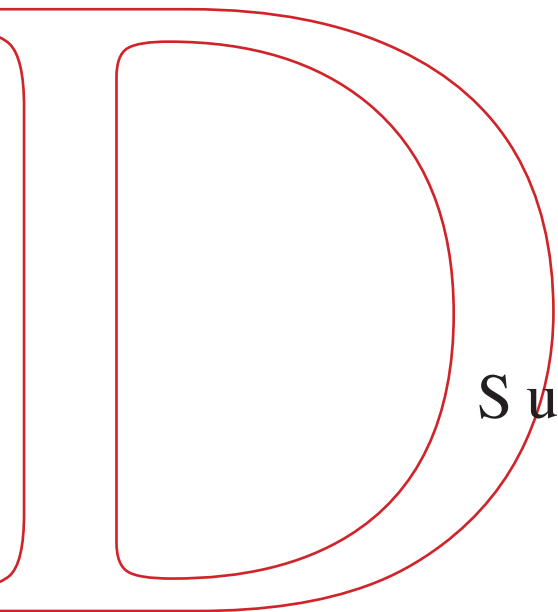
As of February 17, 2009 all analog broadcasts must be in digital format. We need your support to update the broadcasting equipment. Help us keep this valuable cultural asset on the air. Please donate today!

Angry Gnome LLC



ANGRY GNOME
onlinemultiplayergaming.com

Project Description: Logo Set and Illustration.



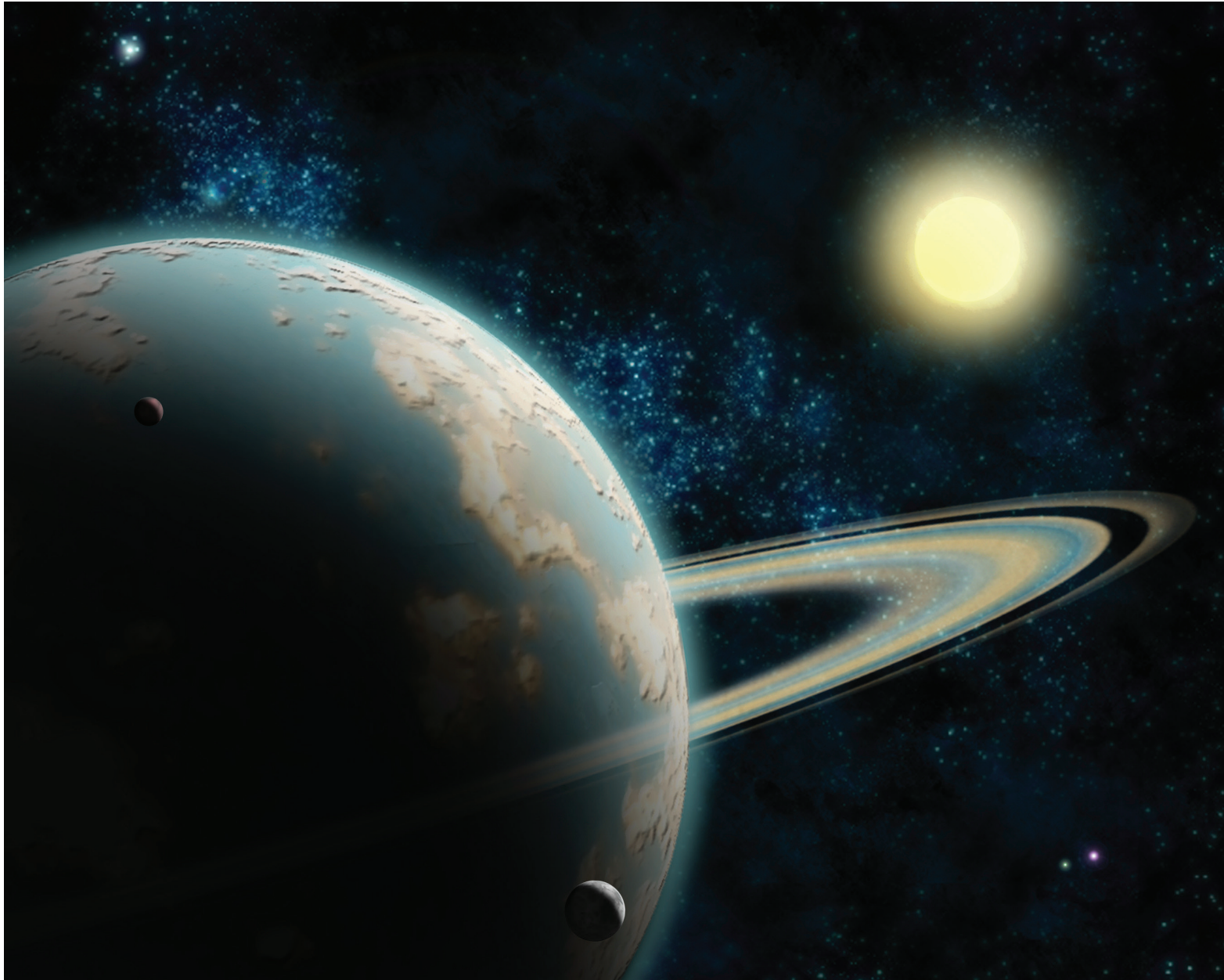
Supplemental Design

These designs were created for my enjoyment.





Project Description: Photo with text overlay.



Project Description: Photo transformed into planetary scape.



Project Description: Vector illustration.



The Phoenix

How long were you asleep waiting for something to transpire?
Oh but you must have slept good.
Look how you stretch and hit the ground running.
When you woke up the sun was just starting to peak over the earth,
but the sky it was already amazing! So Vibrant!
I know you dreamt about it.
With your eyes opened slightly you saw that red flowing all around you
with all that energy waiting to come up through than, wow
Bursting forth like stallions still wild in the plains you felt your *destination!*
Community of **going, doing, being, living.** Strength.
Pound it out of those sleeping ashes you wonderful PHOENIX

Open those strong arms and soar into the red and orange
flowing sunrise over the green earth.
Sound out loudly, there are those still sleeping.
They need to hear your
victory cry.

3.05

Project Description: Photo combined with text.

Imagine



Project Description: Vector illustration.