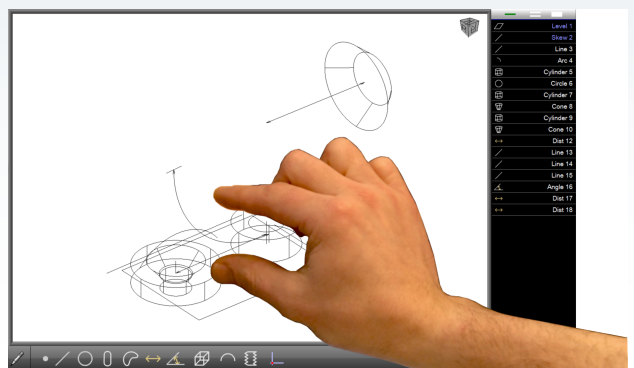


# M3 Software for Manual CMM's!

-A simple yet powerful software solution for manual CMM retrofits.

- **Clean and Intuitive User Interface**

The M3 CMM Software provides the same intuitive user interface that Metlogix is known for. Measurement, tolerancing, programming, and reporting are all accessed through simple icon-driven screens and menus using touchscreen controls or a keyboard and mouse.



3D part views can be manipulated and rotated to the desired perspective.

- **Renishaw® Touch Probe Support**

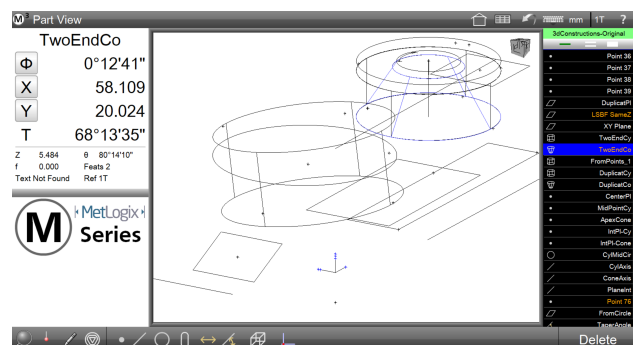
Make use of any of the standard Renishaw® probe holders (TP2, TP20, PH1, PH6 etc), supporting a wide range of styli shapes and sizes. Additionally the MH8 manual indexable probe can be used to calibrate a wide range of probe orientations, allowing for access to hard to reach probing surfaces.



A variety of touch probe styli can be used to meet the needs of your inspection application

- **Features and Constructions**

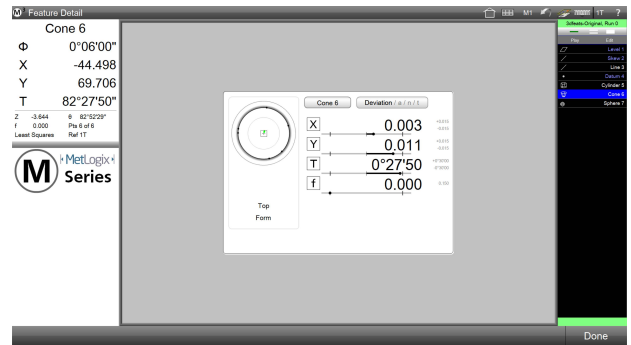
Supporting industry standard feature measurement and popular construction types. Toggle feature construction sub-types quickly with the change feature type button. Expanded 3D feature geometries are supported through touch probe measurement of features in the XY, YZ and ZX planes. Measure planes, cones, cylinders and spheres in 3-D part space and then view results in the 3-D part view.



Feature measurements can be performed using common touchscreen operations such as pan and pinch zoom, or use conventional mouse operations like point and click.

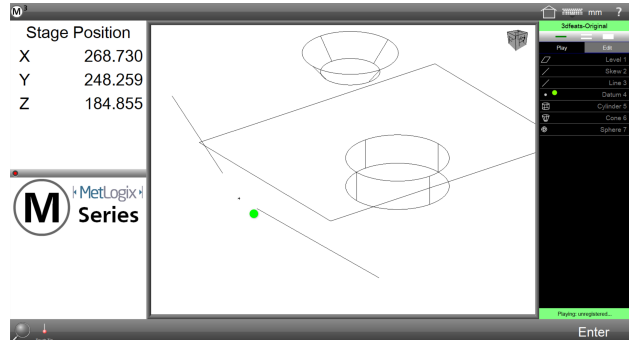
- ## Geometric Tolerancing and Part Programming

Apply popular geometric tolerance controls to measured and constructed features using the industry leading Metlogix tolerance system. Apply nominal and tolerance limits quickly, and view results accurately, in the large and easy to read data views.



Measure features, set nominals, apply tolerances and view deviation results quickly and easily.

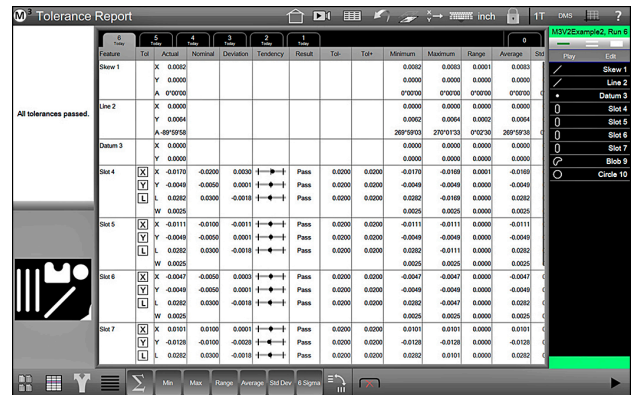
- Record inspection routines for simple playback of measurements, tolerance controls, and data handling and printing steps. Just follow the "green bouncing ball" for guidance through your recorded program steps.



Playback or edit groups of measured, constructed and created features.

- ## Runs Database and Results View

Track and analyze measurement run results for your M3 part programs. View past measurement results quickly and easily using the tabbed runs database program results view. Perform quick cross-run analyses of feature results using the *Pivot* data mode. Add quick statistical feedback including min, max, range, average, and 6sigma to your data for more detailed analyses of result trends and measurement repeatability.



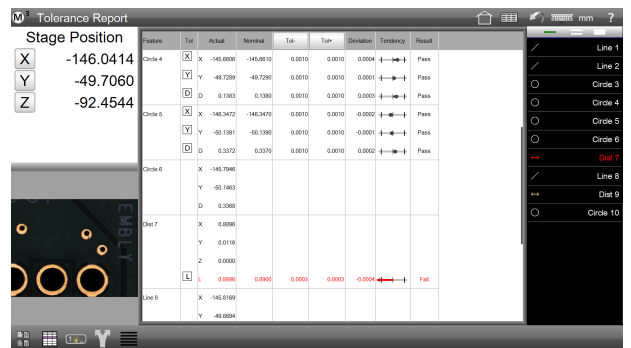
Tabs across the top of the runs database provide access to measurement results for individual program runs. Statistics are shown at the right.

- ## Flexible Report Content and Formatting

M3 software supports full customization of the data format, header information, and header and footer graphics. Part view graphics, time and date stamps, and operator information can all be included for any report type. Reports can be viewed, printed, or exported at the conclusion of a single inspection routine, or they can be included in a part program. Reports may be printed directly to a local or networked, Windows-compatible printer. Data can also be exported in a variety of formats to local or network storage locations.

Built-in report data formats include:

- European
  - Tolerance
  - CSV
  - European 2



View, print and export report data at the conclusion of your inspection routine.

- **CMM Machine Integration**

Ask your MetLogix representative about the wide variety of encoder interface technologies and other hardware supported in the M3 Manual CMM package.

- **Support for All Current "Industry Standard" Software Stage Calibration Methodologies**

Robust and reliable machine calibration can be achieved using popular machine correction methods including Linear Error Correction(LEC), Segmented Linear Correction(SLEC), Non-Linear Error Correction(NLEC), and squareness correction.

- **Industry Leading Operating System Platforms**

Supported by the Windows 10 operating system, M3 users gain the performance and reliability of a globally recognized software solutions, as part of their measuring machine package.



**Help and Resources.**

Please visit the support section at [www.metlogix.com](http://www.metlogix.com) for access to Metlogix product documentation.

Watch tutorial videos for popular Mx functions at <http://www.youtube.com/metlogix>

Join the discussion on Facebook, search "Metlogix".

Renishaw is a trademark of Renishaw plc

Part number 17010-01  
August 2020  
© Copyright 2020  
All rights reserved. MetLogix, Inc.



175 Canal Street, Suite 503 Manchester, NH 03101 USA

■ Tel: 603.836.4452 ■ Fax: 603.369.6499 ■ Email: [support@metlogix.com](mailto:support@metlogix.com) ■ Web: [www.metlogix.com](http://www.metlogix.com)