



Certified
CP
omparator
roducts

CC-30 Contour Projector®

The **CC-30** is a large capacity optical comparator that offers a large, bright image and compact footprint.

With the 30 in diameter screen at eye level and easy access to parts and fixtures, the CC-30 is designed to provide great performance right where you need it.

- Standard mercury-arc profile lighting and optional mercury-arc surface light
- Rigid construction and heavy duty components ensure long-term reliability
- Optional VidiProbe® video measurement and eCAD® virtual chart gage systems offer full automation

Proudly designed and manufactured in
the United States of America



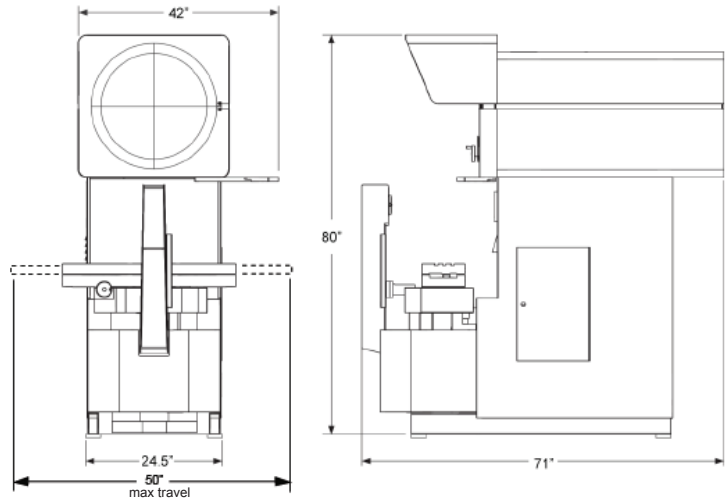
Large Capacity Optical Comparator



CC-30 Contour Projector

Available Options and Accessories:

- Extended X and Y-axis travel
- Adjustable iris assembly
- Digital video screen image capture
- EdgeScan internal automatic edge detection (requires a Quadra-Chek DRO)
- Projectron® automatic grayscale edge detection (requires a Q-Check DRO)
- VidiProbe™ Video Measurement
- Fixture and calibration reticles
- Overhead light shield
- Glass and plastic overlay charts
- High magnification collimator
- Swing away lamphouse
- Surface illuminator concentrator (reduces FOV at selected mag)
- Rotary Indexer
- Service and support contracts



Optional Software:

- MeasureFit® Plus
- SmartReport® with real-time statistics
- Quadra-Chek® QC-Wedge (requires Microsoft® Excel™)
- eCAD® for electronic CAD overlay & virtual chart systems
- eChek™ Metrology Software

Crated : 2,345 lb
Crated for Export: 2,700 lb

	Standard	Optional
XY Travel Range	15 x 9 in	15 x 10 in, 18 x 9 in, 18 x 10 in
Helix Angle Range		±7.5° with pivoting worktable assembly and zero stop
Focus Travel (Z)	3 in with precision fine adjustment	
XY Positioning	Precision, cast iron vertical elevating assembly and heavy duty X-axis motion	
Throat Clearance	20 in	
XY Scale Resolution	0.00004 in	0.00002 in
XY Drive System	Motorized, DC servo, with variable speed joystick and X & Y axis manual fine adjustment	
Worktable	Heavy duty cast iron nickel plated worktable, 32 x 8 in	
Recommended Maximum Load Capacity	250 lb	
Optical System	Telecentric with upright, and un-reversed image	
Screen Size	30 in diameter viewing area screen, with integral hood	
Screen Type	Ground glass with 90° centerlines and clips for mounting standard overlay charts	
Protractor	Screen rotation protractor with ± 360° motion, digital display, 0.01° or 1° display	
Working Distance	8.4 in	
Lens	10X	20X, 31.25X, 50X, 62.5X, 100X
Lens Mount	Fixed, one position mount	Motorized 5 position lens turret
Illumination	200 W mercury arc direct projection with green filter	200 W mercury arc surface
Electronics	Choice of Quadra-Chek® QC-100 or QVI Q-Check®	Quadra-Chek QC-200 or QC-300 Q-Touch™
Power Requirements	115 VAC, 60 Hz, 1φ, 2500 W	