



QVI® SprintMVP™ 200|250|300

SprintMVP benchtop systems offer fully automatic measurement with high performance and affordability. Three SprintMVP models are available to suit your measurement needs.

- Granite base and column for stability with precision CNC X,Y and Z stages
- 3-axis joystick and CNC motion control
- Motorized zoom lens optics with high resolution digital color camera

Automatic Benchtop Measuring Machines



SprintMVP 250 model shown

SprintMVP Measuring Ranges (mm)				
Models		X	Y	Z
	200	200	150	150
	250	300	150	150
	300	300	300	150



QVI® SprintMVP™ 200|250|300

Measurement Software

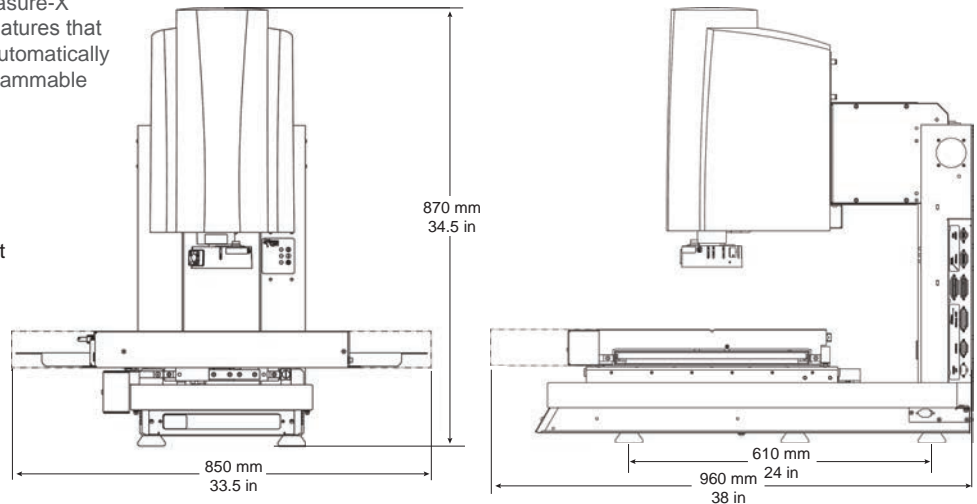
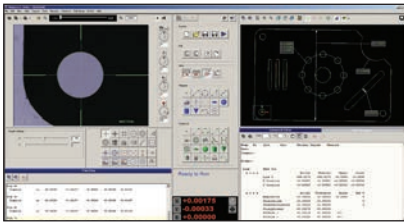
Measure-X® is the world's most popular metrology software. When paired with SprintMVP, Measure-X makes it easy to accurately measure fine features that require multi-step measurement routines, automatically combining autofocus, edge detection, programmable lighting, laser scanning and touch probing.

Optional Measurement Software

- MeasureFit®
- SmartReport® powered by QC-CALC™
- CAD interface
- SmartFeature® software for FDA compliant environments

Miscellaneous Options

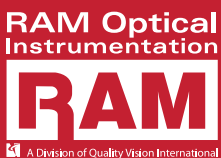
- Renishaw touch probe and change rack
- Manual or motorized rotary indexer
- NIST traceable calibration artifact
- Dust cover



SprintMVP 300 Model Shown

System Weight:
 200 Model - 110 kg
 250 Model - 113 kg
 300 Model - 136 kg

		Standard	Optional
X, Y, Z Travel	200	200 x 150 x 150 mm 8 x 6 x 6 in	
	250	300 x 150 x 150 mm 12 x 6 x 6 in	
	300	300 x 300 x 150 mm 12 x 12 x 6 in	
X, Y, Z Scale Resolution		0.5 µm (0.00002 in)	0.1 µm (0.000004 in)
Stage Drive System		Precision, motorized compound XY stage and linear Z stage with 3-axis joystick control	
Max Recommended Stage Load		200, 250 Models - 20 kg (44 lb) 300 Model - 25 kg (55 lb)	
Working Distance		62 mm (2.5 in) (with standard VectorLight™)	
Imaging Optics		6.5:1, 10 position motorized zoom lens	
Lens Attachments			0.5X, 0.75X, 1.5X, 2.0X
Field of View *Highest available magnification	Low Mag	High Mag*	
	9.1 mm (0.36 in) diagonal	0.6 mm (0.02 in) diagonal	
Metrology Camera		QVI Digital, Megapixel Metrology Camera	
Magnification on 24" LCD Monitor		24x to 370x on-screen digital/optical magnification standard with full feature Measure-X layout	12x to 740x on-screen digital/optical magnification with optional add-on lenses and dual monitor user interface
Illumination		LED VectorLight™ programmable ring light with 6 rings and 7 sectors, LED backlight, LED square-on surface light	LED VectorLight™ programmable ring light with 6 rings and 8 sectors
Controller		Windows™ Controller with Speed/Bus ICORE 5 Quad CPU, 4 GB RAM, 160 GB hard drive	Single flat panel LCD monitor, or dual flat panel LCD monitors; keyboard, mouse
Temperature		20 ± 1° C (rated), 15-30° C (safe operating range)	
Power		100/240 VAC, 50/60 Hz, 1 phase, 100 W	
XY Area Accuracy (at 20°C) ^{1,3}		E ₂ : (2.5 + 4L/1000) µm (200 Model) E ₂ : (2.5 + 6L/1000) µm (250, 300 Models)	
Z Linear Accuracy (at 20°C) ^{2,3,4}		E _z : (3.8 + 8L/1000) µm (All Models)	
Notes		1. Where L = length in mm, with evenly distributed 5 kg load in the standard measuring plane, depending on load distribution, accuracy at maximum rated load may be less than standard accuracy. XY axis artifact: 25 intersection grid reticle in the standard measuring plane. The standard measuring plane is defined as a plane that is 25 mm above the worktable. All optical accuracy specifications at maximum zoom lens setting. 2. Z axis artifact: QVI step gage or master gage blocks. 3. E _z , Z axis linear and E ₂ , XY area accuracy standards are described in QVI Publication Number 790762. 4. E _z , Z axis accuracy specifications tested with optional 2.0X add-on lens.	



1175 North Street
 Rochester, NY 14621
 Phone: (585) 758-1300 • (877) 764-6399
 Fax: (585) 506-4307
www.ramoptical.com

