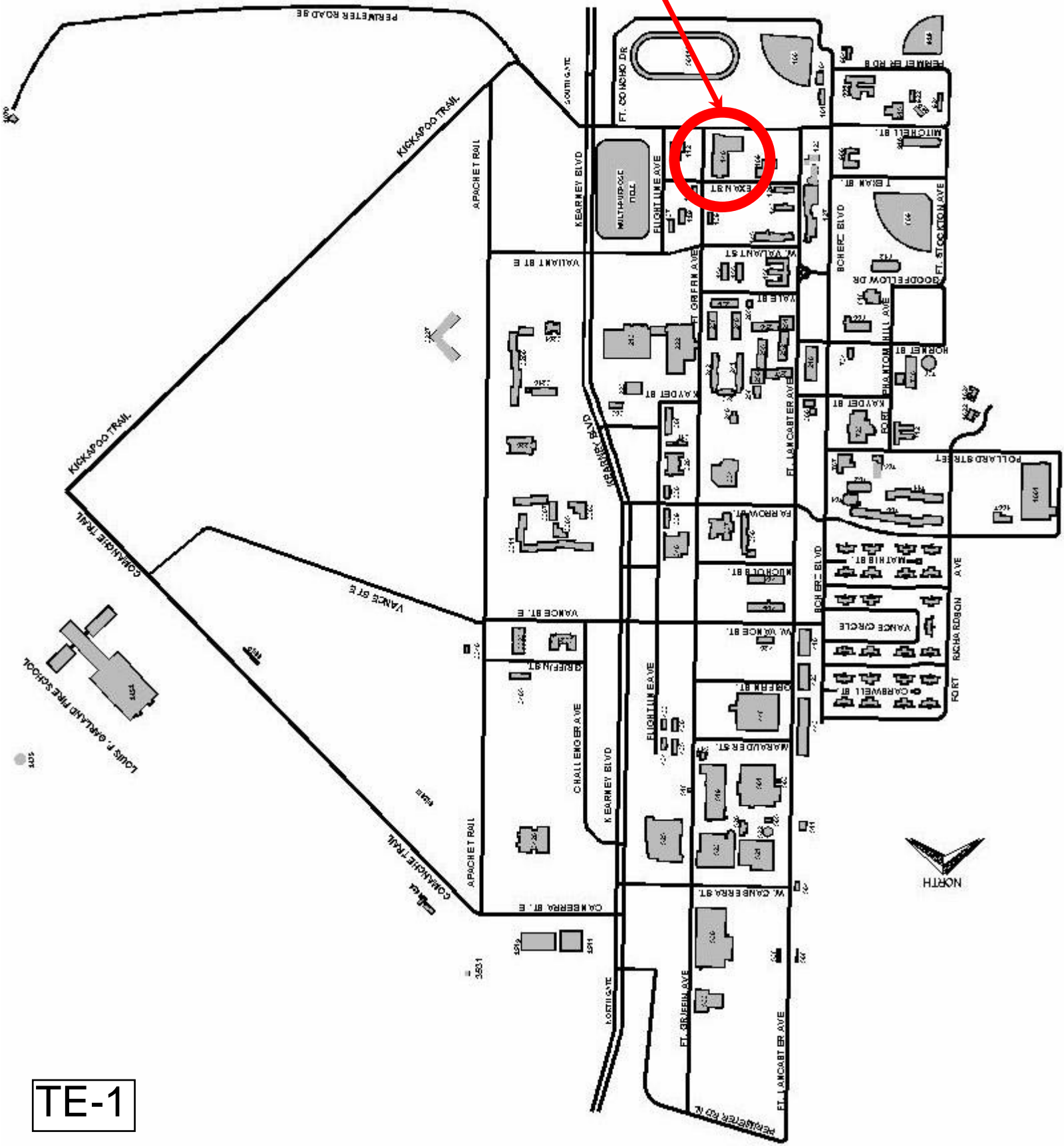
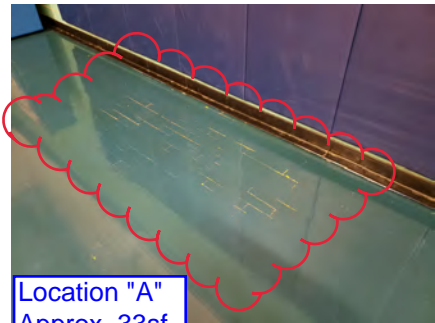


Project Site



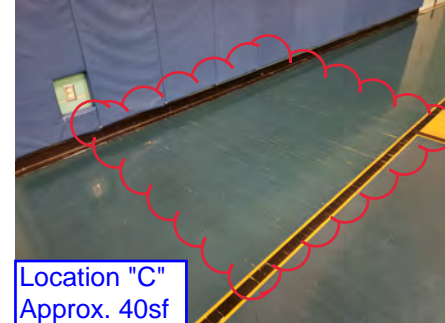
TE-1



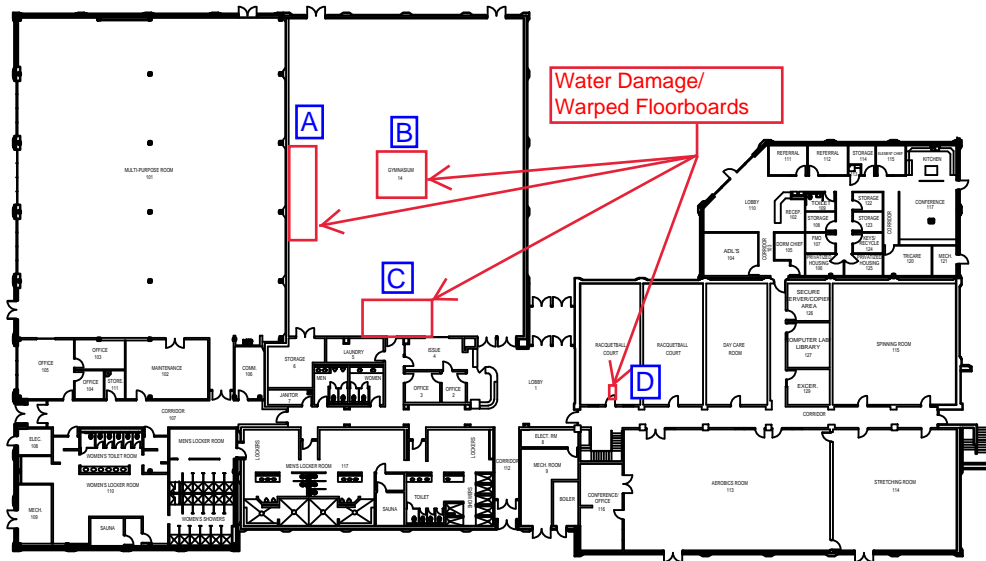
Location "A"
Approx. 33sf



Location "B"
Approx. 16sf

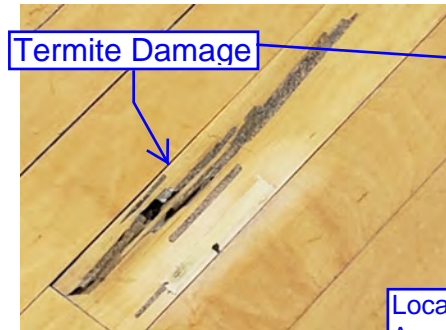


Location "C"
Approx. 40sf

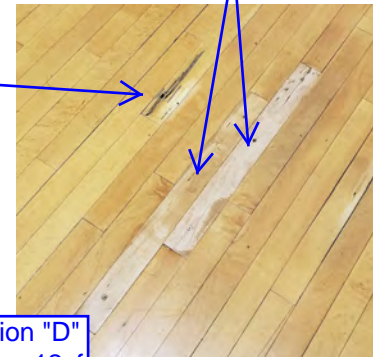


Water Damage/
Warped Floorboards

*Previously repaired boards are split due to using screws.
*Screws are not countersunk and protrude up.



Termite Damage



Location "D"
Approx. 12sf

TE-2

General Notes/Symbols/Legend

No.	Revision/Issue	Date

17 Civil Engineer Squadron
Goodfellow AFB



Date: 01/17/2018

Scale: 1/64" = 1' - 0"

Drawn By: SSGT Lelton, Kara Sohn

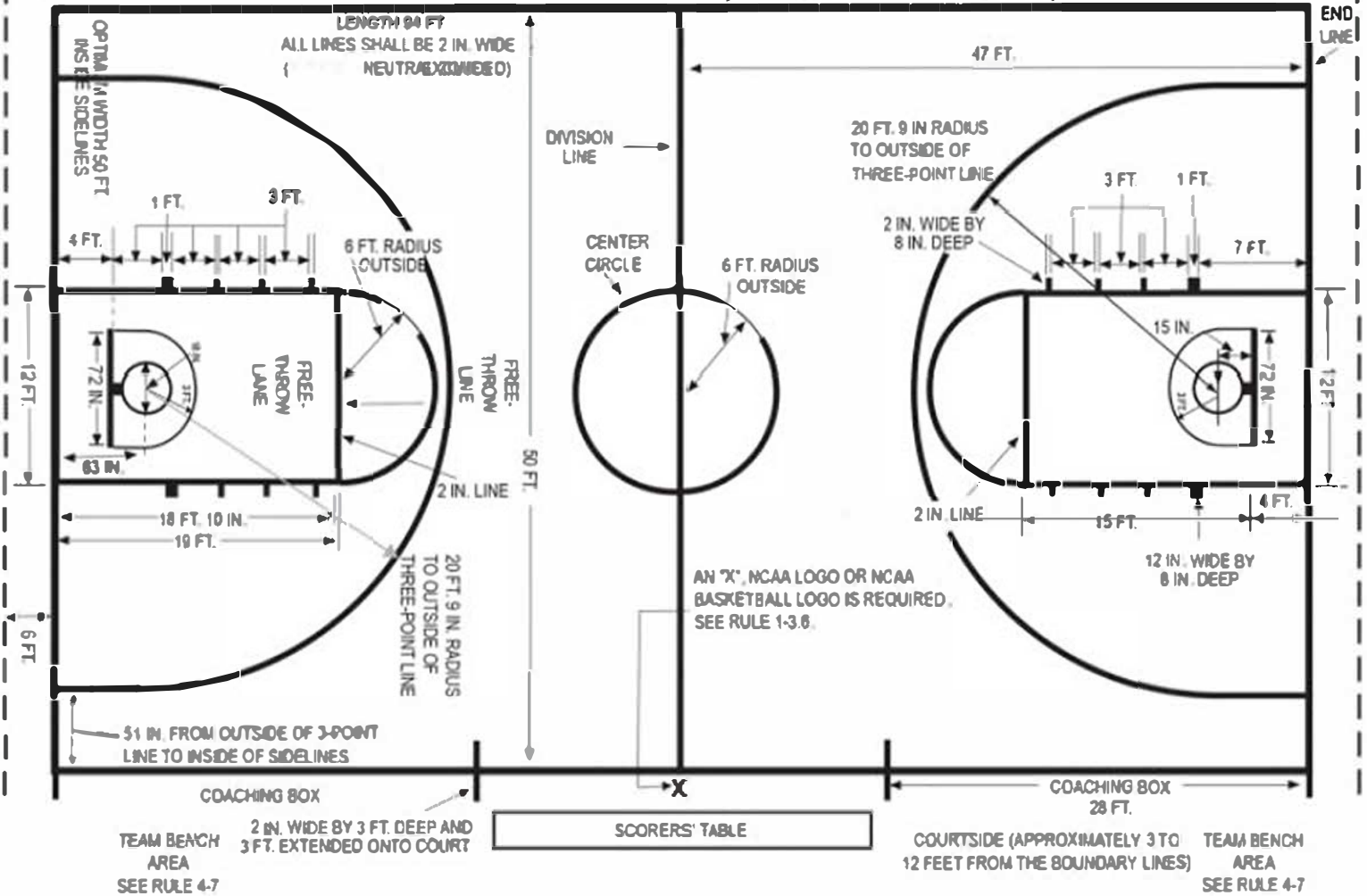
Revised: 05-1182/054-1282

MINIMUM of 3 FT.
Preferably 10 ft. unobstructed space outside

SIDELINE
(Must be at least 8 inches wide if a contrasting color belt is used instead of 2-inch-wide line.)

RESTRAINING LINE

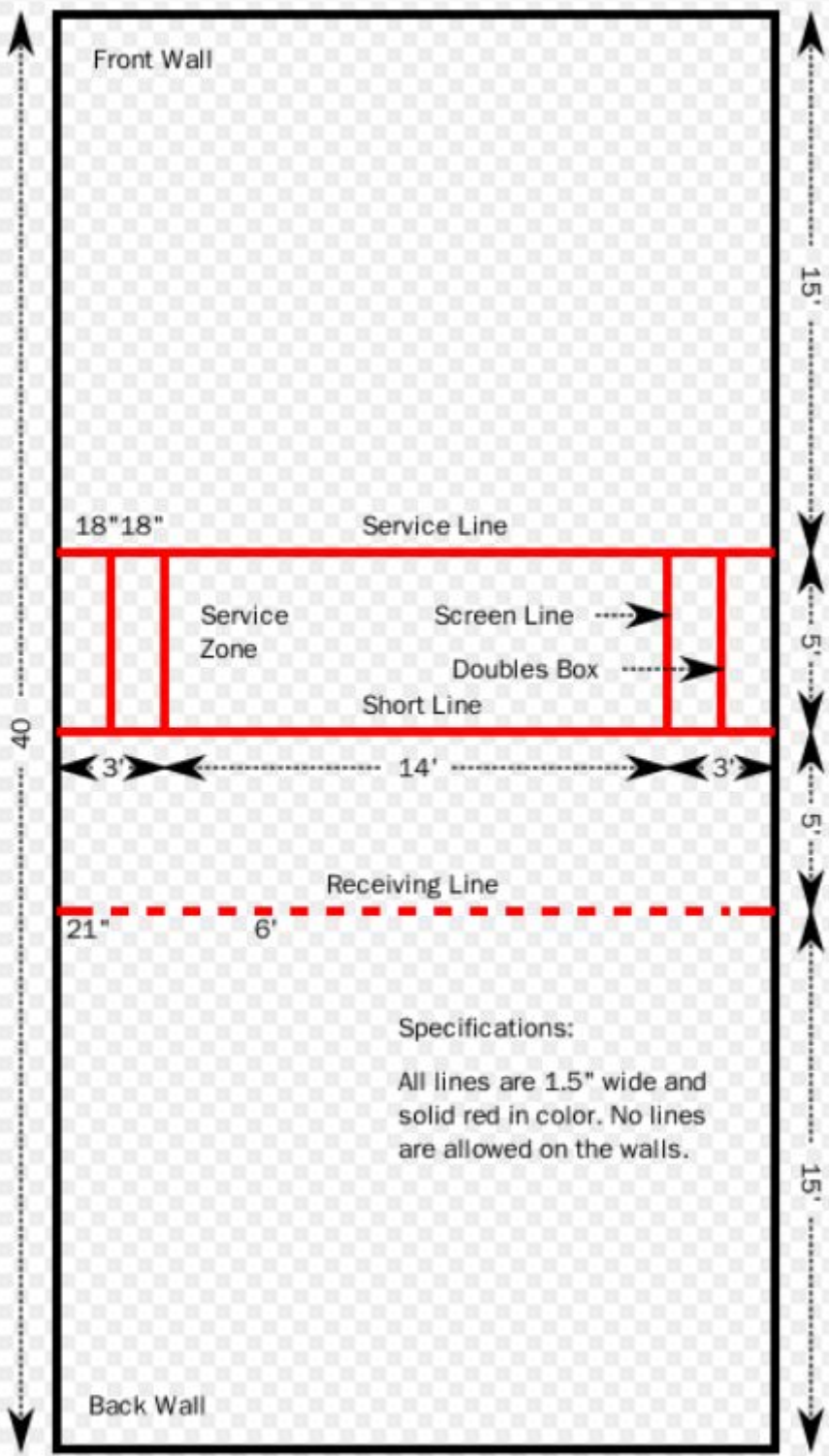
END LINE



(Diagram courtesy of the NCAA.)



Center Court Emblem is approx. 12' in diameter with 18" lettering



Front Wall

18"18"

Service Line

Service Zone

Screen Line

Doubles Box

Short Line

3'

14'

3'

Receiving Line

21"

6'

Specifications:

All lines are 1.5" wide and solid red in color. No lines are allowed on the walls.

Back Wall

TE-5

20'

15'

5'

5'

15'

40'