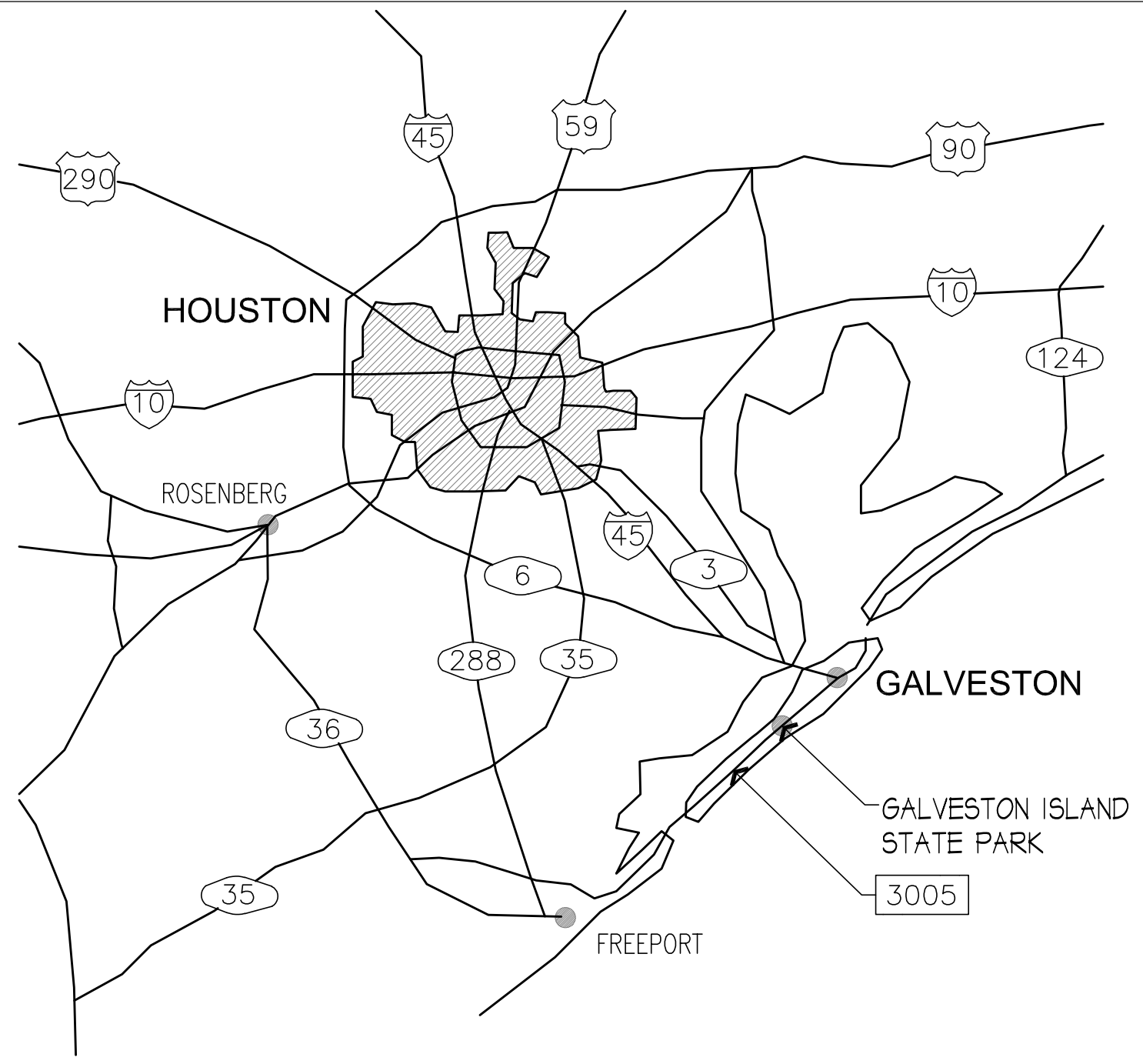


COUNTY LOCATION MAP
NOT TO SCALE



VICINITY MAP
NOT TO SCALE



SITE LOCATION MAP
NOT TO SCALE

Legend

- Campsite #60
- ★ Green Flush location
- Restroom

SITE ADDRESS:
Galveston Island State Park
14901 FM 3005
Galveston, TX 77554

DESIGN TEAM

LANDSCAPE ARCHITECT
William M. McDonald Jr., ASLA
Texas Parks & Wildlife Dept.
Phone: 512.389.4916
Email: william.mcdonald@tpwd.texas.gov

PROJECT

**GALVESTON STATE PARK
GREEN FLUSH RESTROOM**

PROJECT NO: MR12735 DATE: OCT. 2025

INDEX OF DRAWINGS

SHEET NO.	DESCRIPTION
-	COVER SHEET
L1	DEMO, SITE PLAN, FLOOR PLAN, & SITE PREP DETAIL
L2	SITE DETAILS

BUILDING CODE SUMMARY

A. INTERNATIONAL CODE COUNCIL ADOPTIONS*	
1. BUILDING CODE	INTERNATIONAL BUILDING CODE 2024
2. STRUCTURAL CODE	INTERNATIONAL BUILDING CODE 2024
3. PLUMBING CODE	INTERNATIONAL PLUMBING CODE 2024
4. MECHANICAL CODE	INTERNATIONAL MECHANICAL CODE 2024
5. GAS CODE	INTERNATIONAL FUEL GAS CODE 2024
6. RESIDENTIAL CODE	INTERNATIONAL RESIDENTIAL CODE 2024
7. EXISTING BUILDINGS	INTERNATIONAL EXISTING BUILDINGS CODE 2024
* International Fire Code omitted in lieu of TPWD's implementation of National Fire Protection Association codes.	
B. NATIONAL FIRE PROTECTION ASSOCIATION	
1. ELECTRICAL CODE	NATIONAL ELECTRIC CODE, NFPA-70 2023
2. FIRE CODE	NFPA - 1 2021
3. LIFE SAFETY CODE	NFPA - 101 2021
C. ENERGY	
1. ENERGY	INTERNATIONAL ENERGY CONSERVATION CODE 2024
D. WATER	
1. WATER SUPPLY	TEXAS ADMIN CODE - TITLE 30, PART 1, CHAPTER 290
2. LANDSCAPE IRRIGATION	TEXAS ADMIN CODE - TITLE 30, PART 1, CHAPTER 344
3. ON-SITE SEWAGE	TEXAS ADMIN CODE - TITLE 30, PART 1, CHAPTER 217
E. ACCESSIBILITY CODES	
1.	U.S. DEPT. OF JUSTICE, 2010 ADA STANDARDS FOR ACCESSIBLE DESIGN
2.	ARCHITECTURAL BARRIERS ACT ACCESSIBILITY GUIDELINES; OUTDOOR DEVELOPED AREAS 2015
3.	2012 TEXAS ACCESSIBILITY STANDARDS, ELIMINATION OF ARCHITECTURAL BARRIERS, TEXAS GOVERNMENT CODE, CHAPTER 469
F. PLAYGROUND SAFETY CODE	
1.	ASTM F1487-17, STANDARD CONSUMER SAFETY PERFORMANCE SPECIFICATIONS FOR PLAYGROUND EQUIPMENT FOR PUBLIC USE
2.	ASTM F2223-15, STANDARD GUIDE FOR ASTM STANDARDS ON PLAYGROUND SURFACING

SCOPE OF WORK

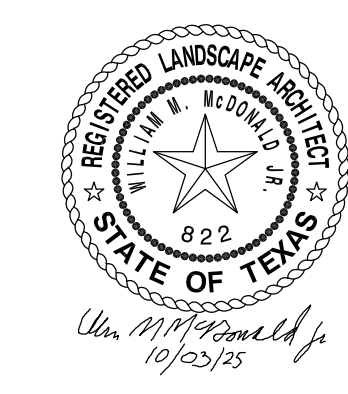
FURNISH AND INSTALL A GREEN FLUSH RESTROOM AND CONCRETE WALKWAY AT GALVESTON ISLAND STATE PARK.



TEXAS PARKS AND WILDLIFE

INFRASTRUCTURE DIVISION

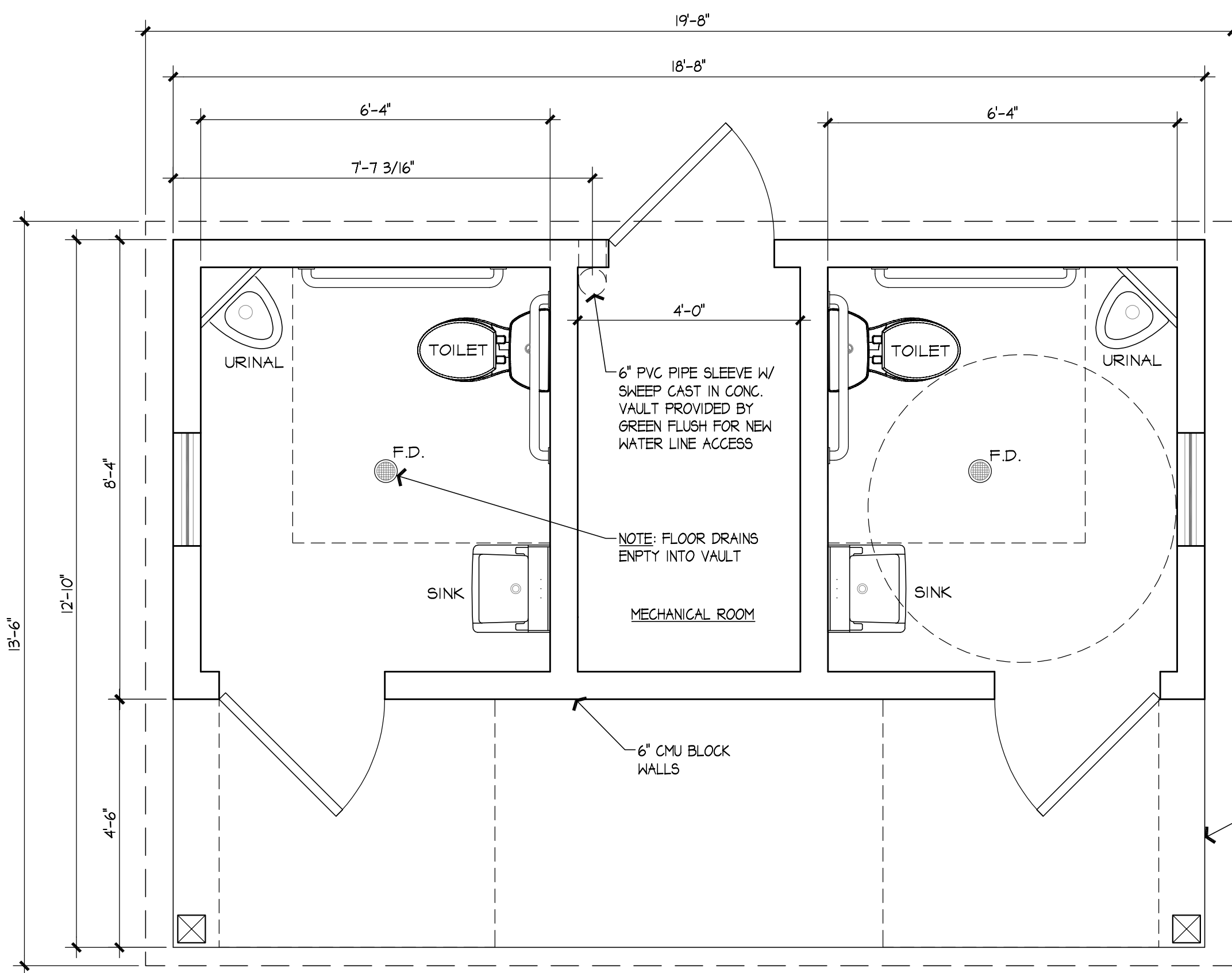
4200 SMITH SCHOOL ROAD · AUSTIN, TEXAS 78744-3292



Released for Solicitation
Infrastructure Division

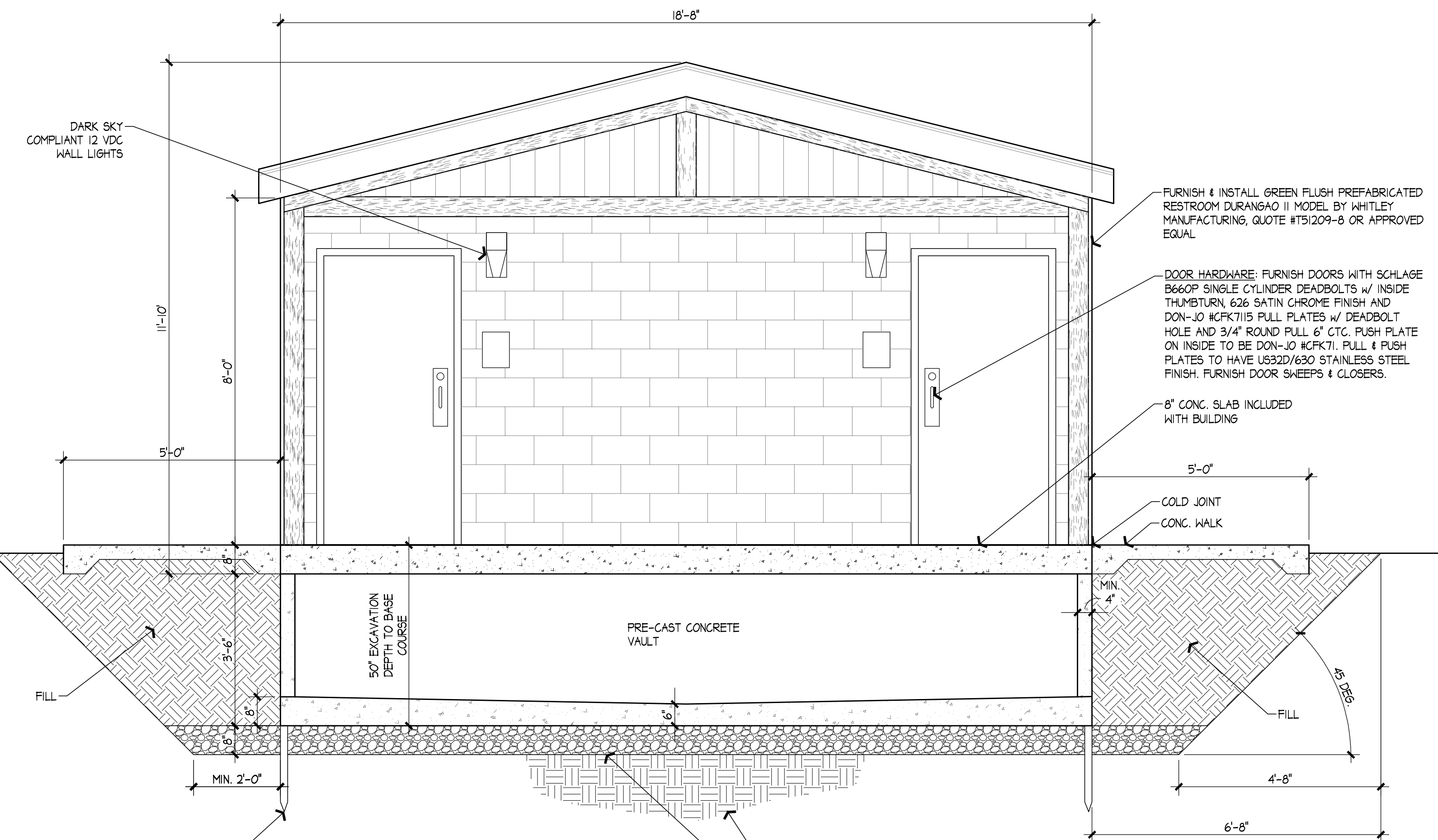
PATH: C:\Users\wmcDonald\OneDrive - TPWD\Documents\Facilities\galvest\p042_MRI12735_Green_Flush_Restroom\acad_MRI12735_L_Sheets.dwg

100% CD



- NOTES:**
- FURNISH & INSTALL GREEN FLUSH PREFABRICATED RESTROOM DURANGAO II MODEL AS SUPPLIED BY GREEN FLUSH RESTROOM 1420 N COLUMBIA RIDGE WAY, WASHOUGAL, WA 98671, QUOTE #751209-8 OR APPROVED EQUAL. CONTACT FACTORS SALES REPRESENTATIVE KYLE EARLYWINE AT PHONE: 360-716-7595, EXT. 4, EMAIL: kyle@greenflushrestrooms.com.
 - REFER TO TECHNICAL SPECIFICATIONS FOR ADDITIONAL PREFABRICATED RESTROOM INFORMATION.
 - PREPARE THE PREFABRICATION RESTROOM BUILDING PAD AND WATER LINE STUB UP FOR RESTROOM ACCORDING TO MANUFACTURER'S WRITTEN INSTRUCTIONS. CONNECT NEW WATER TO MANUFACTURER'S WATERLINE CONDUIT IN THE VAULT.
 - BACK FILL & FINE GRADE SALVAGED TOPSOIL TO LEVEL WITH NEW CONCRETE WALKS AND TO DRAIN AWAY FROM BUILDING.
 - SOLID SOD ALL DISTURBED AREAS WITH TIFWAY 419 BERMLDA GRASS BLOCK SOD. MAINTAIN SOD WITH TEMPORARY ABOVE GROUND IRRIGATION SYSTEM UNTIL ESTABLISHED.
 - FURNISH REQUIRED SUBMITTALS LISTED ON DETAIL 11/2 FOR OWNER'S APPROVAL BEFORE INSTALLATION.

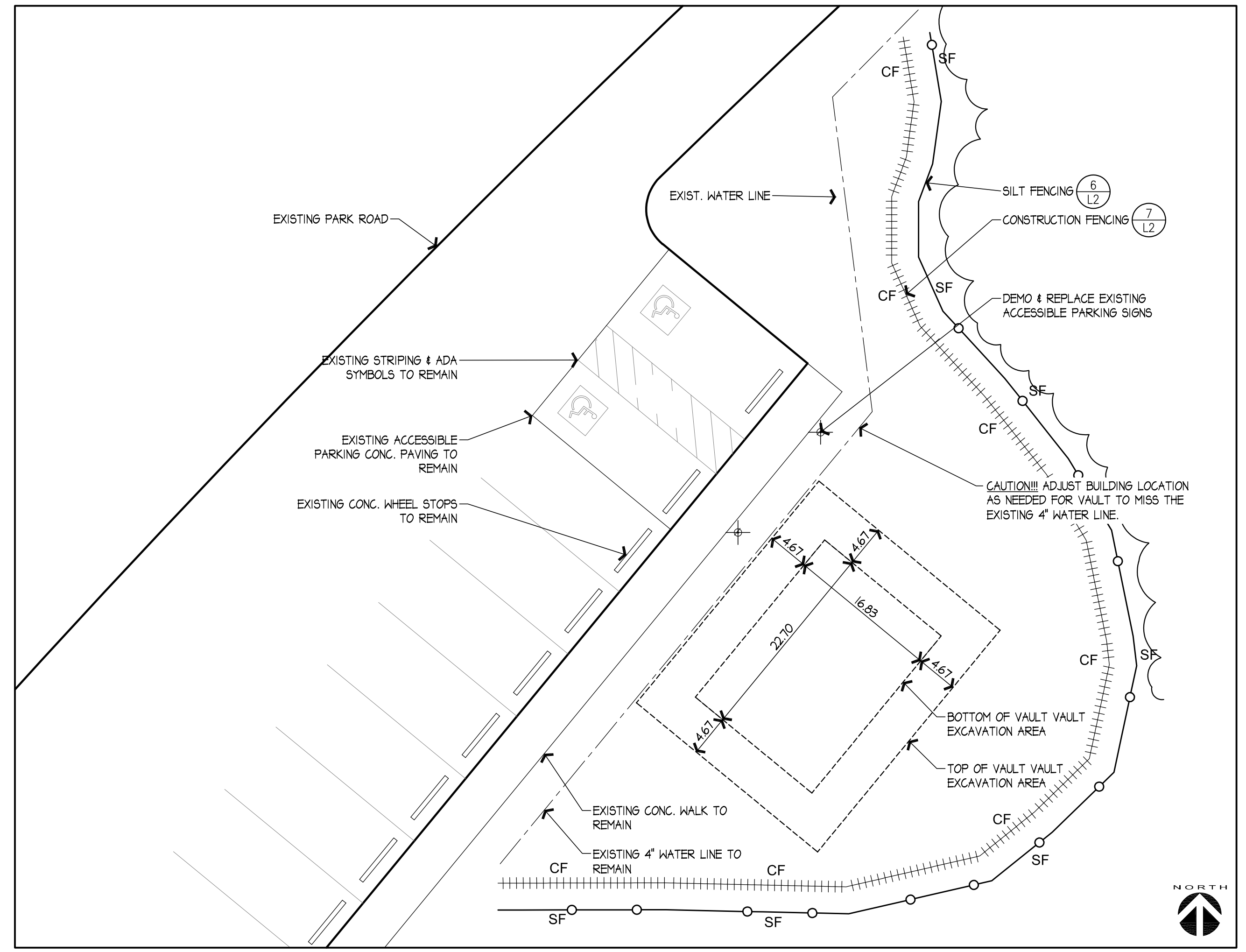
1
L1 FLOOR PLAN - GREEN FLUSH RESTROOM
SCALE 1/2"=1'-0"



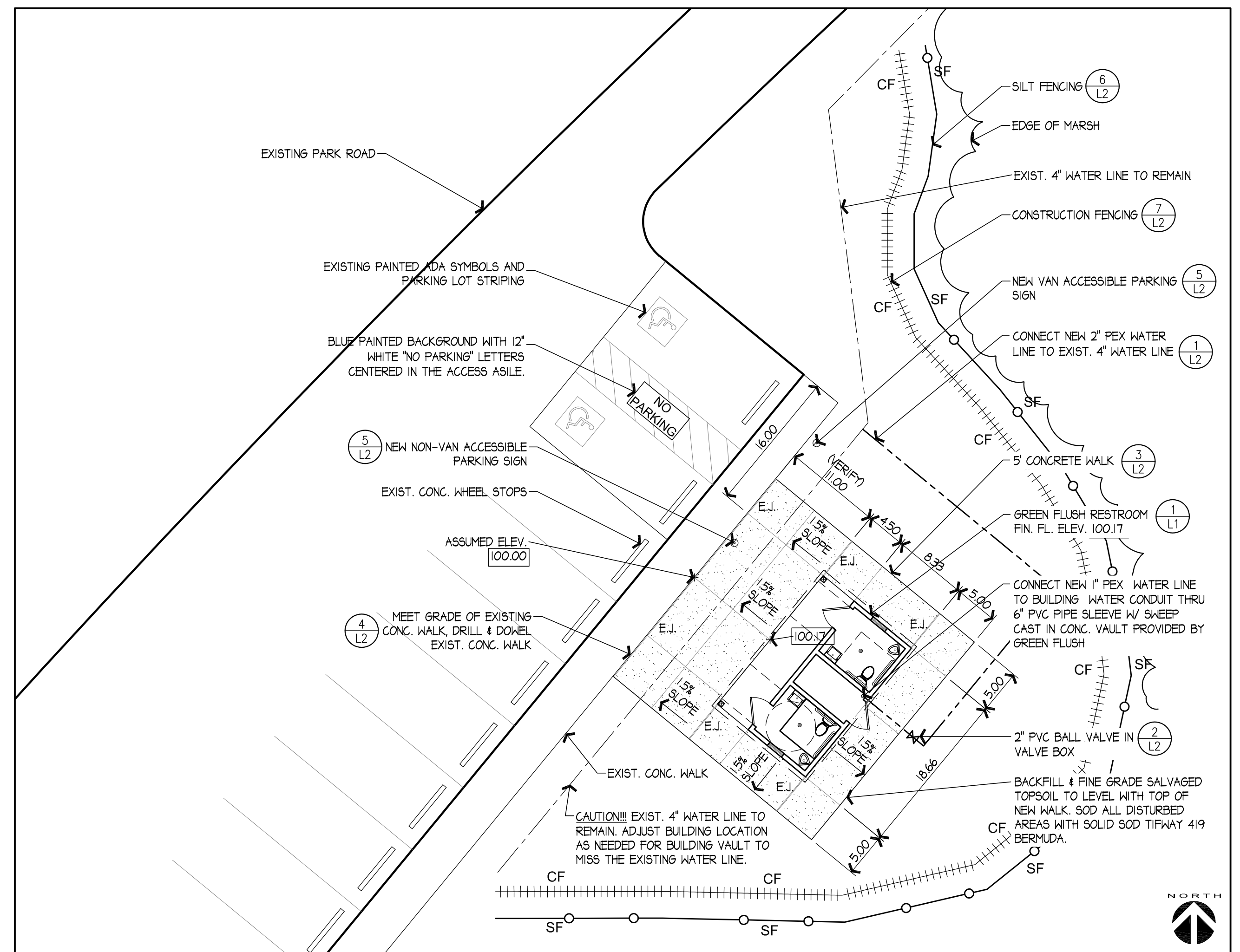
- FURNISH & INSTALL GREEN FLUSH PREFABRICATED RESTROOM DURANGAO II MODEL BY WHITLEY MANUFACTURING, QUOTE #751209-8 OR APPROVED EQUAL.
- DOOR HARDWARE: FURNISH DOORS WITH SCHLAGE B660P SINGLE CYLINDER DEADBOLTS w/ INSIDE THUMBTURN, 626 SATIN CHROME FINISH AND DON-JO #KFT115 PULL PLATES w/ DEADBOLT HOLE AND 3/4" ROUND PULL 6" CTC. PUSH PLATE ON INSIDE TO BE DON-JO #GPK71. PULL & PUSH PLATES TO HAVE US32D/630 STAINLESS STEEL FINISH. FURNISH DOOR SWEEPS & CLOSERS.
- 8" CONC. SLAB INCLUDED WITH BUILDING
- COLD JOINT CONC. WALK
- MIN 4"
- MIN 2'-0"
- 50' EXCAVATION DEPTH TO BASE COURSE
- PRE-CAST CONCRETE VAULT
- COMPACTED SUBGRADE
- 17x23' MIN. FOOTPRINT 8" MIN. LEVELING COURSE 3/4" MINUS COMPACTED TO 92% MLD. LEVEL TO WITHIN 1/8" IN 10', ALL DIRECTIONS (TOP DRESS WITH 1" MIN. SAND FOR EASY LEVELING IF NECESSARY).

- NOTES:**
- WHEN RESTROOM IS SET ON A SLOPING GRADE, THE INDICATED EXCAVATION DEPTH IS A MINIMUM.
 - 3/4" - 1" UNCOMPACTED LEVELED WASHED ROCK MAY BE USED IN LIEU OF COMPACTED BASE COURSE.
 - IF RESTROOM IS SET ON A SLOPING GRADE, CREATING A SWALE MAY BE NECESSARY TO DIRECT RUNOFF AWAY FROM THE BUILDING.
 - UTILITY STUB-UPS INTO MECHANICAL ROOM ARE NOT SHOWN.
 - DE-WATER EXCAVATION AS NEEDED BEFORE SETTING VAULT.

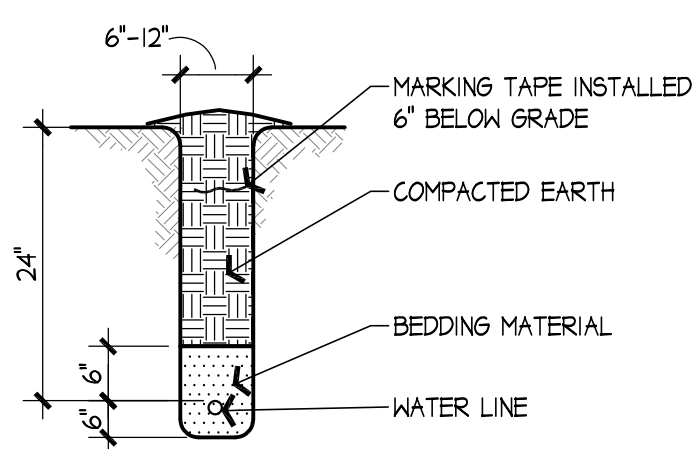
3
L1 FRONT ELEVATION/ SITE PREP DETAIL - GREEN FLUSH RESTROOM
SCALE 1/2"=1'-0"



2
L1 DEMO PLAN - GREEN FLUSH RESTROOM
SCALE 1"=10'-0"



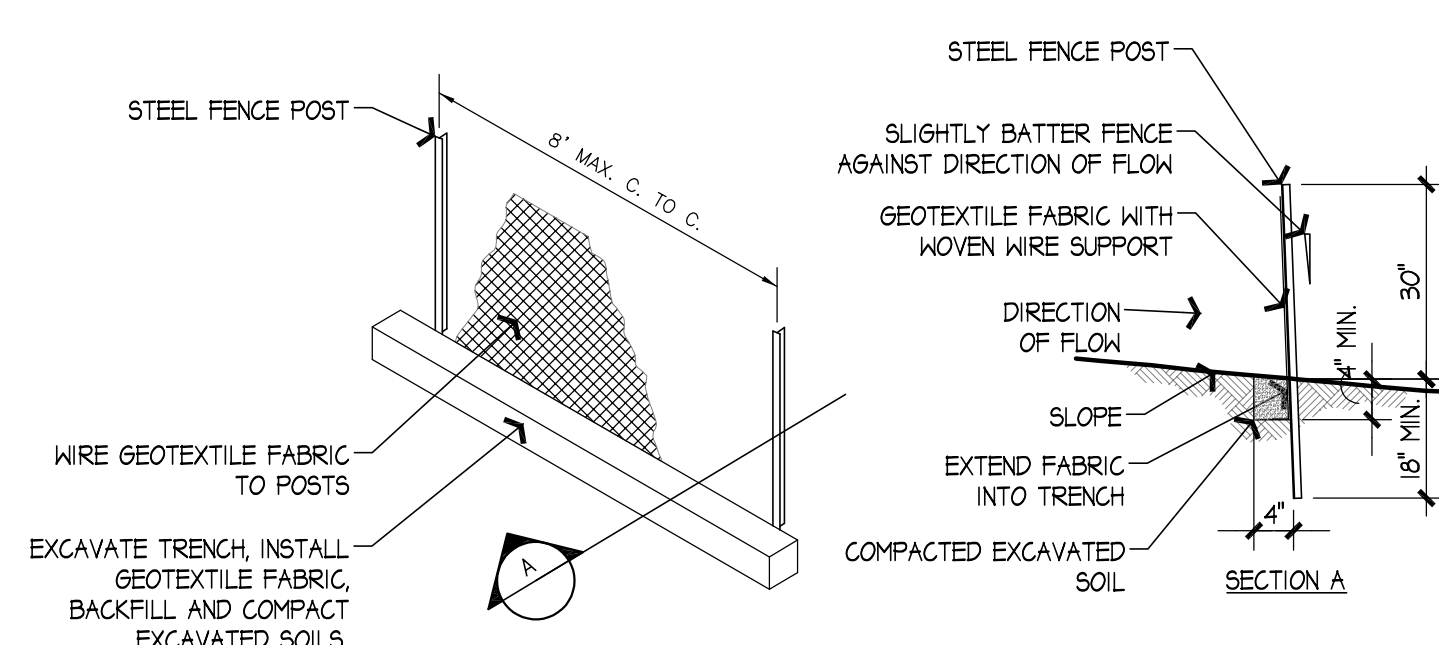
4
L1 SITE PLAN - GREEN FLUSH RESTROOM
SCALE 1"=10'-0"



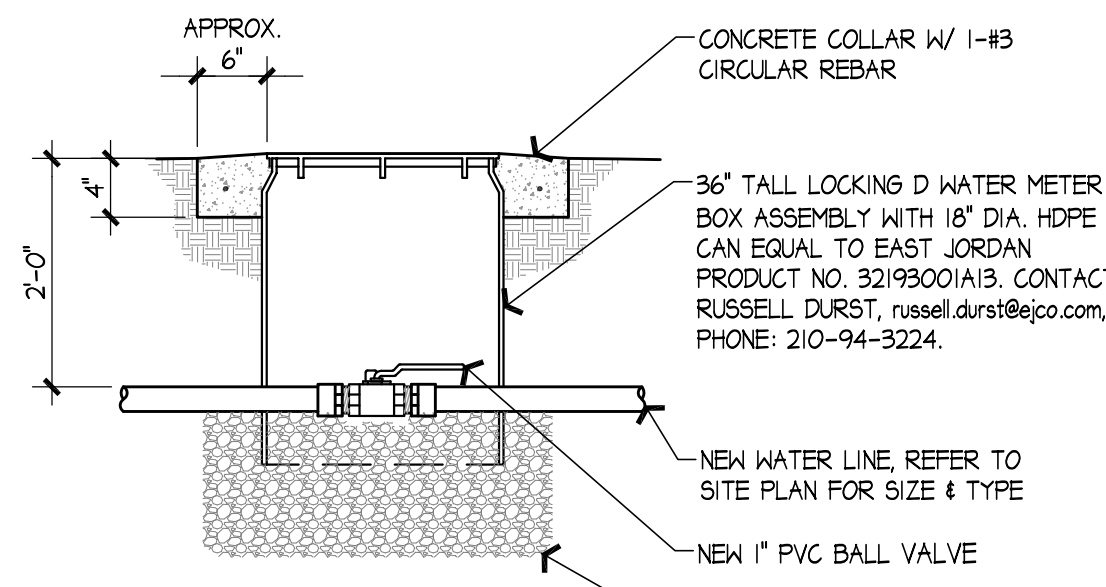
TRENCHING NOTES:

1. THE CONTRACTOR SHALL FURNISH ALL LABOR, MATERIALS TOOLS AND EQUIPMENT NECESSARY TO ACCOMPLISH THE REQUIRED TRENCHING FOR THE PROJECT. THE CONTRACTOR SHALL LOCATE ALL UNDERGROUND UTILITIES PRIOR TO STARTING EXCAVATION. COSTS OF REPAIRING DAMAGE TO EXISTING UNDERGROUND UTILITIES OR FACILITIES SHALL BE BORNE BY THE CONTRACTOR.
2. TRENCHES SHALL BE EXCAVATED TO THE DEPTHS SHOWN ON THESE DETAILS AND LINES PLACED AS SHOWN ON THESE DETAILS. THE WIDTH OF ANY TRENCHES SHALL BE BETWEEN SIX AND TWELVE INCHES.
3. BEDDING MATERIAL SHALL BE BEDDED AROUND ALL WATER LINES. BEDDING MATERIAL SHALL BE SAND OR OTHER SUITABLE BEDDING MATERIAL THAT PASSES A 3/8" SIEVE TEST. THE COMPACTED EARTH FILL MATERIAL SHALL BE FREE OF MUD, CLAY LUMPS, VEGETATION DEBRIS AND ROCKS EXCEEDING 4" IN THEIR GREATEST DIMENSION. THE "FINEST" RESULTING FROM THE USE OF A TRENCHING MACHINE MAY ONLY BE USED AS COMPACTED EARTH BACKFILL UNLESS SPECIFICALLY APPROVED BY THE TPA&D ENGINEER.
4. THE BEDDING MATERIAL SHALL BE WATER-TAMPED AROUND ALL LINES BY FLOODING THE TRENCH WITH WATER AND ALLOWING THE MATERIAL TO SETTLE IN AS THE WATER RECEDES AND IS ABSORBED. AFTER THIS FLOODING THE BEDDING MATERIAL DEPTHS ABOVE AND BELOW THE LINES SHALL STILL ADHERE TO THE DETAIL DIMENSIONS.
5. THE COMPACTED EARTH BACKFILL SHALL BE COMPACTED IN 6" LIFTS. HAND TAMPING SHALL BE DONE WITH A MECHANICAL TAMPER. THE TOP OF THE BACKFILLED TRENCH SHALL BE SLIGHTLY MOUNDED ABOVE THE SURROUNDING GRADE TO ALLOW FOR SETTLEMENT.
6. INSTALL A DETECTABLE WATER LINE MARKING TAPE 6" BELOW GRADE.
7. THE WATER DISTRIBUTION SYSTEM MUST BE CONSTRUCTED IN ACCORDANCE WITH THE CURRENT TEXAS COMMISSION ON ENVIRONMENTAL QUALITY (TECO) RULES AND REGULATIONS FOR PUBLIC WATER SYSTEMS 30 TEXAS ADMINISTRATIVE CODE (TAC) CHAPTER 290 SUBCHAPTER D. WHEN CONFLICTS ARE NOTED WITH LOCAL STANDARDS, THE MORE STRINGENT REQUIREMENT SHALL BE APPLIED.
8. ALL NEWLY INSTALLED PIPES AND RELATED PRODUCTS MUST CONFORM TO AMERICAN NATIONAL STANDARDS INSTITUTE (ANSI)/NF INTERNATIONAL STANDARD 61 AND MUST BE CERTIFIED BY AN ORGANIZATION ACCREDITED BY ANSI.
9. PLASTIC PIPE FOR PUBLIC WATER SYSTEMS MUST BEAR THE NSF INTERNATIONAL SEAL OF APPROVAL (NSF-IP) AND HAVE AN ASTM DESIGN PRESSURE RATING OF AT LEAST 150 PSI OR A STANDARD DIMENSION RATION OF 26 OR LESS.
10. TOP OF WATER LINE MUST BE LOCATED A MINIMUM OF 24" BELOW THE GROUND SURFACE.

1 L2 TRENCHING DETAILS AND NOTES
SCALE: NTS



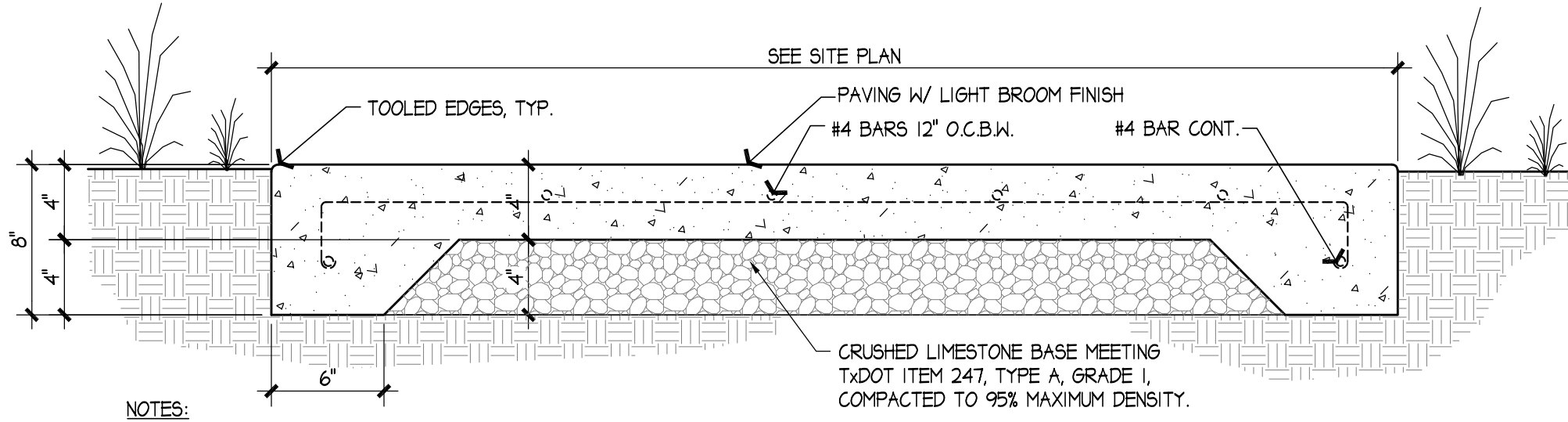
6 L2 SILT FENCING
SCALE: NOT TO SCALE



NOTES FOR CUTOFF VALVES:

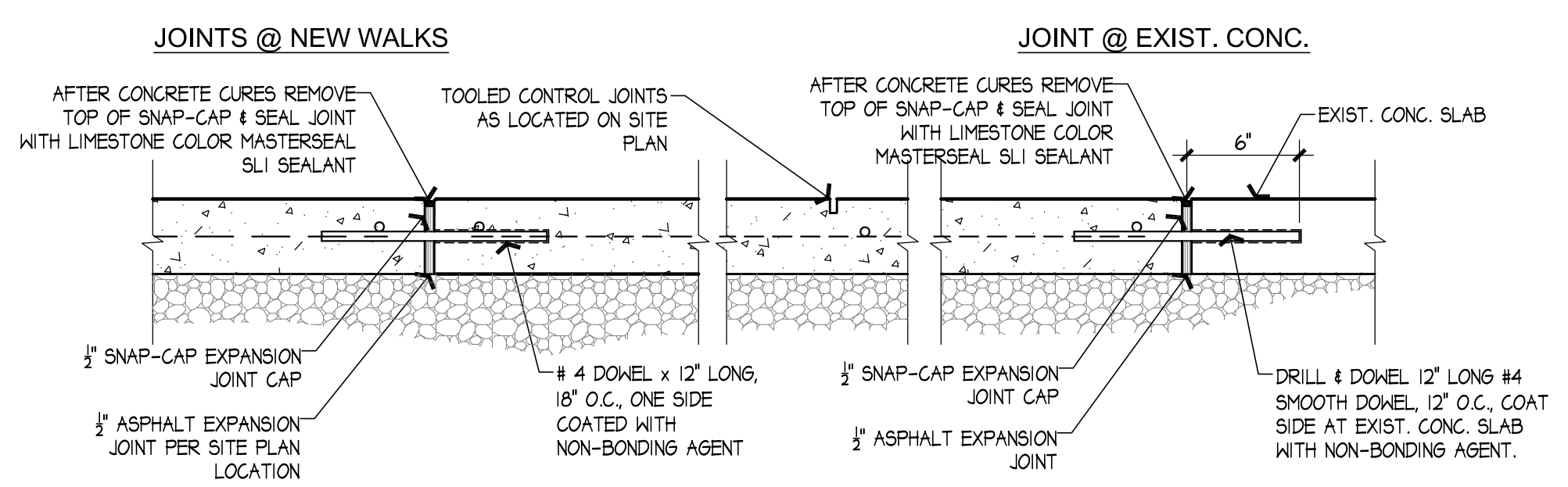
1. ON VALVE BOXES, USE BRICKS TO SUPPORT VALVE BOXES ABOVE WATER LINES. DO NOT LET VALVE BOXES OR SUPPORT BRICKS REST ON WATER LINES.
2. CONCRETE FOR CONCRETE COLLAR SHALL HAVE A MINIMUM 3000 PSI STRENGTH.
3. SLOPE THE NEW WATER LINE UP NEAR THE CUTOFF VALVE BOX SO THAT THE WATER VALVE IS APPROXIMATELY 18" BELOW THE TOP OF THE VALVE BOX.
4. ORIENT THE VALVE IN THE VALVE BOX SO THAT THE BALL VALVE HANDLE CAN BE EASILY OPERATED WITHOUT INTERFERENCE WITH THE SIDES OF THE VALVE BOX.

2 L2 VALVE AND VALVE BOX DETAIL
SCALE: 3/4"=1'-0"

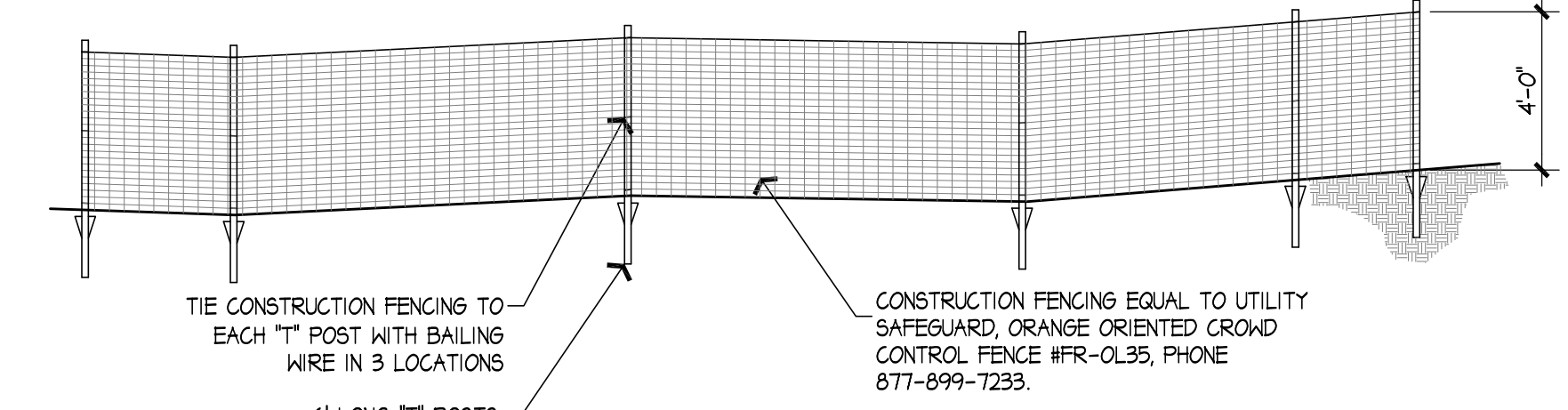


- NOTES:**
1. LOCATE EXPANSION JOINTS AND CONTROL JOINTS AS INDICATED BY SITE PLAN.
 2. CONCRETE TO HAVE A 28 DAY 4000 P.S.I. COMPRESSIVE STRENGTH, SLUMP LIMIT OF 4" PLUS OR MINUS 1", AND MAXIMUM RATIO OF WATER-CEMENTITIOUS MATERIAL OF 0.45 AT POINT OF PLACEMENT.
 3. PROVIDE CHAIRS TO HOLD REINFORCING IN POSITION DURING CONCRETE POUR.
 4. AFTER FORM REMOVAL, BACKFILL TOPSOIL AGAINST SIDES OF PAVEMENT TO TOP OF PAVEMENT.

3 L2 CONCRETE WALK
SCALE: 1 1/2"=1'-0"

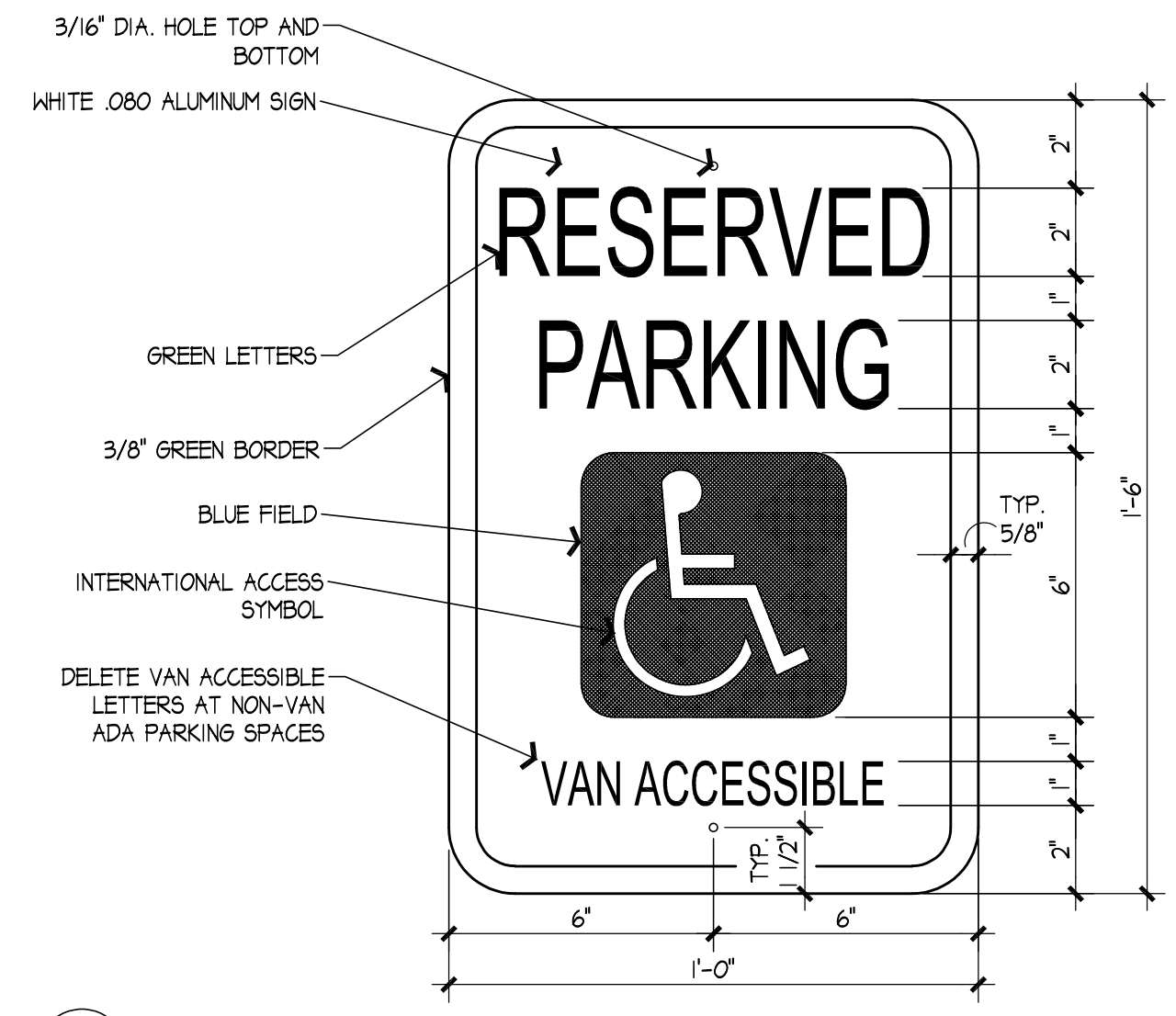


4 L2 EXPANSION JOINT
SCALE: 1 1/2"=1'-0"

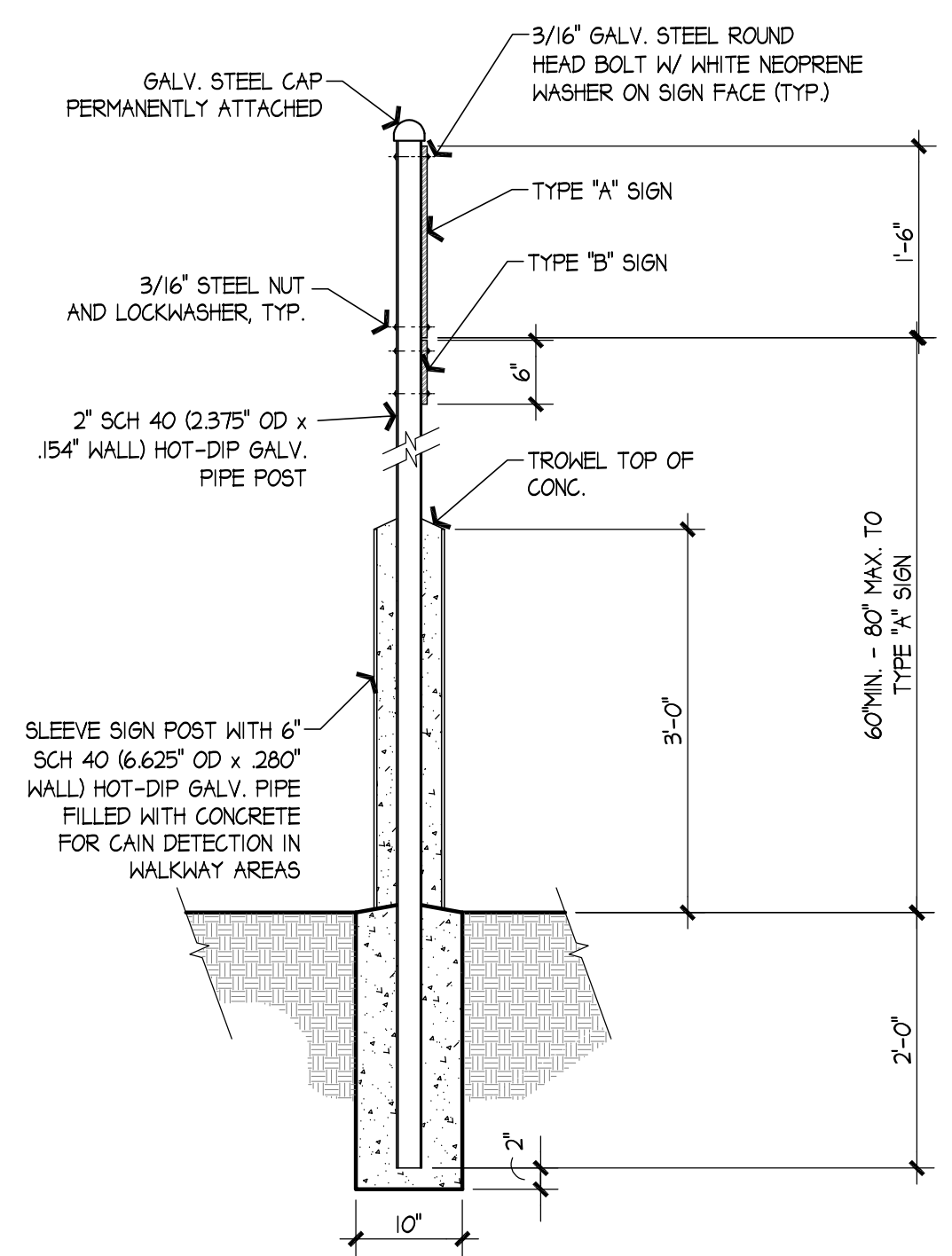


7 L2 CONSTRUCTION FENCING
SCALE: NOT TO SCALE

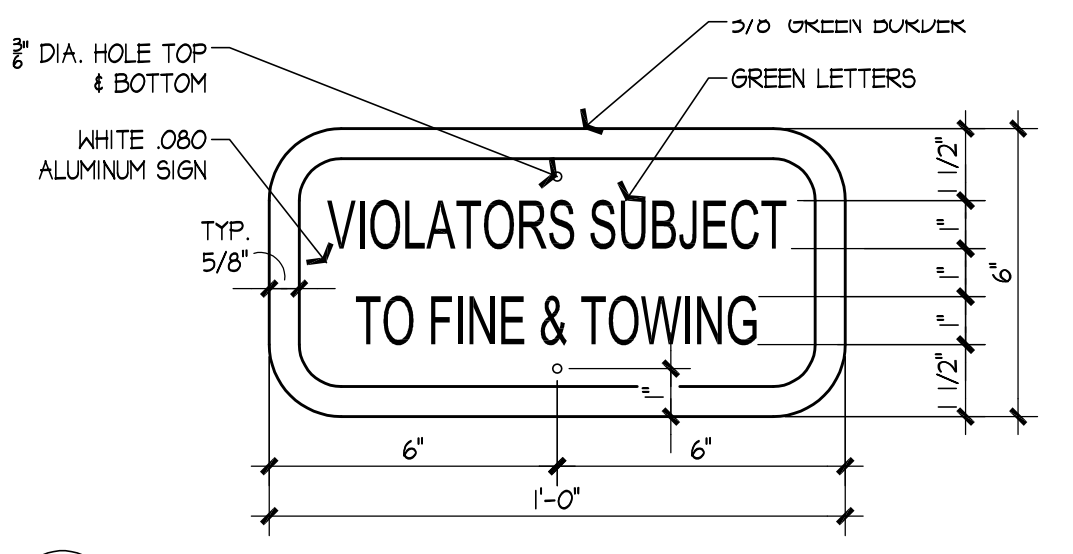
- NOTES:**
1. INSTALL CONSTRUCTION FENCING BEFORE START OF CONSTRUCTION AND MAINTAIN FENCING THROUGHOUT THE CONSTRUCTION PERIOD TO PROTECT MARSH.
 2. VEHICLES AND EQUIPMENT SHALL NOT ENTER AREA OUTSIDE CONSTRUCTION FENCING.



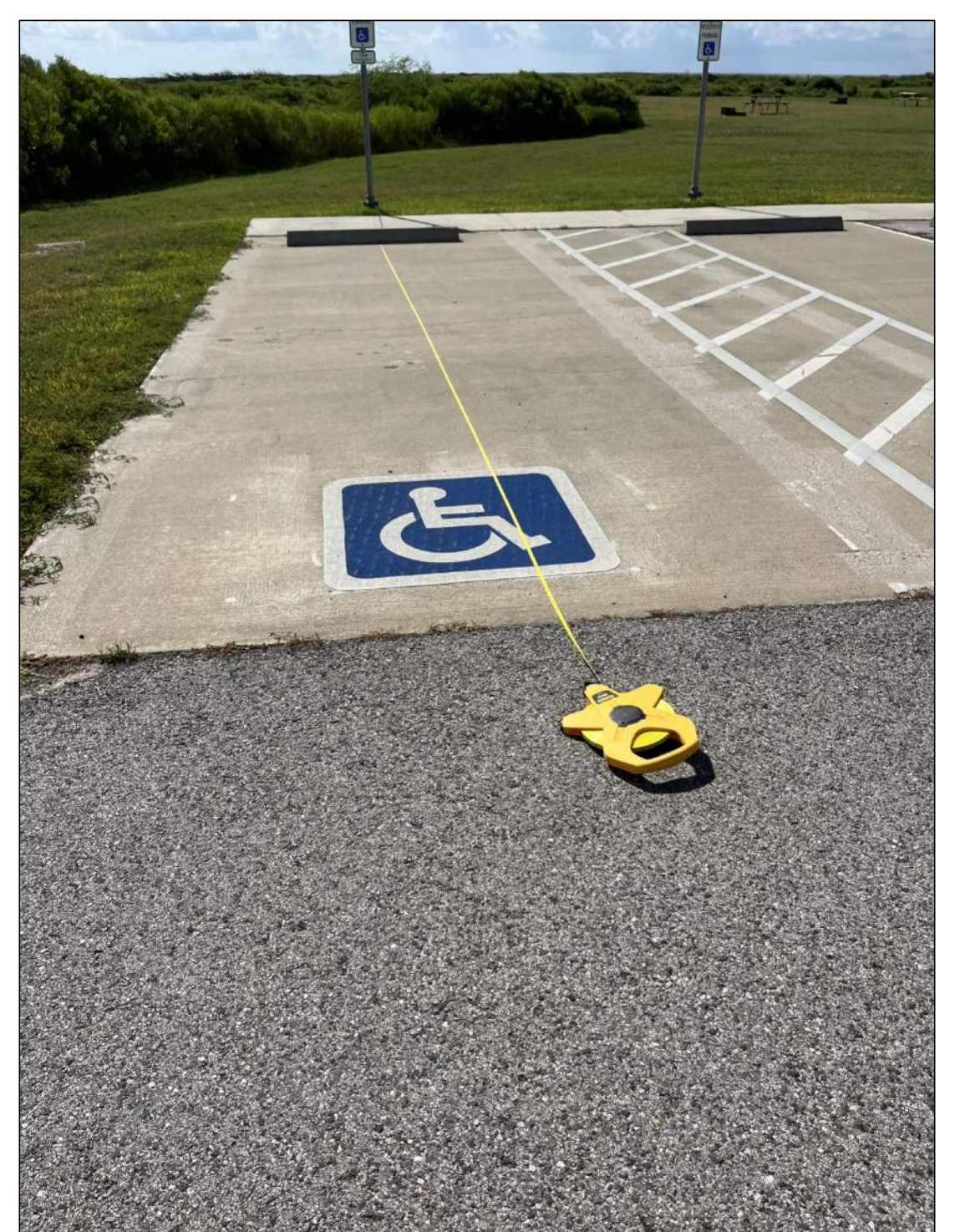
8 L2 TYPE "A" SIGN
SCALE: 3/4"=1'-0"



5 L2 ACCESSIBLE PARKING SIGNS ON POST
SCALE: 3/4"=1'-0"



9 L2 TYPE "B" SIGN
SCALE: 3/4"=1'-0"



10 L2 PHOTOS OF PROJECT SITE
SCALE

REQUIRED MATERIAL SUBMITTALS PRIOR TO INSTALLATION				
SUBMITTAL TITLE	SUBMITTAL NUMBER	CS SPECIFICATION SECTION NUMBER	SUBMITTAL SECTION DESCRIPTION	SUBMITTAL DESCRIPTION
GREEN FLUSH RESTROOM	1	13 34 00	PREFABRICATED ENGINEERED STRUCTURES	SEALED ENGINEER DRAWINGS
PLUMBING FIXTURES	2	22 42 00	COMMERCIAL PLUMBING FIXTURES	PRODUCT DATA
SOLAR SYSTEM	3	26 31 00	PHOTOVOLTAIC COLLECTORS	PRODUCT DATA
ROOFING	4	07 41 13	FORMED METAL ROOF PANELS	PRODUCT DATA
LIGHT FIXTURES	5	26 50 00	LIGHTING	PRODUCT DATA
DOOR PUSH & PULL PLATES	6	08 11 13	HOLLOW METAL DOORS	PRODUCT DATA
DOOR LOCKS	7	08 11 13	HOLLOW METAL DOORS	PRODUCT DATA
HOT WATER HEATER	8	22 33 00	ELECTRIC WATER HEATERS	PRODUCT DATA
PEX WATER PIPE	9	22 00 00	PLUMBING	PRODUCT DATA
BALL VALVE & BOX	10	22 00 00	PLUMBING	PRODUCT DATA
CONCRETE DESIGN MIX	11	32 13 13	CONCRETE PAVING	DESIGN MIX
CEMENTITIOUS MATERIALS & ADMIX	12	32 13 13	CONCRETE PAVING	PRODUCT DATA
EXPANSION JOINT MATERIALS	13	32 13 13	CONCRETE PAVING	PRODUCT DATA
PAVEMENT MARKING PAINT	14	32 17 23	PAVEMENT MARKINGS	PRODUCT DATA

11 L4 LIST OF SUBMITTALS
SCALE