

PROJECT BRAZOS BEND STATE PARK ROOF REPLACEMENT

PROJECT NO: MR10355

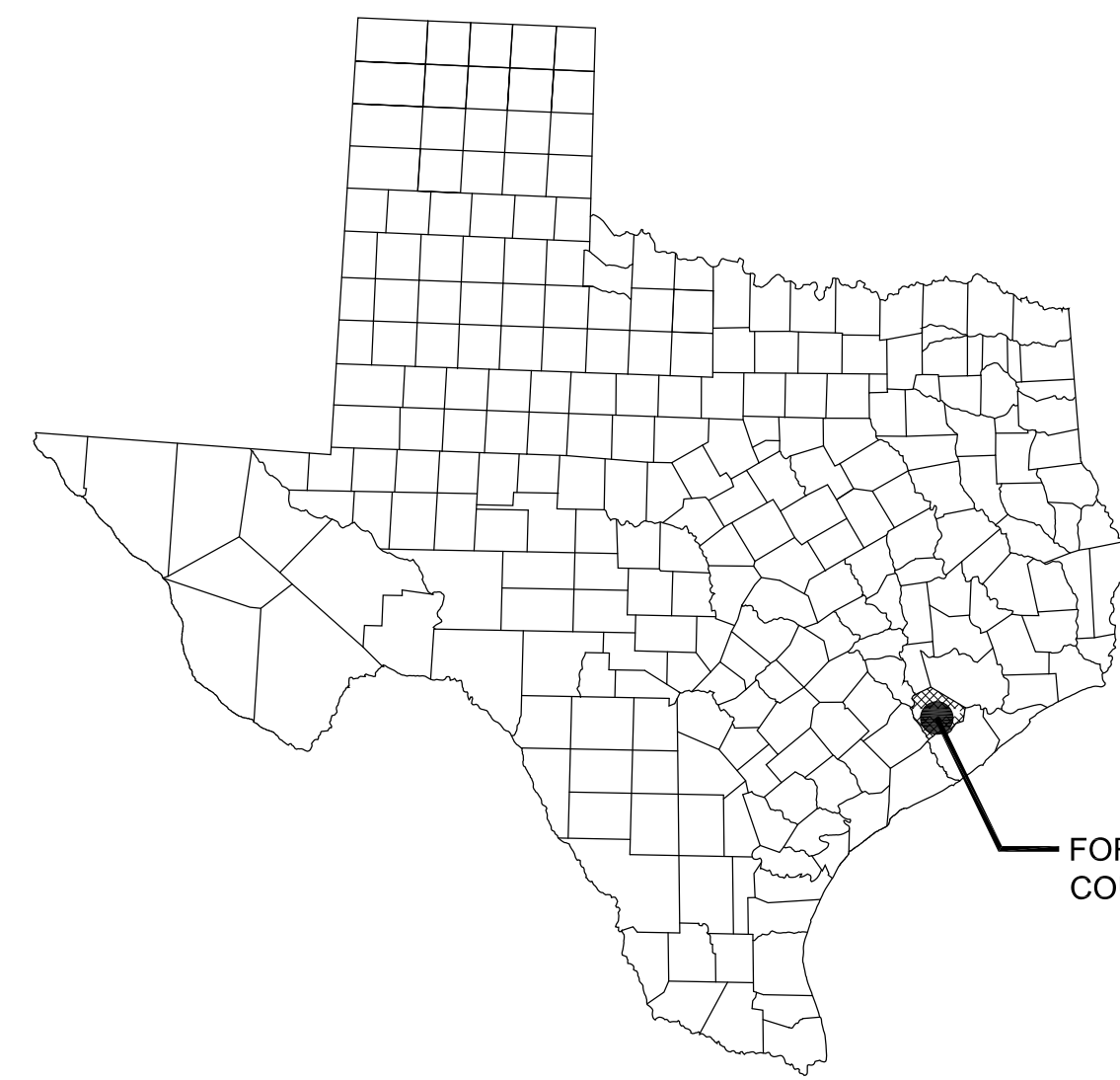
DATE: DEC. 10, 2019

INDEX OF DRAWINGS

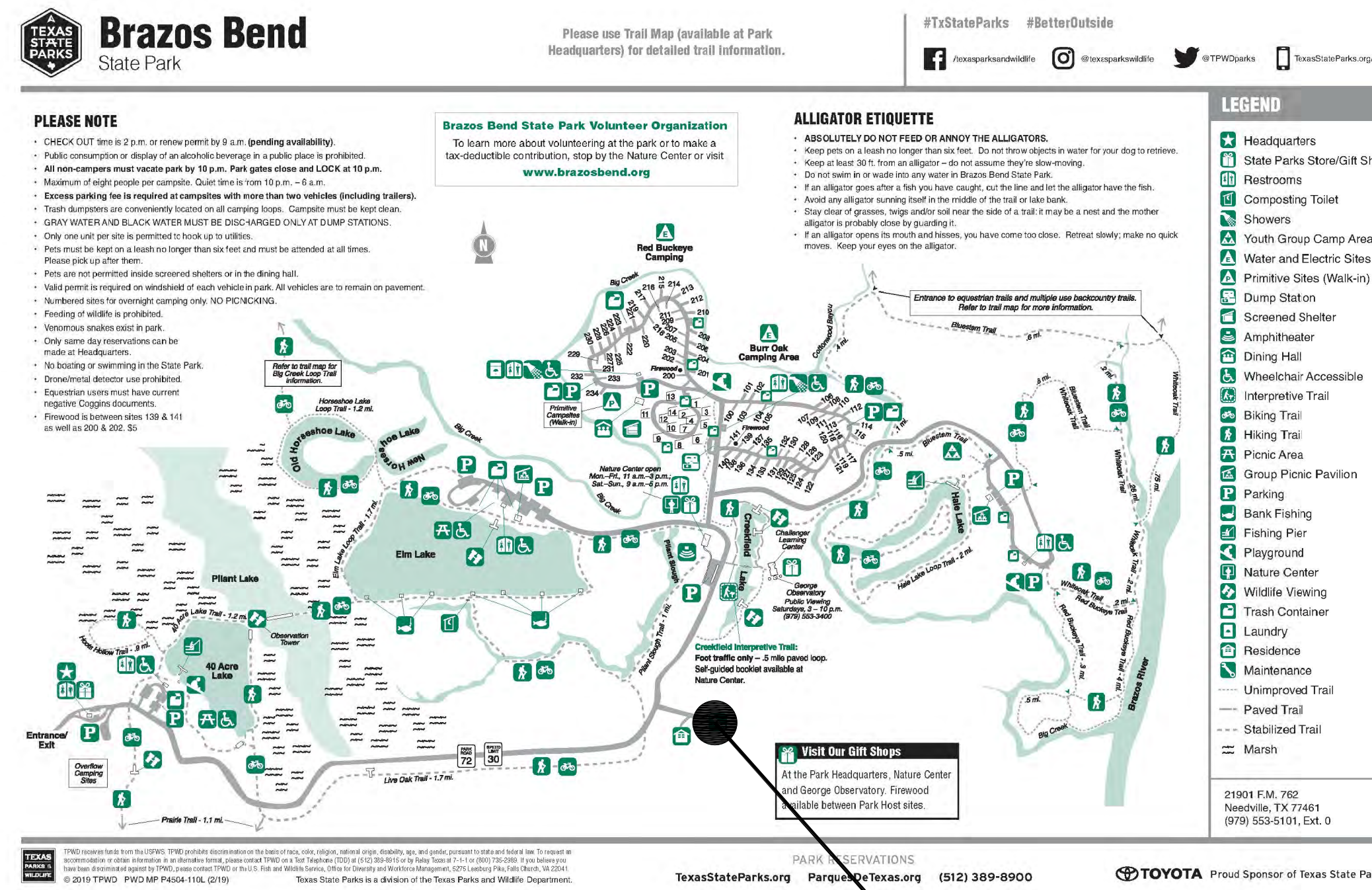
SHEET NO.	DESCRIPTION
-	COVER SHEET
A0	ABBREVIATIONS, NOTES AND SUBMITTALS
A1	ROOF AND CEILING PLAN & PHOTOS
A2	EXTERIOR ELEVATIONS
A3	DETAILS

BUILDING CODE SUMMARY

- A. INTERNATIONAL CODE COUNCIL ADOPTIONS***
1. BUILDING CODE INTERNATIONAL BUILDING CODE 2015
 2. STRUCTURAL CODE INTERNATIONAL BUILDING CODE 2015
 3. PLUMBING CODE INTERNATIONAL PLUMBING CODE 2015
 4. MECHANICAL CODE INTERNATIONAL MECHANICAL CODE 2015
 5. GAS CODE INTERNATIONAL FUEL GAS CODE 2015
 6. RESIDENTIAL CODE INTERNATIONAL RESIDENTIAL CODE 2015
 7. EXISTING BUILDINGS INTERNATIONAL EXISTING BUILDINGS CODE 2015
- * International Fire Code omitted in lieu of TPWD's implementation of National Fire Protection Association codes. International Energy Conservation Code 2015 omitted in lieu of Energy Standard for Buildings, ASHRAE/IESNA Standard 90.1 (2013).
- B. NATIONAL FIRE PROTECTION ASSOCIATION**
1. ELECTRIC CODE NATIONAL ELECTRICAL CODE NFPA-70 2017
 2. FIRE CODE NFPA - 1 2015
 3. LIFE SAFETY CODE NFPA - 101 2015
- C. STATE ENERGY CONSERVATION OFFICE (SECO)/TEXAS COMPTROLLERS OFFICE**
1. ENERGY CODES FOR STATE BUILDINGS - See Energy Conservation Design Standards: Texas Administrative Code, Title 34, Part 1, Ch. 19, Subchapter C
 - a. COMPLIANCE WITH THE ENERGY CONSERVATION DESIGN STANDARD OF THE AMERICAN SOCIETY OF HEATING, REFRIGERATION AND AIR CONDITIONING ENGINEERS (ASHRAE) / ILLUMINATING ENGINEERING SOCIETY OF NORTH AMERICA (IESNA), ENERGY STANDARD FOR BUILDINGS, ASHRAE/IESNA STANDARD 90.1 (2013)
 - See SECO website for State Funded Buildings, New Construction and Major Renovation Requirements and SECO Compliance Certification Forms
 2. WATER CONSERVATION STANDARDS FOR STATE BUILDINGS - Energy Conservation Design Standards: Texas Administrative Code, Title 34, Part 1, Ch. 19, Subchapter C
 - a. COMPLIANCE WITH THE WATER CONSERVATION DESIGN STANDARDS FOR STATE BUILDINGS AND INSTITUTIONS OF HIGHER EDUCATION FACILITIES, STATE ENERGY CONSERVATION OFFICE (SECO), 2016
 - See SECO website for Texas Water Conservation Design Standards, Requirements and SECO Compliance Certification / Reporting Form
- D. ACCESSIBILITY CODES**
1. US DEPT. OF JUSTICE, 2010 ADA STANDARDS FOR ACCESSIBLE DESIGN
 2. ARCHITECTURAL BARRIERS ACT ACCESSIBILITY GUIDELINES, OUTDOOR DEVELOPED AREAS, NOVEMBER 25, 2013
 3. 2012 TEXAS ACCESSIBILITY STANDARDS, ELIMINATION OF ARCHITECTURAL BARRIERS, TEXAS GOVERNMENT CODE, CHAPTER 469
- E. PLAYGROUND SAFETY CODE**
1. ASTM F1487-17, STANDARD CONSUMER SAFETY PERFORMANCE SPECIFICATIONS FOR PLAYGROUND EQUIPMENT FOR PUBLIC USE
 2. ASTM F2223-15, STANDARD GUIDE FOR ASTM STANDARDS ON PLAYGROUND SURFACING

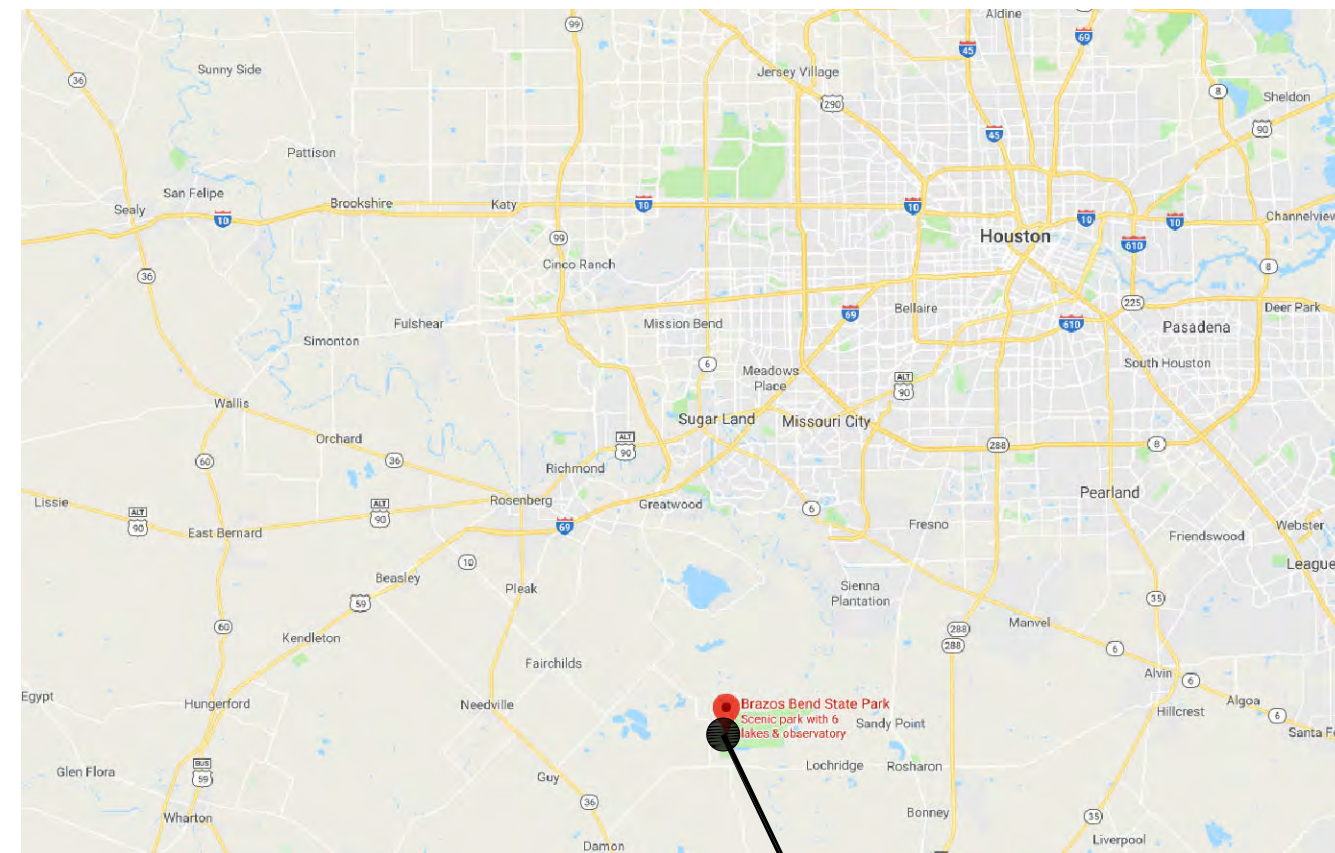
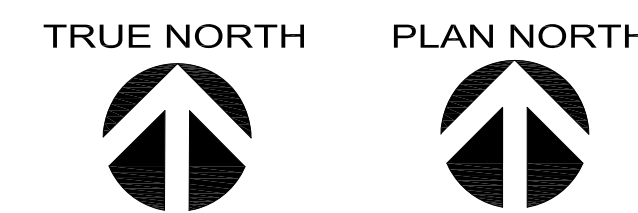


COUNTY LOCATION MAP
NOT TO SCALE



PROJECT
SITE

SITE LOCATION MAP
NOT TO SCALE



PROJECT
SITE

VICINITY MAP
NOT TO SCALE



TPWD TEAM

PROJECT MANAGER

Tony Bettis
Texas Parks & Wildlife
512-389-8382
512-389-4790 (fax)
tony.bettis@tpwd.texas.gov

DESIGN MANAGER

Quana Childs
Texas Parks & Wildlife
512-389-8710
512-389-4790 (fax)
quana.childs@tpwd.texas.gov

INSPECTOR

Keith Moore
Texas Parks & Wildlife
512-627-4373
keith.moore@tpwd.texas.gov

PARK SUPERINTENDENT

Chris Bishop
Texas Parks & Wildlife
979-553-5102
crisopher.bishop@tpwd.texas.gov

CONTRACT MANAGER

JoAnn Hernandez
Texas Parks & Wildlife
512-389-4347
512-389-4790 (fax)
joann.hernandez@tpwd.texas.gov

CONSTRUCTION MANAGER

Gary Holmes
Texas Parks & Wildlife
512-627-4296
gary.holmes@tpwd.texas.gov

DESIGN TEAM

ARCHITECT

Jason Beal
PDG Architects
713-629-6100
713-629-6123 (fax)
jbeal@pdgarchitects.com

RELEASED FOR SOLICITATION

PROJECT MANAGER, INFRASTRUCTURE DIVISION _____ DATE _____

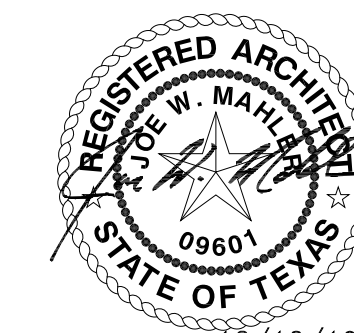
DESIGN BRANCH MANAGER, INFRASTRUCTURE DIVISION _____ DATE _____



TEXAS PARKS AND WILDLIFE

INFRASTRUCTURE DIVISION

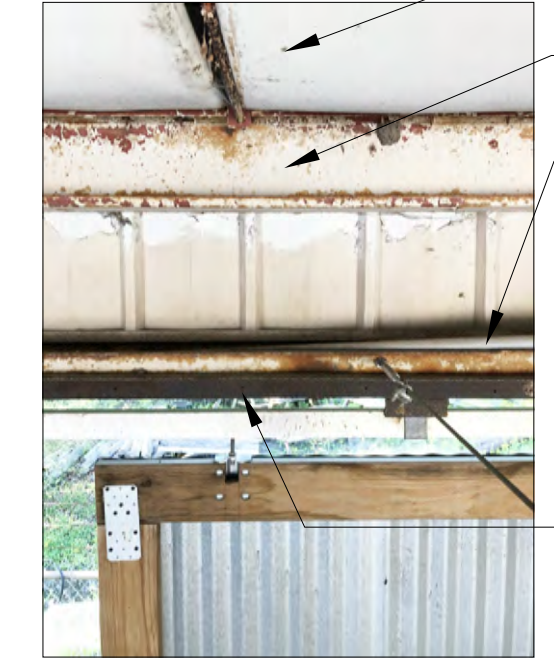
4200 SMITH SCHOOL ROAD · AUSTIN, TEXAS 78744-3292



12/10/19

PERCENTAGE: 100% CONSTRUCTION DOCUMENTS

SEE CLEARER PHOTOS
IN BID DOCUMENTS



REMOVE AND REPLACE INSULATION. REF. SPECIFICATIONS. TYP.
REMOVE AND REPLACE EAVE STRUT. REF. SPECIFICATIONS. TYP.
EXISTING CONDUIT RUNNING INSIDE CHANNEL REMOVE TO FACILITATE CLEANING OF STEEL MEMBERS AND REINSTALL.
CLEAN AND REPAINT EXISTING CHANNEL AT SOFFIT. REFER TO SPECIFICATIONS

K VIEW AT SOFFIT CHANNEL



REMOVE EXISTING RAKE TRIM AND PROVIDE NEW
REMOVE EXISTING ROOFING PANELS AND PROVIDE NEW

J ROOF RAKE EDGE



EXISTING VENT THRU ROOF. EXTEND VENT TO ACHIEVE 10" CLEARANCE FROM BOTTOM OF METAL PANEL PAN AND PROVIDE NEW SLEEVE FLASHING. TYP. REF. 04/A3.

H ROOF VIEW AT VENT THRU ROOF



REMOVE EXISTING RIDGE VENT

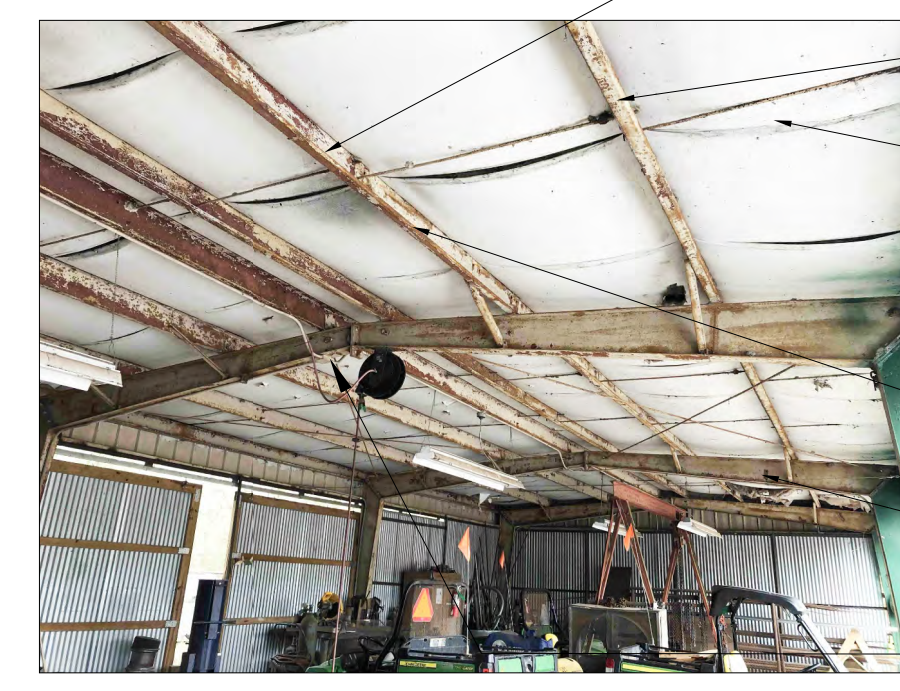
G ROOF VIEW AT RIDGE VENT



INSTALL NEW 6" GUTTER AND 4"x4" DOWNSPOUT. (TYP. 12).

REMOVE AND DISCARD EXISTING ROOF METAL PANELS. INSTALL NEW PANELS PER SPECIFICATIONS. TYP.

F ROOF VIEW LOOKING EAST



REMOVE AND REPLACE EXISTING PURLINS. REF. SPECIFICATIONS. TYP.

PROVIDE AN R-5 THERMAL SPACER AT TOP OF EACH PURLIN. TYP.
INSTALL NEW R-19 BATT INSULATION BETWEEN PURLINS+R-11 BATT INSULATION DRAPED OVER PURLINS. PROVIDE A LINER SYSTEM TO COVER BOTTOM OF PURLINS. TYP.

E VIEW OF PURLINS

REMOVE AND REPLACE EXISTING PURLINS. REFER TO SPECIFICATIONS. TYP.

CLEAN AND PAINT ALL EXISTING RIGID FRAMES. REFER TO SPECIFICATIONS

REMOVE AND REINSTALL OR PROVIDE TEMPORARY SUPPORT AT EXISTING CONDUITS AND EQUIPMENT WHILE RIGID FRAME IS BEING CLEANED. TYP.



EXISTING SHED ROOF TO REMAIN

D EAST VIEW OF MAINTENANCE SHOP



REMOVE AND REPLACE BENT HEADER CHANNEL

C NORTH VIEW OF MAINTENANCE SHOP

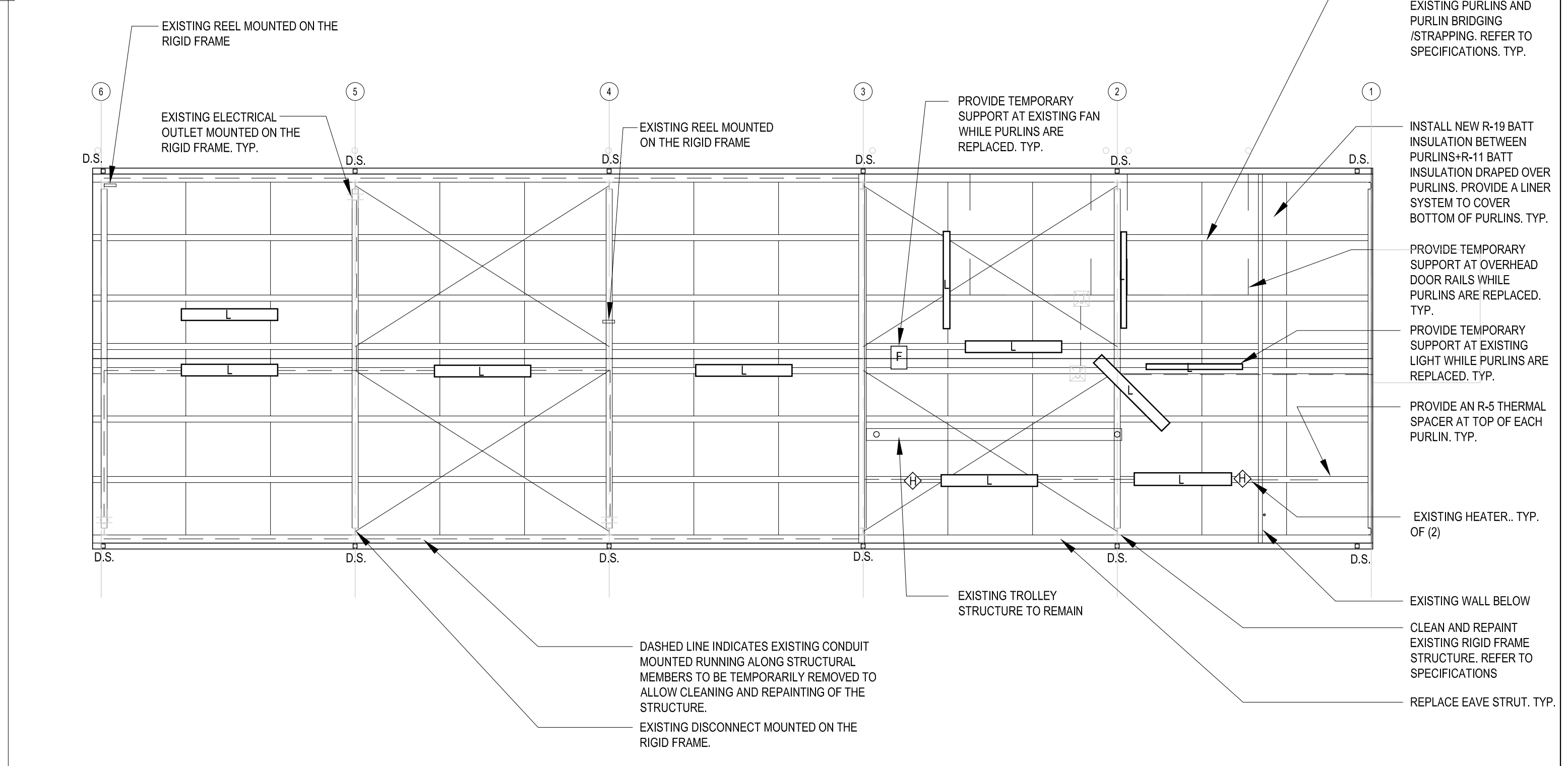


DO NOT DAMAGE WALL MOUNTED FIXTURES DURING CONSTRUCTION ACTIVITIES.

B NORTHWEST VIEW OF MAINTENANCE SHOP



A SOUTHWEST VIEW OF MAINTENANCE SHOP

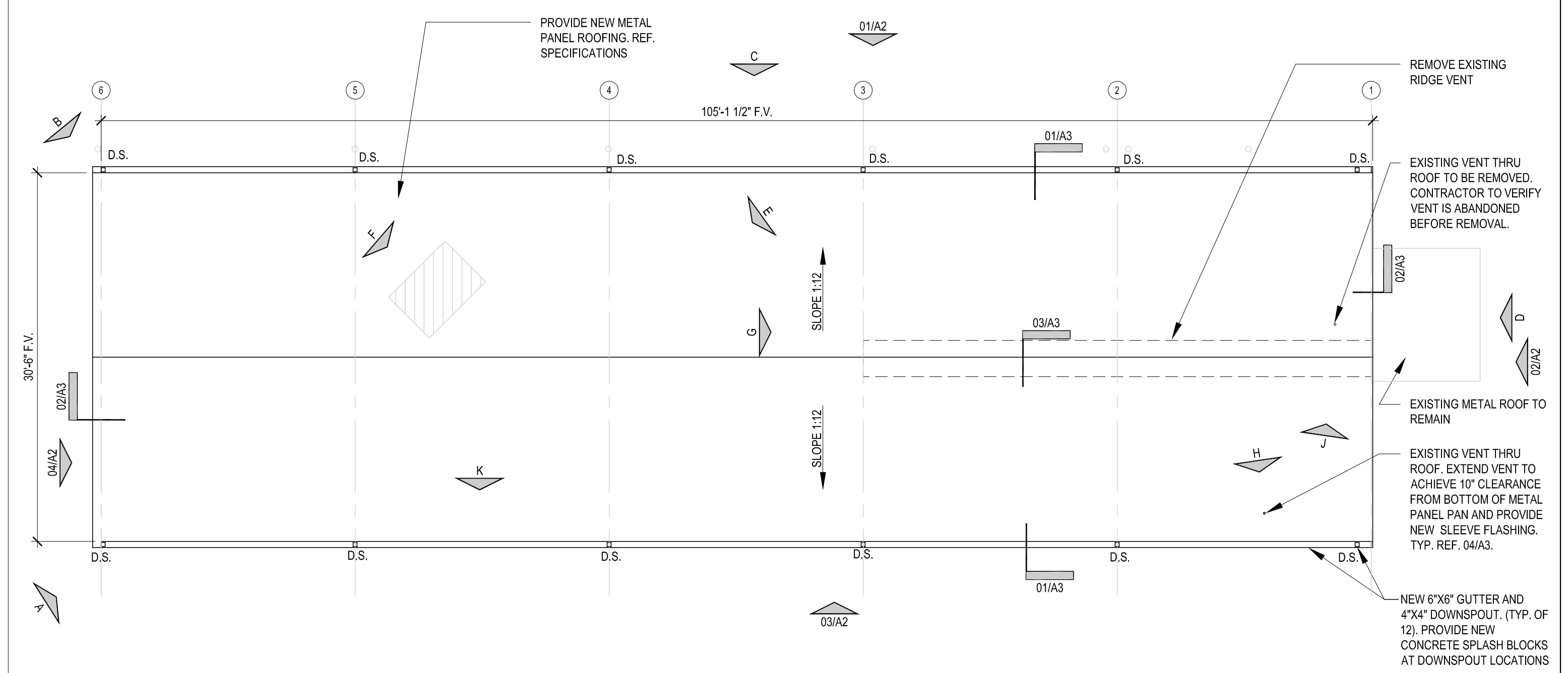


NOTES:

1. CONTRACTOR TO REMOVE AND REPLACE SELECT STRUCTURAL MEMBERS AS INDICATED.
2. CONTRACTOR TO CLEAN ENTIRE EXISTING RIGID FRAME STRUCTURE. REFER TO SPECIFICATIONS.
3. CONTRACTOR TO REPLACE ALL DAMAGED AND RUSTED BOLTS PRIOR TO RE-COATING THE STRUCTURE.
4. CONTRACTOR TO PAINT THE STRUCTURE PER SPECIFICATIONS.
5. CONTRACTOR IS RESPONSIBLE FOR THE TEMPORARY SUPPORT OF ALL EQUIPMENT AND FIXTURES MOUNTED ON THE STEEL STRUCTURE DURING DEMOLITION, STRUCTURAL REPAIR, CLEANING AND PAINTING ACTIVITIES.

SCALE: 8'-0"
1/8" = 1'-0"

MAINTENANCE BLDG.
REFLECTED CEILING PLAN 03



NOTES:

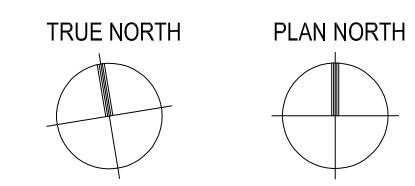
1. CONTRACTOR TO REMOVE EXISTING ROOFING AND PROVIDE NEW ROOF PER N.R.C.A. DETAILS AND SPECIFICATIONS.
2. CONTRACTOR TO REMOVE EXISTING RIDGE VENT AND DISCARD.
3. CONTRACTOR TO REMOVE EXISTING VINYL FACED BATT INSULATION AND REPLACE WITH SPECIFIED INSULATION.

SCALE: 8'-0"
1/8" = 1'-0"

MAINTENANCE BLDG.
ROOF PLAN 01

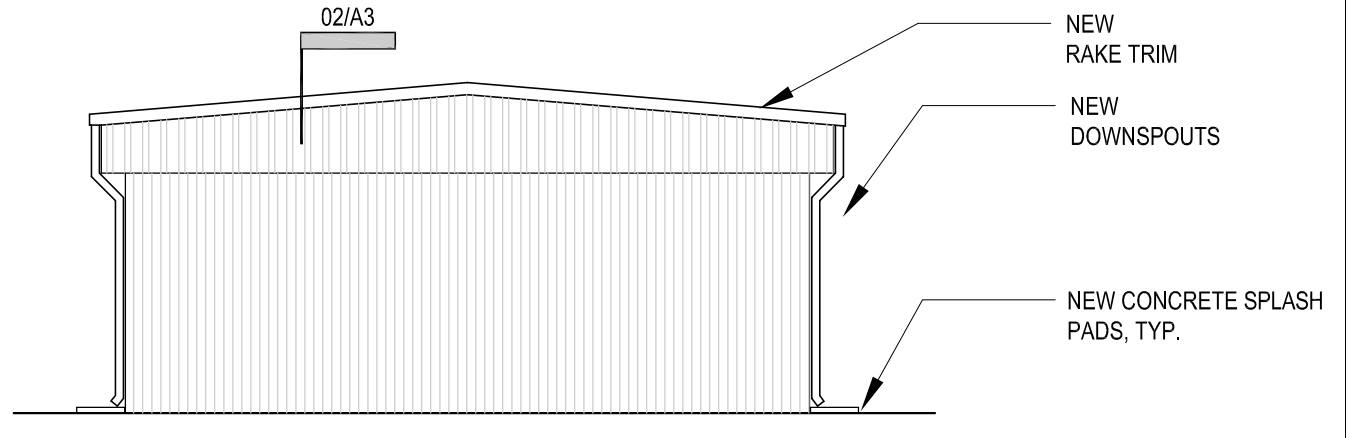
MAINTENANCE PHOTOS 02

SCALE:
N.T.S.



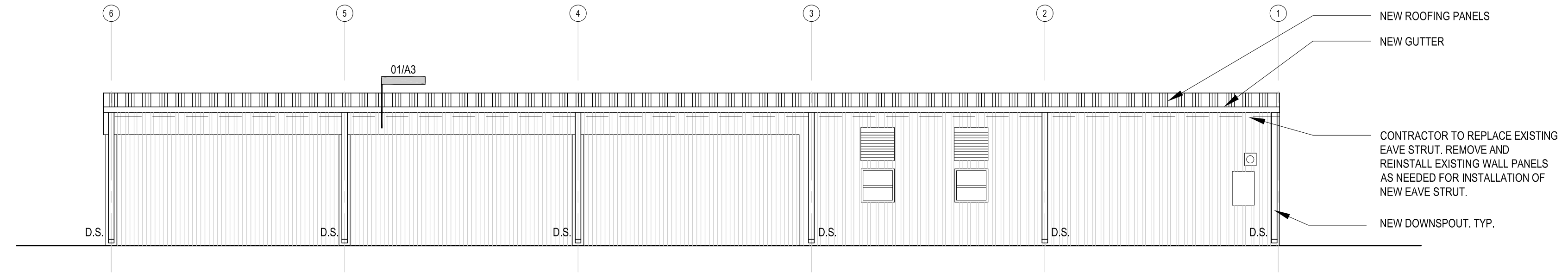
0 SCALE: 8'-0"
1/8" = 1'-0"

NOT USED 05



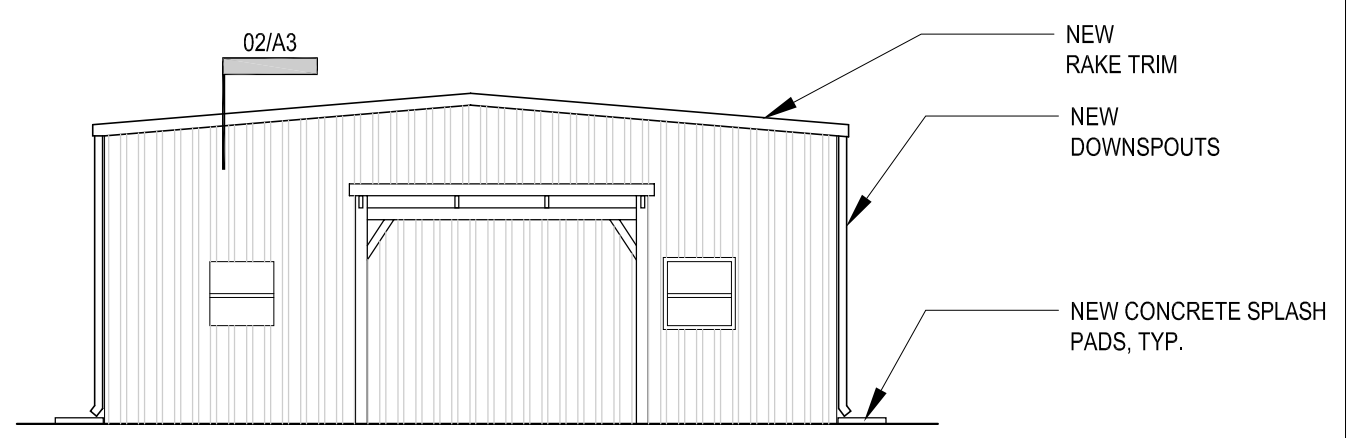
0 SCALE: 8'-0"
1/8" = 1'-0"

WEST ELEVATION 04



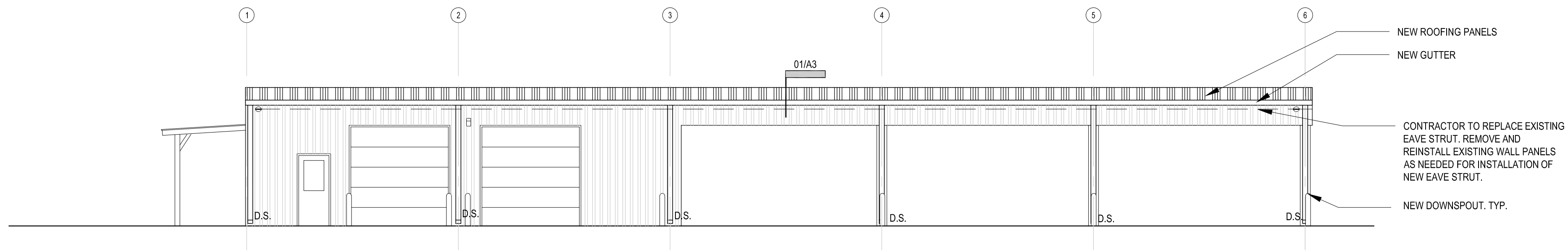
0 SCALE: 8'-0"
1/8" = 1'-0"

SOUTH ELEVATION 03



0 SCALE: 8'-0"
1/8" = 1'-0"

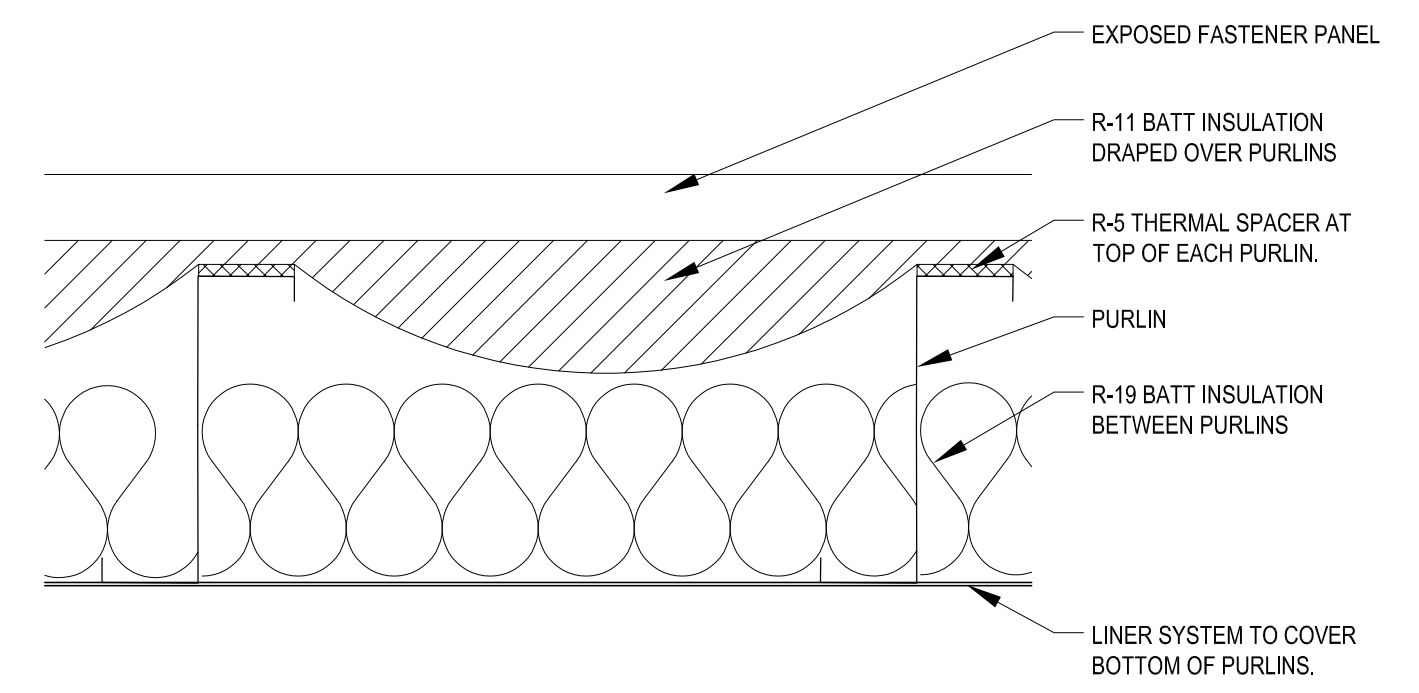
EAST ELEVATION 02



0 SCALE: 8'-0"
1/8" = 1'-0"

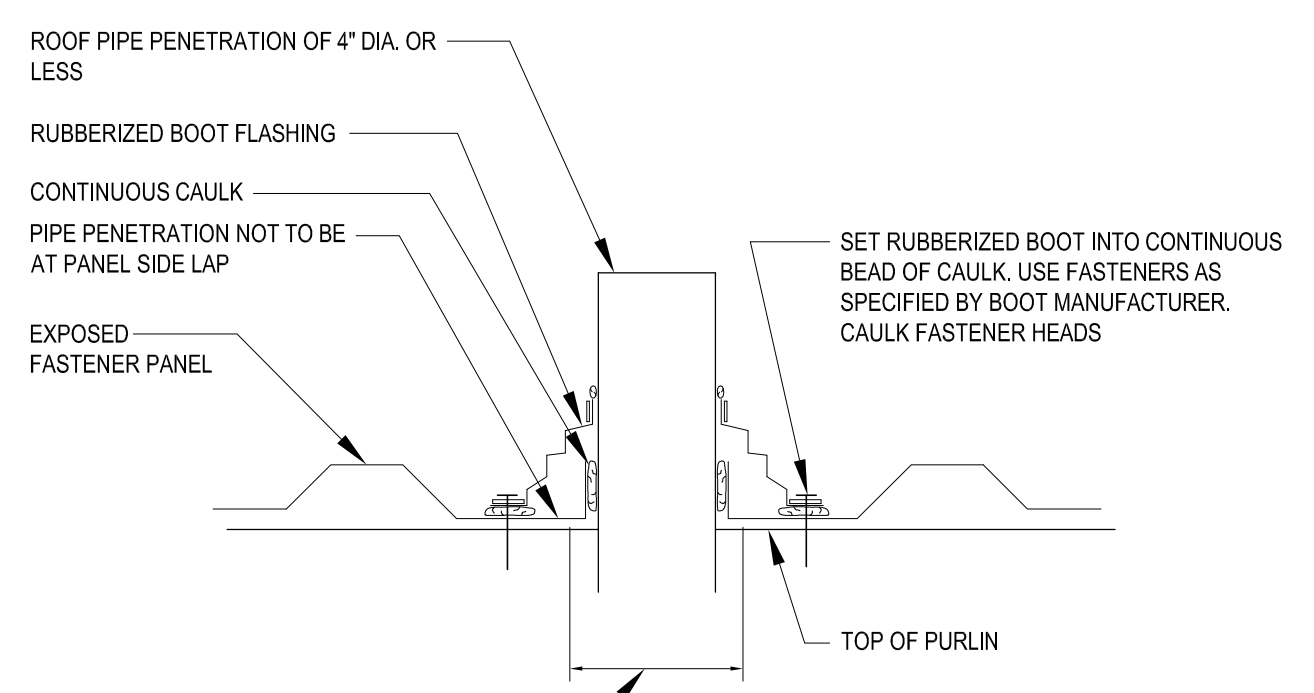
NORTH ELEVATION 01

NOTES:
1. DETAILS ARE FROM BERRIDGE U.N.O.
2. FOLLOW INSTALLATION DETAILS AND GUIDELINES FROM ROOFING PRODUCT MANUFACTURER.
3. IF DETAILS DO NOT EXIST FOR A PARTICULAR SITUATION, CONTACT ARCHITECT BEFORE PROCEEDING.



SCALE:
N.T.S.

INSULATION DETAIL 05



CUT PANEL 1" SMALLER THAN PENETRATION, BACK CUT TABS, FOLD TABS UP AROUND PENETRATION AND CAULK

NOTE:
IF PIPE IS MADE OF METAL IT MUST BE PAINTED TO PREVENT RUST RUN-OFF FROM STAINING PANELS.

NOTE:
POSITION SQUARE BASED BOOTS IN A DIAMOND ORIENTATION WHERE POSSIBLE TO AID IN DIVERTING WATER

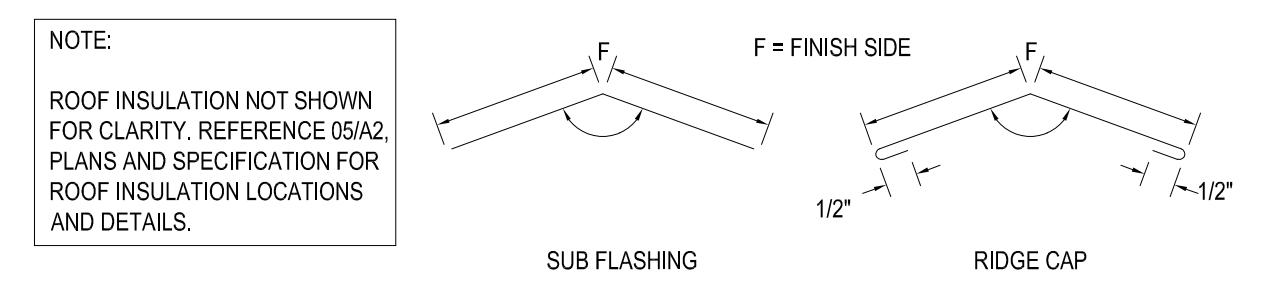
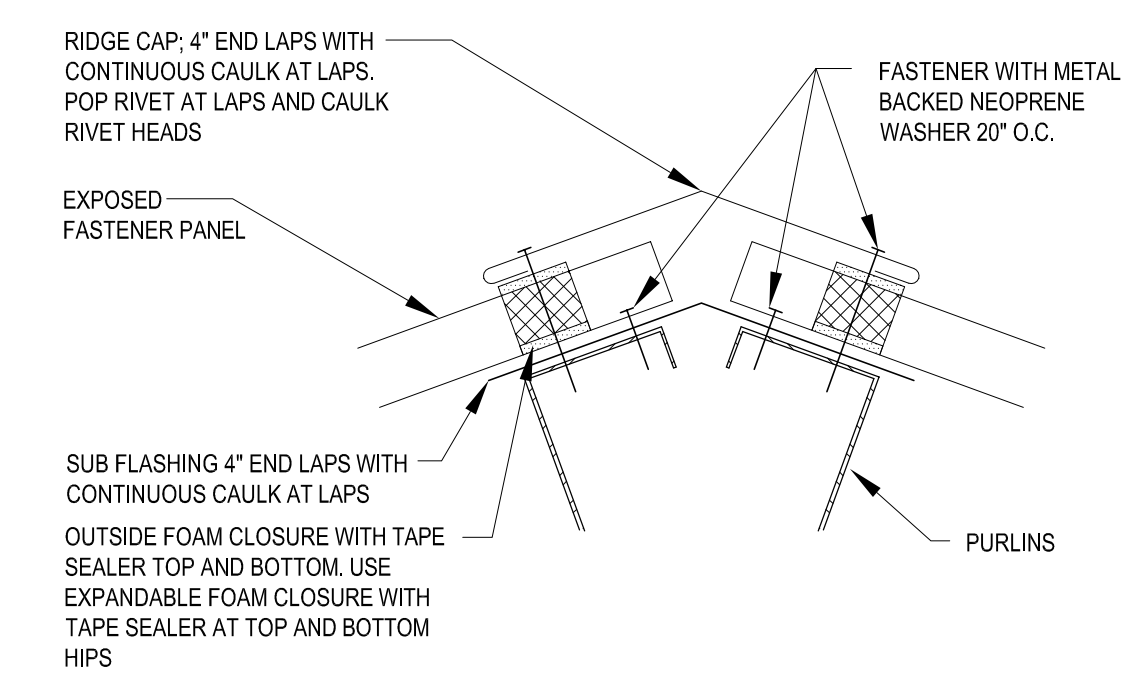
NOTE:
ROOF INSULATION NOT SHOWN FOR CLARITY. REFERENCE 05/A2, PLANS AND SPECIFICATION FOR ROOF INSULATION LOCATIONS AND DETAILS.

PIPE PENETRATION IN PAN OF PANEL ONLY 4" DIA. OR LESS

PAGE/FILE
MR-80

SCALE:
N.T.S.

PENETRATION DETAIL 04



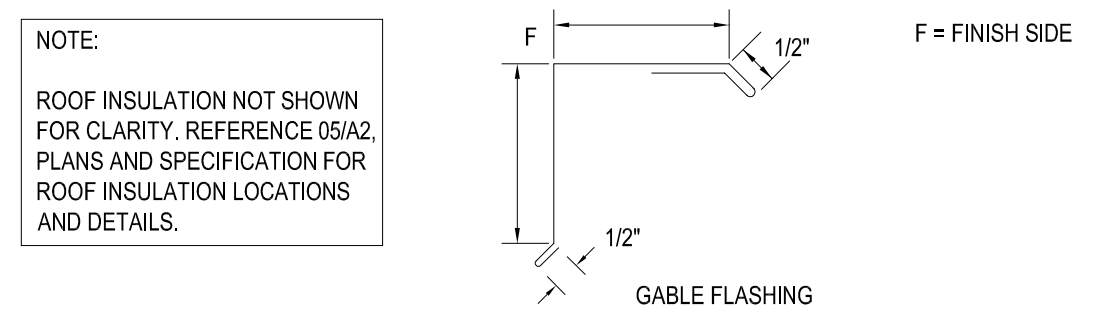
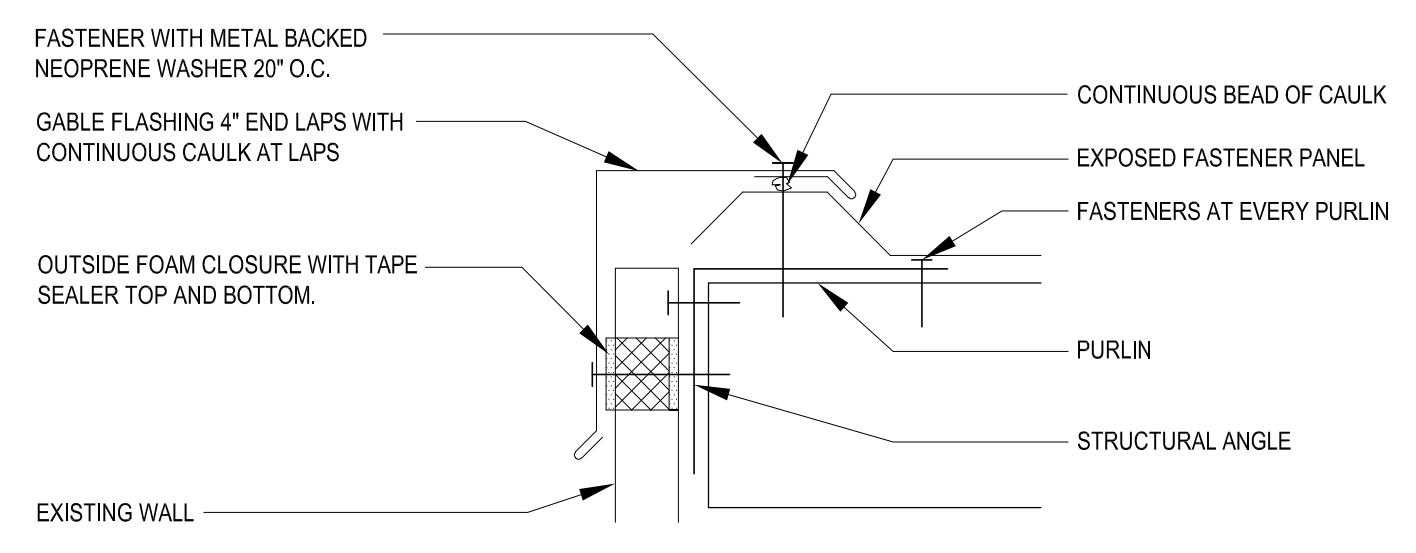
NOTE:
ROOF INSULATION NOT SHOWN FOR CLARITY. REFERENCE 05/A2, PLANS AND SPECIFICATION FOR ROOF INSULATION LOCATIONS AND DETAILS.

RIDGE DETAIL OPEN FRAMING

PAGE/FILE
MR-22

SCALE:
N.T.S.

RIDGE DETAIL 03



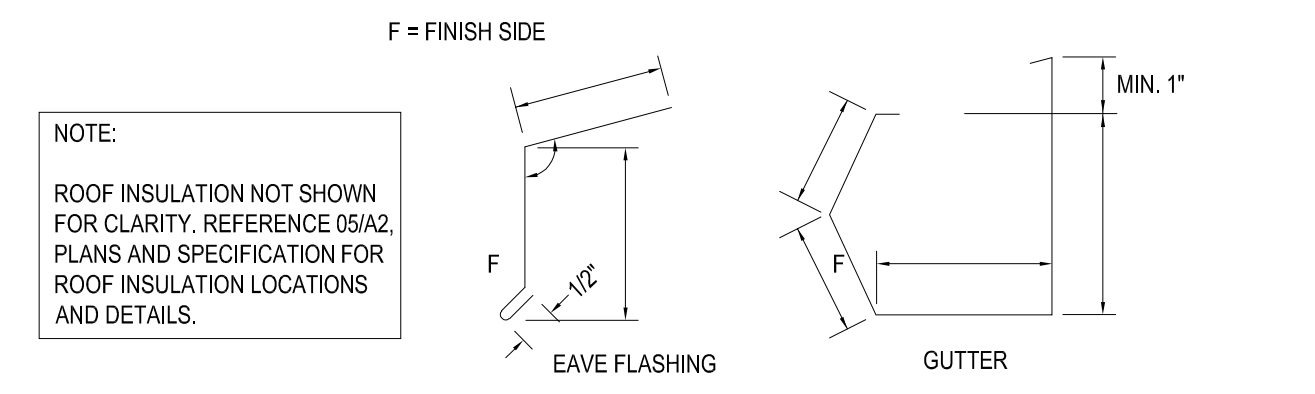
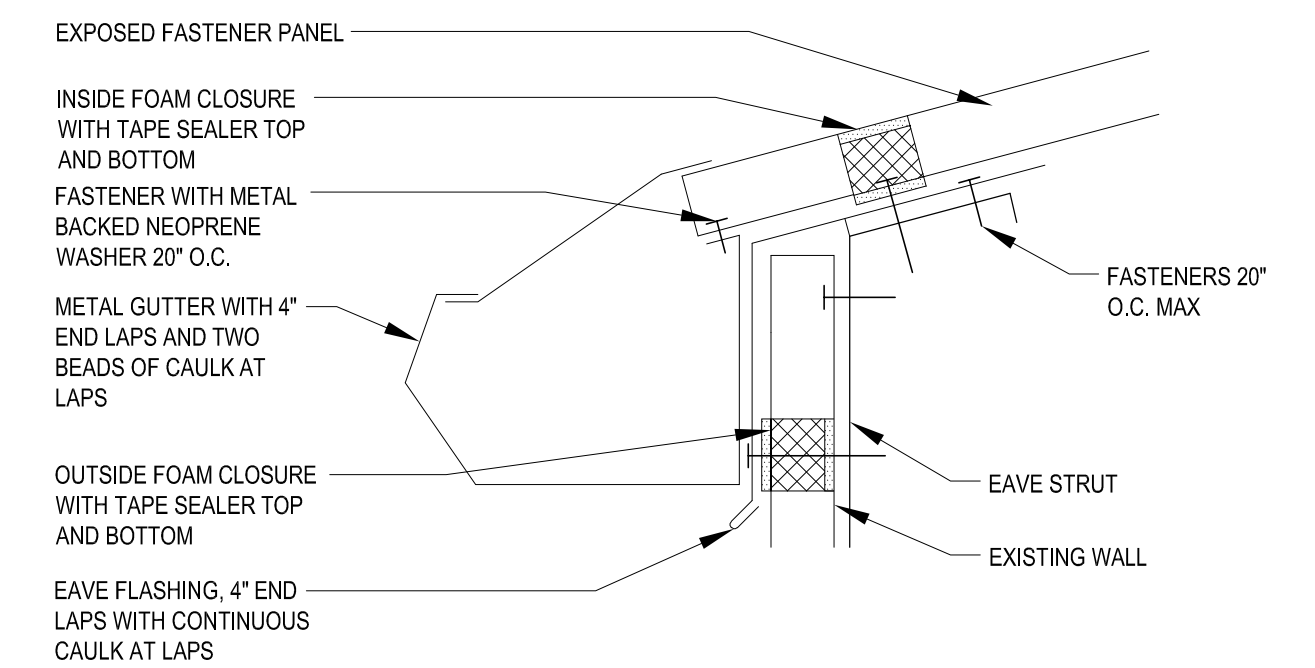
NOTE:
ROOF INSULATION NOT SHOWN FOR CLARITY. REFERENCE 05/A2, PLANS AND SPECIFICATION FOR ROOF INSULATION LOCATIONS AND DETAILS.

GABLE DETAIL OPEN FRAMING

PAGE/FILE
MR-31

SCALE:
N.T.S.

RAKE DETAIL 02



NOTE:
ROOF INSULATION NOT SHOWN FOR CLARITY. REFERENCE 05/A2, PLANS AND SPECIFICATION FOR ROOF INSULATION LOCATIONS AND DETAILS.

EAVE DETAIL OPEN FRAMING

PAGE/FILE
MR-13

SCALE:
N.T.S.

GUTTER DETAIL 01