

TPWD Project 1112121



Black Gap WMA Bunkhouse Restroom Repairs

Material Selections and Samples

Selected Material Selections shown herein are a 'basis of design' or to be selected as equal or better.

The regional management of the Wildlife division has requested that materials and products used in this project be available from local sources for the ease of possible future maintenance. Most of the selected materials and products are available at the local McCoy's in Alpine, TX.

The project is funded from a Federal Grant, whose Terms and Conditions contain the **Buy America** provision established in the **Build America Buy America Act** for the required use of American Iron, Steel, Manufactured Products, and Construction Materials for Infrastructure. **Note:** the materials and products herein have not been source checked for compliance with the Buy America provision.

100% CDs Final



05-30-2025



My Store: **Alpine**
Open Today 7am-7pm

Home / Doors & Windows / Exterior Doors / Front Entry Doors



McCOY'S

Install into
custom
wood frame

36 in x 80 in, 6 Lite, Craftsman, 2 Panel, Smooth, Fiberglass, Prehung Door, Right Hand, Satin Nickel Hinges

Sku: 14072541

\$448.99

PayPal Pay in 4 interest-free payments of \$112.25. [Learn more](#)

1

Add to Cart

2 Available at **Alpine**

Location: **Aisle 20**

Description

McCoy's Exterior Door, Exterior Fiberglass, Rough Opening 38-1/2"x82-1/2", Satin Nickel Ball Bearing Hinges, 4-9/16" No Rot Primed Jambs

Features

- Unfinished and Ready for Paint
- Smooth Surface
- Clear Insulated Glass
- Rough Opening 38-1/2"x82-1/2"
- Satin Nickel Ball Bearing Hinges
- 4-9/16" Mill Finish Adjustable Sill
- 4-9/16" No Rot Primed Jambs

Division 9: Finishes

Wetwall[™]
— A WILSONART COMPANY —



W7075



**Pro Plus Design Panel
Sample in Graceful Lines**

[ORDER A SAMPLE](#)



W7066



**Pro Plus Design Panel
Sample in Harmony Mist**

[ORDER A SAMPLE](#)



W7054



**Pro Design Panel Sample in
Larisis Marble**

[ORDER A SAMPLE](#)



W7042



**Pro Design Panel Sample in
Legacy Ash**

[ORDER A SAMPLE](#)





Search text...

[\(/CONTACT-US\)](#)

[\(/STORE-LOCATOR\)](#)

[\(/FAVORITES\)](#)

[\(/CART\)](#)

[\(/ACCOUNTS/MY-ACCOUNT\)](#)

[\(HTTPS://WWW.TRADEPROEXCHANGE.COM/\)](https://www.tradeexchange.com/)



COUNTERTOP | FLOOR | WALL

Mist

BRYNE

[\(/products/Stone-Look/Bryne\)](#)

Tiny crystal speckles in the soft veining create a subtle shimmer in Bryne stone look porcelain tile.

[GO TO APPLICATION INFO >](#)

[GO TO TECHNICAL SPECIFICATIONS >](#)

[GO TO DURABILITY CHART >](#)

Want to see this product in person?

[Where to buy \(/Store-Locator-Tile-and-Exterior\)](#)



[View in a Room](#)

[360 View](#)

[Gallery](#)



[\(/CONTACT-US\)](#)[\(/STORE-LOCATOR\)](#)[\(/FAVORITES\)](#)[\(/CART\)](#)[\(/ACCOUNTS/MY-ACCOUNT\)](#)[\(HTTPS://WWW.TRADEPROEXCHANGE.COM/\)](https://www.tradeexchange.com/)

Mist Rectangle

Color Code: BR31

Thickness: 5/16

Size: 12X24

Finish: Matte

Shade Variation: V2: Medium

Country of Origin: United States

ORDER SAMPLE

VIEW IN A ROOM



Mist Rectangle Fluted

Color Code: BR31

Thickness: 5/16

Size: 12X24

Finish: Satin

Shade Variation: V2: Medium

Country of Origin: Mexico

ORDER SAMPLE

VIEW IN A ROOM



Mist Straight Joint

Color Code: BR31

Thickness: 1/4, 5/16

Size: 1X6, 2X2

Finish: Matte

Shade Variation: V2: Medium

Country of Origin: Mexico

ORDER SAMPLE

VIEW IN A ROOM



Mist Square

Color Code: BR31

Thickness: 5/16

Size: 24X24

Finish: Matte

Shade Variation: V2: Medium

Country of Origin: United States

ORDER SAMPLE

VIEW IN A ROOM





Dry & Level - Interior Floor	N/A	✓
Wet & Level - Interior Floor	≥0.42	✓
Shower Floors (Residential or Light Commercial)	≥0.42	✓
Exterior Floor Applications (including pool decking & other wet areas with minimal footwear)	≥0.60	
Ramps & Inclines	≥0.65	
Walls/Backsplashes	N/A	✓
Countertops	N/A	✓
Pool Linings	N/A	✓

Grout Joint Recommendation: 1/8"

- Manufacturer Advisory: All tile is measured by the DCOF AcuTest™ method. Tiles with DCOF values less than 0.42 are not recommended for use in areas with wet or slippery conditions. For more information, see ANSI standard A137.1 section 6.2.2.1.10, available at [www.tileusa.com](#).
- A DCOF value of greater than or equal to 0.42 is the standard for tiles specified for level interior spaces expected to be walked upon when wet, as stated in ANSI A137.1-A326.3. For more information about DCOF and the DCOF AcuTest™, visit [daltille.com/DCOF](#).

Application Notes:
No additional notes

TECHNICAL SPECIFICATIONS

	TEST METHOD	MOSAIC TILE	FLOOR TILE	WALL TILE
Water Absorption	ASTM C373	< 3.0	< 0.5	< 20.0
Breaking Strength	ASTM C648	> 250 lbs	> 275 lbs	120-230 lbs
Scratch Hardness	ASTM MOHS	4.0-8.0	8	4.0-6.0
Chemical Resistance	ASTM C650	Resistant	Resistant	Resistant

Phenolic Toilet Partitions

Phenolic restroom dividers are one of the most durable and vandal resistant toilet partition materials available. Phenolic bathroom partitions also offer superior moisture resistance in locker rooms, shower areas, and high traffic public washrooms. Our Experts recommend phenolic core toilet partitions for rec centers, pools, retail stores, schools, airports, offices, and other high moisture or high traffic applications.

 888.207.3005 x 1

 quotes@sustainablesupply.com

 [Online Quote Form](#)

- **Moderate Cost - Starting at \$610**
- **48-Hour Quick Shipping Available**
- **ADA Compliant**
- **Available in a Wide Range of Mounting and Color Options**
- **Enhanced Privacy Options Available**
- **Best for High Moisture Environments and High Traffic Applications**
- **25 Year Warranty**

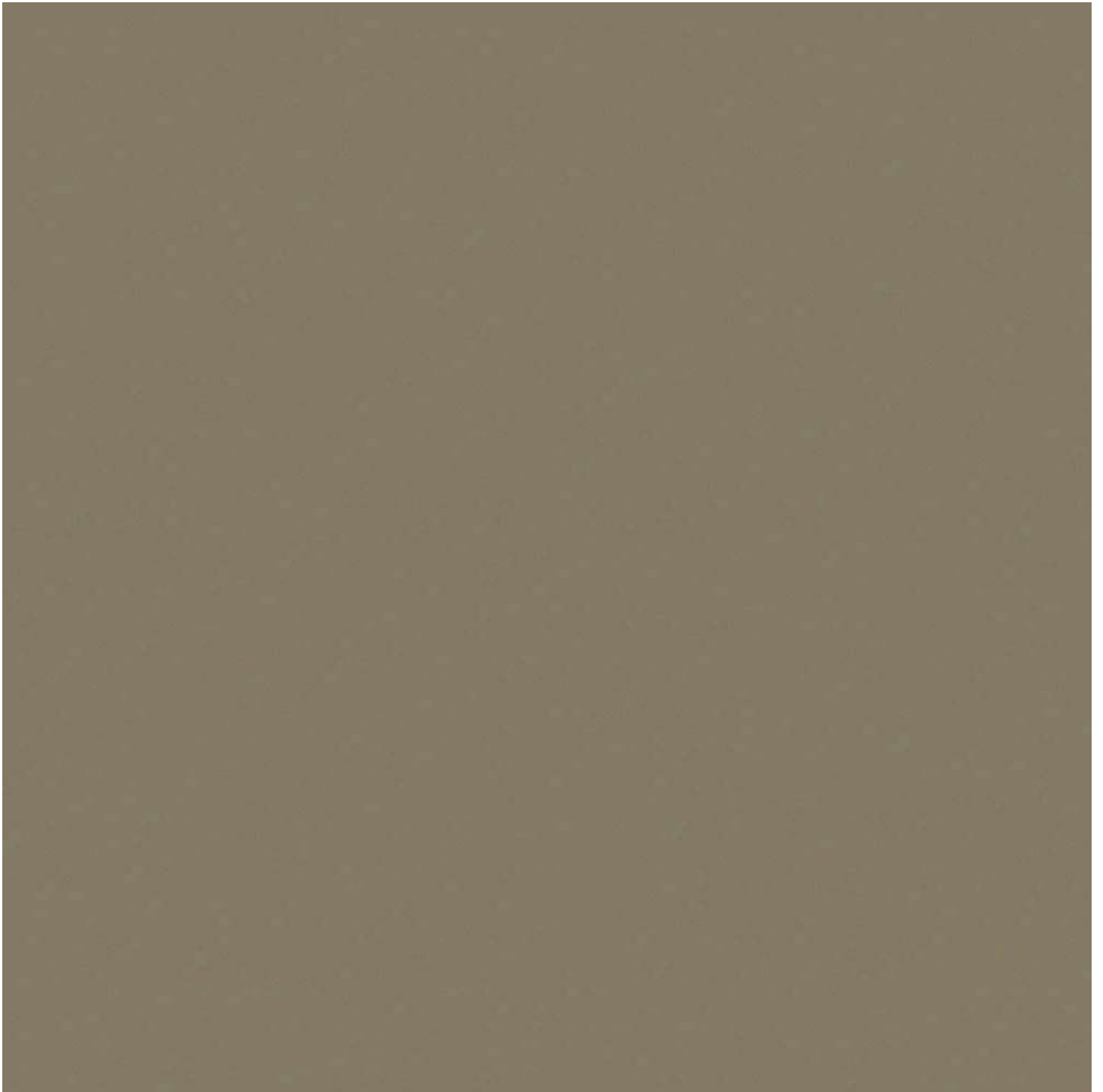
We offer phenolic toilet partitions from all of the top brands including Bradley, ASI Global, Bobrick, and Columbia.

Phenolic restroom partitions are available in 12 standard colors, and can be special ordered with over 300 colors and patterns to choose from. Flexible mounting include floor-mounted with overhead bracing, ceiling hung, floor braced, and floor-to-ceiling hung.

48 Hour Shipping available! Our In-Stock nationwide inventory is ready to ship to your jobsite.

Phenolic bathroom partitions are also available with enhanced privacy options such as extended height panels and doors, privacy strips, and continuous mounting hardware that eliminate sightlines in public washrooms. Contact our Experts for more information about what privacy options are available and learn why many customers are opting to install them.





SHADOW

Filters

Best Match ▾

Phenolic Phenolic ✕

59 results



Bradley Toilet Partition (Phenolic) 1 Between Wall (36" W x 61-1/4" D) - BW33660-PBC

\$937.80

Add to Cart



Bradley Toilet Partition (Phenolic) 1 ADA Between Wall (60" W x 61-1/4" D) Phenolic - BW33660-PBC

\$711.00

Add to Cart



Bradley Toilet Partition (Phenolic) 1 ADA In Corner (60" W x 61-1/4" D) ICADA-PBC

\$1745.10

Add to Cart



Bradley Toilet Partition (Phenolic) 1 In Corner (36" W x 61-1/4" D) IC33660-PBC

\$1456.20

Add to Cart



Bradley Toilet Partition (Phenolic) 2 Between Wall (72" W x 61-1/4" D) BW23660-PBC

\$2079.90

Add to Cart



Bradley Toilet Partition (Phenolic) 2 In Corner (72" W x 61-1/4" D) IC23660-PBC

\$2690.10

closest plan example

Add to Cart

[Back to top](#)



Bradley (Phenolic) Stall Door (28" W x 58" H) - C490-28 - Toilet Partition Door

\$525.60

Add to Cart



Bradley (Phenolic) Stall Door (20" W x 58" H) C490-20 - Toilet Partition Door

\$452.70

Add to Cart



Bradley (Phenolic) Toilet Partition Door (24"W x 58"H) - C490-24

\$473.40

regular toilet stall's door

Add to Cart



Bradley (Phenolic) Stall Door (26" W x 58" H) - C490-26 - Toilet Partition Door

\$501.30

Add to Cart



Bradley (Phenolic) Stall Door (22" W x 58" H) - C490-22 - Toilet Partition Door

\$452.70

Add to Cart



Bradley (Phenolic) Stall Door (36" W x 58" H) - C490-36 - Toilet Partition Door

\$631.80

Add to Cart



Bradley (Phenolic) Stall Door (34" W x 58" H) C490-34 - Toilet Partition Door

\$611.10



Bradley (Phenolic) Stall Door (25" W x 58" H) 490-25 - Toilet Partition Door

\$400.00

[Back to top](#)

\$611.10

Add to Cart



Bradley (Phenolic) Stall Door (32" W x 58" H) - C490-32 - Toilet Partition Door

\$570.60

ADA toilet stall's door

Add to Cart



Bradley (Phenolic) Toilet Partition Door (30" W x 58" H) Phenolic - C490-30

\$547.20

Add to Cart



Bradley (Phenolic) Urinal Privacy Screen (18" W x 48" H) Phenolic - C440-12

\$211.50

Add to Cart

\$489.60

Add to Cart



Bradley (Phenolic) Stall Door (32" W x 58" H) - C490-35 - Toilet Partition Door

\$621.00

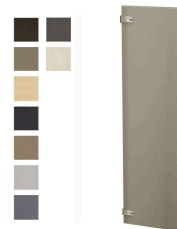
Add to Cart



Bradley (Phenolic) Urinal Privacy Screen (12" W x 48" H) - C474-12

\$198.90

Add to Cart



Bradley (Phenolic) Urinal Privacy Screen (12" W x 42" H) - C472-12

\$198.90

Add to Cart

[Back to top](#)



My Store: **Alpine**
Open Today 7am-7pm

Home / Kitchen & Bath / Bathroom Safety / Grab Bars & Rails



Boston Harbor

SG01-01&0142 Safety Grab Bar, 42 in L Bar, Stainless Steel, Wall Mounted Mounting

Sku: 23151508

\$42.99

Pay in 4 interest-free payments of \$10.75. [Learn more](#)

1

Add to Cart

2 Available at **Alpine**

Location: **Aisle 22**

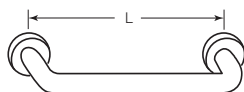
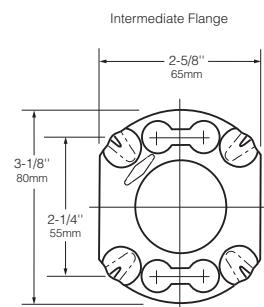
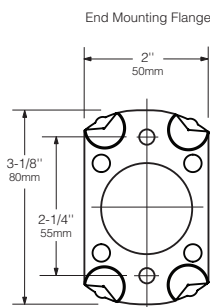
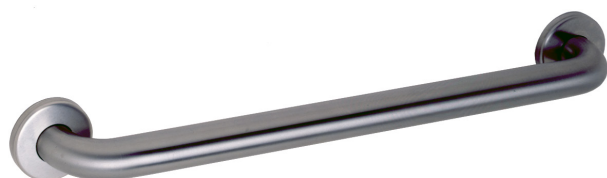
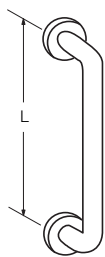
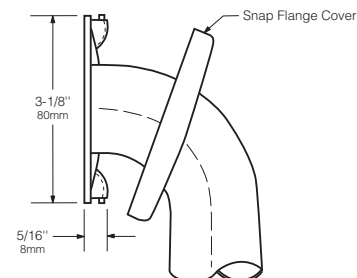
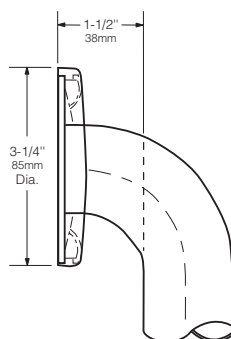
Description	
This commercial grade grab bar is perfect for assisting the elderly, the disabled, the rehabilitation patient or anyone needing additional support and it meets ADA-compliance It has a 500 lbs weight-pull capacity and a concealed screws design.	
Features	
<ul style="list-style-type: none"> • 42 in Heavy-duty commercial grab bar • Made of stainless steel with a 1-1/2 in tubing Dia • Suitable for bath and shower safety • Meets ADA-compliant • 500 lbs weight-pull capacity • Concealed screws design 	
Specifications	
Type	Straight
Projection Size	1.5
Bar Length	42
Mount Flange Diameter	3
Finish	Stainless Steel
Color	Stainless Steel
Material Thickness	20 gauge (1.0 mm)
Length	42 (Including Flange)
Width	3
Height	3.38
Mounting Type	Wall Mounted
Weight	2.77
Includes	Screws

SHOW US WHAT YOU'RE WORKING ON! #MCCOYSBUILDS



BOBRICK**Technical Data****STRAIGHT GRAB BARS,
1¼" (32mm) DIAMETER****B-5806
SERIES**

Specify Finish Required: ☐ Satin-finish, slip-resistant surface.
☐ Peened surface; add suffix .99 to model number

**HORIZONTAL****VERTICAL**

Standard B-5806 Series Grab Bars		
Satin Finish Model	Peened Surface Model	Length
B-5806x12	B-5806.99x12	12" (305mm)
B-5806x18	B-5806.99x18	18" (455mm)
B-5806x24	B-5806.99x24	24" (610mm)
B-5806x30	B-5806.99x30	30" (760mm)
B-5806x36	B-5806.99x36	36" (915mm)
B-5806x42	B-5806.99x42	42" (1065mm)
B-5806x48	B-5806.99x48	48" (1220mm)

**ADA/ICC/CBC Installation Guidance****Horizontal Grab Bars****Recommended Mounting Heights:**

*ADA/ICC/CBC: 33" min. to 36" above finished floor (AFF)

Vertical Grab Bars**Toilet Compartments Recommended Mounting Heights:**

**ADA/ICC/CBC: Centerline of lower flange 39" min. to 41" above finished floor (AFF)

Shower Compartments Recommended Mounting Heights:

**ADA/ICC/CBC: Centerline of lower vertical grab bar 3" to 6" above gripping surface of horizontal grab bar. Centerline of vertical grab bar is 4" maximum from compartment entry.

*For more information regarding recommended mounting heights, please refer to Bobrick Planning Guide for Accessible Restrooms, page 21.

**For more information regarding recommended mounting heights, please refer to Bobrick Planning Guide for Accessible Restrooms, pages 21, 30, and 32.

continued . . .

MATERIALS:

Grab Bar — 18-8, Type-304, 18-gauge (1.2mm) stainless steel tubing with a satin-finish, slip-resistant surface. 1-1/4" (32mm) outside diameter. Ends are heliarc welded to concealed mounting flanges. Clearance between the grab bar and wall is 1-1/2" (38mm).

Concealed Mounting Flanges — 18-8, Type-304, 11-gauge (3.2mm) thick, stainless steel plate; end flanges 2" x 3-1/8" (50 x 80mm) with holes for attachment to wall. Intermediate flanges 2-5/8" x 3-1/8" (65 x 80mm) wide x 3-1/8" (80mm) diameter.

Snap Flange Covers — 18-8, Type-304, 22-gauge (0.8mm) drawn stainless steel with satin-finish. 3-1/4" (85mm) diameter x 5/8" (16mm) deep. Each cover snaps over mounting flange to conceal mounting screws.

STRENGTH:

Bobrick grab bars that provide 1-1/2" (38mm) clearance from wall can support loads in excess of 900 pounds (408kg) if properly installed. Other grab bar configurations can support loads in excess of 250 pounds (113kg) if properly installed, complying with accessible design (including ADAAG in the U.S.A.) for structural strength.

Safety Warning: Grab bars are no stronger than the anchors and walls to which they are attached and, therefore, must be firmly secured in order to support the loads for which they are intended. To avoid potential injury, the building owner or maintenance personnel should remove the grab bar from service if the grab bar is not adequately secured to wall or if there is any observed damage to the welds.

INSTALLATION:

Provide concealed anchor device or backing as specified or required in accordance with local building codes before wall is finished. Fasten concealed mounting flanges to anchor device or backing with at least two screws opposing each other in each flange. Snap flange covers over each mounting flange to conceal mounting screws. Concealed anchor devices and mounting screws are not included with Bobrick grab bars and must be specified as an accessory.

For Grab Bars with an Intermediate Flange(s), Pull Snap-Flange Covers away from mounting flanges. Place grab bar in desired mounting location. Use intermediate flange as a template to mark location of mounting screws at intermediate flange only. Mark screw locations at the center of the slot in the middle of the double-keyhole shaped mounting holes (2) in the intermediate flange. Remove grab bar from wall. Drive the intermediate flange mounting screws into wall at marked locations. **Note:** Make sure to leave a space of just over 1/8" (3.17mm) between the underside of the screw head and the wall. Install grab bar on the wall by placing the round ends of the intermediate flange double-keyhole shaped mounting holes over the mounting screws (2) are located in the middle of the flange slots. Install the mounting screws into the wall at the end flanges and secure tightly. Tighten the mounting screws at the intermediate flange. Press all snap-flange covers into place to conceal mounting flanges.

Note: Recommend use of 1/4" or #14 sheet metal or wood screws to install Intermediate Flange. #12 screws may also be used.

Important Notes:

1. **Mounting Kits** — Bobrick offers a mounting kit for installing grab bars; **one Bobrick mounting kit is required for each flange.**

Mounting Kit No.	Description
252-30	Consists of (3) #14 x 2½" Type-304 stainless steel, Phillips round-head, sheet-metal screws.

2. **Grab Bar Fastener** — Bobrick offers a grab bar fastening system that secures all Bobrick grab bar series; **one Bobrick fastener is required for each flange.** Install grab bar without backing in wall requires minimum 5/8" (16mm) thick painted or tiled drywall.

WingIt™ Fastener No.	Description
251-4	Consists of 10-32 x 5/16" round-head, Phillips 18/8 stainless steel screws. (1) WingIt grab bar fastener.

3. **Optional Anchor Device** — Bobrick grab bar anchor device includes stainless steel machine screws to be used for attaching grab bars to anchors. **one Bobrick concealed anchor device is required for each flange.**

Optional Anchor No.	Description
2583	Anchor for 3/4" to 1" (19-25mm) panel 1 anchor required for each flange.
2586	Anchor for 1/2" to 1" (13mm) panel 1 anchor required for each flange.

SPECIFICATION:

Grab bar shall be Type-304 stainless steel with a satin-finish, slip-resistant surface. Grab bar shall have 18-gauge (1.2mm) wall thickness and 1-1/4" (32mm) outside diameter. Clearance between the grab bar and wall shall be 1-1/2" (38mm). Concealed mounting flanges shall be 11-gauge (3.2 mm) thick stainless steel plate, 2" x 3-1/8" (50 x 80mm), and equipped with at least two screw holes for attachment to wall. Flange covers shall be 22-gauge (0.8mm) stainless steel, 3-1/4" (85mm) diameter, and shall snap over mounting flanges to conceal mounting screws and/or WingIt fasteners. Ends of grab bar shall pass through concealed mounting flanges and be heliarc welded to form one structural unit. Grab bar shall comply with accessible design (including ADAAG in the U.S.A.) for structural strength.

Grab Bar shall be Model _____ (insert model number) of Bobrick Washroom Equipment, Inc., Clifton Park, New York; Jackson, Tennessee; and Los Angeles, California; Bobrick Washroom Equipment Company, Scarborough, Ontario; Bobrick Washroom Equipment Pty. Ltd., Australia; and Bobrick Washroom Equipment Limited, United Kingdom.

Get free delivery on orders over \$50 with code **FREEDELIVERY**. [See details.](#)



Q

My Store: **Alpine**
Open Today 7am-7pm

Home / Home Interior / Home Decor / Mirrors / Wall Mirrors



24"w X 36" H, see interior elevation, verify field dimensions

Renin

201240 Somerset Frameless Mirror, 36 in L, ~~30 in W~~, Rectangular, Clear Frame

Sku: 131318

\$38.99

Pay in 4 interest-free payments of \$9.75. [Learn more](#)

1

Add to Cart

4 Available at **Alpine**

Description

Rectangle mirror, frameless, 1/2 in beveled edge, distortion-free mirror. Ready to hang hardware included.

Features

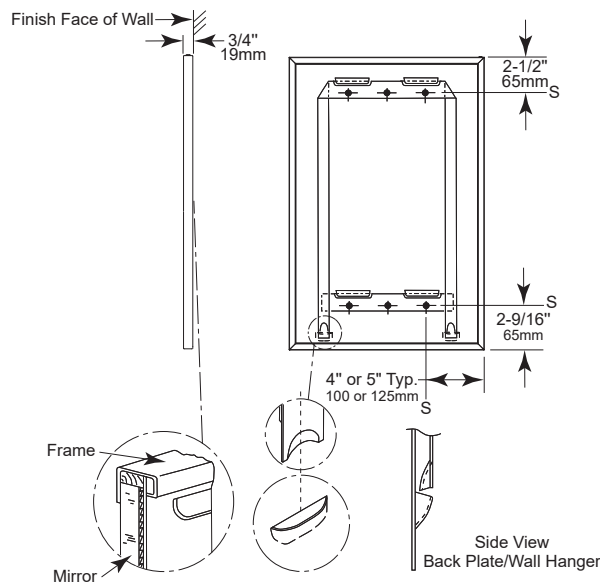
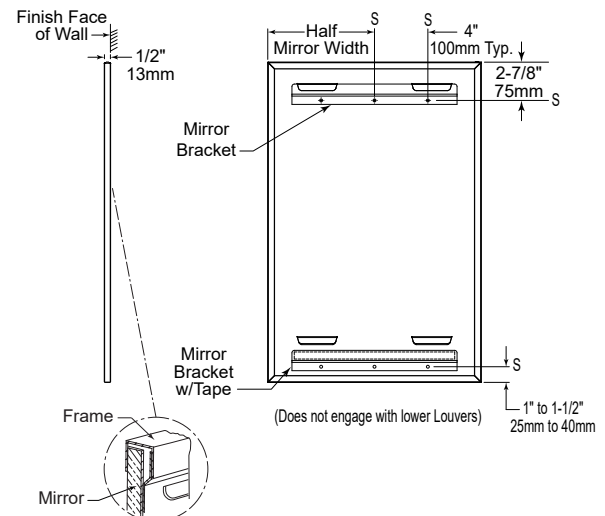
- Hangs vertically or horizontally
- Need a dropdown here

Specifications

Shape	Rectangular
Length	36
Width	30
Thickness	3
Frame Color	Clear
Mounting Type	Wall
Includes	Mounting Hardware

BOBRICK**Technical Data****MIRROR WITH
STAINLESS STEEL
CHANNEL FRAME****B-165
SERIES****Designer's Notes:**

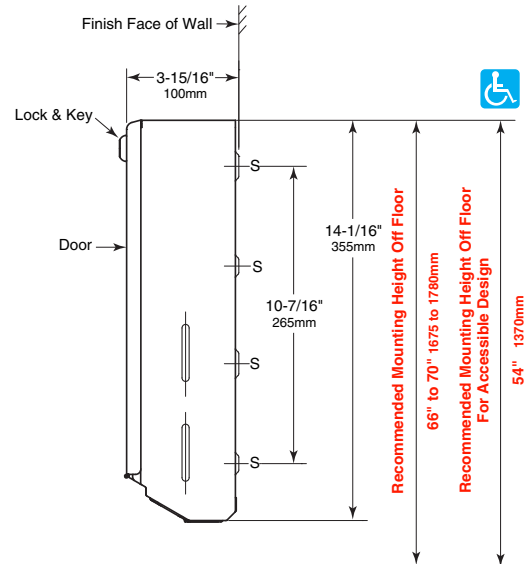
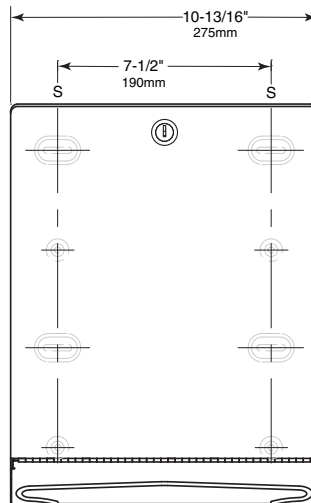
1. Special-order sizes available on request.
2. Maximum size mirror available, 96" x 72" (244 x 183cm); minimum size, 12" x 12" (30 x 30cm).
3. All Bobrick framed mirrors are manufactured to overall width and height dimensions. EXAMPLE: A 24" x 36" (61 x 91cm) mirror will be furnished 24" x 36" (61 x 91cm) outside-of-frame to outside-of-frame.
4. To specify special sizes use Series Number followed by width x height in inches. EXAMPLE: B-165 2024 20" x 24" (51 x 61cm)
5. Bobrick framed mirrors are manufactured to a tolerance 1/8" (3.2mm).
6. For sufficient space to lift mirror onto wall hanger(s), provide 1" (25mm) minimum clearance above top of mirror frame.
7. Provide 1/2" (12.7mm) minimum clearance on each side.

**Snap Locking Design
(Rear View)***Figure: 1***"2S" Tab Design
(Rear View)****- for all other mirrors up to a width of 36"***Figure: 2***STANDARD B-165 SERIES MIRRORS**

MODEL NO.	OVERALL SIZE	
	W	H
B-165 1824	18" (46cm)	24" (61cm)
B-165 1830	18" (46cm)	30" (76cm)
B-165 1836	18" (46cm)	36" (91cm)
B-165 2430	24" (61cm)	30" (76cm)
B-165 2436	24" (61cm)	36" (91cm)
B-165 2448	24" (61cm)	48" (122cm)
B-165 2460	24" (61cm)	60" (152cm)

Note: Mirrors greater than 36" in width will have multiple hanger brackets with a typical 8" off each edge.

continued . . .

BOBRICK**Technical Data****ClassicSeries®
SURFACE-MOUNTED
PAPER TOWEL DISPENSER****B-262****MATERIALS:**

Cabinet — 18-8, type-304, 22-gauge (0.8mm) stainless steel. All-welded construction. Exposed surfaces have satin finish. Towel tray has hemmed opening to dispense paper towels without tearing.

Door — 18-8, type-304, 22-gauge (0.8mm) stainless steel with satin finish. Secured to cabinet with a full-length stainless steel piano-hinge. Equipped with a tumbler lock keyed like other Bobrick washroom accessories.

Optional: Order Bobrick Part No. 262-130 TowelMate® available as an optional accessory. TowelMate accessory allows for paper towels to dispense one at a time without bulging, sagging or falling through the towel tray opening. TowelMate fits Gamco and most manufacturers' similar models.

OPERATION:

Unit dispenses C-fold and multifold paper towels 3-1/8" to 3-13/16" (79–97mm) deep. Slots in sides of cabinet indicate refill time. Capacity: 400 C-fold or 525 multifold paper towels. To dispense narrower towels 2-1/2" to 3-1/8" (64–79mm) deep, order optional TowelMate accessory Bobrick Part No. 262-130.

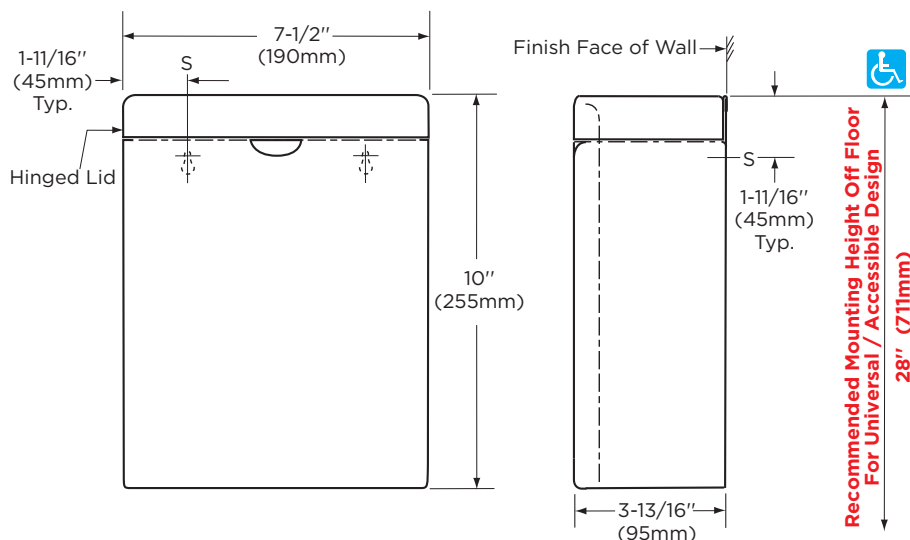
INSTALLATION:

Mount unit on wall with four #10 x 1-1/4" (4.8 x 32mm) sheet-metal screws (not furnished) at four of the eight mounting holes indicated by an S (top slots and bottom holes preferable). For plaster or dry wall construction, provide concealed backing to comply with local building codes, then secure with sheet-metal screws. For other wall surfaces, provide fiber plugs or expansion shields for use with sheet-metal screws, or provide 1/8" (3mm) toggle bolts or expansion bolts.

SPECIFICATION:

Surface-mounted paper towel dispenser shall be type-304 stainless steel with all-welded construction; exposed surfaces shall have satin finish. Door shall be secured to cabinet with a full-length stainless steel piano-hinge and equipped with a tumbler lock keyed like other Bobrick washroom accessories. Paper towel tray shall have hemmed opening to dispense paper towels without tearing. Unit shall be capable of dispensing 400 C-fold or 525 multifold paper towels measuring 3-1/8" to 3-13/16" (79 to 97mm) deep. Narrower paper towels 2-1/2" to 3-1/8" (65 to 79mm) deep may be efficiently dispensed with the use of an optional TowelMate accessory, Bobrick Part No. 262-130. TowelMate accessory allows for paper towels to dispense one at a time without bulging, sagging or falling through the towel tray opening.

Surface-Mounted Paper Towel Dispenser shall be Model B-262 of Bobrick Washroom Equipment, Inc., Clifton Park, New York; Jackson, Tennessee; Los Angeles, California; Bobrick Washroom Equipment Company, Scarborough, Ontario; Bobrick Washroom Equipment Pty. Ltd., Australia; and Bobrick Washroom Equipment Limited, United Kingdom.

BOBRICK**Technical Data****ConturaSeries®
SURFACE-MOUNTED
SANITARY NAPKIN DISPOSAL****B-270****MATERIALS:**

Container — 18-8, type-304, 22-gauge (0.8mm) stainless steel. All-welded construction. Exposed surfaces have satin finish. Integral finger depression for opening cover. Front of container has same degree of arc as front of cover and other Bobrick ConturaSeries washroom accessories. Radius on side edges of container match corners and edges of cover and other ConturaSeries accessories.

Cover — 18-8, type-304, 22-gauge (0.8mm) stainless steel with satin finish. Drawn, one-piece, seamless construction. Front of cover has same degree of arc as front of container and other Bobrick Contura Series washroom accessories. Radius on corners and edges of cover match side edges of container and other Contura Series accessories. Secured to container with a full-length stainless steel piano-hinge.

OPERATION:

Cover flips up for disposal of sanitary napkins and for servicing container.

INSTALLATION:

For partitions with particle-board or other solid core, secure with two #8 x 3/4" (4.2 x 19mm) sheet-metal screws (not furnished) at all points indicated by an S, or provide through-bolts, nuts, and washers.

For hollow-core metal partitions, provide solid backing into which sheet-metal screws can be secured. If two units are installed back-to-back, then provide threaded sleeves and machine screws for the full thickness of partition.

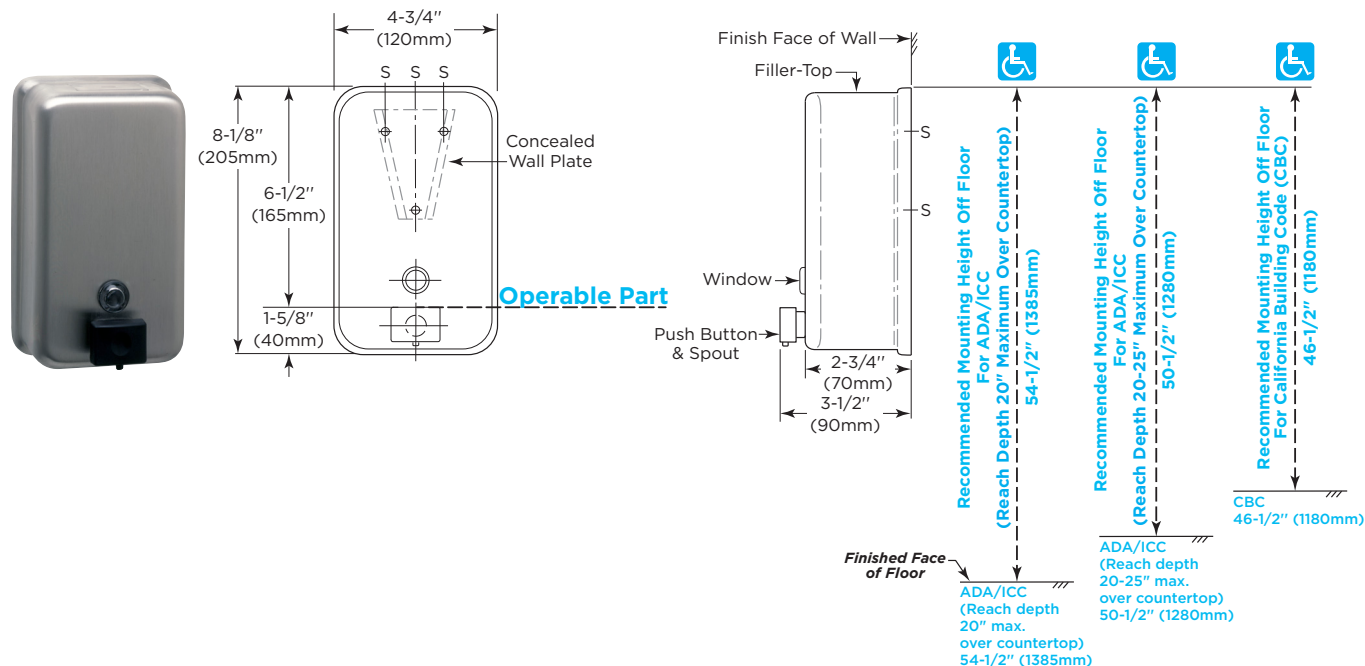
For masonry walls, provide fiber plugs or expansion shields for use with sheet-metal screws, or provide 3/16" (5mm) toggle bolts or expansion bolts.

For plaster or dry wall construction, provide concealed backing to comply with local building codes, then secure unit with sheet-metal screws.

SPECIFICATION:

Surface-mounted sanitary napkin disposal shall be type-304 stainless steel with all-welded construction; exposed surfaces shall have satin finish. Front of sanitary napkin disposal shall have same degree of arc and match other Bobrick ConturaSeries accessories in the washroom. Radius on corners and edges of sanitary napkin disposal shall complement other Bobrick ConturaSeries washroom accessories. Cover shall be drawn, one-piece, seamless construction and secured to container with a full-length stainless steel piano-hinge. Container shall have integral finger depression for opening cover.

Surface-Mounted Sanitary Napkin Disposal shall be Model B-270 of Bobrick Washroom Equipment, Inc., Clifton Park, New York; Jackson, Tennessee; Los Angeles, California; Bobrick Washroom Equipment Company, Scarborough, Ontario; Bobrick Washroom Equipment Pty. Ltd., Australia; and Bobrick Washroom Equipment Limited, United Kingdom.

BOBRICK**Technical Data****ClassicSeries®
SURFACE-MOUNTED
SOAP DISPENSER****B-2111****Installation Guidance**

***Operable Part:** Top of pushbutton

Maximum mounting height of operable part:

ADA/ICC (Reach Depth 20" Maximum Over Countertop): 48" above finished floor (AFF)

ADA/ICC (Reach Depth, 20"-25" Maximum Over Countertop): 44" above finished floor (AFF)

CBC: 40" above finished floor (AFF)

*For more information regarding operable parts, please refer to Bobrick Planning Guide for Accessible Restrooms, page 9.

MATERIALS:

Container — 18-8, Type-304, 22-gauge (0.8mm) stainless steel with satin-finish. Body is drawn, one-piece, seamless construction. Back plate has mounting bracket attached. Furnished with concealed wall plate. Equipped with a clear acrylic refill-indicator window and a locked, hinged stainless steel lid for top filling. Capacity: 40-fl oz (1.2-L).

Valve — Black molded plastic push button and spout. Soap head-holding mushroom valve. Stainless steel spring. U-packing seal and duckbill. Antibacterial-soap-resistant plastic cylinder.

continued . . .

WILSONART SOLID
SURFACE FOR
COUNTERTOP,
BACKSPLASH AND FRONT
SKIRT TRIM.



MONTE AMIATA
9911SS



ARCTIC DRIFT
9246SS

WILSONART® SOLID SURFACE

Timeless style. Seamless
performance.

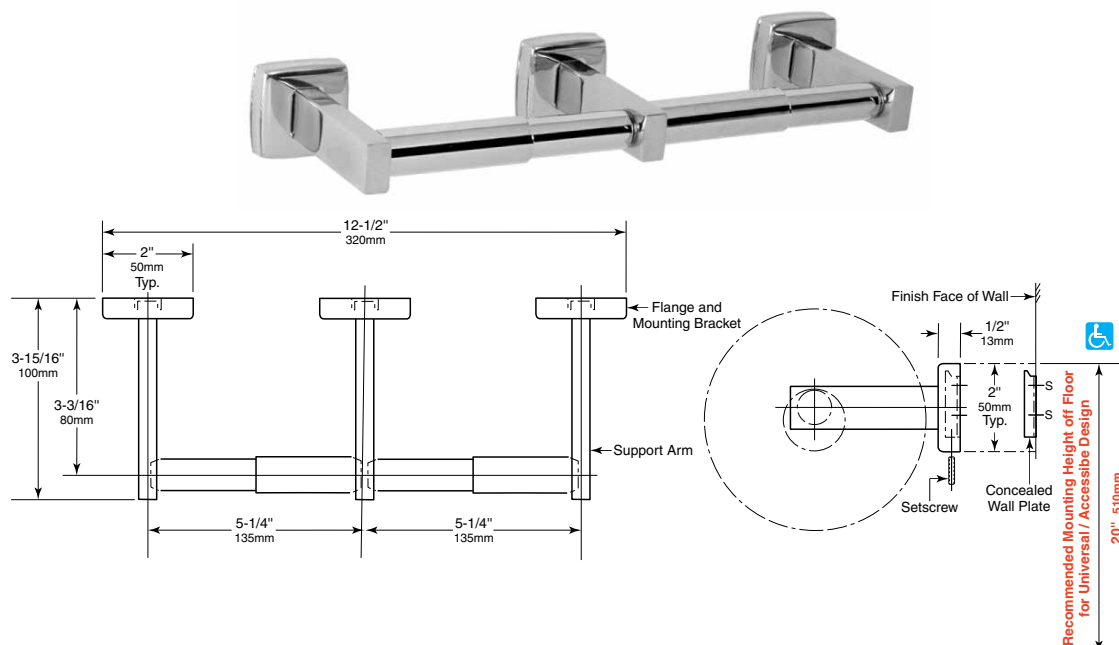
Wilsonart® Solid Surface designs require little effort to maintain their beauty. This renewable and repairable surface is virtually seamless and non-porous, and designed for exceptional durability.



DOUBLE-ROLL STAINLESS STEEL TOILET TISSUE DISPENSER

B-7686 B-76867

Specify Model Required: ☐ Model B-7686 Bright polished stainless steel
☐ Model B-76867 Satin-finish stainless steel



MATERIAL:

Flanges & Support Arms (3) — 18-8, Type-304, 22-gauge (0.8mm) stainless steel. Each flange has a concealed, 18-gauge (1.2mm) stainless steel mounting bracket. All-welded construction. Secured to wall plate with a stainless steel setscrew.

Concealed Wall Plates (3) — 18-8, Type-304, 19-gauge (1.0mm) stainless steel.

Spindles (2) — Chrome-plated plastic. Equipped with heavy-duty internal spring.

INSTALLATION:

To remove concealed wall plates from back of flanges and mounting brackets, loosen setscrews. Mount each wall plate with prongs at top; secure with sheet-metal screws, furnished by manufacturer, at points indicated by an S. Engage mounting brackets onto prongs of wall plate, then secure into position by tightening setscrews at bottom of flanges.

Note: Centerline-to-centerline of concealed wall plates must be within 1/16" (1.6mm) of dimension shown.

For plaster or dry wall construction, provide concealed backing to comply with local building codes, then secure the unit with sheet-metal screws furnished. For other wall surfaces, provide fiber plugs or expansion shields for use with sheet-metal screws furnished by manufacturer, or provide 1/8" (3mm) toggle bolts or expansion bolts.

For partitions with particle-board or other solid core, secure with sheet-metal screws furnished, or provide through-bolts, nuts, and washers. For hollow-core metal partitions, provide solid backing into which the furnished sheet-metal screws can be secured.

SPECIFICATION:

Double-roll toilet tissue dispenser shall be Type-304 stainless steel with _____ (insert one: bright polished or satin) finish. Unit shall accommodate two standard-core toilet paper rolls up to 5-1/2" (140mm) diameter (1800 sheets). Flanges and support arms shall be 22 gauge (0.8mm) and equipped with concealed, 18-gauge (1.2mm) mounting brackets that are secured to concealed, 19-gauge (1.0mm) wall plates with stainless steel setscrews. *Spindles shall be equipped with heavy-duty internal springs.

**Designer's Note: Theft-resistant toilet tissue spindles, which require special key for removal, are available as an optional accessory. Part number for spindle is 283-604.*

Double-Roll Toilet Tissue Dispenser shall be Model _____ (insert model number) of Bobrick Washroom Equipment, Inc., Clifton Park, New York; Jackson, Tennessee; Los Angeles, California; Bobrick Washroom Equipment Company, Scarborough, Ontario; Bobrick Washroom Equipment Pty. Ltd., Australia; and Bobrick Washroom Equipment Limited, United Kingdom.

RONDALYN® COUNTERTOP SINK

- Made from vitreous china
- Self-rimming with cutout template supplied
- Front overflow
- Faucet ledge

- ☐ **0490.011** Faucet holes on 8" (203mm) centers (illustrated)
- ☐ **0491.019** Faucet holes on 4" (102mm) centers
- ☐ **0490.156** Center hole only

Nominal Dimensions:

486mm (19-1/8") Round

Bowl sizes:

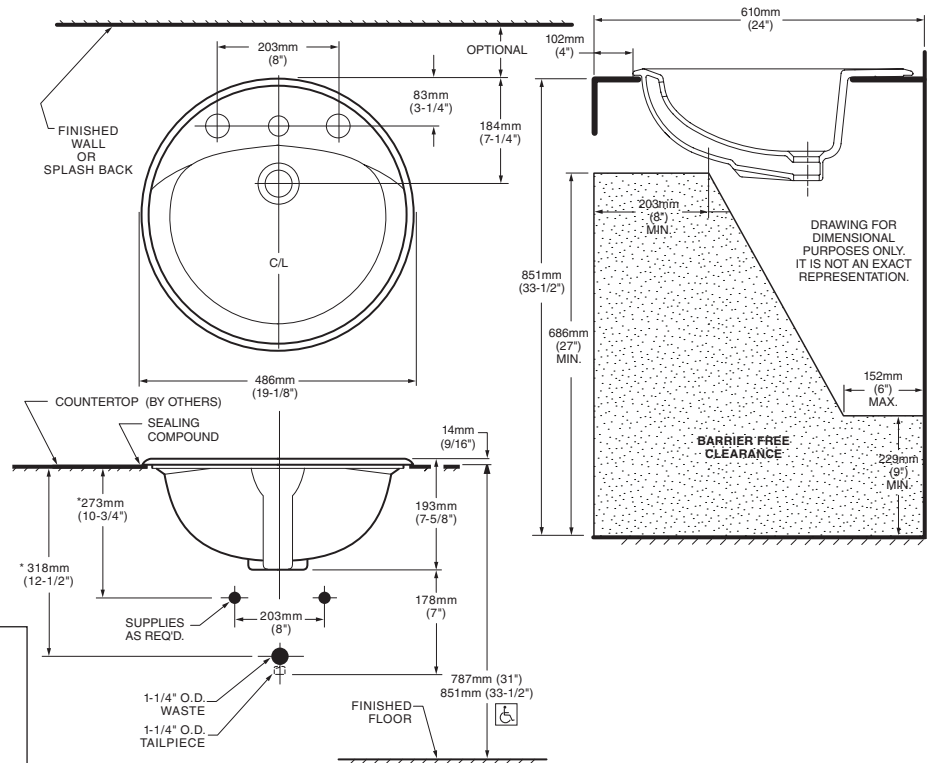
381mm (15") wide

308mm (12-1/8") front to back

146mm (5-3/4") deep

Compliance Certifications - Meets or Exceeds the Following Specifications:

- ASME A112.19.2M for Vitreous China Fixtures



To Be Specified:

- ☐ Color: ☐ White ☐ Bone ☐ Linen
- ☐ Faucet*:
- ☐ Faucet Finish:
- ☐ Supplies:
- ☐ 1-1/4" Trap:

* See faucet section for additional models available



MEETS THE AMERICANS WITH DISABILITIES ACT GUIDELINES AND ANSI A117.1 ACCESSIBLE AND USABLE BUILDINGS AND FACILITIES - CHECK LOCAL CODES.

Install lavatory 864mm (34") from finished floor.

Lavatory installed 51mm (2") minimum from front edge of countertop provides 686mm (27") knee clearance area.

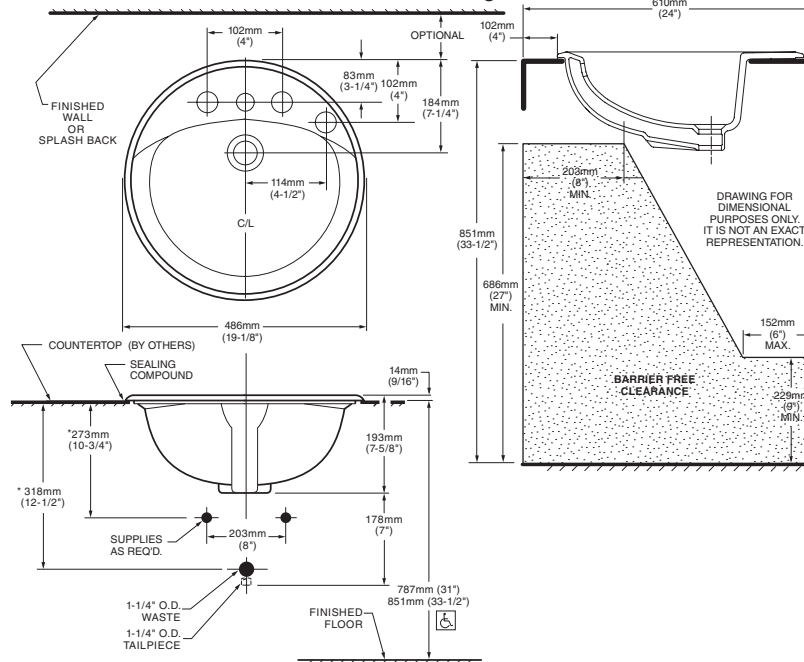
SEE REVERSE FOR ADDITIONAL ROUGHING-IN DIMENSIONS

NOTES:

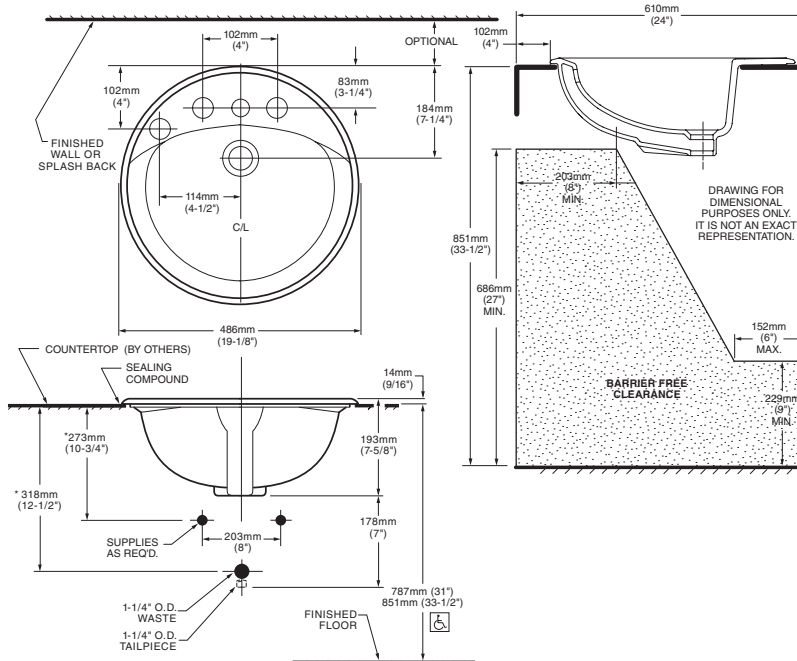
* DIMENSIONS SHOWN FOR LOCATION OF SUPPLIES AND "P" TRAP ARE SUGGESTED. FOR COUNTERTOP CUTOUT AND INSTALLATION INSTRUCTIONS USE TEMPLATE SUPPLIED WITH SINK. FITTINGS NOT INCLUDED WITH FIXTURE AND MUST BE ORDERED SEPARATELY. SEALING COMPOUND SUPPLIED BY OTHERS.

IMPORTANT: Dimensions of fixtures are nominal and may vary within the range of tolerances established by ANSI Standard A112.19.2. These measurements are subject to change or cancellation. No responsibility is assumed for use of superseded or voided pages.

0491.027 4" Ctrs Extra Right Hand Hole



0491.035 4" Ctrs Extra Left Hand Hole



NOTES:

* DIMENSIONS SHOWN FOR LOCATION OF SUPPLIES AND "P" TRAP ARE SUGGESTED.
FOR COUNTERTOP CUTOUT AND INSTALLATION INSTRUCTIONS USE TEMPLATE SUPPLIED WITH SINK.
FITTINGS NOT INCLUDED WITH FIXTURE AND MUST BE ORDERED SEPARATELY.
SEALING COMPOUND SUPPLIED BY OTHERS.

IMPORTANT: Dimensions of fixtures are nominal and may vary within the range of tolerances established by ANSI Standard A112.19.2. These measurements are subject to change or cancellation. No responsibility is assumed for use of superseded or voided pages.



MEETS THE AMERICANS WITH DISABILITIES ACT GUIDELINES AND ANSI A117.1 ACCESSIBLE AND USABLE BUILDINGS AND FACILITIES - CHECK LOCAL CODES.

Install lavatory 864mm (34") from finished floor.
Lavatory installed 51mm (2") minimum from front edge of countertop provides 686mm (27") knee clearance area.

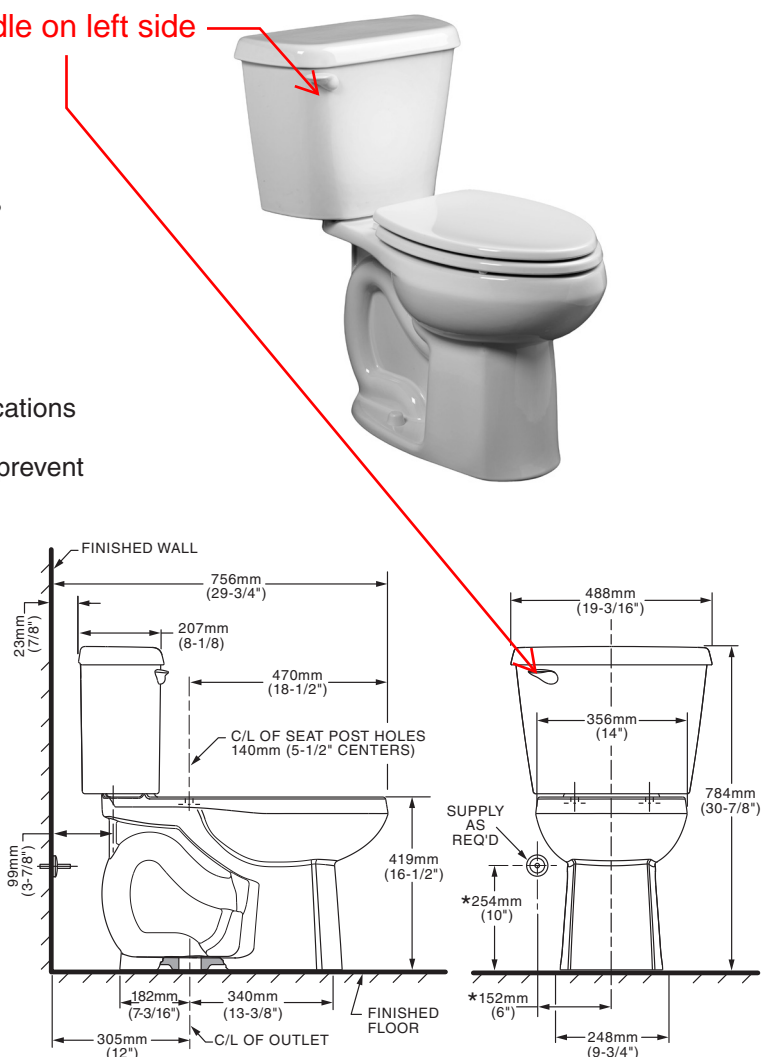
**Colony® Chair Height
Elongated 12" Rough Toilet****751AA101**

- Vitreous china
- High Efficiency Toilet (HET), ultra-low consumption (4.8 Lpf/1.28 gpf), utilizes 20% less water
- Meets EPA WaterSense® criteria
- MaP Score 600g HET
- Includes color matched bolt caps
- 2" flush valve
- 2" trapway
- 16-1/2" rim height for ADA accessible applications
- 12" (305mm) rough-in
- Generous 9" x 8" water surface area helps prevent dirt from sticking to the bowl
- Color matched handle is supplied
- Color matched seat included
- 2 year warranty

Nominal Dimensions:756 x 488 x 784mm
(29-3/4" x 19-3/16" x 30-7/8")

Supply line sold separately

handle on left side

**Compliance Certifications -****Meets or Exceeds the Following Specifications:**

- ASME A112.19.2/CSA B45.1-08 for Vitreous China Fixtures
- US EPA WaterSense® Specification for HETs

NOTES:

THIS TOILET IS DESIGNED TO ROUGH-IN AT A MINIMUM DIMENSION OF 305MM (12") FROM FINISHED WALL TO C/L OF OUTLET. SUPPLY NOT INCLUDED WITH FIXTURE AND MUST BE ORDERED SEPARATELY. * DIMENSION SHOWN FOR LOCATION OF SUPPLY IS SUGGESTED.

IMPORTANT: Dimensions of fixtures are nominal and may vary within the range of tolerances established by ANSI Standard A112.19.2. These measurements are subject to change or cancellation. No responsibility is assumed for use of superseded or voided pages.

To Be Specified:

- ☐ Color: ☐ White ☐ Bone
- ☐ Supply with stop:



MEETS THE AMERICANS WITH DISABILITIES ACT GUIDELINES AND ICC ANSI A117.1 REQUIREMENTS FOR ACCESSIBLE AND USABLE BUILDING FACILITIES-CHECK LOCAL CODES.





Urinal shown with American Standard
#603051.002 Urinal Flush Valve, 0.5 gpf
flush, 20 psi pressure, polished chrome

ALLBROOK® FloWise®
UNIVERSAL URINAL
VITREOUS CHINA



ALLBROOK® FloWise®
UNIVERSAL URINAL

- Vitreous china
- High Efficiency operates in the range of 0.5 gpf to 1.0 gpf (1.9 Lpf/3.8 Lpf)
- Flushing rim
- Siphon jet flush action
- 3/4" inlet spud
- Outlet connection threaded 2" inside (NPTF)
- Wall hanger
- Fixture only
- Meets ANSI flush requirements at 0.5 gpf and 1.0 gpf

6550.001 Top spud

Nominal Dimensions:

363 x 363 x 546mm
(14-5/16" x 14-5/16" x 21-1/2")

Recommended working pressure – between
20 psi at valve when flushing and 80 psi static

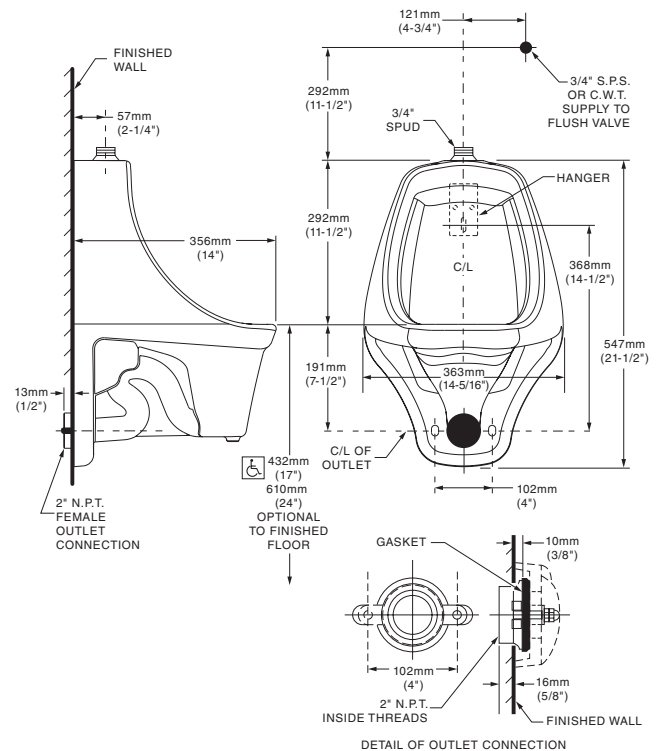
Compliance Certifications -

Meets or Exceeds the Following Specifications:

- ASME A112.19.2-2008/CSA B45.1-08 for Vitreous China Fixtures

To Be Specified:

- ☐ Color: ☐ White
- ☐ Flush Valve:
 - ☐ American Standard Selectronic® #6063.051.002 DC Power (Top Spud)
 - ☐ Manual American Standard #6045.051.002 (Top Spud)



NOTES:
FLUSH VALVE NOT INCLUDED WITH FIXTURE AND MUST BE ORDERED SEPARATELY.
PROVIDE SUITABLE REINFORCEMENT FOR ALL WALL SUPPORTS.

IMPORTANT: Dimensions of fixtures are nominal and may vary within the range of tolerances established by ANSI Standard A112.19.2. These measurements are subject to change or cancellation. No responsibility is assumed for use of superseded or voided pages.



When used with
0.5 gpf urinal
flush valves

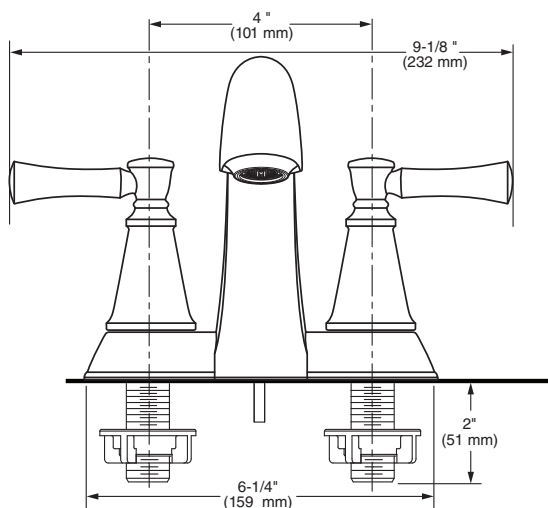


**MEETS THE AMERICANS WITH DISABILITIES ACT GUIDELINES
AND ANSI A117.1 ACCESSIBLE AND USEABLE BUILDINGS AND
FACILITIES - CHECK LOCAL CODES.**

- When installed so top of rim is 432mm (17") from finished floor.

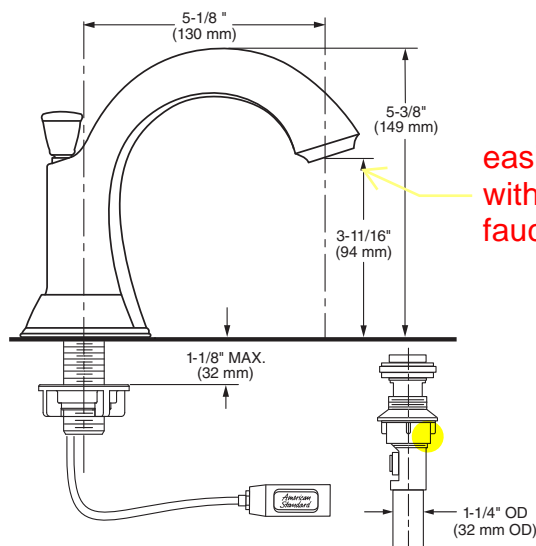
*American
Standard*

CHANCELLOR™ DUAL CONTROL CENTERSET BATH FAUCET



MODEL NUMBER:

- ❑ **7022201.002 Centerset Lavatory Faucet**
Speed Connect® pre-assembled drain.
Metal lever handles. Polished Chrome finish.
SKU# 673-3560.
- ❑ **7022201.075 Centerset Lavatory Faucet**
Speed Connect pre-assembled drain.
Metal lever handles. **Brushed Nickel finish.**
SKU# 673-3561.



Easier Installation

SPEED CONNECT® DRAIN

Reliable For Life



Guaranteed Not To Leak

CERAMIC DISC VALVE

Reliable For Life



Beautiful & Tough

**TARNISH, SCRATCH AND
CORROSION RESISTANT FINISH**

Reliable For Life

GENERAL DESCRIPTION:

Centerset lavatory faucet on 4" centers. 1/4 turn washerless ceramic disc valve cartridges. Durable non-metal waterways with one-half inch male inlet shanks. Metal body. Metal lever handles. 20" (500 mm) long flexible stainless steel drain cable is pre-assembled to faucet body. Speed Connect® pre-assembled drain body with 1-1/4 inch (32 mm) tail piece. 1.2 gpm/4.5 L/min. maximum flow rate.

PRODUCT FEATURES:

Speed Connect® Drain:

- 1/3 the parts, installs in 1/3 the time.
- No tools or plumbers putty required for installation.
- No adjustments required - seals the first time, every time.
- Flexible stainless steel cable - installs effortlessly in tight spaces.

Simple Installation: Fast and easy one person installation. Faucet drops in from top.

Ceramic Disc Valve Cartridge: Assures a lifetime of drip-free performance.

Lead Free: Faucet contains ≤ 0.25% total lead content by weighted average.

SUGGESTED SPECIFICATION

Dual control 4" centerset lavatory faucet shall feature a non-metal waterway. Shall also feature 1/4 turn washerless ceramic disc valve cartridges. Shall also feature a drain body with stainless steel cable actuation. Fitting shall be American Standard Model# 7022201.002, SKU# 673-3560. Model# 7022201.075, SKU# 673-3561.

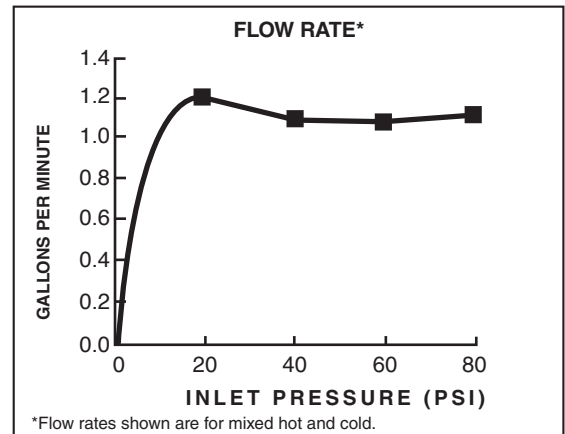


CHANCELLOR™ DUAL CONTROL CENTERSET BATH FAUCET

CODES AND STANDARDS

These products meet or exceed the following codes and standards:

ANSI A117.1
ASME A112.18.1
CSA B125
NSF 61/Section 9
NSF 372



Product Number	Description
7022201.002	Centerset lavatory. Lever handles. Speed Connect® pre-assembled drain. Polished Chrome finish. SKU# 673-3560.
7022201.075	Centerset lavatory. Lever handles. Speed Connect® pre-assembled drain. Brushed Nickel finish. SKU# 673-3561.



Meets the American Disabilities Act Guidelines
ANSI A117.1 Requirements for the physically challenged.

PART OF **LIXIL**

Neo® Trim and Handicap Shower System (Valve not included)

this is not available
at McCoy's**MODELS:**

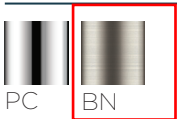
- SLV-1080-ADA: Includes VS-3010 2.5 GPM (9.5 L/min) Flow Rate Hand Held Shower
- SLV-1080-ADA-E175: Includes VS-3010-E175 1.75 GPM (6.6 L/min) Flow Rate Hand Held Shower

FEATURES:

- CPT-1001: Shower Valve Trim
- S-2540: Shower Arm and Flange
- VS-3010 or VS-3010-E175: Hand Shower w/ 60 in. Hose
- VS-156: Pause/Trickle Adaptor
- VS-153-ADA: 24 in. ADA Slide Bar

VALVE OPTIONS:

- CPV-PB: Pressure Balance Valve
Sweat & Thread Connections
- CPV-PB-PXC: Pressure Balance Valve
PEX F1807 Crimp Inlet Connections
- CPV-PB-PXE: Pressure Balance Valve
PEX F1960 Cold-Expansion Inlet Connections
- CPV-T2: Thermostatic Valve
Sweat & Thread Connections
- CPV-T2-PXC: Thermostatic Valve
PEX F1807 Crimp Inlet Connections
- CPV-T2-PXE: Thermostatic Valve
PEX F1960 Cold-Expansion Inlet Connections

STOCK FINISHES:

PC BN

STANDARDS:

- ASME A112.18.1/CSA B125.1 certified
- ADA compliant

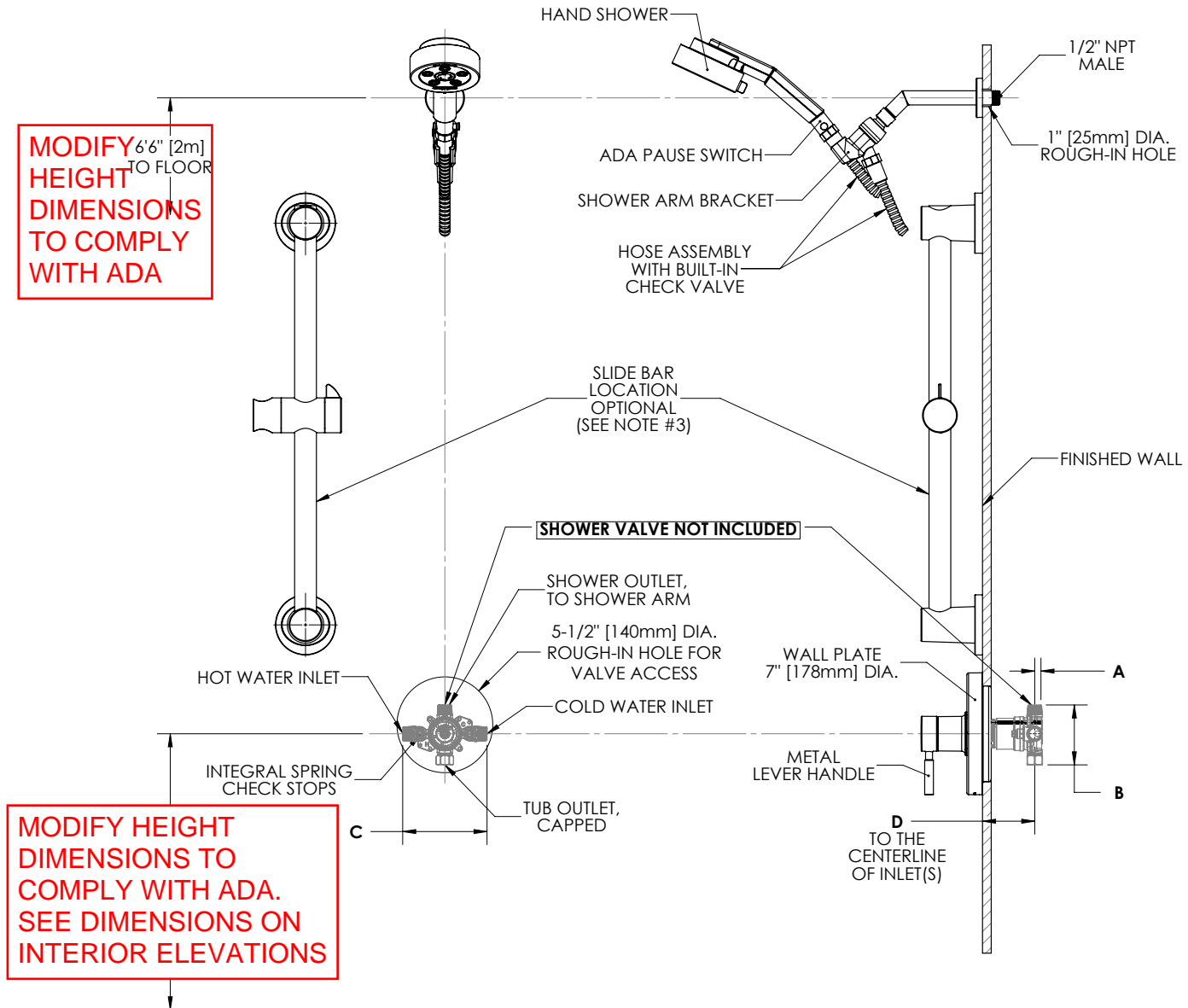
WARRANTY:Visit www.speakman.com for full product warranty information

- See Speakman.com For Warranty Information



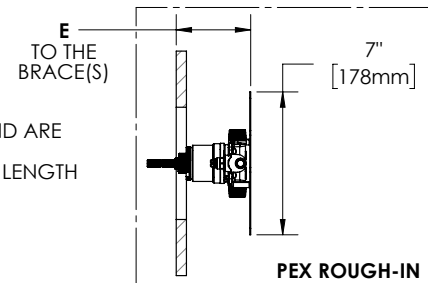
Information continues on next page

Neo® Trim and Handicap Shower System (Valve not included)

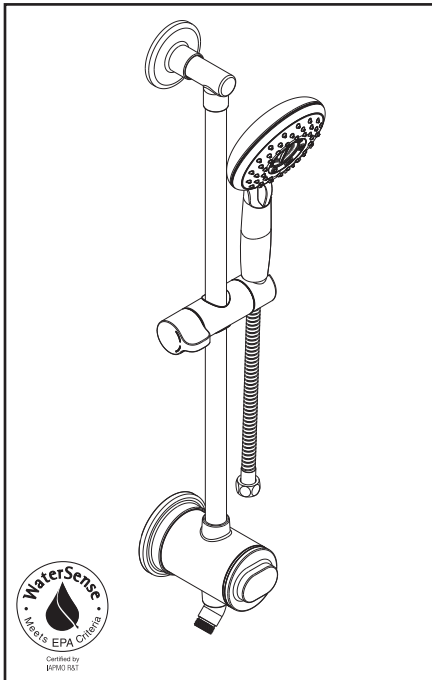


NOTES:

1. ALL DIMENSIONS ARE IN INCHES [MILLIMETERS] UNLESS OTHERWISE SPECIFIED AND ARE SUBJECT TO CHANGE WITHOUT NOTICE.
2. THE LOCATION OF THE SLIDE BAR IS OPTIONAL, BUT RESTRICTED BY THE 60" HOSE LENGTH RUNNING FROM THE SHOWER ARM BRACKET TO THE HAND SHOWER.
3. FOR ADA MOUNTING LOCATIONS CONSULT ADAAG, ANSI A117.1, OR STATE REGULATIONS.



DIMENSION	CPV-PB	CPV-T2	CPV-PB-PXC	CPV-PB-PXE	CPV-T2-PXC	CPV-T2-PXE
A	7/16" (11mm)	1/2" (12mm)	7/16" (11mm)	7/16" (11mm)	1/2" (12mm)	1/2" (12mm)
B	3-5/16" (84mm)	3-1/2" (89mm)	3-5/16" (84mm)	3-5/16" (84mm)	3-1/2" (89mm)	3-1/2" (89mm)
C	4-13/16" (123mm)	5-7/8" (150mm)	4-13/16" (123mm)	4-13/16" (123mm)	5-7/8" (150mm)	5-7/8" (150mm)
D	2-1/2" (63mm) MIN TO 3-1/2" (89mm) MAX					
E			3-1/8" (79mm) MIN TO 4-1/8" (105mm) MAX	3-1/8" (79mm) MIN TO 4-1/8" (105mm) MAX	3-3/16" (81mm) MIN TO 4-3/16" (106mm) MAX	3-3/16" (81mm) MIN TO 4-3/16" (106mm) MAX



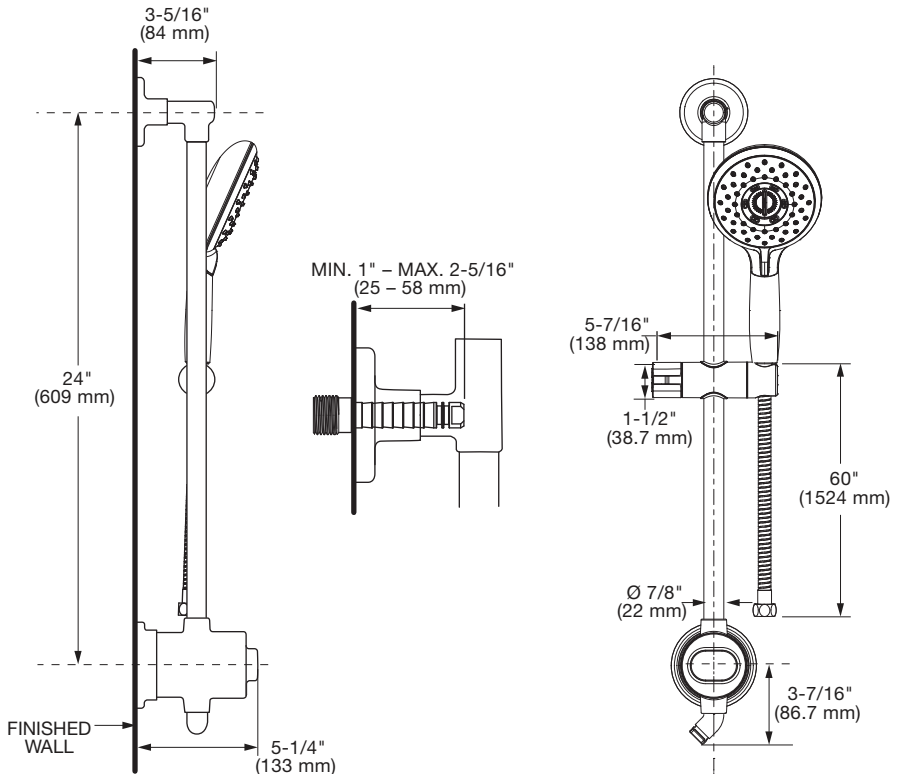
Plumb Pak (similar at McCoy's)
K760CP Slide Bar Handheld
Shower Kit, 1.8 gpm, 3 spray
function, 60 in L hose

MODEL NUMBER:

□ 9238759 Filter Shower Rail 1.8 gpm

Includes:

- Spectra™ 4 Function Hand Shower
- Slide Bar with Easy Glide Holder
- 60" Hose
- KDF Filter



GENERAL DESCRIPTION:

Complete shower system kit includes:

24" (610 mm) shower system; 60" (1524 mm) shower hose; a Spectra handheld water saving hand shower. 5" (127 mm) Quick-change KDF filter reduces chlorine in the water up to 50%. Hand shower adjusts from Drench to Sensitive to Powerwash® to Massage. Slide bar features an adjustable shower holder which can be set at any height or position along the bar and angle up to 45°. Kit includes two check valves to prevent backflow. 1.8gpm/6.8L/min. maximum flow rate.

PRODUCT FEATURES:

Water Saving: Saves 28% water usage. WaterSense® certified.

Variety of Spray Functions: Allows the user to select the spray functions best suited to their needs.

Quick-Change KDF Filter: Reduces up to 50% of chlorine for a healthier shower.

Simple Height Adjustment: Allows positioning of the personal shower anywhere along the bar.

Shower Hose: 60" hose is made of durable metal.

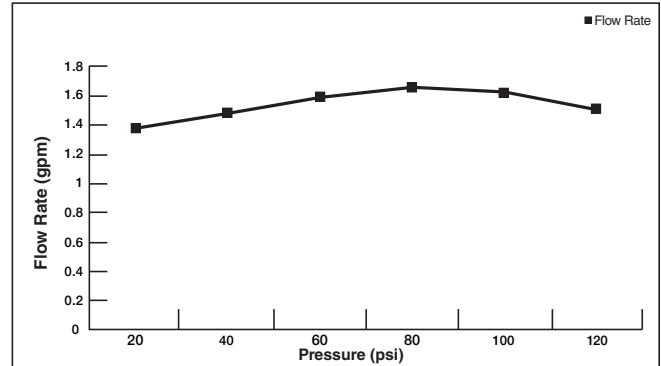
SUGGESTED SPECIFICATION

Shower system shall feature a 69" hose and hand shower. System shall have a quick-change KDF filter that reduces up to 50% of chlorine in the water. Hand Shower shall be WaterSense certified. Shower system shall have a pressure compensating control device. Kit shall include two check valves to prevent backflow. Fitting shall be American Standard Model # 9238759.____.

CODES AND STANDARDS

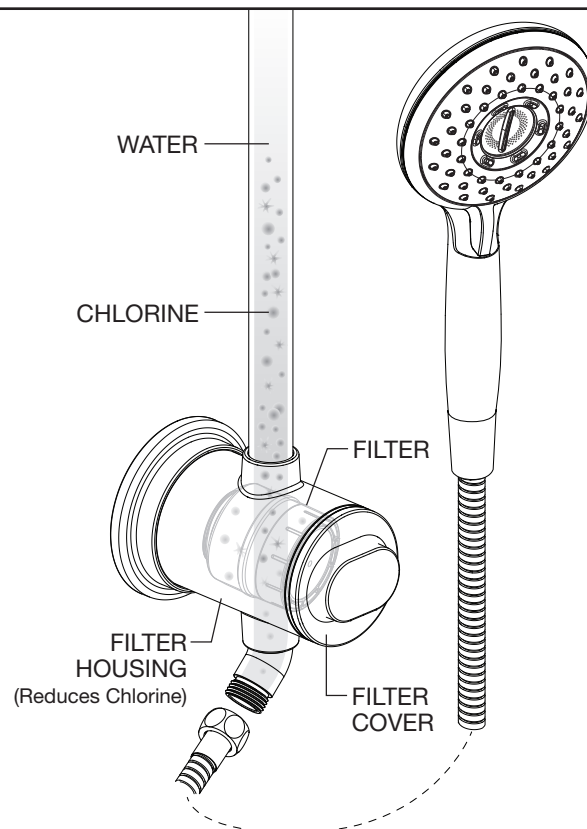
These products meet or exceed the following codes and standards:

ASME A112.18.1
CSA B125.1

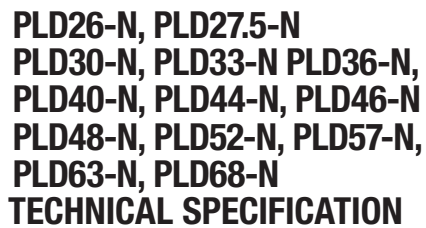


Product Number	Description	Finish	
		Polished Chrome	Brushed Nickel
		002	295
9238759	Spectra Versa™ 24" Shower System Kit. Contains Spectra™ hand shower, KDF filter, and 60" hose.		

Accessories	
FS50	Replacement Filter



PART OF **LIXIL**





PLD26-N, PLD27.5-N PLD30-N, PLD33-N, PLD36-N, PLD40-N, PLD44-N, PLD46-N PLD48-N, PLD52-N, PLD57-N, PLD63-N, PLD68-N TECHNICAL SPECIFICATION

Job Name _____	Item # _____
Location _____	
Engineer _____	Contractor _____
PO # _____	Tag _____
Representative _____	

DESCRIPTION

- 18 Gauge 316L Stainless Steel
- Key feature of the drain body is a fully sloped trough that prevents standing water and solids being deposited in the trough
- 2" I.D. schedule 10 stainless steel down spout waste outlet
- Length adjustability of drain trough with use of trough extensions to accommodate finished openings from 26.25" - 72". QuickDrain USA recommends the drain cover extend the entire length of the shower pan (wall to wall or wall to curb)
- Height adjustability of drain cover with use of spacers for different thicknesses of finish material from 3/8" to 3/4". Custom spacers are available for finish material thicknesses from 1" - 2 1/2"
- Custom drain lengths available from 10"-100". Side outlets, Commercial outlets, Multiple outlets and Resinous drains.
- For more information on our custom drains please visit our website: www.quickdrainusa.com
- Available with tamper proof cover and screws.

OPTIONAL ACCESSORIES

Drain Accessories:

- Leveling or Placement Brackets (2)

Shower Pan Accessories:

- Quick Slopes, Flat Panels, Curb Forms

Liquid Waterproofing Accessories:

- Curb Covers

DRAIN BODY INCLUDES

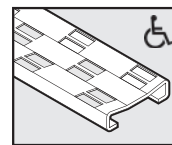
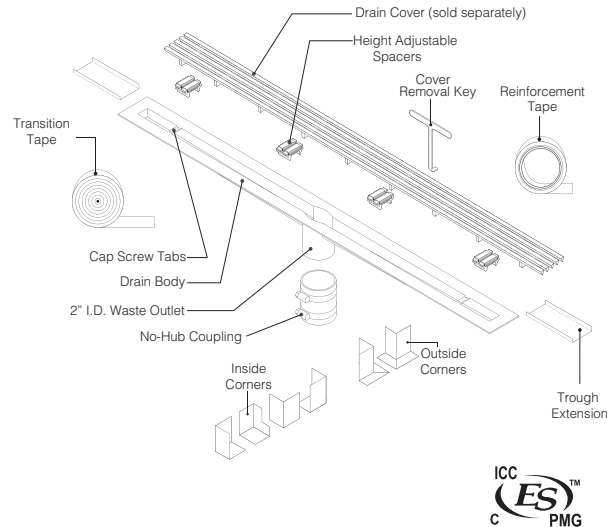
- Height adjustable spacers*
- Trough Extensions (2)
- No-hub coupling (1)
- Cover removal key (2)
- Transition Tape (1)
- Inside Corners (4)
- Outside Corners (2)
- Reinforcement Tape (1)

*See chart for part quantities of different drain lengths

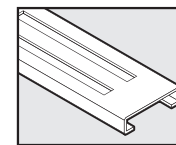
APPROVALS AND LISTINGS

Before installing QuickDrain USA system, check with your local building department/plumbing inspector to ensure compliance with the local building codes. QuickDrain USA LLC is not responsible for any conflicts with local building codes. QuickDrain USA LLC is not responsible for improper installation of any part of the assembly or the waterproofing membrane. Dimensions are subject to manufacturer's tolerance and can change without notice.

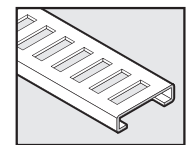
PROLINE DRAIN ASSEMBLY



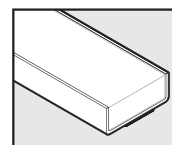
Cosmo



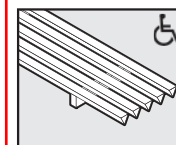
Horizontal*



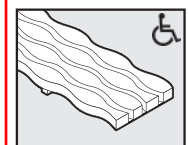
Vertical*



TileIn*



Lines



Stream

*Not recommended for curbless entry showers

MODEL NUMBER	HEIGHT ADJUSTABLE SPACERS	COVER LENGTH
PLD26-N, PLD27.5-N	4	COVER32
PLD30-N, PLD33-N, PLD36-N	4	COVER40
PLD40-N, PLD44-N, PLD46-N	6	COVER48
PLD48-N, PLD52-N	6	COVER56
PLD57-N	8	COVER64
PLD63-N, PLD68-N	8	COVER72

REQUIRED PART (NOT INCLUDED) - DRAIN COVER

- Available in the designs below and in these lengths – 32", 40", 48", 56", 64", and 72"

Get free delivery on orders over \$50 with code **FREEDELIVERY**. [See details.](#)



My Store: **Alpine**
Open Today 7am-7pm

Home / Heating, Cooling, & Ventilation / Fans / Bathroom Fans & Ventilation
/ Bath Fans with Lights & Heaters



Broan

PowerHeat Series BHFLED80 Heater Exhaust Fan, 12 A, 120 V, 80 cfm Air, 1.5 sones, LED Lamp, Infrared/Radiant

Sku: 37100116

\$179.00

PayPal Pay in 4 interest-free payments of \$44.75. [Learn more](#)

1

Add to Cart

2 Available at **Alpine**
Location: **Aisle 22**

Description

Help provide comfort and functionality to your bathroom with the addition of the Broan BHFLED80 exhaust bath fan with heater and integrated and dimmable LED lighting with CCT color control. This 80 cfm provides powerful airflow along with a stylish brighter white fan cover matching any decor. Operating at just 1.5 sones, this solution offers quiet performance with enough sound to know your fan is on.

Features

- 80 cfm, powerful ventilation to remove moisture and reduce the risk of mould or mildew in most full baths
- 1.5 sones for quiet performance, enough sound to know your fan is on
- 1300 W heater for instant heat when you want it
- Integrated dimmable LED with color adjustable CCT lighting
- LED dimmable lighting may be used as a nightlight
- Modern design matches an array of bathroom decor
- Fits in 2 x 6 in ceiling construction
- Rugged galvanized steel housing stands up to moisture

Specifications

Voltage Rating	120
Current Rating	12
Wattage Rating	27
Number of Phases	1
Air Flow Rate	80
Coverage Area	75
Discharge Type	Horizontally
Number of Speeds	1
Heating Element	Heat Lamp

Heat Technology	Infrared/Radiant
Lamp Type	LED
Light Color	Bright White/Daylight/Warm White
Grille Length	16-1/4
Grille Width	9-3/4
Duct Size	4 in Dia
Grille Material	Plastic
Housing Material	Steel
Color	Bright White
Sound Level	1.5
Length	14-1/4
Width	8-1/4
Height	5-3/4

Get free delivery on orders over \$50 with code **FREEDELIVERY**. [See details.](#)



My Store: **Alpine**
Open Today 7am-7pm

[Home](#) / [Lighting & Ceiling Fans](#) / [Light Fixtures](#) / [Indoor Household Light Fixtures](#)
/ [Wall-Mount Fixtures](#)



Westinghouse

Sylvestre Series 6227900 Wall Fixture, 120 V, 3-Lamp, Incandescent, LED Lamp, Metal Fixture

Sku: 3048683-052303-21

\$54.74

PayPal Pay in 4 interest-free payments of \$13.69. [Learn more](#)

1

Add to Cart

6 Available at **SHIP TO STORE**

Description

With a sleek design, the Sylvestre three light wall fixture brings bright lighting and modern flair to your home. The fixture creates a sophisticated ambiance with its cylindrical frosted seeded glass shades and eye catching brushed nickel finish. Three evenly spaced lights fill your room with vibrant, enveloping illumination. You can position the fixture up or down to suit your needs.


Features

- Frosted seeded glass

Specifications

Voltage Rating	120
Lamp Wattage	60
Number of Lamps	3
Lamp Type	Incandescent, LED
Lamp Base	E26 Medium
Bulb Shape	A19
Shade Type	Cylinder
Shade Material	Glass
Shade Color	White
Fixture Material	Metal
Fixture Finish	Brushed Nickel
Dimensions	8-1/4 in H x 15-3/4 in W
Includes	Mounting Hardware

Get free delivery on orders over \$50 with code **FREEDELIVERY**. [See details.](#)



My Store: **Alpine** 
Open Today 7am-7pm

[Home](#) / [Lighting & Ceiling Fans](#) / [Light Fixtures](#) / [Recessed Lighting](#) / [Recessed Lighting Trims](#)



Eaton Lighting

RE-6150WH Shower Lens/Trim, Glass Lens, Plastic Body, White

Sku: 21502046

\$19.99

 **PayPal** Pay in 4 interest-free payments on purchases of \$30-\$1,500. [Learn more](#)

2 Available at **Alpine**

Location: **Aisle 42**

Tools & Accessories Options : Eaton RE-6150WH 6 In



Eaton RE-6150WH 6 In

Description

Halo E-Series 6 in white shower trim with frosted glass lens. Wet location-rated for use with E7RICAT and E7ICAT as well as Halo H7 series. UL listed.

Specifications

Lens Material	Glass
Body Material	Plastic
Color	White
Diameter	6
Suitable for	E7RICAT and E7ICAT as Well as Halo H7 Series Light