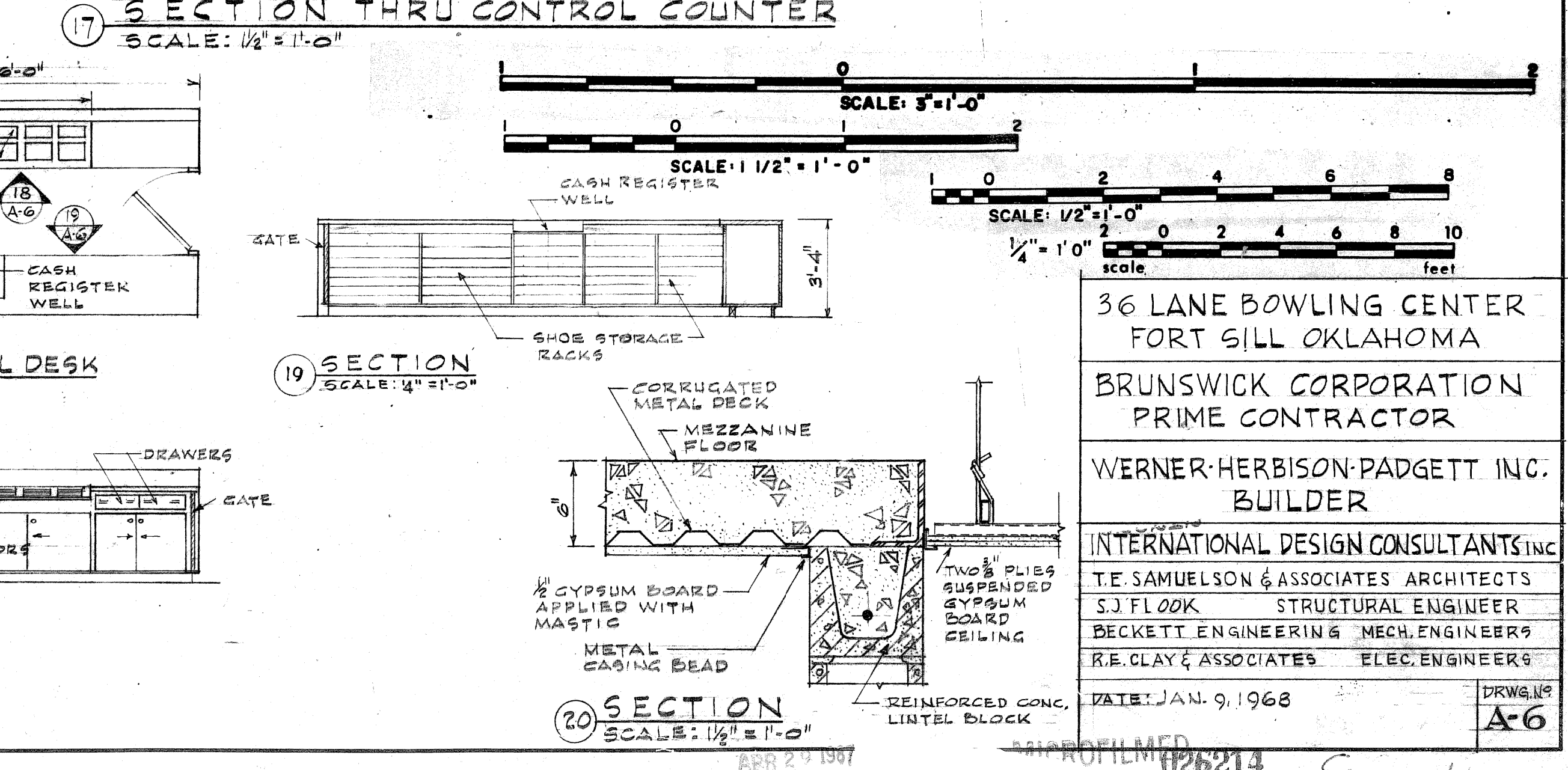
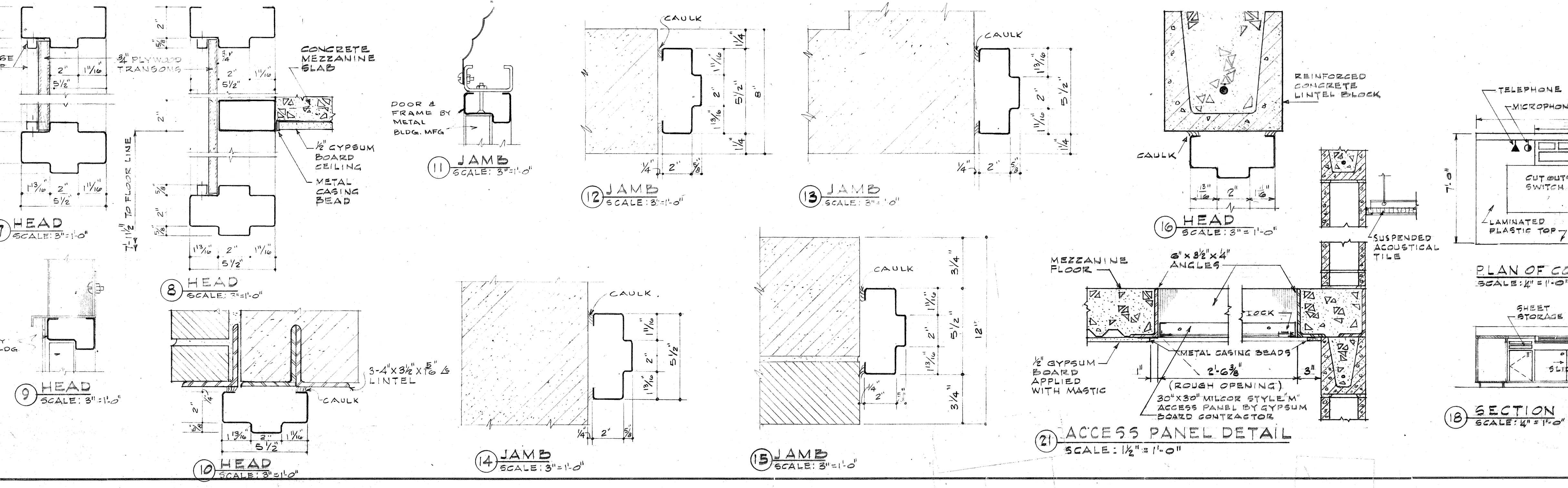
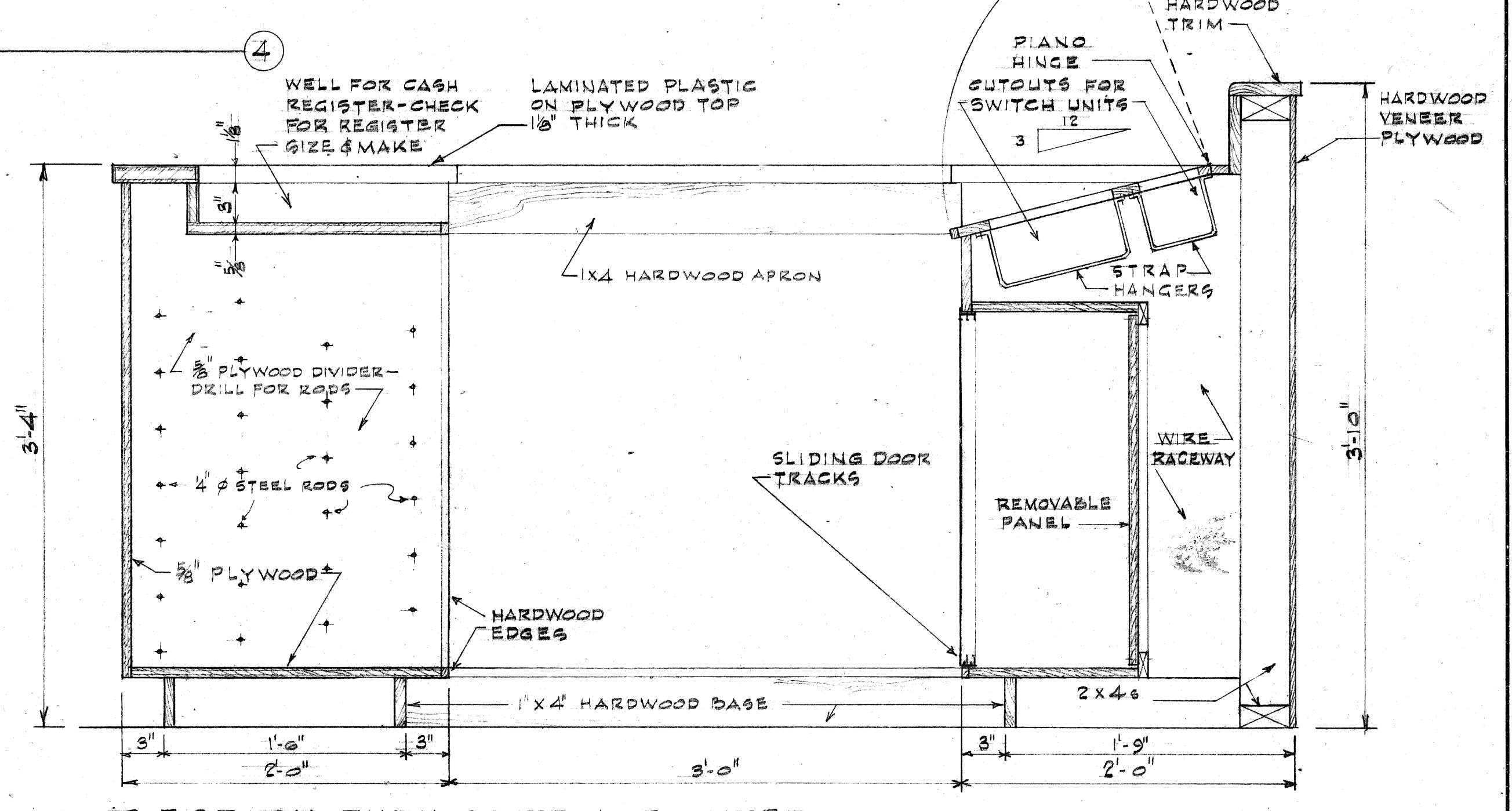
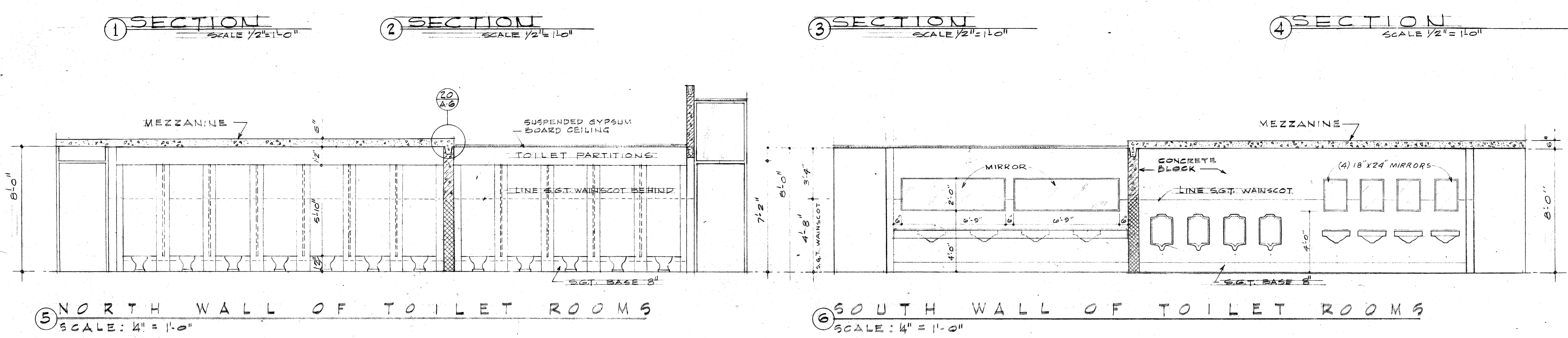
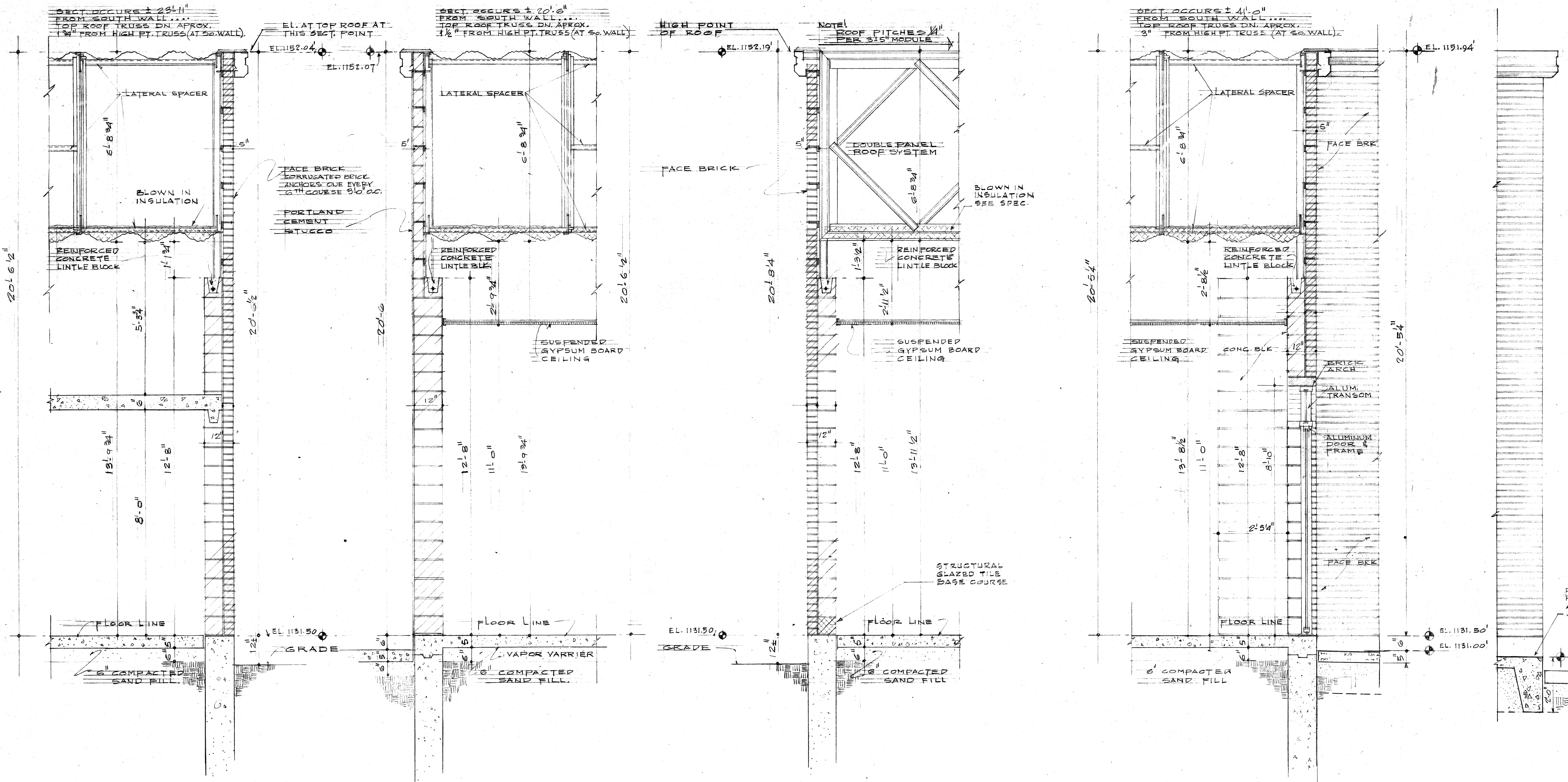
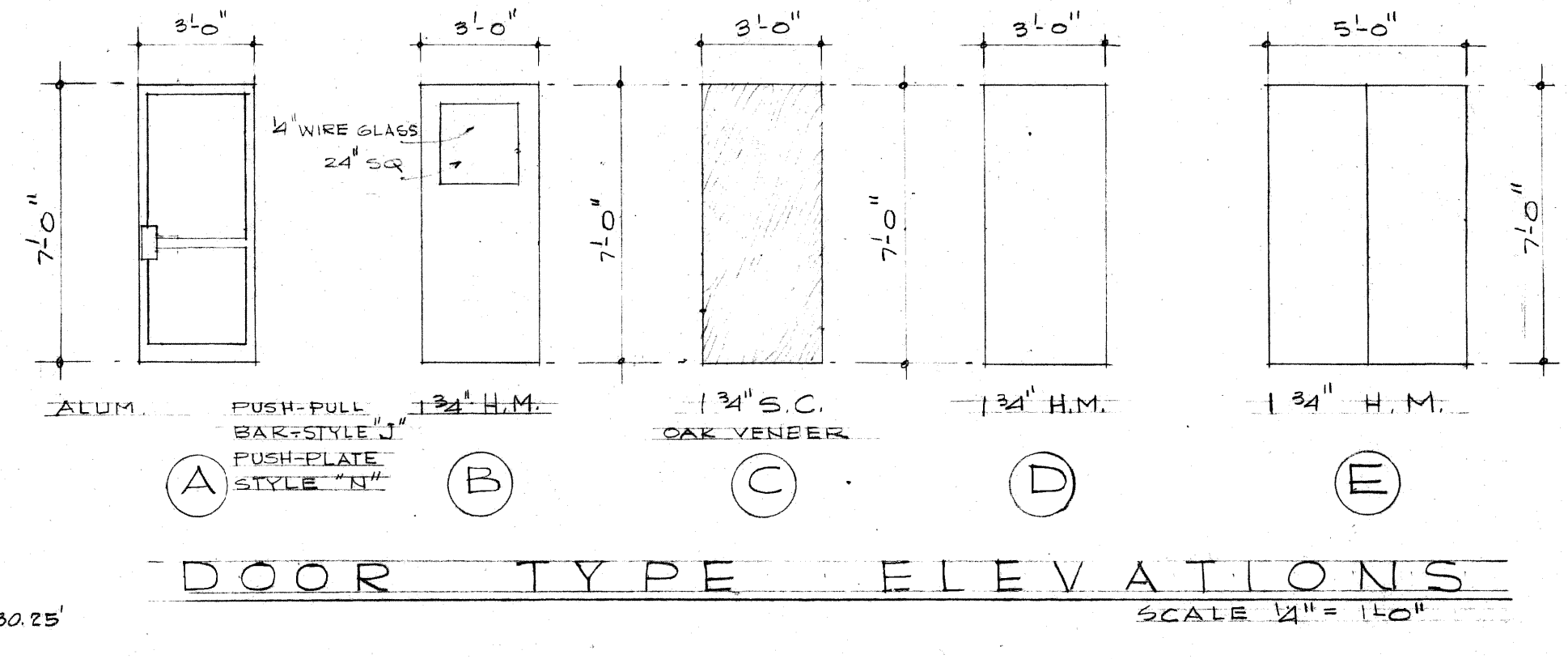


36 LANE BOWLING CENTER FORT GILL, OKLAHOMA	
BRUNSWICK CORPORATION PRIME CONTRACTOR	
WERNER-HERBISON-PADGETT INC. BUILDER	
INTERNATIONAL DESIGN CONSULTANTS INC.	
T.E. SAMUELSON & ASSOCIATES ARCHITECTS	S.J. FLOOK STRUCTURAL ENGINEER
BECKETT ENGINEERING MECH. ENGINEERS	K.E. CLAY & ASSOCIATES ELFC. ENGINEERS
DATE: JAN. 9, 1968	
DRAWING NO. A-5	



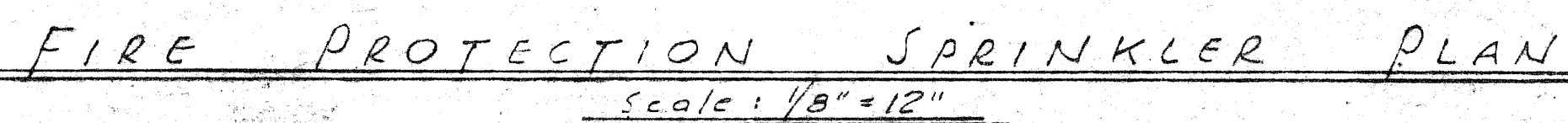
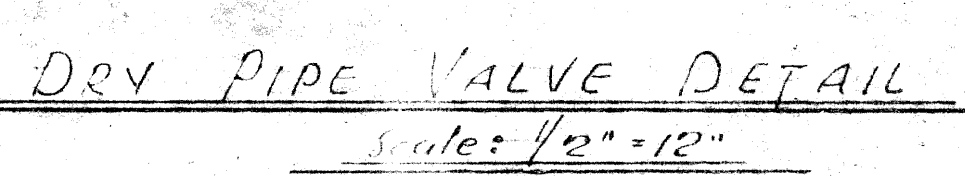
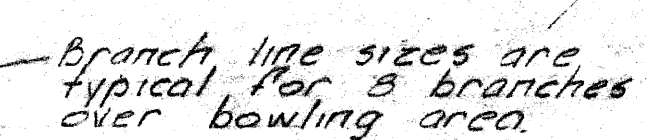
SCHEDULE OF DOORS & EQUIPMENT										
DOOR No.	SIZE	TYPE	MATERIAL	FINISH	HEAD DETAIL	JAMB DETAIL	HARDWARE SET No.	REMARKS		
1	5'-0" x 8'-8"	E	H.M.	PAINT	9	11	6	CHANGED TO DBL LEAF 3/26/68		
2	3'-0" x 7'-0"	C	S.C.WD.	ST. & V.	10	12	3			
3	3'-0" x 7'-0"	C	S.C.WD.	ST. & V.	10	12	3			
4	5'-0" x 8'-8"	E	H.M.	ENAMEL	9	11	4			
5	5'-0" x 8'-8"	E	H.M.	ENAMEL	9	11	4	DELETED 3/26/68		
6	3'-0" x 7'-0"	A	ALUM.	ANODIZED ALUM.	SPEC.	SPEC.	1	SEE DETAILS ON SHEET A-5		
7	3'-0" x 7'-0"	A	ALUM.	ANODIZED ALUM.	SPEC.	SPEC.	1	SEE DETAILS ON SHEET A-5		
8	3'-0" x 7'-0"	E	H.M.	PAINT	10	12	5			
9	3'-0" x 7'-0"	C	S.C.WD.	ST. & V.	8	14	9			
10	3'-0" x 7'-0"	C	S.C.WD.	ST. & V.	7	14	9			
11	3'-0" x 7'-0"	A	ALUM.	ANODIZED	SPEC.	SPEC.	2	SEE DETAILS ON SHEET A-5		
12	3'-0" x 7'-0"	A	ALUM.	ANODIZED	SPEC.	SPEC.	2	SEE DETAILS ON SHEET A-5		
13	3'-0" x 7'-0"	A	ALUM.	ANODIZED	SPEC.	SPEC.	1	SEE DETAILS ON SHEET A-5		
14	3'-0" x 7'-0"	A	ALUM.	ANODIZED	SPEC.	SPEC.	1	SEE DETAILS ON SHEET A-5		
15	3'-0" x 7'-0"	D	H.M.	PAINT	10	15	6			
16	3'-0" x 7'-0"	D	H.M.	ENAMEL	7	12 & 14	3			
17	3'-0" x 7'-0"	C	S.C.WD.	ST. & V.	8	12 & 15	8			
18	3'-0" x 7'-0"	C	S.C.WD.	ST. & V.	8	12	7			
19	3'-0" x 7'-0"	C	S.C.WD.	ST. & V.	7	12 & 15	8			
20	3'-0" x 7'-0"	C	S.C.WD.	ST. & V.	7	12 & 14	8			
21	3'-0" x 7'-0"	C	S.C.WD.	ST. & V.	7	12 & 13	10			
22	3'-0" x 7'-0"	C	S.C.WD.	ST. & V.	7	12	3			
23	3'-0" x 7'-0"	C	S.C.WD.	ST. & V.	7	12	10			
24	3'-0" x 7'-0"	C	S.C.WD.	ST. & V.	7	12	3			

EXIT DOORS ONLY



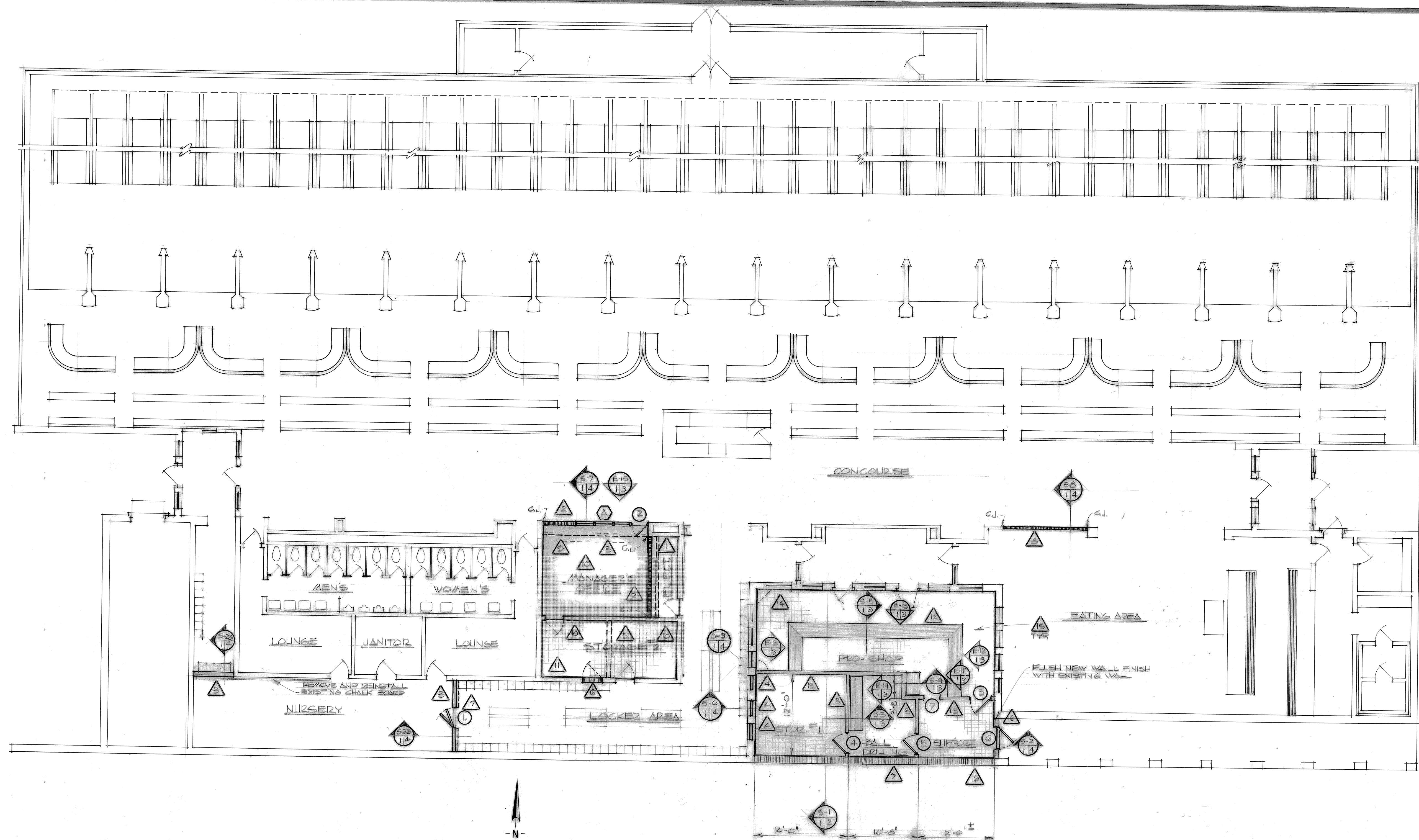
36 LANE BOWLING CENTER  
FORT GILL OKLAHOMA  
BRUNSWICK CORPORATION  
PRIME CONTRACTOR  
WERNER-HERBISON-PADGETT INC.  
BUILDER  
INTERNATIONAL DESIGN CONSULTANTS INC.  
T.E. SAMUELSON & ASSOCIATES ARCHITECTS  
S.J. FLOOK STRUCTURAL ENGINEER  
BECKETT ENGINEERING & MECH. ENGINEERS  
R.E. CLAY & ASSOCIATES ELEC. ENGINEERS  
DATE: JAN. 9, 1968  
DRAWN: A6





DATE: OCT. 21, 1967





LEGEND	
	NEW CONCRETE MASONRY UNITS
	NEW METAL STUD PARTITION
	NEW DISPLAY COUNTER
	NEW ONE-WAY GLASS IN METAL FRAME
	PARTITIONS TO BE REMOVED
	EXISTING BENCHES
	EXISTING LOCKERS
	NEW CARPET
	NEW VINYL ASBESTOS TILE
	NEW DOOR AND FRAME - REFER TO DOOR SCHEDULE
	NEW WINDOW - REFER TO INTERIOR ELEVATION E-15
C.J.	CONTROL JOINT

PARTIAL FLOOR PLAN, BLDG. 935  
SCALE: 1/8" = 1'-0"

GENERAL NOTES: (SCOPE OF WORK)

- △ REMOVE EXISTING STORE FRONT AND SLIDING GLASS DOOR COMPLETE. PATCH AND REPAIR CEILING AND FLOOR AS REQ'D BY DEMOLITION.
- △ CONSTRUCT NEW 6" CMU WALL. PATCH AND REPAIR CEILING AS REQ'D BY NEW CONSTRUCTION.
- △ REMOVE EXISTING PARTITIONS AND CONSTRUCT NEW PARTITION AS DETAILED.
- △ REMOVE EXISTING WINDOW AND FRAME. ENCLOSE EXISTING ARCHED OPENING AS DETAILED.
- △ REMOVE EXISTING CMU WALL. PATCH AND REPAIR FLOOR, CEILING AND WALLS AS REQ'D.
- △ REMOVE EXISTING DOOR AND FRAME. BLOCK EXISTING OPENING WITH CMU TO MATCH EXISTING CMU BASE.
- △ REMOVE EXISTING COPING FROM EXISTING WALL. REFER DETAIL FOR NEW WORK.
- △ CONSTRUCT NEW 6" THICK CMU WALL. REFER DETAILS.
- △ REMOVE EXISTING DISPLAY COUNTER.
- △ REMOVE EXISTING CARPET - REFER FINISH SCHEDULE.
- △ REMOVE AND RELOCATE EXISTING BALL DRILLING MACHINE AND DESK TO NEW BALL DRILLING ROOM.
- △ CONSTRUCT NEW DISPLAY COUNTER AS DETAILED.
- △ CONSTRUCT NEW METAL STUD PARTITIONS COMPLETE, INCLUDING DOORS AND HARDWARE. PARTITION SHALL EXTEND ABOVE CEILING AS DETAILED.
- △ CONSTRUCT T.V. SHELF - SEE DETAIL, SHEET #4.
- △ INSTALL NEW FINISHES AS SHOWN ON ROOM FINISH SCHEDULE, TYPICAL.
- △ CONSTRUCT NEW EXTERIOR WALL COMPLETE WITH DOORS AND HARDWARE AS DETAILED.
- △ REMOVE EXISTING WOOD THRESHOLD AND REPLACE WITH A NEW ALUM. THRESHOLD.

REVISION	DATE	DESCRIPTION	BY
DESIGNED BY		DEPARTMENT OF THE ARMY DIRECTORATE OF ENGINEERING AND HOUSING FORT SILL, OKLA.	
DRAWN BY		ALTERATION AND ADDITION TO BOWLING CENTER BLDG. 935	
CHECKED BY		PARTIAL FLOOR PLAN, BLDG. 935, GENERAL NOTES AND LEGEND	
APPROVED			
DEPUTY DIRECTOR		DIRECTOR	COL CE
SCALE	PROJECT NO.	INITIATION NO.	DATE
1/8"	PA02067-21P	DESIGN 22-B-C-152	02 AUG 62
			DRAWING NO.
			A-82154-1

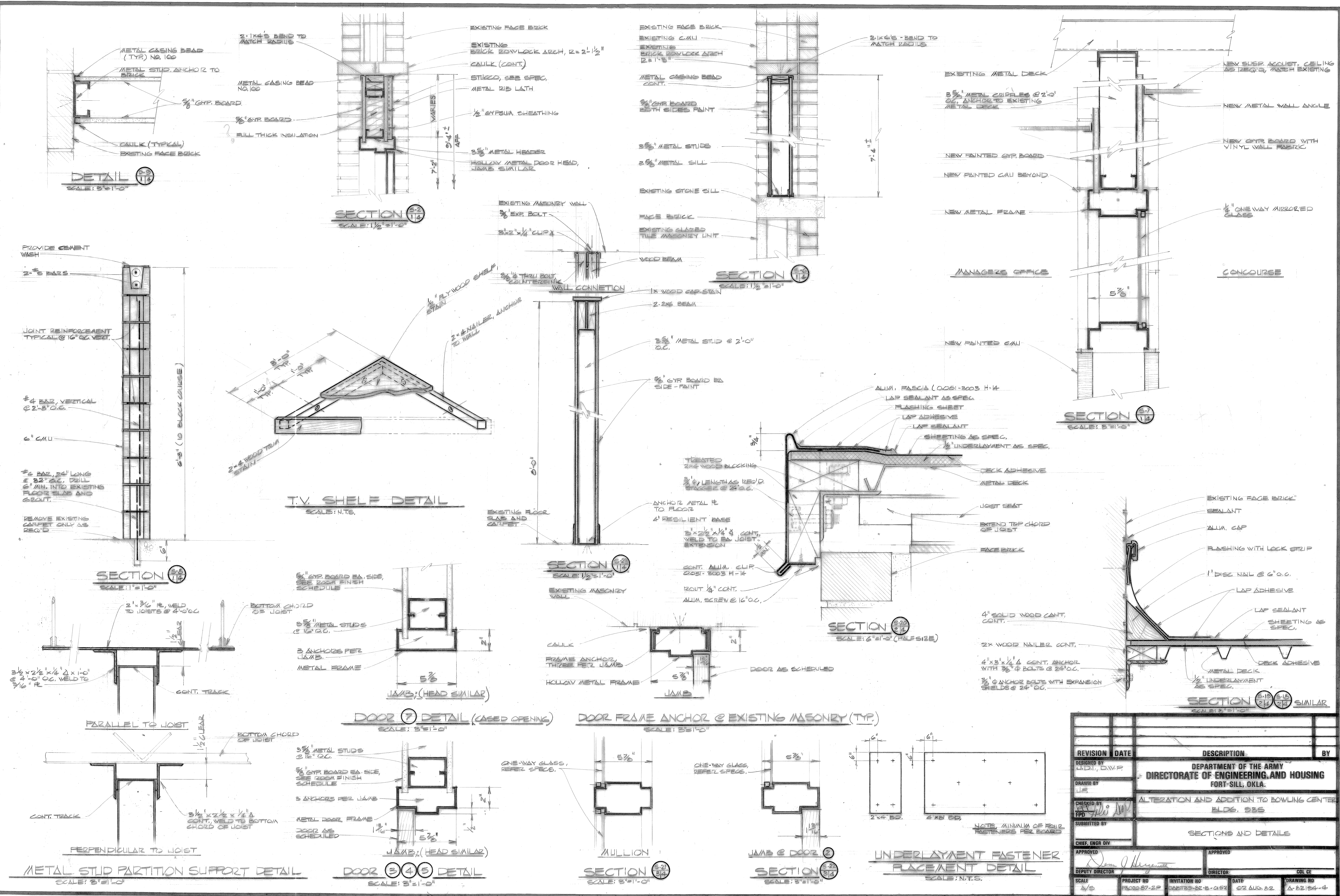










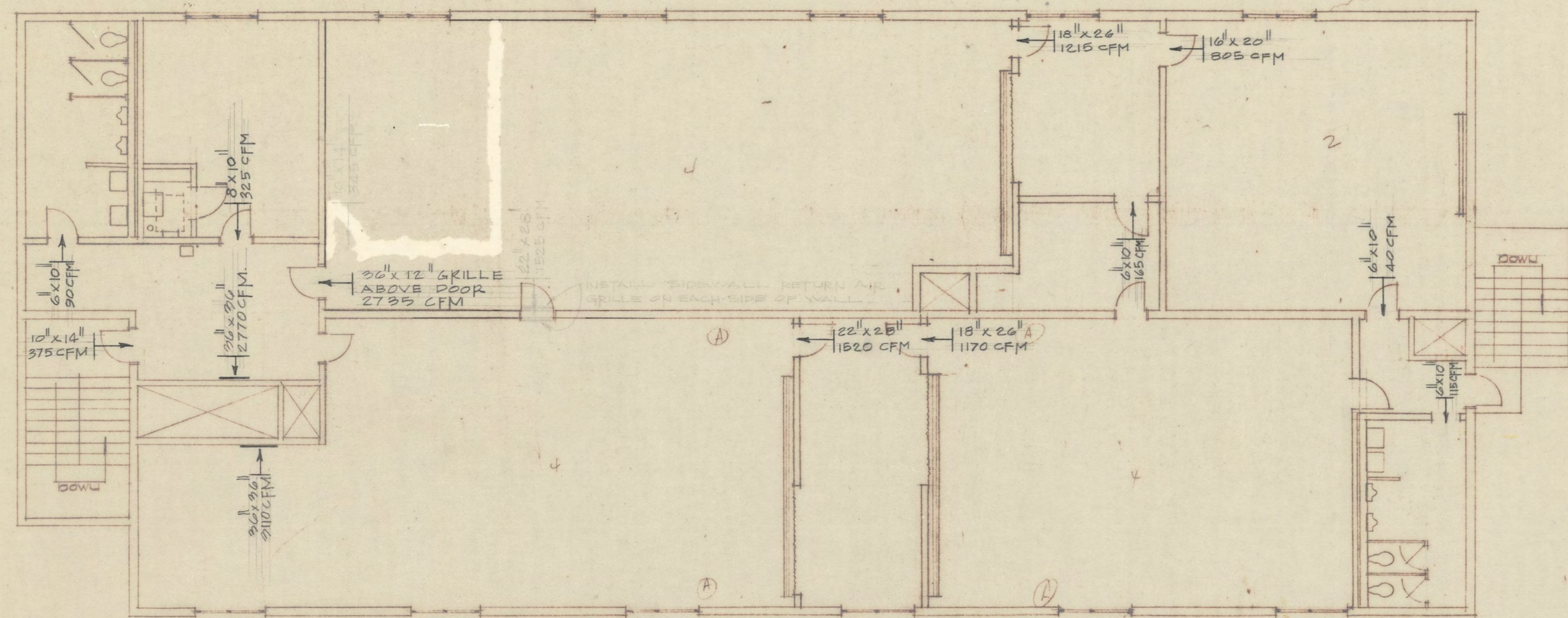


REVISION	DATE	DESCRIPTION	BY
DESIGNED BY		DIRECTORATE OF ENGINEERING AND HOUSING	
DRAWN BY		ALTERATION AND ADDITION TO BOWLING CENTER	
CHECKED BY		BLDG. 235	
SUBMITTED BY		SECTIONS AND DETAILS	
CHIEF, ENGR. DIV.			
APPROVED			
DEPUTY DIRECTOR			
SCALE	PROJECT NO.	INVESTIGATION NO.	DATE
A/S	W9124L-25-R-RR20	W9124L-25-R-RR20	02 AUG 82
			DRAWING NO.
			A-22154-4

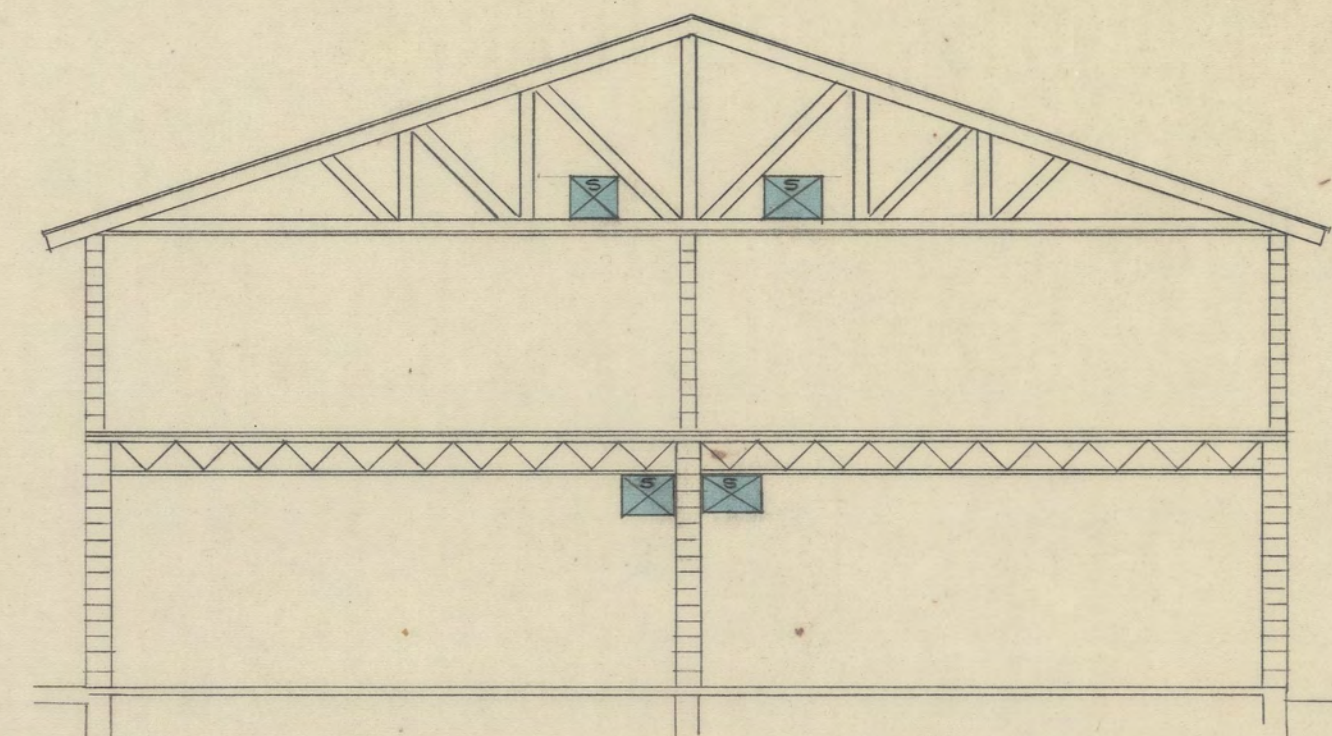


8,336 Army - Ft. Sill, Okla.

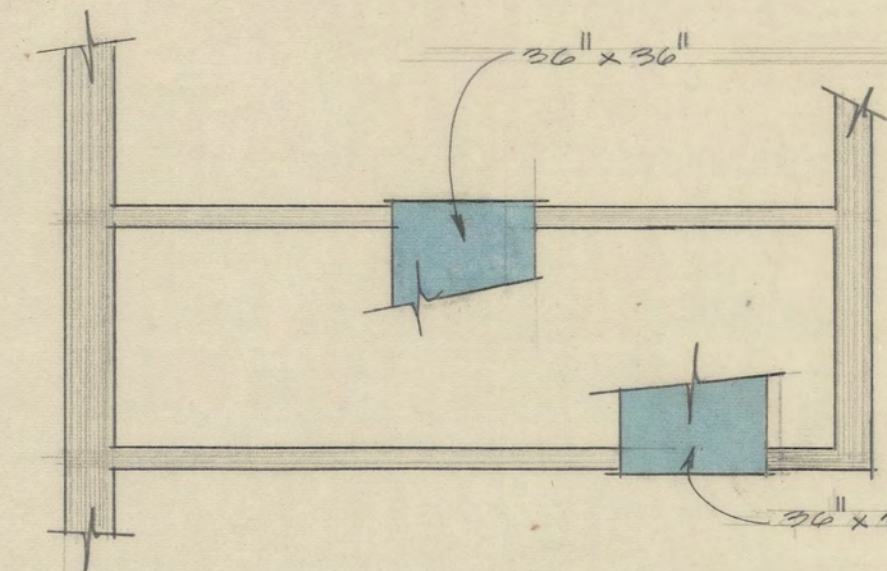




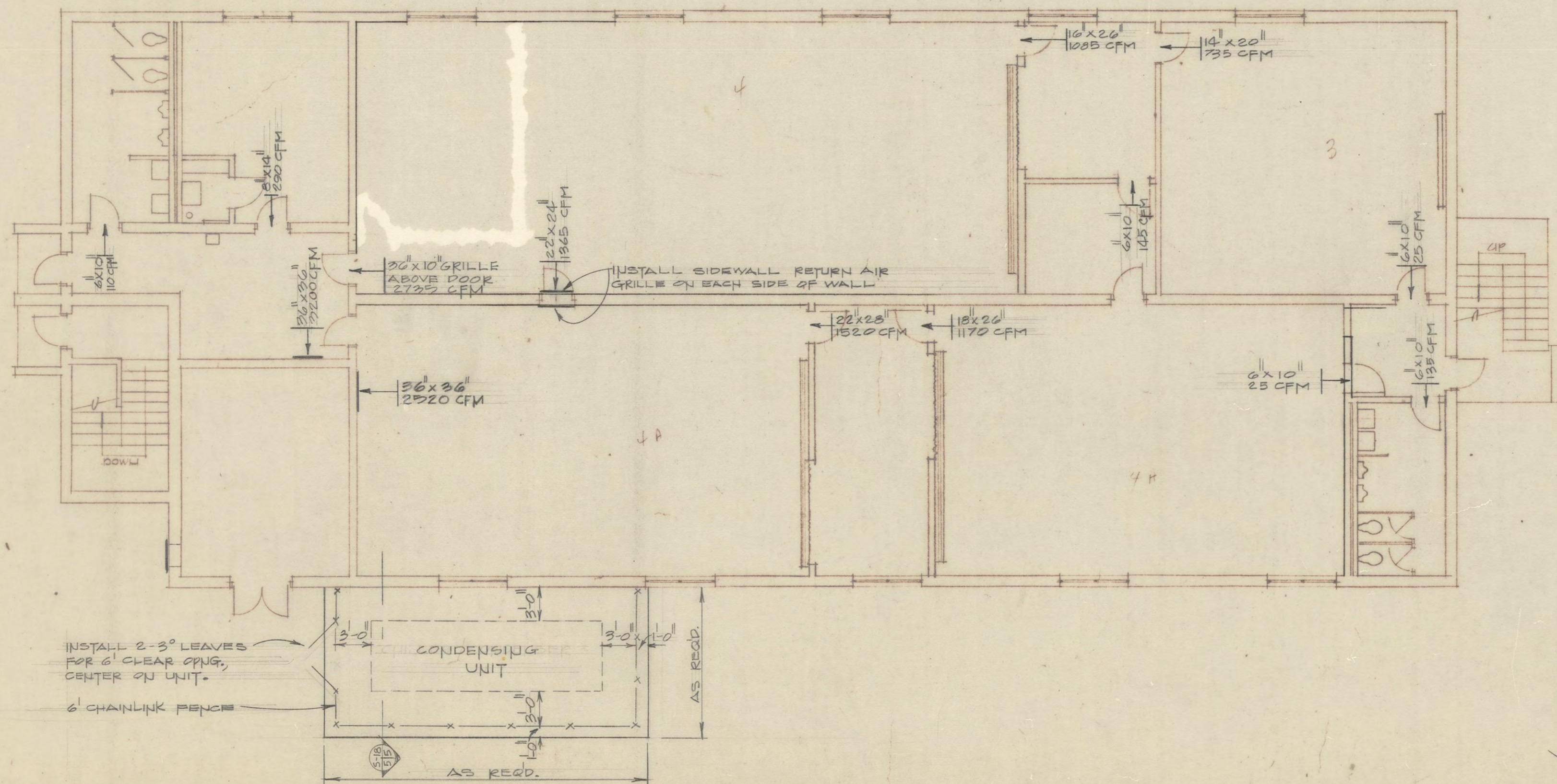
SECOND FLOOR PLAN  
SCALE: 1/8" = 1'-0"



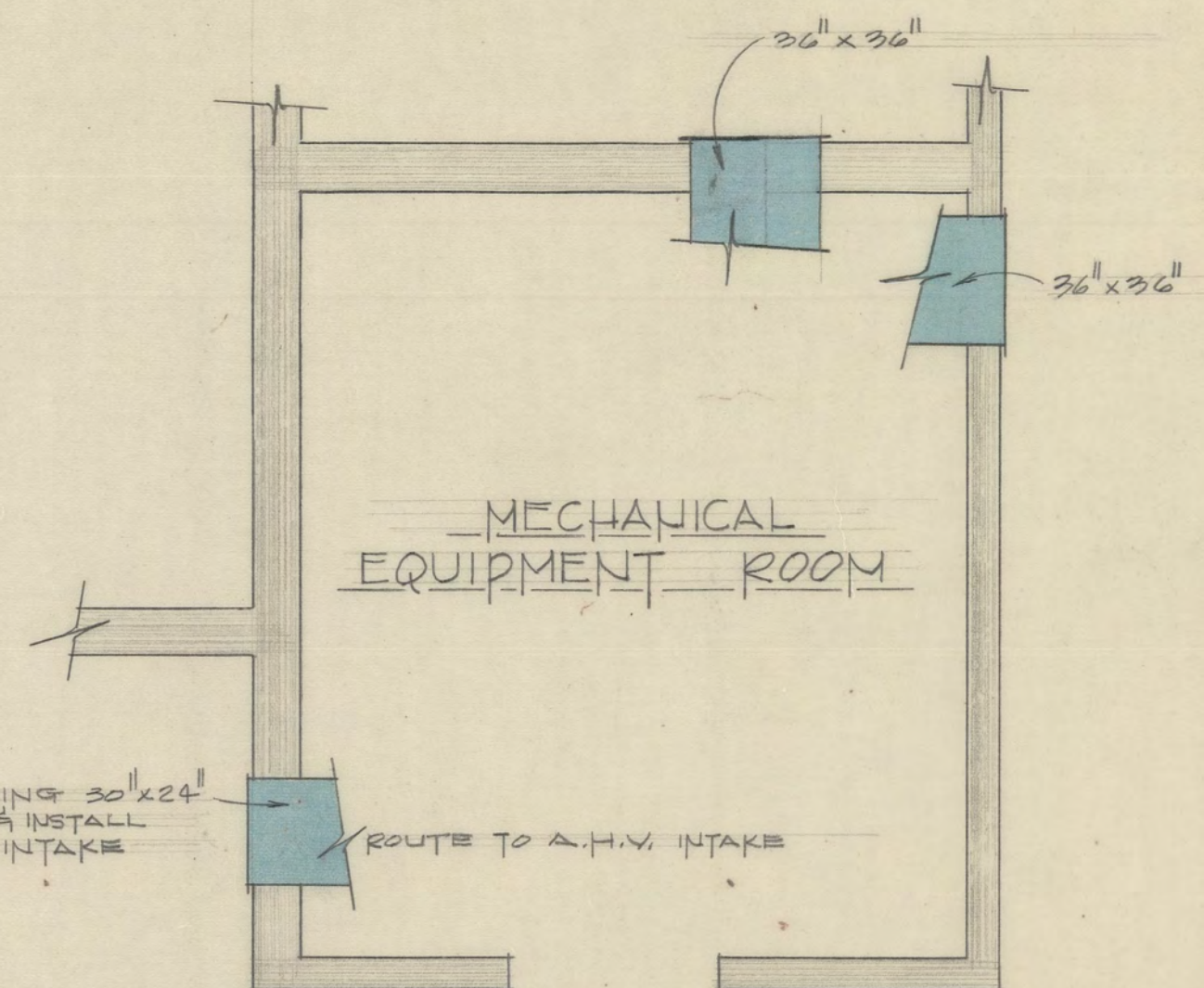
SECTION SHOWING SUPPLY AIR DUCTS (PARTIAL SECTION)  
SCALE: 1/8" = 1'-0"



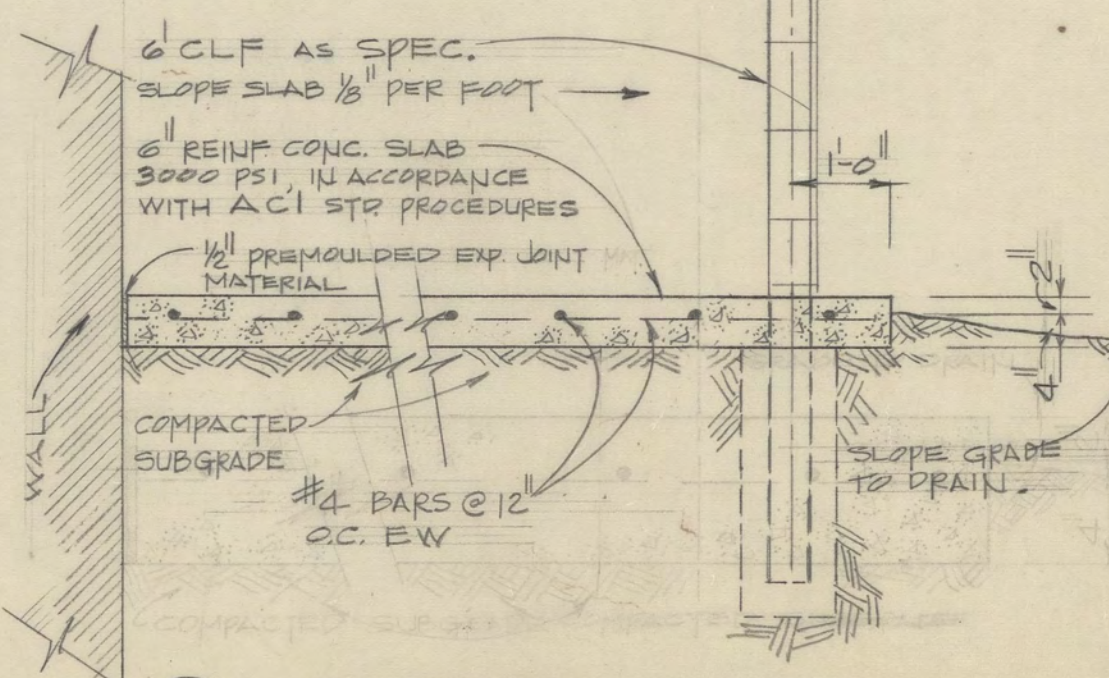
SECOND FLOOR RETURN AIR DUCT WORK PLAN  
SCALE: 1/4" = 1'-0"



FIRST FLOOR PLAN  
SCALE: 1/8" = 1'-0"



FIRST FLOOR RETURN AIR DUCT WORK PLAN  
SCALE: 1/4" = 1'-0"



SECTION  
SCALE: 1/2" = 1'-0"

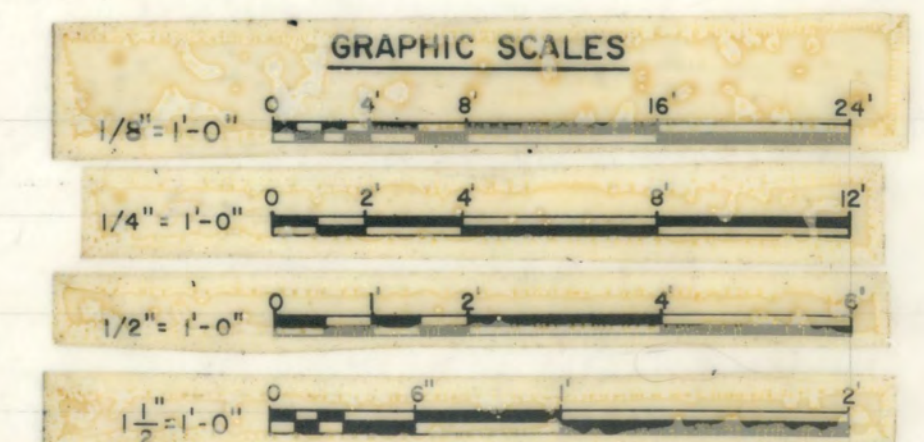
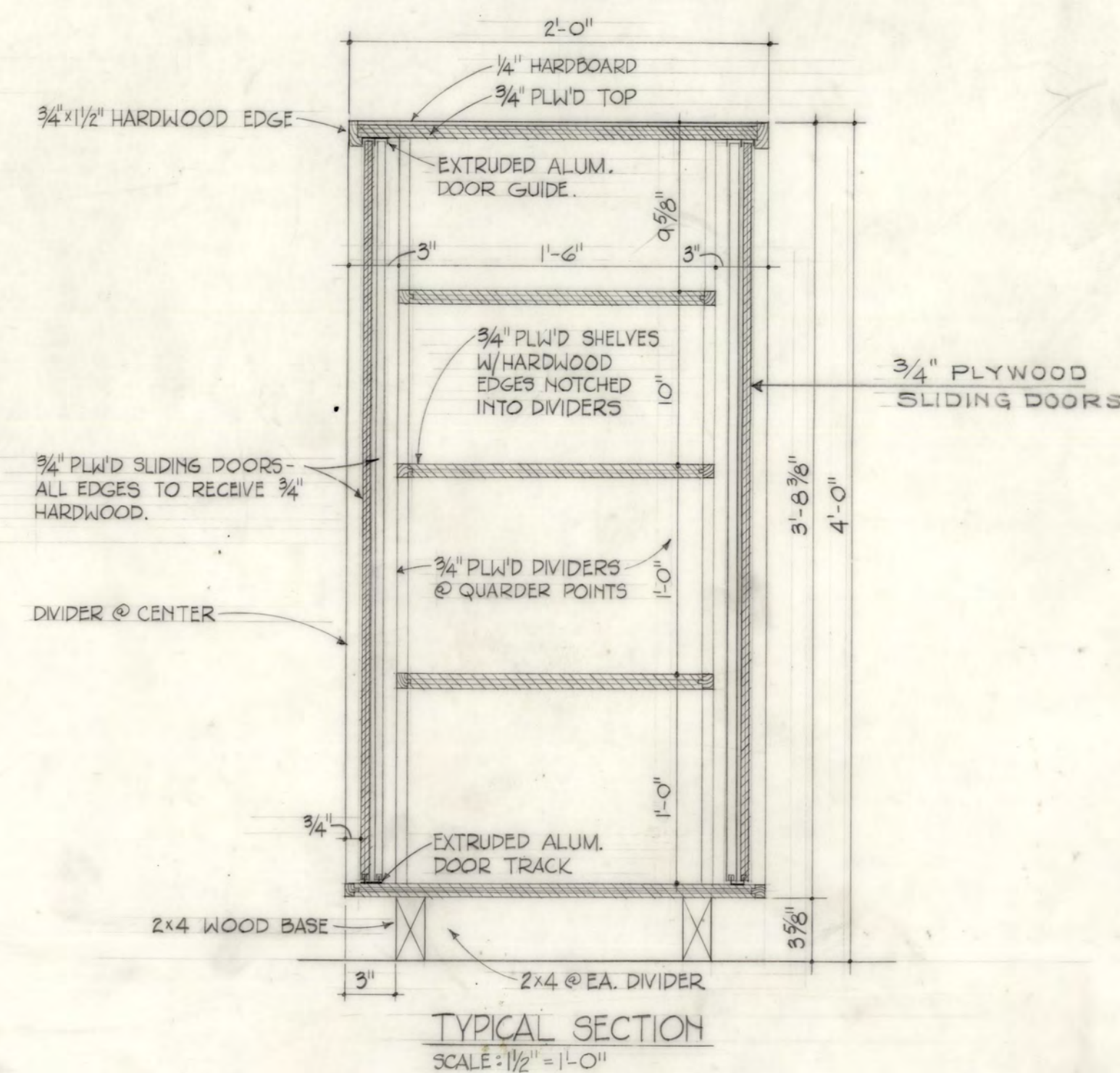
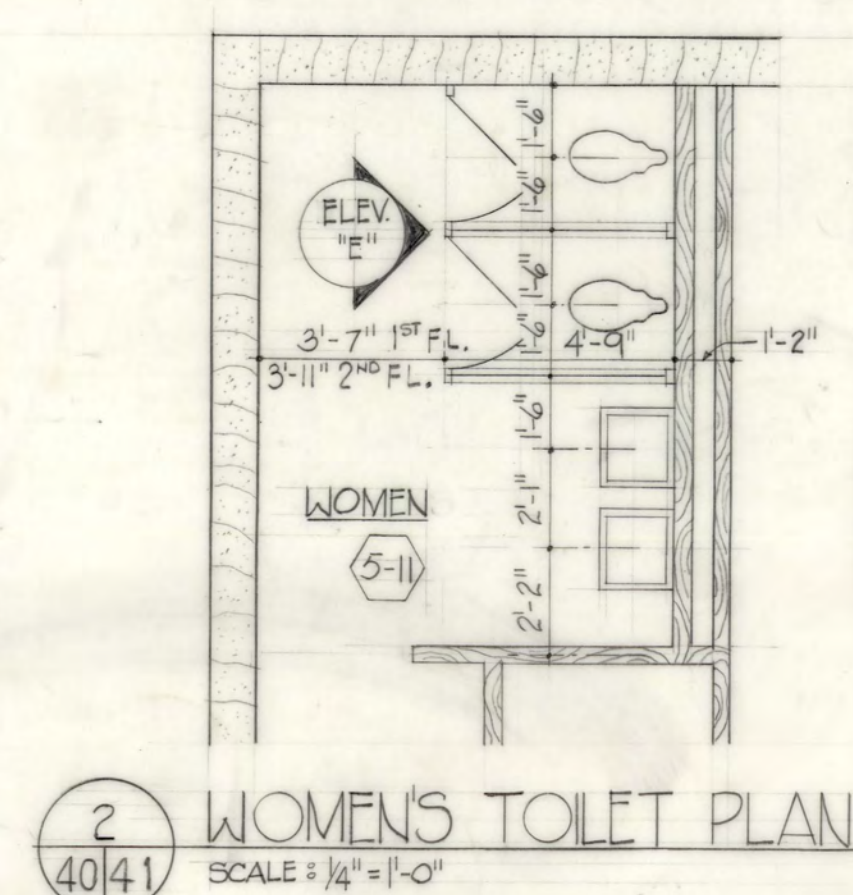
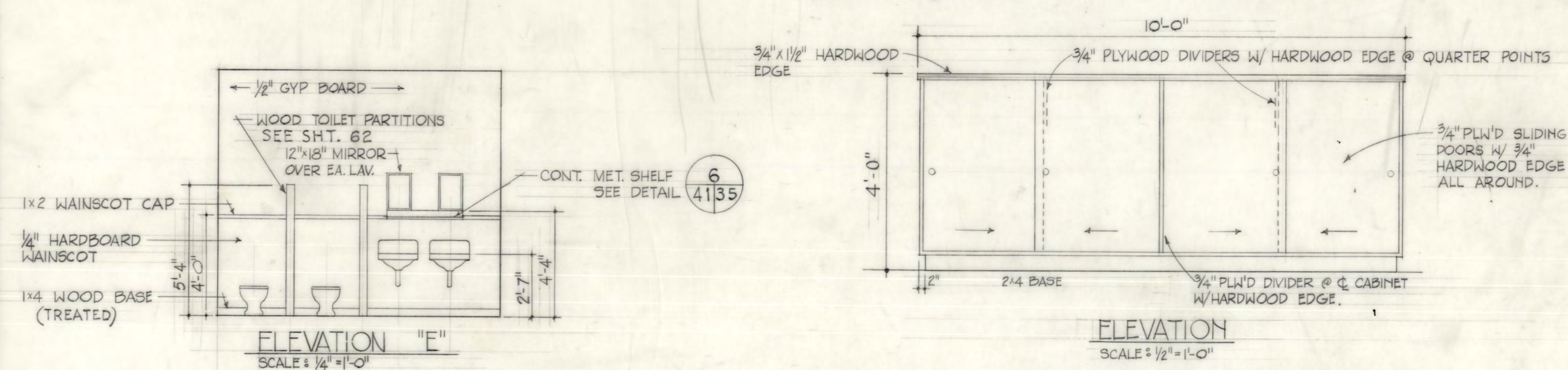
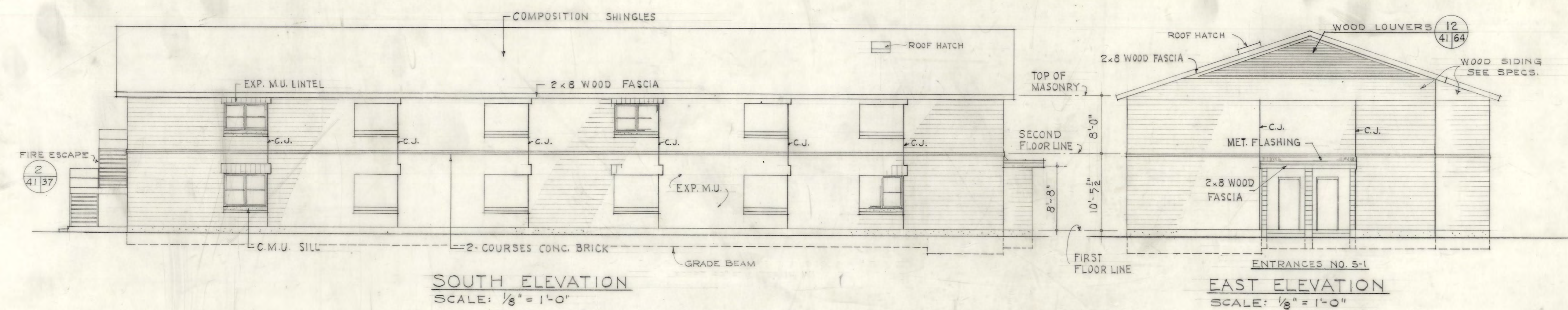
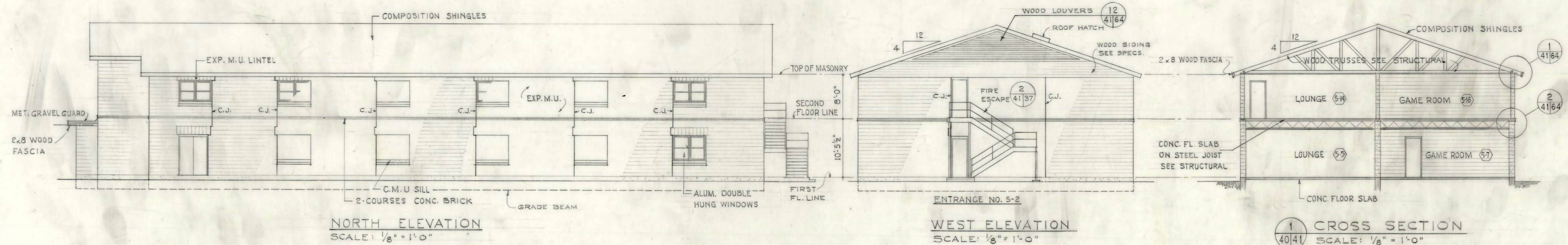
Revision	Date	Description	By
Designed By:		<b>DIRECTOR OF FACILITIES ENGINEERING</b>	
G. BOYETT		<b>FORT SILL, OKLAHOMA</b>	
Drawn By:		<b>ALTERATIONS TO BUILDING 2605</b>	
L. GORMEI		<b>FOR</b>	
Checked By:		<b>N.C.O. ACADEMY</b>	
Submitted By:		<b>R.A. PLANS; CHILLER FOUNDATION &amp; FENCE</b>	
CHIEF ENGR. OFFICE		<b>PLAN &amp; SECTION; S.A. DUCT SECTION.</b>	
Approved:		Approved:	
DEPUTY DIRECTOR		DIRECTOR	
SCALE: A/S	PR NUMBER	DATE	PLAN NUMBER
	20064	11 FEB. 72	A-7234-5

010504

MAR 24 1987

MICROFILMED



[illegible]

NOTE:  
All operations performed in accomplishing this work shall be done in accordance with the applicable provisions of the *Code of Federal Regulations*, 49 CFR, 191.11.

### DRAWING OF WORK AS BUILT

DISTRICT FILE NO. **FS-BG-14/12**

PLATE  
41