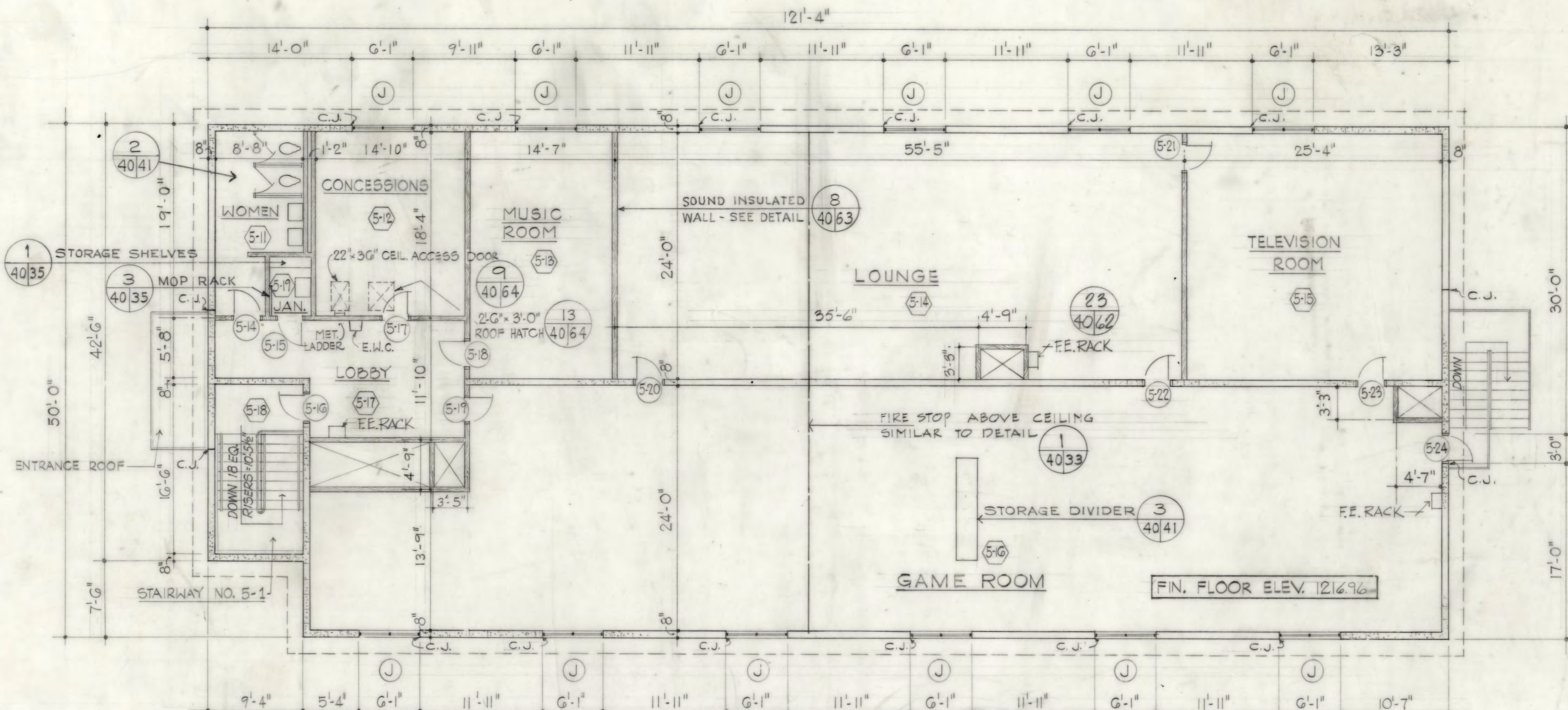


ROOF PLAN
SCALE: 1" = 20'-0"

COLOR SCHEME SCHEDULE					
DESIGNATION	FLOOR	BASE	WAINSCOT	WALLS	CEILING
A	—	36357	36555	31670	37855
B	—	36555	—	33695	37855
C	—	36555	—	34491	37855
D	—	36555	—	31670	37855
E	—	36357	—	34491	37855
F	—	36357	—	36555	37855

NOTE: NUMBERS INDICATE COLORS SELECTED FROM
FEDERAL SPECIFICATION STD. NO. 595

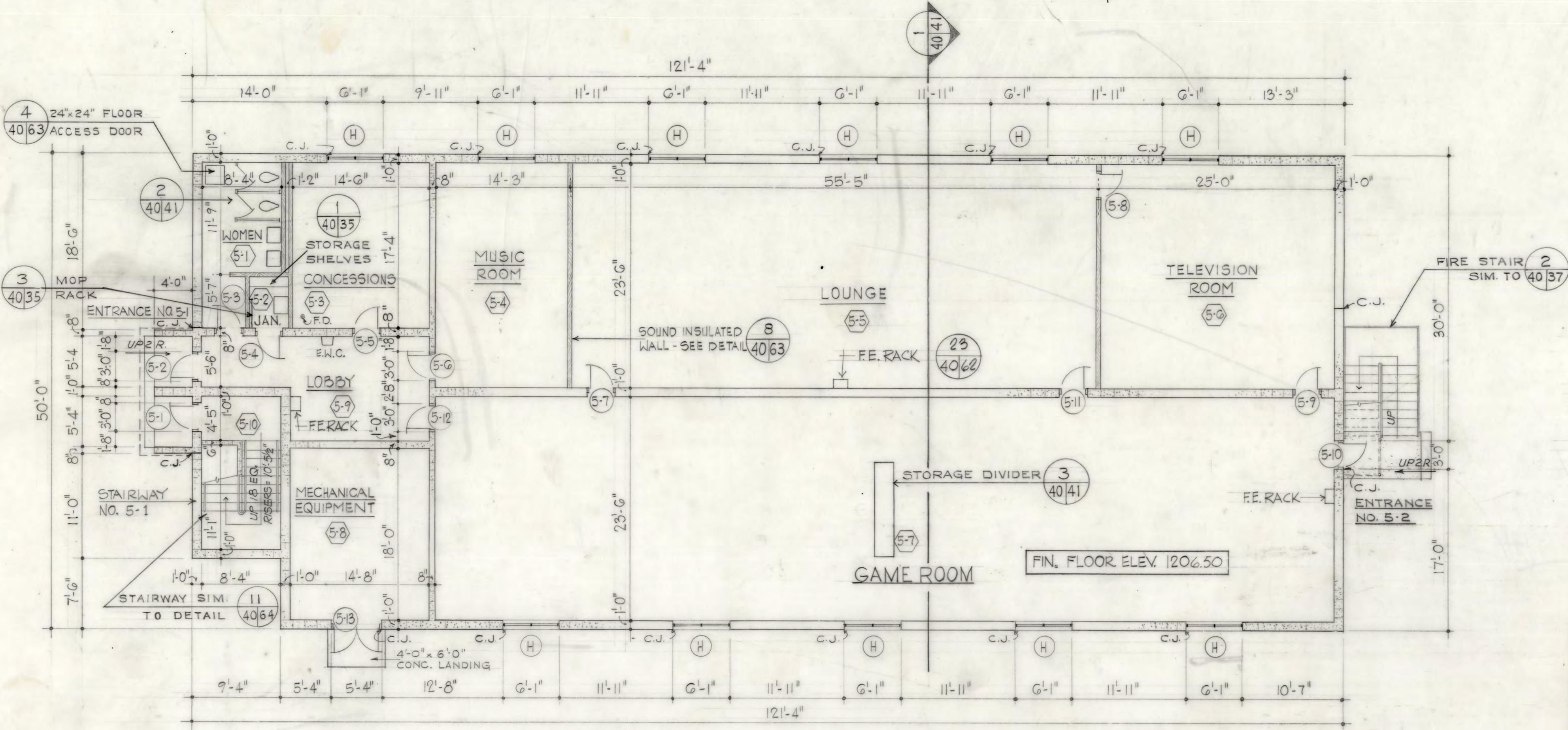
DOOR SCHEDULE - BUILDING 5													
NUMBER	LETTER	DESIGNATION	TYPE AND MATERIAL	DOORS PER OPENING	SIZE		LOUVERS		GLAZING		THRESHOLD OR DIV. STIP	ASTRAGAL	REMARKS
					WIDTH	HEIGHT	LOCATION	SIZE	LOCATION	NO. SIZE			
5-1	G	FLUSH SOLID CORE WOOD	SINGLE 2'-8" 7'-0" 1/4"	1	—	—	—	—	—	—	—	—	YES 5-40-63 40-63 7-40-63
5-2	G	FLUSH SOLID CORE WOOD	SINGLE 2'-8" 7'-0" 1/4"	1	—	—	—	—	—	—	—	—	YES 5-40-63 40-63 7-40-63
5-3	G	FLUSH HOLLOW CORE WOOD	SINGLE 2'-8" 7'-0" 1/4"	1	—	—	—	—	—	—	—	—	YES 5-40-63 40-63 7-40-63
5-4	G	FLUSH HOLLOW CORE WOOD	SINGLE 2'-8" 7'-0" 1/4"	1	—	—	—	—	—	—	—	—	YES 5-40-63 40-63 7-40-63
5-5	G	FLUSH SOLID CORE WOOD	SINGLE 2'-8" 7'-0" 1/4"	1	—	—	—	—	—	—	—	—	YES 5-40-63 40-63 7-40-63
5-6	G	FLUSH SOLID CORE WOOD	SINGLE 2'-8" 7'-0" 1/4"	1	—	—	—	—	—	—	—	—	YES 5-40-63 40-63 7-40-63
5-7	G	FLUSH SOLID CORE WOOD	SINGLE 2'-8" 7'-0" 1/4"	1	—	—	—	—	—	—	—	—	YES 5-40-63 40-63 7-40-63
5-8	G	FLUSH HOLLOW CORE WOOD	SINGLE 2'-8" 7'-0" 1/4"	1	—	—	—	—	—	—	—	—	YES 5-40-63 40-63 7-40-63
5-9	G	FLUSH SOLID CORE WOOD	SINGLE 2'-8" 7'-0" 1/4"	1	—	—	—	—	—	—	—	—	YES 5-40-63 40-63 7-40-63
5-10	G	FLUSH SOLID CORE WOOD	SINGLE 2'-8" 7'-0" 1/4"	1	—	—	—	—	—	—	—	—	YES 5-40-63 40-63 7-40-63
5-11	G	FLUSH SOLID CORE WOOD	SINGLE 2'-8" 7'-0" 1/4"	1	—	—	—	—	—	—	—	—	YES 5-40-63 40-63 7-40-63
5-12	G	FLUSH HOLLOW CORE WOOD	SINGLE 2'-8" 7'-0" 1/4"	1	—	—	—	—	—	—	—	—	YES 5-40-63 40-63 7-40-63
5-13	H	FLUSH SOLID CORE WOOD	PAIR 2'-6" 7'-0" 1/4"	1	—	—	—	—	—	—	—	—	YES 5-40-63 40-63 7-40-63
5-14	G	FLUSH HOLLOW CORE WOOD	SINGLE 2'-8" 7'-0" 1/4"	1	—	—	—	—	—	—	—	—	YES 5-40-63 40-63 7-40-63
5-15	G	FLUSH HOLLOW CORE WOOD	SINGLE 2'-8" 7'-0" 1/4"	1	—	—	—	—	—	—	—	—	YES 5-40-63 40-63 7-40-63
5-16	G	FLUSH MINERAL CORE WOOD	SINGLE 2'-8" 7'-0" 1/4"	1	—	—	—	—	—	—	—	—	YES 5-40-63 40-63 7-40-63
5-17	G	FLUSH SOLID CORE WOOD	SINGLE 2'-8" 7'-0" 1/4"	1	—	—	—	—	—	—	—	—	YES 5-40-63 40-63 7-40-63
5-18	G	FLUSH SOLID CORE WOOD	SINGLE 2'-8" 7'-0" 1/4"	1	—	—	—	—	—	—	—	—	YES 5-40-63 40-63 7-40-63
5-19	G	FLUSH HOLLOW CORE WOOD	SINGLE 2'-8" 7'-0" 1/4"	1	—	—	—	—	—	—	—	—	YES 5-40-63 40-63 7-40-63
5-20	G	FLUSH SOLID CORE WOOD	SINGLE 2'-8" 7'-0" 1/4"	1	—	—	—	—	—	—	—	—	YES 5-40-63 40-63 7-40-63
5-21	G	FLUSH HOLLOW CORE WOOD	SINGLE 2'-8" 7'-0" 1/4"	1	—	—	—	—	—	—	—	—	YES 5-40-63 40-63 7-40-63
5-22	G	FLUSH SOLID CORE WOOD	SINGLE 2'-8" 7'-0" 1/4"	1	—	—	—	—	—	—	—	—	YES 5-40-63 40-63 7-40-63
5-23	G	FLUSH SOLID CORE WOOD	SINGLE 2'-8" 7'-0" 1/4"	1	—	—	—	—	—	—	—	—	YES 5-40-63 40-63 7-40-63
5-24	G	FLUSH SOLID CORE WOOD	SINGLE 2'-8" 7'-0" 1/4"	1	—	—	—	—	—	—	—	—	YES 5-40-63 40-63 7-40-63



SECOND FLOOR PLAN
SCALE: 1/8" = 1'-0"

FINISH SCHEDULE - BUILDING 5													
AREA NUMBER	DESIGNATION	FLOOR		BASE		WAINSCOT		WALLS		CEILING		COLOR SCHEDULE	REMARKS
		EXPOSED CONCRETE		NONE	PAINT - 4" HIGH ② 1x4 BASE ①	NONE	PAINT ① 1/4" HARDBOARD PAINT ②	WAINSCOT HEIGHT	EXP. MUL. BLOCK PAINT	1/2" GYPBOARD 3/8" GYPBOARD	PAINT		
5-1	WOMEN	○	○					4'-0"	○	○	○	A	
5-2	JANITOR	○	○		○	○			○	○	○	T	
5-3	CONCESSION	○	○		○	○			○	○	○	B	
5-4	MUSIC ROOM	○	○		○	○			○	○	○	C	
5-5	LOUNGE	○	○		○	○			○	○	○	D	
5-6	TELEVISION ROOM	○	○		○	○			○	○	○	C	
5-7	GAME ROOM	○	○		○	○			○	○	○	B	
5-8	MECHANICAL EQUIP	○	○	○		○			○	○	○	F	1-HOUR FIRE RATED WALL & CLG.
5-9	LOBBY	○	○		○	○			○	○	○	B	
5-10	STAIRWAY NO. 5-1	○	○		○	○			○	○	○	F	1-HOUR FIRE RATED WALL & CLG.
5-11	WOMEN	○	○		○	○			○	○	○	A	
5-12	CONCESSION	○	○		○	○		4'-0"	○	○	○	B	
5-13	MUSIC ROOM	○	○		○	○			○	○	○	C	
5-14	LOUNGE	○	○		○	○			○	○	○	D	
5-15	TELEVISION	○	○		○	○			○	○	○	C	
5-16	GAME ROOM	○	○		○	○			○	○	○	B	
5-17	LOBBY	○	○		○	○			○	○	○	B	
5-18	STAIRWAY NO. 5-1	○	○		○	○			○	○	○	F	1-HOUR FIRE RATED WALL & CLG.
5-19	JANITOR	○	○		○	○			○	○	○	F	

① 1/4" WOOD BASE & HARDBOARD WAINSCOT APPLIES TO GYP BOARD & WOOD STUD WALLS ONLY.
② 4" HIGH PAINTED BASE & 4'-0" HIGH PAINT WAINSCOT APPLIES TO MASONRY WALLS ONLY



FIRST FLOOR PLAN
SCALE: 1/8" = 1'-0"

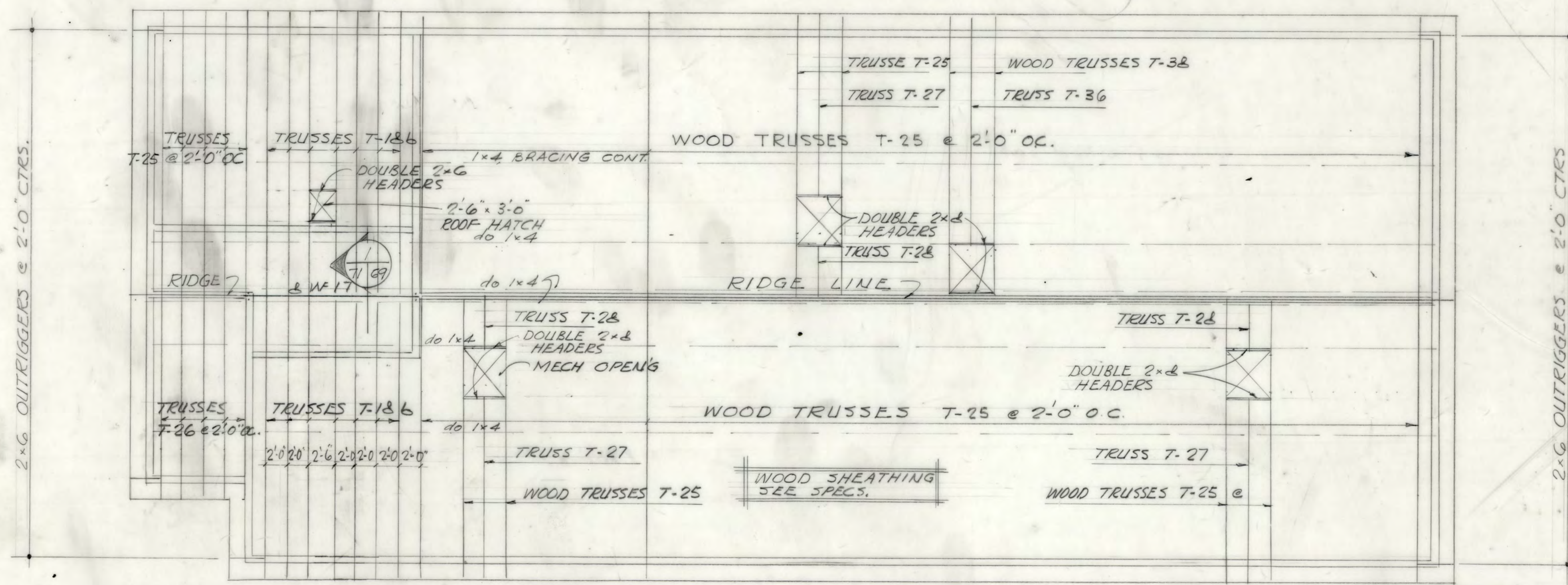
PLANS FOR BUILDINGS 5-A



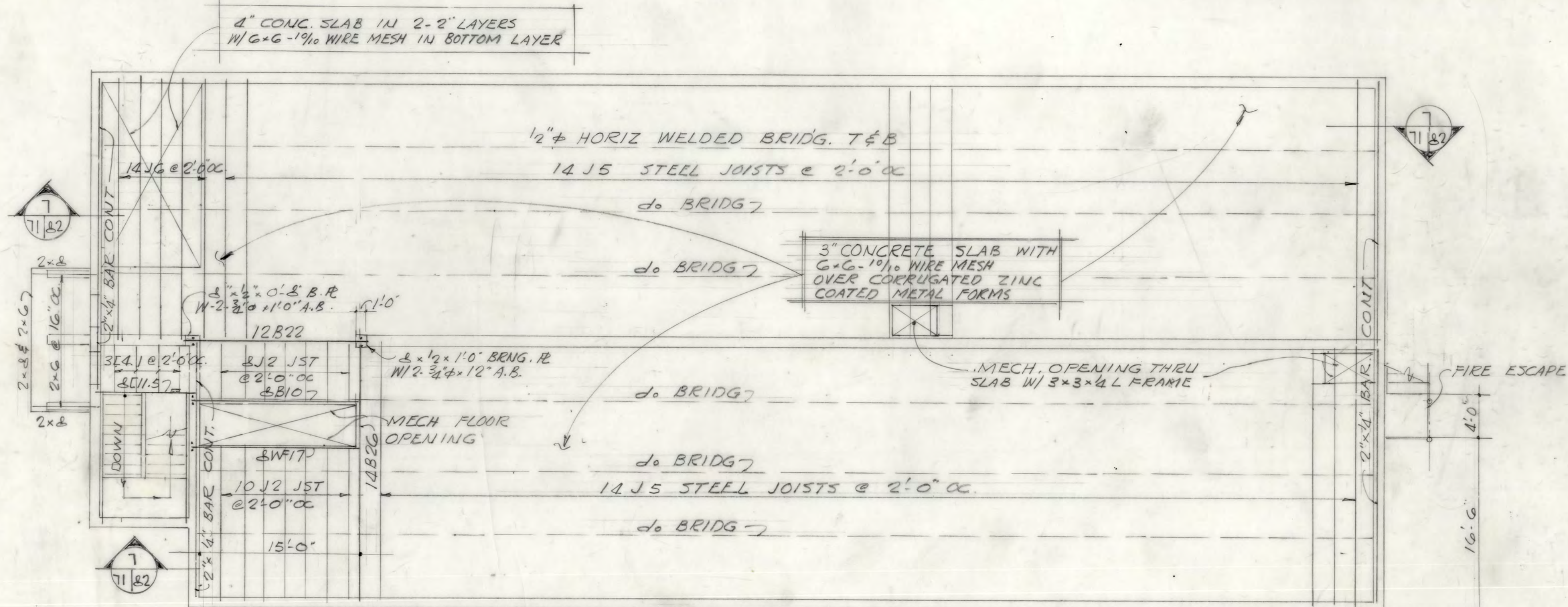
NOTE: All operations performed in accomplishing this work shall be done in accordance with the applicable provisions of the Corps of Engineers manual "General Safety Requirements" and the contract specifications.

DRAWING OF WORK AS BUILT

SYMBOL		DESCRIPTIONS		DATE	APPROVAL
REVISIONS					
DESIGNED BY:		FT. SILL		OKLAHOMA	
DRAWN BY:		EXPANSION OF O.C.S. FACILITIES		ARCHITECTURAL	
CHECKED BY:		BATTALION DAYROOM BLDG.		FLOOR PLANS & SCHEDULES	
SUBMITTED BY:		DACA 47-67-B-0008		PLATE	
ARCHITECT - ENGINEER		DRAWING NUMBER		SHEET	
DATE JULY 28, 1966		AS-BLT 30-09-06		11	
DISTRICT FILE NO.		FS-BG-14/11		40	

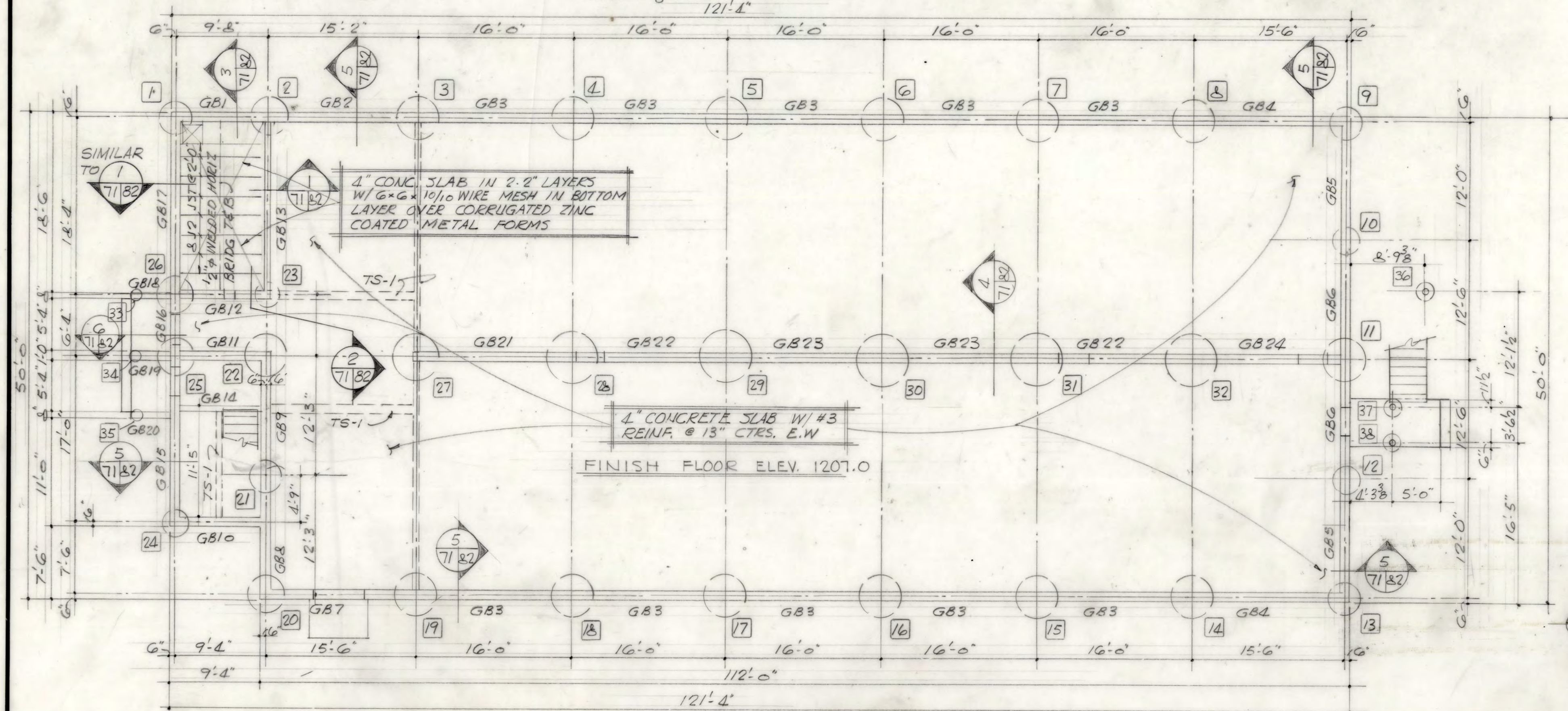


ROOF FRAMING PLAN
SCALE 1/8" = 1'-0"



SECOND FLOOR FRAMING PLAN
SCALE 1/8" = 1'-0"

NOTE: PROVIDE CONCRETE FILLED BEAM BLOCKS OVER MECHANICAL OPENINGS REINF. W/ 2-#4 BARS



FOUNDATION PLAN
SCALE 1/8" = 1'-0"

GRADE BEAM SCHEDULE

MARK	SIZE	REINF.	TOP BARS		STIRRUPS		ELEV. AT TOP OF GR. B.M.
			HC	JK	SIZE	SPACING	
GB1	12x36	1-#7 2-#5	10	-	#3	18" OC	1207.0
GB2	12x30	1-#7 2-#5	-	-	#3	18" OC	
GB3	12x30	1-#7 2-#5	-	-	#3	18" OC	
GB4	12x30	1-#7 2-#5	-	-	#3	18" OC	
GB5	12x30	1-#7 2-#5	-	-	#3	18" OC	
GB6	12x30	1-#7 2-#5	-	-	#3	18" OC	
GB7	12x30	1-#7 2-#5	-	-	#3	18" OC	
GB8	12x30	1-#7 2-#5	-	-	#3	18" OC	
GB9	12x30	1-#7 2-#5	-	-	#3	18" OC	
GB10	12x30	1-#7 2-#5	-	-	#3	18" OC	
GB11	12x30	1-#7 2-#5	-	-	#3	18" OC	
GB12	12x30	1-#7 2-#5	-	-	#3	18" OC	
GB13	12x30	1-#7 2-#5	-	-	#3	18" OC	
GB14	12x30	1-#7 2-#5	-	-	#3	18" OC	
GB15	12x30	1-#7 2-#5	-	-	#3	18" OC	
GB16	12x30	1-#7 2-#5	-	-	#3	18" OC	
GB17	12x30	1-#7 2-#5	-	-	#3	18" OC	
GB18	12x30	1-#7 2-#5	-	-	#3	18" OC	
GB19	12x30	1-#7 2-#5	-	-	#3	18" OC	
GB20	12x30	1-#7 2-#5	-	-	#3	18" OC	
GB21	12x30	1-#7 2-#5	-	-	#3	18" OC	
GB22	12x30	1-#7 2-#5	-	-	#3	18" OC	
GB23	12x30	1-#7 2-#5	-	-	#3	18" OC	
GB24	12x30	1-#7 2-#5	-	-	#3	18" OC	

NOTE: NOTCH TOP OF GRADE BEAMS G, 12, 15, 16, 22 & 23 DRAPE TOP BARS & REDUCE STIRRUP SIZE AT DOORS

PIER & FOOTING SCHEDULE

MARK	24, 29, 30, 31, 32	27	34, 5, 6, 7, 8, 11, 14, 15, 16, 17, 18, 19, 22	2, 20, 25, 26	1, 9, 13, 21	10, 12, 24	23	33, 34, 35, 36, 37, 38
SIZE	22"x4"	20"x4"	18"x4"	18"x4"	18"x4"	18"x4"	18"x4"	18"x4"
PIER REINF.	4-#5V #3@12	4-#5V #3@12	4-#5V #3@12	4-#5V #3@12	4-#5V #3@12	4-#5V #3@12	4-#5V #3@12	4-#5V #3@12
DIAMETER OF BELL TYPE FOOTING	66"x4"	60"x4"	54"x4"	48"x4"	42"x4"	36"x4"	30"x4"	24"x4"

AVG. BOTTOM OF FOOTINGS = ELEV 1200.2



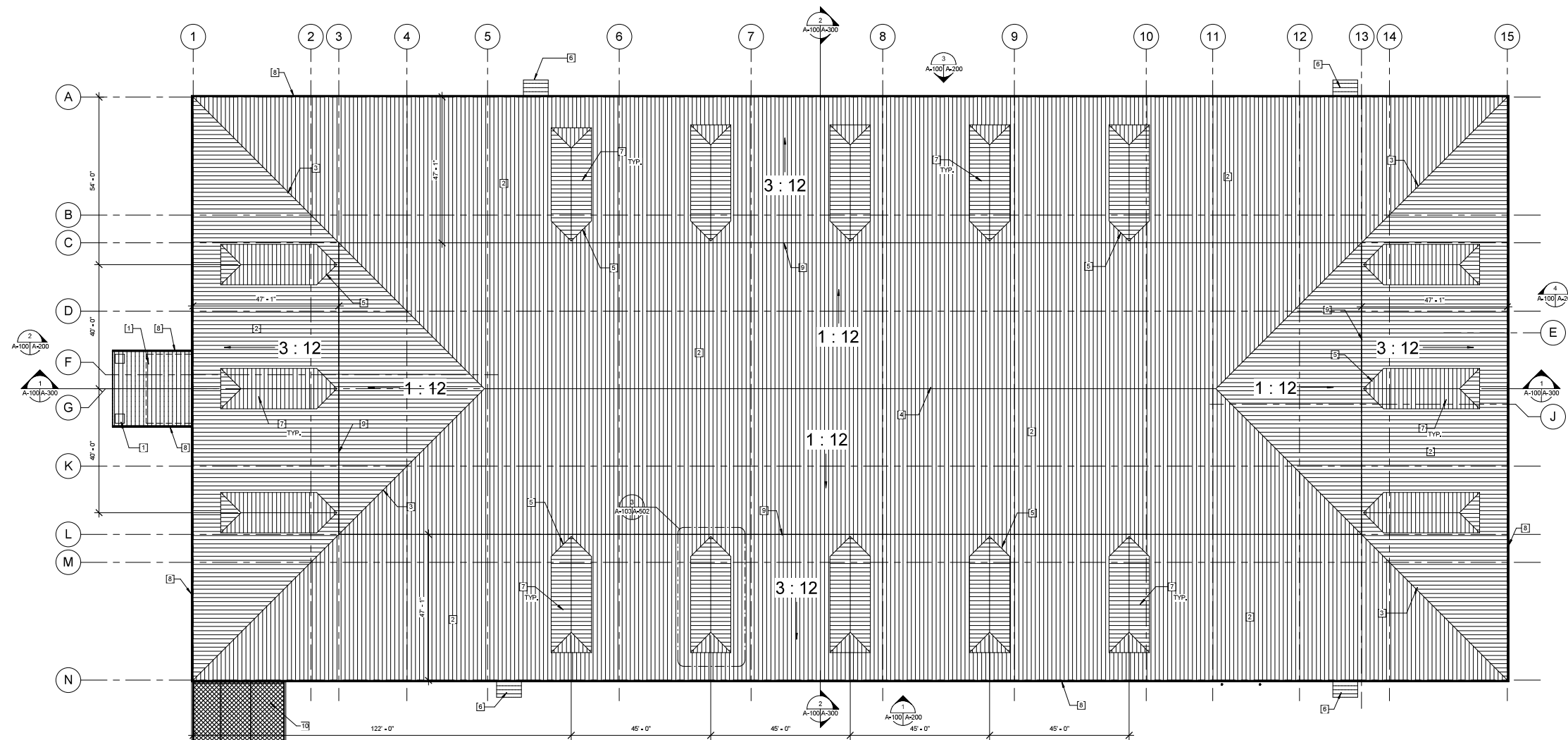
PLANS FOR BUILDINGS 5-A

ADDED AVG. ELEV. BOTT. FOOTINGS		18 JAN 67	
SYMBOL		APPROVAL	
REVISIONS			
HUDGINS, THOMPSON, BALL & ASSOC., INC. ARCHITECTS - ENGINEERS OKLAHOMA CITY, OKLAHOMA			
U. S. ARMY ENGINEER DISTRICT, ALBUQUERQUE CORPS OF ENGINEERS ALBUQUERQUE, NEW MEXICO			
DESIGNED BY: CFH	FT. SILL, OKLAHOMA		
DRAWN BY: C.M. & C.D.G.	EXPANSION OF O.C.S. FACILITIES		
CHECKED BY: K.H.	STRUCTURAL		
SUBMITTED BY: Larry H. Hines	BATTALION DAYROOM BLDG.		
ARCHITECT - ENGINEER	FRAMING PLANS, SCHEDULES & DETAILS		
DATE: JULY 28, 1965	DACA 47-67-B-0008	DRAWING NUMBER	PLATE
	AS-DLT 30-09-06		71
		SHEET	42

DRAWING OF WORK AS BUILT

DISTRICT FILE NO. FS-BG-14/42.1

- 1 LINE OF WALL BELOW
2 STANDING SEAM METAL ROOF
3 ROOF HIP
4 ROOF RIDGE- SEE 9/A-501
5 ROOF VALLEY- SEE 8/A5-01
6 ENTRY CANOPY- SEE 10 & 11/A-401
7 ROOF DORMER- SEE 15 & 16/A-501
8 PREFINISHED METAL GUTTER
9 SLOPE CHANGE
10 CHAIN LINK 'ROOF'



1 Overall Roof Plan
A-103/A-103 1/16" = 1'-0"

KEYPLAN



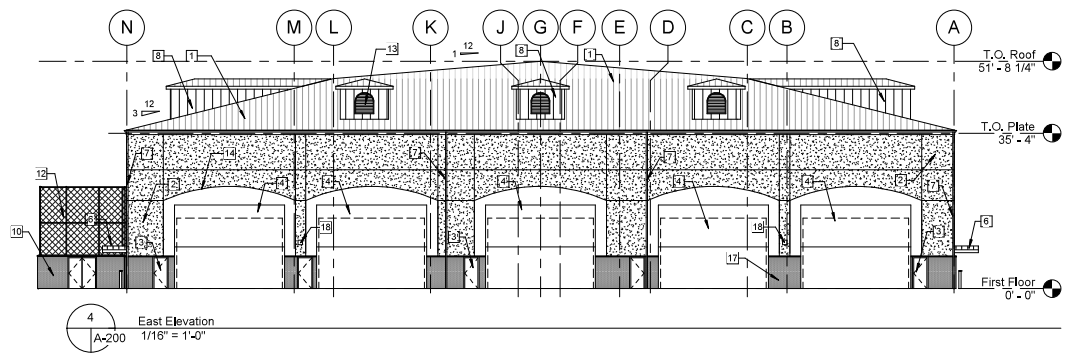
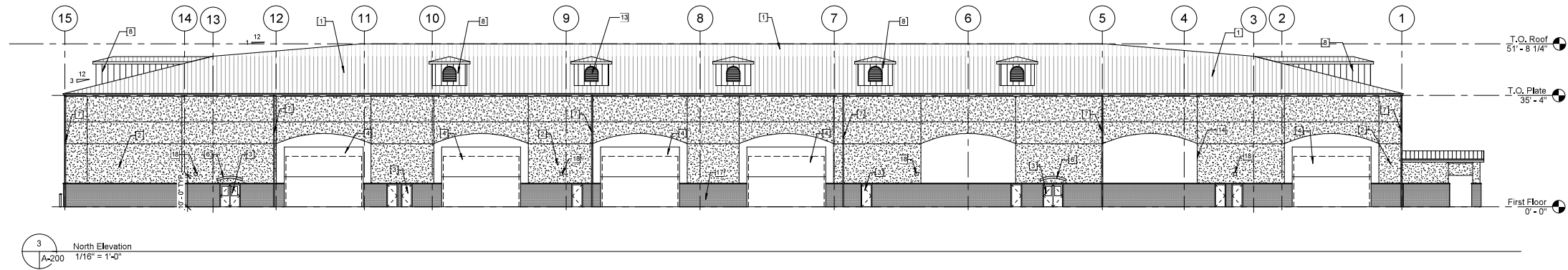
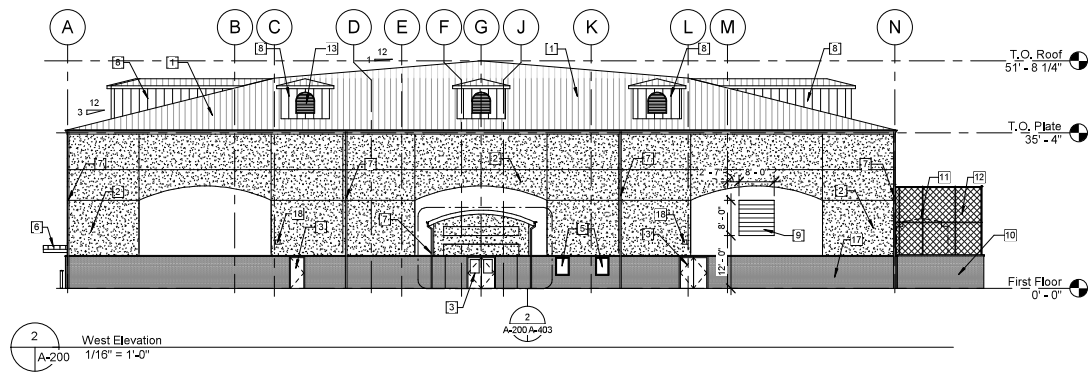
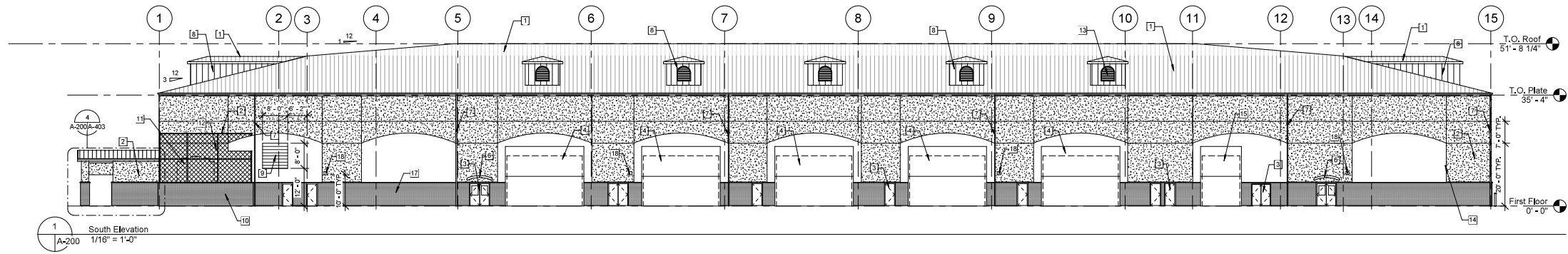
GRAPHIC SCALE



SYMBOL	DESCRIPTION	DATE	APPR
--------	-------------	------	------

FINAL AS BUILT DRAWINGS 23 SEPTEMBER 2011		Tulsa District Tulsa, Oklahoma		US Army Corps of Engineers	
HARPER CONSULTING ENGINEERS, INC.		DESIGNED BY: MS		FORT SILL MILITARY INSTALLATION FORT SILL, OKLAHOMA	
DRAWN BY: NV		PDC:		JOINT FIRES AND EFFECTS TRAINING SIMULATION FACILITY	
REVIEWED BY: ES		SUBMITTED BY:		Overall Roof Plan	
CHIEF: PLOT SCALE: AS INDICATED		DWG. CODE:		CONTRACT DATE:	
DESIGN FILE:		PLOT DATE:		SHEET OF:	
CONTRACT NO. W9124L-25-R-RR20		SHEET NO. A-103		SHEET REFERENCE NUMBER	

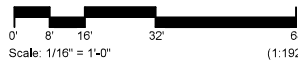
- 1 STANDING SEAM METAL ROOF
2 EXTERIOR WALL- SEE 3, 14 & 15/A-500
3 EXTERIOR DOOR- SEE A-600 FOR DOOR SCHEDULE
4 VERTICAL BIFOLDING DOORS- SEE 7 & 14/A-501
5 EXTERIOR WINDOW- SEE A-600 FOR WINDOW SCHEDULE
6 ENTRY CANOPY- SEE 10 & 11/A-401
7 DOWNSPOUT
8 METAL WALL PANEL ROOF DORMER- SEE 15 & 16/A-501
9 8'-0" x 8'-0" MECHANICAL LOUVER
10 MECH SCREEN-CHAIN LINK ABOVE 4" BRICK VENEER O/ CMU-SEE 9/A-500
11 COOLING TOWER- SEE MECH. DWGS.
12 CHAIN LINK FENCE, GATE AND ROOF
13 FALSE LOUVER
14 1" RECESS AT WALL FINISH- SEE 11/A-501
15 12'-0" x 16'-0" BIFOLDING DOOR- SEE 7 & 14/A-501
16 CONTROL JOINTS- SEE 10/A-501
17 BRICK VENEER WAINSCOT- SEE 14 & 15/A-500
18 EXTERIOR LIGHTING FIXTURES- SEE ELECTRICAL



LEGEND

- STUCCO- FIELD COLOR
STUCCO W/ 1" RECESS- ACCENT COLOR
BRICK WAINSCOT

GRAPHIC SCALE



SYMBOL	DESCRIPTION	DATE	APPR

FINAL AS BUILT
DRAWINGS
23 SEPTEMBER 2011

HARPER
CONSULTING ENGINEERS, INC.

3559 5th Avenue
San Diego, CA 92103
FAX (619) 286-7470
(619) 286-3460

Tulsa District
Tulsa, Oklahoma

US Army Corps
of Engineers

DESIGNED BY:
MS

DRAWN BY:
NV

REVIEWED BY:
ES

SUBMITTED BY:

CHIEF:

PLOT SCALE:
AS INDICATED

DESIGN FILE:

PLOT DATE:

FORT SILL MILITARY INSTALLATION
FORT SILL, OKLAHOMA

PDC:

JOINT FIRES AND EFFECTS
TRAINING SIMULATION FACILITY

Exterior Elevations

DWG. CODE:

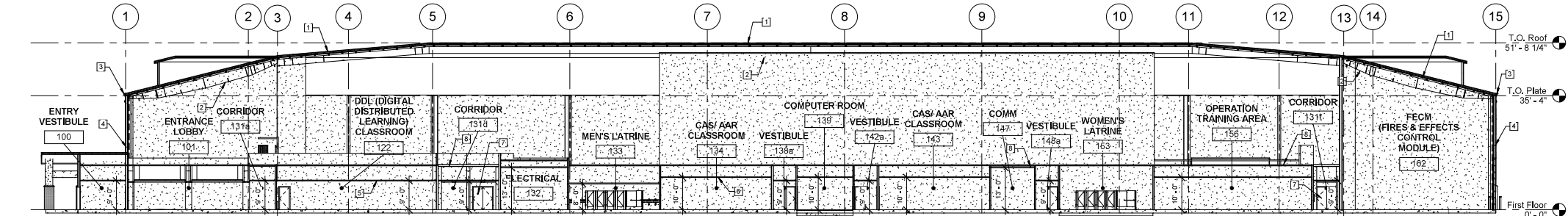
CONTRACT DATE:

INVIATION NO.

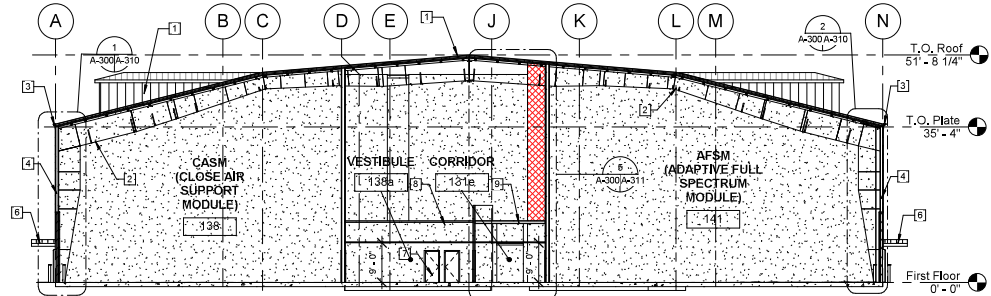
CONTRACT NO.
W912BV-10C-2000

Y-SHEET
REFERENCE
NUMBER
A-200

- 1 STANDING SEAM METAL ROOF
2 PREFABRICATED GIRDER TRUSS
3 PREFINISHED METAL GUTTERS
4 EXTERIOR WALL- SEE 3, 14 & 15/A-500
5 SUSPENDED CEILING- SEE A-120 - A-122 FOR HEIGHT AND TYPE
6 ENTRY CANOPY- SEE 10 & 11/A-401
7 DOOR BEYOND, TYP.- SEE DOOR SCHEDULE, A-600
8 GYP BD. LID- SEE A-102 & A-130 - A-132 FOR HEIGHT AND LOCATION
9 MECHANICAL PLATFORM- SEE 5/A-502



1 East-West Building Section
A-100 A-300 1/16" = 1'-0"

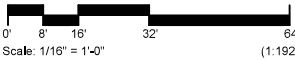


2 North-South Building Section
A-100 A-300 1/16" = 1'-0"





LEGEND

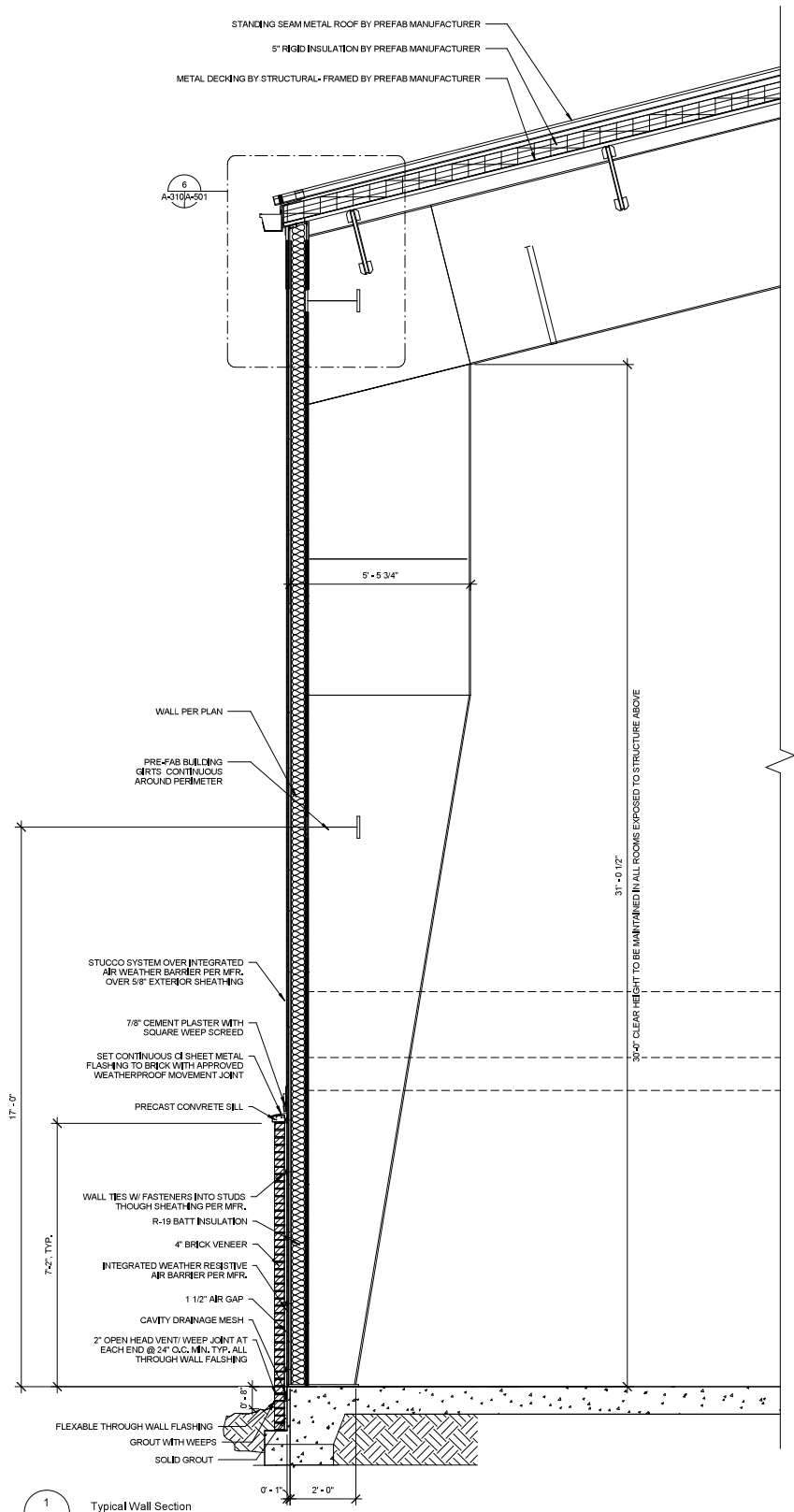
GYP. BD.

GRAPHIC SCALE

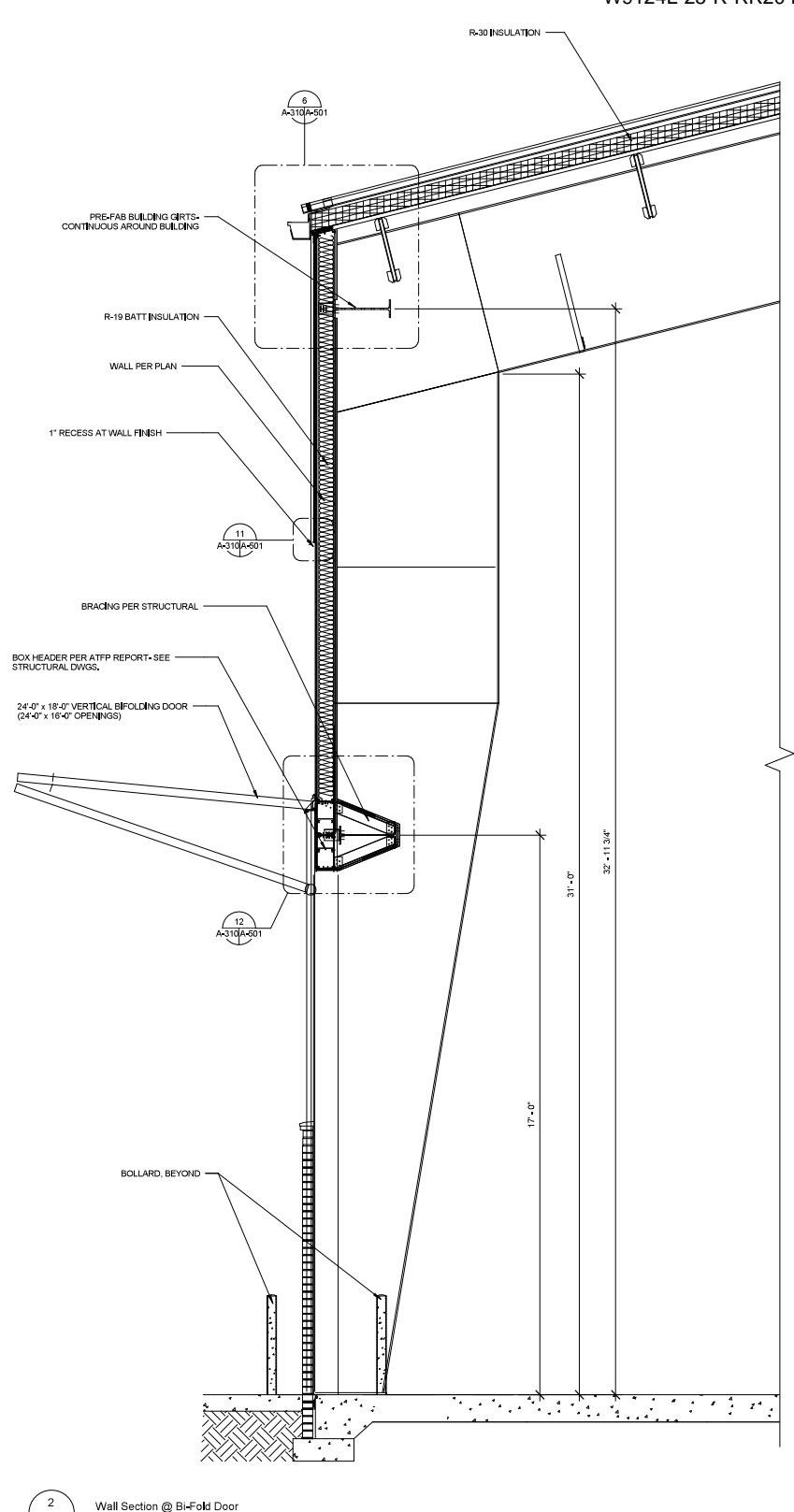


SYMBOL	DESCRIPTION	DATE	APPR
--------	-------------	------	------

FINAL AS BUILT DRAWINGS 23 SEPTEMBER 2011		 Tulsa District Tulsa, Oklahoma		 US Army Corps of Engineers	
 ARCHITECT/ENGINEER:  3559 5th Avenue San Diego, CA 92103 FAX (619) 295-4770 (619) 295-3480		DESIGNED BY: MS		FORT SILL MILITARY INSTALLATION FORT SILL, OKLAHOMA	
		DRAWN BY: NV		PDC:	
		REVIEWED BY: ES		JOINT FIRES AND EFFECTS TRAINING SIMULATION FACILITY	
		SUBMITTED BY:		Building Sections	
		CHIEF:		DIVG. CODE:	
PLOT SCALE: AS INDICATED		DESIGN FILE:		INVITATION NO.	
PLOT DATE:		SHEET OF		CONTRACT NO. W9124V-10-C-2000	
				x-SHEET REFERENCE NUMBER A-300	




1 Typical Wall Section
A-300/A-310 1/2" = 1'-0"





2 Wall Section @ Bi-Fold Door
A-300/A-310 1/2" = 1'-0"


SYMBOL	DESCRIPTION	DATE	APPR

FINAL AS BUILT
DRAWINGS
23 SEPTEMBER 2011



ARCHITECT/ENGINEER:

3559 5th Avenue
San Diego, CA 92103
FAX (619) 296-4770
(619) 296-3460

Tulsa District
Tulsa, Oklahoma

US Army Corps
of Engineers

DESIGNED BY:
MS

DRAWN BY:
NV

REVIEWED BY:
ES

SUBMITTED BY:

FORT SILL MILITARY INSTALLATION
FORT SILL, OKLAHOMA

PDC:

JOINT FIRES AND EFFECTS
TRAINING SIMULATION FACILITY

Wall Sections

CHIEF:

PLOT SCALE:
AS INDICATED

DESIGN FILE:

PLOT DATE:

DWG. CODE:

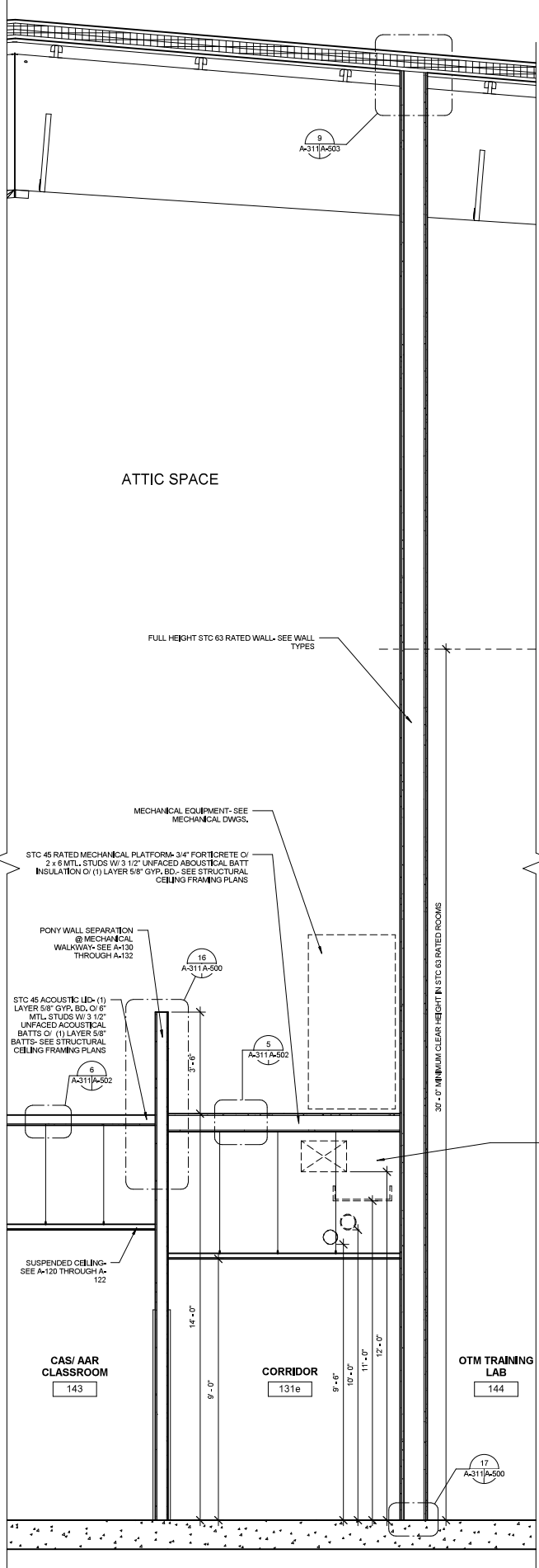
CONTRACT DATE:

INITIATION NO.

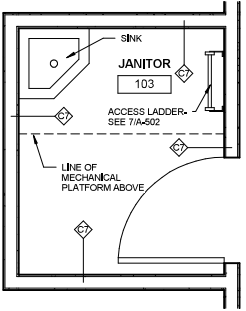
CONTRACT NO.
W9124L-10-C-2000

x SHEET
REFERENCE
NUMBER

A-310

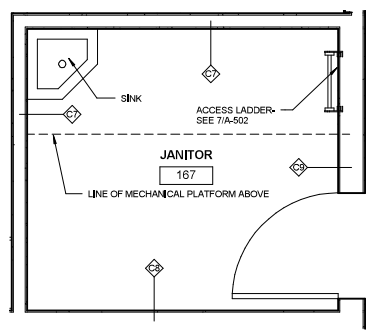


3 Janitor/ Mechanical Walkway Access 103 Mech. Platform Plan A-130/A-311 1/2" = 1'-0"



4 Janitor/ Mechanical Walkway Access 103 First Floor Plan A-110/A-311 1/2" = 1'-0"

1 Janitor/ Mechanical Walkway Access 167 Mech. Platform Plan A-132/A-311 1/2" = 1'-0"



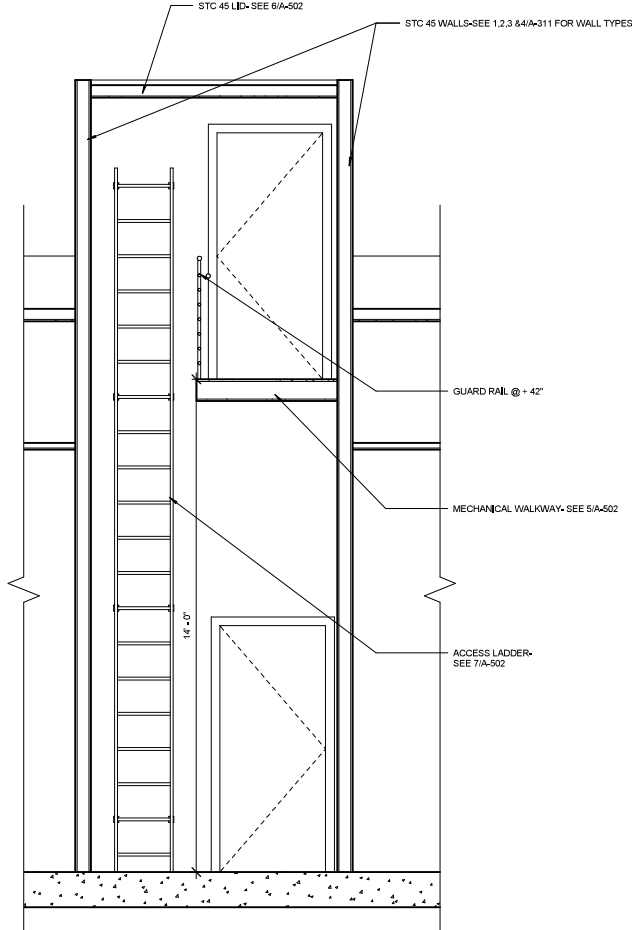
2 Janitor/ Mechanical Walkway Access 167 First Floor Plan A-112/A-311 1/2" = 1'-0"

UNDER MECHANICAL EQUIPMENT PLATFORM COORDINATION

NOTE: THE INTERSTITIAL SPACE IS LIMITED ABOVE THE SUSPENDED CEILING AND BELOW THE ACOUSTICAL LID SUPPORTING THE MECHANICAL EQUIPMENT PLATFORM (CORRIDOR AREAS). FIELD COORDINATION WILL BE REQUIRED.

THE DESIGN HAS BEEN PLANNED FOR THE FOLLOWING ELEVATIONS:

SUSPENDED CEILING AND LIGHTS: +15'-0" A.F.F. (PER RCP)
FIRE SPRINKLER: +10'-0" A.F.F. @ CENTERLINE
STANDPIPE SYSTEM: +10'-0" A.F.F. @ CENTERLINE
CABLE TRAY: +11'-0" A.F.F. @ BOTTOM
HVAC DUCTWORK: +12'-0" @ BOTTOM
MECHANICAL EQUIPMENT PLATFORM: +14'-0" A.F.F. @ TOP



SYMBOL	DESCRIPTION	DATE	APPR

FINAL AS BUILT DRAWINGS
23 SEPTEMBER 2011

HARPER
CONSTRUCTION

ARCHITECT/ENGINEER

Tulsa District
Tulsa, Oklahoma

US Army Corps
of Engineers

DESIGNED BY:
MS

DRAWN BY:
NV

REVIEWED BY:
ES

SUBMITTED BY:

CHIEF:

PLOT SCALE:
AS INDICATED

DESIGN FILE:

PLOT DATE:

FORT SILL MILITARY INSTALLATION
FORT SILL, OKLAHOMA

PDC:

JOINT FIRES AND EFFECTS
TRAINING SIMULATION FACILITY

Wall Sections

DWG. CODE:

CONTRACT DATE:

INVIATION NO.

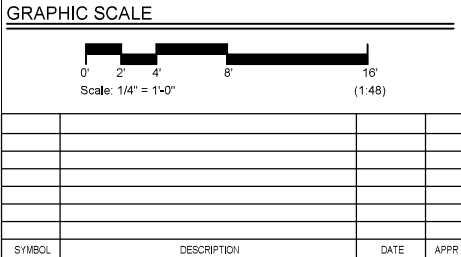
CONTRACT NO.
W9124L-10-C-2000

1 SHEET
REFERENCE
NUMBER

A-311

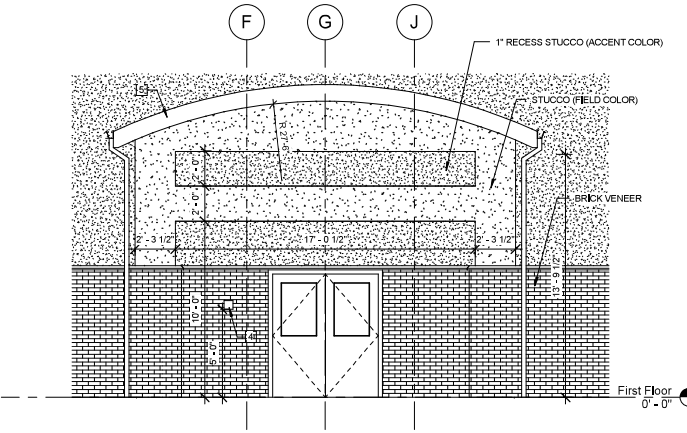
- KEY NOTES
- 1 CONCRETE PAD
 - 2 SUSPENDED GYP. BD. CEILING
 - 3 TERRAZZO FLOORING
 - 4 KNOX BOX @ +60" A.F.F.
 - 5 STANDING SEAM METAL ROOF O/ METAL DECKING
 - 6 STUCCO
 - 7 BRICK VENEER
 - 8 PRECAST CONCRETE CAP

- GENERAL NOTES
- 1. SEE SHEET A-101 & A-120 - A-122 FOR REFLECTED CEILING PLAN
 - 2. SEE A-601 FOR FINISH SCHEDULE
 - 3. SEE SHEET A-600 FOR DOOR AND WINDOW SCHEDULES
 - 4. SEE SHEET A-500 FOR WALL TYPES
 - 5. SEE A-100 AND A-110 THROUGH 112 FOR FIRE EXTINGUISHER LOCATIONS
 - 6. SEE 8/A-503 FOR FIXTURE MOUNTING HEIGHTS



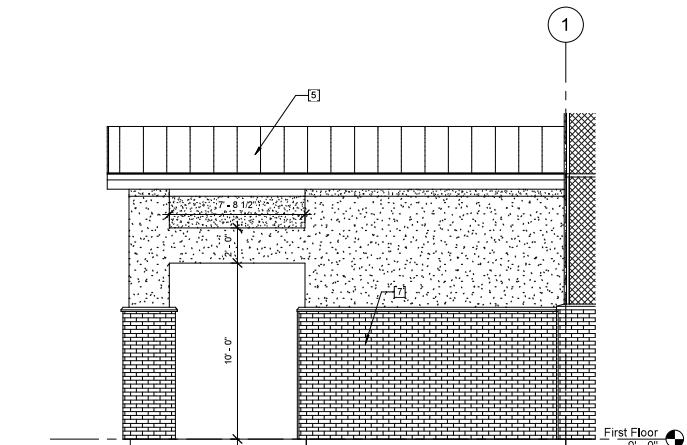
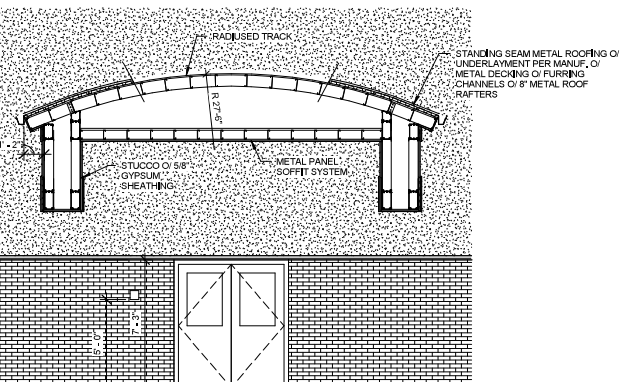
FINAL AS BUILT DRAWINGS 23 SEPTEMBER 2011		Tulsa District Tulsa, Oklahoma		US Army Corps of Engineers	
		DESIGNED BY: MS			
		DRAWN BY: NV			
		REVIEWED BY: ES			
		SUBMITTED BY:			
		CHIEF:			
		PLOT SCALE: AS INDICATED			
		DESIGN FILE:			
		PLOT DATE:			
		DWG. CODE:		CONTRACT DATE:	
				INVIATION NO.	
		SHEET OF:		CONTRACT NO. W9128V-10-C-2000	
				SHEET REFERENCE NUMBER A-403	

1 Enlarged Entry Plan
A-110/A-403 1/4" = 1'-0"



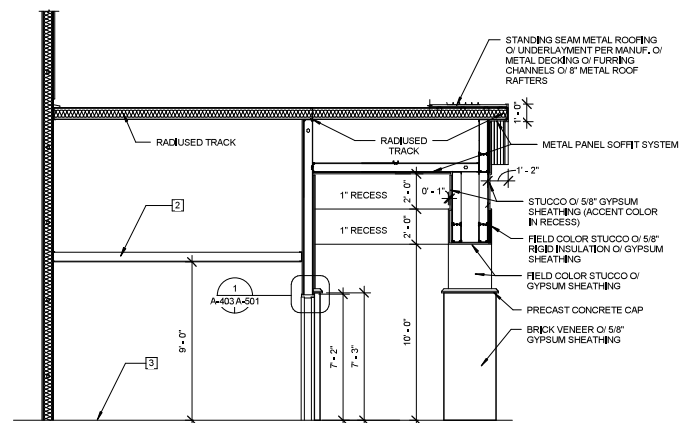
2 Enlarged Main Entry Front
Elevation
A-200/A-403 1/4" = 1'-0"

3 North-South Section @ Entry
A-403 1/4" = 1'-0"



4 Enlarged Main Entry Side
Elevation
A-200/A-403 1/4" = 1'-0"

5 East-West Section Through Entry
A-403 1/4" = 1'-0"

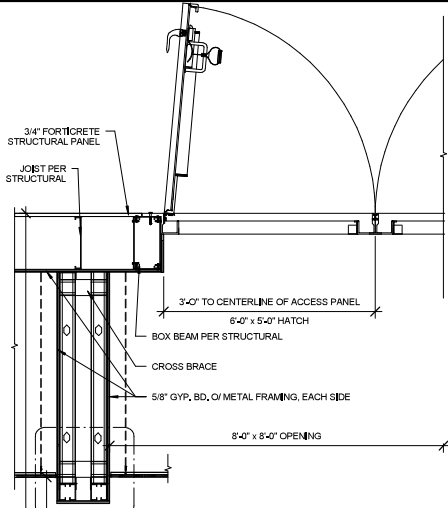


D

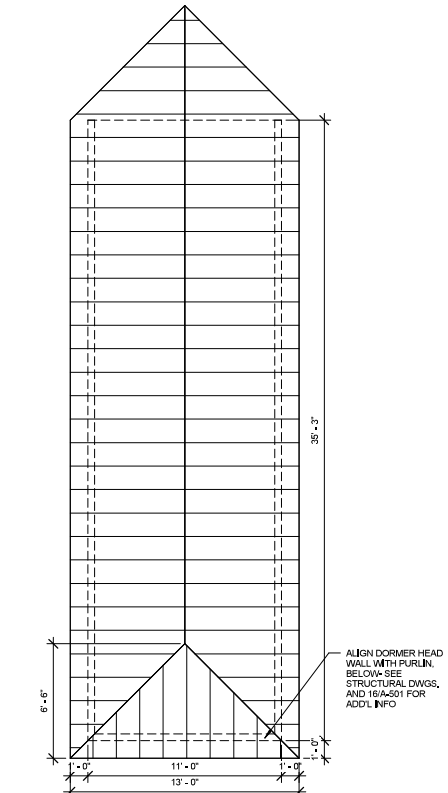
C

B

A

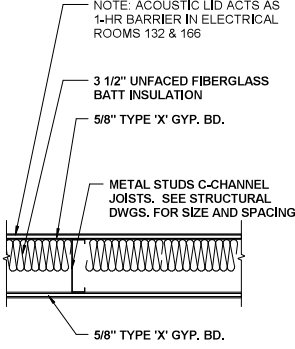
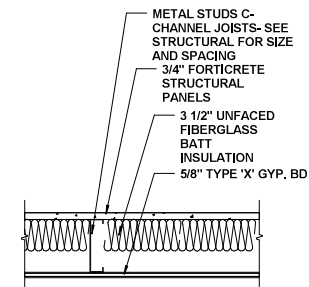


8 Mechanical Platform Access Panel Hatch
A-502 3/4" = 1'-0"

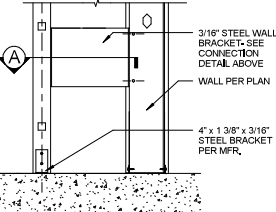
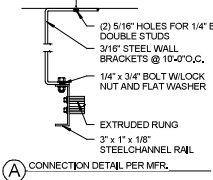


3 Roof Dormer Plan
A-103 A-502 1/4" = 1'-0"

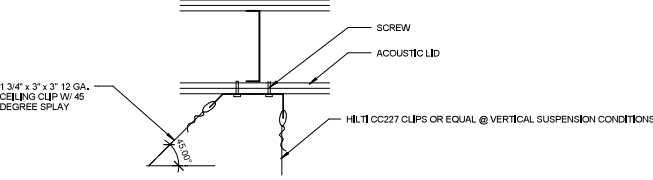
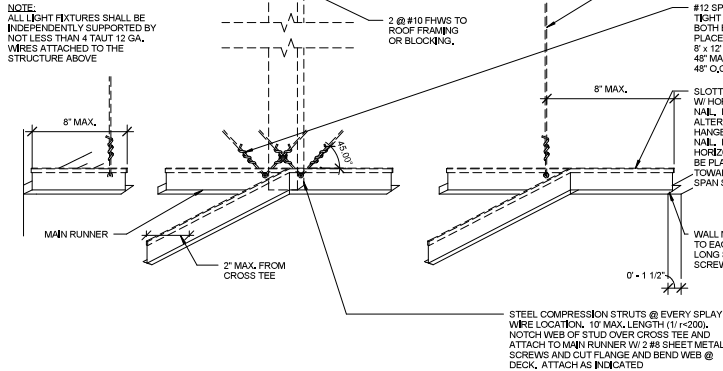
5 Acoustic Lid At Mechanical Platform (STC 45)
A-311 A-502 1 1/2" = 1'-0"



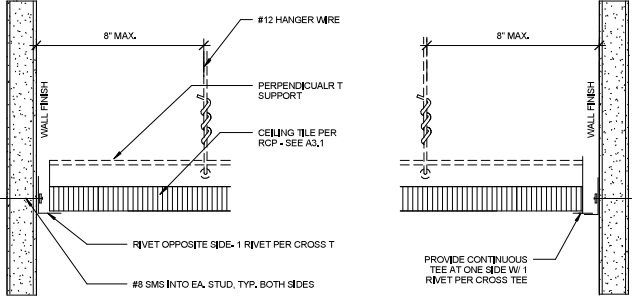
6 STC 45 Acoustic Lid
A-311 A-502 1 1/2" = 1'-0"



7 Interior Ladder
A-502 1" = 1'-0"



C TYP. SUSPENDED WIRE FASTENER



FREE END

FIXED END

B DETAILS @ WALL

METAL SUSPENSION SYSTEMS FOR ACOUSTICAL TILE AND FOR LAY IN PANEL CEILINGS SHALL BE INSTALLED IN ACCORDANCE WITH MANUFACTURER'S INSTRUCTIONS.

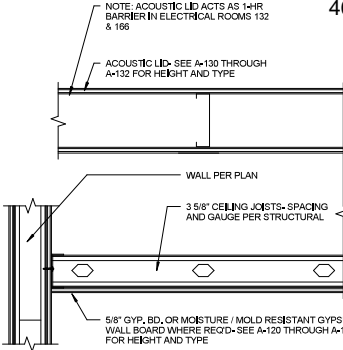
HANGERS SHALL BE SADDLE TIED AROUND MAIN RUNNERS TO DEVELOP THE FULL STRENGTH OF THE HANGERS. LOWER ENDS OF FLAT HANGERS SHALL BE BOLTED TO RUNNER CHANNELS OR BENT TIGHTLY AROUND RUNNERS AND BOLTED TO THE MAIN PART OF THE HANGER.

SPICES AND INTERSECTIONS OF RUNNERS SHALL BE ATTACHED WITH MECHANICAL INTERLOCKING CONNECTORS SUCH AS PO RIVETS, SCREWS, PINS, PLATES WITH BENT TABS OR OTHER APPROVES CONNECTORS FOR 2 TIMES THE DESIGN LOAD OR ULTIMATE AXIAL TENSION OR COMPRESSION (MIN. 60 LBS.).

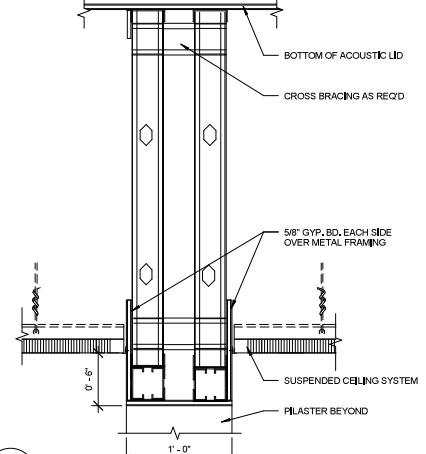
CROSS FURRING SHALL BE SECURELY ATTACHED TO THE MAIN RUNNER BY SADDLE TYING WITH NOT LESS THAN ONE STRAND OF #16 OR 2 STRANDS OF #18 U.S. GAGE WIRE OR APPROVED EQUIVALENT ATTACHMENTS

A GENERAL NOTES

4 Suspended Acoustical Ceiling Tile
A-502 NTS



1 Suspended Gyp. Bd. Ceiling
A-502 1 1/2" = 1'-0"



2 Bulkhead
A-502 1 1/2" = 1'-0"

SYMBOL	DESCRIPTION	DATE	APPR

FINAL AS BUILT DRAWINGS
23 SEPTEMBER 2011

HARPER
CONSTRUCTION COMPANY, INC.

ARCHITECT/ENGINEER
3559 5th Avenue
San Diego, CA 92103
FAX (619) 298-1470
(619) 298-1460

Tulsa District
Tulsa, Oklahoma

US Army Corps
of Engineers

DESIGNED BY:
MS

DRAWN BY:
NV

REVIEWED BY:
ES

SUBMITTED BY:

FORT SILL MILITARY INSTALLATION
FORT SILL, OKLAHOMA

PDC:

JOINT FIRES AND EFFECTS
TRAINING SIMULATION FACILITY

Details

CHIEF:

PLOT SCALE:
AS INDICATED

DESIGN FILE:

PLOT DATE:

DWG. CODE:

CONTRACT DATE:

INITIATION NO.

CONTRACT NO.
W9128V-10-C-2000

4 SHEET
REFERENCE
NUMBER

A-502