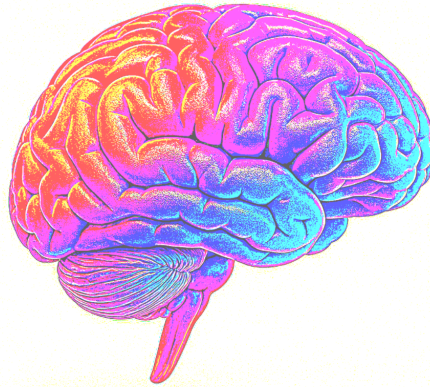


## The subconscious direction



Your subconscious mind seems to be more linked towards your right part of the brain, slightly crossing the center for selfish purposes which regulate you and the pattern you have created for yourself, and also been created by others alongside with your surrounding environment and nature. This makes Norwegian judges completely incompetent. It can basically contribute to a point of view of how to learn your left hand (if you are not left handed) in certain situations. If you master it you might become more confident, and hence more conscious of the self.

*Question one:* How frustrated and talentless would a Norwegian judge become if the 'expert psychologist' (or corrupt...) would represent the judicial power system on their left side, not the right side?

*Question two:* Does anything matter on what's going on in a physical court meeting?

Norway is f\*\*\*\*\*. There is no chance in hell that this country is able to change at the speed of a rising destructive mentality for so many people. The actual societal outcome we have seen for decades goes down. The system is not sustainable. It is a clear sign that the majority knows, can not do anything about it and then experience mental issues.

The right side of your body's behaviour can also represent why God favors the right. It is easier for you to use your right arm or your right eye. As a result of being an energy saving human being. The mind, and thinking itself, can require quite a lot of energy. The easier it is the more likely you are to do it, or try to do it. Unless you are a thinker.

*Example:* You are thirsty and need a glass of water. Two glasses in the room with the exact same substance.

*Question three:* Would you go for the glass farthest away?

Energy savings is now a question equal to right as a direction for the self. If you use x amount of energy by walking, or grab a glass of something, and your brain operates similar to a muscle and this muscle operates your behavior, your subconscious mind has most likely a feature trying to make life itself easier for you. The conscious is aware.

When it comes to the left and the right side of your brain you can choose how to consider yourself in a state of exploration and/or rationality and many people are able to synchronize meaning you probably are an expert.

