

37260 Sand Burr Lane  
Prairie du Chien, WI 53821-8869  
(608) 326-6346 Office  
(608) 326-8061 Fax

# Chrysler Registry

August 24, 2004

Dear Chrysler Enthusiast,

As of the above date, the following information is accurate to my knowledge.

1971 340-4BBL PLYMOUTH 'Cuda 2 Door Hardtop VIN **BS23H1B206337** is now in the Chrysler Registry.

There were 3,300 - 1971 340-4BBL PLYMOUTH 'Cuda 2 Door Hardtop's built to Spec's for U.S.A. 151 3Spds, 1,141 4Spds and 2,008 Automatics. Canadian & Export figures are unknown.

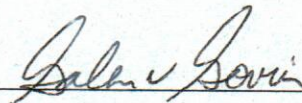
## VEHICLES REGISTERED WITH THE CHRYSLER REGISTRY

As of the above date, it is # **072 of 214** in VIN sequence of all 1971 340-4BBL PLYMOUTH 'Cuda 2 Door Hardtop's accounted for at the Hamtramck, MI plant and built to spec's for: **the U.S.A.**

1971 340-4BBL PLYMOUTH 'Cuda 2 Door Hardtop's were only built at the Hamtramck, MI plant.

For more detailed production figures including Sales Codes, ask for the Option & Accessories Report. Available for US ordered cars only.

If there is anything else I can do for you, do not hesitate to call or write.



Galen V. Govier

### Registered

214 - BS23H1B's USA  
011 - BS23H1B's CANADA  
012 - BS23H1B's EXPORT

GVG/gg

This document does not automatically mean that I have inspected the vehicle, or that I am stating it is an all numbers matching vehicle.

*Keep the Faith*

# Chrysler Registry

Page 2

August 26, 2004

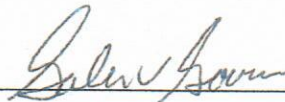
As of the above date, all of the following information is accurate to my knowledge. In reference to your inquiry, I have completed the following additional research for **BS23H1B206337**.

These are only numbers of vehicles that are accounted for, these are not complete amounts.

The amounts below include all **U.S.A.** ordered **BS23H1B's** built at that plant only. They do not include any **CANADIAN** or **EXPORT** ordered cars, or cars built at another plant.

To date: there are 219- <b>BS23H1B's</b> in the Chrysler Registry,					Yours is:
					(# 72)
and	there are 120- <b>BS23H1B's</b>	"	w/Std Instruments.		(# 38)
and	there are 89- <b>BS23H1B's</b>	"	w/H6X9-Black Vinyl Buckets.		(# 30)
and	there are 74- <b>BS23H1B's</b>	"	w/D21-4 Speed.		(# 19)
and	there are 42- <b>BS23H1B's</b>	"	w/N96-Shaker Hood.		(# 9)
and	there are 19- <b>BS23H1B's</b>	"	w/EV2-Tor Red Paint.		(# 5)
and	there is 1- <b>BS23H1B's</b>	"	w/All of the above-combined.		(# 1)

If there is anything else I can do for you, do not hesitate to write.



Galen V. Govier

GVG/gg

This document does not automatically mean that I have inspected the vehicle, or that I am stating it is an all numbers matching vehicle.

Keep the Faith



N65	TORQUE DRIVE FAN	1971 BS2*H	
N65	7 Blade Engine Fan,		2863216
	Torque Drive Fan Unit B & E-BODY		3462112
	Standard on 'Cuda 340.		
N96	CARB FRESH AIR PKG - SHAKER HOOD	1971 BS2*H	
J25	Variable Speed Windshield Wipers,		
	- 'Cuda 340 nameplates.		
	Black Textured Bubble typical of 1971,		
	Optional on 'Cuda 340, 383 & 440-6,		
S13	RALLYE SUSPENSION	1971 BS2*H	
•	Front Sway Bar,		3835862
	-.88" Diameter,		
•	Rear Sway Bar,		3402049
	-.75" Diameter,		
•	Front Shock Absorbers 225 318 340 383		3402417
•	Rear Shock Absorbers 340 383		3402415
•	H.D. Torsion Bars,		
	-RH PAINT MARKINGS: ALUMINUM (1)		1857778
	-LH PAINT MARKINGS: ALUMINUM (2)		1857779
	-.90" Diameter,		
	-41" Length,		
•	H.D. Rear Springs,		
	-4½ Leaf-Hardtop,		3400044
	Standard on 'Cuda 340.		
Y14	SOLD CAR	1971 BS2*H	
	This is a vehicle that is ordered to a customers liking,		
	then the order is sent back to Chrysler for Assembly.		
	NOTE: This is not the same as a Special Order.		

D21	4-SPEED MANUAL TRANSMISSION	1971 BS2*H	
	A833 New Process 23-Spline		
D53	3.23:1 Gear Ratio 8.75" Axle (Std w/340 & 383 CID),		
D91	Sure-Grip Differential OPTIONAL W/3.23 RATIO		
	23 Spline Input w/10.5" Clutch (1971 340 V8)		757
	2.47:1 low gear w/23 Spline,		
	"HURST" Shifter & Linkage,		
	Dash Mounted Reverse Light.		
	Optional on 'Cuda.		
E55	340 4BBL ENGINE:	1971 BS2*H	
	37 Amp Alternator,		
	46 Amp Battery,		
N41	Dual Exhaust System,		
N42	Chrome Exhaust Tips,		
26	Radiator - 26" Width,	w/ALL exc	3443969
	Forged Crankshaft,		
	Unsilenced Air Cleaner,		
	Bore & Stroke: 4.04" x 3.31",		
	Compression Ratio: 10.5:1,		
	Firing Order: 1-8-4-3-6-5-7-2		
	Fuel Recommended: Premium		
	Horsepower @ r.p.m.-Gross: 275 @ 5000,		
	Horsepower @ r.p.m.-Net: 235 @ 5000,		
	Torque, lb.-ft. @ r.p.m.-Gross: 340 @ 3200,		
	Torque, lb.-ft. @ r.p.m.-Net: 310 @ 3200,		
	Engine ID: GW or GM340P.		
	Engine Color: Orange UP TO (Mid- APR) No further data available.		
	Optional on 'Cuda.		

CONTINUED

### G Series 1971 Basic Car Prices

**BS23** CUDA 8 CYL. 2 DOOR HARDTOP 1971 US \$ 3,134.00

THE FOLLOWING ITEMS OF EQUIPMENT  
ARE STANDARD ON THIS MODEL- BUCKET  
SEATS, 383 4BBL ENGINE, WIDE OVAL  
WHITE SIDEWALL TIRES, HEAVY DUTY  
SUSPENSION, HEAVY DUTY 11 INCH  
BRAKES, HOOD PINS, 3 SPEED MANUAL  
FLOOR SHIFT TRANSMISSION, DAY/MIGHT  
INSIDE MIRROR, CIGAR LIGHTER, DUAL  
HORNS, PERFORMANCE HOOD, FIRM RIDE  
SHOCK ABSORBERS.

\* S13 OR S15.  
SHIPPING WEIGHT: 3475#  
WHEELBASE: 108.0"  
FUEL TANK CAPACITY: 18 Gallons.

### G Series 1971 Accessory Group

**STD** INSTRUMENT CLUSTER: 1971 BS2\*H

120 MPH Speedometer,  
Fuel Gauge,  
Temperature Gauge,  
Alternator Gauge,  
Low Oil Pressure Lite,

**J21** Clock-Optional,  
Toggle Switches are color-coded:  
-White for Headlights,  
-Yellow for panel lights,  
-Blue for windshield wipers, and  
-Blue for optional rear defogger.  
Standard on 'Cuda and will not be coded.

**B11** HD DRUM BRAKES 1971 BS2\*H

11x3.0"-Drum Brakes-Front,  
11x2.5"-Drum Brakes-Rear,  
Eff. lining area: 234.1 sq. in.  
Total swept area: 380.1 sq. in.  
Standard on 'Cuda.

CONTINUED

# 1971 PLYMOUTH 'Cuda 2 Door Hardtop

+ N96 R11 R31 26 EN2 +
M21 M25 M31 M88 N41 N42
EV2 U C55 G36 J25 J45
EV2 H6X9 000 B09 040913
E55 D21 BS23 H1B 206337

The Fender Tag is read from Left to Right, and from Bottom to Top

E55	Engine: 340 1-4bbl 275hp V8 340 FOUR BARREL
D21	Transmission: A833 4-Speed Manual HURST-PISTOL GRIP
BS	Car Line: PLYMOUTH 'Cuda
23	Body Type: 2 Door Hardtop
H	Engine: 340 1-4bbl 275hp V8
1	Model Year: 1971 G-SERIES
B	Assembly Plant: Hamtramck, MI
206337	Assembly Plant Sequential Number
EV2	Body Paint: Tor Red HI IMPACT
H	Trim Grade: High
6	Front Seat: Vinyl Buckets
X9	Interior: Black
000	Upper Door Frame Paint: None
B09	Scheduled Production Date: Monday November 09, 1970
040913	Vehicle Order Number
EV2	Roof Paint: Tor Red HI IMPACT
U	Build to Specifications for: United States Order
C55	Front Bucket Seats
G36	Outside LR REM/RH MAN-PNT RAC Mirror
J25	Variable Speed Wipers w/Electric Washers
J45	Hood Pins
M21	Drip Rail Mouldings
M25	Body Sill Mouldings
M31	Body Belt Mouldings
M88	Rear Deck Moulding Treatment
N41	Dual Exhaust System
N42	Chrome Exhaust Tips
N96	Carb Fresh Air Package SHAKER HOOD
R11	Radio: Music Master AM
R31	Rear Speaker: Mono
26	Radiator - 26" Width
EN2	End of Fender Tag Codes DESIGNATED LINE 2 BUILD

Decoded for: Fred Bishop  
719 Washington Court  
Grand Junction, CO 81503

Decoded by: Galen V. Govier  
37260 Sand Burr Lane  
Prairie du Chien, WI 53821-8869

Note: A decoding of a fender tag or broadcast sheet by GTS/Galen Govier does not automatically mean that it is an all numbers matching vehicle. For that reason, unless this decoding is in addition to an Appraisal, Visual Inspection or Validation I will not guarantee it has all the factory installed equipment on the vehicle.

Thank You

August 24, 2004



August 24, 2004



37260 Sand Burr Lane  
Prairie du Chien, WI 53821-8869 U.S.A.  
[www.gvgovier.com](http://www.gvgovier.com)  
[gvgovier@mhtc.net](mailto:gvgovier@mhtc.net)

Fred Bishop  
719 Washington Court  
Grand Junction, CO 81503

No. 040824

Dear Fred,

Enclosed is the summary of the Visual Inspection on the **1971 PLYMOUTH 'Cuda 2 Door Hardtop** VIN **BS23H1B206337** I did for you on **Aug 24, 2004**.

I have enclosed a "gray sheet" with names and numbers of businesses that have most items to replace any items that are missing or incorrect.

This Visual Inspection also includes a 10-category written report, a decoding of the fender tag when possible, and a Chrysler Registry document. It does not include a decoding of the Broadcast Sheet.

#### NUMBERS MATCHING

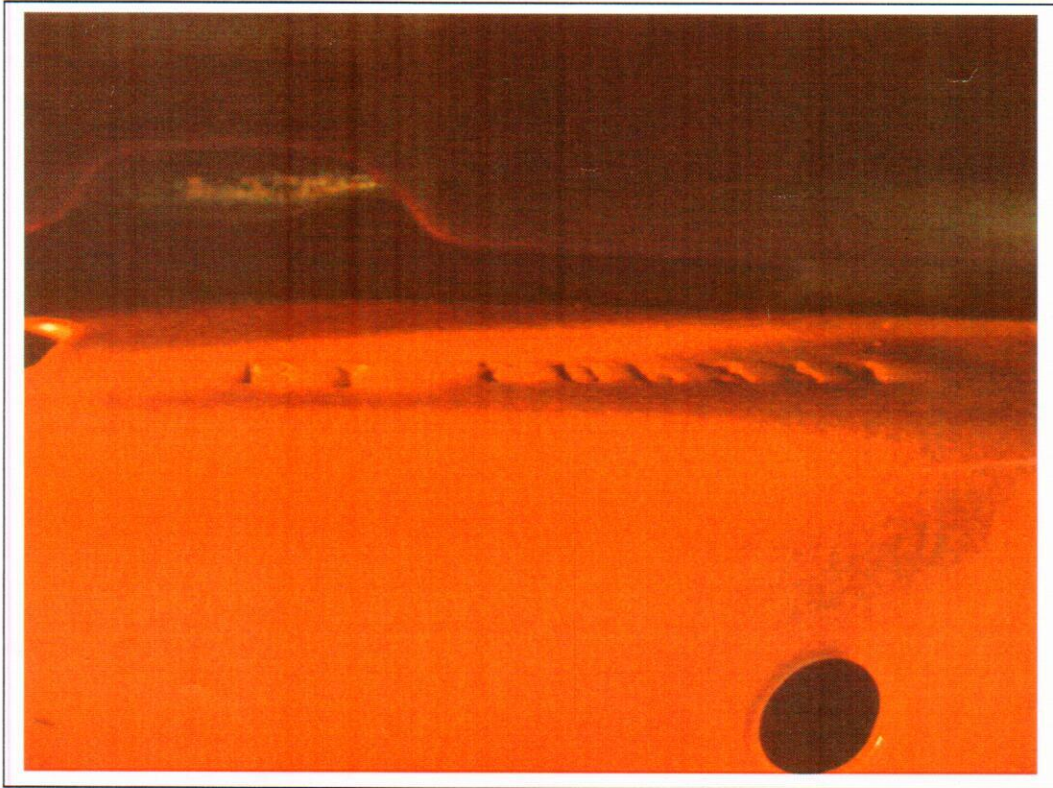
On your **1971** Model Year vehicle, there are **7** VIN's on the vehicle that determine "Numbers Matching", a Broadcast Sheet is a bonus, if found. The warranty brochure and owners manual are important documents.

1. Dash VIN - Found on drivers side of the dash, visible through the windshield.

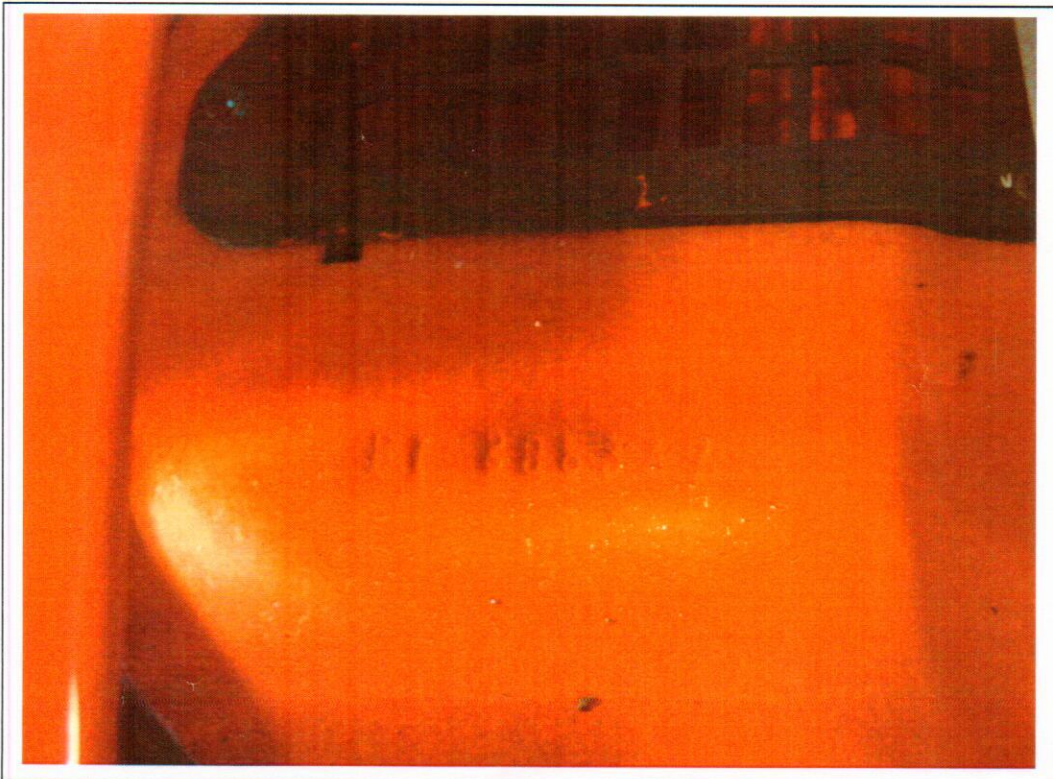




2. Primary Body Code-generally found on the backside of the Radiator support.
  - A. Body Code Numbers include Assembly Plant, Model Year and last 6 digits of the VIN.  
The meaning of the Body Codes is explained in the enclosed decoding of the Fender Tag.



3. Secondary Body Code-generally found on the cowl, between the master cylinder and the windshield.
  - A. Body Code Numbers include Assembly Plant, Model Year and last 6 digits of the VIN.

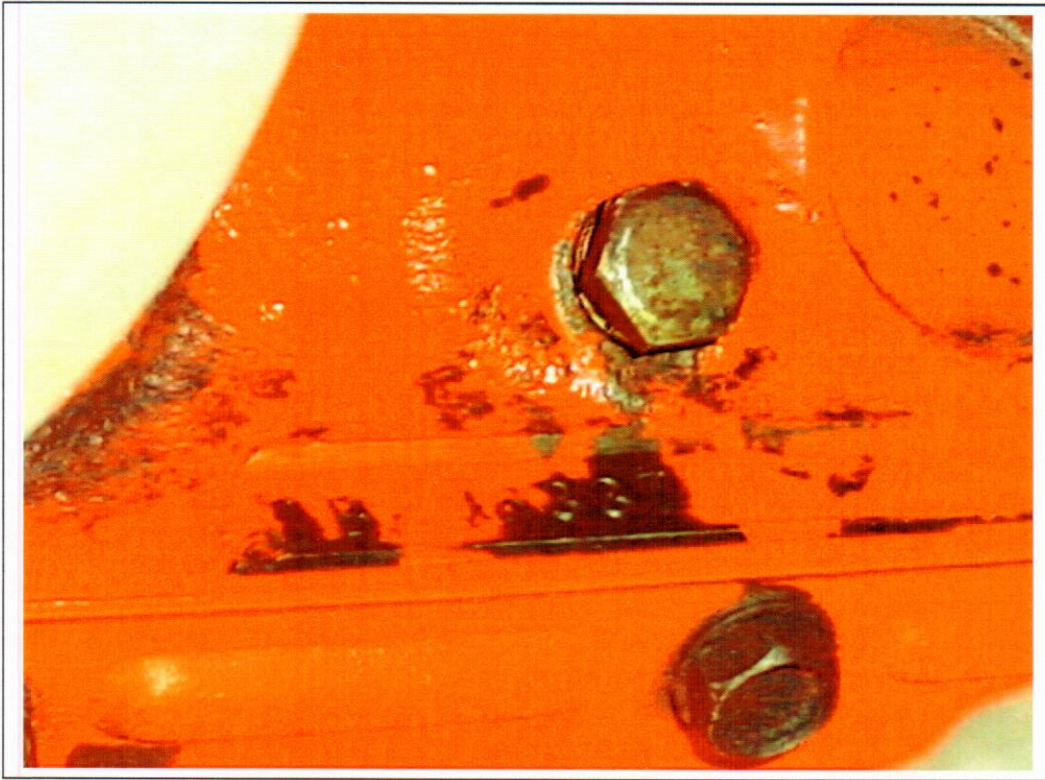




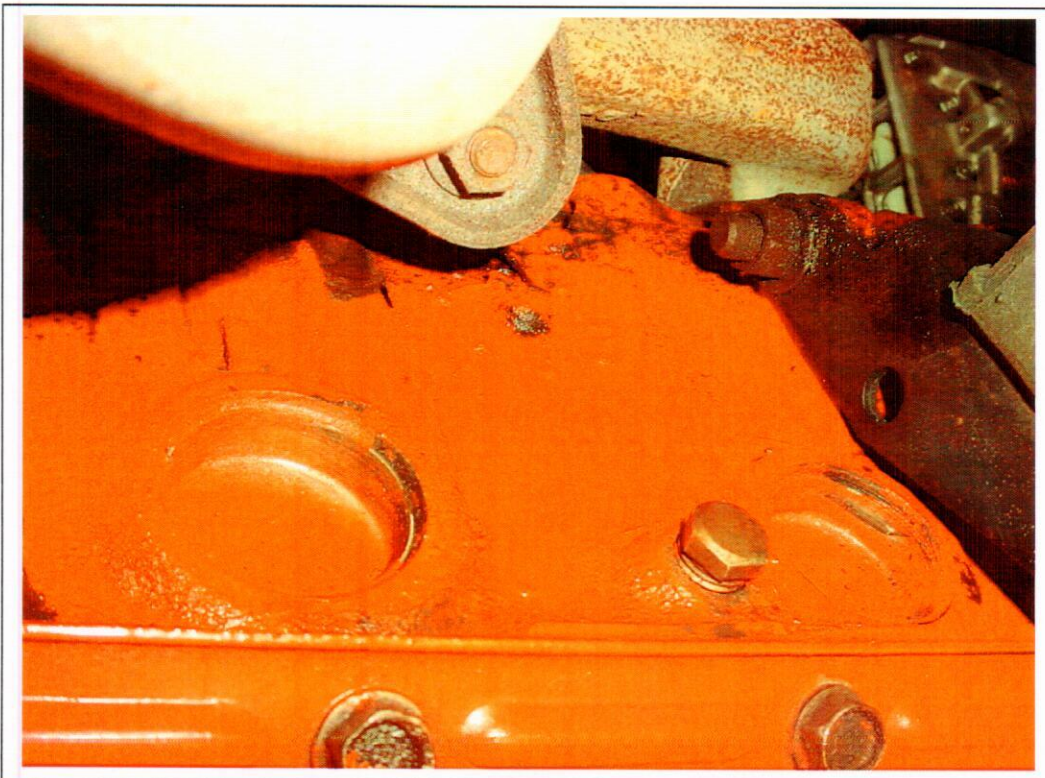




5. VIN stamped on Engine-found on passenger side lower block. I have verified the numbers.  
This is the original engine for the vehicle.



- A. The casting number, casting date and clock are found on either side of the block.  
The casting date is: 7-1-70.





- B. The casting number is found on the drivers' side of the block behind the starter.  
The casting number is: 2780930-340-6.



340 CID. There is also the engine ID stamped on the front of the block below the drivers cylinder head. GW340 P 3181 0423. The G = Series 1971, W = Windsor Engine Plant, 340 = Cubic Inch Displ, P = Premium Engine, 3357 = October 06, 1970 Engine Assembly Date and 0115 = Sequence Number.

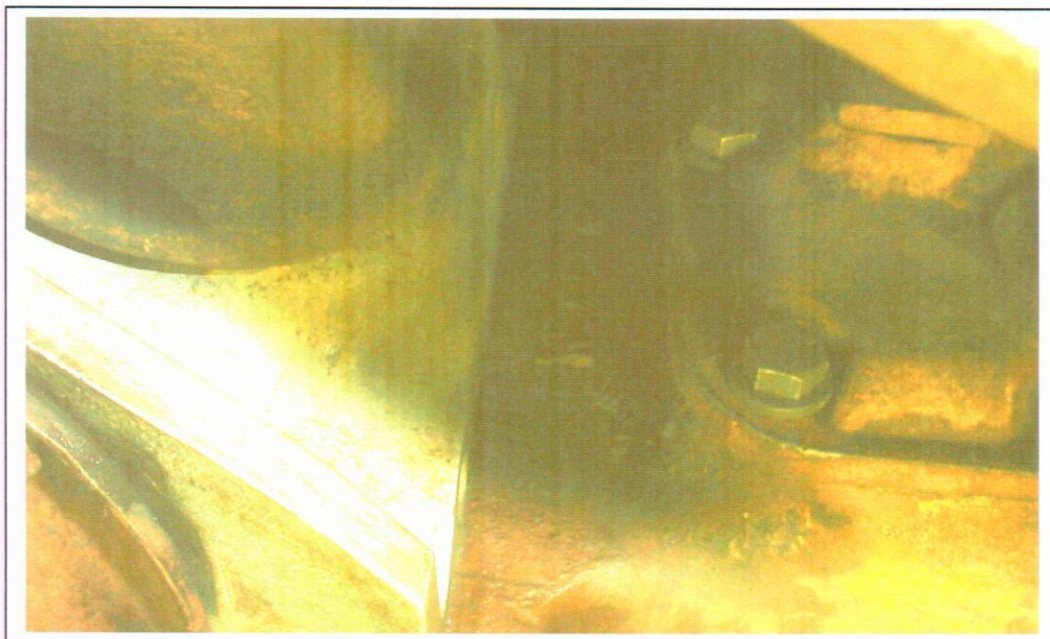




6. VIN stamped on Transmission-found on passenger forward side of the Manual Transmission case.  
A. The number 3294 is the 10K date code, which decodes as August 04, 1970. The 0084 is a sequence number. You can see the last 8 digits of the VIN on the top row.  
[This is the original transmission for the vehicle.](#)



- A. The casting date of the 4-Speed manual transmission is found on the drivers' side forward of the side cover. The date looks to be 1X13 (January 13, 1970).

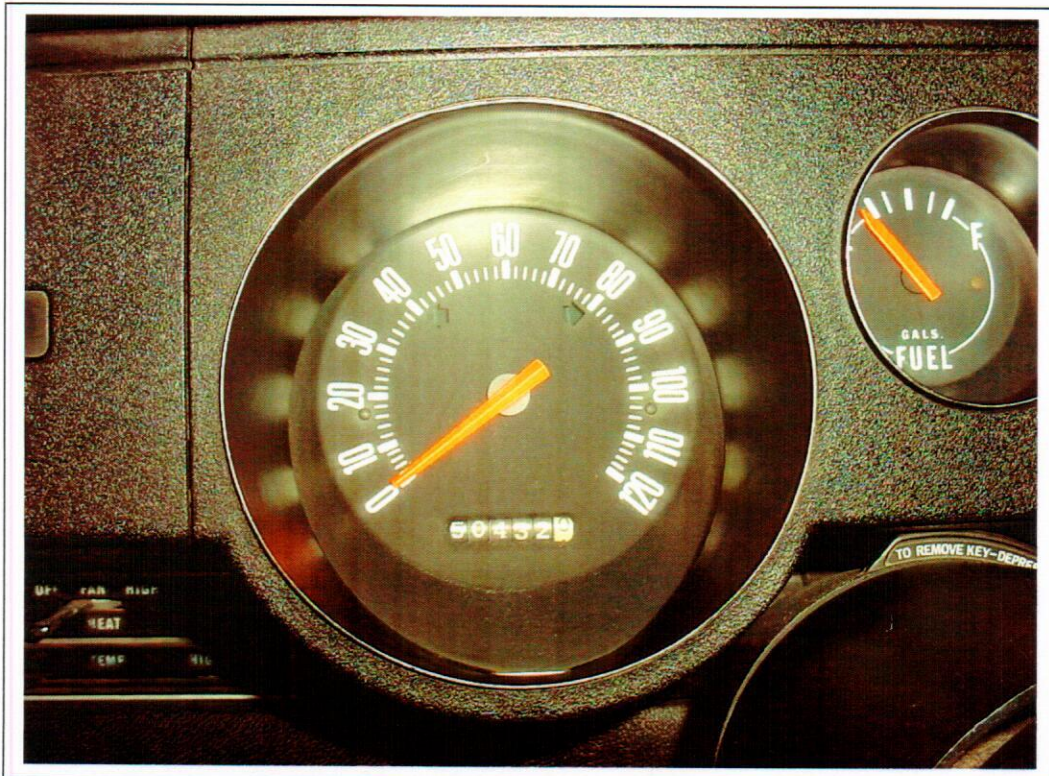




7. Beginning in 1970, there should be a Door VIN decal-found on the backside of the driver's door. It will tell the month and year of manufacture. At the Hamtramck Plant it is mounted horizontally. The decal is missing.



Enclosed is a photo of the Speedometer/Odometer, current mileage shows: 50,432 miles.

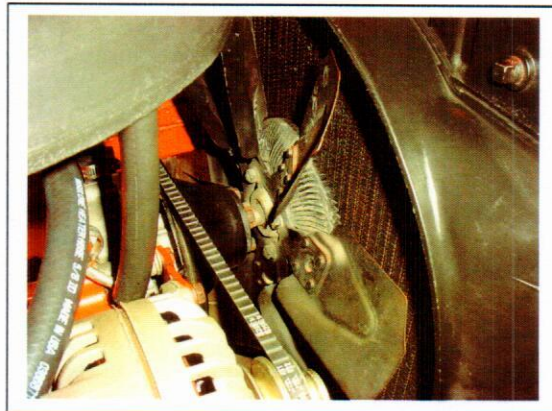




Shaker Air Cleaner.



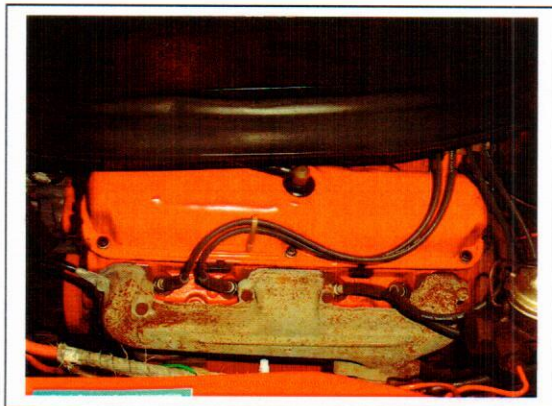
Fan blade & clutch unit.



RH valve cover.



LH valve cover.



Intake/Choke/Fuel line.

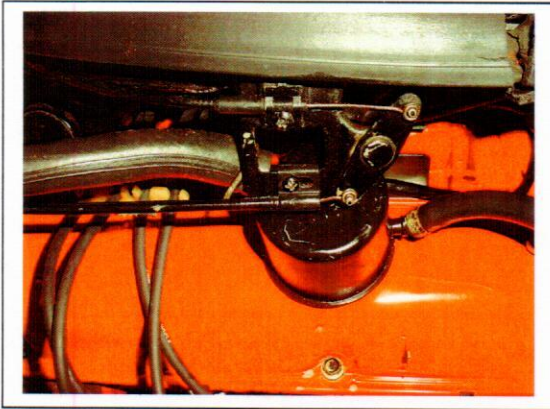


Carburetors/Idle solenoid/Linkage.





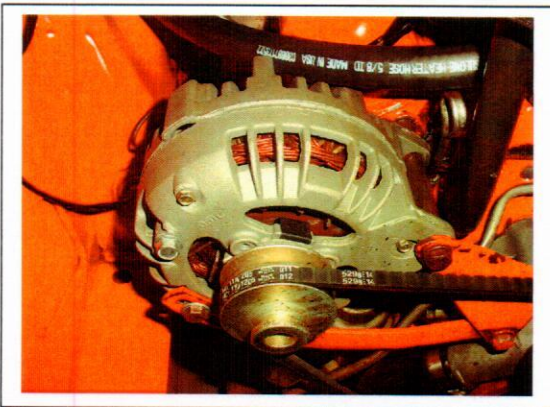
Valve cover breather.



PCV valve.



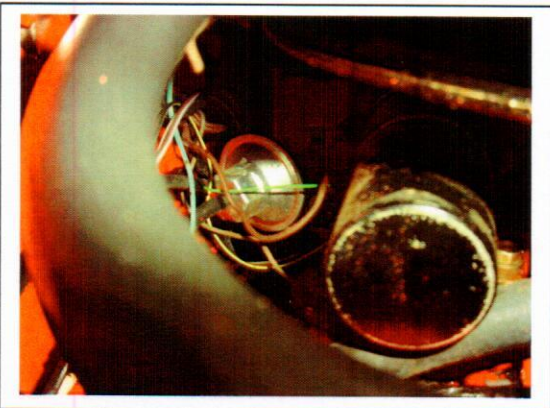
Alternator.



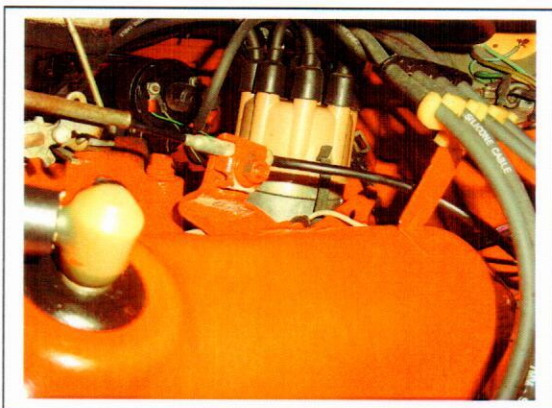
Water pump/Housing.



Distributor & Ignition coil.

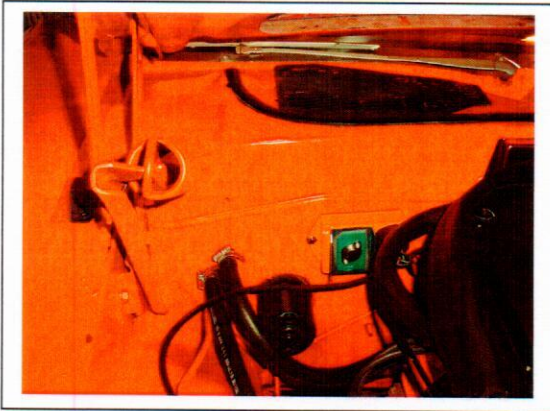


Throttle cable & bracket.

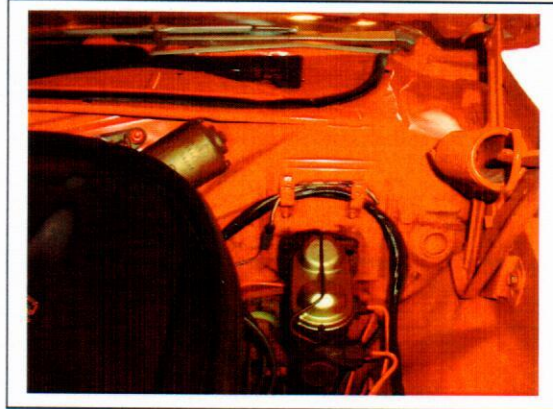




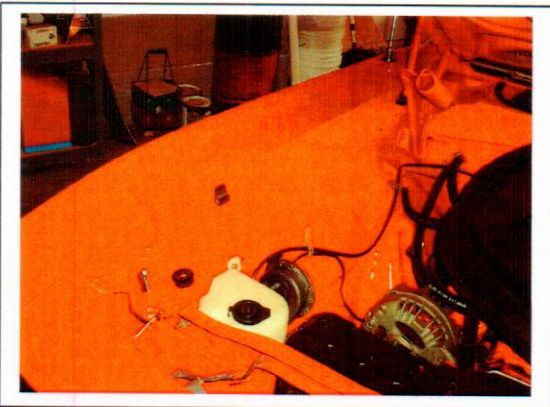
RH firewall



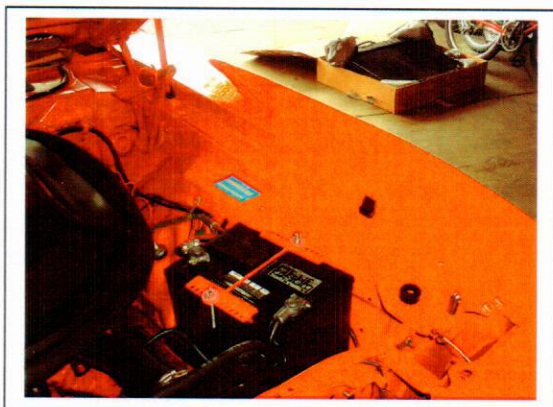
LH firewall.



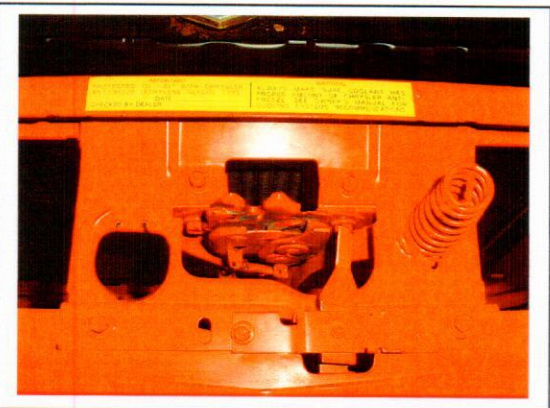
RH inner fender.



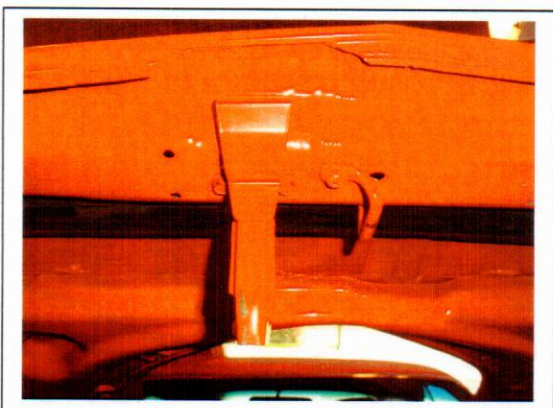
LH inner fender.



Hood latch on body.



Hood latch on hood.





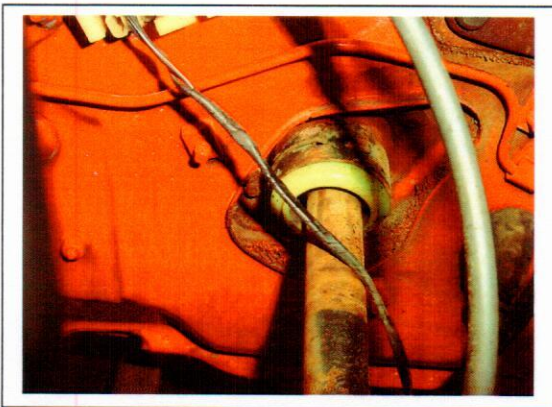
Correct 26" width radiator-is out of car.



Washer reservoir.



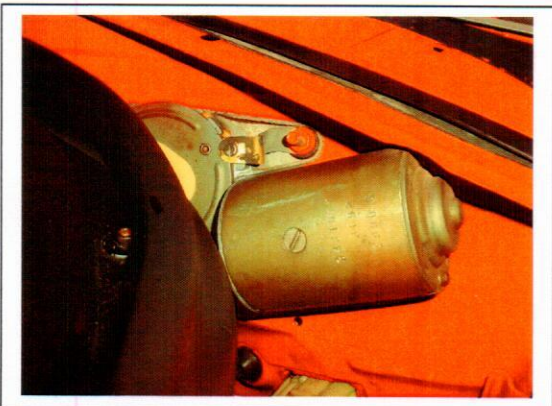
Lower/Power steering pump/column.



Steering gear.



Wiper motor.



Generic Battery.





RH lower control arm.



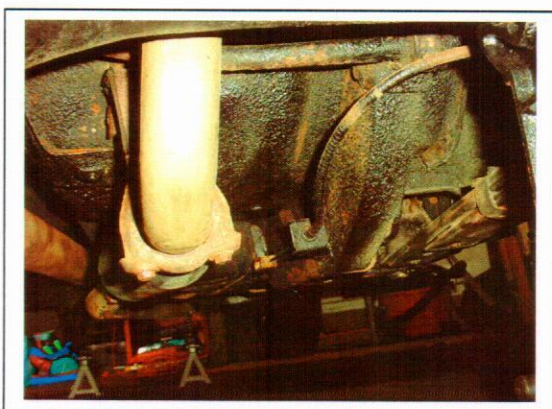
LH lower control arm.



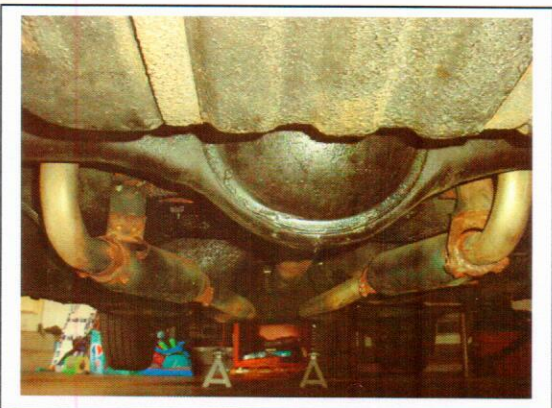
K-Frame/Oil pan/Exhaust system. (Front)



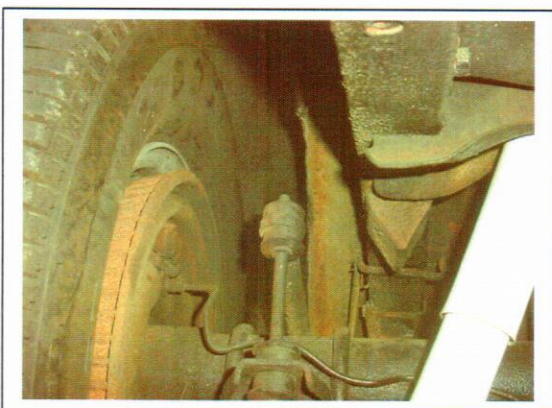
Glasspacks/Chrome tips. (No resonators)



8.75" rear axle



Axle to frame bumper.





Has original spare, but jack assembly is missing.

Emissions tube should not be painted.



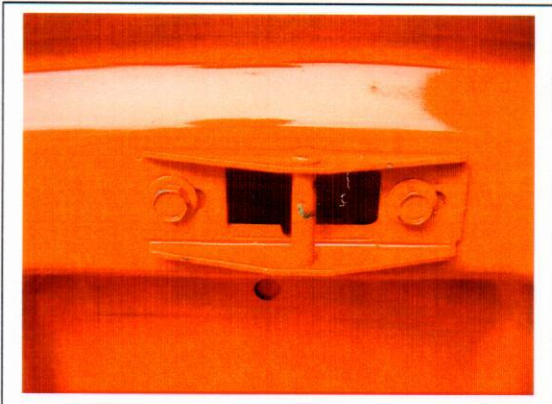
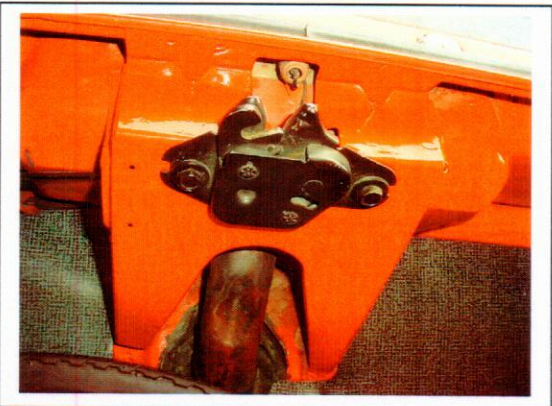
LH quarter panel/floor.

RH quarter panel/mat.



Trunk latch on body.

Trunk latch on lid.

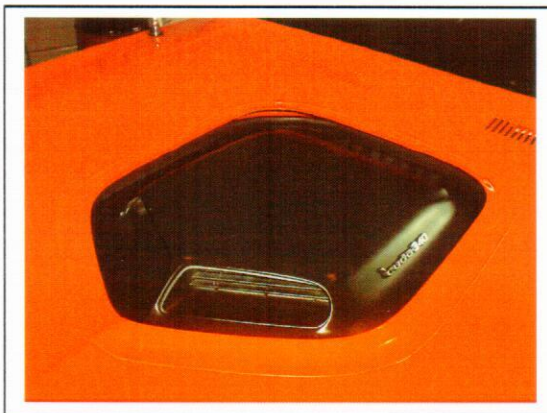




1971 Cuda 340 Shaker emblem.



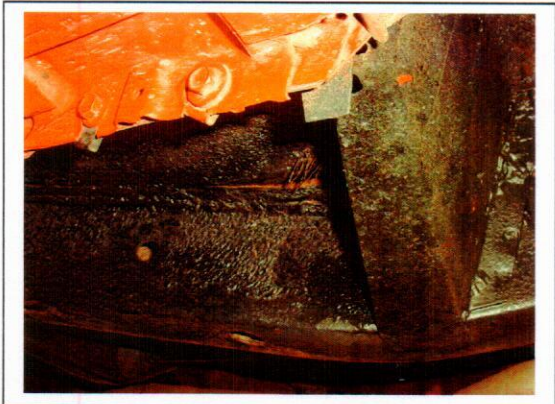
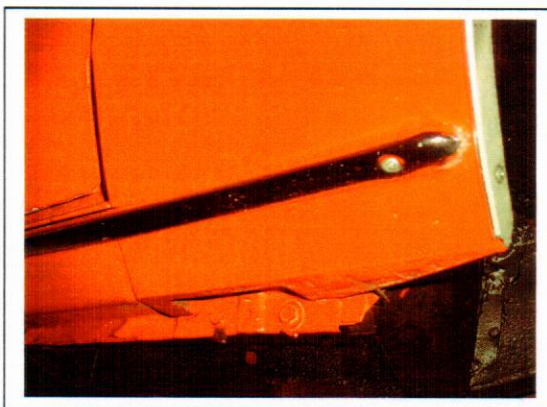
Black shaker bubble in 1971.



Incorrect antenna.



Should be black below moulding.



No photo.