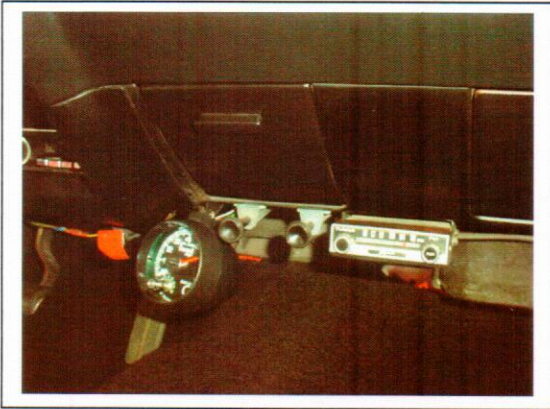
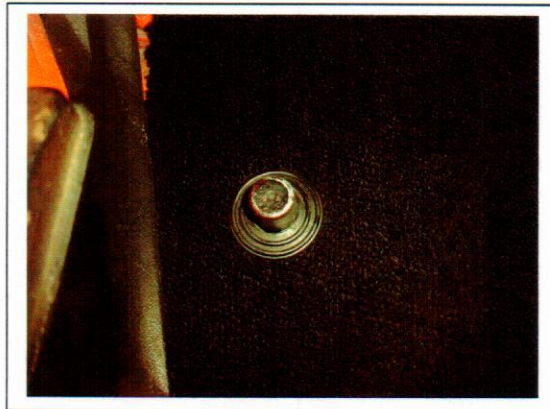


Added Tachometer & FM Converter.



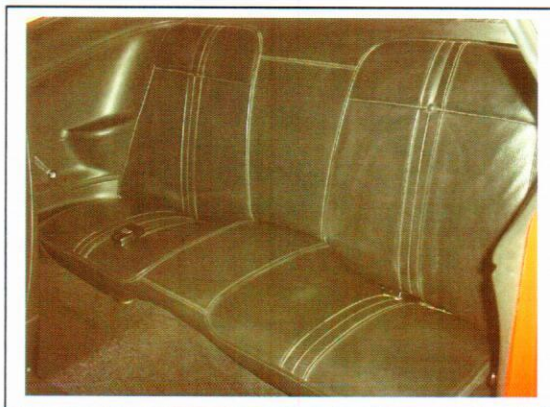
New carpet w/grommet added.



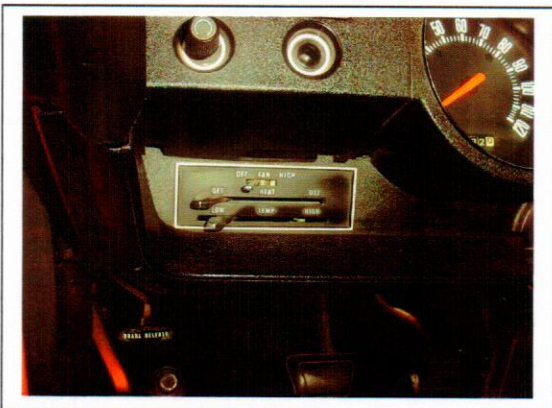
1971 Seat belt pocket.



Rear Seat.



Heater controls.

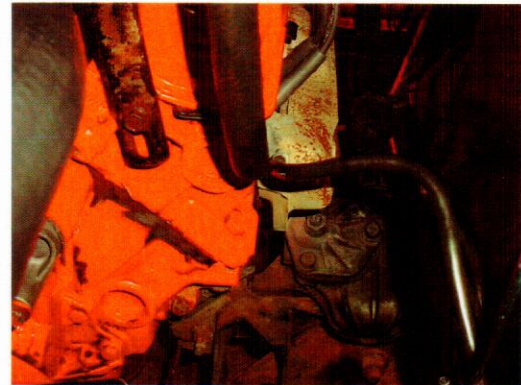


1971 & newer steering column.



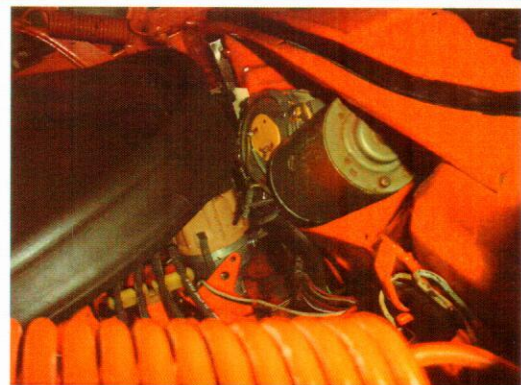


Negative battery cable at exhaust manifold=incorrect. Electronic Ignition box.



Wiper motor.

Black heater blower motor?



Correct/original master cylinder.

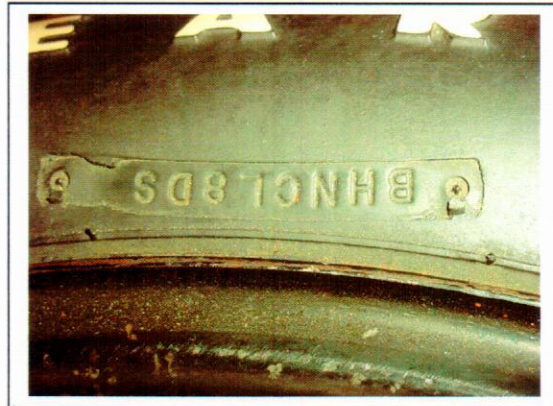
Cap should be cadmium plated, not black.





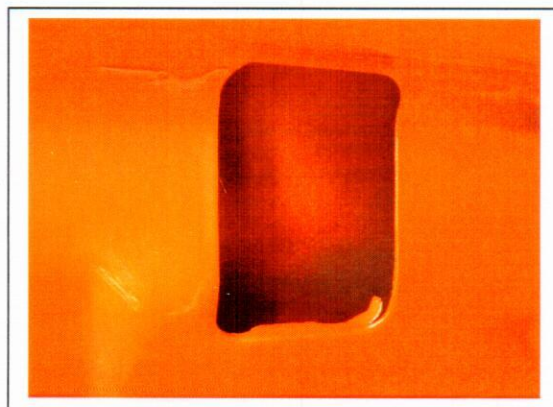
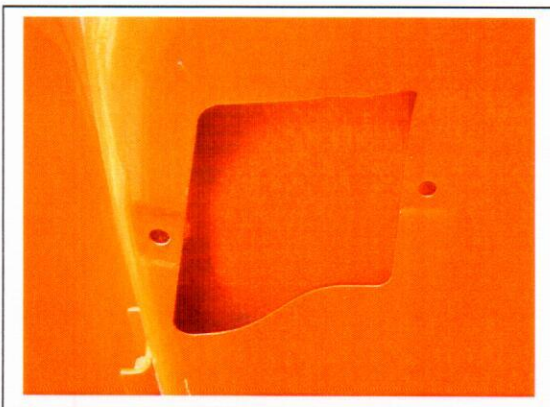
K-1-0 7X16 6.0.

BH=Sept 12, 1970. NC=Jackson Plant.



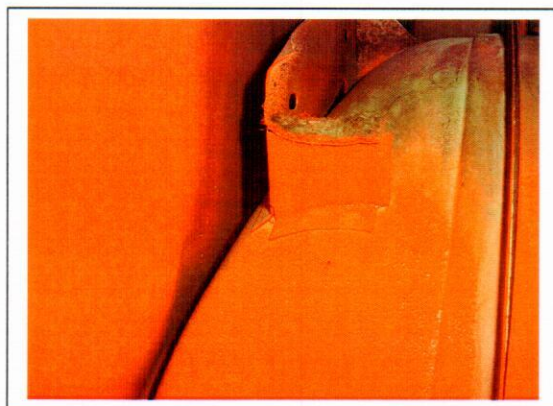
1971 Decklid.

1970-71 AAR Cuda punched hole.



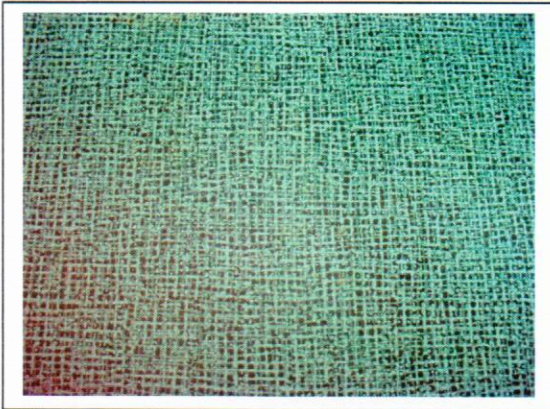
Bumper jack is missing.

Upper jack rest felt.





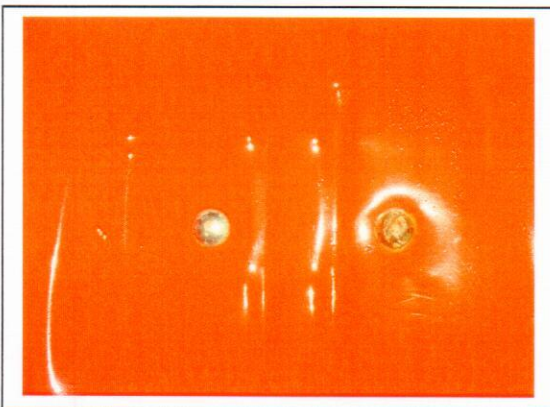
Reproduction rubber floor mat.



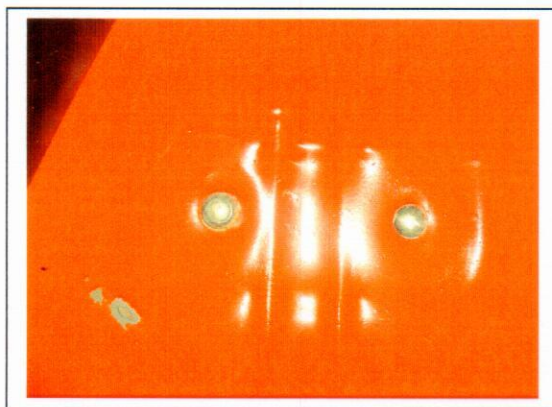
Tube should not be painted.



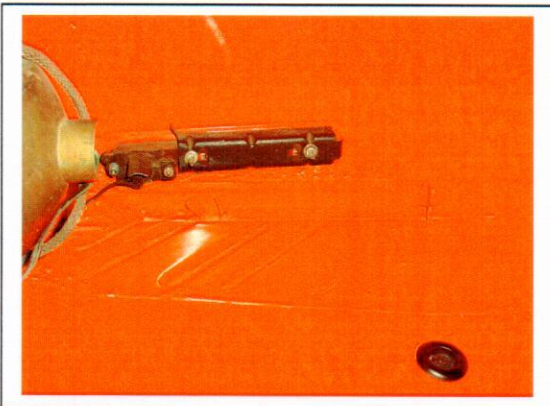
LH exhaust heat shield bolt.



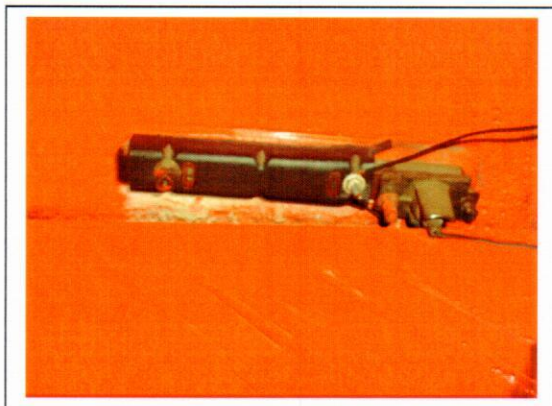
RH exhaust heat shield bolt.



LH replacement quarter panel.



RH replacement quarter panel.

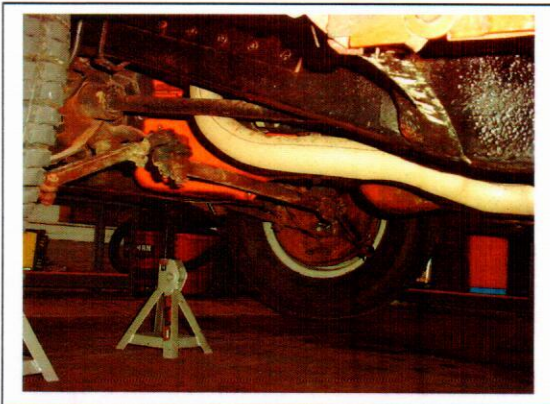




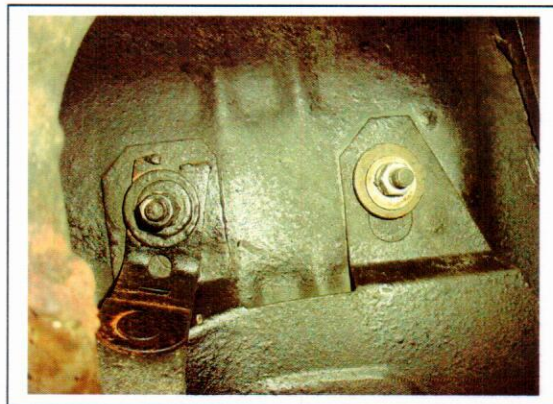
Lower valance on 1971 Cuda.



Oil pan.



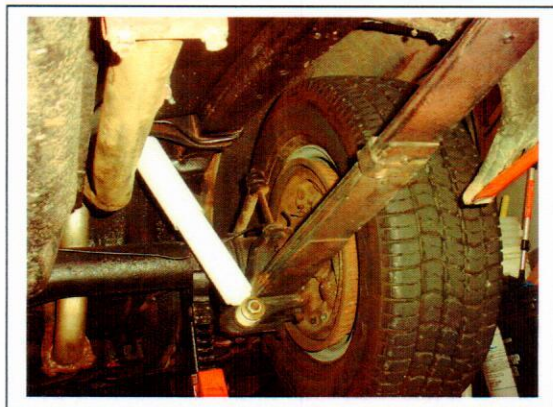
Exhaust heat shield bolts.



LH rear shock.



RH rear shock.





Axle to frame bumper.



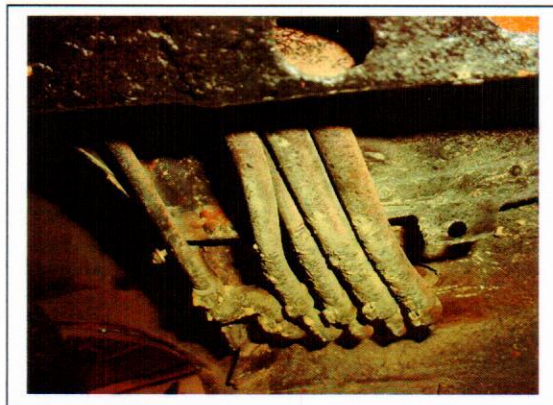
Axle to frame bumper.



Glasspack muffler.



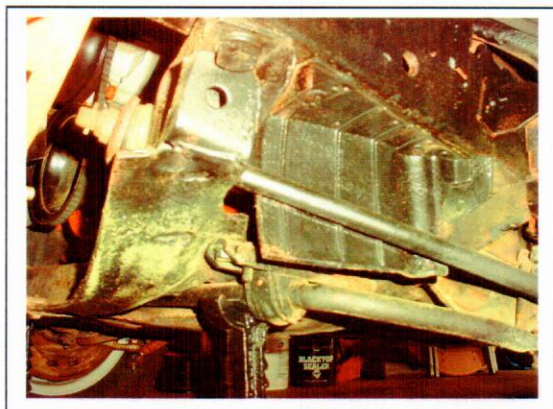
No splash shield below hoses.



RH K-frame splash shield.

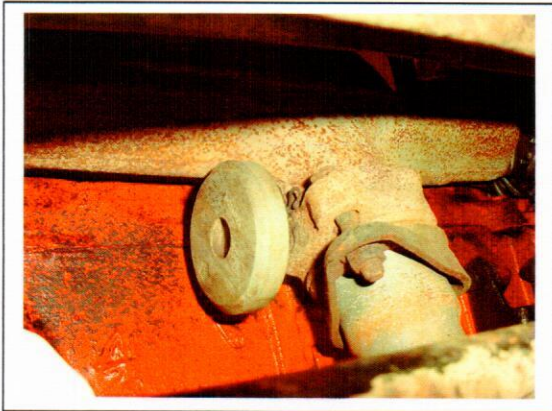


LH K-frame splash shield.





Heat riser counterbalance.



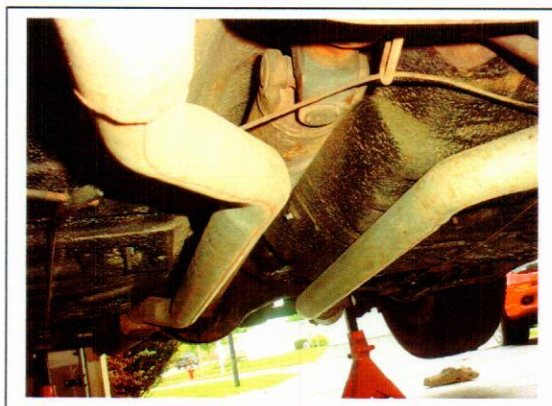
1971 cuda gills.



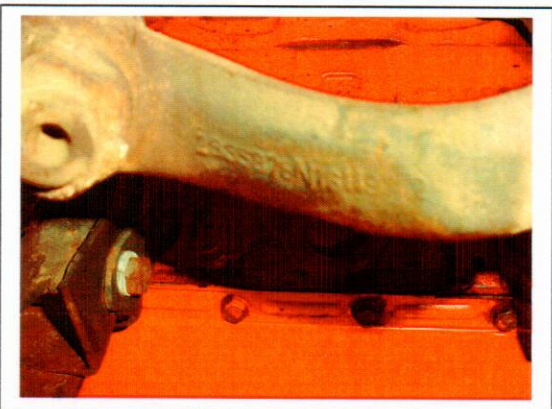
1971 Transmission mount.



Dual exhaust/driveshaft.



Pitman arm.



Starter dated 1971.

