

Specifications - LHB09 Refinado LED Linear Light

Version: 3.0



Electrical Information					
Model No.	LHB09-100	LHB09-150	LHB09-200	LHB09-300	LHB09-400
Power Consumption(±5%)	100W	150W	200W	300W	400W
Power Supply	SOSEN				
Input Voltage	100-277 VAC / 277-480 VAC				100-277 VAC
Power Factor	>0.95				
Surge Protection	6kV line-line, 10kV line-earth				
Driver Type	Constant Current (CC)				
Control	Dimmable / ZigBee Control				
	Microwave sensor / PIR sensor				

Optic Information					
LED Type	LED 3030				
Luminous Flux (±10%)	14000LM	21000LM	28000LM	42000LM	56000LM
Efficacy(5000K Ra70)	140LM/W				
Correlated Color Temperature	4000K, 5000K				
Color Rendering Index	Ra80				
Beam Angle	L04501, L04502, L00401, L00402, L00403				

Description

Refined with IP66 equal for indoor & outdoor application, it continues to improve integral and customized intelligent control: PIR Sensor, Microwave Motion Sensor, photocell, Zigbee, as well as DALI, emergency function for huge energy saving. Further more, we could do some customization, such as 180LM/W, LED power adjustable, CCT select-able, Anti-glare grille lens, wire guard...etc.

Key Features

- 100W/150W/200W/300W/400W
- 140lm/W
- Low UGR
- IP66 IK10 rated
- Specialized asymmetrical optic 40**140° for aisle, workshop and warehouse.
- Smart control all in one, including PIR, Microwave motion sensor, photocell, Zigbee, Emergency.
- Pendant mounting, pipe mounting for multiple installation.

Applications

- Indoor and outdoor high ceiling application
- Warehouse
- Factory
- Industrial facility
- Exhibition centers
- Stadiums
- Toll stations

* Lumen output and light distribution are only for reference. Not all product variations listed on this page are DLC Standard/Premium qualified. Visit www.designlights.org/search to confirm qualification.

Dimensions and Mount

Product Dimension	340×325×60mm (13.38×12.8×2.36")		680×325×60 (26.77×12.8×2.36")		1020×325×60 (40.16×12.8×2.36")
Luminaire Net Weight	3.5±0.3kg (7.72±0.66Lbs)	3.7±0.3kg (8.16±0.66Lbs)	6.7±0.3kg (14.77±0.66Lbs)	7.8±0.3kg (17.20±0.66Lbs)	10.7±0.3kg (23.59±0.66Lbs)
Export Carton Size	420×385×135mm (16.54×15.16×5.31")		760×385×135mm (29.92×15.16×5.31")		1100×385×135mm (43.31×15.16×5.31")
Gross Weight	4.2±0.3kg (9.26±0.66Lbs)	4.4±0.3kg (9.70±0.66Lbs)	7.5±0.3kg (16.53±0.66Lbs)	8.6±0.3kg (18.96±0.66Lbs)	11.65±0.3kg (25.68±0.66Lbs)
Mounting Option	Suspension mounting Ceiling bracket & ±60deg rotatable bracket mounting				
Material	Aluminum Alloy Polycarbonate Optical Lens				
Finish	Powder Coating				
Fixture Color	Silver gray				
EPA	NA				
IK Rating	IK10				
IP Rating	IP66				

Lifespan and Warranty

Operating Temperature	-30°C to + 50°C (-22°F to 122°F)
Life Time of LED @Ta=25°C	40,000hrs-L90
	82,000hrs-L80
	131,000hrs-L70
Warranty	5 Years

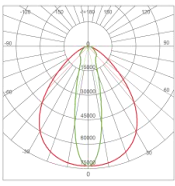
New Features

- Integral Emergency backup, illumination time 90 mins.
- Field-adjustable output for optional.
- Ball test approved.
- Play and plug sensor, external sensor with brackets is for optional
- Easily linkable
- Higher efficacy up to 180lm/w for optional.

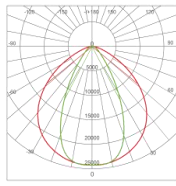
*** Please consult us for details.**

Photometry

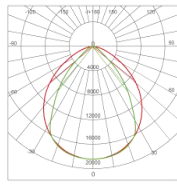
Strip optic lens



L00401
25x85°

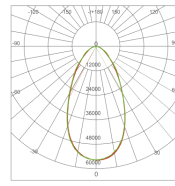


L00402
60x100°

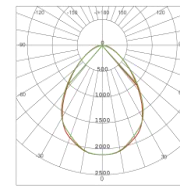


L00403
80x100°

Dotted optic lens

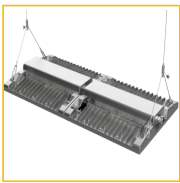


L04501
60°

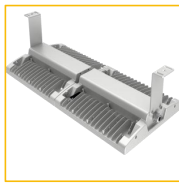


L04502
90°

Mounting Options



Loop mounting

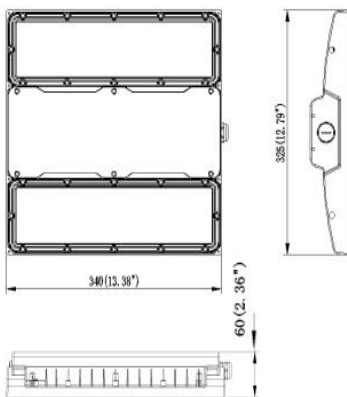


Ceiling mounting

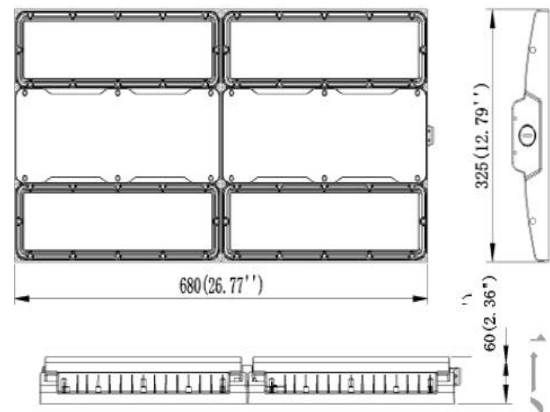


±60° rotatable
bracket mounting

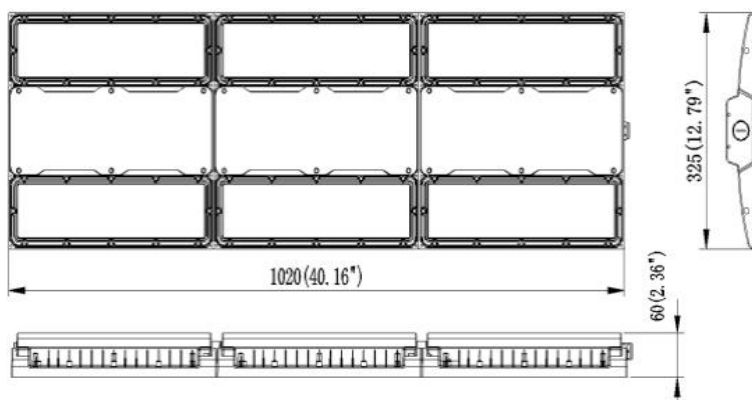
Dimensions



100W/150W



200W/300W



400W

Accessories



Safety line
Stainless steel materials
Code: SL-L09-01



±60deg rotatable bracket
SPCC materials.
Code: BC-L09-01



Ceiling mount bracket
SPCC materials.
Code: BC-L09-02



Microwave motion sensor
120-277Vac input, IP65 rating,
max detect height is 15m.
Remote control



PIR sensor
120-277Vac input, IP65 rating,
max detect height is 15m.



Daylight sensor
1-10V DC input, IP20 rating,
daylight Harvesting function.



Zigbee wireless control
1pcs for each luminaire.
Zigbee gateway
1pcs can control 100pcs fixtures.



Zigbee daylight sensor
An optional sensor control for
Zigbee system, 100-277Vac input,
IP65 rating.



Zigbee microwave motion sensor
An optional sensor control for Zigbee
system, 100-277Vac input, IP65 rating.



Optic lens
PC materials.
Code: please refer to Photometry