

ORTHODONTICS

Labial Bow Options



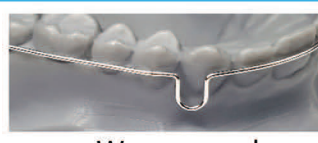
Hawley Labial Bow



Labial Bow Acrylic



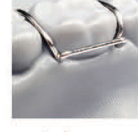
Flat Bow



Wraparound



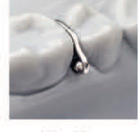
Clasps



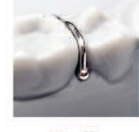
Adams Clasps



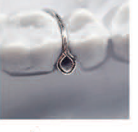
Crozat



Ball Clasps 0.28



Ball Clasps 0.32



Arrow



C-Clasp



Soldered C-Clasp



Buccal Tube Clasps

Spring Options



Z-Spring



Z-Spring w/ Helix



Bloore



Finger Spring



Finger Spring w/Helix

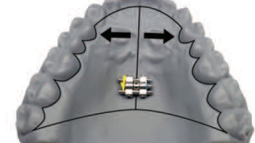


Mushroom



Close Clip

Expansion Screws



Transverse



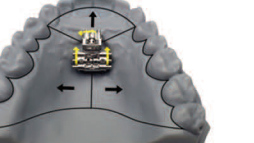
Sagittal



One Tooth



Fan Type



3-Way

Digital (Nylon) Expansion - New Designs Coming Soon!



RETAINERS

Used to maintain/hold position of teeth or used to make minor tooth movements/corrections



Maxillary Hawley



Mandibular Hawley



Maxillary Wraparound



Mandibular Wrap-around



One-Piece Warp-around



Invisible Retainer

SPRING ALIGNERS

Designed for minor anterior tooth movements by resetting the teeth prior to appliance fabrication. Can be fabricated to upper and/or lower arches.



Anterior Spring Aligner



Modified Spring Aligner



Super Spring Aligner

The Anterior spring aligner is a compact spring retainer used to correct minor rotation and movement of the anterior teeth or to prevent relapse.

The Modified Spring Aligner is capable of anterior relapse correction while maintaining posterior tooth position

The addition of a coil spring to the lingual of the Super Spring Aligner provide maximum force in correction.

EXPANSION APPLIANCES

Designed to widen and/or lengthen Mx/Md arches

Swartz Upper and Lower

Designed to widen arches



Sagittal Upper & Lower

Designed to lengthen the arch by distalizing the molars or driving the anterior section forward



Three Way Appliance

Used for both lateral and anterior arch development. It has a single screw which can be opened in three different directions.



Removable Fan Screw

Designed to develop the bicuspid area of the arch while maintaining molar width.



Removable Fan Screw

Designed to develop the bicuspid area of the arch while maintaining molar width.



Removable Fan Screw

Designed to develop the bicuspid area of the arch while maintaining molar width.



Removable Fan Screw

Designed to develop the bicuspid area of the arch while maintaining molar width.



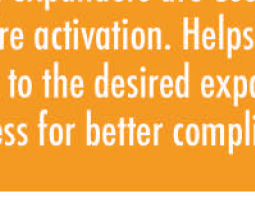
Removable Fan Screw

Designed to develop the bicuspid area of the arch while maintaining molar width.



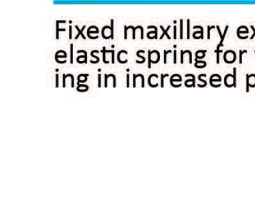
Removable Fan Screw

Designed to develop the bicuspid area of the arch while maintaining molar width.



Removable Fan Screw

Designed to develop the bicuspid area of the arch while maintaining molar width.



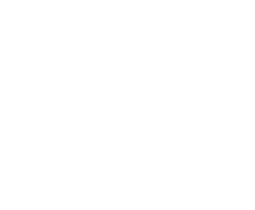
Removable Fan Screw

Designed to develop the bicuspid area of the arch while maintaining molar width.



Removable Fan Screw

Designed to develop the bicuspid area of the arch while maintaining molar width.



Removable Fan Screw

Designed to develop the bicuspid area of the arch while maintaining molar width.



Removable Fan Screw

Designed to develop the bicuspid area of the arch while maintaining molar width.



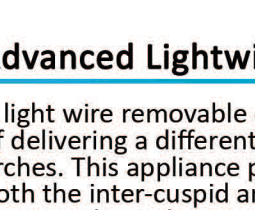
Removable Fan Screw

Designed to develop the bicuspid area of the arch while maintaining molar width.



Removable Fan Screw

Designed to develop the bicuspid area of the arch while maintaining molar width.



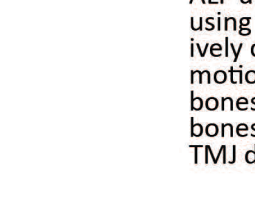
Removable Fan Screw

Designed to develop the bicuspid area of the arch while maintaining molar width.



Removable Fan Screw

Designed to develop the bicuspid area of the arch while maintaining molar width.



Removable Fan Screw

Designed to develop the bicuspid area of the arch while maintaining molar width.



Removable Fan Screw

Designed to develop the bicuspid area of the arch while maintaining molar width.

RECENT UPDATES

- ♦ **Diamond 3-D Matrix Coming Soon!**
A reliable and easy way to quality control your orthotics.
- ♦ **Order Diamond Bite Sticks Today!**
A repeatable and accurate approach to finding your patients bite.

HELPFUL LINKS

- Ⓜ Home Page
- Ⓜ About Our Team
- Ⓜ Contact Diamond
- Ⓜ Privacy Policy

OFFICE HOURS

Monday:	8am - 4pm PST
Tuesday:	8am - 4pm PST
Wednesday:	8am - 4pm PST
Thursday:	8am - 4pm PST
Friday:	8am - 4pm PST

CONTACT

Address:
7859 El Cajon Blvd. Suite A.
La Mesa, CA 91942

Phone Number:
619.724.6400

E-mail:
info@diamondorthoticlab.com



TMJ & Sleep Therapy Centre
INTERNATIONAL

INVITES YOU

COMPLIMENTARY WEBINAR

Learn about the
New Digital Rx Lab Slips

Featuring

Matt Rago | Director of Operations
At Diamond Orthotic Laboratory International



Diamond Orthotic Lab - Digital Lab Rx
Nov 11, 2020
5:30 PM - 6:30 PM PST

REGISTER TODAY

After registering, you will receive a confirmation email containing
information about joining the webinar.

Follow Us

TMJ & Sleep Therapy Centre International

www.TMJTherapyCentre.com

