

CERTIFICATE OF ANALYSIS

Field #1

Flower CBG Flower / MBG1

Sample date: 9/16/2021

Received date: 9/21/2021

Lab Number: PAC7042v1

Report generated on 9/22/2021 4:54:57 PM

Report prepared for

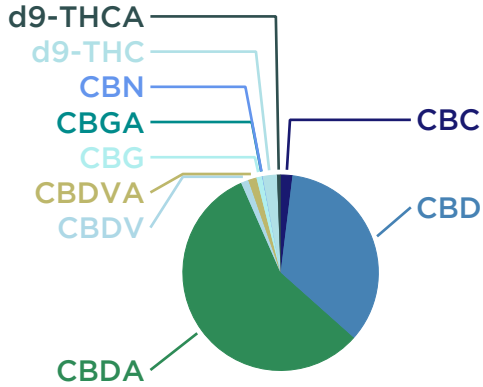
Hummell Farms

49W440 Scott Road

Big Rock, IL

Grower License # 1200-720

Processor License #



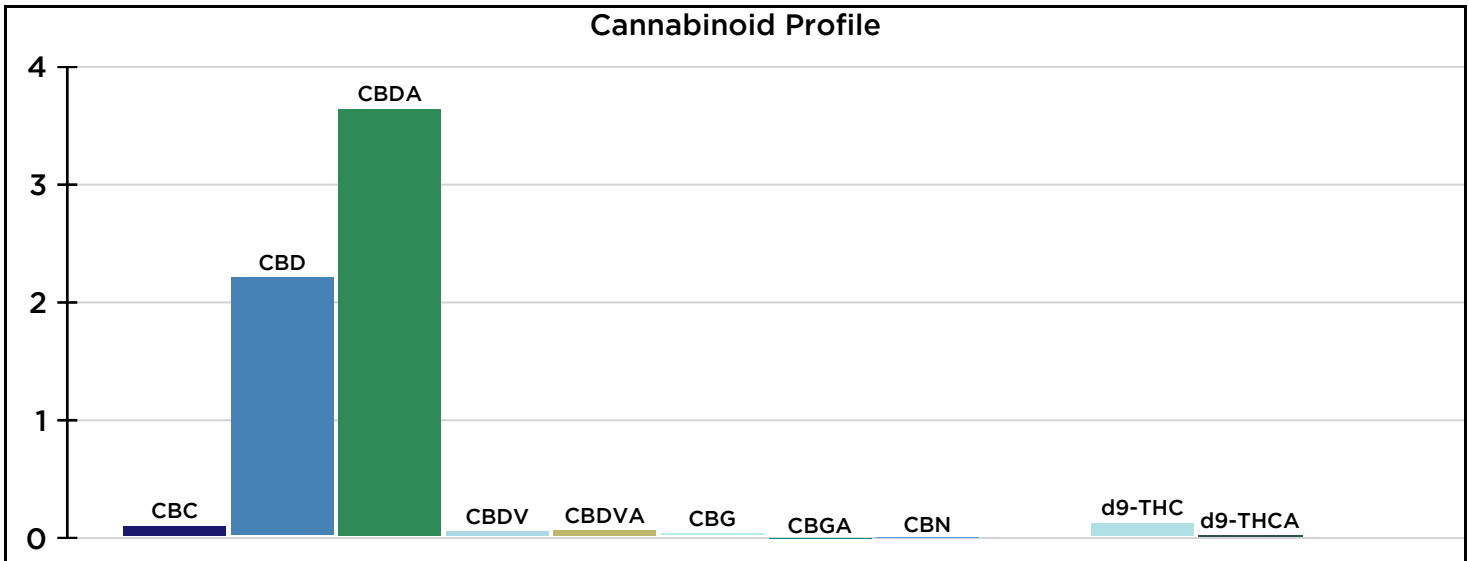
Cannabinoid	Result % DM Basis	Percent of total	LOD ¹	LOQ ²
CBC	0.125	2.0	.0150	.0501
CBD	2.234	35.1	.0125	.0418
CBG	0.062	1.0	.0068	.0227
CBN	0.004	0.1	.0084	.0278
CBDA	3.666	57.5	.0043	.0143
CBGA	0.000	0.0	.0045	.0151
CBDV	0.080	1.3	.0061	.0203
CBDVA	0.089	1.4	.0041	.0136
d9-THC	0.152	2.4	.0154	.0514
d9-THCA	0.038	0.6	.0066	.0219
d8-THC			.0299	.0995
THCV			.0203	.0676
Total	6.370			

Total THC
0.1854%

Total CBD
5.45%

CBD:THC Ratio
29.4

Total CBG
0.06%



Analyzed by HPLC-PDA (Modified AOAC 2018.11)



PO Box 169
Watertown, WI 53094
License: 478792-HP

Dustin Sawyer, Director

Total THC=d9-THC+(0.877*d9-THCA)
Total CBD=CBD+(0.877*CBDA)
Total CBG=CBG+(0.878*CBGA)

Not valid for Wisconsin DATCP
Certificate of Commerce

¹LOD Limit of detection
²LOQ Limit of quantitation