

TeacherLock™

PROTECTING STUDENTS ONE DOOR AT A TIME.

COST EFFECTIVE

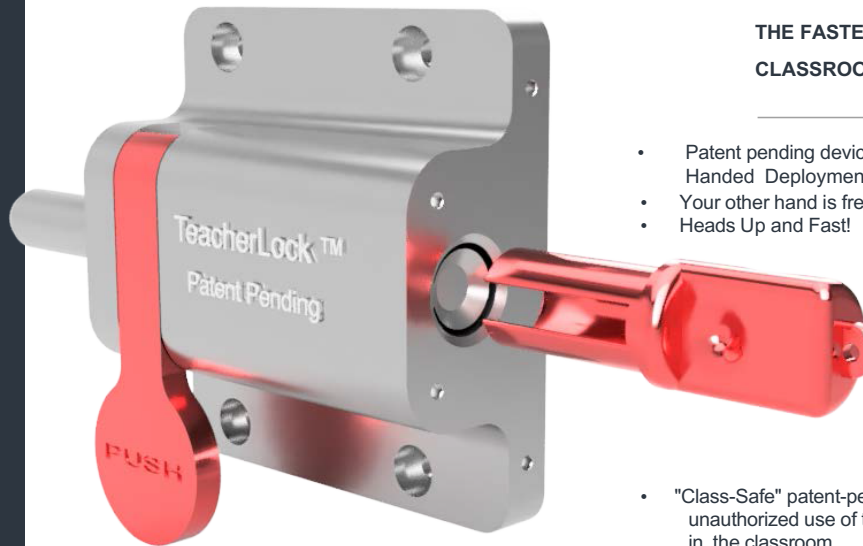
School budgets are tight. TeacherLock is a fraction of the cost of a new door lockset and is easy to install.

CODE COMPLIANT*

Our door barricade can be opened from the outside with a special key for emergency personnel. Our door barricade is quickly deployed in an emergency with a single motion. Egress is easy with a crash bar lever and the device is ADA compliant.

EASY TO INSTALL AND USE

We provide simple instructions and TeacherLock is easy to install with simple tools and a cordless drill. One motion deploys the bolt and locks the door. Our ambidextrous design works for right/left hand door swings, inward or outward swinging doors.



THE FASTEST, MOST EFFECTIVE
CLASSROOM LOCKDOWN DEVICE. PERIOD.

- Patent pending device and lock activator with one-Handed Deployment
- Your other hand is free for a cell phone, pulling a shade, etc.
- Heads Up and Fast!
- Our bio-mechanically engineered lockdown activator deploys easily under stress using "muscle memory." Without question the easiest door lock for schools.
- "Class-Safe" patent-pending technology prevents unauthorized use of the lock, preventing unsafe situations in the classroom.

Our talented engineers partnered with a very passionate Elementary School Principal who recognized that it was critical to develop a way to instantly and effortlessly barricade a door to protect students. Our engineers studied the bio-mechanics of operating a door and lock under extreme stress. We consulted with law enforcement and safety trainers and after extensive testing and trials, we released TeacherLock, a patent-pending device which relies only upon "muscle memory" and gross motor skills to operate. The "Class Safe" activator feels natural in the hand and can easily "home" itself into the door lock for a speedy engagement - even under extreme stress. There have been many inferior (and sometimes dangerous) door barricade devices which flooded the market as a "knee-jerk" response to active shooter incidents, but nearly all other products are too complex, heavy, or too slow to deploy. In addition, administrators need to consider building codes, life safety guidelines and the Americans with Disabilities Act (ADA).

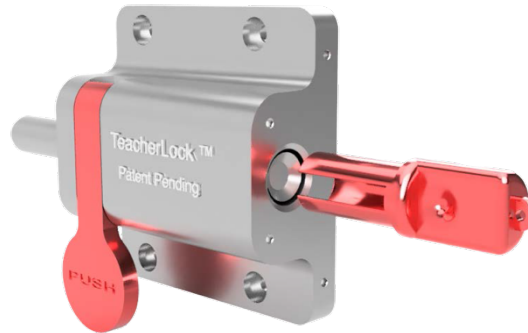
To be safe, compliant, and effective, the door lock must:

1. Be fast and easy to use
2. Comply with the Life Safety guidelines
3. Comply with the Americans with Disabilities Act - can be mounted at accessible height from the floor, and its egress is intuitive without twisting, pinching or grasping.
4. Provide an intuitive and fast single motion to secure the door under stress (when seconds count and fine motor skills are erased by adrenaline).
5. Allow the teacher to keep her eyes on the action, without kneeling to install floor-mounted devices.
6. Provide a stronger bolting mechanism which is mounted higher than the floor, yet out of reach from broken glass window.
7. Allow a single operation to unlatch/unlock the door.
8. Be capable of being opened from the outside for emergency access.
9. Be easy to install on **in-swing and out-swing doors** with a power drill and simple tools.

*Subject to Authority Having Jurisdiction

TeacherLock™
PROTECTING STUDENTS ONE DOOR AT A TIME.

Designed by Engineers to be Fast and Reliable under Extreme Stress



"I was concerned by the number of products which flooded the market after the recent and tragic news of active shooter situations. I quickly realized that many barricade-style door locks, and door bars are unsafe and give a false sense of security, especially when they are so complex to use and don't follow building and safety regulations."

- Amy Emma, Elementary School Principal, Inventor of TeacherLock

COMPLIANCE WITH FIRE SAFETY GUIDELINES and ADA

TeacherLock was designed from the ground up to meet building and life safety codes. TeacherLock is the only retrofit door lock which:

- Opens from the outside in an emergency with a special key.
- Control of the door is maintained by the teacher only. "BullyProof"
- Is easy and intuitive to lock in a single motion – even under extreme stress
- Does not require pinching, grasping or twisting (ADA) Can be mounted 34-48 inches from the floor.
- Mounts easily and uses industry standard through-bolts.
- Does not add motion or operations to opening a door.

Materials and Specifications

- ✓ BODY, PLATE, and Strike: 6061 Aircraft Quality Aluminum
- ✓ BOLT: Stainless Steel
- ✓ TORSION and COMPRESSION SPRINGS: Long life, high strength music wire.
- ✓ LEVER and ACTIVATOR: 6061 Aircraft Aluminum, anodized
- ✓ OUTSIDE DOOR KEY: Stainless Steel
- ✓ MOUNTING HARDWARE: Architectural grade
- ✓ LIFETIME WARRANTY against manufacturer's defects

Defcon Products, LLC
808 Main Street
Fitchburg, MA 01420
www.teacherlock.com
info@teacherlock.com

TeacherLock™
PROTECTING STUDENTS ONE DOOR AT A TIME.

MADE IN THE USA

Proudly manufactured and assembled in the USA by skilled engineers and technicians who are dedicated to student safety.

ENDORSED BY PROFESSIONALS

Law Enforcement, Building Inspectors, Firefighters and Safety Experts agree that schools should be thoughtful and deliberate about how the doors are secured in a lock down. It is important to keep students as safe as possible all year long, not just when a crisis occurs.

FAST, SAFE, SECURE

Law enforcement officers and emergency personnel train constantly to act under stress. It is impossible for an untrained person to overcome the loss of fine motor skills and clear thought necessary to find keys, deploy a complex lock, and to call emergency personnel while protecting the students in a classroom. This is why TeacherLock is different.

For more information on any of our products or services please visit us on the Web at:

www.teacherlock.com