

UNITCELL

Machinery Company

UNITCELL

UNITCELL Co., Ltd., 18, Biseul-ro 432-gil, Okpo-eup, Dalseong-gun, Daegu, Republic of Korea



UNITCELL

1 - About UNITCELL

2 - What We do?

3 - CEO Message



1-About UNITCELL

- 1 - Our Business
- 2 - Corporate History
- 3 - Company Overview
- 4 - Our Strategic Partners

1-1 Our Business

01 Installation & Commissioning 

02 Heavy Equipment Handling 

03 Utility Works 

04 Machinery Dismantling 

05 Logistics 

06 Industrial Machinery Consulting 

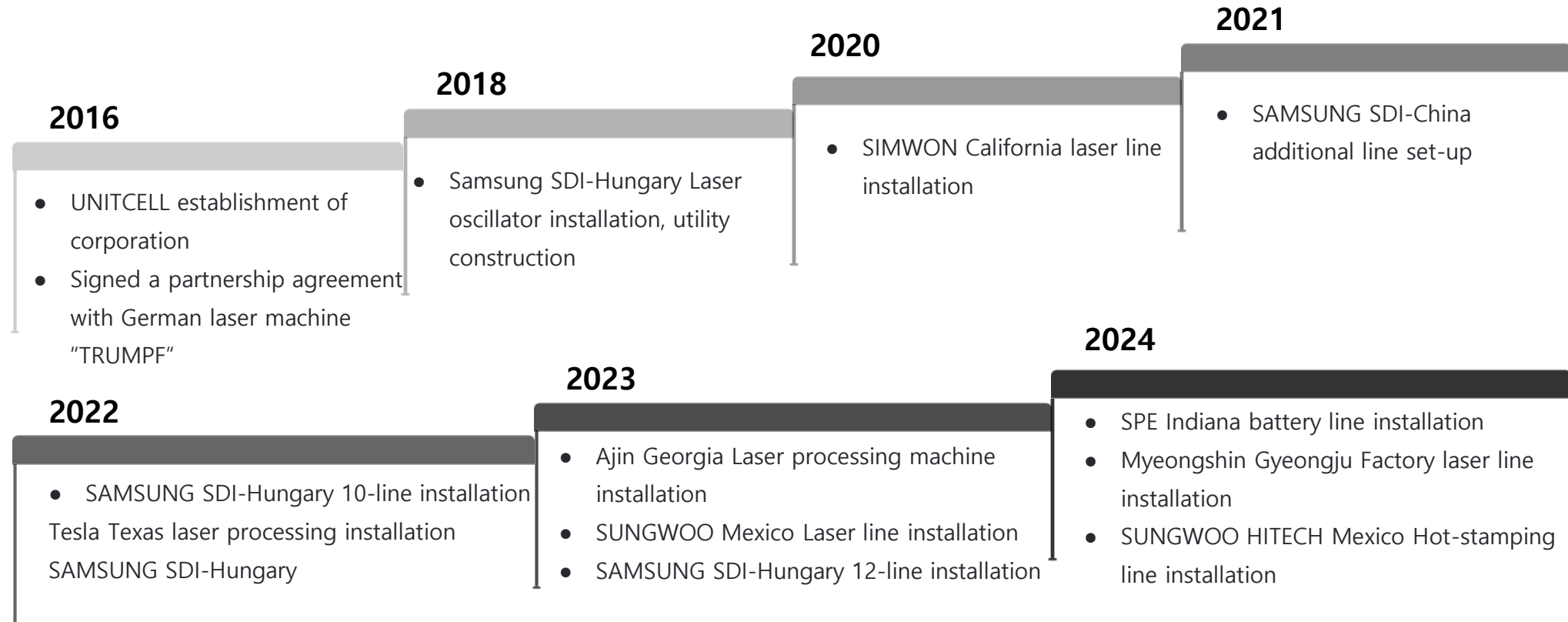
07 Machine Maintenance & Repair 

08 Fabrication 

09 Production Support 



1-2 Corporate History



1-3 Overview



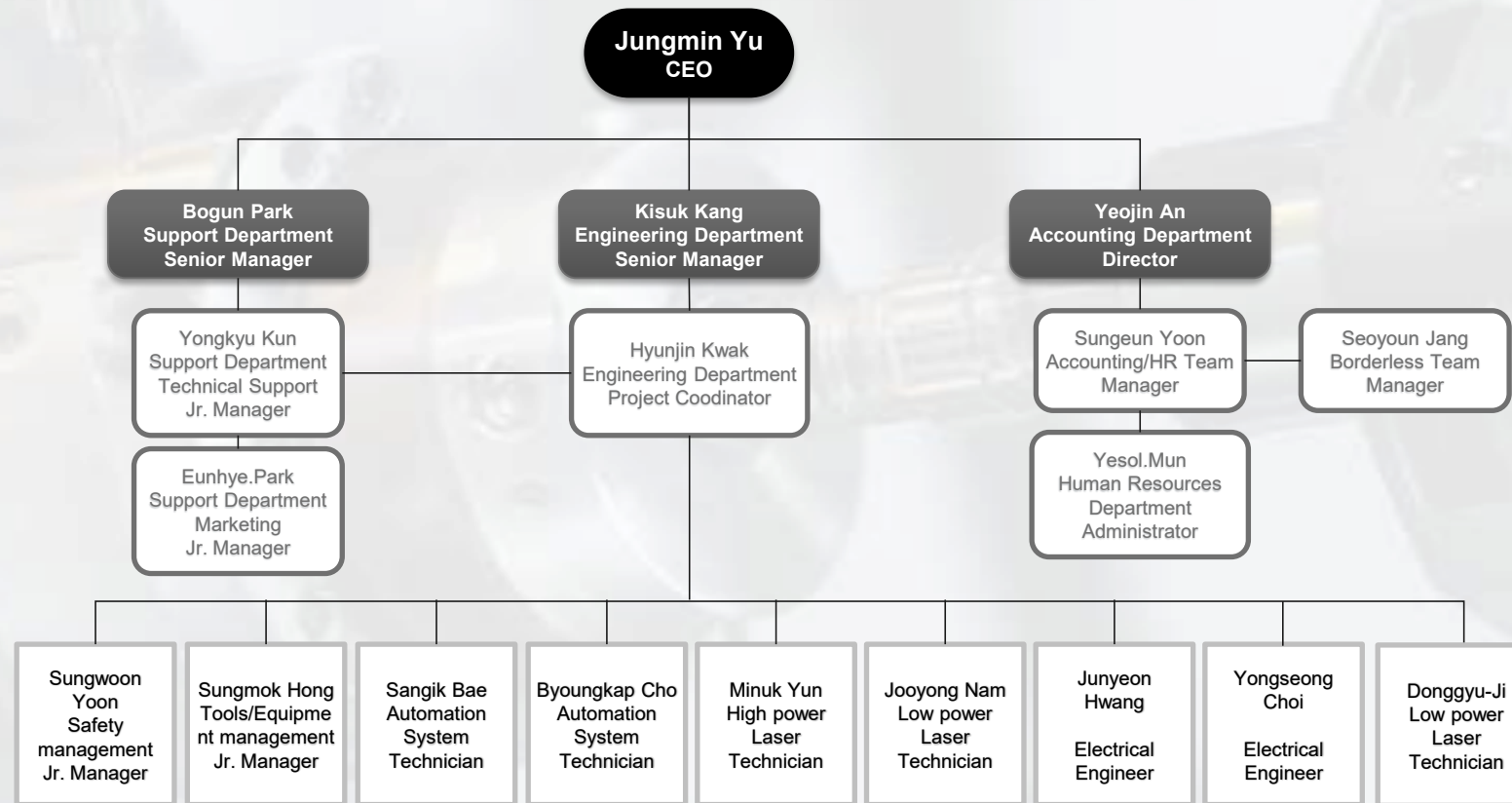
Global Presence – UNITCELL



지역	역할 및 커버리지
Republic of Korea	Technical operations HQ, Workforce development, Project execution in Korea / Asia
U.S.A	Project support and execution, including independent projects, across the U.S. and Mexico
Hungary	Project support and execution, including dedicated projects, in Hungary, the Czech Republic, and other European countries

1-3.1 Overview

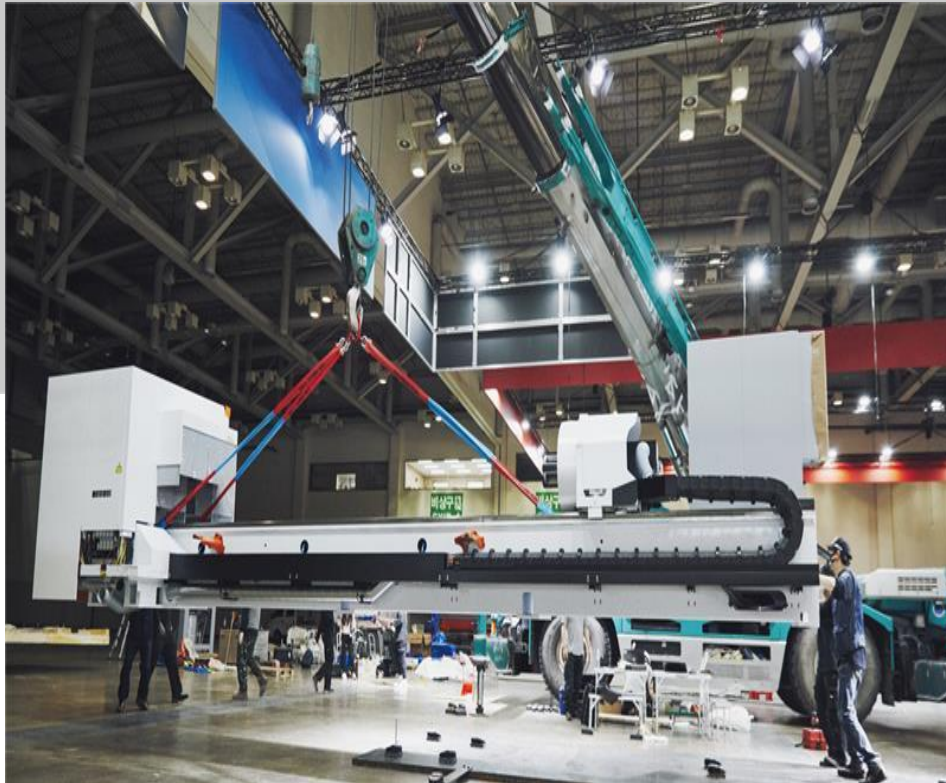
UNITCELL Organization Chart



1-4 Our Strategic Partners

Since its founding, UNITCELL has built trusted partnerships based on proven technical capabilities and execution excellence. With responsibility and reliability at its core, UNITCELL continues to grow together with the key partners listed below.





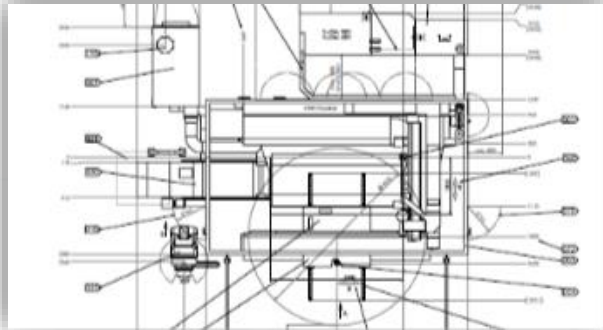
2-What We Do?

- 1 - Integrated Installation & Logistics Services
- 2 - Industrial Machinery Consulting & Equipment Maintenance
- 3 - Custom Fabrication & Production Support

2-1 Integrated Installation & Logistics Services



Based on extensive experience in equipment installation, UNITCELL provides full turn-key solutions covering installation / utility works dismantling and international transportation.



01. Installation & Commissioning

- Drawing and layout design for equipment installation
- Skilled installation technicians on standby at all times
- Security solutions for monitoring production facilities



02. Heavy Equipment Handling

- Container unloading operations
- Machine positioning and leveling
- Preparation of cranes, forklifts, and specialized heavy equipment for machine installation tasks



03. Utility Works

- Factory electrical and air supply installation
- High-pressure air generation using air boosters
- I/O diagnostics and troubleshooting
- PLC programming

2-1 Integrated Installation & Logistics Services



Leveraging extensive experience in equipment installation, UNITCELL provides turn-key solutions covering installation, utility works, dismantling, and international transportation.



04. Machinery Dismantling

- Dismantling for Industrial Machine Relocation / Export
- Cleaning Operations
- Export Packing Services

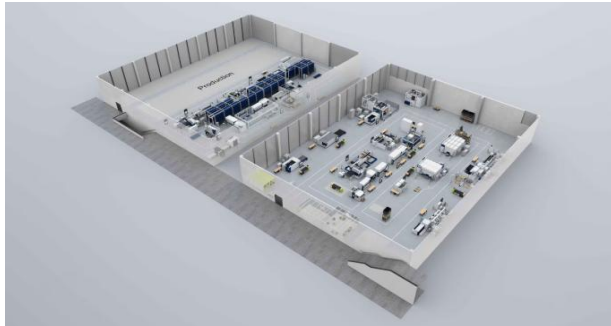


05. Logistics

- Container Unloading Operations
- Machine Positioning & Leveling
- Preparation of Cranes, Forklifts, and Specialized Heavy Equipment for Machine Handling

2-2 Industrial Machinery Consulting & Equipment Maintenance

UNITCELL systematically manages the entire project lifecycle from planning to execution enhancing equipment lifespan and cost efficiency through precise maintenance and tailored solutions.



01. Industrial Machinery Consulting

- Project Planning & Solution Delivery (Ensuring professional project management)
- Project Scheduling (Committed to agreed deadlines)
- Project Management (Dedicated PM assigned to each project)



02. Equipment Maintenance & Repair

- Container unloading operations
- Machine positioning and leveling
- Preparation of cranes, forklifts, and specialized heavy-duty equipment for machine handling



03. Machine_Repair

- Factory electrical and air supply installation
- High-pressure air generation using air boosters
- I/O diagnostics and troubleshooting
- PLC programming

2-3 Custom Fabrication & Production Support

Leveraging extensive on-site experience, UNITCELL designs, fabricates, and installs customized components and equipment tailored to the specific needs of industrial sites.



01. Fabrication_(Part1_Dust Collector Fan)

- Localization of imported components
- Custom design and fabrication of fans with airflow and static pressure tailored to the customer's production environment



02. Fabrication_(Part2_Jig Arm)

- Custom parts fabricated based on production site requirements
- With UNITCELL's engineering expertise, imported parts are localized and precisely mounted using custom-fabricated structures to maximize production efficiency.



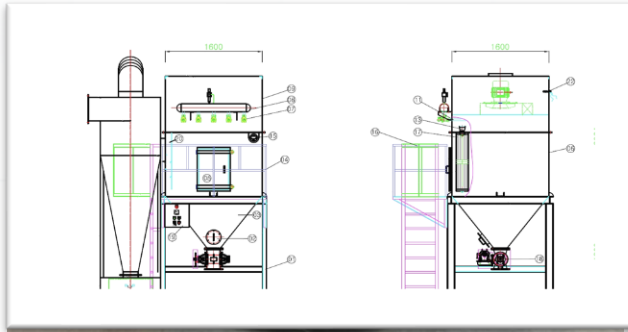
03. Fabrication_(Part3_Scrap Box)

- An industrial container localized and manufactured with UNITCELL's engineering expertise, designed for the efficient collection and storage of scrap and debris.

We also offer localized parts and equipment tailored to industrial site requirements.

2-3 Custom Fabrication & Production Support

UNITCELL leverages its field-proven expertise to design and install customized parts and systems that meet the specific demands of industrial environments.



01. Fabrication_(System1_Dust Collector)

-UNITCELL provides localized, custom-designed systems optimized for airflow and site conditions, with key components like fans, ducts, and filter housings fabricated in-house.



02. Fabrication_(System2_Cleanroom)

-Protective systems designed to shield sensitive equipment from external contamination, temperature/humidity fluctuations, and static electricity
-Customizable installation based on on-site conditions



03. Fabrication (System3 – Air Booster)

-Provides stable air supply for equipment or processes requiring high pressure, with customizable installation options tailored to site conditions.

We also offer localized parts and equipment tailored to industrial site requirements.

2-3 맞춤 제작 서비스 및 생산 지원

UNITCELL은 생산지원 통해 생산 안정성 및 효율성 증대 솔루션을 제공합니다.



01. Production Support _(Monitoring)

- Support for equipment monitoring to ensure stable production
- Real-time data collection through sensor devices
- Early anomaly detection and predictive maintenance solutions



02. Production Support_(Solutions & Reporting)

- Preventive monitoring of equipment conditions
- Data-driven reports including anomalies, maintenance history, and system alerts

4. UNITCELL 차별화 서비스

Integrated Turn-Key Service

-Heavy equipment handling → Installation → Test operation → In-house maintenance support

Overseas Field Capability in the U.S. (North America) / Mexico

-Deployment of English-speaking personnel and real-time response system
-Capable of drafting documents in English
-Dozens of overseas project experiences

Precision Equipment Expertise

-Installation and maintenance of laser processing machines
-Transportation, installation, and utility work for precision equipment

Cleaning & Conveyor Belt Replacement Service

-Dust collector filter / Machine cleaning / Conveyor belt replacement service to extend equipment lifespan

Precision Power & Voltage Diagnostics

-Equipped with power analyzer / Root cause analysis of power issues / Solution offering

Smart Factory Plant Solutions

-Design and installation of security systems, safety fences, automation equipment, and robots for smart factory environments

CEO Message



Hello. This is Jungmin Yu, CEO of UNITCELL.

UNITCELL is a company specializing in laser-machines and machine installation.

We are with customers from start to finish of machine installation work,

Including laser-machine installation, factory equipment installation, laser-machine sales, and service.

“UNITCELL” means minimum unit space in engineering language.

This minimal unit of cells can have a significant impact on the properties of the material as multiple cells are connected in a lattice shape.

We started with the confidence that if we concentrated our individual talents in one place, there was nothing we could not do.

Based on this confidence, we strive to become a company that does not forget its earnest attitude from the beginning.

Jungmin Yu, CEO of UNITCELL



Contact us



Head Office

UNITCELL Co., Ltd.,

🏠 18, Biseul-ro 423-gil, Okpo-eup
Dalseong-gun, Daegu, Republic of Korea

☎ +82-2-563-5545

✉ info@unitcell.com



UNITCELL USA INC

🏠 1588 E Boulevard Suite D,
KOKOMO, INDIANA, United States of America

☎ +1-765 614 5755

✉ borderless@unitcell.com



UNITCELL EUROPE Kft.

🏠 1027 Budapest, Bem József utca, 9th Floor,
Door 10, Hungary

☎ +36-304 14 2652

✉ borderless@unitcell.com