

A Place for Nature

The protection and potential to enhance the ecological environment within the site for the benefit of nature and future residents has been an integral part of the masterplanning process.

Protecting ecology

The protection and potential to enhance the ecological environment within the site has been an integral part of the masterplanning process.

An appraisal has been undertaken to establish an ecological baseline for the site and to determine potential **Important Ecological Features** (IEF) that could be impacted by future development. The site is mostly made up of arable land, and modified grassland, so there are real opportunities to create new habitats and protect and enhance hedgerows and trees on site.

The illustrative masterplan fully considers the presence of species identified on site, such as the hazel dormouse, slow worms, and a range of bat species. The emerging proposals seek to enhance on-site biodiversity, by creating a diverse green web of hedgerows, meadows, ponds, and trees.



Creative ways to encourage habitats at all levels within development.



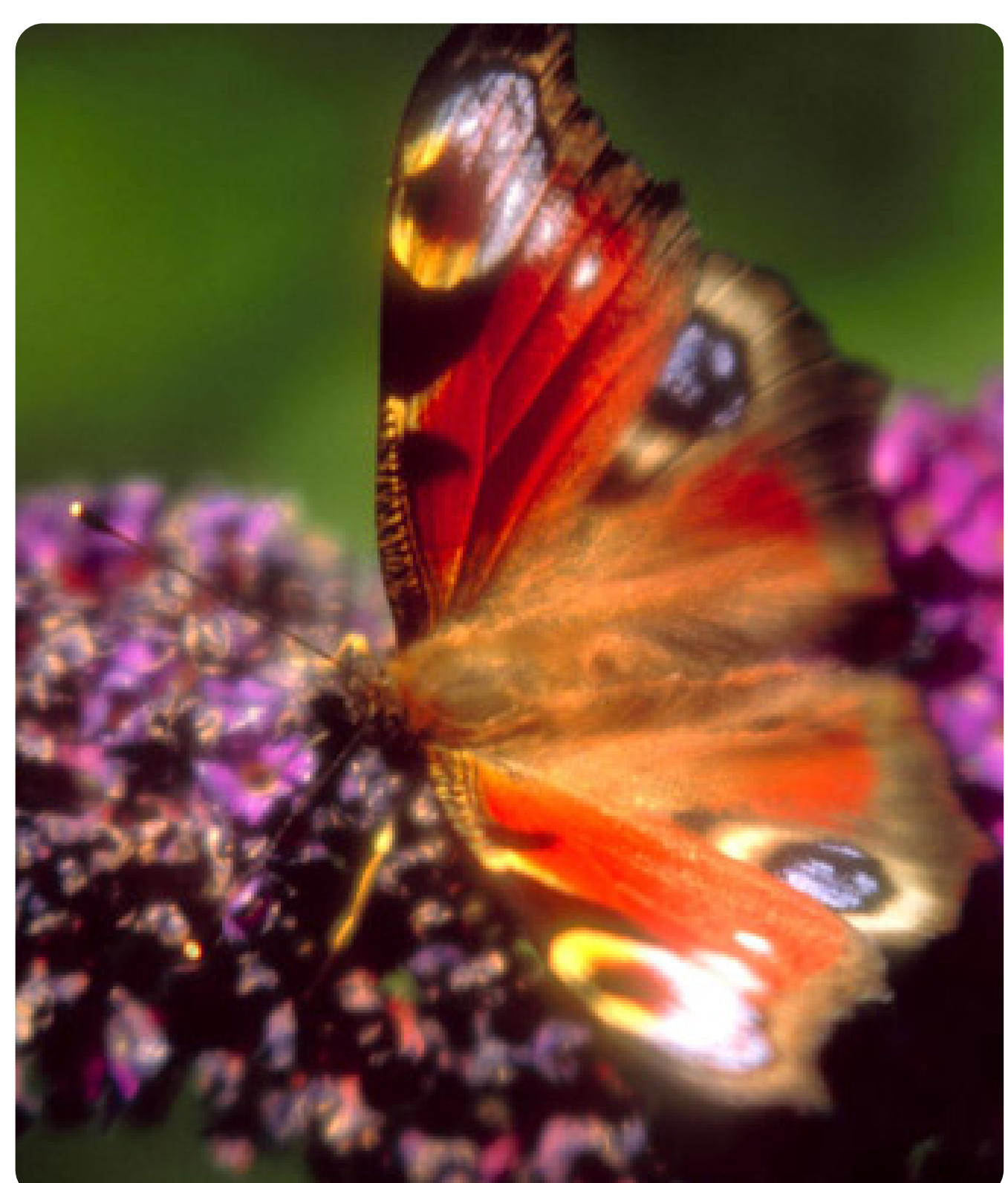
Sustainable drainage features can also be used to enhance biodiversity.



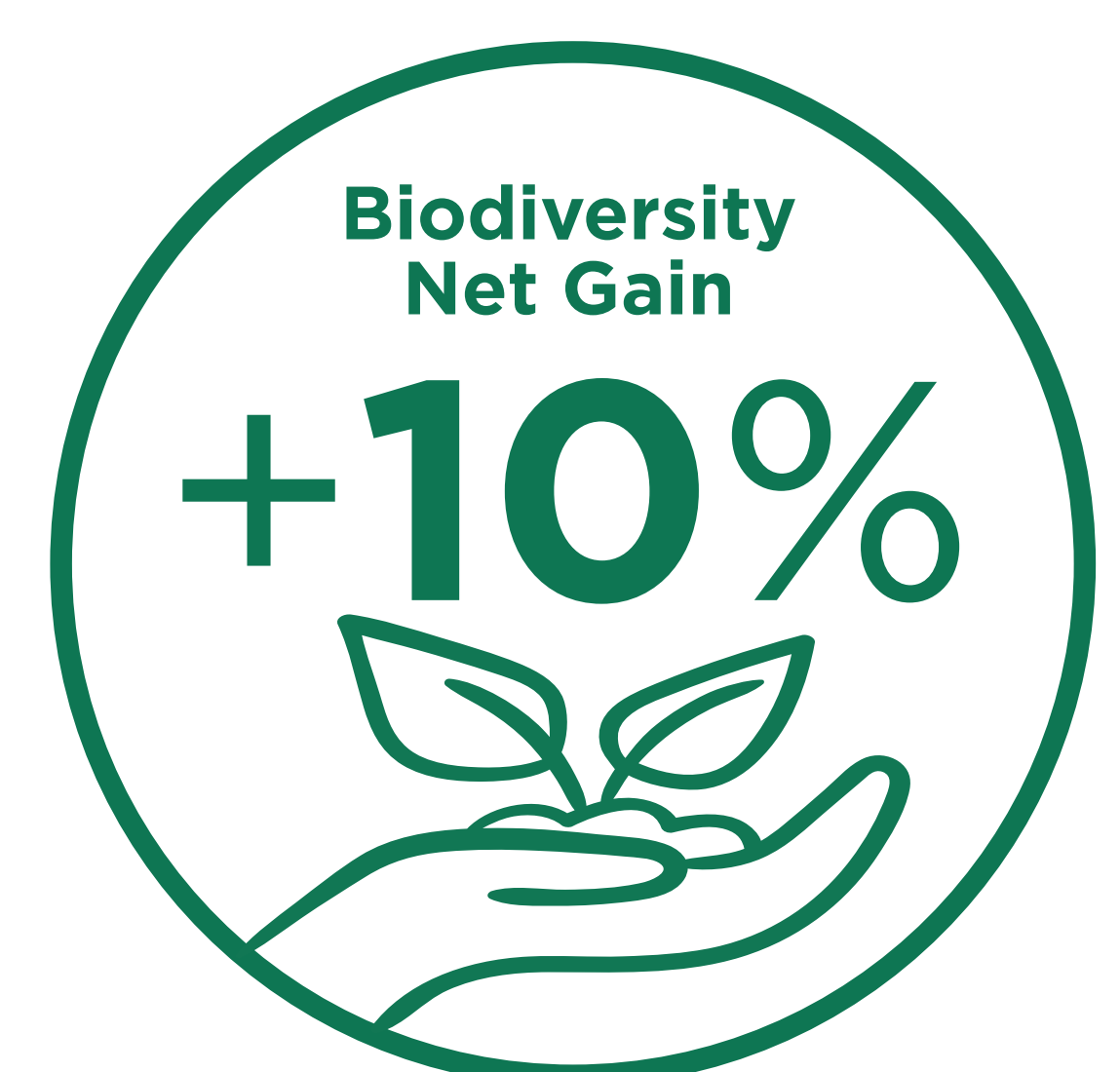
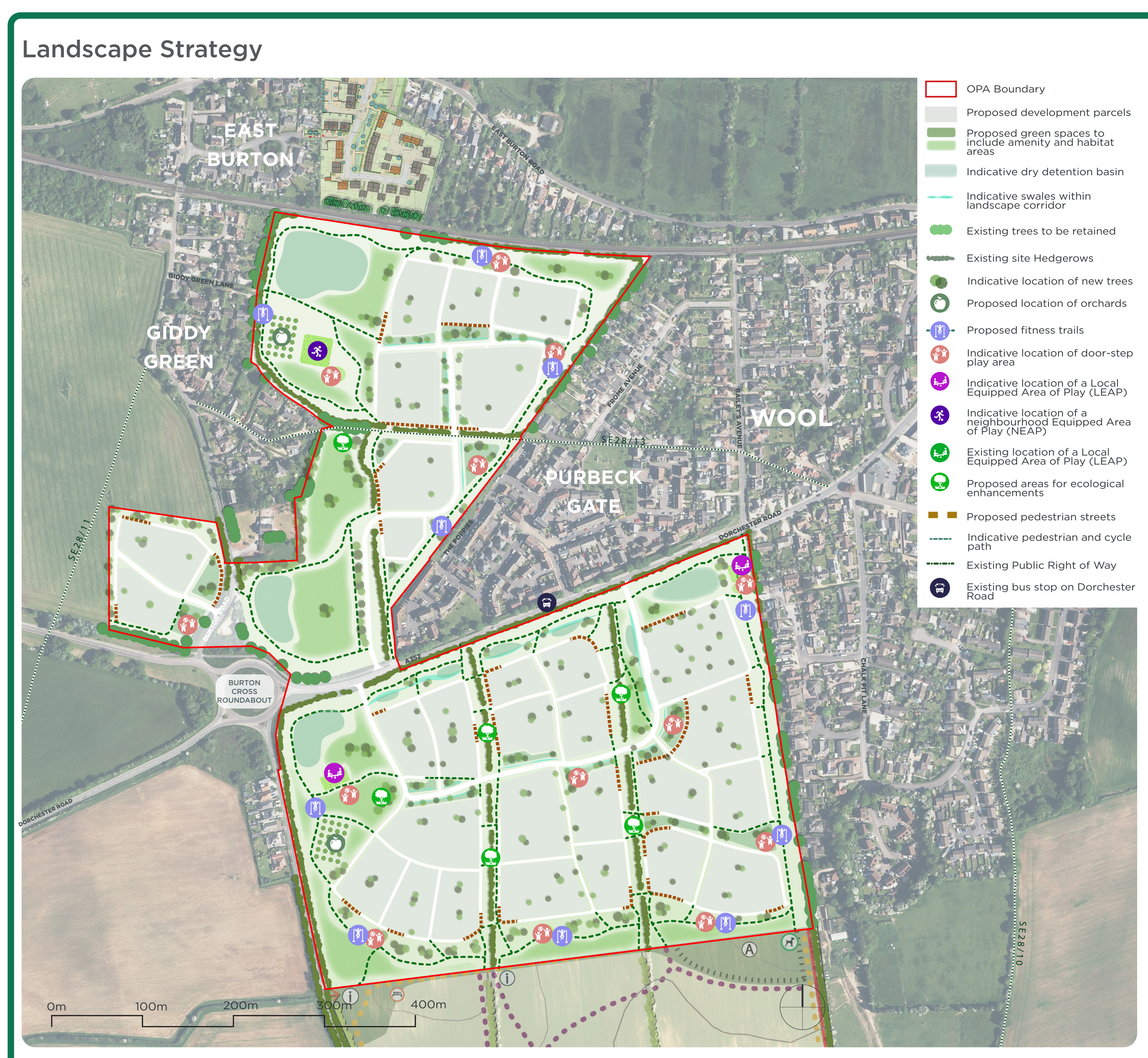
New grassland meadows add to biodiversity on site.



Enhancing existing on-site hedgerows and trees will be a key part of our landscape and biodiversity strategy



Creating opportunities for nature to thrive



Environment is a vital attribute of the Burton Vale masterplan. What do you think?