



76. LOUISVILLE HISTORIC DISTRICT
STARK CO., OH

09, OH...StarkCounty_LouisvilleID_007

07, 05/14/11



77. LOUISVILLE HISTORIC DISTRICT
STARK CO., OH

05/09, OH-StarkCounty-LouisvilleID-007
07, 05/14/11



78. LOUISVILLE HISTORIC DISTRICT
STARK CO., OH

OH_StarkCounty_LouisvilleHD_007
05/14/11



79. LOUISVILLE HISTORIC DISTRICT
STARK CO., OH

OH_StarkCounty_Louisville0_007

85/14/11



80. LOUISVILLE HISTORIC DISTRICT
STARK CO., OH

59009, OH_StarkCounty_LouisvillePD_009

05/14/11



81. LOUISVILLE HISTORIC DISTRICT
STARK CO., OH

OH_StarkCounty_LouisvilleHD_808

C7, 05/14/11



82. LOUISVILLE HISTORIC DISTRICT
STARK CO., OH

OH-StarkCounty-LouisvilleHD_008

C7, 05/14/11



83. LOUISVILLE HISTORIC DISTRICT
STARK CO., OH

OH_StarkCounty_LouisvilleHD_008

05/14/11



84. LOUISVILLE HISTORIC DISTRICT
STARK CO., OH

05/14/11, 05/14/11, OH_StarkCounty_LouisvilleHD_008

05/14/11



85. LOUISVILLE HISTORIC DISTRICT
STARK CO., OH

000009, OH_StarkCounty_LouisvilleHQ_003

0007, 05/14/11



86. LOUISVILLE HISTORIC DISTRICT
STARK Co., OH

000009, OH_StarkCounts_LouisvilleHD_008

CC7, 05/14/11



87. LOUISVILLE HISTORIC DISTRICT
STARK Co., OH

0000009, OH_StarkCounty_LouisvilleHD_008

0.17, 05/14/11



88. LOUISVILLE HISTORIC DISTRICT
STARK Co., OH

OH_StarkCounty_LouisvilleHD_2008

C7, 05/14/11



89. LOUISVILLE HISTORIC DISTRICT
STARK CO., OH

OH_StarkCounty-LouisvilleHD_008

05/14/11



90. LOUISVILLE HISTORIC DISTRICT
STARK CO., OH

OH, Stark County, Louisville | eHD_009

05/14/11



91. LOUISVILLE HISTORIC DISTRICT
STARK CO., OH

© 2009, OH_StarkCounty_LouisvilleHD_009
© 2007, 05/14/11



92. LOUISVILLE HISTORIC DISTRICT
STARK Co., OH

000009, OH_StarkCountyLouisvilleHD_009

07. 05/14/11

Fujicolor Crystal Archive
FUJIFILM
FUJICOLOR Crystal Archive
FUJIFILM



93. LOUISVILLE HISTORIC DISTRICT
STARK CO., OH

OH StarkCounty.LouisvilleHD_009
C7, 05/14/11



94. LOUISVILLE HISTORIC DISTRICT
STARK CO., OH

0109, OH_StarkCounty_LouisvilleID_009

07, 05/14/11



95. LOUISVILLE HISTORIC DISTRICT
STARK CO., OH

03/08/09, OH_StarkCounty_LouisvilleHD_009

03/07, 05/14/11



96. LOUISVILLE HISTORIC DISTRICT
STARKE CO., OH

9039, OH_StarkeCounty_LouisvilleHD_039
67, 05/14/11



97. LOUISVILLE HISTORIC DISTRICT
STARK CO., OH

OH_StarkCounty_LouisvilleID_009

05/14/11



98. LOUISVILLE HISTORIC DISTRICT
STARK CO., OH

OH_StarkCounty_LouisvilleID_009
C7, 05/14/11



99. LOUISVILLE HISTORIC DISTRICT
STARK CO., OH

0199889, OH_StarkCounty_LouisvilleHD_889

C7, 05/14/11



100. LOUISVILLE HISTORIC DISTRICT
STARK CO., OH

059809, OH_StarkCounty_LouisvilleHD_018

C7. 05/14/11



101. LOUISVILLE HISTORIC DISTRICT
STARK CO., OH

OH Stark County Louisville OH 810

C7, 05/16/11



102. LOUISVILLE HISTORIC DISTRICT
STARK CO., OH

OH Stark County Louisville OH 43089
C7, 05/14/11

Fujicolor Crystal Archive
FUJIFILM



103. LOUISVILLE HISTORIC DISTRICT
STARK Co., OH

OH_StarkCounty_LouisvilleHD-018

05/14/11



104. LOUISVILLE HISTORIC DISTRICT
STARK CO., OH

0309, OH_StarkCounty_LouisvilleHD_010

0307, 05/14/11



105. LOUISVILLE HISTORIC DISTRICT
STARK CO., OH

09-3009, OH_StarkCounty_LouisvilleID_010

C7, 05/14/11



106. LOUISVILLE HISTORIC DISTRICT
STARK Co., OH

9009, DH\StarkCounty_LouisvilleHD_010

C7, 05/14/11

Fujicolor Crystal Archive

FUJIFILM



107. LOUISVILLE HISTORIC DISTRICT
STARK CO., OH

OH, Stark County, Louisville, OH, 010

07, 05/14/11



108. LOUISVILLE HISTORIC DISTRICT
STARK CO., OH

OH Stark County, Louisville HD_010
C7, 05/14/11

Fujicolor Crystal
FUJIFILM
Archive



109. LOUISVILLE HISTORIC DISTRICT
STARK CO., OH

0659089, OH_StarkCounty_LouisvilleHD_010

03/07/05/14x11

Fujicolor Crystal Archive
FUJIFILM
FUJICOLOR



110. LOUISVILLE HISTORIC DISTRICT
STARK Co., OH

OH_StarkCounty_LouisvilleFD_011
C7, 05/14/11

Fujicolor Crystal
FUJIFILM
Crystal Archive
FUJIFILM
Archive
FUJIFILM



01030009, OH_StarkCounty_LouisvilleD_011
07, 05/14/11

III. LOUISVILLE HISTORIC DISTRICT
STARK CO., OH



OH_StarkCounty_LouisvilleID_011
C7, 05/14/11
112. LOUISVILLE HISTORIC DISTRICT
STARK CO., OH



113. LOUISVILLE HISTORIC DISTRICT
STARK CO., OH

00000009. OH_StarkCounty_LouisvilleHD_011
C7. 05/14/11



114. LOUISVILLE HISTORIC DISTRICT
STARK CO., OH

00000009, 01-StarkCounty_LouisvilleD_011

0007, 05/14/11



115. LOUISVILLE HISTORIC DISTRICT
STARK CO., OH

039, OH_StarkCounty_LouisvilleID_011
C7, 05/14/11

Fujicolor Crystal
FUJIFILM
Archive



116. LOUISVILLE HISTORIC DISTRICT
STARK CO., OH

05/14/11

OH_StarkCounty_LouisvilleHD_811

Fujicolor Crystal Archive



117. LOUISVILLE HISTORIC DISTRICT
STARK CO., OH

OH-StarkCounts-LouisvilleID-011

C7, 05/14/11



118. LOUISVILLE HISTORIC DISTRICT
STARK CO., OH

0009_01LStarkCounty_LouisvilleHD_011

C7, 05/14/11



OH-StarkCounty-LouisvilleD-011
05/14/11
119. LOUISVILLE HISTORIC DISTRICT
STARK CO., OH



0059009. OH_StarkCounty_LouisvilleHD_012

<> C7. 05/14/11

120. LOUISVILLE HISTORIC
DISTRICT, STARK CO., OH



OH-StarkCounty-LouisvilleID_012
C7, 05/14/11

121. LOUISVILLE HISTORIC DISTRICT
STARK CO., OH



122. LOUISVILLE HISTORIC DISTRICT
STARK CO., OH

0109, OH_StarkCounty-LouisvilleHD_012
<>, C7, 05/14/11







0059009. OH_StarkCounty_LouisvilleHD_012

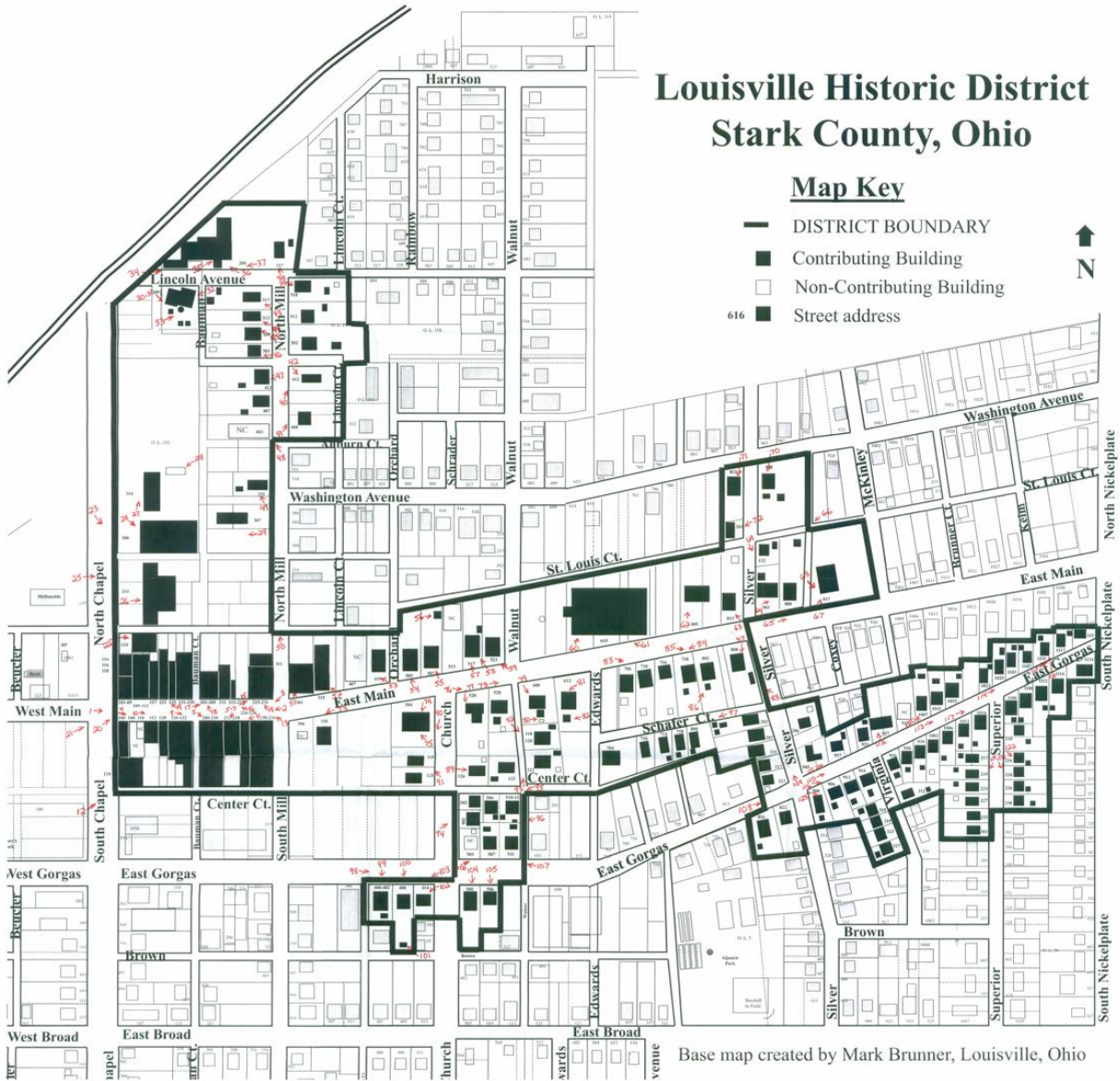
07.05/14/11

123. LOUISVILLE HISTORIC
DISTRICT, STARK CO., OH

Louisville Historic District Stark County, Ohio

Map Key

-  DISTRICT BOUNDARY
-  Contributing Building
-  Non-Contributing Building
-  Street address

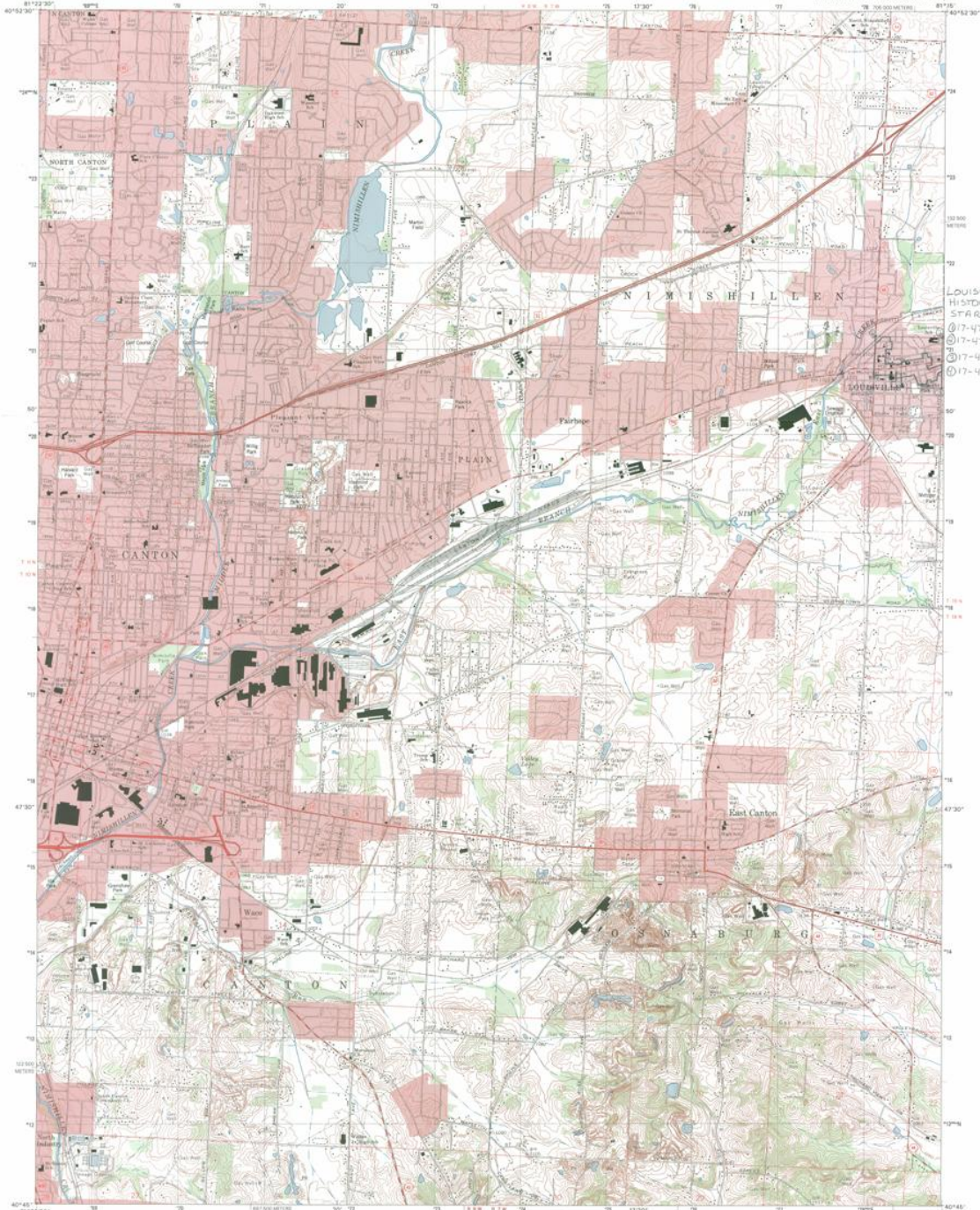


Base map created by Mark Brunner, Louisville, Ohio



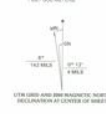
U.S. DEPARTMENT OF THE INTERIOR
U.S. GEOLOGICAL SURVEY

CANTON EAST QUADRANGLE
OHIO-STARK CO.
7.5-MINUTE SERIES (TOPOGRAPHIC)



LOUISVILLE DISTRICT
STARK CO., OH
① 17-478117-4520131
② 17-478100-4520115
③ 17-478095-4520130
④ 17-478015-4520130

Produced by the United States Geological Survey
Topographic information 1993. Projection derived from imagery
under 1984 and other available Public Land Survey System and
North American Datum of 1983 (NAD 83). Projection used
1:250,000 scale, Universal Transverse Mercator, zone 17
North American Datum of 1983 (NAD 83) is shown by dashed
lines. The values of all elevations are in feet
National Geodetic Survey NAD 83 datum
Elevations are within the Contour Lines north of the
Stark County land from based on Ohio State Base
Landmark buildings verified 1987



ROAD CLASSIFICATION
Primary highway
Secondary highway
Tertiary highway
Light duty road, hard or
improved surface
Unimproved road
Interstate Route
U.S. Route
State Route

UTM GRID AND GRID COORDINATE NORTH
MEASURED BY CENTER OF SHEET

CONTOUR INTERVAL 10 FEET
NATIONAL GEODETIC VERTICAL DATUM OF 1983
ELEVATIONS PROVIDED IN METERS, METERS BY 0.1 METER

1	2	3	4	5	6	7	8	9	10
1	2	3	4	5	6	7	8	9	10

THIS MAP COMPLETS WITH NATIONAL MAP ACCURACY STANDARDS
FOR SALE BY U.S. GEOLOGICAL SURVEY, P.O. BOX 246, BEVERLY, COLORADO 80501
A FOLDER DESCRIBING TOPOGRAPHIC MAPS AND SYMBOLS IS AVAILABLE ON REQUEST

CANTON EAST, OH
1994
SERIAL 451 BY 84-SERIES 1992





Office of the City Manager

July 12, 2011

Mr. Burt Logan, State Historic Preservation Officer
Ohio Historical Society
800 E. 17th Avenue
Columbus, Ohio 43211

Dear Mr. Logan,

The City of Louisville is pleased to be considered by the Historic District Advisory Board for the establishment of a new historic district. This nomination culminates more than a year's work to identify the appropriate boundaries and accumulate the historic records to support a district that reflects the historic development of our community and similar communities in northeast Ohio. We are very pleased to offer for your consideration a district that is of significant size and contains very few non-contributing properties.

The City Council, staff and a number of participating residents who made this nomination possible sincerely hope your decision will be to support the Louisville Historic District. We believe the district has merit and tells an important story about the development of our region, both through its architecture and what that architecture says about the lives of the people who lived here during the period.

Thank you for your consideration.

Sincerely,

A handwritten signature in cursive script, appearing to read "E. Thomas Ault".

E. Thomas Ault
City Manager



October 4, 2011

Ms. Carol D. Shull, Keeper of the
National Register
National Park Service
National Register of Historic Places
1201 Eye Street, NW (2280)
Washington DC 20005

Dear Ms. Shull:

Enclosed please find two (2) new National Register nominations for Ohio. All appropriate notification procedures have been followed for the new nomination submission.

NEW NOMINATION

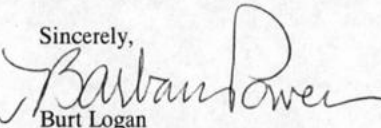
Woodland Cemetery Association of Dayton Historic District
Louisville Historic District

COUNTY

Montgomery
Stark

If you have questions or comments about these documents, please contact the National Register staff in the Ohio Historic Preservation Office at (614) 298-2000.

Sincerely,

for 
Burt Logan
Executive Director and CEO
State Historic Preservation Officer

Enclosures

OHIO HISTORICAL SOCIETY

Ohio Historic Preservation Office

1982 Velma Avenue, Columbus, Ohio 43211-2497 ph: 614.298.2000 fx: 614.298.2037
www.ohiohistory.org