

United States Department of the Interior
National Park Service

**NATIONAL REGISTER OF HISTORIC PLACES
CONTINUATION SHEET**

**Louisville Historic District
Stark County, Ohio**

Section 10
Page 1

Verbal Boundary Description

Beginning at the intersection of E. Main Street and N. Chapel Street, go north along the eastern curb line to the northwest property line of 205 Lincoln Avenue; follow the northwest property line to the rear property line; turn east, go to the eastern property line of 217 Lincoln; turn south to the south curb line of Lincoln Ave; turn east to the rear property line of 518 N. Mill Street; turn south and follow the rear property lines of Mill Street properties to the south property line of 502 N. Mill; turn west along this line to the west curb line of Lincoln Ct.; go south along this line to the north curb line of Auburn Ct.; turn west to the west curb line of N. Mill Street; then head south to the south curb line of St. Louis Ct.; turn east to the west property line of 203 N. Silver Street; turn north and follow this line and the west property line of 812 Washington Avenue to the south curb line of Washington Avenue; turn east to the east property line of 902 Washington Avenue; then go south to the south curb line of St. Louis Court; turn east to the western curb line of McKinley Street; turn south to the northern curbline of E. Main Street; turn west and follow the northern curbline of E. Main Street to the western curbline of N. Silver Street; turn south to the southern curb line of Schafer Ct.; turn east to the east property line of 206 S. Silver Street; go south along this line to the north property line of 917 E. Gorgas Street; turn east and follow the north property lines of E. Gorgas Street properties to the western curb line of S. Nickelplate Avenue; turn south to the south property line of 1124 E. Gorgas; go west to the east property line of 1116 E. Gorgas; go south to the south property line of 1116 E. Gorgas; turn east to the east property line of 1112 E. Gorgas; go south along the east property lines of Gorgas Street to the south property line of 230 Superior; go west to the western curb line of Superior Street; turn south to the south property line of 303 Superior; then go east to the rear property line of 303 Superior; go north to the south property line of 312 Virginia; turn west to the western curb line of Virginia Street; go south to the south property line of 327 Virginia; go west to the west property line of 327 Virginia; turn north to the south property line of 906 E. Gorgas; turn west to the west curb line of S. Silver Street; go south to the rear property line of 822 E. Gorgas; turn west to the west property line of 816 E. Gorgas; turn north to the southern curb line of E. Gorgas; go east to a point opposite the west property line of 223 S. Silver; go north to the south property line of 211 S. Silver; turn west to the west property line of 211 S. Silver; go north to the south property line of 800 E. Gorgas; go west to the western curb line of Walnut Street; go south to the north property line of 317 Brown Street; turn west to the east property line of 500 E. Gorgas; go south to the northern curb line of Brown Street; turn west to the east curb line of Church Street; go north to a point opposite the south property line of 414 E. Gorgas; go west to the east property line of 408 E. Gorgas; go south to the northern curb line of Brown Street; go west to the west property line of 408 E. Gorgas; go north to the south property line of 400-402 E. Gorgas; go west to the east curb line of Lincoln Ct.; go north to the south curb line of E. Gorgas; turn east to the east curb line of Church Street; go north to the north curb line of Center Ct.; go west to the east curb line of S. Chapel; turn north to the point of beginning.

Boundary Justification

The proposed boundaries represent the oldest developed portions of Louisville that relate to the identified areas of significance (architecture, commerce, and settlement). In addition to historic significance, the district has been further defined by its current historic integrity. Although they fall within the area or period of significance, some buildings have been excluded from the proposed district due to loss of integrity, lack of physical continuity, or a distinct change in architectural character.

United States Department of the Interior
National Park Service

**NATIONAL REGISTER OF HISTORIC PLACES
CONTINUATION SHEET**

**Louisville Historic District
Stark County, Ohio**

Section 10
Page 2

For example, a distinct physical change occurs to the west of Chapel Street in Louisville, where West Main Street has been redeveloped on north and south sides with modern shopping center and strip commercial development. Historic development in this area no longer exists.

To the south of the district, the 1842 Gorgas addition to Louisville included a square at the intersection of South Mill and East Gorgas Streets, one block south of Main and one block east of Chapel. While this location was important in the past, no historic buildings or evidence of the square exist today. The square was reduced in size in 1874 as part of local street improvements. In 1876 the village's Public School was located at the northwest corner. The Town Hall was built on the northeast corner in 1875-76. By 1922, the sites had been reversed, with the town hall occupying the old school building and a new public school built on the former site of the original town hall. Unfortunately, both of these historic school buildings have been removed; the Louisville School just recently demolished, in 2009. A new town hall and fire department building is too recent to include in the historic district.

Other areas surrounding the historic district, including residential parts of South Chapel, East Gorgas, West Gorgas, Broad Street, Washington Avenue and East Main Street were not able to be included because of a change in architectural character, lack of integrity or lack of physical continuity within these areas. Small pockets of intact historic housing stock exist in these areas; however they are separated from the district by unacceptably large gaps or intrusive resources that prevent their inclusion. The boundaries are carefully drawn to include the contiguous areas of historic and architectural merit, including extensions where warranted.

11. Form Prepared By

name/title Judith Williams and Nathalie Wright

organization Historic Preservation Consultants date May 16, 2011

street & number 2237 Cambridge Blvd telephone 614-736-3540
city or town Columbus state OH zip code 43221

Additional Documentation

Submit the following items with the completed form:

Continuation Sheets

Maps

- A USGS map (7.5 or 15 minute series) indicating the property's location.
- A sketch map for historic districts and properties having large acreage or numerous resources.

Photographs

Representative black and white photographs of the property.

Additional items (Check with the SHPO or FPO for any additional items)

Property Owner

(Complete this item at the request of the SHPO or FPO.)

name Multiple - Over 50

street & number _____ telephone _____

city or town _____ state ____ zip code _____

Paperwork Reduction Act Statement: This information is being collected for applications to the National Register of Historic Places to nominate properties for listing or determine eligibility for listing, to list properties, and to amend existing listings. Response to this request is required to obtain a benefit in accordance with the National Historic Preservation Act, as amended (16 U.S.C. 470 et seq.). A federal agency may not conduct or sponsor, and a person is not required to respond to a collection of information unless it displays a valid OMB control number.

Estimated Burden Statement: Public reporting burden for this form is estimated to average 18.1 hours per response including the time for reviewing instructions, gathering and maintaining data, and completing and reviewing the form. Direct comments regarding this burden estimate or any aspect of this form to Keeper, National Register of Historic Places, 1849 "C" Street NW, Washington, DC 20240.

United States Department of the Interior
National Park Service

**NATIONAL REGISTER OF HISTORIC PLACES
CONTINUATION SHEET**

**Louisville Historic District
Stark County, Ohio**

Photos
Page 1

The following information is the same for all photographs:

Louisville Historic District
Louisville, Stark County, Ohio
Photos by Judy Williams
Photos taken 2010

1. Commercial block of East Main Street, looking east
2. Commercial block of East Main Street, looking west
3. South side of East Main Street, 100 – 234 East Main Street
4. South side of East Main Street, looking west from 234
5. 230-234 and 212-218 East Main Street
6. Storefront at 234 East Main Street
7. Storefront at 230 East Main Street
8. Schilling Block, 200-210 East Main Street
9. South side East Main Street, looking east from 126-132 East Main
10. South side East Main Street, looking east from 110 East Main
11. 112, 110, 108 and 100 East Main Street
12. East side South Chapel Street, looking north from 134 South Chapel
13. Keim Block, 225-231 East Main Street, looking northwest
14. Keim Block, 225-231 East Main Street, façade
15. Keim Block, 225-231 East Main Street, street view of façade, looking east
16. North side East Main Street, looking west from 225-231 East Main
17. North side East Main Street, looking east from 201-205 East Main
18. Storefront detail at 201-205 East Main Street
19. North side East Main Street, looking west from 131-135 East Main
20. North side East Main Street, looking east from Chapel Street
21. 114-118 North Chapel Street; 101-105 and 109-113 East Main Street, looking northeast
22. 134 North Chapel Street
23. St. Louis Catholic Church complex, east side North Chapel Street, looking southeast
24. St. Louis Catholic Church, 300 North Chapel Street, looking southeast
25. St. Louis School, 214 North Chapel Street, looking southeast
26. St. Louis School, 214 North Chapel Street, façade detail
27. St. Louis Rectory, 314 North Chapel Street, looking northeast at façade
28. Garage to rear of 314 North Chapel Street, looking west
29. Huffer Center, part of St. Louis Church complex, 307 North Mill Street
30. Star Mills, 200 Lincoln Avenue, looking southeast
31. Star Mills, 200 Lincoln Avenue, looking southwest
32. Star Mills, 200 Lincoln Avenue, looking southwest
33. Star Mills, 200 Lincoln Avenue (weigh scale, office and silo), looking east
34. Louisville Machine Company, 205 Lincoln Avenue, looking northeast

United States Department of the Interior
National Park Service

**NATIONAL REGISTER OF HISTORIC PLACES
CONTINUATION SHEET**

**Louisville Historic District
Stark County, Ohio**

Photos
Page 2

35. Louisville Machine Company, 205 Lincoln Avenue, looking northeast
36. Louisville Machine Company, 205 Lincoln Avenue, looking northwest
37. View on Lincoln Avenue, looking west toward City Mills, 200 Lincoln Avenue
38. 217 Lincoln Avenue and garage, looking north
39. 518 and 512 North Mill Street, looking east
40. 502 and 412 North Mill Street, looking northeast
41. 412 and 408 North Mill Street, looking northeast
42. 412 and 408 North Mill Street, looking southeast
43. 517 North Mill Street, looking northwest
44. 513 North Mill Street, looking northwest
45. 509 North Mill Street, looking west at façade and north side
46. 501 North Mill Street, looking northwest
47. 413 North Mill Street, looking west
48. 403 (non-contributing) and 407 North Mill Street, looking north
49. 311 North Mill Street, looking north
50. View looking north on Mill Street from St. Louis Court
51. Telephone Building, 301 East Main Street, looking northeast
52. 315 East Main Street, looking north
53. 407 (non-contributing) and 419 East Main Street, looking northwest
54. 503 East Main Street, looking northeast
55. 507 and 513 (non-contributing) East Main Street, looking north
56. Contributing garage to rear of 507 East Main Street, looking east
57. 517 East Main Street, looking north
58. Contributing garage at 517 East Main Street, looking north
59. 517 and 523 East Main Street, looking northwest
60. Reformed Church, 619 East Main Street, looking north
61. Reformed Church, 619 East Main Street, looking northwest
62. 805 East Main Street, looking north
63. 813 East Main Street, looking northwest
64. 903 East Main Street and contributing garage, looking northeast
65. 903, 909 and 917 East Main Street, looking northeast from Silver Street
66. Contributing garage to the rear of 909 East Main Street, looking west
67. 917 East Main Street, looking north
68. 917 East Main Street, west elevation, looking southeast
69. 122 North Silver Street and 903 East Main Street, looking southeast
70. 902 Washington Avenue, looking south
71. 812 Washington Avenue, looking south
72. 203 North Silver Street, looking west
73. 318 and 306 (non-contributing) East Main Street, looking southwest
74. Former Louisville Post Office, 504 East Main Street, looking south
75. Former Louisville Post Office, 504 East Main Street, rear elevation and loading dock, looking northwest

United States Department of the Interior
National Park Service

**NATIONAL REGISTER OF HISTORIC PLACES
CONTINUATION SHEET**

**Louisville Historic District
Stark County, Ohio**

Photos
Page 3

76. 600, 528 and 500 East Main Street, looking southeast
77. 520 East Main, looking southeast
78. 528 and 520 East Main Street, looking southeast
79. 600 East Main Street, looking southeast
80. Contributing garage to the rear of 600 East Main Street, looking east
81. 612 East Main Street, looking south
82. Contributing garage to the rear of 612 East Main Street, looking west
83. South side of East Main Street, looking southeast from Edwards Street
84. 718, 716 and 710 East Main Street, looking southwest
85. 802 and 718 East Main Street, looking southeast
86. Contributing garage to the rear of 802 East Main Street, looking northeast
87. 808 East Main Street, looking south
88. Contributing garage to the rear of 808 East Main Street, looking northwest
89. 126 Church Street, looking east
90. Former Post Office and 119 Church Street, looking southwest
91. 125 and 119 Church Street, looking northwest
92. 118-120 and 122 South Walnut Street, looking southeast
93. Looking north on South Walnut Street from Center Court
94. 126, 202 and 206 Church Street, looking east
95. Center Court, looking east from South Walnut Street
96. Contributing garage to the rear of 510-512 Center Court
97. Schaefer Court, looking west from South Silver Street
98. 414, 408 and 400-402 East Gorgas Street, looking east
99. 400-402 East Gorgas Street, looking south
100. 408 East Gorgas Street, looking south
101. Contributing garage to rear of 408 East Gorgas Street, looking northwest
102. 414 East Gorgas Street, looking southwest
103. 414, 408 and 400-402 East Gorgas Street, looking southwest
104. 500 East Gorgas Street, looking south
105. 506 East Gorgas Street, looking southeast
106. 501 (non-contributing), 507 and 511 East Gorgas Street, looking northeast
107. 507 and 511 East Gorgas Street, looking northwest
108. 822 and 816 East Gorgas Street, looking east
109. South Silver Street, looking north from East Gorgas Street
110. East Gorgas Street, looking northeast from South Silver Street
111. 905 and 917 East Gorgas, looking northeast
112. 927 East Gorgas, looking north
113. North side East Gorgas Street, looking northeast from 1007 East Gorgas
114. North side East Gorgas Street, looking northeast from 1023 East Gorgas
115. North side East Gorgas Street, looking northeast from 1111 East Gorgas
116. South side East Gorgas Street, looking east from South Silver Street

United States Department of the Interior
National Park Service

**NATIONAL REGISTER OF HISTORIC PLACES
CONTINUATION SHEET**

**Louisville Historic District
Stark County, Ohio**

Photos

Page 4

117. South side East Gorgas, looking east from 1106 East Gorgas
118. East side Superior Street, looking south from 216 Superior
119. West side Superior Street, looking south from 217 Superior
120. House Type A, 1007 East Gorgas Street
121. House Type B, 1111 East Gorgas Street
122. House Type C, 216 Superior Street
123. House Type D, 900 East Gorgas Street

ATTACHMENT A – Historic Maps
Louisville Historic District, Stark County, Ohio

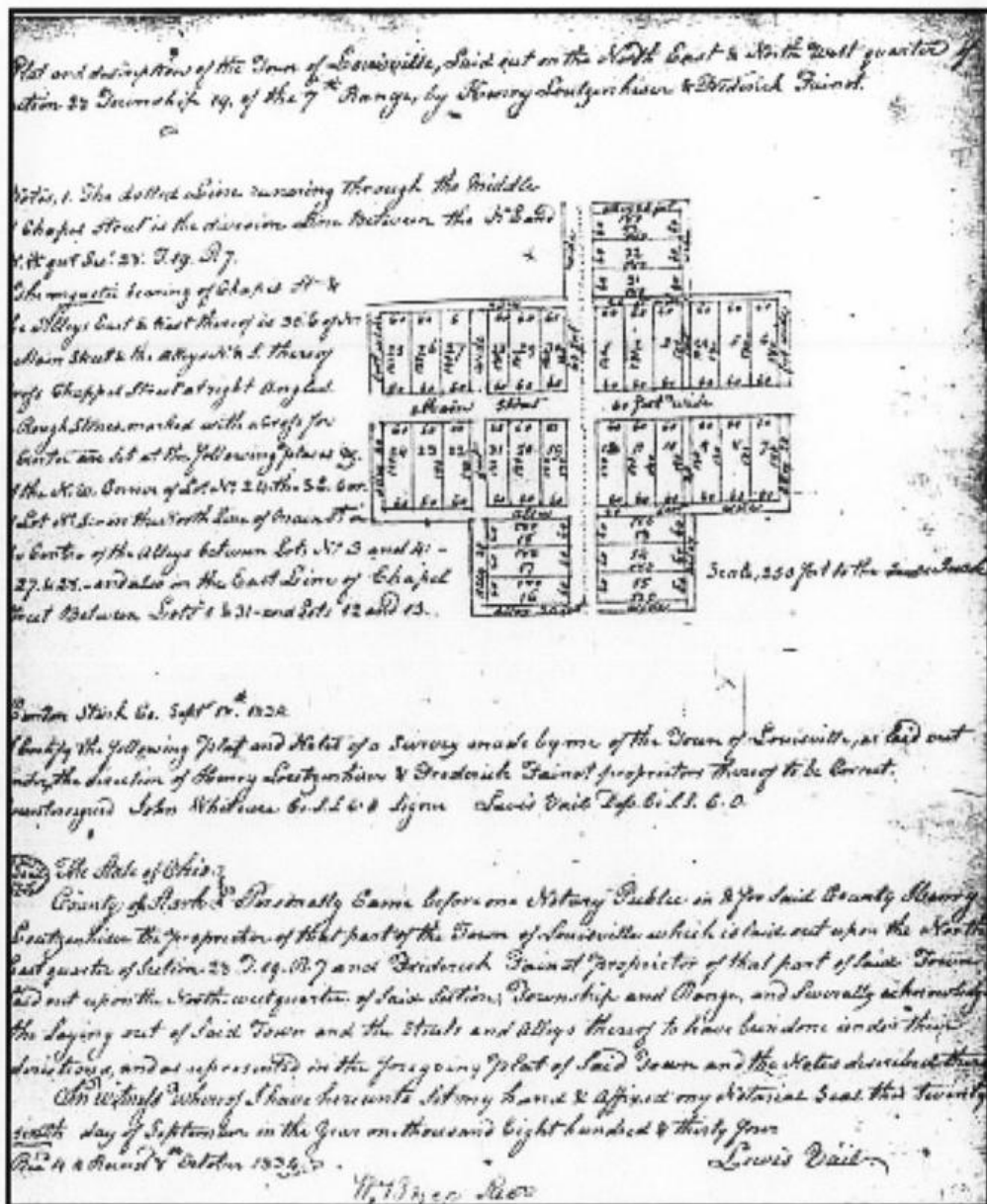


FIGURE 1: 1834 Louisville Plat

ATTACHMENT A – Historic Maps
 Louisville Historic District, Stark County, Ohio

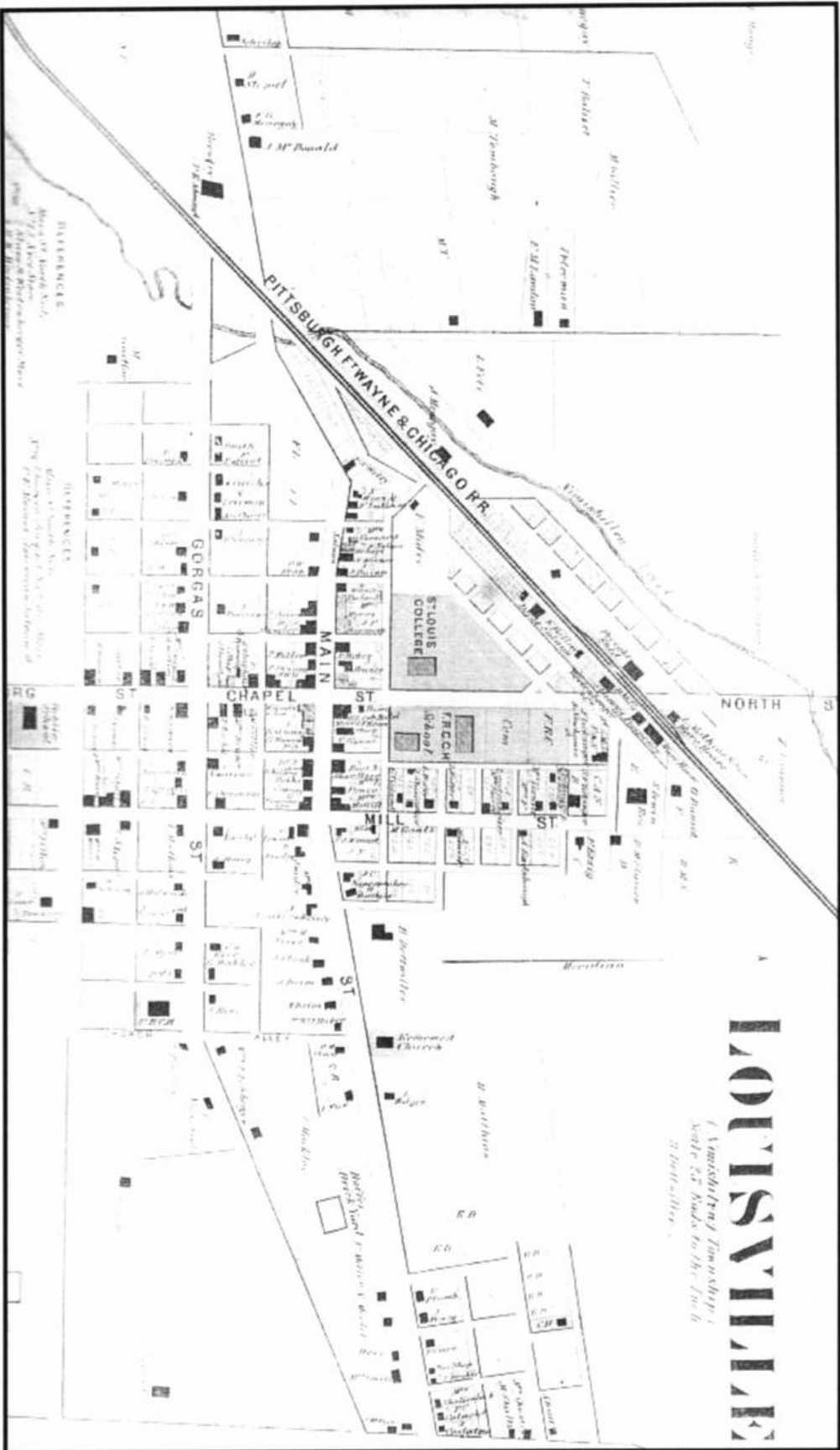


FIGURE 2: 1870 Atlas

ATTACHMENT A – Historic Maps
 Louisville Historic District, Stark County, Ohio

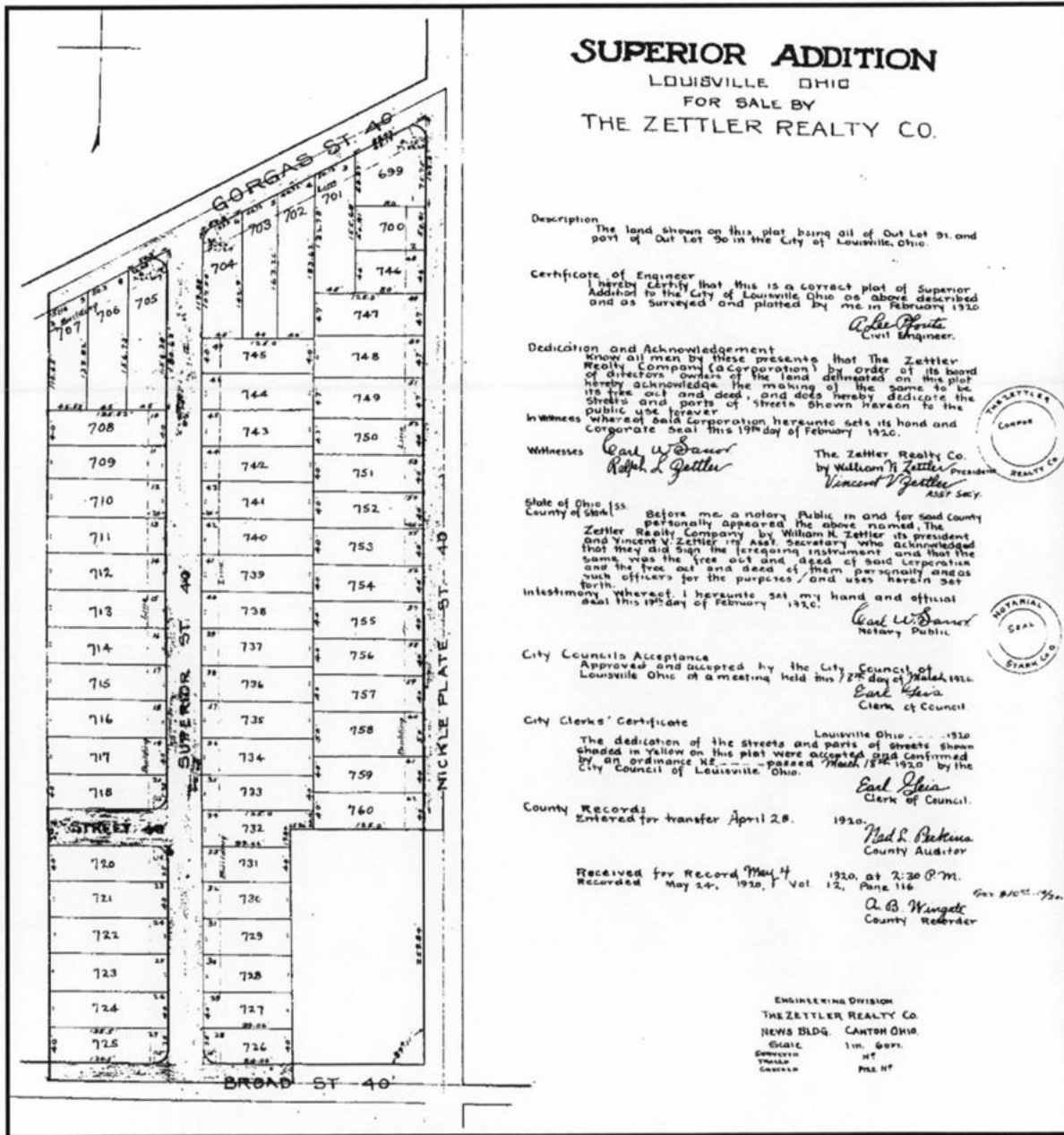


FIGURE 5: Zettler Realty Superior Addition, 1920

ATTACHMENT A – Historic Maps
Louisville Historic District, Stark County, Ohio

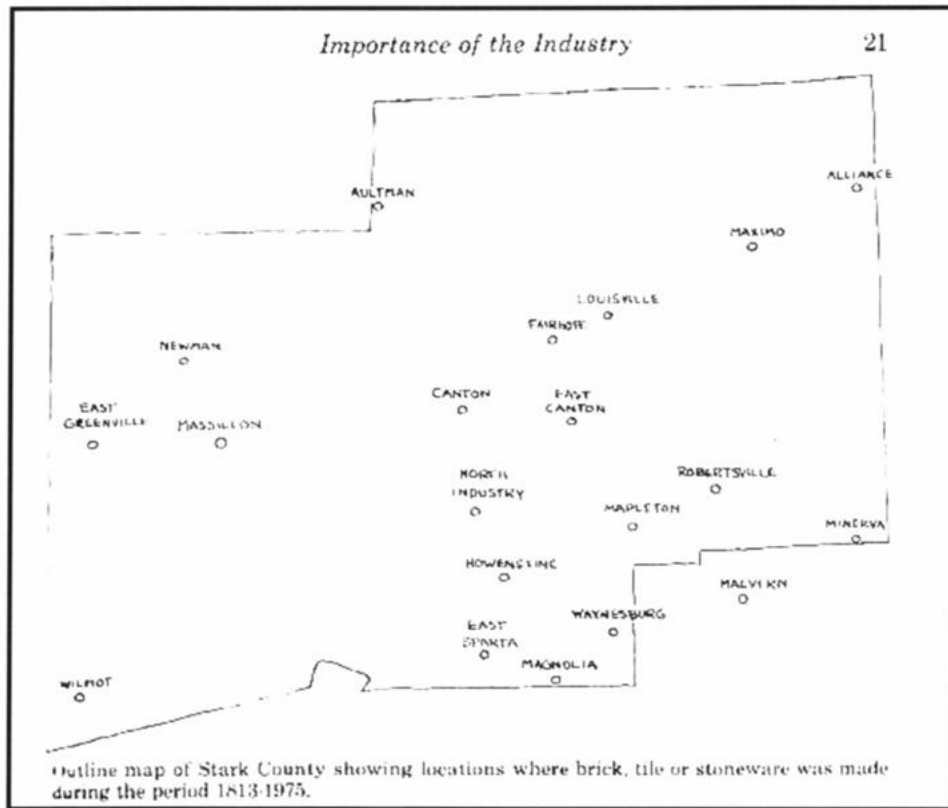


FIGURE 6: Stark County clay products, from *The Brick and Tile Industry in Stark County 1809-1976*

ATTACHMENT B – Historic Photos
Louisville Historic District, Stark County, Ohio

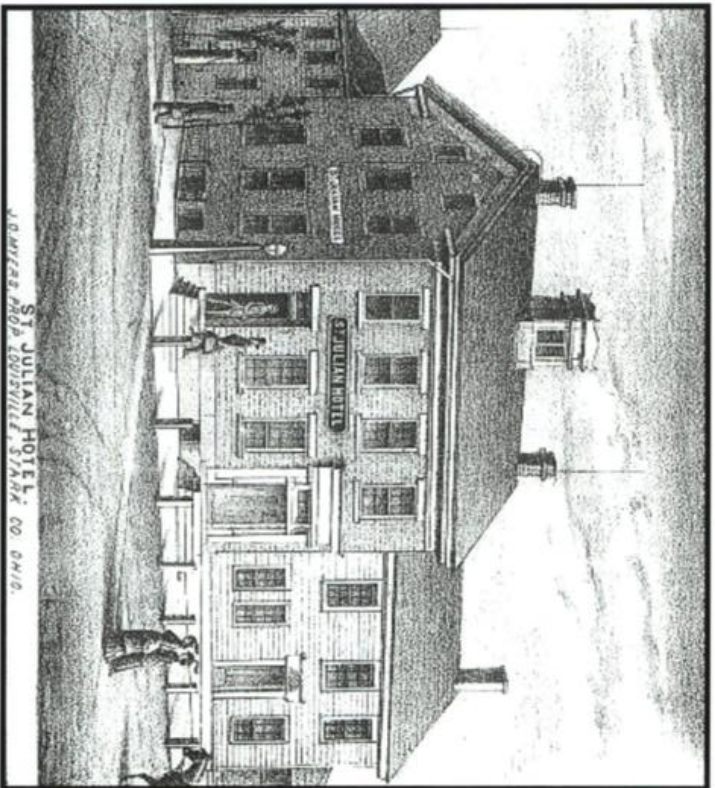


FIGURE 1: 1845 Vignos Tavern, from 1875 County Atlas

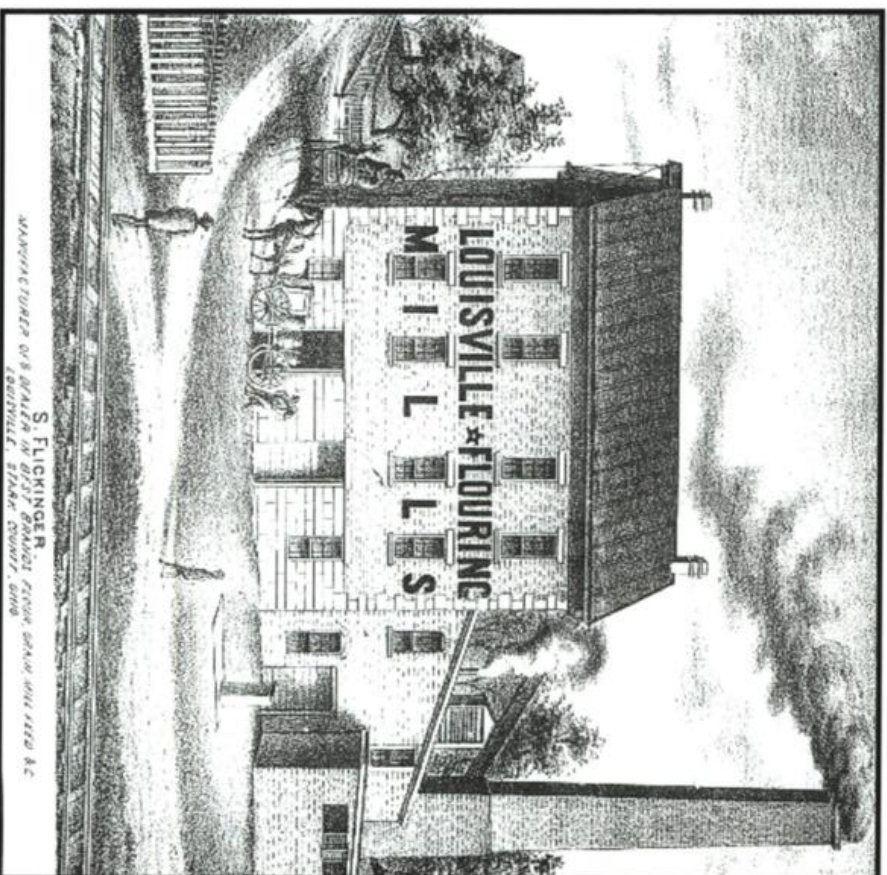


FIGURE 2: 1848 Mill, from 1875 County Atlas

ATTACHMENT B – Historic Photos
Louisville Historic District, Stark County, Ohio

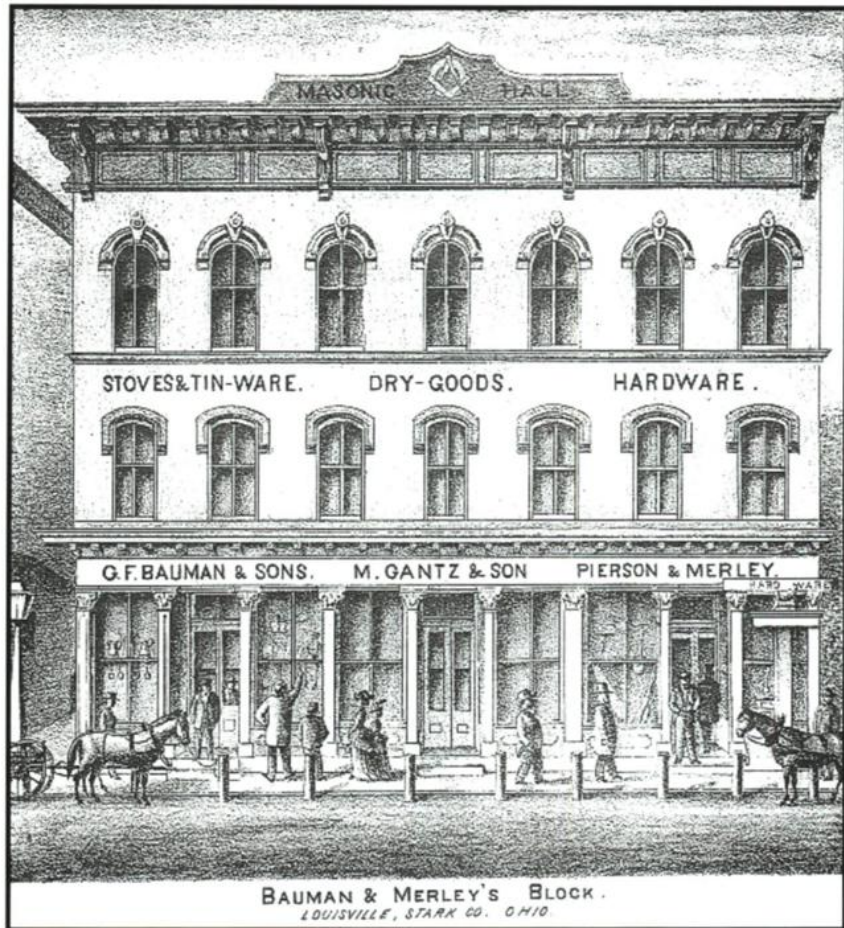


FIGURE 3: 1873 Bauman Block, from 1875 County Atlas

ATTACHMENT B – Historic Photos
Louisville Historic District, Stark County, Ohio



FIGURE 4: Bonnot House, 917 E. Main, c.1903, from *Louisville – The Way It Was 1834-1975*



FIGURE 5: Keim Block, c.1905, from *Louisville, Ohio Through the Years 1834-1984*

ATTACHMENT B – Historic Photos
Louisville Historic District, Stark County, Ohio



FIGURE 6: 125 E. Main, Kagey Grocer, date unknown, from Louisville Public Library files

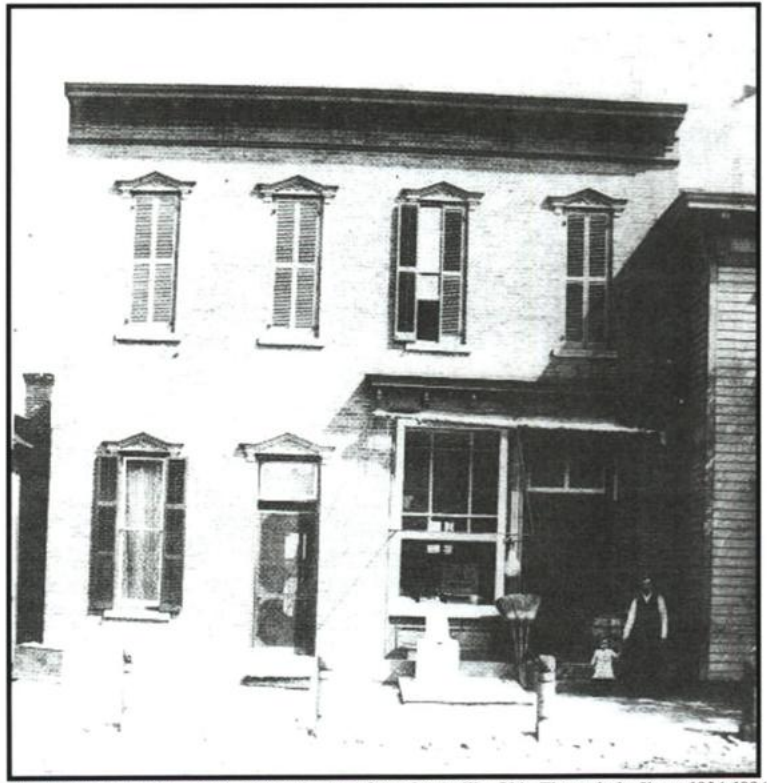


FIGURE 7: 213-217 E. Main, date unknown, from *Louisville, Ohio Through the Years 1834-1984*

ATTACHMENT B – Historic Photos
Louisville Historic District, Stark County, Ohio



FIGURE 8: E. Main, looking southeast, date unknown, from *Louisville – The Way It Was 1834-1975*



FIGURE 9: Schilling Block, 1914, from *Louisville – The Way It Was 1834-1990*

ATTACHMENT B – Historic Photos
Louisville Historic District, Stark County, Ohio



FIGURE 10: East Main Street Postcard View, c. 1915

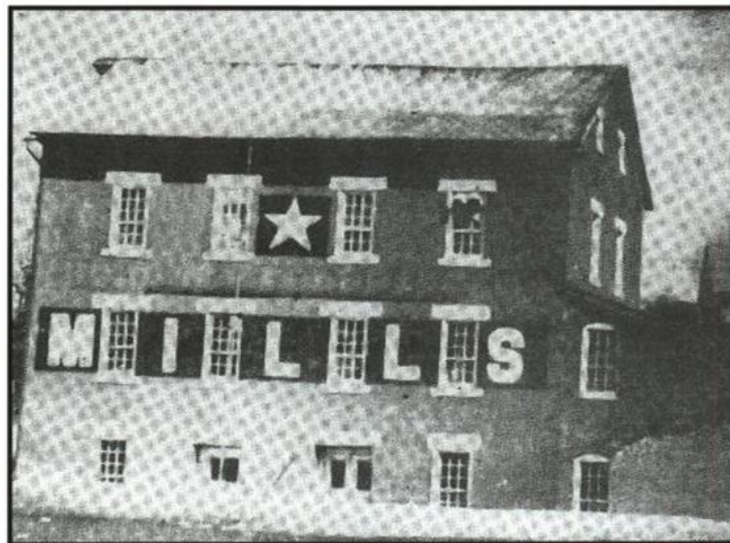


FIGURE 11: Star Mill, 1930, from *Louisville – The Way It Was 1834-1975*

ATTACHMENT B – Historic Photos
Louisville Historic District, Stark County, Ohio



FIGURE 12: E. Main, looking northwest - 213-217 E. Main in foreground, 1959, from Stainless & Strip

ATTACHMENT B – Historic Photos
Louisville Historic District, Stark County, Ohio



FIGURE 13: 1977 (Vignos) (St. Julian) Union Hotel. M. Boron, Photographer

Louisville Historic District, Louisville, Stark County, Ohio

Address	Street	Contributing Building	Non-contributing Building	Contributing Outbuilding or Structure	Non-contributing Outbuilding or Structure
506	Center Ct.	1		1	
510-12	Center Ct.	1		2	
114-118	N. Chapel St.	1			
134	N. Chapel St.	1			
214	N. Chapel St.	1			
300	N. Chapel St.				
314	N. Chapel St.	1			1
134	S. Chapel St.	1			
119	Church St.	1			
125	Church St.	1			
126	Church St.	1			1
202	Church St.	1			
206	Church St.	1			
400-402	E. Gorgas St.	1		1	
408	E. Gorgas St.	1		1	
414	E. Gorgas St.	1			
500	E. Gorgas St.	1			
501	E. Gorgas St.		1		1
506	E. Gorgas St.	1			
507	E. Gorgas St.	1		1	
511	E. Gorgas St.	1		1	
816	E. Gorgas St.	1		1	
822	E. Gorgas St.	1			1
900	E. Gorgas St.	1		1	
905	E. Gorgas St.	1			
906	E. Gorgas St.	1		1	
912	E. Gorgas St.	1		1	
916	E. Gorgas St.	1		1	
917	E. Gorgas St.	1		1	
921	E. Gorgas St.	1		1	
926	E. Gorgas St.	1		1	
927	E. Gorgas St.	1			

Louisville Historic District, Louisville, Stark County, Ohio

Address	Street	Contributing Building	Non-contributing Building	Contributing Outbuilding or Structure	Non-contributing Outbuilding or Structure
930	E. Gorgas St.	1		1	
934	E. Gorgas St.	1		1	
935	E. Gorgas St.		1		
1002	E. Gorgas St.	1			1
1006	E. Gorgas St.	1		1	
1007	E. Gorgas St.	1		1	
1011	E. Gorgas St.	1		1	
1012	E. Gorgas St.	1		1	
1015	E. Gorgas St.	1		1	
1016	E. Gorgas St.	1		1	
1023	E. Gorgas St.	1		1	
1025	E. Gorgas St.	1		1	
1100	E. Gorgas St.	1		1	
1103	E. Gorgas St.	1		1	
1106	E. Gorgas St.	1		1	
1107	E. Gorgas St.	1		1	
1111	E. Gorgas St.	1		1	
1112	E. Gorgas St.	1		1	
1116	E. Gorgas St.	1		1	
1117	E. Gorgas St.	1		1	
1124	E. Gorgas St.	1			
200	Lincoln Ave.	1		4	
205	Lincoln Ave.	1			
217	Lincoln Ave.	1		1	
100	E. Main St.	1			
101-105	E. Main St.	1			
108	E. Main St.		1		
110	E. Main St.		1		
109-113	E. Main St.	1			
112-114	E. Main St.	1			
117	E. Main St.	1			
120	E. Main St.	1			

Louisville Historic District, Louisville, Stark County, Ohio

Address	Street	Contributing Building	Non-contributing Building	Contributing Outbuilding or Structure	Non-contributing Outbuilding or Structure
121	E. Main St.	1			
125	E. Main St.	1			
126-132	E. Main St.	1			
131-135	E. Main St.	1			
200-210	E. Main St.	1			
201-205	E. Main St.	1			
211	E. Main St.	1			
212-218	E. Main St.	1			
213-217	E. Main St.	1			
225-231	E. Main St.	1			
226-228	E. Main St.	1			
230-234	E. Main St.	1			
301	E. Main St.	1			
306	E. Main St.		1		
315	E. Main St.	1			
318	E. Main St.	1			
407	E. Main St.		1		
419	E. Main St.	1			
503	E. Main St.	1			
504	E. Main St.	1			
507	E. Main St.	1		1	
513	E. Main St.		1		
517	E. Main St.	1		1	
520	E. Main St.	1			1
523	E. Main St.	1			
528	E. Main St.	1		1	1
600	E. Main St.	1		1	1
612	E. Main St.	1		1	
619	E. Main St.	1			1
706	E. Main St.	1			1
710	E. Main St.	1			1
716	E. Main St.	1			1

Louisville Historic District, Louisville, Stark County, Ohio

Address	Street	Contributing Building	Non-contributing Building	Contributing Outbuilding or Structure	Non-contributing Outbuilding or Structure
718	E. Main St.	1		1	
802	E. Main St.	1		1	
805	E. Main St.	1			
808	E. Main St.	1		1	
813	E. Main St.	1			1
903	E. Main St.	1		1	
909	E. Main St.	1		1	
917	E. Main St.	1			
111	N. Mill St.	1			
307	N. Mill St.	1			
311	N. Mill St.	1		1	
403	N. Mill St.		1		
407	N. Mill St.	1		1	
408	N. Mill St.	1			
412	N. Mill St.	1			
413	N. Mill St.	1		1	1
501	N. Mill St.	1			1
502	N. Mill St.	1		1	
509	N. Mill St.	1			1
512	N. Mill St.	1		1	
513	N. Mill St.	1			
517	N. Mill St.	1		2	
518	N. Mill St.	1		1	1
115	S. Nickelplate Ave.	1			
704	Schafer Ct.	1			
710	Schafer Ct.	1			
714	Schafer Ct.	1		1	
718	Schafer Ct.	1		1	

Louisville Historic District, Louisville, Stark County, Ohio

Address	Street	Contributing Building	Non-contributing Building	Contributing Outbuilding or Structure	Non-contributing Outbuilding or Structure
800	Schafer Ct.	1		1	
122	N. Silver St.	1		1	
203	N. Silver St.	1			
203	S. Silver St.	1		3	
206	S. Silver St.	1			1
207	S. Silver St.	1			
211	S. Silver St.	1			
217	S. Silver St.	1			
223	S. Silver St.	1			1
210	Superior St.	1		1	
216	Superior St.	1		1	
217	Superior St.	1		1	
219	Superior St.	1		1	
220	Superior St.	1			
223	Superior St.	1		1	
226	Superior St.	1		1	
227	Superior St.	1			1
230	Superior St.	1		1	
233	Superior St.	1			
303	Superior St.	1			
312	Virginia Ave.	1		1	
315	Virginia Ave.	1		1	
319	Virginia Ave.	1			
323	Virginia Ave.	1			
327	Virginia Ave.	1		1	
118-120	S. Walnut	1		1	
122	S. Walnut	1		1	1
123	S. Walnut	1		1	
812	Washington Ave.	1			

UNITED STATES DEPARTMENT OF THE INTERIOR
NATIONAL PARK SERVICE

NATIONAL REGISTER OF HISTORIC PLACES
EVALUATION/RETURN SHEET

REQUESTED ACTION: NOMINATION

PROPERTY NAME: Louisville Historic District

MULTIPLE
NAME:

STATE & COUNTY: OHIO, Stark

DATE RECEIVED: 10/14/11 DATE OF PENDING LIST: 11/02/11
DATE OF 16TH DAY: 11/17/11 DATE OF 45TH DAY: 11/29/11
DATE OF WEEKLY LIST:

REFERENCE NUMBER: 11000856

REASONS FOR REVIEW:

APPEAL: N DATA PROBLEM: N LANDSCAPE: N LESS THAN 50 YEARS: N
OTHER: N PDIL: N PERIOD: N PROGRAM UNAPPROVED: N
REQUEST: N SAMPLE: N SLR DRAFT: N NATIONAL: N

COMMENT WAIVER: N

ACCEPT RETURN REJECT 11.22.11 DATE

ABSTRACT/SUMMARY COMMENTS:

Entered in
The National Register
of
Historic Places

RECOM./CRITERIA _____

REVIEWER _____ DISCIPLINE _____

TELEPHONE _____ DATE _____

DOCUMENTATION see attached comments Y/N see attached SLR Y/N

If a nomination is returned to the nominating authority, the nomination is no longer under consideration by the NPS.