



WOODBITS

NEWSLETTER

Issue 195

August 2022

Welcome

SHAVINGS FROM THE CHAIRMAN

Hello

We had another excellent demo from Les Thorne on the 9th August who entertained us with a mass of useful tips and wrinkles, all delivered with the usual good humoured banter.

Apologies for the problems setting up the audio-visual systems which was due in part to the two Club IT “experts” being on holiday, but we got there in the end. We are looking for a volunteer to take on the setting up of the AV system for each meeting, so if anyone would like to step up to do this for the club, please contact me or any committee member.

Training Initiatives

In my July Shavings, I didn’t say anything about the very successful 2nd July all day training session we held at Adeyfield. We have had positive feedback from our trainees, and are most grateful to our intrepid team of trainers: Adam Blackie, Alan Lewis, Allen Kaye, Chris Bentley, Harvey Alison and Peter Hoare for their hard work in making the event go so well.

Looking forward to future training initiatives, Adam is leading on exploring the possibility of getting professional training for club members from a registered local professional turner. The plan would be for a small group (up to about four members) to attend a training session at the premises of the tutor with the cost subsidised by the Club to make it more affordable for all those wishing to participate. These sessions would be in addition to our in house training sessions held at Adeyfield. We are also exploring the possibility of providing some voluntary teacher training to our trainer team. Watch this space for more details.

Looking forward to future training sessions at Adeyfield, it looks likely that in future, these will be on a Sunday and located in the Training Room at Adeyfield (where they used to be held), as the main hall is fully booked up for the foreseeable future.

Competition ticking off

No, this isn’t a telling off but an earnest request! Please can everyone attending the Adeyfield meetings support those members who have submitted competition entries by casting their votes. Examine the items submitted for each of the three competition categories (Beginners, Masters and Open) and put a tick on the piece of paper next to what you consider to be the winning item in each category. So only three

ticks required one for each category, pens/pencils are provided. We are getting some really good entries on the competition table so it's well worth a look.

Sales table

Any woodturning or woodworking items (tools, magazines or books) surplus to your requirements will be very welcome on the sales table to raise funds for the club's core activities. If you have any potential items or any queries as to item suitability contact Derek Stephens (sales table coordinator) during an evening session.

Tool lending library

This initiative managed by Adam is really taking off now with some great bits of kit available for any member to borrow. See Adam's latest update in this issue of *Woodbits*. As well as newsletter updates we are planning to put a list of items on the website which will hopefully make members more aware of what's available. Any requests for new library items are also welcome, please contact Adam or any member of the committee.

Chairman's Shaving of the Month

On the 16th August I visited the RHS Gardens at Wisley (Surrey) which as well as flowers and shrubs feature some magnificent trees. They have a "resident" woodturner who must have a fantastic opportunity of turning waste wood from the arboreal management of the site. A varied selection of his work was on sale in the shop together with some interesting notes which included the following intriguing snippet. Most of the wood is turned green and, to avoid it splitting, he places each turning for 60 minutes fully submerged in boiling water. It is then left to dry naturally until fully seasoned when it can be re-mounted on the lathe for completion. This apparently reduces uneven drying and the risk of the wood checking and splitting. I have not come across that technique before but as an avid green-wood turner I am definitely going to try it out and see if it is a viable option.

Well that's all from me but I shall look forward to seeing everyone at the September meeting.

Tim

Chairman: Tim Pettigrew chairman@hertsandbedswoodturners.co.uk
Treasurer: Adam Blackie treasurer@hertsandbedswoodturners.co.uk
Secretary and Newsletter Editor: Allen Kaye secretary@hertsandbedswoodturners.co.uk

CONTENTS

SHAVINGS FROM THE CHAIRMAN	1
Club News	4
August Competition	4
Meetings Calendar 2022	9
Club Sweatshirts and Polo shirts.....	9
Raffle	9
Competition Subjects 2022.....	10
Project Table	10
Axminster Discount.....	10
Video Loan	10
July Demonstration - Les Thorne	10
Follow up from Roger Stafford	12
PROJECTS	14
Phil Scoltock – Maple Leaf Platter	14
DIY Sanding Discs Tip - Keith Goddard	16
Notes on making pens - Tony Taylor	17
TOOL LENDING LIBRARY - UPDATE from Adam Blackie.....	19
Woods A-Z.....	21
For Sale/Wanted	22
Record Power AC400	22
Lathe and related equipment for sale	22
Oak Wood wanted	24
Poetry Corner.....	26

Club News

August Competition

This month, the judging was by member vote. Photos by Don Guy

Beginners



1st Place – Tony Buttle

2nd Place – Phil Walters



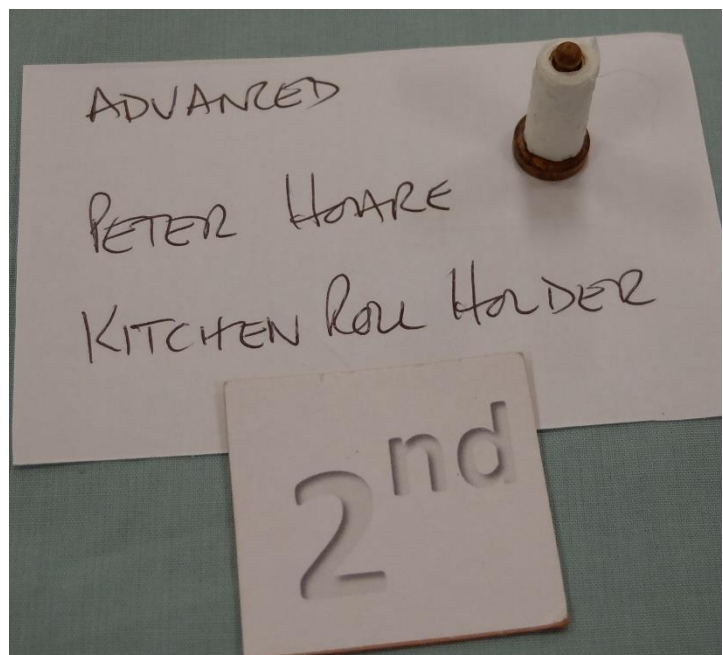
Advanced



1st Place – Don Guy

2nd Place – Peter Hoare

PS – I left label in the shot to show scale ..



2nd Place – Keith Goddard)



Open

1st Place – Peter Hoare





2nd =Place - Keith Goddard

2nd =Place - Graham Lester



2nd =Place - Mark Aizcowitz



2nd =Place - Don Guy

Meetings Calendar 2022

13th Sept	Club Night (includes demo by Graham Lester)
11th Oct	Carlyn Lindsey
8th Nov	Jon Bailey Pole Turning Demonstration
13th Dec	Christmas Social

Club Sweatshirts and Polo shirts

These are available from Mike Sheaf. They are blue and inscribed with the club logo. You can also add your name embroidered at no extra cost.

Sweatshirt. £19.00

Polo Shirt. £16.00.

Polo Shirt Long sleeves. £17.00.

Sizes S, M, L, XL, XXL, XXXL

Forms for ordering are available from Mike Sheaf or the secretary. All forms to be returned to Mike.

Profits go to the Rennie Hospice

For more details or to order see Mike at one of our meetings or email him at:

michael.sheaf@gmail.com

Raffle

I am always looking for the usual helpers and newbies to help buy the goodies for the raffle. Please contact me if you can help.

At the moment only May is covered and I need volunteers for the rest of the year. As a volunteer you would be responsible for choosing and buying a selection of up to 6 prizes up to a total of £60 and then bringing them along to the meeting where I will recompense you for the money spent.

If you commit to a particular night but need to swap it contact me so that cover can be maintained

Full receipts are required for each spend made

If you need to discuss any of this information with me, feel free to do so

Steve Beadle

Herts and Beds Raffle Coordinator

Tel 07720 677456

Email ~ Stevebeadle1960@hotmail.co.uk

Competition Subjects 2022

Month	Beginners	Advanced
Sep	Apple	Table lamp
Oct	Bottle stopper	Candle stick
Nov	Tool handle	tba
Dec	Christmas tree	A toy

Project Table

Any and all items are welcomed for the project table. These will not be judged and might include unfinished items as well as ones that 'did not quite work out as planned'

Axminster Discount

Axminster are still offering a 5% discount for club members. There are some limitations on machinery so check first and this only works for in-store purchases. Take your AWGB and Club membership cards to get the discount.

Video Loan

The video box was out on the sales table in July and two videos loaned by members. They will be available by the sales table during all meetings in the future – no charge to borrow with an expectation that they will be returned by the following meeting.

Allen.

July Demonstration - Les Thorne

Notes from Tim Pettigrew. Photos by Don Guy

In the first half Les demonstrated making a small Sapele box with lidded finial accompanied by lots of tips and tricks as regards hollowing and work holding.





After the break, Les made a candlestick, demonstrating aspects of faceplate turning for the base and spindle turning for the holder. He then showed how to achieve a faux french polish finish on the candlestick using a Hampshire Sheen Earth water based stain and then a mixture of Hampshire Sheen melamine lacquer and microcrystalline wax.

Follow up from Roger Stafford

This was my first meeting as I usually have another thing on a Tuesday, so it was great to catch such an expert and teacher as Les. I have seen lots of turned boxes, but never tried one till I watched Les doing it.



I was not entirely happy with the shape of my box – maybe a bit like an urn for a late-lamented cremated pet mouse), but that doesn't matter for the first few, does it!

I made it from a scrap of ash that I had kicking around, which is probably why it is a bit too narrow. It was so easy to follow Les' explanation that the key points he wanted to get across stuck in my mind and I was happy with how they turned out.

I haven't done all that much turning, a bit in school (a very long time ago), some pole lathe turning more recently, but just got myself a powered lathe a few months ago, so lots to learn and probably lots to spend ;-).

Roger Stafford



PROJECTS

Phil Scoltock – Maple Leaf Platter

This was my 2nd attempt at a Maple Leaf Platter. I wanted to make a bigger one, thin but not fragile (my first one was far too flexible (close to breaking)) . Same wood Goncalo Alves (Brazilian Tigerwood) which has nice grain but I wanted this to be different so I intended to elevate it somehow.

Not a super difficult project – but one that takes great care and some patience:

- Off centre turning at low RPM is slow going
- The edges expose the thickness across the whole piece, so it is best if it is very accurately the same thinness from edge to centre – which takes care/skill.
- Cutting the leaf out with a saw also takes care
- Cleaning up the sawn outline with sandpaper is borderline tedious.

I had to incorporate a few constraints:

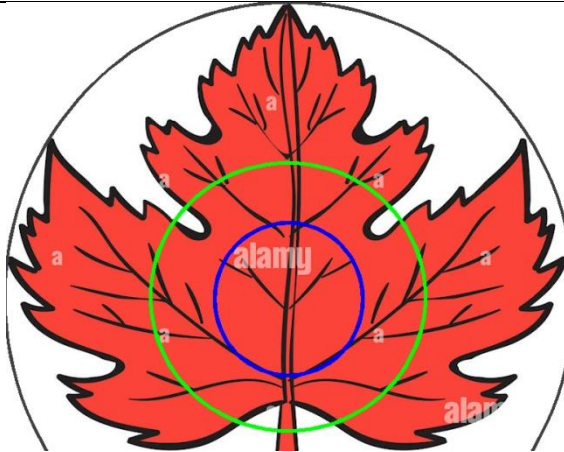
- Swing on the lathe is 320mm \varnothing
- Tigerwood plank is 220mm wide



Start point was Google image search to find a reasonably realistic leaf outline I liked.

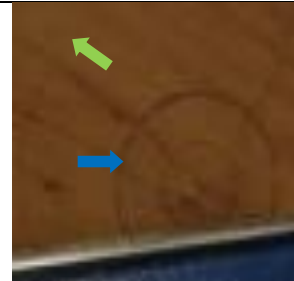
Using some graphics software – resized the image so that the grey circle is 300mm (i.e. lathe swing) and the leaf is 220 tall (i.e. the planks width). Print it.

The plank is only 37mm thick so I can't afford to waste wood on a foot. The platter can sit flat on its back, curving the tips of the leaf upwards and a shallow relief in the middle so that the leaf has a large contact area (the green ring) on the back so it doesn't rock and the blue ring represents a 60mm chuck recess, the leaf outline is saw after turning, so a recess as per the blue circle is strong enough



But to get this on the lathe and have it rotate I am going to have to remove all the "corners" off of the blank to get it close to round so that it will spin (that would be so much easier if only I had a bandsaw !! – I don't). Plus the piece is going to be very off centre – on a light weight midi lathe the RPMs will have to be super slow.

Mounted on a 60mm tenon faceplate that will be held in my chuck (very shallow screws!). "Blue" and "green" rings drawn on the back.



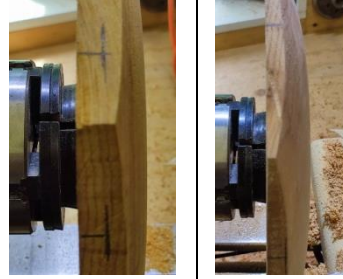
Draped a bag of sand over the lathe bed bars to add some weight/ballast because it is so out of balance and tricky project (Tigerwood is an extremely dense and heavy wood, and this is a light lathe) RPMs are painfully slow so progress with turning is slow.



Small chucking recess done and decorated. The back has a very shallow relief from the foot (the green ring on the diagram) down to the chuck-recess.
From the foot, the back has a smooth gentle curve to what will be the leaf tips.



I was aiming for approx 8-9mm thick from edge to foot (green circle), with the back curving from the foot (green ring) to the tips. To get the curve, turn the corners/biggest diameters first and rather than aiming for 8mm at the corners (which would later be sawn off) instead I marked a few places where the tips of the leaf design would intersect with the edges of the blank i.e. it is these points that I need to hit for a 8mm thickness, being thinner at the corners that are later cut off didn't matter.



Your fingertips can find ridges and grooves that are tough to see when it is spinning, so I blacken them with a pencil and very carefully get the back smooth. The safest cut to remove just a whisper of wood to smooth out ridges and grooves is to shear scrape with a bowl gouge to remove "angel hair" shavings.



(Shear meaning steeply angled, rather than shear meaning to break off – shear scraping presents the cutting edge at a steep angle, shear scraping in contrast involves presenting the cutting edge horizontally which cuts more aggressively and more prone to tear out).

Demount, remove the tenon-faceplate, mount on the chuck a turn to consistent 8mm thickness from edge to where the green ring is – then dead flat across the area within the green ring.



The thinness of can be seen and measured somewhere along the edge of the off-centre blank – right from the max 135mm radius of what will be the leaf tips, to just inside the 50mm radius of the (green ring) foot.

Veritas callipers can measure thickness across the middle to the inside of the chuck recess, even whilst still mounted on the chuck – they are great way to avoid making funnels.

Cut around the outline of the leaf drawing, use it as a template to draw around.



My initial idea was to paint the leaf's veins on (copying the veins shown on the template). Prior to sawing, I tried painting veins using various HS Intrinsic colours in scrap areas.

To cut out the wooden leaf outline , a scroll saw would be awesome, not having one, I used a coping saw which took great care because the blades TPI is rather too aggressive for fine/fragile work. I did the sawing with the piece still on the chuck on the lathe, using the indexing head so that each cut was close to vertical which keeps the coping saws frame vertical.

Then remove from the lathe & chuck, used a Dremel burr where I could to remove the worst of the rough saw marks, then sand through the grades.

Initially I did use some sanding sealer then tried painting on the veins – I hated it – looked like a tree drawn by a 3yr old. So to make this different to the previous one I'd made – I decided to stain it to get Autumn colours (Fall colors !) – HS intrinsic Colours. Plum around edge. PearGreen& Honey in centre, graduating using the various orange shades.



DIY Sanding Discs Tip - Keith Goddard

Rather than buying Indasa Rhynogrip sanding discs for the Robert Sorby Sandmaster and finding using scissors tedious I discovered a 50mm hole punch (half radius) on eBay.

It is not quite the quality hole punch that I had hoped for but, kept sharp, it does work. Discs can be made in small batches as required and are a third of the price of ready made ones.

Two strikes with a heavy mallet on each half of the circle readily produces a new disc.

Keith Goddard



Notes on making pens - Tony Taylor

I have recently been called upon to make a large number of pens as little gifts for wedding guests. Since I had not made pens before, I had a lot to learn and thought that I might pass on a few ideas. The simplest way to get started is to buy a pen making kit, such as the Rotur. This consists of drills, an end trimming cutter and a mandrel on which the pieces are mounted in the lathe. Cheaper Chinese versions are to be found online, but delivery is slow and uncertain. These notes refer only to the slimline pen mechanism.

1. **Choice of wood.** Since only small pieces are needed, one can afford to use some choice pieces. The most interesting which I could find in my collection were Brazilian Tulip wood, Black Palmira, Panga Panga, Ovangkol, Yew, Mallee Burr, Elm Burr, Purple Heart, Walnut and Sonokeling. Black Palmira is very pretty with black and white streaks, but it is very liable to split and crack. Any burr wood is good because of its complex grain patterns. Some people like to use coloured acrylics, which can be bought as ready blanks or can be cast.

2. **Preparing the blanks.** Each pen needs two blanks, which can be cut on the bandsaw to 15 mm square and 55 mm long. Pen blanks offered for sale are generally bigger than this, but for the slimline pen 15 mm square is enough.

3. **Drilling.** It is possible to drill the blanks on the drill press, but you would need to make a jig to hold the pieces vertical and exactly centred. I found it much easier to mount the blank in pin jaws and to drill on the lathe. Some woods drill easily and cleanly without deviation of the drill. Others are more difficult and require you to keep easing and clearing the drill. To facilitate centering of the drill it is good to use a spindle gouge to cut a small dimple in the end of the blank. The nominal drill size is 7 mm, but the Rotur kit provides two extra at 7.1 and 7.2 mm diameter. According to the wood or Acrylic used, you may have to choose one of these. It is essential that the hole should allow the brass tube to be fitted in easily when dry, as if it is tight the tube will get stuck halfway when gluing.

4. **Fitting the brass tubes.** The brass tubes need to be lightly abraded to ensure a sound glue joint. It is usual to use Superglue (Cyanocrylate). In order to keep fingers clean, I found it best to hold a blank horizontally by one end in a vice, to insert the tube a short way, apply glue (medium thickness) to the exposed part, then promptly push the tube home with the pointed end of a pencil. This ensures that the tube will end just inside the wood at each end. Since you cannot apply accelerator effectively, it is best to leave the pieces several hours or overnight to be sure that the glue is fully hardened. In principle, it should be possible to use epoxy glue, but I hear that this can be messy and easily find its way into the inside of the tube.

5. **Trimming the blanks.** It is necessary to trim the wood exactly back to the brass tube. This is best done with the trimmer provided, mounted in a drill chuck in the tailstock and the blank mounted back in the pin jaws as when drilling. With the lathe at about 1000 rpm just advance the trimmer till you just see the glint of a tiny brass shaving. The trimmer blades will need sharpening occasionally using a diamond card, rubbing flat on the front surfaces. If the wood is very loosely grained like Black Palmira, you may find that the trimmer tears and splits the end. In this case you can do the trimming on a disc sander.



6. **Turning.** The mandrel is set up with the morse taper in the headstock and the parts slipped on in the sequence : spacer-blank-spacer-blank-spacer and held in place with the knurled brass nut. This must be tightened really well to prevent slippage whilst turning. Finally, bring up a live centre in the tailstock to press into the recess in the end of the mandrel. It is all too easy to drop one of the vital spacers or the brass nut in the shavings, so always place something to catch them when mounting or unmounting. The turning can all be done with a sharp small roughing gouge. Round both pieces to the same final desired diameter, then taper each end to exactly match the diameter of the spacer. You may find it easier to do this with a spindle gouge or with a skew. At all events, it is wonderful what a good final result can be achieved with sanding.

7. **Finishing.** When making a number of pens I found it simplest to sand to 600 grit, apply cellulose sanding sealer with a brush and wipe off. When dry, burnish with an orange Nyweb pad, apply carnuba wax stick then burnish. Of course, many other finishes are possible, such as Superglue, for a really high shine, but this is up to you.

Assembly. The slimline pen components come packed individually in little plastic bags. I found it best to cut them open over a tray, so that nothing was lost. You can buy rather expensive gadgets for pressing the parts together, but I found it perfectly satisfactory to use a wooden-faced carpenter's vice. Start by pressing the pen point into one half, then add the steel tube, brass end first, into the other end of this piece. Press it in just up to the mark and no further. Slip the little centre ring over the steel tube. Slip the pen insert in point first and screw it home. Now, attach the clip to the other part by pressing in the top stud. Finally slide the top on over the steel tube and push fully home. The inserts usually come with some sticky plastic over the tip, and this must be removed.

TOOL LENDING LIBRARY - UPDATE from Adam Blackie

2 NEW ITEMS this month.

Thanks to **Bob Marshall** who requested a **CAPTIVE RING CUTTER** and he helped out with it's sourcing for the library. It is used to produce rings that remain captured in the workpiece. It can be used Left and right handed and is 9.5mm 3/8" in diameter. Details can be seen here - <https://www.axminstertools.com/crown-cryo-captive-ring-tool-3-8-506467>



Bob also prompted the purchase of a **WOODCUT BOWLSAVER BOWL CORING SYSTEM**. The Woodcut Bowlsaver Bowl Coring System's simple design is easy to use for turners of all abilities. Core a (maximum size) 14" x 6" blank in less than five minutes.

Thanks also go to **Tim Pettigrew** who contributed a couple of spare Woodcut accessories from his workshop to improve the options available.

The options include ¾", 1" and 25mm toolpost holders and MT2 and MT1 tailstock adaptors. So it should fit most lathes.

Details can be seen here -

<https://www.axminstertools.com/woodcut-bowlsaver-bowl-coring-system-951128?>



Lending Library Status and Rules

This is intended as a lending library of the more esoteric or expensive tools that turners use infrequently.

The value to the club is that:

- members can try before they buy or
- members can borrow a tool for a specific job.

How does this work?

- To borrow a tool, simply contact Adam Blackie who will confirm availability and then arrange for the item to be available for collection.
- Items will be available for collection at the next club meeting, (or in person by arrangement.)

How long can I keep the tools for?

- This depends on the project, but generally we expect the tools to be returned in usable condition at the next available club meeting.
- Longer term loans by negotiation.

How much will it cost?

It's normally free of charge, however:

- If you break it or
 - If the tool uses consumable items (inc. sanding pads, grinding belts, stains and polishes)
- we would expect some contribution towards the replacement.

What else do I need to know?

Once the loan is completed we ask that you share a little about your experience of the tools with the club. E.g. Show and tell what you made or an article for the monthly newsletter.

Tool Library Contact

Adam Blackie

07941 270640

treasurer@hertsandbedswoodturners.co.uk

Library Items available		
	Cost	*Contribution towards costs
Robert Sorby ProEdge Plus (Deluxe System Pro Edge With MEGA BELT PACK)	499	Yes please
Tony Taylor Hollowing Jig	95	No
Hamlet Big Brother system 2 Hollowing system – A Ring Tool	145	No
Crown Captive Ring Cutter - 9.5mm 3/8"	60	No
Woodcut Bowlsaver Bowl Coring System	600	No
Other items requested but not yet available		
WoodArt products 35K Micro-drill detailer kit	210	No
Thread chasing toolset	75	No
Simon Hope Thread Cutting Jig	237	No
Paul Howard Fluting Jig + Indexing System	60	No

***Contribution is used to fund consumables for club library kit.**

** Other Tool suggestions received	Cost
Crown spiralling & texturing tools with accessories	95
Axminster pen mandrel and accessories	85
Paul Howard Sphere Jig	193
Pyrography machine	140
Airbrush + mini compressor	99

** the following have been suggested but not yet purchased.

If you would like us to prioritise any of these items for the Library please talk to a committee member.

Woods A-Z

Continuing the series on woods used in Woodturning – we are now at I – in this case for Ironwood

Ironwood

This wood is extremely hard and abrasive. It is one of the heaviest woods on earth and is often called leadwood. There are many different specific ironwoods but all have similar characteristics.

It will not split. Ironwood will almost grind your cutting tools back while you are trying to cut the wood. It is a wonderful wood on the lathe, particularly to make ornamental items.

It makes nice inlays, but only for small ornamental accent areas. It doesn't grow very big here, so having ironwood lumber is not a possibility. Some people have noted that when it is cut, you can actually sometimes see sparks from the chainsaw as the bar makes its way through the wood.

It has a straight and even grain with a very fine texture and high natural luster.

Although an exotic wood This wood species is not listed in the CITES Appendices or on the IUCN Red List of Threatened Species.

PS Identify trees with a FREE Tree ID app - Whilst researching the net for info on woods, I came across this free Tree ID app for Android and iPhone. It's an A-Z tree guide in your pocket from the Woodland Trust.

[Download the app](#)

Allen

AWGB

2022 Seminar: AWGB will shortly be launching the 2022 Seminar which will be held at Yarnfield Park, Staffordshire on the 7-9th October 2022.



For Sale

Record Power AC400

Harvey Alison has a Record Power AC400 overhead dust extractor that is surplus to requirements. He is looking for £100.



If you are interested, please contact Harvey direct at: harvey@blackwatermusic.net

-----oooOOOooo-----

Lathe and related equipment for sale

I was approached by a non-member who has a number of items for sale. See details below. If you have interest in any of them please contact him directly. His name is Tim Vellacott. mobile 07854 070401; Email tim@radicalmoon.co.uk (based in central St Albans).

A Wood-turning Lathe and fittings (£200 or near offer)



A1. Record Power Coronet No. 1 Lathe (54 inch bars -> 36 inch bed)

- 1 Headstock with 1/2 HP (300W) motor (3 belt positions) with 3/4 inch, 16 TPI spindle
- 1 Tailstock
- 2 54 inch bars, a bit rusty

- 1 Tool rest
- 1 Standard Tool Rest mount (blue)
- 1 knurled nut (to protect spindle thread) 3/4 inch
- 1 Quick adjusting (Cam Lock) Tool Rest mount (green, type CL0/C)
- 1 Instruction Booklet
- Miscellaneous fittings and tools

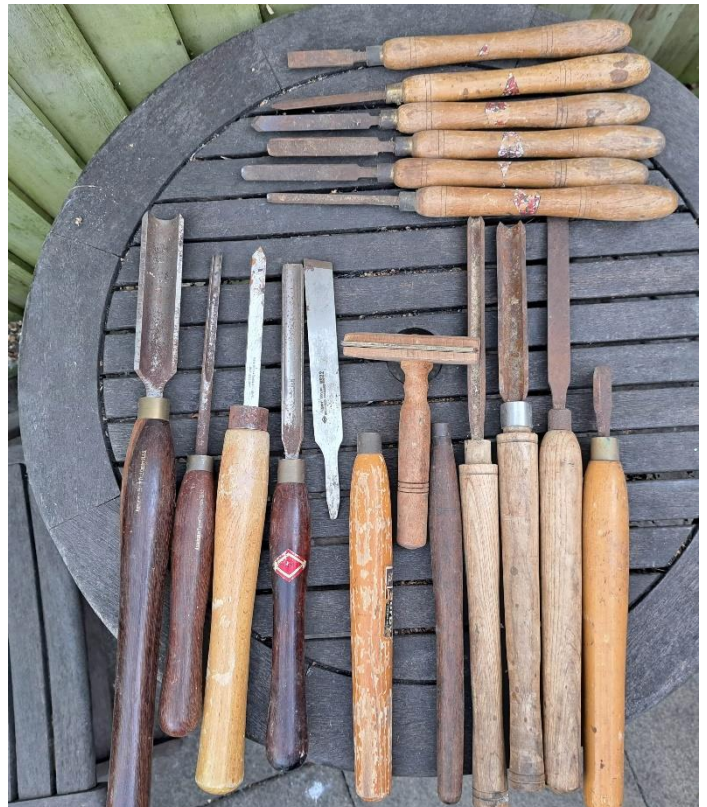
A2. Lathe Fittings



- 1 Faceplate 3/4 inch spindle
- 1 Faceplate 7/8 inch spindle, with centre screw and spacer
- 1 3/4 inch to 7/8 inch spindle adapter
- 1 chuck
- 1 collet holder, 7/8 inch spindle, with 3 contracting collets and 1 expanding collet
- 2 driving centres
- 1 rotating centre
- 1 non-rotating centre
- 1 knurled nut (to protect spindle thread) 7/8 inch

B. Wood Turning Tools (£150 or near offer)

- 5 HSS / HS41/ HS22 tools [bottom left in the picture]
- 4 carbon steel tools with long handles [bottom right in the picture]
- 6 carbon steel tools with short handles [top of the picture]
- 1 brass scraper [centre of the picture]
- 2 long handles [centre of the picture, each side of the scraper]



C. Router Dovetail jig (£120 or near offer)

- DeWalt DE6252 Router Dovetail Jig, boxed, never used
- Approx overall dimensions 750 x 200 mm / 29½ x 8 inch
- 610mm / 24 inch workable width
- Fixed guide fingers



D. Book (free to good home or to a club library)

- The Craftsman Woodturner, by Peter Child (1971, reprinted 1981)
- Very good condition, but with inscription (not by the author!).

-----oooOOOooo-----

Oak Wood wanted

I need a couple of pieces of oak around 300-400mm square and maybe 35mm deep for a project. I need the wood to be stable and dry and without knots. If anyone has any pieces that they would consider swapping for some other wood then please contact me and let me know what you are looking for. I have a variety of different species and sizes.

Allen Kaye

allen.kaye@bath.edu

Workshop opening flyer

Thanks to Gary Rance for bringing this to our attention.



**Your Invitation to the
Opening of our Workshop
on Friday 23rd September
from 2.30 – 5.30pm**

Join us in celebrating the post-lockdown opening of our Countryways workshop with its assorted lathes, traditional hand tools and more!

- Find out what we do and how your impact helps
- Learn about our plans for its further potential and host wider training opportunities
- Meet beneficiaries and see our workshop in action
- Enjoy light refreshments

What does the workshop already do?

- Provides a base to learn new skills and educates young people
- Nurtures confidence, coordination, trust, independence and team-work
- Impacts those with health and learning needs.

All this hosted in heritage surroundings on our working farm in the Chiltern Hills.

*A special thanks to all the supportive and knowledgeable local individuals,
The Worshipful Company of Turners and Axminster Tools for progress so far.*

Please RSVP by 5/9/22 to
Wendy & Duncan Gray
office.rfcountryways@gmail.com
[Tel: 07506 841692](tel:07506841692)



www.roadfarmcountryways.com

Poetry Corner

Down in the west where the sun sinks to rest

The welcome is great
The oft heard word, mate
Pasties and pies are a way of life
Holiday glitter fayre shops which entice the wife
Fishing trips safe sailed out on the briny
In the sun's rays where the sea is so shiny
When the blue sky and the blue blue sea
Meet in the distance at eye's faraway see
Hurtful talk of the looming ' leci' crisis
Eased by the licky cone shaped ices
Happy shrieks from the folk on the beach
With bucket and spade brigade
Making sand castles so easy to teach
Crabbing and swimming in the heat of the day
Lets hope it will last for the scope of the stay
Beach donkey's slow pace
They're not in a race
But fun on their back
Along their sand track
Then evening's cool
Making one drool
For a sought after brew
West Country's BEST to please the crew
The joy of all this?
Continued sunshine to keep up the bliss

martin sexton August 2022