



# WOODBITS

## NEWSLETTER

### Issue 209

### October 2023

### Welcome

## SHAVINGS FROM THE CHAIRMAN

This month I was fortunate to attend the Turners Company Woodturning Connect competition. The exhibition was very well attended (1400 visitors in one day!) including several members from our club, both in the audience and as exhibitors. You'll see more about this later in this edition as Harvey, who also attended picked out a few special turned projects for our interest.

The eagle eyed amongst you all will notice that this month's demonstrator is not our own Phil Scoltock, but has been changed to Kate Kitchen. You will be pleased to hear that the circumstances are in no way sinister, but quite the opposite. Phil is moving to the sunnier south of England, and therefore is unable to deliver the demo. We wish him well with his move and thank him for all he has done for the club in the past few years.

The sale and Don guy's workshop contents has been completed and Allen has raised a good amount of money for Don's window, over £1100 The remaining small tools and effects have been passed to the sales table, so your generosity at the November meeting will be appreciated. For the last couple of editions we have been running a listing of all the craft fairs which our members are attending. The list is very short this month, but I suspect several of our members are / will be attending Christmas Fairs. If you have forgotten to tell us about yours, please email Allen or Adam and will be happy to add your event to the list.

This will be our last demonstration meeting of the year, because the Christmas meeting is usually A social events. However, our club social meetings have been transformed recently by the inclusion of member led demonstrations, which we intend to continue. It would be good to hear from any club members who haven't yet led a mini demonstration at one of our meetings. If you think you could demonstrate a particular skill or technique at Christmas please get in touch.

That's all for now.

See you at the Christmas Club event.

Adam

## CONTENTS

SHAVINGS FROM THE CHAIRMAN .....	1
Club News .....	3
September Competition .....	3
Meetings Calendar 2023 .....	6
Raffle purchase Diary for 2023-24.....	6
Competition Subjects .....	6
New Logo.....	7
Sale of items from the workshop of Don Guy .....	7
Craft Fairs.....	7
NOTES ON 14th NOVEMBER RAFFLE PRIZES – Tim Pettigrew .....	8
Demonstration by Stewart Furini .....	9
Review by Tony Taylor, Photos by Tony Taylor and Andrew Street.....	9
From Tree to Bowl Part 1 – Harvey Alison.....	12
Projects .....	15
Siera Pen – Derek Telford.....	15
Lazy Susan Plate – Peter Clark.....	16
Library .....	21
For Sale and Wanted.....	21
Wood for sale 1 .....	21
Wood for sale 2.....	22
Poetry Corner.....	23

Chairman and Treasurer: Adam Blackie [treasurer@hertsandbedswoodturners.co.uk](mailto:treasurer@hertsandbedswoodturners.co.uk)

Club Secretary and Newsletter Editor: Allen Kaye [secretary@hertsandbedswoodturners.co.uk](mailto:secretary@hertsandbedswoodturners.co.uk)

# Club News

## September Competition

### Beginners



1<sup>st</sup> Alan Wiggington



2<sup>nd</sup> Stephen Hills

2<sup>nd</sup> Pete Pocock



Advanced



1<sup>st</sup> Derek Telford



2<sup>nd</sup> Peter Hoare



3<sup>rd</sup> = Harvey Alison



3<sup>rd</sup> = Phil Walters

Open



1<sup>st</sup> Alan Lewis

2<sup>nd</sup> Tony Taylor



3<sup>rd</sup> Peter Hoare

## Meetings Calendar 2023

### 2023

Nov. Kate Kitchen  
Dec. Club night

### Raffle purchase Diary for 2023-24

I am the raffle coordinator for the forthcoming year. Many thanks to those people who responded to my last request.

If you think you can help for future months, then please contact me. Each month I give £60 to buy about 5 prizes which are then raffled off at a meeting. There is some flexibility as it is offered as a guide. Full receipts are required for each spend made.

If you need to discuss any of this information with me feel free to do so

Steve Beadle  
Herts and Beds Raffle Coordinator Tel 07720 677456

### Competition Subjects

#### 2023 Beginners

Nov Plate  
Dec Christmas tree

#### 2024

Jan 20 to 30cm Long Spurtle  
Feb 12 to 15cm Dia. Bowl  
Mar Ring Finger  
Apr Egg Cup  
May Dibber  
Jun Candle Holder  
Jul Plate or Platter  
Aug Any Style of Rolling Pin  
Sep An Apple or Pear  
Oct Paper Weight  
Nov Bud Vase  
Dec Xmas tree decoration

#### Advanced

Natural edge bowl  
Puzzle or game  
Natural Edged Bowl  
Wool Bowl  
Something Offset  
Egg Shaped Box  
Goblet With One or More Rings  
Lidded Box  
Something Stained or Painted  
Bowl on Feet  
Hollow Form  
Two or More Woods  
Pen/Pencil/Brush Holder  
Pair Candle Holders

## New Logo

The club logo is now being used in a variety of formats in addition to print and it now has to work in colour as well as black and white - also now for a variety of electronic formats - for the website, different phones, laptops, tablets etc. Andrew Street is leading a review of the logo and is asking for help.

If you have an interest in logo design or would be happy to give him feedback as to new images please contact him.

## Sale of items from the workshop of Don Guy

The sale is now virtually complete. Thank you to all those members who contributed. The final total of money collected for Don's widow Sylvia and family is now over £1100. Sylvia will be donating some of that money to the club.

Allen

## Craft Fairs.

Many of our members attend Craft Fairs. It can be hard work and is rewarding, both financially and good fun.

This list is for your diaries and calendars. If you are attending, please make sure you visit a fellow members stall.

If you are attending an event this year, please let us know and we will add it to the list.

Contact – [Chairman@Hertsandbedswoodturners.co.uk](mailto:Chairman@Hertsandbedswoodturners.co.uk)

Date (s)	Event	Link	Club Member
7 Oct – 23 Dec	Oxford Craft Guild, 82 Derngate, Northampton,	<a href="https://www.ocg.co.uk/">https://www.ocg.co.uk/</a>	Graham Lester
3 - 4 November	Craft Fair Amersham Art Unlocked, Jubilee Hall Amersham	<a href="https://2aoh-scouts.org.uk/finding-our-scout-hut/">https://2aoh-scouts.org.uk/finding-our-scout-hut/</a>	Graham Lester

# NOTES ON 14th NOVEMBER RAFFLE PRIZES – Tim Pettigrew

**½” Ashley Iles Bead Forming Tool** Create ½” (12.7 mm) beads with ease using this tool. Suitable for use when either spindle or faceplate turning



**Turning Decorative Bowls by RPT Richard Findley.** This Book is hot off the press, published in September this year! Turning Decorative Bowls presents 16 inspiring woodturning projects incorporating innovative decorative techniques and created by one of the UK's leading turners. Richard Findley shows the reader how to master new and innovative bowl turning techniques, sharing how he tackled each challenge from start to finish.



**Herts & Beds Woodturners Mug.** Celebrate being a member of your wood turning club with this customised unique ceramic mug.

**Light Pull Drive (Morse Taper 2)** The Light Pull drive is a friction drive with steps 3mm, 6mm, 10mm and 16mm. Designed to help turning light pulls and similar small items with a through hole. Simply slip the blank onto the drive, bring up the tailstock with a revolving centre for support and away you go.



## Proops Inside Outside Plastic Callipers

200mm, Metric Measuring Scale. Used for accurately checking the wall thickness of bowls or hollow forms. Includes a scale to display thickness in millimetres.



## Exotic spindle & bowl blanks

Provenance (of both blanks). Catapu (forestry concession belonging to TCT Dalmann), Sofala Province, central Mozambique, South Africa. Spindle blank (50mm x 50mm x 305mm) of *Xylia Xylia torreana*, known locally as N'cala and regionally in English as Sand Ash.



Tools need to be sharp and it sands to a fine finish. Bowl blank (200mm x 200mm x 50mm) of Wild Mango *Cordia africana*, also known and marketed using its Sena (local language) name, Mutondo, predominately found in central Mozambique. It sands and takes varnish and oils well.



# Demonstration by Stewart Furini

Review by Tony Taylor, Photos by Tony Taylor and Andrew Street



Woodturning started as a hobby during Stewart's career in teaching English, but it progressed into a full-time occupation since his recent retirement. He has become well known for his many excellent Youtube videos and his busy demonstrating schedule.

His particular interest has been in making decorated bowls and platters using a wide variety of colouring techniques, a number of which he demonstrated to us. Stewart started with an 8 x 2 inch Beech blank, mounted on a screw chuck. Using a 3/8 bowl gouge he cleaned up the surface with a pull cut and sanded to 240 grit.

This then became the surface to be successively decorated then cleaned off to show various techniques. First, he explained the use of the airbrush, what type to buy and how to clean. He preferred the siphon type, because he could have a series of reservoir bottles ready loaded with different colours.



With the gravity-fed type the cup holds only a small amount and has to be cleaned between colours. Stewart showed how thin lines could be drawn at short distances and more general effects further away. Incidentally, it is wise to have good ventilation and to use a vapour filter mask. Very interesting effects could be produced quite quickly using various stencils, with positive and negative masking.

Drying of spirit stains is quite rapid, but can be speeded up between coats with a hair dryer. Once a desired effect has been achieved, it should be left overnight, sprayed with acrylic sanding sealer and finally with lacquer, either gloss or satin. The next piece was a smaller blank, again mounted on a screw chuck.

This time Stewart went through the process of turning the bottom, making a chucking recess, forming a gentle Ogee shape and sanding to 240 grit followed by Chestnut Cut'n'Polish and ending with white Nyweb pad (which is non- abrasive). A final application of wax leaves a fine surface, which is more easily cleaned later if it gets accidentally paint-marked.



The upper surface was then decorated with acrylic paints spread by centrifugal force by applying paint then spinning till a suitable effect was achieved. A protective box was placed to catch any paint that should fly off.



For a third subject Stewart returned to an 8 inch blank, which was prepared as before, but this time sprayed with several coats of ebonizing lacquer to get an even black surface. Jo Sonja acrylic paints were thinned with flow medium then applied with kitchen paper, either folded to a straight edge, or rolled and presented end on. It was remarkable how dark colours which could scarcely be seen applied on the black background, were activated by application of white stain.



The final demonstration was of the use of the Proxon angle grinder to make textured surfaces. Two types of blade were shown – the Rotarex saw blade and the Manpa carbide cup cutter. The textured surface could then be painted with iridescent colours and black contrast wiped over.

Stewart got through an amazing range techniques in the time available and no doubt will have inspired some of the very appreciative audience to try some adventures in decorating.

Tony Taylor

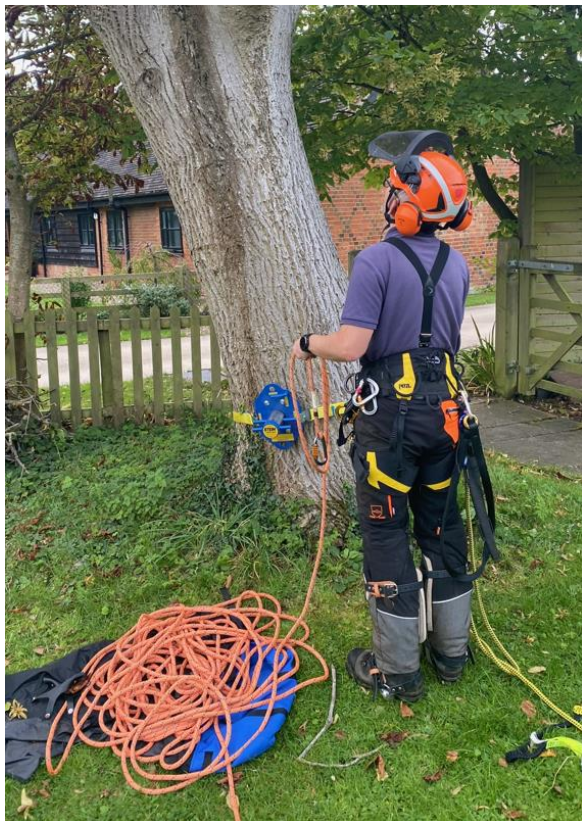
# From Tree to Bowl Part 1 – Harvey Alison

The tree was dying, and had put forth no leaves this year, although we do not know the cause. We had thought it might be rotting inside, but as you can see, the trunk was sound, although the brush and upper branches were very brittle and shedding.

The circumference of the tree was about 70", with no branches below 10', so using the circumference estimation method the age is approximately  $70/3.14 \times 4.5 \approx 100$  (4.5 is the growth factor for walnut)

We decided to climb the tree and limb it on one side, so that we remove mass where we don't want it and it would fall accurately in the direction we needed it to, plus it reduces the risk of damage to fencing, garden beds etc in the near vicinity. We only removed the minimum via aerial work, as it takes longer to climb, saw and hoist branches down than working on the ground after felling. More aerial work also increases the risk, especially to the climber.

On this occasion we used a new echo electric saw for the aerial work, which is both light, powerful and quiet <https://www.chainsawbars.co.uk/product-category/echo/>



Safety equipment included a climbing harness, ropes, carabinas, helmets all round, plus kevlar trousers for saw operators, gloves, ear defenders etc. For key safety information on climbing for forestry work, training courses are obviously needed, plus we recommend this book: <https://amzn.eu/d/41wnjZb>

There were 4 of us in the work party, and at least one of us should be able to climb the tree to come to the aid of the climber should he run into difficulties. Fatigue is also a factor, as we did the whole job on a single warm day. Regular breaks and a good lunch, including home made scotch eggs helped!



When we felled the tree, an accurate hinge was cut so that it fell in the right direction, and we laid some branches in line to cushion the impact and minimise the impact on the homeowners garden.

The last cut was to neatly level the stump, which could be left or ground out later.

Some of the branch wood, particularly the larger crotches, will be green turned for twice turned bowls by myself over the coming weeks.

Two large trunk sections have been kept as long as possible, and were transferred to my meadow (see photos below) where they will be processed into slabs and boards in a while using our Alaskan milling system. These will be seasoned on sticks under cover until equalised after which they can be used for turning, furniture making etc. I have promised the farmer, homeowners and various helpers some locally sourced walnut bowls in due season!





The farmer and homeowner are pleased that the timber will not all become firewood, which was the only option offered by local tree surgeons, and will go on to have a useful second life in beautiful turned objects.

In next months wood bits, Harvey will explain the next stages in this work.



# Projects

## Siera Pen – Derek Telford

*First in the advanced section last month was this pen by Derek Telford. Many people including myself have bought the simpler 7mm streamline pen kits but it is interesting to see one that used a more expensive **Sierra** kit. Derek described how it was made below: Allen*



Using the Siera pen kit, I glued two small off-cuts (bought from the sale table at the club), separating them with a Harewood veneer.

As for finish it was x3 coats low viscosity ca glue followed by around x8 coats of medium viscosity ca, through the nine grades of micro-mesh pads and then using T-cut to a final coat of Hampshire Sheen High gloss micro-crystalline and then buffing.

This kit does need an additional bushing on the mandrel because the diameter of the tube is wider than the standard 7mm. It is available from Prokraft currently as a special offer at £6.50. This style of pen can also be found elsewhere.

[Limited Edition Pen Kit 2 - prokraft](#)

Derek

## Lazy Susan Plate – Peter Clark

I wanted to make a Lazy Susan plate. As I began to think about this I began to wonder whether it was necessary to use a purchased Lazy Susan bearing, and whether it could be re-imagined differently using glass marbles. These would be visible as part of the design, rather than hidden away in the centre of the plate.

I ordered a couple of 10 inch sapele blanks from G&S Timber (<https://www.toolsandtimber.co.uk/>), a bag of marbles from Amazon, and started drawing a diagram of how a cross section through it might work.

The marbles would need to run in a groove shared between both the upper and the lower parts. I mounted one of the blanks on a faceplate and started turning. Having got the thing circular (the easy bit!) I now needed to consider again exactly where the groove would go. I wanted the marbles as close to the outside as possible for two reasons.

I wanted the best visibility for the design, and also the best stability for the plate as it was rotating. Initially, my thought was to use a round nose scraper to shape the groove. After all, marbles are spherical, so this seemed to make sense.

I also didn't know how many marbles would be needed to fill the track. Would it fill completely or would there be a gap of a fraction of a marble left? If that happened, would I need to start again with the track cut a little closer to the centre? My basic schoolboy arithmetic was not up to calculating this! Whilst considering all this I managed to forget where I had put the bag of marbles, causing the inevitable family comment that "Dad has actually lost his marbles".

I cut my first groove in the face of the blank, to a depth of what I estimated to be approximately one third of the diameter of a marble, and then took the faceplate off the chuck. I put it on the table and began filling the groove with marbles. Forty two, with a little spare! Forty two, as readers of *The Hitch Hikers Guide to the Galaxy* will know, is the answer to life, the universe and everything. I took this to be a good sign!

I then started to repeat the process with my second blank. Having completed this I excitedly placed it over the top of the marbles and tried a gentle rotation. I had, at this point, not installed any central pivot. Marbles began to escape from the groove, even on a slow and carefully managed rotation. I wondered if the shape of the groove might be the problem. Was the rounded shape a little too close to the marbles and not allowing enough "rattle room"?





I put the blanks back on the chuck and squared off the bottom of the groove to make a square channel for the marbles. This seemed to me to fix the problem, but I will never actually know if the round channel would have worked if I'd had a central pivot at that stage.

It was about this point that I had the idea to illuminate the marbles from the inside with a string of LED lights. The one I used, also from Amazon, has a cork shaped battery holder. This needed an appropriately shaped recess to be chiselled out of the bottom of the base to accommodate it, with a small hole drilled right through the base to feed the cable through. One metre of light string may be a bit excessive. The wire was hot melt glued in a spiral around the upper face of the base, keeping it all inside of the marble channel.

The battery holder was also hot melt glued into the recess in the base, taking care to keep the battery access door to the bottom!

The pivot I fitted was cut from a very carefully measured length of 20mm round steel bar, drilled and tapped for an M10 bolt. The length needed to be precise to allow sufficient to epoxy into the top, and just enough to allow space for a penny washer and a bit of freedom for it to turn without marbles escaping!

The project was completed with the addition of three small wooden feet to allow clearance for the bolt head above the table.

I had hoped to be able to show some pictures of the internals but cannot now undo the M10 bolt from the steel bar without risking breaking the epoxy joint holding the bar to the underside of the top.

Altogether a challenging but very enjoyable project

Derek Telford

## Woodturning Connect 2023 – Report by Harvey Alison

Many club members had the pleasure of attending the Worshipful Company of Turners 'Woodturning Connect 2023' exhibition at the Pewterers Hall in London this month.



Winner of the 'Masters' competition people's choice award, Carlyn Lindsay, who has demonstrated at the club before: [carlynlindsay.co.uk](http://carlynlindsay.co.uk)



A superb piece by our friend Stuart Mortimer – alongside Gary Rance the only turner to have attended every Worshipful Company event since the inception of Wizardry in Wood!

There were several competitions covering ornamental, pole, and other types of turning. Chief judge of the 'masters' competition was our very own club professional, Gary Rance.

A special mention goes to Tony Taylor, who exhibited several pieces in the advanced competition, and successfully sold his work to visitors to the exhibition. Well done Tony!

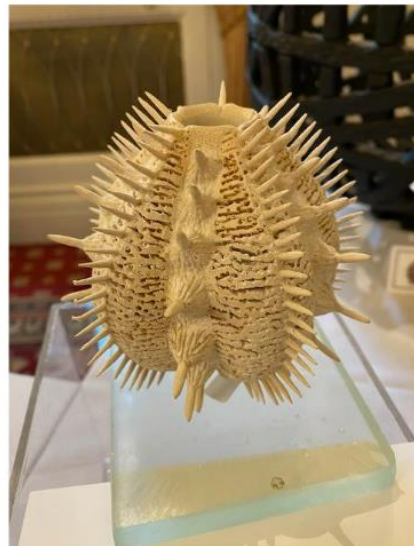
The event was very well attended, with queues out of the door at some points in the day, despite the inclement weather. A few images from the day are shown here for club mates unable to attend on this occasion. More are available on the club private FaceBook page. Hopefully we will see you at the next Worshipful Company event, Wizardry in Wood 2025, which I will certainly be attending for inspiration and to catch up with friends in the woodturning community.

<https://turnersco.com/woodturning-connect-2023-biennial-exhibition-and-competitions/>



Margaret Garrards winning entry for the Advanced competition  
<https://www.margaretgarrard.co.uk/>

Four more striking entries





My personal favourite , an ermine themed seed pod design by wood artist Louise Hibbert.



# Library

The full library list and the associated rules can be seen via our website -

<https://hertsandbedswoodturners.co.uk/>

## Tool Library Contact

Adam Blackie

07941 270640

[treasurer@hertsandbedswoodturners.co.uk](mailto:treasurer@hertsandbedswoodturners.co.uk)

-----ooooO000Ooooo-----

# For Sale and Wanted

## Wood for sale 1

As noted last month, we were contacted through the website by Geoff Harris – he is a fellow woodturner and has a large stock of hardwood he wants to sell. The wood includes oak, ash, rose woods, sapeles, boxwood, walnut, pear and more, well dried and suitable for turning.

He still has wood for sale and is based Between Royston and Cambridge and contact numbers are 01223208850 or 07971544517



-----ooooO0000000-----

## Wood for sale 2

I was contacted by Ian Lamb in Chesham who has recently felled a walnut tree which has been cut into discs, longer trunk sections (2 feet) and some round log-length pieces (photos attached)

No prices quoted but if you are interested please contact him on [mrlamineepie@protonmail.com](mailto:mrlamineepie@protonmail.com)



-----ooooOOOO0000-----

# Poetry Corner

## **THE RYDER CUP**

This weekend was no bereavement,  
A sporting pinnacle of golfing achievement  
In the shadow of Ancient Rome  
The European team brought it home  
Our golfing gladiators triumphed once more  
Overcame the threat arrived on that shore  
Different weapons used, clubs, swing, sweat and grit un nerved  
Brought the victory so much deserved  
But the spectator's reception some might say  
Did no justice to BOTH team's play  
Got in perspective USA 597 mill, Europe 748 mill, sheer numbers to find players  
The skilful, confidant and above all, stayers  
All were thrilled by such imposing endeavour  
May the competition's spirit continue for ever

Martin Sexton Sunday 1st October 2023