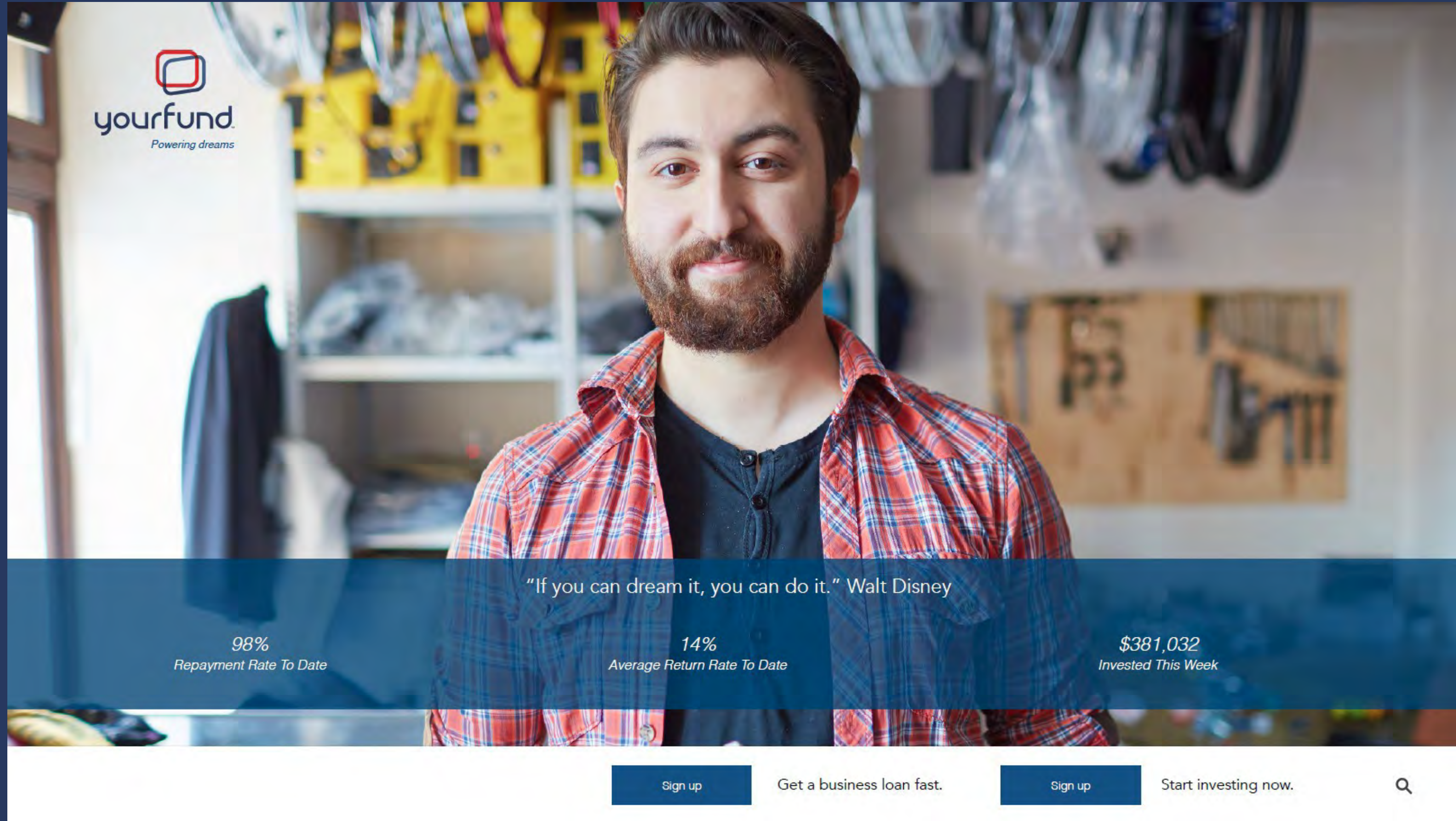


# Lending Platform - Home Page



The hero section features a background image of a smiling man with a beard in a workshop. The Yourfund logo is in the top left. A quote by Walt Disney is centered. Three statistics are displayed: 98% Repayment Rate To Date, 14% Average Return Rate To Date, and \$381,032 Invested This Week. The bottom navigation bar includes two 'Sign up' buttons, the text 'Get a business loan fast.' and 'Start investing now.', and a search icon.

**yourfund**  
Powering dreams

"If you can dream it, you can do it." Walt Disney

98%  
Repayment Rate To Date

14%  
Average Return Rate To Date

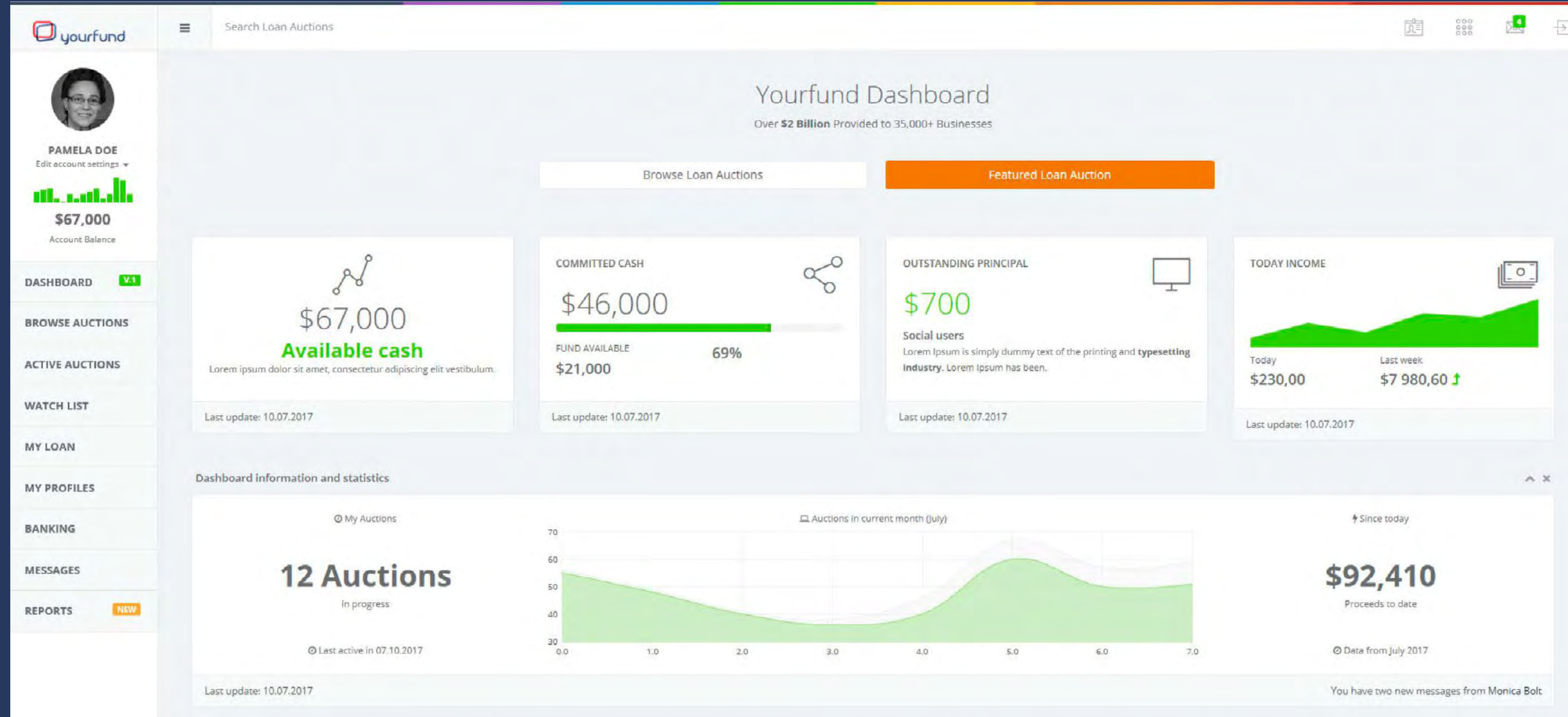
\$381,032  
Invested This Week

Sign up   Get a business loan fast.   Sign up   Start investing now.   🔍



This document is private and confidential and to be used for discussions only. Not for investment purposes. Do not copy.

# Lending Platform - Investor Dashboard



This document is private and confidential and to be used for discussions only. Not for investment purposes. Do not copy.

# Lending Platform - Browse Auctions

**yourfund** Search Loan Auctions

**PAMELA DOE**  
Edit account settings  
\$67,000  
Account Balance

**Loan Auctions**  
List of Loan Auctions. Dashboard / Auction / List

**Shake Shop Westwood** Funded

Our Customers say, "The best burger around, hands down. Staff were friendly and service was quick. You may have to wait for a table because of how busy they are regularly, but the food itself makes the trip worth it!"

100% Funded  
\$25,000

LOAN TERM	INTEREST	BIDS
12 months	9%	35

Watch Detail Bid

Time left : 0d 0h 0m 26s Auction closes: Aug 30, 2017, 8:38:54 PM

**Atwater Antiques**

We want to grow our inventory. Our antique mall is big, which is always a plus. We have a large selection of items, including new and old items. There are many other vintage stores nearby.

32% Funded  
\$3,600

LOAN TERM	INTEREST	BIDS
6 months	10%	8

Watch Detail Bid

Time left : 4d 14h 26m 53s Auction closes: Sep 4, 2017, 11:05:21 AM

**Sugar Fish** NEW

With multiple locations in Los Angeles, Sugar Fish is a different kind of sushi dining experience. Our restaurants serve only traditional sushi of the highest quality based on Chef Nozawa style of sushi. Our passion is to carry forward his great tradition and style of food which many believe is the best sushi there is. We need funds to expand locations.

77% Funded  
\$24,500

LOAN TERM	INTEREST	BIDS
8 months	9%	12

Watch Detail Bid

Time left : 6d 4h 8m 43s Auction closes: Sep 6, 2017, 12:47:10 AM

**Santa Monica Apparel**

Santa Monica is a shopping destination because of the atmosphere and offerings of its neighborhoods - to people-watch, see what's new, to find inspiration from the local style and the ease of walking between shops and destinations. We want to expand to take advantage of our excellent location.

2% Funded  
\$4,560

LOAN TERM	INTEREST	BIDS
6 months	10%	2

Watch Detail Bid

Time left : 12d 18h 53m 26s Auction closes: Sep 12, 2017, 3:31:54 PM



This document is private and confidential and to be used for discussions only. Not for investment purposes. Do not copy.

# Lending Platform - Merchant Dashboard

**yourfund** Search Loan Auctions

**JOHN SMITH**  
Edit account settings

**\$18,231.96**  
Account Balance

**DASHBOARD** V.1

MY AUCTION

MY ACCOUNT

REPORTS

MESSAGES

---

**TODAY**  
AUTHORIZATIONS

#	Statut	Amount
4,864	Approved	\$142,643.23
39	Declined	\$1,265.70

Update today at 2:23 pm

**MONTH-TO-DATE**  
CREDIT CARD SALES

#	Statut	Amount
24,221	Approved	\$1,214,625.00
212	Declined	\$12,454.00

Update today at 2:23 pm

**BANK DEPOSITS**  
CREDIT CARD SALES

Date	Amount
Today	\$2,785.00
Yesterday	\$3,848.00
This Month	\$47,224.00

Update today at 2:23 pm

**LOAN BALANCE**  
Beginning on April 24, 2017

Payments	Amount
Yesterday	\$848.20
This month	\$38,548.00

Loan Balance : **\$55,224.00**

Update today at 2:23 pm

---

**ALL INCOME**  
Net total of all credit card sales to date.

Period	Amount
This Year	\$942,643.23
Last Year	\$1,265,500.70

**PENDING**  
BATCHS

#	Amount
2	\$4,625.00

**SETTLED**  
BATCHS

#	Amount
1	\$785.00

**CHARGEBACK**  
ACTIVE

#	Amount
5	\$848.20



This document is private and confidential and to be used for discussions only. Not for investment purposes. Do not copy.

# Lending Platform - Auction Detail

The screenshot displays the 'Sugar Fish' auction detail page on the YourFund platform. The page is divided into several sections:

- Auction detail:** A summary of the loan terms and funding progress. The goal is \$35,000, with a minimum requirement of \$25,000. The loan term is 8 months at an interest rate of 9%. The current amount bid is \$17,300, with 7 bids and 50% of the goal funded. The bid range is 8% - 21%.
- About Sugar Fish:** A section titled 'Our Story' and 'Use of Proceeds'. 'Our Story' describes the restaurant's focus on traditional sushi. 'Use of Proceeds' details the lease for a new location in New York City.
- Documents:** A section for 'View Documents' with icons for Info, Activity, Report, and Bank, and an 'Upload Documents' button.
- Images:** A gallery of four photos showing the restaurant's interior and exterior.
- Map:** A map showing the location of the restaurant in Hollywood, California, near Sunset Blvd and Fountain Ave.

Additional information includes: Industry: Restaurant, Organisation Type: LLC, Use: Inventory, Credit Rating: 888, Monthly Sale: \$45,000, Yrs Owned: 9, Monthly CC Sale: \$37,000, and # Employees: 12. A progress bar indicates 50% funding, and a note states: 'This project will only be funded if it reaches its goal by Fri, July 28 2017 8:59 PM PDT.' Buttons for 'BID HISTORY' and 'QUICK CLOSE' are also visible.