

# BLISS SCHOOL DISTRICT FACILITY IMPROVEMENTS

601 US-30 BLISS, IDAHO

## SYMBOLS

BUILDING SECTION	
DETAIL	
ELEVATION MARK	
REVISIONS	
WINDOW TYPES	
WALL ASSEMBLIES	
FLOOR, CEILING & ROOF ASSEMBLIES	
DOOR NUMBER	
EXTERIOR ELEVATION	
INTERIOR ELEVATION	

## MATERIAL KEY

	EARTH		CONTINUOUS WOOD
	CMU		INSULATION
	CONCRETE		TAPERED INSULATION
	STEEL CONTINUOUS		RIGID INSULATION
	PLYWOOD		CRUSHED GRAVEL
	FINISH WOOD		SAND
	WOOD BLOCKING		

## ARCHITECTURAL ABBREVIATIONS

A.F.F.	ABOVE FINISHED FLOOR	MFR	MANUFACTURER
ALT.	ALTERNATE	M.O.	MASONRY OWNER INSTALLED
L	ANGLE	MAX.	MAXIMUM
BRG	BEARING	MIN.	MINIMUM
B.M.	BENCH MARK	NTS	NOT TO SCALE
B.O.	BOTTOM OF	O.C.	ON CENTER
B.LDG.	BUILDING	OPNG.	OPENING
CLC.	CEILING	OPP.	OPPOSITE
CL	CENTER LINE	O.H.	OPPOSITE HAND
C	CHANNEL	O.D.	OUTSIDE DIAMETER
C.O.	CLEAN OUT	O.F.C.I.	OWNER FURNISHED CONTRACTOR INSTALLED
C.O.L.	COLUMN	O.F.O.I.	OWNER FURNISHED OWNER INSTALLED
CMU	CONCRETE MASONRY UNIT	O.T.S.	OPEN TO STRUCTURE
CONT.	CONTINUOUS	O.T.A.	OPEN TO ABOVE
DA.	DIAMETER	PENNY	PENNY
D.F.	DRINKING FOUNTAIN	PL	PLATE
EA.	EACH	R	RADIUS
ELEC.	ELECTRICAL	REF.	REFERENCE
ELEV.	ELEVATION	REV.	REVISION
EQ.	EQUAL OR EQUIVALENT	R.O.	ROUGH OPENING
F.O.F.	FACE OF FINISH	SCHED.	SCHEDULE
FIN.	FINISH	SIM.	SIMILAR
F.F.	FINISHED FLOOR	SQ.	SQUARE
FLR.	FLOOR	STD.	STANDARD
FTG.	FOOTING	T.O.	TOP OF
FND.	FOUNDATION	T.G.	TOP OF GRADE
GR.	GRADE	T.W.	TRANSOM WINDOW
HT.	HEIGHT	TR.	TYPICAL
HORIZ.	HORIZONTAL	U.N.C.	UNLESS NOTED OTHERWISE
I.D.	INSIDE DIAMETER	W.C.	WATER CLOSET



CAMPUS PLAN

## VICINITY MAP



BLISS, IDAHO  
N.T.S

## PROJECT TEAM

**ARCHITECTURAL**  
DESIGN WEST ARCHITECTS, P.A.  
216 SW 5TH AVENUE, SUITE 100  
MERIDIAN, IDAHO 83642  
TEL: (208) 888-1768

**CONTACT:**  
BRANDON WEHOLT  
bweholt@designwestid.com

## DRAWING INDEX

### GENERAL

A1.00 COVER SHEET

### ARCHITECTURAL

A3.30 FLOOR PLANS & ELEVATIONS  
A6.00 DOOR & WINDOW TYPES

## BID SCOPE

**BID PACKAGE 1:**  
REPLACEMENT OF WINDOWS AT PRIMARY BUILDING INDICATED WITH NOTE 1 ON CAMPUS PLAN. REPLACEMENT OF HOLLOW METAL DOOR AND FRAME AT AG BUILDING INDICATED WITH NOTE 2 ON CAMPUS PLAN. CONTRACTORS BIDDING THIS PACKAGE SHALL FURNISH AND COORDINATE ALL WORK DEPICTED IN THESE DRAWINGS, EXCLUDING BID PACKAGE 2, AND NOTED IN SPECIFICATION DIVISIONS 02-06 TO PROVIDE A COMPLETE INSTALLATION, INCLUDING, BUT NOT LIMITED TO DEMOLITION AND DISPOSAL, CUTTING AND PATCHING, SEALING AND PAINTING.

**BID PACKAGE 2:**  
REPLACEMENT OF HVAC UNITS AT MODULAR CLASSROOM BUILDING. ADDITION OF HVAC AT KITCHEN AND TECH ROOM IN PRIMARY BUILDING INDICATED WITH NOTE 3 ON CAMPUS PLAN. INSTALLATION OF SMART THERMOSTATS IN ALL EDUCATION BUILDINGS ON CAMPUS INDICATED WITH NOTE 4 ON CAMPUS PLAN. CONTRACTORS BIDDING THIS PACKAGE SHALL FURNISH AND COORDINATE ALL WORK NOTED IN SPECIFICATION SECTION 23.01.00 TO PROVIDE A COMPLETE INSTALLATION, INCLUDING, BUT NOT LIMITED TO, DEMOLITION AND DISPOSAL, CUTTING AND PATCHING, AND ELECTRICAL WORK.

## BID ALTERNATES

**BID ALT #1 - NORTH UPPER LEVEL WINDOWS**  
REPLACE THE WINDOWS IN THE UPPER FLOOR OF THE SECONDARY SCHOOL BUILDING, NORTH ELEVATION AS IDENTIFIED IN THE CONTRACT DOCUMENTS. THIS BID ALTERNATE IS ASSOCIATED WITH BID PACKAGE 1.

**BID ALT #2 - EAST UPPER LEVEL WINDOWS**  
REPLACE THE WINDOWS IN THE UPPER FLOOR OF THE SECONDARY SCHOOL BUILDING, EAST ELEVATION AS IDENTIFIED IN THE CONTRACT DOCUMENTS. THIS BID ALTERNATE IS ASSOCIATED WITH BID PACKAGE 1.

**BID ALT #3 - WEST UPPER LEVEL WINDOWS**  
REPLACE THE WINDOWS IN THE UPPER FLOOR OF THE SECONDARY SCHOOL BUILDING, WEST ELEVATION AS IDENTIFIED IN THE CONTRACT DOCUMENTS. THIS BID ALTERNATE IS ASSOCIATED WITH BID PACKAGE 1.

**BID ALT #4 - SOUTH UPPER LEVEL WINDOWS**  
REPLACE THE WINDOWS IN THE UPPER FLOOR OF THE SECONDARY SCHOOL BUILDING, SOUTH ELEVATION AS IDENTIFIED IN THE CONTRACT DOCUMENTS. THIS BID ALTERNATE IS ASSOCIATED WITH BID PACKAGE 1.

**BID ALT #5 - WEIGHT ROOM HEATING / COOLING**  
INSTALL ONE (1) HEATING / COOLING DUCTLESS SPLIT HEAT PUMP SYSTEM IN THE WEIGHT ROOM OF THE GYMNASIUM BUILDING, AS IDENTIFIED IN THE CONTRACT DOCUMENTS. THIS BID ALTERNATE IS ASSOCIATED WITH BID PACKAGE 2.

## GENERAL NOTES

- COORDINATE MECHANICAL AND ELECTRICAL EQUIPMENT BLOCK-OUT LOCATIONS AND THRU-WALL PENETRATIONS. SEE MECHANICAL AND ELECTRICAL SHEETS.
- SHOULD MANUFACTURER'S INSTRUCTIONS CONFLICT WITH CONTRACT DOCUMENTS, REQUEST CLARIFICATION FROM ARCHITECT BEFORE PROCEEDING.
- ANY CONFLICTING PORTION OF THE CONTRACT DOCUMENTS SHALL BE BROUGHT TO THE ATTENTION OF THE ARCHITECT PRIOR TO CONSTRUCTION OF THAT PORTION.
- THE CONTRACTORS AGREE TO ASSUME SAFE AND COMPLETE RESPONSIBILITY FOR THE JOB SITE DURING THE COURSE OF THE PROJECT, INCLUDING THE SAFETY OF ALL PERSONS AND PROPERTY, THAT THIS REQUIREMENT SHALL APPLY CONTINUOUSLY AND NOT BE LIMITED TO NORMAL WORKING HOURS, AND THAT THE CONTRACTOR SHALL DEFEND, INDEMNIFY AND HOLD THE ARCHITECT AND OWNER HARMLESS FROM ANY AND ALL LIABILITY, REAL OR ALLEGED, IN CONNECTION WITH THE PERFORMANCE OF WORK ON THIS PROJECT, EXCEPT FOR LIABILITY ARISING FROM THE SOLE NEGLIGENCE OF THE OWNER OR ARCHITECT, OR THIRD PARTY IN VIOLATION OF THE LAW OR IN TRESPASS. THE CONTRACTOR SHALL PRACTICE SAFETY AT ALL TIMES AND SHALL FURNISH, ERECT, AND MAINTAIN SUCH FENCES, BARRICADES, LIGHTS, AND SIGNS NECESSARY TO GIVE ADEQUATE PROTECTION TO THE PUBLIC AT ALL TIMES. THE ARCHITECT MAKES NO WARRANTY THAT THE CONSTRUCTION-PHASE FENCES, ETC., ARE ADEQUATE TO ENSURE SAFETY DURING CONSTRUCTION OPERATIONS.
- CONTRACTORS SHALL VERIFY EXISTING CONDITIONS IN THE FIELD AS THEY PERTAIN TO THE WORK PRIOR TO THE SUBMISSION OF BIDS.

**DESIGN WEST ARCHITECTS, P.A.**  
MERIDIAN, IDAHO • PULLMAN, WASHINGTON  
KENNEWICK, WASHINGTON • GAITHERSBURG, MARYLAND  
SPokane, Washington  
www.designwestpa.com

**DRAWN BY**  
JR

**CHECKED BY**  
BW

**JOB NUMBER**  
26007

**REVISIONS**

## PROJECT TEAM

**ARCHITECTURAL**  
DESIGN WEST ARCHITECTS, P.A.  
216 SW 5TH AVENUE, SUITE 100  
MERIDIAN, IDAHO 83642  
TEL: (208) 888-1768

**CONTACT:**  
BRANDON WEHOLT  
bweholt@designwestid.com

## DRAWING INDEX

### GENERAL

A1.00 COVER SHEET

### ARCHITECTURAL

A3.30 FLOOR PLANS & ELEVATIONS  
A6.00 DOOR & WINDOW TYPES

## BID SCOPE

**BID PACKAGE 1:**  
REPLACEMENT OF WINDOWS AT PRIMARY BUILDING INDICATED WITH NOTE 1 ON CAMPUS PLAN. REPLACEMENT OF HOLLOW METAL DOOR AND FRAME AT AG BUILDING INDICATED WITH NOTE 2 ON CAMPUS PLAN. CONTRACTORS BIDDING THIS PACKAGE SHALL FURNISH AND COORDINATE ALL WORK DEPICTED IN THESE DRAWINGS, EXCLUDING BID PACKAGE 2, AND NOTED IN SPECIFICATION DIVISIONS 02-06 TO PROVIDE A COMPLETE INSTALLATION, INCLUDING, BUT NOT LIMITED TO DEMOLITION AND DISPOSAL, CUTTING AND PATCHING, SEALING AND PAINTING.

**BID PACKAGE 2:**  
REPLACEMENT OF HVAC UNITS AT MODULAR CLASSROOM BUILDING. ADDITION OF HVAC AT KITCHEN AND TECH ROOM IN PRIMARY BUILDING INDICATED WITH NOTE 3 ON CAMPUS PLAN. INSTALLATION OF SMART THERMOSTATS IN ALL EDUCATION BUILDINGS ON CAMPUS INDICATED WITH NOTE 4 ON CAMPUS PLAN. CONTRACTORS BIDDING THIS PACKAGE SHALL FURNISH AND COORDINATE ALL WORK NOTED IN SPECIFICATION SECTION 23.01.00 TO PROVIDE A COMPLETE INSTALLATION, INCLUDING, BUT NOT LIMITED TO, DEMOLITION AND DISPOSAL, CUTTING AND PATCHING, AND ELECTRICAL WORK.

## BID ALTERNATES

**BID ALT #1 - NORTH UPPER LEVEL WINDOWS**  
REPLACE THE WINDOWS IN THE UPPER FLOOR OF THE SECONDARY SCHOOL BUILDING, NORTH ELEVATION AS IDENTIFIED IN THE CONTRACT DOCUMENTS. THIS BID ALTERNATE IS ASSOCIATED WITH BID PACKAGE 1.

**BID ALT #2 - EAST UPPER LEVEL WINDOWS**  
REPLACE THE WINDOWS IN THE UPPER FLOOR OF THE SECONDARY SCHOOL BUILDING, EAST ELEVATION AS IDENTIFIED IN THE CONTRACT DOCUMENTS. THIS BID ALTERNATE IS ASSOCIATED WITH BID PACKAGE 1.

**BID ALT #3 - WEST UPPER LEVEL WINDOWS**  
REPLACE THE WINDOWS IN THE UPPER FLOOR OF THE SECONDARY SCHOOL BUILDING, WEST ELEVATION AS IDENTIFIED IN THE CONTRACT DOCUMENTS. THIS BID ALTERNATE IS ASSOCIATED WITH BID PACKAGE 1.

**BID ALT #4 - SOUTH UPPER LEVEL WINDOWS**  
REPLACE THE WINDOWS IN THE UPPER FLOOR OF THE SECONDARY SCHOOL BUILDING, SOUTH ELEVATION AS IDENTIFIED IN THE CONTRACT DOCUMENTS. THIS BID ALTERNATE IS ASSOCIATED WITH BID PACKAGE 1.

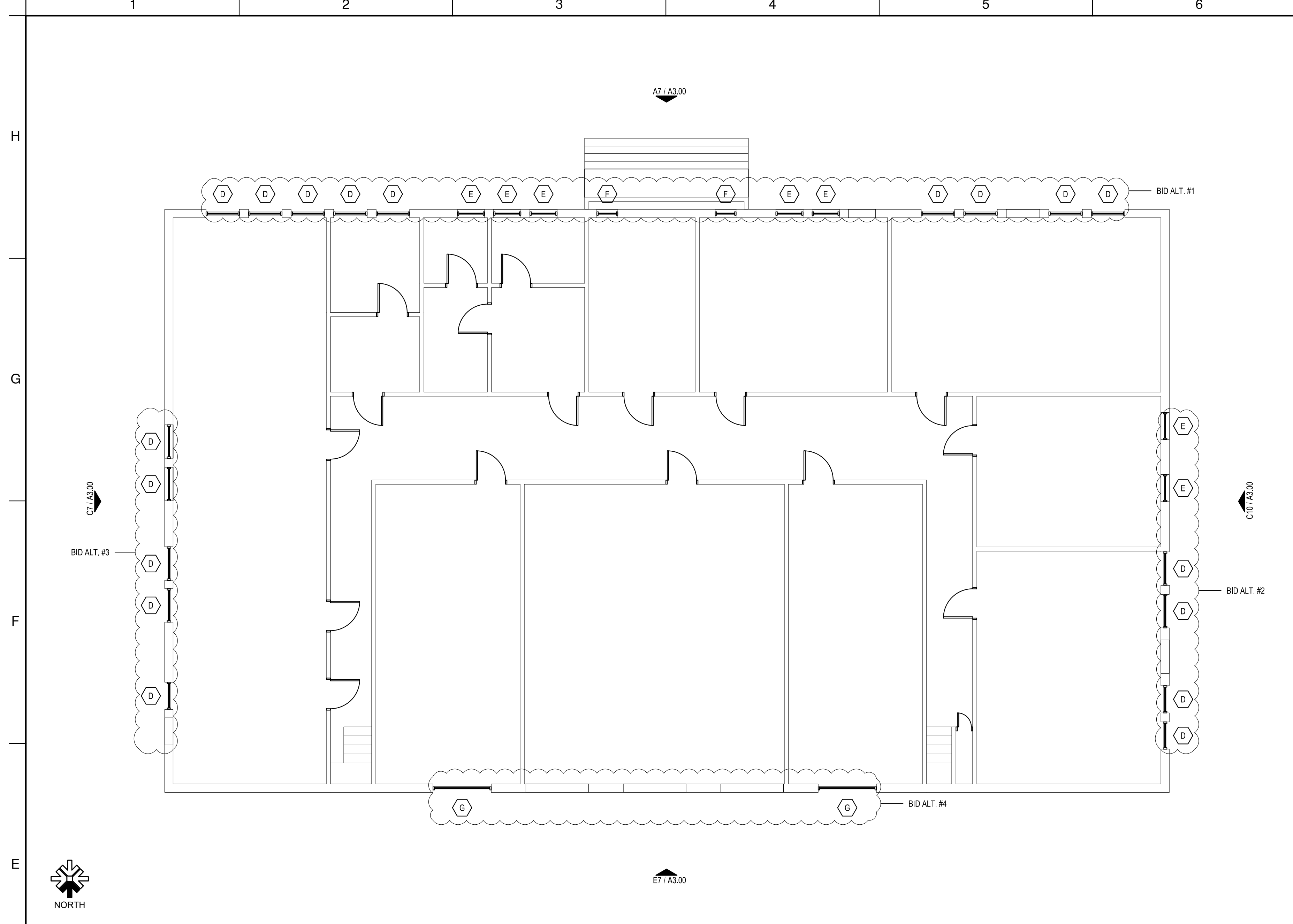
**BID ALT #5 - WEIGHT ROOM HEATING / COOLING**  
INSTALL ONE (1) HEATING / COOLING DUCTLESS SPLIT HEAT PUMP SYSTEM IN THE WEIGHT ROOM OF THE GYMNASIUM BUILDING, AS IDENTIFIED IN THE CONTRACT DOCUMENTS. THIS BID ALTERNATE IS ASSOCIATED WITH BID PACKAGE 2.

**BLISS SCHOOL DISTRICT  
FACILITY IMPROVEMENTS**  
601 US-30  
BLISS, IDAHO

**DATE**  
05/13/2026

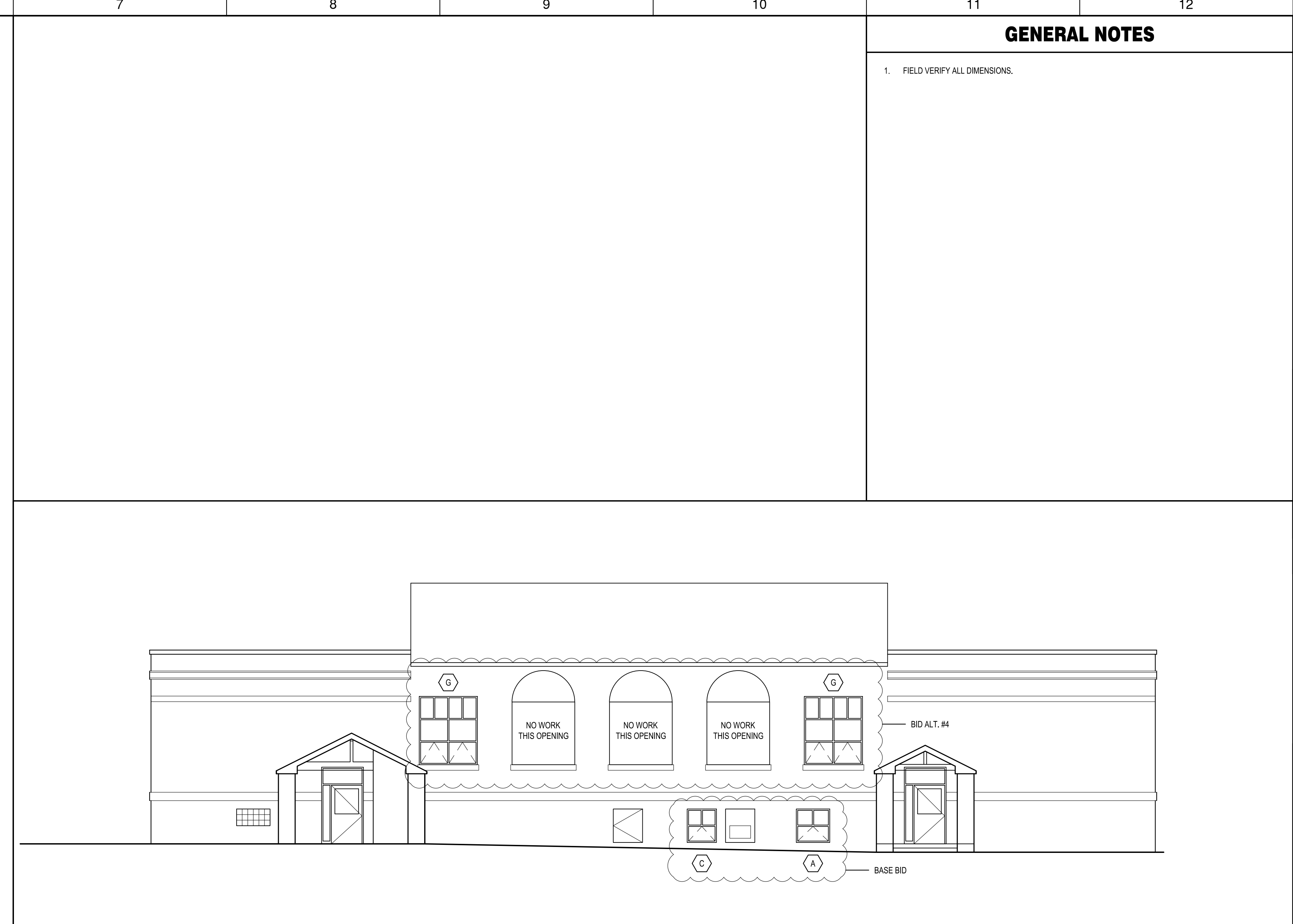
**SHEET NAME**  
**COVER SHEET**

**SHEET**  
**A1.00**



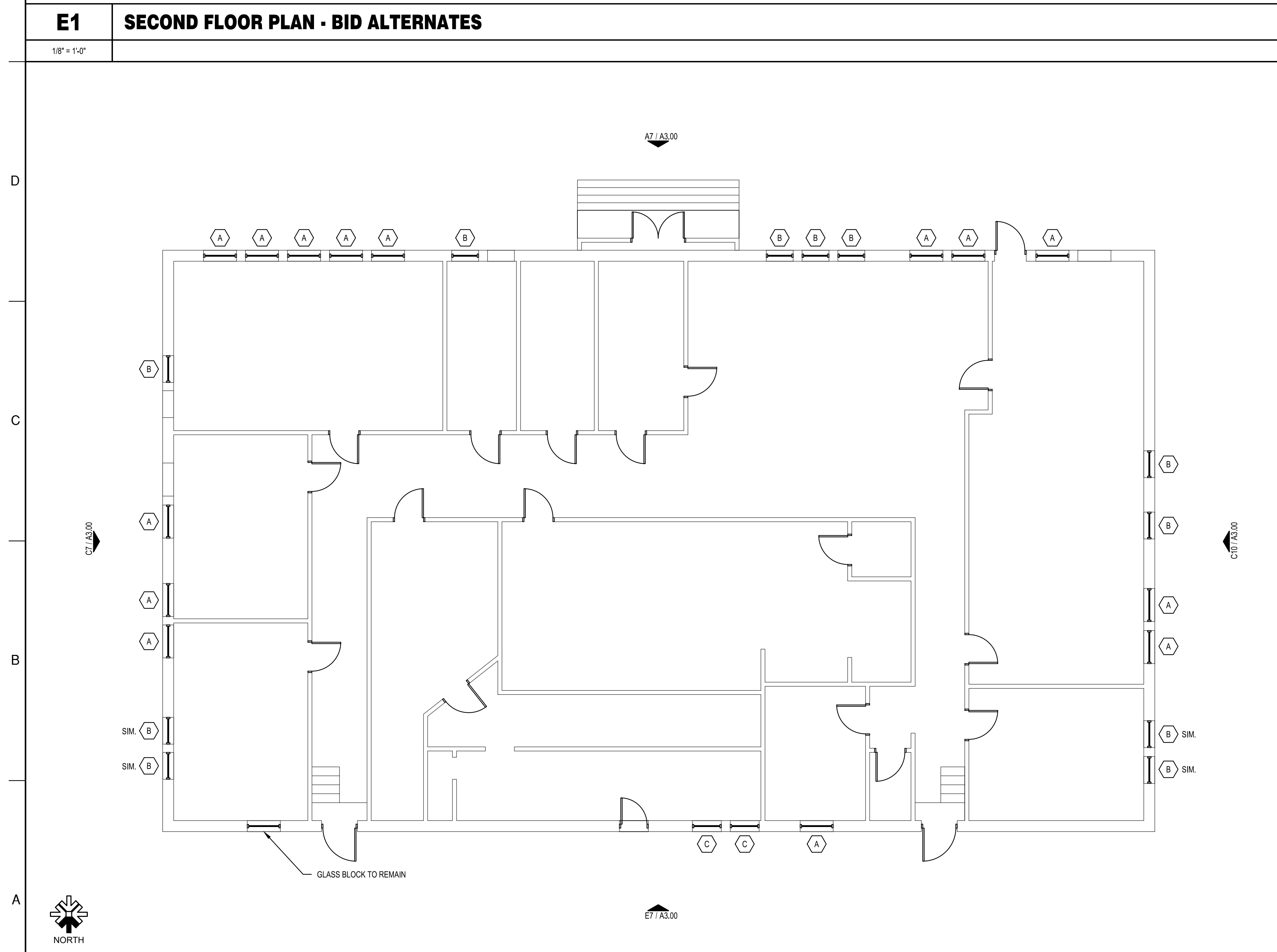
**E1 SECOND FLOOR PLAN - BID ALTERNATES**

1/8" = 1'-0"



**E7 SOUTH ELEVATION**

1/8" = 1'-0"



**A1 FIRST FLOOR PLAN - BASE BID**

1/8" = 1'-0"

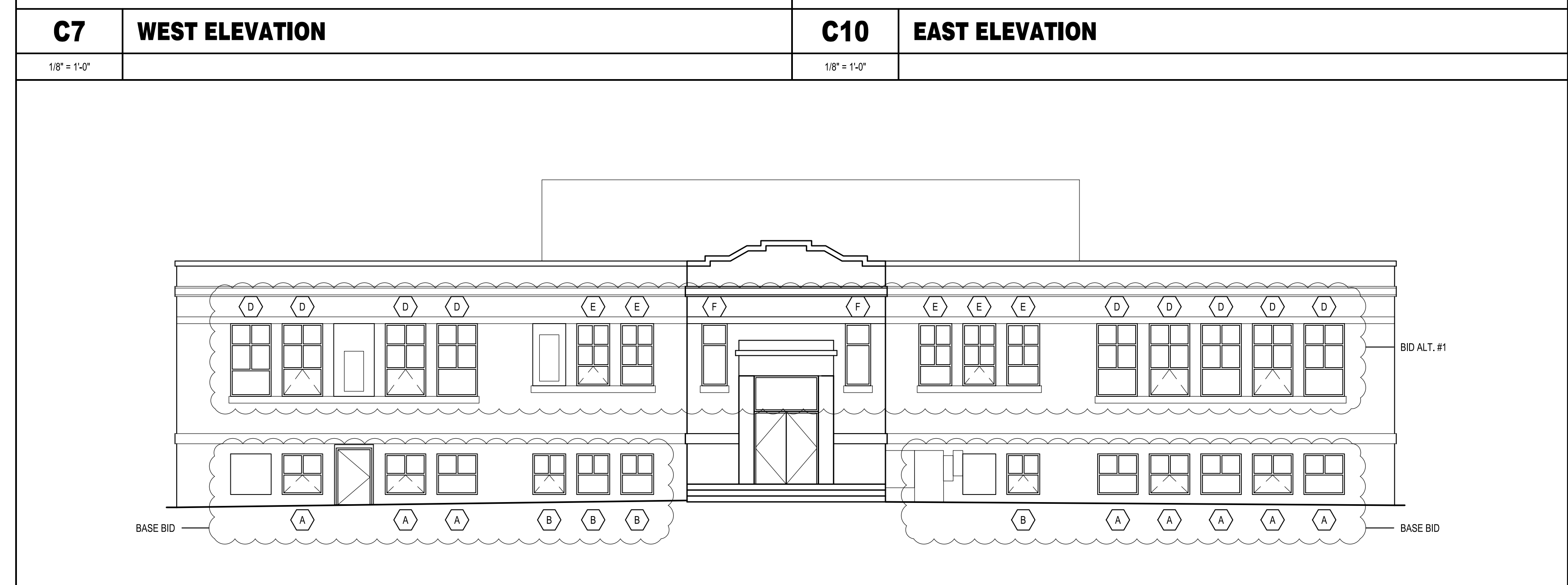


**C7 WEST ELEVATION**

1/8" = 1'-0"

**C10 EAST ELEVATION**

1/8" = 1'-0"



**A7 NORTH ELEVATION**

1/8" = 1'-0"

**GENERAL NOTES**

1. FIELD VERIFY ALL DIMENSIONS.

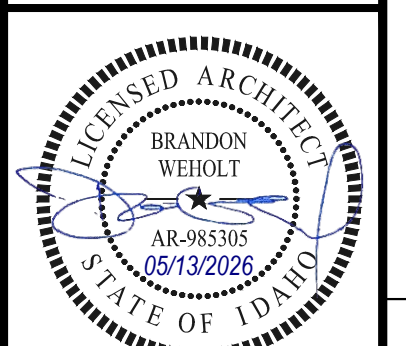
**DESIGN WEST**  
 ARCHITECTS, P.A.  
 MERIDIAN, IDAHO • PULLMAN, WASHINGTON  
 KENNEWICK, WASHINGTON • GAITHERSBURG, MARYLAND  
 SPokane, WASHINGTON  
 www.designwestpa.com

DRAWN BY  
JR

CHECKED BY  
BW

JOB NUMBER  
26007

REVISIONS



**BLISS SCHOOL DISTRICT**  
**FACILITY IMPROVEMENTS**  
 601 US-30  
 BLISS, IDAHO

DATE  
**05/13/2026**

SHEET NAME  
**FLOOR PLANS & ELEVATIONS**

SHEET  
**A3.00**

**DOOR SCHEDULE**

DOOR NO.	ROOM NAME	DOOR		LEAF		FRAME		RATING	HOLDING DEVICE	NOTES	
		#	HT	WD	HT	MTL	FIN				
100	VO-AG SHOP	1	7'-0"	3'-0"	7'-0"	01	HM	PA	EXIST.	EXIST.	SEE A1/A6.00

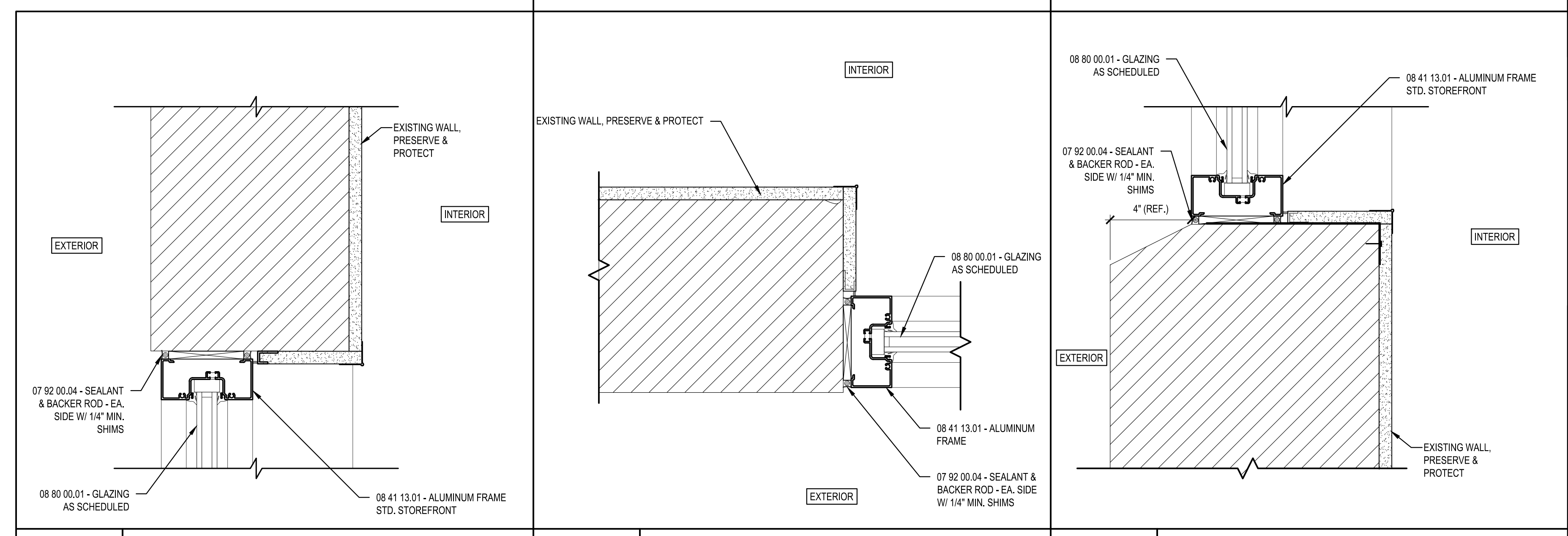
  

<b>STANDARD ABBREVIATIONS</b>	AL = Aluminum AN = Anodized FF = Factory Finish FW = Full Wood HM = Hollow Metal M = Metal MW = Narrow Glass Wood	OHC = Overhead Colling Door PA = Paint Acrylic PE = Paint Epoxy SG2 = Full Glass (2 Panes) Aluminum STI = Steel WD = Wood
-------------------------------	---	--

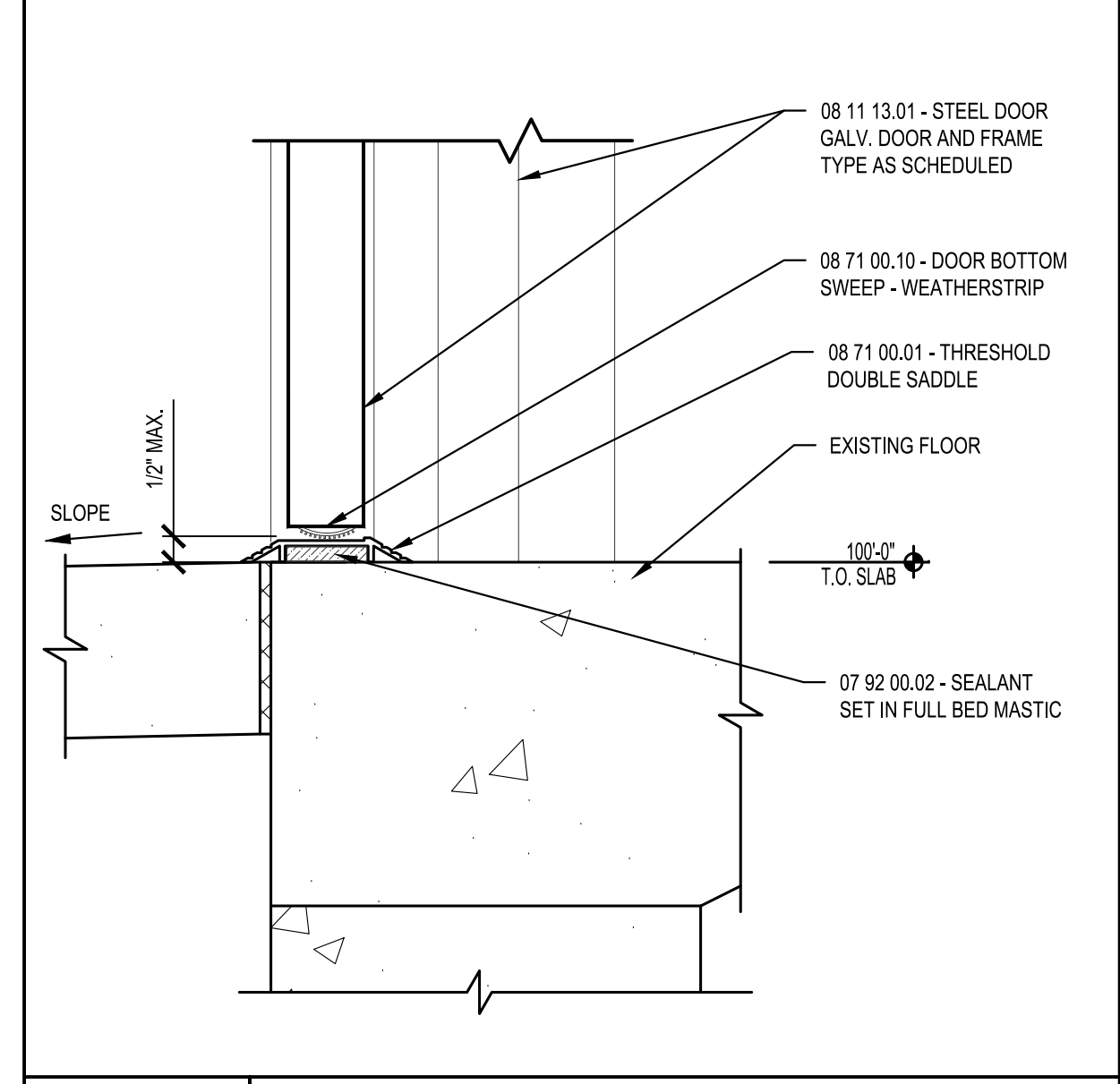
**NOTES**

**WINDOW GLAZING**

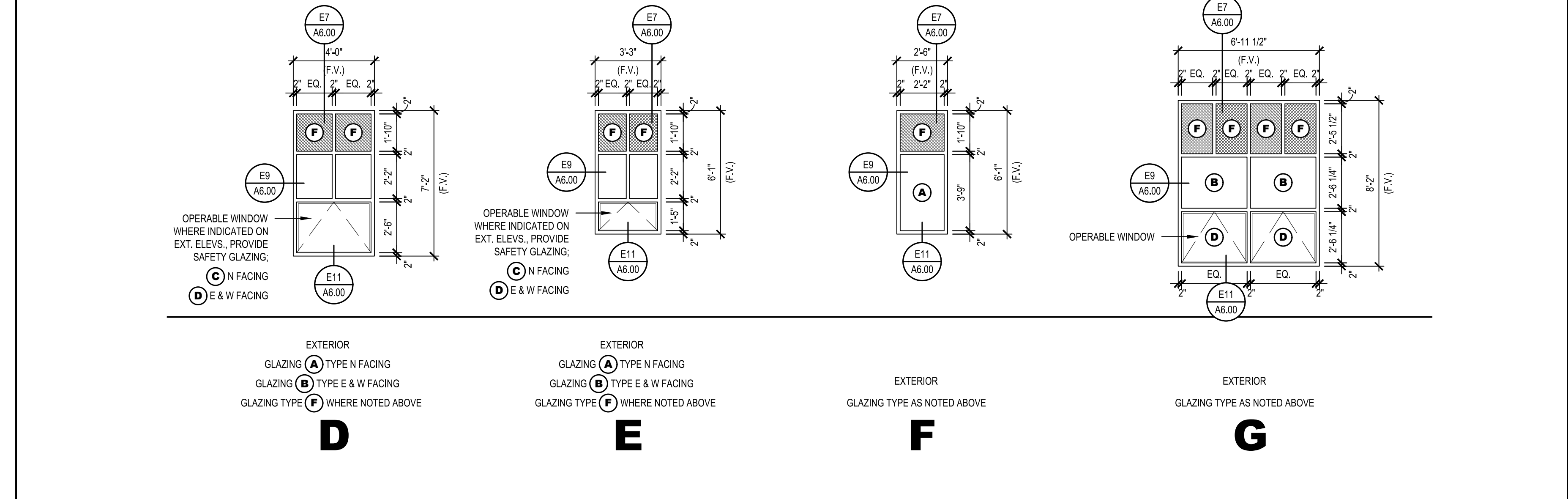
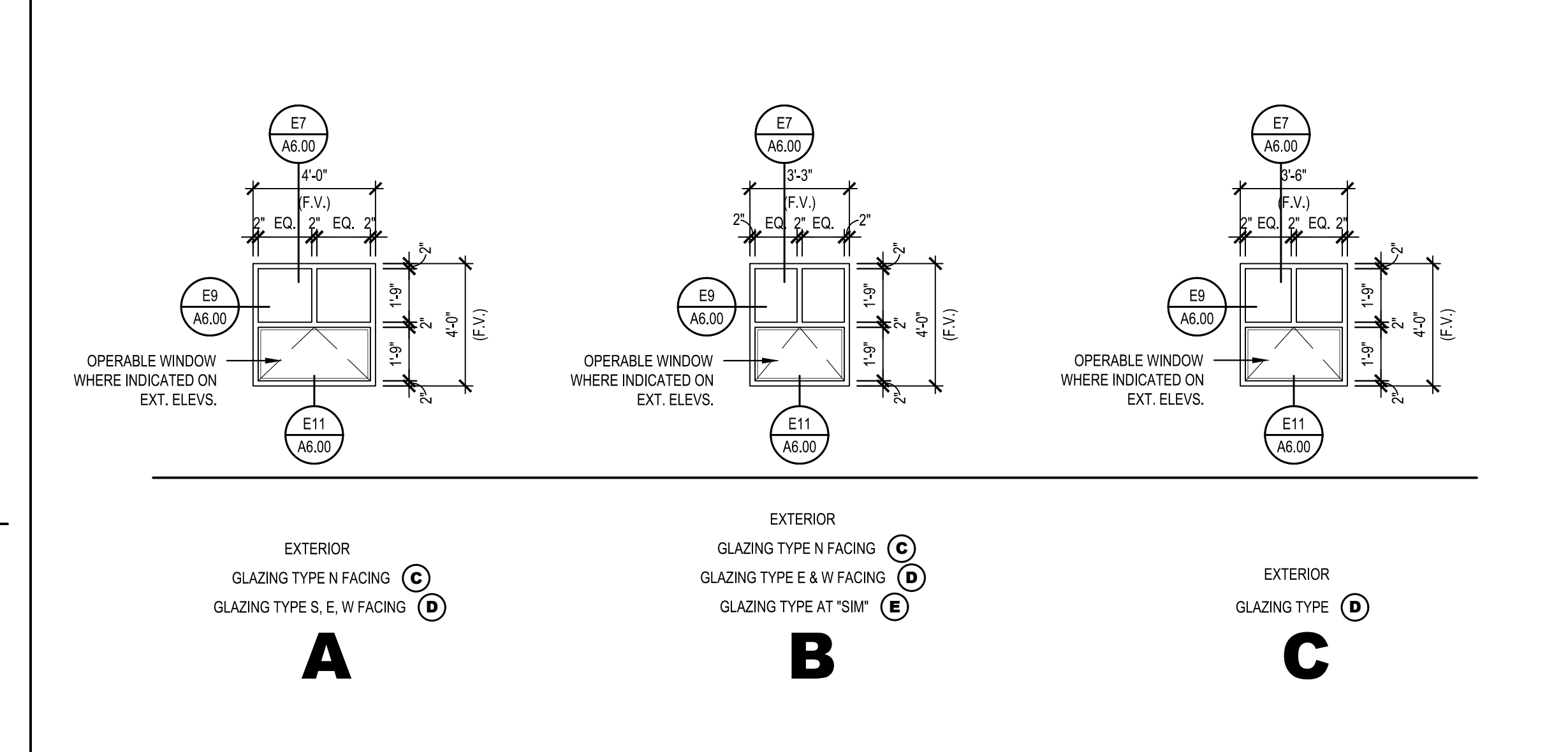
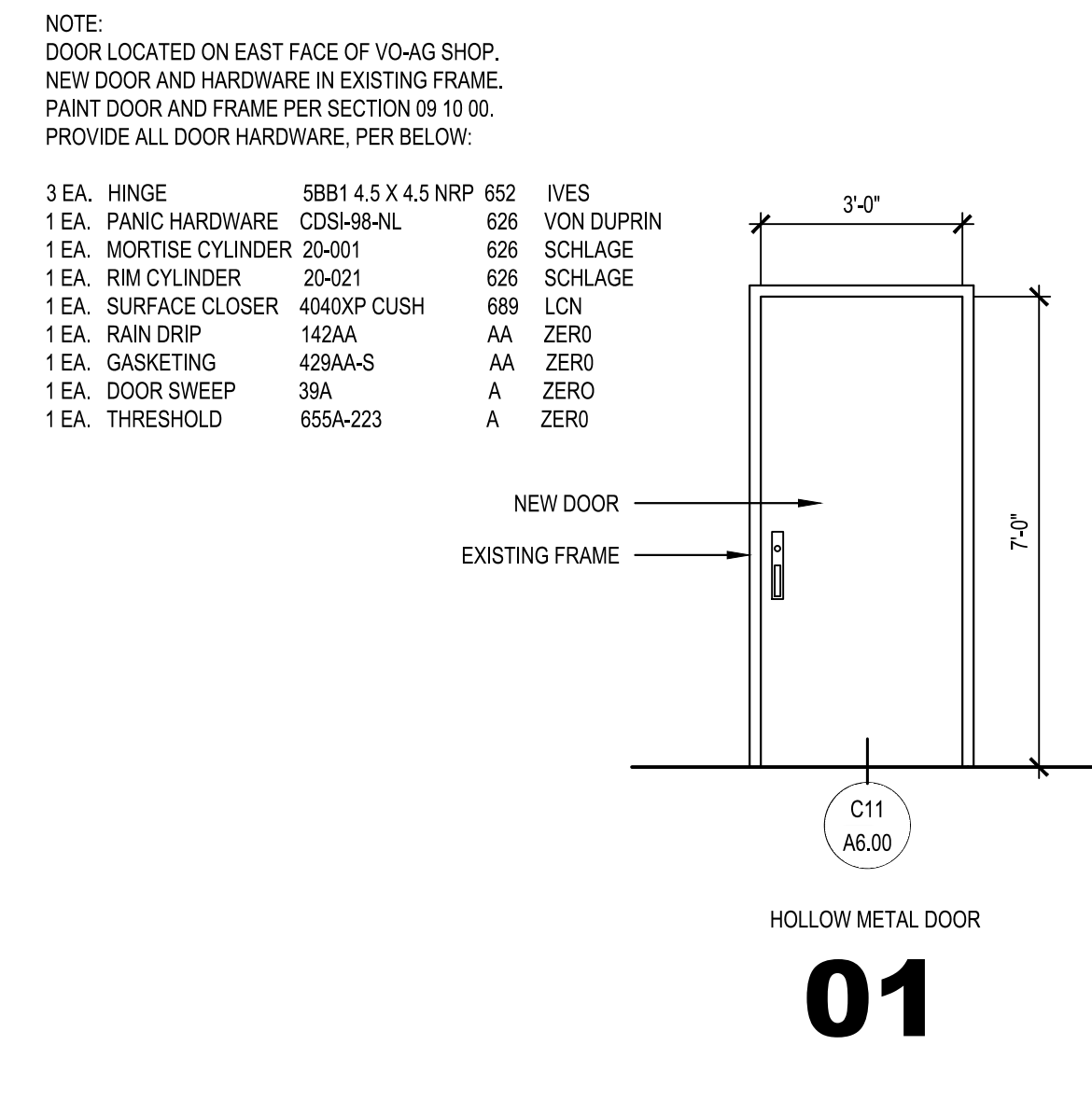
- REFERENCE SPECIFICATION SECTION 08 80 00  
NOTE: ALL GLAZING TYPES LISTED MAY NOT BE REQUIRED FOR THIS PROJECT
- (A) TYPE FG-D  
1" INSULATED GLASS, LOW E, NON-TEMPERED
  - (B) TYPE FG-E  
1" INSULATED GLASS - SOLARBAN R100
  - (C) TYPE SG-G  
1" INSULATED SAFETY GLASS - LOW-E
  - (D) TYPE SG-H  
1" INSULATED SAFETY GLASS - SOLARBAN R100
  - (E) TYPE SG-K  
1" INSULATED, TEMPERED OBSCURE PATTERNED GLASS
  - (F) INSULATED METAL SKIN  
PANEL BY SECTION 07 42 00



<b>E7</b>	<b>ALUM. WINDOW HEAD</b>	<b>E9</b>	<b>ALUM. WINDOW JAMB</b>	<b>E11</b>	<b>ALUM. WINDOW SILL</b>
3" = 1'-0"		3" = 1'-0"		3" = 1'-0"	



<b>C11</b>	<b>DOOR THRESHOLD</b>
3" = 1'-0"	



<b>A1</b>	<b>DOOR TYPES - BASE BID</b>	<b>A3</b>	<b>ALUMINUM WINDOW TYPES - BASE BID</b>	<b>A7</b>	<b>ALUMINUM WINDOW TYPES - BID ALTERNATES</b>
3/8" = 1'-0"		1/4" = 1'-0"		1/4" = 1'-0"	

**DESIGN WEST ARCHITECTS, P.A.**  
 MENDOTA, IDAHO • PULLMAN, WASHINGTON  
 KENNEWICK, WASHINGTON • GAITHERSBURG, MARYLAND  
 www.designwestpa.com

DRAWN BY JR  
 CHECKED BY BW  
 JOB NUMBER 26007  
 REVISIONS

LICENSED ARCHITECT  
 BRANDON WEHOLT  
 AR-98335  
 05/13/2026  
 STATE OF IDAHO

**BLISS SCHOOL DISTRICT**  
**FACILITY IMPROVEMENTS**  
 601 US-30  
 BLISS, IDAHO

DATE **05/13/2026**  
 SHEET NAME **DOOR & WINDOW TYPES**  
 SHEET **A6.00**