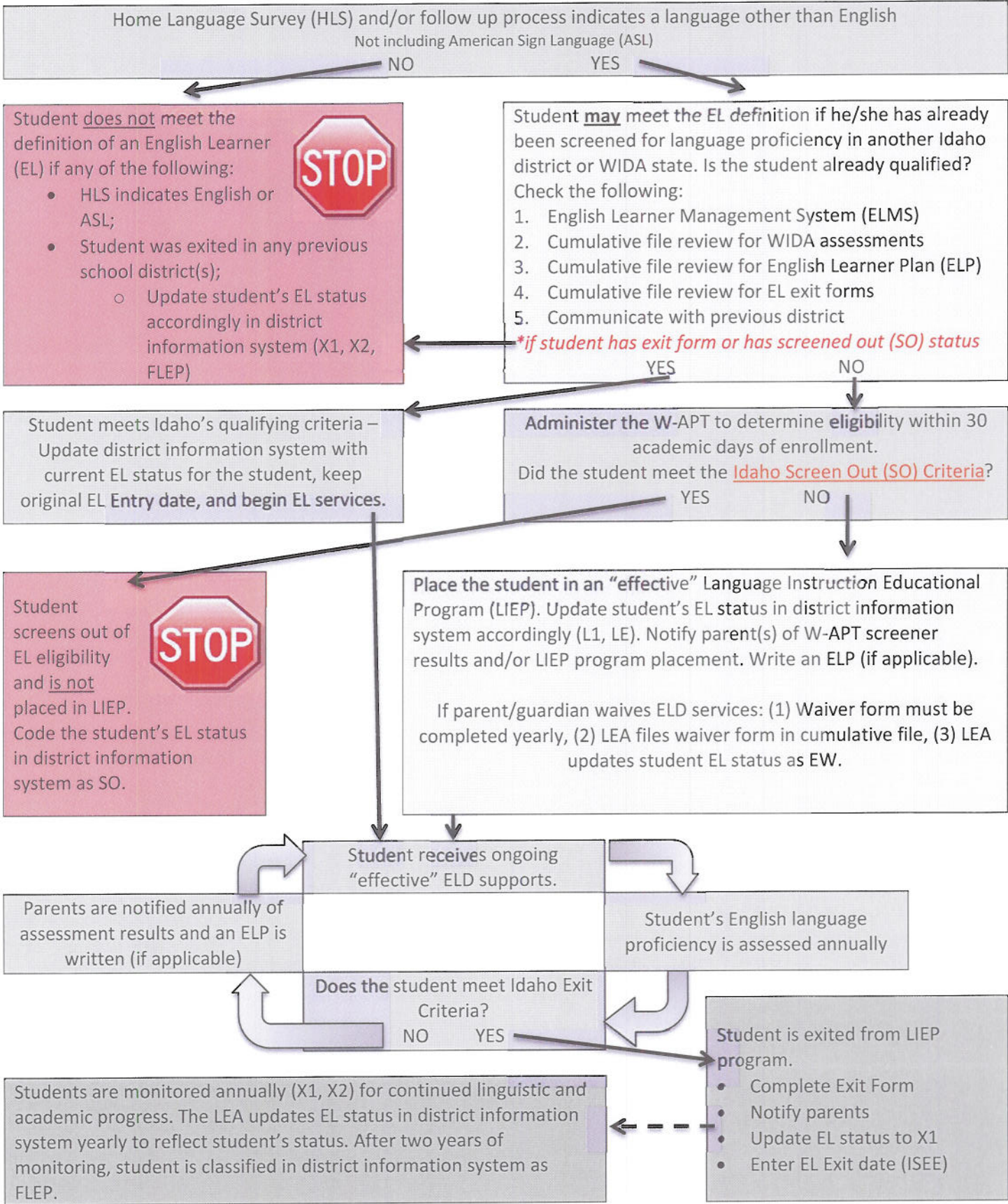


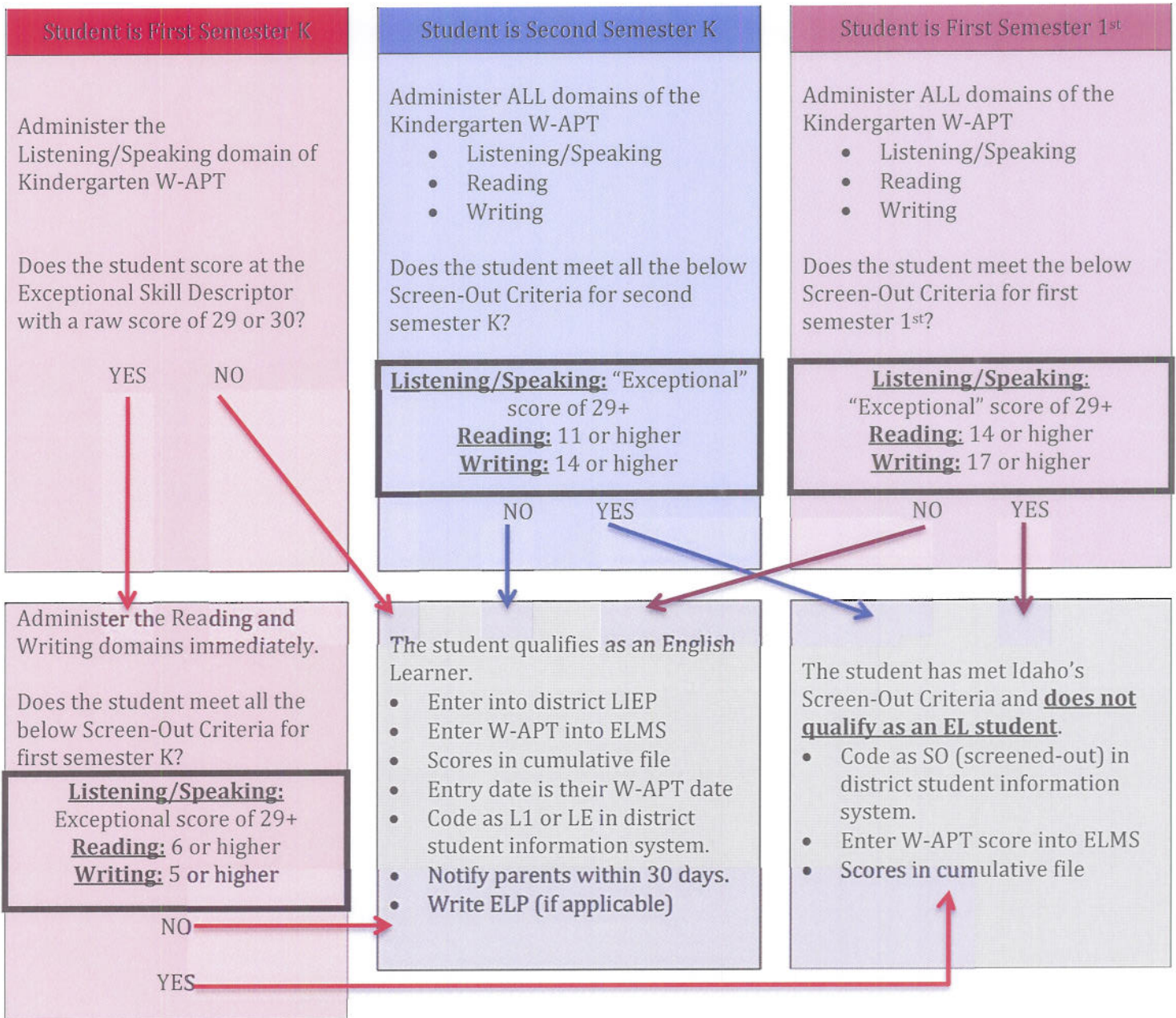
Appendix C: Decision to Assess Matrix

<u>Question</u>	<u>Answer</u>								
1. What language(s) are spoken in the home?	Other than English	English	English	English	English	English	Other than English	Other than English	Other than English
2. What language(s) does your student speak most often? <i>(Always triggers a test if answered as a language other than English)</i>	English	Other than English	English	English	English	English	Other than English	Other than English	Other than English
3. What language(s) did your student first learn?	English	English	Other than English	English	English	English	Other than English	Other than English	Other than English
4. Which language does your student speak with you? <i>(Always triggers a test if answered as a language other than English)</i>	English	English	English	Other than English	English	English	Other than English	Other than English	Other than English
5. Which language do you use when speaking with your student?	English	English	English	English	Other than English	English	English	English	Other than English
Action:	Call: What is the exposure to other language(s) in the home?	Test	Call	Test	Call	Test	Test	Test	Test

If only questions 1, 3 or 5 have a language other than English, then call the home to clarify exposure to other language(s) and the potential impact on learning.

Exception: If question 1 and 3 are both marked as a language other than English, then administer the language placement test (W-APT, K-WAPT or WIDA Screener Assessment).





Grades 1-12 WIDA Online Screener Administration and Screen-Out Criteria

For all other grade levels (second semester 1st through 12th grade) administer the WIDA Online Screener Assessment. WIDA Online Screener Assessment is a clustered assessment, like ACCESS 2.0.



The WIDA Online Screener can be administered in a group setting with multiple clusters being assessed simultaneously. Approximate administration time is 60-90 minutes for WIDA Online Screener. Technology