



Diplomat Group



diplomats group



PREQUALIFICATION - DIPLOMAT STEEL

www.diplomatgroup.me



INTRODUCTION



Diplomat Group Of Companies
ISO Certified (ISO 9001:2008)



We wish to thank Sharjah Municipality, Chamber of Commerce, Economic Department and Ministries of concerned departments for their support and good wishes which has stood us in good stead and encouraged us to develop the company to what it is today.

Within a short span, Diplomat has carved a niche of itself as one of the most reputed air conditioning companies in the U.A.E., with commitment to quality and on time completion.

Our total commitment to complete projects to customer satisfaction has been the main driving force behind our success. We at Diplomat, strongly believe that this success has come through a combination of resources and experience, based on the firm foundation of technical expertise and dedicated management.

With the opening of new avenues and concepts and growing global concern for the environment, Diplomat has already contributed to environmental activities, and is marketing state-of-the-art services that are ecologically friendly and efficient.

We wish to record our gratefulness to our esteemed clients, our bankers and our business associates for their valued support and co-operation.

I would also personally like to assure our valued clients that we will continue our endeavor to provide expert, reliable and prompt services to meet total customer satisfaction.



Diplomat Group Of Companies ISO Certified (ISO 9001:2008)



Diplomat Group was established in the United Arab Emirates in the year 1990. Starting as an Air Conditioning specialist, the Company expanded into fields of Building Construction Turnkey Electro- mechanical Installations, Environment Control Engineering, Civil, Structural Steel, Interior Fit-Out Works, and has made a constructive contribution to the growth of United Arab Emirates.

Diplomat is one among the leading ISO 9001:2008 Companies, having over two decades of hands on experience in the field of complete Construction facilities. Diplomat prides itself on the quality and efficiency of Workmanship it delivers.

With a reputable history maintained over the many years in the industry, professional relationships built as well as the networks made with the various trade services, has allowed Diplomat to deliver each Project, on time, on budget and of the finest quality standards that we set to be achieved.

Diplomat maintains the skills and levels of competence required to achieve complete construction from start to finish, offering advice, Design, Engineering, Construction and Project delivery, we ensure that each element from concept to completion is accurately assessed to provide a tailored solution to the development of the Project within the Budget.



Diplomat Group Of Companies
ISO Certified (ISO 9001:2008)



Diplomat Group is proud to be one of the leading Group of Companies associated with reputed architects, consultants & contractors. It has successfully executed many innovative, specialized & complicated projects from “Design, Drawing to Contracting on One Platform” with strict adherence to quality & completion dates.

Diplomat Group today is geared to meet the ever growing challenges expanding it's operations widely in the following countries.

United Arab Emirates

Kingdom of Saudi Arabia

Qatar

India



Diplomat Group Of Companies
ISO Certified (ISO 9001:2008)



DIPLOMAT GROUP , is a specialized Division of the Group engaged in Civil, Structural and Interior design and contract furnishing. With the expertise of a team of Engineers and Architects and advanced facilities, the Division is capable of executing Civil, Structural & Interior design projects of any magnitude in conformance with client specifications.

DIPLOMAT GROUP - STEEL DIVISION , Is a Steel Fabricator facility is often tasked with the job of delivering some of the most challenging of projects within a short timescale. Our Staff is not just fabricators and welders, but craftsmen who take pride in their work. We are a full service steel fabrication, and quick turn around times to finish any project on-time, on-budget and according to our customer's specification.



Diplomat Group Of Companies
ISO Certified (ISO 9001:2008)



Offering Construction Solutions as follows;

Civil Construction

Building Contracting
Road Work Contracting
Landscaping Work
Controlled Demolition Work
Minor Bridges

MEP

HVAC
Electrical & low Current Services
Plumbing, Drainage & Fire Fighting works

Structural Steel

Full Service Structural Fabrication & Erection
Hot Rolled Structure
Pre Engineered Structure
“Z” Purlins and “C” Channels
Aluminum and Steel profile sheets
Aluminum and Steel sandwiched Panels
Fire Proofing

Interior Fit-Out

Interior & Exterior Decoration
Gypsum / Ceiling & Partition
Marble
Joinery / Wood Floor
Ironmongery
Carpet / Fabric
Door & Windows



CERTIFICATE & APPROVALS



Diplomat Group Of Companies ISO Certified (ISO 9001:2008)



CERTIFICATES

Certificate AE15/2937.01

The management system of

DCE CONTRACTING LLC

108, Plot No: 241-296, Al Nahda 2 , Dubai, United Arab Emirates

has been assessed and certified as meeting the requirements of

ISO 9001:2008

For the following activities

Civil Construction related activities such as Structural steel works, Screed, Block works, Plastering, Floor & Wall tiling / Marble works, Gypsum partitions, Ceiling, Door/ windows, Bulk Heads, Painting , Epoxy Coatings and Water Proofing Activity.

This certificate is valid from 15 April 2015 until 15 April 2018 and remains valid subject to satisfactory surveillance audits. Re certification audit due before 20 February 2018 issue 1. Certified since 15 April 2015

Multiple certificates have been issued for this scope The main certificate is numbered AE15/2937.00

Authorised by

SGS United Kingdom Ltd Systems & Services Certification Rosemead Business Park, Epsom Port Cheshire, CH68 3EN UK t +44 (0)151 350-6555 f +44 (0)151 350-6560 www.sgs.com

SGS 9001-8 01 0614

Page 1 of 1

SGS

UKAS MANAGEMENT SYSTEMS 0005

This document is issued by the Company subject to its General Conditions of Certification Services accessible at www.sgs.com/certification and, conditions are Attention to draw to the limitations of liability, indemnification and jurisdictional issues established therein. The authenticity of this document may be verified at <http://www.sgs.com/certification> Our Company/Certified Client Directives/Certified Clients Directives apply. Any unauthorised alteration, forgery or falsification of the content or appearance of this document is unlawful and offenders may be prosecuted to the fullest extent of the law.

شرفة تجارة وصناعة الشارقة
Sharjah Chamber of Commerce & Industry

شهادة انضمام
Membership Certificate

انضمام تجارة وصناعة الشارقة
Membership Registration Certificate For Year 2015

إن شرفة تجارة وصناعة الشارقة بناءً على قانونها رقم (1) لعام ٢٠٠٣ Sharjah Chamber of Commerce and Industry according to the law no. (1) 2003 ديبلومات للمهنات الثقيلة م م ح

قيد سجلات:

DIPLMAT HEAVY INDUSTRIES FZE : Company Name

رقم العضوية: 800499 : Membership Number:

الجنسية: Nationality

رقم الترخيص: 1195 : License No

رقم السجل التجاري: 0 : Commercial Registration No

في الفئة: منطقة حرة ح : Category

جنسية الشركاء: هادي : Partners' nationalities

رخصة المنطقة الحرة : HAMRIYAH FREEZONE

المنطقة الحرة بالبحرية : HAMRIYAH FREEZONE

الشكل القانوني: Legal Status

العنوان: Address

نشاطه: FABRICATION-ELECTION-PAINTING & BLASTING OF STEEL & STEEL WORKS- , MANUFACTURING OF STEEL POLES-AIR HANDLING UNIT & BUILDING MATERIALS, : Activity

ملاحظات: Remarks

S. A. S.

تاريخ الانتهاء: 17/06/2016

تاريخ الاصدار: 18/06/2005

B 051618



L I S T O F M A N P O W E R



Diplomat Group Of Companies ISO Certified (ISO 9001:2008)



MANPOWER LIST

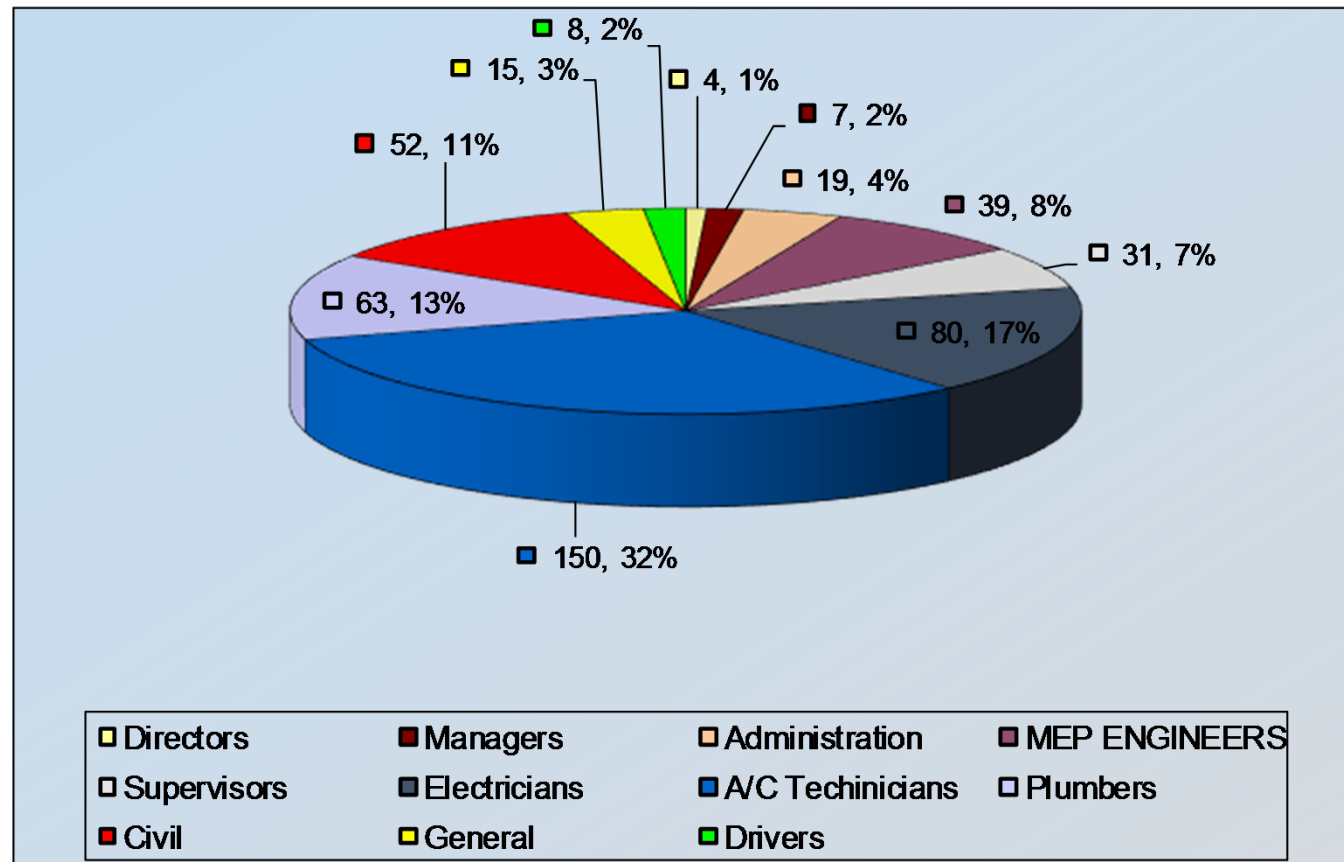
SI No.	Designation	Strength
1	Managing Director	1
2	Group General Manager	1
3	Deputy Managing Director	1
4	General Manager	1
5	Project Manager (MEP)	2
6	Project Manager (Civil)	2
7	Project Engineer (HVAC)	2
8	Project Engineer (Electrical)	2
9	Project Engineer (Plumbing)	1
10	Site Engineer (HVAC)	3
11	Site Engineer (Electrical)	3
12	Site Engineer (Plumbing)	2
13	Civil Engineer	1
14	Estimation & Planning	6
15	Draughtsman (HVAC)	3
16	Draughtsman (Electrical)	3
17	Draughtsman (Plumbing)	2
18	Supervisor (HVAC)	4
19	Supervisor (Electrical)	3
20	Supervisor (Plumbing)	2
21	Supervisor (Civil)	4
22	Charge Hand (HVAC)	5
23	Charge Hand (Electrical)	6
24	Charge Hand (Plumbing)	3
25	Charge Hand (Civil)	6
26	Mason	12
27	Painter	17
28	Carpenter	21
29	Skilled Technician (HVAC)	9
30	Electrician	15
31	Plumber	11
32	Helper	38
33	Administration Department	6
34	Accounts Department	4
35	Purchase Department	8
36	Storekeeper	5
37	Driver	8
38	Operator	12
39	Welder	8
40	Insulator	4



Diplomat Group Of Companies
ISO Certified (ISO 9001:2008)



EMPLOYEES STRENGTH, Total Employees





Diplomat Group Of Companies
ISO Certified (ISO 9001:2008)



KEY MANAGEMENT

SR. No	Designation	Name of Personnel	Total Experience (yrs)	Experience in similar capacity (yrs)	Duration of Employment with Diplomat (yrs)
1	Managing Directo				
2	Director Procurement & Contracts				
3	Executive Director				
4	Chief Executive Officer				
5	Chief Financial Officer				
6	Manager BD & Operations				
7	Sr. Manager Planning				



L I S T O F M A C H I N E R I E S

ertified (ISO 9001:2008)



nat

panies
(08)

LIST OF MACHINERY AND TOOLS

Sl. no	Description	Qty
1	51GSD2187 WRAC 18MBH 230V	3
2	AC Data Logger/Recorder	1
3	Air Compressor with Hose	1
4	Aluminium Spirit Level	42
5	Allen Key Set	16
6	Allen Key Set	120
7	Aluminium Ladder 6ft	2
8	Aluminium Ladder 8ft	2
9	Angle Grinder Machine, Dewalt	2
10	Anemome	1
11	Arbors for Hole Saw	17
12	Automatic Level Machine	1
13	Band Saw Machine	1
14	Bar Bending Machine, Silla	1
15	Bar Cutting Machine, Silla	1
16	Bavelloni Bevelling Machine	1
17	Bavelloni Shape Bevelling Machine	1
18	Bending Machine	5
19	Bending Machine Die Set	3
20	Bi Hole Metal Saw	34
21	Bolt Cutter	1
22	Breaker TE 106	2
23	Calibration and Certification of Universal Perfeçor (Perflow) SI no 40633	1
24	Centre Punch (Product No 1984)	30
25	Chalkline Reel	9
26	Chisel & Breaker	5
27	Chisel Drop Forged (Product No 102)	90
28	Chisel Drop Forged (Product No 105)	30
29	Chisel Stoning H/D Rubber Grip	60
30	Circular Cutting Saw	2
31	CNC Glass Cutting Table	1
32	CNC Router Machine/Wood Working Machine	1
33	Compact Floor Saw Dimas FS 500F/Hatz	1
34	Complete Die Set Arc	4
35	Compressor with Dryer	1
36	Compressor, 100litres, Single Phase	1
37	Concrete Mixer, Electric, Silla	2
38	Containers (20/40)	2
39	Containers Standard	2
40	Core Bit 102mm	1
41	Core Bit 152mm	1
42	Core Bit 82mm	1
43	Core Bit 52mm	1
44	Core Drilling Machine upto 200mm with Electric Water Pump	1
45	Coring Bit with Connection End 47mm	1
46	Coring Machine Bit	1
47	Coring Machine DD 130 Total Set	1
48	Crimping Tool	1
49	Cutoff Machine 14"	2
50	Cutting Machine	1
51	Diagonal Cutting Nipper 1084/160	27
52	Diamond Core Cutting Machine	1
53	Diamond Cutter 7"	8
54	Diamond Cutter 9"	10
55	Diamond Cutting Disc	4

LIST OF MACHINERY AND TOOLS

Sl. no	Description	Qty
56	Domestic Grinding Mill	1
57	Double Belt Sander	1
58	Double Cabin Hoist, H=45m, Lifting Capacity 2x2000kg, SC200/200	1
59	Double Ended Spanner Set	120
60	Drill Machine 1304	4
61	Drill Machine Hitachi 13mm	4
62	Dumper Interband	1
63	Edge Polishing Machine	1
64	Electric Poker Dynapac AX40, Turbedia 40mm, Hose 5m, 10m Cable	2
65	Electric Poker Dynapac AX56	1
66	Electronic Chain Hoist - 2T, 7M Chain, 3 Ph	1
67	Engineers Hammer	14
68	Engraving Machine	1
69	Fibre Ladder	5
70	Five Section Tool Box Beta C20L	11
71	Floor Maintenance Machine	1
72	Fork Lift	1
73	Frame Cutting Machine	1
74	Frequency Converter Dynapac UF80, 1.8KVA, 2 Outlets	1
75	Glass Boring Machine	1
76	Glass Cutting Table	1
77	Glass Edge Polishing Machine	1
78	Glass Washing Machine	1
79	Glue Mixing Machine	6
80	Golden Horn TFT 1500 Skid MTD Fuel Tank 1500L	1
81	GRC 132 Cutting Plotter	1
82	Grinder 9" DC 230	7
83	Grinder Contec Delta 11	1
84	Hacksaw Frame Small	120
85	Hammer 500gms	120
86	Hammer Stoning H/D Wooden Handle	30
87	Hammering Drill Machine Hitachi 16	3
88	Hand Riveter	9
89	Hilti Coring Bit 52mm	1
90	Hilti Drill Bit 10mm TC-C 10/17	100
91	Hilti Drill Bit 12mm TC-C 12/17	100
92	Hilti Drill Bit 6mm TC-C 6/12	100
93	Hilti Drill Bit 6mm TC-C 6/17	100
94	Hilti Drill Bit 8mm TC-C 8/17	100
95	Hilti Drill Machine 2, 230V	10
96	Hilti Drill Machine 6-S, 230V	10
97	Hilti Drill Machine TE 905 AVR	5
98	Hilti HSS Drill Bit 4.5mm	200
99	Hot Press Machine 90t	1
100	HT Colt Skeleton Caulking Gun	10
101	Hydraulic Grooving Machine HGC-12 with Grooving Stand	1
102	Inkjet Printer	2
103	Insulation Tester	1
104	Jigsaw Machine Makita	5
105	Lamination Machine	1
106	Laser Machine	1
107	Long Belt Sander	1
108	Machine Screw	3
109	Manlift ABM Belone 900	1
110	Manual Ultra Lamli Trimmer	1

ertified (ISO 9001:2008)



nat

anies
(08)

LIST OF MACHINERY AND TOOLS

Sl. no	Description	Qty
111	Master 2200 380-415V	5
112	Membrane Press Machine	1
113	Minarc 150 230V	2
114	Mini Mixer 230V	1
115	Miulti Purpose Machine (7 Profile)	1
116	Motorised Trolley	1
117	Multi Belt Sanding Machine	1
118	Multi Cam Machine	1
119	Omega Plotter wit Cutter	1
120	Paint Booth Heating Chamber	1
121	Panel Cutting Saw	1
122	Pay Clock Machine	1
123	Perkins Diesel Generator 150KVA	1
124	Pipe Vice 14" - 2 PVOI Taparia	2
125	Pipe Wrench	12
126	Pipe Wrench 12"	120
127	Pipe Wrench 16"	3
128	Pipe Wrench 18"	63
129	Pipe Wrench Heavy Duty 18"	15
130	Planer	1
131	Plate Compactor	1
132	Plier 1048/240	12
133	Plier Cutting	120
134	Plier Long Nose	120
135	Plier Monkey	120
136	Plier Vice Grip	120
137	Plier, Long Nose Needle	13
138	Plier, Riveting	11
139	Plier, Wire Stripper	16
140	Pliers Carpenters 6" Double Dip Handle	30
141	Plumb Heavy	120
142	Plumbob Brass	30
143	Portable Ablution Unit	1
144	Portable Cabin 2R	1
145	Portable Cabin 2R+K+B	1
146	Post-Forming Machine	1
147	Prefector Plus Computerised Commissioning Unit	1
148	Pump Grundfos	1
149	Remote 4 Way Control	1
150	Rock Hopper Colour Printer	1
151	Rotary Hammer	2
152	Rotary Hammer Drill	26
153	Sand Blasting Machine	1
154	Saw Machine-Beam Panel	1
155	Scaffolding Tower Components	8
156	Screw Compressor with Dryer	1
157	Screw Driver (Product No 861)	90
158	Screw Driver (Product No 862)	60
159	Screw Driver (Product No 862.25)	120
160	Screw Driver (Product No 922)	60
161	Screw Driver (Product No 923)	90
162	Screw Driver (Product No 928)	120
163	Screw Driver (Product No 935 I)	120
164	Screw Driver Set of 8 pieces	17
165	Screw Driver (Product No 828)	90

LIST OF MACHINERY AND TOOLS

Sl. no	Description	Qty
166	Self-loading Cement Truck Mixer 1997	1
167	Shearing Machine	1
168	Skid Steel Loader	1
169	Slitting Machine	1
170	Slitting Tool with 2 no 5" Blades	1
171	Solar Photovoltaic Module 100 Watts	3
172	Solar Water Heating System 100lts capacity	1
173	Sound Survey Meter	1
174	Spanner Adjustable	120
175	Spanner Box Type Tubulan (10x11, 12x13, 16x17)	120
176	Spanner Ring Type	120
177	Spindle Machine	1
178	Screw Driver	90
179	Tester Yellow (Product No 813)	60
180	Threading Machine Beaver 50	2
181	Tool Box 5 Compartments With Jelly Locks 55cm	120
182	Tool Box for Plumbing	3
183	Tool Kit SF 121 A-3.0, 230v	1
184	Tool Set for Scaffolding	1
185	Tripod	1
186	Twintec TT-455S	1
187	Unibind S225 Machine	1
188	Universal Vacuum Cleaner	2
189	Vacuum Pump	1
190	Veneer Shearing Machine	1
191	Veneer Stitching Machine	1
192	Vertical Edge Profile Roto Cutter	1
193	Vibrator Dynapac BV20A, Working Width 2m	1
194	Vibrator Dynapac UF60	1
195	Vibrator HC50	4
196	Vibrator HE50	2
197	Vibrator HP50	2
198	Vibratory Rammer, Dynapac LT6000, Petrol Driven	1
199	Wacker Power Trowel W/Honda	1
200	Wall Chasing Machine	1
201	Wall Saw Premium Set	1
202	Water Jet Cutting Machine	1
203	Welding Machine 3 Phase 250A Inverter Welding	1
204	Wide Blade	14
205	Window AC	40
206	Wireless Camera 126	2
207	Wireless Camera 128	8
208	Wrench Adjustable 110/250 Beta	11

rtified (ISO 9001:2008)



nat

panies
(08)



CNC Plasma Cutting Machine

www.diplomatgroup.me

rtified (ISO 9001:2008)



nat

anies
(08)



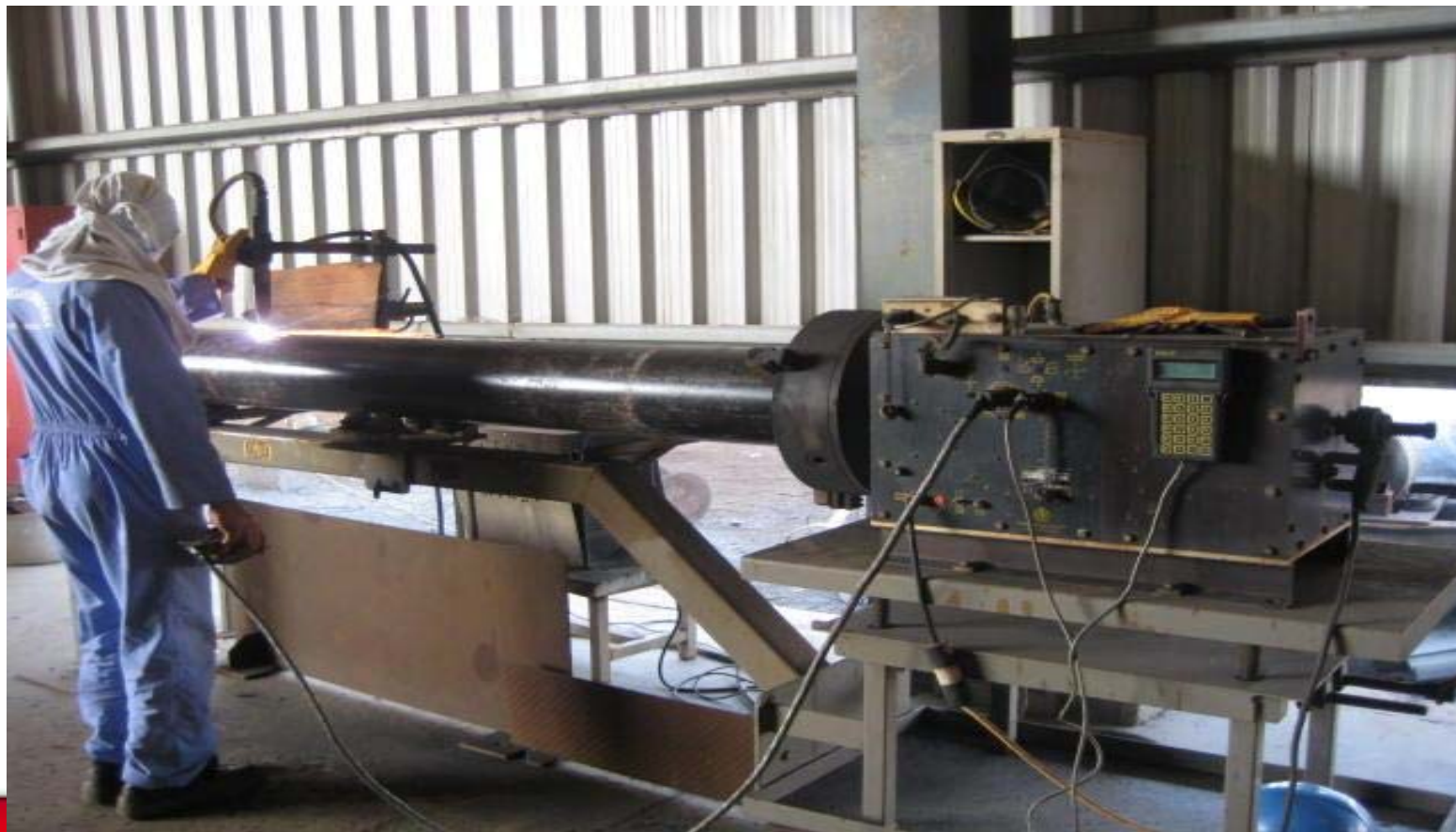
CNC Optical Tracing Machine

rtified (ISO 9001:2008)



nat

panies
(08)



CNC Pipe Profile Cutting Machine

rtified (ISO 9001:2008)



nat

panies
(08)



Band Saw Cutting Machine

rtified (ISO 9001:2008)



nat

panies
(08)



CNC Punching Machine



LIST OF PROJECTS & PHOTOS



Diplomat Group Of Companies ISO Certified (ISO 9001:2008)



LIST OF MAJOR CLIENTS

1	Federal National Council	41	Burger King Restaurant
2	Sharjah Government	42	Arabian Radio Network
3	Dubai Civil Aviation	43	Al Tayer Group
4	PWD/Zayed Foundation	44	Almulla Group
5	Mafrq Hospital, Abu Dhabi	45	Mr Saeed and Mohd Juma Al Naboodah
6	Central Hospital, Abu Dhabi	46	Landmark Group
7	Emirates Telecommunications Co – Etisalat	47	Almassa Cinema
8	Dubai Electricity and Water Authority	48	Paris Gallery
9	Emirates Petroleum Products Co – EPPCO	49	Al Ain Mineral Water Company
10	Emirates national Oil Company – ENOC	50	Varkey Group of Schools
11	Dubai Aluminium Company – DUBAL	51	Trading Enterprises (Al Futtaim Group)
12	Dubai World Trade Centre	52	Asia Bolt Industries LLC
13	Emaar Properties PJSC	53	Asian Palace Restaurant
14	Jumeirah International	54	Green Coast Enterprises
15	Knowledge Village	55	Kingdom 01 FZ (LLC)
16	Aldar Real Estate Services LLC	56	Leisure Unlimited LLC
17	Emirates Airlines	57	Trade Arabia FZE
18	British Airways	58	Zabeel Investments
19	DNATA		
20	Carrefour Hypermarkets – MAF Group		
21	All Metals and Galvanising Factory		
22	Strategic Food International		
23	Al Tajir Glass Industries		
24	Sharp Middle East		
25	Modern Freight Co LLC		
26	Linde AG		
27	Bonnet Nave		
28	Bin Dhaher Trading Enterprises		
29	Gulf Commercial Group		
30	Jumeirah Beach Hotel		
31	Abjar Group of Hotels		
32	Astoria Hotel		
33	Jumeirah Rotana Hotel		
34	Sharjah University		
35	American University		
36	Dubai College		
37	HSBC Bank Middle East		
38	Mashreq Bank		
39	ABN Amro Bank		
40	McDonald's Restaurant		



Diplomat Group Of Companies
ISO Certified (ISO 9001:2008)



STRUCTURAL STEEL PROJECTS



Diplomat Group Of Companies
ISO Certified (ISO 9001:2008)



On - Going Projects

IMG Theme Park-1

Project-1

EMAL

Project-2

**WASTELESS SEA WATER AND BRINE
PROCESSING COMPLEX**

Project-3



Diplomat Group Of Companies
ISO Certified (ISO 9001:2008)



IMG Theme Park-1

Project-1



SYNOPSIS



Client
Scope of Works

- **IMG Theme Park Dubai**
- **Design, Connection Detail,
Supply, Fabrication, Erection
Fire Proofing, Sandwich Panel**

Value of Project

- **30 Million AED Dirhams**

Duration of Project

- **8 Months**



Diplomat Group Of Companies
ISO Certified (ISO 9001:2008)



IMG Theme Park-1

Project-1



Zone Area



Marvel Zone – MA48

Entertainment Zone – EZ26

Lost Valley – LV81

Lost Valley – LV85

Entertainment Zone – EZ23

Marvel Zone – MA43

Marvel Zone – MA45

Lost Valley – LV84B

Lost Valley – LV83

And Other 19 Internal Buildings

IMG Theme Park-1



Project-1



IMG Theme Park-1

- **ACTIVITY**

- 1- Fabrication
- 2- Painting
- 3- Delivery
- 4- Steel Erection
- 5-Fire Proofing (Cementitious)
- 6-Fire Proofing (Board)
- 7- Purlins / Cleats
- 8-Sanwich Panel

- **DURATION** = 4 Months

- **STEEL WEIGHT** = 400 T



MARVEL MA48

IMG Theme Park-1

- **ACTIVITY**
 - 1- Fabrication
 - 2- Painting
 - 3- Structural Erection
 - 4-Fire Proofing (Cementitious)
 - 5-Purlins / Cleats
 - 6-Fire Proofing (Board)
 - 7-Sandwich Panel
- **DURATION** = 35 Days
- **STEEL WEIGHT** = 68 T



ENTERTAINMENT ZONE – EZ26

IMG Theme Park-1

- **ACTIVITY**

- 1 - Fabrication
- 2 -Painting
- 3 - Structural Erection
- 4 -Fire Proofing (Cementitious)
- 5 -Purlins / Cleats
- 6 -Fire Proofing (Board)
- 7 -Sandwich Panel

- **DURATION** = 20 Days

- **STEEL WEIGHT** = 18 T



LOST VALLEY – LV81

IMG Theme Park-1

- **ACTIVITY**

- 1- Fabrication
- 2 - Painting
- 3- Structural Erection
- 4-Fire Proofing (Cementitious)
- 5-Purlins / Cleats
- 6-Fire Proofing (Board)
- 7-Sandwich Panel

- **DURATION** = 10 Days

- **STEEL WEIGHT** = 70 T



LOST VALLEY – LV85

IMG Theme Park-1

- **ACTIVITY**

- 1- Fabrication
- 2- Painting
- 3- Structural Erection
- 4-Fire Proofing (Cementitious)
- 5-Purlins / Cleats
- 6-Fire Proofing (Board)
- 7-Sandwich Panel

- **DURATION** = 50 days
- **STEEL WEIGHT** = 25 T



ENTERTAINMENT ZONE – EZ23

IMG Theme Park-1

- **ACTIVITY**

- 1- Fabrication
- 2- Painting
- 3- Structural Erection
- 4-Fire Proofing (Cementitious)
- 5-Purlins / Cleats
- 6-Sandwich Panel

- **DURATION** = 45 Days

- **STEEL WEIGHT** = 35 T



MARVEL ZONE – MA43

IMG Theme Park-1

- **ACTIVITY**

- 1- Fabrication
- 2- Painting
- 3- Steel Erection
- 4-Cat Walk Erection
- 5-Fire Proofing (Cementitious)
- 6-Purlins / Cleats
- 7-Sandwich Panel

- **DURATION** = 50 Days

- **STEEL WEIGHT** = 300 T



MARVEL ZONE – MA45

IMG Theme Park-1

- **ACTIVITY**

- 1- Fabrication
- 2- Painting
- 3- Structural Erection
- 4- Cat Walk Erection
- 5-Fire Proofing (Cementitious)
- 6-Purlins / Cleats
- 7-Sandwich Panel

- **DURATION** = 14 Days

- **STEEL WEIGHT** = 55 T



LOST VALLEY – LV84B

IMG Theme Park-1

- **ACTIVITY**

- 1- Fabrication
- 2- Painting
- 3- Structural Erection
- 4- Cat Walk Erection
- 5 -Fire Proofing (Cementitious)
- 6-Purlins / Cleats
- 7-Sandwich Panel

- **DURATION** = 60 Days

- **STEEL WEIGHT** = 460 T



LOST VALLEY – LV83



Diplomat Group Of Companies
ISO Certified (ISO 9001:2008)



EMAL

Project-2

SYNOPSIS

Client

Commencement Date

Scope of Works

Value of Project

Duration of Project

- IMG Theme Park

- June 2015

**- Design, Connection Detail,
Painting, Supply, Fabrication, Erection
Fire Proofing, Sandwich Panel**

- 3.7 Million AED Dirhams

- 2 Months



Diplomat Group Of Companies
ISO Certified (ISO 9001:2008)



EMAL

Project-3

SYNOPSIS

Client

Commencement Date

Scope of Works

Value of Project

Duration of Project

- WASTELESS SEA WATER AND BRINE

- June 2015

**- Design, Connection Detail,
Painting ,Supply, Fabrication, Erection
Fire Proofing, Sandwich Panel**

- 4.5 Million AED Dirhams

- 4 Months



OPERATION PROCEDURE



FABRICATION



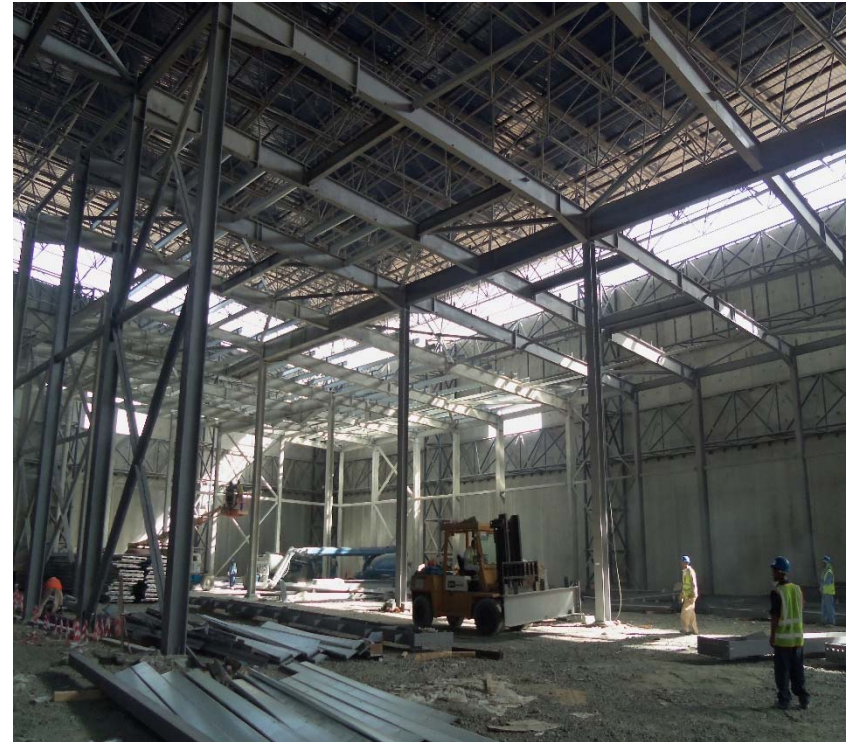
Diplomat Heavy Industries is a leading fabricators of structural steel in dubai, United arab emirates. As a steel fabrication company we are specialized in steel fabrication, steel structure fabrication, structural steel fabrication, waste water treatment works, all kind of structural steel customized fabrication works, ms & ss handrails, ms and steel tanks, ss grating and chequered plates, steel structures, repair and maintenance works, Pipe fittings etc. in Dubai, Abu Dhabi, northern Emirates and all over united arab emirates.

PAINTING



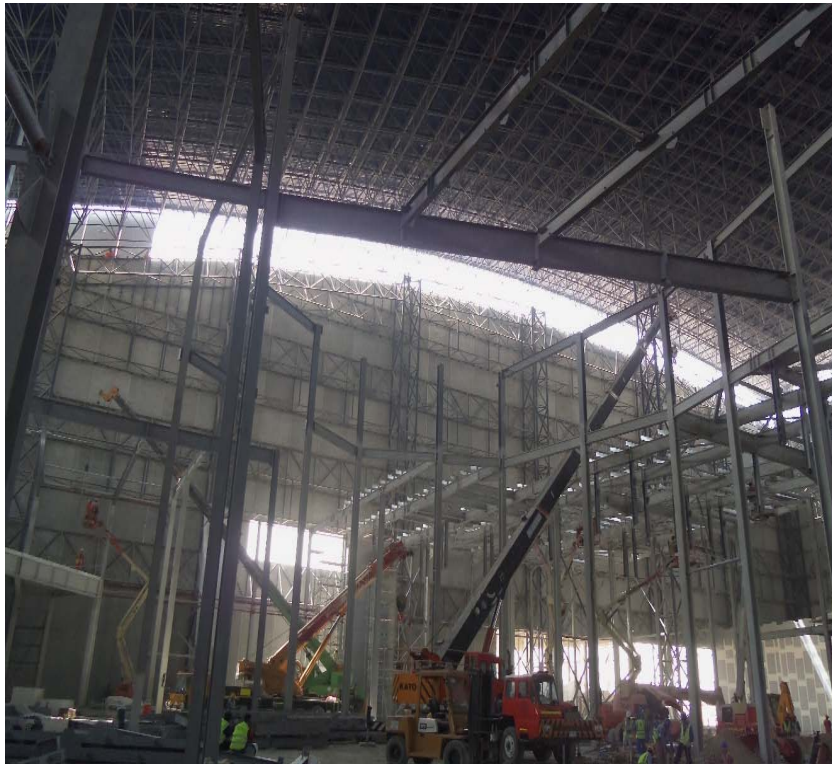
IMG THEME PARK PHASE 1 ACTIVITY

MATERIAL DELIVERY/ARRANGEMENT



To avoid materials being moved so much on jobsite that might cause unexpected damages of paint, shapes , when material delivered to job site, they must be unloaded and arranged closed to the designed erection point.Up to The materials shall be stacked in locations according to the building/areas, should be near to the lifting position adjacent to the area to be erected. This is to facilitate the sorting and delivery during the erection. the conditions of each job site, the material arrangement plan may different but in generally, materials will be arranges as following principle to ease moving, combination and erection after later.

STEEL ERECTION



MAIN SECONDARY STRUCTURE



VERTICAL & HORIZONTAL BRACING

The Structural frames and other parts of the building can be erected in various ways which will depend on the following key factors : 1. The type of structures such as: small clear span, large clear span, low rise building, high building , open web structure, etc 2. The availability of equipment such as cranes, winch, manually lift, etc, 3. Site Condition, The experience level of the erectors, 4. The Individual job Conditions, 5. The sequence/method of erection shall be studied and planned so that execution can be carried out in a safe, economical and efficient manner.

STEEL ERECTION



STAIRS & HAND RAIL



GRATING

ACTIVITY

STEEL ERECTION



CATWALK



SPACE FRAME

ACTIVITY

FIRE PROOFING



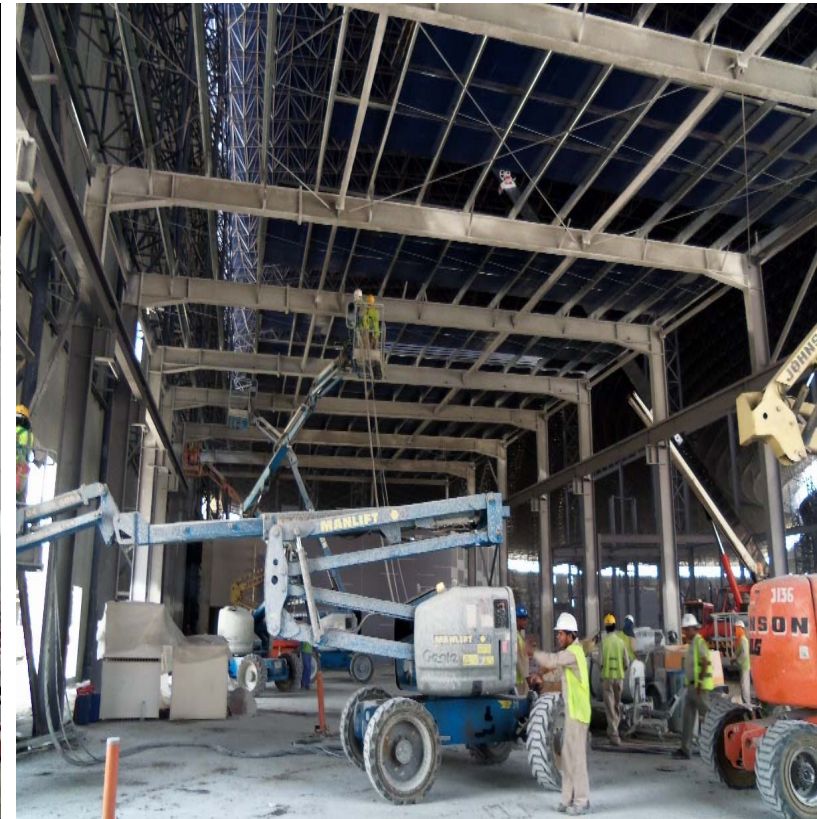
CEMENTITIOUS – as per the client requirements



BOARD – as per the client requirements

ACTIVITY

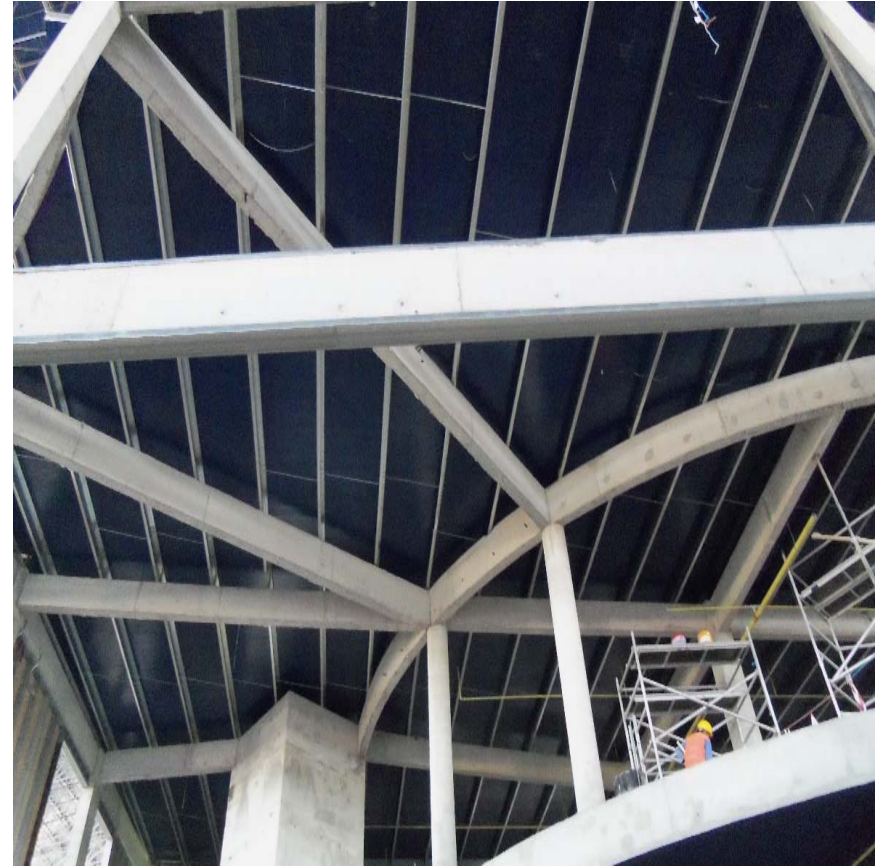
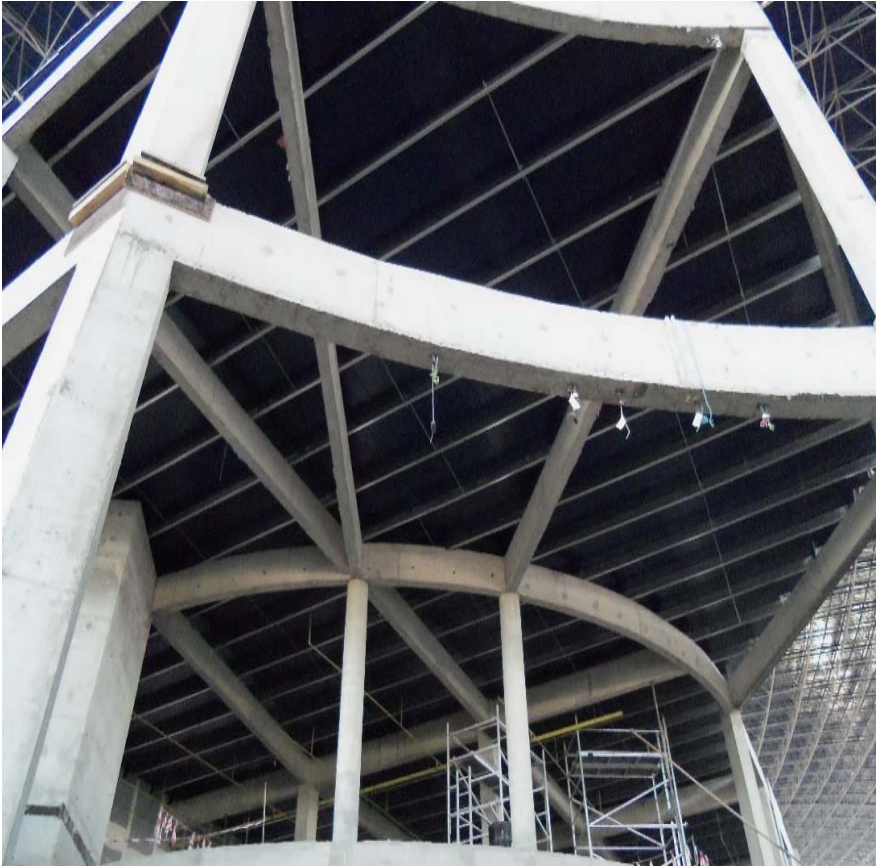
ROOF PURLINS & CLEATS



CLEAT & PURLIN WORKS

ACTIVITY

SANDWICH PANEL



ACTIVITY



Diplomat Group Of Companies
ISO Certified (ISO 9001:2008)



“Quality Policy”

Our Quality Policy is;

- Committed to deliver products and services to customer, by fulfilling the established requirements.
- Ensure on time delivery of products and services.
- Achieve customer satisfaction.
- Committed to improve the effectiveness of the quality management system.