

Brand Identity Document

Sayali

Indigo and Charcoal

By Shagun Agarwal

Brand Personality

Minimal

Mystical

Modern

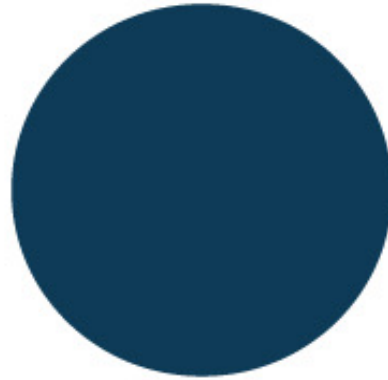
Feminine

Fluid

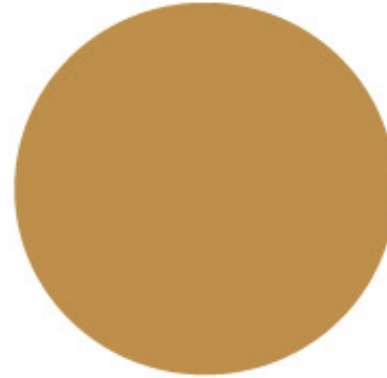


Colour Palette

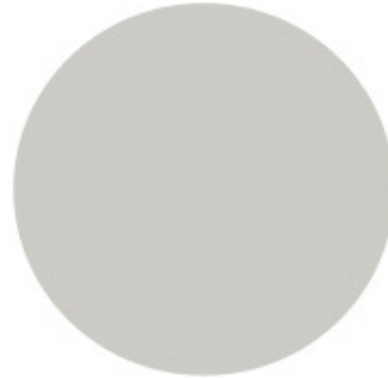
PRIMARY COLOUR 1
(To be used most often)
Indigo
Hex (#0E3B57)
rgb (14, 59, 87)



SECONDARY COLOUR 1
Gold
Hex (#BD8F4B)
rgb (189, 143, 75)



PRIMARY COLOUR 2
Mystical Grey
Hex (#CCCBC5)
rgb (204, 203, 197)



BASE COLOUR
Dusty Peach
Hex (#EAE6E3)
rgb (234, 230, 227)



Logo



The logo is Hand-drawn.

The wordmark is written using lowercase font "Motherva".

The font has been slightly modified and used underneath the logo

with a "0.5" stroke outline.

Adequate space to be left between the logo and the wordmark,

and the wordmark and the dot underneath.

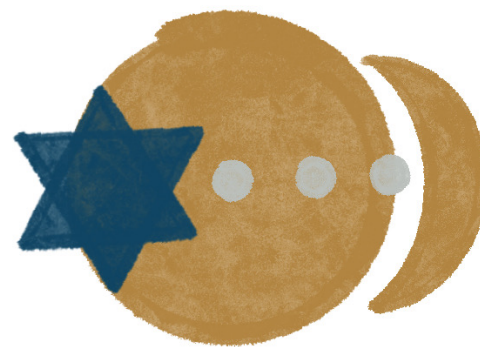
Colour Variations of Logo



sayali



To be used for Sayali Goyal



sayali



To be used for
Indigo and Charcoal Space

Wordmark

sayali
•

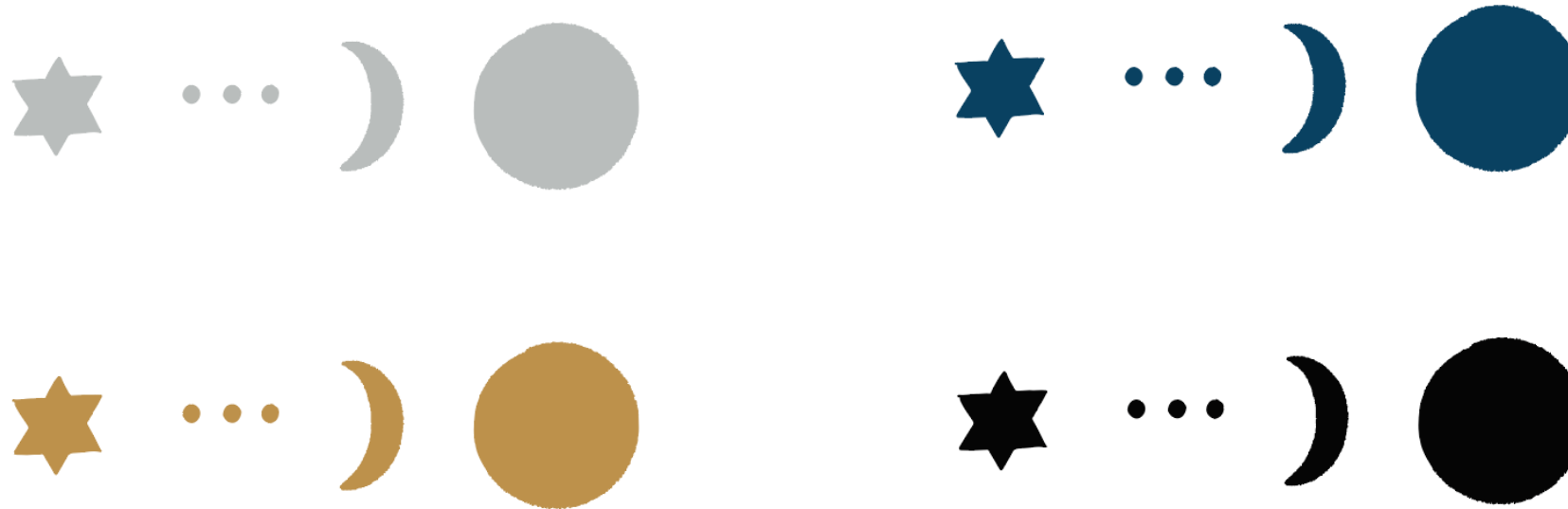
sayali
•

Font used is "Motherva",
with a few changes in the curves
to prevent copyright issues.

The wordmark's composition
is complete with a circle
underneath the word "sayali"

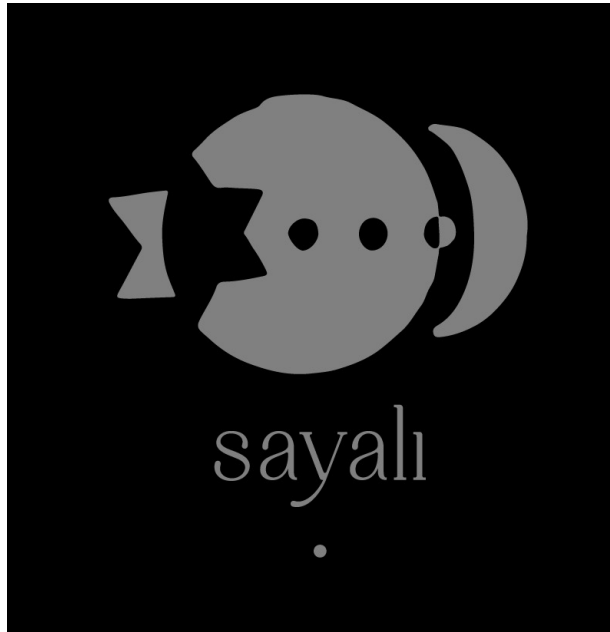


Individual Elements of Logo



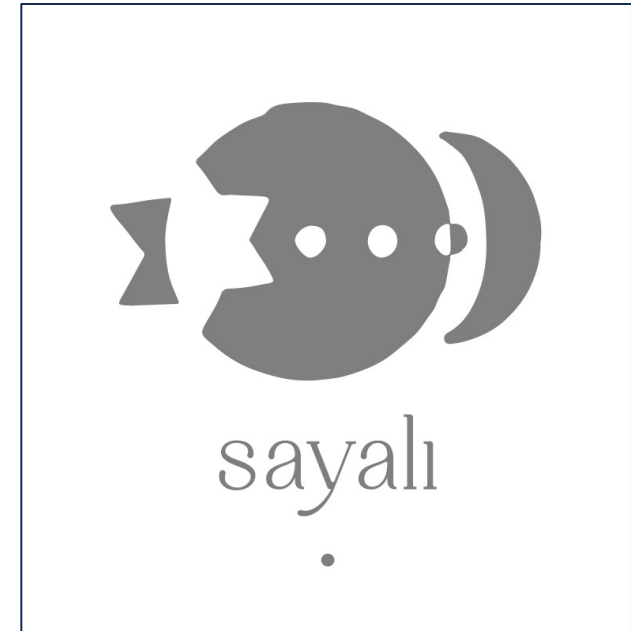
These elements of the logo can be used as bullet points,
as numbering or on individual pages of a brochure / invites.

Watermark Guidelines



At 50% opacity of the
colour white (#FFFFFF)

Symbol to be used as
watermark on
photographs
and pictures of
paintings in two ways



At 50% opacity of the
colour black (#000000)



Watermark Guidelines

Website Landing Page



Alternate Website Landing Page





HOME PRODUCT STORE ABOUT US



Lorem ipsum dolor sit amet, consectetur adipiscing elit, sed diam nonummy nibh euismod tincidunt ut laoreet dolore magna aliquam erat volutpat. Ut wisi enim ad minim veniam, quis nostrud exercitation ullamcorper suscipit lobortis nisl ut aliquip ex ea commodo consequat. Duis autem vel eum iriure dolor in hendrerit in vulputate velit esse molestie consequat, vel illum dolore eu feugiat nulla facilisis at vero eros et accumsan et iusto odio dignissim qui blandit praesent luptatum zzril delenit augue duis dolore te feugait nulla facilisi.

Secondary Font is “PP Hatton” as it has a modern, minimal and mystical element, along with an Arabic dot instead of a simple dot.

Visiting Card

Background of card will be Dusty Peach,
as the base colour.

Elements of the logo will be incorporated
onto the back of the card.





Metal Signage in Exhibition Space