

WINTER SPITI EXPEDITION 2021-22



WHY VISIT SPITI VALLEY IN WINTERS ?

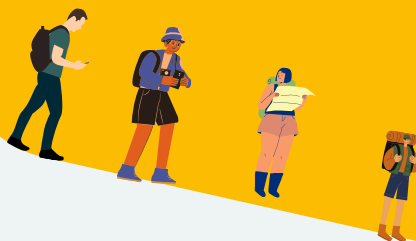


- The common myth is that Spiti valley is inaccessible in the winters. It is not so; some parts may be out of bounds but the road from Shimla to Kaza is open throughout the year. Nowadays a lot of people are travelling to Spiti Valley in winters.

REASONS TO VISIT SPITI IN WINTERS:-

- THE SNOW PARADISE
- LESSER NO. OF TRAVELLERS
- EXPERIENCE LOCAL LIFE
- UNEXPLORED ROADS
- FROZEN SPITI RIVER AND WATERFALLS.





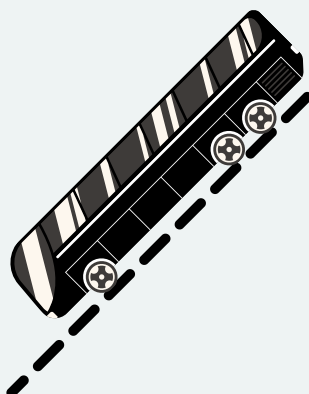
DAY BY DAY PLAN



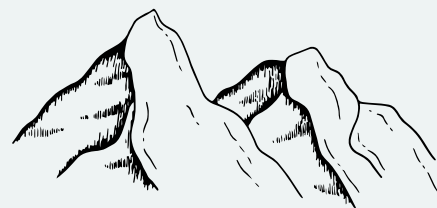
DELHI - SHIMLA

**DAY
0**

- Get ready to be departed from Delhi at around 10:00 pm.
- Reach Shimla next morning by an overnight in Volvo.



**DAY
1**



SHIMLA -CHITKUL/SANGLA

(SHIMLA - NARKANDA - KARCHAM DAM - CHITKUL)

- The Spiti Expedition quest starts from here.
- Have breakfast, freshen up and drive through Kufri, with Narkanda on the way to Sangla valley.
- We will be reaching Chitkul by evening
- Gossip Time with fellow travel Buddies.
- After dinner, go for a good night's sleep.



/TheTravellersShed



@TheTravellersShed



Sahil: 9910075134

Arun: 8860866007



DAY 2

CHITKUL - NAKO (CHITKUL - SANGLA - NAKO)

- After breakfast, spend some time at leisure and check out.
- Chitkul is the last Indian village towards China border. Explore the best of it.
- Next, you will be departing for Nako.
- Passing by Frozen Spiti River, enjoy 360-degree view of the mesmerizing mountains. Reach Nako, by evening, check-in to your homestay and have local Spiti cuisine.



DAY 3

NAKO-KAZA

(NAKO-TABO - DHANKAR - PIN VALLEY - KAZA)

- After having breakfast spend some peaceful time at the beautiful Tabo Monastery and know different stories by the Monks.
- Time to head toward the beautiful administrative town of Spiti Valley, Kaza.
- Explore the oldest monastery of the valley in Dhankar.
- During this excursion, you will be confronted to Pin Valley, a house to wonderful verdure of the high Himalayas.
- Enter the exquisite town and stay @thehomestay in kaza.



/TheTravellersShed



@TheTravellersShed



Sahil: 9910075134

Arun: 8860866007



DAY 4



DAY 5

KAZA

**(HIKKIM - KOMIC -
LANGZA)**

- Divine Spiti Valley sightseeing awaits you after having breakfast.
- At 4,400m above sea level in, the Hikkim post office is a vital connection to the outside world.
- Send postcards to friends and family.
- Visit Komic Gompa at the World's Highest motorable village and have a delicious lunch.
- Langza is a high- altitude village known for ancient marine fossils.
- Collect some fossils to take memories of nature home.

KAZA

**(KEY MONASTERY
-KIBBER - CHICHAM)**

- Visit the spectacular Tibetan Buddhist Key Monastery located on a picturesque hilltop at an altitude of 4,166 meters above the sea level.
- Kibber, a town that is an extremely continuous objective for snow panthers to visit. As well as witness a great deal assortment of Himalayan Ibex, Red Fox and so forth.
- Chicham Bridge is the highest bridge in Asia and allows you to have panoramic views.



/TheTravellersShed



@TheTravellersShed



Sahil: 9910075134

Arun: 8860866007

KAZA-KALPA

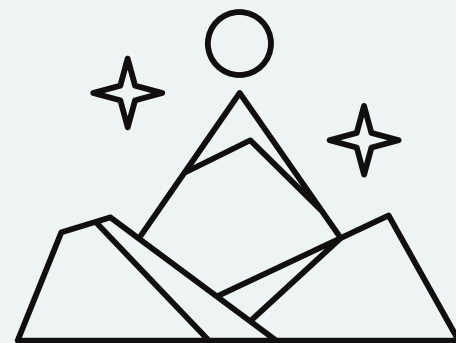
**DAY
6**

(KAZA-GIU MUMMY-NAKO-KALPA)

- After breakfast, start the return journey.
- Pay a visit to over 500- years- old Tibetan mummy in Giu village.
- Sightseeing at the frozen Nako River and lunch at Nako top.
- Reach Kalpa by late- evening, go through some last valuable time with your new travel amigos.



**DAY
7**



KALPA- SHIMLA-DELHI

- Wake up to the Kinner Kailash view.
- visit the popular Suicide point and start your excursion back to Shimla.
- Reach Shimla by evening.
- Depart for Delhi.



**NEW
DELHI**



DAY 8

* Arrive in Delhi in the morning of day 9.

The Spiti Valley winter tour package ends with a lot of memories.



/TheTravellersShed

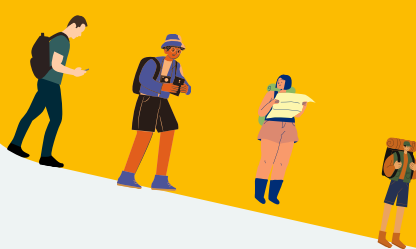


@TheTravellersShed



Sahil: 9910075134

Arun: 8860866007



STAY |

Accommodation for 6 nights – 1 Night at Chitkul, 1 Night at Nako, 3 Nights in Kaza, 1 Night at Kalpa

MEALS |

- Breakfast and Dinner from the first stay.
- No lunch is included.

OTHER INCLUSIONS |

- All inner line permits for the trip.
- Driver Night Charges, Toll Tax, Parking Charges, etc.
- Team Captain throughout the trip.
- An Oxygen Cylinder 24X7 in the car in case of emergency
- GST is included on the tour cost.

TRANSPORT |

- Volvo transfer from Delhi to Shimla & back from Shimla to Delhi
- Entire sightseeing by tempo traveller/Innova.



/TheTravellersShed



@TheTravellersShed



Sahil: 9910075134

Arun: 8860866007

EXCLUSIONS



- The package doesn't include the cost of any form of insurance, rescue, evacuation, hospitalization and entry tickets.
- Other expenses such as drinks and tips are not included.
- Any additional expenses such as of personal nature.
- Additional accommodation/food costs incurred due to any delay travel.
- Any lunch and other meals not mentioned in Package Inclusions.
- Any Airfare / Rail fare other than what is mentioned in "Inclusions" or any type of transportation.
- Parking and monument entry fees during sightseeing.
- Additional Costs due to Flight Cancellations, Landslides, Roadblocks, and other natural calamities.
- Any other services not specified above in inclusions.



/TheTravellersShed



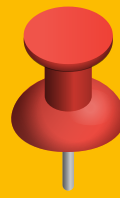
@TheTravellersShed



Sahil: 9910075134

Arun: 8860866007

NOTE!!



- All hotels and guest houses will be shut at that time and you will only get homestays which have dry and eco-friendly squatting toilets as sometimes wet toilets are not available due to water lines freezing.
- Because of the water lines freezing, the local needs to carry the water all the way in the freezing cold from a nearby water source and hence having bath while you are in spiti will not be possible.
- In peak winters i.e. january and early february all the places might not be open due to adverse weather conditions. We will keep you updated of the same in case any last minute changes need to be made to your plan.
- We expect you to be understanding and be flexible with the changes made at the time of the situation prevailing due to bad weather for your safety and well being.



/TheTravellersShed



@TheTravellersShed

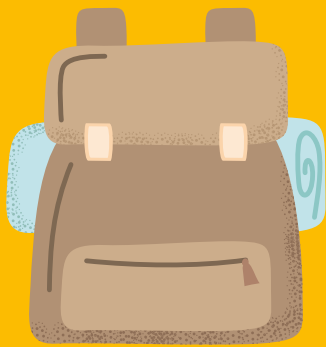


Sahil: 9910075134

Arun: 8860866007



ESSENTIALS TO CARRY



BAGPACK



ID-PROOF



FACE MASK



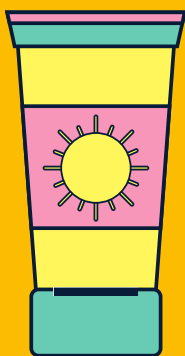
HAND SANITISER



CASH



TREKKING SHOES



SUNSCREEN



RAINCOAT



UMBRELLA



/TheTravellersShed



@TheTravellersShed



Sahil: 9910075134

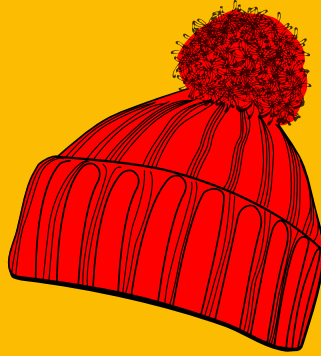
Arun: 8860866007



ESSENTIALS TO CARRY



SOCKS



WOOLEN CAP



SUNGLASSES



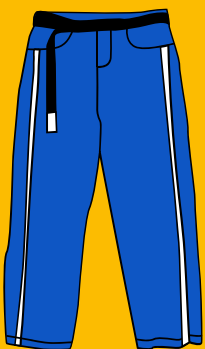
WOOLEN GLOVES



MUFFLER



BASIC MEDICINES



TRACKPANTS



PORTABLE CHARGER



A LOT OF SPIRIT



/TheTravellersShed



@TheTravellersShed



Sahil: 9910075134

Arun: 8860866007

CURIOUS TO KNOW OUR **ADVENTUROUS JOURNEY?**



Today we are going to share a story of two dreamers who accidentally came together and created a bond of Friendship which lead to a beautiful thing we call **#TheTravellersShed**. A shared passion for Bikes and treks set **@ArunShokeen** and **@SahilWason** on an unconventional road to Spiti valley. When two like-minded people meet Magic Happens, the same kind of magic happened with us and we landed in Kaza. We found our home and decided to make it our Shed.

Now after 5 years of running this place and Spiti valley group trips with our blood and sweat, we have achieved a name and a place in between Spiti Lovers. But all this wouldn't have happened without your Love and support. So, we Thank you all for standing with us and also request you to keep showering this love.

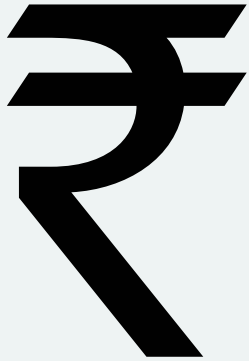


RECENT GROUP TRIPS TO SPITI VALLEY





PACKAGE COST



**Triple sharing - INR 17,500/-
per person**

**Double Sharing - INR 18,999/-
per person**

PAYMENT POLICY



- **The booking sum is Rs. 5000 per seat.**
- **Seats are booked on a first-come-first-served basis.**
- **The rest of the sum is to be paid 3 days prior
the trip. (Through Bank Transfer)**
- **Alternatively, you can pay the equilibrium on the
day of departure after meeting us. (In Cash)**

Non-Refundable



/TheTravellersShed



@TheTravellersShed



Sahil: 9910075134

Arun: 8860866007



WINTER SPITI

DM OR CALL US TO BOOK YOUR SLOTS.



/TheTravellersShed



@TheTravellersShed



Sahil: 9910075134

Arun: 8860866007