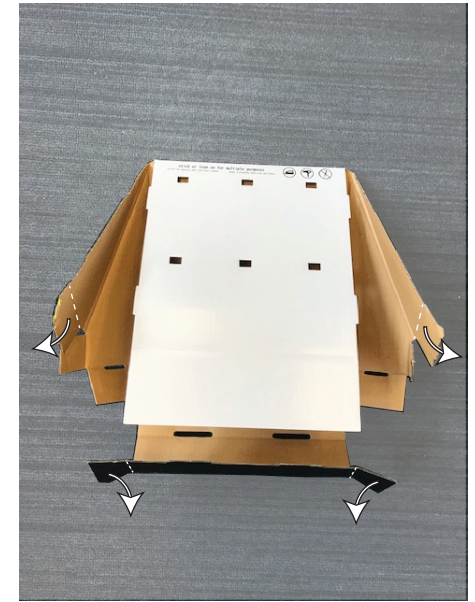
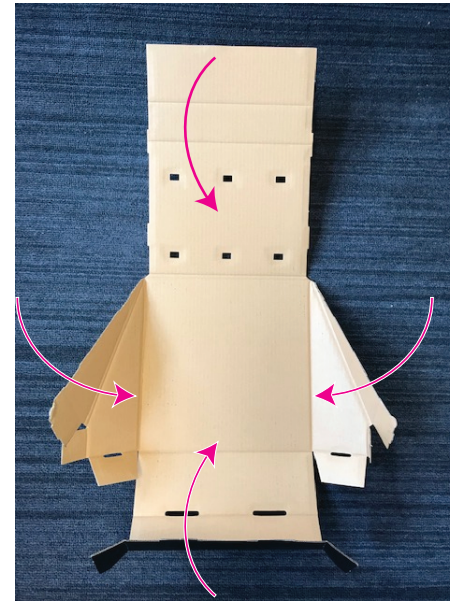
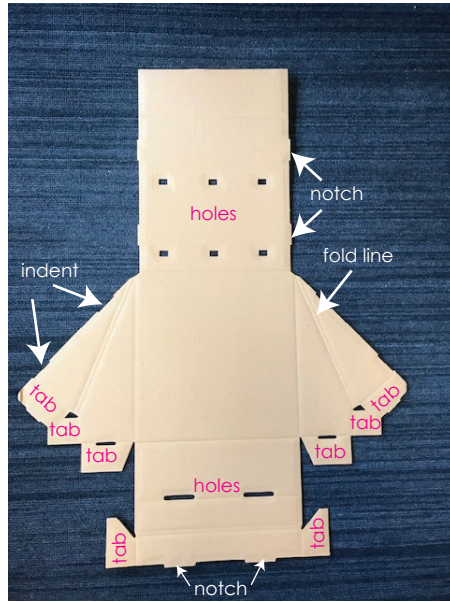
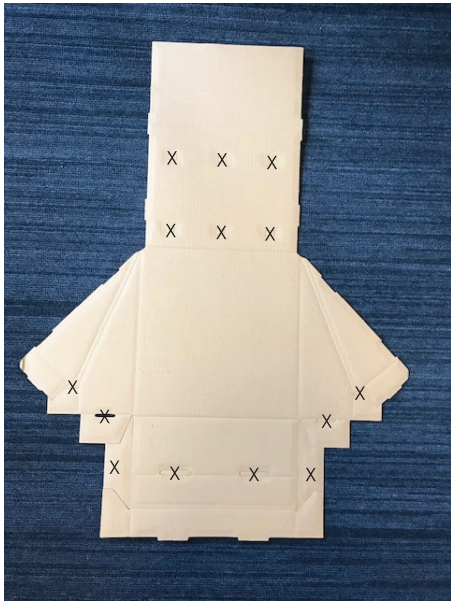


AD FAB CDU Assembly Instructions



1. Remove and discard all unnecessary pieces marked with an "X"
Take note of score lines, tabs, notches and notch holes, indents.

2. Prep ALL scored lines
by folding pieces inwards
(marked arrows).

3. Prep these scored lines ONLY - outward
(marked arrows).



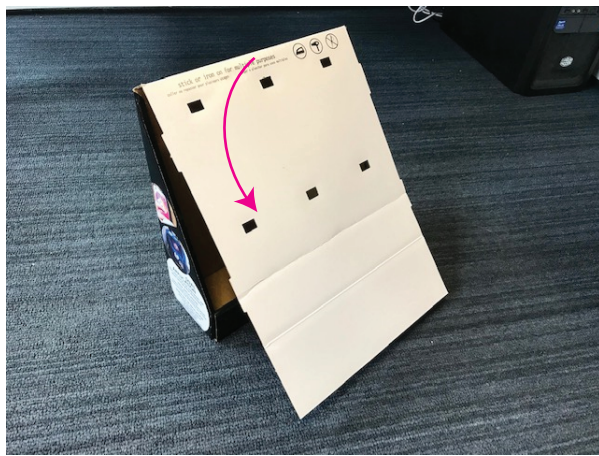
4. Start at the bottom and fold inward,
while inserting the tabs into the sides.
The two black tabs that were
folded outward (step 3) stay parallel to
the side walls of the CDU.

5. Secure all tabs by pressing the
notches into the bottom holes.

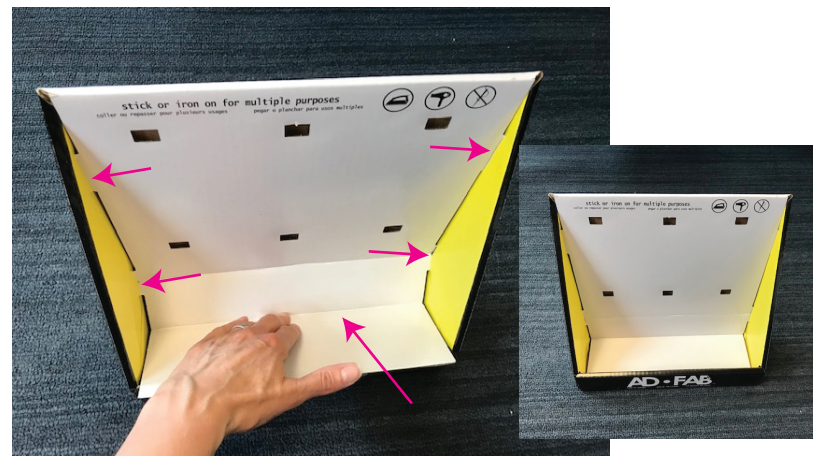
6. Use your thumbs to press
the sides inward.



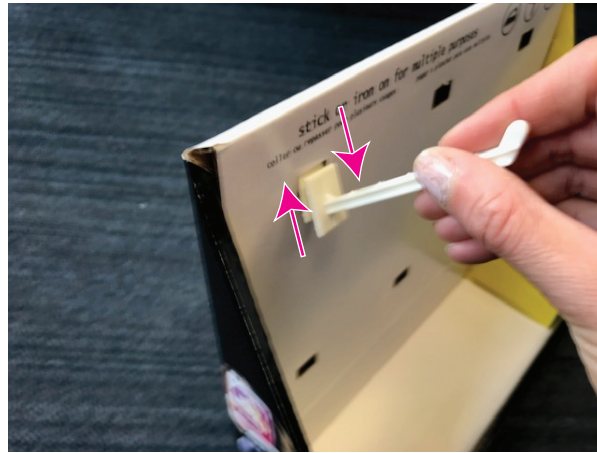
7. Secure the sides by pressing notches into the bottom holes.



8. Fold white background down and press along the fold lines to lower in the white base. Secure the background by pressing notches into the indents.



9. Push hook up into the hole, then press down to secure.



Check out the video at
www.ad-fab.com



10. Repeat step 9 for the remaining hooks.