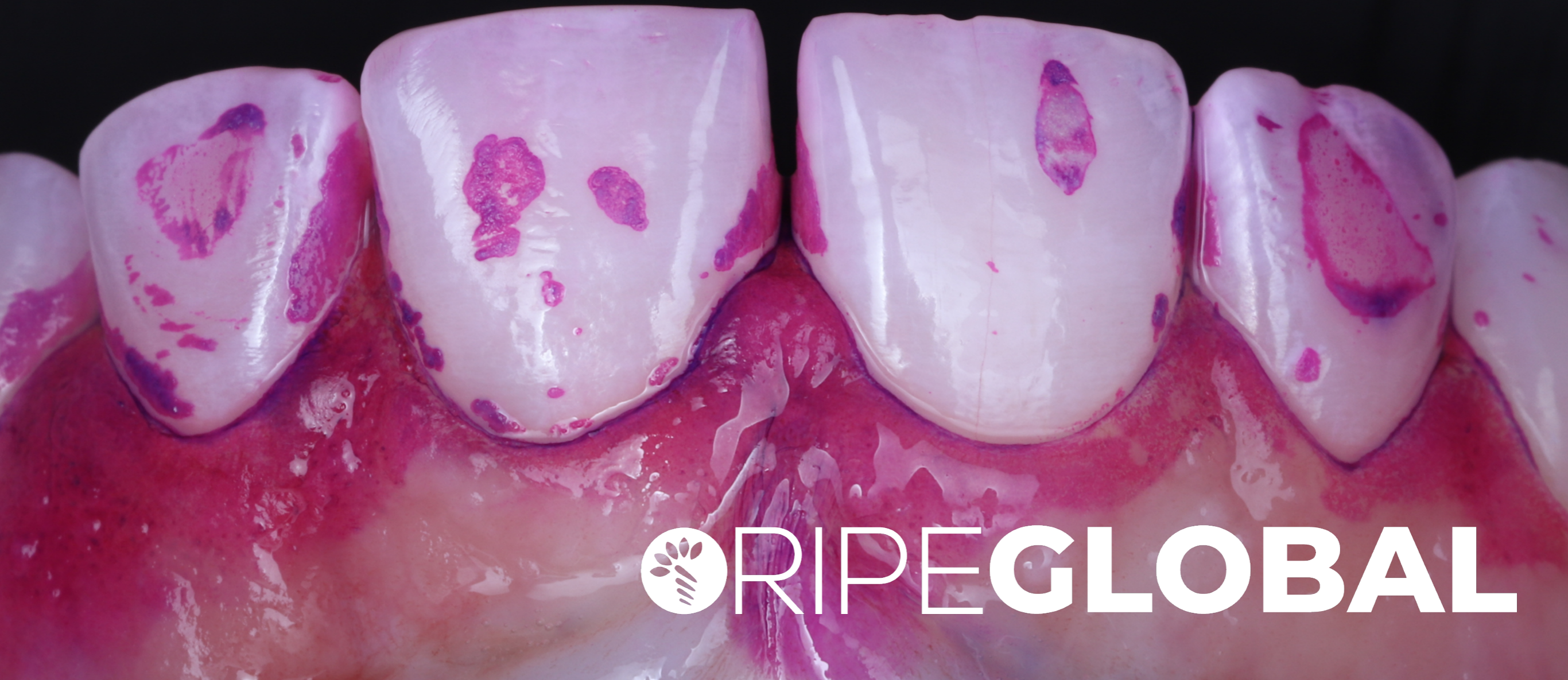


Armamentarium Checklist for Direct Restorations

Dr Alice Whang, RipeGlobal



 **RIPEGLOBAL**

Posterior

Dentist's Tray	
Operative kit (mirror, tweezers, sickle probe, periodontal probe, flat plastic, ball burnisher, sickle scaler)	
Handpieces and air abrasion	
Bur stand	
Gauze and cotton rolls	
Floss	
On Standby	
Scalpel handle and #12 blade	
Coltene Wedget	
Retraction cord	
Ultradent Viscostat clear	
Wedges - different sizes	
Matrix- different sizes	
Extra soflex discs	
Tofflemire band and retainer	
Curved artery forceps	
Tints- B2, Ochre, White, Blue, Yellow	

Dental Assistant's Bench	
Patient's file and radiographs open	
Camera and mirrors	
Topical and local anaesthetic	
Rubber dam, apply a thin layer of glycerin around the holes	
Rubber dam frame	
Rubber dam forceps	
Relevant rubber dam clamp	
Sharp scissors	
Bite block	
Plaque disclosing gel	
Etch	
Clearfil SE bond	
Microbrushes x4	
PTFE strips	
Flowable composite	
Composite (check shade)	
Glycerin gel	
Curing light	
Matrix system	
Wedge	
Soflex disc	
Articulating paper	
Tweezers	

Anterior

Dentist's Tray		Dental Assistant's Bench	
Operative kit (mirror, tweezers, sickle probe, periodontal probe, flat plastic, ball burnisher, sickle scaler)		Patient's file and radiographs open	
Handpieces and air abrasion		Camera and mirrors	
Bur stand		Shade guide	
Gauze and cotton rolls		Black contractor	
Floss		Topical and local anaesthetic	
		Rubber dam, apply a thin layer of glycerin around the holes	
		Rubber dam frame	
		Rubber dam forceps	
		Relevant rubber dam clamp	
		Sharp scissors	
		Bite block	
		Plaque disclosing gel	
		Etch	
		Bond	
		Microbrushes x4	
		Flowable composite	
		Composite (check shade)	
		Glycerin gel	
		Curing light	
		Clear matrix	
		Wedge	
		Soflex disc	
		Articulating paper	
		Tweezers	
		Sharp graphite pencil	