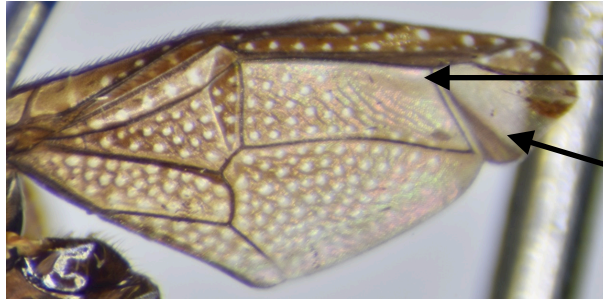


Key to Afrotropical *Lulodes* Enderlein, 1924 (Diptera, Platystomatidae)

- 1. Frons dull and transversely wrinkled; notum with irregular yellow pruinose fascia and spots; numerous small bullate hyaline spots on wing membrane more-or-less consistent in size, absent in cell m_1 and anterior-distal apex of dm
*L. asteropterus* (Frey, 1932)
 Nigeria



- Frons smooth and weakly shining; notum shining black, lacking pruinosity; wing membrane black basally, apicad of which it is with scattered with unlinked bullate hyaline spots (except along posterior wing margin), additionally forming a pattern of larger nearly linked hyaline spots apically beyond an arc from apex of R_1 across crossvein $dm-m$ *L. seriatopunctatus* Enderlein, 1924
 Togo; E. Africa, Ghana, Zaire basin

