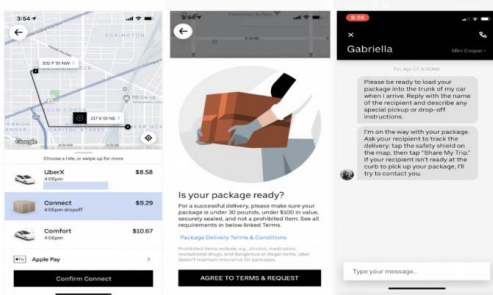


What Does a Delivery Request from Uber Look Like? Uber Connect

As mentioned above, in April 2020, Uber rolled out Uber Connect. According to Uber: Uber Connect is an option that allows you [a passenger] to request a driver to help you transport your package(s) to the person waiting at the designated dropoff location. Here's an example of what Uber Connect looks like from the passenger's side:



Basically, with Uber Connect, you are a courier for people who don't want to use the regular Post Office.

Can Uber charge more than the estimate?

With the upfront rates, Uber seemingly assures riders that the prices displayed at the beginning of the journey are exactly what they will pay at the end of it.

However, this is not always the case.

When the journey changes unexpectedly, Uber might charge the rider more than the estimated upfront price.

For example, if the journey takes longer than expected due to a roadblock or if the rider suddenly changes the drop-off point, Uber will be forced to adjust their prices according to the given situation.

Need a ride call, Uber transportation is cheaper than cab fares, as there are less expenses in operation, most trips are less than ten dollars \$10. In town Long distance also available...

Contact Us

Phone: 989 464 3074
Email: michiganshadow@gmail.com
Web: michiganshadow.org



UBER CONNECT PACKAGE DELIVERY

Michigan Shadow

2022-2023

Transportation & Recovery



WHAT IS UBER CONNECT

Uber Connect is a service level on the Uber app that allows drivers to deliver packages to their customers.

It's similar to Uber Eats, but with Uber Connect, drivers pick up and drop off packages instead of food.

With this shipping option, you don't need to worry about paying for postage, printing shipping labels, driving to the post office, or waiting a few days to get packages where they need to go.

You don't need to worry as much about package dimensions and weight.

All you do is pick things up, open the Uber app, select Uber Connect, and wait for your driver to arrive.

How Much Does Uber Connect Cost?

Uber Connect is priced similar to the cost of an Uber ride.

This includes fees such as a base fare, minimum fare, and more.

You'll pay this minimum amount regardless of the trip's distance and time factors.

If an Uber driver must wait longer than two minutes at the pickup location, then Uber adds \$0.35 per minute to the trip's time calculation.

The app reveals the estimated price of your trip before you accept it.

Here is an example breakdown of Uber Connects fare prices.

Let us assume we are in the Old Town Animal Care Centre in Chicago, and we want to go to the Veterinary Emergency Group using UberX.

Here is the sample fare for the journey:

Seat Capacity	4
Base Fare	\$1.87
Booking Fee	\$1.85
Per-Minute	\$0.30
Per mile	\$0.85
Cancellation Fee	\$5.25
Minimum fare	\$4.98
Average fare	\$9.29

How is an Uber base fare calculated?

According to an answer on Quora, "Uber fares are primarily calculated based on distance and duration. There is a 'Base Fare' that is charged for every ride (essentially a fee to jump in the car)."

The Base Fare and the variable portion based on distance and duration both vary from city to city.

You will need to check your city at Uber's City Listings.

Installing App will give pricing for local area, gives added accountability to deliveries of good, Items are not insured at time of delivery through insurance companies. Seeking insurance possibilities at this time and will seek to ensure that items are treated like wise with or without insurance till that time of insured.

How to Deliver a Package Using

Uber Connect

Agreeing to take on an Uber Connect trip is similar to accepting any other Uber driving opportunity.

Here are the steps.

1. Accept the trip inside the Uber app.
2. Drive to the pickup location.
3. The customer sending the package will meet you at the door and hand you the package.
4. Drive to the dropoff location.
5. Deliver the package to the recipient.

You'll see the following information as you deliver the package.

- Recipient's name • Drop off address
- Options for sending messages inside the app or by calling them

Uber asks drivers to contact the sender if the recipient isn't at the dropoff location.

Wait five minutes before telling the sender that you can't find the recipient.

Go to the delivery details in the Uber app and click on the three dots to contact the sender.

You can message or call them.

The sender or recipient can choose two options if you're having difficulty delivering the package.

First, they can ask you to leave the package at the recipient's door.

However, they must do so in writing within the app.

Make sure they do it because this protects you if they can't find the package later.

Second, they can tell you to drive the package back to the sender's location.

If this happens, Uber will pay you for the return trip.

If you can't get a hold of the sender or recipient after waiting for more than five minutes, Uber asks you to contact Uber Support for help.