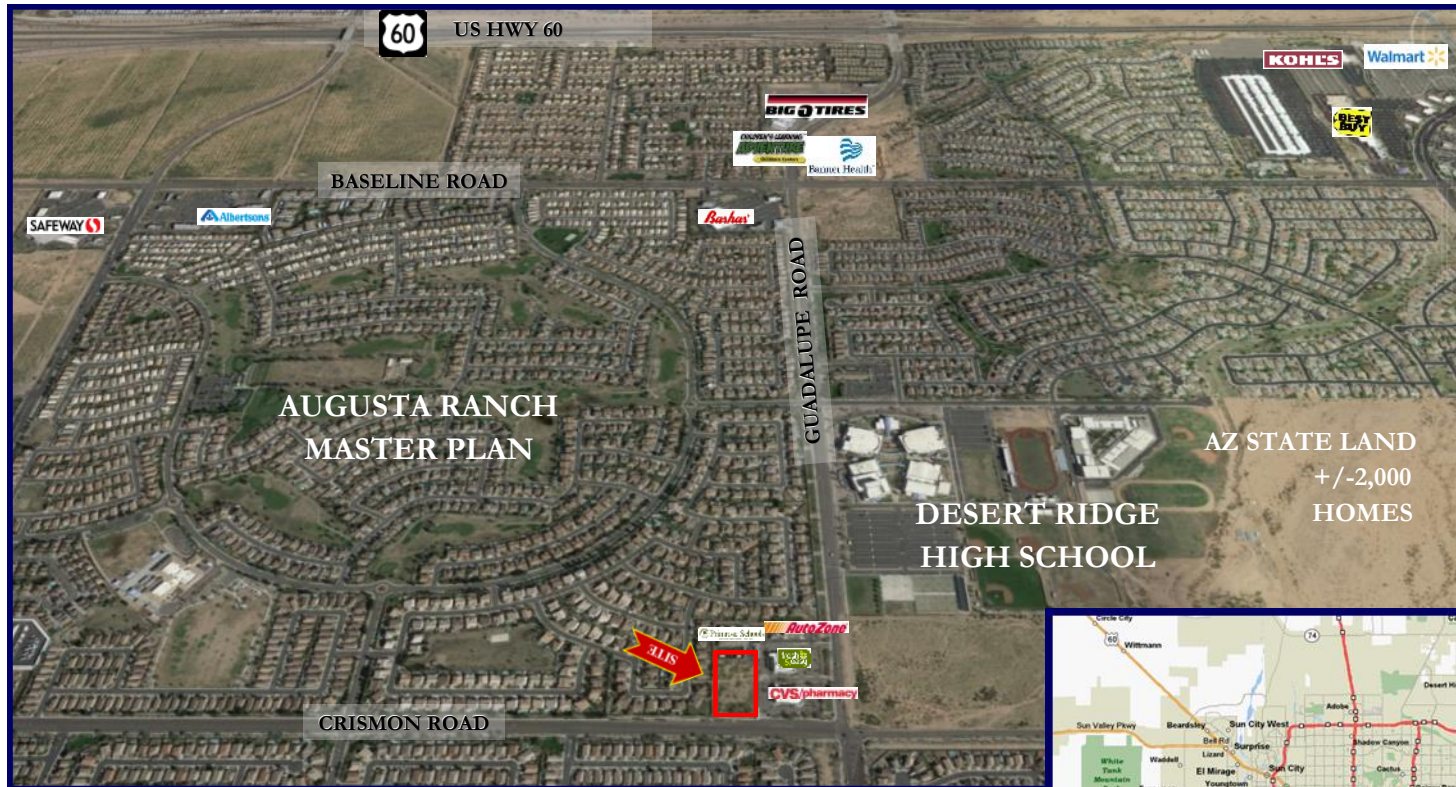
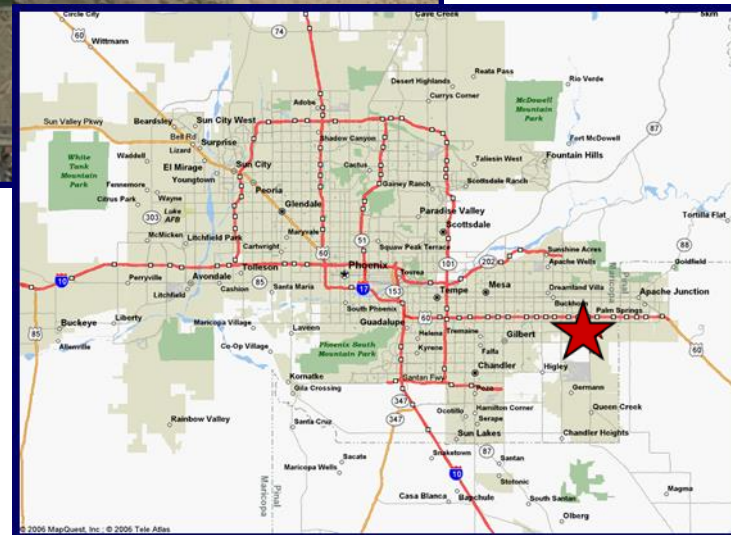


AUGUSTA MARKETPLACE

NWC of Guadalupe & Crismon Roads
Mesa, AZ



- ◆ APPROXIMATELY 2.3 ACRES AVAILABLE
- ◆ ZONED C-2, CITY OF MESA
- ◆ PART OF AUGUSTA RANCH MASTER-PLAN COMMUNITY
- ◆ ADJACENT TO DESERT RIDGE HIGH SCHOOL
- ◆ FUTURE GROWTH / POPULATION FORTHCOMING
- ◆ AVAILABLE FOR GROUND LEASE, BUILD-TO-SUIT, OR SALE



FOR ADDITIONAL INFORMATION CONTACT:

JOHN J. BADURA

602-616-6583

JOHN@NOBLEWESTGROUP.COM

WWW.NOBLEWESTCOMMERCIAL.COM

NOBLEWEST PROPERTIES LLC

8149 EAST EVANS ROAD, SUITE C-04

SCOTTSDALE, AZ 85260

AUGUSTA MARKETPLACE

NWC of Guadalupe & Crismon Roads

Mesa, AZ



FOR ADDITIONAL INFORMATION CONTACT:

JOHN J. BADURA

602-616-6583

JOHN@NOBLEWESTGROUP.COM

WWW.NOBLEWESTCOMMERCIAL.COM

NOBLEWEST PROPERTIES LLC

8149 EAST EVANS ROAD, SUITE C-04

SCOTTSDALE, AZ 85260

AUGUSTA MARKETPLACE

NWC of Guadalupe & Crismon Roads

Mesa, AZ

